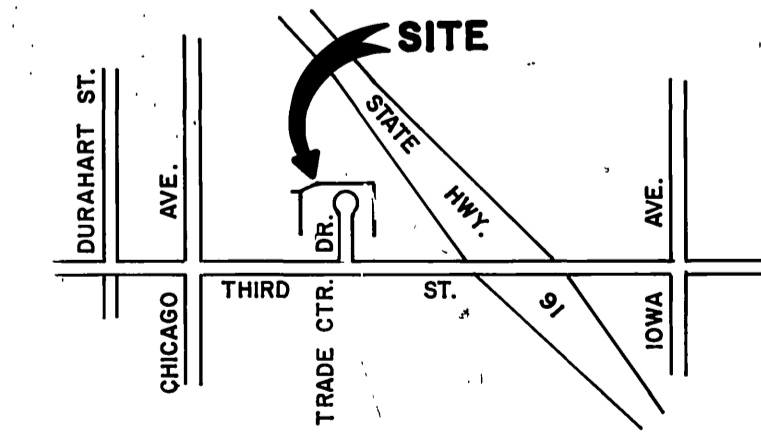


GENERAL NOTES

1. IT SHALL BE THE RESPONSIBILITY OF THE CONTRACTOR TO CLEAR THE RIGHT OF WAY IN ACCORDANCE WITH THE PROVISIONS OF LAW AS IT AFFECTS EACH UTILITY INCLUDING IRRIGATION LINES AND APPURTENANCES AND AT NO COST TO THE CITY.
2. CONSTRUCTION SHALL BE IN ACCORDANCE WITH THE CITY OF RIVERSIDE, DEPARTMENT OF PUBLIC WORKS, STANDARD DRAWINGS, AND THE STANDARD SPECIFICATIONS FOR PUBLIC WORKS CONSTRUCTION, 1979 EDITION.
3. THE PRIVATE ENGINEER SIGNING THESE PLANS IS RESPONSIBLE FOR THE ACCURACY AND ACCEPTABILITY OF THE WORK HEREON. IN THE EVENT OF DISCREPANCIES ARISING DURING CONSTRUCTION THE PRIVATE ENGINEER SHALL BE RESPONSIBLE FOR DETERMINING AN ACCEPTABLE SOLUTION AND REVISING THE PLANS FOR APPROVAL BY THE CITY.
4. LOCATION OF LATERALS TO BE DETERMINED IN THE FIELD AT THE DIRECTION OF THE OWNER. AVOID CONFLICT WITH PROPOSED AND/OR EXISTING FACILITIES.
5. CONTRACTOR IS TO VERIFY EXISTING SEWER ELEVATION PRIOR TO CONSTRUCTION.
6. THE SEWER CONTRACTOR SHALL ADJUST MANHOLES TO FINAL GRADE AFTER PAVING IS COMPLETED.
7. A PLUG SHALL BE INSTALLED AND WILL REMAIN IN PLACE WHERE THE NEW SEWER CONNECTS WITH THE EXISTING SEWER UNTIL THE NEW SEWER IS ACCEPTED BY THE CITY.

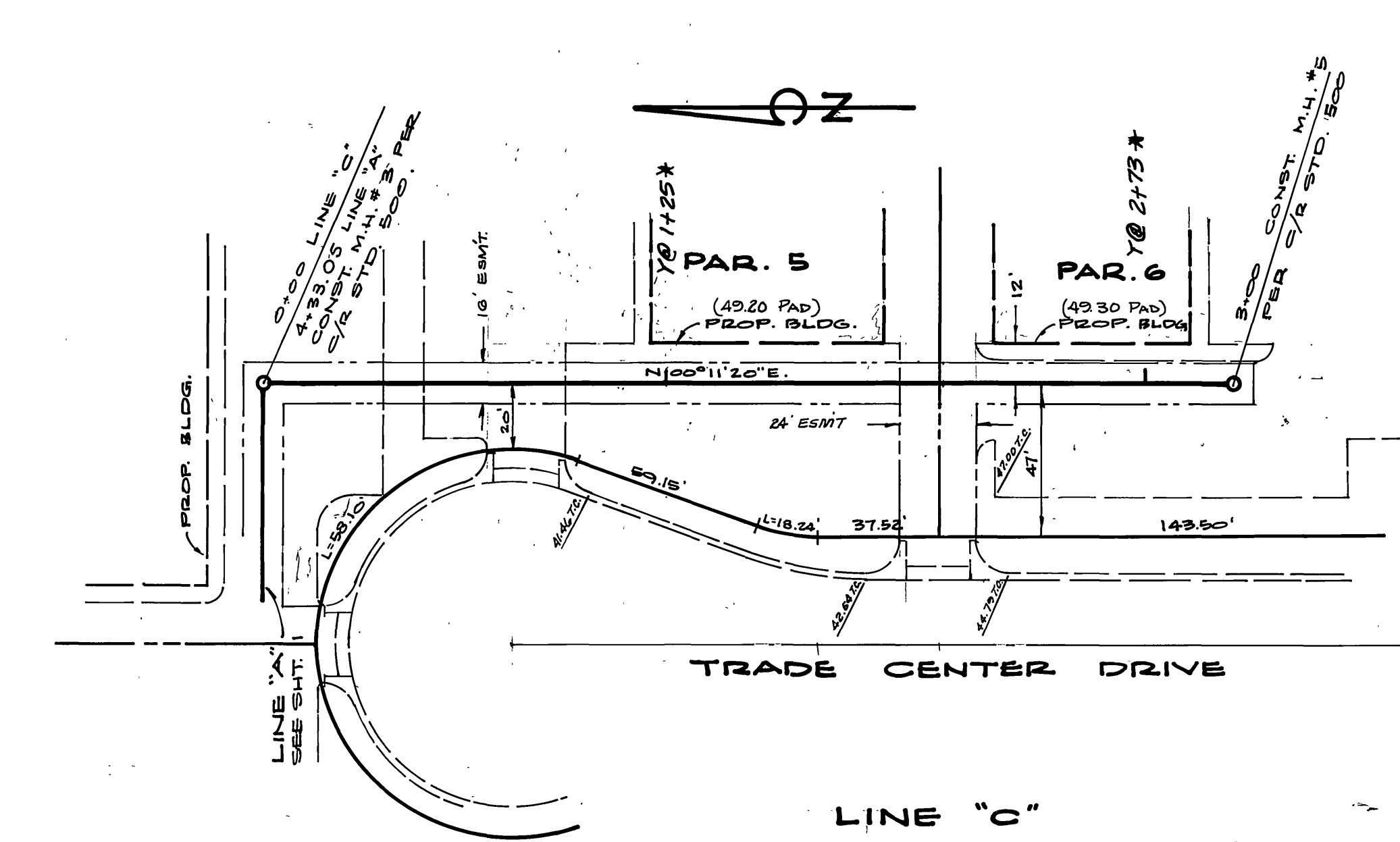
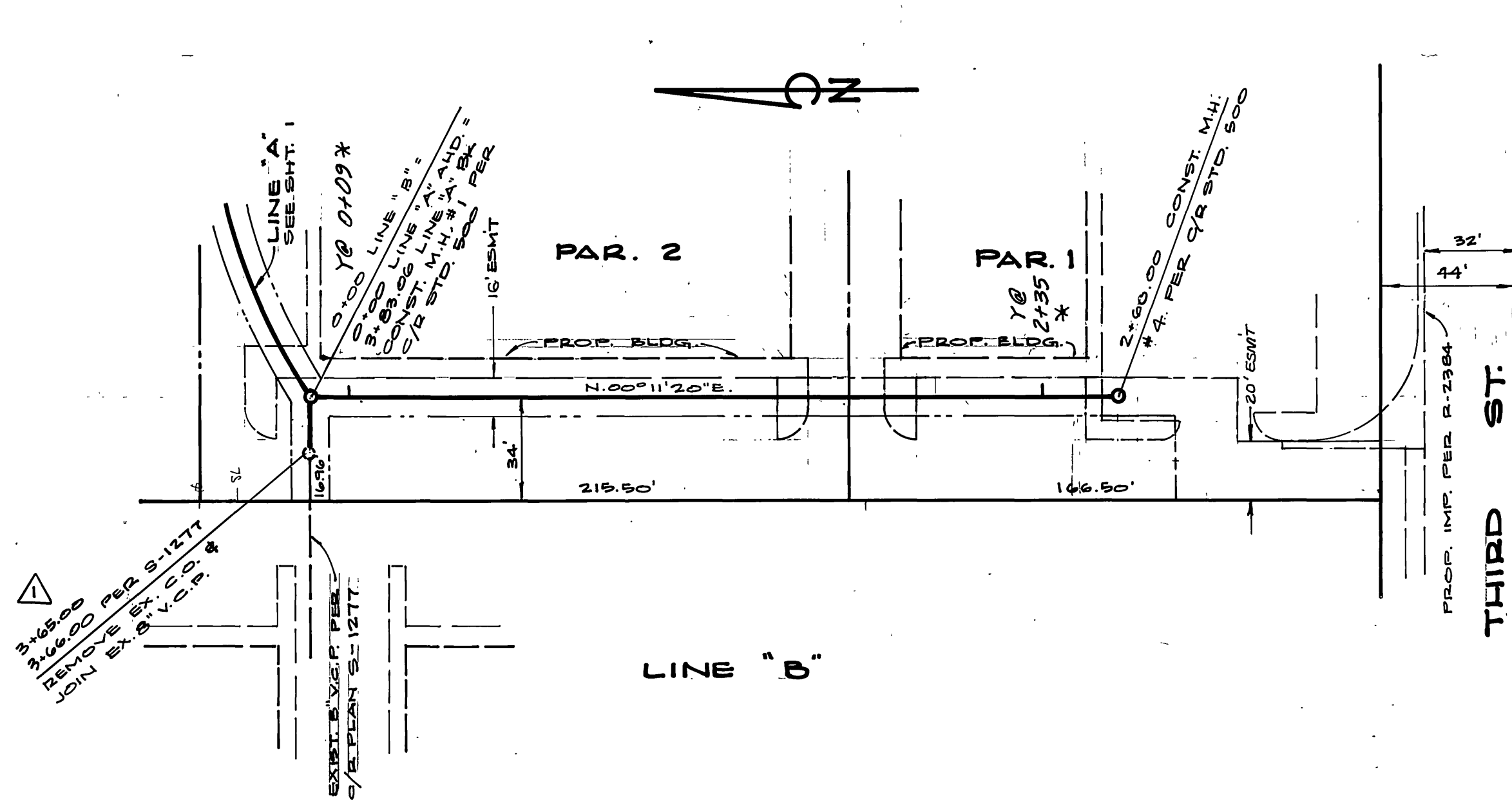
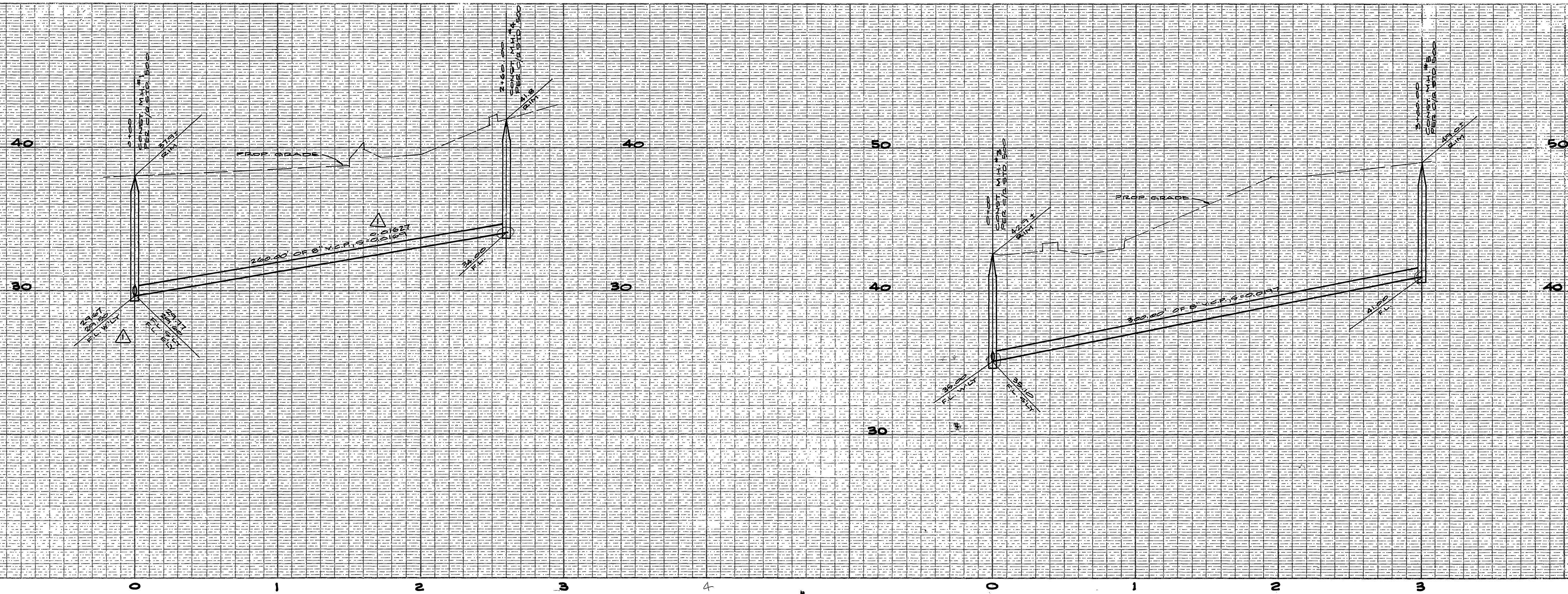


BENCH MARK

FD. BRASS DISK STAMPED (ITA) CAPPED AT THE INTERSECTION OF E. OF THIRD ST. AND E. OF CHICAGO AVE., C.R.F. B. 717/68 ELEV. = 941.005

ALBERT A. WEBB ASSOCIATES CIVIL ENGINEERS RIVERSIDE, CALIFORNIA APPROVED BY <i>Robert N. Wall</i> DATE 7/14/81 R.E. No. 1876 W.D. 77-205 FOR INCO CO. F.B.		CITY OF RIVERSIDE, CALIFORNIA PUBLIC WORKS DEPARTMENT APPROVED BY <i>Robert N. Wall</i> DATE 7/14/81 PRINCIPAL ENGINEER PARK DEPARTMENT TRAFFIC DIVISION CHIEF PUB. WKS. ENGR. <i>W.D.</i> DATE 7/24/81		SEWER PLAN & PROFILE ACCOUNT No. 77-205 DRAWING NUMBER THIRD ST. 380' ± N'LY OF THIRD ST. P.M. 17,402 SCALE: 1" = 40' HORIZ. 1" = 4' VERT.		SHEET 1 OF 2 77-205-B DRAWING NUMBER S-1291	
--	--	---	--	--	--	--	--

* AS BUILT 3-16-84 Pict



BENCH MARK
 10. BRASS DISK STAMPED (ITA) CAPPED AT THE INTERSECTION OF $\frac{1}{2}$ OF THIRD ST. AND $\frac{1}{2}$ OF CHICAGO AVE., C.R.F.B. 7/1/68
 ELEV. = 941.009

* AS BUILT 3-16-84 BIER

ALBERT A. WEBB ASSOCIATES CIVIL ENGINEERS RIVERSIDE, CALIFORNIA APPROVED BY <i>Albert A. Webb</i> DATE 1/14/81 R.E. No. 3876		CITY OF RIVERSIDE, CALIFORNIA PUBLIC WORKS DEPARTMENT APPROVED BY <i>John F. Webb</i> PRINCIPAL ENGINEER PARK DEPARTMENT TRAFFIC DIVISION CHIEF PUB. WKS. ENGR. DATE 12/24/80		SEWER PLAN & PROFILE THIRD ST. 300' E. NUT. OF THIRD ST. F.M. 17,402 SCALE: 1" = 40' HORIZ. ; 1" = 4' VERT.		ACCOUNT No. 79-205 DRAWING NUMBER S-1291 SHEET 2 OF 2 79-205-B
DESIGNED BY <i>JB</i> DRAWN BY <i>JB</i> CHECKED BY <i>JB</i>		REVISIONS MARK DATE 1. REVISED SEWER TO MEET "AS BUILT" EL. 1/10/81 2. 12/24/80		DATE 12/24/80		