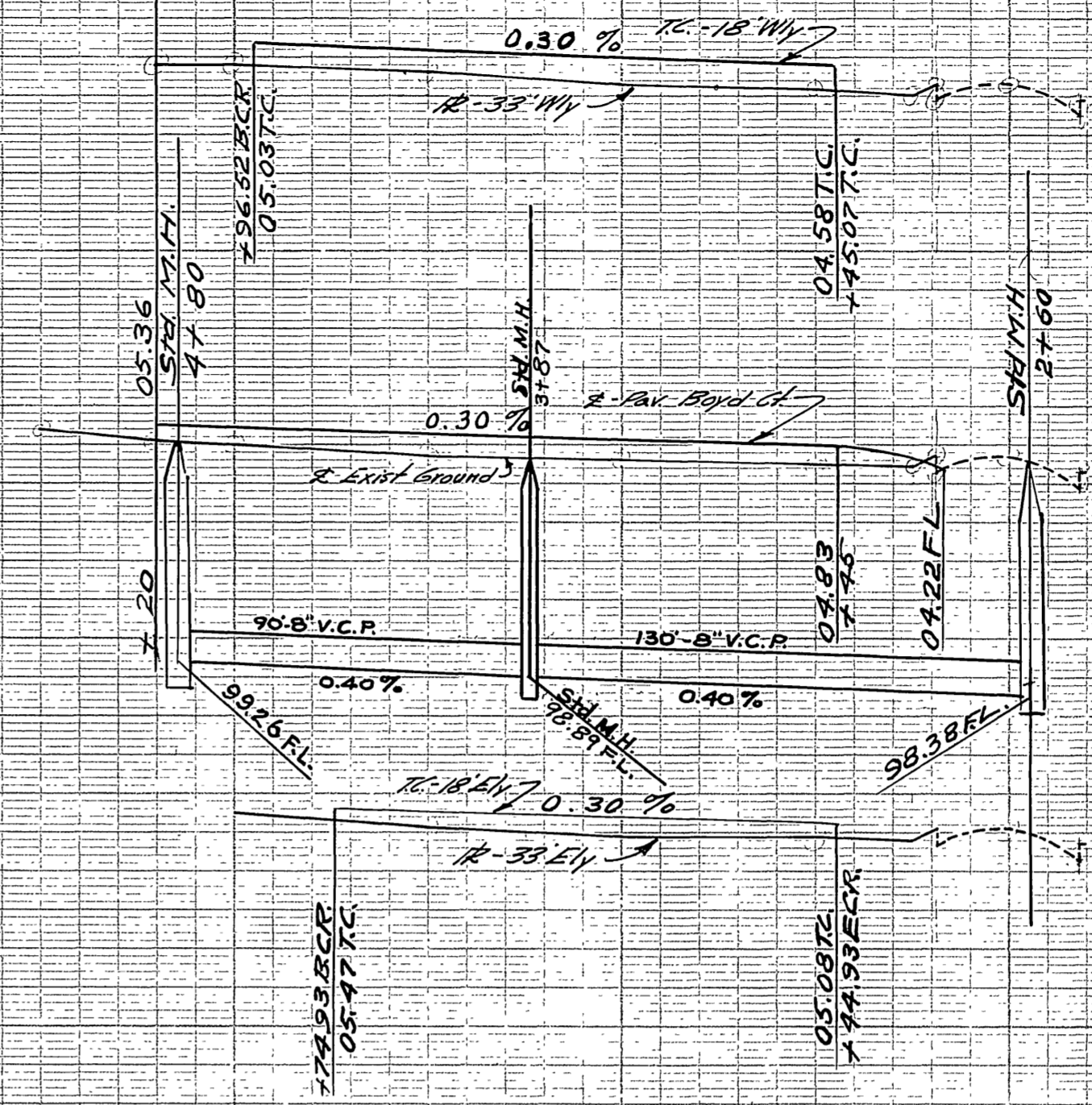
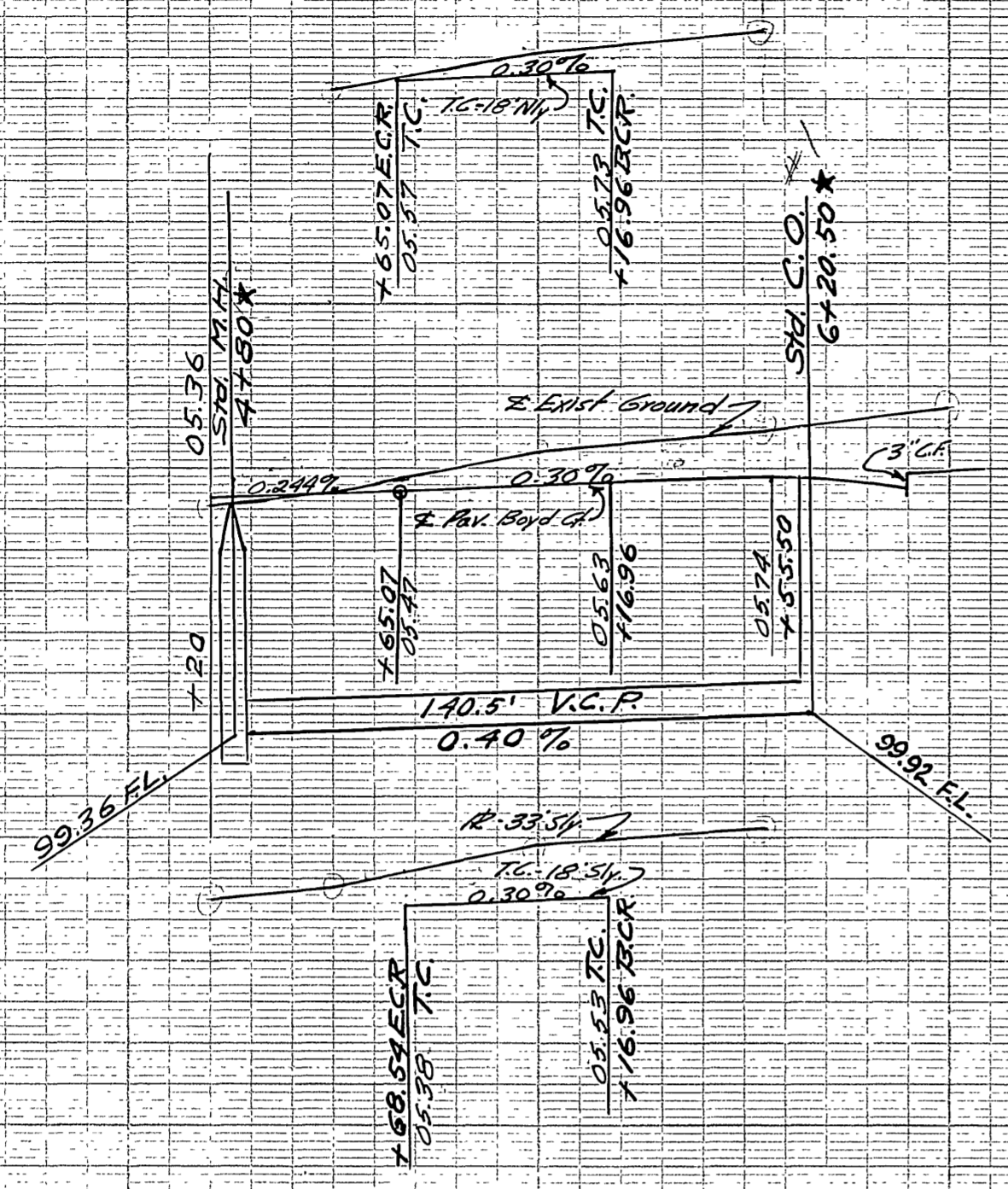


PROPERTY OF  
CITY OF RIVERSIDE  
DEPT. OF PUBLIC WORKS  
ENGINEERING DIVISION

PROPERTY OF  
CITY OF RIVERSIDE  
DEPT. OF PUBLIC WORKS  
ENGINEERING DIVISION



900 - 30' W

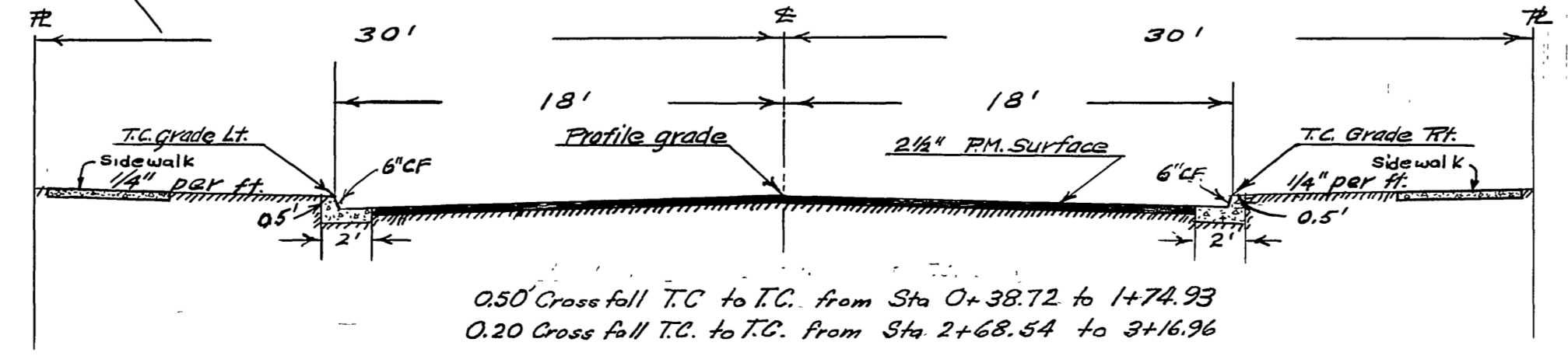
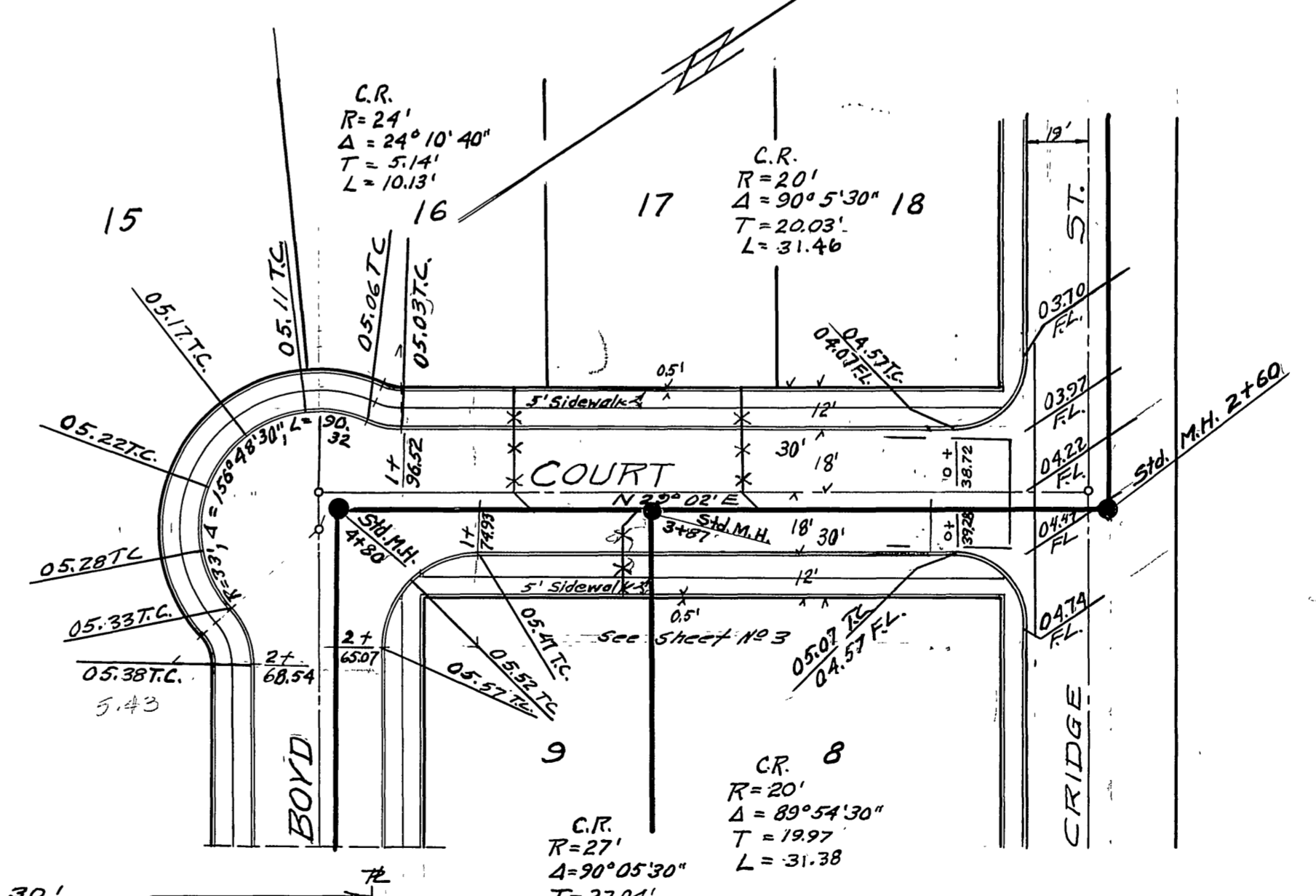
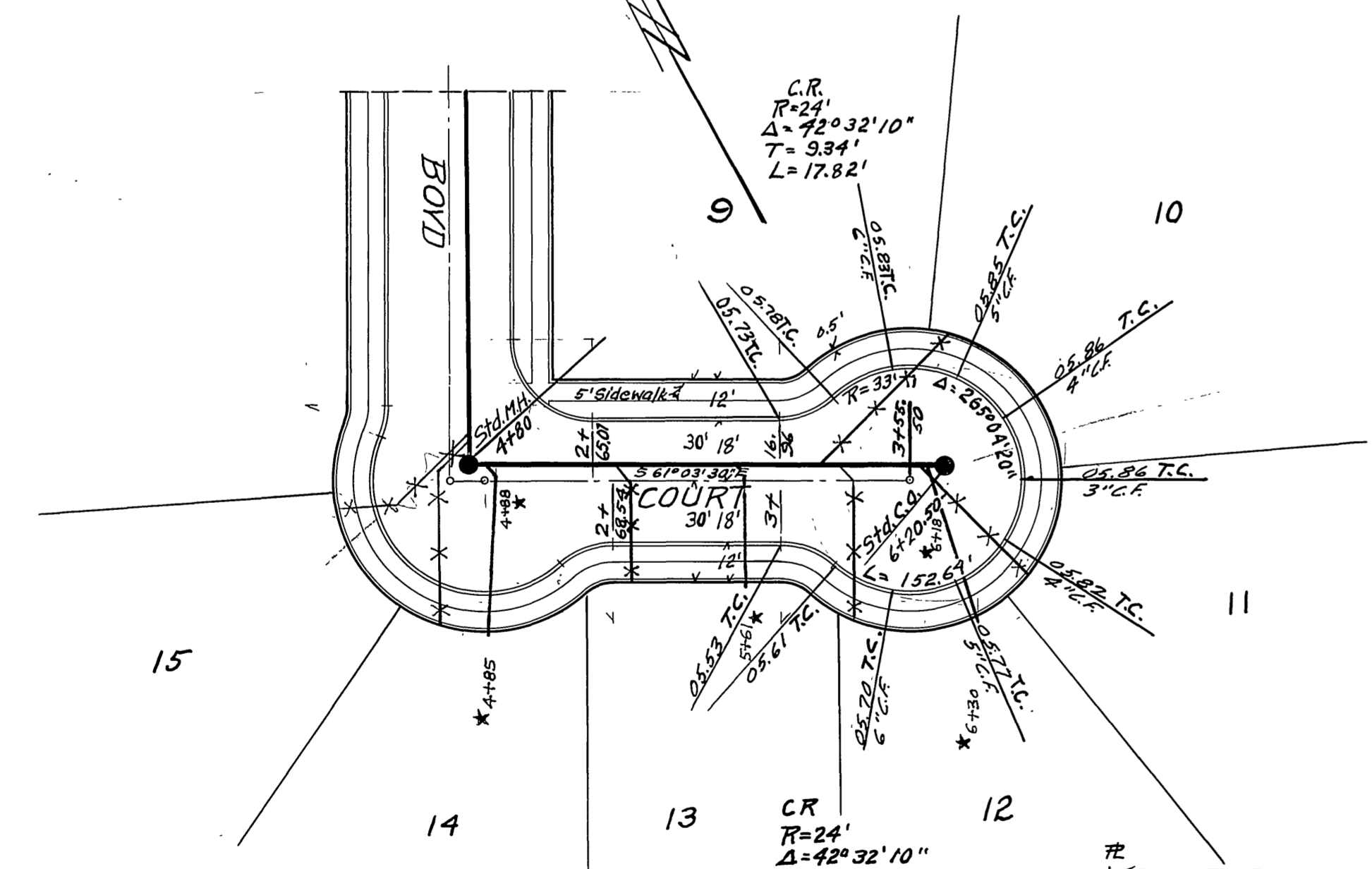
900 - E

900 - 30' E

BENCH MARK  
Nail and tin in N.W. curb return Victoria  
and Cridge  
Elev. 909.82

2 3 4

2 1 0



\* = "As Built" 5-4-59, H.B. Ball

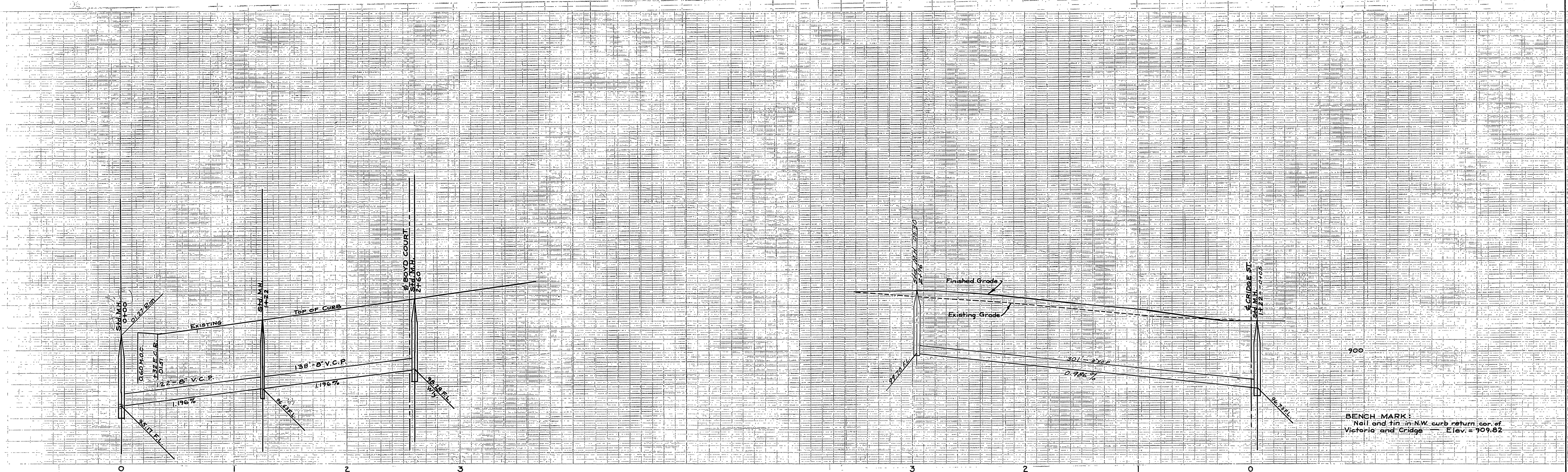
J.F. DAVIDSON - CIVIL ENGINEER  
RIVERSIDE, CALIFORNIA  
APPROVED BY *J.F. Davidson* 4/1/56  
CITY OF RIVERSIDE, CALIFORNIA  
DEPARTMENT OF PUBLIC WORKS  
STREET SEWER PLAN & PROFILE

BOYD COURT  
CRIDGE PARK TRACT  
HORIZ. SCALE 1" = 40' VERT. SCALE 1" = 4'  
APPROVED BY *J.F. Davidson*  
Director of Public Works  
DATE April 12, 1966 SHEET 1 OF 4

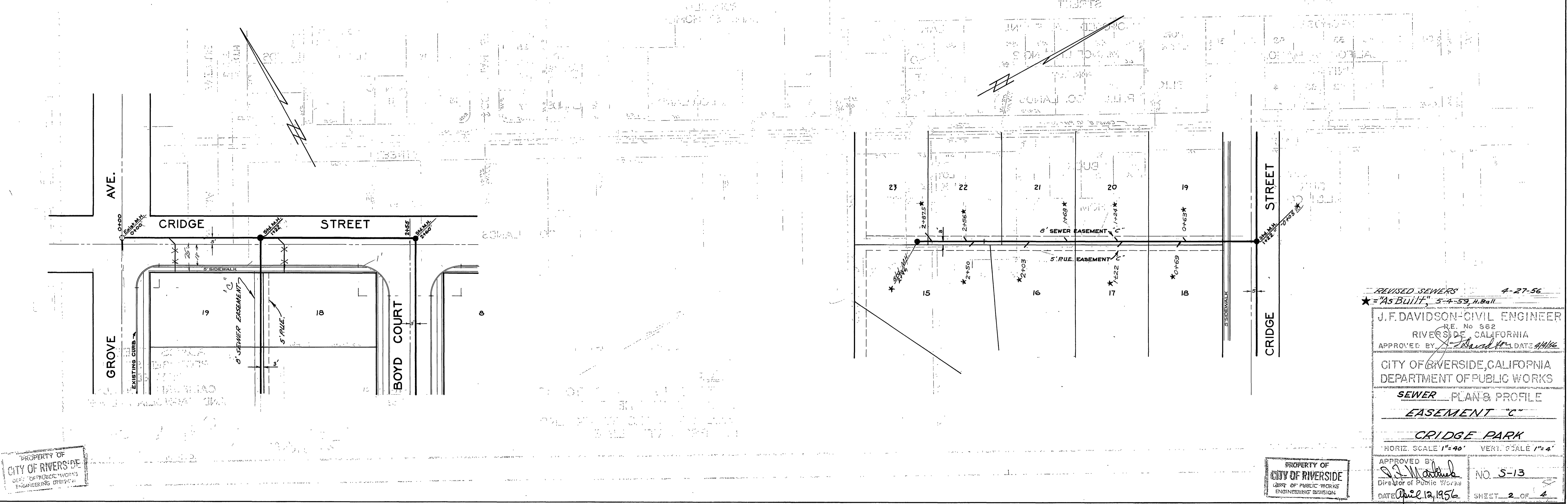
PROPERTY OF  
CITY OF RIVERSIDE  
DEPT. OF PUBLIC WORKS  
ENGINEERING DIVISION

PROPERTY OF  
CITY OF RIVERSIDE  
DEPT. OF PUBLIC WORKS  
ENGINEERING DIVISION





BENCH MARK:  
Nail and tin in N.W. curb return cor. of  
Victoria and Cridge — Elev. = 909.82



REVISED SEWERS 4-27-56  
★ "As Built" 5-4-59, H. Ball

J.F. DAVIDSON - CIVIL ENGINEER  
R.E. No. 562  
RIVERSIDE, CALIFORNIA  
APPROVED BY: *J.F. Davidson* DATE: 4/13/56

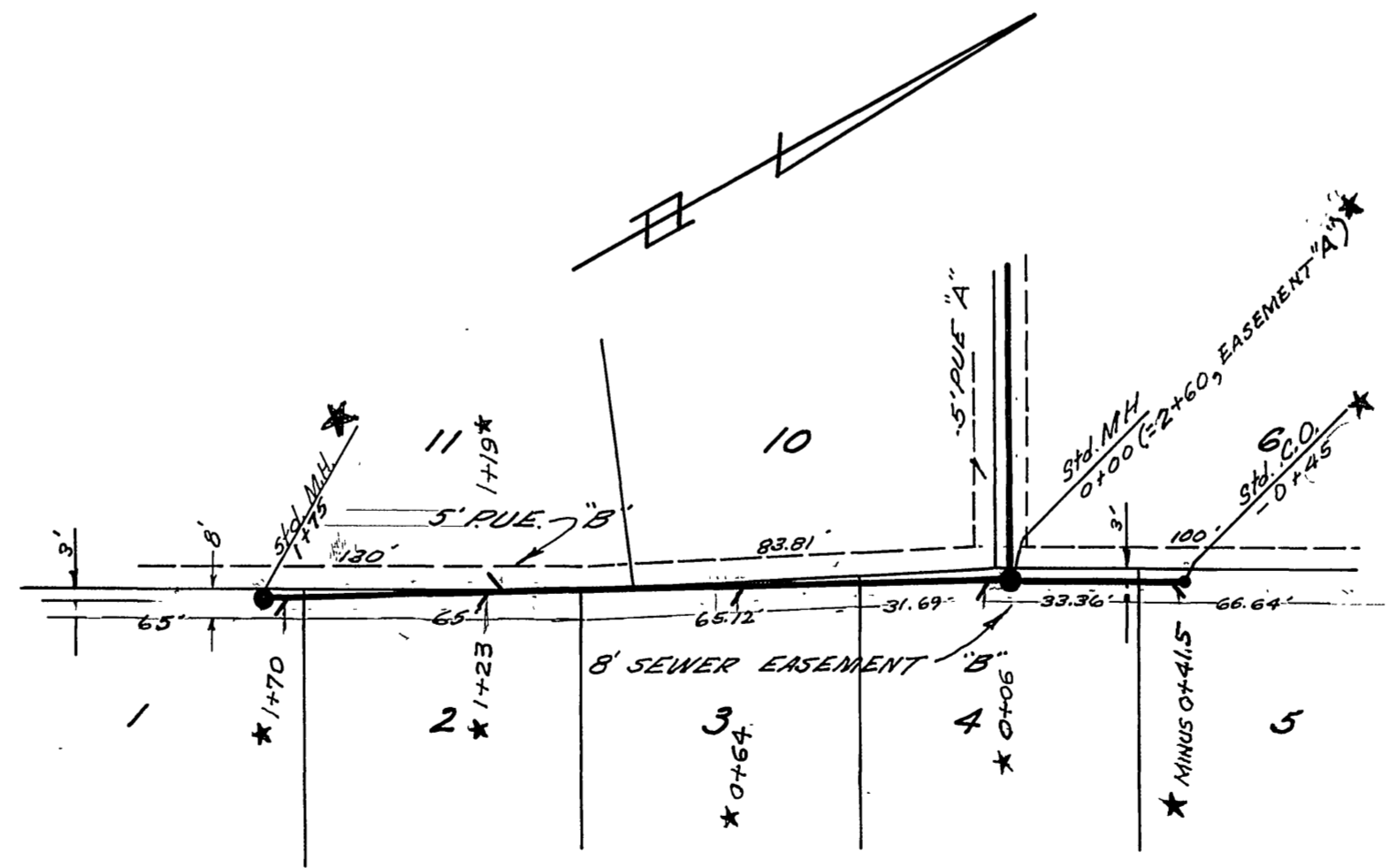
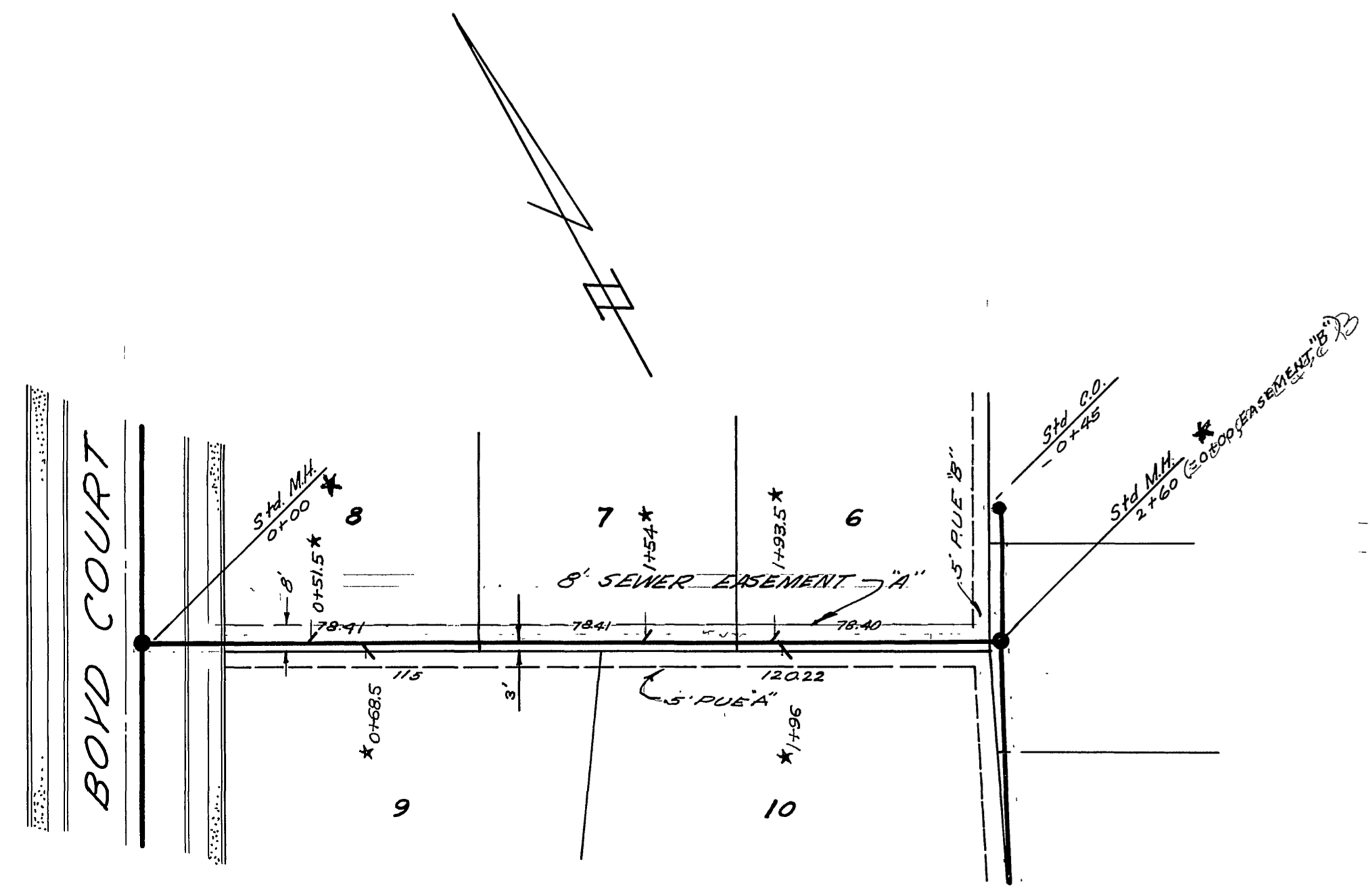
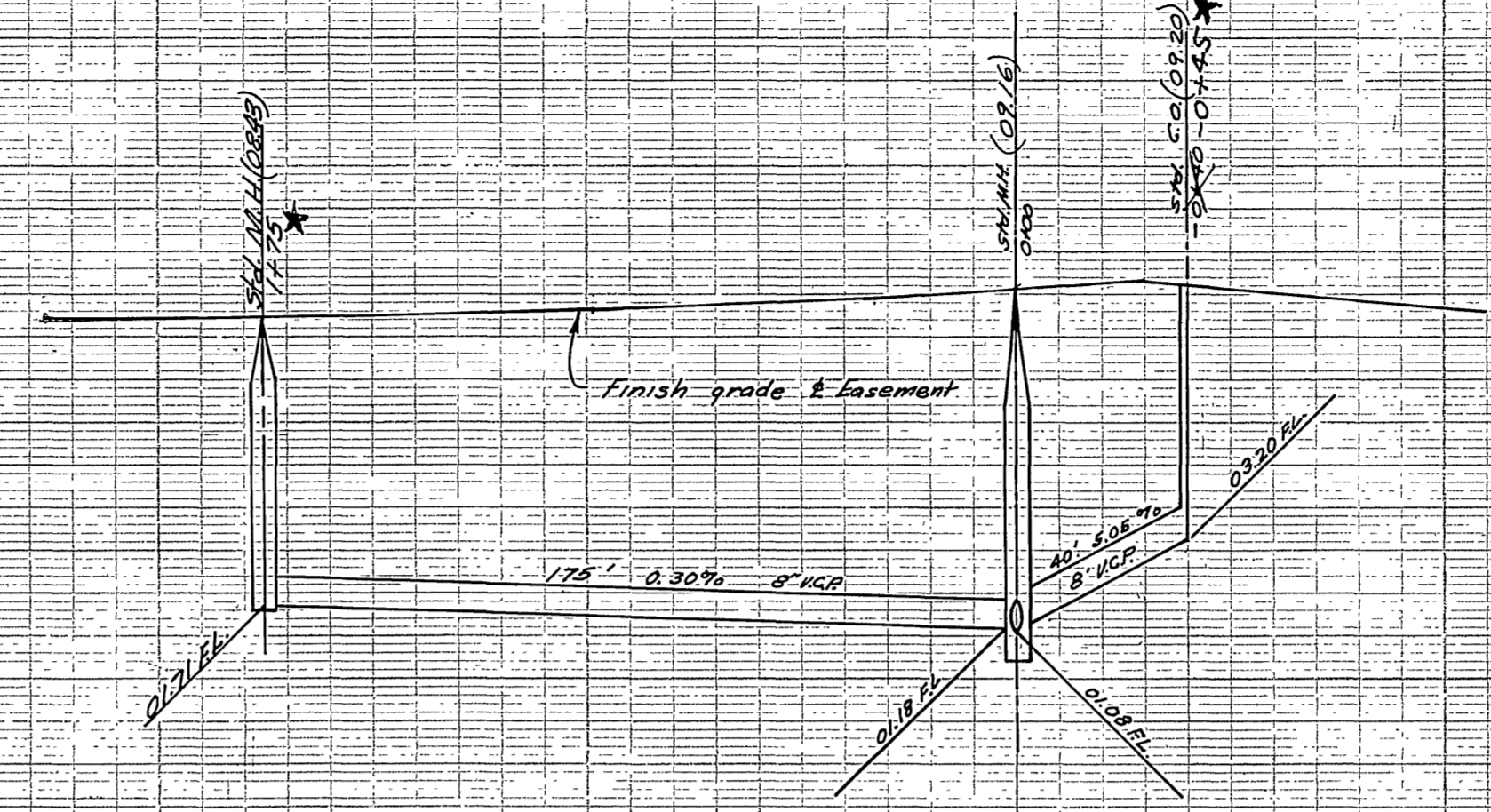
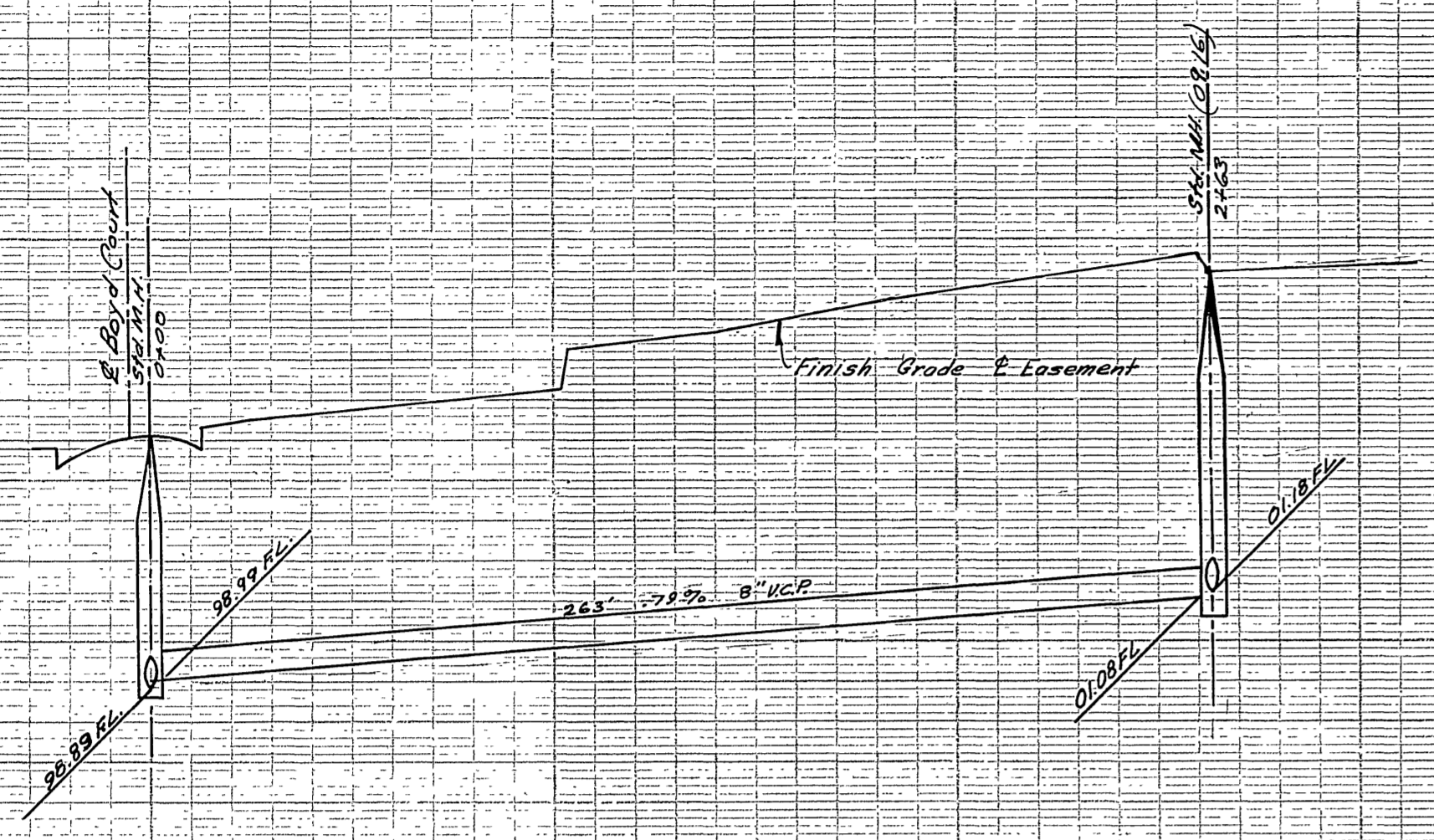
CITY OF RIVERSIDE, CALIFORNIA  
DEPARTMENT OF PUBLIC WORKS

SEWER PLAN & PROFILE  
EASEMENT "C"

CRIDGE PARK  
HORIZ. SCALE 1"=40' VERT. SCALE 1"=4'

APPROVED BY: *J.F. Davidson* NO. 5-13  
DATE: April 12, 1956 SHEET 2 OF 4





\*="As Built" 5-4-59 HBALL  
REVISED SEWERS 4-21-56

J.F. DAVIDSON - CIVIL ENGINEER  
R.E. No. 832  
RIVERSIDE, CALIFORNIA  
APPROVED BY *J.F. Davidson* DATE 4/12/66  
CITY OF RIVERSIDE, CALIFORNIA  
DEPARTMENT OF PUBLIC WORKS  
SEWER PLAN & PROFILE  
EASEMENT "A & B"

CRIDGE PARK  
HORIZ. SCALE 1"=40' VERT. SCALE 1"=4'

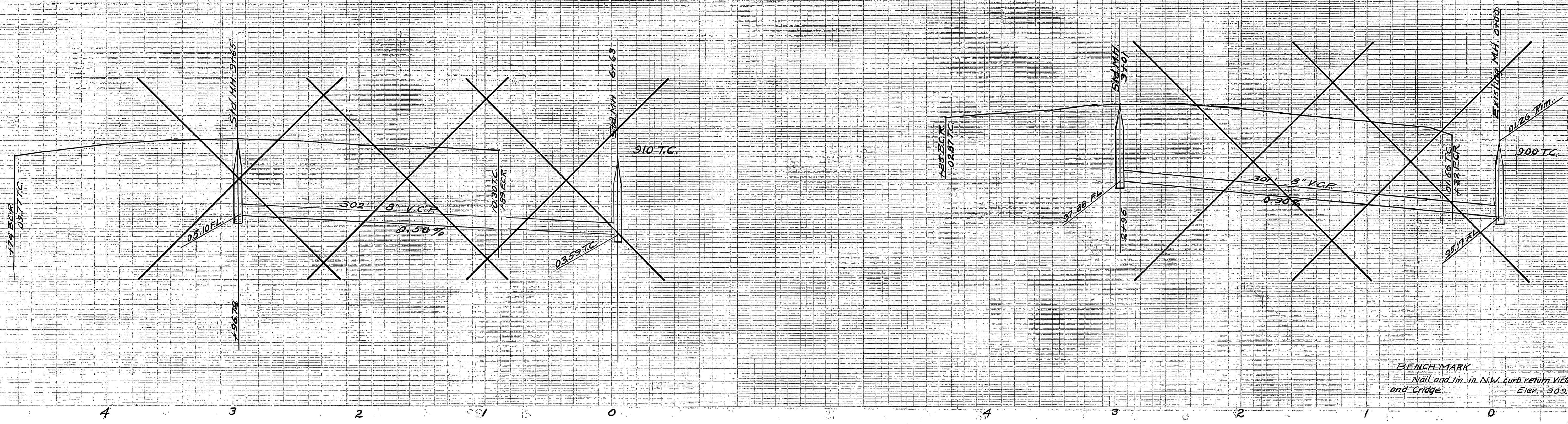
APPROVED BY *S.J. Matlock*  
DIRECTOR OF PUBLIC WORKS  
DATE April 12, 1966  
NO. S-13  
SHEET 3 OF 4



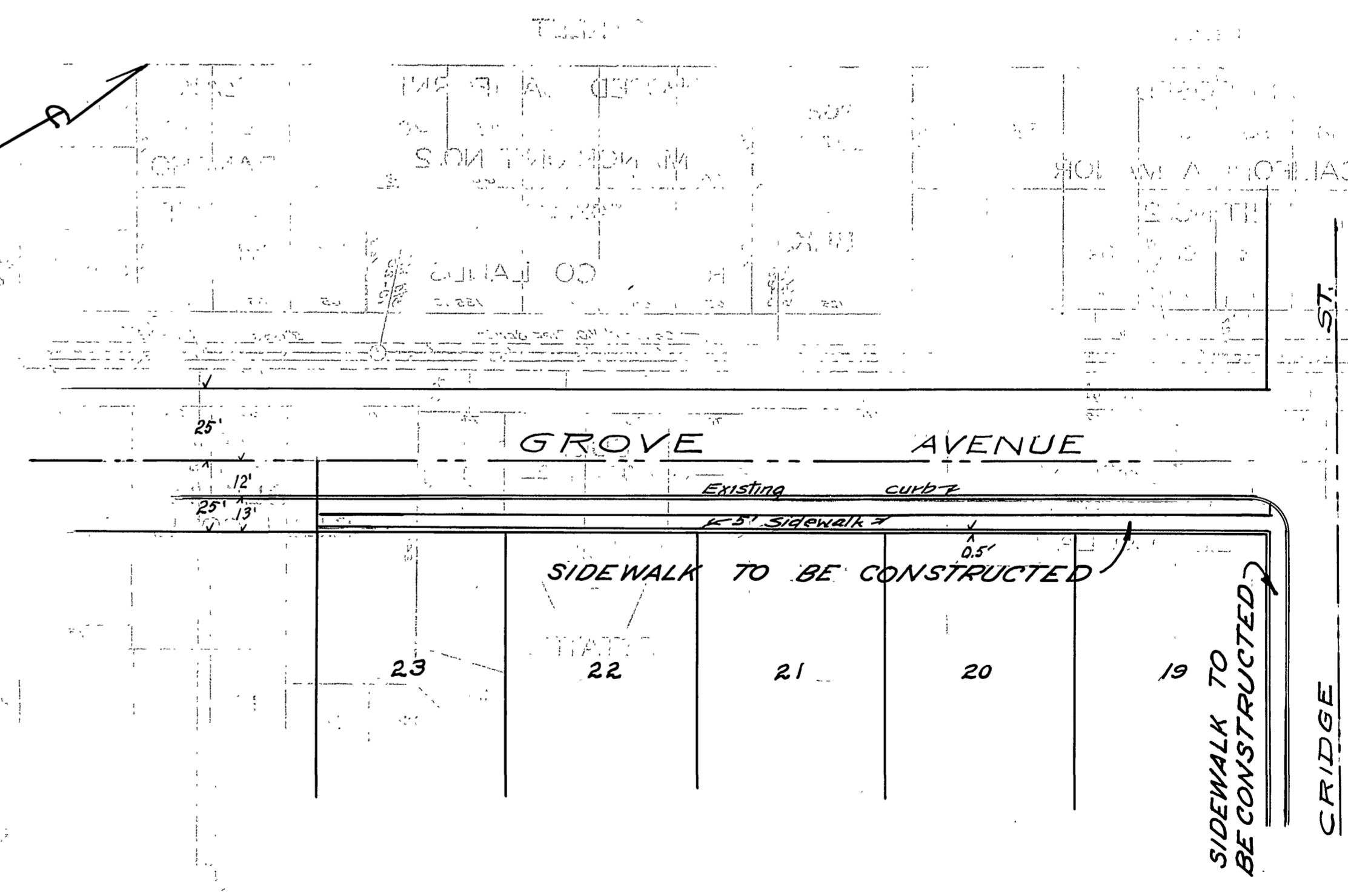
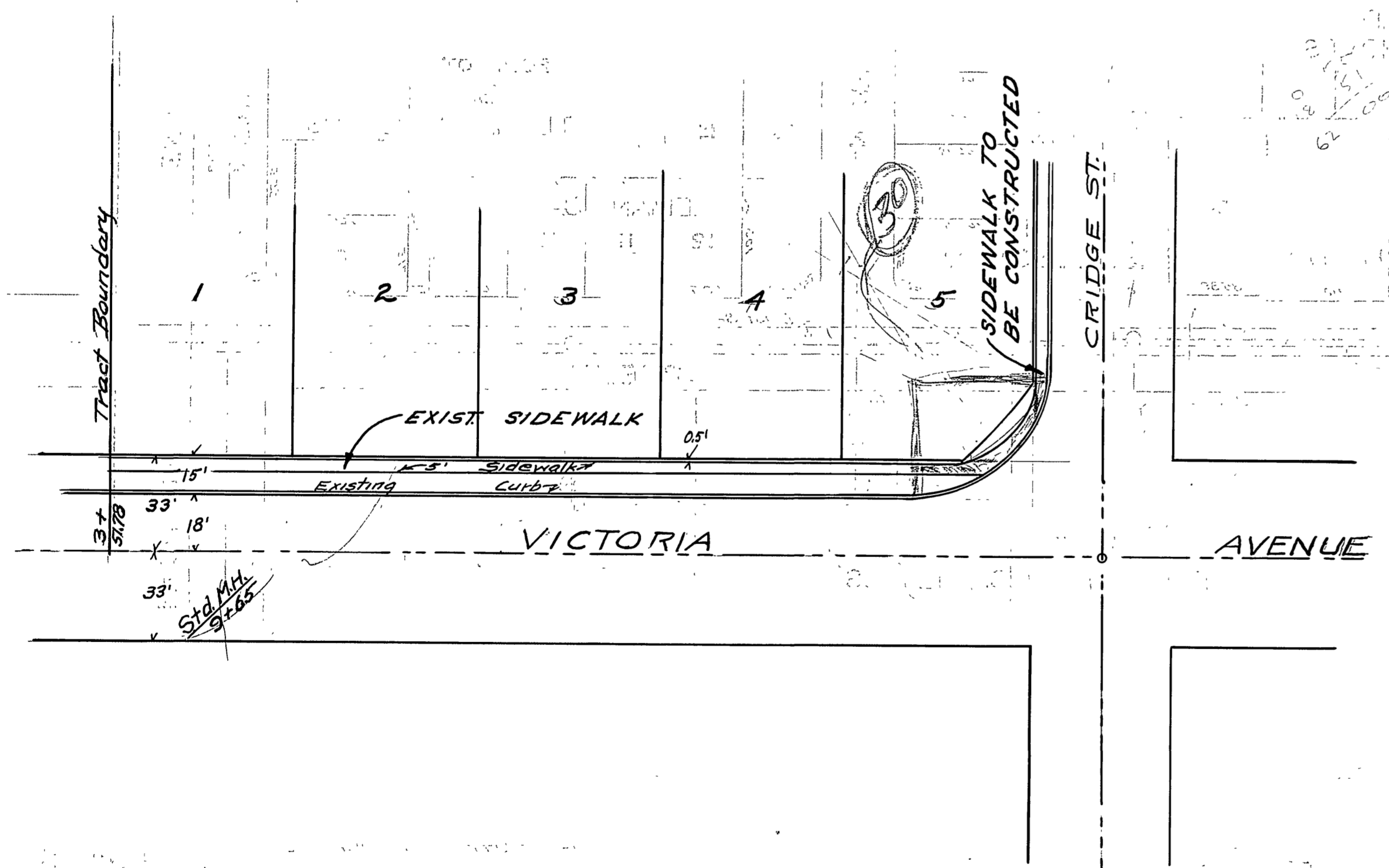
PROPERTY OF  
CITY OF RIVERSIDE  
DEPT. OF PUBLIC WORKS  
ENGINEERING DIVISION

PROPERTY OF  
CITY OF RIVERSIDE  
DEPT. OF PUBLIC WORKS  
ENGINEERING DIVISION

DATE: 4-9-56  
SHEET: 2 OF 2



BENCH MARK  
Nail and 1/4\"/>



PROPERTY OF  
CITY OF RIVERSIDE  
DEPT. OF PUBLIC WORKS  
ENGINEERING DIVISION

PROPERTY OF  
CITY OF RIVERSIDE  
DEPT. OF PUBLIC WORKS  
ENGINEERING DIVISION

J.F. DAVIDSON - CIVIL ENGINEER  
R.E. No. 802  
RIVERSIDE, CALIFORNIA

APPROVED BY \_\_\_\_\_ DATE \_\_\_\_\_

CITY OF RIVERSIDE, CALIFORNIA  
DEPARTMENT OF PUBLIC WORKS

WALK PLAN & PROFILE  
VICTORIA & GROVE AVENUES  
CRIDGE PARK TRACT

HORIZ. SCALE 1"=40' VERT. SCALE 1"=4'

APPROVED BY *J. M. ...*  
Director of Public Works

NO. S-13  
DATE 4-9-56 SHEET 2 OF 2