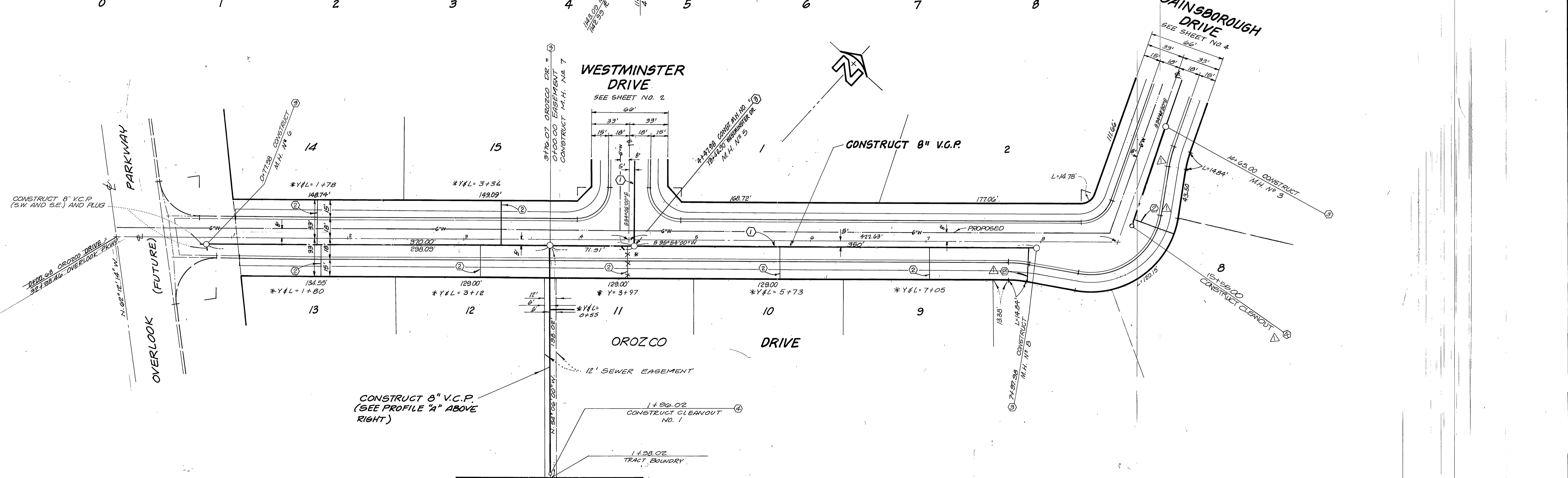
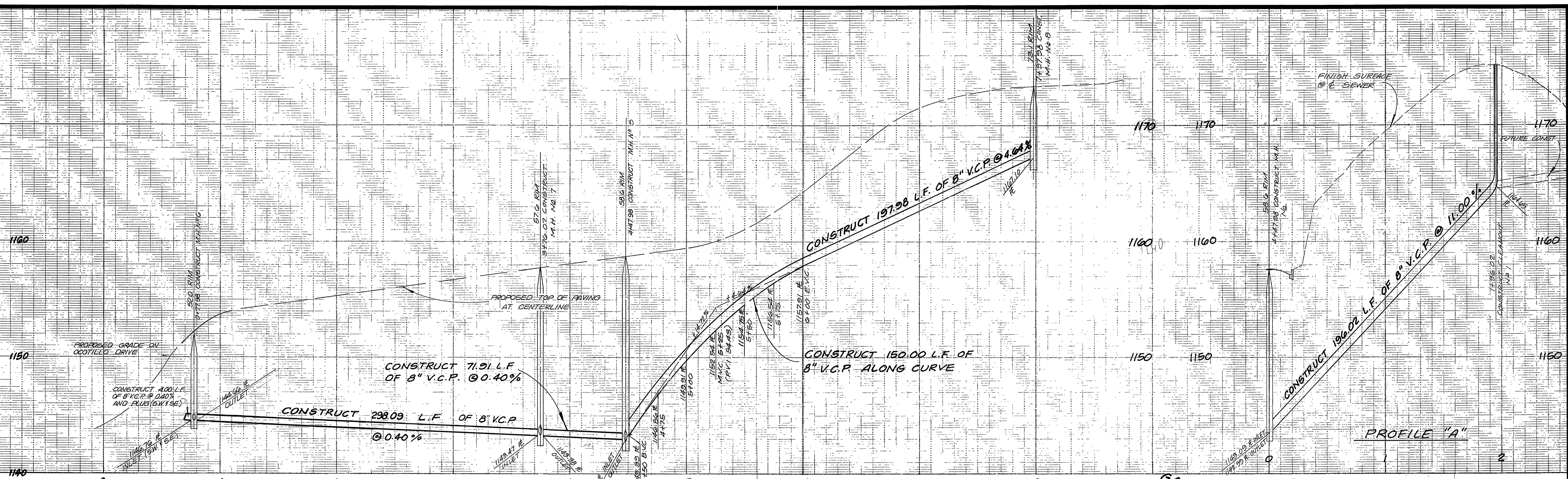


P.M. 15771
P.M.B. 95/51-52

NOTE:
See Sheet 1 of 4 for General Construction Notes.

CITY OF RIVERSIDE DOMESTIC SYSTEM Approved by: <i>Jed Rant</i> Water Systems Manager Date: 3/5/83	L A WAINSCOTT & ASSOCIATES CIVIL ENGINEERS GRAND TERRACE, CALIFORNIA (714) 824-1775 APPROVED BY: <i>L.A. Waincott</i> DATE: 7-21-82 R.C.E. 10036	MARK REVISIONS APPR. DATE DESIGNED BY: ES DRAWN BY: PJ CHECKED BY: ES	BENCH MARK: City Bench Mark No. F7-B Brass disc in concrete mon. on S'ly side of Muirfield Rd. 10' e'ly of P.P. (No #) and 300' e'ly of P.P. # 166147 F.B. 8471/8. Elevation = 1224.783	CITY OF RIVERSIDE, CALIFORNIA DEPARTMENT OF PUBLIC WORKS APPROVED BY: <i>[Signature]</i> DIRECTOR OF PUBLIC WORKS DATE: 3/5/83	SEWER PLAN & PROFILE TRACT NO. 9006-1 WESTMINSTER DRIVE SHT. 2 OF 4	S-1303
				W.O. 18101 FOR J.C. CASHMAN F.B. SCALE: HORIZ.: 1"=40' VERT.: 1"=4' W.O. 18101-B		



NOTE:
SEE SHEET 1 OF 4 FOR GENERAL
AND CONSTRUCTION NOTES.

BENCH MARK
CITY BENCH MARK NO. F7-B. BRASS DISC
IN CONCRETE MAN. ON S.W. SIDE OF MUIRFIELD
RD. 10' ELY OF PP (NO. 4) AND 300' ELY OF
PP #16614.5. F.B. 847.118.
ELEV. = 1294.788

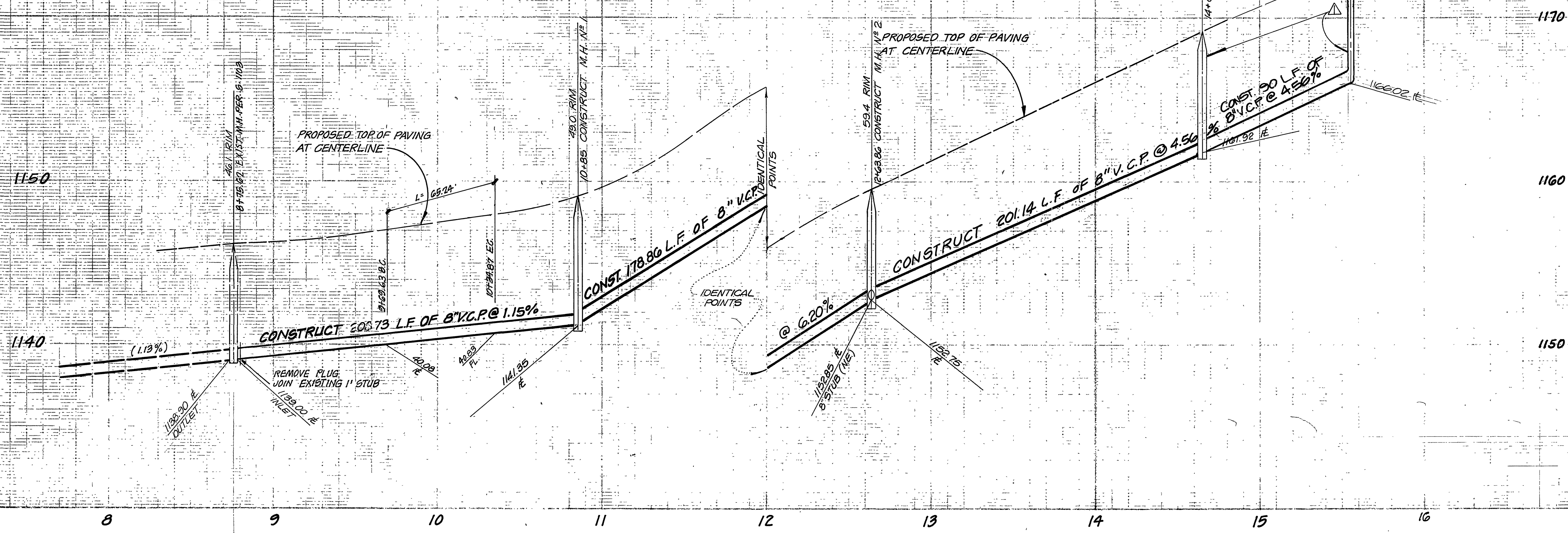
CITY OF RIVERSIDE
DOMESTIC SYSTEM
David V. Garcia 3/20/86
Fred Lentz 3/28/83
WATER SYSTEM MANAGER DATE

L.A. WAINSCOTT & ASSOCIATES
LAND PLANNERS - CIVIL ENGINEERS - LAND SURVEYORS
GRAND TERRACE, CALIFORNIA
(714) 824-1775
APPROVED BY L.A. Waincott DATE 7-21-82
R.C.E. 16056
DESIGNED BY D.B. FOR J.C. CASHMAN DRAWN BY D.B. CHECKED BY A.W. F.B. 4

CITY OF RIVERSIDE, CALIFORNIA
DEPARTMENT OF PUBLIC WORKS
APPROVED BY [Signature] DATE 9/2/86
PRINCIPAL ENGINEER
TRAFFIC DIVISION
CHIEF P.W. ENGR. DATE 9/2

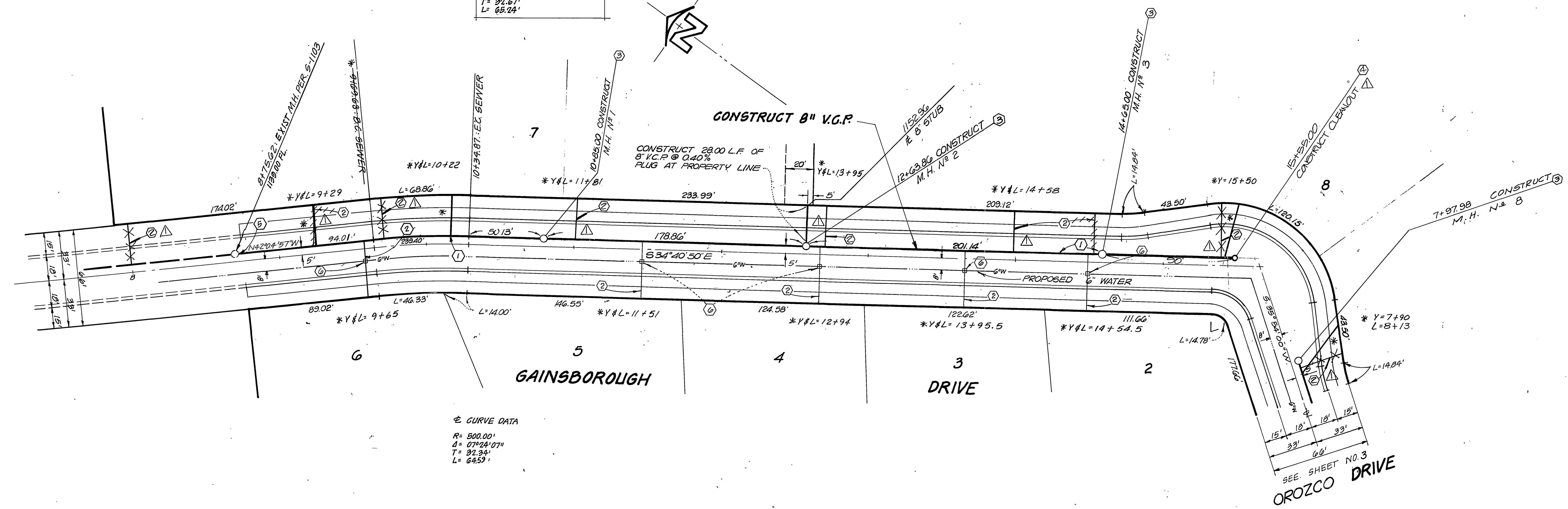
SEWER PLAN & PROFILE
TRACT 9006-1
OROZCO DRIVE
APPROVED BY [Signature] DATE
DIRECTOR OF PUBLIC WORKS

INDEX UP
PROJECT NO. S-1303
SHEET 3 OF 4
HORIZ. SCALE: 1" = 40' VERT. SCALE: 1" = 4' W.O. 18.0'



SEWER LINE CURVE DATA

R=	505.00'
Δ=	07°22'07"
T=	92.67'
L=	65.24'



SEWER CURVE DATA

R=	500.00'
Δ=	07°22'07"
T=	92.67'
L=	65.24'

NOTE:
SEE SHEET 1 OF 4 FOR GENERAL
AND CONSTRUCTION NOTES.

BENCH MARK
CITY BENCH MARK NO. F7-B, BRASS DISC
IN CONCRETE MON. ON S'LY SIDE OF MUIRFIELD
RD. 10' ELY OF PP (NO. 4) AND 300' ELY OF
PP# 10614J. FB 04/7/18
ELEV=1294.788

CITY OF RIVERSIDE
DOMESTIC SYSTEM
BY *David V. Garcia* 3/20/06
BY *Fred Rantz* 3/28/06
WATER SYSTEM MANAGER

L A WAINSCOTT & ASSOCIATES
LAND PLANNERS - CIVIL ENGINEERS - LAND SURVEYORS
GRAND TERRACE, CALIFORNIA
(714) 824-1775
APPROVED BY *L.A. Waincott* DATE 7-21-02
R.C.E. 16056
W.O. 181.01 FOR J.C. CASHMAN F.B. 4

REVISIONS
MARK
DESIGNED BY *D.B.* DRAWN BY *D.B.* CHECKED BY *A.W.*

CITY OF RIVERSIDE, CALIFORNIA
DEPARTMENT OF PUBLIC WORKS
APPROVED BY
PRINCIPAL ENGINEER
TRAFFIC DIVISION
CHIEF P. W. ENGR. *[Signature]* DATE 5/3

SEWER PLAN & PROFILE
TRACT 9006-1
GAINSBOROUGH DRIVE
HORIZ. SCALE: 1" = 40'
VERT. SCALE: 1" = 4'

PROJECT NO.
S-1303
SHEET 4 OF 4
W.O. 181.01