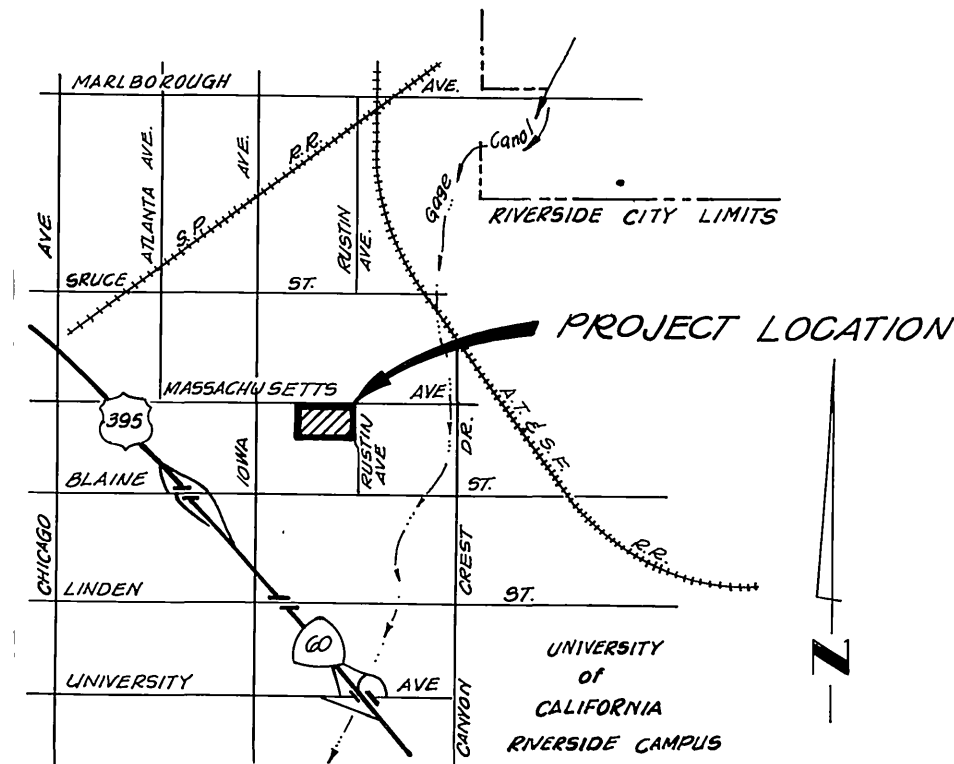


INDEX MAP



VICINITY MAP
NOT TO SCALE

GENERAL NOTES:

1. CONSTRUCTION SHALL BE IN ACCORDANCE WITH THE STANDARD SPECIFICATIONS FOR PUBLIC WORKS CONSTRUCTION 1982 EDITION, AND THE CITY OF RIVERSIDE DEPARTMENT OF PUBLIC WORKS STANDARDS SPECIFICATIONS.
3. PIPE SHALL BE BEDDED PER CASE I, STANDARD DRAWING NO. 452, UNLESS OTHERWISE SPECIFIED ON THE PLANS.
4. LOCATION OF WYES AND LATERALS TO BE DETERMINED IN THE FIELD AT THE DIRECTION OF THE OWNER. AVOID CONFLICT WITH PROPOSED AND/OR EXISTING FACILITIES.
5. ALL STUBS AND LATERALS TO BE CONSTRUCTED IN ACCORDANCE WITH STANDARD DRAWING NO. 562 STUBS SHALL BE PLUGGED AND CAPPED.
6. THE SEWER CONTRACTOR SHALL ADJUST MANHOLES TO FINAL GRADE AFTER PAVING IS COMPLETED.
7. LATERALS ARE TO BE 4" V.C.P. AND EXTENDED TO PROPERTY LINE.
8. CONTRACTOR IS TO VERIFY EXISTING SEWER ELEVATIONS PRIOR TO CONSTRUCTION.
9. A PLUG SHALL BE INSTALLED AND WILL REMAIN IN PLACE WHERE THE NEW SEWER CONNECTS WITH THE EXISTING SEWER UNTIL SUCH TIME AS THE NEW SEWER IS ACCEPTED BY THE CITY.
10. THE PRIVATE ENGINEER SIGNING THESE PLANS IS RESPONSIBLE FOR THE ACCURACY AND ACCEPTABILITY OF THE WORK HEREON. IN THE EVENT OF DISCREPANCIES ARISING DURING CONSTRUCTION, THE PRIVATE ENGINEER SHALL BE RESPONSIBLE FOR DETERMINING AN ACCEPTABLE SOLUTION, AND REVISING THE PLANS FOR APPROVAL BY THE CITY.
11. NO FINISHED FLOOR ELEVATION SHALL BE LESS THAN 4' ABOVE THE SEWER FLOW LINE AT POINT OF CONNECTION WITHOUT HAVING A PROPER BACKWATER VALVE INSTALLED IN THE LATERAL.
12. SEWER/WATER LINE ENCASEMENT SHALL CONFORM TO CITY WATER DIVISION STANDARDS CWD-022 AND CWD-023.

NOTICE TO CONTRACTOR

THE EXISTENCE AND LOCATION OF UNDERGROUND UTILITY PIPES OR STRUCTURES SHOWN ON THESE PLANS ARE OBTAINED BY A SEARCH OF THE AVAILABLE RECORDS TO THE BEST OF OUR KNOWLEDGE THERE ARE NO EXISTING UTILITIES EXCEPT AS SHOWN ON THESE PLANS.

THE CONTRACTOR IS REQUIRED TO TAKE DUE PRECAUTIONARY MEASURES TO PROTECT THE UTILITY LINES SHOWN AND ANY OTHER LINES NOT OF RECORD OR NOT SHOWN ON THESE PLANS.

BENCH MARK:

CRFB 951/20
CHISELED "X" ON TOP HEADWALL AT N.W.
CORNER SPRUCE & IOWA. ELEV. = 961.72

AS BUILT 6/6/85

INDEXED - RJE WF

CITY OF RIVERSIDE
DOMESTIC SYSTEM
Fred Lantz
WATER SYSTEMS MANAGER
DATE 1/16/82

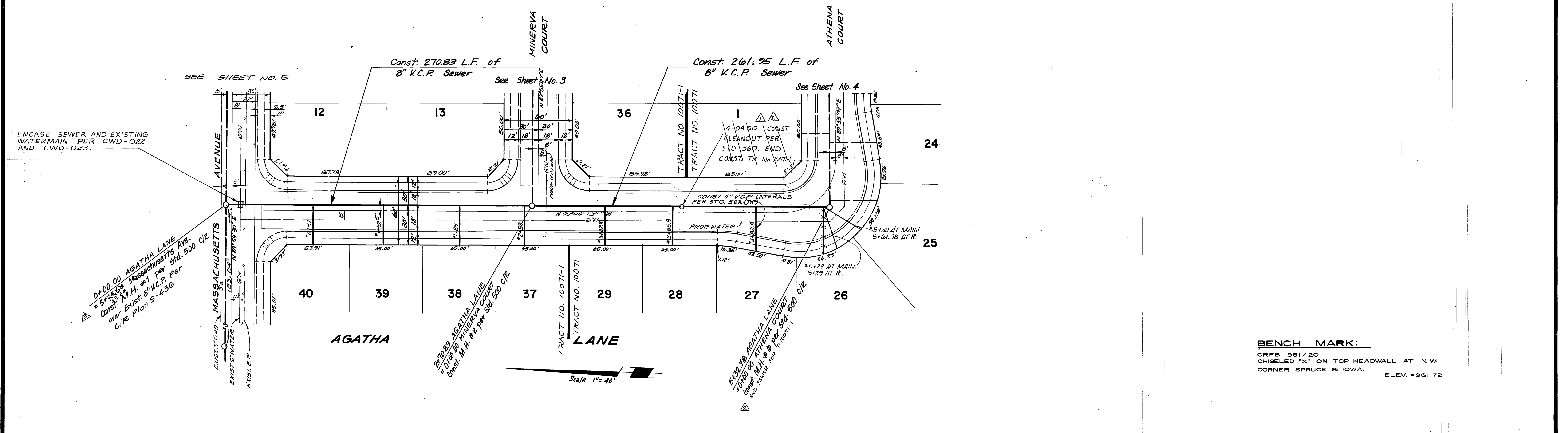
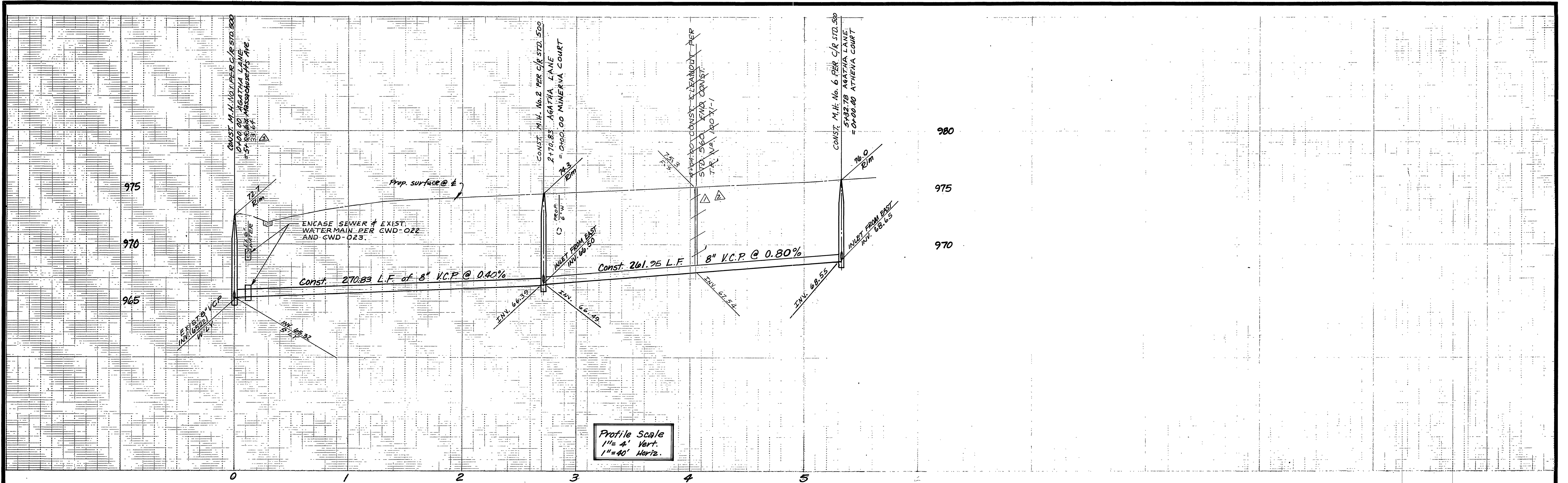
TERRA CIVIL ENGINEERS, INC.
3150 EAST LA PALMA AVE SUITE "B"
ANAHEIM CALIFORNIA 92806
PHONE (714) 632-6935
Everett Kjerulff
EVERETT KJERULFF R.C.E. 23056

MARK	REVISIONS	APPR	DATE
DESIGNED BY E.K.	DRAWN BY CSS	CHECKED BY	

CITY OF RIVERSIDE, CALIFORNIA
DEPARTMENT OF PUBLIC WORKS
APPROVED BY: *[Signature]*
DATE: 12-22-82
PRINCIPAL ENGINEER
PARK DEPARTMENT
TRAFFIC DIVISION
CHIEF P.W. ENGR

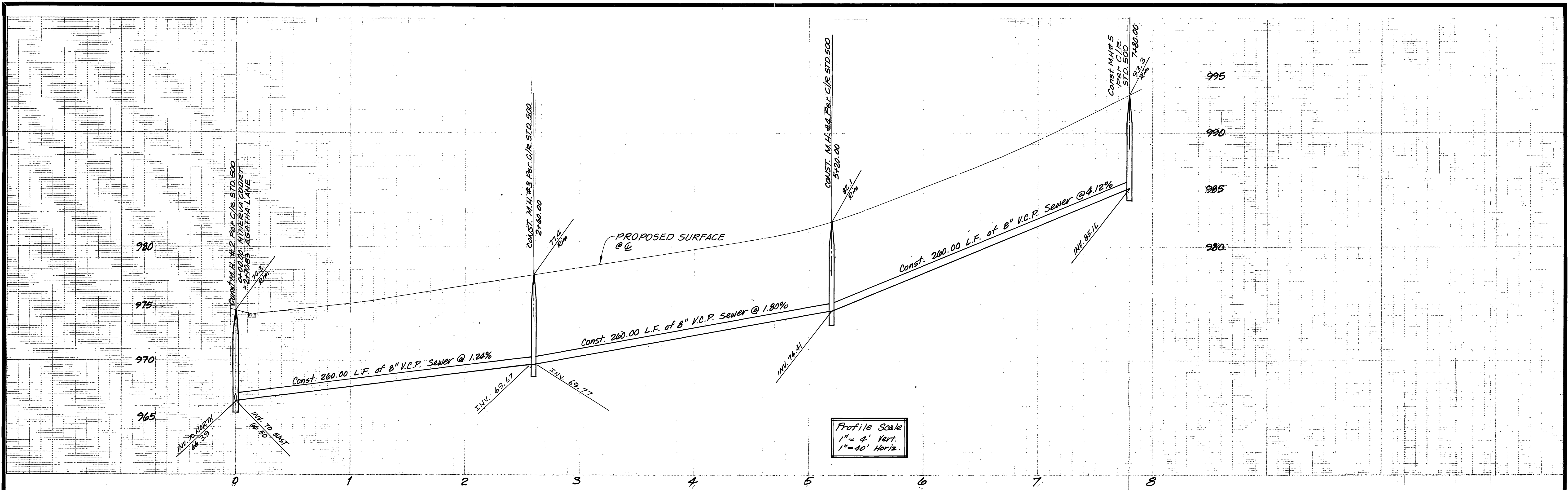
SEWER PLAN AND PROFILE
TITLE SHEET
TRACT No 10071
HORIZ SCALE: 1" = 40'
VERT SCALE: 1" = 4'

PROJECT No.
S-1307
SHEET 1 OF 5
FILE No.

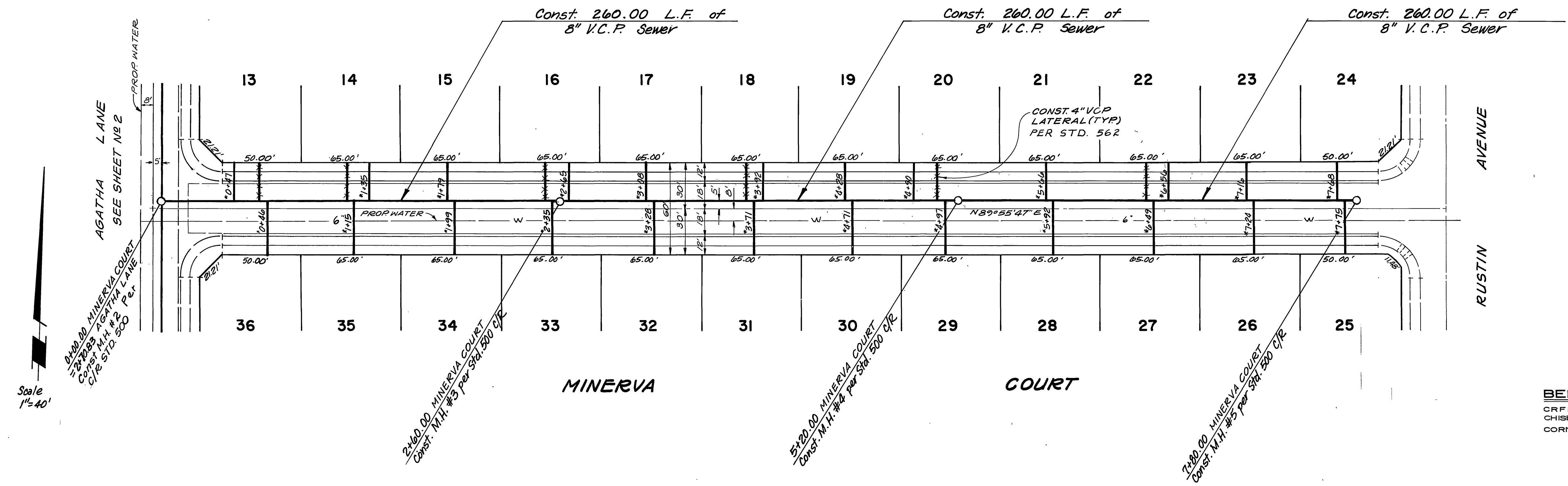


BENCH MARK:
CRFB 951/20
CHISELED "X" ON TOP HEADWALL AT N.W.
CORNER SPRUCE & IOWA. ELEV. = 961.72

CITY OF RIVERSIDE DOMESTIC SYSTEM <i>Fred Lamb</i> WATER SYSTEMS MANAGER DATE 11/6/82	TERRA CIVIL ENGINEERS, INC. 3150 EAST LA PALMA AVE. SUITE "B" ANAHEIM CALIFORNIA 92806 PHONE (714) 632-6935 <i>Everett Kjerulff</i> EVERETT KJERULFF RCE 23056	CITY OF RIVERSIDE, CALIFORNIA DEPARTMENT OF PUBLIC WORKS APPROVED BY: <i>William D. Anderson</i> PRINCIPAL ENGINEER PARK DEPARTMENT TRAFFIC DIVISION DATE 12-22-82	SEWER PLAN AND PROFILE AGATHA LANE TRACT No 10071 HORIZ SCALE: 1" = 40' VERT SCALE: 1" = 4'	PROJECT NO. S-1307 SHEET 2 OF 5 FILE NO.
				DESIGNED BY E.K. DRAWN BY C.S.S. CHECKED BY G.K.



Profile Scale
 1" = 4' Vert.
 1" = 40' Horiz.



Scale
 1" = 40'

BENCH MARK:
 CRFB 951/20
 CHISELED "X" ON TOP HEADWALL AT N.W.
 CORNER SPRUCE & IOWA.
 ELEV. = 961.72

*AS BUILT 6/7/85 INDEXED - Dick W

CITY OF RIVERSIDE
 DOMESTIC SYSTEM
 Fred Rantz
 WATER SYSTEMS MANAGER
 11/6/12
 DATE

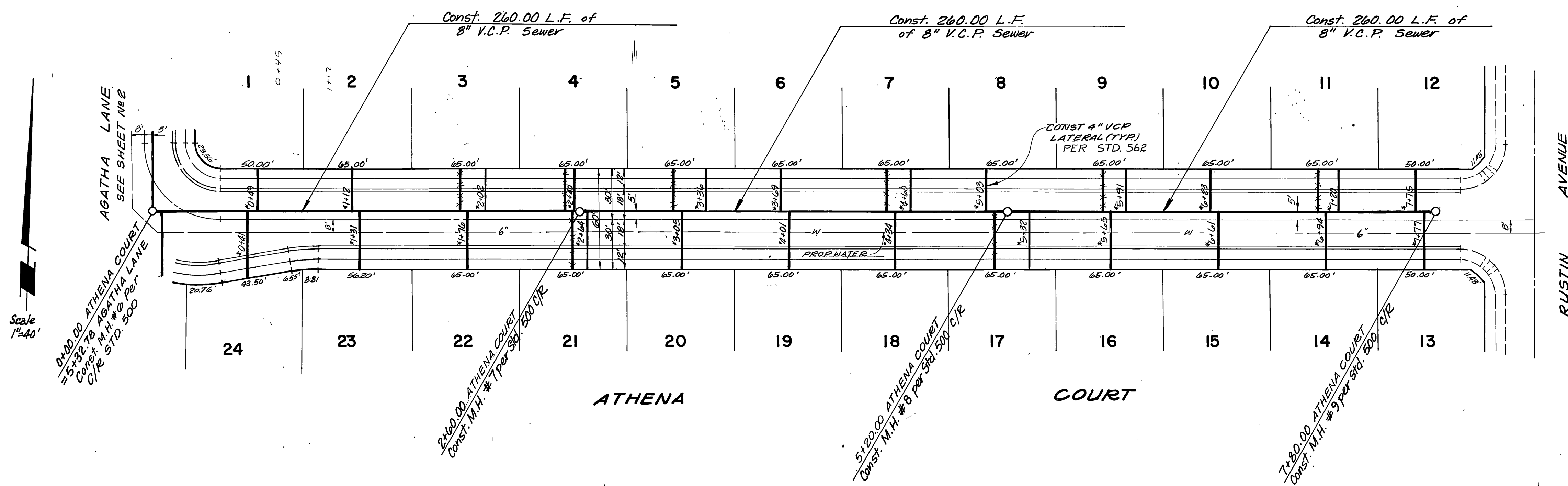
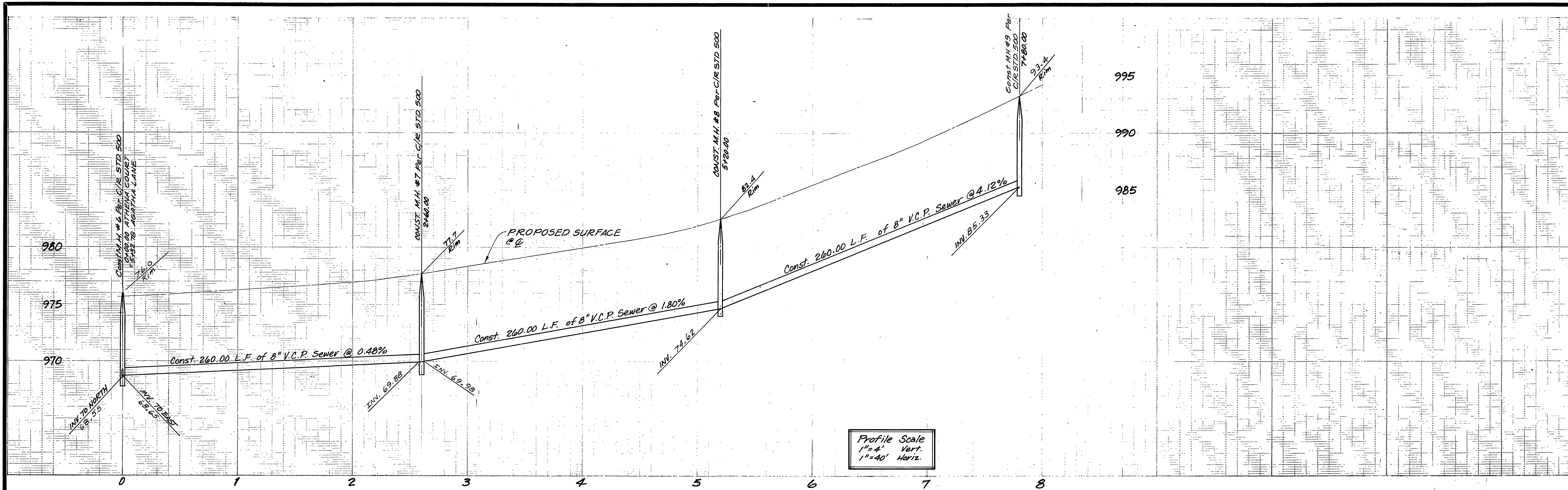
TERRA CIVIL ENGINEERS, INC.
 3150 EAST LA PALMA AVE. SUITE "B"
 ANAHEIM CALIFORNIA 92806
 PHONE (714) 632-6935
 Everett Kjerulf
 EVERETT KJERULFF RCE. 23056

MARK	REVISIONS	APPR	DATE
DESIGNED BY: E.K.	DRAWN BY: CSB	CHECKED BY: SK	DATE: 12-22-82

CITY OF RIVERSIDE, CALIFORNIA
 DEPARTMENT OF PUBLIC WORKS
 APPROVED BY: [Signature]
 PRINCIPAL ENGINEER
 PARK DEPARTMENT
 TRAFFIC DIVISION
 CHIEF P.W. ENGR.
 DATE: 12-22-82

SEWER PLAN AND PROFILE
 MINERVA COURT
 TRACT No 10071
 HORIZ. SCALE: 1" = 40'
 VERT. SCALE: 1" = 4'

PROJECT No.
 S-1307
 SHEET 3 OF 5
 FILE No.



BENCH MARK:
 CRFB 951/20
 CHISELED "X" ON TOP HEADWALL AT N.W.
 CORNER SPRUCE & IOWA. ELEV. = 961.72

*AS BUILT 6/7/85 INDEXED R.I.E. W

CITY OF RIVERSIDE
 DOMESTIC SYSTEM
 Fred Lantz
 WATER SYSTEMS MANAGER
 11/6/87
 DATE

TERRA CIVIL ENGINEERS, INC.
 3150 EAST LA PALMA AVE SUITE "B"
 ANAHEIM CALIFORNIA 92806
 PHONE (714) 632-6935
 Everett Kjerulff
 EVERETT KJERULFF R.C.E. 23056

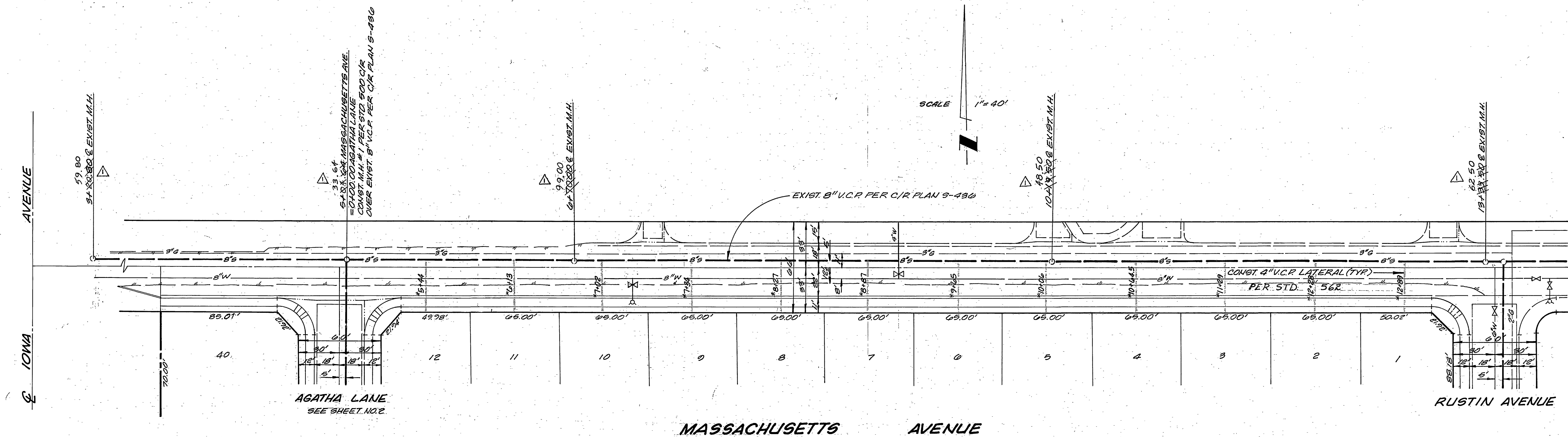
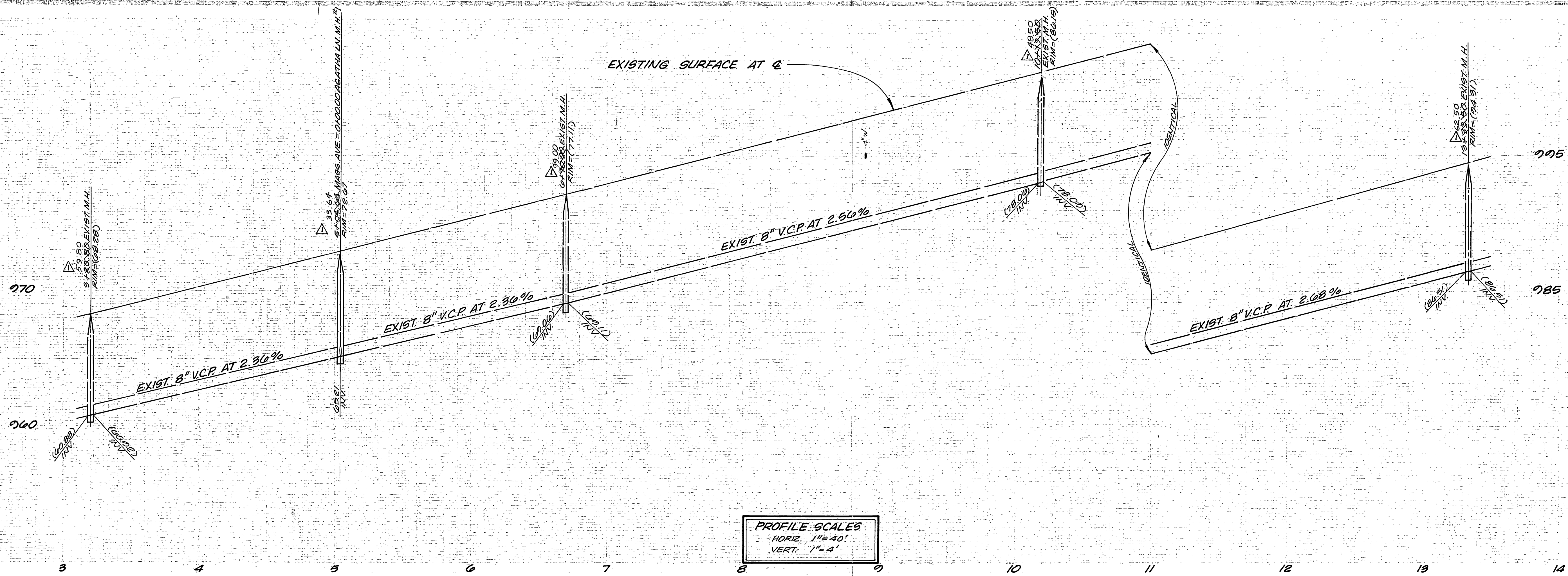
MARK	REVISIONS	APPR	DATE

DESIGNED BY: E.K. DRAWN BY: C.S.S. CHECKED BY: E.K.

CITY OF RIVERSIDE, CALIFORNIA
 DEPARTMENT OF PUBLIC WORKS
 APPROVED BY: [Signature]
 PARK DEPARTMENT
 TRAFFIC DIVISION
 CHIEF P.W. ENGR.
 DATE 12-22-87

SEWER PLAN AND PROFILE
 ATHENA COURT
 TRACT. NO 10071
 HORIZ SCALE: 1" = 40'
 VERT SCALE: 1" = 4'

PROJECT NO. S-1307
 SHEET 4 OF 5
 FILE NO.



BENCH MARK:
 CRFB 951/20
 CHISELED 'X' ON TOP HEADWALL AT NW
 CORNER SPRUCE & IOWA. ELEV. = 961.72

CITY OF RIVERSIDE DOMESTIC SYSTEM <i>Fred Rant</i> 11/16/82 WATER SYSTEMS MANAGER	TERRA CIVIL ENGINEERS, INC. 3150 EAST LA PALMA AVE SUITE "B" ANAHEIM, CALIFORNIA 92806 PHONE (714) 632-6935 <i>Ernest Kjerulff</i> EVERETT KJERULFF RCE 23056	CITY OF RIVERSIDE, CALIFORNIA DEPARTMENT OF PUBLIC WORKS APPROVED BY: <i>William D. ...</i> DIRECTOR OF PUBLIC WORKS DATE: 12-22-82	*AS BUILT 6/7/85 INDEXED - <i>Rid</i> PROJECT NO. 100-66 TRACT 10071 MASSACHUSETTS AVENUE SHEET 5 OF 5