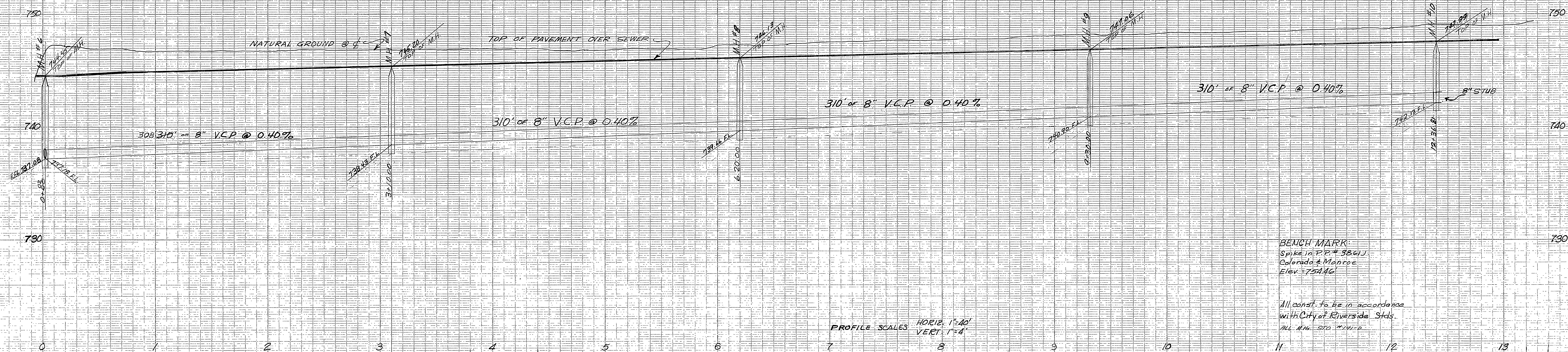


L. FREDERICK PACK R.E. 7448 COVINA, CALIFORNIA	
APPROVED BY: <i>[Signature]</i> DATE: 2-2-58	
CITY OF RIVERSIDE, CALIFORNIA DEPARTMENT OF PUBLIC WORKS	
SEWER PLAN & PROFILE BROCKTON HEIGHTS NO. 7 SAN VICENTE AVE. FROM MONTICELLO AVE TO 1320' N.E.L.V.	
HOR SCALE 1"=40'	VERT SCALE 1"=4'
APPROVED BY: <i>[Signature]</i> Director of Public Works	NO. 5-131
J.B. DATE: 7 August 1958	SHEET 1 OF 2

"As Built" House Connections, 10/27/58 H.B. 111

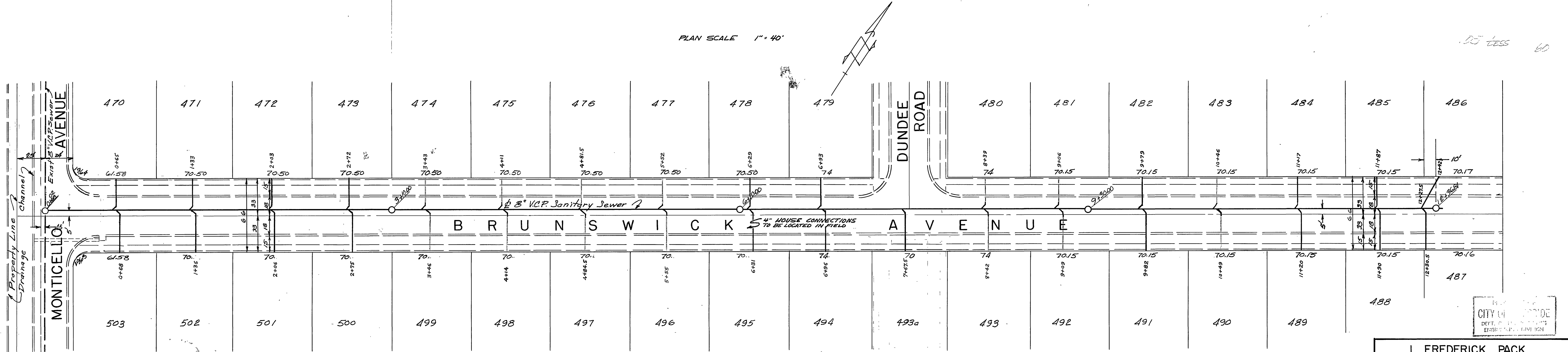


BENCH MARK:
Spike in P.P. # 3861J
Colorado & Monroe
Elev = 754.46'

All const. to be in accordance
with City of Riverside Stds.
P.W. M.H. 570 11/1-2

PROFILE SCALES
HORIZ. 1"=40'
VERT. 1"=4'

PLAN SCALE 1"=40'



05 less 60

L. FREDERICK PACK
R.E. 7448
COVINA, CALIFORNIA

APPROVED BY: *[Signature]* DATE: 7-7-58

CITY OF RIVERSIDE, CALIFORNIA
DEPARTMENT OF PUBLIC WORKS

SEWER PLAN & PROFILE
BROCKTON HEIGHTS NO. 7
BRUNSWICK AVENUE
FROM MONTICELLO AVE. TO 1320' N.E'LY.

HOR. SCALE 1"=40' VERT. SCALE 1"=4'

APPROVED BY:
[Signature]
FOR Director of Public Works

NO. **S-131**

DATE: 7 August 1958 SHEET 2 OF 2

"As Built" House Connections-10-27-58, H.Ball