

CONSTRUCTION LEGEND

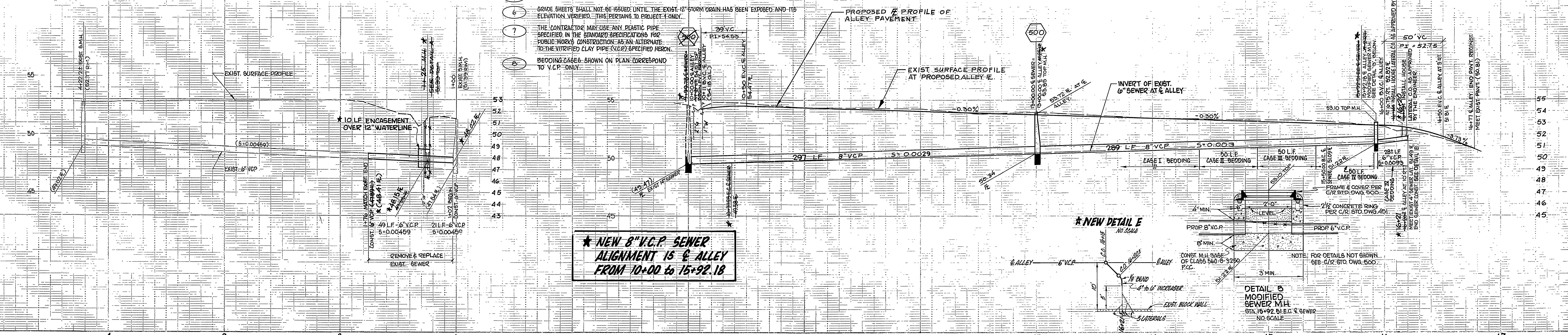
CENTERLINE LOT LINE
 RIGHT-OF-WAY LINE DIRECTION OF FLOW

SPECIAL CONSTRUCTION NOTES

NUMBERS ABOVE 100 IN A HEXAGON ON THE PLAN REFER TO THE RESPECTIVE STANDARD DRAWING AND SHALL BE CONSTRUCTED ACCORDINGLY, UNLESS MODIFICATIONS ARE NOTED ON THE PLAN OR IN THE NOTES BELOW. ANY NUMBER SHOWN BELOW THE STANDARD DRAWING NUMBER INDICATES THE SPECIFIC ALTERNATE TO BE CONSTRUCTED.
 REMOVE EXIST. A.C. PAVEMENT AND CONSTRUCT STRUCTURAL SECTION OF 2 1/2" A.C. OVER COMPACTED NATIVE SOIL.

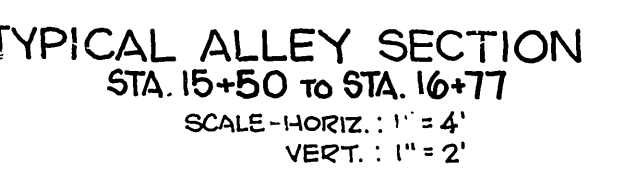
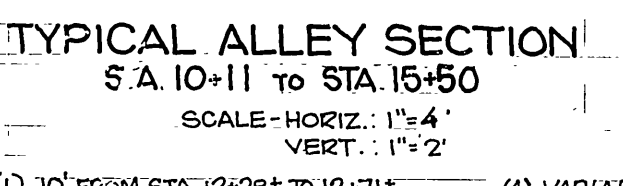
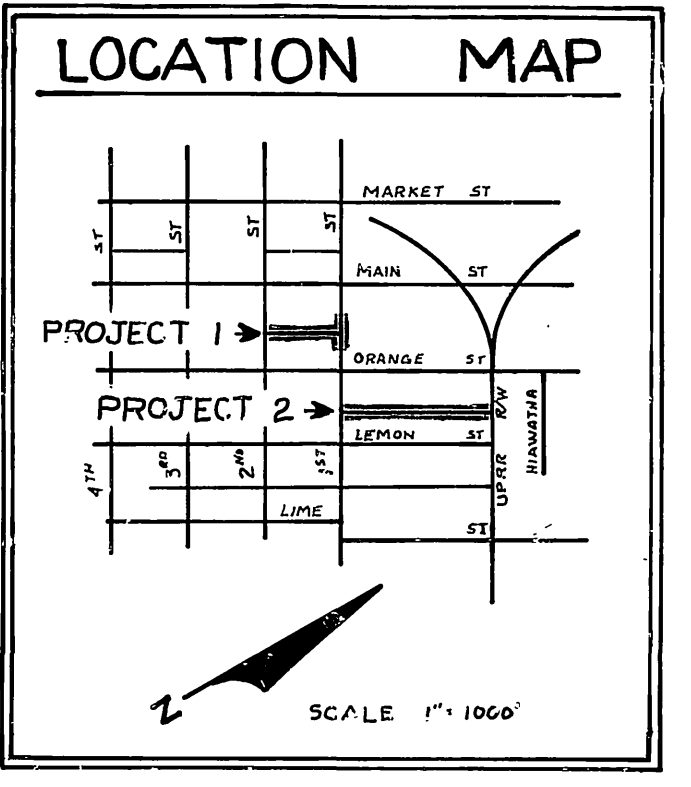
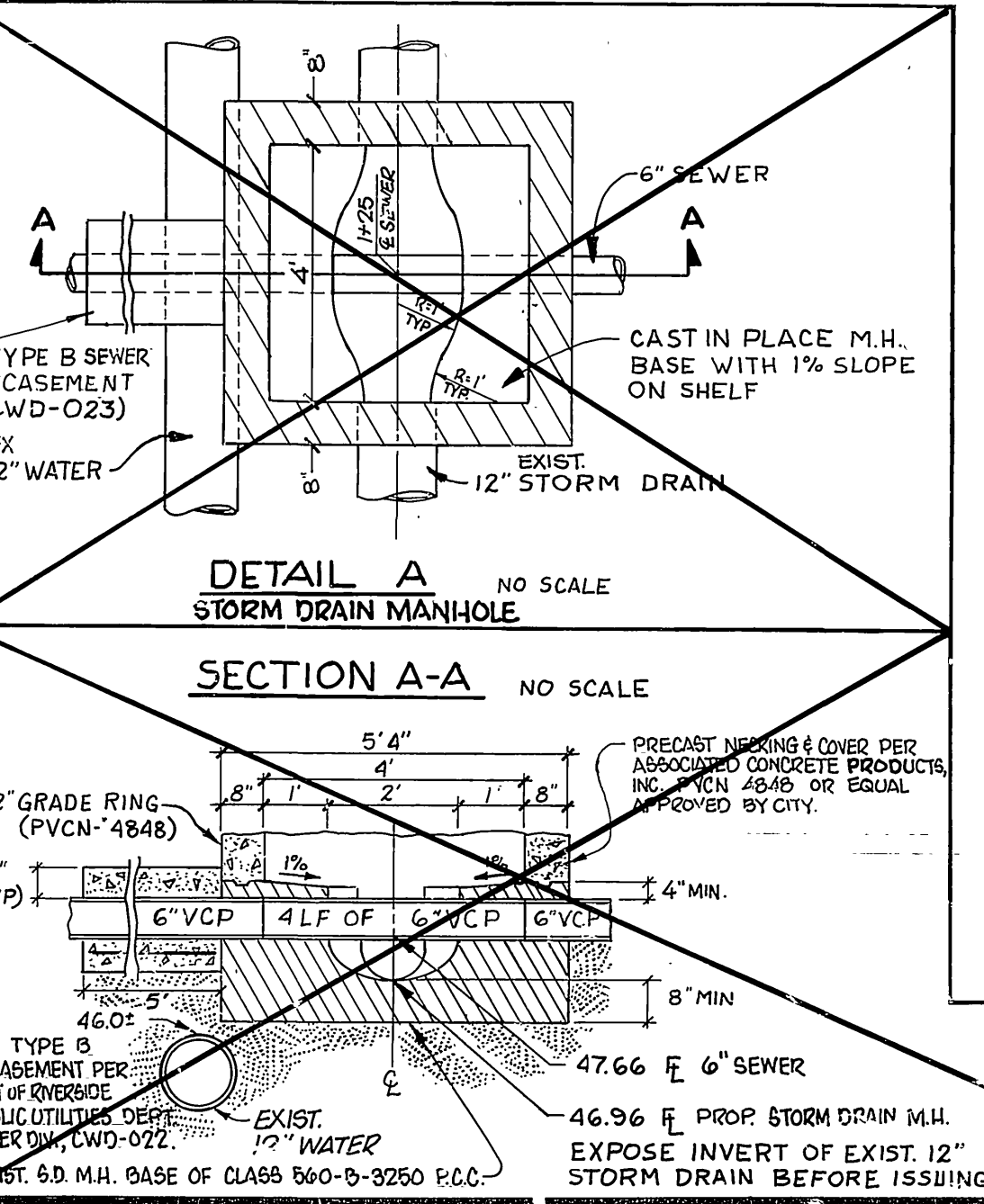
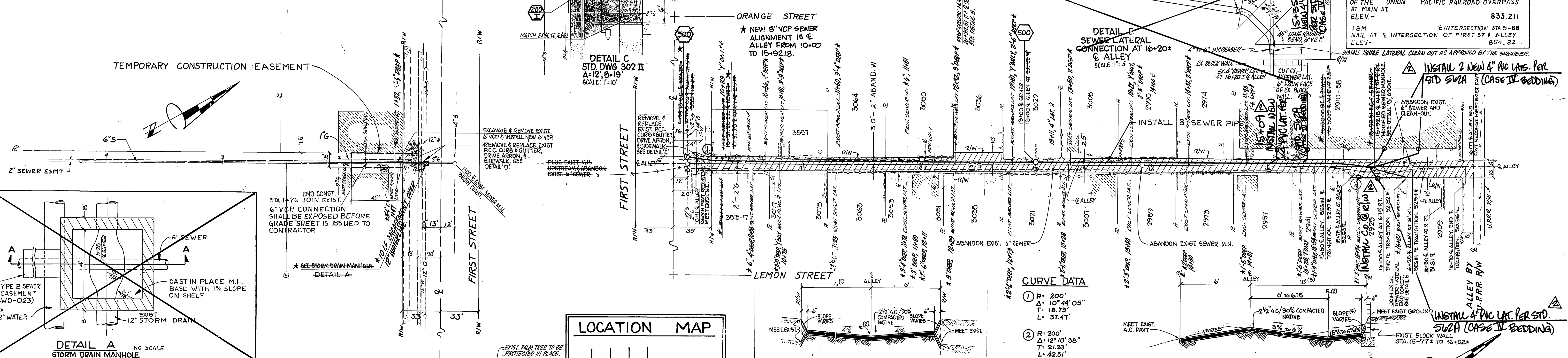
GENERAL CONSTRUCTION NOTES

- EXISTING UTILITIES SHOWN ON THIS PLAN ARE PLOTTED FROM UTILITY RECORDS. THE CONTRACTOR IS REQUIRED TO TAKE DUE PRECAUTIONARY MEASURES TO LOCATE AND PROTECT ALL UTILITIES WHETHER OR NOT SHOWN ON THIS PLAN. IF THE COVER OF A UTILITY IS KNOWN IT IS SHOWN IN THE PROFILE. UTILITIES SHOWN IN THE PROFILE AS "X" INDICATE THAT THE COVER IS UNKNOWN BUT THE UTILITY IS NOT EXPECTED TO CONFLICT WITH THE PROPOSED IMPROVEMENTS.
- ALL ELEVATIONS SHOWN ON THE PLAN SHALL BE STAKED IN THE FIELD.
- LOCATIONS OF SEWER LATERALS SHOWN ON THE PLAN ARE APPROXIMATE. SEWER LATERALS SHALL BE LOCATED IN THE FIELD BY THE CONTRACTOR AT THE TIME OF CONSTRUCTION.
- ALL SEWER LATERALS SHALL BE RECONNECTED TO THE PROPOSED SEWER LINE AS INSTALLATION PROGRESSES UPSTREAM.
- PROTECT EXIST. FENCES, WALLS, TREES, STREET LIGHTS, & POWER POLES. PROTECT AND JOIN EXIST. DRIVES AND WALKWAYS.
- GRADE SHEETS SHALL NOT BE ISSUED UNTIL THE EXIST. 12" STORM DRAIN HAS BEEN EXPOSED AND ITS ELEVATION VERIFIED. THIS PERTAINS TO PROJECT 1 ONLY.
- THE CONTRACTOR MAY USE ANY PLASTIC PIPE SPECIFIED IN THE STANDARD SPECIFICATIONS FOR PUBLIC WORKS CONSTRUCTION AS AN ALTERNATE TO THE VERIFIED CLAY PIPE (V.C.P.) SPECIFIED HEREON.
- BEDDING CASES SHOWN ON PLAN CORRESPOND TO V.C.P. ONLY.



PROJECT 1
 TBM INTERSECTION STA 9+88
 NAIL AT E INTERSECTION FIRST ST AND ALLEY IN PROJECT 2 THIS SHEET
 ELEV. 854.82

PROJECT 2
 BENCH MARK I7-F
 PK NAIL & TAG IN SOUTH END OF WEST ABUTMENT OF THE UNION PACIFIC RAILROAD OVERPASS AT MAIN ST.
 ELEV. 833.211
 TBM INTERSECTION STA 9+88
 NAIL AT E INTERSECTION FIRST ST & ALLEY
 ELEV. 854.82



CURVE DATA

1	R= 200'	Δ= 10° 44' 05"	T= 18.75'	L= 37.47'
2	R= 200'	Δ= 12° 10' 36"	T= 21.93'	L= 42.51'

- 10' FROM STA 12+28 TO 12+11.
- SEE PLAN FOR E. TRANSITION.
- 6' FROM STA 15+50 TO STA 15+10.
- VARIABLE SLOPE FOR SECTIONS WITHOUT EXIST. BLOCK WALL.
- FOR SECTIONS WITH EXIST. BLOCK WALL - STRAIGHT GRADE TO FACE OF WALL TO MATCH EXIST. PAVEMENT PROFILE AT BASE OF WALL. CONTRACTOR TO RECORD EXIST. PAVT PROFILE AT BASE OF WALL PRIOR TO CLEARING AND GRADING FOR PROPOSED PAVT RECONSTRUCTION.

CITY OF RIVERSIDE PUBLIC WORKS DEPARTMENT		ALLEY SEWER REPLACEMENT		INDEX WP ACCOUNT NO. 92-577-564
PROJECT 1: FROM FIRST ST TO SECOND ST BETWEEN MAIN ST & ORANGE ST		PROJECT 2: FROM FIRST ST TO UPPER R/W BETWEEN ORANGE ST & LEMON ST		S-1310 SHEET 1 OF 1
DESIGNED BY: <i>SJM</i> DRAWN BY: <i>RLB</i> CHECKED BY: <i>CLS</i>	APPROVED BY: <i>[Signature]</i> DATE: <i>9/22/83</i>	APPROVED BY: <i>[Signature]</i> DATE: <i>9/22/83</i>	HORIZ. SCALE: 1" = 40' VERT. SCALE: 1" = 4'	