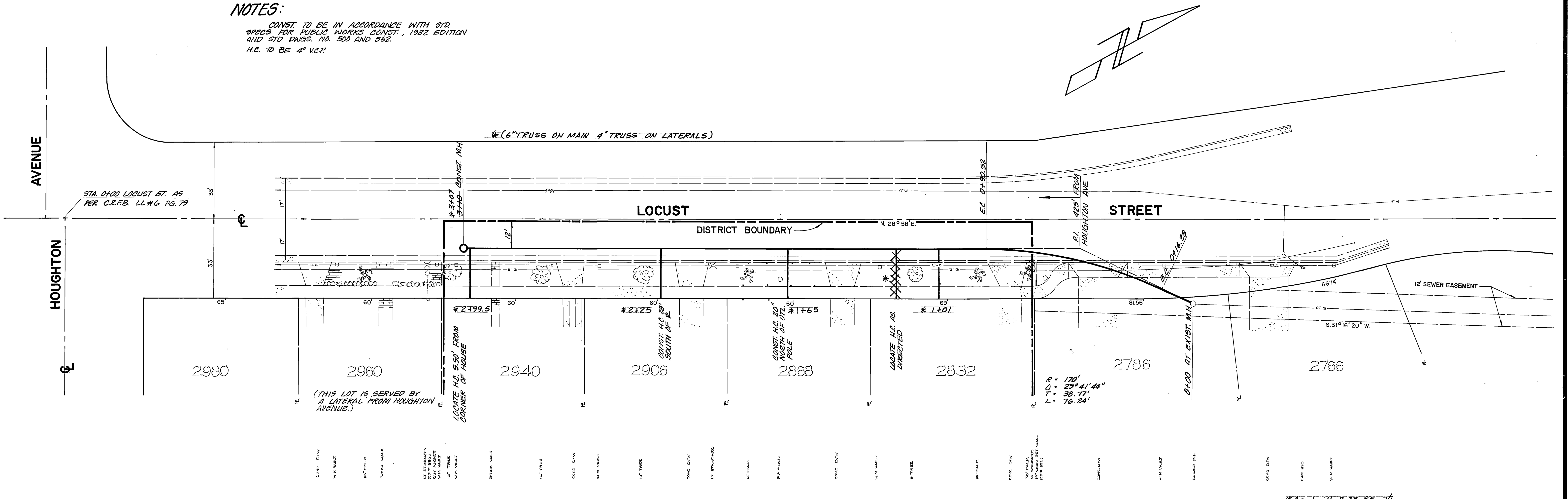


NOTES:
 CONST. TO BE IN ACCORDANCE WITH STD. SPECS. FOR PUBLIC WORKS CONST., 1982 EDITION AND STD. DWGS. NO. 500 AND 562.
 H.C. TO BE 4" V.C.P.



- CONC. DIV.
- V.P. MARK
- 10" PAVER
- BRICK WALL
- 12" STANDARD GUY ANCHOR WITH WALK
- 12" TREE
- BRICK WALK
- 10" TREE
- CONC. DIV.
- V.P. MARK
- 10" TREE
- CONC. DIV.
- 12" STANDARD
- 10" PAVER
- V.P. MARK
- CONC. DIV.
- V.P. MARK
- 10" TREE
- CONC. DIV.
- 12" STANDARD
- 10" PAVER
- V.P. MARK
- CONC. DIV.
- V.P. MARK
- 10" TREE
- CONC. DIV.
- 12" STANDARD
- 10" PAVER
- V.P. MARK
- CONC. DIV.
- V.P. MARK
- 10" TREE
- CONC. DIV.
- 12" STANDARD
- 10" PAVER
- V.P. MARK

CITY OF RIVERSIDE		INDEX OF
PUBLIC WORKS DEPARTMENT		ACCOUNT NO. 84-451-659
APPROVED BY PRINCIPAL ENGINEER PARK DEPARTMENT TRAFFIC DIVISION CHIEF P.W. ENGINEER	DATE 5/11/83 5/11	LOCUST STREET ASSESSMENT DISTRICT (SEWER) NORTHERLY OF HOUGHTON AVE. SHEET S-1316 OF 1 HORIZ. SCALE: 1" = 20' VERT. SCALE: 1" = 4' <small>C.R.F.B. L.L.#6 PG. 79-82</small>
DESIGNED BY: <i>[Signature]</i> DRAWN BY: <i>[Signature]</i> CHECKED BY: <i>[Signature]</i>		DATE: 5/11/83