

- GENERAL NOTES**
- IT SHALL BE THE RESPONSIBILITY OF THE CONTRACTOR TO CLEAR THE RIGHT OF WAY IN ACCORDANCE WITH THE PROVISIONS OF LAW AS IT AFFECTS EACH UTILITY INCLUDING IRRIGATION LINES AND APPURTENANCES AND AT NO COST TO THE CITY.
 - CONSTRUCTION SHALL BE IN ACCORDANCE WITH THE CITY OF RIVERSIDE, DEPARTMENT OF PUBLIC WORKS, STANDARD DRAWINGS, AND THE STANDARD SPECIFICATIONS FOR PUBLIC WORKS CONSTRUCTION, 1975 EDITION.
 - LOCATION OF LATERALS TO BE DETERMINED IN THE FIELD AT THE DIRECTION OF THE OWNER. AVOID CONFLICT WITH PROPOSED AND/OR EXISTING FACILITIES.
 - CONTRACTOR IS TO VERIFY EXISTING SEWER ELEVATION PRIOR TO CONSTRUCTION.
 - QUANTITIES SHOWN ARE FOR INFORMATION ONLY AND THE CITY OF RIVERSIDE IS NOT RESPONSIBLE FOR THEIR ACCURACY.
 - THE SEWER CONTRACTOR SHALL ADJUST MANHOLES TO FINAL GRADE AFTER PAVING IS COMPLETED.
 - A PLUG SHALL BE INSTALLED AND REMAIN IN PLACE WHERE THE NEW SEWER CONNECTS WITH THE EXISTING SEWER UNTIL THE NEW SEWER IS ACCEPTED BY THE CITY.
 - PIPE SHALL BE BEDDED PER CASE 1, STANDARD DRAWING NO. 452, UNLESS OTHERWISE SPECIFIED ON THE PLANS.
 - ALL STUBS AND LATERALS TO BE CONSTRUCTED IN ACCORDANCE WITH STANDARD DRAWING NO. 562. STUBS SHALL BE PLUG AND CAPPED.
 - LATERALS ARE TO BE 4" V.C.P. EXTENDED TO PROPERTY LINE.

ENGINEER'S NOTE TO CONTRACTOR:

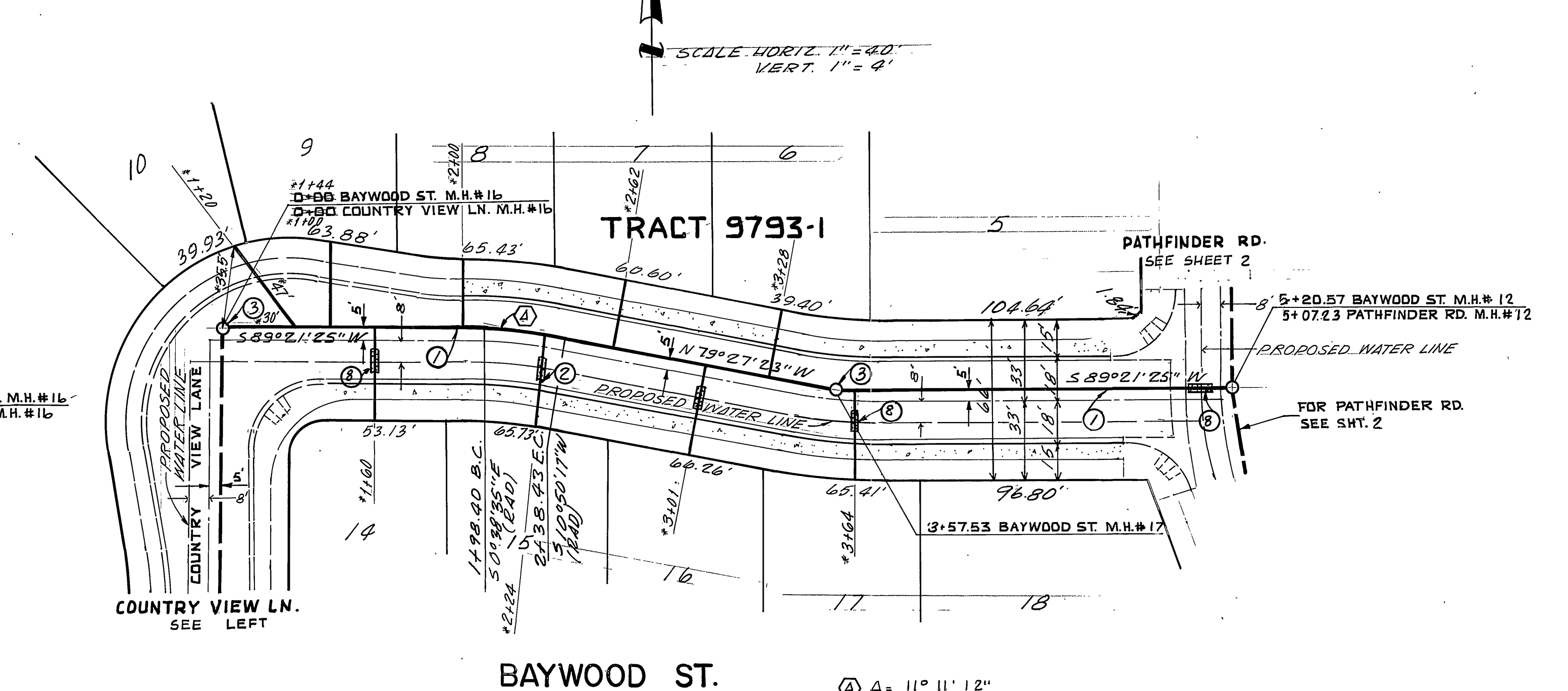
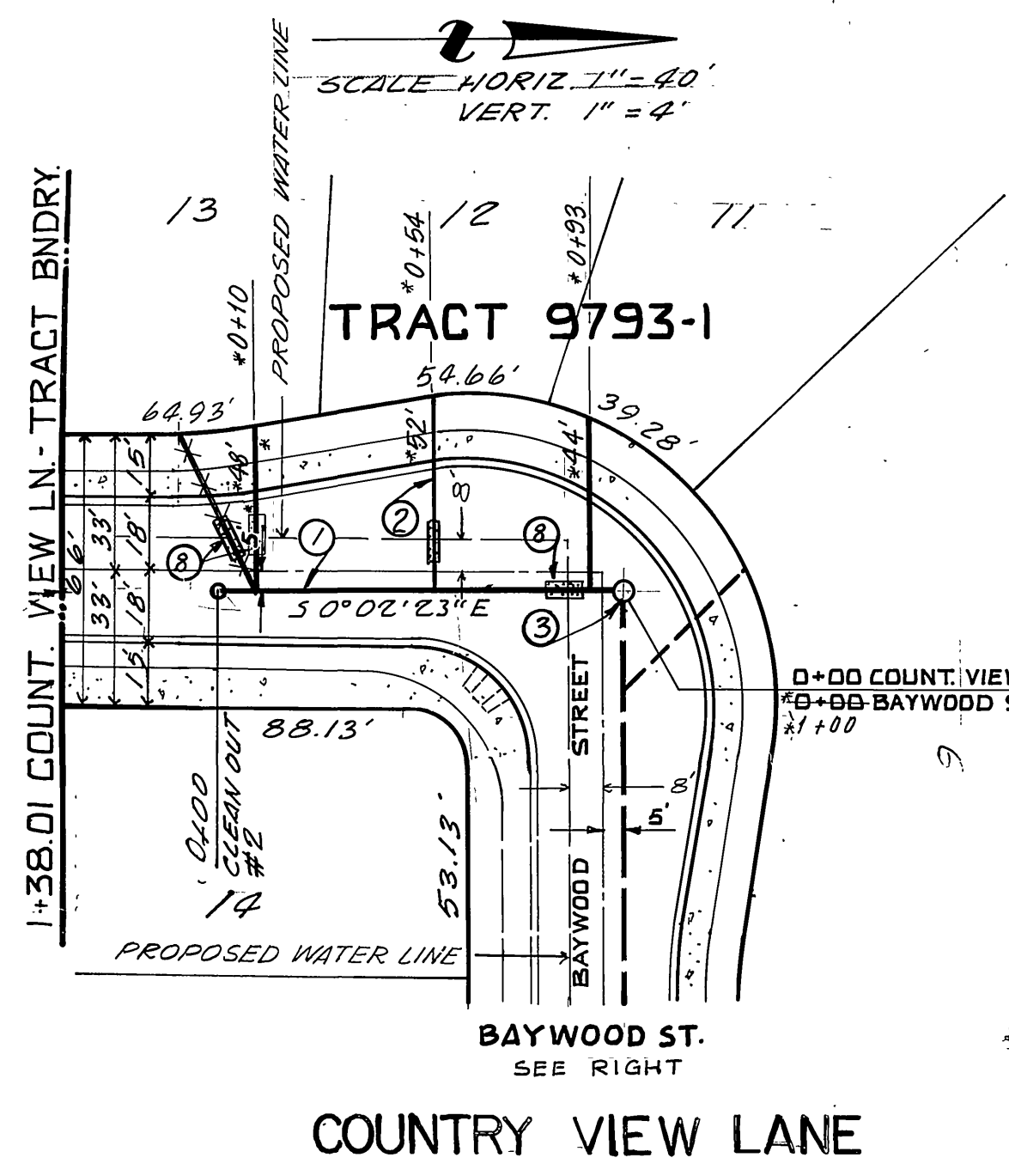
THE EXISTENCE AND LOCATION OF ANY UNDERGROUND UTILITIES, PIPES, AND/OR STRUCTURES SHOWN ON THESE PLANS WERE OBTAINED BY A SEARCH OF AVAILABLE RECORDS. TO THE BEST OF OUR KNOWLEDGE, THERE ARE NO EXISTING UTILITIES EXCEPT AS SHOWN ON THESE PLANS. THE CONTRACTOR SHALL ASCERTAIN THE TRUE LOCATION OF ANY UNDERGROUND UTILITIES AND SHALL BE RESPONSIBLE FOR DAMAGE TO ANY PUBLIC OR PRIVATE UTILITIES, SHOWN OR NOT SHOWN HEREON.

CONSTRUCTION NOTES AND QUANTITY ESTIMATE

NO	DESCRIPTION	QUANTITY
1	CONSTRUCT 8" V.C.P. SEWER	4183 L.F.
2	CONSTRUCT 4" V.C.P. SEWER LATERAL PER STD. 562	1128 L.F.
3	CONSTRUCT SEWER MANHOLE PER STD. 500	16 EA.
4	CONSTRUCT SEWER CLEANOUT PER STD. 560	4 EA.
5	CONSTRUCT PLUG	1 EA.
6	EXIST. GUY POLE & WIRES TO BE REMOVED & REPLACED PER CITY REQUIREMENTS	2 EA.
7	REMOVE & REPLACE EXIST IMPROVEMENTS AS NECESSARY PER CITY REQUIREMENTS	1 EA.
8	CONC. ENCASE SEWERLINE PER. CWD-022	180 L.F.

SPECIAL NOTE

"The private engineer signing these plans is responsible for assuring the accuracy and acceptability of the work hereon. In the event of discrepancies arising during construction as a result of errors or omissions, the private engineer shall be responsible for determining an acceptable solution and revising the plans for approval by the City."



REVISION #1
 PREPARED UNDER THE SUPERVISION OF:
 RAAB ENGINEERING, INC.
 1900 NICE DR # 207
 CORONA, CA 91720
 (909) 270-5628
 MARK L. RAAB PCE 29616 DATE 1/24/83

BENCH MARK: # H-1144, 602-7-69
 UNION PACIFIC, R.R. 60' N.W. OF CENTER OF CROSSING OF JURUPA AVE. IN TOP OF N.W. END OF N.E. CONCRETE HEADWALL OF 18" PIPE CULVERT (53.00); 64' N.W. OF A SIGNAL; 9.5' N.E. OF THE N.E. RAIL, AND ABOUT 25' LOWER THAN TRACK.
 ELEVATION = 777.827 (1970)

TAIT AND ASSOCIATES
 CIVIL ENGINEERS - SURVEYORS - PLANNERS
 900 ORANGEFAIR LANE, ANAHEIM, CALIFORNIA
 (714) 870-1253
 APPROVED BY: Bruce P. Blank DATE: 1/24/83
 R.E. No. 2492

APPROVED BY: [Signature] DATE: 1/24/83
 PRINCIPAL ENGINEER
 PARK DEPARTMENT
 TRAFFIC DIVISION
 CHIEF P. W. ENGR. DATE: 1/24/83

CITY OF RIVERSIDE, CALIFORNIA
 DEPARTMENT OF PUBLIC WORKS

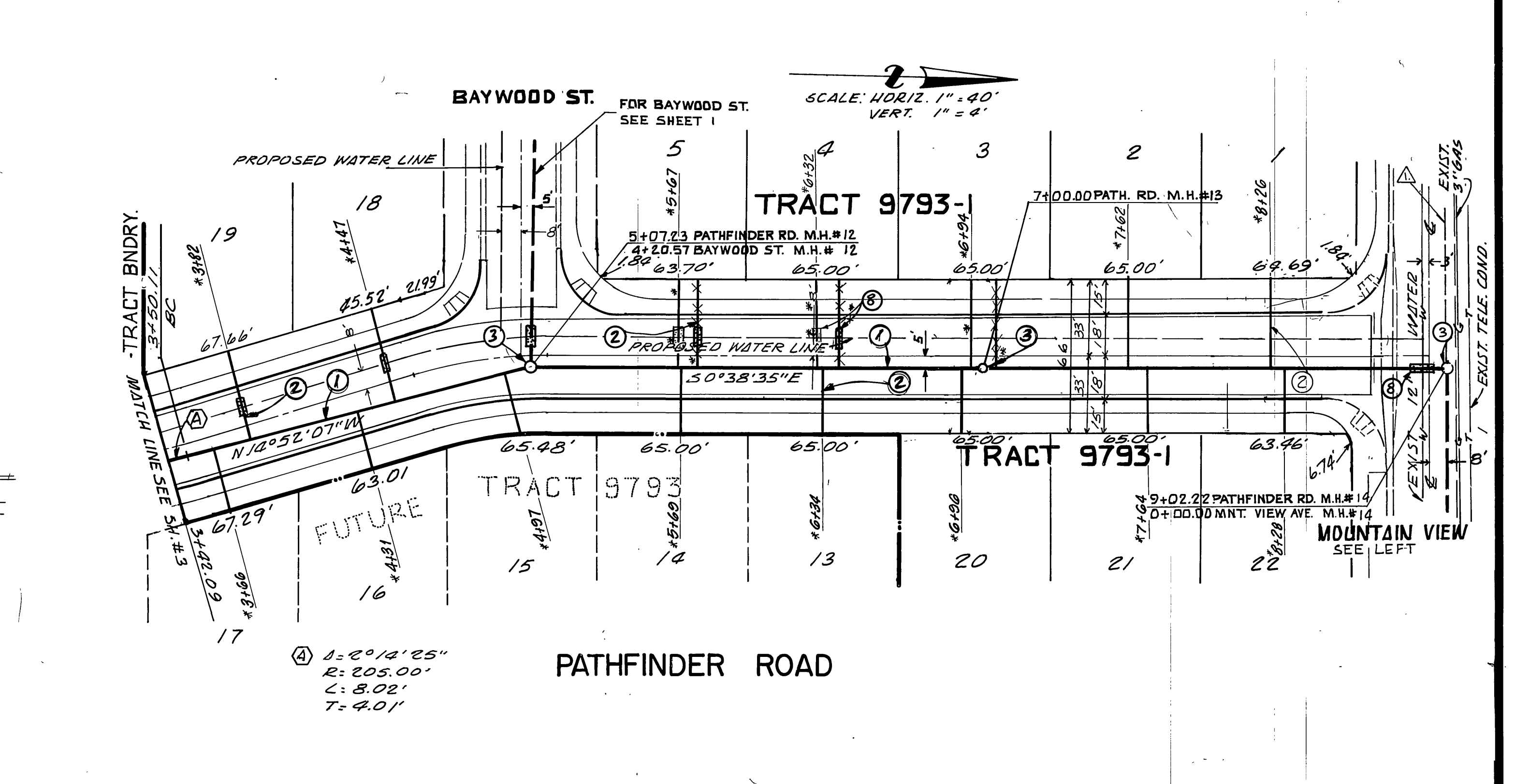
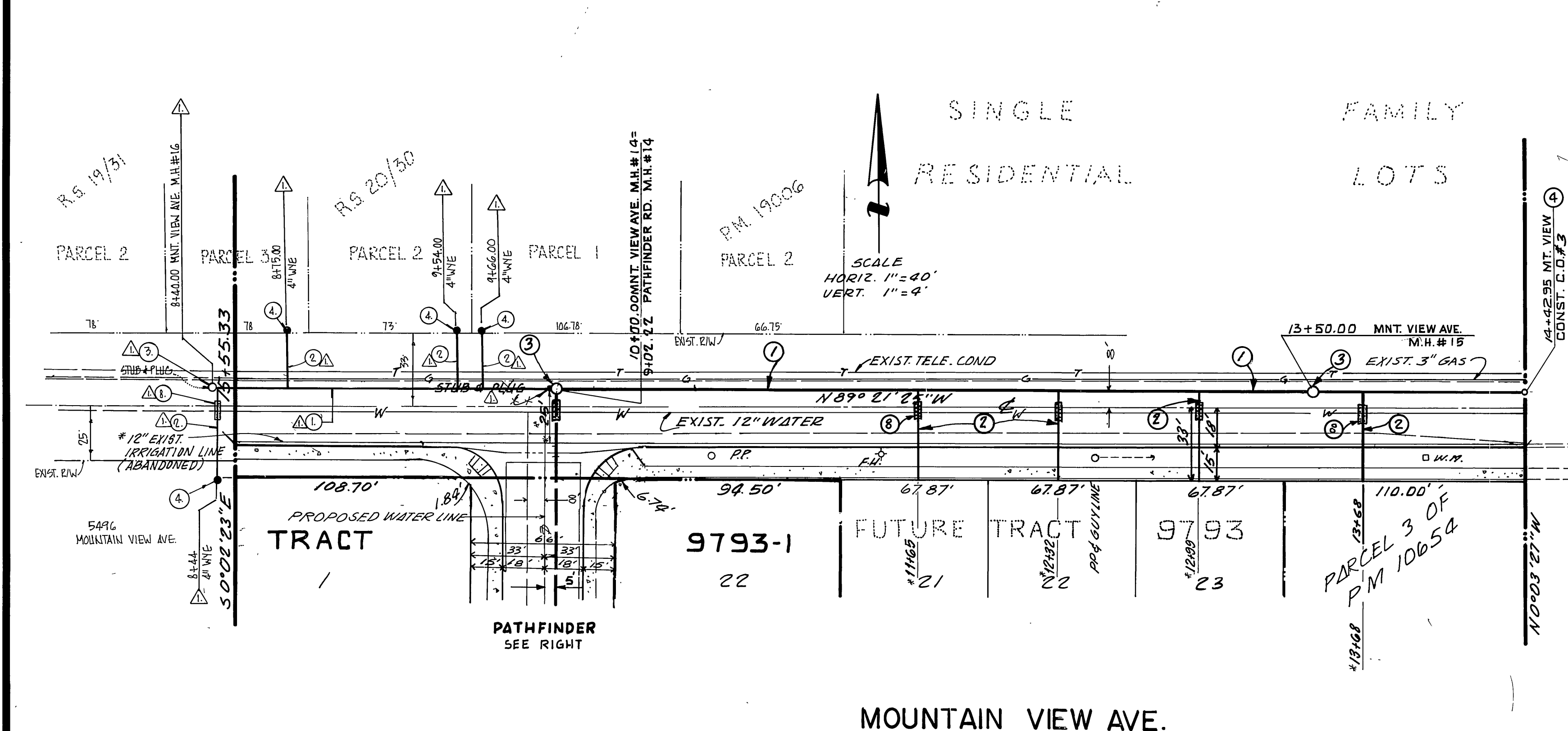
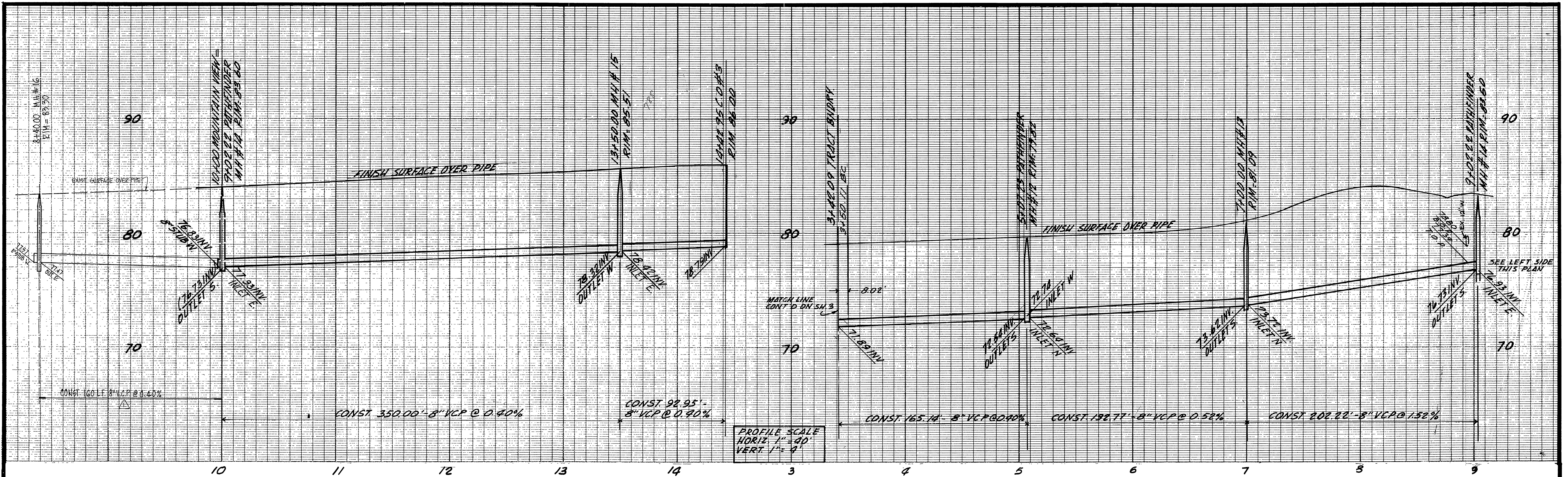
SEWER IMPROVEMENTS FOR TRACT 9793-1
 COUNTRY VIEW LANE/BAYWOOD STREET

INDEX W/ PROJECT NO. S-1322
 SHEET 1 OF 6
 FILE NO.

APPROVED BY WATER DEPT.
 DATE: 1-27-84

*AS BUILT Shop. Aug. 14, 1984

HORIZ. SCALE: 1" = 40' VERT. SCALE: 1" = 4'



CONSTRUCTION NOTES

- ① CONST. 8" V.C.P. SEWER
- ② CONST. 4" V.C.P. SEWER LATERAL PER STD. 562
- ③ CONST. SEWER MANHOLE PER STD. 500
- ④ CONST. SEWER CLEAN OUT PER STD. 560
- ⑤ CONCRETE ENCASE SEWER MAIN PER CWO-022.



REVISION NO. 1
 PREPARED UNDER THE SUPERVISION OF:
 RAAB ENGINEERING, INC.
 1900 NICE DR. # 107
 CORONA, CA 91720
 (409) 270-9628

Mark L. Raab
 MARK L. RAAB DEC 22 1984 DATE

TAIT AND ASSOCIATES

CIVIL ENGINEERS - SURVEYORS - PLANNERS
 900 ORANGEFAIR LANE, ANAHEIM, CALIFORNIA
 (714) 870-1253 (213) 860-6595

APPROVED BY *Bruce C. Tait* DATE 4/4/85
 R.E. No. 26492

APPROVED BY WATER DEPT.
R.S. Durbak 3/5/79
 DATE

Da I Park 1-27-84
 DATE

BENCH MARK: # 4-1144, 602-7-69
 UNION PACIFIC R.R. 60' N.W. OF CENTER OF CROSSING
 OF SURUPA AVE. IN TOP OF N.W. END OF N.E. CONCRETE
 HEADWALL OF 18" PIPE CULVERT (53.00); 64' N.W.
 OF A SIGNAL; 95' N.E. OF THE N.E. RAIL, AND ABOUT
 2.5' LOWER THAN TRACK.

ELEVATION = 777.827 (1970)

**CITY OF RIVERSIDE, CALIFORNIA
 DEPARTMENT OF PUBLIC WORKS**

APPROVED BY *R.C. Walsh* DATE 3/24/84
 DIRECTOR OF PUBLIC WORKS

APPROVED BY *R.S. Durbak* DATE 3/5/79
 CHIEF P.W. ENGR.

**SEWER IMPROVEMENTS FOR
 TRACT 9793-1**

MOUNTAIN VIEW AVE./PATHFINDER RD.

HORIZ. SCALE: 1" = 40'
 VERT. SCALE: 1" = 4'

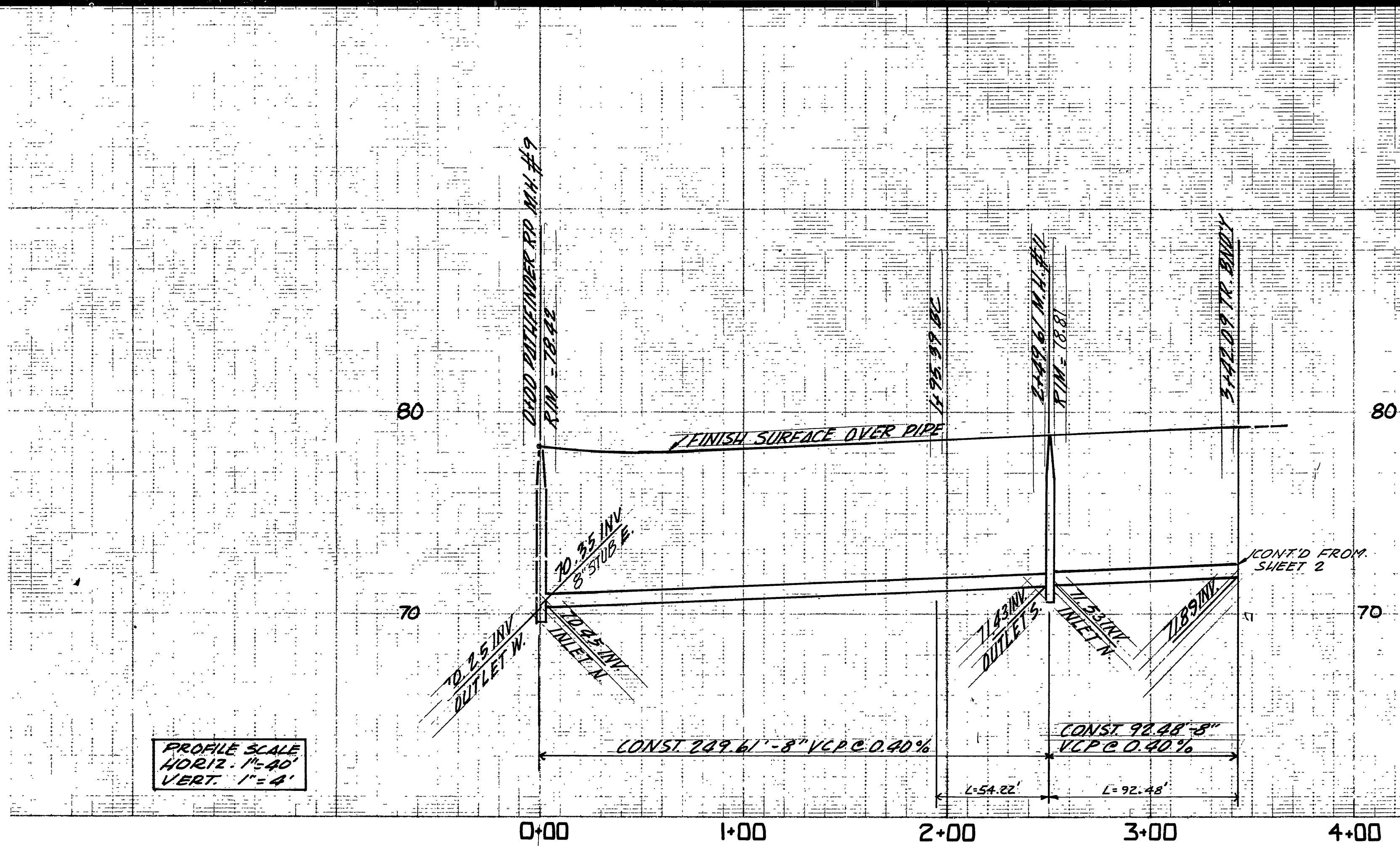
PROJECT NO.
S-1322

SHEET 2 OF 6

FILE NO.

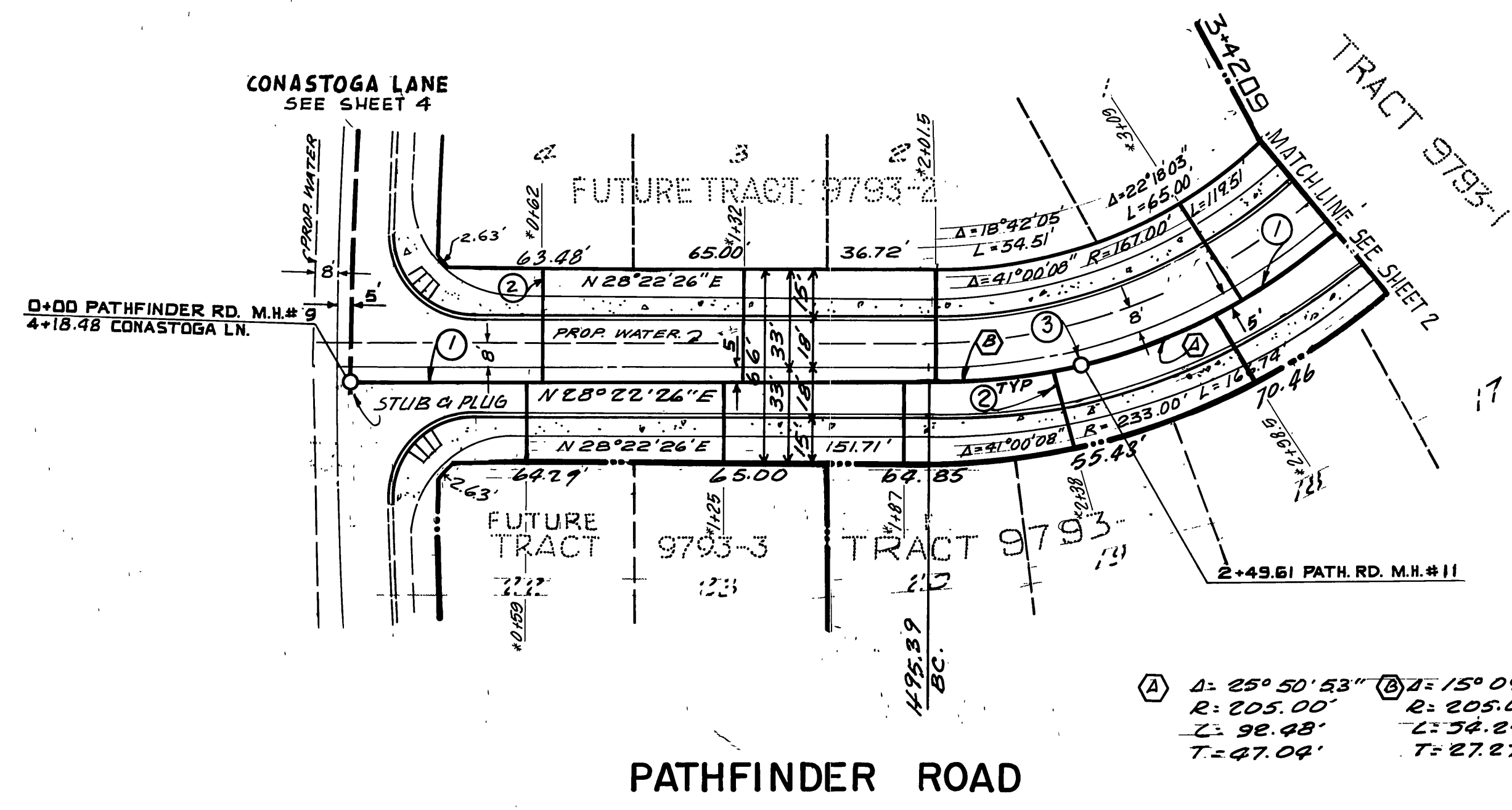
*AS BUILT Shop. Aug. 15, 1984

INDEX UP



PROFILE SCALE
HORIZ. 1"=40'
VERT. 1"=4'

SCALE HORIZ. 1"=40'
VERT. 1"=4'



- CONSTRUCTION NOTES**
- ① CONST. 8" VCP SEWER
 - ③ CONST. SEWER MANHOLE PER STD. 500
 - ② CONST. SEWER LATERAL PER STD. 562

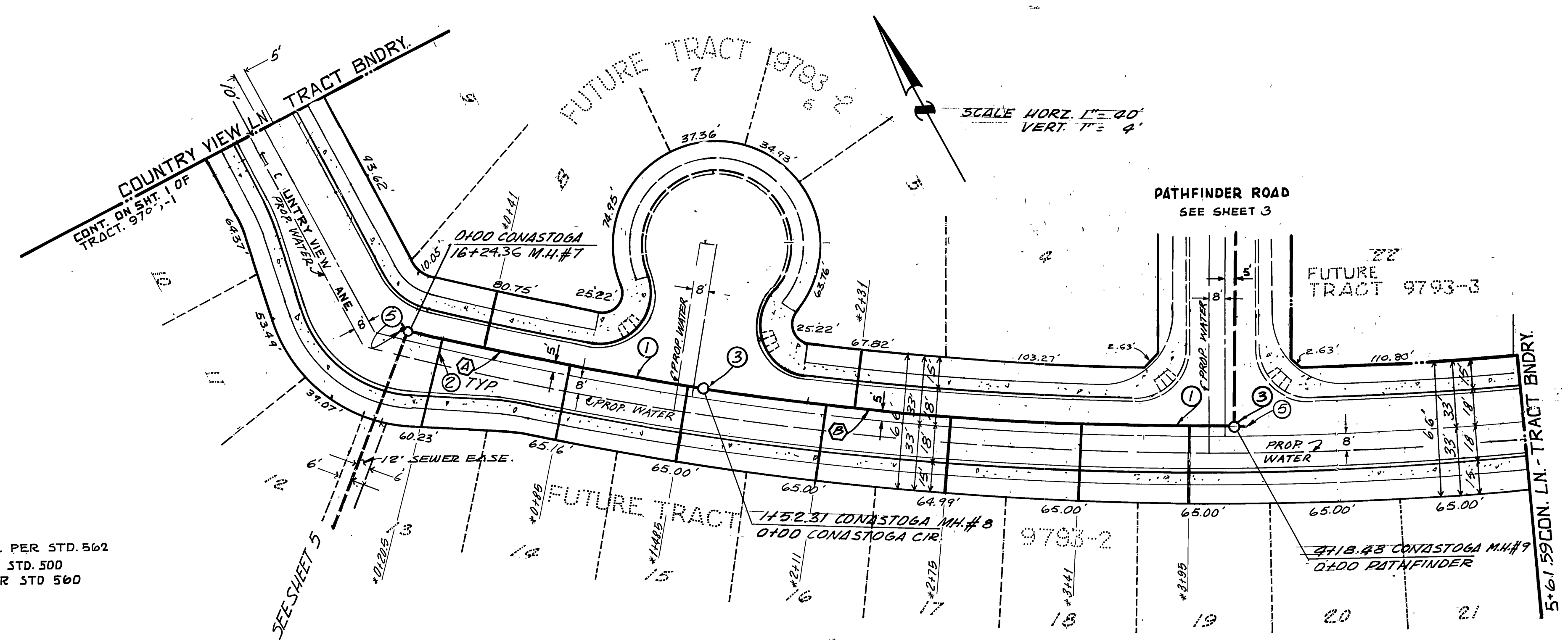
① Δ=25°50'53" R=205.00' L=54.22'
② Δ=15°09'15" R=305.00' L=74.22'
③ Δ=92°48' L=92.48'
④ Δ=47°04' L=47.04'

<p>APPROVED BY WATER DEPT.</p> <p><i>Don L. Paulk</i> 1-27-84 DATE</p>	<p>BENCH MARK: # 4-1144-602-7-69 UNION PACIFIC R.R. 60' N.W. OF CENTER OF CROSSING OF JURUPA AVE. IN TOP OF N.W. END OF N.E. CONCRETE HEADWALL OF 18" PIPE CULVERT (53.00); 64' N.W. OF A SIGNAL; 9.5' N.E. OF THE N.E. RAIL. AND ABOUT 2.5' LOWER THAN TRACK. ELEVATION = 777.827 (1970)</p>	<p>TAIT AND ASSOCIATES CIVIL ENGINEERS - SURVEYORS - PLANNERS 900 ORANGEFAIR LANE, ANAHEIM, CALIFORNIA (714) 870-1253 (213) 860-6595 APPROVED BY <i>Don C. Tait</i> DATE 6/2/83 R.E. No. 2442</p>	<p>CITY OF RIVERSIDE, CALIFORNIA DEPARTMENT OF PUBLIC WORKS</p> <table border="1" style="width: 100%; border-collapse: collapse;"> <tr> <td>APPROVED BY</td> <td>BY</td> <td>DATE</td> </tr> <tr> <td>PRINCIPAL ENGINEER</td> <td><i>[Signature]</i></td> <td>2-24-84</td> </tr> <tr> <td>TRAFFIC DIVISION</td> <td></td> <td></td> </tr> <tr> <td>CHIEF P. W. ENGR.</td> <td><i>[Signature]</i></td> <td>2-24-84</td> </tr> </table>	APPROVED BY	BY	DATE	PRINCIPAL ENGINEER	<i>[Signature]</i>	2-24-84	TRAFFIC DIVISION			CHIEF P. W. ENGR.	<i>[Signature]</i>	2-24-84	<p>SEWER IMPROVEMENTS FOR TRACT 9793-1 PATHFINDER ROAD</p> <p>HORIZ. SCALE: 1" = 40' VERT. SCALE: 1" = 4'</p>	<p>INDEX WP</p> <p>PROJECT NO. S-1322</p> <p>SHEET 3 OF 6</p> <p>FILE NO.</p>
APPROVED BY	BY	DATE															
PRINCIPAL ENGINEER	<i>[Signature]</i>	2-24-84															
TRAFFIC DIVISION																	
CHIEF P. W. ENGR.	<i>[Signature]</i>	2-24-84															

80
70

1+00 0+00 1+00 2+00 3+00 4+00 5+00 6+00

PROFILE SCALE
HORIZ. 1" = 40'
VERT. 1" = 4'



CONSTRUCTION NOTES

- ① CONST. 8" V.C.P. SEWER
- ② CONST. 4" VCP SEWER LATERAL PER STD. 562
- ③ CONST. SEWER MANHOLE PER STD. 500
- ④ CONST. SEWER CLEANOUT PER STD 560
- ⑤ CONST. STUB & PLUG

SEWER CURVE DATA

Δ	R	L	T
5° 06' 54"	1706.08'	192.31'	76.20'
8° 56' 20"	1706.08'	200.17'	133.36'

CONASTOGA LANE

APPROVED BY WATER DEPT.
D. L. Pank 1-27-84
DATE

BENCH MARK: # 4-1144-602-7-69
UNION PACIFIC R.R. 60' N.W. OF CENTER OF CROSSING OF JURUPA AVE. IN TOP OF N.W. END OF N.E. CONCRETE HEADWALL OF 18" PIPE CULVERT (53.00) 64' N.W. OF A SIGNAL; 9.5' N.E. OF THE N.E. RAIL, AND ABOUT 2.5' LOWER THAN TRACK.
ELEVATION = 777.827 (1970)

TAIT AND ASSOCIATES
CIVIL ENGINEERS - SURVEYORS - PLANNERS
900 ORANGEFAIR LANE, ANAHEIM, CALIFORNIA
(714) 870-1253 (213) 860-6595
APPROVED BY *Bruce E. Tait* DATE 2/21/84
R.E. No. 26492

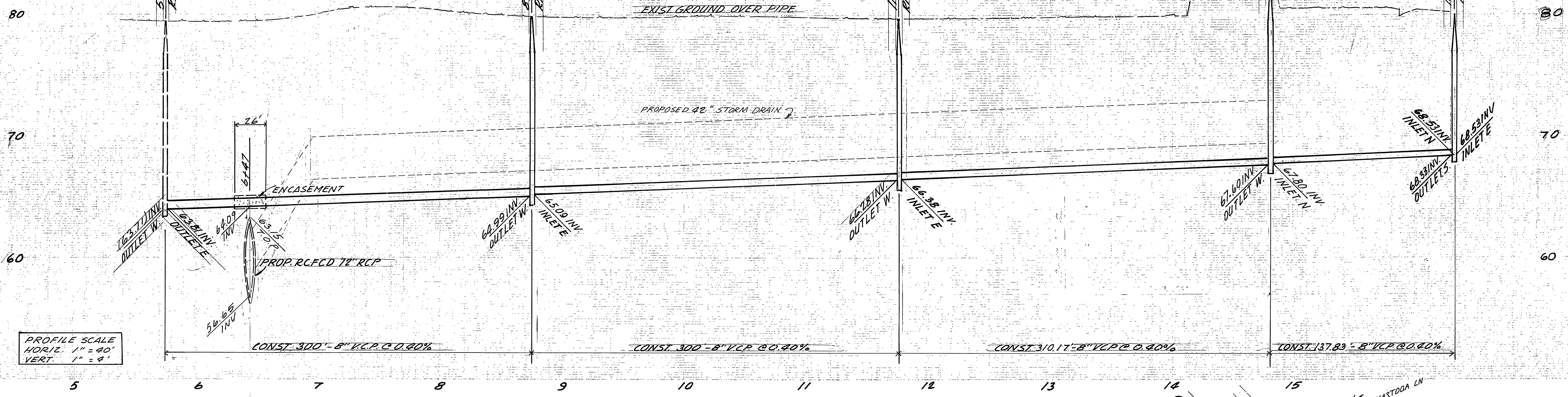
MARK REVISIONS APPR. DATE
DESIGNED BY *C.S.* DRAWN BY *H.S.* CHECKED BY *[Signature]*

CITY OF RIVERSIDE, CALIFORNIA
DEPARTMENT OF PUBLIC WORKS
APPROVED BY *[Signature]* BY DATE
PRINCIPAL ENGINEER
TRAFFIC DIVISION
CHIEF P. W. ENGR. DATE 2/21/84

SEWER IMPROVEMENTS FOR
TRACT 9793-1
CONASTOGA LANE
HORIZ. SCALE: 1" = 40' VERT. SCALE: 1" = 4'

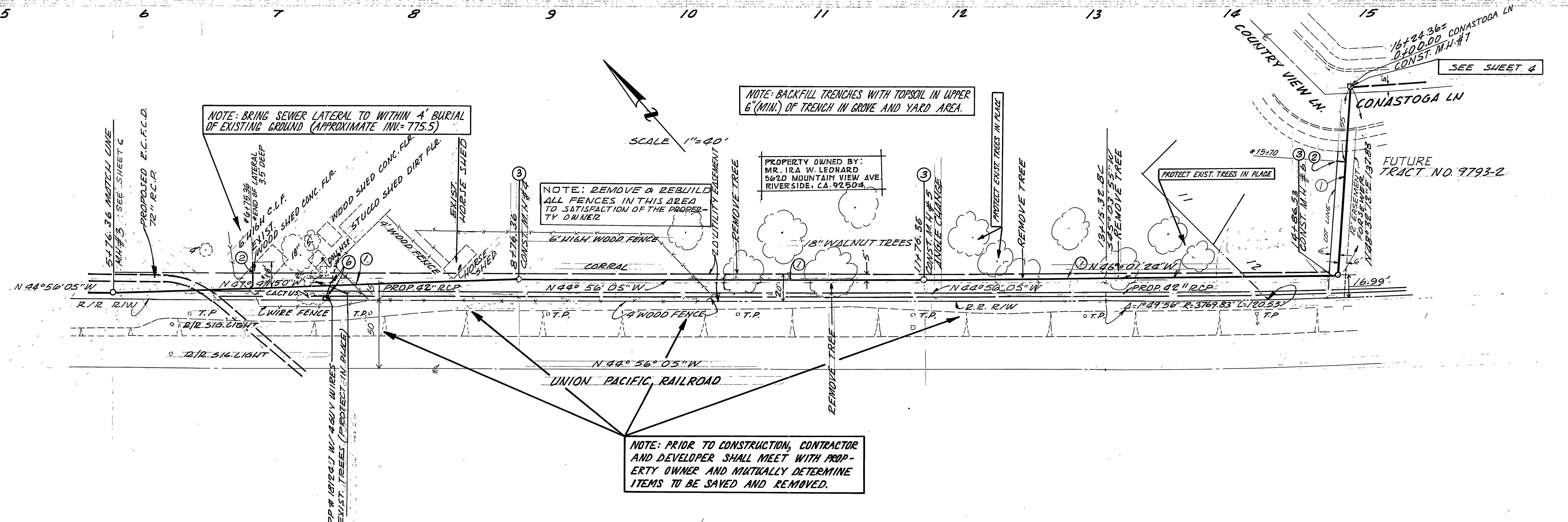
INDEX W/P
PROJECT NO. S-1322
SHEET 9 OF 6
FILE NO.

* AS BUILT 8/29/84



PROFILE SCALE
 HORIZ. 1" = 40'
 VERT. 1" = 4'

5 6 7 8 9 10 11 12 13 14 15



NOTE: BACKFILL TRENCHES WITH TOPSOIL IN UPPER 6" (MIN.) OF TRENCH IN GROVE AND YARD AREA.

NOTE: REMOVE & REBUILD ALL FENCES IN THIS AREA TO SATISFACTION OF THE PROPERTY OWNER.

NOTE: PRIOR TO CONSTRUCTION, CONTRACTOR AND DEVELOPER SHALL MEET WITH PROPERTY OWNER AND MUTUALLY DETERMINE ITEMS TO BE SAVED AND REMOVED.

APPROVED BY WATER DEPT. <i>Don L. Parks</i> 1-27-84 DATE	APPROVED BY ELECTRIC DEPT. <i>W.W. Fittner</i> 1-27-84 DATE
--	---

- CONSTRUCTION NOTES:**
- CONSTRUCT 8" V.C.P. SEWER
 - CONSTRUCT SEWER M.H. PER STD. PLAN 500
 - CONSTRUCT SEWER LAT. STUB PER STD. PLAN 562
 - EXIST. GUY DOLE & WIRES TO BE REMOVED AND REPLACED PER CITY REQUIREMENTS
 - CONST. 4" V.C.P. SEWER LATERAL PER STD. PLAN 562

BENCH MARK #4-1144, 602-7-69
 UNION PACIFIC R.R. 60' N.N.W. OF CENTER OF CROSSING OF JURUPA AVE. IN TOP OF N.W. END OF N.E. CONCRETE HEADWALL OF 18" PIPE CULVERT (53.00); 64' N.W. OF A SIGNAL; 9.5' N.E. OF THE N.E. RAIL; AND ABOUT 2.5' LOWER THAN TRACK ELEV. = 777.827 (1970)

TAIT AND ASSOCIATES
 CIVIL ENGINEERS - SURVEYORS - PLANNERS
 900 ORANGEFAIR LANE, ANAHEIM, CALIFORNIA
 (714) 870-1253 (213) 860-6595
 APPROVED BY *Bruce C. Blank* DATE 4/24/83
 R.E. No. 24492

MARK	REVISIONS	APPR. DATE
DESIGNED BY <i>R.S.</i>	DRAWN BY <i>H.S.</i>	CHECKED BY <i>H.S.</i>

CITY OF RIVERSIDE, CALIFORNIA
 DEPARTMENT OF PUBLIC WORKS

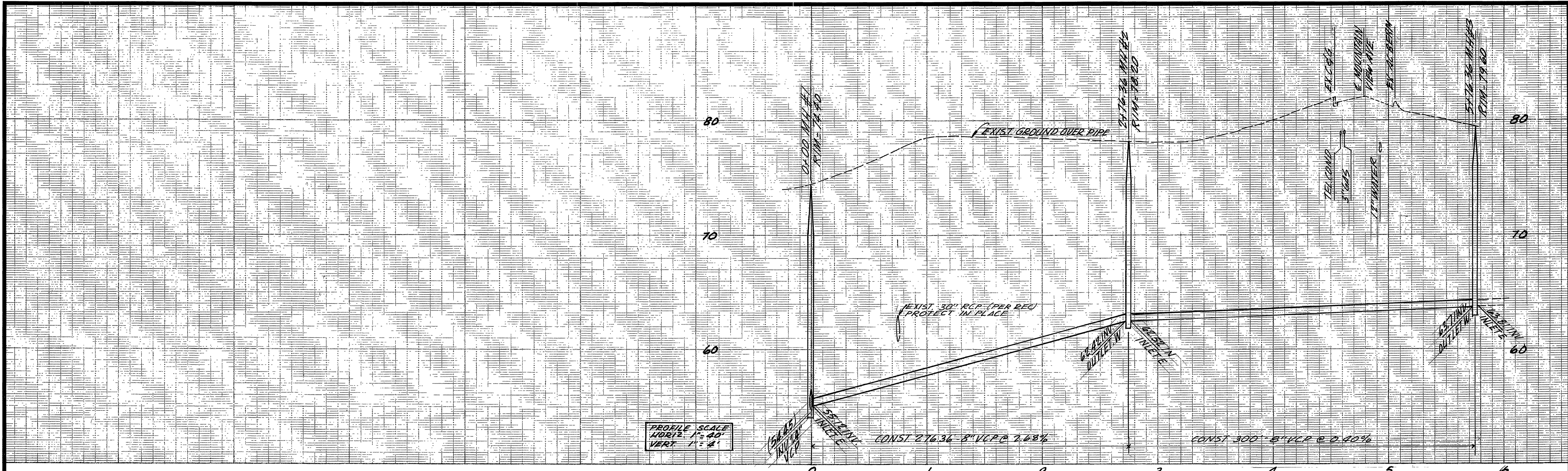
APPROVED BY	BY	DATE
<i>[Signature]</i>	<i>[Signature]</i>	2/24/84
PRINCIPAL ENGINEER		
PARK DEPARTMENT		
TRAFFIC DIVISION		
CHIEF P. W. ENGR.		

*AS BUILT 8/15/1984

SEWER IMPROVEMENTS FOR TRACT 9793-1
 ALONG RAIL ROAD TRACKS
 (FROM STA. 5+76.36 TO STA. 16+24.36)

HORIZ. SCALE: 1" = 40' VERT. SCALE: 1" = 4'

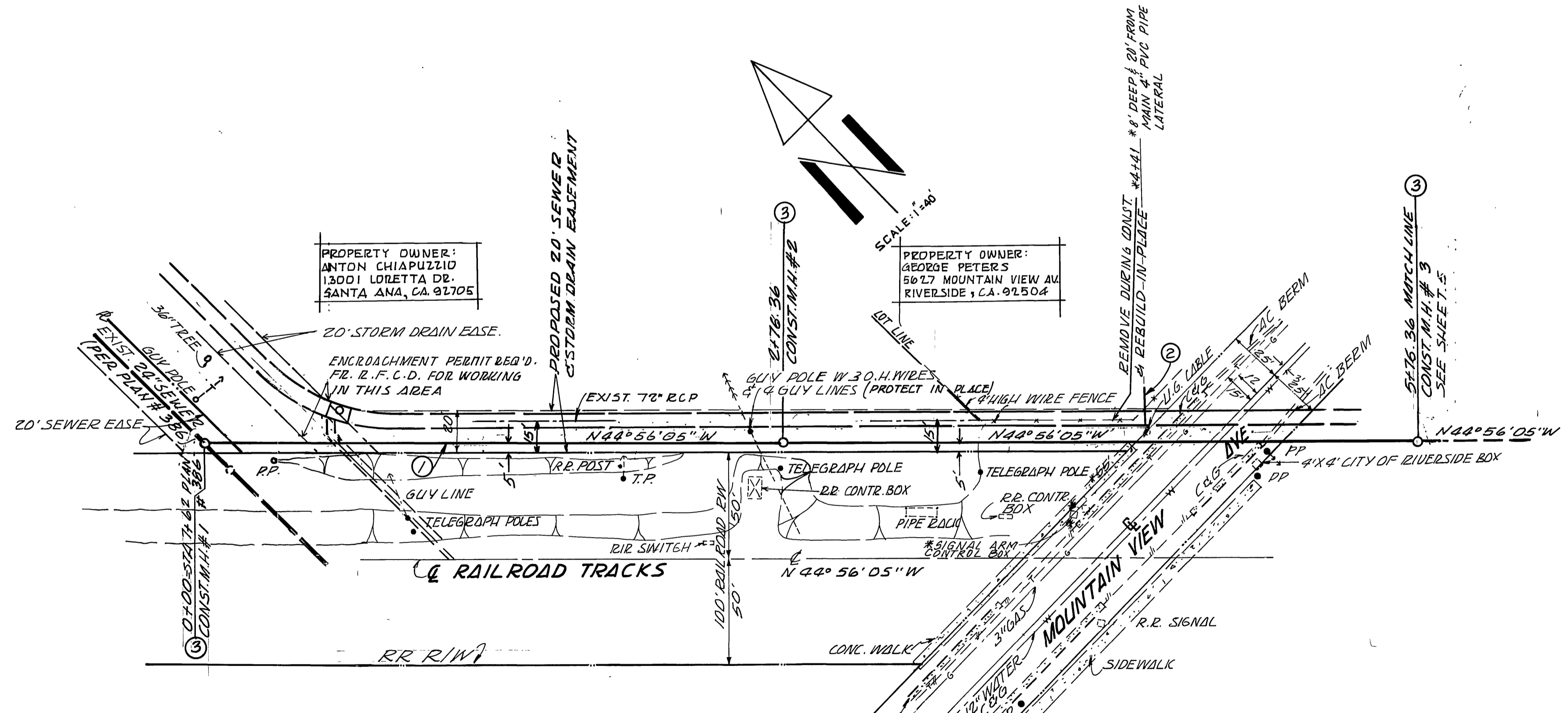
INDEX OF PROJECT NO. **5-1322**
 SHEET **5** OF **6**
 FILE NO.



PROFILE SCALE
HORIZ. 1" = 40'
VERT. 1" = 4'

CONST. 276.36 8" V.C.P. @ 2.68%

CONST. 300 8" V.C.P. @ 0.40%



PROPERTY OWNER:
ANTON CHIAPUZIO
13001 LORETTA DR.
SANTA ANA, CA 92705

PROPERTY OWNER:
GEORGE PETERS
5677 MOUNTAIN VIEW AV.
RIVERSIDE, CA 92504

BENCH MARK # H-1144. 602-7-69
UNION PACIFIC RR. 60' N.W. OF CENTER OF CROSSING OF JURUPA AVE.
IN TOP OF N.W. END OF N.E. CONCRETE HEADWALL OF 18" PIPE CULVERT
(53.00); 64' N.W. OF A SIGNAL; 45' N.E. OF THE N.E. RAIL; AND ABOUT
2.5' LOWER THAN TRACK ELEV. - 777.827 (1970)

- CONSTRUCTION NOTES:**
1. CONSTRUCT 8" V.C.P. SEWER
 2. CONSTRUCT SEWER MANHOLE PER STD. PLAN 500
 3. REMOVE & REPLACE EXIST. IMPROVEMENTS AS NECESSARY PER CITY REQUIREMENTS
 4. CONST. 4" V.C.P. SEWER LATERAL PER STD. NO. 562

* SHOW TELCO BURIED CABLE AS PER ATTACHED PRINTS. LOCATE AND PROTECT AS REQUIRED.

APPROVED BY TELEPHONE CO.
[Signature] 1/27/84
DATE

APPROVED BY U.G. CABLE CO.
[Signature] 1/27/84
DATE

APPROVED BY SO. CAL. GAS CO.
[Signature] 1/27/84
DATE

APPROVED BY ELECTRIC DEPT.
[Signature] 1/27/84
DATE

APPROVED BY WATER DEPT.
[Signature] 1-27-84
DATE

TAIT AND ASSOCIATES
CIVIL ENGINEERS - SURVEYORS - PLANNERS
900 ORANGEFAIR LANE, ANAHEIM, CALIFORNIA
(714) 870-1253 (213) 860-6595
APPROVED BY *[Signature]* DATE 4/21/83
R.E. No. 26492

MARK	REVISIONS	APPR.	DATE

CITY OF RIVERSIDE, CALIFORNIA
DEPARTMENT OF PUBLIC WORKS
APPROVED BY *[Signature]* DATE 2/24/84
PRINCIPAL ENGINEER
PARK DEPARTMENT
TRAFFIC DIVISION
CHIEF P. W. ENGR. 2.24.84

SEWER IMPROVEMENTS FOR TRACT 9793-1
ALONG RAILROAD TRACKS AND ACROSS MOUNTAIN VIEW AVE.
(FROM STA. 0+00 TO STA. 5+76.36)
APPROVED BY *[Signature]* DATE 2/24/84
DIRECTOR OF PUBLIC WORKS

PROJECT NO. S-1322
SHEET 6 OF 6
FILE NO.

* AS BUILT FROM AUG. 15, 1984

S-1322