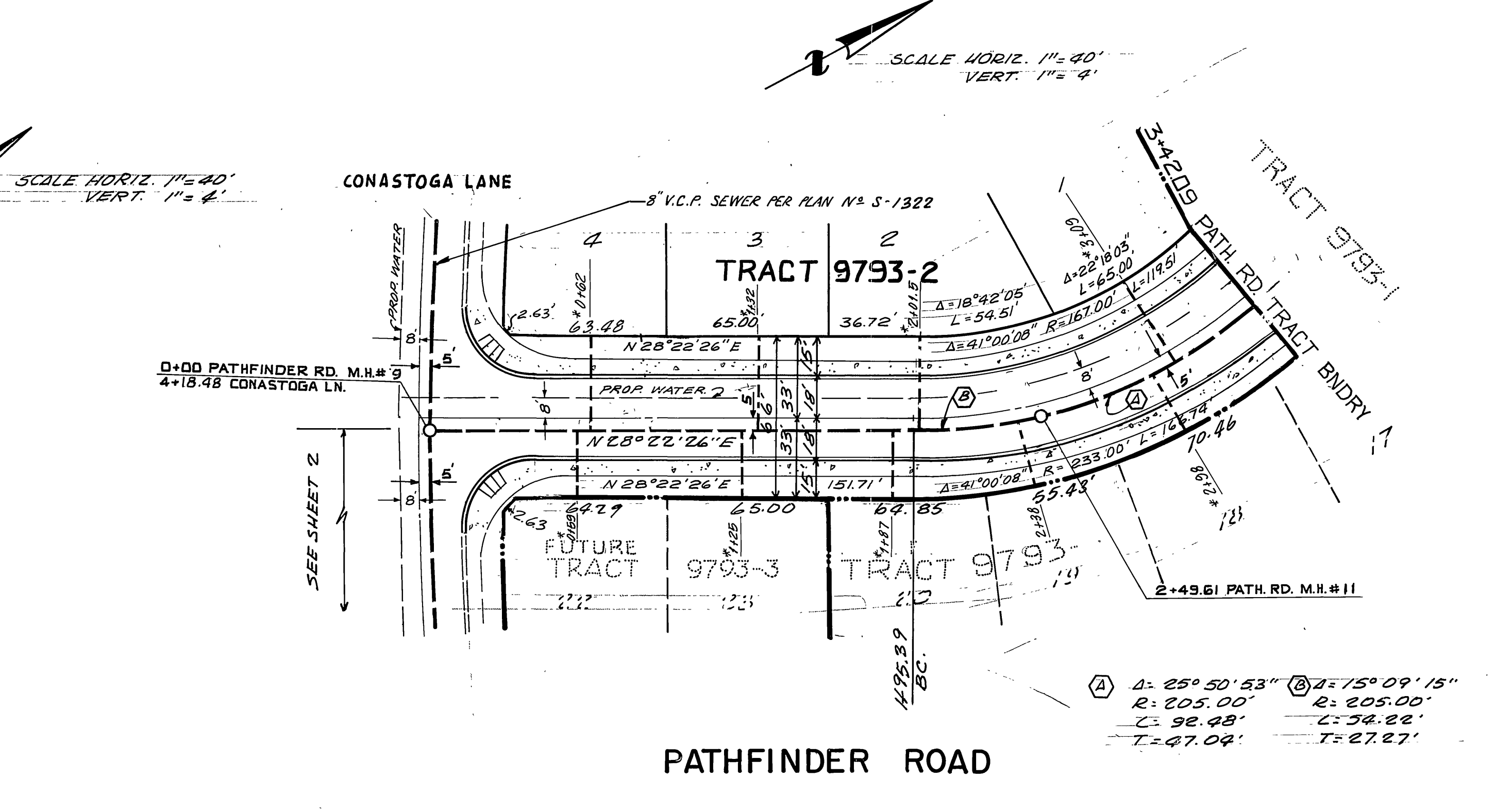
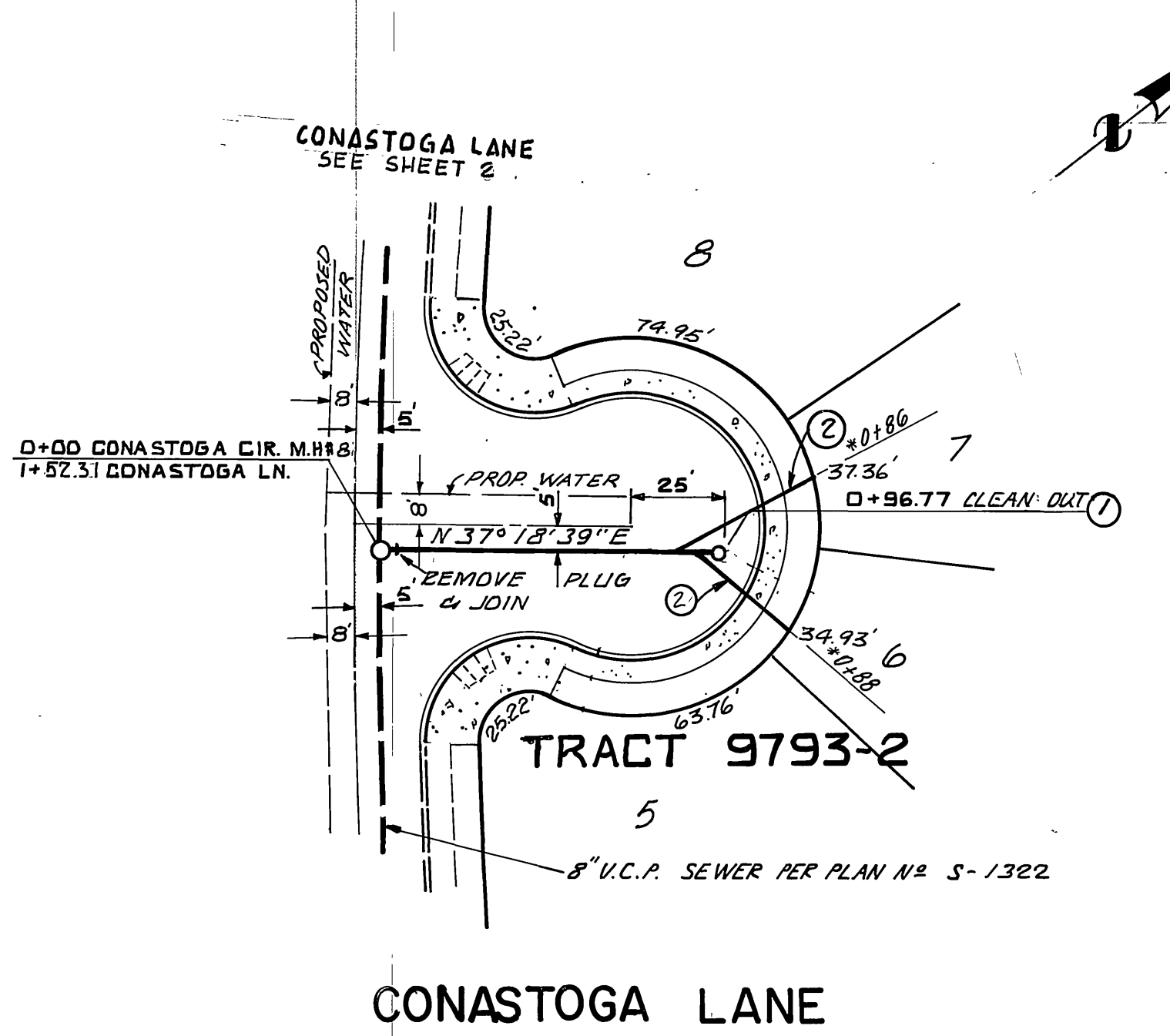


- GENERAL NOTES**
- IT SHALL BE THE RESPONSIBILITY OF THE CONTRACTOR TO CLEAR THE RIGHT OF WAY IN ACCORDANCE WITH THE PROVISIONS OF LAW AS IT AFFECTS EACH UTILITY INCLUDING IRRIGATION LINES AND APPURTENANCES AND AT NO COST TO THE CITY.
  - CONSTRUCTION SHALL BE IN ACCORDANCE WITH THE CITY OF RIVERSIDE, DEPARTMENT OF PUBLIC WORKS, STANDARD DRAWINGS, AND THE STANDARD SPECIFICATIONS FOR PUBLIC WORKS CONSTRUCTION, 1979 EDITION.
  - LOCATION OF LATERALS TO BE DETERMINED IN THE FIELD AT THE DIRECTION OF THE OWNER, AVOID CONFLICT WITH PROPOSED AND/OR EXISTING FACILITIES.
  - CONTRACTOR IS TO VERIFY EXISTING SEWER ELEVATION PRIOR TO CONSTRUCTION.
  - QUANTITIES SHOWN ARE FOR INFORMATION ONLY AND THE CITY OF RIVERSIDE IS NOT RESPONSIBLE FOR THEIR ACCURACY.
  - THE SEWER CONTRACTOR SHALL ADJUST MANHOLES TO FINAL GRADE AFTER PAVING IS COMPLETED.
  - A PLUG SHALL BE INSTALLED AND WILL REMAIN IN PLACE WHERE THE NEW SEWER CONNECTS WITH THE EXISTING SEWER UNTIL THE NEW SEWER IS ACCEPTED BY THE CITY.
  - PIPE SHALL BE BEDDED PER CASE 1, STANDARD NO. 452 UNLESS OTHERWISE SPECIFIED ON THE PLANS.
  - ALL STUBS AND LATERALS TO BE CONSTRUCTED IN ACCORDANCE WITH STANDARD DRAWING NO. 562, STUBS SHALL BE PLUGGED AND CAPPED.
  - LATERALS ARE TO BE 4" V.C.P. EXTENDED TO PROPERTY LINE.



**ENGINEER'S NOTE TO CONTRACTOR:**

THE EXISTENCE AND LOCATION OF ANY UNDERGROUND UTILITIES, PIPES, AND/OR STRUCTURES SHOWN ON THESE PLANS WERE OBTAINED BY A SEARCH OF AVAILABLE RECORDS. TO THE BEST OF OUR KNOWLEDGE, THERE ARE NO EXISTING UTILITIES EXCEPT AS SHOWN ON THESE PLANS. THE CONTRACTOR SHALL ASCERTAIN THE TRUE LOCATION OF ANY UNDERGROUND UTILITIES AND SHALL BE RESPONSIBLE FOR DAMAGE TO ANY PUBLIC OR PRIVATE UTILITIES, SHOWN OR NOT SHOWN HEREON.

**CONSTRUCTION NOTES AND QUANTITY ESTIMATE**

NO.	DESCRIPTION	QUANTITY
①	CONSTRUCT SEWER CLEANOUT PER STD. 560	2 EA.
②	CONSTRUCT 4" V.C.P. SEWER LATERAL PER STD. 562	889 L.F.

**SPECIAL NOTE**

"The private engineer signing these plans is responsible for assuring the accuracy and acceptability of the work hereon. In the event of discrepancies arising during construction as a result of errors or omissions, the private engineer shall be responsible for determining an acceptable solution and revising the plans for approval by the City."

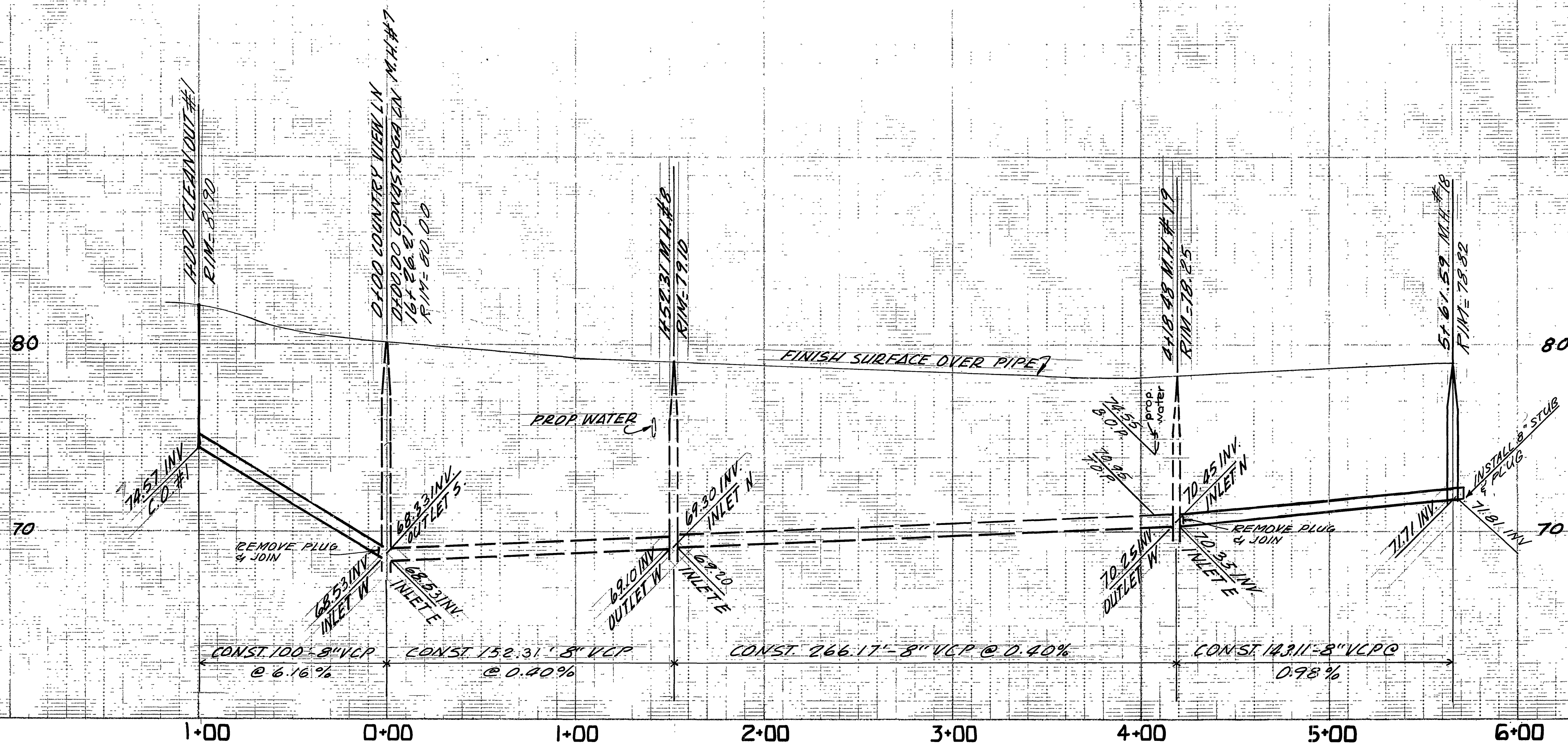
APPROVED BY WATER DEPT.  DATE 1-27-84	<b>BENCH MARK:</b> # 4-1144-602-7-69 UNION PACIFIC R.R. 60' N.W. OF CENTER OF CROSSING OF JURUPA AVE. IN TOP OF N.W. END OF N.E. CONCRETE HEADWALL OF 18" PIPE CULVERT (53.00); 64' N.W. OF A SIGNAL; 7.5' N.E. OF THE N.E. RAIL. AND ABOUT 2.5' LOWER THAN TRACK. ELEVATION = 777.827 (1970)	<b>TAIT AND ASSOCIATES</b> CIVIL ENGINEERS - SURVEYORS - PLANNERS 900 ORANGEFAIR LANE, ANAHEIM, CALIFORNIA (714) 870-1253 (213) 860-6595 APPROVED BY R.E. No. 24112 DATE 1/24/84	CITY OF RIVERSIDE, CALIFORNIA DEPARTMENT OF PUBLIC WORKS APPROVED BY DIRECTOR OF PUBLIC WORKS DATE 2/24/84	SEWER IMPROVEMENTS FOR <b>TRACT 9793-2</b> CONASTOGA LANE / PATHFINDER ROAD	PROJECT NO. <b>S-1323</b>
					SHEET <b>1</b> OF <b>2</b>

DESIGNED BY R.S. DRAWN BY H.S. CHECKED BY J.C. DATE 2/24/84

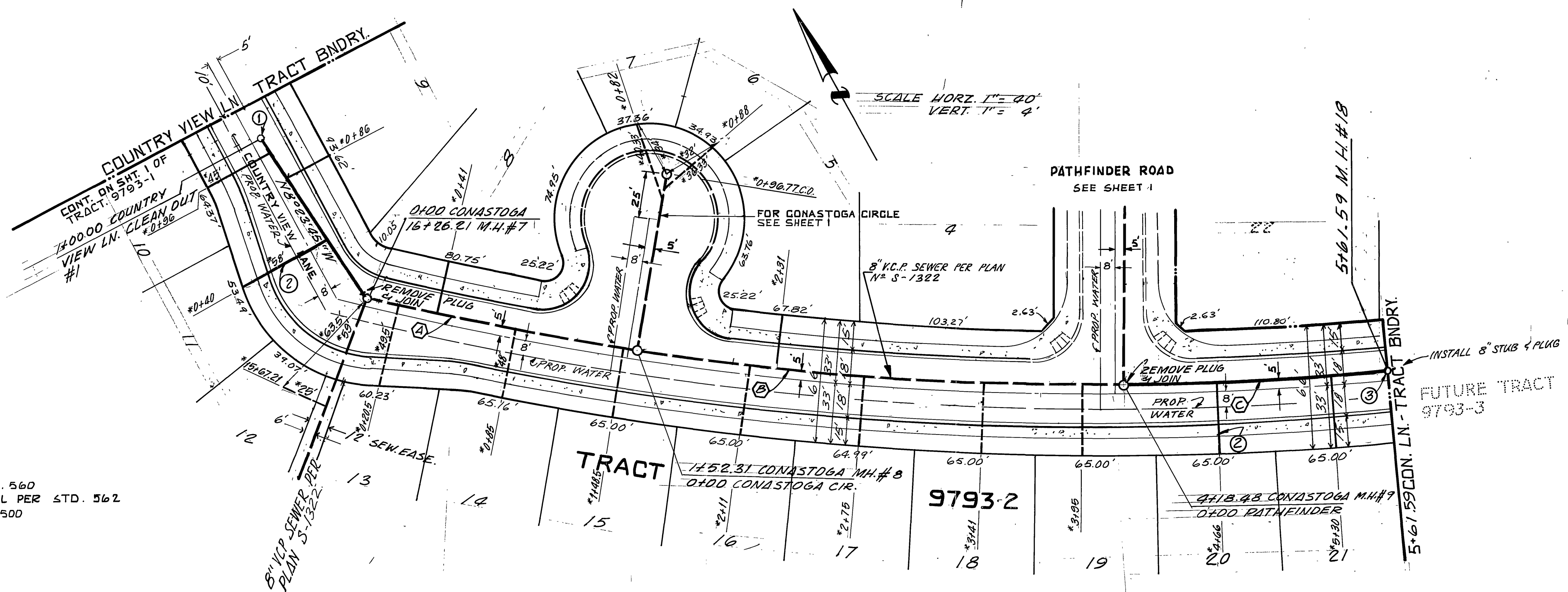
HORIZ. SCALE: 1" = 40' VERT. SCALE: 1" = 4'

FILE NO.





PROFILE SCALE  
HORIZ. 1" = 40'  
VERT. 1" = 4'



- CONSTRUCTION NOTES**
- ① CONST. SEWER CLEANOUT PER STD. 560
  - ② CONST. 4" V.C.P. SEWER LATERAL PER STD. 562
  - ③ CONST. SEWER M.H. PER STD. PLAN 500

**SEWER CURVE DATA**

	Δ	R	L	T
A	5° 06' 54"	1706.08'	152.31'	74.20'
B	8° 56' 20"	1706.08'	206.17'	133.36'
C	4° 48' 22"	1706.08'	143.11'	71.60'

APPROVED BY WATER DEPT.  
*Don J. Pavek*  
DATE 1-27-84

BENCH MARK: # H-1144, 602-7-69  
UNION PACIFIC R.R. 60' N.W. OF CENTER OF CROSSING OF JURUPA AVE. IN TOP OF N.W. END OF N.E. CONCRETE HEADWALL OF 18" PIPE CULVERT (53.00); 64' N.W. OF A SIGNAL; 9.5' N.E. OF THE N.E. RAIL, AND ABOUT 2.5' LOWER THAN TRACK.  
ELEVATION = 777.827 (1970)

**TAIT AND ASSOCIATES**  
CIVIL ENGINEERS - SURVEYORS - PLANNERS  
900 ORANGEFAIR LANE, ANAHEIM, CALIFORNIA  
(714) 870-1253 (213) 860-6595  
APPROVED BY *Bruce C. Rank* DATE 2/21/83  
R.E. No. 26472

MARK	REVISIONS	APPR. DATE

DESIGNED BY *E.S.* DRAWN BY *H.S.* CHECKED BY *H.S.*

**CITY OF RIVERSIDE, CALIFORNIA**  
**DEPARTMENT OF PUBLIC WORKS**  
APPROVED BY *[Signature]* DATE 2/24/84  
PRINCIPAL ENGINEER  
PARK DEPARTMENT  
TRAFFIC DIVISION  
CHIEF P. W. ENGR. *[Signature]* DATE 2/24/84

SEWER IMPROVEMENTS FOR  
**TRACT 9793-2**  
CONASTOGA LANE

INDEX UP  
PROJECT NO. **S-1323**  
SHEET **2** OF **2**  
FILE NO.

\* AS BUILT #1913 AUG. 1984

HORIZ. SCALE: 1" = 40' VERT. SCALE: 1" = 4'