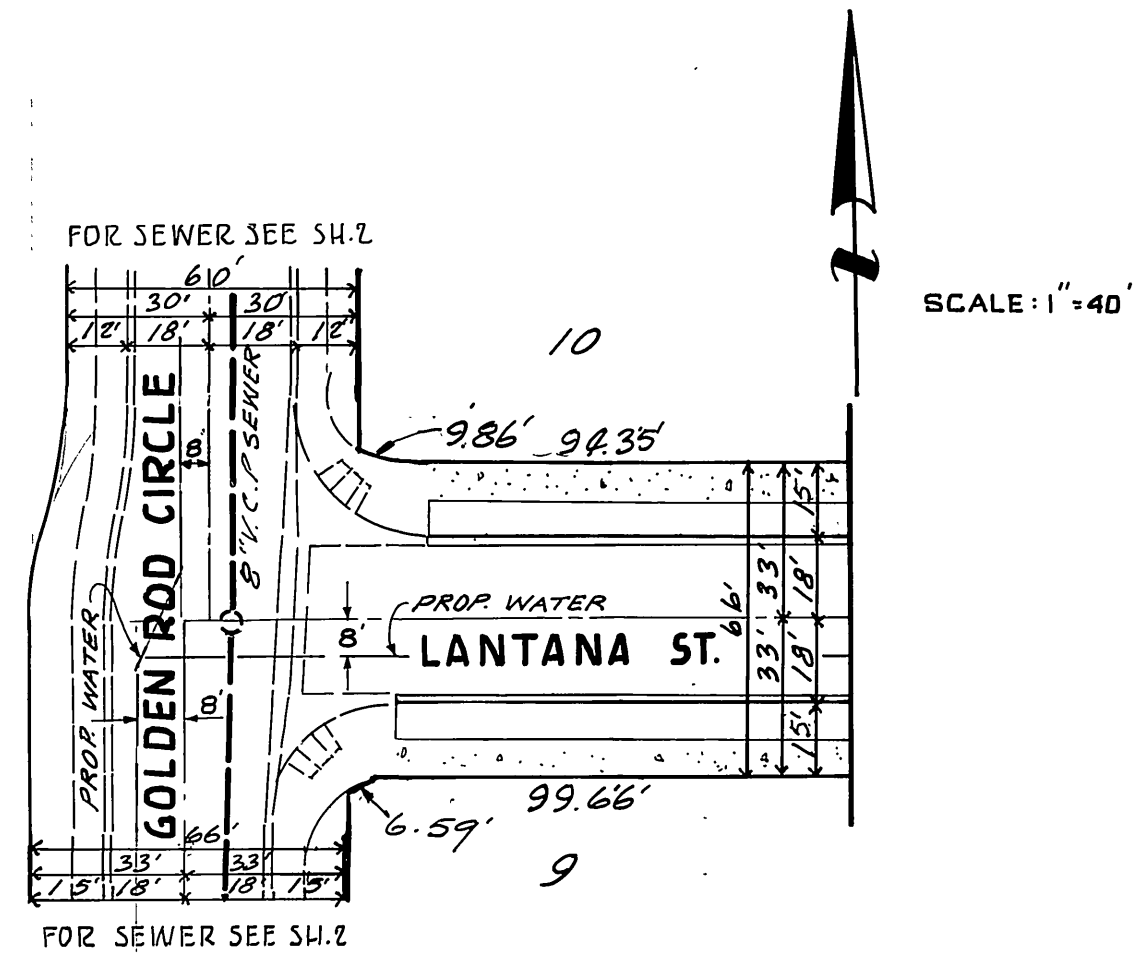


GENERAL NOTES

1. IT SHALL BE THE RESPONSIBILITY OF THE CONTRACTOR TO CLEAR THE RIGHT OF WAY IN ACCORDANCE WITH THE PROVISIONS OF LAW AS IT AFFECTS EACH UTILITY INCLUDING IRRIGATION LINES AND APPURTENANCES AND AT NO COST TO THE CITY.
2. CONSTRUCTION SHALL BE IN ACCORDANCE WITH THE CITY OF RIVERSIDE, DEPARTMENT OF PUBLIC WORKS, STANDARD DRAWINGS, AND THE STANDARD SPECIFICATIONS FOR PUBLIC WORKS CONSTRUCTION, 1979 EDITION.
3. LOCATION OF LATERALS TO BE DETERMINED IN THE FIELD AT THE DIRECTION OF THE OWNER. AVOID CONFLICT WITH PROPOSED AND/OR EXISTING FACILITIES.
4. CONTRACTOR IS TO VERIFY EXISTING SEWER ELEVATION PRIOR TO CONSTRUCTION.
5. QUANTITIES SHOWN ARE FOR INFORMATION ONLY AND THE CITY OF RIVERSIDE IS NOT RESPONSIBLE FOR THEIR ACCURACY.
6. THE SEWER CONTRACTOR SHALL ADJUST MANHOLES TO FINAL GRADE AFTER PAVING IS COMPLETED.
7. A PLUG SHALL BE INSTALLED AND WILL REMAIN IN PLACE WHERE THE NEW SEWER CONNECTS WITH THE EXISTING SEWER UNTIL THE NEW SEWER IS ACCEPTED BY THE CITY.
8. PIPE SHALL BE BEDDED PER CASE 1, STANDARD DRAWING NO. 452, UNLESS OTHERWISE SPECIFIED ON THE PLANS.
9. ALL STUBS AND LATERALS TO BE CONSTRUCTED IN ACCORDANCE WITH STANDARD DRAWING NO. 562. STUBS SHALL BE PLUGGED AND CAPPED.
10. LATERALS ARE TO BE 4" V.C.P. EXTENDED TO PROPERTY LINE.



ENGINEER'S NOTE TO CONTRACTOR:

THE EXISTENCE AND LOCATION OF ANY UNDERGROUND UTILITIES, PIPES, AND/OR STRUCTURES SHOWN ON THESE PLANS WERE OBTAINED BY A SEARCH OF AVAILABLE RECORDS. TO THE BEST OF OUR KNOWLEDGE, THERE ARE NO EXISTING UTILITIES EXCEPT AS SHOWN ON THESE PLANS. THE CONTRACTOR SHALL ASCERTAIN THE TRUE LOCATION OF ANY UNDERGROUND UTILITIES AND SHALL BE RESPONSIBLE FOR DAMAGE TO ANY PUBLIC OR PRIVATE UTILITIES, SHOWN OR NOT SHOWN HEREON.

CONSTRUCTION NOTES AND QUANTITY ESTIMATE

NO.	DESCRIPTION	QUANTITY
①	CONSTRUCT 8" V.C.P. SEWER	763 L.F.
②	CONSTRUCT 4" V.C.P. SEWER LATERAL PER STD. 562	716 L.F.
③	CONSTRUCT SEWER MANHOLE PER STD. 500	4 EA.
④	CONC. ENCASE SEWERLINE PER CWD-022	90 L.F.
⑤	CONSTRUCT 8" TEMPORARY PLUG	1 EA.

SPECIAL NOTE

"The private engineer signing these plans is responsible for assuring the accuracy and acceptability of the work hereon. In the event of discrepancies arising during construction as a result of errors or omissions, the private engineer shall be responsible for determining an acceptable solution and revising the plans for approval by the City."

APPROVED BY WATER DEPT.
Don L. Paul 1-27-84
 DATE

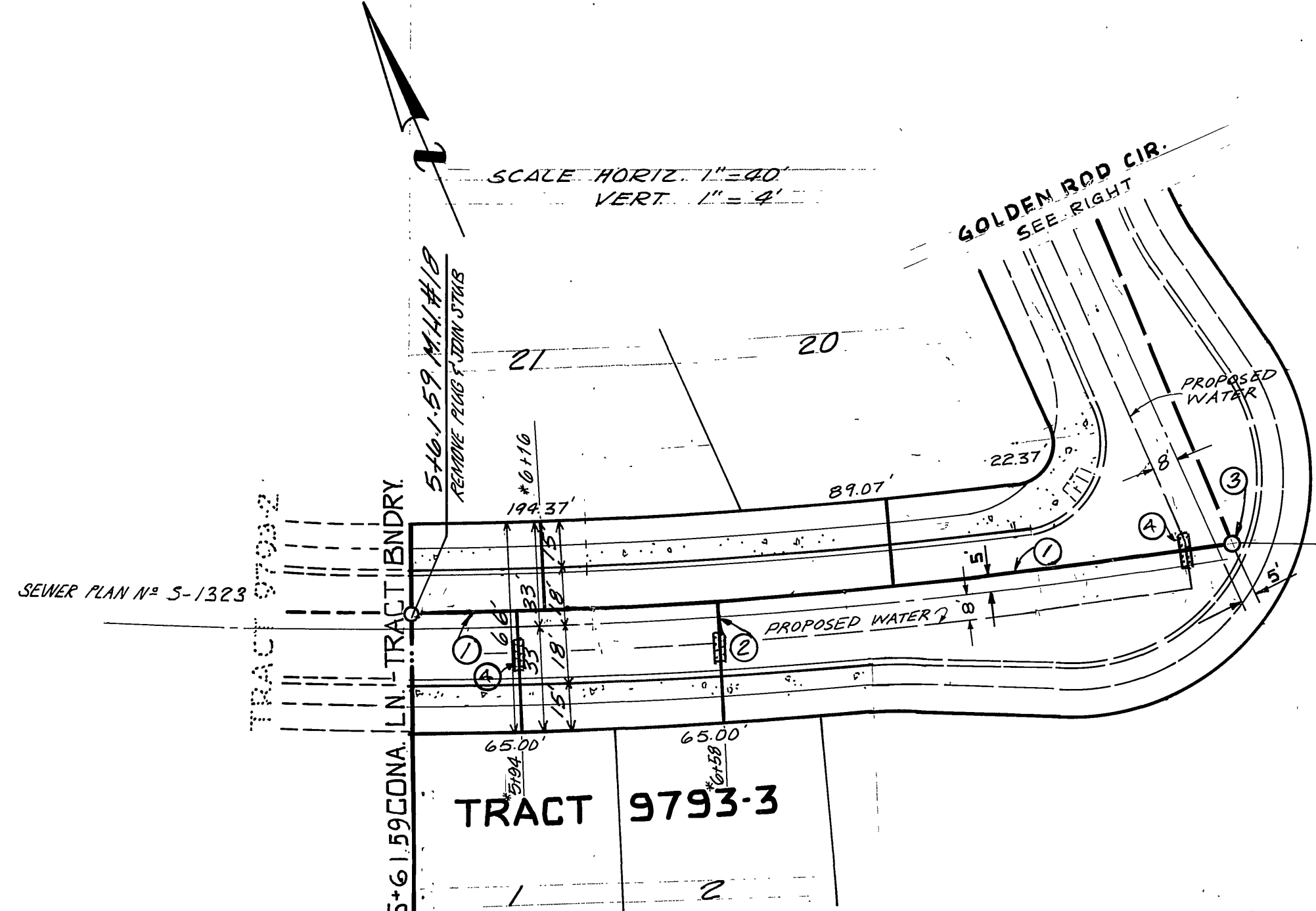
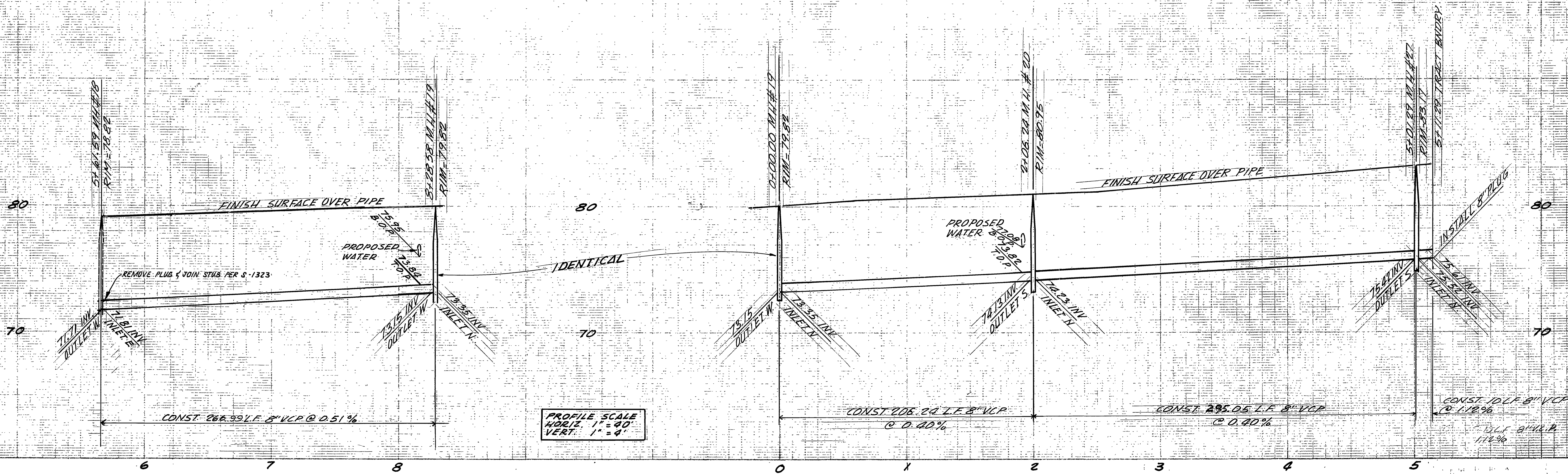
BENCH MARK: # 4-1144, 602-7-69
 UNION PACIFIC R.R. 60' N.W. OF CENTER OF CROSSING OF JURUPA AVE. IN TOP OF N.W. END OF N.E. CONCRETE HEADWALL OF 18" PIPE CULVERT (53.00); 60' N.W. OF A SIGNAL; 9.5' N.E. OF THE N.E. RAIL AND ABOUT 2.5' LOWER THAN TRACK
 ELEVATION = 777.827 (1970)

TAIT AND ASSOCIATES
 CIVIL ENGINEERS - SURVEYORS - PLANNERS
 900 ORANGEFAIR LANE, ANAHEIM, CALIFORNIA
 (714) 870-1253 (213) 860-6595
 APPROVED BY *Paul C. Blank* DATE 2/24/84
 R.E. No. 26492

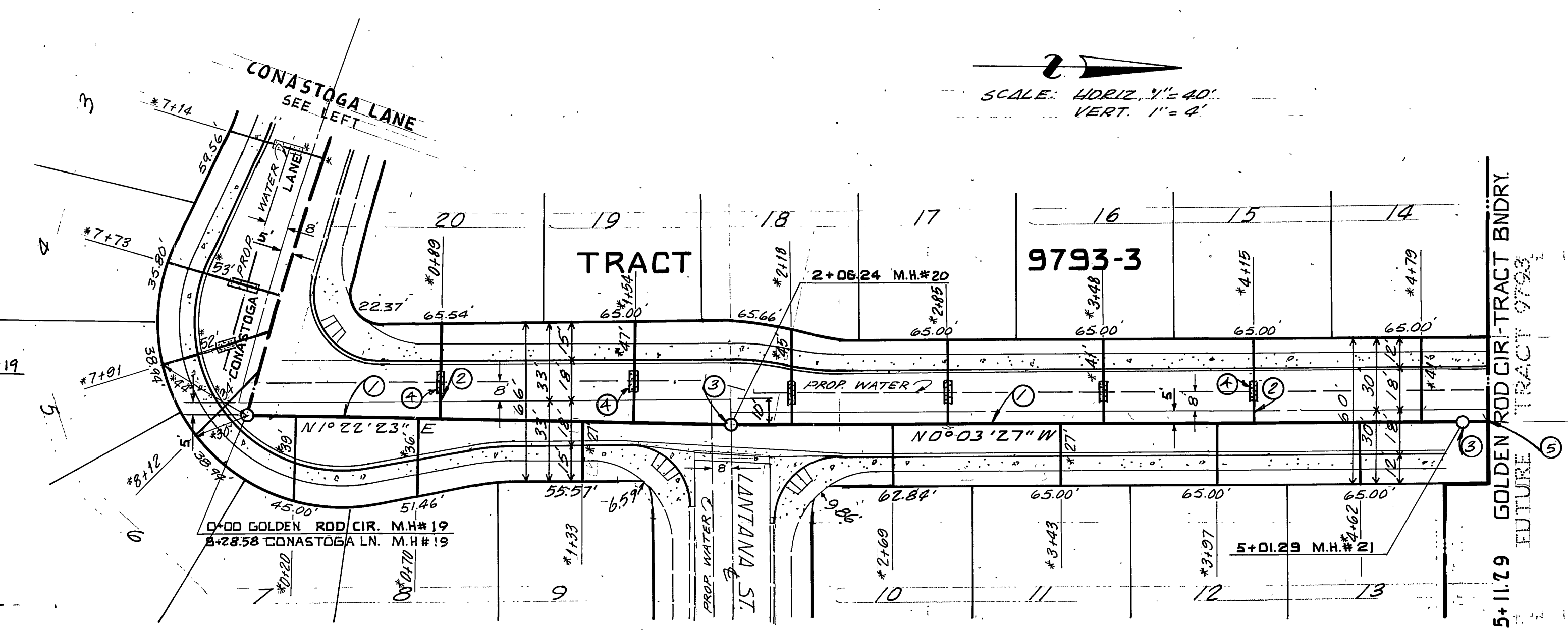
MARK	REVISIONS	APPR.	DATE
DESIGNED BY <i>R.S.</i>	DRAWN BY <i>H.S.</i>	CHECKED BY <i>H.S.</i>	DATE 2/24/84

CITY OF RIVERSIDE, CALIFORNIA
DEPARTMENT OF PUBLIC WORKS
 APPROVED BY *[Signature]* DATE 2/24/84
 PRINCIPAL ENGINEER
 PARK DEPARTMENT
 TRAFFIC DIVISION
 CHIEF P. W. ENGR. *[Signature]* DATE 2/24/84

* AS BUILT 8/20/84
 INDEX UP
SEWER IMPROVEMENTS FOR TRACT 9793-3 COVER SHEET
 PROJECT NO. S-1324
 SHEET 1 OF 2
 HORIZ. SCALE: 1" = 40' VERT. SCALE: 1" = 4'
 FILE NO.



SEWER CURVE DATA
 $\Delta = 8^{\circ}57'59''$
 $R = 1706.08'$
 $L = 266.99'$
 $T = 133.77'$



CONASTOGA LANE

GOLDEN ROD LANE

- CONSTRUCTION NOTES**
- ① CONST. 8" V.C.P. SEWER
 - ② CONST. 4" V.C.P. SEWER LATERAL PER STD 562
 - ③ CONST. SEWER MANHOLE PER STD. 500
 - ④ CONST. PLUG

APPROVED BY WATER DEPT
Dan L. Parks 1-27-84
 DATE

BENCH MARK: # 4-1144, 602-7-69
 UNION PACIFIC R.R. 60' N.W. OF CENTER OF CROSSING OF JURUPA AVE. IN TOP OF N.W. END OF N.E. CONCRETE HEADWALL OF 18" PIPE CULVERT (53.00); 64' N.W. OF A SIGNAL; 9.5' N.E. OF THE N.E. RAIL AND ABOUT 2.5' LOWER THAN TRACK.
 ELEVATION = 777.827 (1970)

TAIT AND ASSOCIATES
 CIVIL ENGINEERS - SURVEYORS - PLANNERS
 900 ORANGFAIR LANE, ANAHEIM, CALIFORNIA (714) 870-1253 (213) 860-6595
 APPROVED BY *Bruce E. Bank* DATE 2/21/83
 R.E. No. 24112

MARK	REVISIONS	APPR.	DATE

CITY OF RIVERSIDE, CALIFORNIA
 DEPARTMENT OF PUBLIC WORKS

APPROVED BY: *[Signature]* DATE: 2/24/84
 PRINCIPAL ENGINEER
 PARK DEPARTMENT
 TRAFFIC DIVISION
 CHIEF P.W. ENGR.

* AS BUILT Prep. AUG. 14, 1984.

SEWER IMPROVEMENTS FOR TRACT 9793-3
 CONASTOGA LN./GOLDEN ROD LANE

HORIZ. SCALE: 1" = 40' VERT. SCALE: 1" = 4'

INDEX UP

PROJECT NO. **S-1324**

SHEET 2 OF 2

FILE NO.