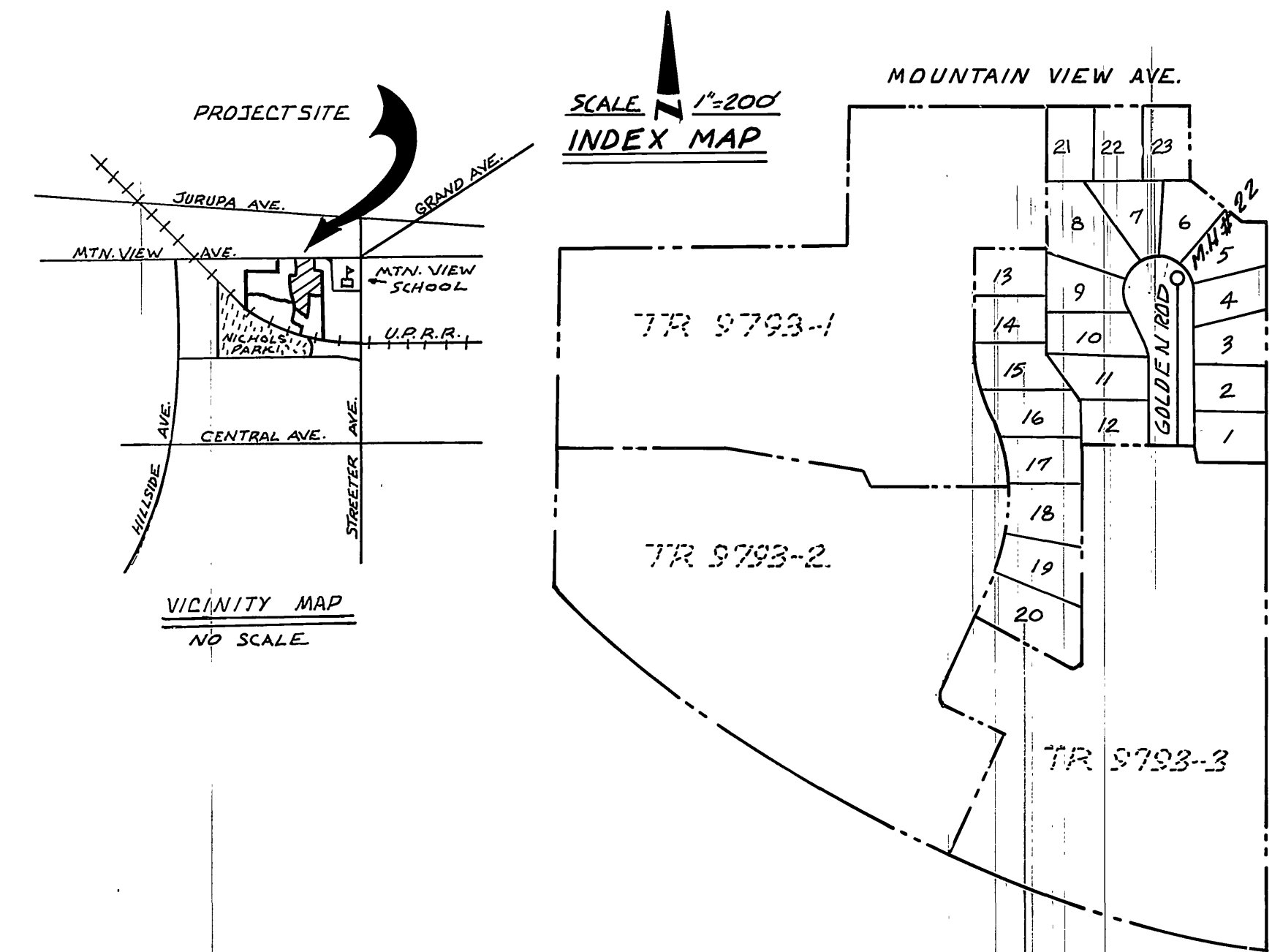
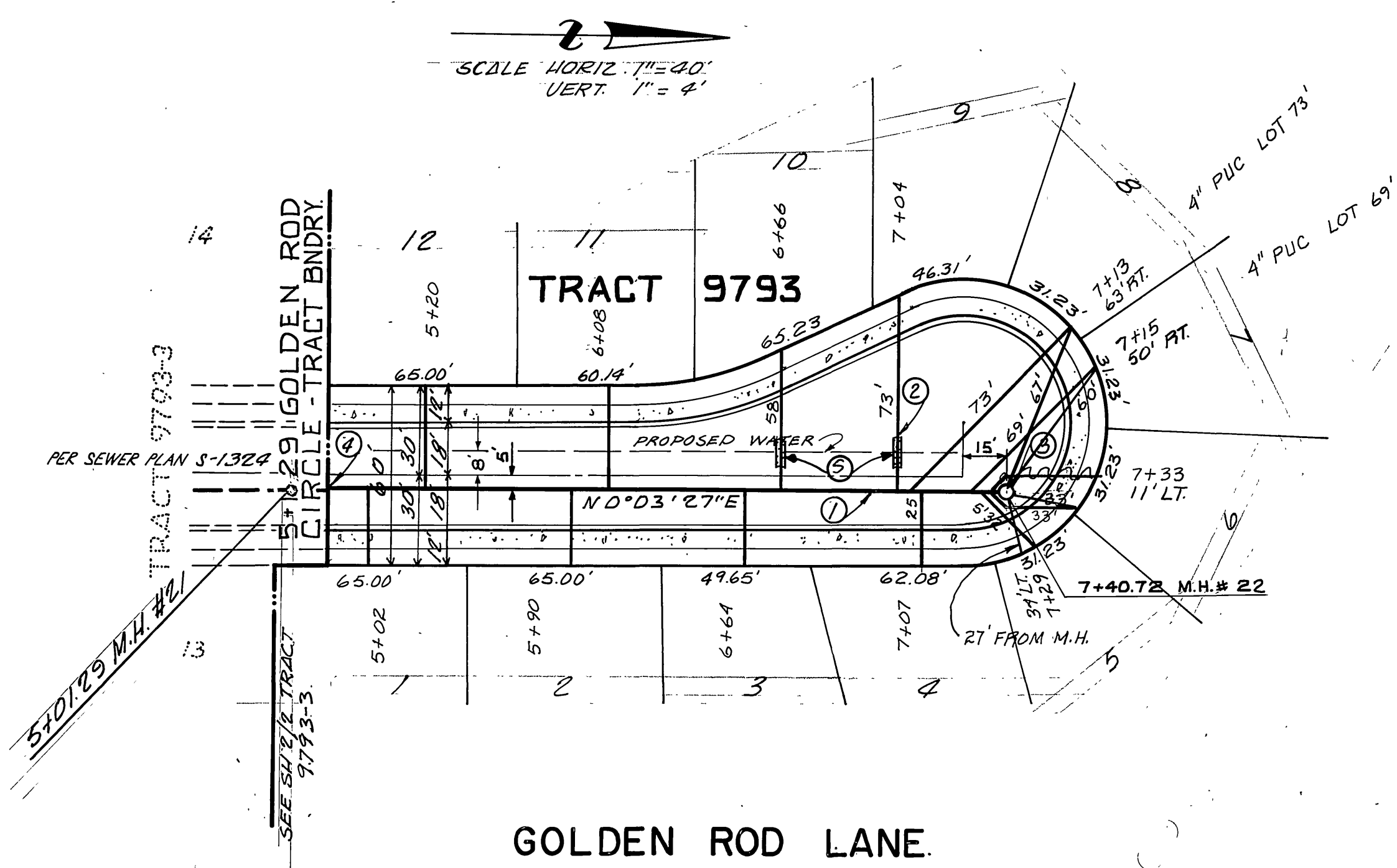


PROFILE SCALE
HORIZ. 1" = 40'
VERT. 1" = 4'



GENERAL NOTES

- IT SHALL BE THE RESPONSIBILITY OF THE CONTRACTOR TO CLEAR THE RIGHT OF WAY IN ACCORDANCE WITH THE PROVISIONS OF LAW AS IT AFFECTS EACH UTILITY INCLUDING IRRIGATION LINES AND APPURTENANCES AND AT NO COST TO THE CITY.
- CONSTRUCTION SHALL BE IN ACCORDANCE WITH THE CITY OF RIVERSIDE, DEPARTMENT OF PUBLIC WORKS, STANDARD DRAWINGS, AND THE STANDARD SPECIFICATIONS FOR PUBLIC WORKS CONSTRUCTION, 1979 EDITION.
- LOCATION OF LATERALS TO BE DETERMINED IN THE FIELD AT THE DIRECTION OF THE OWNER AVOID CONFLICT WITH PROPOSED AND/OR EXISTING FACILITIES.
- CONTRACTOR IS TO VERIFY EXISTING SEWER ELEVATION PRIOR TO CONSTRUCTION.
- QUANTITIES SHOWN ARE FOR INFORMATION ONLY AND THE CITY OF RIVERSIDE IS NOT RESPONSIBLE FOR THEIR ACCURACY.
- THE SEWER CONTRACTOR SHALL ADJUST MANHOLES TO FINAL GRADE AFTER PAVING IS COMPLETED.
- A PLUG SHALL BE INSTALLED AND WILL REMAIN IN PLACE WHERE THE NEW SEWER CONNECTS WITH THE EXISTING SEWER UNTIL THE NEW SEWER IS ACCEPTED BY THE CITY.
- PIPE SHALL BE BEDDED PER CASE 1, STANDARD DRAWING NO. 452, UNLESS OTHERWISE SPECIFIED ON THE PLANS.
- ALL STUBS AND LATERALS TO BE CONSTRUCTED IN ACCORDANCE WITH STANDARD DRAWING NO. 562; STUBS SHALL BE PLUGGED AND CAPPED.
- LATERALS ARE TO BE 4" V.C.P. EXTENDED TO PROPERTY LINE.



ENGINEER'S NOTE TO CONTRACTOR:

THE EXISTENCE AND LOCATION OF ANY UNDERGROUND UTILITIES, PIPES, AND/OR STRUCTURES SHOWN ON THESE PLANS WERE OBTAINED BY A SEARCH OF AVAILABLE RECORDS. TO THE BEST OF OUR KNOWLEDGE, THERE ARE NO EXISTING UTILITIES EXCEPT AS SHOWN ON THESE PLANS. THE CONTRACTOR SHALL ASCERTAIN THE TRUE LOCATION OF ANY UNDERGROUND UTILITIES AND SHALL BE RESPONSIBLE FOR DAMAGE TO ANY PUBLIC OR PRIVATE UTILITIES, SHOWN OR NOT SHOWN HEREON.

CONSTRUCTION NOTES AND QUANTITY ESTIMATE

NO	DESCRIPTION	QUANTITY
①	CONSTRUCT 8" V.C.P. SEWER	230 L.F.
②	CONSTRUCT 4" V.C.P. SEWER LATERAL PER STD. 562	444 L.F.
③	CONSTRUCT SEWER MANHOLE PER STD. 500	1 EA.
④	REMOVE EXISTING PLUG	1 EA.
⑤	CONC. ENCASE LATERAL PER CWO-022	20 L.F.

SPECIAL NOTE

"I, the private engineer signing these plans is responsible for assuring the accuracy and acceptability of the work hereon. In the event of discrepancies arising during construction as a result of errors or omissions, the private engineer shall be responsible for determining an acceptable solution and revising the plans for approval by the City."

* AS BUILT OCT. 3, 1984 TAWNY

APPROVED BY WATER DEPT.
Dan J. Pank
1-27-84
DATE

BENCH MARK: # H-1144. 602-7-69
UNION PACIFIC R.R. 60' N.N.W. OF CENTER OF CROSSING OF JURUPA AVE. IN TOP OF N.W. END OF NE. CONCRETE HEADWALL OF 18" PIPE CULVERT (53.00); 64' N.W. OF A SIGNAL; 9.5' N.E. OF THE N.E. RAIL, AND ABOUT 2.5' LOWER THAN TRACK.
ELEVATION = 717.827 (1970)

TAIT AND ASSOCIATES
CIVIL ENGINEERS - SURVEYORS - PLANNERS
900 ORANGEFAIR LANE, ANAHEIM, CALIFORNIA
(714) 870-1253
APPROVED BY *Bruce E. Blank* DATE 6/21/83
R.E. No. 2411

MARK	REVISIONS	APPR.	DATE

DESIGNED BY R.S. DRAWN BY U.S. CHECKED BY *[Signature]*

CITY OF RIVERSIDE, CALIFORNIA
DEPARTMENT OF PUBLIC WORKS
APPROVED BY *[Signature]*
PRINCIPAL ENGINEER
PARK DEPARTMENT
TRAFFIC DIVISION
CHIEF P. W. ENGR. USA 224
DATE 2/29/84

SEWER IMPROVEMENTS FOR
TRACT 9793
GOLDEN ROD LANE
HORIZ. SCALE: 1" = 40'
VERT. SCALE: 1" = 4'

INDEX OF PROJECT NO.
S-1325
SHEET 1 OF 1
FILE NO.