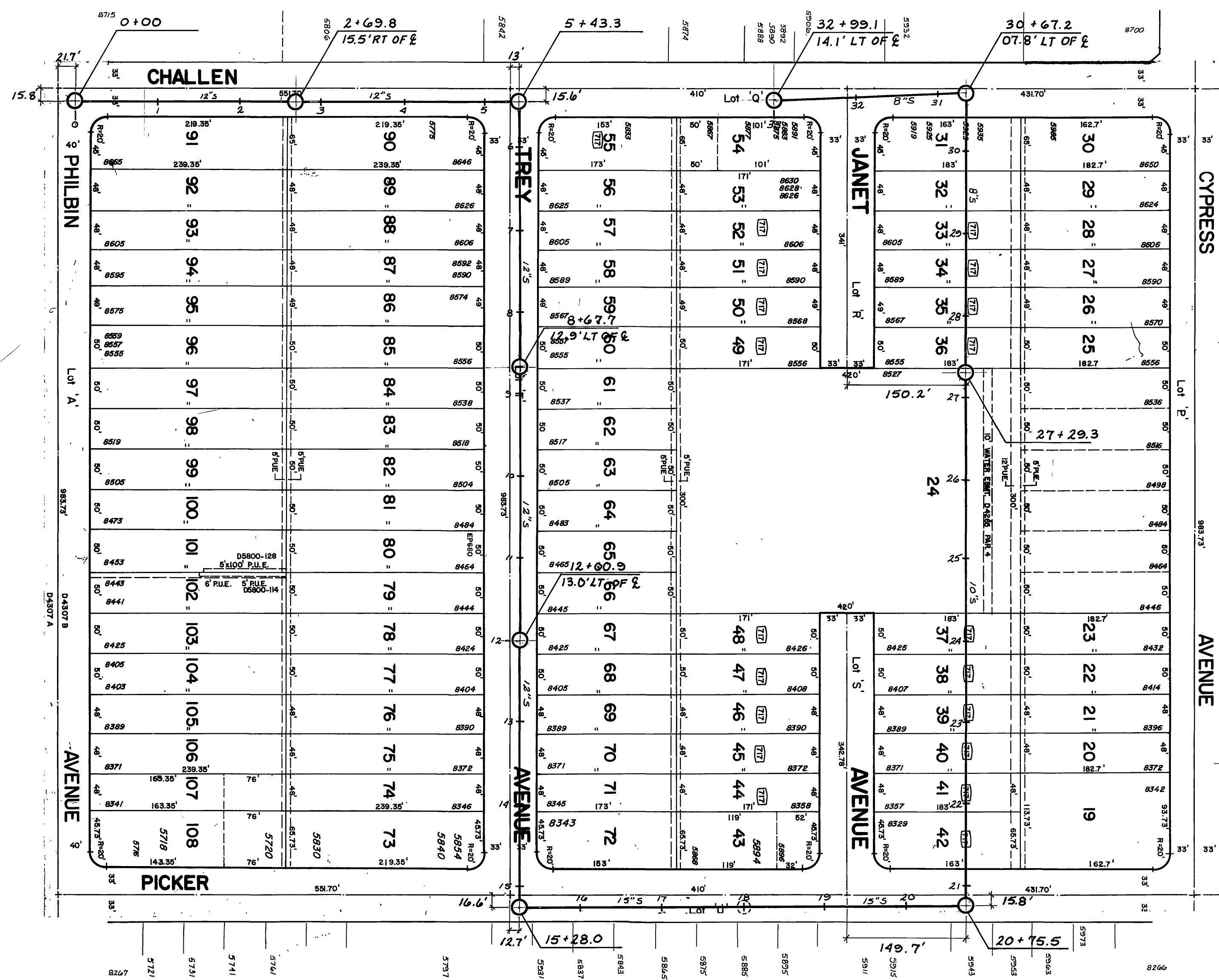


BENCH MARK
 PK NAIL 18 FT NLY OF NW CB RETURN
 AT PHILBIN AVE AND CHALLENGE AVE
 ELEV: 740.45



NOTE
 Plan and Profile plotted from FB. No. LL8 pg. 94.

CITY OF RIVERSIDE PUBLIC WORKS DEPARTMENT		CAMP ANZA SEWERS		ACCOUNT NO. 30-577-667
		CHALLENGE - PHILBIN TO CYPRESS TREY - CHALLENGE TO PICKER N OF JANET - CHALLENGE TO PICKER		S-1326 SHEET 1 OF 1
APPROVED BY PRINCIPAL ENGINEER <i>[Signature]</i>	APPROVED BY PUBLIC WORKS DIRECTOR <i>[Signature]</i>	DATE 8/25/83	HORIZ. SCALE: 1" = 100' VERT. SCALE: 1" = 4'	
DESIGNED BY DRAWN BY: <i>BLD</i>	CHECKED BY: <i>BLD</i>	TRAFFIC DIVISION CHIEF P.W. ENGINEER <i>[Signature]</i>	INDEX	