

INCORPORATED 1883  
CITY OF RIVERSIDE  
**RIVERSIDE CALIFORNIA**

**PUBLIC WORKS DEPARTMENT**

**MEGGINSON TRUNK  
SEWER EXTENSION**

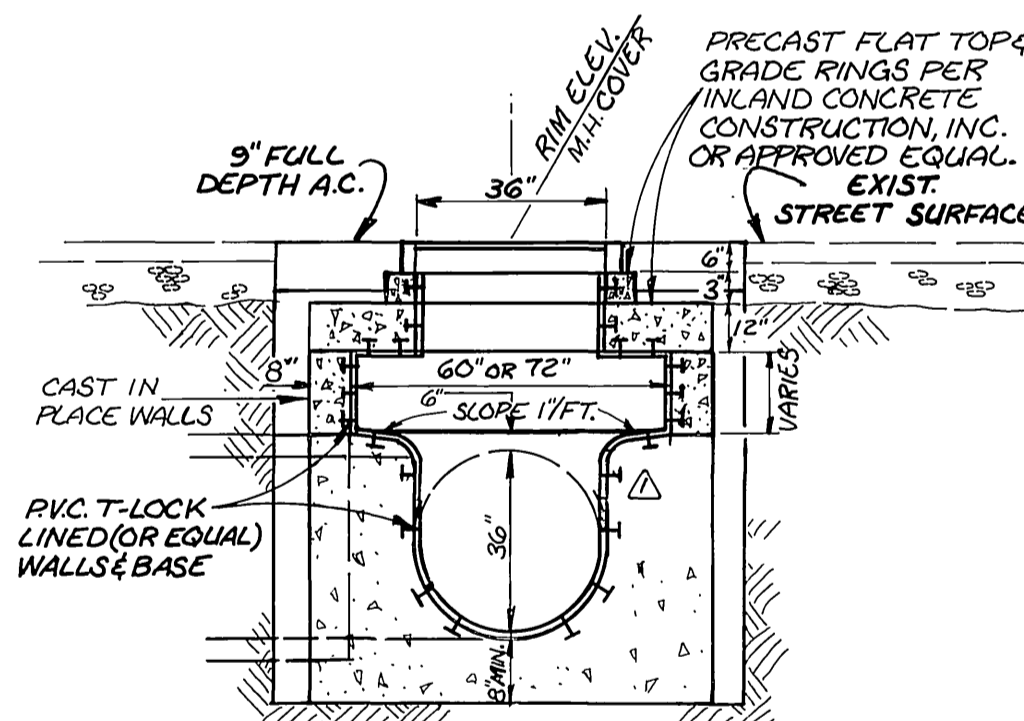
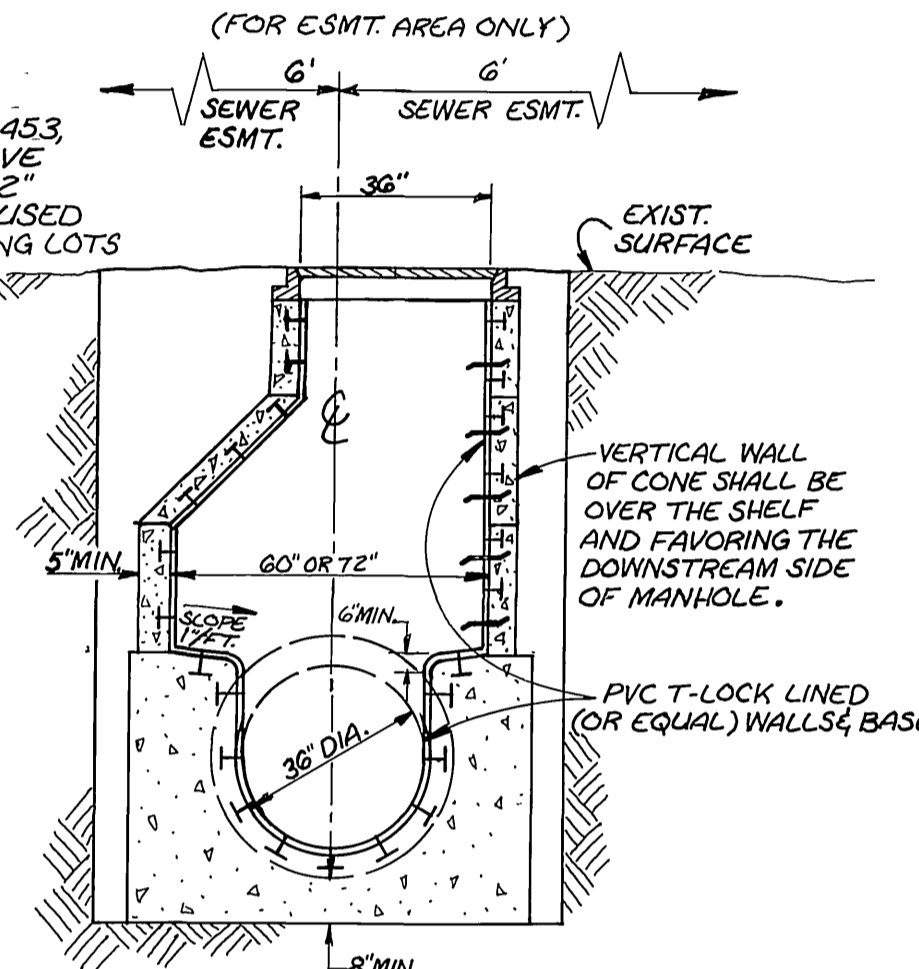
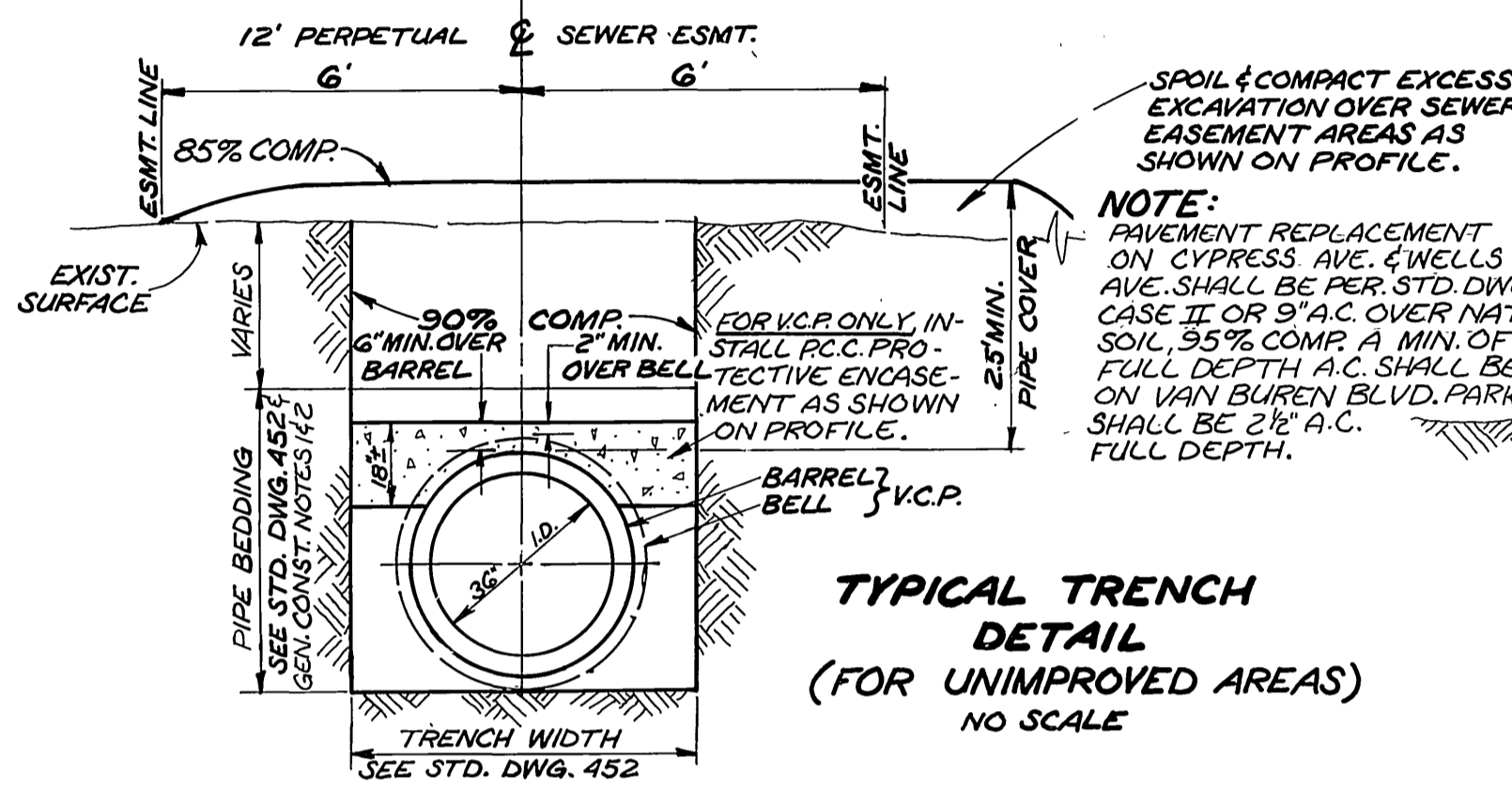
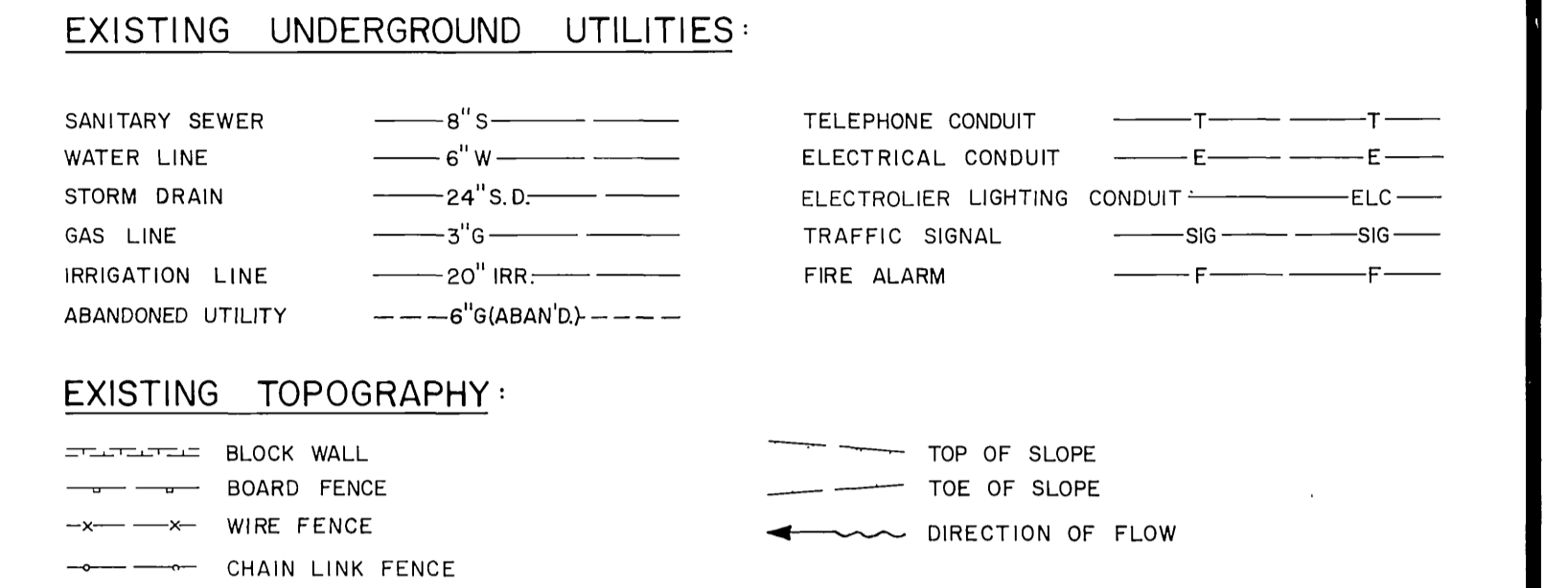
VAN BUREN BLVD. TO CHALLENGE AVE.

**PHASE II**

**CONSTRUCTION LEGEND**



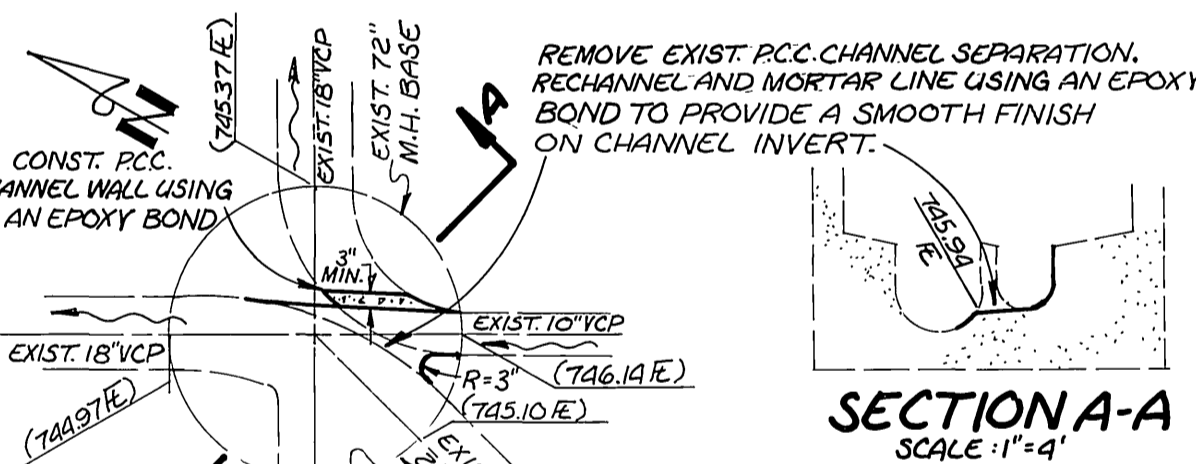
**EXISTING UNDERGROUND & TOPOGRAPHY LEGEND**



**SPECIFIC CONSTRUCTION NOTES**

NUMBERS ABOVE 100 IN A HEXAGON ON THE PLAN REFER TO THE RESPECTIVE STANDARD DRAWING AND SHALL BE CONSTRUCTED ACCORDINGLY, UNLESS MODIFICATIONS ARE NOTED ON THE PLAN OR COVER SHEET BELOW. ANY NUMBER SHOWN BELOW THE STANDARD DRAWING NUMBER INDICATES THE SPECIFIC ALTERNATE TO BE CONSTRUCTED.

CONSTRUCT 5' OR 6' DIA. M.H. PER C/R STD. DWG. NO. 500 (MOD.) WITH NONCONCENTRIC CONE (CONCENTRIC FLAT TOP @ 5'-8 1/4\"/>



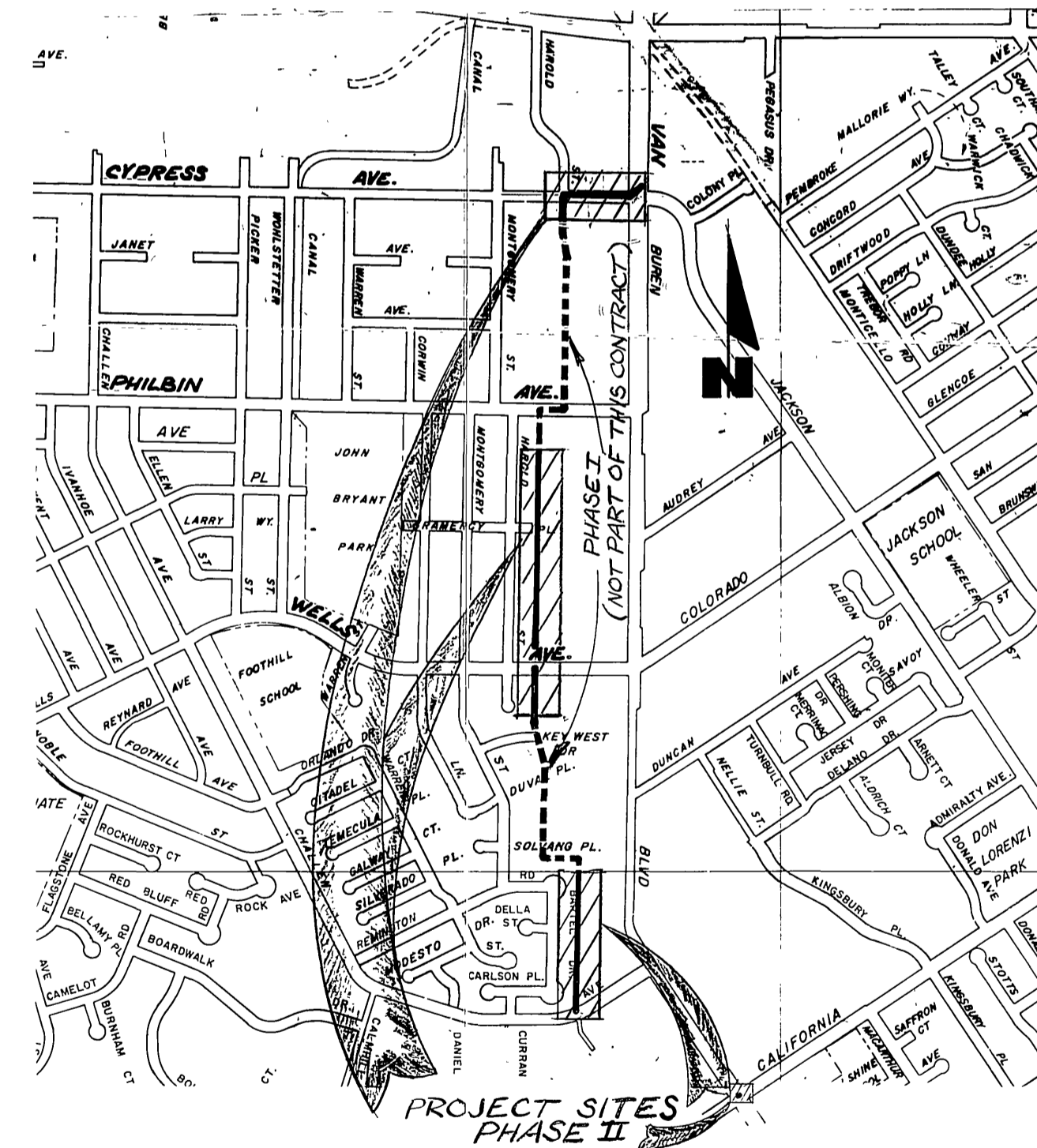
**RECHANNELING OF EXIST. M.H. ON VAN BUREN @ CALIFORNIA**  
SCALE: 1"=4'  
(REFER TO C/R PLAN #S-629 M.H.#8)

**GENERAL CONSTRUCTION NOTES**

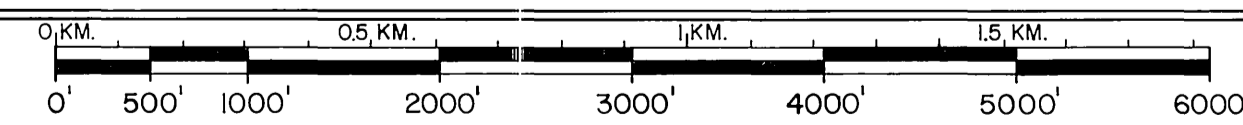
- PIPE SHALL BE 36" VCP, CASE II BEDDING (ALTERNATE I) OR 36" LINED RCP CASE I BEDDING (ALTERNATE II) INSTALLED PER C/R STD. 452, EXCEPT AS NOTED BELOW.
- FOR ALTERNATE II, CASE II BEDDING SHALL BE USED IN LIEU OF CASE I BEDDING AT THE DIRECTION OF THE ENGINEER WHERE ROCK OR UNSTABLE MATERIAL IS ENCOUNTERED IN THE EXCAVATION.
- ALL MANHOLE SHAFTS (EXCEPT FLAT TOP @ 5'-8 1/4") SHALL BE PRECAST CONCRETE (NOT BRICK) AS MANUFACTURED BY INLAND CONCRETE ENTERPRISES (714-682-2833) OR APPROVED EQUAL.
- PHASE I CONSTRUCTION CONSISTS OF INSTALLING THE TRUNK SEWER BETWEEN STATIONS 43+65 & 53+39 AND PROVIDING A TEMPORARY BY-PASS CONNECTION INTO THE EXISTING 8" INCH SEWER AT KEY WEST DR. THIS PHASE IS INTENDED TO PRECEDE A PENDING DEVELOPMENT WITHIN THE BARREL FRONTING VAN BUREN BLVD. AND AT THE IMMEDIATE END OF KEY WEST DR.
- EXISTING UTILITIES SHOWN ON PLANS ARE PLOTTED FROM UTILITY RECORDS. THE CONTRACTOR IS REQUIRED TO TAKE DUE PRECAUTIONARY MEASURES TO LOCATE & PROTECT ALL UTILITIES WHETHER OR NOT SHOWN ON THIS PLAN. IF THE COVER OF A UTILITY IS KNOWN IT IS SHOWN IN THE PROFILE. UTILITIES SHOWN IN THE PROFILE AS  $\rightarrow$  OR  $\rightarrow$  INDICATES THAT THE COVER IS UNKNOWN, BUT THE UTILITY IS NOT EXPECTED TO CONFLICT WITH THE PROPOSED IMPROVEMENTS.
- ALL ELEVATIONS SHOWN ON THE PLAN SHALL BE STAKED IN THE FIELD.
- SEWER LATERAL LOCATIONS ARE APPROXIMATE AND SHALL BE LOCATED IN THE FIELD BY CONTRACTOR WITHIN 1 FT. OF PLAN STATION.
- A BORING WAS MADE BY THE CITY OF RIVERSIDE APPROX. 210' W/LY OF VAN BUREN BLVD. IN THE S/LY PARKWAY OF CYPRESS AVE. AT THE TIME OF BORING THE INSPECTION WELL THE WATER TABLE SURFACE AS SHOWN IN PROFILE WAS DETERMINED AND THE SOIL WAS NOTED TO CONSIST OF SANDY CLAY WITH SOME CALICHE LENSES. IT IS THE RESPONSIBILITY OF THE CONTRACTOR TO INVESTIGATE THE CURRENT GROUND WATER LEVEL AND SOIL CONDITION PRIOR TO PROCEEDING WITH CONSTRUCTION IN ACCORDANCE WITH SEC. 306.1.2.1 OF THE SPECIAL PROVISIONS.

**FLAT-TOP MANHOLE DETAIL**  
STA. 5+81.47 (72" 90° BEND)  
STA. 38+66.12 (60" STR. THRU)  
NO SCALE

FOR M.H. DETAILS NOT SHOWN IN THE DETAILS ABOVE, SEE STD. DWGS. NO. 500 & 500M ATTACHED TO THE PROPOSAL PACKAGE & DELETED NOTES THEREON DO NOT APPLY TO THIS PROJECT.



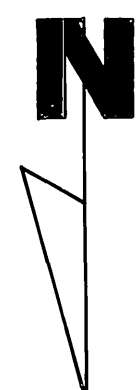
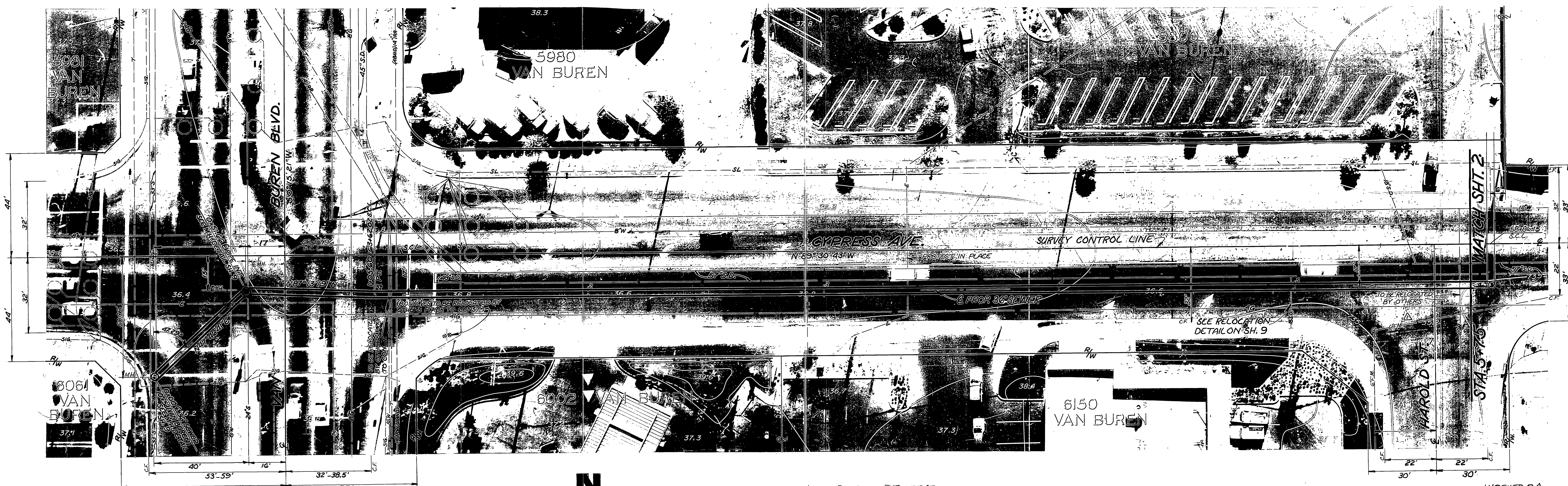
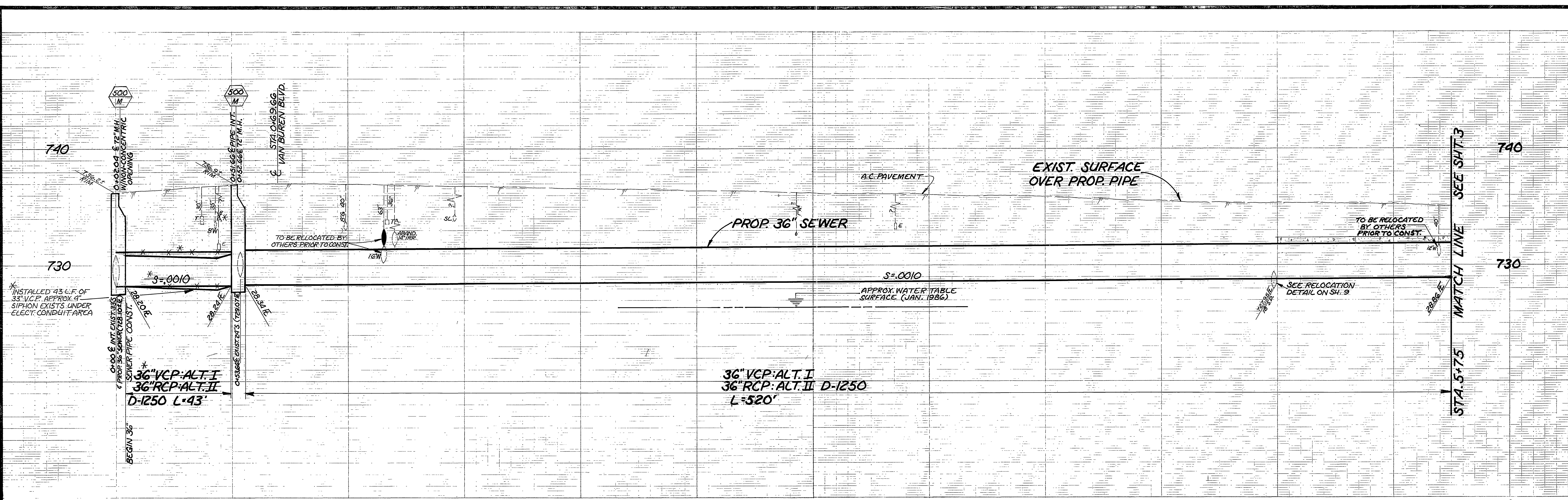
**PROJECT LOCATION PLAN**



SCALE 1" = 1000'

**Underground Service Alert**  
CALL BEFORE YOU DIG  
Call: TOLL FREE  
**1-800-422-4133**  
TWO WORKING DAYS BEFORE YOU DIG

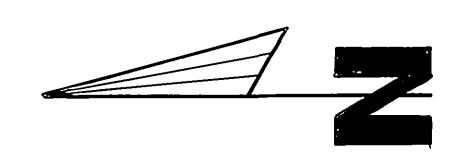
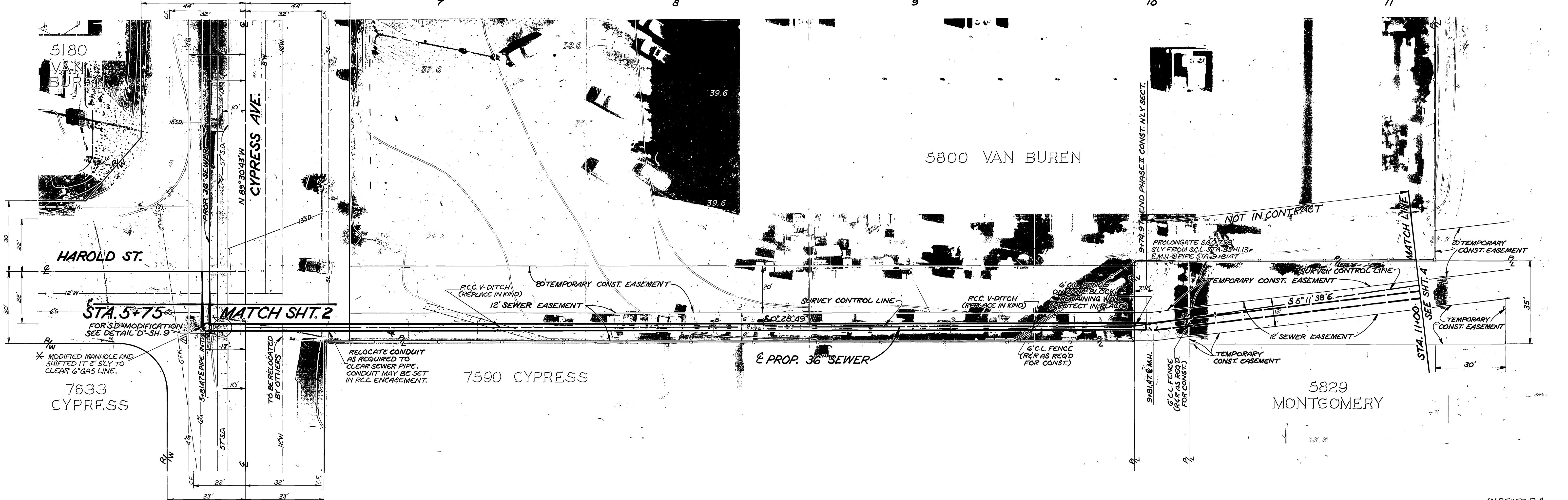
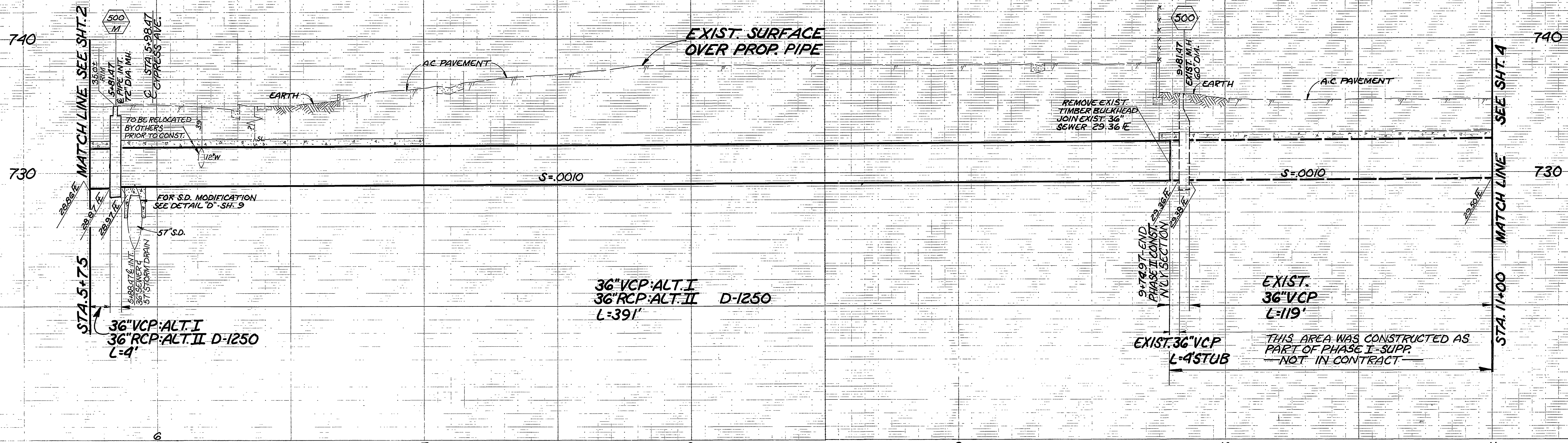
<b>CITY OF RIVERSIDE</b> PUBLIC WORKS DEPARTMENT		INDEXED D.A. ACCOUNT No. 32-577-569 DRAWING NUMBER <b>S-1329</b> SHEET 1 OF 9
APPROVED BY: <i>[Signature]</i> PRINCIPAL ENGINEER DATE: 5/2/85	APPROVED BY: <i>[Signature]</i> PUBLIC WORKS DIRECTOR DATE: June 3, 1985	DESIGNED BY: <i>[Signature]</i> DRAWN BY: <i>[Signature]</i> CHECKED BY: <i>[Signature]</i>



* AS BUILT RVZ T-13-87		INDEXED D.A.	
DELETED FORCE MAIN RECONST. <i>file 5/4/86</i>		ACCOUNT NO. 32-377-569	
<b>CITY OF RIVERSIDE</b> PUBLIC WORKS DEPARTMENT		<b>MEGGINSON TRUNK</b> <b>SEWER EXTENSION</b> <b>VAN BUREN BLVD. TO CHALLENGE AVE.</b>	
		S-1329	
APPROVED BY	<i>file 4/1/86</i>	APPROVED BY	<i>William S. Gardner</i>
PRINCIPAL ENGINEER		PUBLIC WORKS DIRECTOR	
TRAFFIC DIVISION			
CHIEF P. W. INSPECTOR	<i>file 3/4/86</i>	DATE	4-2-86
DESIGNED BY <i>CH</i>	DRAWN BY <i>RVZ</i>	CHECKED BY <i>RCM</i>	FILE NO.

HORIZ. SCALE: 1" = 20' VERT. SCALE: 1" = 4'

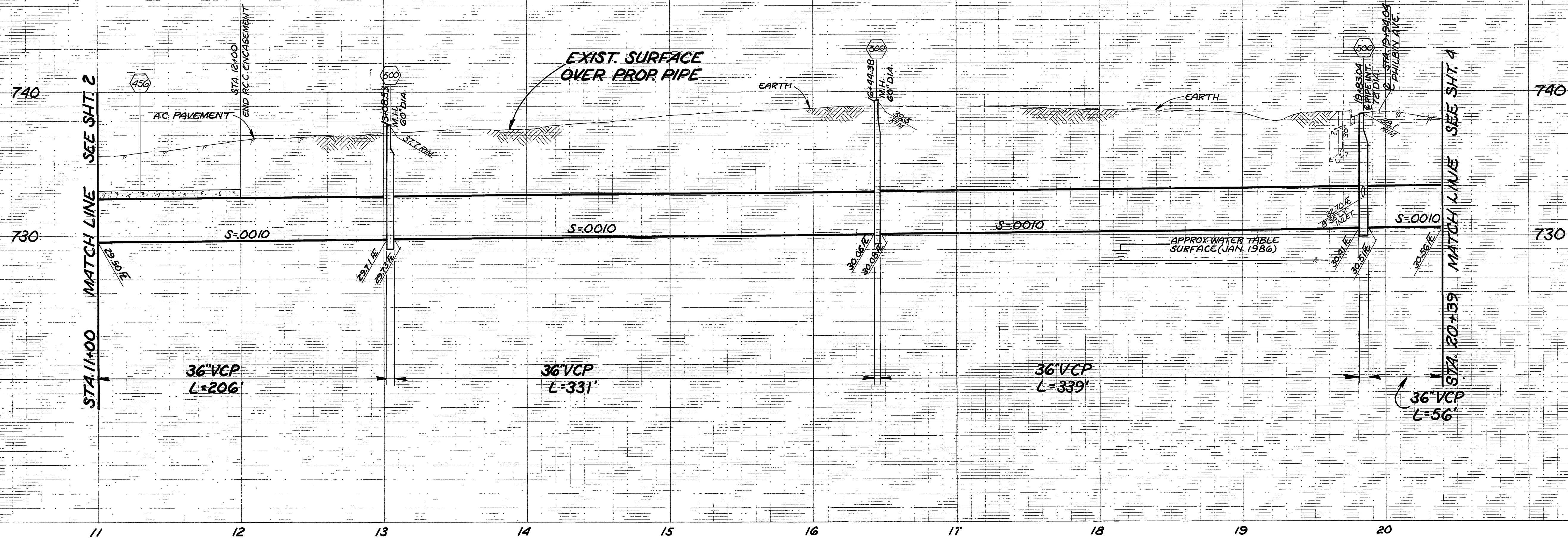
SHEET 2 OF 9



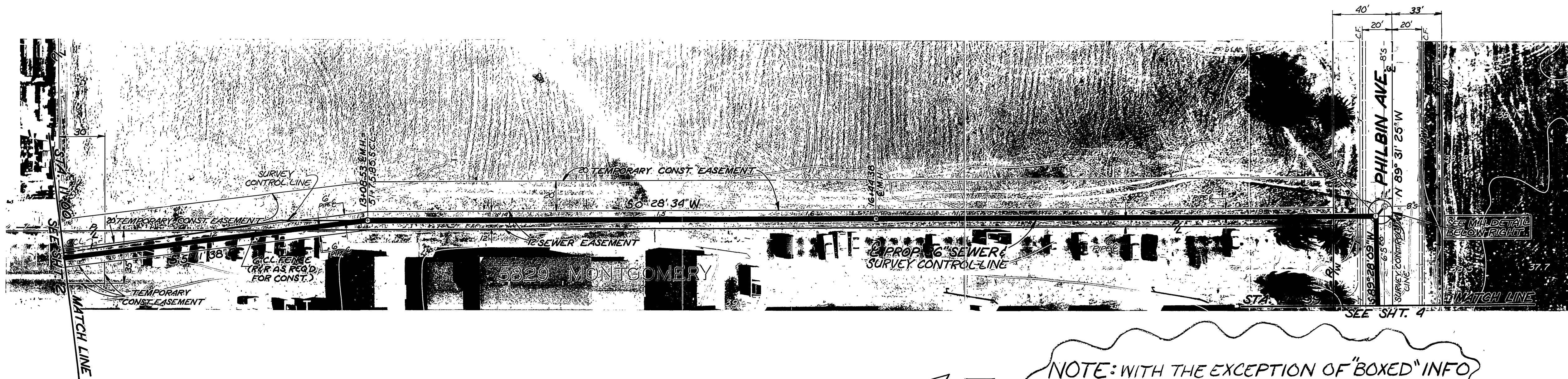
\* AS BUILT RVE 7-13-87  
 DELETED FORCE MAIN RECONST. *[Signature]* 5/6/88

<b>CITY OF RIVERSIDE</b> PUBLIC WORKS DEPARTMENT		<b>MEGGINSON TRUNK</b> <b>SEWER EXTENSION</b> VAN BUREN BLVD. TO CHALLENGE AVE.	
APPROVED BY PRINCIPAL ENGINEER <i>[Signature]</i> 4/1/86	APPROVED BY PUBLIC WORKS DIRECTOR <i>[Signature]</i>	INDEXED D.A. ACCOUNT NO. 32-577-569	<b>S-1329</b>
DESIGNED BY <i>[Signature]</i> DRAWN BY <i>[Signature]</i> CHECKED BY <i>[Signature]</i>	DATE 4-2-86	SHEET 3 OF 9	FILE NO.

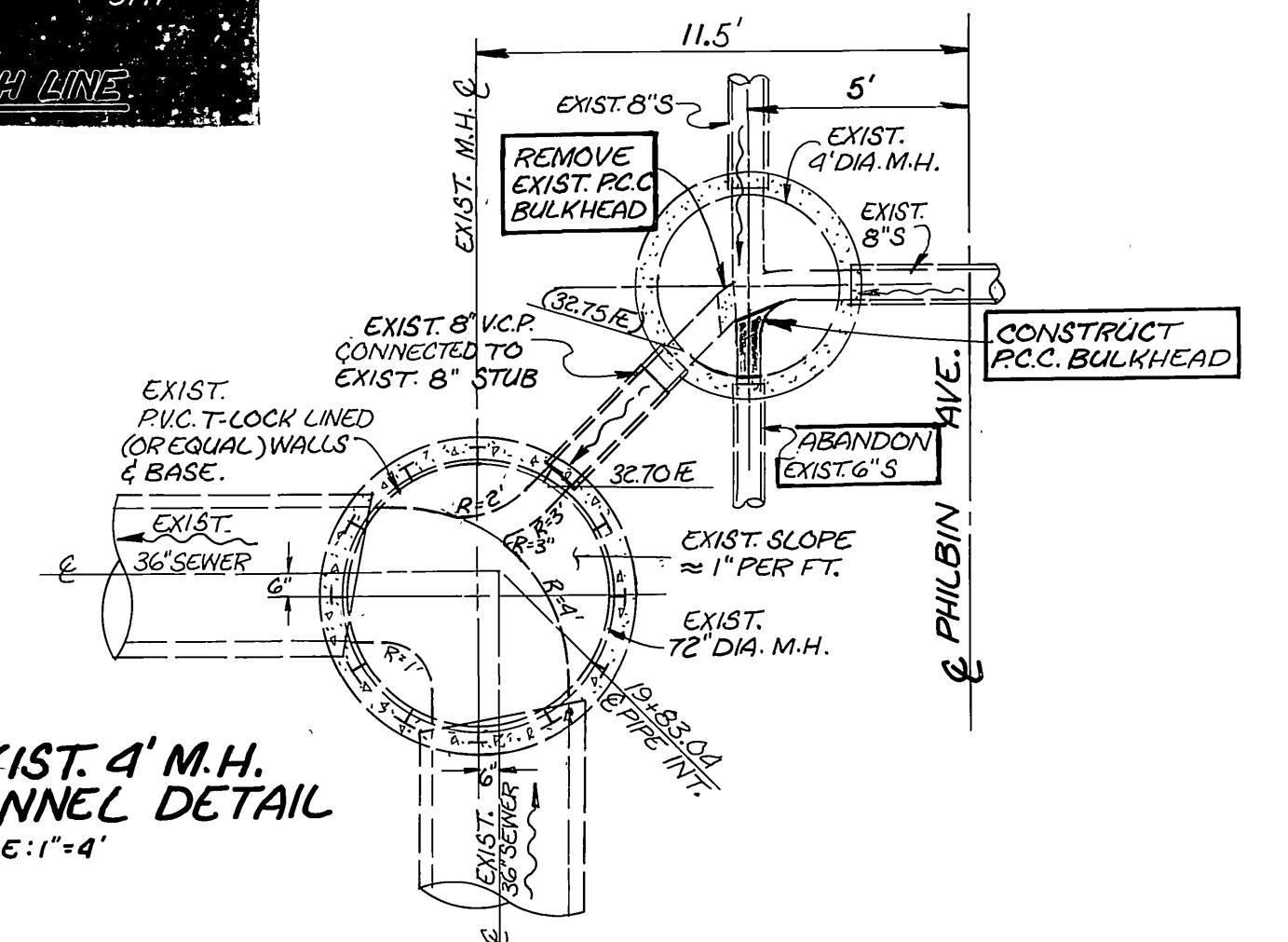
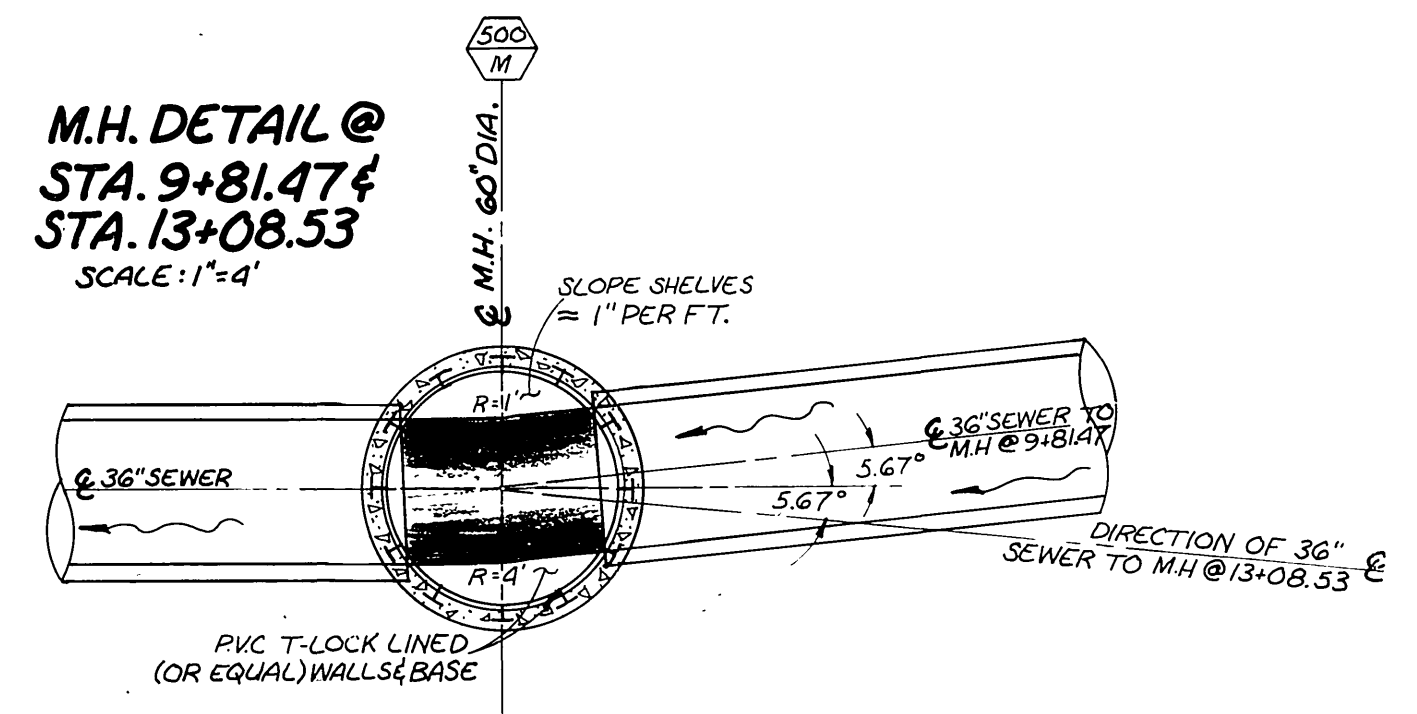
HORIZ. SCALE: 1" = 20'  
 VERT. SCALE: 1" = 4'



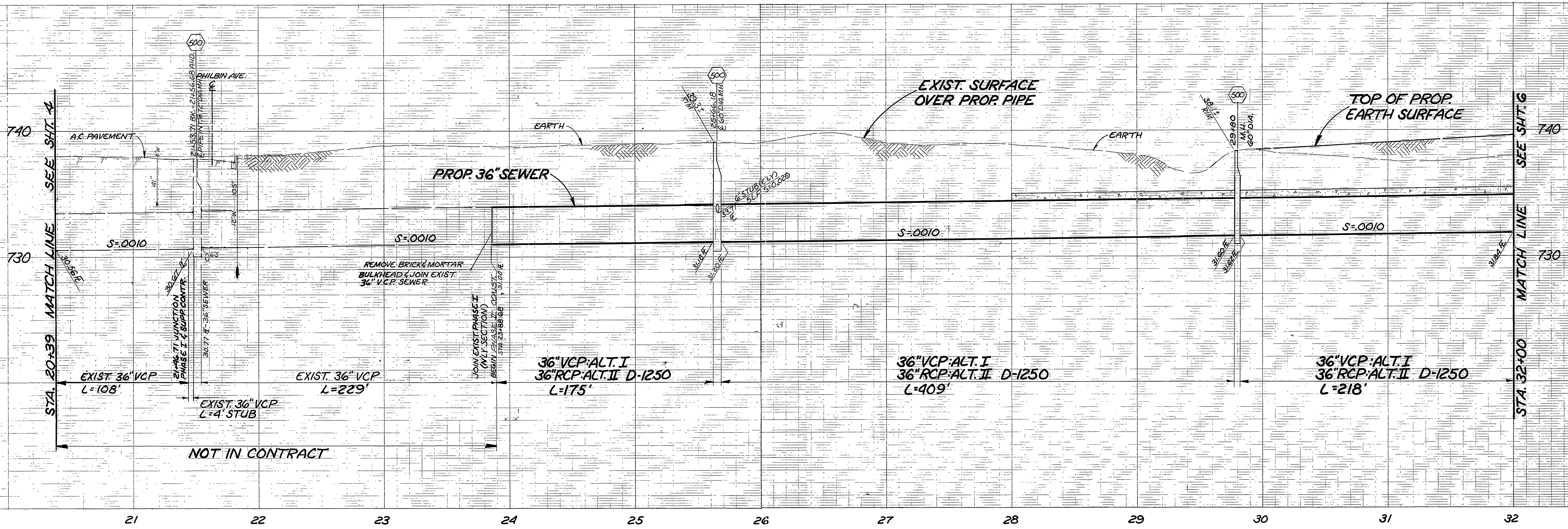
TBM SET PK NAIL IN LEAD ON ELY CB OF CHALLENGER AVE. 128' SLY. OF VAN BUREN BLVD. BASIS OF BEARING - CHALLENGER AVE. BEING N 55° 16' 40\"/>



NOTE: WITH THE EXCEPTION OF "BOXED" INFO AT RIGHT, THE CONSTRUCTION SHOWN ON THIS SHEET WAS COMPLETED IN PHASE I SUPPL. AND IS NOT IN THIS CONTRACT. THIS SHEET IS FOR REFERENCE ONLY.



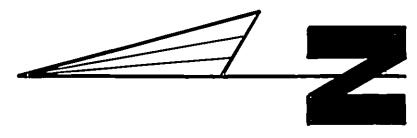
<b>CITY OF RIVERSIDE</b> PUBLIC WORKS DEPARTMENT		<b>MEGGINSON TRUNK</b> <b>SEWER EXTENSION</b> VAN BUREN BLVD. TO CHALLENGER AVE.		INDEXED D.A. ACCOUNT NO. 32-577-569
APPROVED BY PRINCIPAL ENGINEER PARK DEPARTMENT TRAFFIC DIVISION CHIEF P.W. INSPECTOR SURVEYOR	APPROVED BY PUBLIC WORKS DIRECTOR	DATE 12.20.85	SHEET 4 OF 9	FILE NO.
DESIGNED BY: [Signature] DRAWN BY: RVZ CHECKED BY: [Signature]		HORIZ. SCALE: 1" = 40' VERT. SCALE: 1" = 4'		



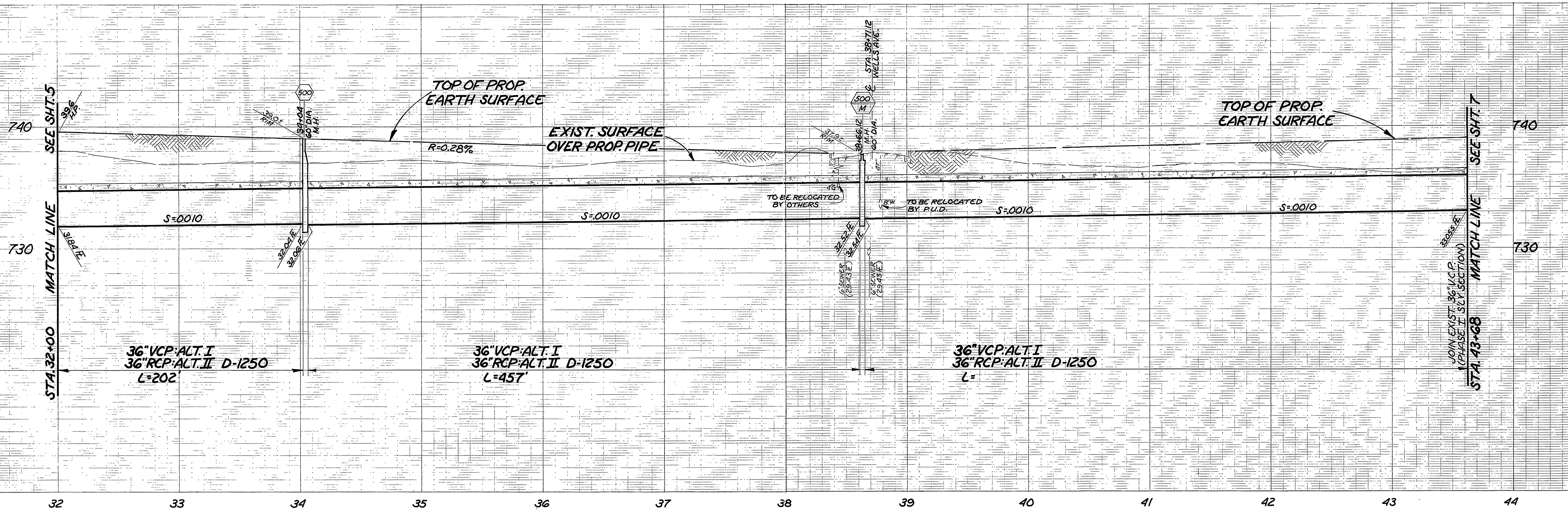
THIS AREA CONSTRUCTED AS PART OF PHASE I NOT IN THIS CONTRACT

NOTE: OVERHEAD ELECTRIC LINES EXIST ADJACENT TO WLY SIDE OF 12\"/>

JOIN EXIST PHASE I (ONLY SECTION) BEGIN PHASE II CONSTRUCTION 23+88.68



<b>CITY OF RIVERSIDE</b> PUBLIC WORKS DEPARTMENT		<b>MEGGINSON TRUNK SEWER EXTENSION</b> VAN BUREN BLVD. TO CHALLENGE AVE.		INDEXED P.A. ACCOUNT NO. 32-377-669 <b>S-1329</b> SHEET <b>5</b> OF <b>9</b> FILE NO.
APPROVED BY PRINCIPAL ENGINEER PARK DEPARTMENT TRAFFIC DIVISION CHIEF P.W. INSPECTOR SURVEYOR	DATE <b>4-2-86</b>	APPROVED BY <b>William D. Harwin</b> PUBLIC WORKS DIRECTOR	DATE <b>4-2-86</b>	HORIZ. SCALE: 1" = 40' VERT. SCALE: 1" = 4'
DESIGNED BY <b>J.H.</b> DRAWN BY <b>R.V.Z.</b> CHECKED BY <b>R.C.M.</b>	MARK REVISIONS APPR. DATE	MARK REVISIONS APPR. DATE	MARK REVISIONS APPR. DATE	MARK REVISIONS APPR. DATE



NOTE: OVERHEAD ELECTRICAL EXIST. ADJACENT TO WLY SIDE OF 12' SEWER EASEMENT FROM PHILBIN AVE. TO APPROX. 200' SLY OF E WELLS AVE. EXIST. FENCES PARALLEL TO WLY SIDE OF 12' SEWER ESMT. ARE TO BE PROTECTED IN PLACE.

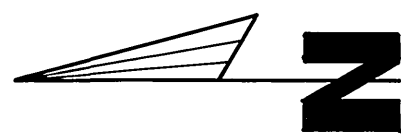
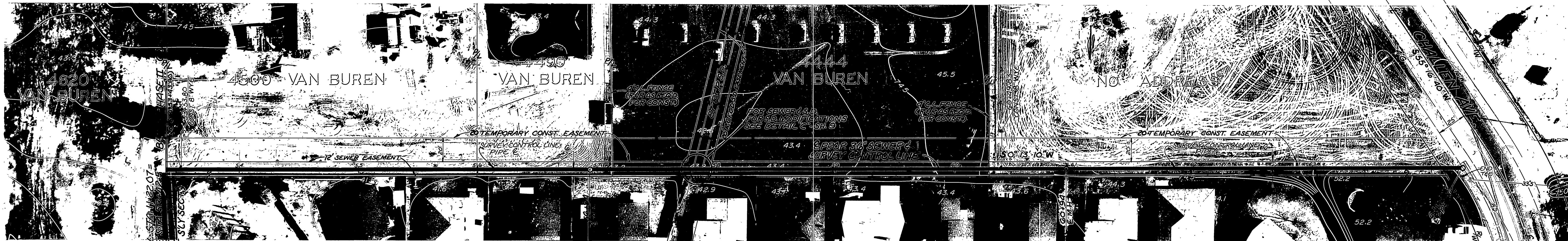
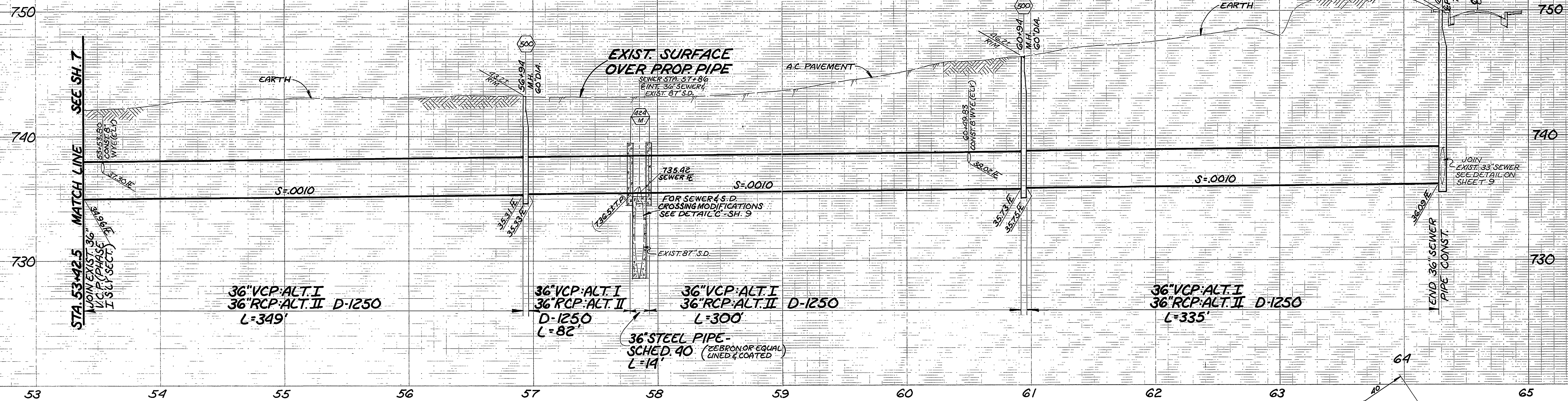


\* RELOCATED CO. 8 ELY OF 36\"/>

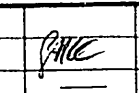
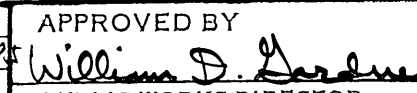
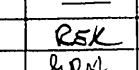
\* AS BUILT RVZ 7-13-87

<b>CITY OF RIVERSIDE</b> PUBLIC WORKS DEPARTMENT		<b>MEGGINSON TRUNK SEWER EXTENSION</b> VAN BUREN BLVD. TO CHALLENGE AVE.		INDEXED D.A. ACCOUNT NO. 32-577-569
APPROVED BY PRINCIPAL ENGINEER PARK DEPARTMENT TRAFFIC DIVISION CHIEF P. W. INSPECTOR SURVEYOR	[Signature] 4/18/86	APPROVED BY PUBLIC WORKS DIRECTOR [Signature]	DATE 4-2-86	SHEET <b>6</b> OF <b>9</b>
DESIGNED BY: J.A. DRAWN BY: RVZ CHECKED BY: J.W.	DATE: 4/18/86	HORIZ. SCALE: 1" = 40' VERT. SCALE: 1" = 4'	FILE NO.	

**MISSING SHEET**

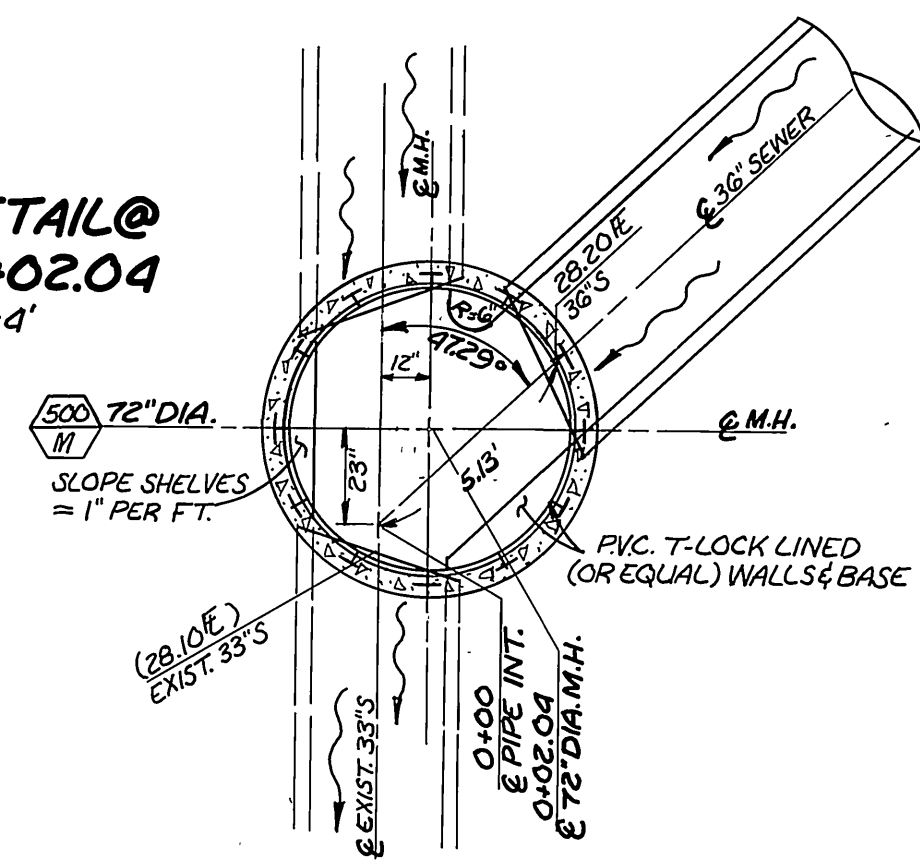


NOTE: EXIST. BLOCK WALL ALONG W'LY SIDE OF 12' SEWER EASEMENT TO BE PROTECTED IN PLACE. EXIST. A.C. PAVEMENT TO BE SAWCUT ALONG 12' SEWER EASEMENT LINE, REMOVED & REPLACED FOR FULL WIDTH BETWEEN SAWCUT & BLOCK WALL. WHEREVER ANY CONSTRUCTION DAMAGE MAY OCCUR TO PAVEMENT WITHIN THE 30' TEMP. CONST. EASEMENT THE DAMAGED AREA SHALL BE SAWCUT, REMOVED & REPLACED WITH 2 1/2" A.C. OVER 95% COMPACTED NATIVE SOIL. AFTER MAKING ALL NECESSARY PAVEMENT REPAIRS, THE FULL 30' WIDTH OF BOTH EASEMENTS SHALL BE SLURRY SEALED. ALL OTHER SURFACE IMPROVEMENTS (I.E. FENCE, CURB, ETC.) SHALL BE RESTORED TO THEIR ORIGINAL LOCATION AND CONDITION.

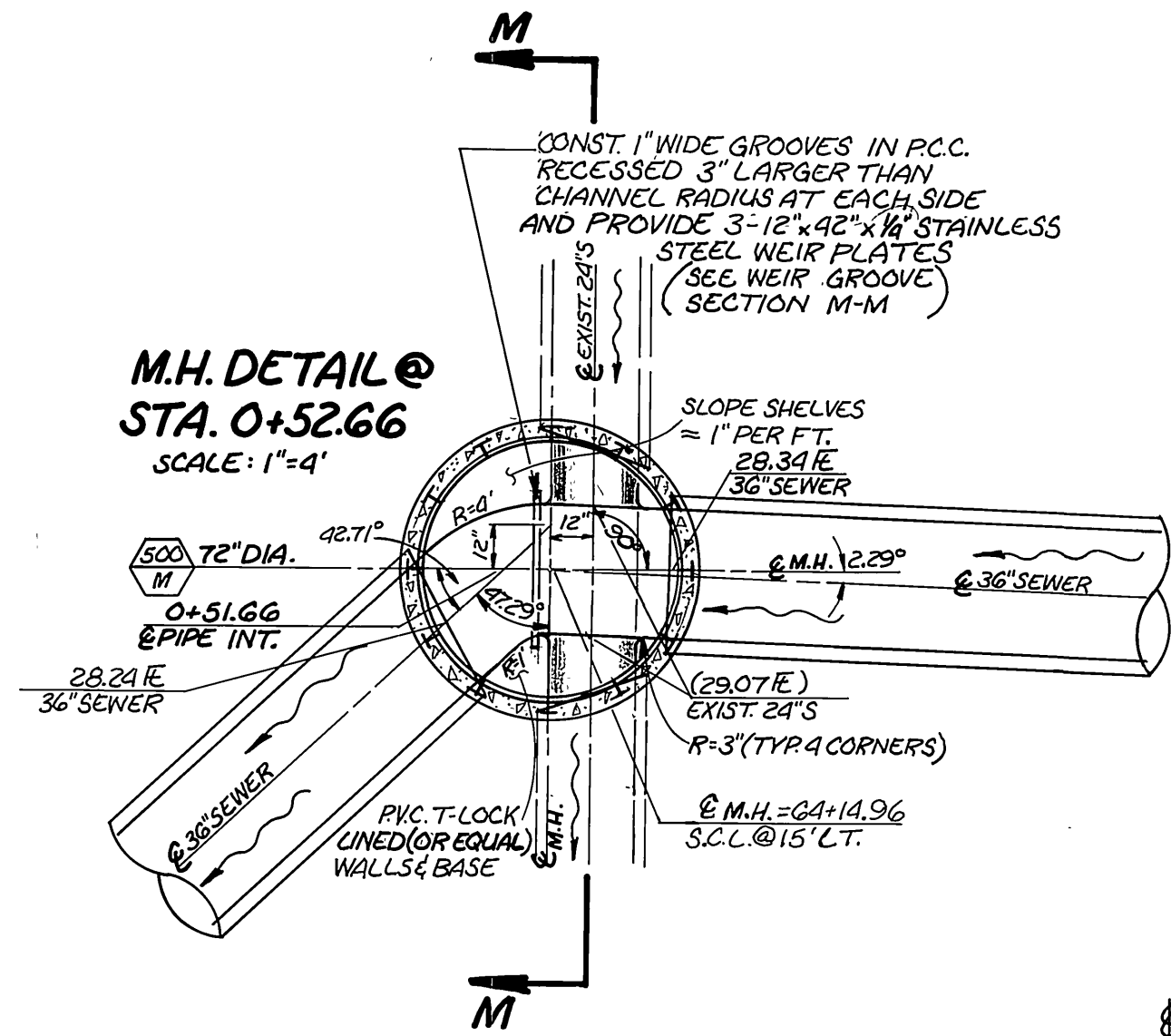
<b>CITY OF RIVERSIDE</b> PUBLIC WORKS DEPARTMENT		<b>MEGGINSON TRUNK</b> <b>SEWER EXTENSION</b> VAN BUREN BLVD. TO CHALLEN AVE.		INDEXED D.A. ACCOUNT NO. 32-577-569
APPROVED BY 		APPROVED BY 		<b>S-1329</b>
CHIEF P. W. INSPECTOR 		DATE 11-18-85		SHEET <b>8</b> OF <b>9</b>
DESIGNED BY <i>J.H.</i> DRAWN BY <i>RVZ</i> CHECKED BY <i>ACM</i>		HORIZ. SCALE: 1" = 40' VERT. SCALE: 1" = 4'		FILE NO.



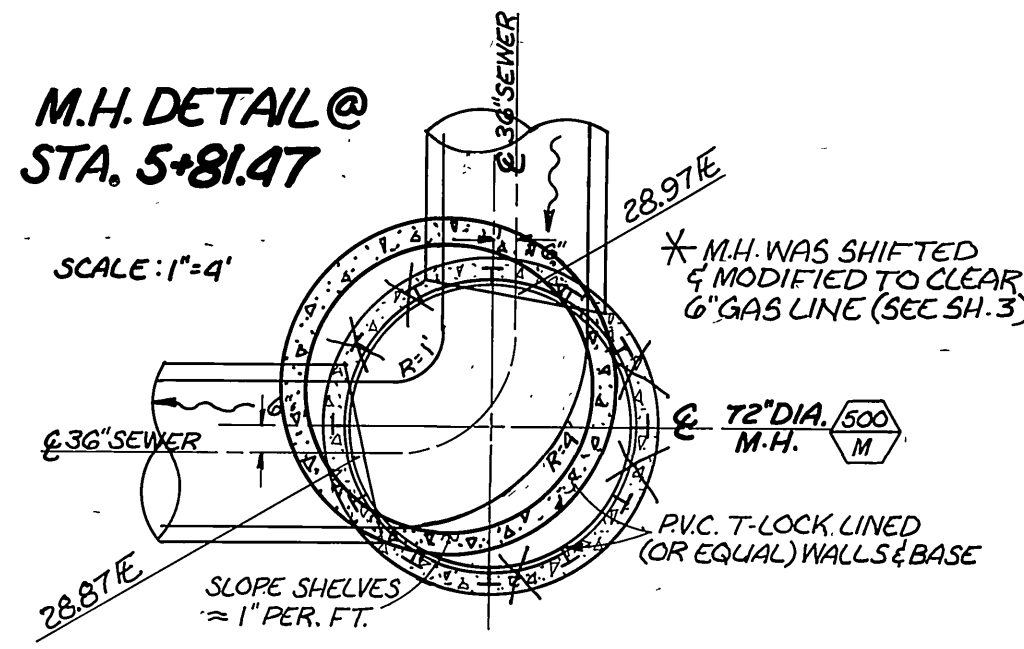
M.H. DETAIL @ STA. 0+02.04  
SCALE: 1"=4'



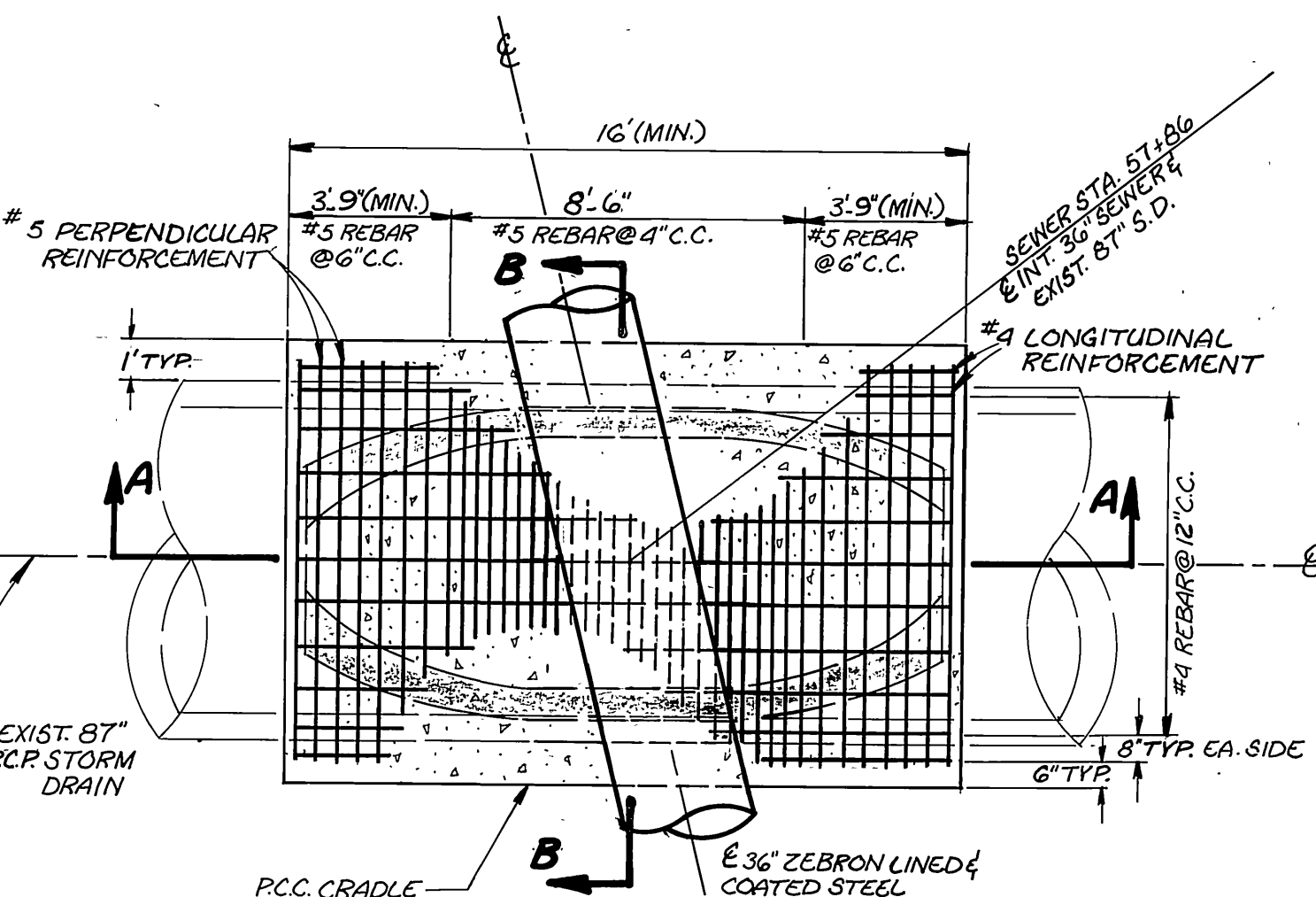
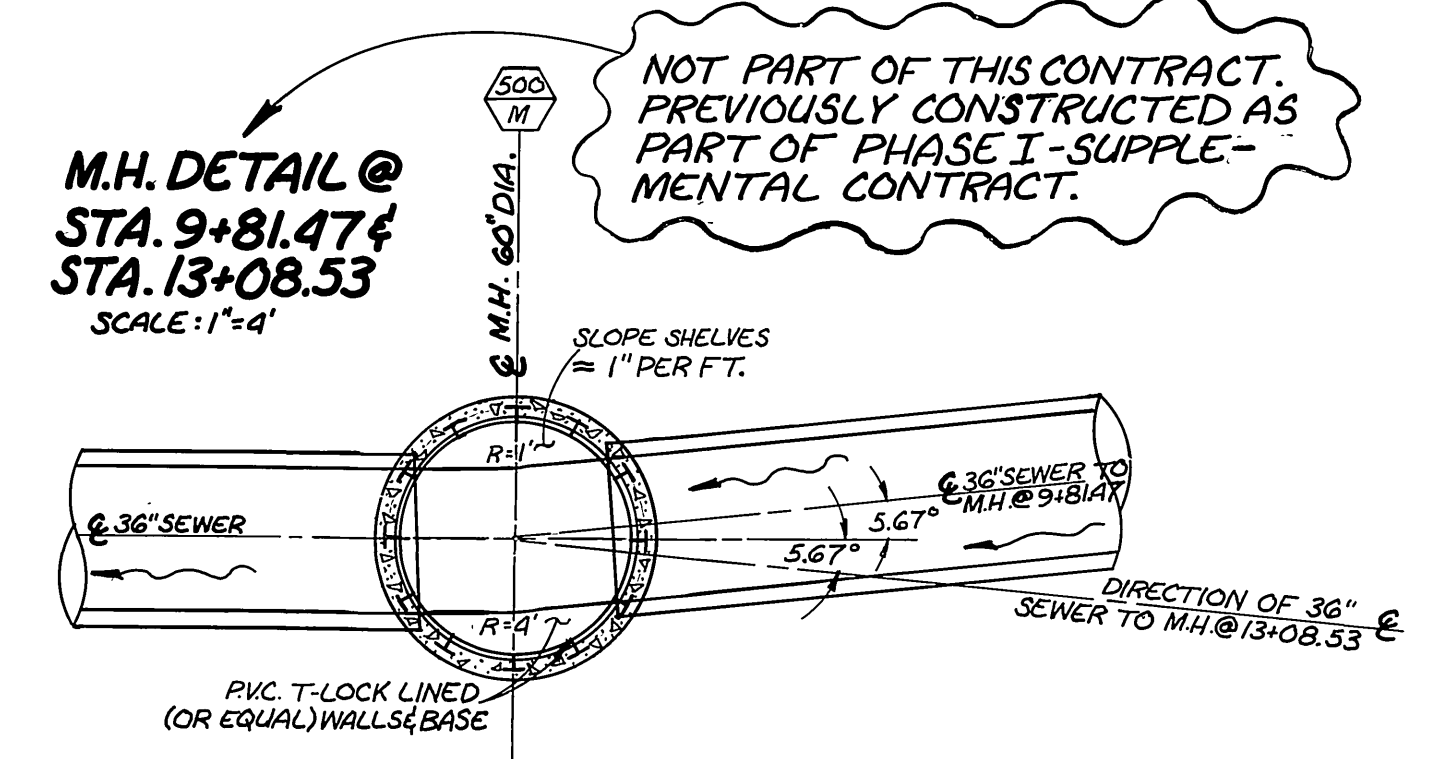
M.H. DETAIL @ STA. 0+52.66  
SCALE: 1"=4'



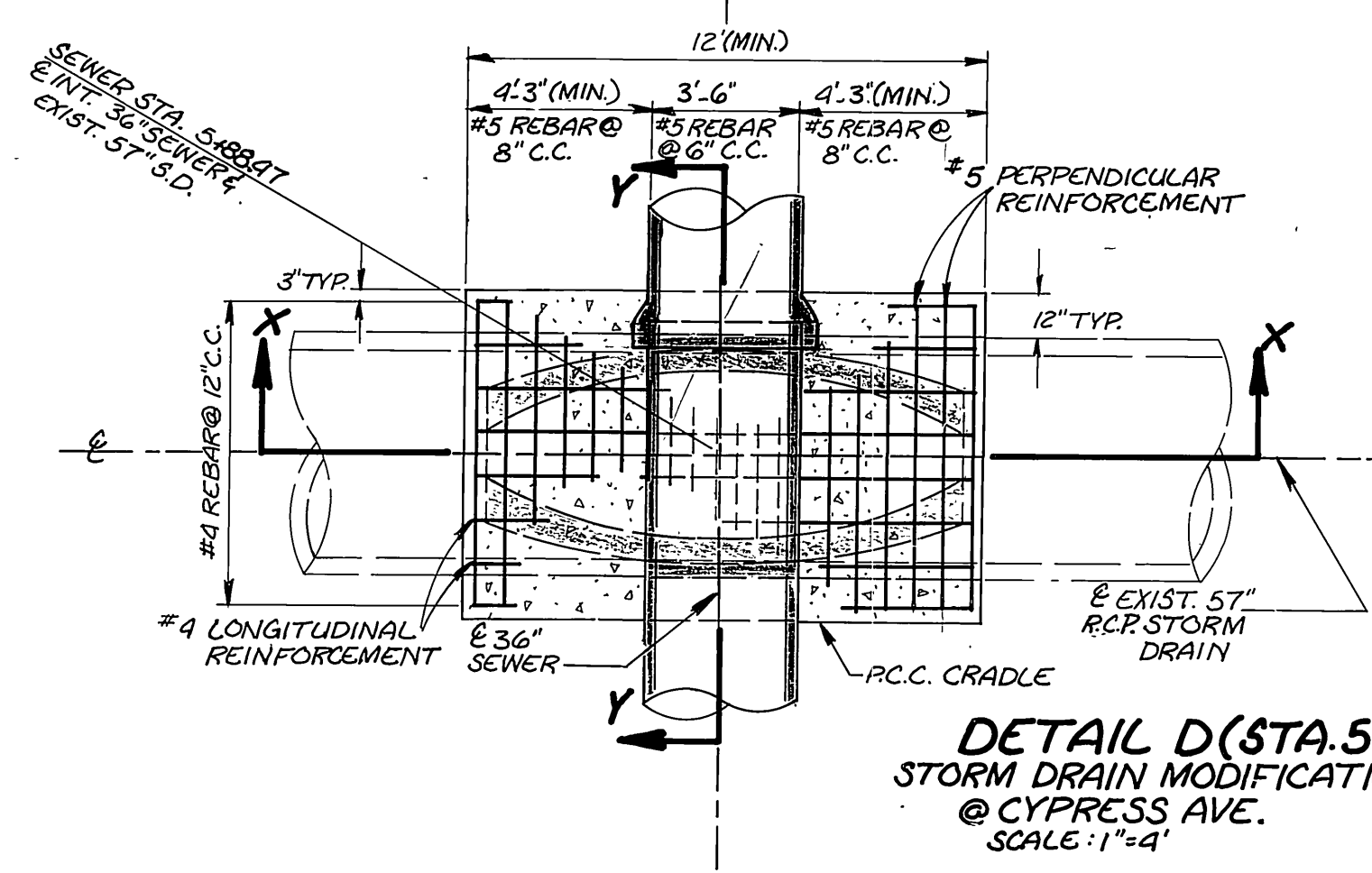
M.H. DETAIL @ STA. 5+81.47  
SCALE: 1"=4'



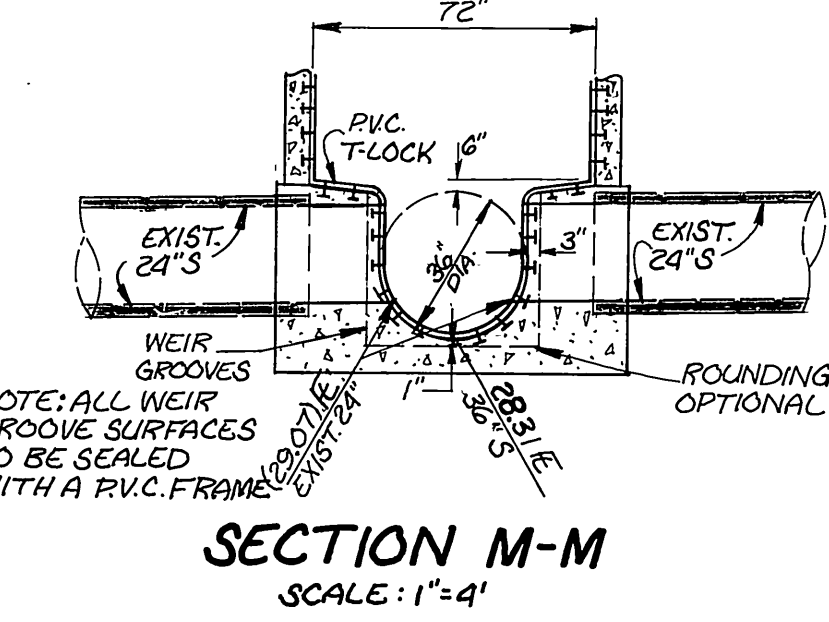
M.H. DETAIL @ STA. 9+81.47 & STA. 13+08.53  
SCALE: 1"=4'



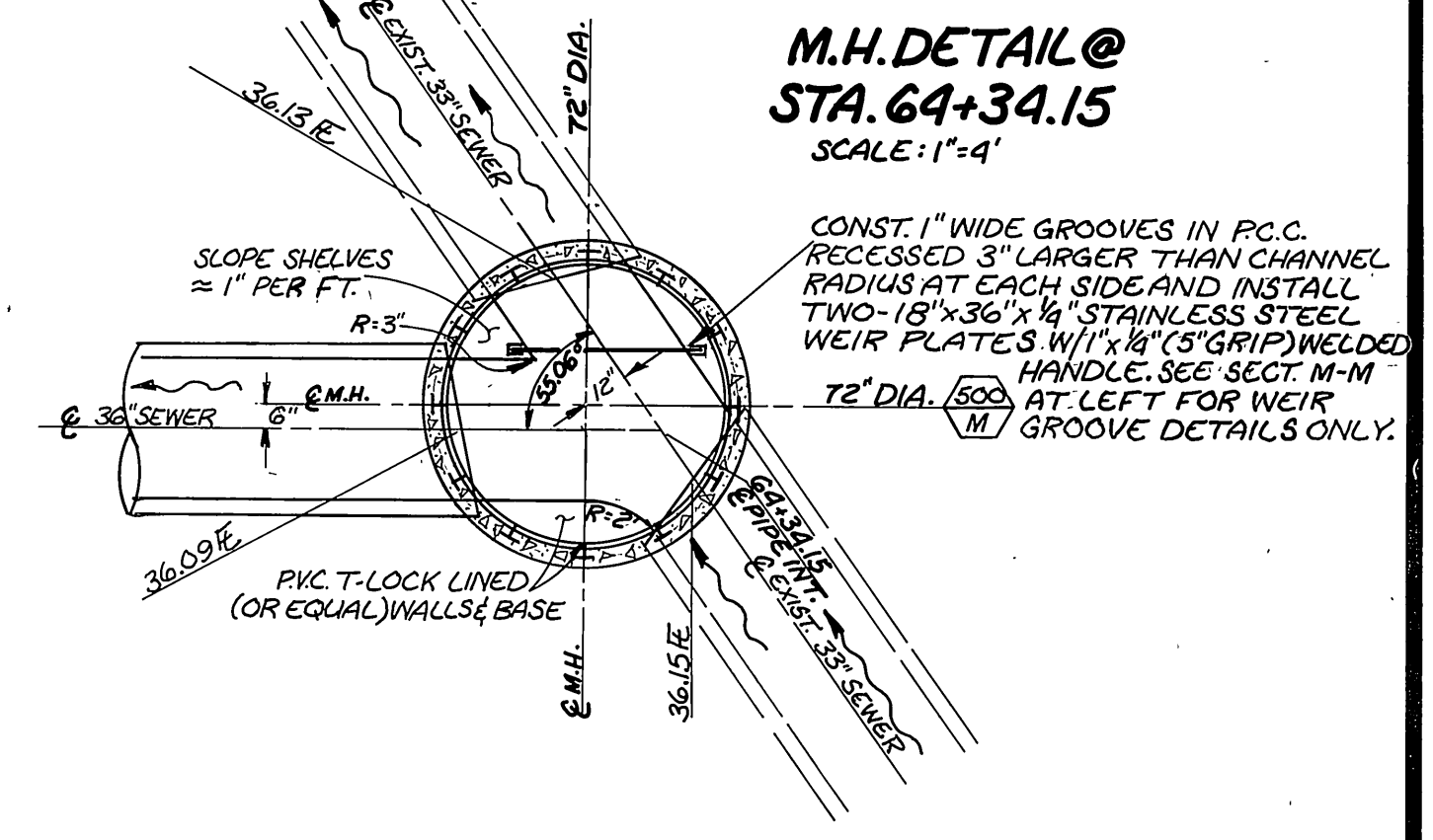
DETAIL C (STA. 57+86)  
STORM DRAIN MODIFICATION  
SCALE: 1"=4'



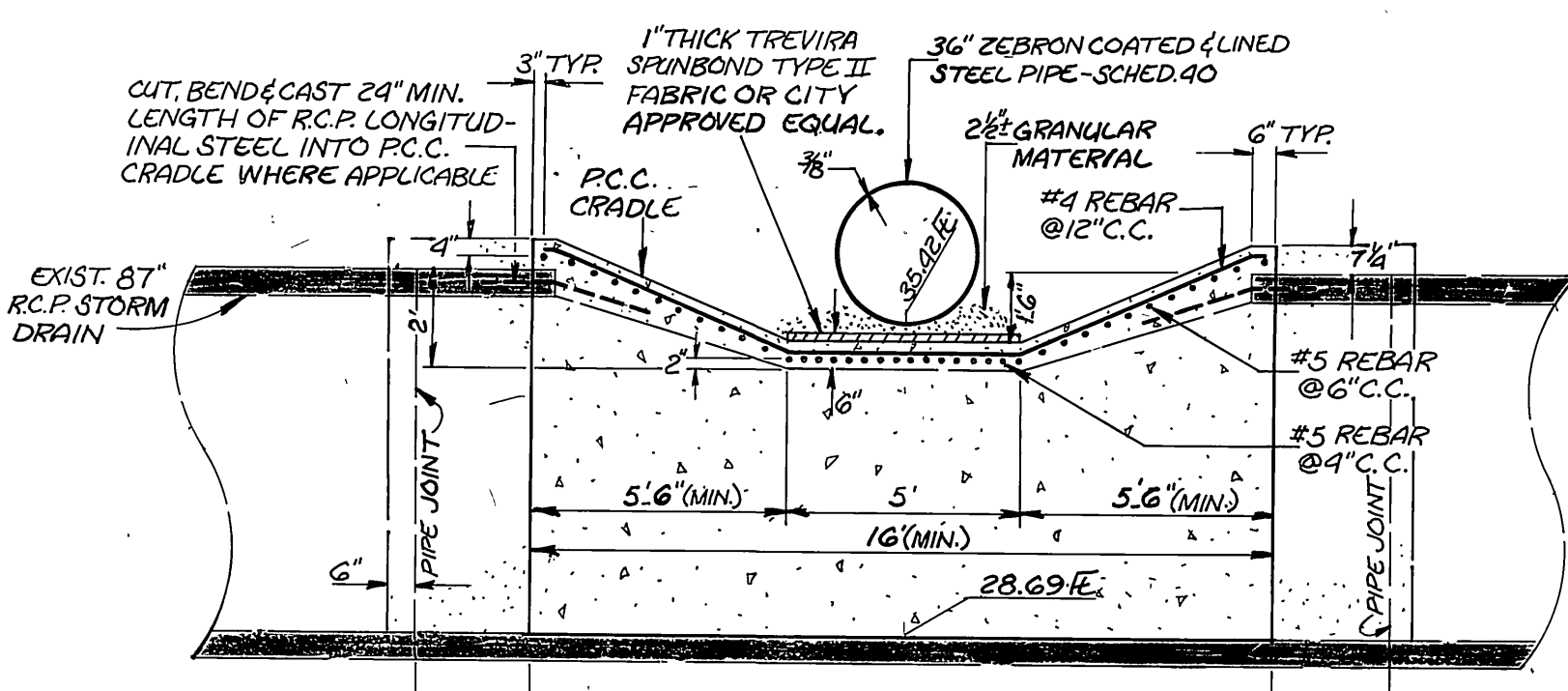
DETAIL D (STA. 5+88.47)  
STORM DRAIN MODIFICATION  
@ CYPRESS AVE.  
SCALE: 1"=4'



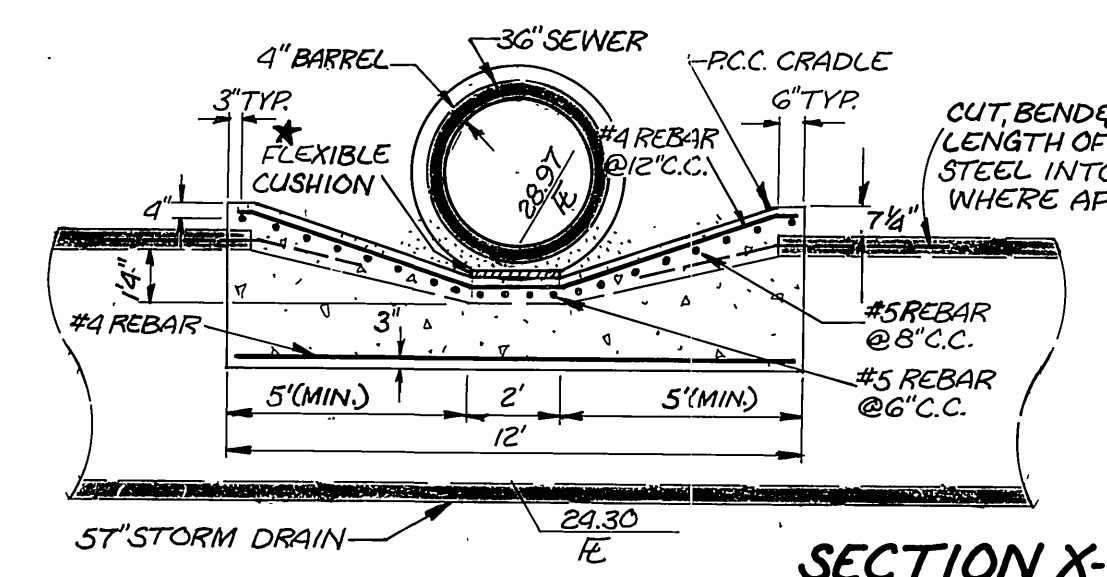
SECTION M-M  
SCALE: 1"=4'



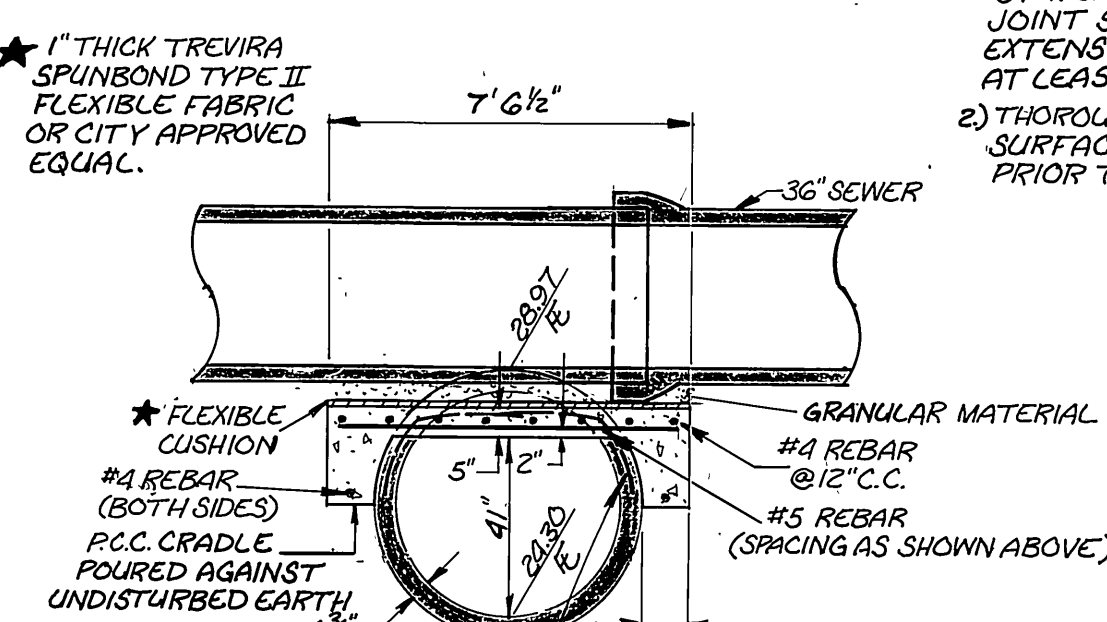
M.H. DETAIL @ STA. 64+34.15  
SCALE: 1"=4'



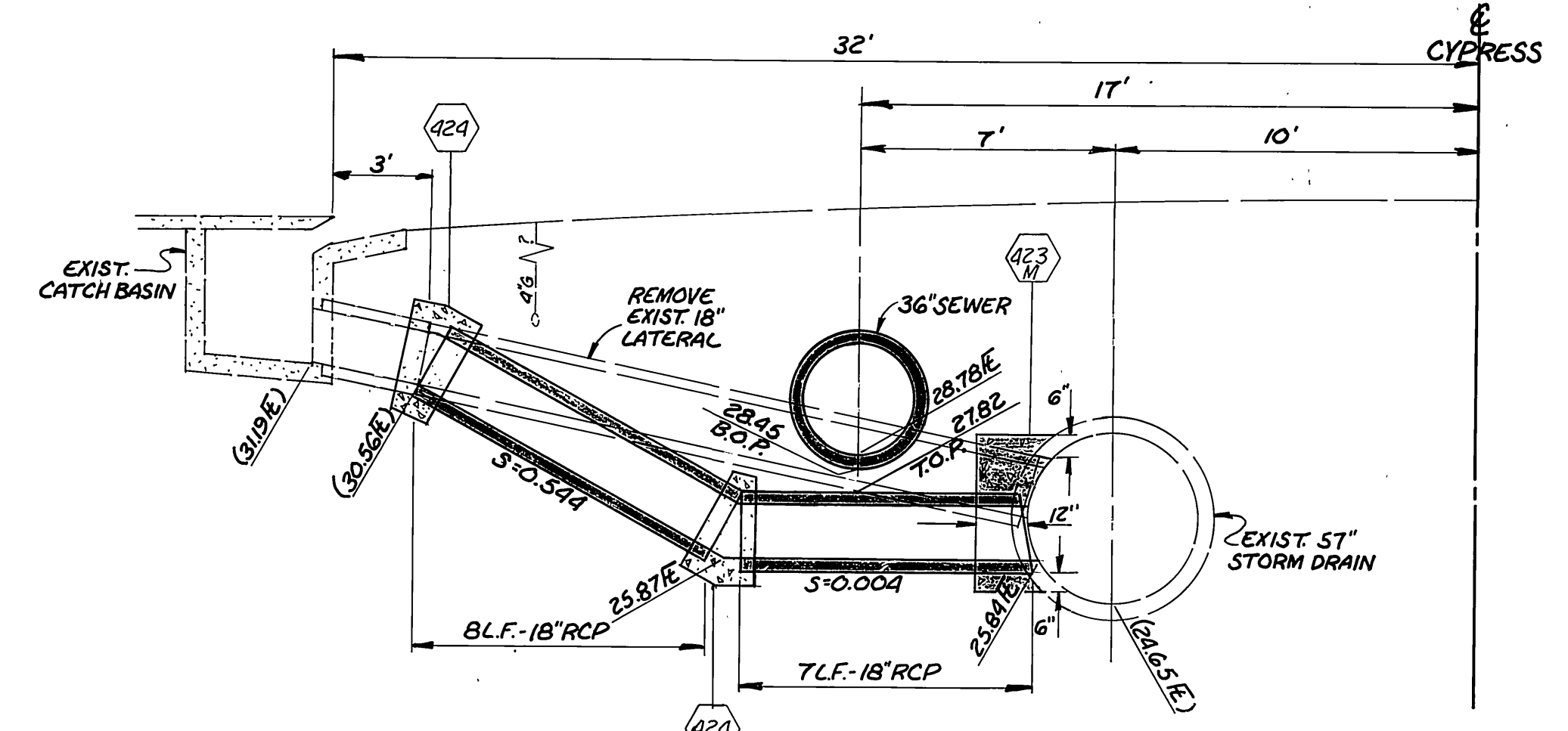
SECTION A-A  
SCALE: 1"=4'



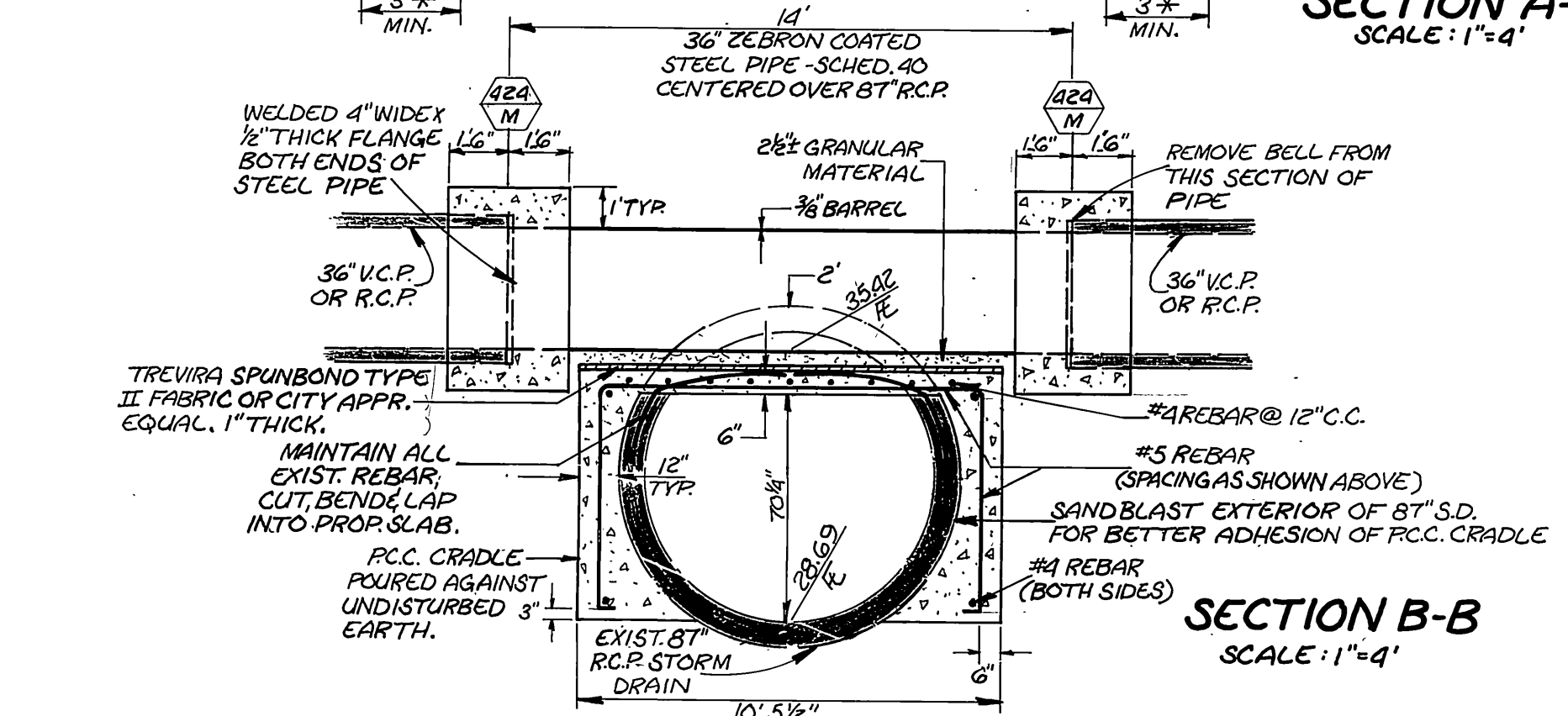
SECTION X-X  
SCALE: 1"=4'



SECTION Y-Y  
SCALE: 1"=4'



18" S.D. LATERAL @ CYPRESS AVE.  
STA. 5+00 ±  
SCALE: 1"=4'



SECTION B-B  
SCALE: 1"=4'

\* AS BUILT RVZ 7-13-87

MARK	REVISIONS	APPR. DATE
Δ	DELETED FORCE MAIN RECONST.	1/12/88

**CITY OF RIVERSIDE**  
PUBLIC WORKS DEPARTMENT

APPROVED BY: *[Signature]* DATE: 11/18/85  
 PRINCIPAL ENGINEER: *[Signature]* DATE: 11/18/85  
 CHIEF P.W. INSPECTOR: *[Signature]* DATE: 11/18/85

DETAILS FOR MEGGINSON TRUNK SEWER EXTENSION

HORIZ. SCALE: AS SHOWN VERT. SCALE: AS SHOWN

INDEXED - D.A.  
ACCOUNT NO. 32-577-569  
S-1329  
SHEET 9 OF 9