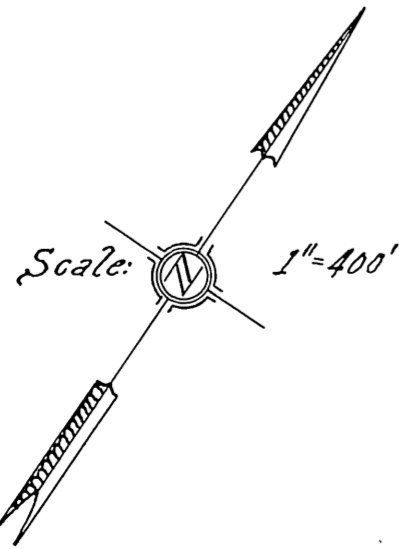
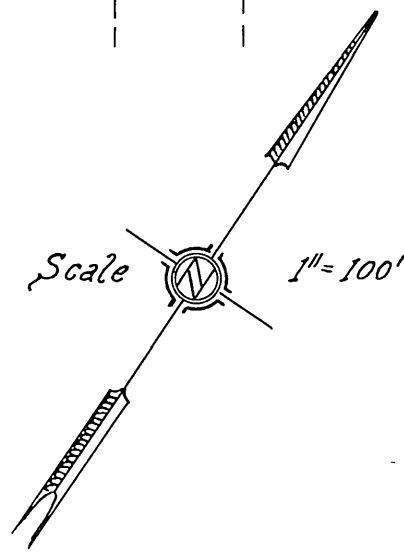
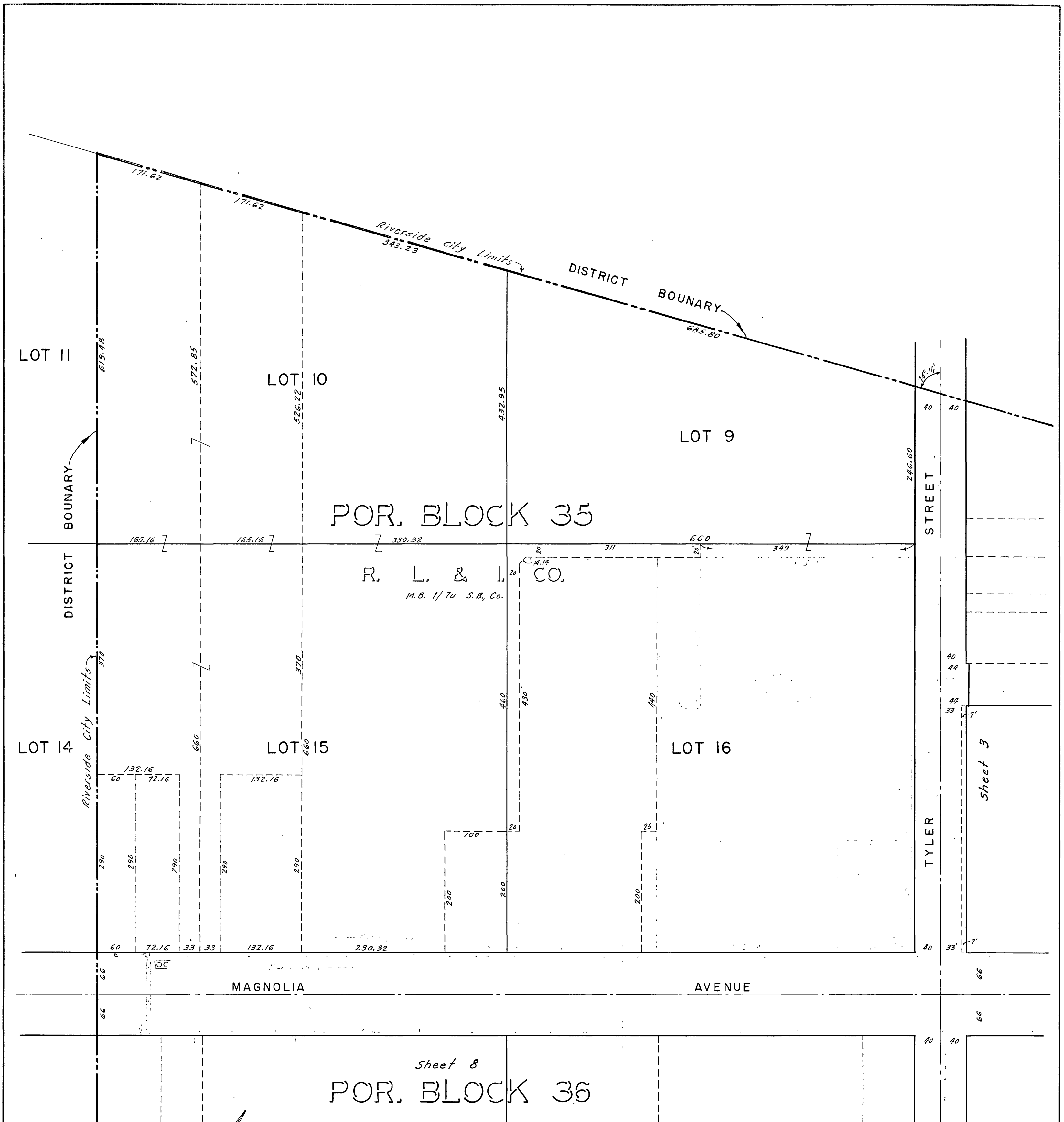




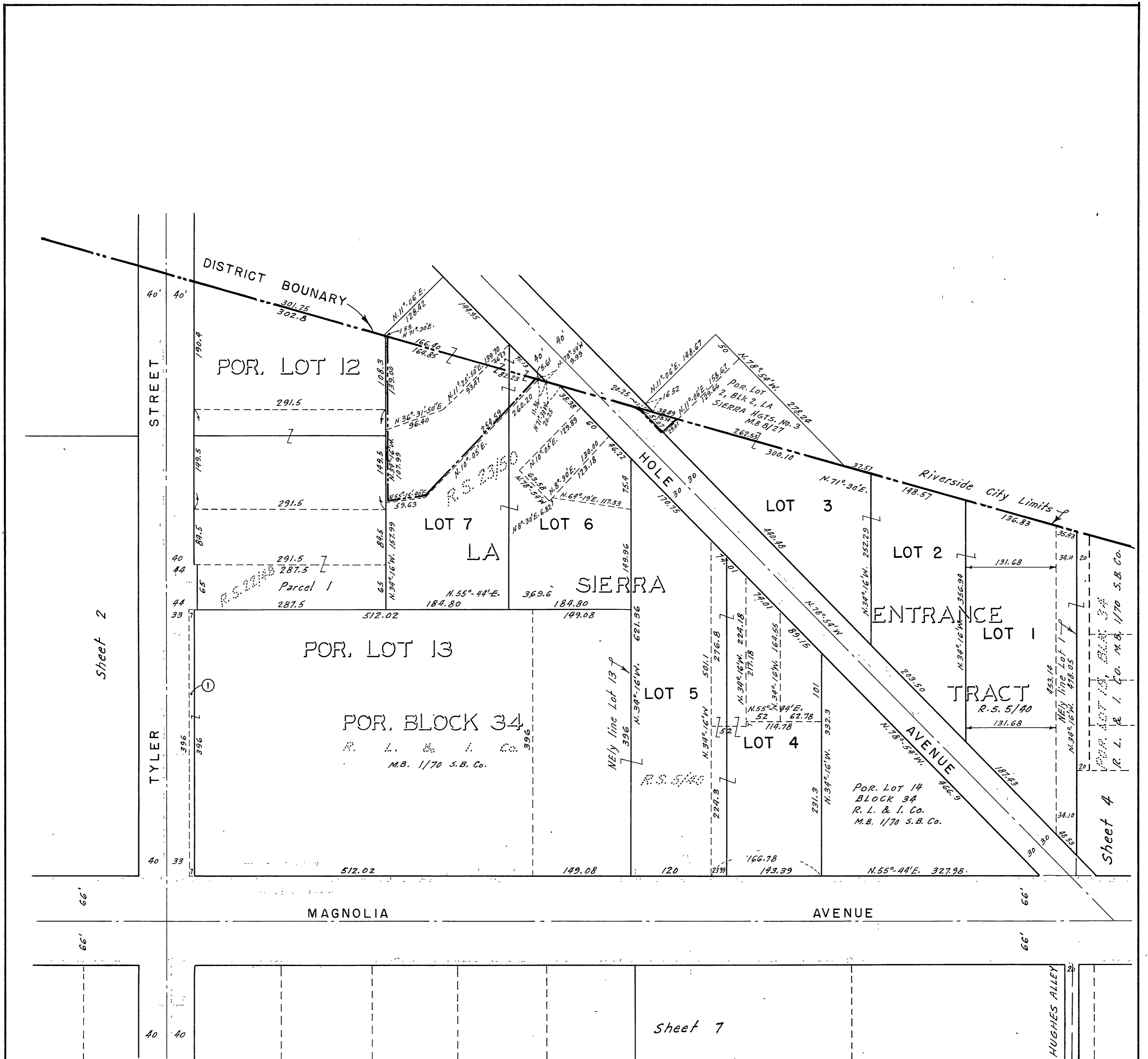
# INDEX MAP



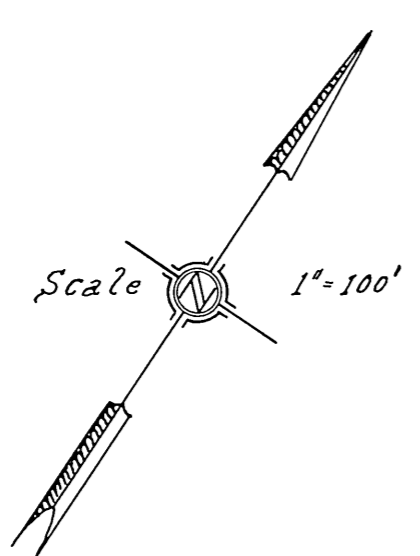
REVISIONS			CITY OF RIVERSIDE CALIFORNIA DEPARTMENT OF PUBLIC WORKS	
MARK	DATE	DESCRIPTION		
			SOUTHWEST PUMPING STATION AND FORCE MAIN SEWER DISTRICT	
DESIGNED BY <i>H.L.M.</i>		CHECKED BY <i>Ernest N. Wade</i>	APPROVED BY <i>[Signature]</i>	
DRAWN BY <i>H.L.M.</i>		<i>R.E. 9876</i>	DIRECTOR OF PUBLIC WORKS	
RECOMMENDED BY <i>[Signature]</i>		ASSISTANT CITY ENGINEER	DATE <i>1/10</i>	<b>S-133</b>
				SHEET 1 OF 14



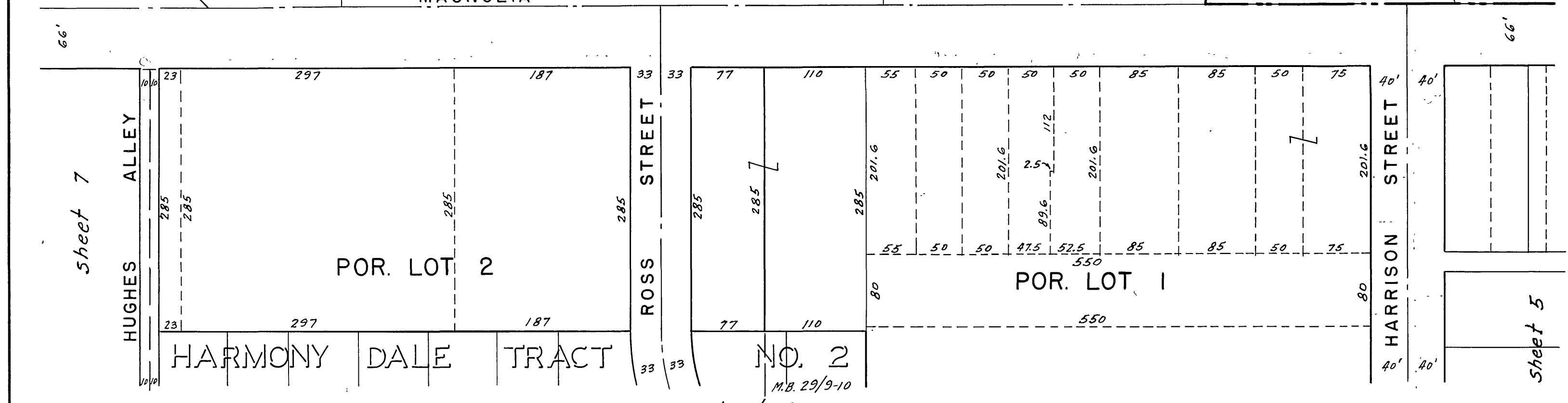
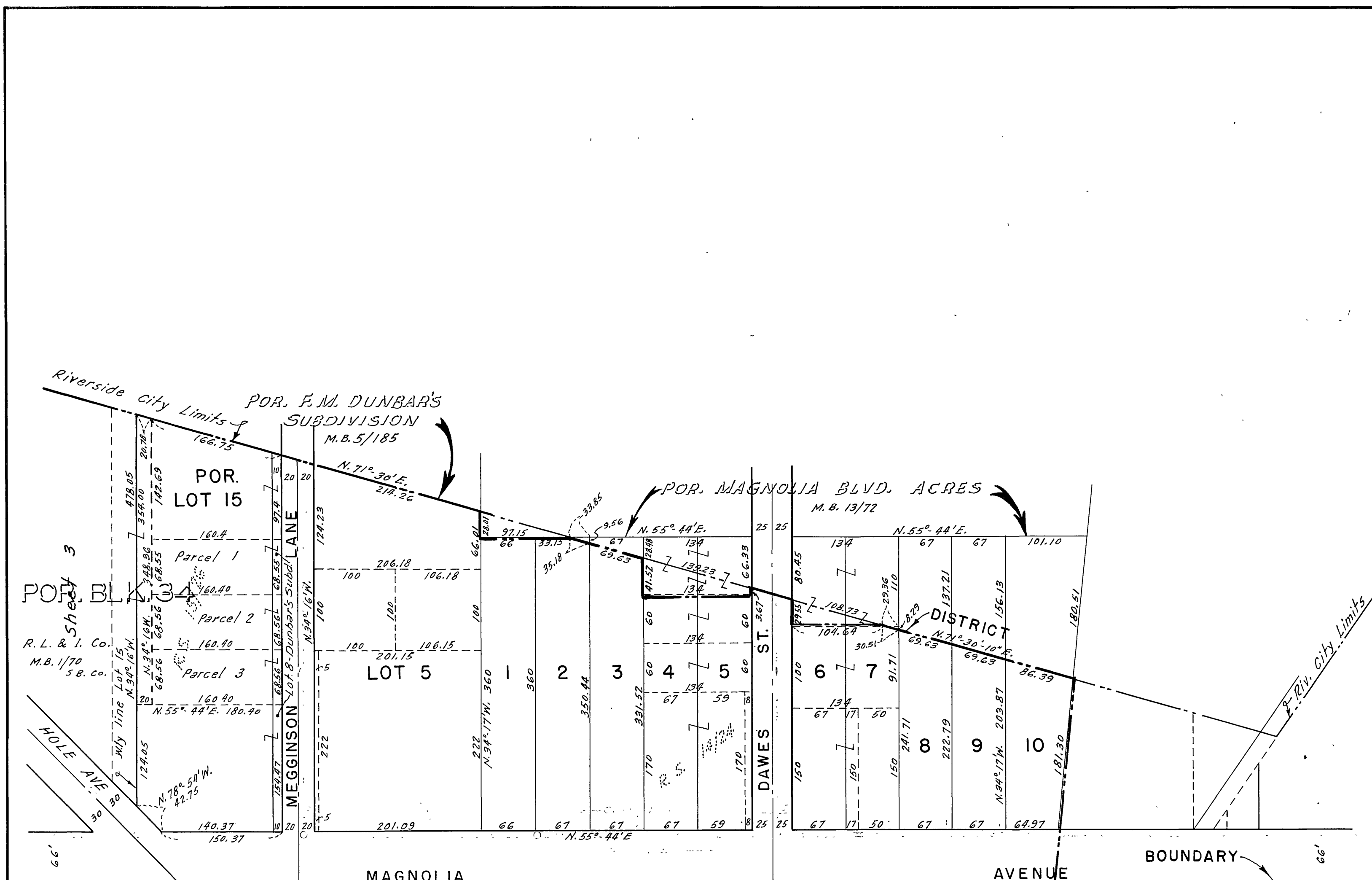
REVISIONS			CITY OF RIVERSIDE CALIFORNIA DEPARTMENT OF PUBLIC WORKS
MARK	DATE	DESCRIPTION	
			SOUTHWEST PUMPING STATION AND FORCE MAIN SEWER DISTRICT
DESIGNED BY	H.L.M.	CHECKED BY <i>E. N. Webb</i> R.E. 9876	
DRAWN BY	H.L.M.	APPROVED BY	DIRECTOR OF PUBLIC WORKS
RECOMMENDED BY			DATE
ASSISTANT CITY ENGINEER			S-133 SHEET 2 OF 14



NOTE:-  
 ① 7' of Tyler Street vacated  
 by Res. No. 6218  
 (Deed File No. 2574)

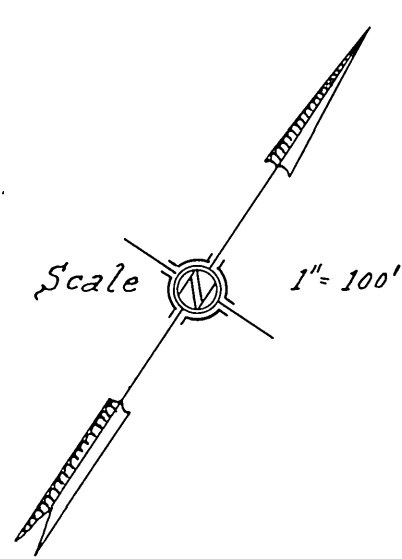


REVISIONS			CITY OF RIVERSIDE CALIFORNIA DEPARTMENT OF PUBLIC WORKS	
MARK	DATE	DESCRIPTION	SOUTHWEST PUMPING STATION AND FORCE MAIN SEWER DISTRICT	
DESIGNED BY H.L.M.		CHECKED BY	APPROVED BY	
DRAWN BY H.L.M.		<i>E. H. Wall</i> R.E. 3876	DIRECTOR OF PUBLIC WORKS	
RECOMMENDED BY		ASSISTANT CITY ENGINEER	DATE	S-133 SHEET 3 OF 14



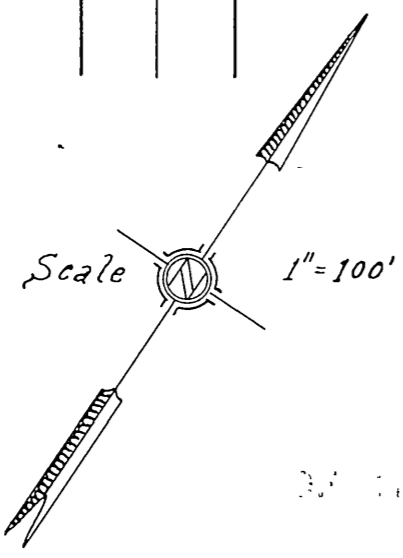
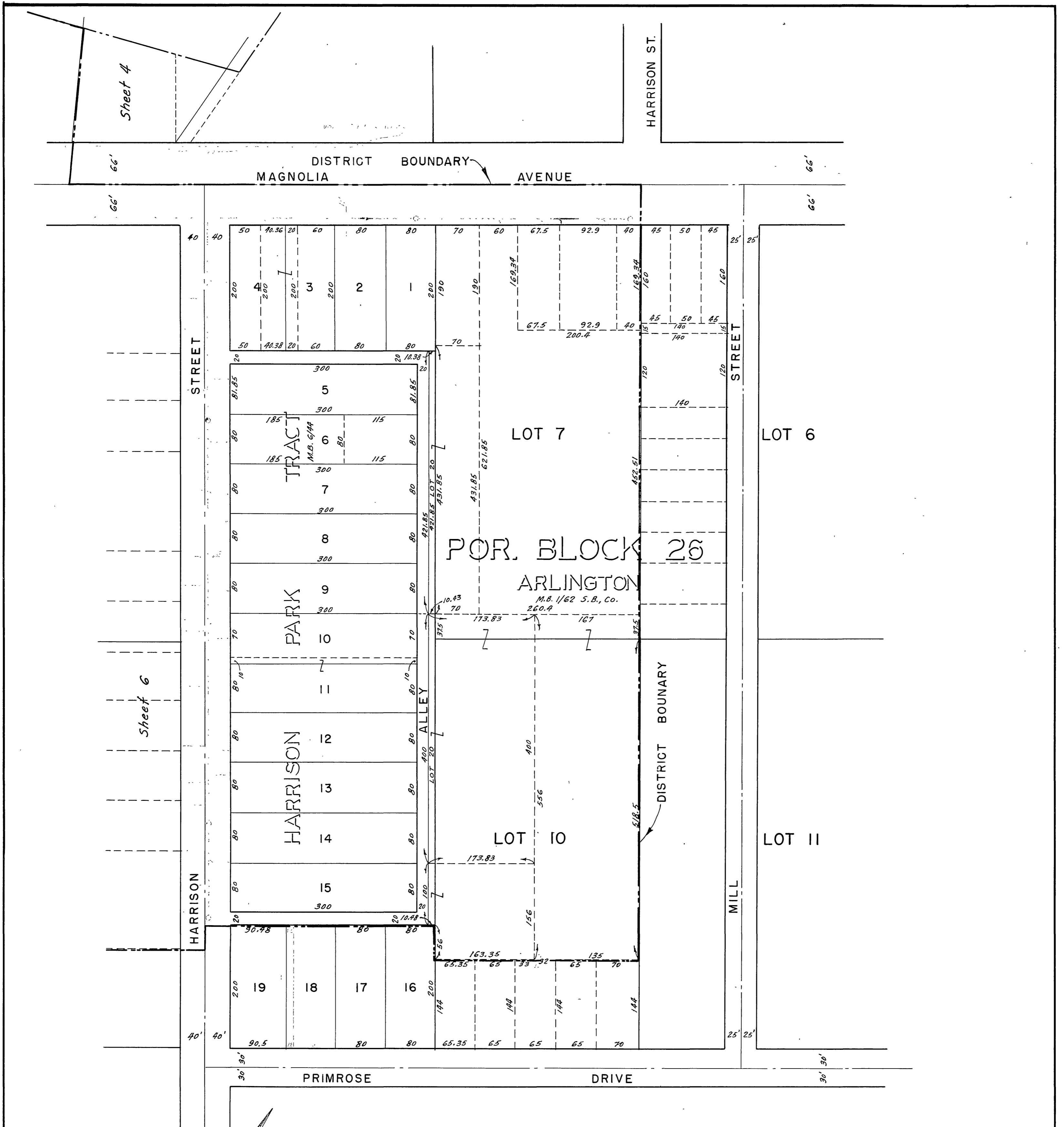
POR. BLOCK 27

R. L. & I. CO.  
M.B. 1/70 S.B. Co.



REVISIONS			CITY OF RIVERSIDE CALIFORNIA DEPARTMENT OF PUBLIC WORKS
MARK	DATE	DESCRIPTION	
			SOUTHWEST PUMPING STATION AND FORCE MAIN SEWER DISTRICT
DESIGNED BY	H.L.M.	CHECKED BY	APPROVED BY
DRAWN BY	HLM	<i>Eneat N. Wells</i> R.E. 9876	
RECOMMENDED BY			DIRECTOR OF PUBLIC WORKS
			DATE

S-133  
SHEET 4 OF 14



REVISIONS			CITY OF RIVERSIDE CALIFORNIA DEPARTMENT OF PUBLIC WORKS	
MARK	DATE	DESCRIPTION		
			SOUTHWEST PUMPING STATION AND FORCE MAIN SEWER DISTRICT	
DESIGNED BY H.L.M.		CHECKED BY Ernest N. Wall	APPROVED BY	
DRAWN BY H.L.M.		R.E. 9876	DIRECTOR OF PUBLIC WORKS	
RECOMMENDED BY			DATE 11/10	S-133 SHEET 5 OF 14
ASSISTANT CITY ENGINEER				

LOT 3

LOT 1

LOT 6

LOT 8

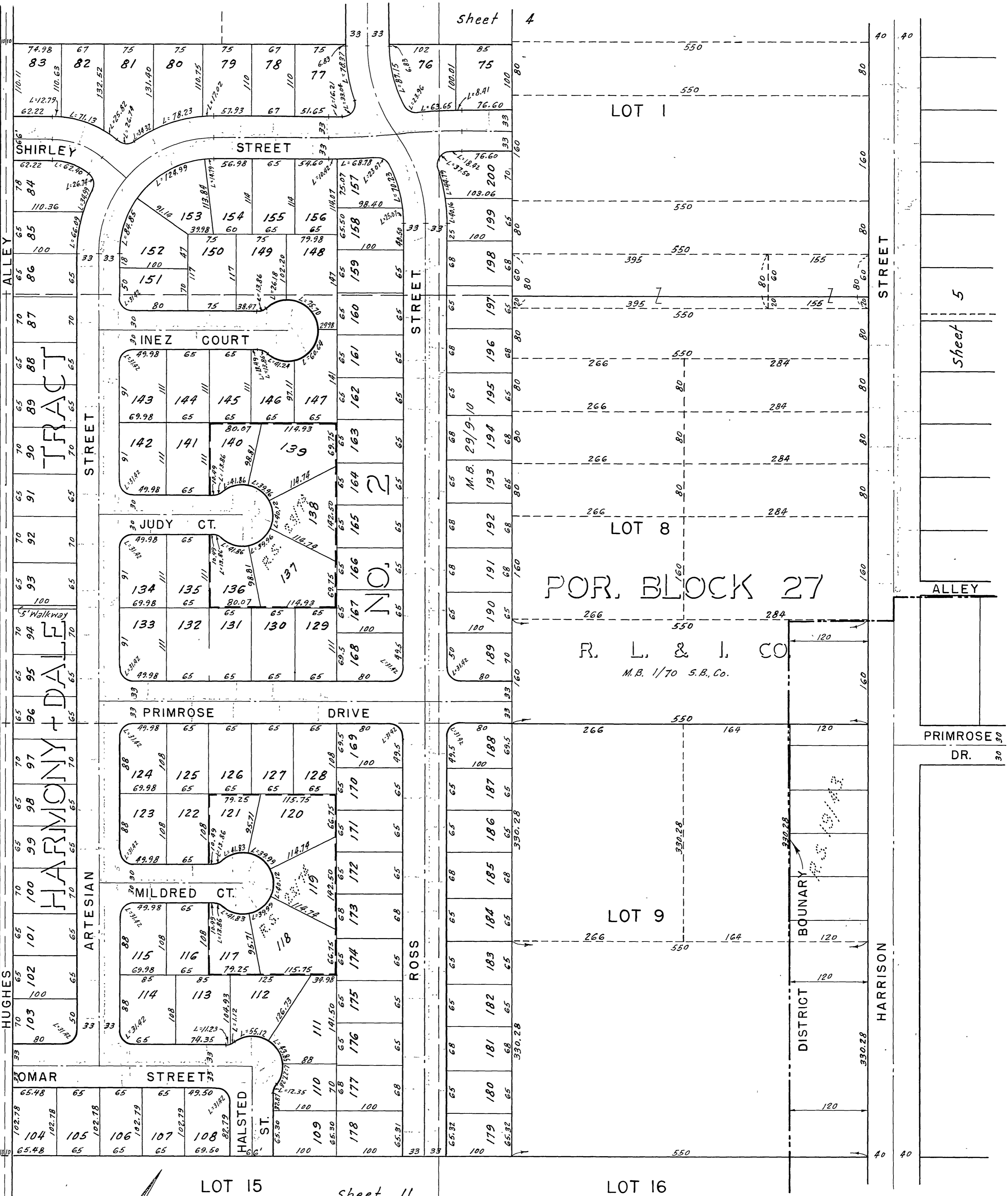
LOT 11

LOT 9

LOT 14

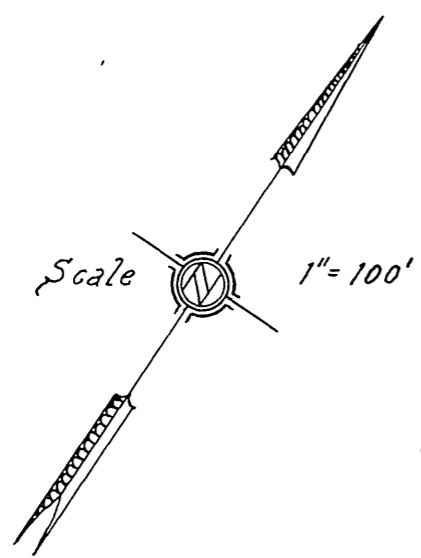
LOT 15

LOT 16



POR. BLOCK 27

R. L. & I. CO  
M.B. 1/70 S.B. Co.



REVISIONS			CITY OF RIVERSIDE CALIFORNIA DEPARTMENT OF PUBLIC WORKS
MARK	DATE	DESCRIPTION	
			SOUTHWEST PUMPING STATION AND FORCE MAIN SEWER DISTRICT
DESIGNED BY	H.L.M.	CHECKED BY	APPROVED BY
DRAWN BY	H.L.M.	<i>Ernest N. Wall</i> R.E. 9876	
RECOMMENDED BY			DIRECTOR OF PUBLIC WORKS
			DATE

S-133  
SHEET 6 OF 14

sheet 3

HOLE AVE.

MAGNOLIA AVENUE

STREET

Sheet 8

LOT 4

LOT 3

POR. BLOCK 27

R. L. & I. CO.  
M.B. 1/70 S.B. Co.

LOT 5

LOT 6

TYLER

LOT 12

Sheet 10

LOT 11

SHIRLEY ST.

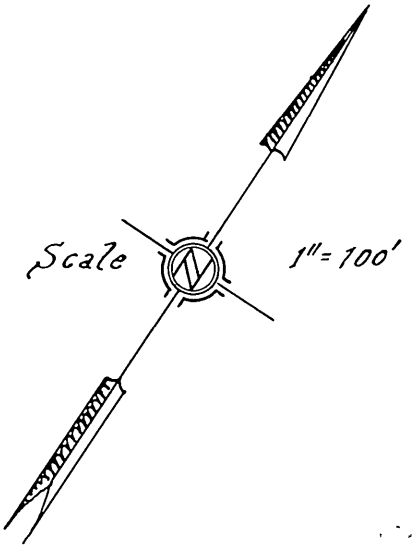
ALLEY

NO. 2

TRACT

DALE

HARMONY



REVISIONS			CITY OF RIVERSIDE CALIFORNIA DEPARTMENT OF PUBLIC WORKS	
MARK	DATE	DESCRIPTION	SOUTHWEST PUMPING STATION AND FORCE MAIN SEWER DISTRICT	
			DESIGNED BY H.L.M.	CHECKED BY Ernest N. Webb R.E. 9876
			DRAWN BY H.L.M.	APPROVED BY _____ DIRECTOR OF PUBLIC WORKS
			RECOMMENDED BY _____ ASSISTANT CITY ENGINEER	DATE _____

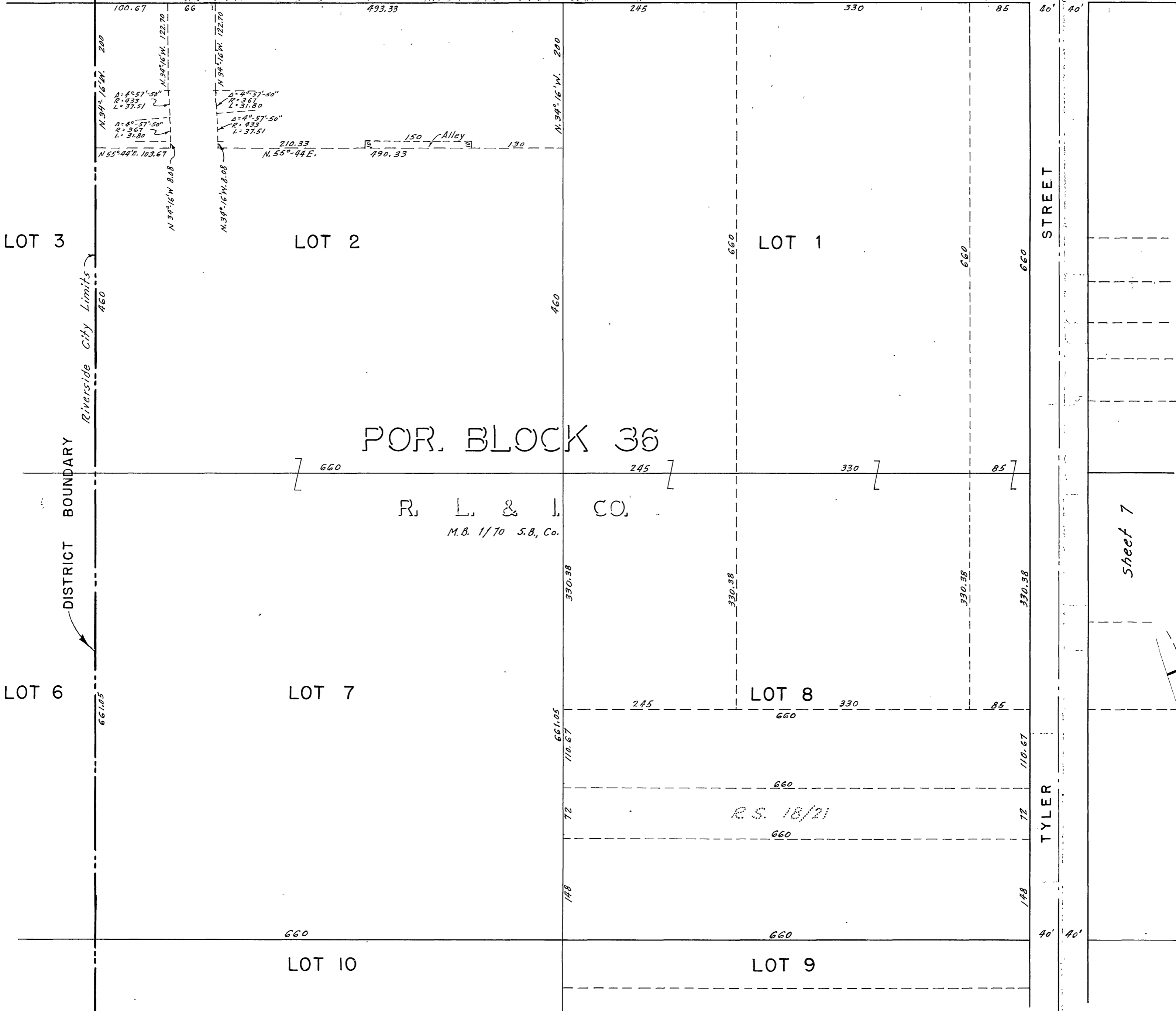
S-133  
SHEET 7 OF 14

Sheet 2

40' 33' 7"

MAGNOLIA AVENUE

AVENUE



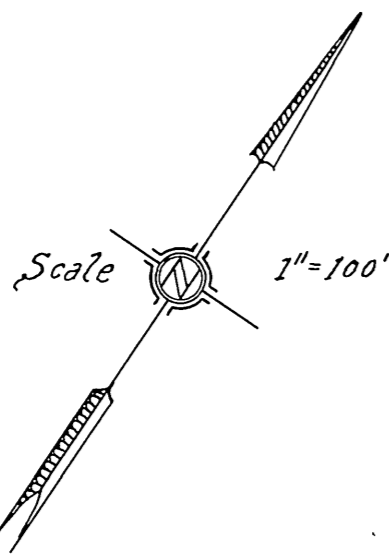
POR. BLOCK 36

R. L. & I. CO.  
M.B. 1/70 S.B., Co.

R.S. 18/21

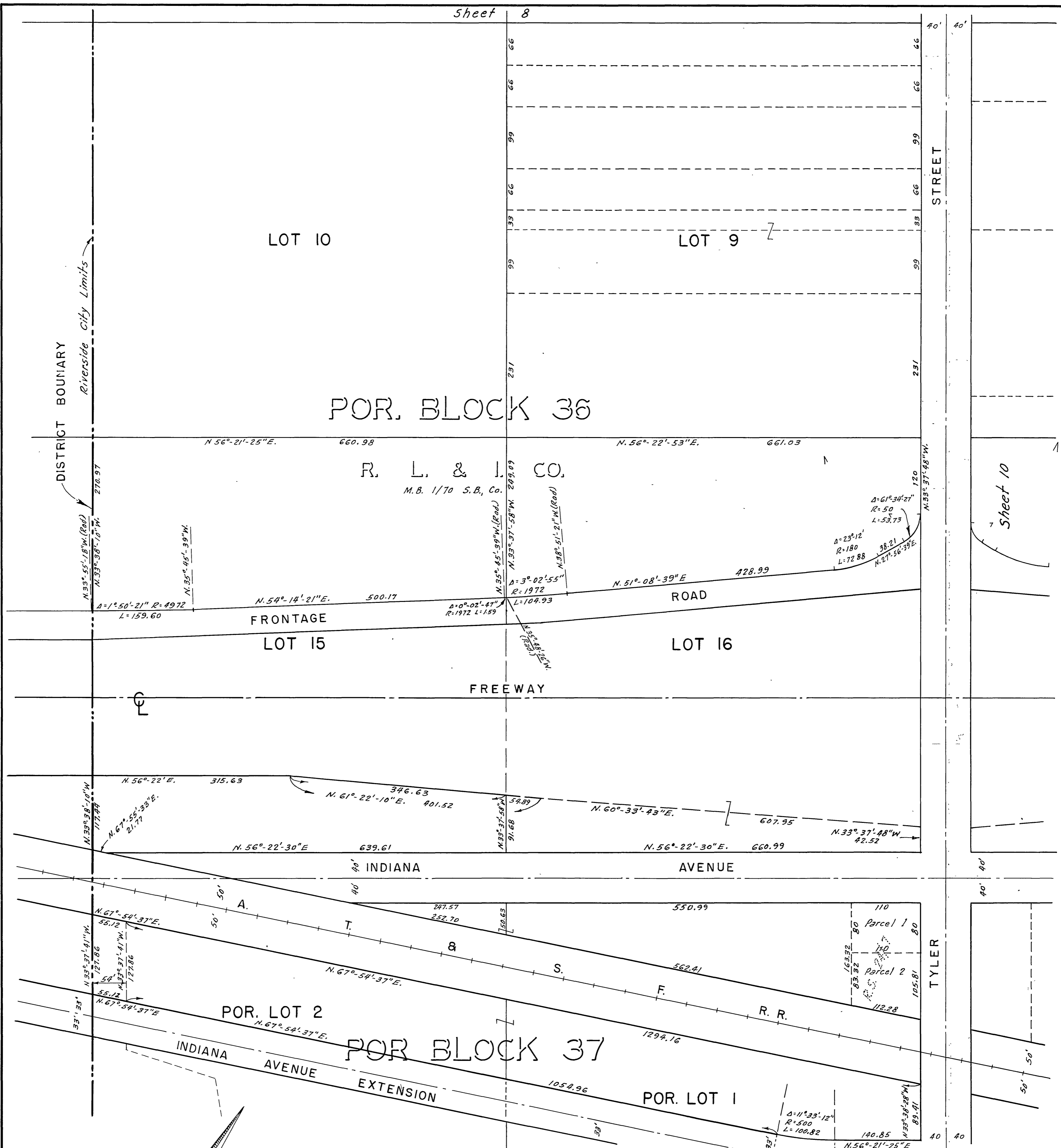
TYLER

Sheet 9

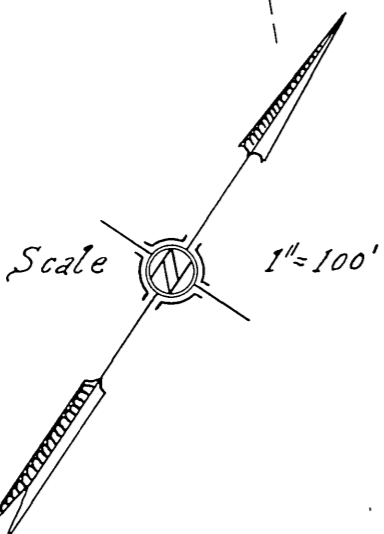


REVISIONS			CITY OF RIVERSIDE CALIFORNIA DEPARTMENT OF PUBLIC WORKS
MARK	DATE	DESCRIPTION	
			SOUTHWEST PUMPING STATION AND FORCE MAIN SEWER DISTRICT
DESIGNED BY	H.L.M.	CHECKED BY <i>Ernest N. Wade</i> R.E. 9876	
DRAWN BY	H.L.M.	APPROVED BY	DIRECTOR OF PUBLIC WORKS
RECOMMENDED BY		DATE	S-133
ASSISTANT CITY ENGINEER			SHEET 8 OF 14



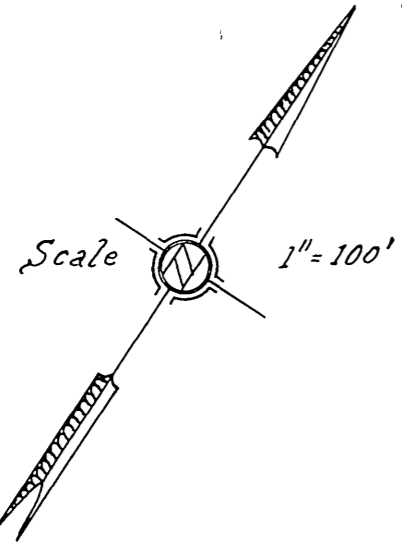
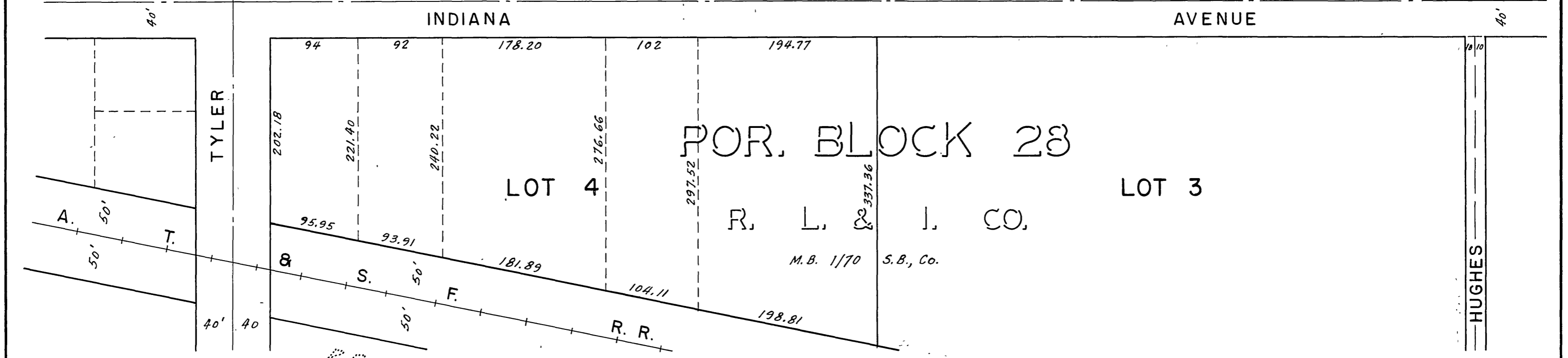
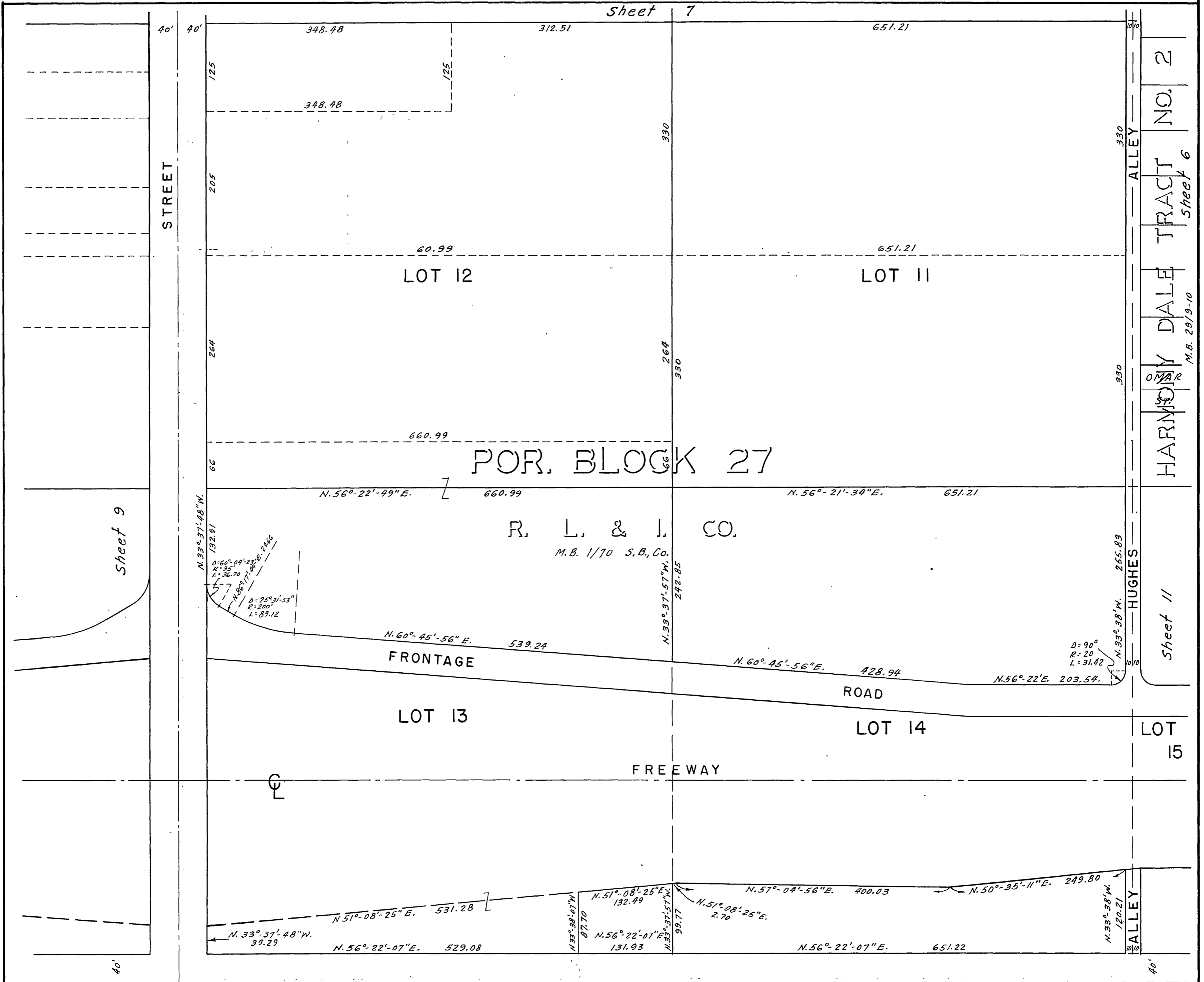


Sheet 10



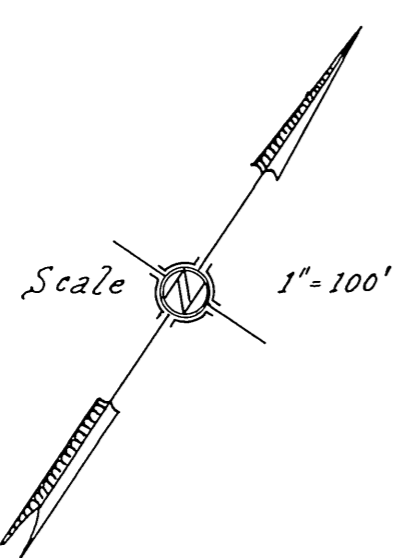
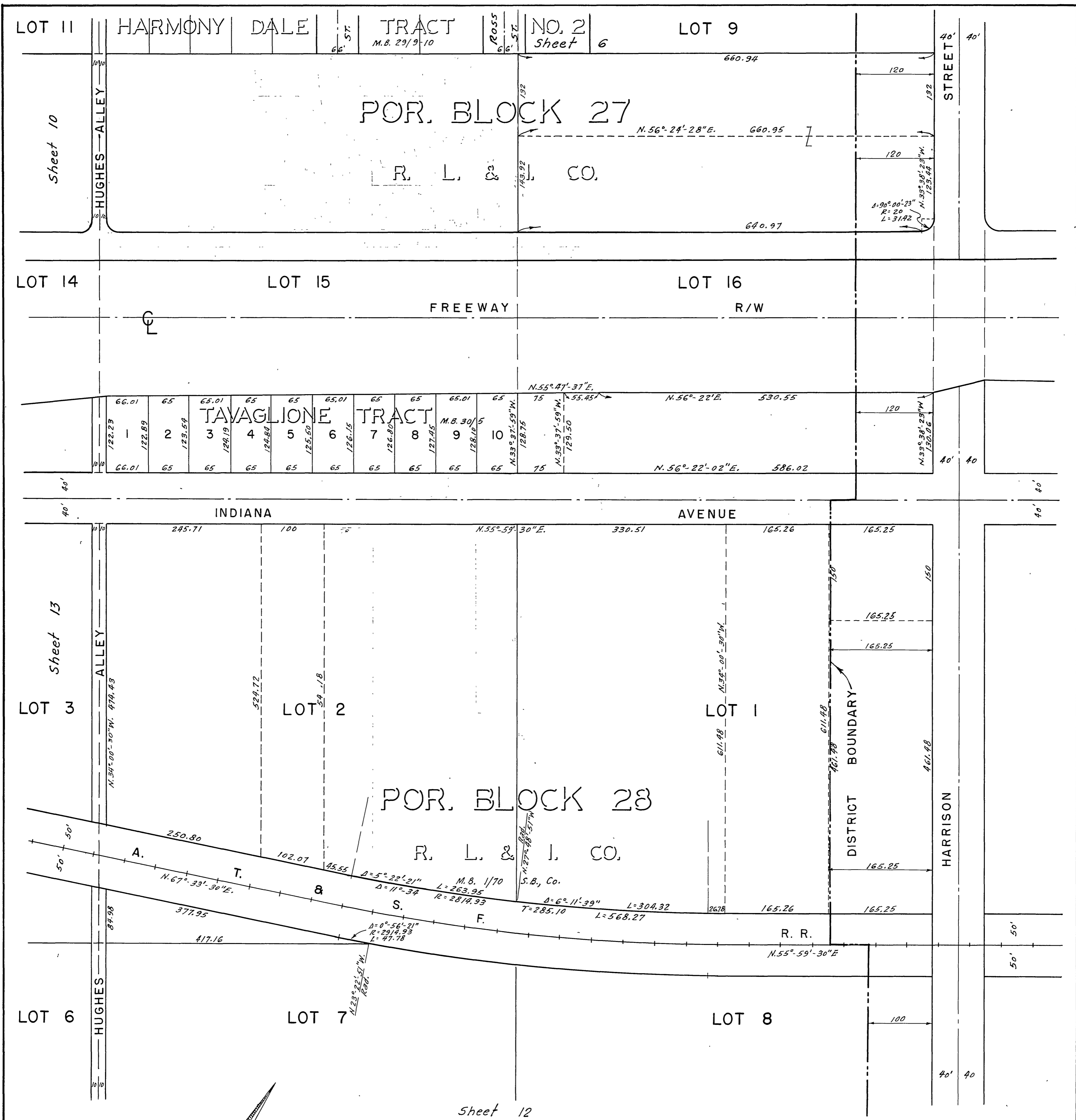
REVISIONS			CITY OF RIVERSIDE CALIFORNIA DEPARTMENT OF PUBLIC WORKS
MARK	DATE	DESCRIPTION	
			SOUTHWEST PUMPING STATION AND FORCE MAIN SEWER DISTRICT
DESIGNED BY	H.L.M.	CHECKED BY	APPROVED BY
DRAWN BY	H.L.M.	<i>Ernest N. Webb</i> R.E. 9876	DIRECTOR OF PUBLIC WORKS
RECOMMENDED BY		ASSISTANT CITY ENGINEER	DATE

**S-133**  
SHEET 9 OF 14



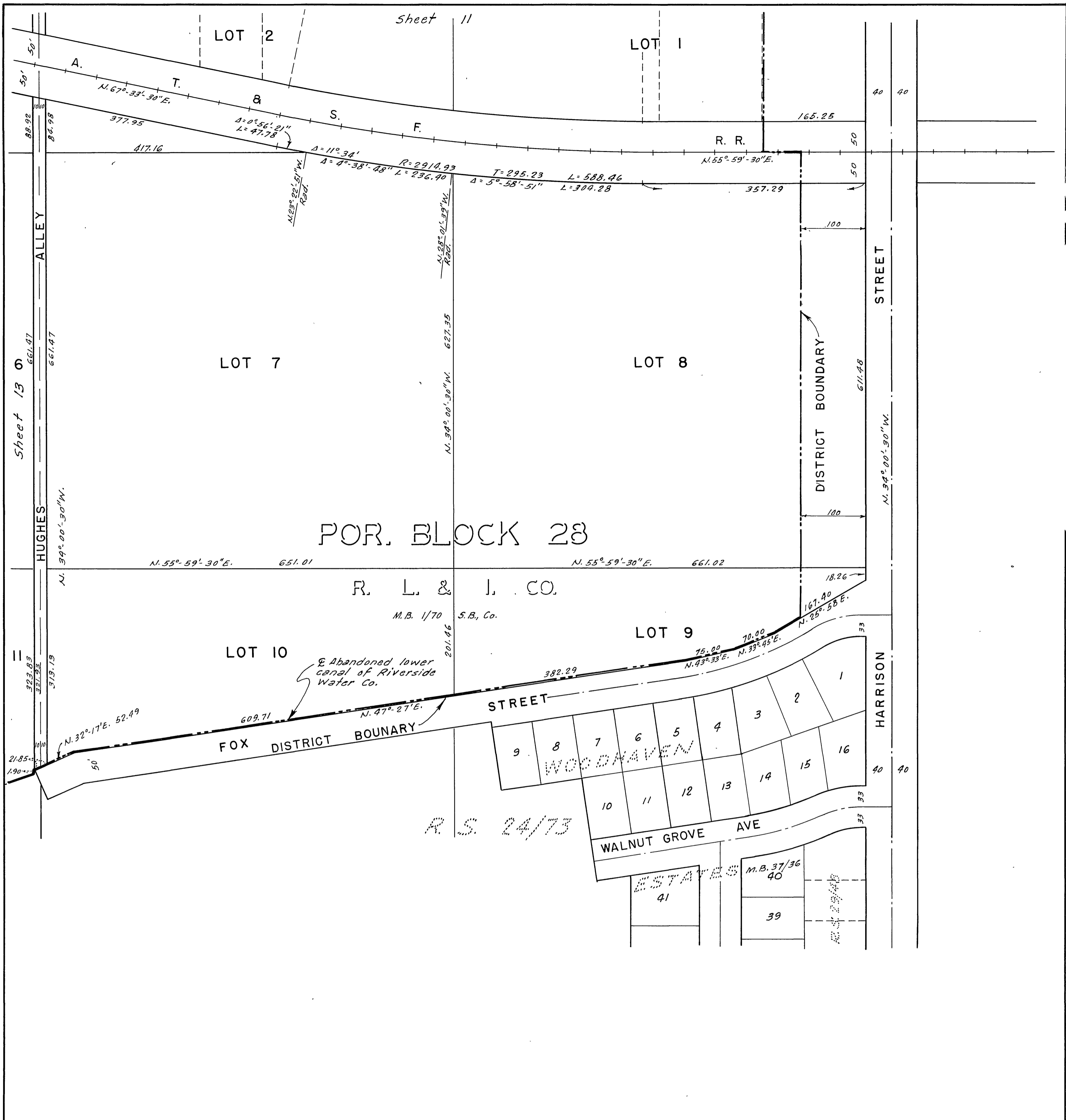
REVISIONS			CITY OF RIVERSIDE CALIFORNIA DEPARTMENT OF PUBLIC WORKS
MARK	DATE	DESCRIPTION	
			SOUTHWEST PUMPING STATION AND FORCE MAIN SEWER DISTRICT
DESIGNED BY	H.L.M.	CHECKED BY	APPROVED BY
DRAWN BY	H.L.M.	<i>E. N. Wells</i> R.E. 9876	
RECOMMENDED BY		ASSISTANT CITY ENGINEER	DIRECTOR OF PUBLIC WORKS
			DATE

**S-133**  
SHEET 10 OF 14

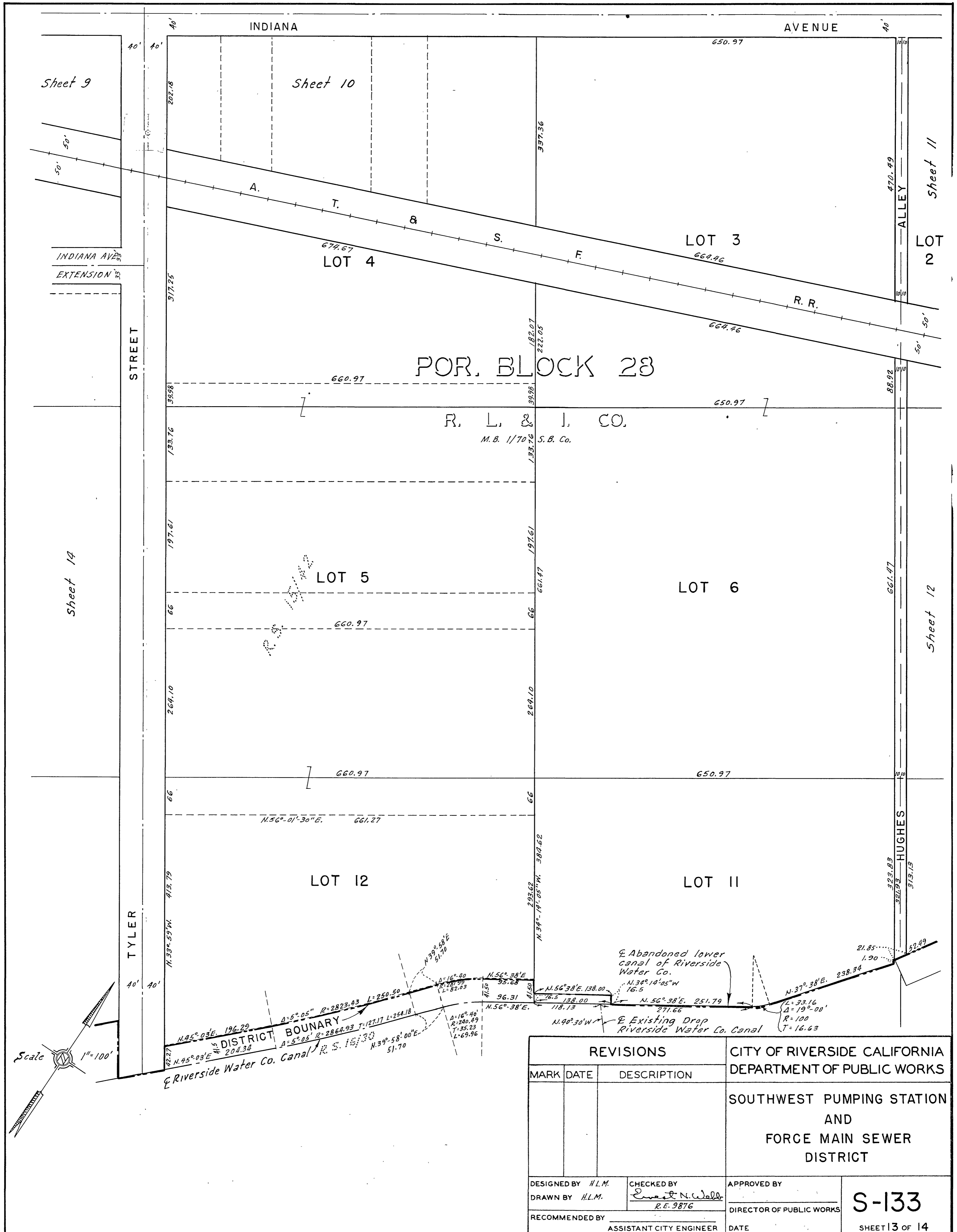


REVISIONS			CITY OF RIVERSIDE CALIFORNIA DEPARTMENT OF PUBLIC WORKS
MARK	DATE	DESCRIPTION	
			SOUTHWEST PUMPING STATION AND FORCE MAIN SEWER DISTRICT
DESIGNED BY H.L.M.		CHECKED BY <i>Ernest H. Wells</i> R.E. 9876	APPROVED BY
DRAWN BY H.L.M.			DIRECTOR OF PUBLIC WORKS
RECOMMENDED BY			DATE
		ASSISTANT CITY ENGINEER	

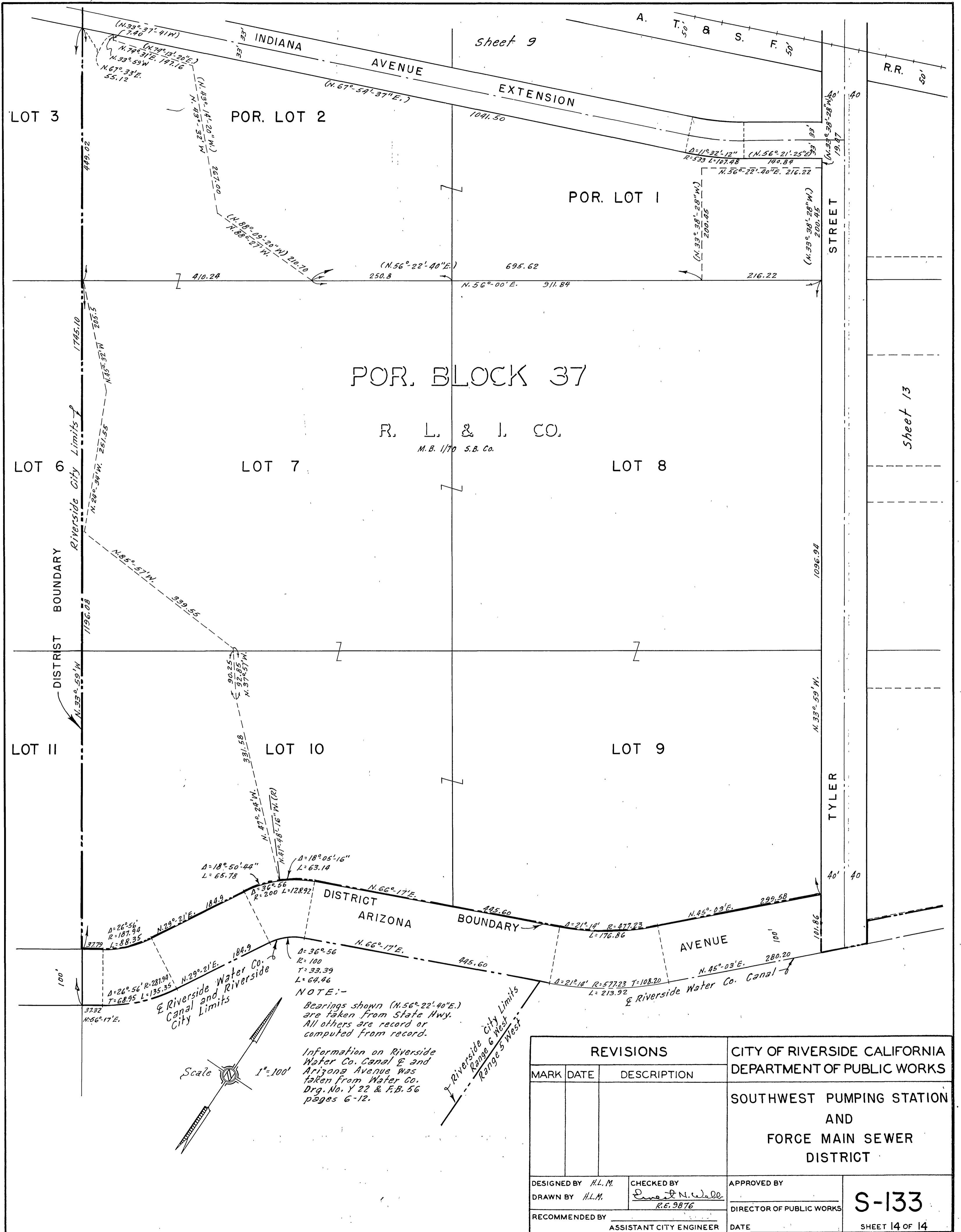
**S-133**  
SHEET 11 OF 14



REVISIONS			CITY OF RIVERSIDE CALIFORNIA DEPARTMENT OF PUBLIC WORKS	
MARK	DATE	DESCRIPTION	SOUTHWEST PUMPING STATION AND FORCE MAIN SEWER DISTRICT	
DESIGNED BY <i>J.L.M.</i>		CHECKED BY <i>E. N. Webb</i>	APPROVED BY _____	
DRAWN BY <i>J.L.M.</i>		<i>R.E. 9876</i>	DIRECTOR OF PUBLIC WORKS	
RECOMMENDED BY _____			DATE _____	S-133 SHEET 12 OF 14
ASSISTANT CITY ENGINEER				



REVISIONS			CITY OF RIVERSIDE CALIFORNIA DEPARTMENT OF PUBLIC WORKS	
MARK	DATE	DESCRIPTION	SOUTHWEST PUMPING STATION AND FORCE MAIN SEWER DISTRICT	
DESIGNED BY H.L.M.		CHECKED BY <i>E. N. Woll</i>	APPROVED BY	
DRAWN BY H.L.M.		R.E. 9876	DIRECTOR OF PUBLIC WORKS	
RECOMMENDED BY		ASSISTANT CITY ENGINEER	DATE	S-133
				SHEET 13 OF 14



REVISIONS			CITY OF RIVERSIDE CALIFORNIA DEPARTMENT OF PUBLIC WORKS	
MARK	DATE	DESCRIPTION		
			SOUTHWEST PUMPING STATION AND FORCE MAIN SEWER DISTRICT	
DESIGNED BY H.L.M.		CHECKED BY <i>Edward N. Wald</i> R.E. 9876	APPROVED BY	
DRAWN BY H.L.M.			DIRECTOR OF PUBLIC WORKS	
RECOMMENDED BY			DATE	
ASSISTANT CITY ENGINEER			DATE	

S-133  
SHEET 14 OF 14