

QUANTITY ESTIMATE

1. 8" V.C.P.	205 L.F.
2. STD. 500 MANHOLE	2 EA.
3. POINT REMOVAL & REBURFACING	85 L.F.
4. 4" SEWER LATERAL	512 L.F.
5. MODIFY EXIST. MANHOLE	1 EA.

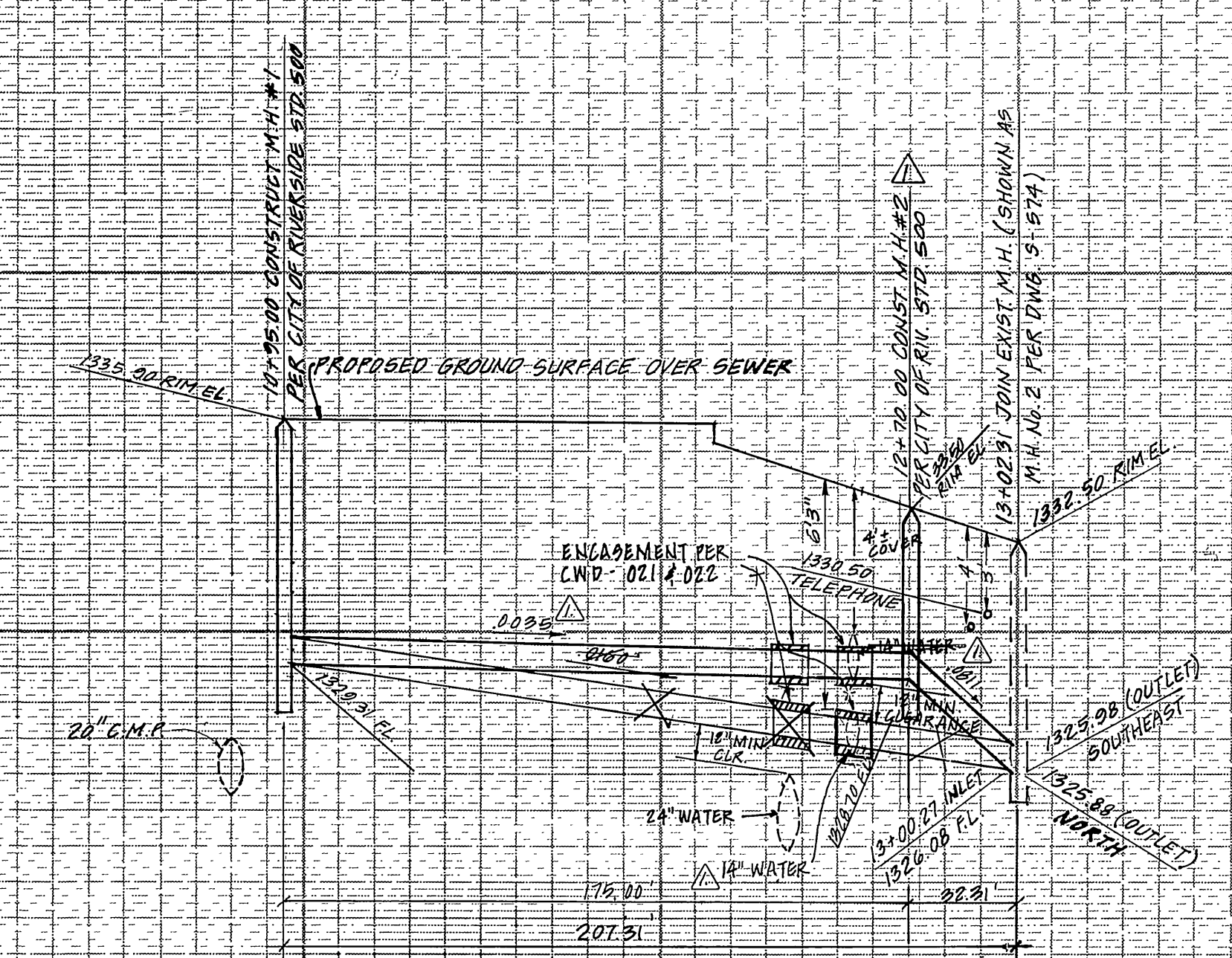
BENCHMARK:

CITY OF RIVERSIDE 150-10171/2 P.K. NAIL
CITY ENGINEER TAG IN SWLY. CURB OF
ALESSANDRO 2001 - 3' ELY. OF VIA VISTA
DRIVE. ELEV. = 1330.662

1340

1330

PROFILE SCALE:
HORIZ. 1" = 40'
VERT. 1" = 4'

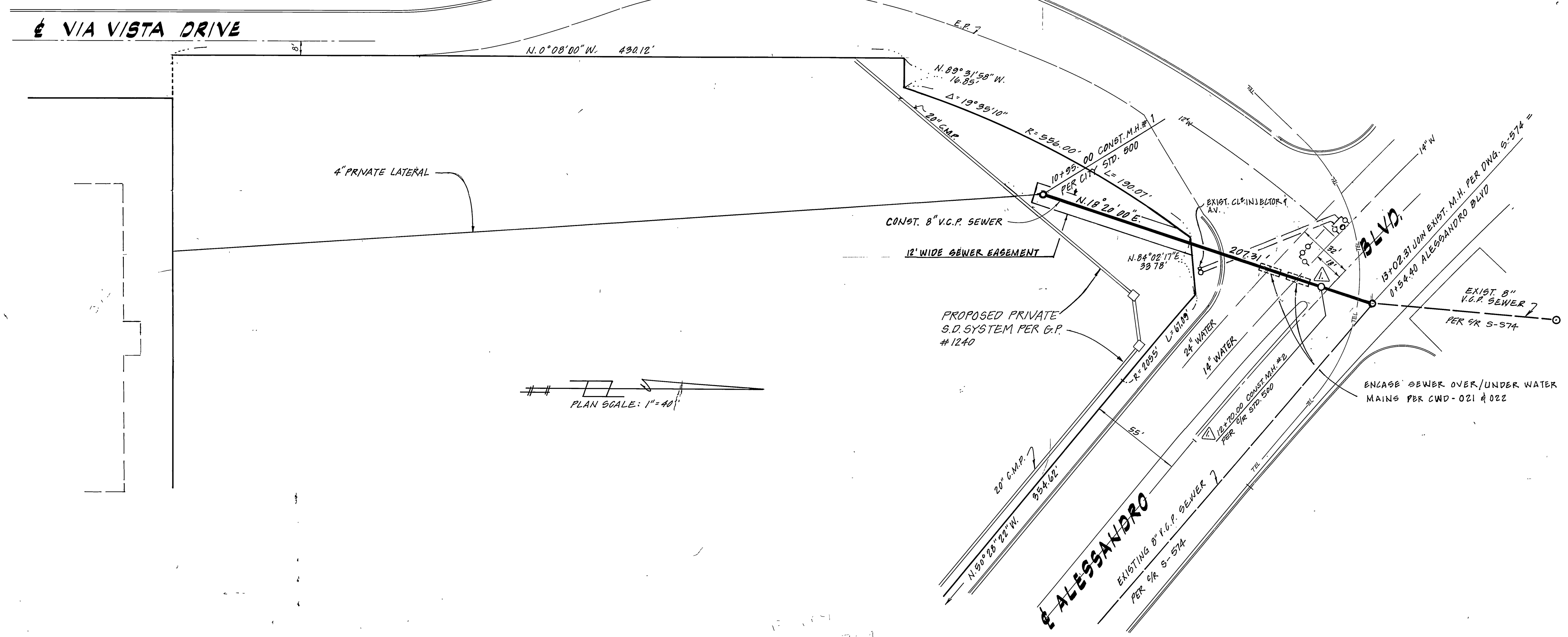


1340

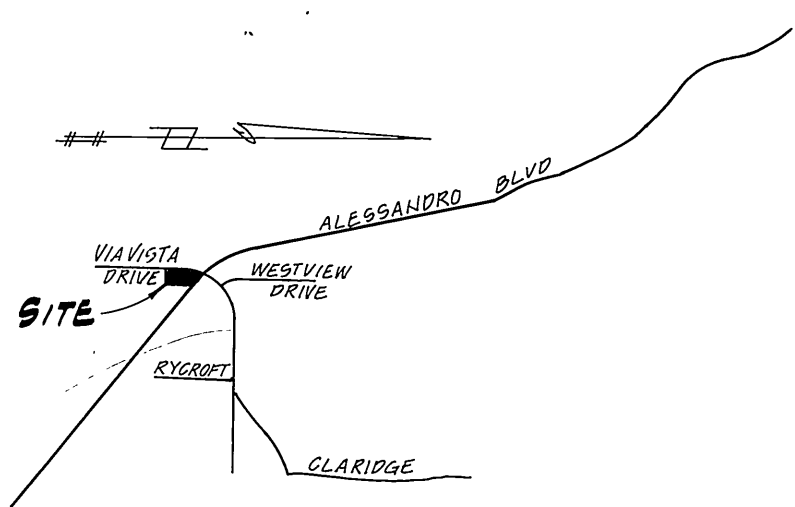
1330

GENERAL NOTES:

- IT SHALL BE THE RESPONSIBILITY OF THE CONTRACTOR TO CLEAR THE RIGHT OF WAY IN ACCORDANCE WITH THE PROVISIONS OF LAW AS IT AFFECTS EACH UTILITY INCLUDING IRRIGATION LINES AND APPURTENANCES AND AT NO COST TO THE CITY.
- CONSTRUCTION SHALL BE IN ACCORDANCE WITH THE CITY OF RIVERSIDE DEPT. OF PUBLIC WORKS, STANDARD DRAWINGS AND THE STANDARD SPECIFICATIONS FOR PUBLIC WORKS CONSTRUCTION, 1992 EDITION.
- LOCATION OF LATERALS TO BE DETERMINED IN THE FIELD AT THE DIRECTION OF THE OWNER. AVOID CONFLICT WITH PROPOSED AND/OR EXISTING FACILITIES.
- CONTRACTOR IS TO VERIFY EXISTING SEWER ELEVATION PRIOR TO CONSTRUCTION.
- QUANTITIES SHOWN ARE FOR INFORMATION ONLY AND THE CITY OF RIVERSIDE IS NOT RESPONSIBLE FOR THEIR ACCURACY.
- ANY TRAFFIC CONTROL STRIPING OBLITERATED DURING CONSTRUCTION SHALL BE RESTORED BY THE CONTRACTOR WITHIN FIVE DAYS AFTER NOTIFICATION FROM THE CITY INSPECTORS.
- A PLUG SHALL BE INSTALLED AND WILL REMAIN IN PLACE WHERE THE NEW SEWER CONNECTS WITH THE EXISTING SEWER UNTIL THE NEW SEWER IS ACCEPTED BY THE CITY.
- THE PRIVATE ENGINEER, SIGNING THESE PLANS IS RESPONSIBLE FOR ASSURING THE ACCURACY AND ACCEPTABILITY OF THE WORK HEREON. IN THE EVENT OF DISCREPANCIES ARISING DURING CONSTRUCTION AS A RESULT OF ERRORS OR OMISSIONS, THE PRIVATE ENGINEER SHALL BE RESPONSIBLE FOR DETERMINING AN ACCEPTABLE SOLUTION AND REVISING THE PLANS FOR APPROVAL BY THE CITY.
- NO FINISHED FLOOR ELEVATION SHALL BE LESS THAN FOUR FEET ABOVE THE SEWER FLOWLINE AT THE POINT OF CONNECTION WITHOUT HAVING AN APPROVED BACKWATER VALVE INSTALLED IN THE LATERAL.
- THE CONTRACTOR SHALL NOTIFY UTILITY COMPANIES AND POT HOLE UTILITIES PRIOR TO STARTING CONSTRUCTION. UTILITY ELEVATIONS SHALL BE MEASURED AND THE CLEARANCES VERIFIED. IN THE EVENT OF INTERFERENCE THE ENGINEER SHALL REVISE THE PLAN AND NO WORK SHALL PROCEED UNTIL THE REVISED PLAN IS APPROVED BY THE CITY.
- SEWER/WATER LINE ENGAGEMENT SHALL CONFORM TO CITY WATER DIV. STD'S C.W.D. - 021 & 022



PLAN SCALE: 1" = 40'



VICINITY MAP

CITY OF RIVERSIDE - WATER SYSTEM	PACIFIC TELEPHONE CO.
APPROVED BY: <i>E.L. Moore</i> 9-7-83	APPROVED BY: <i>Dean L. Shinn</i> 9-8-83
CHIEF UTILITIES ENGINEER DATE	DATE

WINCHESTER ASSOCIATES
CIVIL ENGINEERS - LAND SURVEYORS
12540 HEALING ST. SUITE 5
SUNNYMEAD, CA 92388 Ph. 659-4989

DESIGNED BY: *Harvey Omarsell* 3-23-83
DRAWN BY: *H.D. MARCELL* R.C.E. 23099 DATE

MARK	REVISIONS	APPR.	DATE

CITY OF RIVERSIDE, CALIFORNIA PUBLIC WORKS DEPARTMENT			
APPROVED BY:	BY:	DATE:	APPROVED BY:
PRINCIPAL ENGINEER	TRAFFIC DIVISION	CHIEF PUB. WORKS ENGR.	DATE: 9/19/83

SEWER PLAN & PROFILE
VIA VISTA DRIVE
AND EASEMENT FOR
C-4-801
FROM ALESSANDRO BLVD. S'LY 207±

SCALE: HORIZ. 1" = 40' VERT. 1" = 4'

ACCOUNT No.	INDEX LINE
DRAWING NUMBER	
6-1331	
SHEET 1 OF 1	

* AS BUILT 7-23-84 BRET!