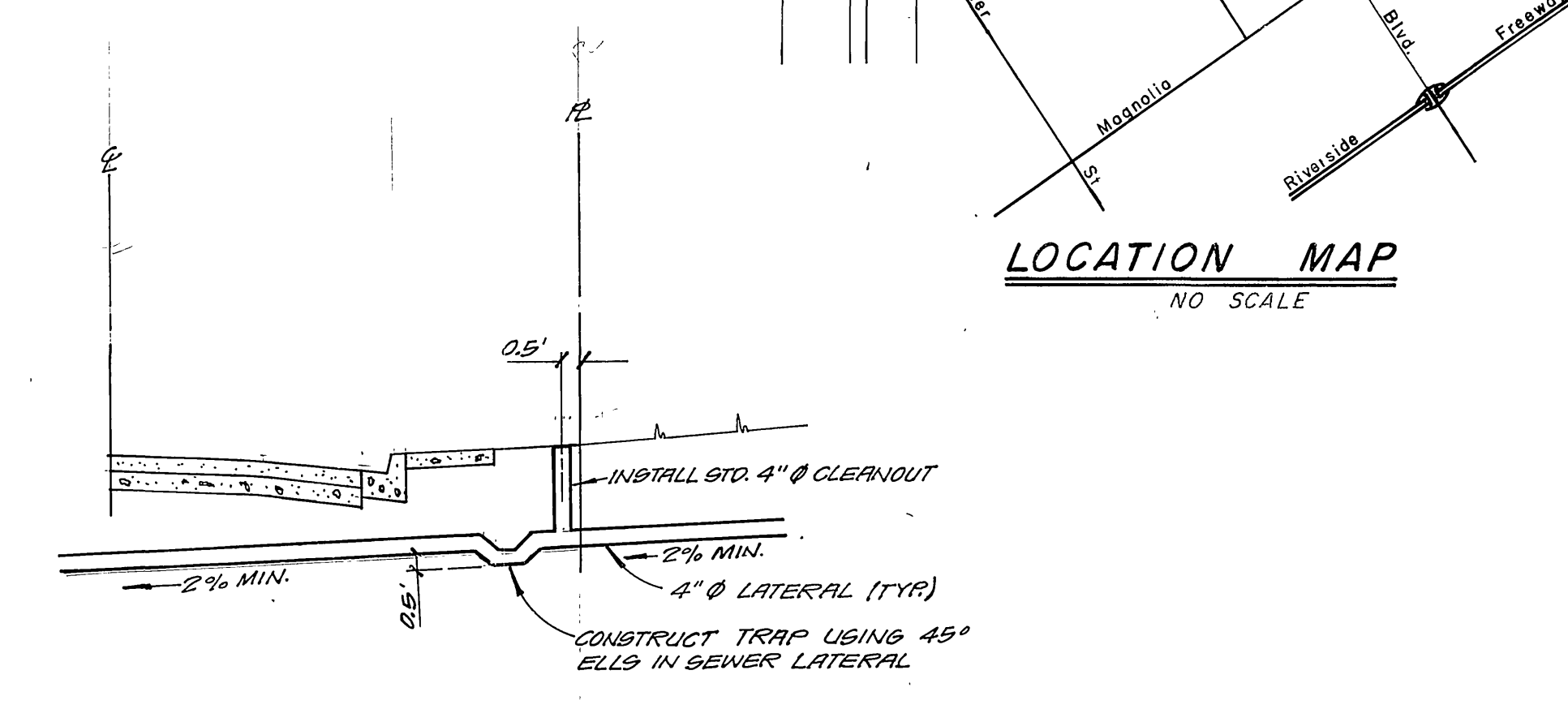


- ### GENERAL NOTES
- The private engineer signing these plans is responsible for the accuracy and acceptability of the work hereon. In the event of discrepancies arising during construction, the private engineer signing these plans shall be responsible for determining an acceptable solution and revising the plans for approval by the City.
 - Construction shall be in accordance with the Standard Specifications for Public Works Construction 1982 Edition and per City of Riverside Standard Drawings.
 - It shall be the responsibility of the Contractor to clear the Right of Way in accordance with the provisions of law as it affects each utility including irrigation lines and appurtenances and at no cost to the City.
 - Pipe shall be bedded per Case I, Standard Drawing No. 452, unless otherwise specified on the plans.
 - Location of Wye's, Laterals and Saddles to be determined in the field at the direction of the owner.
 - All stubs and laterals to be constructed in accordance with Standard Drawing No. 562. Stubs shall be plugged and capped.
 - Manhole frames and covers to be set as noted in profile by Sewer Contractor after final paving of street.
 - Laterals are to be 4" V.C.P. and extended to property line.
 - Prior to construction of the sewer. The Contractor is to expose the existing sewer and contact the Engineer for verification of existing location and elevation.
 - Plugs shall be installed and will remain in place where the new sewer connects with the existing Sewer until such time as the new sewer is accepted by the City.



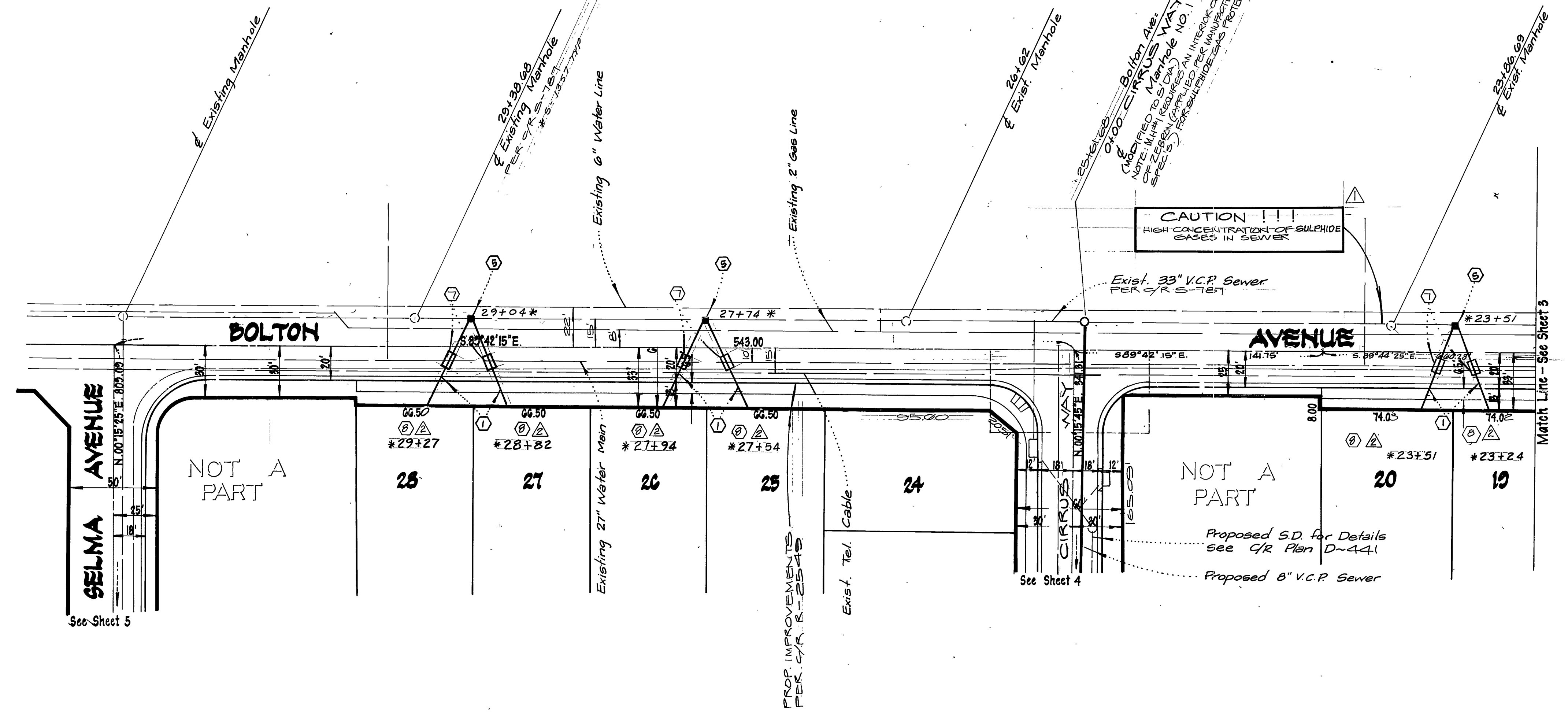
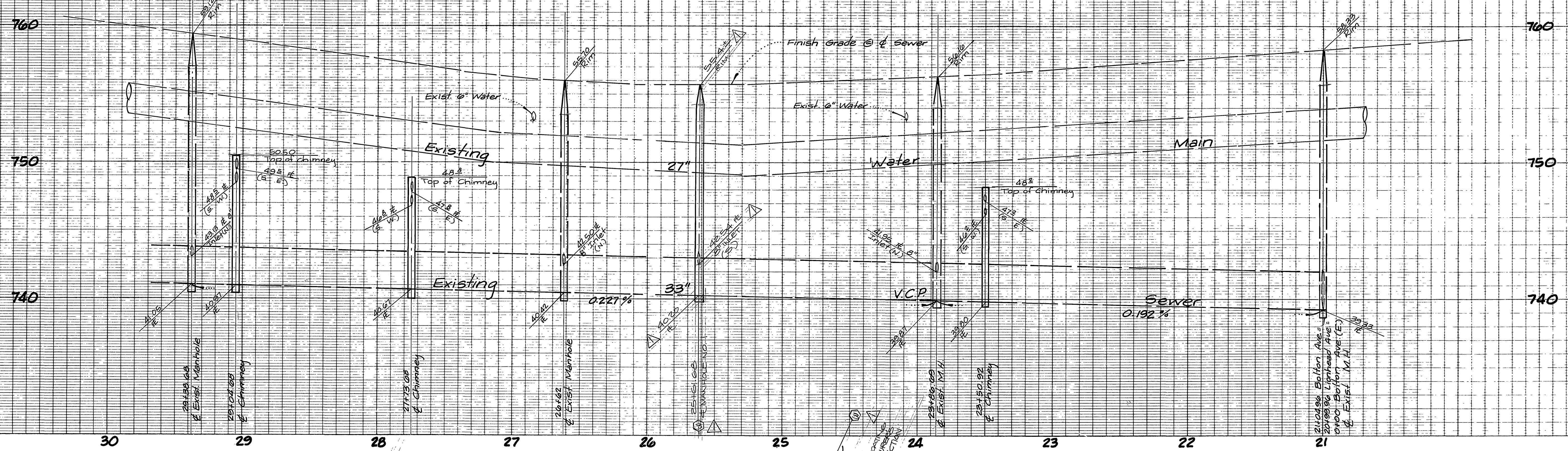
- ### CONSTRUCTION NOTES
- Construct 4" V.C.P. Lateral to property line.
 - Construct 8" V.C.P. Sewer Line.
 - Construct Manhole per City Standard No. 500.
 - Install 33"x4" saddle. (CORE DRILL MAIN)
 - Construct Chimney per City Standard No. 561. (ALL CHIMNEYS ARE TO BE U.C.P.)
 - Install 8"x4" Saddle.
 - CONSTRUCT CONCRETE ENCASUREMENT AROUND SEWER WHERE IT CROSSES EXISTING OR PROPOSED WATER MAINS, PER CITY WATER DIVISION STD. CWD-021, 022, & 023.
- Ⓜ Ⓜ CONSTRUCT HOUSE LATERAL PER DETAIL ON THIS SHEET. (25 LOTS TOTAL)

NOTICE TO CONTRACTOR
 The existence and location of underground utility pipes or structures shown on these plans are obtained by a search of the available records. To the best of our knowledge there are no existing utilities except as shown on these plans.
 The Contractor is required to take due precautionary measures to protect the utility lines shown and any other lines not of record or not shown on these plans.

CITY OF RIVERSIDE DOMESTIC SYSTEM Approved By: <i>[Signature]</i> Chief Utilities Engineer - Water	L A WAINSCOTT & ASSOCIATES CIVIL ENGINEERS GRAND TERRACE, CALIFORNIA (714) 824-1775 APPROVED BY <i>[Signature]</i> DATE 9-29-78 R.C.E. 10050	BENCH MARK: F-3-D.P.K. nail in the northerly return at Van Buren Boulevard and California Avenue FB 837/70 Elevation: 758.317	CITY OF RIVERSIDE, CALIFORNIA DEPARTMENT OF PUBLIC WORKS APPROVED BY: <i>[Signature]</i> OFFICE ENGINEER PARK DEPARTMENT TRAFFIC DIVISION ASSISTANT CITY ENG.	SEWER PLAN AND PROFILE TRACT No. 10818 INDEX MAP SCALE: As Shown	S-1334 SHT. 1 OF 7 021.09-B

*AS BUILT 9-13-85 JL

INDEX MAP



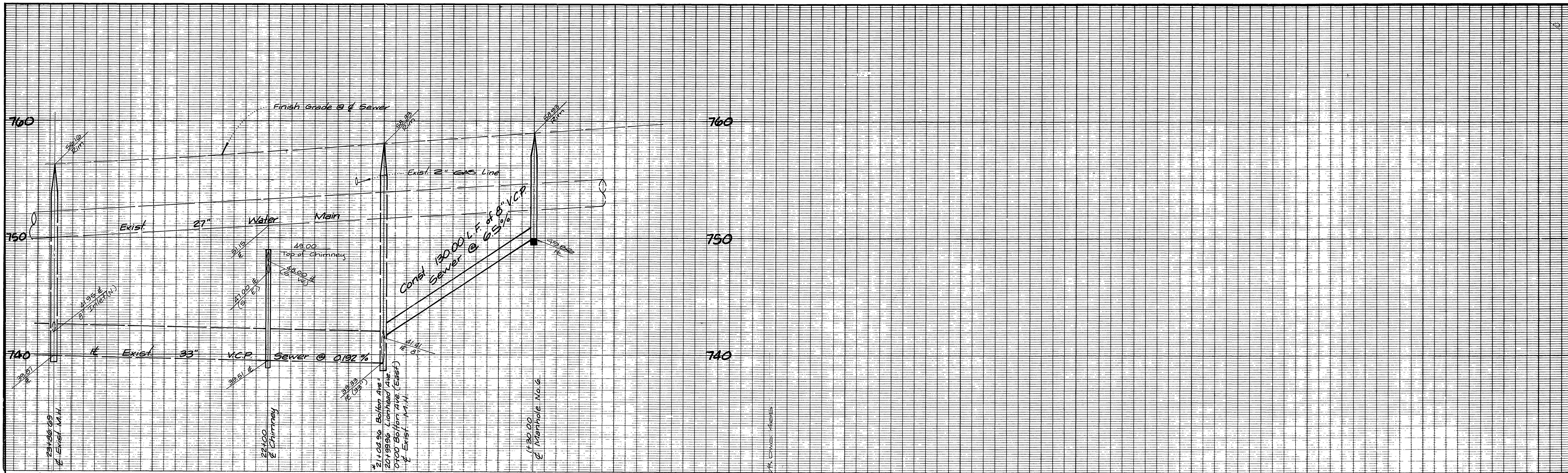
NOTE:
See Sheet 1 for General and Construction Notes

CAUTION
HIGH CONCENTRATION OF SULPHIDE GASES IN SEWER

* AS BUILT 9.13.85 7/2

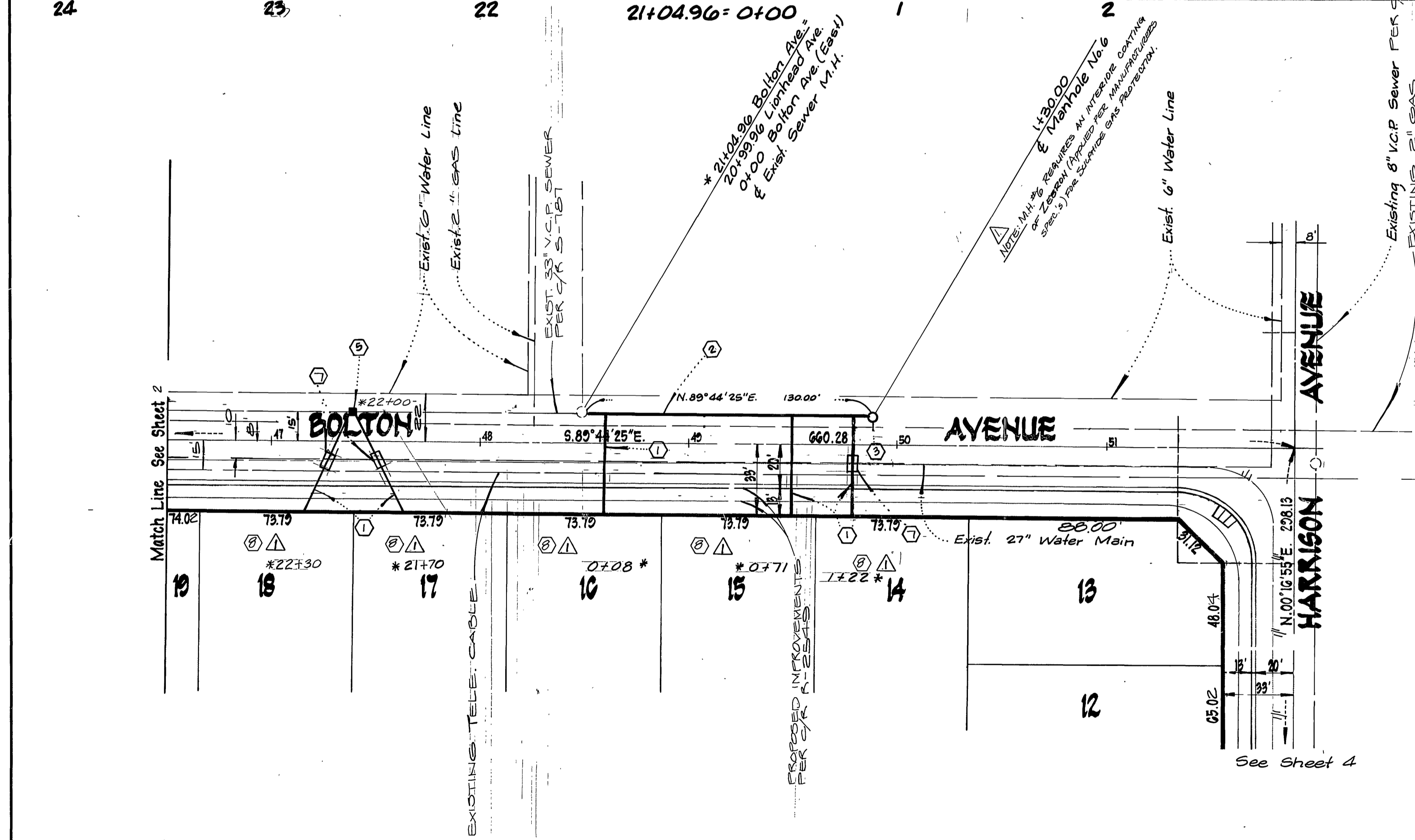
INDEX UP

CITY OF RIVERSIDE DOMESTIC SYSTEM Approved By: <i>J.L. Almon</i> Chief Utilities Engineer - Water Date: 11-18-82	L A WAINSCOTT & ASSOCIATES CIVIL ENGINEERS GRAND TERRACE, CALIFORNIA (714) 834-1775 APPROVED BY: <i>L.A. Waincott</i> DATE: 9-29-78 R.C.E. 16086	BENCH MARK: F.S.D. P.K. nail in the northerly curb return at Van Buren Blvd. and California Avenue F.D. 837/70 Elevation 758.317	CITY OF RIVERSIDE, CALIFORNIA DEPARTMENT OF PUBLIC WORKS APPROVED BY: <i>R.L. Walker</i> DIRECTOR OF PUBLIC WORKS DATE: 2/24/84	SEWER PLAN AND PROFILE TRACT NO 10818 BOLTON AVENUE SCALE: HORIZ. 1"=40' VERT. 1"=4' W.O. 021.00-B	S-1334 SHT. 2 OF 7



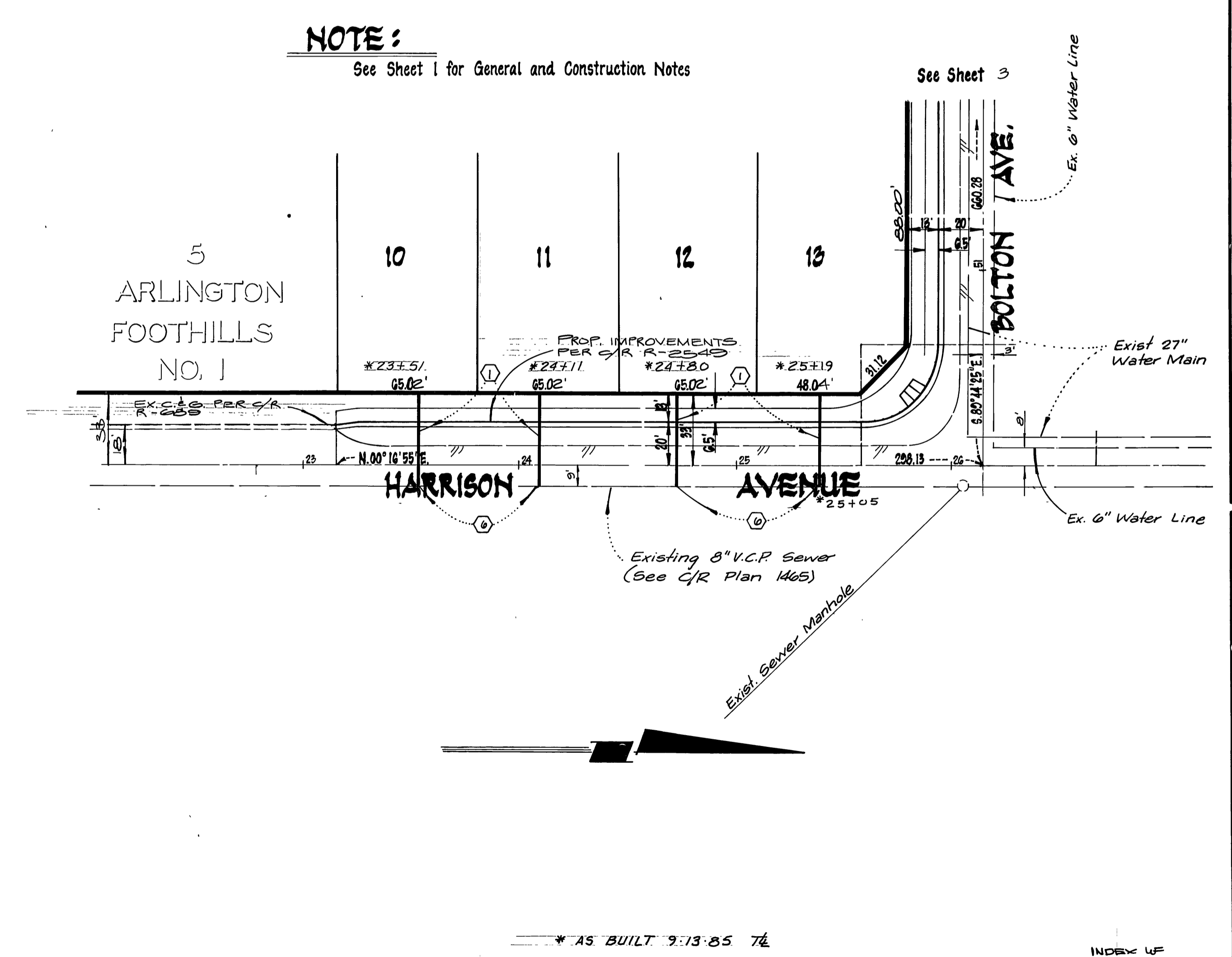
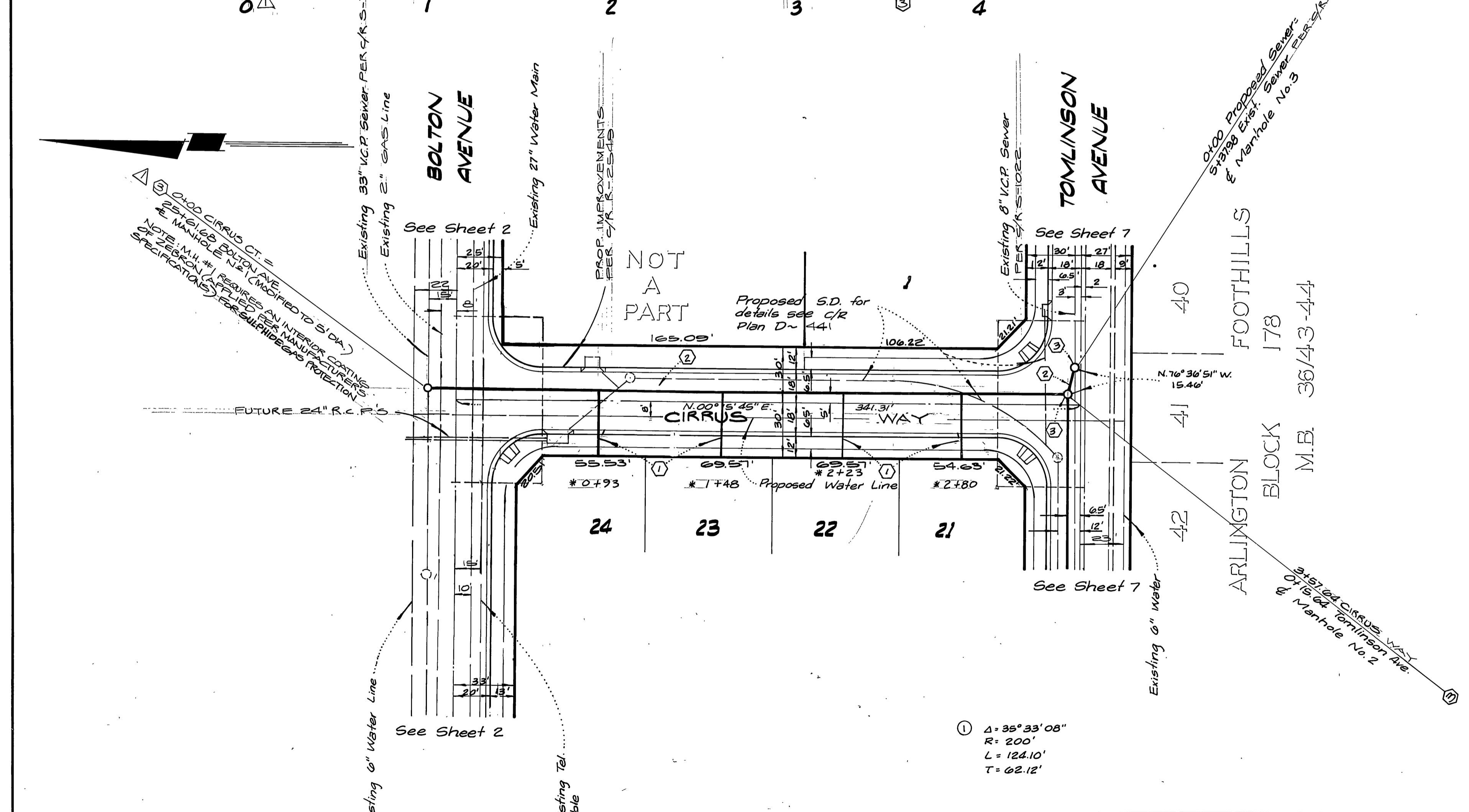
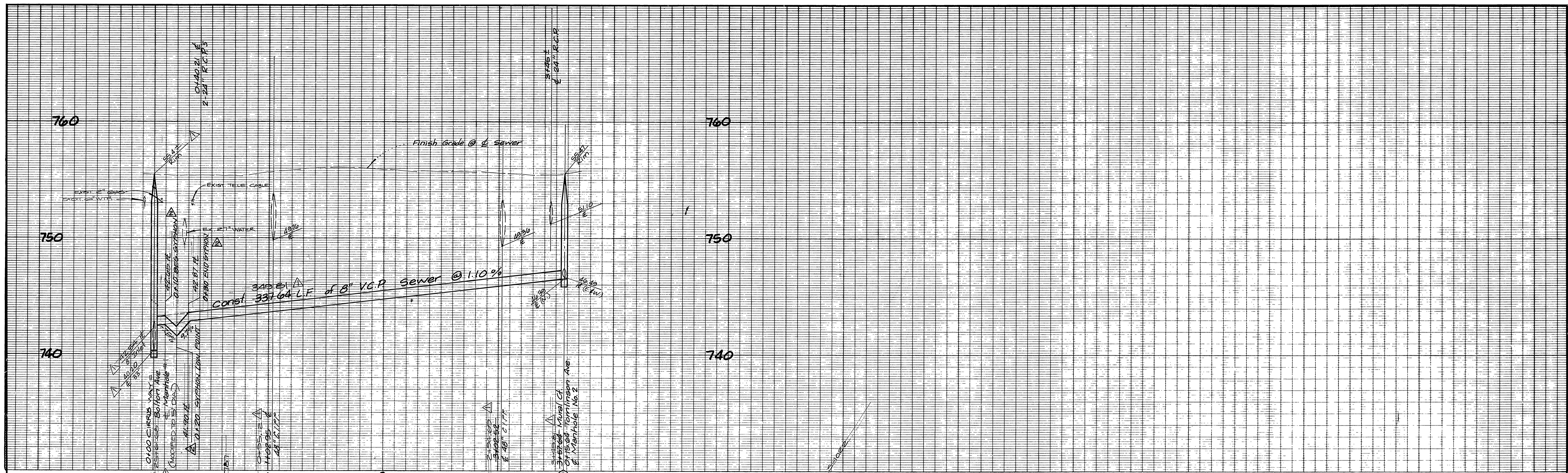
NOTE:
See Sheet 1 for General and Construction Notes

* Indicates stationing per Riverside City Plan S-787



* AS BUILT 9-13-85 TE

CITY OF RIVERSIDE DOMESTIC SYSTEM Approved By: <i>J. P. [Signature]</i> Chief Utilities Engineer - water	L A WAINSCOTT & ASSOCIATES CIVIL ENGINEERS GRAND TERRACE, CALIFORNIA (714) 824-1775 APPROVED BY <i>L.A. Waincott</i> DATE 9-22-80 R.C.E. 16056	BENCH MARK: PK. nail in the northerly curb return at Van Buren Blvd. and California Avenue F.D. 837/70 Elevation 758.317	CITY OF RIVERSIDE, CALIFORNIA DEPARTMENT OF PUBLIC WORKS		SEWER PLAN AND PROFILE TRACT NO 10818 BOLTON AVENUE SHT. 3 OF 7 W.O. 021.00-B
			APPROVED BY: <i>[Signature]</i> DATE 2/24/84 OFFICE ENGINEER PARK DEPARTMENT TRAFFIC DIVISION ASSISTANT CITY ENG.	APPROVED BY: <i>[Signature]</i> DIRECTOR OF PUBLIC WORKS	



CITY OF RIVERSIDE
DOMESTIC SYSTEM
Approved By: *[Signature]*
Chief Utilities Engineer - Water 11/3/82 Date

Existing 6" Water Line
Existing Tel. Cable
See Sheet 2

L A WAINSCOTT & ASSOCIATES
CIVIL ENGINEERS
GRAND TERRACE, CALIFORNIA
(714) 824-1775

APPROVED BY: *[Signature]* DATE: 9-29-78
R.C.E. 16026

W.D. 021.09 FOR Concordia Development F.B. 2
DESIGNED BY P.H.K. DRAWN BY D.R.K. CHECKED BY BERNIE
FRSD

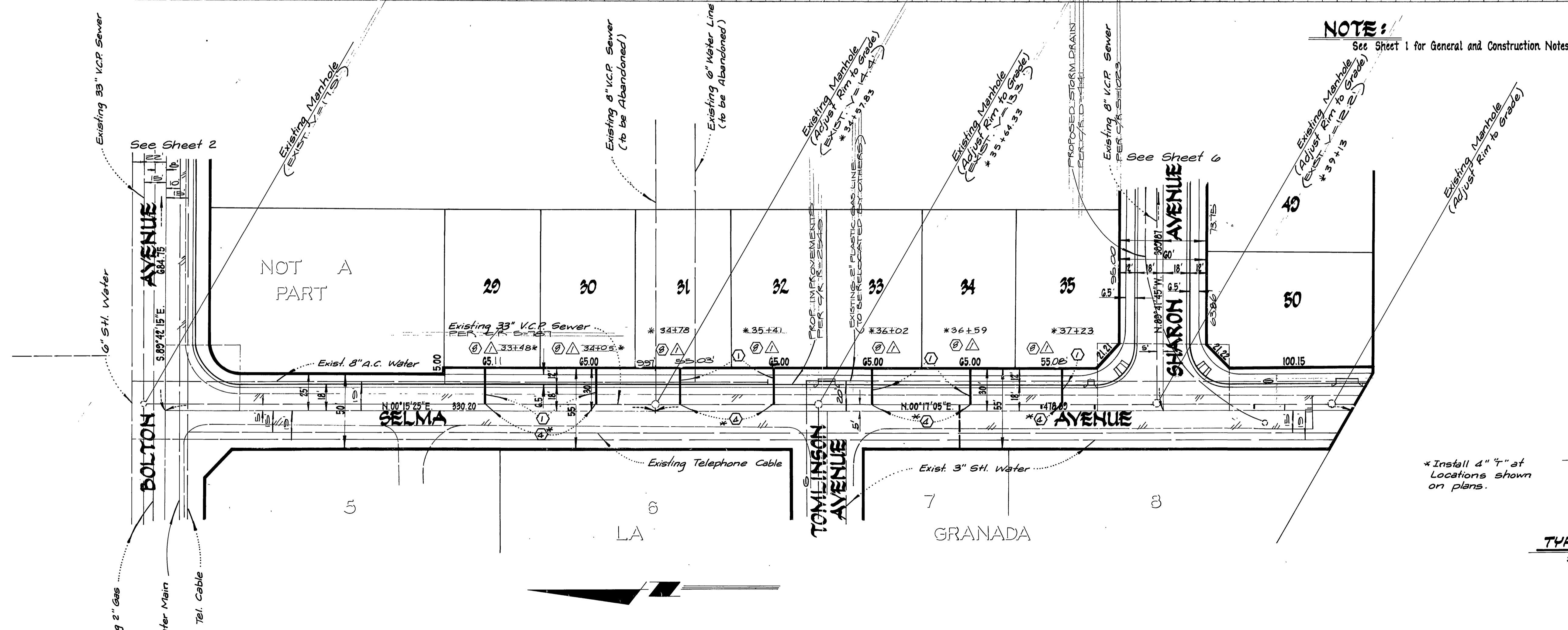
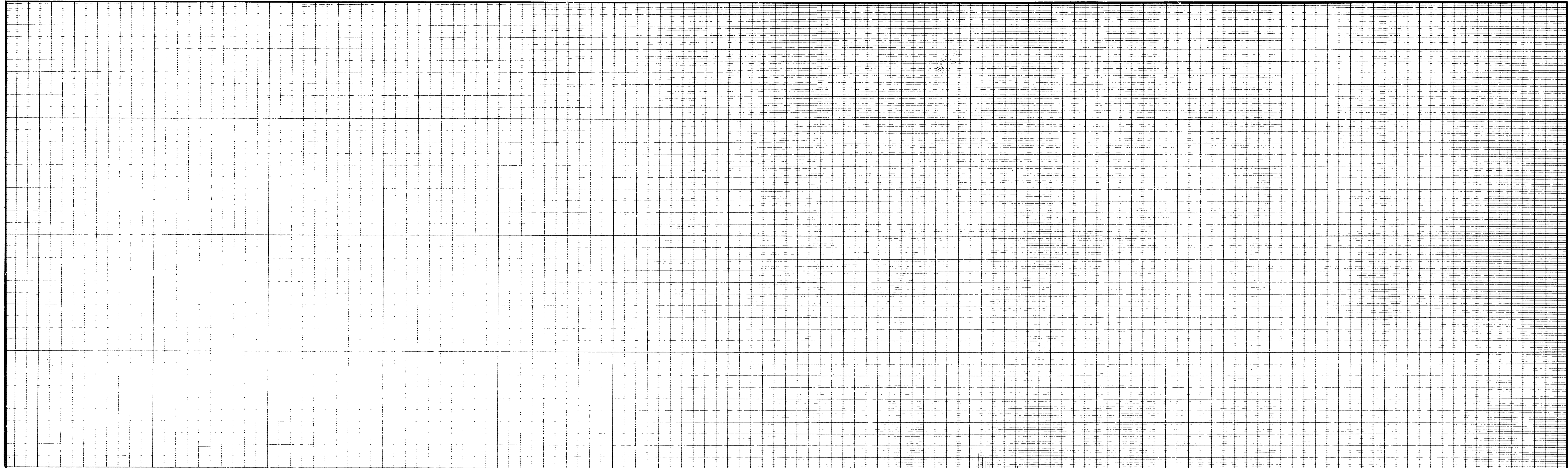
BENCH MARK:
F3-D P.K. nail in the northerly curb return at Van Buren Boulevard and California Avenue F.B. 897/70 Elevation 758.317

APPROVED BY:	BY:	DATE:	APPROVED BY:
OFFICE ENGINEER	<i>[Signature]</i>	2/2/79	<i>[Signature]</i>
PARK DEPARTMENT			DIRECTOR OF PUBLIC WORKS
TRAFFIC DIVISION			
ASSISTANT CITY ENG.	<i>[Signature]</i>	2/2/79	DATE: 2/2/79

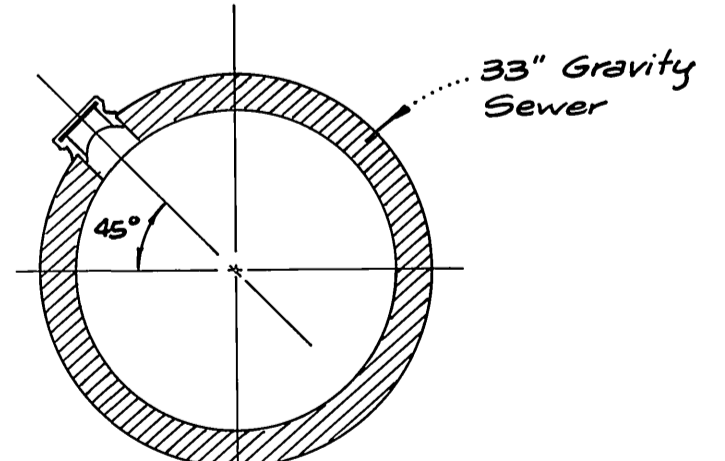
SEWER PLAN AND PROFILE
TRACT NO 10818
HARRISON AVENUE
CIRRUS WAY

INDEX UP
S-1334
SHT. 4 OF 7
W.O. 021.09-B

SCALE: HORIZ.: 1" = 40' VERT.: 1" = 4'



NOTE:
See Sheet 1 for General and Construction Notes



*Install 4" x 4" at Locations shown on plans.

TYP SADDLE SECTION
SELMA AVENUE
NO SCALE

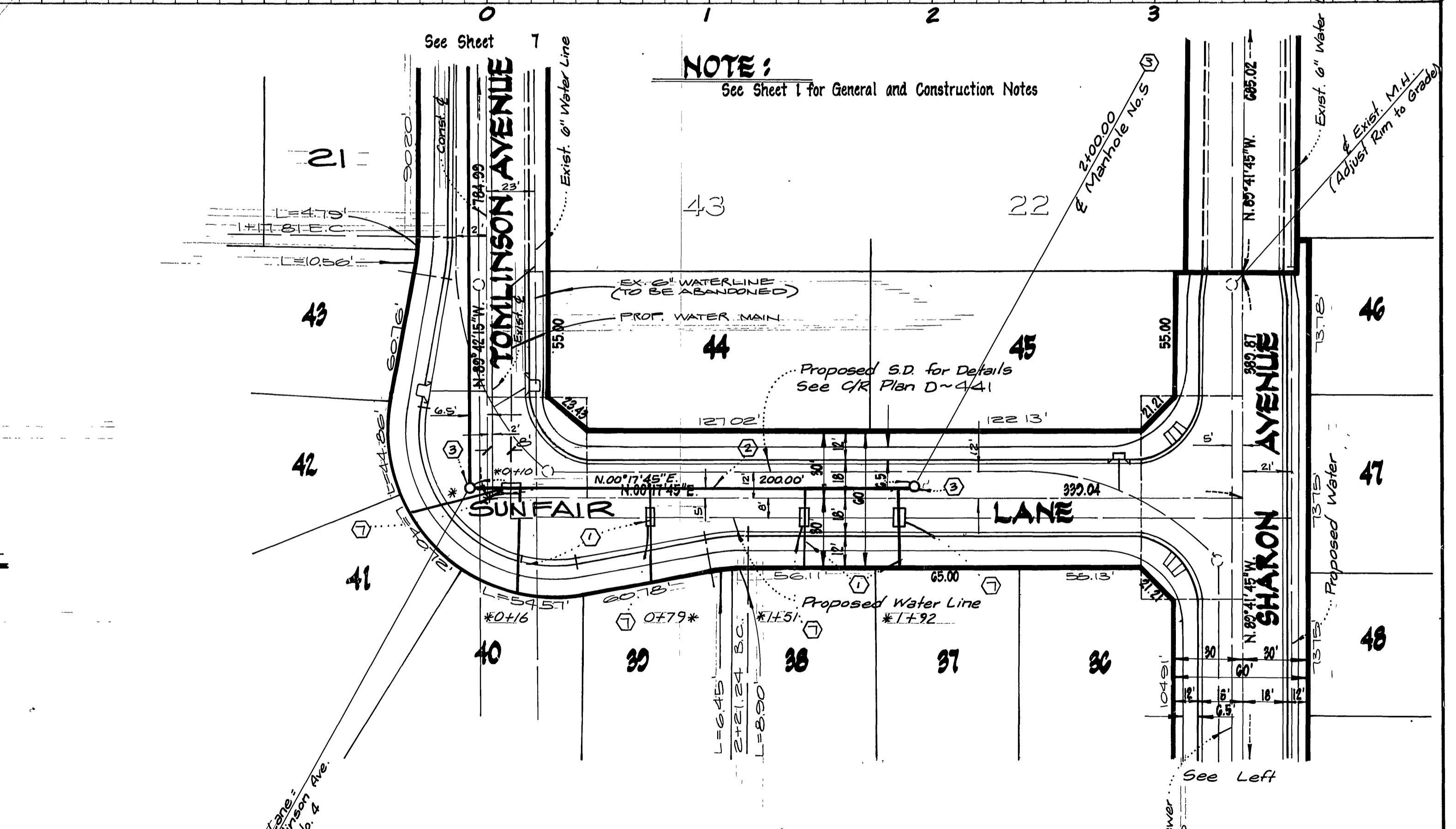
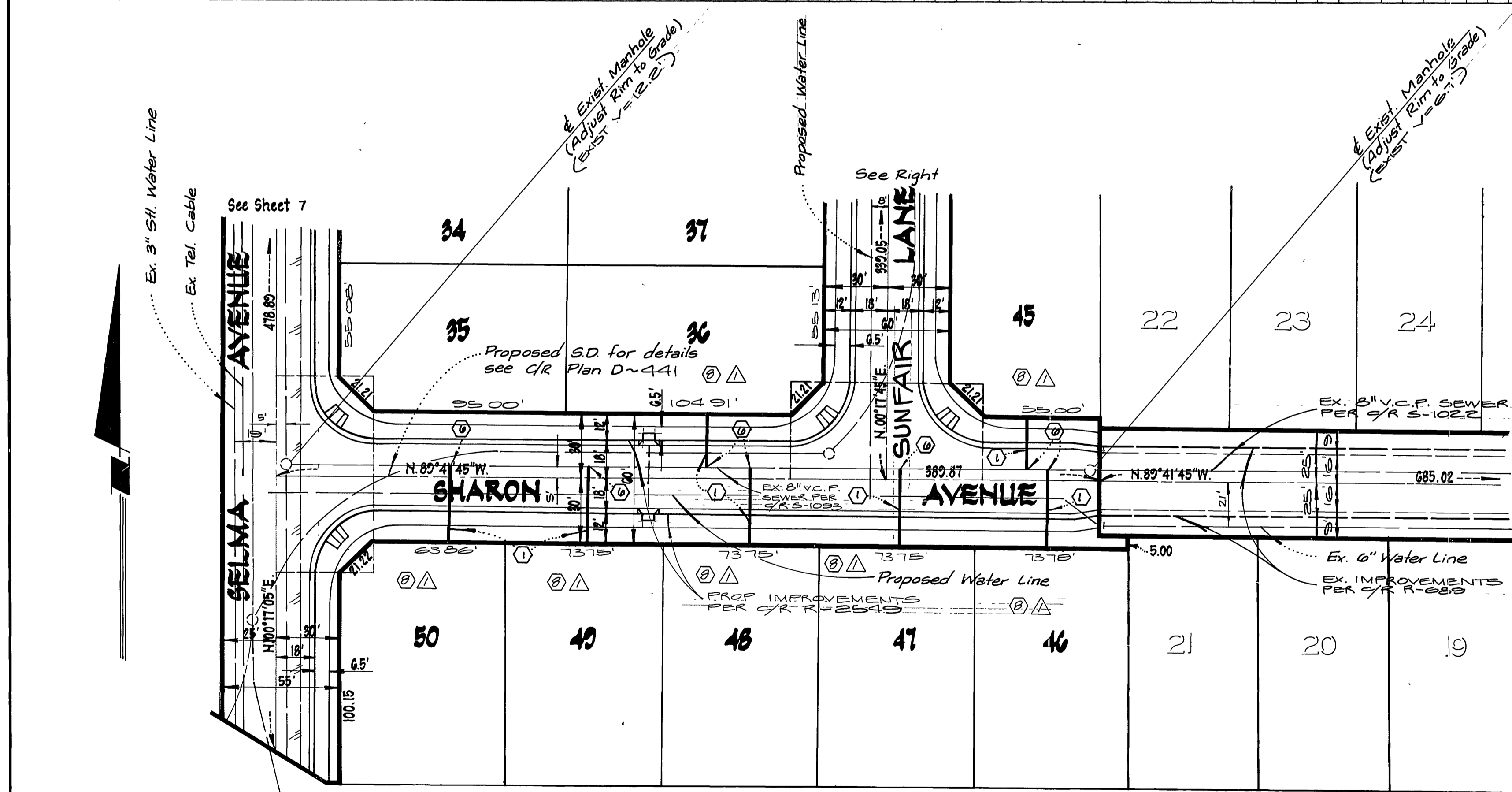
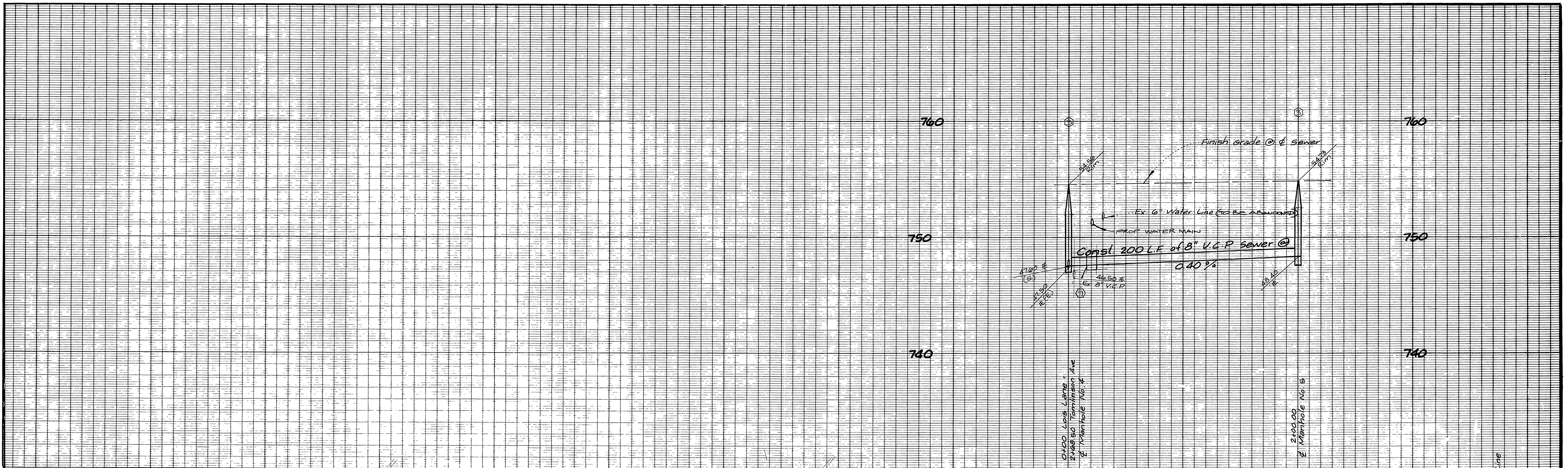
CITY OF RIVERSIDE DOMESTIC SYSTEM
Approved By: *E.L. Moore*
Chief Utilities Engineer - Water
11-16-82
DATE

L A WAINSCOTT & ASSOCIATES
CIVIL ENGINEERS
GRAND TERRACE, CALIFORNIA
(714) 824-1775
APPROVED BY *L.A. Waincott* DATE 9-29-78
R.C.E. 16056
W.D. 021.09 FOR Concordia Development F.B. 2
DESIGNED BY F.H.J.R. DRAWN BY D.K.K. CHECKED BY BERNIE
FRSD

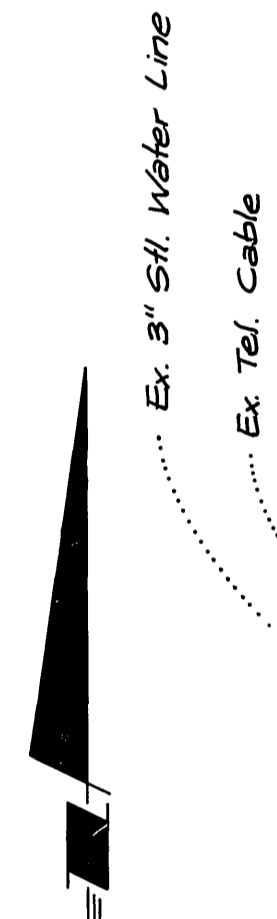
BENCH MARK
F-3-OPK nail in the northerly curb return at Van Buren Blvd. and California Avenue F.B. 837/70 Elevation 758.317

CITY OF RIVERSIDE, CALIFORNIA DEPARTMENT OF PUBLIC WORKS
APPROVED BY: *R.L. Wain*
OFFICE ENGINEER
PARK DEPARTMENT
TRAFFIC DIVISION
ASSISTANT CITY ENG.
DATE 3/29/84

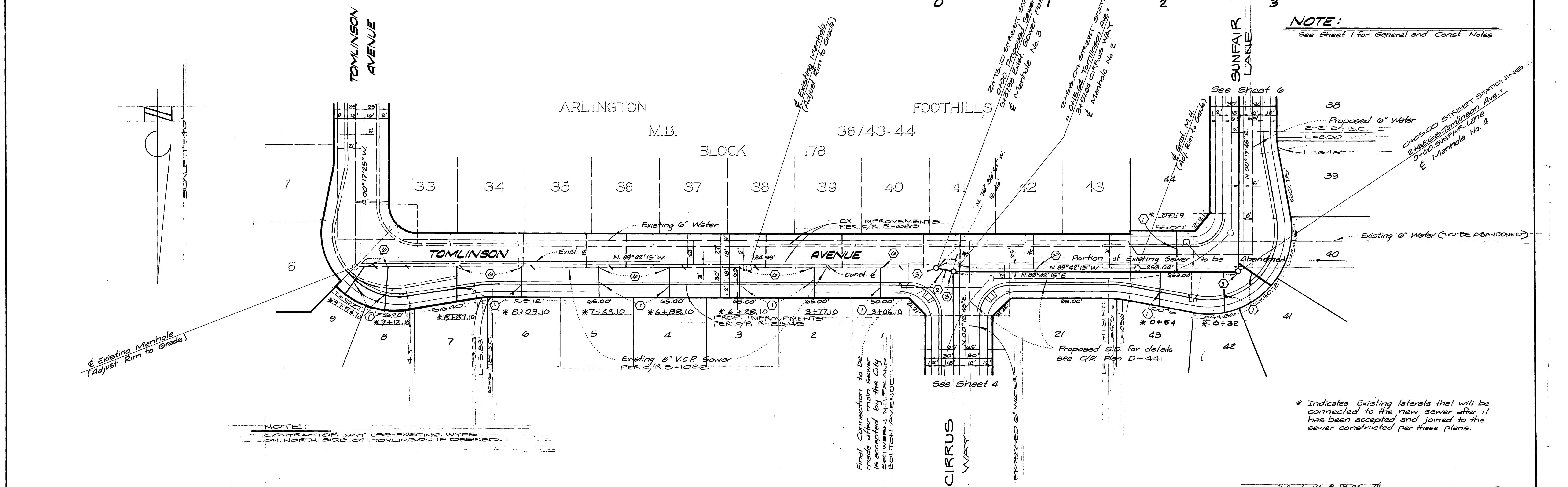
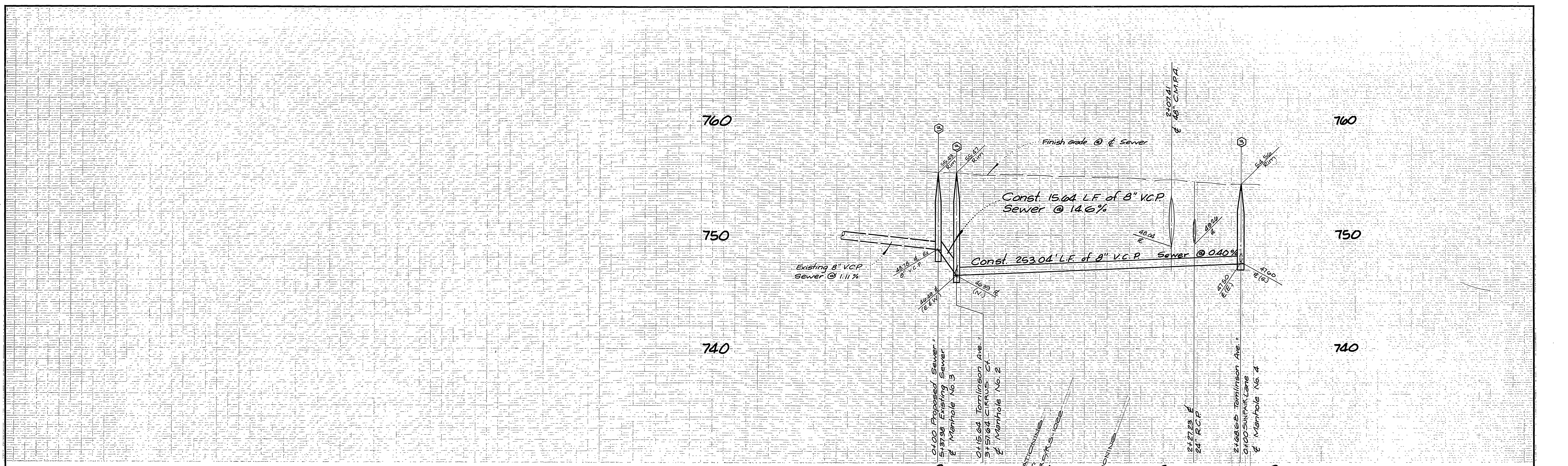
SEWER PLAN AND PROFILE
TRACT NO 10818
SELMA AVENUE
SCALE: HORIZ 1"=40' VERT 1"=4'
INDEX UP
S-1334
SHT. 5 OF 7
W.D. 021.09-B



NOTE:
See Sheet 1 for General and Construction Notes



CITY OF RIVERSIDE DOMESTIC SYSTEM Approved By: <i>[Signature]</i> Chief Utilities Engineer - Water	L A WAINSCOTT & ASSOCIATES CIVIL ENGINEERS GRAND TERRACE, CALIFORNIA (714) 824-1776 APPROVED BY: <i>[Signature]</i> DATE: 9.28.78 R.C.E. 16056	BENCH MARK F-3-D.P.K. nail in the northerly curb return at Van Duren Blvd and California Avenue F.D. 837/70 Elevation 758.31'	CITY OF RIVERSIDE, CALIFORNIA DEPARTMENT OF PUBLIC WORKS APPROVED BY: <i>[Signature]</i> OFFICE ENGINEER: <i>[Signature]</i> PARK DEPARTMENT: <i>[Signature]</i> TRAFFIC DIVISION: <i>[Signature]</i> ASSISTANT CITY ENG: <i>[Signature]</i> DATE: 2/21/84	SEWER PLAN AND PROFILE TRACT NO 10815 SHARON AVENUE SUNFAIR LANE	S-1334 SHT 6 OF 7 W.O. 021.00 ~ B



NOTE:
See Sheet 1 for General and Const. Notes

* Indicates Existing laterals that will be connected to the new sewer after it has been accepted and joined to the sewer constructed per these plans.

CITY OF RIVERSIDE DOMESTIC SYSTEM APPROVED BY: <i>[Signature]</i> CHIEF UTILITIES ENGINEER-WATER DATE: 11-16-82	L A WAINSCOTT & ASSOCIATES CIVIL ENGINEERS GRAND TERRACE, CALIFORNIA (714) 824-1775 APPROVED BY: <i>[Signature]</i> DATE: 9-29-78 R.C.E. 10056	BENCH MARK: F-3-DPK nail in the northerly curb return at Van Buren Blvd and California Avenue F.B. 837/70. Elevation 758.317	CITY OF RIVERSIDE, CALIFORNIA DEPARTMENT OF PUBLIC WORKS APPROVED BY: <i>[Signature]</i> OFFICE ENGINEER: <i>[Signature]</i> PARK DEPARTMENT: <i>[Signature]</i> TRAFFIC DIVISION: <i>[Signature]</i> ASSISTANT CITY ENG.: <i>[Signature]</i>	SEWER PLAN AND PROFILE TRACT No. 10818 TOMLINSON AVENUE SCALE: HORIZ. 1" = 40' VERT. 1" = 4' W.O. 021.09 ~ B	INDEX W/ 6-1334 SHT. 7 OF 7