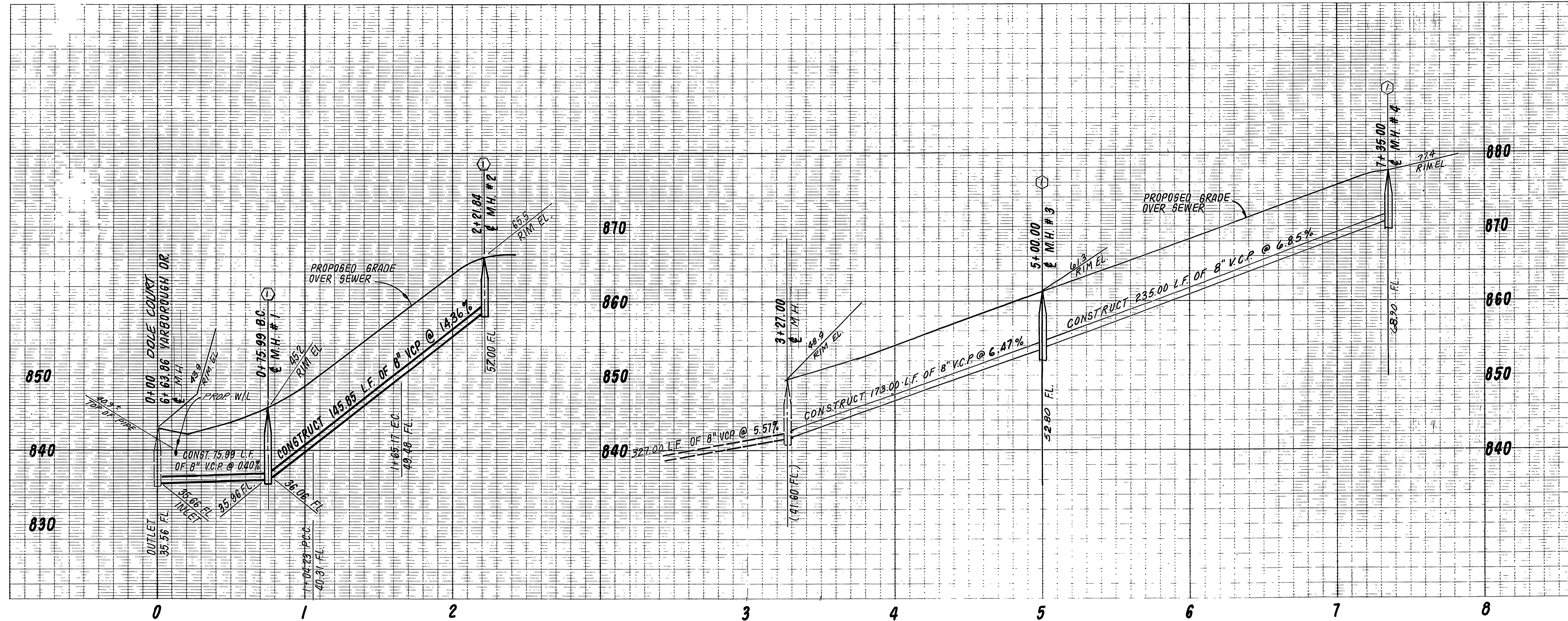


GENERAL NOTES:

- It shall be the responsibility of the contractor to clear the right of way in accordance with the provisions of law as it affects each utility including irrigation lines and appurtenances and at no cost to the city.
- Construction shall be in accordance with the City of Riverside, Department of Public Works, Standard Drawings, and the Standard Specifications for Public Works Construction, 1982 Edition.
- Location of laterals to be determined in the field at the direction of the owner. Avoid conflict with proposed and/or existing facilities.
- Contractor is to verify existing sewer elevation prior to construction.
- The sewer contractor shall adjust manholes to final grade after paving is completed.
- A plug shall be installed and will remain in place where the new sewer connects with the existing sewer until the new sewer is accepted by the city.
- Laterals to be 4" and extended to the property line.
- Manhole frames and covers to be set to proposed pavement grade.
- No finished floor elevation shall be less than 4' above the sewer flow line at point of connection without having a proper backwater valve installed in the lateral.
- The private engineer signing these plans is responsible for assuring the accuracy and acceptability of the work hereon. In the event of discrepancies arising during construction as a result of errors or omissions, the private engineer shall be responsible for determining an acceptable solution and revising the plans for approval by the city.
- For construction of laterals for lots 1 thru 4 and 11 thru 17 see City of Riverside plan S-1290.
- The contractor shall call in a location request to Underground Service Alert (USA), Phone No. 1-800-422-4133, two working days before digging. No construction permit will be issued by the Public Works Department involving excavation for underground facilities unless the applicant has provided an inquiry identification number by USA.

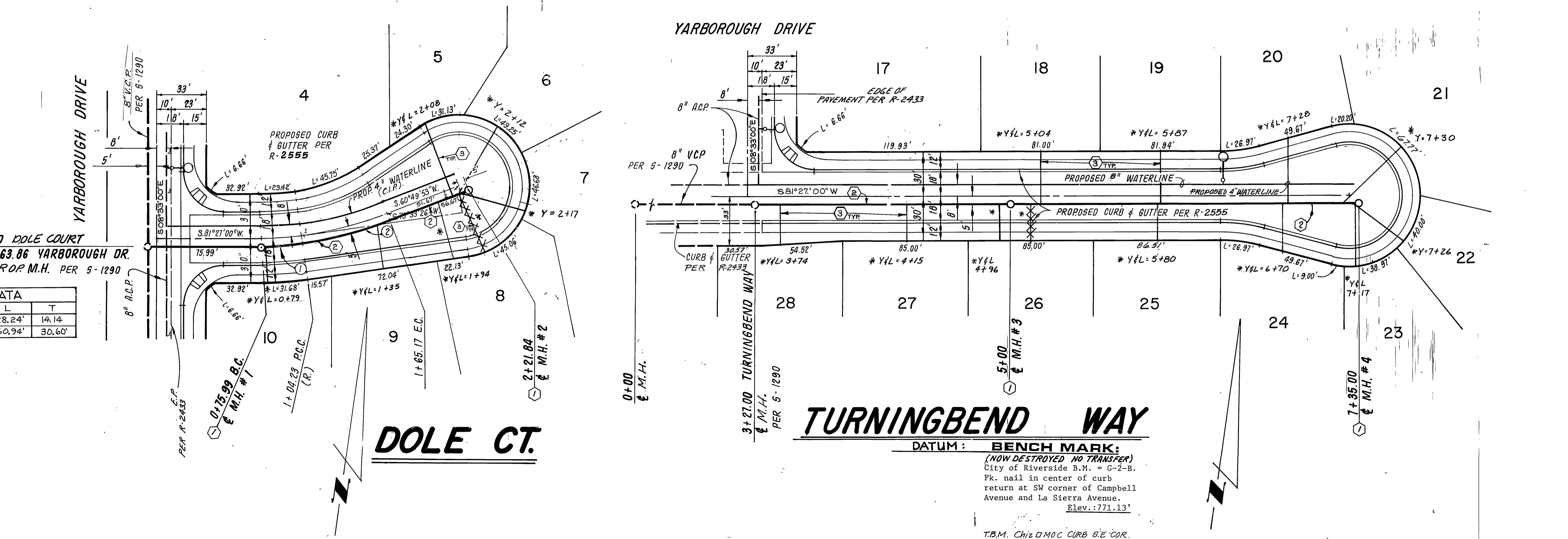
CONSTRUCTION NOTES:

- CONST. MANHOLE PER CITY/RIV. STD. DWG. NO 500
- CONST. 8" V.C.P. SEWER
- CONST. 4" V.C.P. SEWER LATERAL PER CITY/RIV. STD. DWG. NO 562

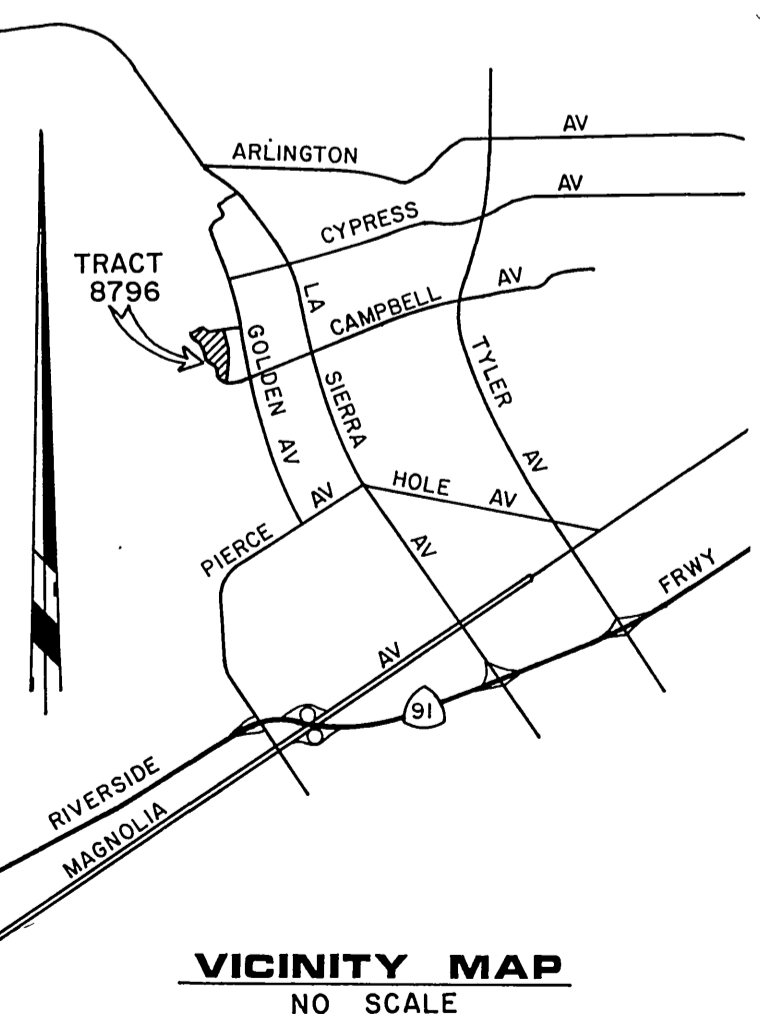


CONSTRUCTION NOTES:

- CONST. MANHOLE PER CITY/RIV. STD. DWG. NO 500
- CONST. 8" V.C.P. SEWER
- CONST. 4" V.C.P. SEWER LATERAL PER CITY/RIV. STD. DWG. NO 562



NO	R	Δ	L	T
①	205.00'	07°53'34"	28.24'	14.14'
②	274.39'	12°43'33"	60.94'	30.60'



<p>Underground Service Alert Call: TOLL FREE 1-800-422-4133 TWO WORKING DAYS BEFORE YOU DIG</p>	<p>CITY OF RIVERSIDE PUBLIC UTILITIES DEPT. DOMESTIC SYSTEM APPROVED BY: <i>[Signature]</i> R.E. No. 17550 DATE: 12-2-82 FOR: K & B</p>	<p>J. F. DAVIDSON ASSOCIATES CIVIL ENGINEERS SURVEYORS PLANNERS 3426 TENTH STREET 11200 S. MT. VERNON AVE. COLTON, CAL. APPROVED BY: <i>[Signature]</i> DATE: 8/29/83 DESIGNED BY: JLE. DRAWN BY: TTB. CHECKED BY: MM. A.</p>	<p>CITY OF RIVERSIDE, CALIFORNIA DEPARTMENT OF PUBLIC WORKS APPROVED BY: <i>[Signature]</i> PRINCIPAL ENGINEER TRAFFIC DIVISION CHIEF P.W. ENGR. WJG DATE: 1/19/84</p>	<p>SEWER PLAN & PROFILE TRACT 8796 DOLE COURT TURNINGBEND WAY HORIZ. SCALE: 1" = 40' VERT. SCALE: 1" = 8'</p>	<p>PROJECT NO. 5-1337</p>
					<p>SHEET 1 OF 1 FILE NO. 83-8024(M)</p>