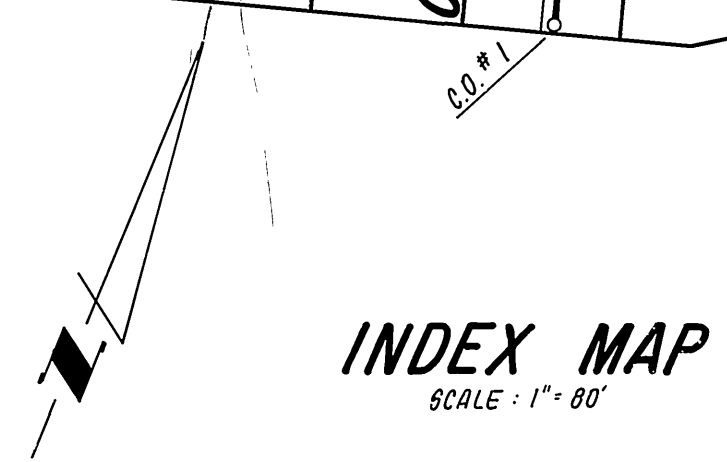
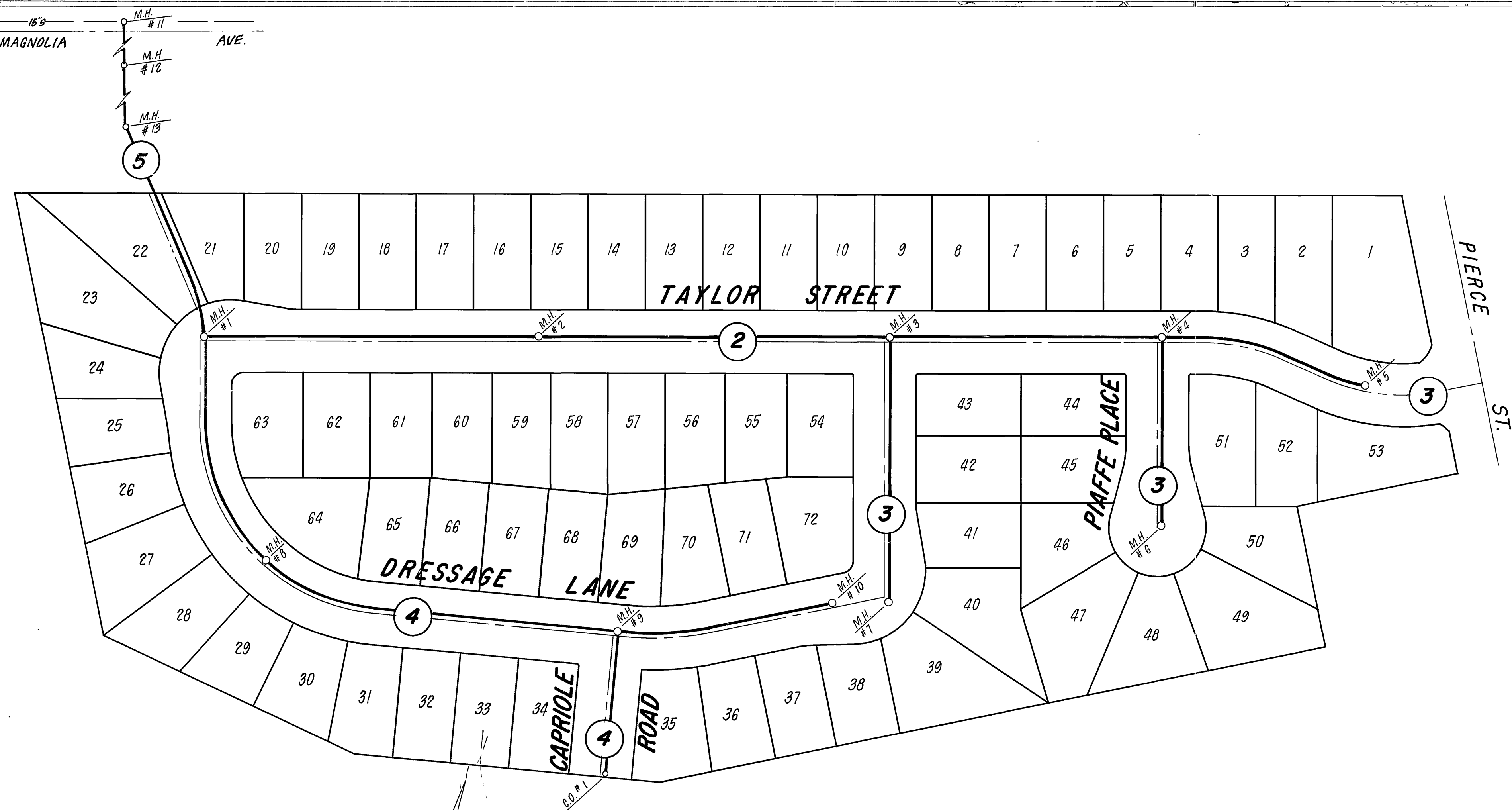


TRACT 10366

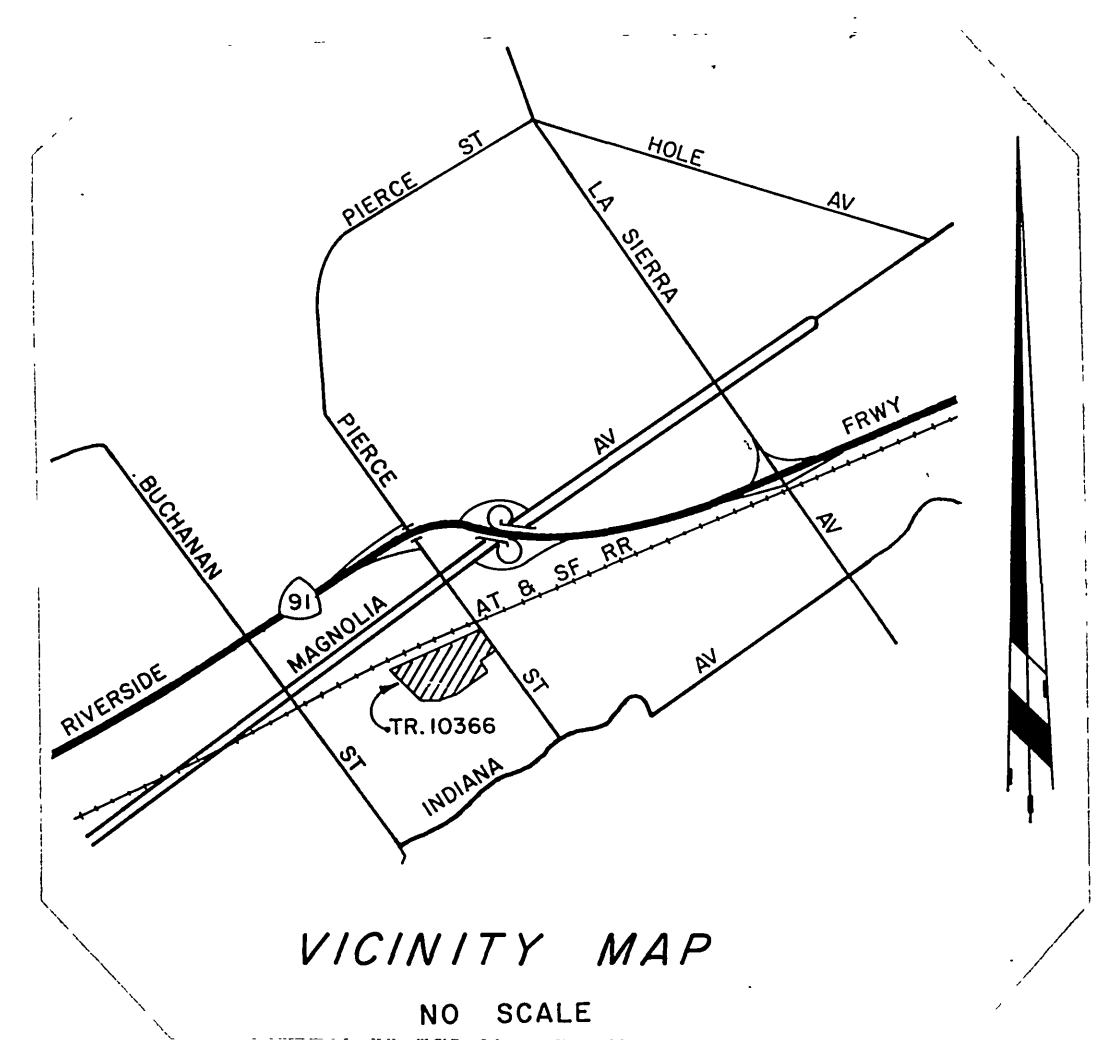
GENERAL NOTES

1. It shall be the responsibility of the contractor to clear the right of way in accordance with the provisions of law as it affects each utility including irrigation lines and appurtenances and at no cost to the city.
2. Construction shall be in accordance with the City of Riverside, Department of Public Works, Standard Drawings, and the Standard Specifications for Public Works Construction, 19th Edition.
3. Location of laterals to be determined in the field at the direction of the owner. Avoid conflict with proposed and/or existing facilities.
4. Contractor is to verify existing sewer elevation prior to construction.
5. The sewer contractor shall adjust manholes to final grade after paving is completed.
6. A plug shall be installed and will remain in place where the new sewer connects with the existing sewer until the new sewer is accepted by the city.
7. Laterals to be 4" and extended to the property line.
8. Manhole frames and covers to be set to proposed pavement grade.
9. No finished floor elevation shall be less than 4' above the sewer flow line at point of connection without having a proper backwater valve installed in the lateral.
10. The private engineer signing these plans is responsible for assuring the accuracy and acceptability of the work hereon. In the event of discrepancies arising during construction as a result of errors or omissions, the private engineer shall be responsible for determining an acceptable solution and revising the plans for approval by the city.
11. DEVELOPER AND/OR CONTRACTOR TO GIVE RCFC 5 DAYS WRITTEN NOTICE PRIOR TO STARTING WORK ON SEWER LINE WITH IN RCFC EASEMENTS ENCROACHMENT PERMIT NO.
12. LICENSING & AGREEMENTS MUST BE OBTAINED FROM THE A.T. & S.F. R.R. Co. PRIOR TO ANY CONSTRUCTION WITHIN RAILROAD R/W.



CONSTRUCTION NOTES

- ① CONSTRUCT MANHOLES PER CITY OF RIVERSIDE STD. DWG. NO. 500.
- ② CONSTRUCT CLEANOUT PER CITY OF RIVERSIDE STD. DWG. NO. 560.
- ③ CONSTRUCT 4" LATERAL PER CITY OF RIVERSIDE STD. DWG. NO. 562.

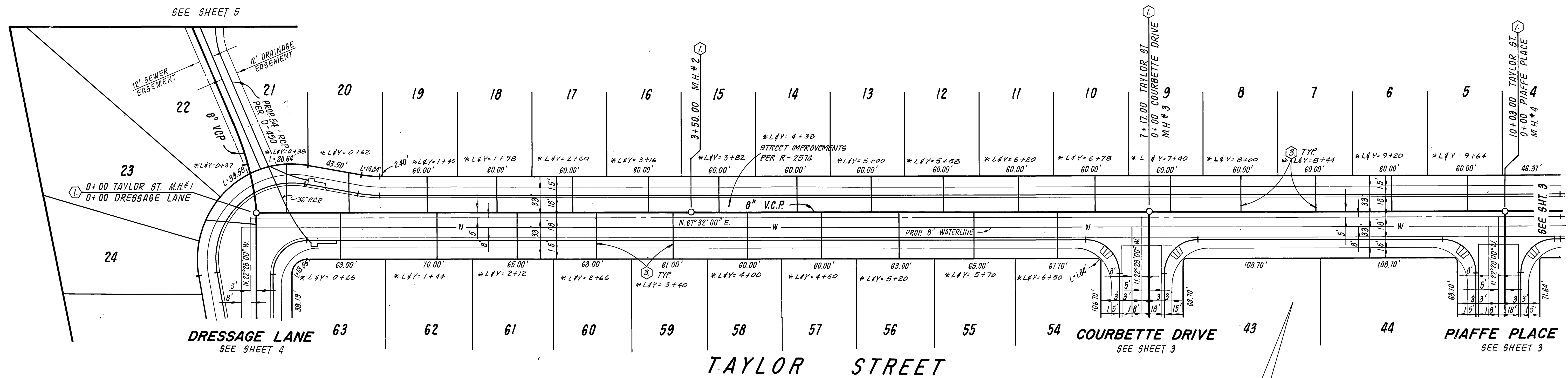
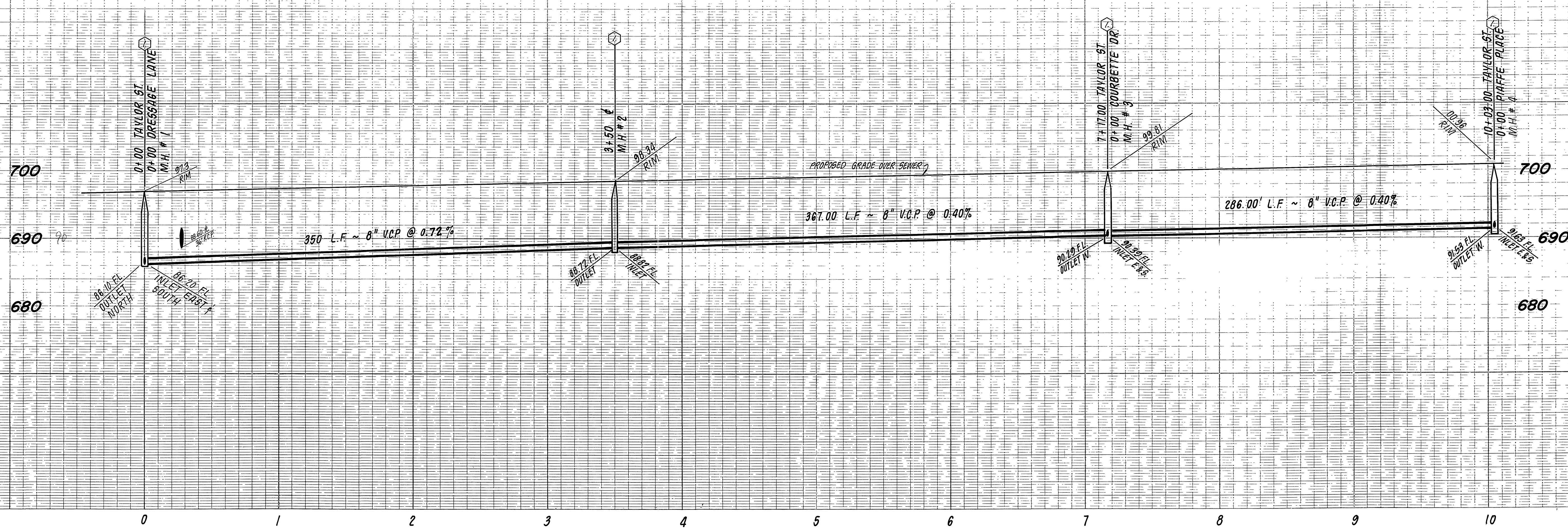


BENCH MARK
U.S.C. & G.S. B.M. K-38 1924 Disk in headwall on N.W. Cor. Fillmore and Santa Fe R.R. Tracks P.B. 706/34 Elev. 722.010

* As built 10-06-78

INDEX UP

CITY OF RIVERSIDE DOMESTIC SYSTEM Dan L. Parks CHIEF UTILITIES ENGINEER, WATER	J. F. DAVIDSON ASSOCIATES CIVIL ENGINEERS • SURVEYORS • PLANNERS 3426 TENTH STREET RIVERSIDE, CAL. 92506-0844 11200 S. MT. VERNON AVE. COLTON, CAL.	APPROVED BY: [Signature] RCE 175507 DATE 8/29/83	MARK REVISIONS APPR. DATE	CITY OF RIVERSIDE, CALIFORNIA DEPARTMENT OF PUBLIC WORKS	"TITLE SHEET" SEWER IMPROVEMENT PLANS TRACT 10366 SCALE: AS SHOWN	PROJECT NO. S-1345
				APPROVED BY: [Signature] DIRECTOR OF PUBLIC WORKS DATE 7/10/83		SHEET 1 OF 5 FILE NO. 83-7860

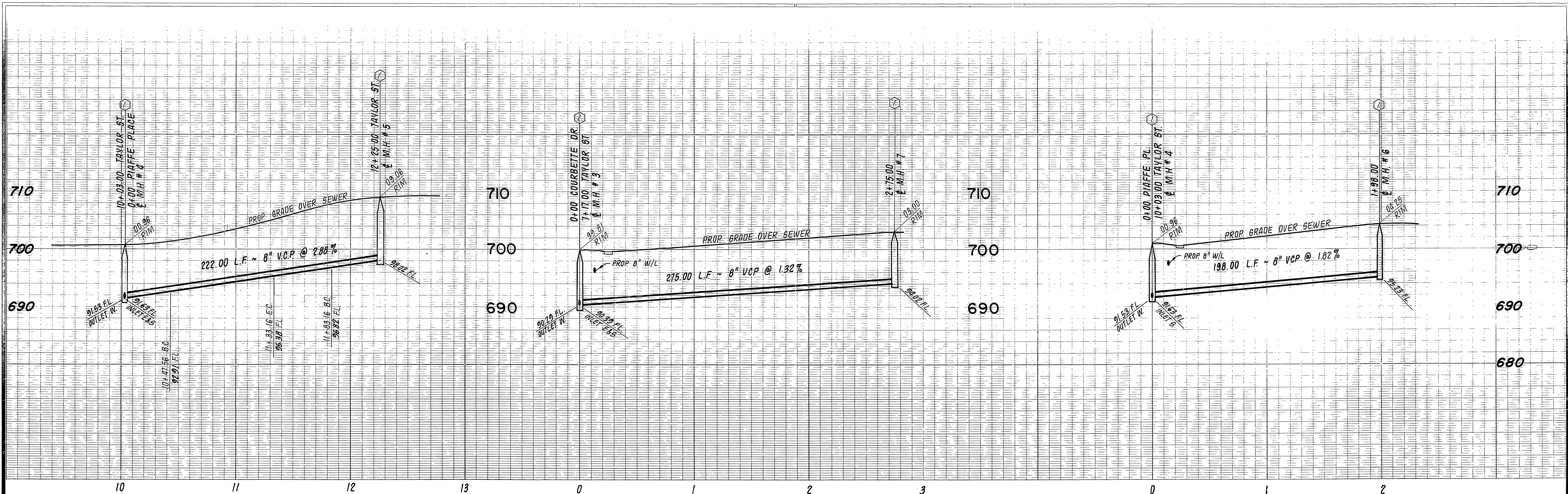


- CONSTRUCTION NOTES**
- ① CONSTRUCT MANHOLES PER CITY OF RIVERSIDE STD. DWG. NO. 500.
 - ② CONSTRUCT CLEANOUT PER CITY OF RIVERSIDE STD. DWG. NO. 560.
 - ③ CONSTRUCT 4" LATERAL PER CITY OF RIVERSIDE STD. DWG. NO. 562.

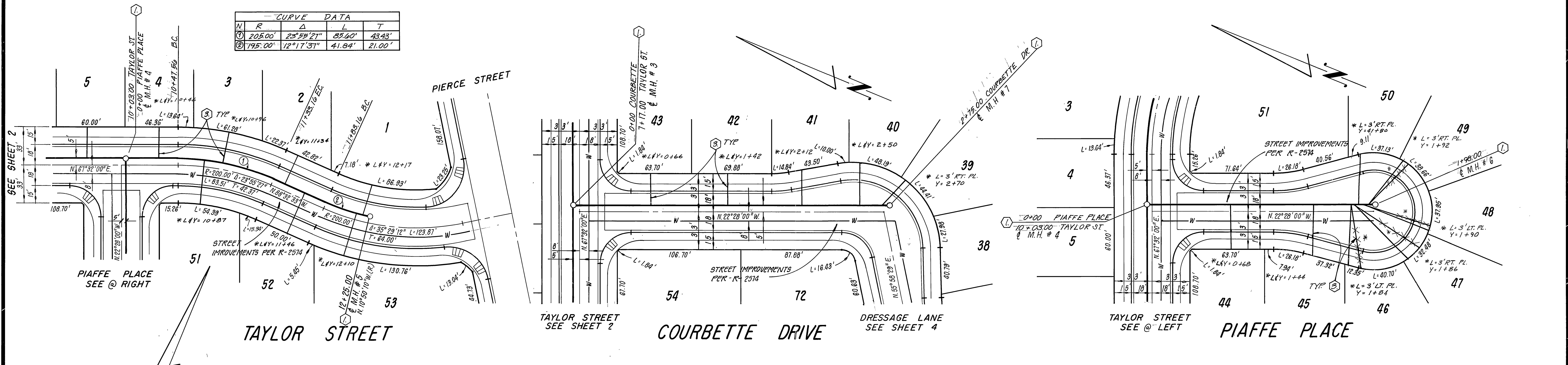
BENCH MARK
 U.S.C. & G.S. B.M. K-38 1924 Disk in
 headwall on N.W. Cor. Fillmore and
 Santa Fe R.R. Tracks F.B. 706/34
 Elev. 722.010.

*As built 10-86 TB INDEX UP

	CITY OF RIVERSIDE DOMESTIC SYSTEM <i>Van L. Paulsen</i> CHIEF UTILITIES ENGINEER, WATER DATE 2-27-88	J. F. DAVIDSON ASSOCIATES CIVIL ENGINEERS • SURVEYORS • PLANNERS 3426 TENTH STREET RIVERSIDE, CAL. 92506-0844 11200 S. MT. VERNON AVE. COLTON, CAL. APPROVED BY: <i>John W. Carty</i> 8/28/83 R.C.E. 17550 DATE	CITY OF RIVERSIDE, CALIFORNIA DEPARTMENT OF PUBLIC WORKS APPROVED BY: <i>[Signature]</i> DIRECTOR OF PUBLIC WORKS DATE 7/2/84	SEWER IMPROVEMENT PLANS TRACT 10366 TAYLOR STREET SHEET 2 OF 5 FILE NO. 83-7860	PROJECT NO. S-1345
	W.D. & F.B. 83-7860	FOR: HUMPHRIES	DESIGNED BY: E.B. DRAWN BY: T.T. CHECKED BY: M.A.	HORIZ. SCALE: 1" = 40' VERT. SCALE: 1" = 8'	FILE NO. 83-7860



CURVE DATA				
W	R	Δ	L	T
①	205.00'	25°53'21"	85.60'	43.43'
②	795.00'	12°17'37"	41.84'	21.00'

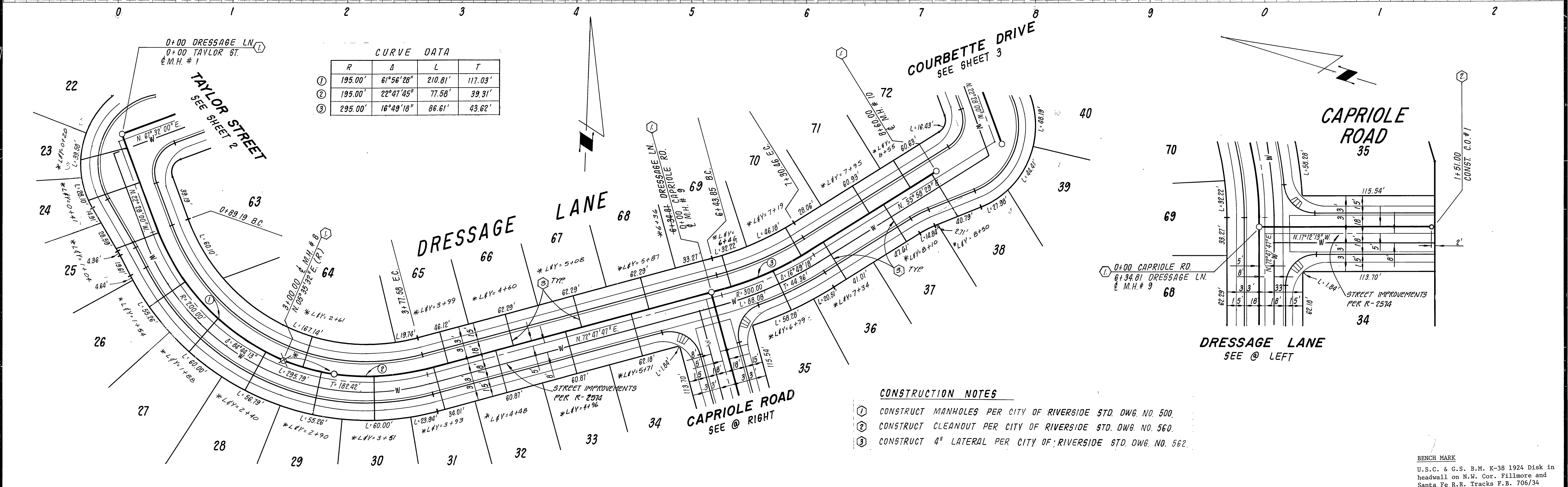
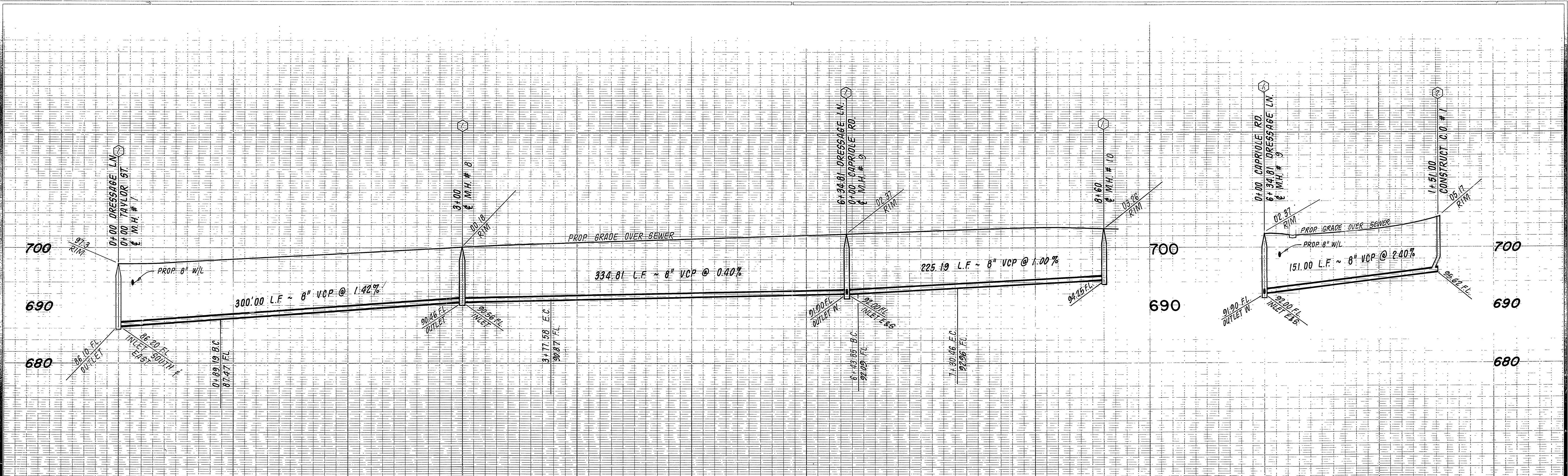


CONSTRUCTION NOTES

- ① CONSTRUCT MANHOLES PER CITY OF RIVERSIDE STD. DWG. NO. 500.
- ② CONSTRUCT CLEANOUT PER CITY OF RIVERSIDE STD. DWG. NO. 560.
- ③ CONSTRUCT 4" LATERAL PER CITY OF RIVERSIDE STD. DWG. NO. 562.

BENCH MARK
 U.S.C. & G.S. B.M. K-38 1924 Disk in
 headwall on N.W. Cor. Fillmore and
 Santa Fe R.R. Tracks F.B. 706/34
 Elev. 722.010.

<p>CITY OF RIVERSIDE DOMESTIC SYSTEM</p> <p><i>[Signature]</i> CHIEF UTILITIES ENGINEER, WATER DATE</p>	<p>J. F. DAVIDSON ASSOCIATES CIVIL ENGINEERS • SURVEYORS • PLANNERS 3426 TENTH STREET RIVERSIDE, CAL. 92504 11200 S. MT. VERNON AVE. COLTON, CAL.</p> <p>APPROVED BY: <i>[Signature]</i> 8/27/87 R.C.E. 17550 DATE</p> <p>W.O. & F.B. 83-7860 FOR: HUMPHRIES</p>	<p>CITY OF RIVERSIDE, CALIFORNIA DEPARTMENT OF PUBLIC WORKS</p> <p>APPROVED BY: <i>[Signature]</i> CHIEF P. W. ENGR. DATE 7/1/87</p>	<p>SEWER IMPROVEMENT PLANS TRACT 10366 TAYLOR ST. - PIAFFE PL. COURBETTE DR.</p> <p>HORIZ. SCALE: 1" = 40' VERT. SCALE: 1" = 8'</p>
<p>PROJECT NO. S-1345</p> <p>SHEET 3 OF 5</p> <p>FILE NO. 83-7860</p>			



CURVE DATA

	R	Δ	L	T
①	195.00'	61°56'28"	210.81'	117.03'
②	195.00'	22°47'45"	77.58'	39.31'
③	295.00'	18°49'18"	86.61'	43.82'

CITY OF RIVERSIDE
DOMESTIC SYSTEM

[Signature]
CHIEF UTILITIES ENGINEER, WATER DATE 2.27.84

J. F. DAVIDSON ASSOCIATES
CIVIL ENGINEERS • SURVEYORS • PLANNERS
3426 TENTH STREET
RIVERSIDE, CAL. 92504

APPROVED BY: *[Signature]* 8/22/83
R.C.E. 17550 DATE

W.O. & F.B. 83-7860 FOR: HUMPHRIES

CITY OF RIVERSIDE, CALIFORNIA
DEPARTMENT OF PUBLIC WORKS

APPROVED BY: *[Signature]*
DIRECTOR OF PUBLIC WORKS DATE 7/20/84

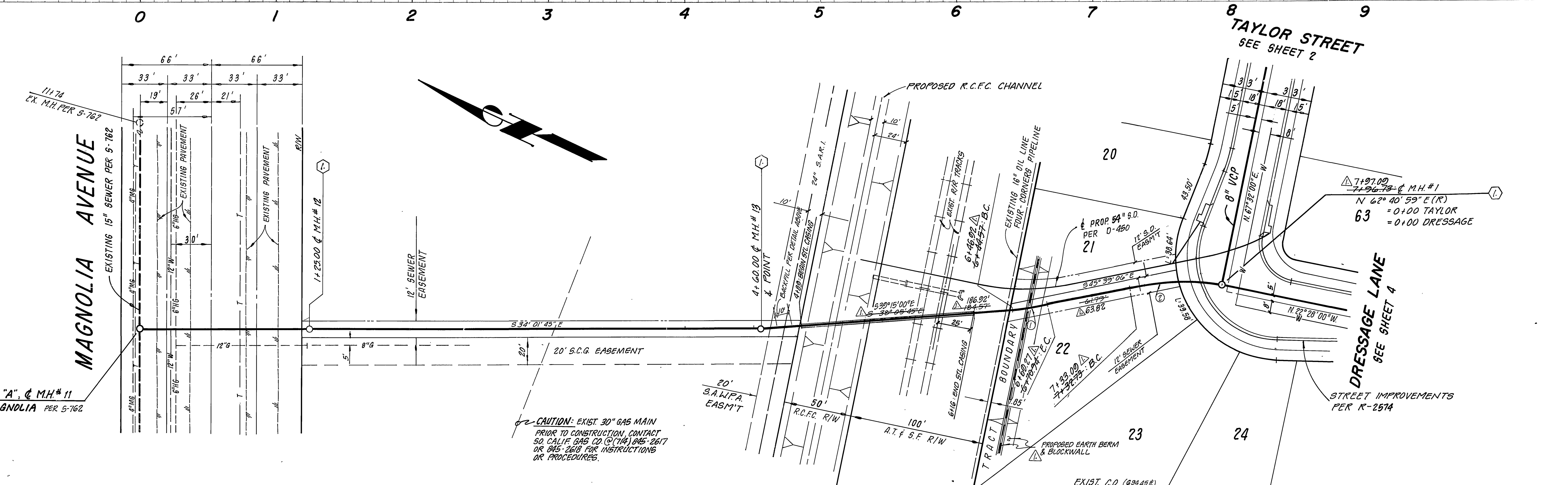
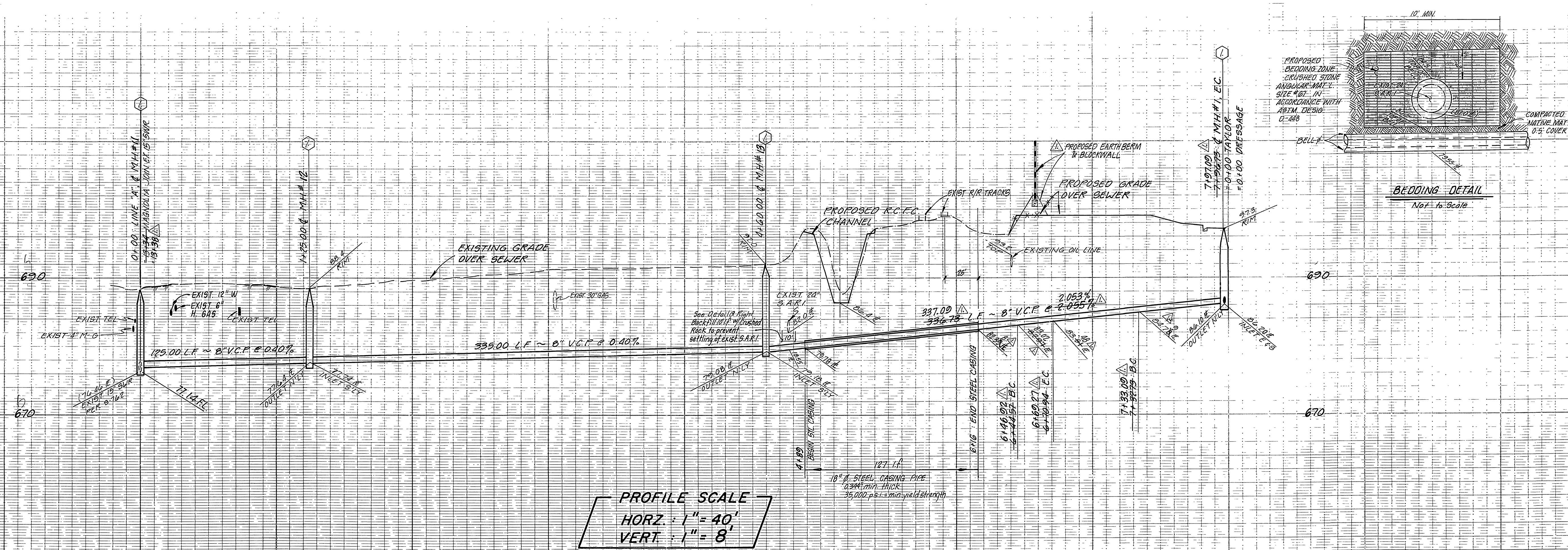
SEWER IMPROVEMENT PLANS
TRACT 10366
DRESSAGE LANE
CAPRIOLE ROAD

PROJECT NO.
S-1345

SHEET 4 OF 5

FILE NO. 83-7860

HORIZ. SCALE: 1" = 40' VERT. SCALE: 1" = 8'



CITY OF RIVERSIDE
DOMESTIC SYSTEM

SANTA ANA WATERSHED
PROJECT AUTHORITY

FOUR CORNERS
PIPE LINE CO.

APPROVED BY: *[Signature]* 2/17/84
DATE

APPROVED BY: *[Signature]* 2/17/84
DATE

APPROVED BY: *[Signature]* 3/2/84
DATE

CHIEF UTILITIES ENGINEER, WATER

DATE

DATE

SOUTHERN CALIFORNIA
GAS COMPANY

J. F. DAVIDSON ASSOCIATES
CIVIL ENGINEERS • SURVEYORS • PLANNERS

CITY OF RIVERSIDE, CALIFORNIA
DEPARTMENT OF PUBLIC WORKS

SEWER IMPROVEMENT PLANS

TRACT 10366
EASEMENT BETWEEN
MAGNOLIA AVE. & TAYLOR ST.

PROJECT NO.
S-1345
SHEET 5 OF 5
FILE NO. 83-7860

APPROVED BY: *[Signature]* 4-16-84
DATE

APPROVED BY: *[Signature]* 4-16-84
DATE

APPROVED BY: *[Signature]* 8/29/83
DATE

APPROVED BY: *[Signature]* 8/29/83
DATE

APPROVED BY: *[Signature]* 8/29/83
DATE

APPROVED BY: *[Signature]* 7/29/84
DATE

APPROVED BY: *[Signature]* 7/29/84
DATE

APPROVED BY: *[Signature]* 7/29/84
DATE

APPROVED BY: *[Signature]* 7/29/84
DATE

APPROVED BY: *[Signature]* 7/29/84
DATE

CURVE DATA

1	R=200.00'	2	R=200.00'
Δ=62°05'00"	Δ=62°05'00"	Δ=18°20'05"	Δ=18°20'05"
L=22.35'	L=22.35'	L=64.00'	L=64.00'
T=11.18'	T=11.18'	T=32.00'	T=32.00'

BENCH MARK
U.S.C. & G.S. B.M. K-38 1924 Disk in
headwall on N.W. Cor. Fillmore and
Santa Fe R.R. Tracks F.B. 706/34
Elev. 722.010.

* As built 10-86

INDEX UP