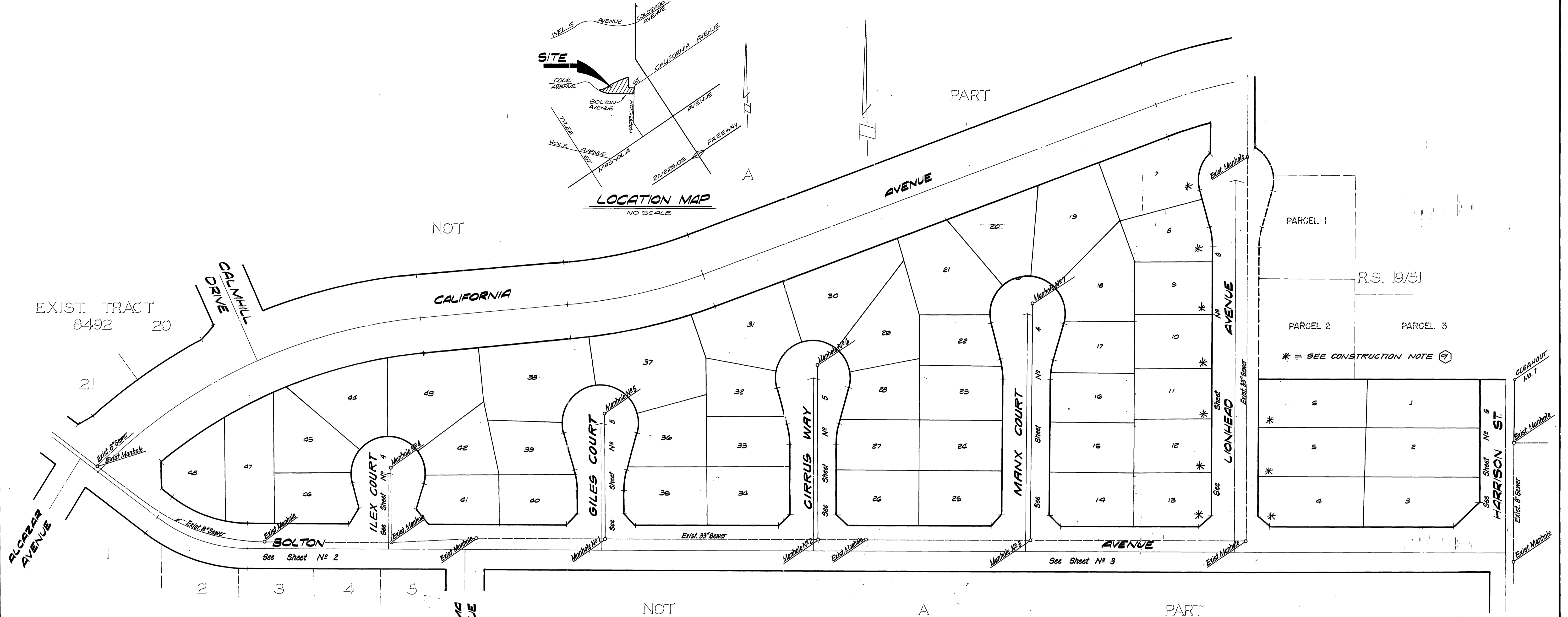


LOCATION MAP
NO SCALE

NOT



INDEX MAP
SCALE: 1"=60'

LA GRANADA BLOCK 56
M.B. 12/42-51

GENERAL NOTES

- The private engineer signing these plans is responsible for the accuracy and acceptability of the work hereon. In the event of discrepancies arising during construction, the private engineer signing these plans shall be responsible for determining an acceptable solution and revising the plans for approval by the City.
- Construction shall be in accordance with the Standard Specifications for Public Works Construction 1982 Edition and per City of Riverside Standard Drawings.
- It shall be the responsibility of the Contractor to clear the Right of Way in accordance with the provisions of law as it affects each utility including irrigation lines and appurtenances and at no cost to the City.
- Pipe shall be bedded per Case I, Standard Drawing No. 452, unless otherwise specified on the plans.
- Location of Wyes, Laterals and Saddles to be determined in the field at the direction of the owner.
- All stubs and laterals to be constructed in accordance with Standard Drawing No. 502. Stubs shall be plugged and capped.
- Manhole frames and covers to be set to final grade by Sewer Contractor after final paving of streets.
- Laterals are to be 4" V.C.P. and extended to property line.
- Prior to construction of the sewer, the Contractor is to expose the existing sewer and contact the Engineer for verification of existing location and elevation.
- Plugs shall be installed and will remain in place where the new sewer connects with the existing sewer until such time as the new sewer is accepted by the City.
- The contractor shall call in a location request to Underground Service Alert (USA) PH 1-800-482-4333. Two working days before digging. No Construction Permit issued by the Public Works Dept. involving excavation for underground facilities will be valid unless the applicant has been provided an inquiry identification number by USA.

CONSTRUCTION NOTES

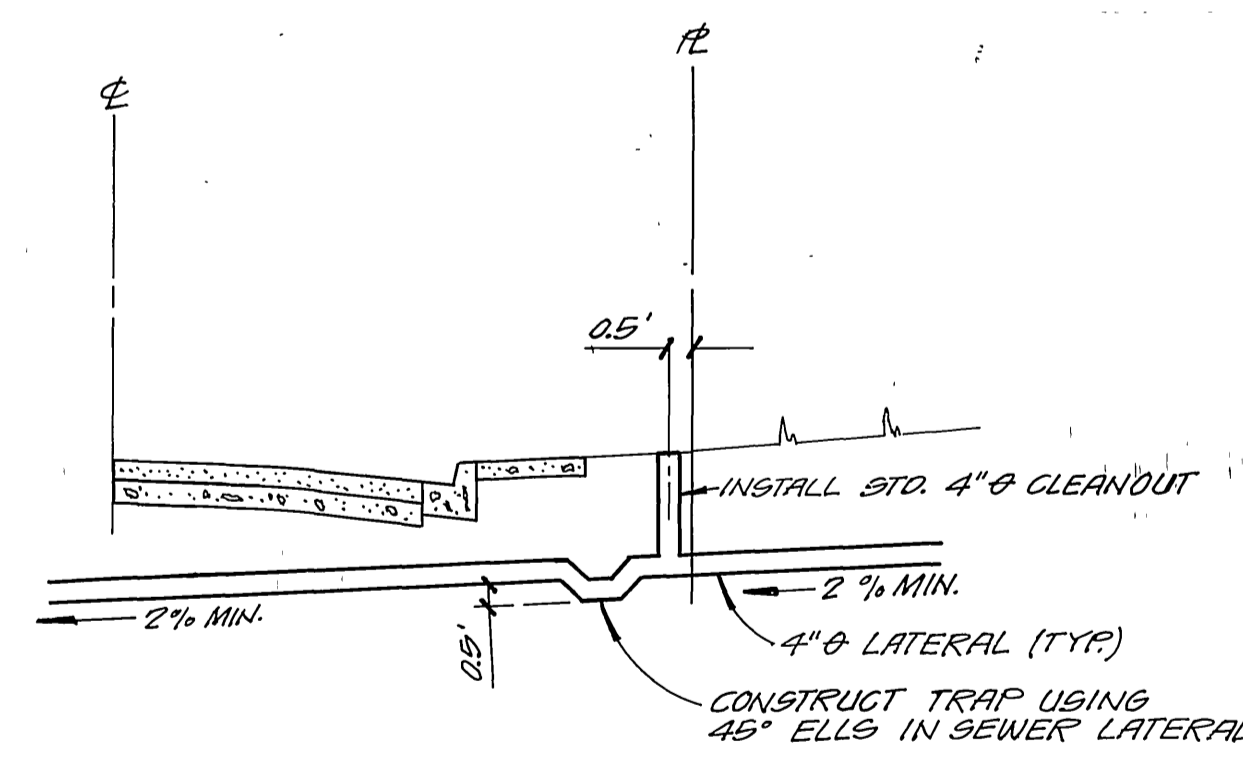
- Construct 4" V.C.P. Lateral to property line.
- Construct 8" V.C.P. Sewer Line.
- Construct Manhole per City Standard No. 500.
- Join existing 8" X 4" Wye.
- Construct 4" Lateral to join existing Chimney.
- Construct Chimney per City Standard No. 561 (All Chimneys are to be V.C.P.)
- Install 8" X 4" Saddle.
- Construct Manhole per City Standard No. 500 (5' I.D.) (Utility to coat the inside with Zebra2 compound applied per manufacturer's specifications)
- Construct House Lateral per Detail on this sheet. (Total 10 lots)
- Construct Cleanout per City Standard No. 560.

NOTICE TO CONTRACTOR

The existence and location of underground utility pipes or structures shown on these plans are obtained by a search of the available records. To the best of our knowledge there are no existing utilities except as shown on these plans. The Contractor is required to take due precautionary measures to protect the utility lines shown and any other lines not of record or not shown on these plans.

SPECIAL NOTE

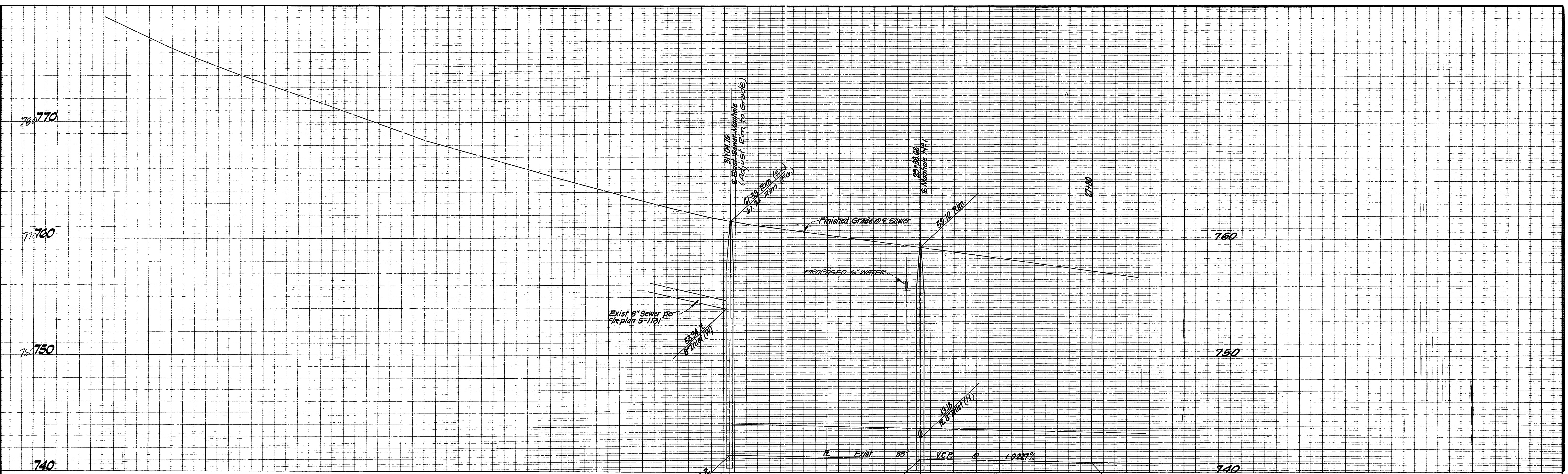
No Finish Floor elevation shall be less than 4' above the sewer flow line at point of connection without having a proper backwater valve installed in the lateral.



SPECIAL HOUSE LATERAL CONNECTION

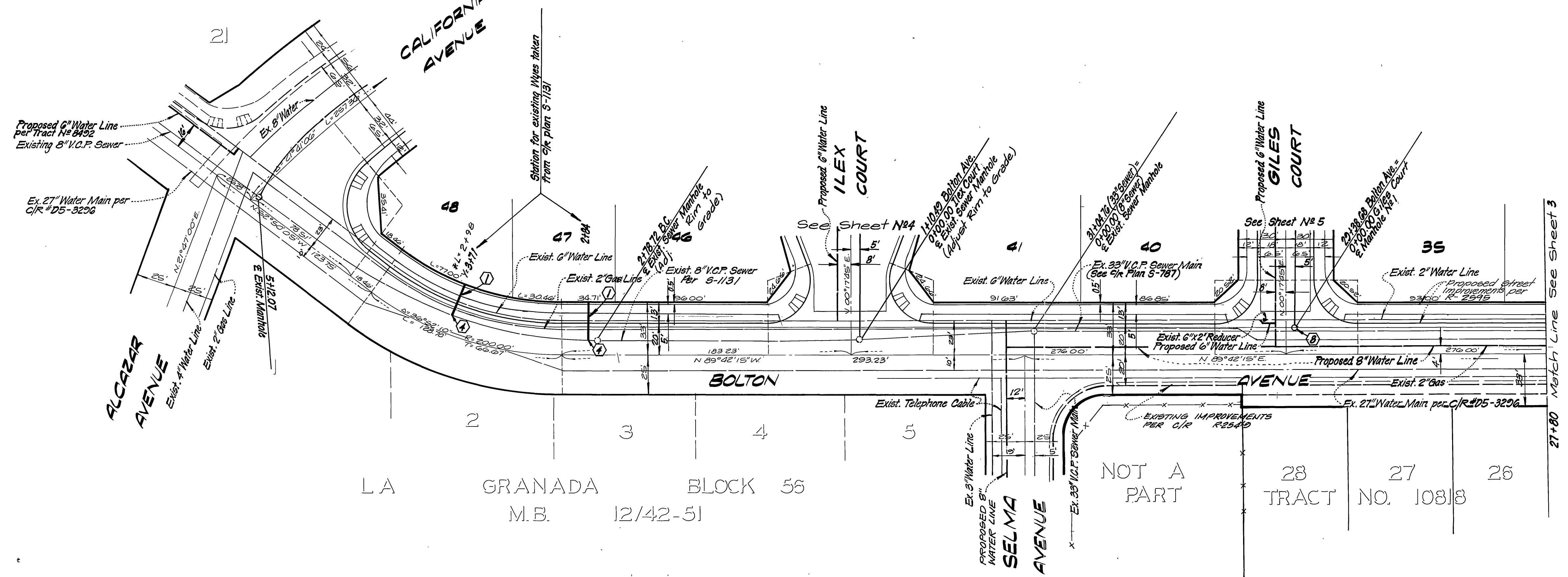
N.T.S.
FOR LOTS 4 THRU 13

SOUTHERN CALIFORNIA GAS CO. REVIEWED BY: <i>[Signature]</i> DATE: 5-18-84	CITY OF RIVERSIDE DOMESTIC SYSTEM Approved by: <i>[Signature]</i> Chief Utilities Engineer - Water	L A WAINSCOTT & ASSOCIATES CIVIL ENGINEERS GRAND TERRACE, CALIFORNIA (714) 824-1775 APPROVED BY: <i>[Signature]</i> DATE: 11-14-77 R.C.E. 10056	BENCH MARK: F-3-DPK nail in the northerly curb return at Van Buren Boulevard and California Avenue. F.B. 837/70 Elevation 758.317	CITY OF RIVERSIDE, CALIFORNIA DEPARTMENT OF PUBLIC WORKS APPROVED BY: <i>[Signature]</i> DATE: 7/20/84 DIRECTOR OF PUBLIC WORKS	SEWER PLAN AND PROFILE TRACT No. 8583 INDEX MAP SHT. 1 OF 6 W.O. 02164-B
	DESIGNED BY: PH. DRAWN BY: PH. JR. CHECKED BY: R.B.	MARK REVISIONS APPR. DATE	SCALE: AS SHOWN	INDEX W.F.	* As built 11/86 TC



NOTE:
See Sheet 1 for General and Construction Notes

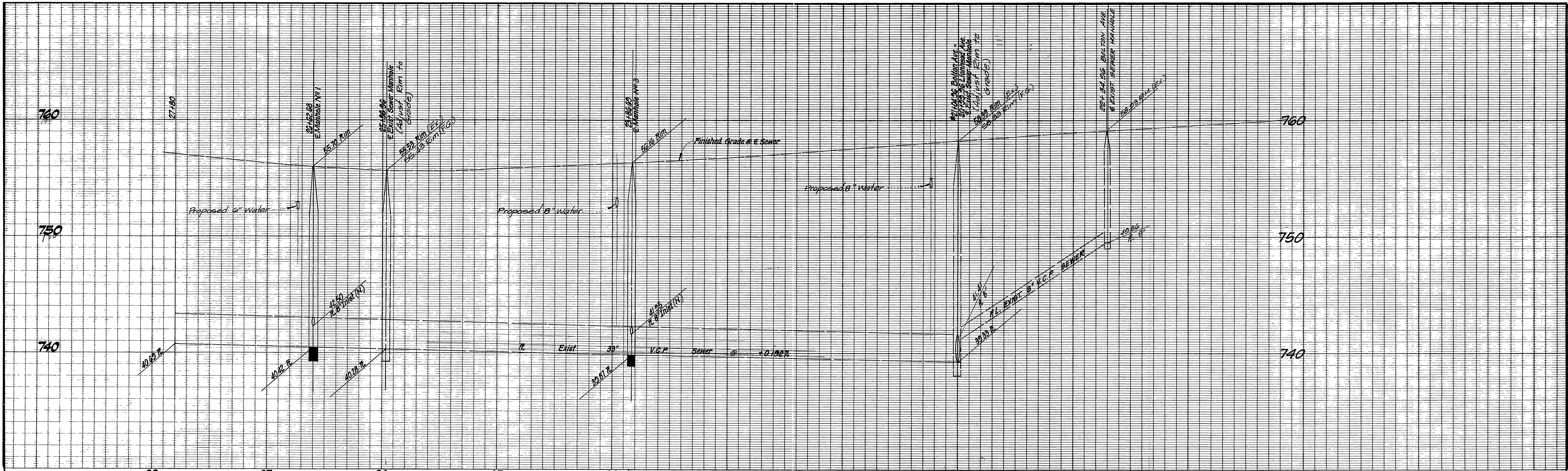
PROPOSED TRACT 8492



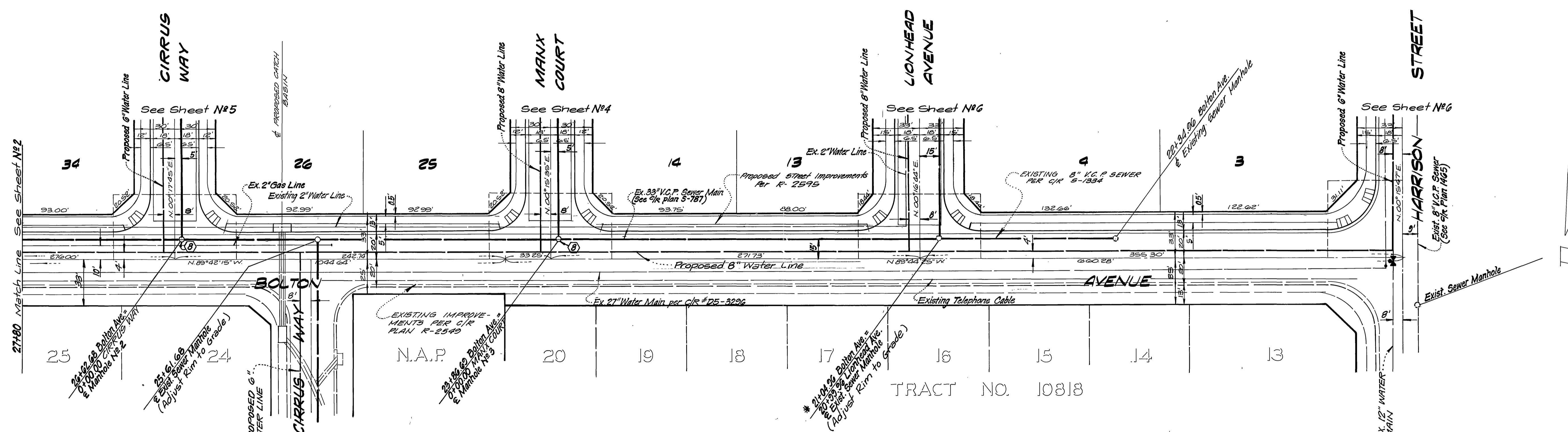
LA GRANADA BLOCK 56
M.B. 12/42-51

21+80 Match Line See Sheet 3

SOUTHERN CALIFORNIA GAS CO. Approved by: Chief Utilities Engineer - Water DATE 5-18-84	CITY OF RIVERSIDE DOMESTIC SYSTEM Approved by: Chief Utilities Engineer - Water DATE 11-14-77	L A WAINCOTT & ASSOCIATES CIVIL ENGINEERS GRAND TERRACE, CALIFORNIA (714) 824-1775 APPROVED BY L. A. Waincott DATE 11-14-77 R.C.E. 16056	BENCH MARK: F-3-DPK nail in the northerly curb return at Van Buren Boulevard and California Avenue, FB 837/10 Elevation 758.317	CITY OF RIVERSIDE, CALIFORNIA DEPARTMENT OF PUBLIC WORKS APPROVED BY: DIRECTOR OF PUBLIC WORKS DATE 7/20/84	SEWER PLAN AND PROFILE TRACT No. 8583 BOLTON AVENUE SHT. 2 OF 6 W.O. 021.64-B	SCALE: HORIZ. 1"=40' VERT. 1"=4' INDEX W/P

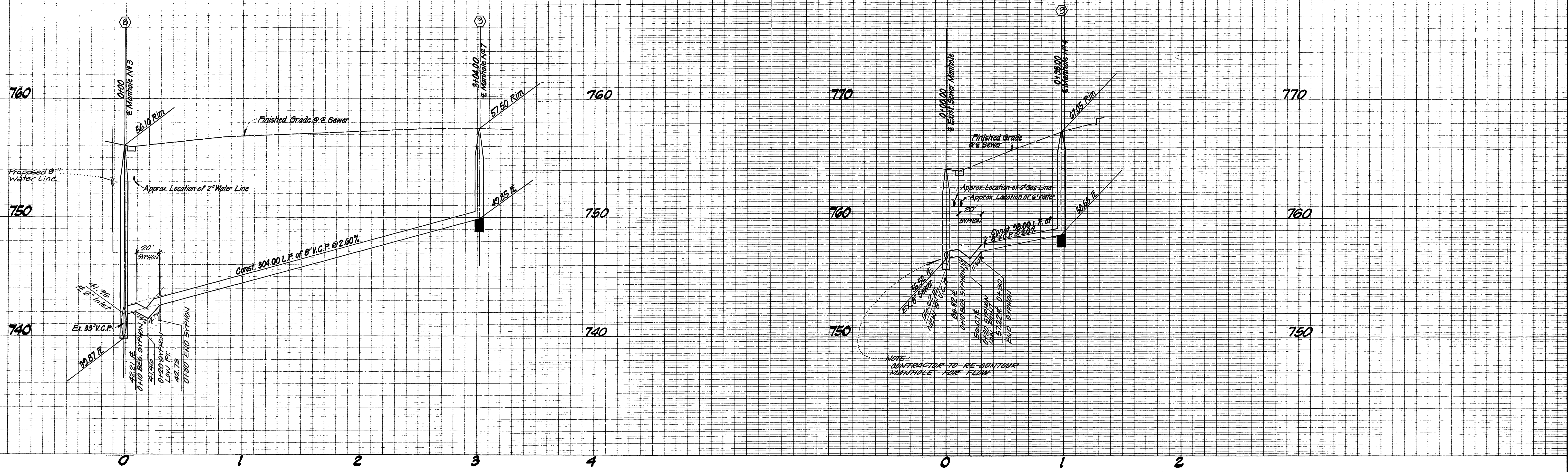


NOTE:
See Sheet 1 For General and Construction Notes

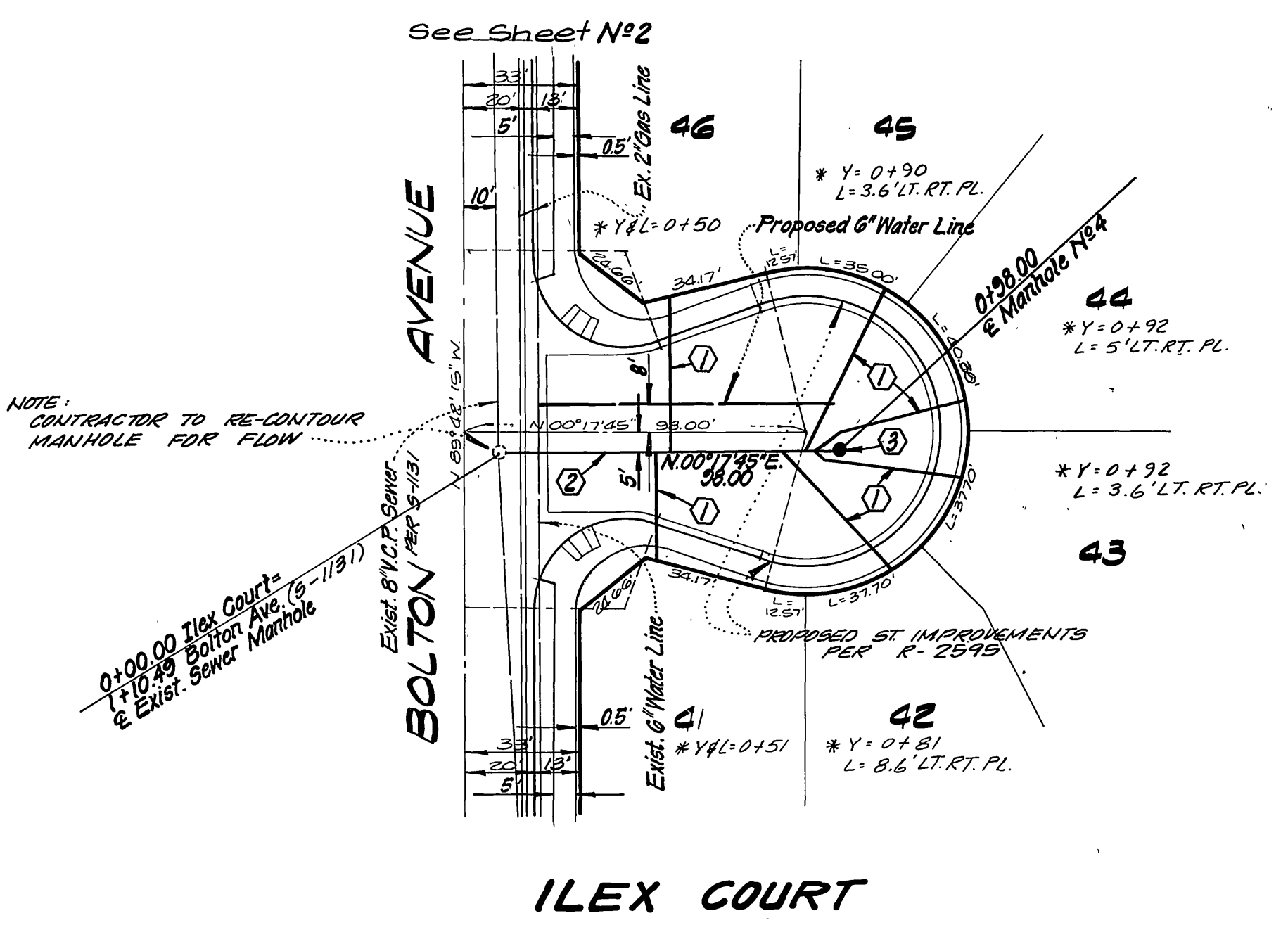
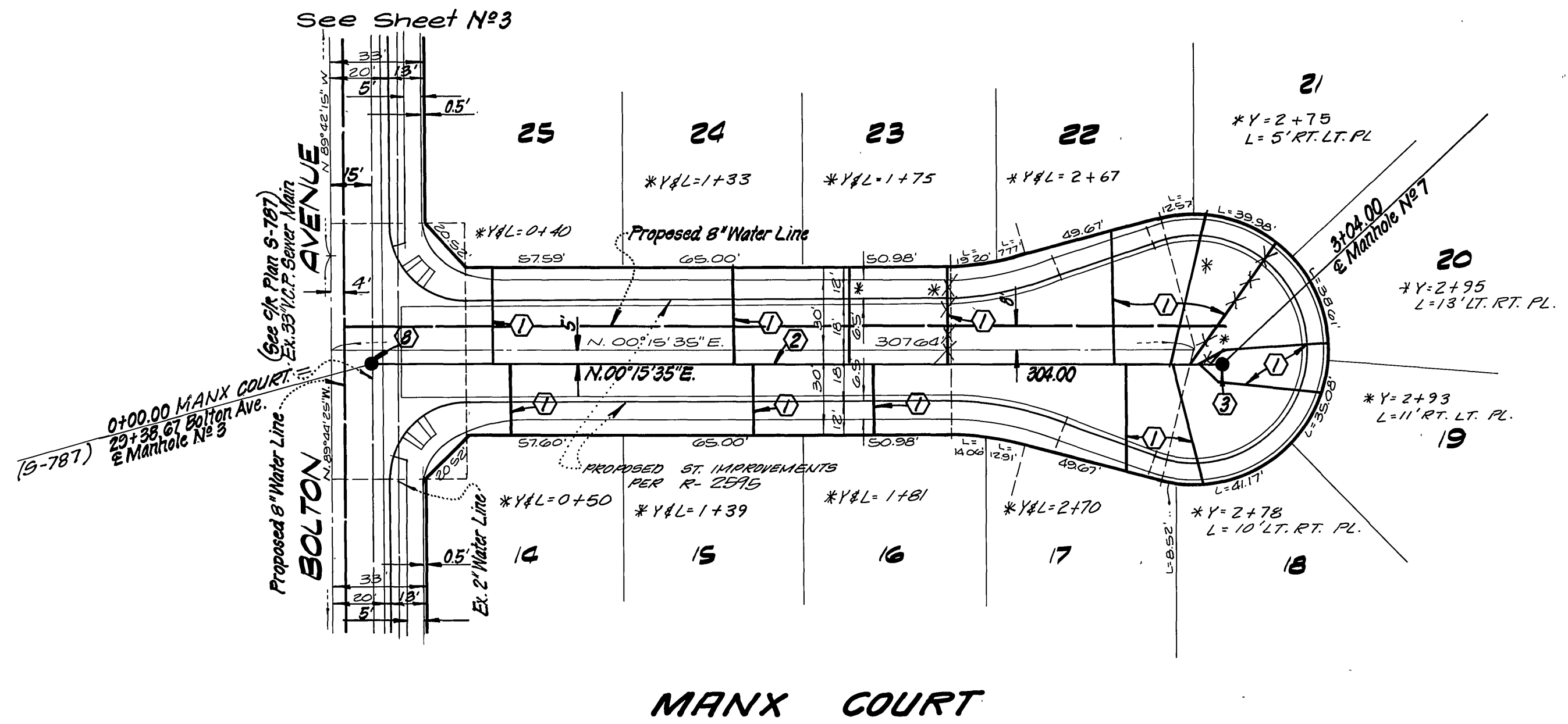


* Indicates Stationing per City of Riverside Plan No. 5-787

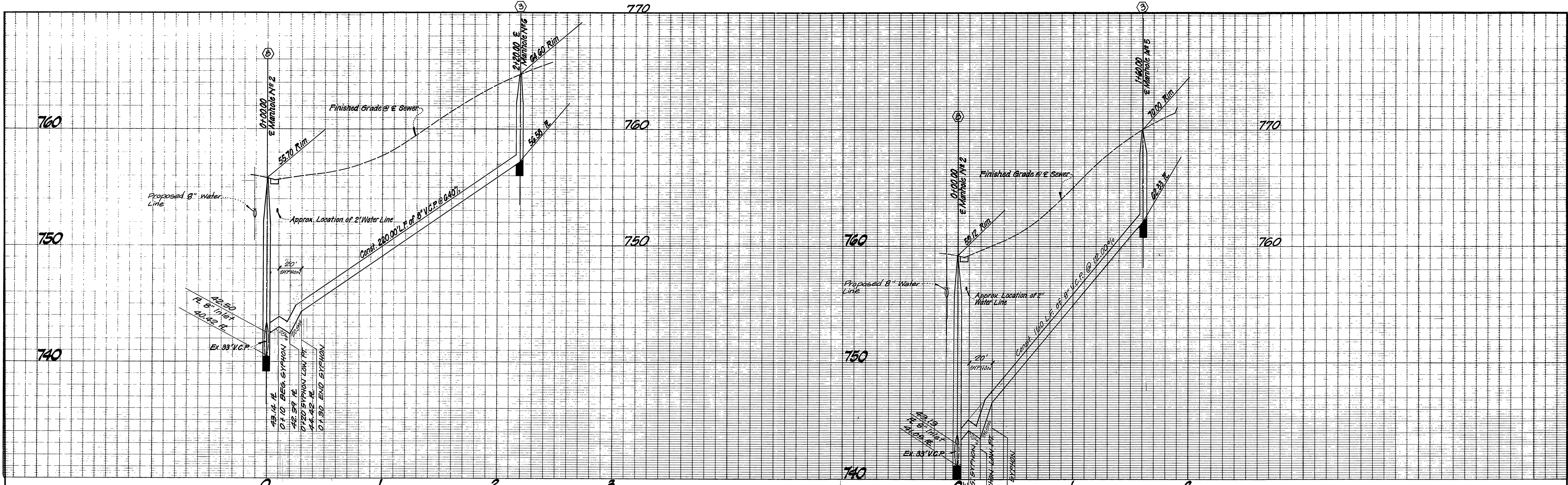
CITY OF RIVERSIDE DOMESTIC SYSTEM Approved by: <i>Don L. Park</i> Chief Utilities Engineer - Water Date: 7-8-84	L. A. WAINSCOTT & ASSOCIATES CIVIL ENGINEERS GRAND TERRACE, CALIFORNIA (714) 824-1775 APPROVED BY: <i>L. A. Waincott</i> DATE: 11-17-77 R.C.E. 10056	BENCH MARK: F-3-DPK. nail in the northerly curb return at Van Buren Boulevard and California Avenue. F.B. 837/70 Elevation 758.317	CITY OF RIVERSIDE, CALIFORNIA DEPARTMENT OF PUBLIC WORKS		SEWER PLAN AND PROFILE TRACT No. 8583 BOLTON AVENUE	5-1357 SHT. 3 OF 6 W.O. 02164-B
			APPROVED BY: <i>John C. Wade</i> CHIEF PUBLIC WORKS ENGINEER DATE: 7/20/84	SCALE: HORIZ. 1"=80' VERT. 1"=4'		



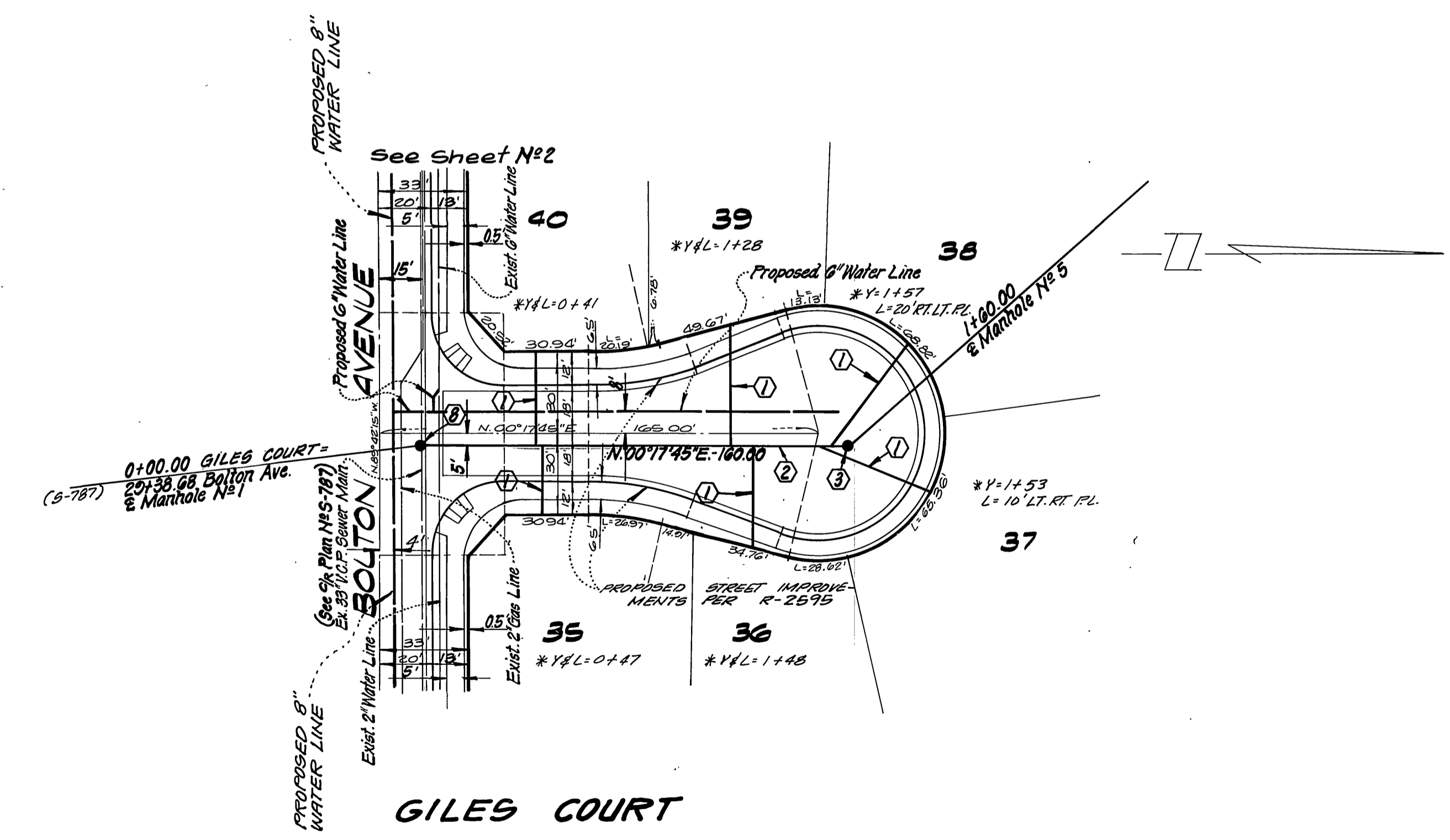
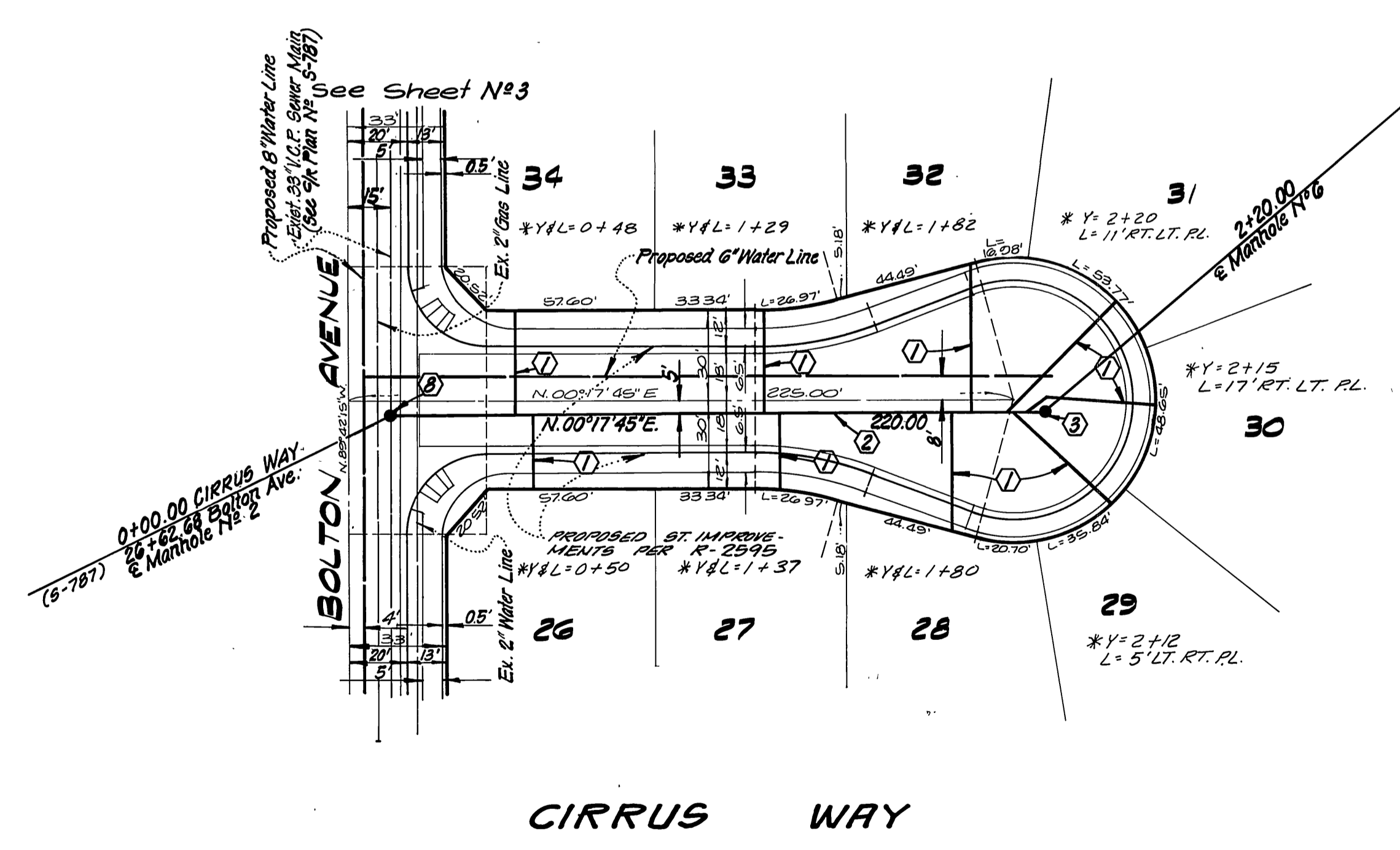
NOTE:
See Sheet 1 For General And Construction Notes



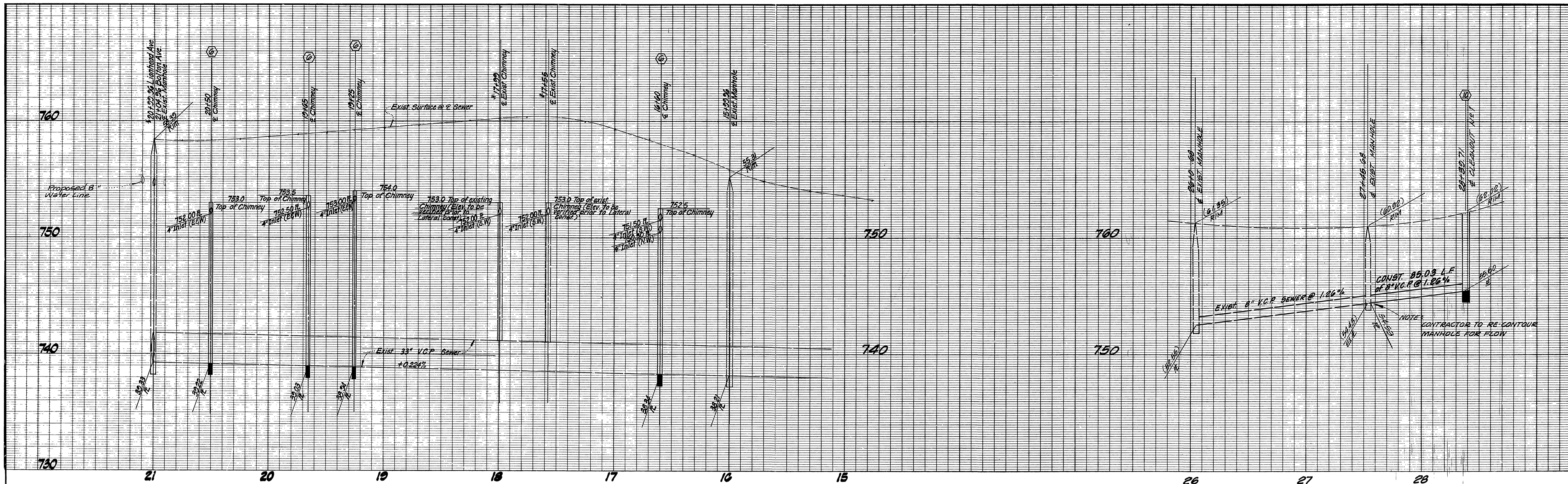
CITY OF RIVERSIDE DOMESTIC SYSTEM Approved by: <i>[Signature]</i> Chief Utilities Engineer - Water Date: 5-18-84		L A WAINSCOTT & ASSOCIATES CIVIL ENGINEERS GRAND TERRACE, CALIFORNIA (714) 824-1775 APPROVED BY: <i>[Signature]</i> DATE: 11-17-77 R.C.E. 16056		BENCH MARK: F-3-D Pk. nail in the northerly curb return at Van Buren Boulevard and California Avenue. F.B. 83770 Elevation 758.317		CITY OF RIVERSIDE, CALIFORNIA DEPARTMENT OF PUBLIC WORKS APPROVED BY: <i>[Signature]</i> DATE: 7/20/84 DIRECTOR OF PUBLIC WORKS		*As built to 11/86 INDEX W SEWER PLAN AND PROFILE S-1357 TRACT No. 8583 MANX COURT ILEX COURT SHT. 4 OF 6 SCALE: HORIZ. 1"=40' VERT. 1"=4' W.O. 02169-B	
SOUTHERN CALIFORNIA GAS COMPANY Reviewed by: <i>[Signature]</i> Date: 5-18-84		W.O. 02169 FOR R&L Development F.B. 1		DESIGNED BY: P.H. DRAWN BY: P.H.JR. CHECKED BY: R.S.		DATE: 7/20/84			



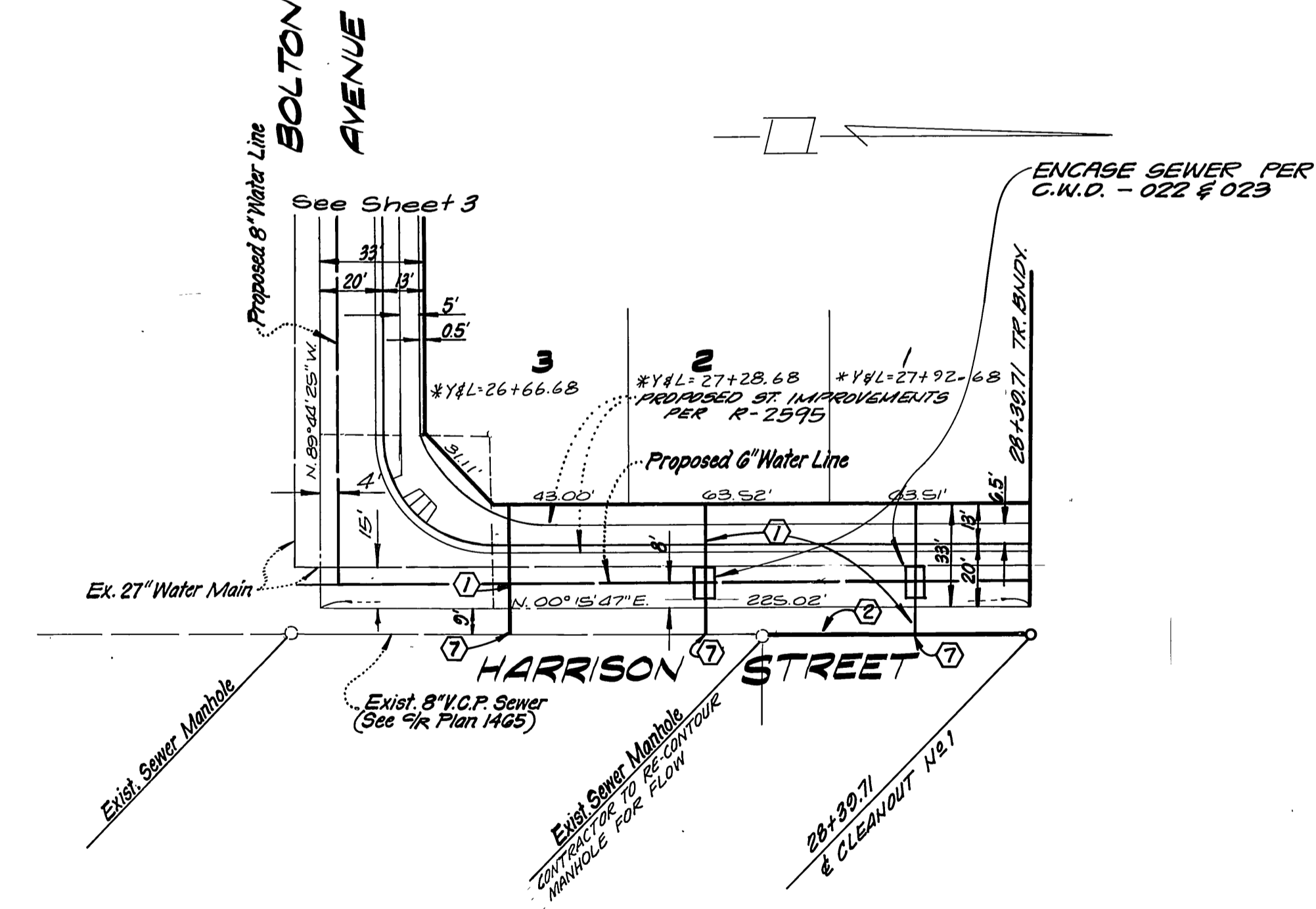
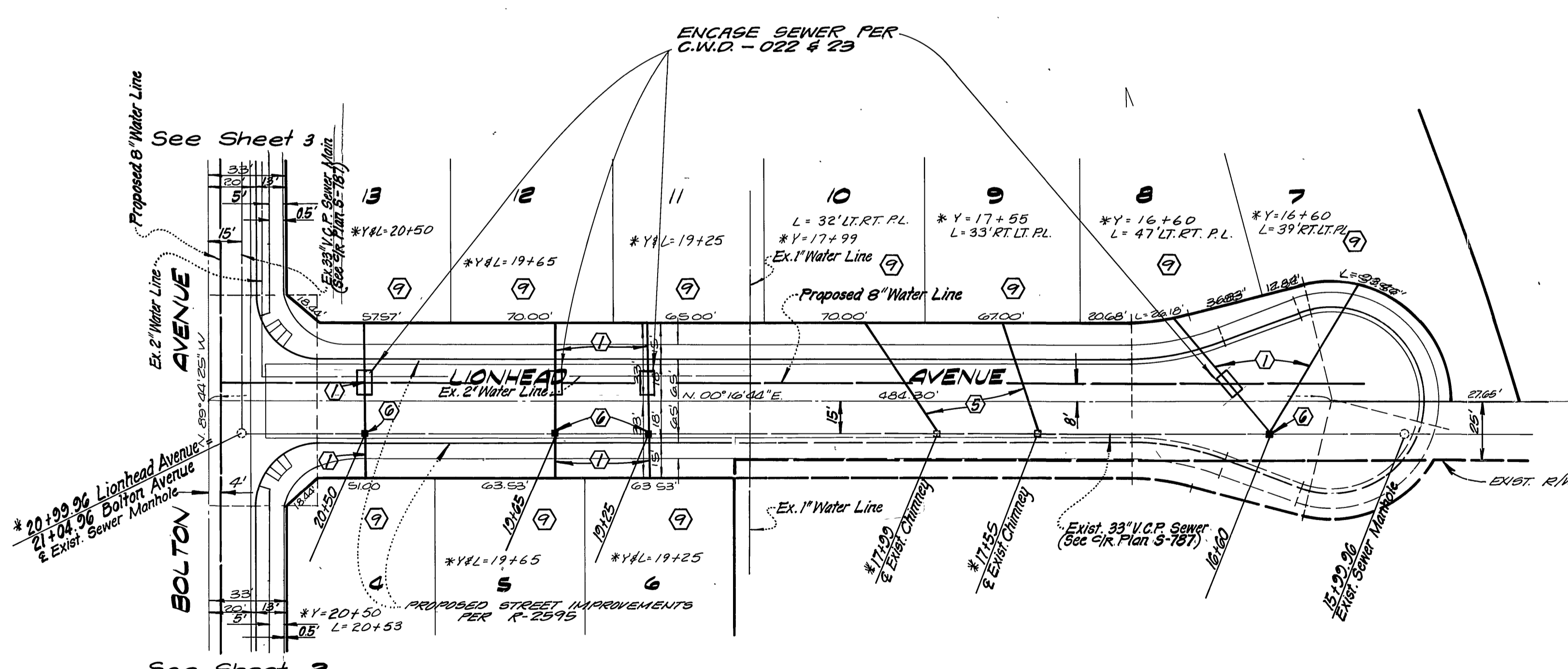
NOTE:
See Sheet 1 For General and Construction Notes



CITY OF RIVERSIDE DOMESTIC SYSTEM Approved by: <i>Don L. Paulk</i> Chief Utilities Engineer - Water	L A WAINSCOTT & ASSOCIATES CIVIL ENGINEERS GRAND TERRACE, CALIFORNIA (714) 824-1775 APPROVED BY <i>L. A. Waincott</i> DATE 11-14-77 R.C.E. 16056	BENCH MARK: F-3-D PK nail in the northerly curb return at Van Buren Boulevard and California Avenue F.B. 03/1/70 Elevation 758.317	CITY OF RIVERSIDE, CALIFORNIA DEPARTMENT OF PUBLIC WORKS		SEWER PLAN AND PROFILE TRACT No. 8583 CIRRUS WAY GILES COURT	S-1357 SHT. 5 OF 6 W.O. 02164-B
			APPROVED BY: <i>Robert J. Waincott</i> CHIEF P.W. ENG. DATE 7/20/84	APPROVED BY: <i>Robert J. Waincott</i> DIRECTOR OF PUBLIC WORKS		



NOTE:
See Sheet 1 For General and Construction Notes



<p>CITY OF RIVERSIDE DOMESTIC SYSTEM</p> <p>Approved by: <i>Don J. Pauls</i> Chief Utilities Engineer - Water</p>	<p>L A WAINSCOTT & ASSOCIATES CIVIL ENGINEERS GRAND TERRACE, CALIFORNIA (714) 824-1775</p> <p>APPROVED BY: <i>L.A. Waincott</i> DATE 11-18-77 R.C.E. 16050</p>	<p>BENCH MARK: F-3-D PK nail in the northerly curb return at Van Buren Boulevard and California Avenue. F.B. 037/70 Elevation 758.317</p>	<p>CITY OF RIVERSIDE, CALIFORNIA DEPARTMENT OF PUBLIC WORKS</p>		<p>SEWER PLAN AND PROFILE TRACT No. 8583 LIONHEAD AVENUE HARRISON STREET</p>		<p>S-1357</p>
			<p>APPROVED BY: <i>W.L. 120</i> W.L. 120/84 DATE 7/20/84</p>	<p>DATE 7/20/84</p>	<p>SCALE: HORIZ. 1"=40' VERT. 1"=4'</p>	<p>SHT. 6 OF 6 W.O. 021-69-B</p>	