

LOCATION MAP

GENERAL NOTES:

1. THE PRIVATE ENGINEER SIGNING THESE PLANS IS RESPONSIBLE FOR THE ACCURACY AND ACCEPTABILITY OF THE WORK HEREON. IN THE EVENT OF DISCREPANCIES ARISING DURING CONSTRUCTION, THE PRIVATE ENGINEER SHALL BE RESPONSIBLE FOR DETERMINING AN ACCEPTABLE SOLUTION, AND REVISING THE PLAN FOR APPROVAL BY THE CITY.
2. CONSTRUCTION SHALL BE IN ACCORDANCE WITH THE STANDARD SPECIFICATIONS FOR PUBLIC WORKS CONSTRUCTION 1985 EDITION AND THE CITY OF RIVERSIDE STANDARD DRAWINGS.
3. IT SHALL BE THE RESPONSIBILITY OF THE CONTRACTOR TO CLEAR THE RIGHT OF WAY IN ACCORDANCE WITH THE PROVISIONS OF THE LAW AS IT AFFECTS EACH UTILITY INCLUDING IRRIGATION LINES AND APPURTENANCES AND AT NO COST TO THE CITY.
4. PIPE SHALL BE BEDDED PER CASE I STANDARD DRAWING NO 452, UNLESS OTHERWISE SPECIFIED ON THE PLANS.
5. LOCATION OF WYES AND LATERALS TO BE DETERMINED IN THE FIELD AT THE DIRECTION OF THE OWNER, AVOID CONFLICT WITH PROPOSED AND/OR EXISTING FACILITIES.
6. ALL STUBS AND LATERALS TO BE CONSTRUCTED IN ACCORDANCE WITH STANDARD DRAWING NO. 562, STUBS SHALL BE PLUGGED AND CAPPED.
7. MANHOLE FRAMES AND COVERS TO BE SET AS NOTED IN PROFILE BY SEWER CONTRACTOR AFTER FINAL PAVING OF STREETS.
8. LATERALS ARE TO BE 4" V.P.R. AND EXTENDED TO PROPERTY LINE.
9. PRIOR TO CONSTRUCTION OF SEWER, CONTRACTOR IS TO EXPOSE EXISTING SEWER AND CONTACT THE ENGINEER FOR VERIFICATION OF EXISTING LOCATION AND ELEVATION.
10. A BLUG SHALL BE INSTALLED AND WILL REMAIN IN PLACE WHERE THE NEW SEWER CONNECTS WITH THE EXISTING SEWER UNTIL SUCH TIME AS THE NEW SEWER IS ACCEPTED BY THE CITY.
11. NO FINISHED FLOOR ELEVATION SHALL BE LESS THAN 4' ABOVE FLOW LINE AT POINT OF CONNECTION WITHOUT HAVING A PROPER BACKWATER VALVE INSTALLED IN THE LATERAL.
12. SEWER/WATER LINE ENCASUREMENT SHALL CONFORM TO CITY WATER DIVISION STD'S CWD-022 AND CWD-023.
13. THE CONTRACTOR SHALL CALL IN A LOCATION REQUEST TO UNDERGROUND SERVICE ALERT (USA), PHONE NO. 1-800-422-4333, TWO WORKING DAYS BEFORE DIGGING. NO CONSTRUCTION PERMIT ISSUED BY THE PUBLIC WORKS DEPARTMENT INVOLVING EXCAVATION FOR UNDERGROUND FACILITIES WILL BE VALID UNLESS THE APPLICANT HAS BEEN PROVIDED AN INQUIRY IDENTIFICATION NUMBER BY U.S.A.

NOTICE TO CONTRACTOR:

THE EXISTENCE AND LOCATION OF UNDERGROUND UTILITY PIPES OR STRUCTURES SHOWN ON THESE PLANS ARE OBTAINED BY A SEARCH OF THE AVAILABLE RECORDS TO THE BEST OF OUR KNOWLEDGE THERE ARE NO EXISTING UTILITIES EXCEPT THOSE SHOWN ON THESE PLANS.

THE CONTRACTOR IS REQUIRED TO TAKE DUE PRECAUTIONARY MEASURES TO PROTECT THE UTILITY LINES SHOWN AND ANY OTHER LINES NOT OF RECORD OR NOT SHOWN ON THESE PLANS.

BENCH MARK

PK NAIL IN EAST CURB OF TYLER ST. ON E. GAYLORD AVE. PRODUCED PER C.I.R. F.B. 206/11 ELEV. 778.21, USED FOR THIS PROJECT. (EQUALS ELEV. 778.09 ON CURRENT CITY DATUM) (REFER TO C.I.R. PLANS R-1938, R-2051 & R-2505)

CITY OF RIVERSIDE
DOMESTIC SYSTEM

[Signature]
CHIEF UTILITIES ENGINEER, WATER

10-15-84
DATE

ALBERT A. WEBB ASSOCIATES
CIVIL ENGINEERS
RIVERSIDE, CALIFORNIA

APPROVED BY *[Signature]* DATE 2/16/84
R.E. No. 11842

W.O. 79-83 FOR ANDREWS DEV. CO. F.B. 1031

MARK	REVISIONS	APPR.	DATE

DESIGNED BY BEL DRAWN BY BEL CHECKED BY BK

CITY OF RIVERSIDE, CALIFORNIA
PUBLIC WORKS DEPARTMENT

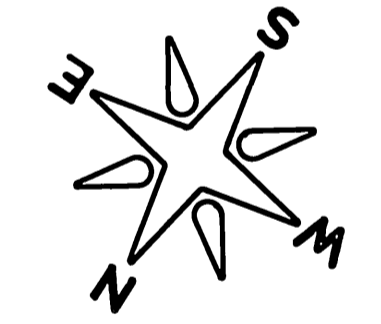
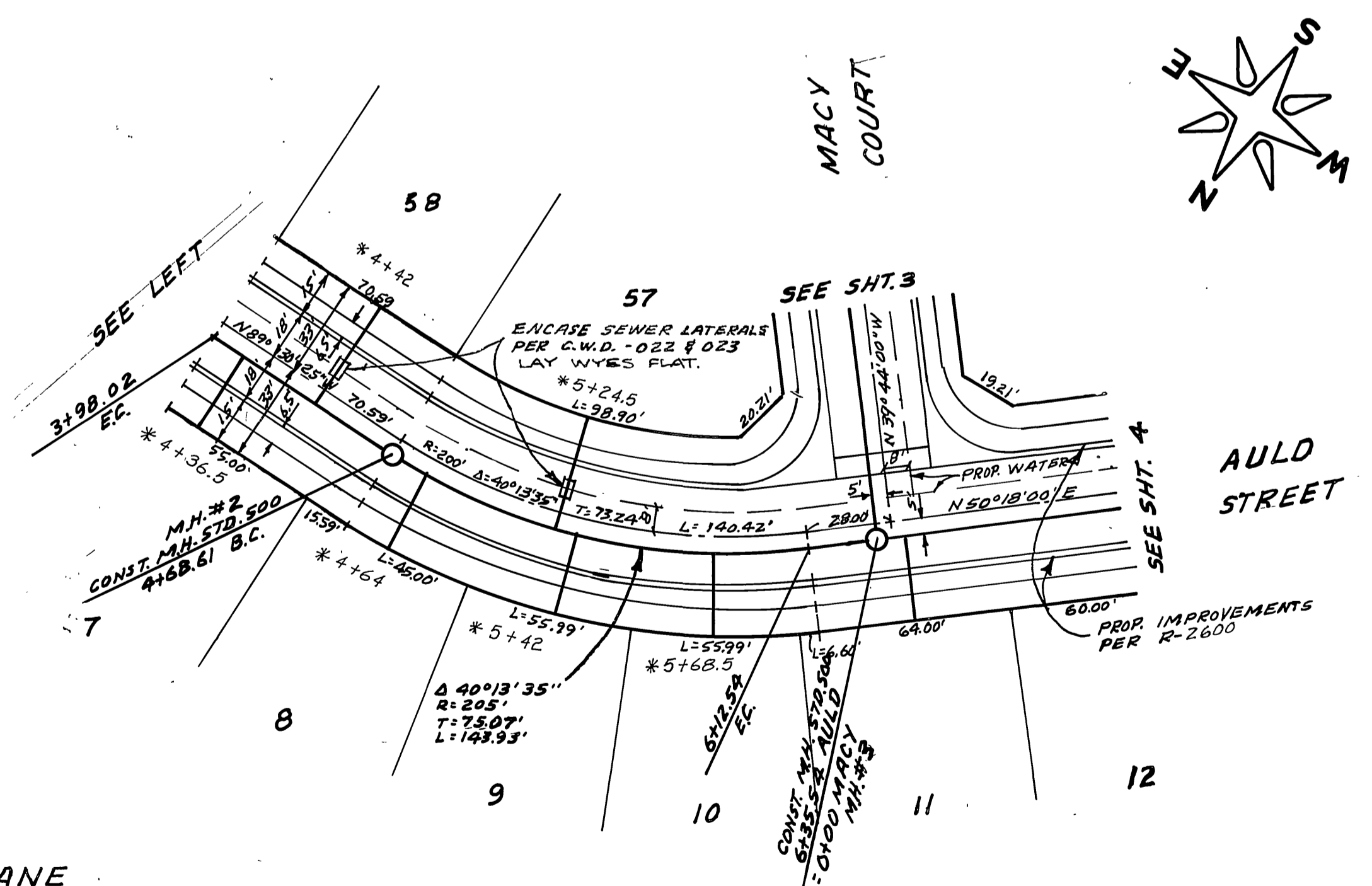
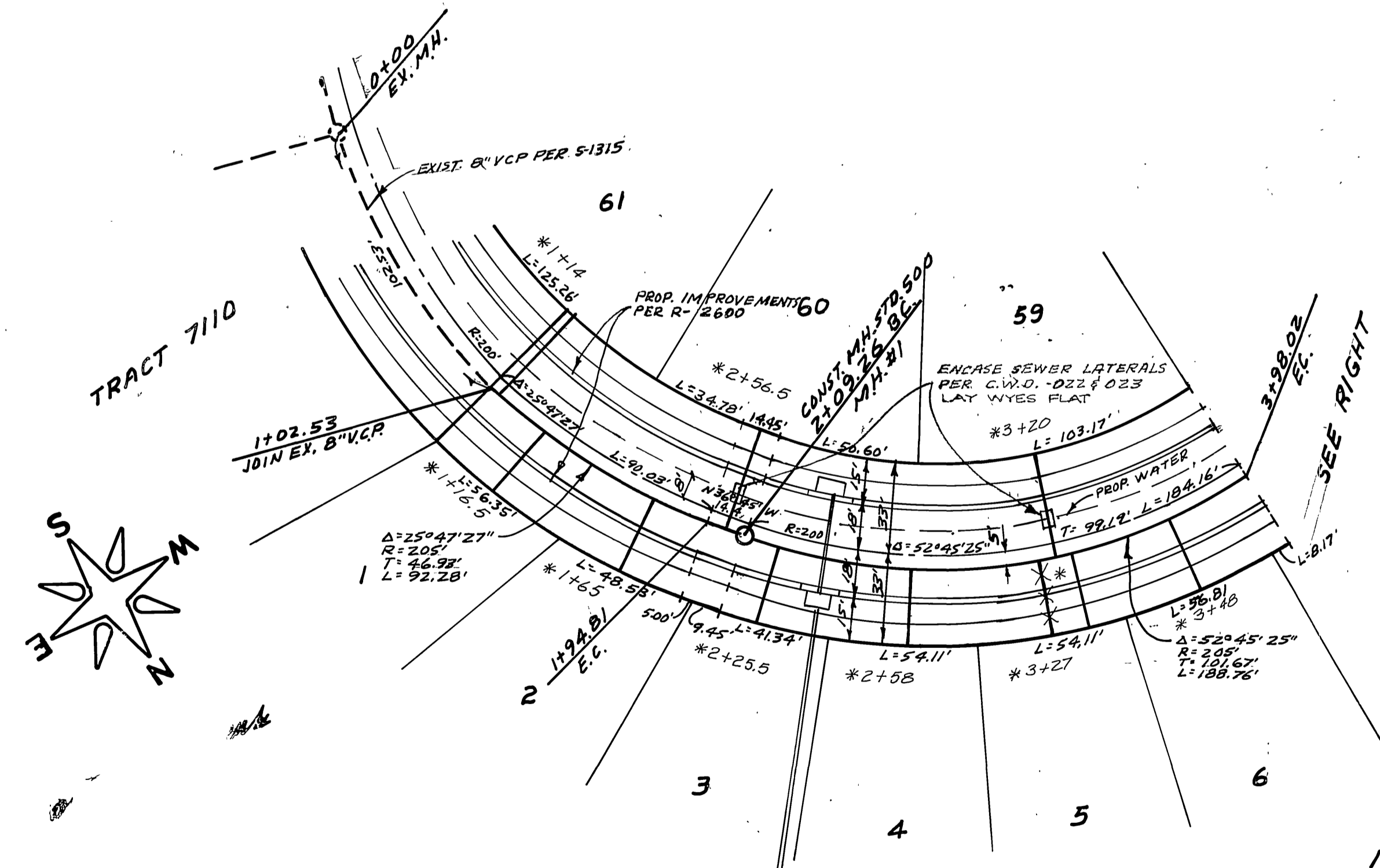
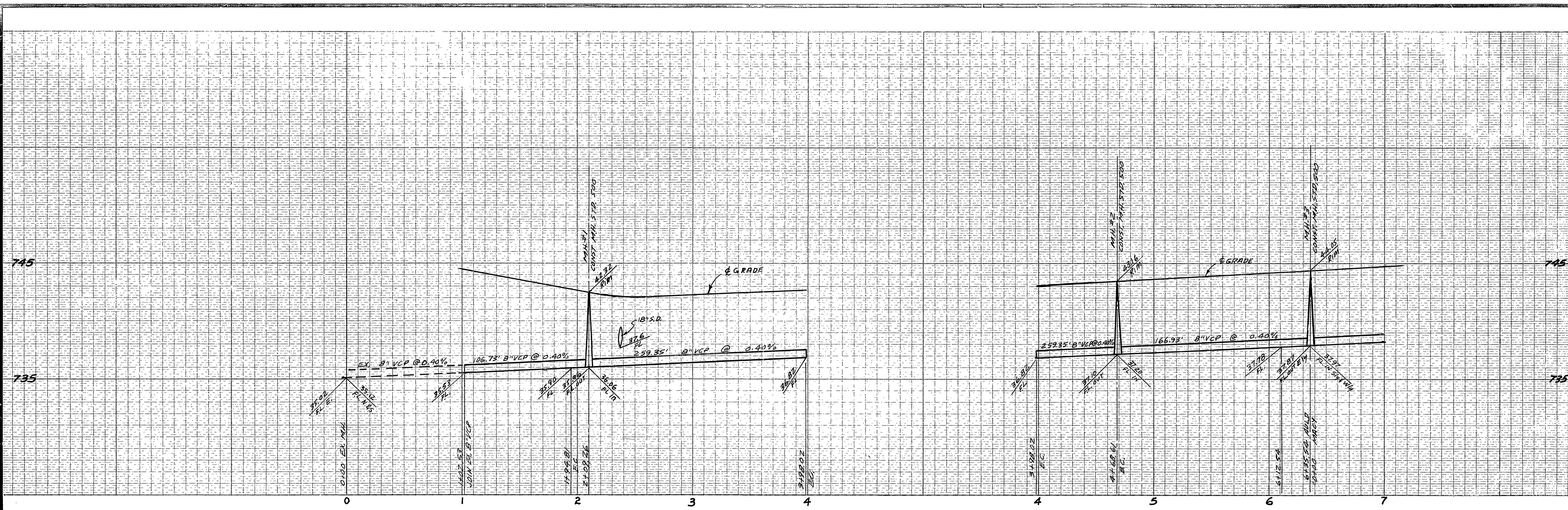
APPROVED BY	BY	DATE
PRINCIPAL ENGINEER	<i>[Signature]</i>	2/25/85
PARK DEPARTMENT		
TRAFFIC DIVISION		
CHIEF PUB. WKS. ENGR.		

* As Built 6-12-87 TE

TRACT NO. 18653
SEWER PLAN AND PROFILE
INDEX SHEET

SCALE: NONE

ACCOUNT No.
DRAWING NUMBER
S-1358
SHEET 1 OF 5
79-83-B



BENCH MARK
 PK NAIL IN EAST CURB OF TYLER ST. ON E
 GAYLORD AVE. PRODUCED PER C/R # 20611
 ELEV. 779.21. USED FOR THIS PROJECT.
 (EQUALS ELEV. 778.09 ON CURRENT CITY QATUM)
 (REFER TO C/R PLANS R-1938, R-2051 & R-2505)

CITY OF RIVERSIDE
 DOMESTIC SYSTEM

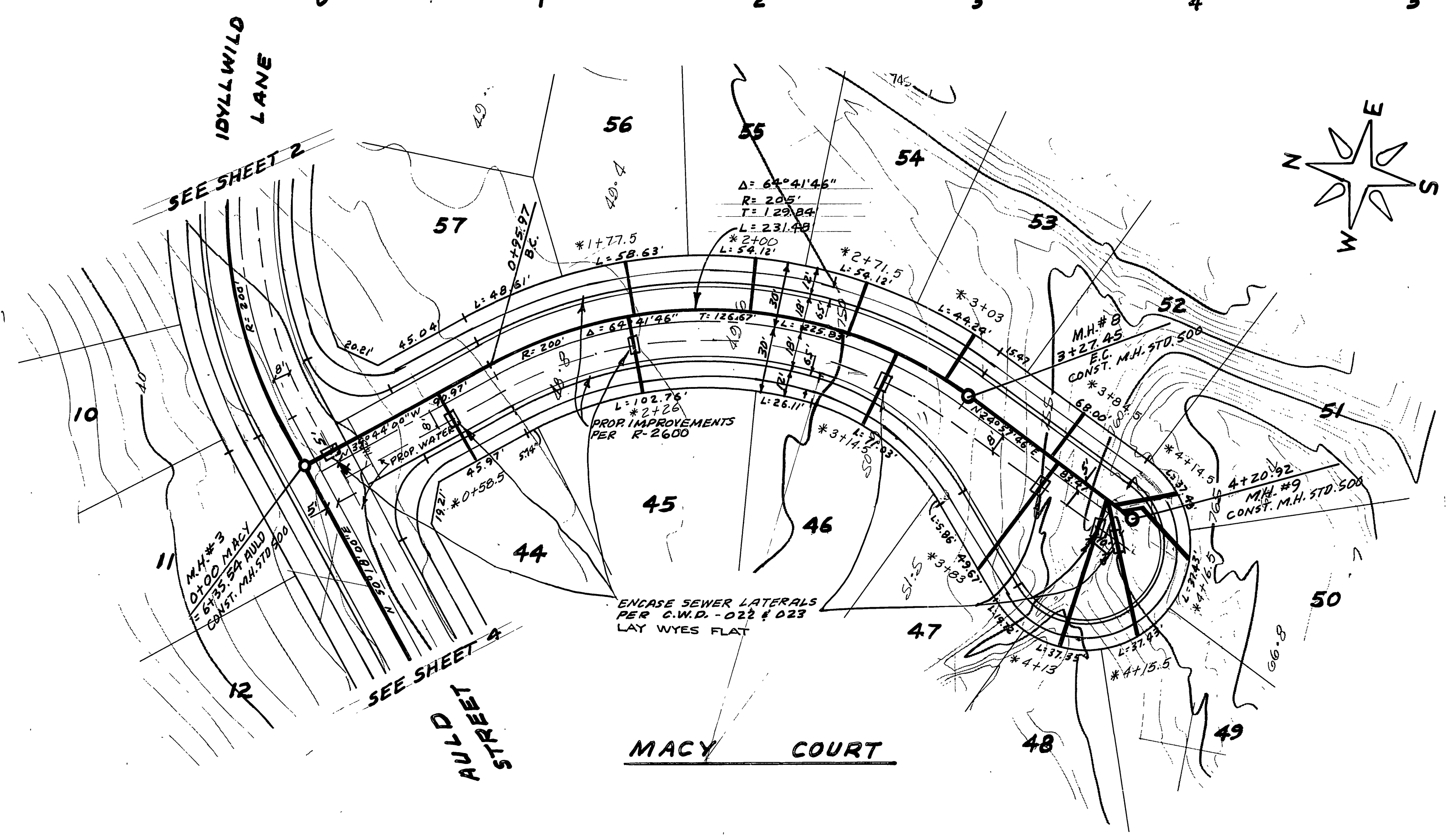
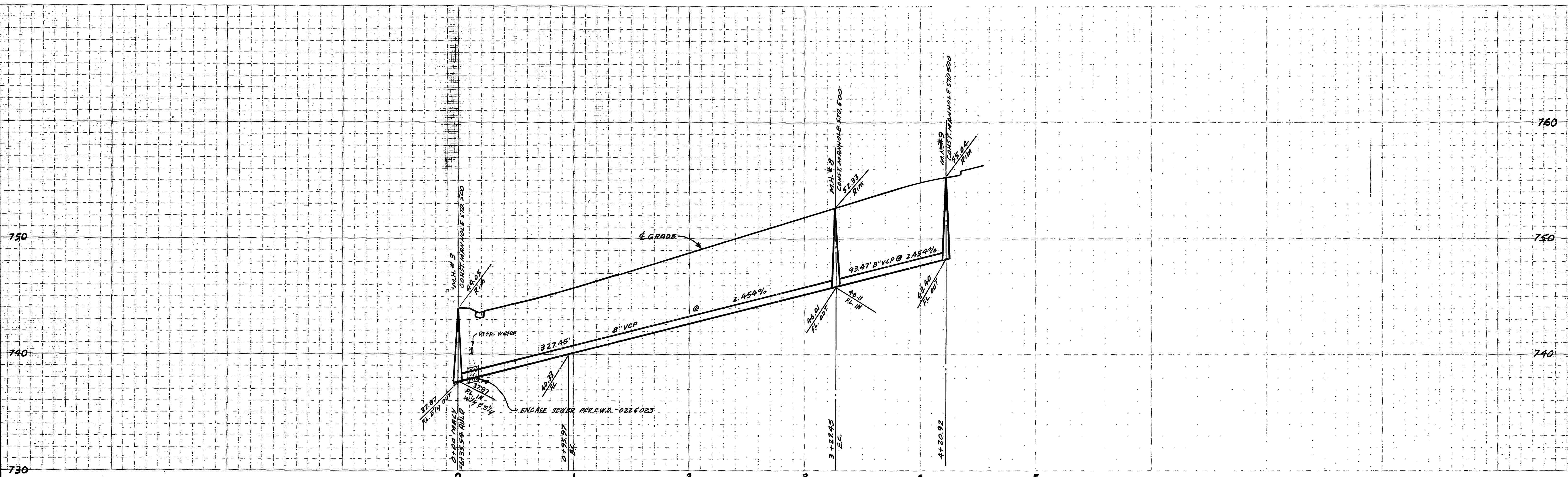
 CHIEF UTILITIES ENGINEER, WATER
 10-15-84
 DATE

ALBERT A. WEBB ASSOCIATES
 CIVIL ENGINEERS
 RIVERSIDE, CALIFORNIA
 APPROVED BY
 DATE 5/14/84
 R.E. No. 11842
 W.O. 79-83 FOR Andrews Dev. F.B. 1031

MARK	REVISIONS	APPR.	DATE

CITY OF RIVERSIDE, CALIFORNIA
 PUBLIC WORKS DEPARTMENT
 APPROVED BY
 DATE 9-25-85
 CHIEF PUB. WKS. ENGR.

INDEX UP
 ACCOUNT NO.
 DRAWING NUMBER
TRACT NO. 18653
SEWER PLAN AND PROFILE
IDYLLWILD LANE
 SHEET 2 OF 5
5-1358
79-83-B
 SCALE: 1" = 40' Horiz. 1" = 4' Vert.



CITY OF RIVERSIDE
DOMESTIC SYSTEM

Don L. Park
CHIEF UTILITIES ENGINEER, WATER

10-15-84
DATE

BENCH MARK

PK NAIL IN EAST CURB OF TYLER ST. ON E. GAYLARD AVE. PRODUCED PER C.D. R. 706/11. ELEV. 778.21, USED FOR THIS PROJECT. (EQUALS ELEV. 778.09 ON CURRENT CITY DATUM) (REFER TO C/W PLANS R-1938, R-2051 & R-2505)

ALBERT A. WEBB ASSOCIATES
CIVIL ENGINEERS
RIVERSIDE, CALIFORNIA

APPROVED BY: *Albert A. Webb* DATE: 2/16/85
R.E. No. 11892

W. 79-83 FOR Andrews Dev. F.B. 1031

MARK	REVISIONS	APPR. DATE

CITY OF RIVERSIDE, CALIFORNIA
PUBLIC WORKS DEPARTMENT

APPROVED BY	BY	DATE	APPROVED BY
PRINCIPAL ENGINEER	<i>BE</i>	9-25-85	<i>William D. Hardman</i>
PARK DEPARTMENT			DIRECTOR OF PUBLIC WORKS
TRAFFIC DIVISION			
CHIEF PUB. WKS. ENGR.			

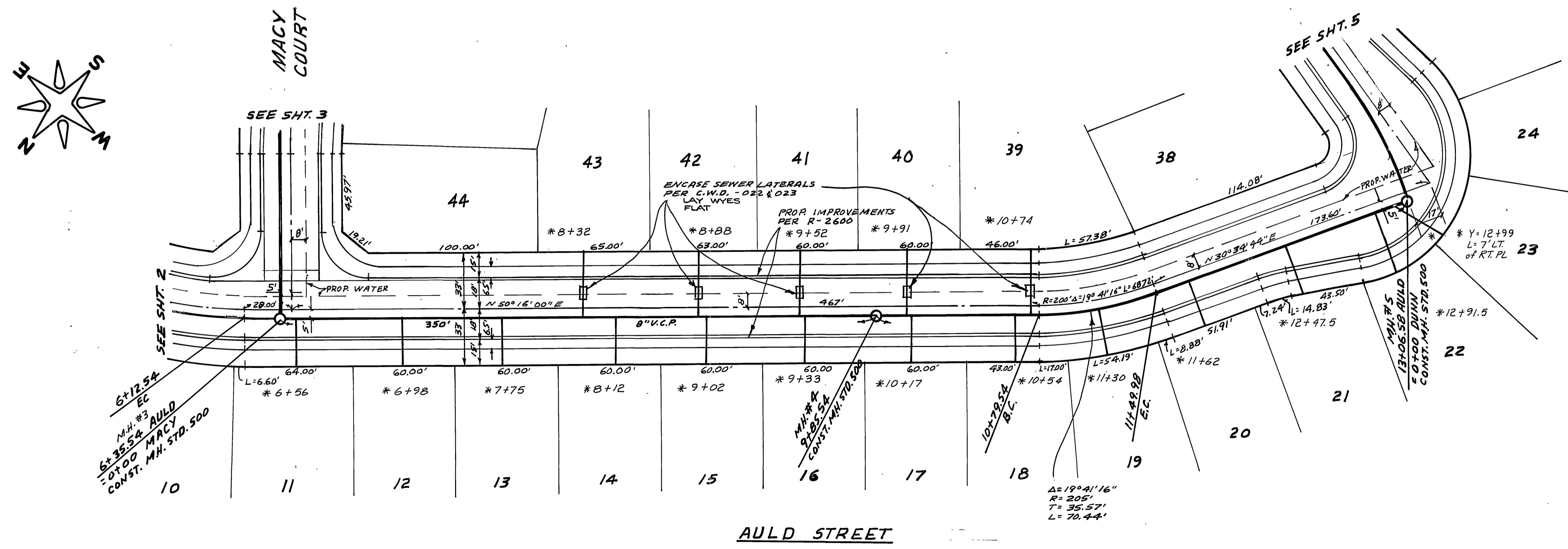
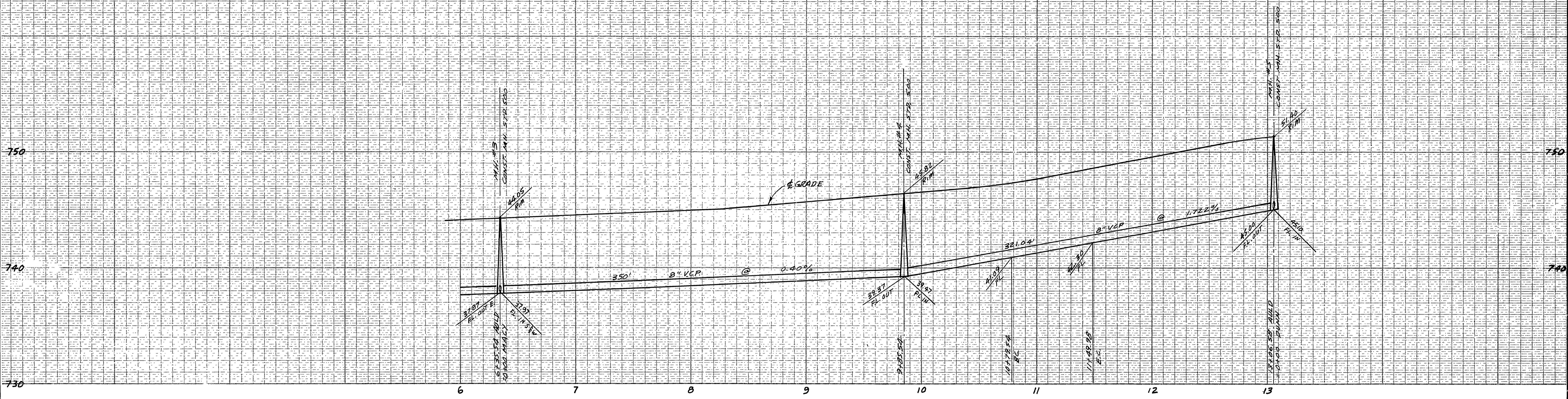
DATE: 9-25-85

*As built 6-12-87

TRACT NO. 18653
SEWER PLAN AND PROFILE
MACY COURT

SCALE: 1" = 40' Horiz. - 1" = 4' Vert.

ACCOUNT No.
DRAWING NUMBER
S-1358
SHEET 3 OF 5
79-83-B



CITY OF RIVERSIDE
DOMESTIC SYSTEM

[Signature]
CHIEF UTILITIES ENGINEER, WATER

10-15-84
DATE

BENCH MARK

PK NAIL IN EAST CURB OF TYLER ST. ON E. GAYLORD AVE. PRODUCED PER C/R F.B. 706/11 ELEV. 778.21, USED FOR THIS PROJECT. (EQUALS ELEV. 778.09 ON CURRENT CITY DATUM) (REFER TO C/R PLANS R-1938, R-2051 & R-2505)

ALBERT A. WEBB ASSOCIATES
CIVIL ENGINEERS
RIVERSIDE, CALIFORNIA

APPROVED BY: *[Signature]* DATE 5/15/84
R.E. No. 11842

W.O. 79-83 FOR: Andrews Dev F.B. 1031

MARK	REVISIONS	APPR.	DATE

DESIGNED BY: BEL DRAWN BY: BEL CHECKED BY: BEL

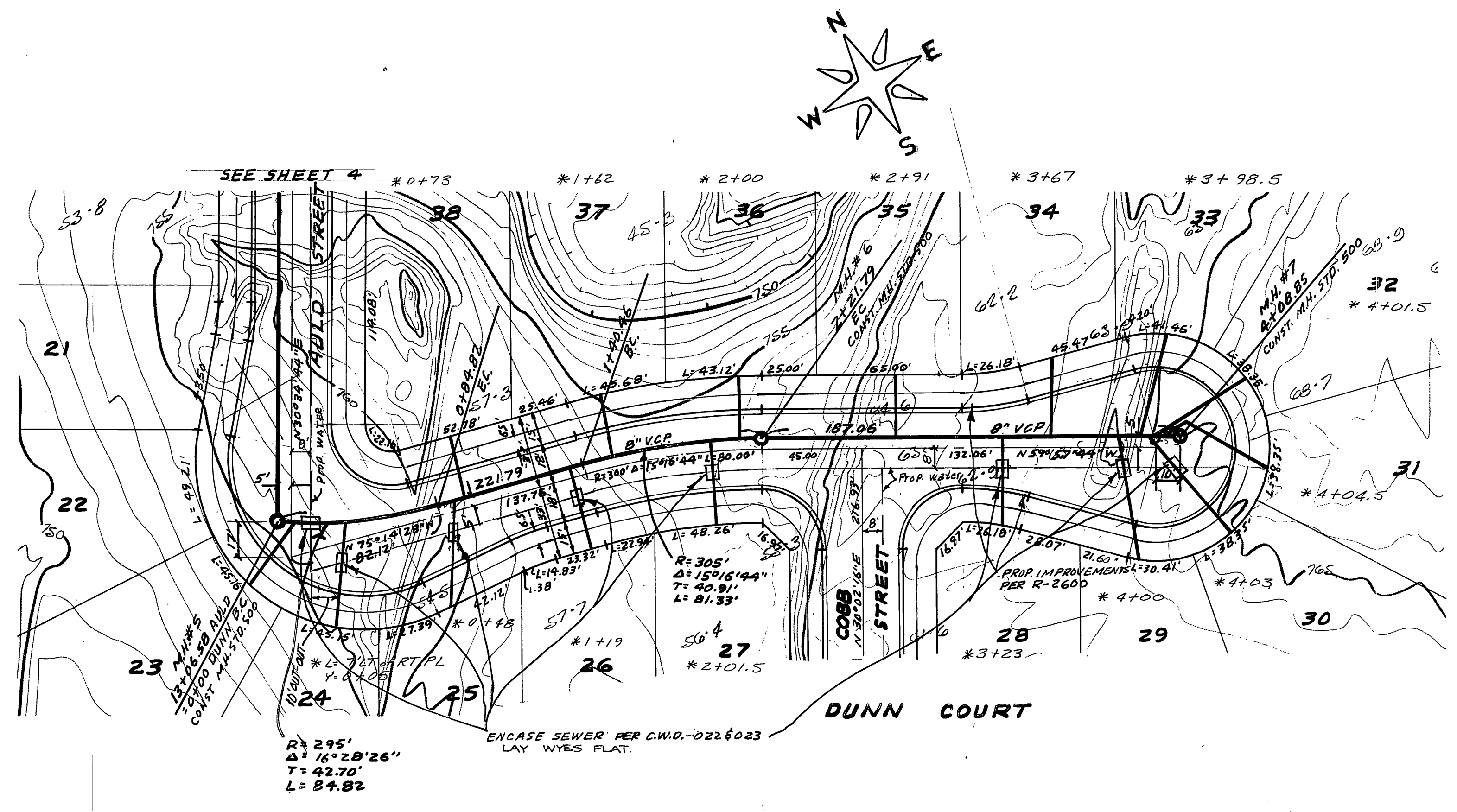
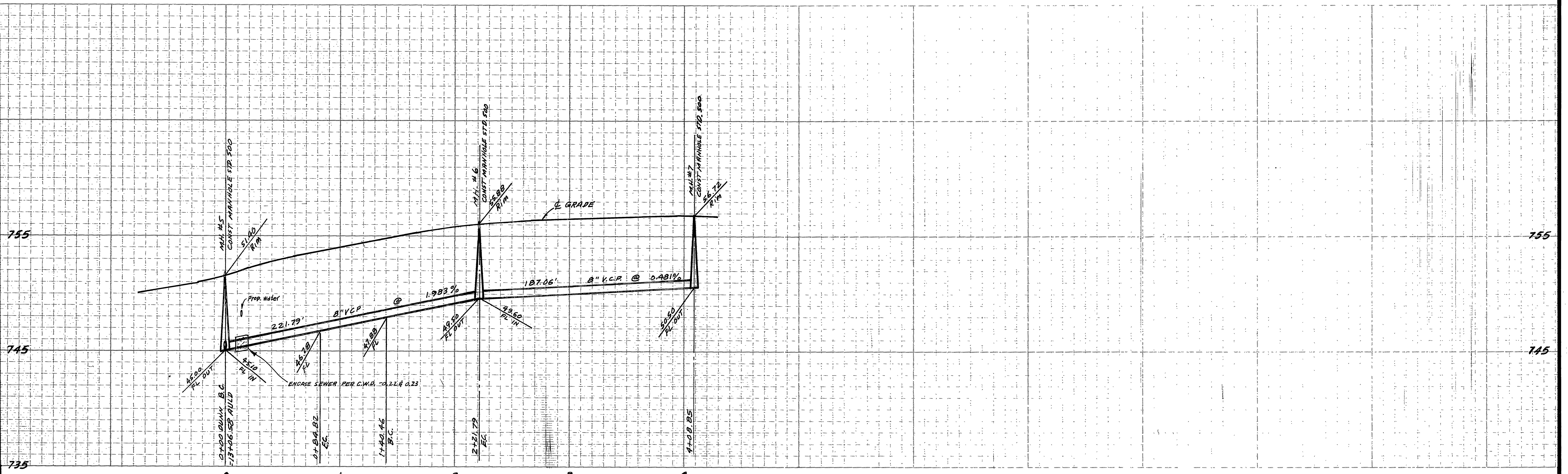
CITY OF RIVERSIDE, CALIFORNIA
PUBLIC WORKS DEPARTMENT

APPROVED BY: *[Signature]* DATE 5-25-85
PRINCIPAL ENGINEER
TRAFFIC DIVISION
CHIEF PUB. WKS. ENGR.

TRACT NO. 18653
SEWER PLAN AND PROFILE
AULD STREET

SCALE: 1" = 40' Horiz. 1" = 4' Vert.

ACCOUNT No.
DRAWING NUMBER
S-1358
SHEET 4 OF 5
79-83-B



CITY OF RIVERSIDE
DOMESTIC SYSTEM

Don L. Paulk
10-15-84
DATE

BENCH MARK
EX. NAIL IN EAST CURB OF TYLER ST. ON E. GAYLORD AVE. PRODUCED PER C.W.D. 10671 ELEV. 728.21 USED FOR THIS PROJECT. (EQUALS ELEV. 728.09 ON CURRENT CITY DATUM) (REFER TO C.W.D. PLANS R-1938, R-2051 & R-2505)

ALBERT A. WEBB ASSOCIATES
CIVIL ENGINEERS
RIVERSIDE, CALIFORNIA

APPROVED BY: *Albert Webb* DATE 2/16/85
R.E. No. 11842

W. 79-83 FOR Andrews Dev. F.B. 1031

MARK	REVISIONS	APPR.	DATE

DESIGNED BY: BEL DRAWN BY: BEL CHECKED BY: BK

CITY OF RIVERSIDE, CALIFORNIA
PUBLIC WORKS DEPARTMENT

APPROVED BY: *William D. Henderson* DATE 2-25-85
DIRECTOR OF PUBLIC WORKS

TRACT NO. 18653
SEWER PLAN AND PROFILE
DUNN COURT
COBBS STREET

SCALE: 1"=40' Horiz. - 1"=4' Vert.

INDEX W/F

ACCOUNT No. DRAWING NUMBER
S-1358

SHEET 5 OF 5
79-83-B