

**CONSTRUCTION LEGEND**

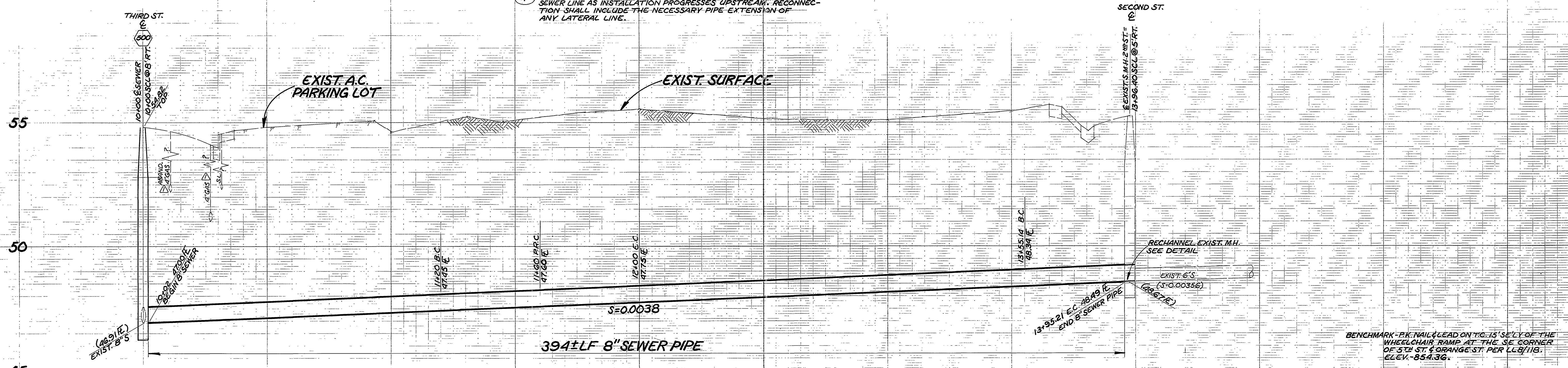
CENTER LINE  $\overline{CL}$   
 RIGHT OF WAY  $\overline{RW}$   
 LOT LINE  $\overline{L}$

**SPECIFIC CONSTRUCTION NOTES**

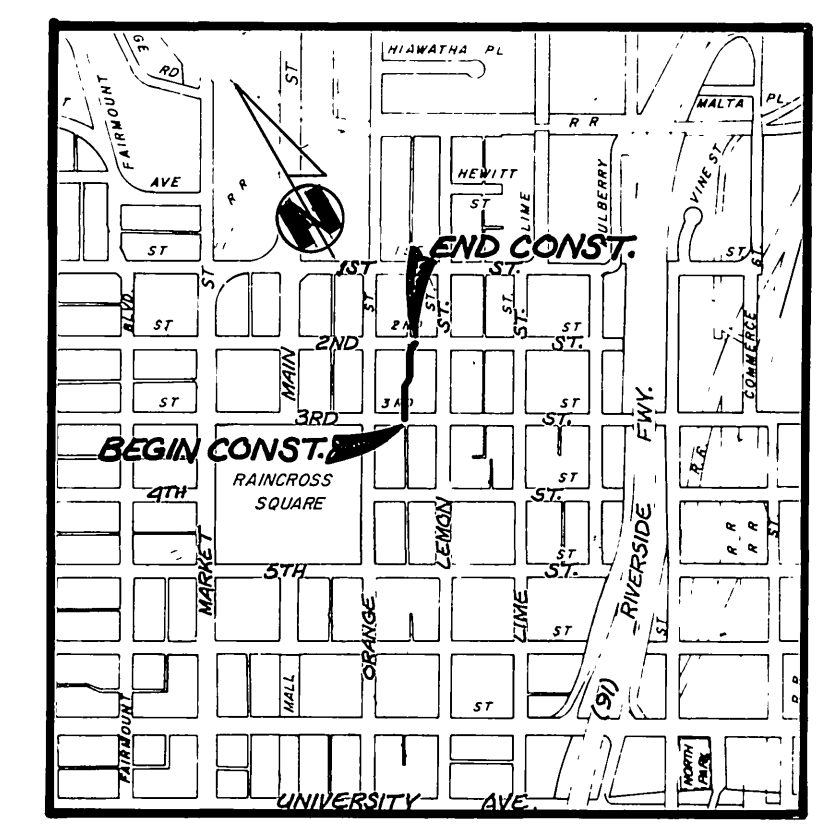
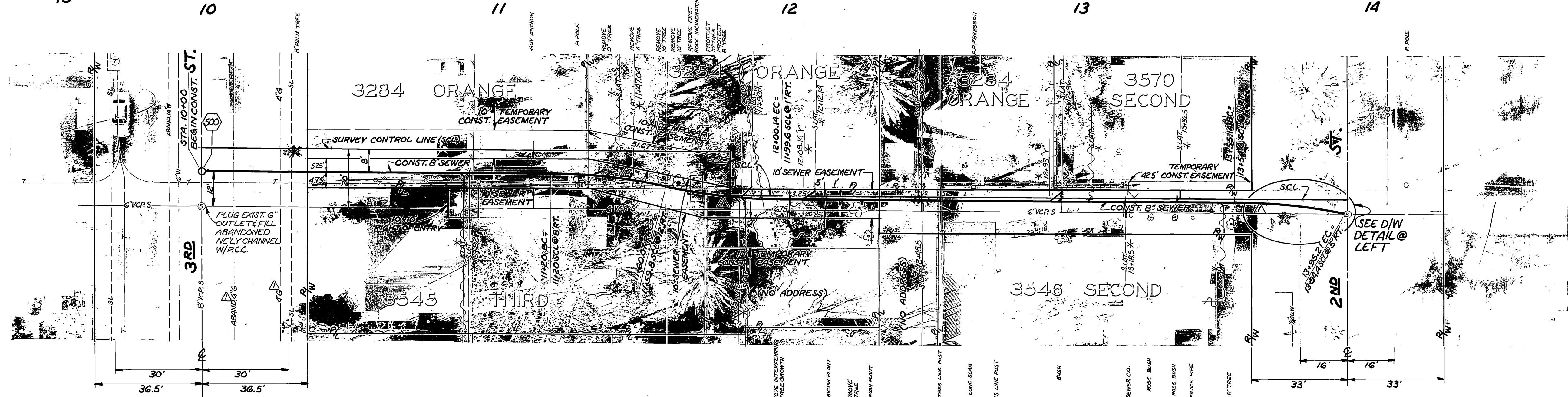
NUMBERS ABOVE 100 IN A HEXAGON ON THE PLAN REFER TO THE RESPECTIVE STANDARD DRAWING AND SHALL BE CONSTRUCTED ACCORDINGLY UNLESS MODIFICATIONS ARE NOTED ON THE PLAN OR COVER SHEET BELOW. ANY NUMBER SHOWN BELOW THE STANDARD DRAWING NUMBER INDICATES THE SPECIFIC ALTERNATE TO BE CONSTRUCTED.

**GENERAL CONSTRUCTION NOTES**

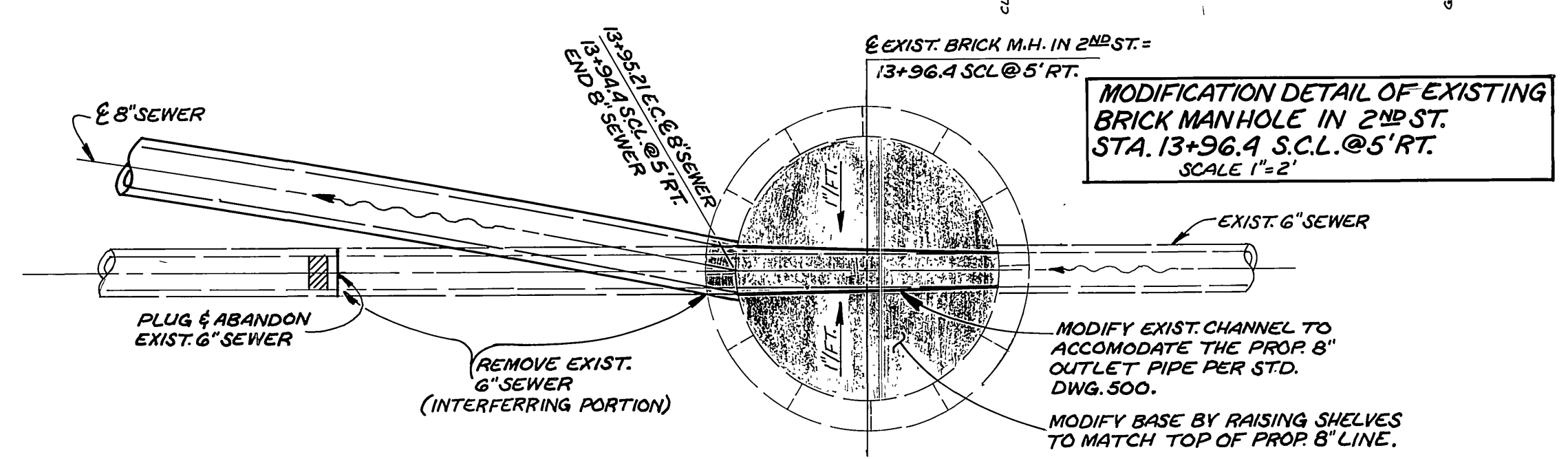
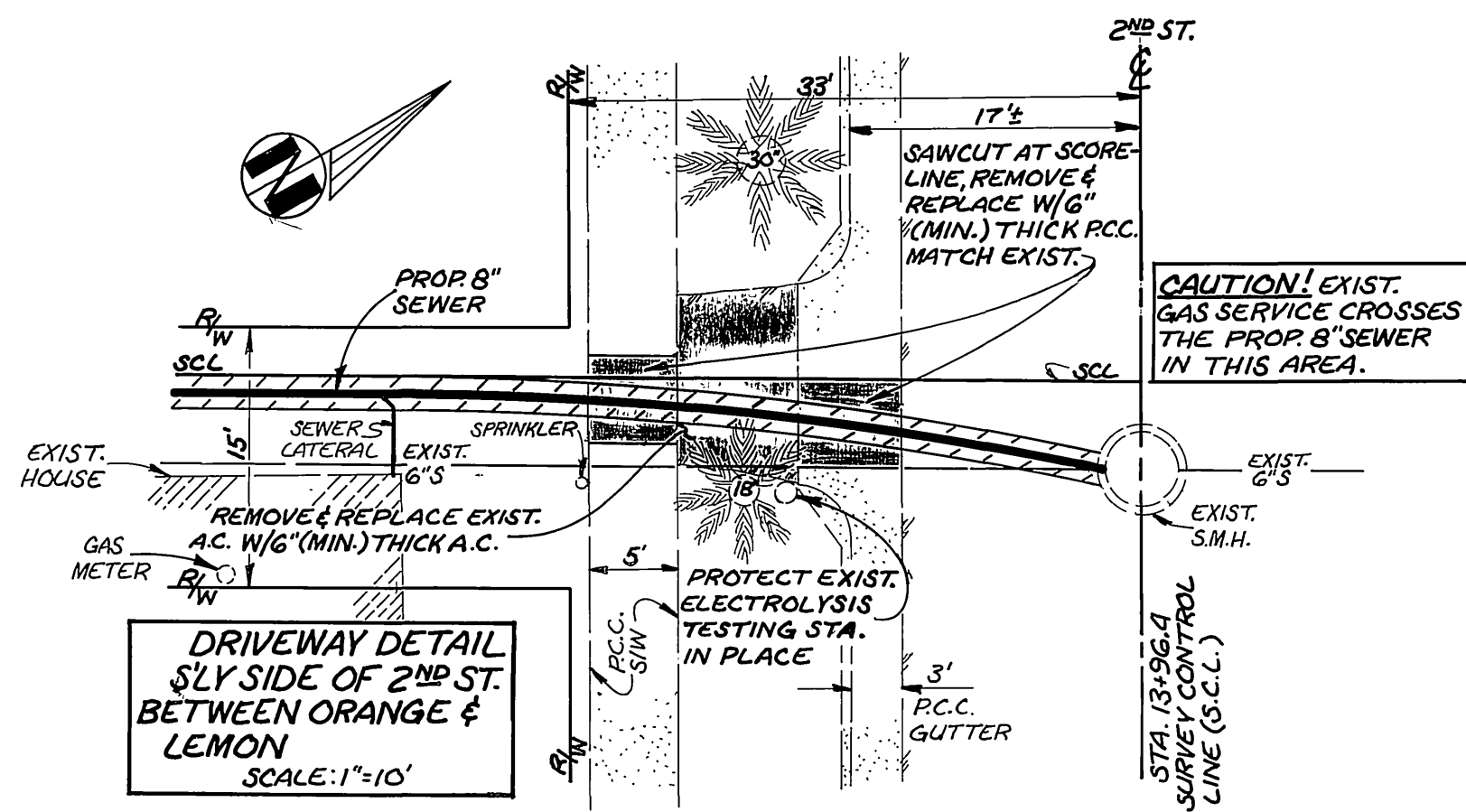
- EXISTING UTILITIES SHOWN ON THIS PLAN ARE PLOTTED FROM UTILITY RECORDS. THE CONTRACTOR IS REQUIRED TO TAKE DUE PRECAUTIONARY MEASURES TO LOCATE & PROTECT ALL UTILITIES WHETHER OR NOT SHOWN ON THIS PLAN. IF THE COVER OF A UTILITY IS KNOWN IT IS SHOWN IN THE PROFILE. UTILITIES SHOWN IN THE PROFILE AS  $\overline{---}$  INDICATES THAT THE COVER IS UNKNOWN BUT THE UTILITY IS NOT EXPECTED TO CONFLICT WITH THE PROPOSED IMPROVEMENTS.
- ALL ELEVATIONS SHOWN ON THE PLAN SHALL BE STAKED IN THE FIELD.
- LOCATIONS OF SEWER LATERALS SHOWN ON THE PLAN ARE APPROXIMATE. SEWER LATERALS SHALL BE LOCATED IN THE FIELD BY THE CONTRACTOR AT THE TIME OF CONSTRUCTION.
- ALL SEWER LATERALS SHALL BE RECONNECTED TO THE PROPOSED SEWER LINE AS INSTALLATION PROGRESSES UPSTREAM. RECONNECTION SHALL INCLUDE THE NECESSARY PIPE EXTENSION OF ANY LATERAL LINE.
- REMOVE & REPLACE, IN KIND, EXISTING FENCES AS NECESSARY FOR SEWER CONSTRUCTION. BUT IN NO CASE SHALL EXISTING IMPROVEMENTS BE REMOVED BEYOND THE LIMITS OF THE TEMPORARY CONSTRUCTION EASEMENT.
- PROTECT EXISTING POWER POLES IN PLACE. 48 HRS. PRIOR TO EXCAVATING CONTACT THE CITY OF RIVERSIDE PUBLIC UTILITIES DEPT. ELECTRIC OVERHEAD DIVISION AT (714) 787-7426.
- THE CONTRACTOR MAY USE VITRIFIED CLAY PIPE (VCP) OR ANY PLASTIC PIPE SPECIFIED IN THE STANDARD SPECIFICATIONS FOR PUBLIC WORKS CONSTRUCTION FOR SEWER LINE CONSTRUCTION.
- PAVEMENT REPLACEMENT SECTION SHALL BE:  
 10" FULL DEPTH A.C. ON THIRD ST.  
 6" FULL DEPTH A.C. ON SECOND ST.  
 4" FULL DEPTH A.C. ON PARKING LOT @ 3284 ORANGE ST.
- ALL PAVEMENT STRIPING AND MARKINGS SHALL BE REPLACED WHEREVER SEWER CONSTRUCTION WORK CAUSES OBLITERATION.



BENCHMARK - PK. NAIL & LEAD ON T.C. IS 15' SE'LY OF THE WHEELCHAIR RAMP AT THE SE CORNER OF 5TH ST & ORANGE ST. PER L&B/118. ELEV. 854.36.



PROJECT LOCATION MAP  
 SCALE: 1"=100'



**CURVE DATA**

INDEX	R	Δ	T	L
1	200'	11°28'42"	20.10	40.07'

ADDED NEW 4" GAS LINE @ S'LY OF NLY RW & SHOWED EXIST. 4" GAS @ NLY OF EAS. ABAND. 12/1/76

**CITY OF RIVERSIDE**  
 PUBLIC WORKS DEPARTMENT

APPROVED BY: *[Signature]*  
 PRINCIPAL ENGINEER  
 PARK DEPARTMENT

APPROVED BY: *[Signature]*  
 WILLIAM D. HARDNER  
 PUBLIC WORKS DIRECTOR

DATE: OCTOBER 10, 1985

**ALLEY SEWER REPLACEMENT**  
 2ND ST. TO 3RD ST. BETWEEN ORANGE & LEMON

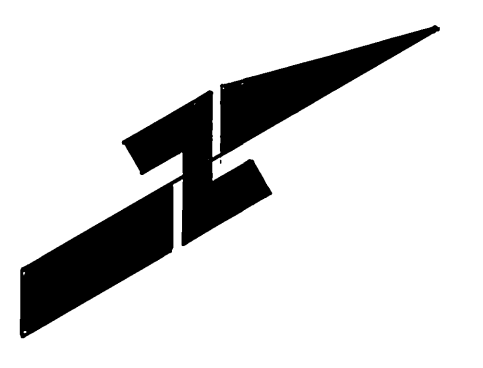
HORIZ. SCALE: 1"=20'  
 VERT. SCALE: 1"=2'

ACCOUNT NO. 32-577-566  
**S-1363**  
 SHEET 1 OF 1  
 FILE NO.

**Underground Service Alert**

Call: TOLL FREE  
**1-800-422-4133**

TWO WORKING DAYS BEFORE YOU DIG



\* AS BUILT - RVZ 1-16-86

INDEX WF