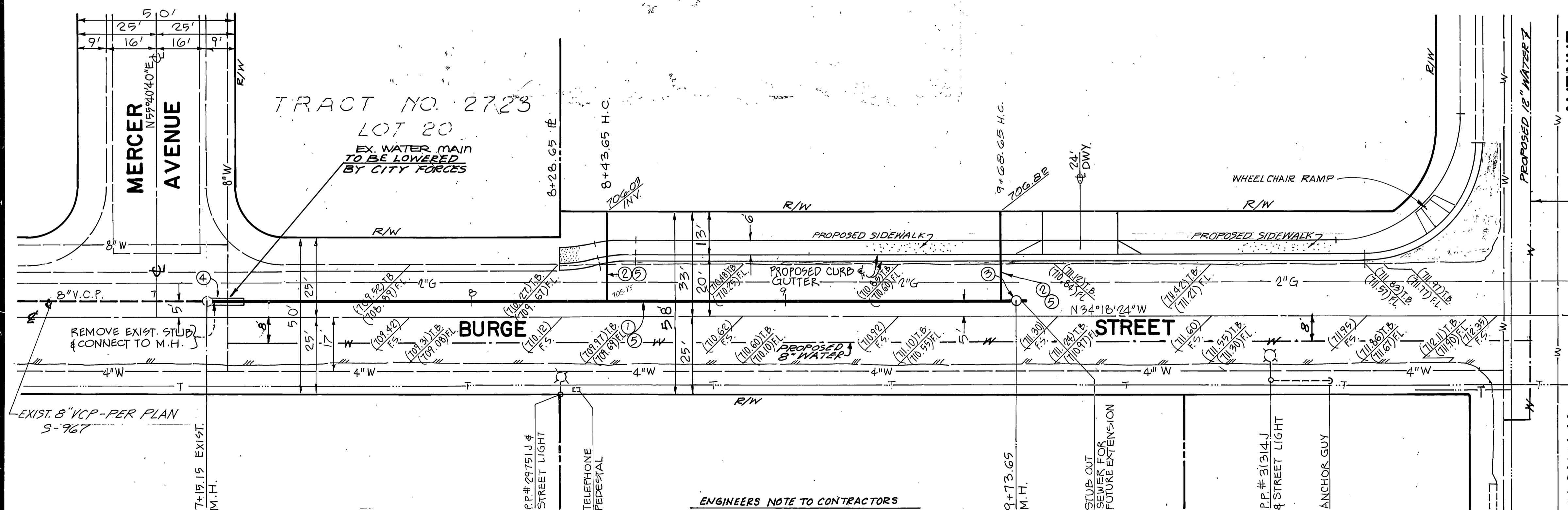


GENERAL NOTES:

- IT SHALL BE THE RESPONSIBILITY OF THE CONTRACTOR TO CLEAR THE RIGHT OF WAY IN ACCORDANCE WITH THE PROVISIONS OF LAW AS IT AFFECTS EACH UTILITY INCLUDING IRRIGATION LINES AND APPURTENANCES AND AT NO COST TO THE CITY.
- CONSTRUCTION SHALL BE IN ACCORDANCE WITH THE CITY OF RIVERSIDE DEPARTMENT OF PUBLIC WORKS, STANDARD DRAWINGS AND THE STANDARD SPECIFICATIONS FOR PUBLIC WORKS, CONSTRUCTION, 1982 EDITION.
- LOCATION OF LATERALS TO BE DETERMINED IN THE FIELD AT THE DIRECTION OF THE OWNER. AVOID CONFLICT WITH PROPOSED AND/OR EXISTING FACILITIES.
- CONTRACTOR IS TO VERIFY EXISTING SEWER ELEVATION PRIOR TO CONSTRUCTION.
- NO FINISHED FLOOR ELEVATION SHALL BE LESS THAN 4' ABOVE THE SEWER FLOW LINE AT POINT OF CONNECTION WITHOUT HAVING A PROPER BACKWATER VALVE INSTALLED IN THE LATERAL.
- QUANTITIES SHOWN ARE FOR INFORMATION ONLY AND THE CITY OF RIVERSIDE IS NOT RESPONSIBLE FOR THEIR ACCURACY.
- THE SEWER CONTRACTOR SHALL ADJUST MANHOLES TO FINAL GRADE AFTER PAVING IS COMPLETED.
- A PLUG SHALL BE INSTALLED AND WILL REMAIN IN PLACE WHERE THE NEW SEWER CONNECTS WITH THE EXISTING SEWER UNTIL THE NEW SEWER IS ACCEPTED BY THE CITY.
- THE PRIVATE ENGINEER SIGNING THESE PLANS IS RESPONSIBLE FOR ASSURING THE ACCURACY AND ACCEPTABILITY OF THE WORK HEREON. IN THE EVENT OF DISCREPANCIES ARISING DURING CONSTRUCTION, THE PRIVATE ENGINEER SHALL BE RESPONSIBLE FOR DETERMINING AN ACCEPTABLE SOLUTION AND REVISING THE PLANS FOR APPROVAL BY THE CITY.
- THE CONTRACTOR SHALL CALL IN A LOCATION REQUEST TO UNDERGROUND SERVICE ALERT (USA) PHONE NO. 1-800-422-4133, TWO WORKING DAYS BEFORE DIGGING. NO CONSTRUCTION PERMIT WILL BE ISSUED BY THE PUBLIC WORKS DEPARTMENT INVOLVING EXCAVATION FOR THE UNDERGROUND FACILITIES UNLESS THE APPLICANT HAS BEEN PROVIDED AN INQUIRY IDENTIFICATION NUMBER BY U.S.A.
- THE PRIVATE ENGINEER PREPARING THESE PLANS SHALL BE RESPONSIBLE FOR PRESERVING OR RE-ESTABLISHING AND REFERENCING SURVEY MONUMENTS DESTROYED, DISTURBED OR BURIED AS A RESULT OF CONSTRUCTION SHOWN HEREON.
- DEVELOPER TO GIVE CITY WATER DIVISION FIVE (5) WORKING DAYS WRITTEN NOTICE PRIOR TO START OF CONSTRUCTION AND TO ALLOW CITY TEN (10) WORKING DAYS FOR COMPLETION OF WORK (787-7611)

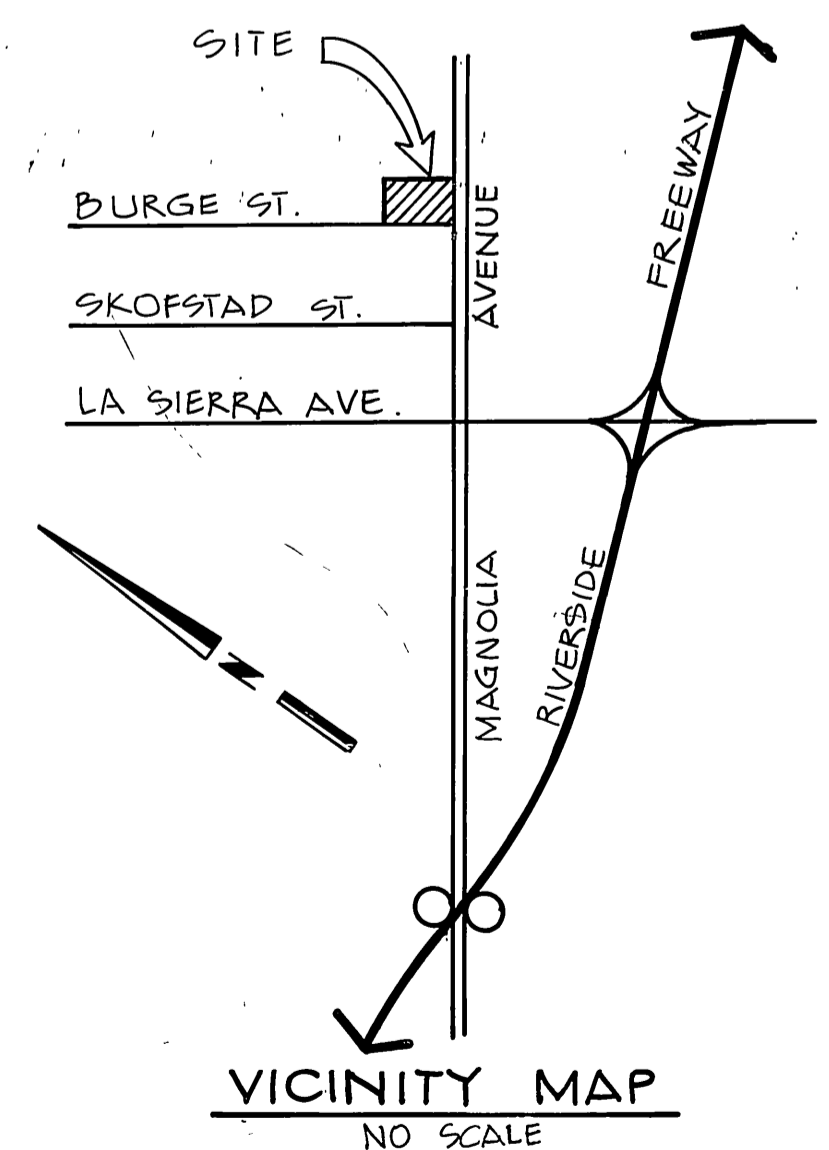


CONSTRUCTION NOTES & QUANTITIES

① CONST. 8" V.C.P. SEWER MAIN	295	L.F.
② CONST. 4" V.C.P. SEWER LATERALS PER STD. 562	58	L.F.
③ CONST. SEWER MANHOLE PER CITY OF RIV. STD. DWG. NO. 500	1	EA.
④ CONST. SEWER PIPE ENCASEMENT PER CITY OF RIV. STD. DWG. NO. 504	10	L.F.
⑤ CONST. RESURFACING PER CITY REQUIREMENTS PER STD. 493	650	S.F.

ENGINEERS NOTE TO CONTRACTORS
 ALL UTILITIES SHOWN HEREON ARE FROM A SEARCH OF AVAILABLE RECORDS. THE CONTRACTOR SHALL TAKE DUE PRECAUTIONARY MEASURES TO LOCATE AND PROTECT UTILITY LINES SHOWN HEREON OR THOSE NOT OF RECORD.

SEE STREET IMPROVEMENT PLANS SHEET 3, R-2628 FOR BURGE & SHEET 2 FOR MAGNOLIA



SCALE: 1"=20'
 Construction contractor agrees that in accordance with generally accepted construction practices, construction contractor will be required to assume sole and complete responsibility for job site conditions during the course of construction of the project, including safety of all persons and property; that this requirement shall be made to apply continuously and not be limited to normal working hours, and construction contractor further agrees to defend, indemnify and hold design professional harmless from any and all liability, real or alleged, in connection with the performance of work on this project, excepting liability arising from the sole negligence of design professional.
 California Council of Civil Engineers & Land Surveyors

BENCH MARK
 RIVERSIDE CITY BENCH MARK
 P.K. & TAG IN NORTHWESTERLY CURB RETURN MAGNOLIA AVE. AND LA SIERRA AVE.
 ELEVATION = 711.20

PLANS PREPARED BY:
WALDEN & ASSOCIATES, INC.
 400 WEST GARRY AVENUE, SUITE D
 SANTA ANA, CALIFORNIA 92704
 (714) 549-0049
 CIVIL ENGINEERS - LAND SURVEYORS
 David L. Walden, R.C.E. 194-02 DATE 4-18-84

APPROVED BY: <i>John Johnson</i> CHIEF UTILITY ENGINEER, ELECTRICAL DATE 10-10-84	APPROVED BY: <i>Paul Park</i> CHIEF WATER UTILITY ENGINEER DATE 10-11-84
CITY OF RIVERSIDE, CALIFORNIA PUBLIC WORKS DEPARTMENT	
APPROVED BY: PRINCIPAL ENGINEER TRAFFIC DIVISION CHIEF PUB. WKS. ENGR. DATE 10/19/84	BY: DATE DATE DATE
DESIGNED BY JLT DRAWN BY CEM CHECKED BY RB	

SEWER PLAN AND PROFILE	
BURGE STREET	
MERCER AVENUE TO 298.5 SOUTHERLY FOR	
CPC C-10-834	
ACCOUNT NO.	DRAWING NUMBER
	S-1364
SHEET	OF
	1 OF 1
SCALE: HORIZ.: 1"=20' VERT.: 1"=2'	