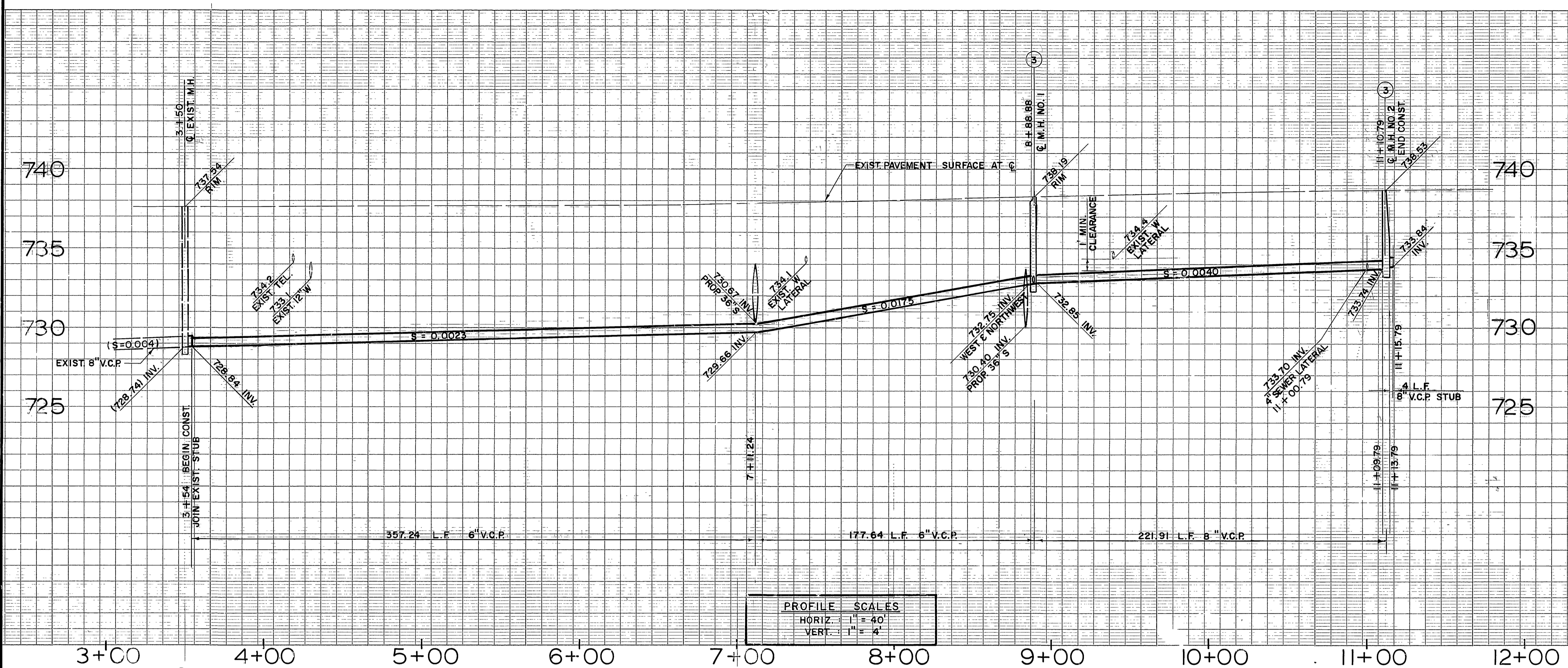
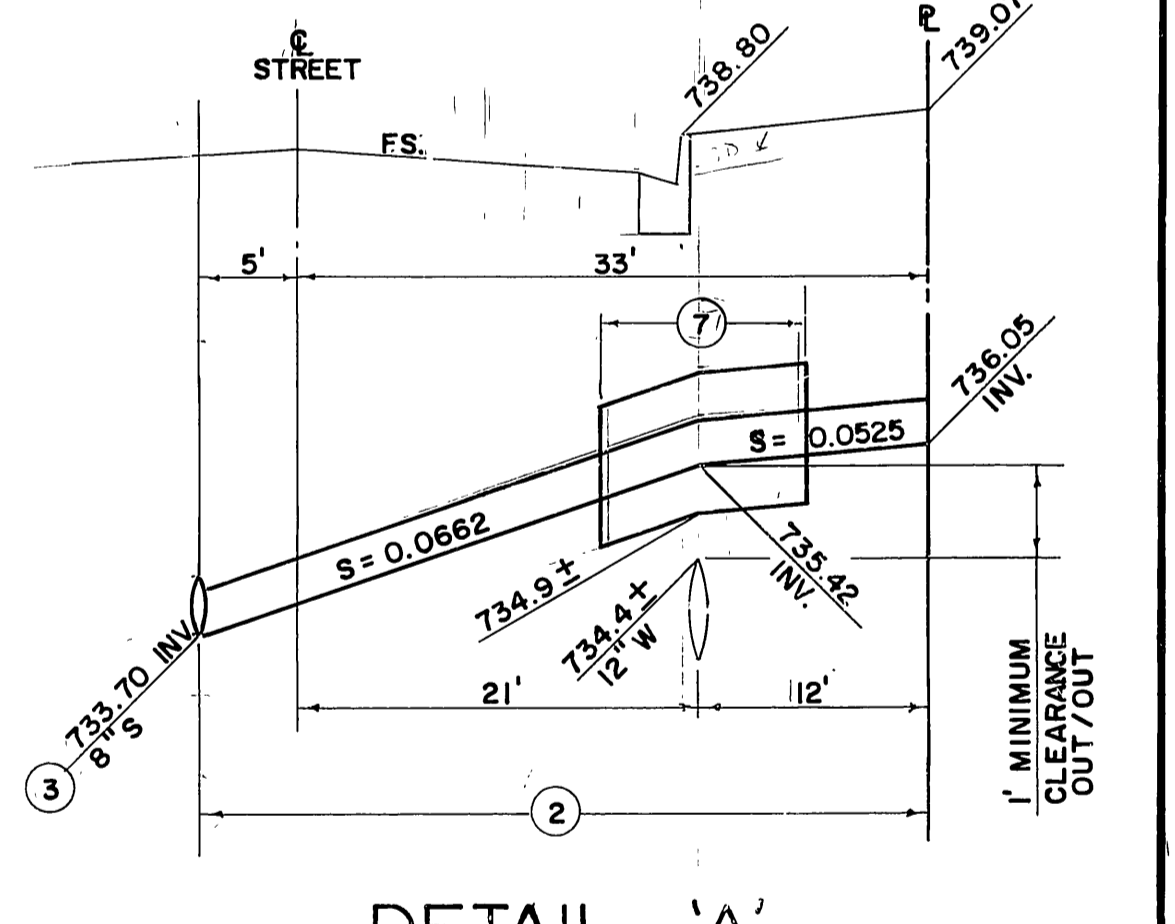
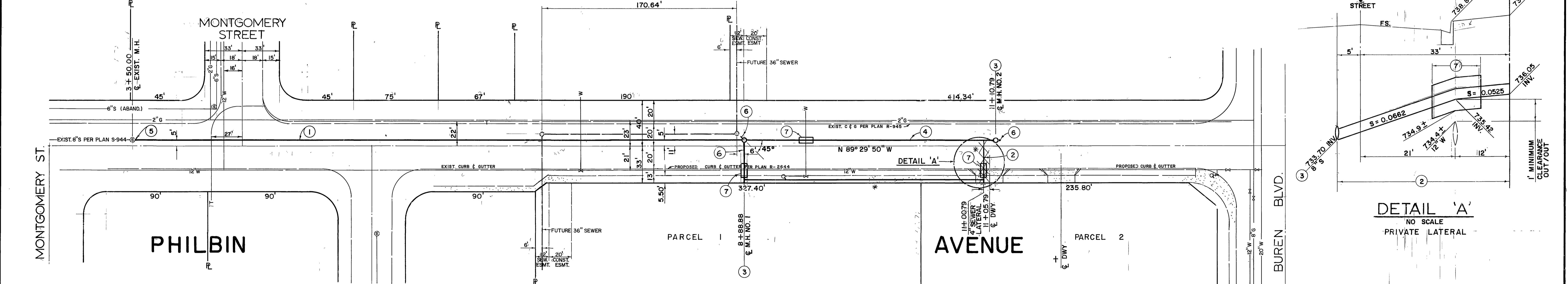


GENERAL NOTES

- IT SHALL BE THE RESPONSIBILITY OF THE CONTRACTOR TO CLEAR THE RIGHT OF WAY IN ACCORDANCE WITH THE PROVISIONS OF LAW AS IT AFFECTS EACH UTILITY INCLUDING IRRIGATION LINES AND APPURTENANCES AND AT NO COST TO THE CITY.
- CONSTRUCTION SHALL BE IN ACCORDANCE WITH THE CITY OF RIVERSIDE DEPARTMENT OF PUBLIC WORKS, STANDARD DRAWINGS, AND THE STANDARD SPECIFICATIONS FOR PUBLIC WORKS CONSTRUCTION, 1982 EDITION.
- LOCATION OF LATERALS TO BE DETERMINED IN THE FIELD AT THE DIRECTION OF THE OWNER. AVOID CONFLICT WITH PROPOSED AND/OR EXISTING FACILITIES.
- CONTRACTOR IS TO VERIFY EXISTING SEWER ELEVATION PRIOR TO CONSTRUCTION.
- NO FINISHED FLOOR ELEVATION SHALL BE LESS THAN 4" ABOVE THE SEWER FLOW LINE AT POINT OF CONNECTION WITH LATERAL HAVING A BACKWATER VALVE INSTALLED IN THE LATERAL.
- QUANTITIES SHOWN ARE FOR INFORMATION ONLY AND THE CITY OF RIVERSIDE IS NOT RESPONSIBLE FOR THEIR ACCURACY.
- ANY TRAFFIC CONTROL STRIPING OBLITERATED AND/OR BADLY WORN DURING CONSTRUCTION SHALL BE RESTORED BY THE CONTRACTOR WITHIN FIVE DAYS AFTER NOTIFICATION FROM THE CITY INSPECTORS.
- THE SEWER CONTRACTOR SHALL ADJUST MANHOLES TO FINAL GRADE AFTER PAVING IS COMPLETED.
- A PLUG SHALL BE INSTALLED AND WILL REMAIN IN PLACE WHERE THE NEW SEWER CONNECTS WITH THE EXISTING SEWER UNTIL THE NEW SEWER IS ACCEPTED BY THE CITY.
- THE PRIVATE ENGINEER SIGNING THESE PLANS IS RESPONSIBLE FOR ASSURING THE ACCURACY AND ACCEPTABILITY OF THE WORK HEREON. IN THE EVENT OF DISCREPANCIES ARISING DURING CONSTRUCTION, THE PRIVATE ENGINEER SHALL BE RESPONSIBLE FOR DETERMINING AN ACCEPTABLE SOLUTION AND REVISING THE PLANS FOR APPROVAL BY THE CITY.
- THE CONTRACTOR SHALL CALL IN A LOCATION REQUEST TO UNDERGROUND SERVICE ALERT (USA), PHONE NO. 1-800-422-4433, TWO WORKING DAYS BEFORE DIGGING. NO CONSTRUCTION PERMIT WILL BE ISSUED BY THE PUBLIC WORKS DEPARTMENT INVOLVING EXCAVATION FOR UNDERGROUND FACILITIES UNLESS THE APPLICANT HAS BEEN PROVIDED AN INQUIRY IDENTIFICATION NUMBER BY U.S.A.
- THE PRIVATE ENGINEER PREPARING THESE PLANS SHALL BE RESPONSIBLE FOR PRESERVING OR RE-ESTABLISHING AND REFERENCING SURVEY MONUMENTS DESTROYED, DISTURBED OR BURIED AS A RESULT OF CONSTRUCTION SHOWN HEREON.



PROFILE SCALES
 HORIZ. 1" = 40'
 VERT. 1" = 4'



CONSTRUCTION NOTES

- CONSTRUCT 6" V.C.P. SEWER MAIN
- CONSTRUCT 4" V.C.P. SEWER LATERAL PER CITY STD. DWG. NO. 562
- CONSTRUCT SEWER MANHOLE PER CITY STD. DWG. NO. 500
- CONSTRUCT 8" V.C.P. SEWER MAIN
- JOIN EXIST. 8" STUB
- INSTALL 8" V.C.P.
- ENCASE SEWER LATERAL PER C.W.D.-022 & C.W.D.-023
 1' MINIMUM CLEARANCE, (OUT/OUT), MUST BE MAINTAINED

QTY.

530 L.F.	530
76 L.F.	76
2 EA.	2
222 L.F.	222
8 L.F.	8
120 S.F.	120

BENCH MARK:
 G3-A BRASS DISK IN MONUMENT
 VAULT AT Q.P. VAN BUREN BLVD. AND WELLS
 ELEV. = 742.23
 * As built 11/86 TC

SCALE: 1" = 40'

PACIFIC BELL	SO. CALIFORNIA GAS CO.	CITY OF RIVERSIDE WATER SYSTEM	CITY OF RIVERSIDE ELECTRICAL SERVICES SECTION
<i>ER Lewis</i>	<i>E.C. ... 11-30-80</i>	<i>... 4/16/85</i>	<i>... 11/30/85</i>
APPROVED	APPROVED	APPROVED	APPROVED

PLANS PREPARED FOR:
ECONO LUBE & TUNE, INC.
 4911 BIRCH STREET, SUITE 100
 NEWPORT BEACH, CALIFORNIA, 92660
 (714) 851-2259

VALLEY CONSULTANTS, INC.
 2122 SOUTH GRAND AVENUE SUITE "G"
 SANTA ANA, CALIFORNIA, 92705
 (714) 754-1510
Ronald L. Lacher 7-3-84
 RONALD L. LACHER RCE 20949 DATE

MARK	REVISIONS	APPR. DATE
DESIGNED BY V.C.I.	DRAWN BY V.C.I.	CHECKED BY V.C.I.

CITY OF RIVERSIDE CALIFORNIA
 DEPARTMENT OF PUBLIC WORKS

APPROVED BY	BY	DATE
PRINCIPAL ENGINEER	<i>...</i>	5-8-85
PARK DEPARTMENT		
TRAFFIC DIVISION		
CHIEF P.W. ENGR.	<i>...</i>	5/8/85

APPROVED BY
William D. ...
 DIRECTOR OF PUBLIC WORKS
 DATE **MAY 8, 1985**

SEWER PLAN AND PROFILE
 PM 20022 (R-41-834, C-44-834)
PHILBIN AVENUE
 100' W/O MONTGOMERY ST. TO 250' W/O VAN BUREN BLVD.
 PROJECT NO. **S-1368**
 SHEET **1** OF **1**
 HORIZ. SCALE: 1" = 40' VERT. SCALE: 1" = 4' FILE NO.