

INDEX MAP

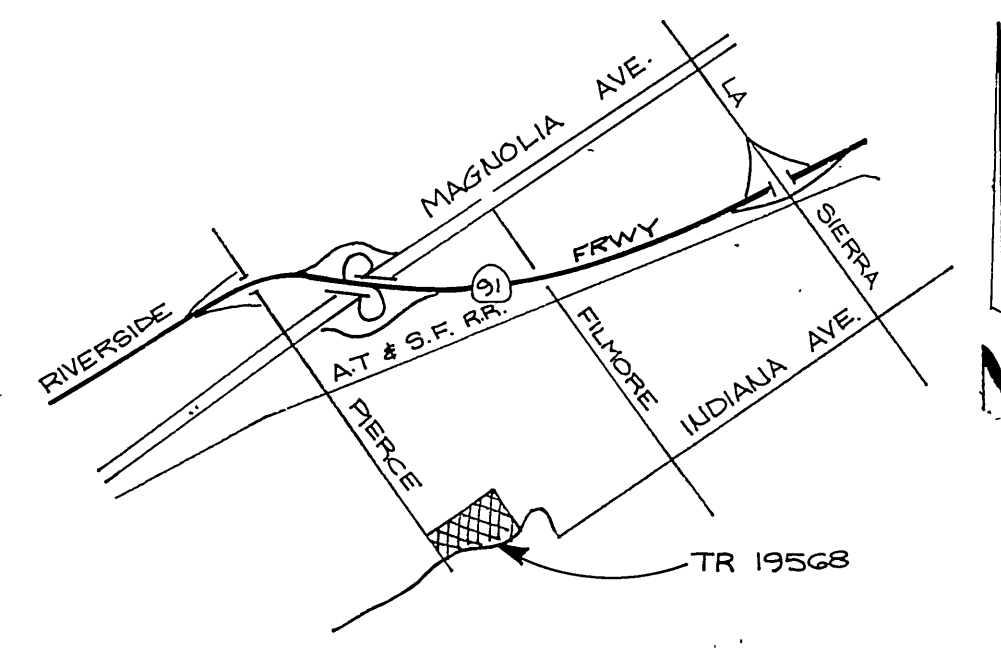
SCALE: 1" = 80'

GENERAL NOTES

1. THE PRIVATE ENGINEER SIGNING THESE PLANS IS RESPONSIBLE FOR THE ACCURACY AND ACCEPTABILITY OF THE WORK HEREON. IN THE EVENT OF DISCREPANCIES ARISING DURING CONSTRUCTION THE PRIVATE ENGINEER SIGNING THE PLANS SHALL BE RESPONSIBLE FOR DETERMINING AN ACCEPTABLE SOLUTION AND REVISING THE PLANS FOR APPROVAL BY THE CITY.
2. IT SHALL BE THE RESPONSIBILITY OF THE CONTRACTOR TO CLEAR THE RIGHT-OF-WAY IN ACCORDANCE WITH THE PROVISIONS OF LAW AS IT AFFECTS EACH UTILITY INCLUDING IRRIGATION LINES AND APPURTENANCES AND AT NO COST TO THE CITY.
3. CONSTRUCTION SHALL BE IN ACCORDANCE WITH THE CITY OF RIVERSIDE DEPARTMENT OF PUBLIC WORKS, STANDARD DRAWINGS, AND THE STANDARD SPECIFICATIONS FOR PUBLIC WORKS CONSTRUCTION, 1982 EDITION.
4. LOCATION OF LATERALS TO BE DETERMINED IN THE FIELD AT THE DIRECTION OF THE OWNER. AVOID CONFLICT WITH PROPOSED AND/OR EXISTING FACILITIES.
5. CONTRACTOR IS TO VERIFY EXISTING SEWER ELEVATION PRIOR TO CONSTRUCTION.
6. THE SEWER CONTRACTOR SHALL ADJUST MANHOLES TO FINAL GRADE AFTER PAVING IS COMPLETED.
7. NO FINISHED FLOOR ELEVATION SHALL BE LESS THAN 4' ABOVE THE SEWER FLOW LINE AT THE POINT OF CONNECTION WITHOUT HAVING A PROPER BACKWATER VALVE INSTALLED IN THE LATERAL.
8. A PLUG WALL SHALL BE INSTALLED AND WILL REMAIN IN PLACE WHERE THE NEW SEWER CONNECTS WITH THE EXISTING SEWER UNTIL THE NEW SEWER IS ACCEPTED BY THE CITY.
9. THE CONTRACTOR SHALL CALL IN A LOCATION REQUEST TO UNDERGROUND SERVICE ALERT (USA), PH. No. 1-800-422-4133 TWO WORKING DAYS BEFORE DIGGING. NO CONSTRUCTION PERMIT WILL BE ISSUED BY THE PUBLIC WORKS DEPT. INVOLVING EXCAVATION FOR UNDERGROUND FACILITIES UNLESS THE APPLICANT HAS BEEN PROVIDED AN INQUIRY IDENTIFICATION NUMBER BY U.S.A.

CONSTRUCTION NOTES

1. CONSTRUCT MANHOLE PER CITY OF RIVERSIDE STD. DWG. No. 300
2. INSTALL 8" V.C.P. SEWER MAIN
3. INSTALL 4" V.C.P. SEWER LATERALS PER CITY OF RIVERSIDE STD. DWG. No. 562.



VICINITY MAP

NO SCALE

BENCH MARK
U.S.C. & G.S. B.M. K-38 1924 Disk in headwall on N.W. Cor. Fillmore and Santa Fe R.R. Tracks F.B. 706/34 Elev. 722.010

CITY OF RIVERSIDE
WATER SYSTEM
[Signature]
APPROVED WATER DATE 3-27-85

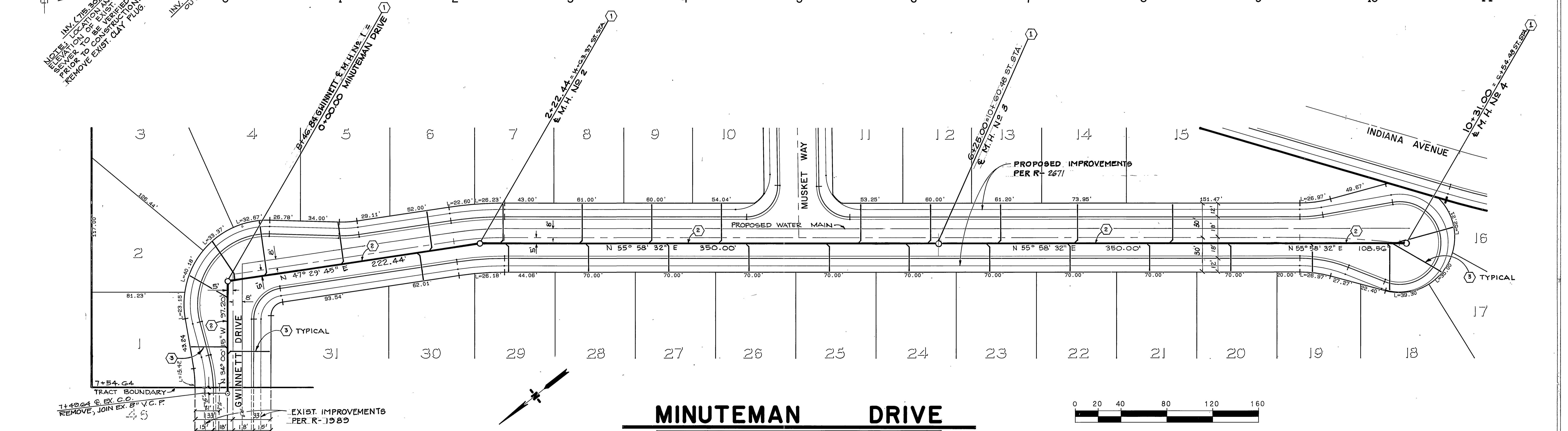
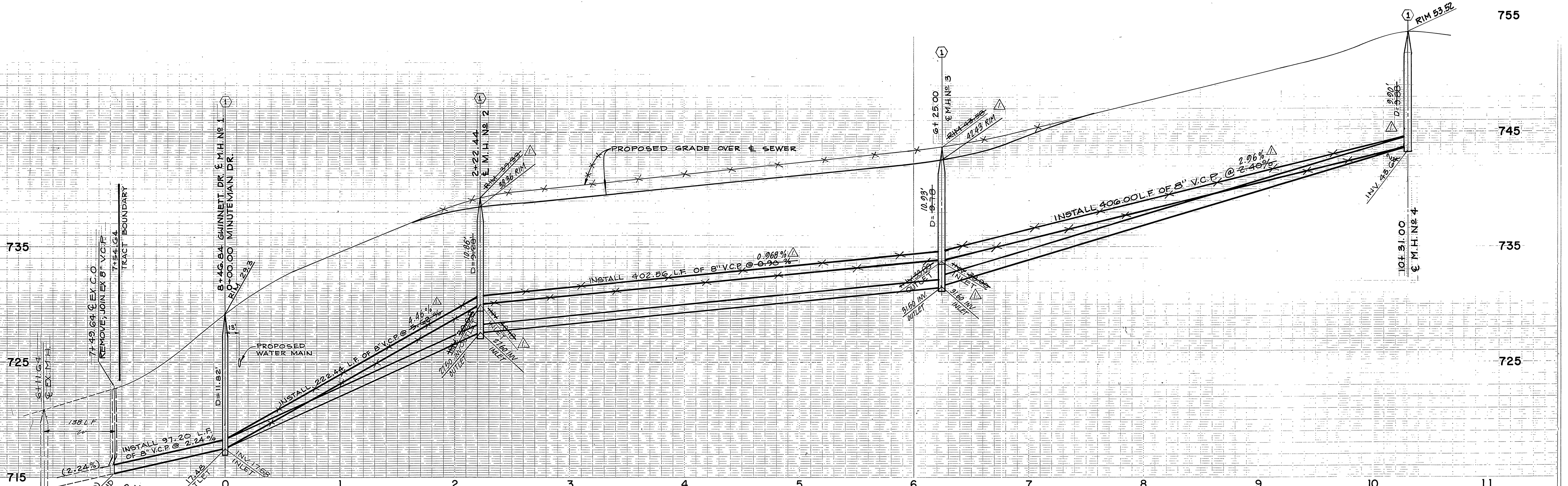
J. F. DAVIDSON ASSOCIATES
CIVIL ENGINEERS SURVEYORS PLANNERS
3426 TENTH STREET 11200 S. MT. VERNON AVE.
RIVERSIDE, CAL. COLTON, CAL.
APPROVED BY: *[Signature]* 11/27/84
R. C. E. No. 14312 DATE

CITY OF RIVERSIDE, CALIFORNIA
DEPARTMENT OF PUBLIC WORKS
APPROVED BY: *[Signature]*
PRINCIPAL ENGINEER
PARK DEPARTMENT
TRAFFIC DIVISION
CHIEF P. W. ENGR.
DATE: APRIL 12, 1985

INDEX OF
SEWER PLAN and PROFILE
TRACT No 19568
TITLE SHEET
HORIZ. SCALE: 1" = VERT. SCALE: 1" =

PROJECT NO.
S-1380
SHEET 1 OF 2
FILE NO. 83-8007

MARK REVISIONS APPR. DATE
DESIGNED BY Goldi DRAWN BY Goldi CHECKED BY *[Signature]*



BENCH MARK
U.S.C. & G.S. B.M. K-38 1924 Disk in
headwall on N.W. Cor. Fillmore and
Santa Fe R.R. Tracks F.B. 706/34
Elev. 722.010.

CITY OF RIVERSIDE WATER SYSTEM APPROVED WATER DATE: <i>3-27-85</i>		J. F. DAVIDSON ASSOCIATES CIVIL ENGINEERS SURVEYORS PLANNERS 3426 TENTH STREET 11200 S. MT. VERNON AVE. RIVERSIDE, CAL. COLTON, CAL. APPROVED BY: <i>Robert M. Anglin</i> 11/27/84 R.C.E. No 14312 DATE		CITY OF RIVERSIDE, CALIFORNIA DEPARTMENT OF PUBLIC WORKS APPROVED BY: <i>William S. Gardner</i> PRINCIPAL ENGINEER DIRECTOR OF PUBLIC WORKS DATE: <i>April 12, 1985</i>		SEWER PLAN and PROFILE TRACT No 19568 GWINNETT DRIVE MINUTEMAN DRIVE SHEET 2 OF 2 FILE No. 83-8007	
TRACT 5755-3		INDEX W/F		PROJECT NO. S-1380		HORIZ. SCALE: 1" = 40' VERT. SCALE: 1" = 4'	