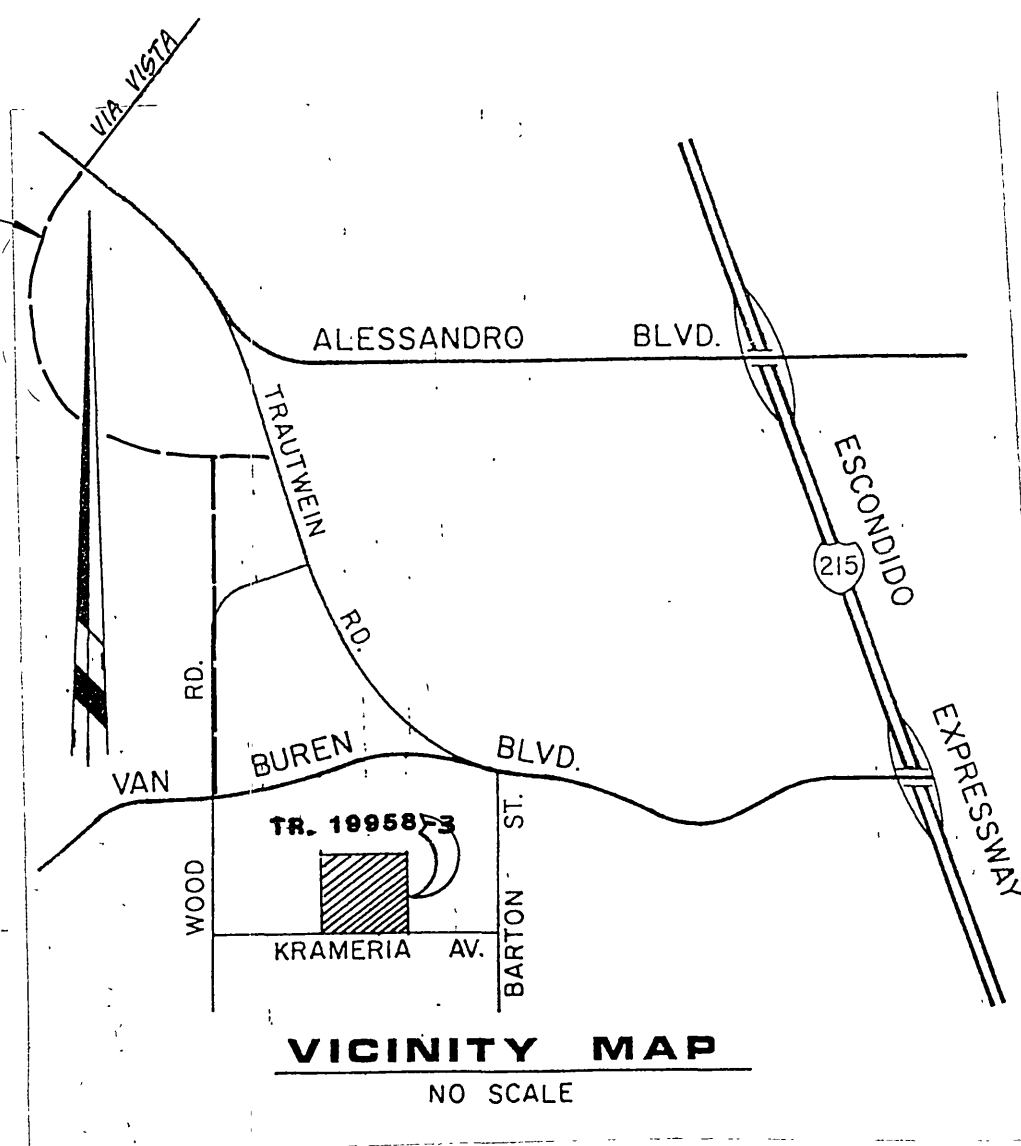




OFF-SITE GRAVITY SEWER TRUNK (NOT A PART)



VICINITY MAP
NO SCALE

KRAMERIA AVENUE

INDEX MAP

SCALE: 1"=100'

GENERAL NOTES : SEWER CONSTRUCTION

- All materials used and installation shall conform to Riverside County Subdivision Improvement Ordinance 461, and City of Riverside Dept. of Public Works, Standard Drawings, and the Standard Specifications for Public Works Construction, 1982 Edition.
- All sewer mains and laterals shall be extra strength vitrified clay pipe.
- Separation requirements between sewer and water lines shall conform to County Standard No. 609.
- Manhole construction shall conform to City of Riverside Std. Dwg. No. 500.
- Sewer lateral construction shall conform to City of Riverside Std. Dwg. No. 562.
- Grading over sewer mains shall be done in such a manner as to prevent ponding of water.
- It shall be the sewer contractor's responsibility to set manhole cover to finish grade after paving of street.
- Sewer profile elevations are to flowline (conduit invert).
- All pipe lengths are from centerline manhole to centerline manhole.
- Stationing of sewer is based on street centerline stationing.

LEGEND

○ Sewer Manhole

INDEX OF DRAWINGS

Drawing/Sheet No.	Title
1 of 7	Location Map, Notes, Index of Drawings, Index Map, Estimate of Quantities
2 of 7	COLE AVENUE Sta. 20+96 to sta. 23+02
3 of 7	CHINOTTO LANE sta. 20+96 to sta. 7+81
4 of 7	SHAMOUTI DRIVE sta. 0+08 to sta. 8+02
5 of 7	TAROCO LANE sta. 0+06 to sta. 7+65
6 of 7	TANGERINE CIRCLE, LOQUAT CIRCLE sta. 0-06 to sta. 8+62
7 of 7	TROVITA CIRCLE sta. 9+58 to sta. 13+10. RUBY RED COURT sta. 12+28 to sta. 15+87

ESTIMATE OF QUANTITIES

4148 Feet 8 inch VCP sewer
3477 Feet 4 inch VCP sewer
12 each sewer manhole
103 each WYES
1 each cleanout

CITY OF RIVERSIDE, CALIFORNIA DEPARTMENT OF PUBLIC WORKS			
APPROVED BY	BY	DATE	APPROVED BY
PRINCIPAL ENGINEER			William D. Gardner
PARK DEPARTMENT			DIRECTOR OF PUBLIC WORKS
TRAFFIC DIVISION			
CHIEF P. W. ENGR.			
		DATE	12-4-86

DESIGNED BY	CH	DRAWN BY	JR	CHECKED BY	CH
DATE	3/2/86				

APPROVED BY: *[Signature]*
REGISTERED CIVIL ENGINEER NO. 17550
DATE: 3/29/85

J. F. DAVIDSON ASSOCIATES
CIVIL ENGINEERS • SURVEYORS • PLANNERS

11200 SO. MT. VERNON AVE., #D RIVERSIDE, CA 92502 (714) 686-0844
74-075 EL PASO, #A-12 COLTON, CA 92324 (714) 625-1082
P.O. BOX 157 PALM DESERT, CA 92260 (919) 346-5591

SCALE: AS SHOWN
DATE: OCT 1984

BENCH MARK: RIVERSIDE COUNTY ELEV. 1006.70 DATE: 1971
BRASS DISK FLUSH & MARKED V.B. 10-64, 0.6 MI E ON VAN BUREN BLVD. FROM INT. OF VAN BUREN & WOOD ROAD, 205' N. OF VAN BUREN AT THE N.E. SIDE OF GRANITE BOULDERS, ON TOP OF 3'x13'x18' BOULDER.

CONSTRUCTION NOTES

- ① Construct sewer manhole per City of Riverside Std. No. 500.

IN THE COUNTY OF RIVERSIDE CALIFORNIA

TRACT 19958-3

SCHEDULE "A"
SEWER PLAN & PROFILE

TITLE SHEET

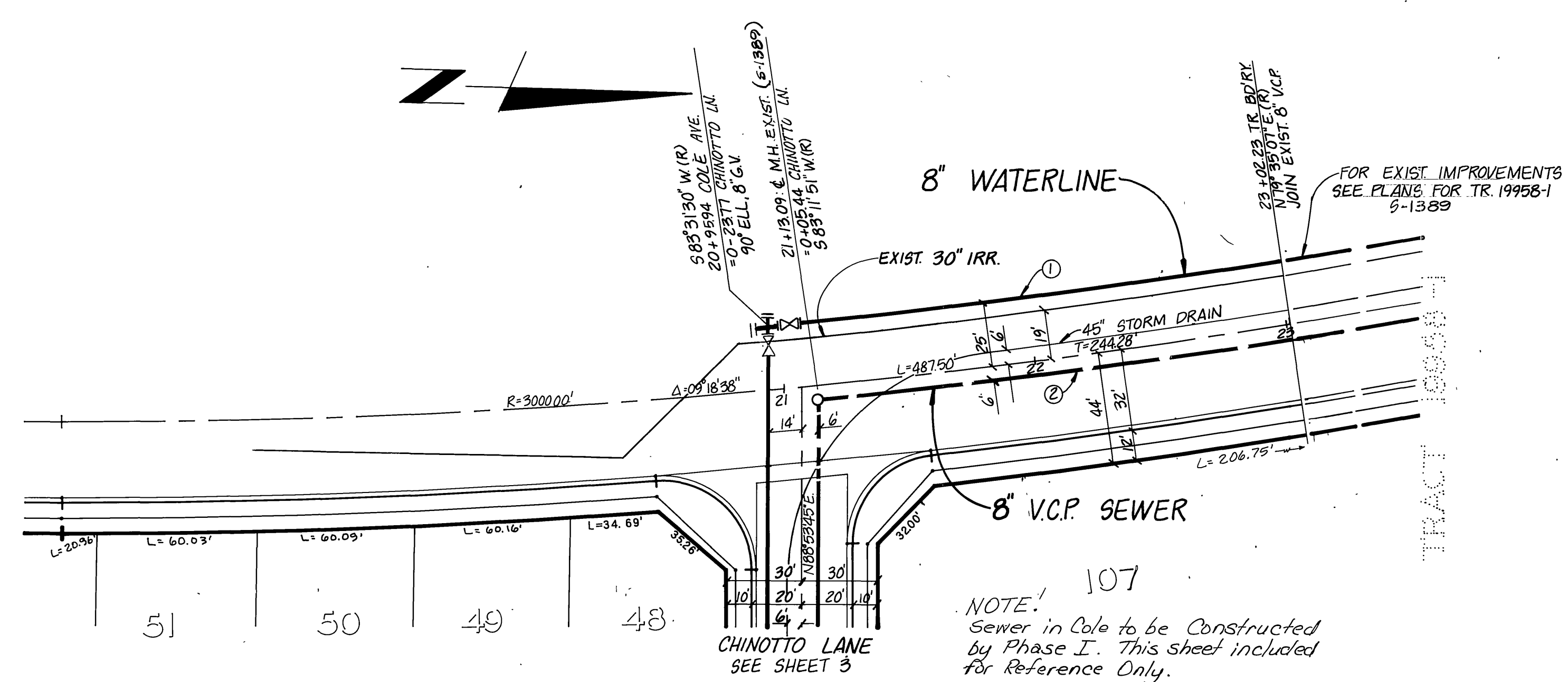
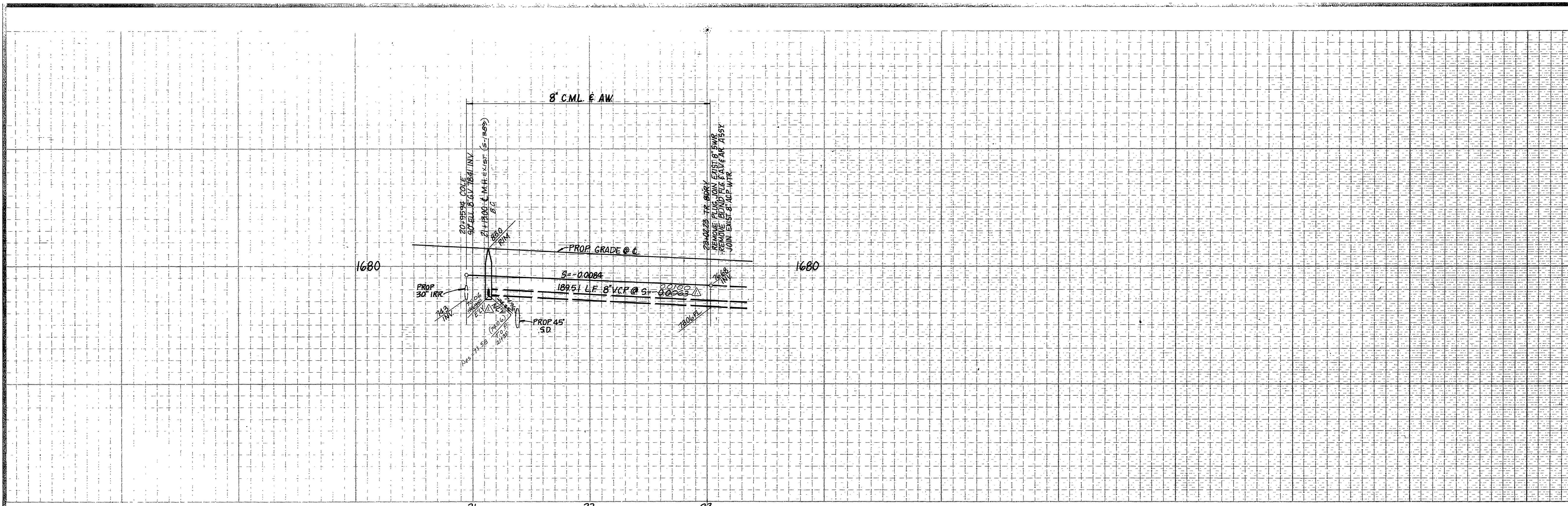
SEC 20 & 29 T 3 S R 4 W

FOR S.I.C.

INDEX/CD

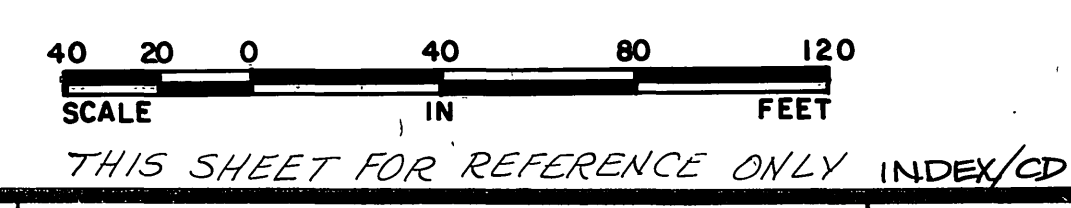
1 OF 7 SHEETS
9-1391

W.O. FILE NO. 84- 8390



COLE AVENUE

CURVE DATA			
Δ	R	L	T
03°56'23"	2975.00'	204.56'	102.32'
03°36'44"	3006.00'	189.51'	94.79'



**CITY OF RIVERSIDE, CALIFORNIA
DEPARTMENT OF PUBLIC WORKS**

APPROVED BY	BY	DATE	APPROVED BY
PRINCIPAL ENGINEER			<i>William D. Hardman</i>
PARK DEPARTMENT			DIRECTOR OF PUBLIC WORKS
TRAFFIC DIVISION			
CHIEF P.W. ENGR.	<i>W.D.</i>	<i>12-4-86</i>	

DESIGNED BY	DRAWN BY	CHECKED BY
<i>CH</i>	<i>JR</i>	<i>CH</i>

REVISIONS:

- Δ REVISED TO 3RD PHASE 5/2/88
- Δ REVD GRADES TO AS BUILT PER PHASE I

APPROVED BY:

John W. Canty

REGISTERED CIVIL ENGINEER NO. 11550 DATE: 3/29/85

J. F. DAVIDSON ASSOCIATES
CIVIL ENGINEERS • SURVEYORS • PLANNERS

11200 SO. MI. VERNON AVE., #D RIVERSIDE, CA 92052 (714) 686-0844

74-075 EL PASEO, #A-12 COLTON, CA 92324 (714) 825-1082

PALM DESERT, CA 92260 (619) 346-5691

P.O. BOX 157 TEMECULA, CA 92390 (714) 676-5335

SCALE: HORIZ. 1" = 40' VERT. 1" = 8'

DATE: OCT 1984

BENCH MARK: V.B. 10-64 RIVERSIDE COUNTY ELEV. 1100.870 DATE: 1971

BRASS DISK FLUSH & MARKED V.B. 10-64, 0.6 MI E ON VAN BUREN BLVD. FROM & INT. OF VAN BUREN & WOOD ROAD, 205' N. OF VAN BUREN AT THE N.E. SIDE OF GRANITE BOULDERS, ON TOP OF 3'x15'x18' BOULDER.

IN THE COUNTY OF RIVERSIDE CALIFORNIA

TRACT 19958-3A

SCHEDULE "A"

SEWER PLAN & PROFILE

COLE AVENUE

SEC 20 & 29 T. 3 S. R. 4 W.

S. I. C.

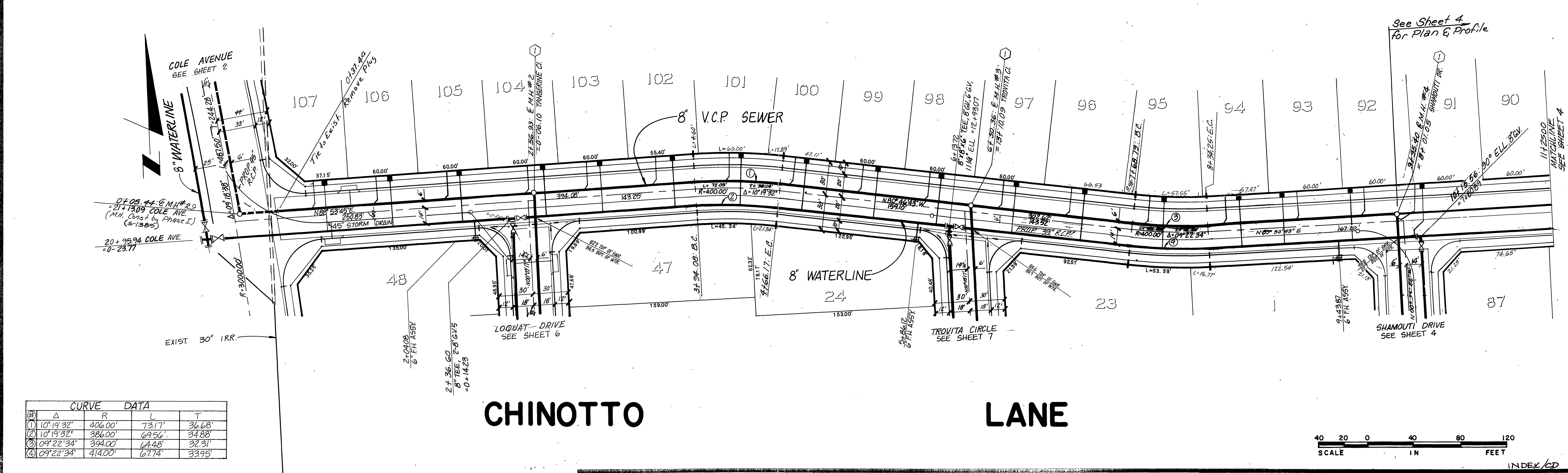
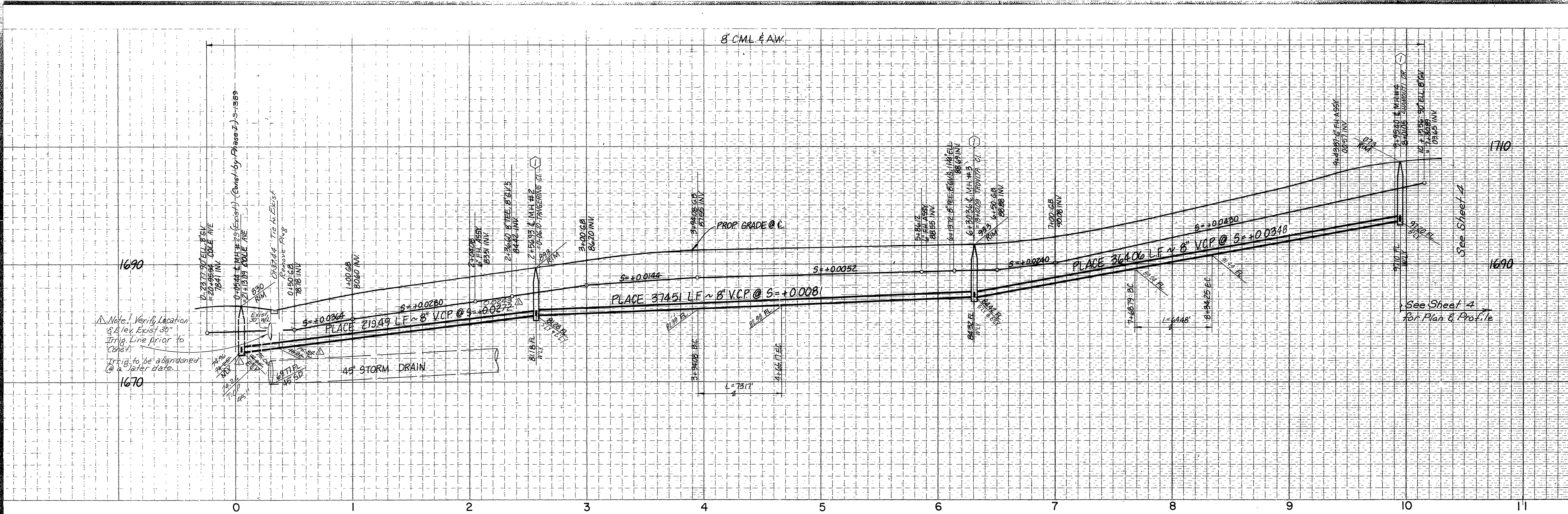
INDEX/CD

2

OF 7 SHEETS

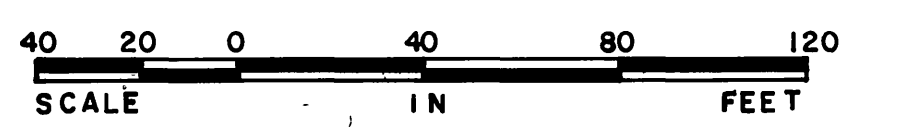
S-1391

I.W.O.F.B. FILE NO. 84-8390



④	Δ	R	L	T
①	10°19'32"	406.00'	73.17'	36.68'
②	10°19'32"	386.00'	69.56'	34.88'
③	09°22'34"	394.00'	64.48'	32.31'
④	09°22'34"	414.00'	67.74'	33.95'

CHINOTTO LANE



CITY OF RIVERSIDE, CALIFORNIA
DEPARTMENT OF PUBLIC WORKS

APPROVED BY	BY	DATE	APPROVED BY
PRINCIPAL ENGINEER			<i>William D. Hansen</i>
PARK DEPARTMENT			DIRECTOR OF PUBLIC WORKS
TRAFFIC DIVISION			
CHIEF P.W. ENGR.	<i>Will Hays</i>	DATE 12-4-86	

APPROVED BY: *John W. Coody*
 REGISTERED CIVIL ENGINEER NO. 17550 C DATE: 3/29/85

REVISOR: CH
 DRAWN BY: JR
 CHECKED BY: CH

J. F. DAVIDSON ASSOCIATES
 CIVIL ENGINEERS • SURVEYORS • PLANNERS

11200 SO. MI. VERNON AVE. #D COLTON, CA 92324 (714) 825-1082
 74-075 EL PASO, #A-12 PALM DESERT, CA 92260 (619) 346-5691
 P.O. BOX 493 RIVERSIDE, CA 92502 (714) 686-0844

SCALE: HORIZ. 1" = 40'
 VERT. 1" = 8'

DATE: OCT 1984

BENCH MARK: RIVERSIDE COUNTY V.B. 10-64 ELEV. 1100.670 DATE: 1971
 BRASS DISK FLUSH & MARKED V.B. 10-64, 0.6 MI E ON VAN BUREN BLVD. FROM INT. OF VAN BUREN & WOOD ROAD, 205' N. OF VAN BUREN AT THE N.E. SIDE OF GRANITE BOULDERS, ON TOP OF 3'x15'x18' BOULDER.

IN THE COUNTY OF RIVERSIDE CALIFORNIA

TRACT 19958-3A

SCHEDULE "A"

3

SEWER PLAN & PROFILE

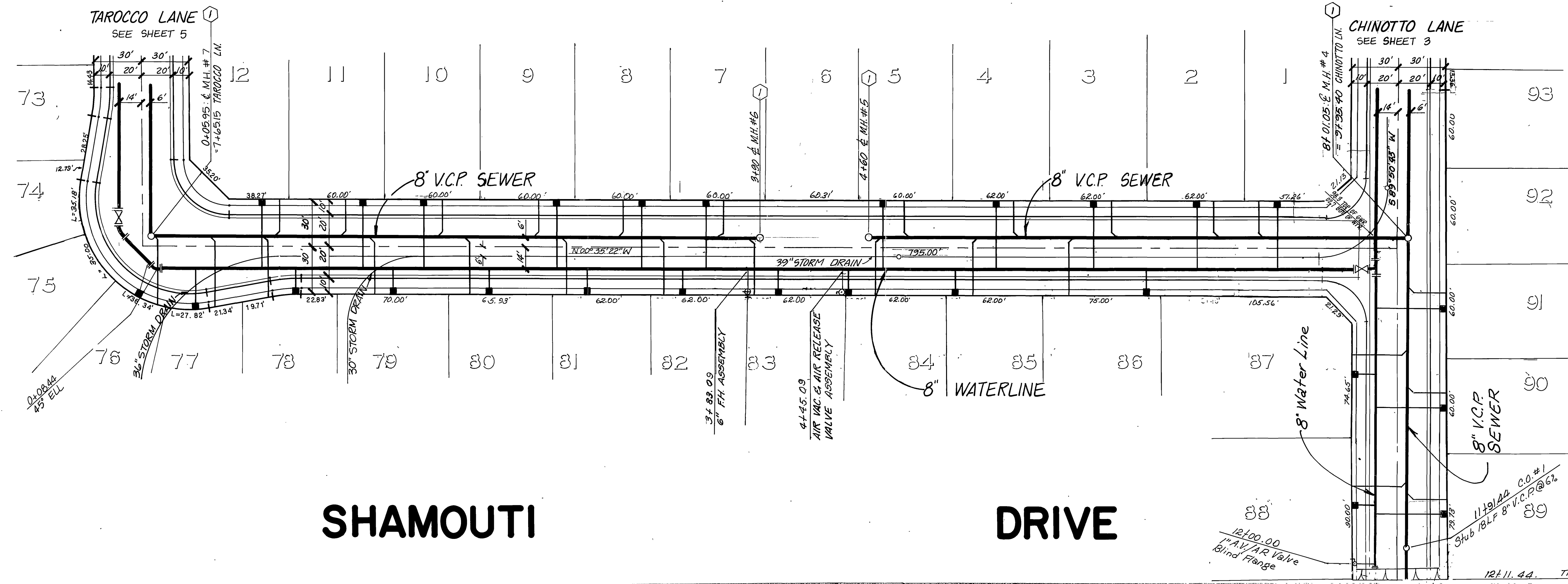
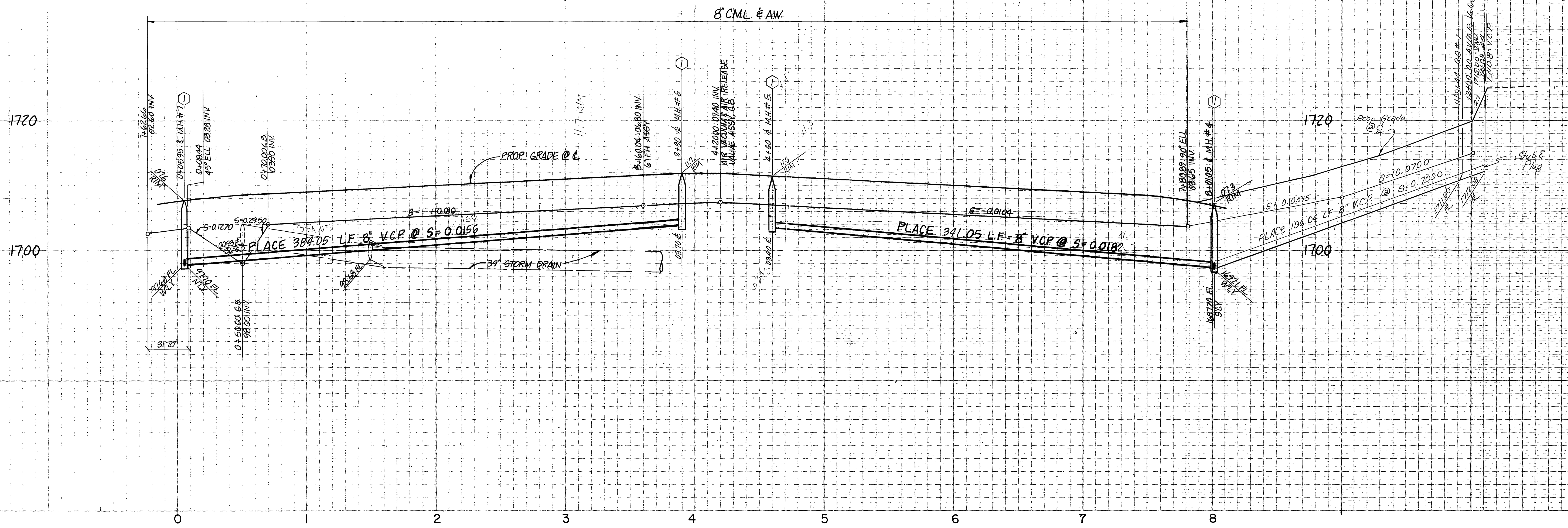
CHINOTTO LANE

OF 7 SHEETS

SEC 20 & 29 T. 3 S. R. 4 W. S-1391

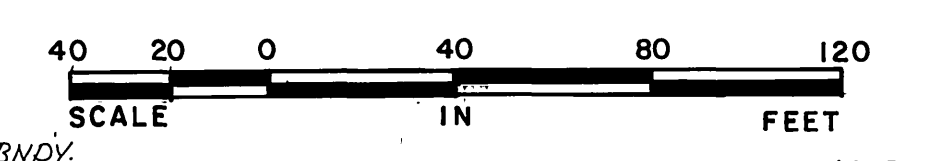
FOR S.I.C.

W/O FILE NO. 84-8390



SHAMOUTI

DRIVE



CITY OF RIVERSIDE, CALIFORNIA DEPARTMENT OF PUBLIC WORKS			
APPROVED BY	BY	DATE	APPROVED BY
PRINCIPAL ENGINEER			<i>William D. Gardner</i>
PARK DEPARTMENT			DIRECTOR OF PUBLIC WORKS
TRAFFIC DIVISION			
CHIEF P.W. ENGR.			
			DATE 12-4-86

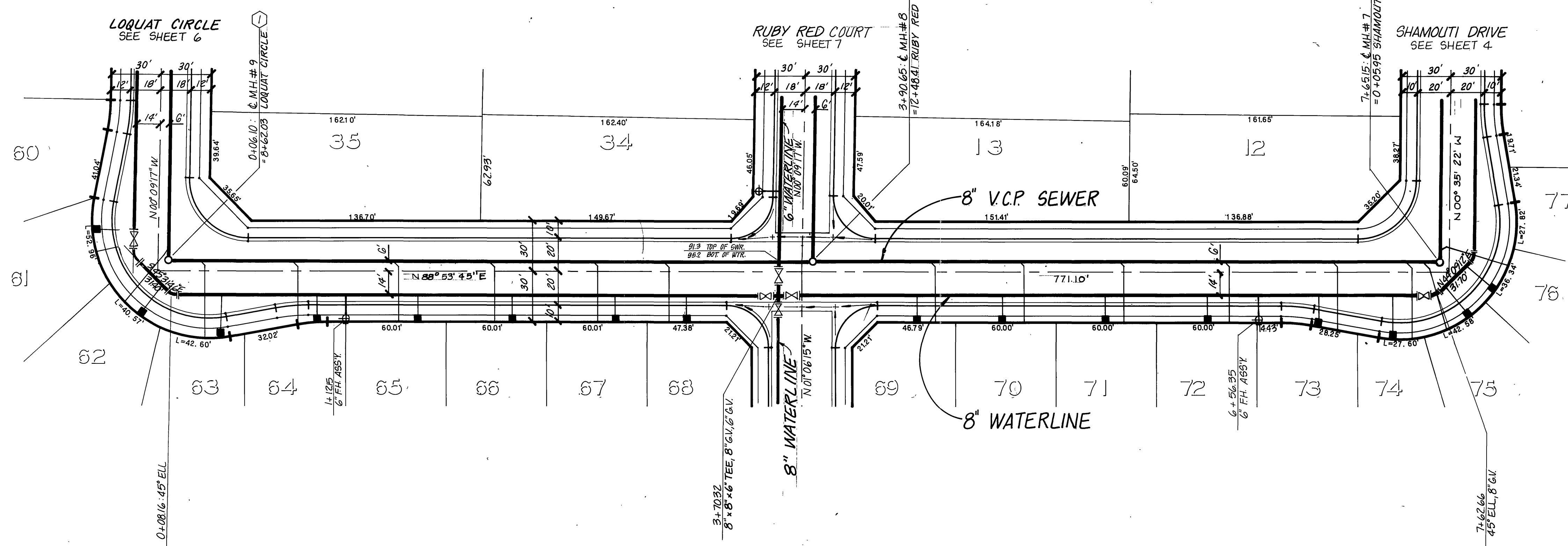
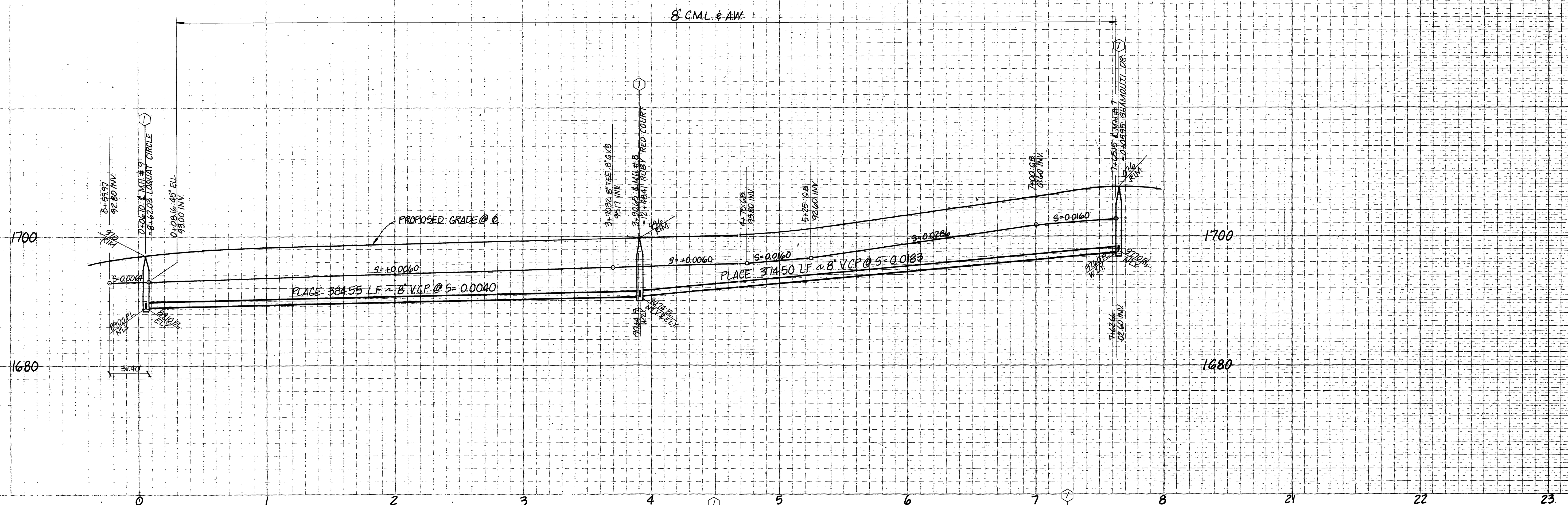
DESIGNED BY	CH	DRAWN BY	JR	CHECKED BY	CH
REVISIONS					
MARK		APPR	DATE		
			5/1/86		

APPROVED BY:
John W. Canty
REGISTERED CIVIL ENGINEER NO. 17556
DATE: 3/29/85

SCALE
HORIZ. 1" = 40'
VERT. 1" = 8'
DATE
OCT 1984

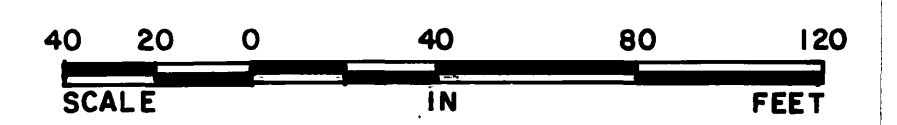
RIVERSIDE COUNTY
DATE: 8/11/84
BRASS DISK FLUSH & MARKED V.B. 10-64, 0-6 MI. E. ON VAN BUREN BLVD. FROM INT. OF VAN BUREN & WOOD ROAD, 205' N. OF VAN BUREN AT THE N.E. SIDE OF GRANITE BOULDERS, ON TOP OF 3'x15'x18' BOULDER.

TRACT 19958-3 Δ
SCHEDULE "A"
SEWER PLAN & PROFILE
SHAMOUTI DRIVE
SEC 20 & 29 T. 3 S. R. 4 W.
S. I. C.
INDEX/CD
4
OF 7 SHEETS
S-1391
W.C. FILE NO. 84-8390



TAROCCO

LANE

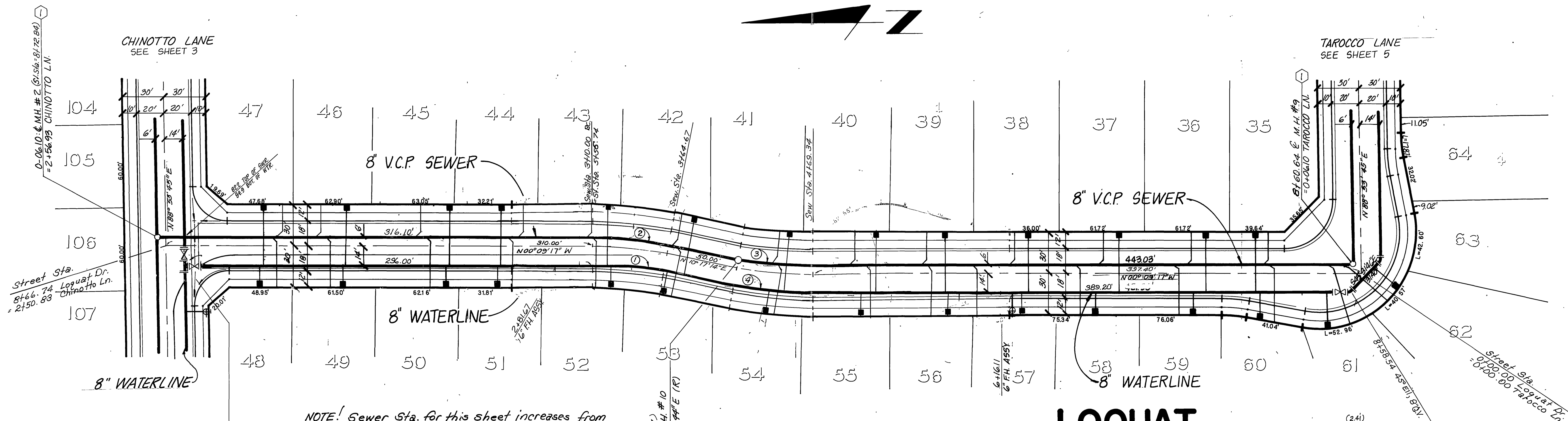
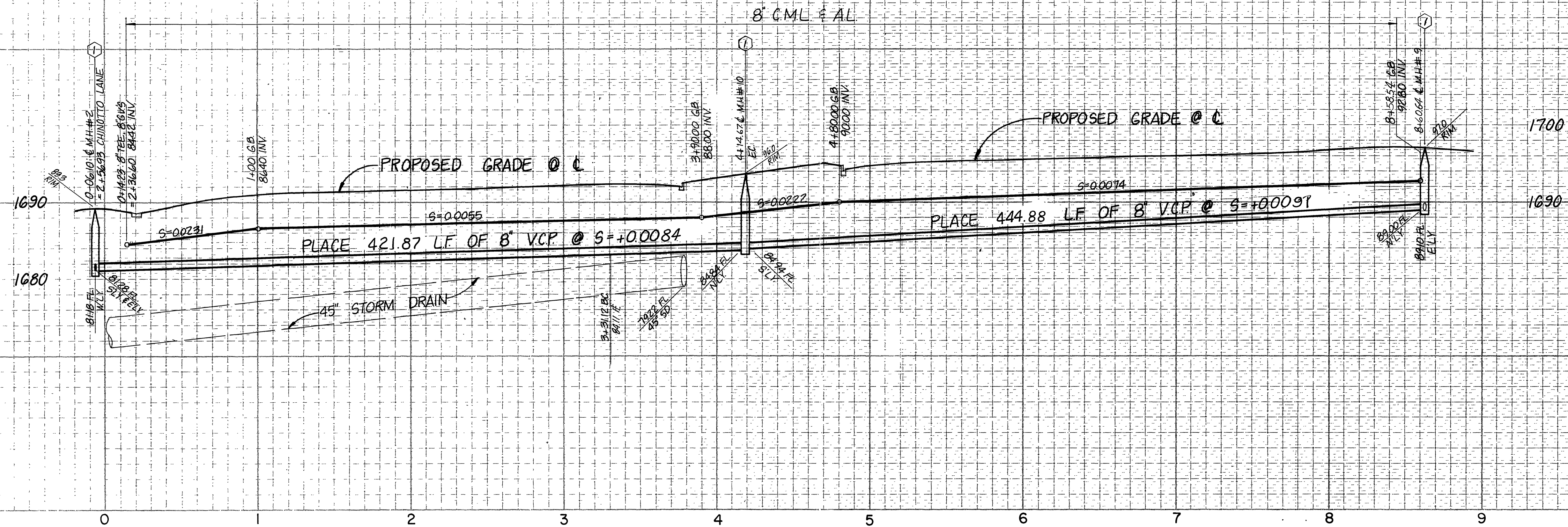


CITY OF RIVERSIDE, CALIFORNIA DEPARTMENT OF PUBLIC WORKS			
APPROVED BY	BY	DATE	APPROVED BY
PRINCIPAL ENGINEER			<i>William D. Gardner</i>
PARK DEPARTMENT			DIRECTOR OF PUBLIC WORKS
TRAFFIC DIVISION			
CHIEF P.W. ENGR.	<i>WLR</i>	<i>12/4/86</i>	DATE <i>12-4-86</i>

APPROVED BY:	<i>John W. Coates</i>
REGISTERED CIVIL ENGINEER NO. 17550	DATE: <i>3/29/87</i>
REVISOR	DATE
DESIGNED BY <i>CH</i>	DRAWN BY <i>J.R.</i>
CHECKED BY <i>C.H.</i>	DATE <i>3/29/86</i>

J. F. DAVIDSON ASSOCIATES CIVIL ENGINEERS • SURVEYORS • PLANNERS			
P.O. BOX 493 RIVERSIDE, CA 92502 (714) 686-0844	11200 SO. MT. VERNON AVE., #D COLTON, CA 92324 (714) 825-1082	74-075 EL PASO, #A-12 PALM DESERT, CA 92260 (619) 346-5691	P.O. BOX 157 TEMECULA, CA 92390 (714) 676-5335
SCALE HORIZ. 1" = 40'	VERT. 1" = 8'	DATE: 1971	BENCH MARK: V.B. 10-64 RIVERSIDE COUNTY ELEV. 1700.670
BRASS DISK FLUSH & MARKED V.B. 10-64, 0.6 MI. E. ON VAN BUREN BLVD. FROM INT. OF VAN BUREN & WOOD ROAD, 205' V. OF VAN BUREN AT THE N.E. SIDE OF GRANITE BOULDERS, ON TOP OF 3'x15'x18' BOULDER.			
DATE: OCT 1984			

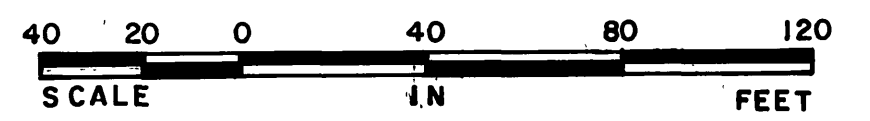
IN THE COUNTY OF RIVERSIDE CALIFORNIA			
TRACT 19958-3 Δ W			
SCHEDULE "A"			
SEWER		PLAN & PROFILE	
TAROCCO LANE			
SEC 20 B29	T. 3 S.	R. 4 W.	5
S. I. C.			OF 7 SHEETS
FOR			9-1391
WO FB FILE NO. 84-8390			



NOTE: Sewer Sta. for this sheet increases from 0+00 @ Int. of Chinotto & Loguat Dr.

STATION	Δ	R	L	T
1	10°26'31"	286.00'	52.12'	26.13'
2	10°26'31"	306.00'	55.77'	27.96'
3	10°26'31"	294.00'	53.98'	26.86'
4	10°26'31"	314.00'	57.23'	28.69'

LOQUAT CIRCLE



CITY OF RIVERSIDE, CALIFORNIA
DEPARTMENT OF PUBLIC WORKS

APPROVED BY	BY	DATE	APPROVED BY
PRINCIPAL ENGINEER			<i>William D. Gardner</i>
PARK DEPARTMENT			DIRECTOR OF PUBLIC WORKS
TRAFFIC DIVISION			
CHIEF P. W. ENGR.			

DATE 12-4-86

APPROVED BY: *John W. Canty*
REGISTERED CIVIL ENGINEER NO. 17550 DATE: 2/9/85

DESIGNED BY: CH DRAWN BY: JR CHECKED BY: CH DATE: _____

REVISIONS:

Δ	REVISED TO 3RD PHASE, 5/2/88
---	------------------------------

J. F. DAVIDSON ASSOCIATES
CIVIL ENGINEERS • SURVEYORS • PLANNERS

11200 SO. MI. VERNON AVE. #D PALM DESERT, CA 92260 (714) 886-0844

74-075 EL PASO, #A-12 PALM DESERT, CA 92260 (619) 346-5691

P.O. BOX 493 RIVERSIDE, CA 92502 (714) 886-0844

P.O. BOX 157 TEMECULA, CA 92590 (714) 676-5335

SCALE: HORIZ. 1" = 40' VERT. 1" = 8'

DATE: OCT 1984

BENCH MARK: V.B. 10-64 BRASS DISK FLUSH & MARKED V.B. 10-64, 0.6 MI. E ON VAN BUREN BLVD. FROM INT. OF VAN BUREN & HOOD ROAD, 205' N. OF VAN BUREN AT THE N.E. SIDE OF GRANITE BOULDERS, ON TOP OF 3'x15'x18' BOULDER.

IN THE COUNTY OF RIVERSIDE CALIFORNIA

TRACT 19958-3

SCHEDULE "A"

SEWER PLAN & PROFILE

TANGERINE CIRCLE
LOQUAT CIRCLE

SEC 20 & 29 T.3 S. R.4 W.

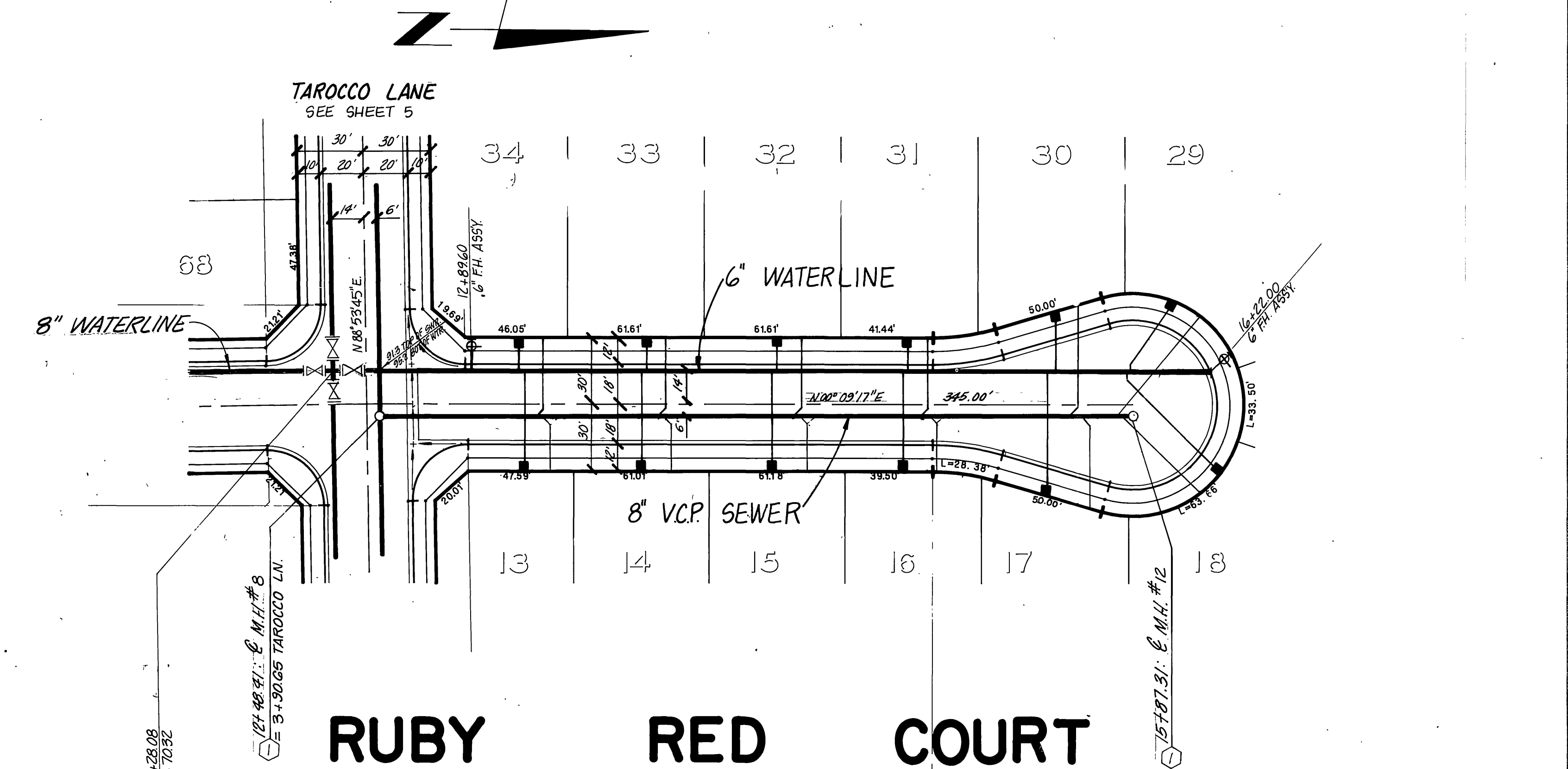
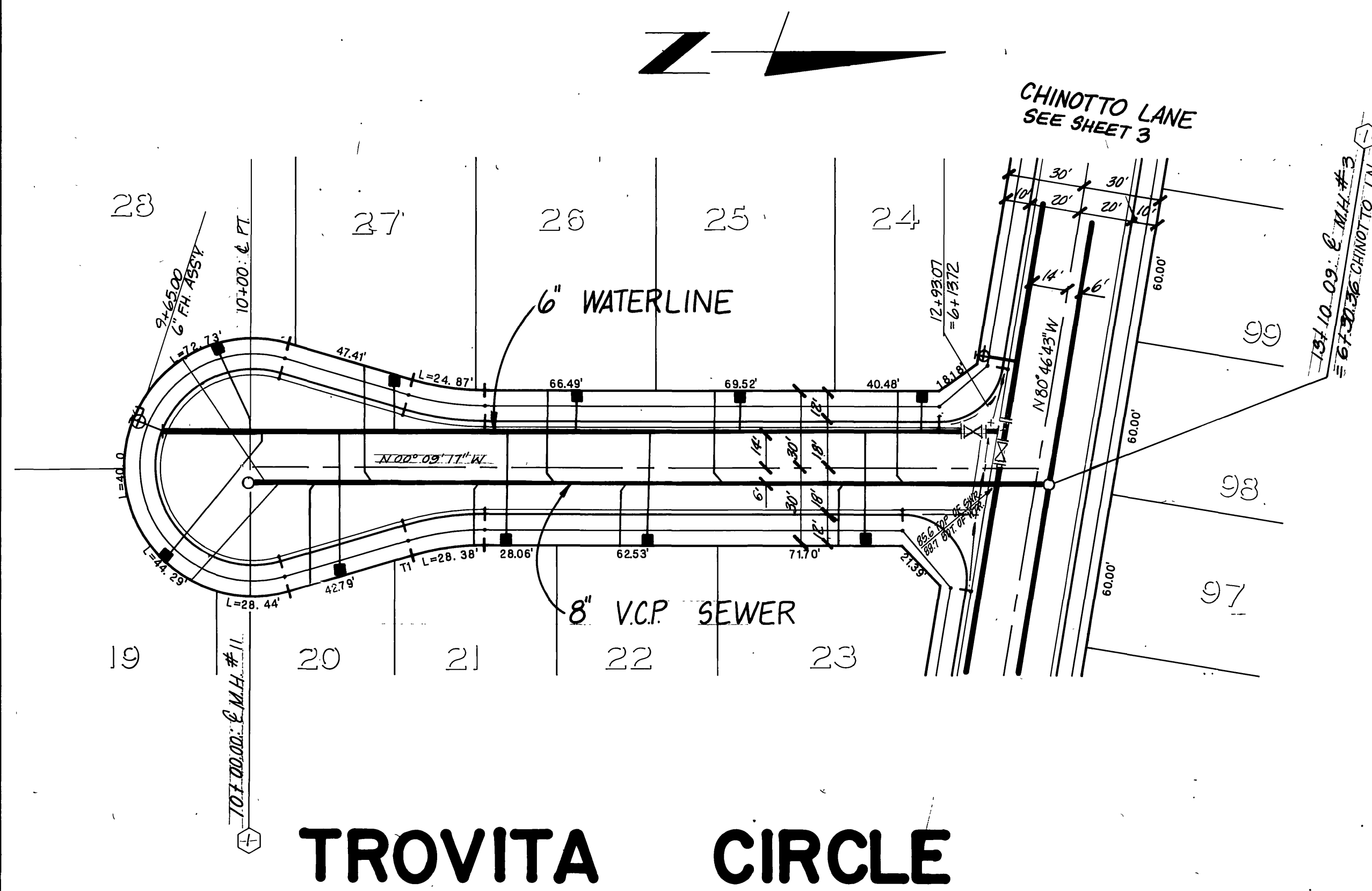
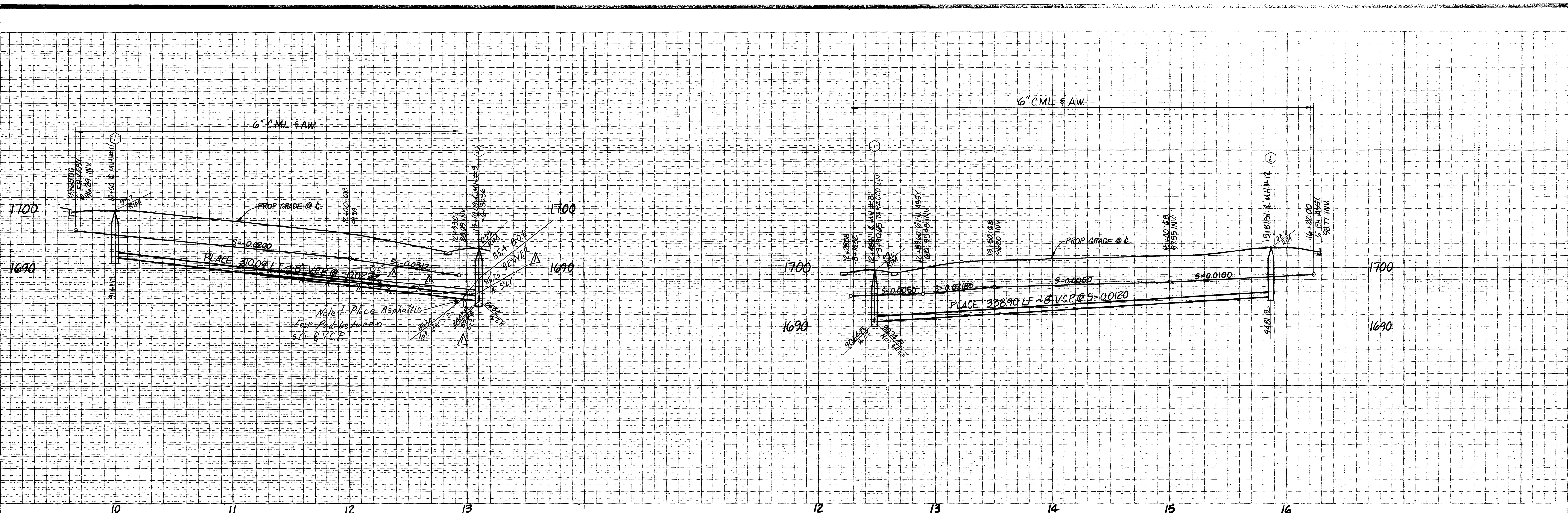
S. I. C.

INDEX/CD

6 OF 7 SHEETS

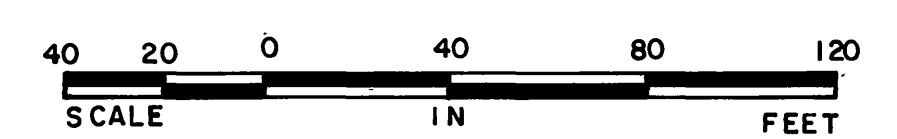
9-1391

W.O. FILE NO. 84-8390



TROVITA CIRCLE

RUBY RED COURT



CITY OF RIVERSIDE, CALIFORNIA DEPARTMENT OF PUBLIC WORKS			
APPROVED BY	BY	DATE	APPROVED BY
PRINCIPAL ENGINEER			<i>William S. Davidson</i>
PARK DEPARTMENT			DIRECTOR OF PUBLIC WORKS
TRAFFIC DIVISION			
CHIEF P.W. ENGR.			
	<i>W.S. Davidson</i>	DATE 12-4-86	

DESIGNED BY	CH	DRAWN BY	JR	CHECKED BY	CH
APPROVED BY	<i>John W. Canty</i>				
REGISTERED CIVIL ENGINEER NO.	17560	DATE	3/29/85		
REVISIONS	Δ REV'D Grade to Miss 33" S.D. (Trovita) 4/9/87 Δ REV'D Grade to Miss 33" S.D. (Trovita) 5/3/88				

J.F. DAVIDSON ASSOCIATES CIVIL ENGINEERS • SURVEYORS • PLANNERS	
P.O. BOX 493 RIVERSIDE, CA 92502 (714) 686-0841	74-075 EL PASO, #A-12 COLTON, CA 92324 (714) 825-1082
P.O. BOX 157 PALM DESERT, CA 92260 (619) 346-5091	TEMECULA, CA 92390 (714) 676-5335
SCALE HORIZ. 1" = 40'	DATE OCT 1984
VERT. 1" = 8'	
BENCH MARK: 17 B. 10-64 GRASS DISK FLUSH & MARKED V.B. 10-64, 0.6 MI E ON VAN BUREN BLVD. FROM INT. OF VAN BUREN & WOOD ROAD, 205' N. OF VAN BUREN AT THE N.E. SIDE OF GRANITE BOULDERS, ON TOP OF 3'x15'x18' BOULDER.	

IN THE COUNTY OF RIVERSIDE CALIFORNIA	
TRACT 19958-3	
SCHEDULE "A"	
SEWER TROVITA CIRCLE	PLAN & PROFILE
RUBY RED COURT	
SEC 20 & 29	T. 3 S. R. 4 W.
FOR S.I.C.	INDEX/CD
WO FB FILE NO. 84-8390	7
	OF 7 SHEETS
	9-1391