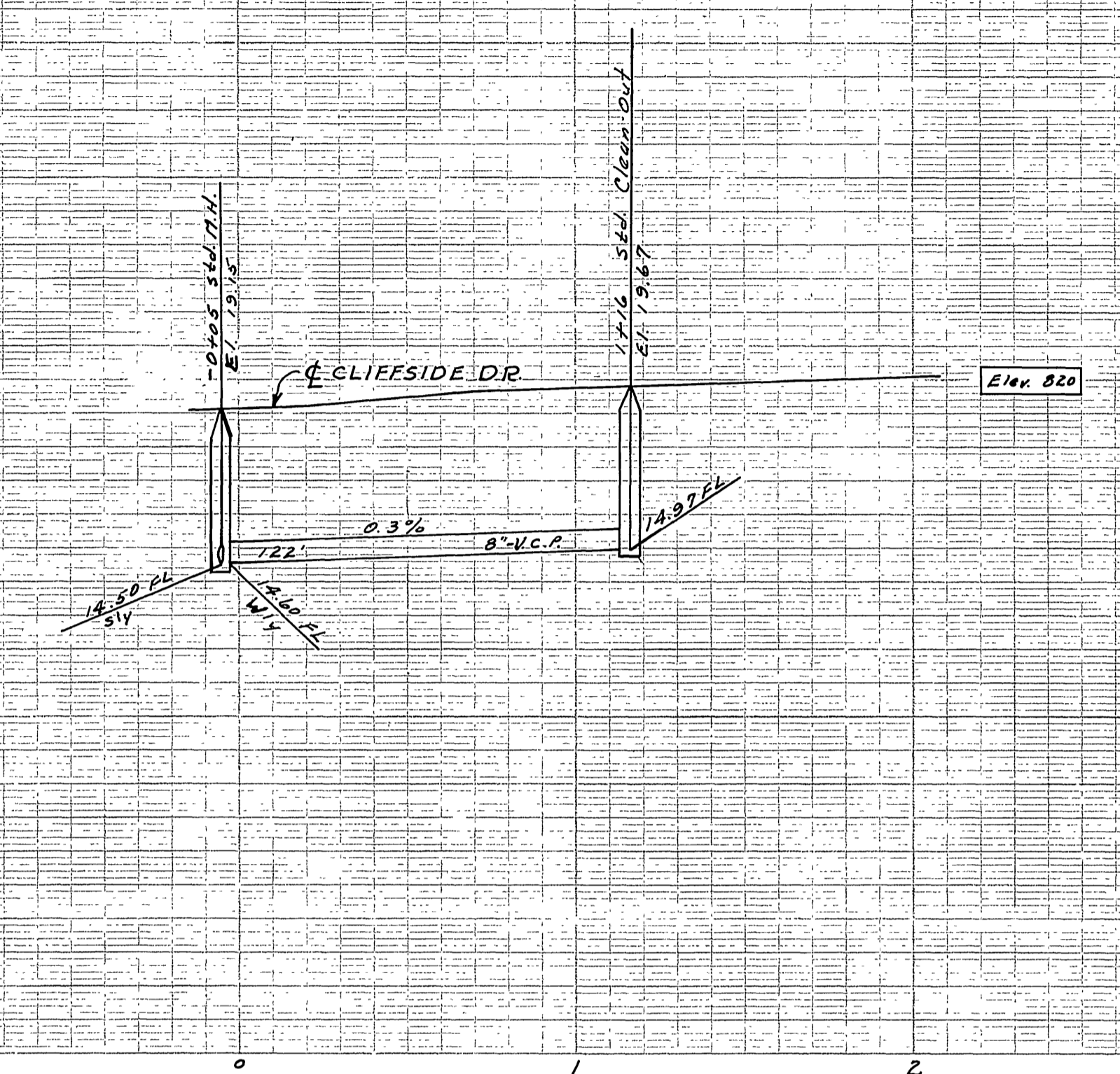
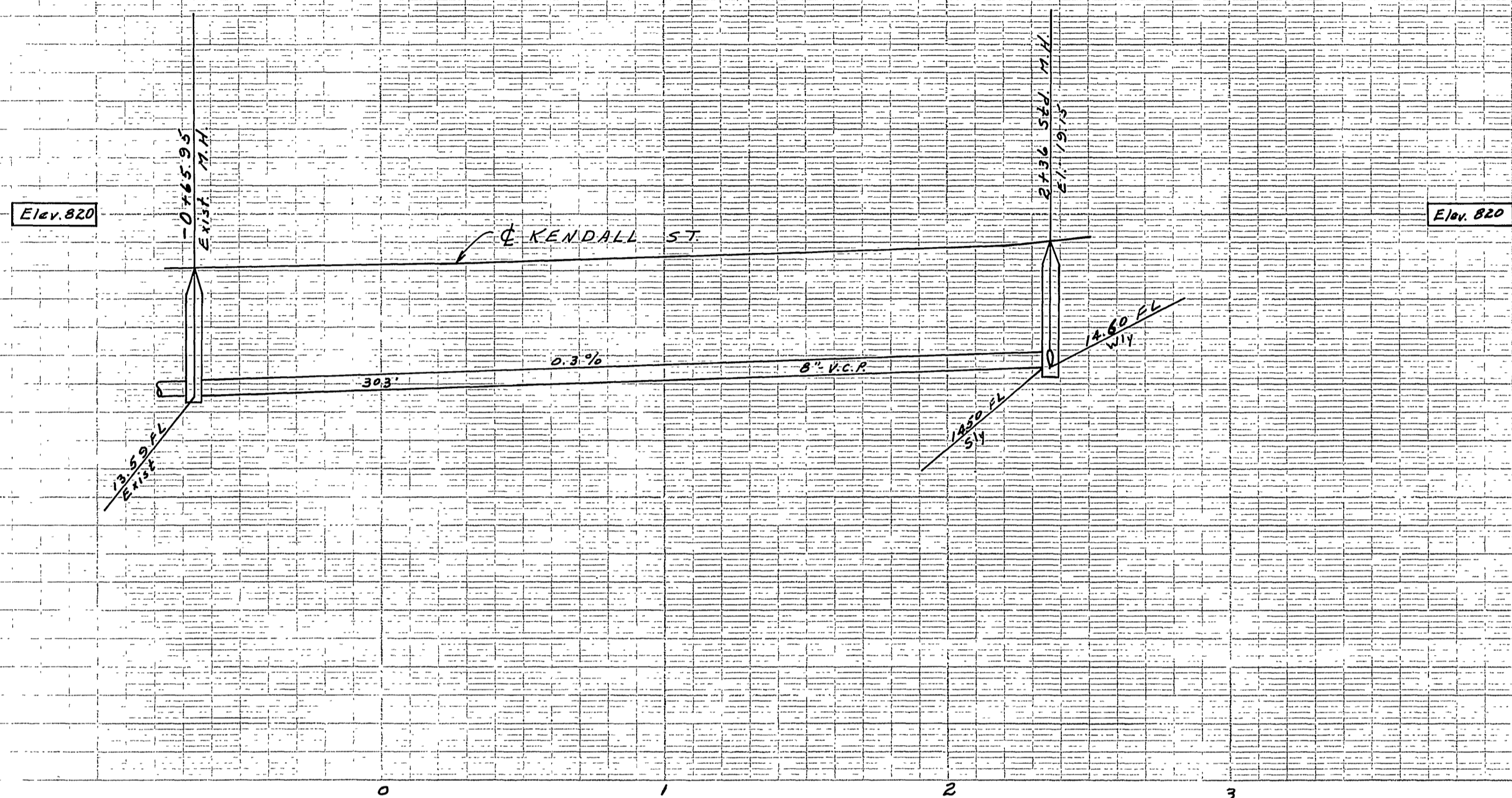
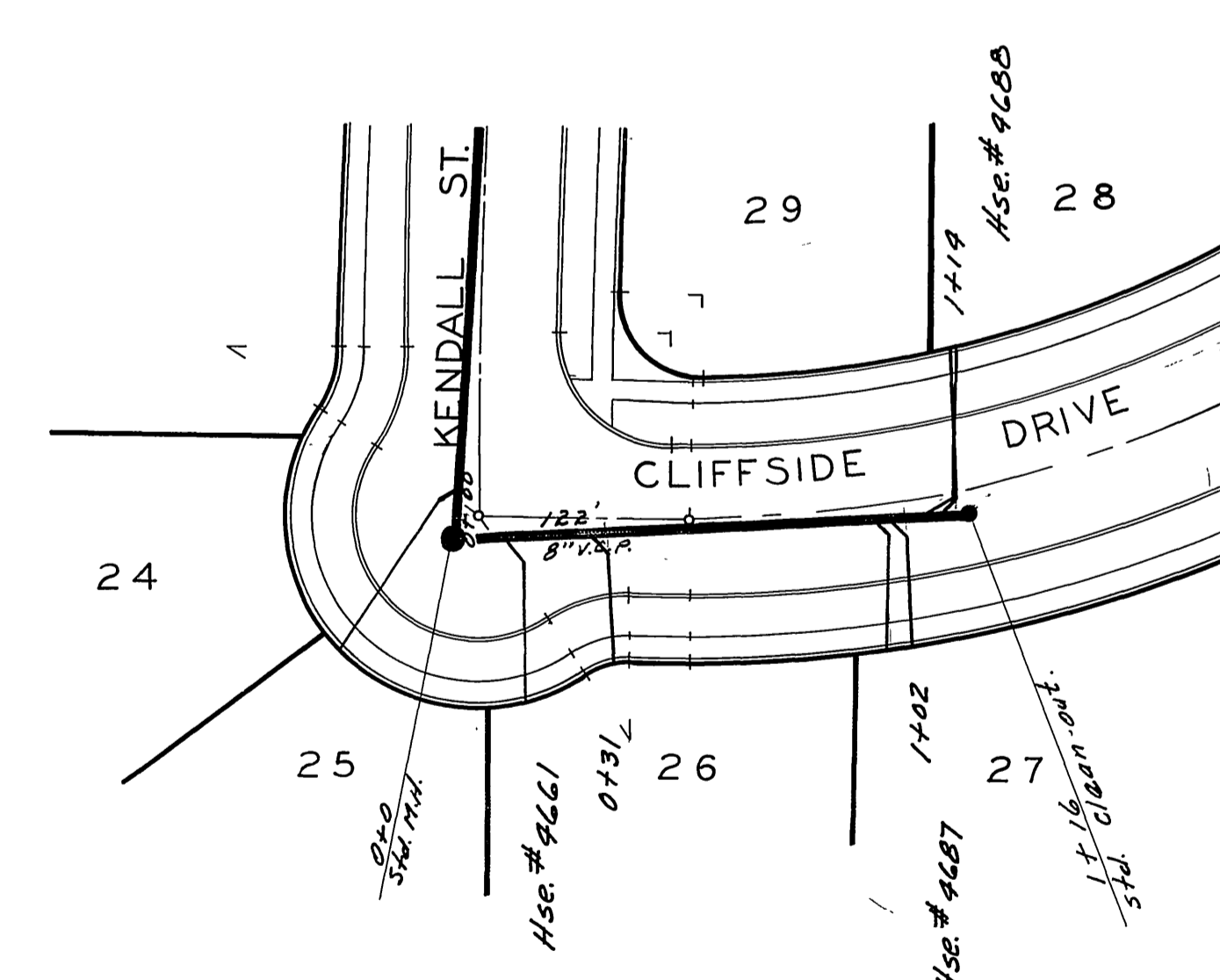
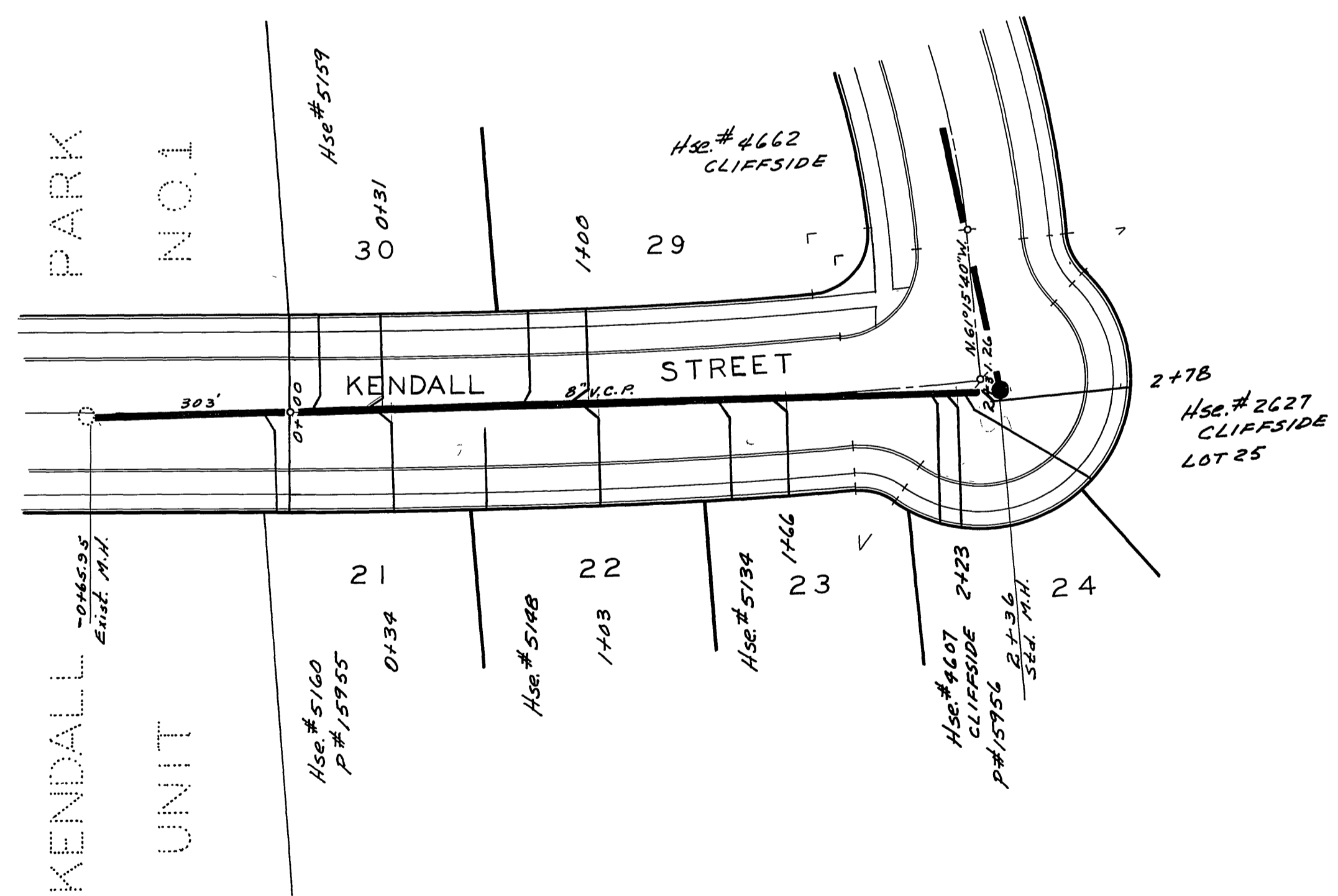


PROPERTY OF
CITY OF RIVERSIDE
DEPT. OF PUBLIC WORKS
ENGINEERING DIVISION

PROPERTY OF
CITY OF RIVERSIDE
DEPT. OF PUBLIC WORKS
ENGINEERING DIVISION



BENCH MARK - N. Rim of M.H. at corner of Palm & Elmwood Court. Elevation = 817.13



NOT A PART

PROPERTY OF
CITY OF RIVERSIDE
DEPT. OF PUBLIC WORKS
ENGINEERING DIVISION

W. DAVIDSON - CIVIL ENGINEER
RIVERSIDE, CALIFORNIA
APPROVED BY *W. Davidson* DATE 1/17-56
CITY OF RIVERSIDE, CALIFORNIA
DEPARTMENT OF PUBLIC WORKS
SEWER PLAN & PROFILE
KENDALL ST. & CLIFFSIDE DR.
KENDALL PARK NO. 2
HORIZ. SCALE 1"=40' VERT. SCALE 1"=4'
APPROVED BY *W. Martin* NO. 5-14
DATE 2-24-56

REVISED - JANUARY 1957