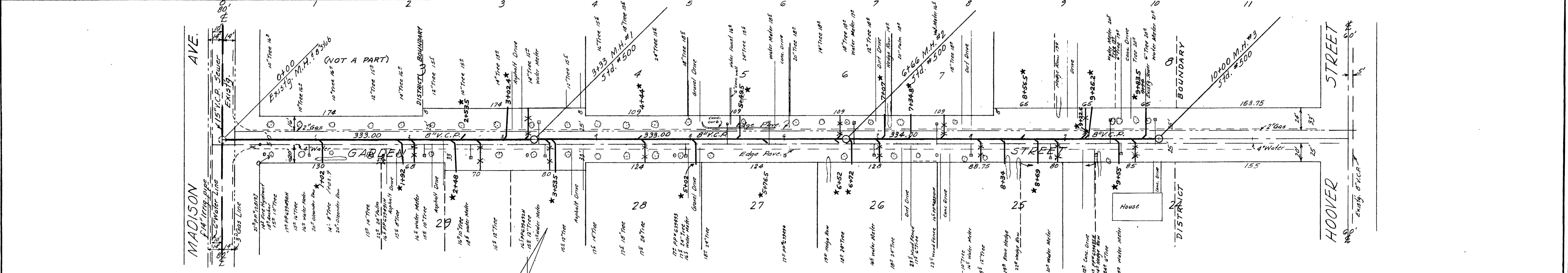


PROFILE	
DESIGNED BY	REC
CHECKED BY	REC
DATE	10/27/48



PLAN	
DESIGNED BY	REC
CHECKED BY	REC
DATE	10/27/48

**QUANTITY ESTIMATE**

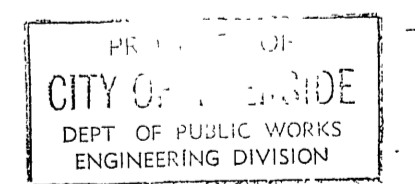
- 8" Vitrified Clay Sewer Pipe 1000 lin. ft.
- City Standard #500 Manholes 3
- House Connection Wyes - 4" 20
- 4" V.C.P. House Connections 415 lin. ft.

**GENERAL NOTES:**

Construction to be in accordance with specifications of the City of Riverside, Department of Public Works. House Connection Wyes shall be field located.

**BENCH MARK**

Nail & Tin at intersection of Hoover & Garden Sts. Elev. 849.97. F.B. 1911A/A.



REVISIONS		CITY OF RIVERSIDE CALIFORNIA DEPARTMENT OF PUBLIC WORKS	
MARK	DATE	DESCRIPTION	
*	3-4-59	As Built Sewer Laterals, H. 8011	
		<b>GARDEN STREET SANITARY SEWER DISTRICT</b>	
DESIGNED BY	REC	CHECKED BY	APPROVED BY
DRAWN BY	REC	REC	Director of Public Works
RECOMMENDED BY		ASSISTANT CITY ENGINEER	DATE 10/27/48
			S-140 SHEET 1 OF 1

