

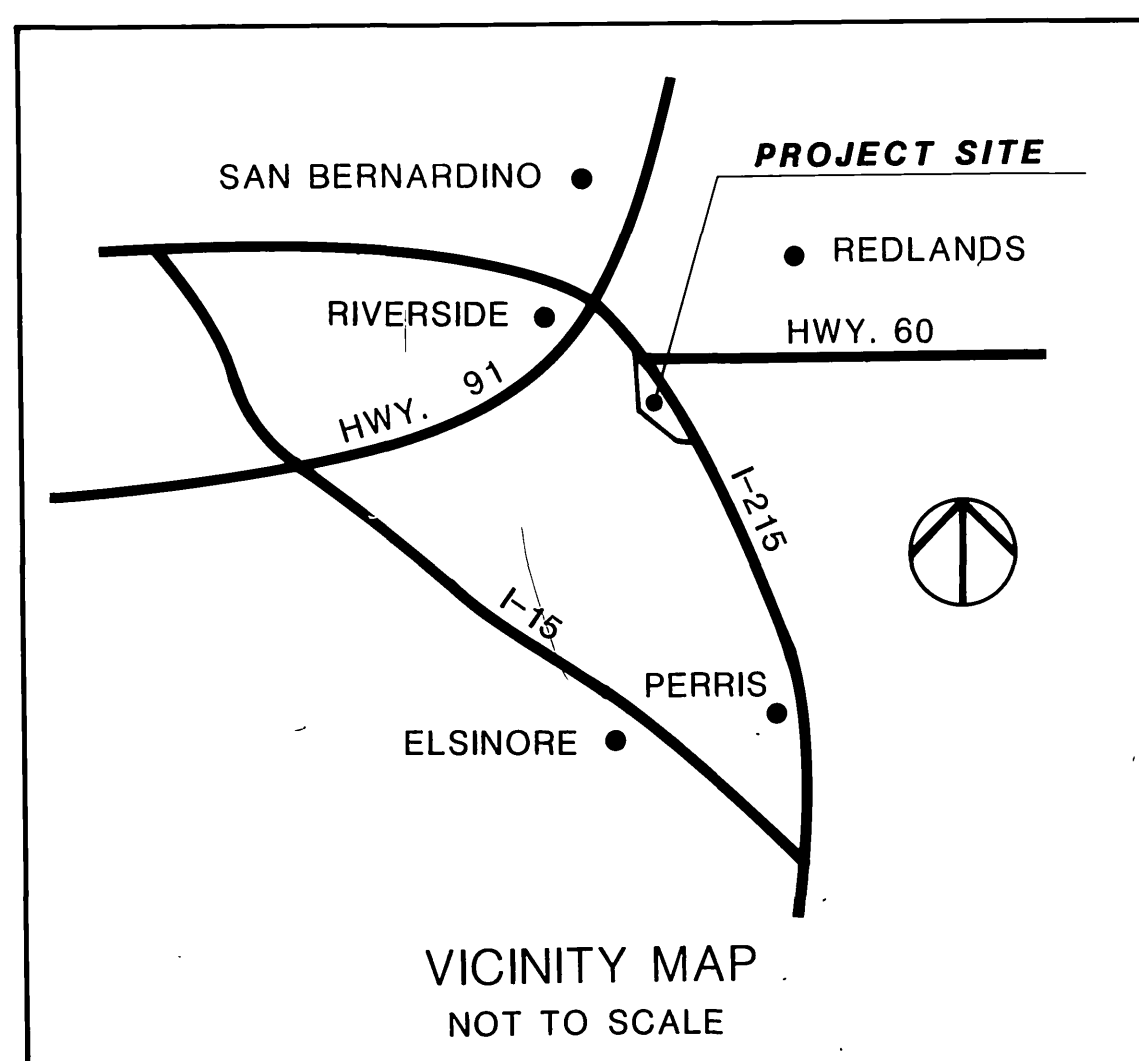
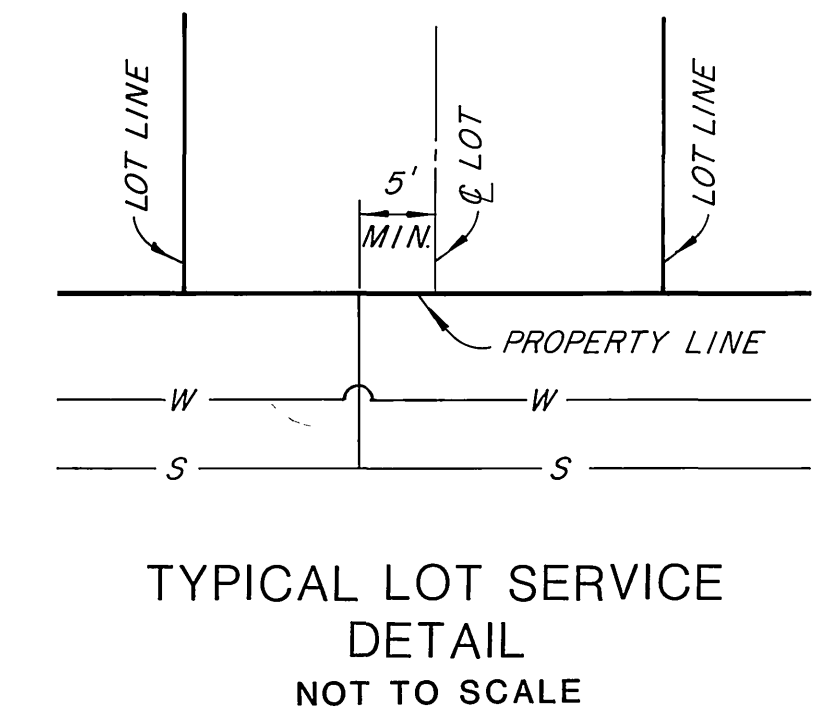
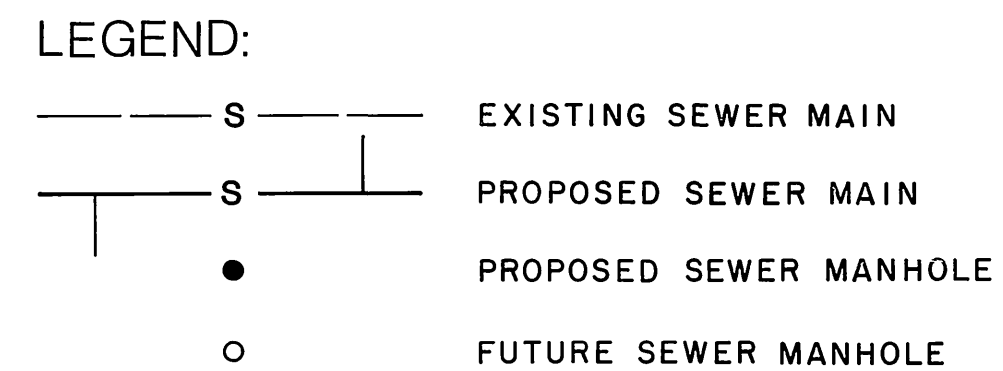
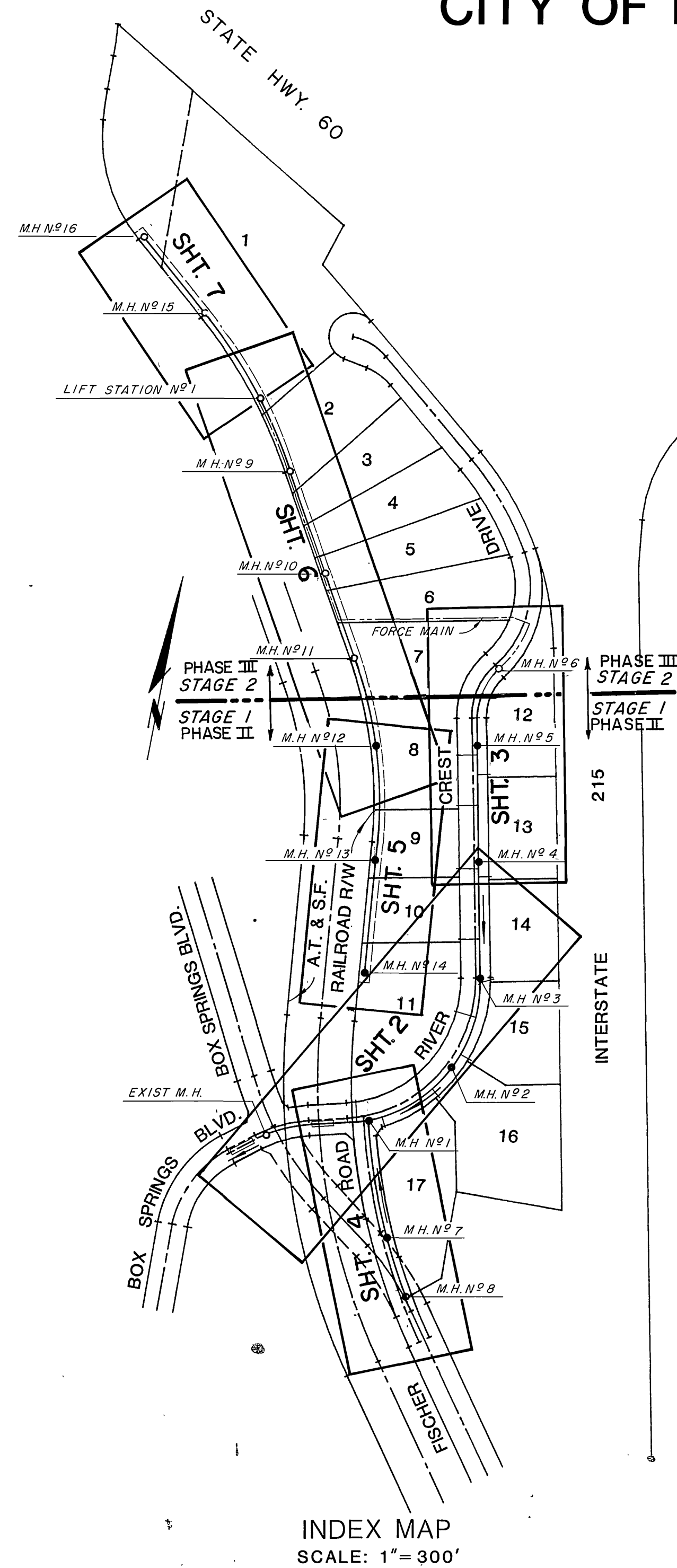
CITY OF RIVERSIDE - SEWER NOTES:

SEWER NOTES - CITY OF RIVERSIDE

- SEWER PROFILE ELEVATIONS ARE TO FLOW LINE (CONDUIT INVERT).
  - ALL STATIONS ARE SEWER CENTERLINE STATIONS.
  - A PLUG SHALL BE INSTALLED AND WILL REMAIN IN PLACE WHERE THE NEW SEWER CONNECTS WITH THE EXISTING SEWER UNTIL THE NEW SEWER IS ACCEPTED BY THE CITY.
  - PRIOR TO CONSTRUCTION OF SEWER, CONTRACTOR SHALL EXPOSE EXISTING SEWER AND VERIFY ITS EXISTING ELEVATION AND LOCATION. WHERE CONNECTING TO EXISTING MANHOLE AND INLET STUB OF PROPER SIZE EXISTS, NO ALTERATIONS SHALL BE MADE TO EXISTING MANHOLE BASE OR STUB EXCEPT AS SPECIFICALLY AUTHORIZED BY CITY OF RIVERSIDE.
  - ALL FLAGGED ELEVATIONS SHALL BE STAKED IN THE FIELD BY THE PRIVATE ENGINEER.
  - IT SHALL BE THE RESPONSIBILITY OF THE CONTRACTOR TO CLEAR THE RIGHT OF WAY IN ACCORDANCE WITH THE PROVISIONS OF LAW AS IT AFFECTS EACH UTILITY INCLUDING IRRIGATION LINES AND APPURTENANCES AND AT NO COST TO THE CITY.
  - CONSTRUCTION SHALL BE IN ACCORDANCE WITH THE CITY OF RIVERSIDE DEPARTMENT OF PUBLIC WORKS, STANDARD DRAWINGS, AND THE STANDARD SPECIFICATIONS FOR PUBLIC WORKS CONSTRUCTION, 1985 EDITION.
  - MANHOLES SHALL BE CONSTRUCTED IN ACCORDANCE WITH STD. DWG. 500.
  - THE SEWER CONTRACTOR SHALL ADJUST ALL MANHOLE COVERS TO FINAL GRADE AFTER PAVING IS COMPLETED.
  - SEWER LATERALS SHALL BE CONSTRUCTED IN ACCORDANCE WITH STD. DWG. 562. LOCATIONS OF WYES AND LATERALS, WHERE NOT SHOWN ON THE PLANS, ARE TO BE DETERMINED IN THE FIELD PRIOR TO CONSTRUCTION, TO MISS DRIVEWAYS AND PROPOSED OR EXISTING FACILITIES. ALL LATERALS ARE TO BE 4" DIAMETER UNLESS OTHERWISE SHOWN ON THE PLANS.
  - WHERE GROUNDWATER IS ENCOUNTERED, ALL V.C.P. PIPE SHALL BE TREATED FOR ABSORPTION RESISTANCE WITH A MINIMUM 3% (BY WEIGHT) SOLUTION OF DOW-CORNING 722 SILICON OR A MINIMUM 4% BY VOLUME OF POLYVINYL ACRYLIC EMULSION. APPLICATION SHALL BE BY TOTAL IMMERSION.
  - NO FINISHED FLOOR ELEVATION SHALL BE LESS THAN 4' ABOVE THE SEWER FLOW LINE AT POINT OF CONNECTION WITHOUT HAVING A PROPER BACKWATER VALVE INSTALLED IN THE LATERAL.
  - QUANTITIES SHOWN ARE FOR INFORMATION ONLY AND THE CITY OF RIVERSIDE IS NOT RESPONSIBLE FOR THEIR ACCURACY.
  - THE PRIVATE ENGINEER SIGNING THESE PLANS IS RESPONSIBLE FOR ASSURING THE ACCURACY AND ACCEPTABILITY OF THE WORK HERON. IN THE EVENT OF DISCREPANCIES ARISING DURING CONSTRUCTION, THE PRIVATE ENGINEER SHALL BE RESPONSIBLE FOR DETERMINING AN ACCEPTABLE SOLUTION AND REVISING THE PLANS FOR APPROVAL BY THE CITY.
  - THE CONTRACTOR SHALL CALL IN A LOCATION REQUEST TO UNDERGROUND SERVICE ALERT (USA), PHONE NO. 1-800-422-4133, TWO WORKING DAYS BEFORE DIGGING. NO CONSTRUCTION PERMIT WILL BE ISSUED BY THE PUBLIC WORKS DEPARTMENT INVOLVING EXCAVATION FOR UNDERGROUND FACILITIES UNLESS THE APPLICANT HAS BEEN PROVIDED AN INQUIRY IDENTIFICATION NUMBER BY U.S.A.
  - THE PRIVATE ENGINEER PREPARING THESE PLANS SHALL BE RESPONSIBLE FOR PRESERVING OR RE-ESTABLISHING AND REFERENCING SURVEY MONUMENTS DESTROYED, DISTURBED OR BURIED AS A RESULT OF CONSTRUCTION SHOWN THEREON.
- △ REVISION DELTA WITH LETTER INDICATE CHANGES AFTER BID SET ISSUANCE DATE (9-26-85)
- △ REVISION DELTA WITH NUMBER INDICATE CHANGES AFTER APPROVAL DATE ( )

CANYON SPRINGS ASSESSMENT DISTRICT  
CONSTRUCTION PHASE II

SANITARY SEWER PLANS FOR:  
PARCEL MAP NO. 19618  
STAGE 1  
CITY OF RIVERSIDE



ITEM DESCRIPTION	QUANTITY			
	UNIT	STAGE 1	STAGE 2	TOTAL
①—CONSTRUCT 8" VCP SEWER MAIN.	LF	2825.1	1606.04	4431.14
②—CONSTRUCT 6" VCP SEWER LATERAL PER CITY OF RIVERSIDE STD. DWG. NO. 562.	LF	528	220	748
③—CONSTRUCT MANHOLE PER CITY OF RIVERSIDE STD. DWG. NO. 500.	EA	10	6	16
④—CONCRETE ENCASEMENT PER C/R PUD CWD-021,022 & 023				
⑤—CONSTRUCT 6" PVC FORCE MAIN. CL 100	LF		1300	1300
⑥—CONSTRUCT LIFT STATION PER DETAIL ON SHT. 8.			1	1
⑦—CONSTRUCT JACKED OR BORED 18" STEEL CASING 5/16" WALL.	LF	40		40

NOTIFICATIONS:

CONSTRUCTION WITHIN THE BOUNDARIES OF EDMONT COMMUNITY SERVICES DISTRICT  
"CONTRACTOR SHALL NOTIFY EDMONT COMMUNITY SERVICES DISTRICT, CHUCK SANDERS, SUPT., AT (714) 653-5120 PRIOR TO STARTING CONSTRUCTION."

CONSTRUCTION AFFECTING OTHER UTILITIES.  
"CONTRACTOR SHALL NOTIFY AT LEAST 48 HOURS PRIOR TO EXCAVATION."  
SO. CALIF. GAS CO. AT ZENITH 5851  
SO. CALIF. EDISON CO. AT (714) 657-5151  
GENERAL TELEPHONE CO. AT (714) 925-2248  
EASTERN MUNICIPAL WATER DISTRICT AT (714) 925-7676 EXT. 225  
CITY OF RIVERSIDE AT (714) 787-7341  
SOUTHERN PACIFIC PIPELINES AT (213) 629-6649  
A.T. & S.F. RAILWAY; OFFICE ENGINEER AT (714) 884-2111

SEE ALSO SEWER NOTE NO. 15.

EXISTING UNDERGROUND STRUCTURES:

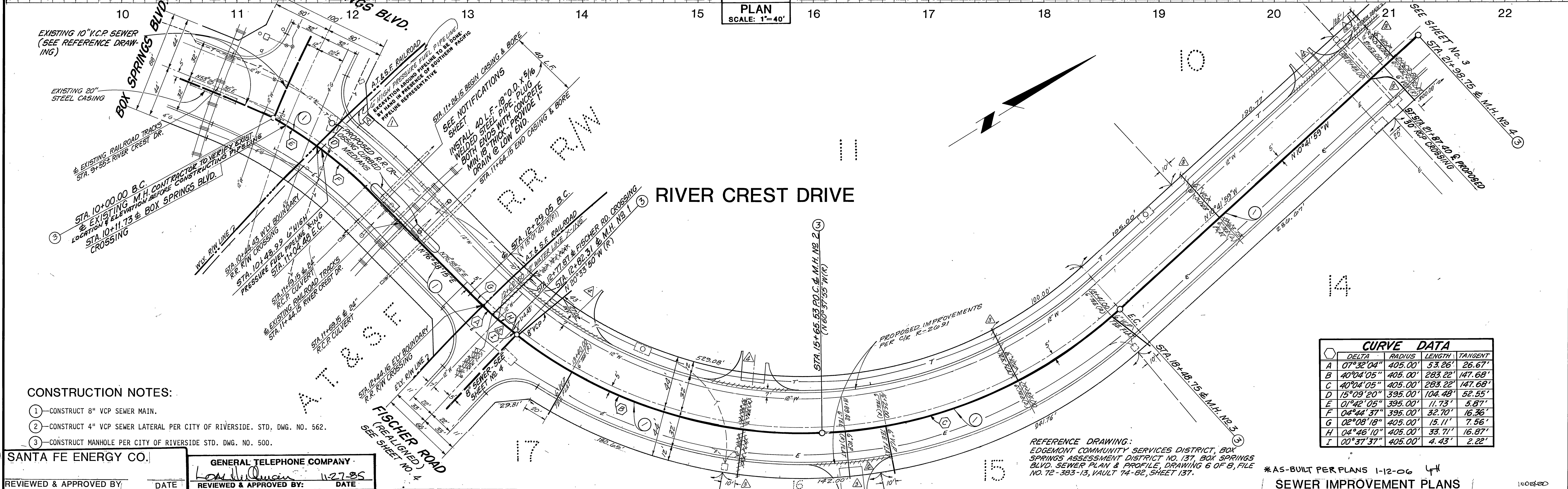
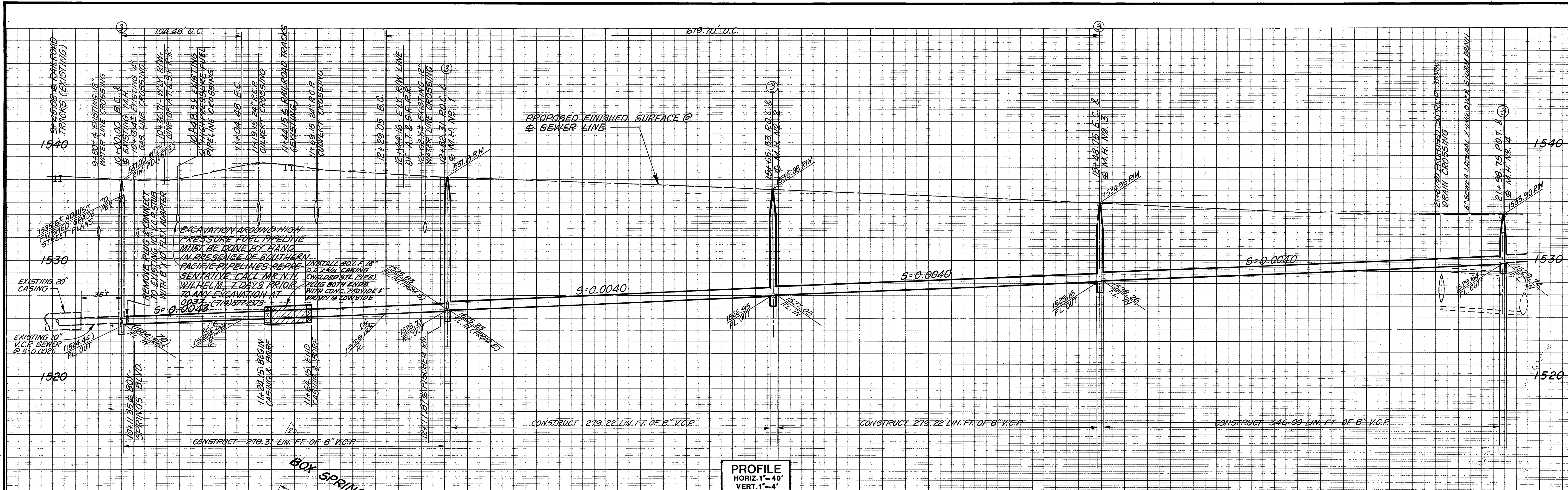
THE EXISTENCE AND LOCATION OF ANY UNDERGROUND UTILITY PIPES OR STRUCTURES OR CONDUITS SHOWN ON THESE PLANS ARE OBTAINED BY A SEARCH OF THE AVAILABLE RECORDS. TO THE BEST OF OUR KNOWLEDGE, THERE ARE NO EXISTING UTILITIES EXCEPT AS SHOWN ON THESE PLANS. THE CONTRACTOR IS REQUIRED TO TAKE DUE PRECAUTIONARY MEASURES TO PROTECT THE UTILITY LINES SHOWN AND ANY OTHER LINES NOT OF RECORD OR NOT SHOWN ON THESE PLANS. IT SHALL BE THE CONTRACTOR'S RESPONSIBILITY TO NOTIFY THE OWNERS OF THE UTILITIES OR STRUCTURES CONCERNED BEFORE STARTING WORK. CONTRACTOR FURTHER ASSUMES ALL LIABILITY AND RESPONSIBILITY FOR THE UNDERGROUND UTILITY PIPES, CONDUITS OR STRUCTURES SHOWN OR NOT SHOWN ON THESE PLANS.

NOTICE TO CONTRACTOR:

CONTRACTOR SHALL VERIFY ALL CONDITIONS AND DIMENSIONS AND SHALL REPORT ALL DISCREPANCIES TO THE ENGINEER PRIOR TO THE COMMENCEMENT OF WORK.

EASTERN MUNICIPAL WATER DISTRICT  REVIEWED BY: <i>Joe Van Nibbe</i> DATE: 11/27/85	BENCH MARK: RIV. CO: B.M. BRASS DISC MARKED M-64-69 IN THE CENTER OF A 8" X 16" HDNL @ THE S.W. CORNER OF HWY. 60 & DAY ST. 53" WEST OF DAY ST. & 23" S.E. OF N.E. CORNER OF A C.S.D.H. R/W FENCE. ELEVATION = 1612.241	<b>Greiner</b> Greiner Engineering of California 5225 Canyon Crest Drive Bldg. 200, Suite 253 Riverside, California 92507 (714) 351-8328 (714) 788-7746 A Greiner Engineering, Inc. Company	PLANS PREPARED UNDER THE DIRECTION OF: <i>Donna J. Gannon</i> R.C.E. NO. 30539 DATE 9/25/85	DESIGNED BY <i>W.E.R.</i> DRAWN BY <i>W.W.</i> CHECKED BY <i>B.L.V.</i>	CITY OF RIVERSIDE, CALIFORNIA PUBLIC WORKS DEPARTMENT APPROVED BY: <i>William S. Anderson</i> DIRECTOR OF PUBLIC WORKS DATE: 2-5-86	CANYON SPRINGS ASSESSMENT DISTRICT CONSTRUCTION PHASE II SANITARY SEWER PLANS FOR: PARCEL MAP NO. 19618 STAGE 1 TITLE SHEET	ACCOUNT NO. DRAWING NUMBER S-1410 SHEET 1-OF 8
	*AS-BUILT PER PLANS 1-12-06 LFH			INDEXED		SCALE:	





CURVE DATA			
DELTA	RADIUS	LENGTH	TANGENT
A 07°32'04"	405.00'	53.26'	26.67'
B 40°04'05"	405.00'	263.22'	147.68'
C 40°04'05"	405.00'	263.22'	147.68'
D 15°09'20"	395.00'	104.48'	52.55'
E 01°42'05"	395.00'	11.73'	5.87'
F 04°44'37"	395.00'	32.70'	16.36'
G 02°08'18"	405.00'	15.11'	7.56'
H 04°46'10"	405.00'	33.71'	16.87'
I 00°37'37"	405.00'	4.43'	2.22'

SANTA FE ENERGY CO.  
REVIEWED & APPROVED BY: *E.R. Rubin* DATE: 10-25-85

SOUTHERN CALIF. GAS CO.  
REVIEWED & APPROVED BY: *E.R. Rubin* DATE: 10-25-85

SOUTHERN PACIFIC PIPELINES CO.  
REVIEWED & APPROVED BY: DATE:

GENERAL TELEPHONE COMPANY  
RIV. CO: B.M.  
REVIEWED & APPROVED BY: *Lois M. Quinn* DATE: 11-27-85

BRASS DISC MARKED M-64-69 IN THE CENTER OF A 8" x 16" HDWL @ THE S.W. CORNER OF HWY. 60 & DAY ST. 53" WEST OF DAY ST. & 23" S.E. OF N.E. CORNER OF A.C.S.D.H. R/W BOUNDARY. ELEVATION = 1612.241

EASTERN MUNICIPAL WATER DISTRICT  
RIV. CO: B.M.  
REVIEWED BY: *Joe Van Liable* DATE: 11/27/85

Greiner Engineering of California  
5225 Canyon Crest Drive  
Bldg. 200, Suite 253  
Riverside, California 92507  
(714) 351-8328  
(714) 788-7746  
A Greiner Engineering, Inc. Company

PLANS PREPARED UNDER THE DIRECTION OF:  
*Edward J. Greiner* R.C.E. NO. 30534 DATE: 2/23/85

ADDED DRIVEWAY ENTRANCES  
MODIFIED SEWER LATERAL LOCATION  
REVISED SEWER GRADE & ELEVATIONS  
ADDED S.P. PAC PIPELINES NOTIFICATION

MARK REVISIONS APPR. DATE

DESIGNED BY: W.E.P. DRAWN BY: W.M.F. CHECKED BY: H.A. PREP

CITY OF RIVERSIDE, CALIFORNIA  
PUBLIC WORKS DEPARTMENT

APPROVED BY: *William D. Anderson* DATE: 2-5-86  
PRINCIPAL ENGINEER  
PARK DEPARTMENT  
TRAFFIC DIVISION  
CHIEF PUB. WORKS ENGR.

CANYON SPRINGS ASSESSMENT DISTRICT  
PARCEL MAP NO. 19618  
CONSTRUCTION PHASE II, STAGE I  
RIVER CREST DRIVE  
STA. 10+00.00 TO STA. 21+98.75

ACCOUNT NO. DRAWING NUMBER S-1410 SHEET 2 OF 8

SCALE: HORIZ. 1" = 40', VERT. 1" = 4'



1540

1530

1520

1530

1520

19

20

21

22

23

24

25

26

27

28

29

30

31

32

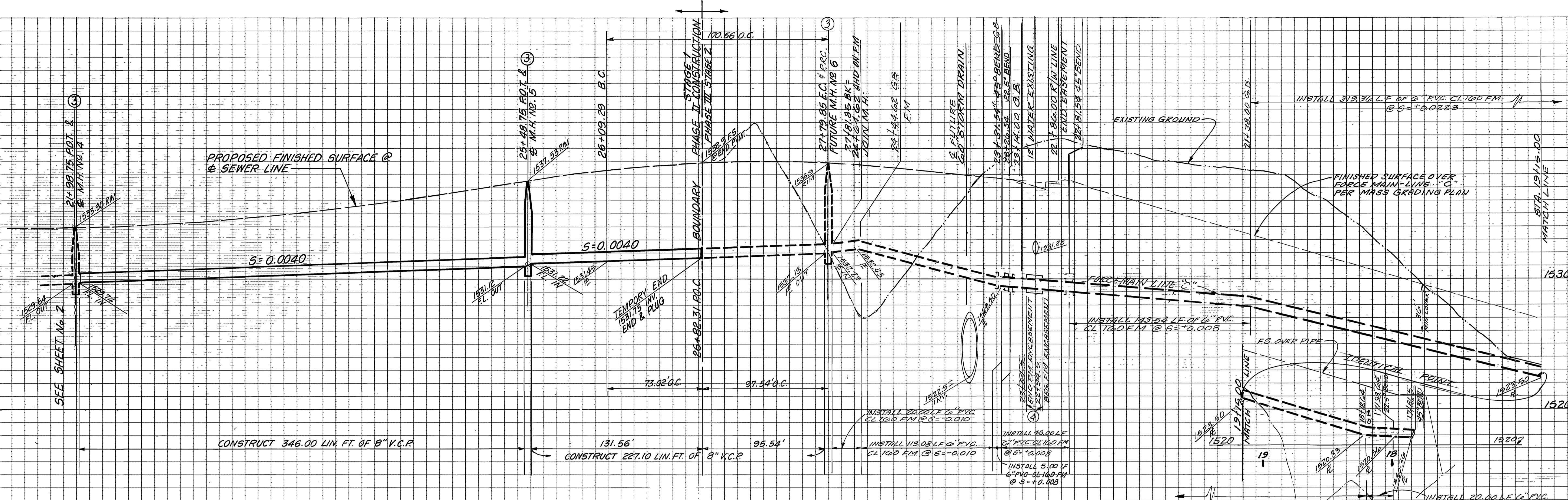
33

34

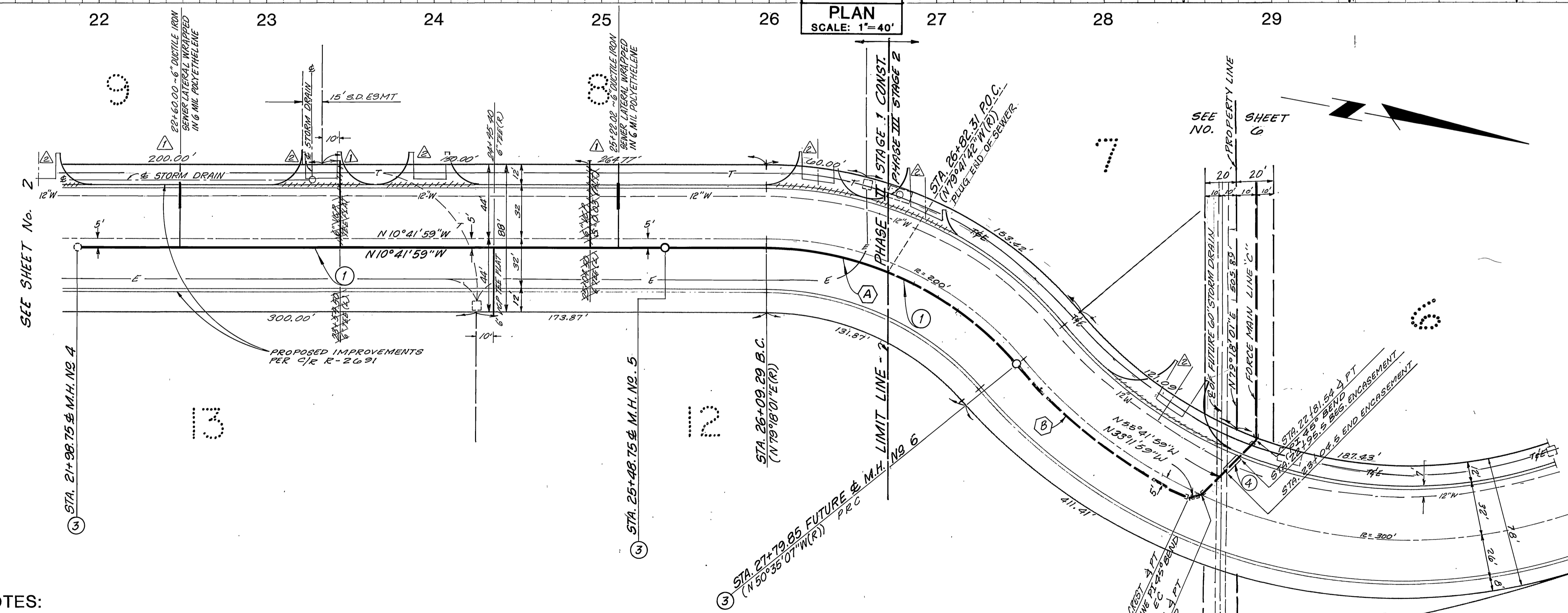
35

36

37



**PROFILE**  
 HORIZ. 1"=40'  
 VERT. 1"=4'  
**PLAN**  
 SCALE: 1"=40'



CURVE DATA			
DELTA	RADIUS	LENGTH	TANGENT
A 50° 06' 52"	155.00'	170.56'	91.17'
B 25° 00' 00"	305.00'	133.09'	60.32'

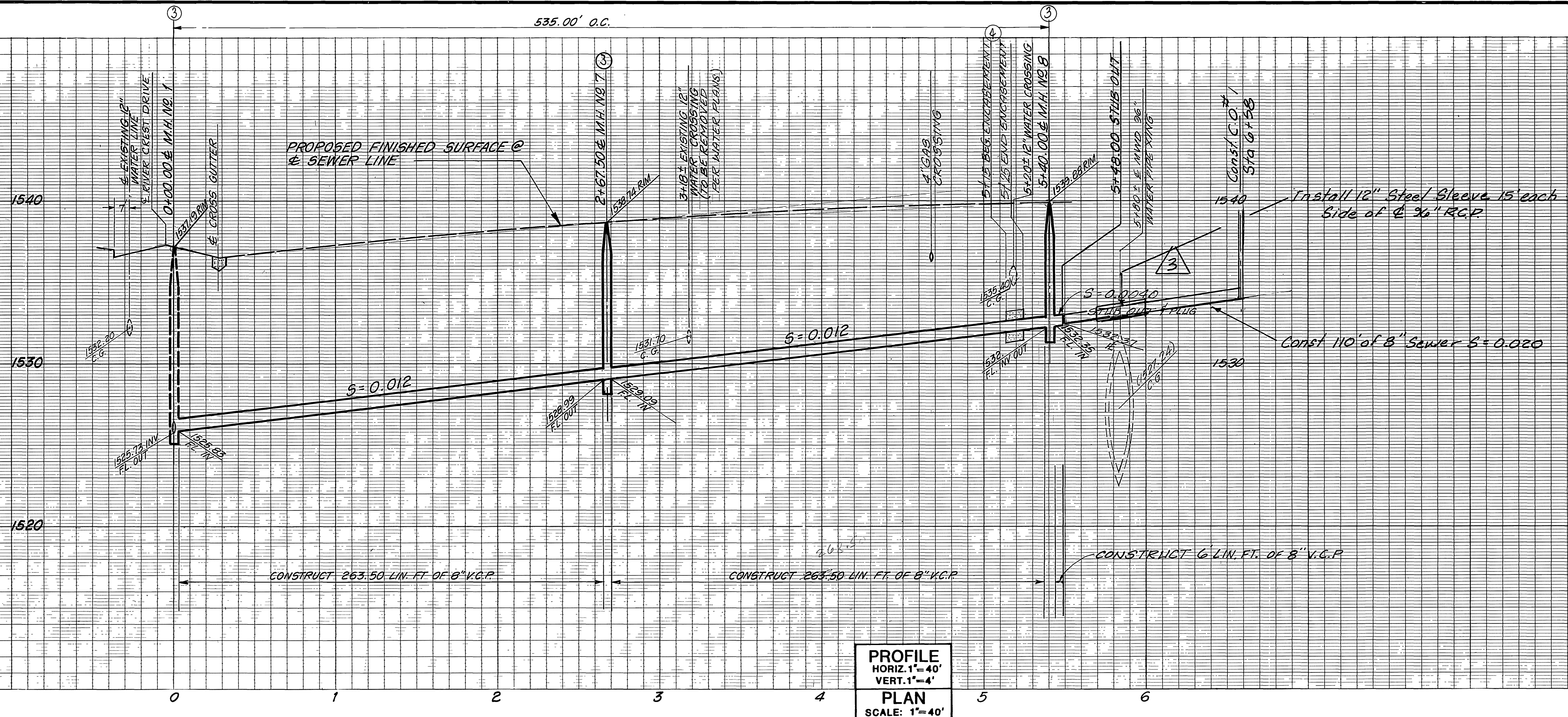
**CONSTRUCTION NOTES:**

- ① CONSTRUCT 8" VCP SEWER MAIN.
- ② CONSTRUCT 4" VCP SEWER LATERAL PER CITY OF RIVERSIDE STD. DWG. NO. 562.
- ③ CONSTRUCT MANHOLE PER CITY OF RIVERSIDE STD. DWG. NO. 500.
- ④ CONCRETE ENCASUREMENT

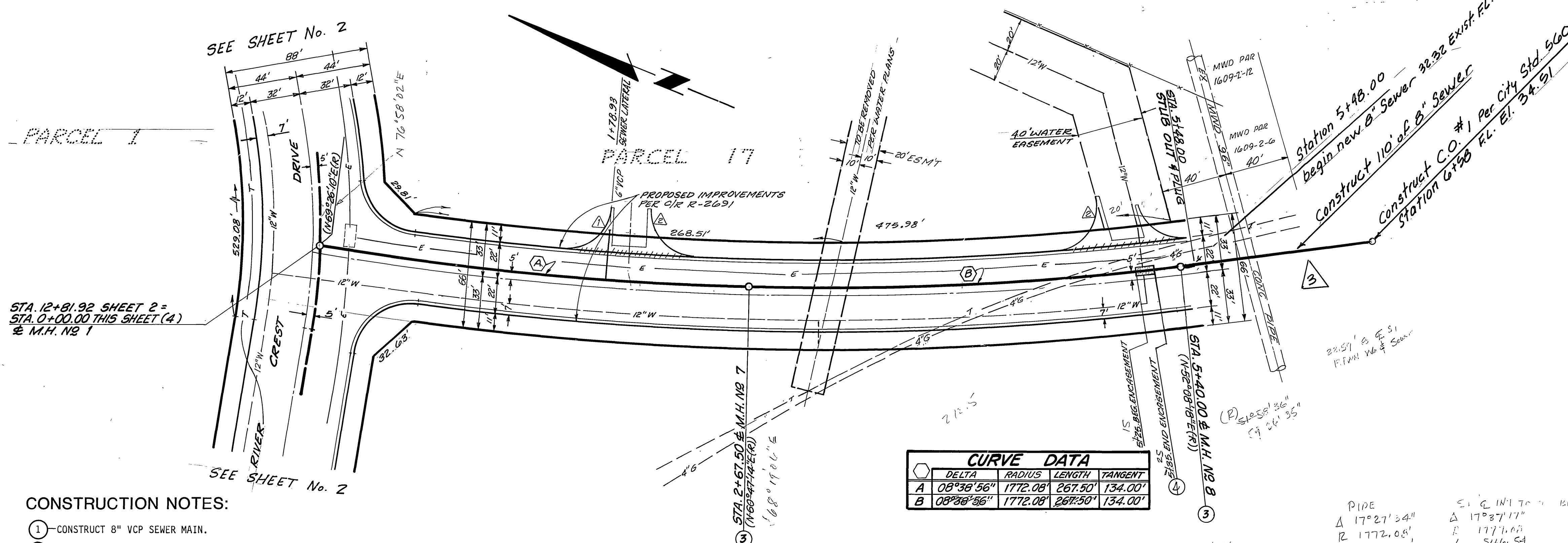
**RIVER CREST DRIVE**

EASTERN MUNICIPAL WATER DISTRICT Joe Van Kille REVIEWED BY:	Greiner Ureiner Engineering of California 5225 Canyon Crest Drive Bldg. 200, Suite 253 Riverside, California 92507 (714) 351-8328 (714) 788-7748 A Greiner Engineering, Inc. Company	PLANS PREPARED UNDER THE DIRECTION OF: R.C.E. NO. 30534 DATE 2/23/85 DESIGNED BY W.E.D. DRAWN BY G.H. CHECKED BY B.L.	CITY OF RIVERSIDE, CALIFORNIA PUBLIC WORKS DEPARTMENT APPROVED BY: [Signature] PRINCIPAL ENGINEER PARK DEPARTMENT TRAFFIC DIVISION CHIEF PUB WKS ENGR.	CANYON SPRINGS ASSESSMENT DISTRICT PARCEL MAP NO. 19618 CONSTRUCTION PHASE II, STAGE I RIVER CREST DRIVE STA. 21+98.75 TO STA. 26+82.31 SCALE: HORIZ. 1"=40', VERT. 1"=4'	ACCOUNT NO. DRAWING NUMBER S - 1410 SHEET 3 OF 8 J.N. 6651504
			DATE 2.5.86	*AS-BUILT PER PLAN I-12-06 LTH	BENCH MARK: RIV. CO: B.M. BRASS DISC MARKED M-64-69 IN THE CENTER OF A 8" x 16" HDWL @ THE S.W. CORNER OF HWY. 60 & DAY ST. 53' WEST OF DAY ST. & 23' S.E. OF N.E. CORNER OF A C.S.D.H. R/W FENCE. ELEVATION = 1612.241



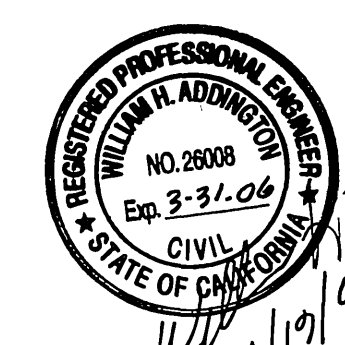


PROFILE  
HORIZ. 1"=40'  
VERT. 1"=4'  
PLAN  
SCALE: 1"=40'



CURVE DATA			
DELTA	RADIUS	LENGTH	TANGENT
A 08°38'56"	1772.08'	267.50'	134.00'
B 08°38'56"	1772.08'	267.50'	134.00'

- CONSTRUCTION NOTES:**
- 1 - CONSTRUCT 8" VCP SEWER MAIN.
  - 2 - CONSTRUCT 4" VCP SEWER LATERAL PER CITY OF RIVERSIDE. STD. DWG. NO. 562.
  - 3 - CONSTRUCT MANHOLE PER CITY OF RIVERSIDE STD. DWG. NO. 500.
  - 4 - CONCRETE ENCASUREMENT



Revisions Noted by [3]  
were prepared under the direction of  
William H. Addington RCE 26008  
12055 Westwood Lane, Grand Terrace Ca.  
Tel. 909-825-6692

BENCH MARK: RIV. CO: B.M.  
BRASS DISC MARKED M-64-69 IN THE  
CENTER OF A 8" x 16" HDWL @ THE  
S.W. CORNER OF HWY. 60 & DAY ST.  
53' WEST OF DAY ST. & 23' S.E. OF  
N.E. CORNER OF A C.S.D.H. R/W FENCE.  
ELEVATION = 1612.241

SOUTHERN CALIFORNIA GAS  
E.P. [Signature]  
REVIEWED & APPROVED BY  
DATE 10-25-85

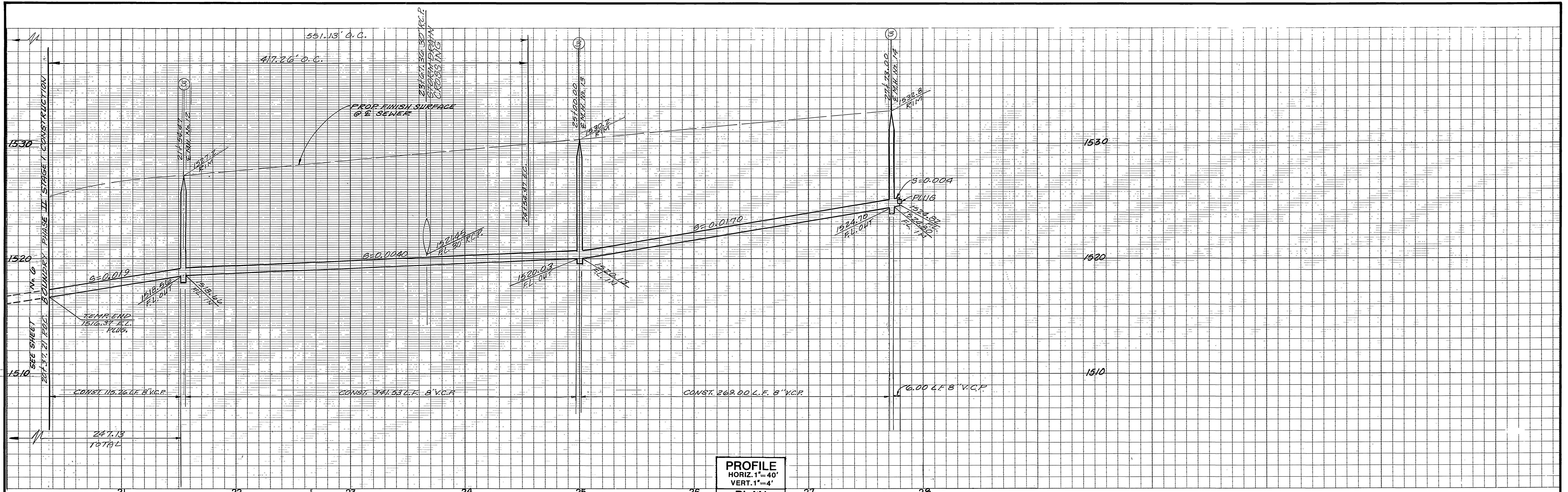
EASTERN MUNICIPAL WATER DISTRICT  
Joe Van [Signature]  
REVIEWED BY:  
DATE 11/27/85

Greiner  
Greiner Engineering of California  
9225 Canyon Crest Drive  
Bldg. 200, Suite 253  
Riverside, California 92507  
(714) 351-8326  
(714) 788-7746  
A Greiner Engineering, Inc. Company  
PLANS PREPARED UNDER THE DIRECTION OF:  
R.G.E. NO. 30234 DATE 2/22/85

CITY OF RIVERSIDE, CALIFORNIA  
PUBLIC WORKS DEPARTMENT  
APPROVED BY [Signature] DATE 12/13/85  
PRINCIPAL ENGINEER  
TRAFFIC DIVISION  
CHIEF PUB WKS ENGR  
DESIGNED BY H.A. DRAWN BY G.H. CHECKED BY [Signature]

SEWER IMPROVEMENT PLANS  
CANYON SPRING ASSESSMENT DISTRICT  
PARCEL MAP NO. 19618  
CONSTRUCTION PHASE II, STAGE I  
FISCHER ROAD  
STA. 0+00.00 TO STA. 5+48.00  
ACCOUNT NO.  
DRAWING NUMBER  
S - 1410  
SHEET 4 OF 8  
SCALE: HORIZ. 1"=40', VERT. 1"=4'

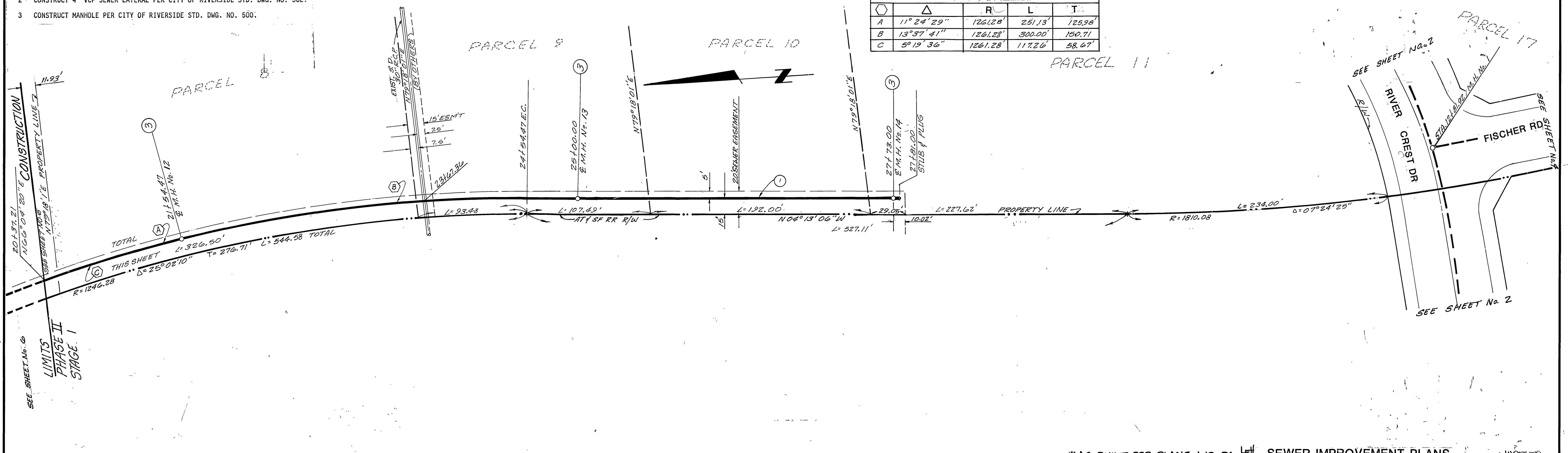




**PROFILE**  
 HORIZ. 1"=40'  
 VERT. 1"=4'  
**PLAN**  
 SCALE: 1"=40'

CURVE DATA				
Station	Angle	R	L	T
A	11° 24' 29"	1261.28'	251.13'	125.98'
B	13° 37' 41"	1261.28'	300.00'	150.71'
C	5° 19' 36"	1261.28'	117.26'	58.67'

1. CONSTRUCT 8" VCP SEWER MAIN.
2. CONSTRUCT 4" VCP SEWER LATERAL PER CITY OF RIVERSIDE STD. DWG. NO. 562.
3. CONSTRUCT MANHOLE PER CITY OF RIVERSIDE STD. DWG. NO. 500.



**BENCHMARK:** RIV. CO: B.M.  
 BRASS DISC MARKED M-64-69 IN THE CENTER OF A 8" x 16' HDWL @ THE S.W. CORNER OF HWY. 60 & DAY ST. 53' WEST OF DAY ST. & 23' S.E. OF N.E. CORNER OF A C.S.D.H. R/W FENCE. ELEVATION = 1612.241

**EASTERN MUNICIPAL WATER DISTRICT**  
 REVIEWED BY: *Joe Van Nille* DATE: *11/27/85*

**Greiner**  
 An International Professional Services Organization  
 PLANS PREPARED UNDER THE DIRECTION OF:  
*David L. Jones* R.C.E. NO. 30834 DATE *2/25/85*

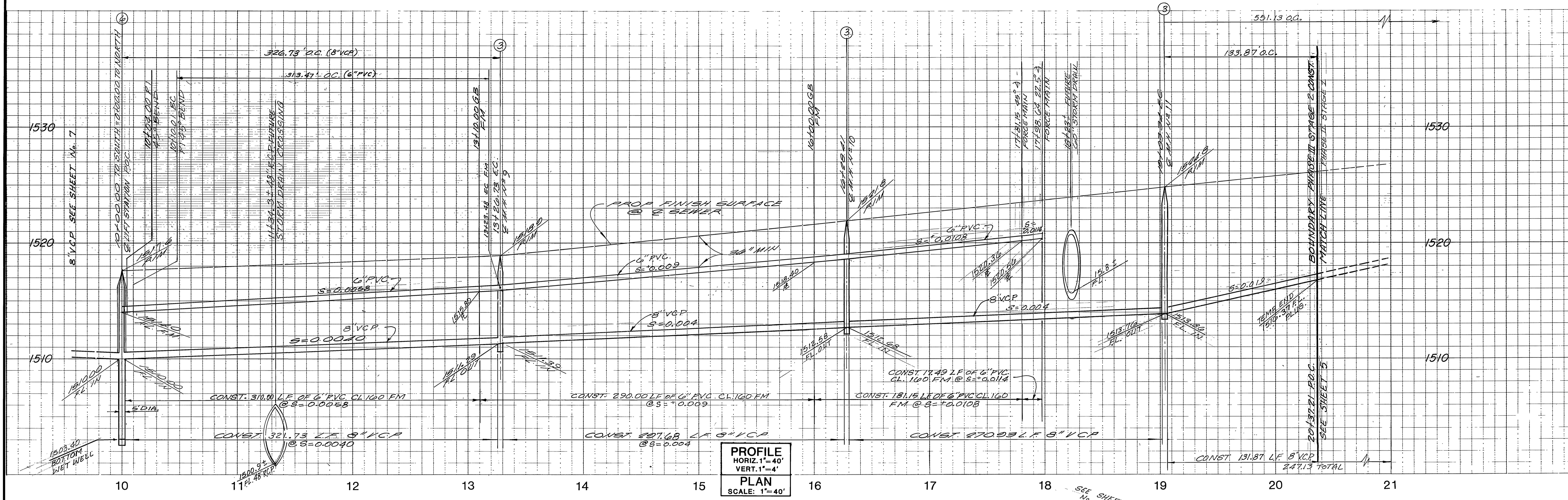
DESIGNED BY W.E.D. DRAWN BY G.H. CHECKED BY H.A.  
 MARK REVISIONS APPR. DATE

\*AS-BUILT PER PLANS 1-12-06 LHM  
**CITY OF RIVERSIDE, CALIFORNIA**  
**PUBLIC WORKS DEPARTMENT**  
 APPROVED BY: *William D. ...* BY DATE: *1/16/86*  
 TRAFFIC DIVISION CHIEF PUB WKS. ENGR. DATE: *2.5.86*

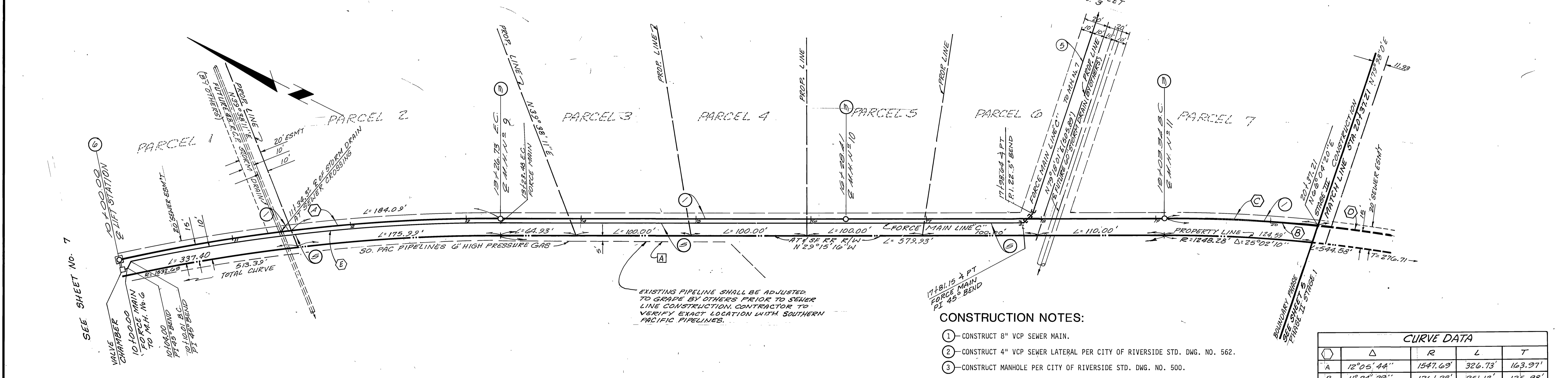
**SEWER IMPROVEMENT PLANS**  
 CANYON SPRINGS ASSESSMENT DISTRICT  
 PARCEL MAP NO. 19618  
 CONSTRUCTION PHASE II, STAGE I  
 EASEMENT IN BACK OF PARCELS 8-10  
 STA. 20+37.21 TO STA. 27+81.00  
 SCALE: HORIZ. 1"=40', VERT. 1"=4'

ACCOUNT NO. *IN DELETED*  
 DRAWING NUMBER **S-1410**  
 SHEET **5** OF **8**  
 J.N. 6651504





PROFILE  
HORIZ. 1"=40'  
VERT. 1"=4'  
PLAN  
SCALE: 1"=40'



**CONSTRUCTION NOTES:**

- ① - CONSTRUCT 8" VCP SEWER MAIN.
- ② - CONSTRUCT 4" VCP SEWER LATERAL PER CITY OF RIVERSIDE STD. DWG. NO. 562.
- ③ - CONSTRUCT MANHOLE PER CITY OF RIVERSIDE STD. DWG. NO. 500.
- ⑤ - CONSTRUCT ⑥ PVC CL. 160 FORCE MAIN.
- ⑥ - CONSTRUCT LIFT STATION PER DETAIL ON SHT. 8

CURVE DATA				
Δ	R	L	T	
A 12° 05' 44"	1547.69'	326.73'	163.91'	
B 11° 24' 29"	1261.28'	251.13'	125.98'	
C 8° 04' 53"	1261.28'	153.87'	67.00'	
D 5° 19' 36"	1261.28'	117.26'	58.67'	
E 11° 38' 32"	1542.69'	313.47'	157.28'	

**VERIFICATION OF LOCATION ONLY**

AS OF DATE: \_\_\_\_\_

SO. PACIFIC PIPELINE DATE: \_\_\_\_\_

SANTA FE ENERGY CO DATE: \_\_\_\_\_

**BENCHMARK:** RIV. CO: B.M.  
BRASS DISC MARKED M-64-69 IN THE CENTER OF A 8" x 16" HDWL @ THE S.W. CORNER OF HWY. 60 & DAY ST. 53' WEST OF DAY ST. & 23' S.E. OF N.E. CORNER OF A C.S.D.H. R/W FENCE. ELEVATION = 1612.241

**EASTERN MUNICIPAL WATER DISTRICT**

*Joe Van Kille* 11/27/85  
REVIEWED BY: DATE:

**Greiner**

Greiner Engineering of California  
5225 Canyon Crest Drive  
Bldg. 200, Suite 253  
Riverside, California 92507  
(714) 351-8328  
(714) 788-7748  
A Greiner Engineering, Inc. Company

PLANS PREPARED UNDER THE DIRECTION OF:  
*Barbara D. Lynn* R.C.E. NO. 30234 DATE 2/29/82

\*AS-BUILT PER PLANS 1-12-06 4H

**CITY OF RIVERSIDE, CALIFORNIA  
PUBLIC WORKS DEPARTMENT**

APPROVED BY: *W. J. ...* BY DATE: 11/27/85  
PRINCIPAL ENGINEER  
TRAFFIC DIVISION  
CHIEF PUB WKS ENGR

**SEWER IMPROVEMENT PLANS**

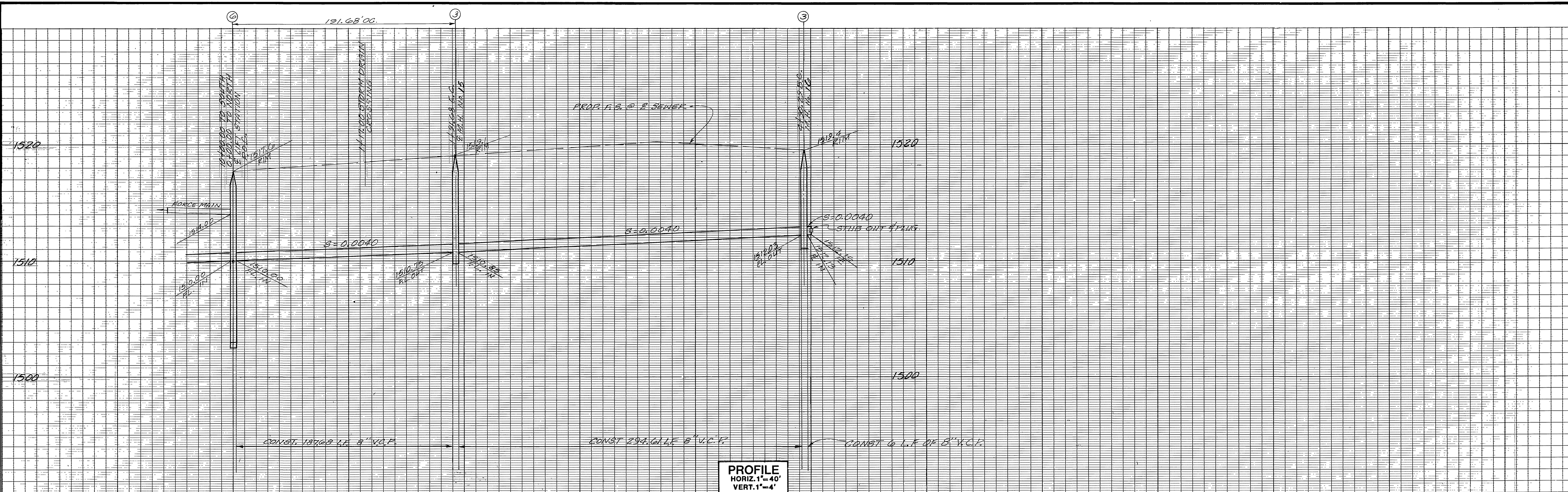
CANYON SPRINGS ASSESSMENT DISTRICT

PARCEL MAP NO. 19618  
CONSTRUCTION PHASE III, STAGE 2  
EASEMENT IN BACK OF PARCELS 1-7  
STA. 10+00.00 TO STA. 20+37.27

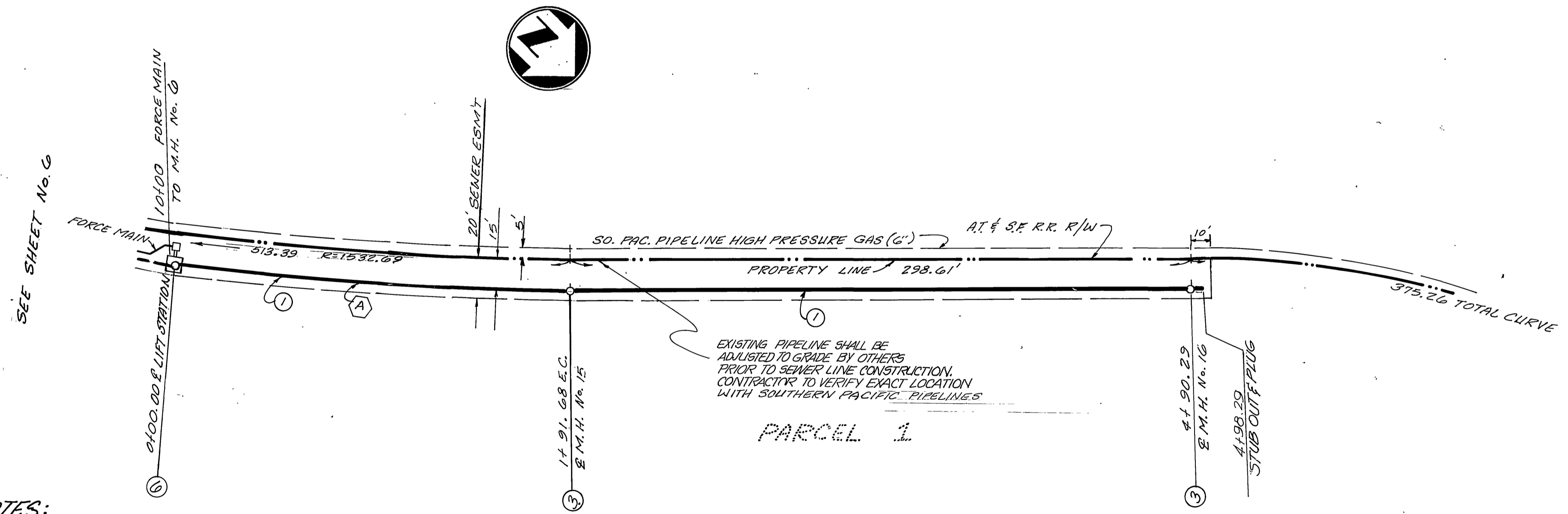
ACCOUNT NO. \_\_\_\_\_  
DRAWING NUMBER: **S - 1410**  
SHEET **6** OF **8**  
J.N. 6651504

SCALE: HORIZ. 1"=40', VERT. 1"=4'





PROFILE  
 HORIZ. 1"=40'  
 VERT. 1"=4'  
 PLAN  
 SCALE: 1"=40'

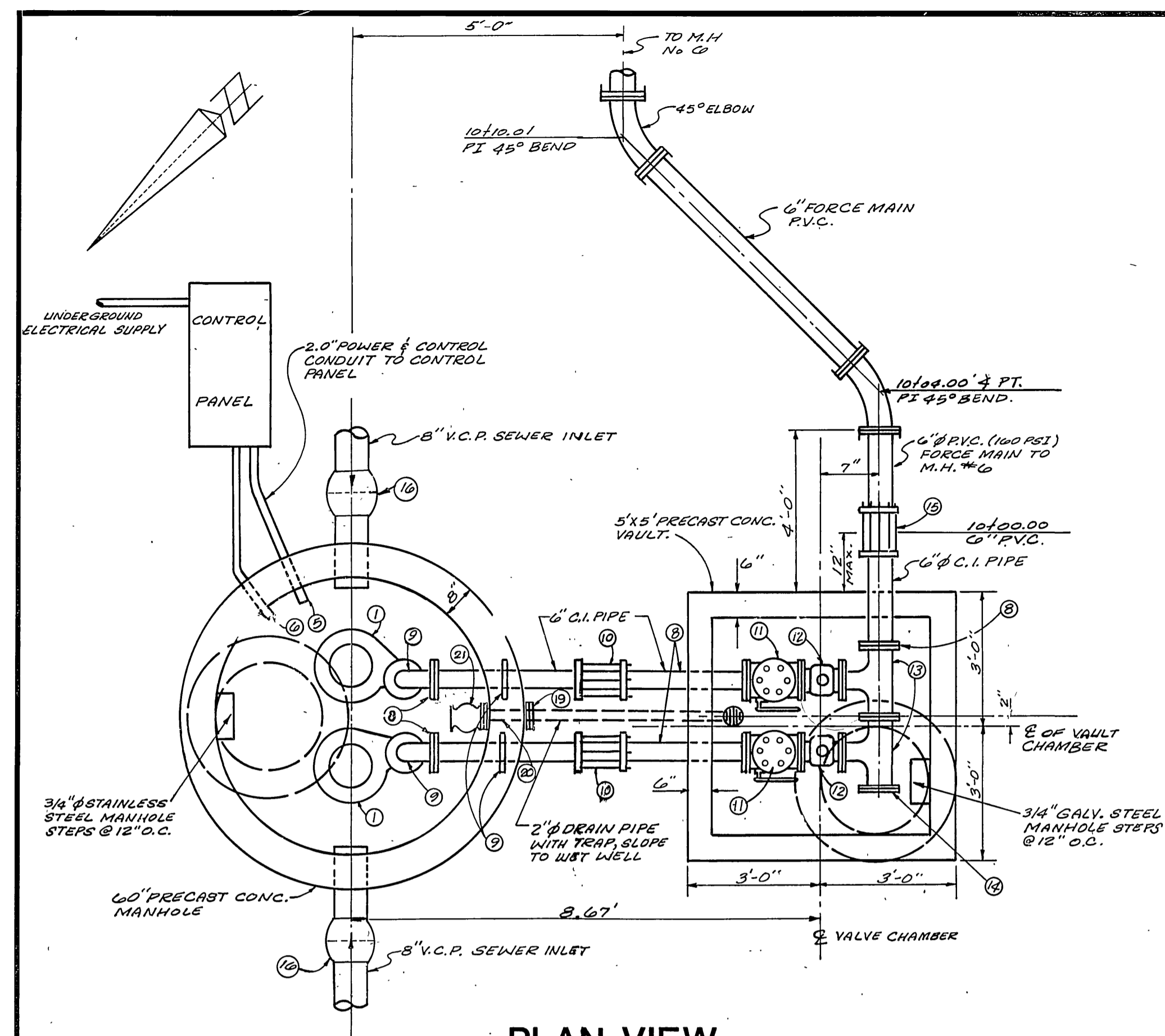


- CONSTRUCTION NOTES:**
- 1) CONSTRUCT 8" V.C.P. SEWER MAIN.
  - 2) CONSTRUCT 4" V.C.P. SEWER LATERAL PER CITY OF RIVERSIDE STD. DNG. N. 562.
  - 3) CONSTRUCT MANHOLE PER CITY OF RIVERSIDE STD. DNG. NO. 500
  - 4) CONSTRUCT LIFT STATION PER DETAIL ON SHEET 8

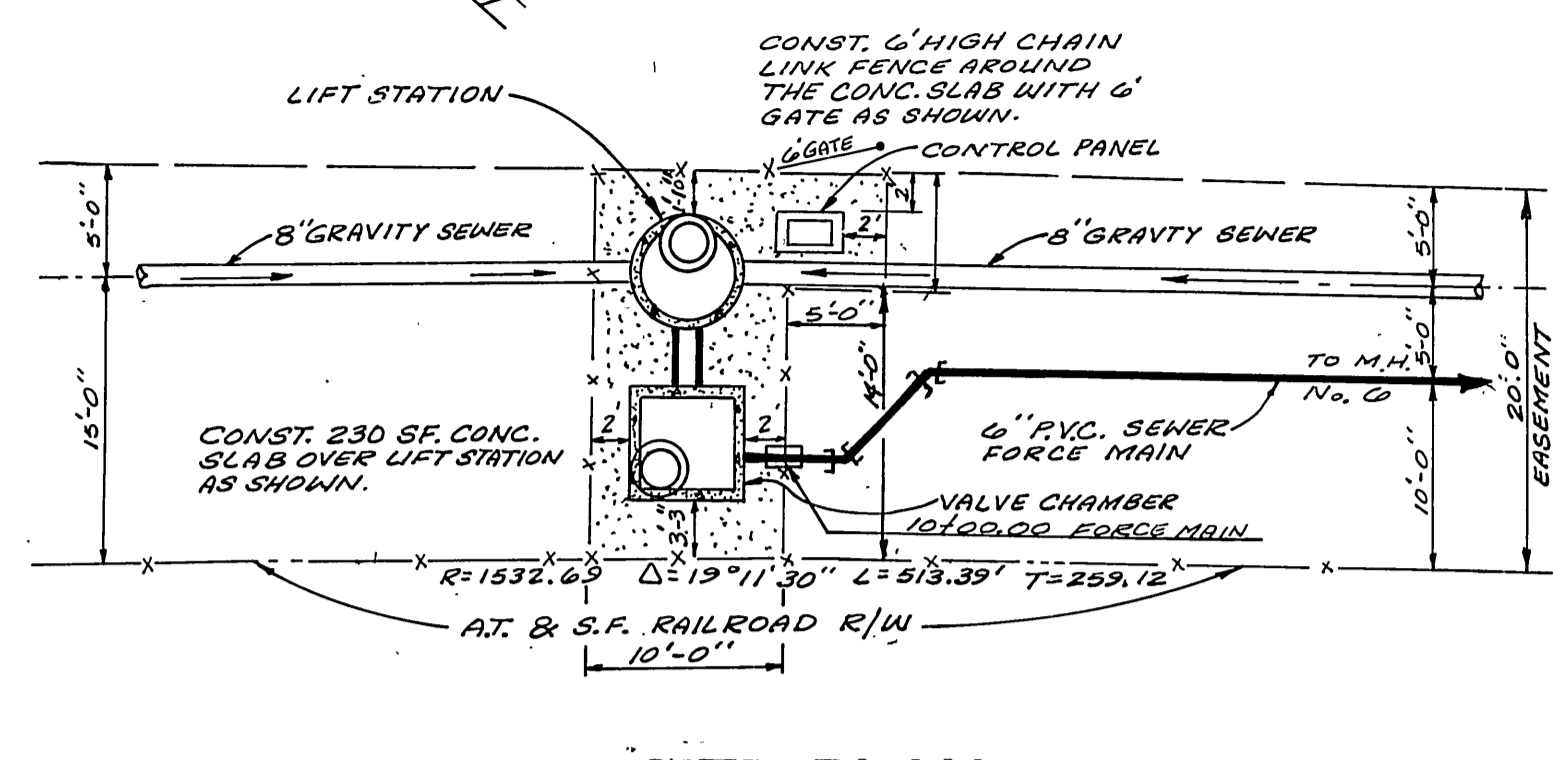
PIPE LINE CURVE DATA			
Δ	R	L	T
A	7° 05' 46"	191.68'	25.96'

*AS-BUILT PER PLANS 1-12-06 <sup>TH</sup> SEWER IMPROVEMENT PLANS		INDEXED										
VERIFICATION OF LOCATION ONLY AS OF DATE: _____ SO. PACIFIC PIPELINE DATE _____ SANTA FE ENERGY CO. DATE _____	BENCH MARK: RIV. CO: B.M. BRASS DISC MARKED M-64-69 IN THE CENTER OF A 8' x 16' HDWL @ THE S.W. CORNER OF HWY. 60 & DAY ST. 53' WEST OF DAY ST. & 23' S.E. OF N.E. CORNER OF A C.S.D.H. R/W FENCE. ELEVATION = 1612.241	<div style="text-align: center;"> <p>Greiner Engineering of California          5225 Canyon Crest Drive          Bldg. 200, Suite 253          Riverside, California 92507          (714) 351-8328          (714) 788-7748          A Greiner Engineering, Inc. Company</p> </div> <p>PLANS PREPARED UNDER THE DIRECTION OF:  <i>David J. Lyman</i> R.C.E. NO. 30234 DATE 2/25/85          DESIGNED BY <i>WED</i> DRAWN BY <i>G.H.</i> CHECKED BY <i>H.R.</i> </p>	<table border="1" style="width:100%; border-collapse: collapse;"> <tr> <td colspan="2">CITY OF RIVERSIDE, CALIFORNIA PUBLIC WORKS DEPARTMENT</td> <td colspan="2">CANYON SPRINGS ASSESSMENT DISTRICT</td> </tr> <tr> <td>APPROVED BY PRINCIPAL ENGINEER PARK DEPARTMENT TRAFFIC DIVISION CHIEF PUB WKS. ENGR</td> <td>BY DATE <i>[Signature]</i> 1/23/86</td> <td>APPROVED BY DIRECTOR OF PUBLIC WORKS <i>[Signature]</i></td> <td>DATE 2.5.86</td> </tr> </table>	CITY OF RIVERSIDE, CALIFORNIA PUBLIC WORKS DEPARTMENT		CANYON SPRINGS ASSESSMENT DISTRICT		APPROVED BY PRINCIPAL ENGINEER PARK DEPARTMENT TRAFFIC DIVISION CHIEF PUB WKS. ENGR	BY DATE <i>[Signature]</i> 1/23/86	APPROVED BY DIRECTOR OF PUBLIC WORKS <i>[Signature]</i>	DATE 2.5.86	ACCOUNT NO. _____ DRAWING NUMBER S - 1410 SHEET 7 OF 8
CITY OF RIVERSIDE, CALIFORNIA PUBLIC WORKS DEPARTMENT		CANYON SPRINGS ASSESSMENT DISTRICT										
APPROVED BY PRINCIPAL ENGINEER PARK DEPARTMENT TRAFFIC DIVISION CHIEF PUB WKS. ENGR	BY DATE <i>[Signature]</i> 1/23/86	APPROVED BY DIRECTOR OF PUBLIC WORKS <i>[Signature]</i>	DATE 2.5.86									
		SCALE: HORIZ. 1"=40', VERT. 1"=4'										



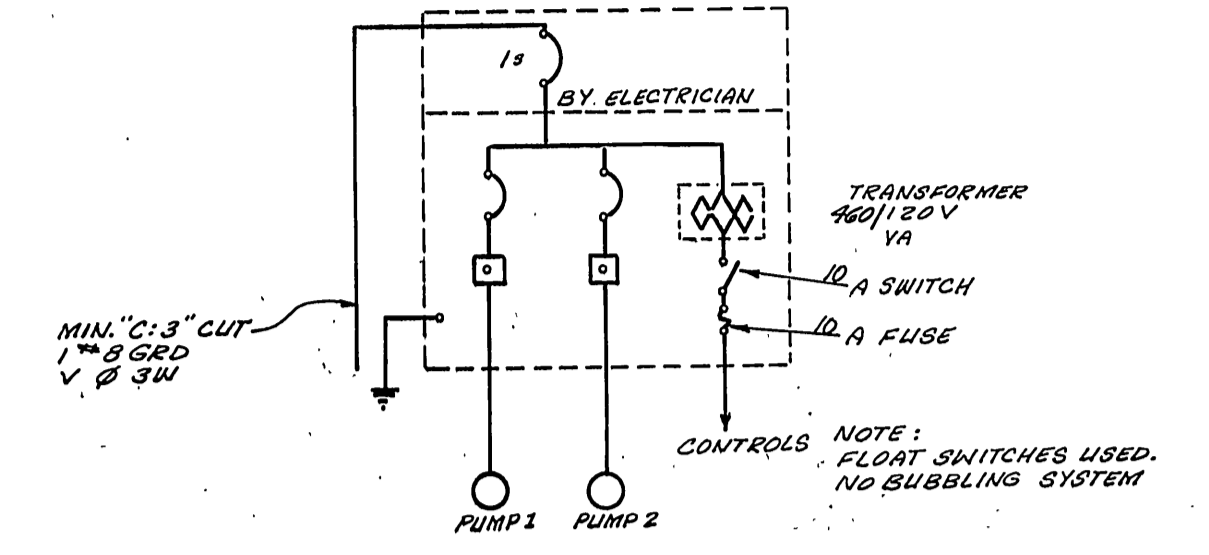
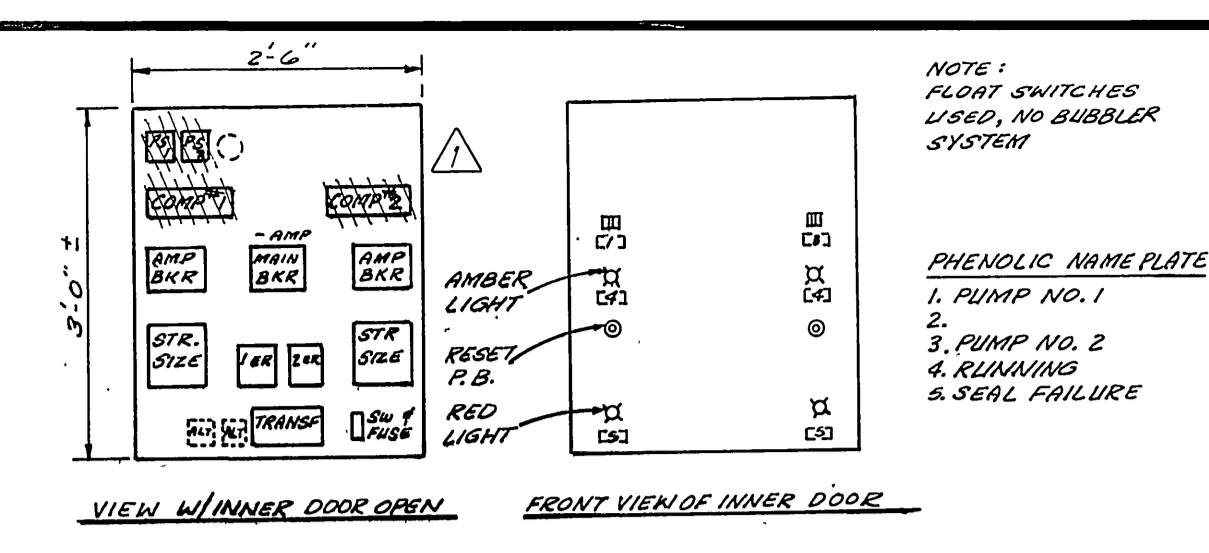


**PLAN VIEW**  
NOT TO SCALE

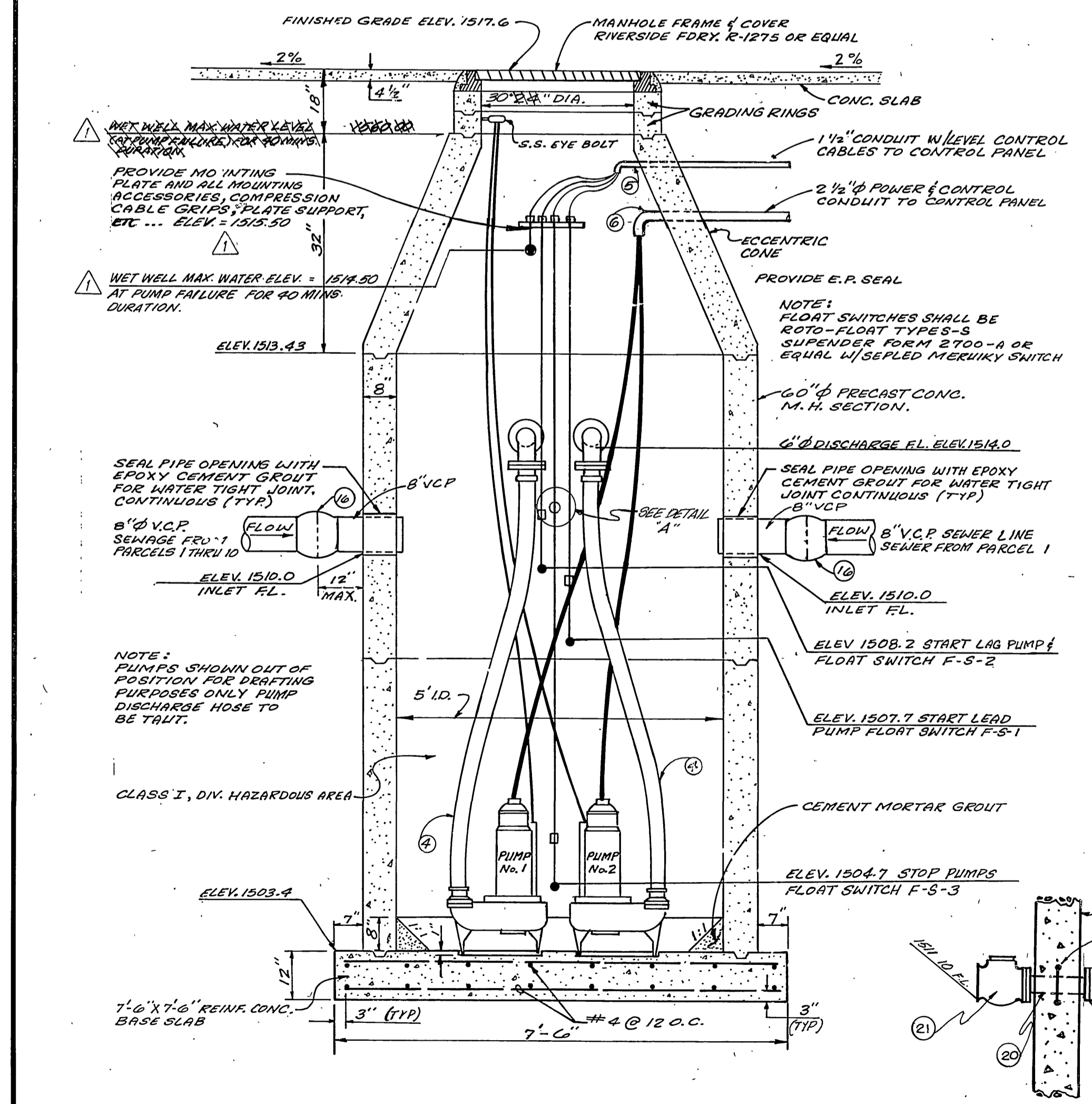


**SITE PLAN**  
SCALE 1" = 10'

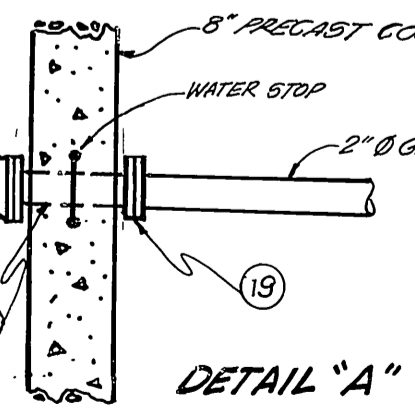
ESSCO TORQUE FLUID SUBMERSIBLE PUMPS OR EQUAL			
PUMP DESIGN CHARACTERISTICS			
250 GPM,	37' TDH,	7 1/2 HP,	1155 RPM



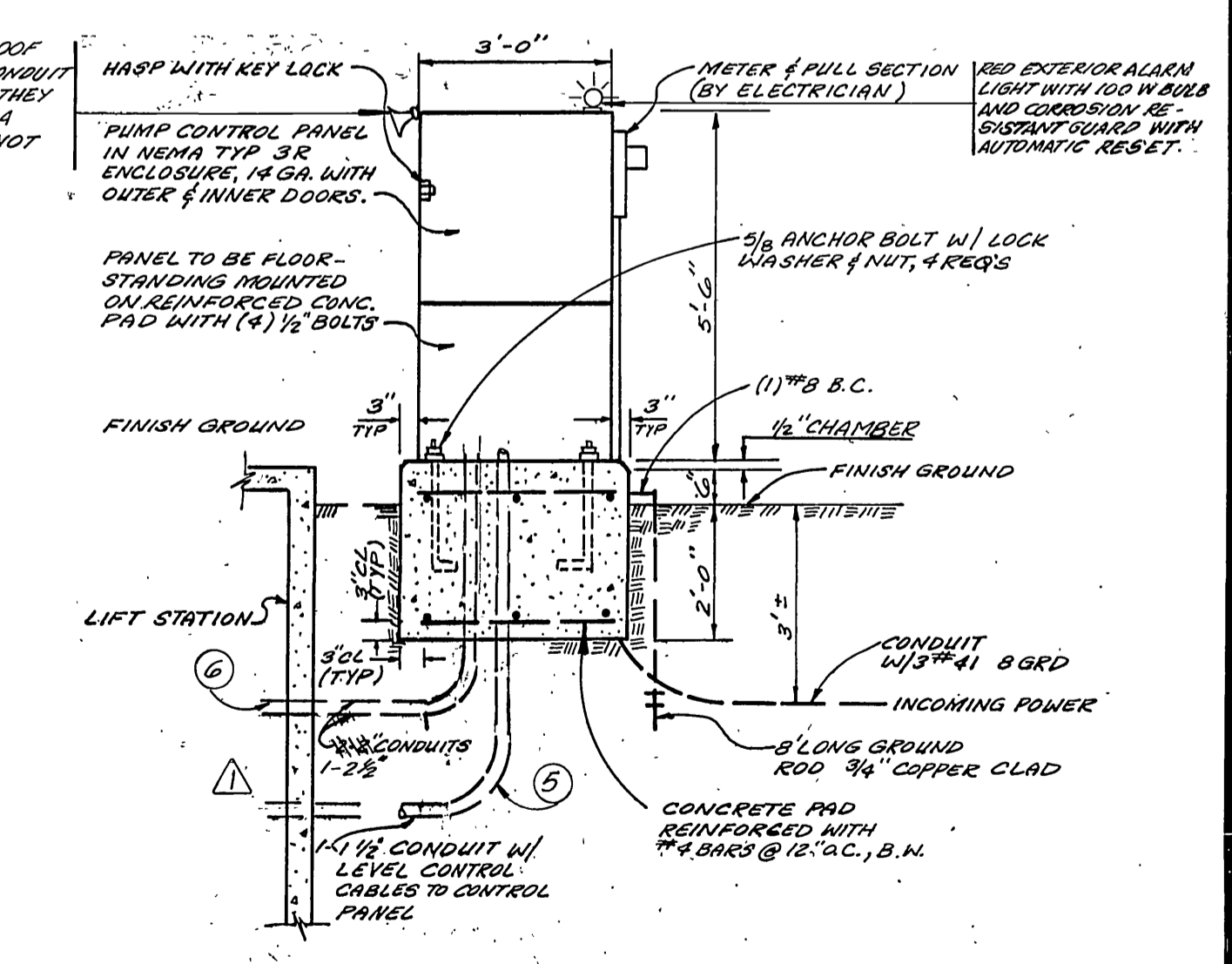
**SCHEMATIC DIAGRAM**  
**PUMP CONTROL SYSTEM**  
NOT TO SCALE



**SECTION A-A**  
**VALVE CHAMBER**  
NOT TO SCALE



**DETAIL "A"**



**ESSCO PUMP CONTROL PANEL DETAIL**  
NOT TO SCALE: \* AS-BUILT PER PLANS 1-12-06

**GENERAL NOTES**

- CONTRACTOR SHALL VERIFY ALL DIMENSIONS AND GENERAL ARRANGEMENT OF EQUIPMENT SHOWN.
- CONTRACTOR SHALL INSTALL A DUPLEX, SUBMERSIBLE, AUTOMATIC SEWAGE LIFT STATION AS SHOWN. THE STATION SHALL BE COMPLETED WITH ALL NECESSARY ITEMS INCLUDING PUMP, CONTROL PANEL AND ALL ELECTRICAL WORKS.
- CONTRACTOR SHALL VERIFY ELECTRICAL SERVICE REQUIREMENTS & SERVICE LOCATION WITH THE CITY OF RIVERSIDE PRIOR TO SUBMITTING BID.
- ELECTRICAL INSTALLATION SHALL CONFORM TO ALL APPLICABLE REQUIREMENTS OF THE CITY OF RIVERSIDE, THE LATEST EDITION OF THE NATIONAL ELECTRICAL CODE AND THE STATE OF CALIFORNIA LOW VOLTAGE ELECTRICAL SAFETY ORDINANCES, TITLE 8.
- ALL ELECTRICAL CONDUITS AND FITTINGS IN CONTACT WITH EARTH SHALL BE RIGID PVC, SCHEDULE 40 WITH 24" MINIMUM COVER.
- ALL EXPOSED ELECTRICAL CONDUITS AND FITTINGS SHALL BE RIGID GALVANIZED STEEL, EXCEPT FLEXIBLE CONDUIT SHALL BE LEAD-FREE.
- ALL CONDUITS FROM WET WELL TO CONTROL PANEL SHALL BE SEALED.
- AFTER INSTALLATION, THE LBS AND CONNECTORS SHALL BE SEALED WATER-TIGHT AND CASTING USING A BITUMASTIC PAINT.
- PUMPS, VALVES, CAST IRON PIPING, BOLTS, NUTS, AND ALL FITTINGS SHALL BE PAINTED WITH TWO (2) MIL. COATS OF KOPERS 300M BITUMASTIC EPOXY.
- CAST-IN-PLACE CONCRETE SHALL BE PORTLAND CEMENT CONCRETE AND SHALL DEVELOP A MINIMUM COMPRESSIVE STRENGTH OF 3000 PSI IN 28 DAYS.
- PUMPS SHALL BE POSITIONED SO THAT HOSES ARE FLUSH. CUT HOSES TO PROPER LENGTH, INSTALL TRAP. USE FRANKLESS STEEL CLAMPS.
- MOTOR CONTROL CABLES TO BE STRAPPED TO POWER CABLE EVERY 12" USING PANCLIT RESIN-EPoxy CABLE TIES. EXCESS MOTOR LEADS TO BE CUT AS REQUIRED, LEAVING 12" SLACK.
- FLOOR OF NET WELL TO BE SMOOTH AND LEVEL.
- EXACT SIZE OR REINFORCED CONCRETE FOOTING, FOR THE CONTROL PANEL SHALL BE DETERMINED BY SIZE OF CONTROL PANEL SUPPLIED BY THE PUMP MANUFACTURER.
- CHECK VALVES, GATE VALVE AND TEES IN THE VALVE CHAMBER SHALL BE SUPPORTED WITH CONCRETE BRICKS.
- ALL CAST IRON PIPE AND FITTINGS SHALL BE CEMENT MORTAR LINED.
- ALL CAST IRON PIPE FITTINGS AND VALVES SHALL BE FIELD COATED WITH 16 MIL OF COAL TAR EPOXY PER NOTE 9 HEREOF.
- PUMP #1 AND PUMP #2 SHALL BE PAINTED ON THE DISCHARGE PIPING OF EACH PUMP AS A POSITIVE CLEARLY VISIBLE FROM GRADE, USING PAINT OF A CONTRASTING COLOR.
- REQUIRED SUPERVISION FOR INSTALLING, TESTING, AND STARTING SHALL BE FURNISHED BY FACTORY TRAINED PERSONNEL AT NO CHARGE. VENDOR SHALL PROVIDE A LIST OF FIVE EQUIVALENT INSTALLATIONS SUCCESSFULLY OPERATING FOR A MINIMUM PERIOD OF 5 YEARS.
- TO RECEIVE CONSIDERATION OF ANY ALTERNATE, FULL DESCRIPTIVE MATERIAL MUST BE SUBMITTED TO ENGINEER 10 DAYS PRIOR TO BID DATE.

**MATERIAL SCHEDULE**

- LIFT STATION NOTES, PHASE III, WEST FORTY (M-R002)
- | NO. | ITEM  |
|-----|---|
| 1   | ESSCO MODEL 4 x 12-TF SIZE 6" NON-CLOG VORTEX TORQUE FLUID HEAVY DUTY RAW SEWAGE PUMP FOR 250 GPM AT 37' TDH COUPLED TO U.L. TEXP. CLASS I, GROUP D. RELIANT SUBMERSIBLE MOTOR, 7 1/2 HP 1155 RPM WITH 30 FT. OF 8-WIRE CABLE, TWO SEPARATE SEALS, OIL LUBRICATION, 30-DAY WARNING SYSTEM, 1/2" THERMAL PROTECTION WITH ESSCO OIL AGENT APPARATUS. PATENT 4,134,711 (OR EQUAL). |
| 2   | POWER CABLE ASSEMBLY FURNISHED WITH PUMP 30' CABLE 4/C (3 TERMINAL, 1 GROUND), 30' CABLE 4/C (2 PROTECTION WIRES, 2 WARNING WIRES). (VERIFY WITH MFR.)  |
| 3   | SIZE 1/4" x 5/16" STAINLESS STEEL NYLON COVERED LIFTING CABLES WITH 1/2" x 6" CAD. PLATED EYEBOLT AND HOOK.   |
| 4   | SIZE 6" 100 PSI DISCHARGE HOSE COMPLETE WITH CADMIUM PLATED STEEL NIPPLES. STAINLESS STEEL BANDS AND 125# F.F. CAST IRON MATING FLANGES.  |
| 5   | EXPLOSION-PROOF 1 1/2 LB COMPLETE WITH FOUR WATER-TIGHT CONNECTORS FOR MOTOR CONTROL LEADS. AFTER INSTALLATION THE LBS AND CONNECTORS SHALL BE SEALED WATER-TIGHT AND GASTIGHT, USING A BITUMASTIC PAINT. THE CONTRACTOR SHALL BE RESPONSIBLE FOR PROVIDING THIS SEAL AND WATER-TIGHT CONDUITS.   |
| 6   | EXPLOSION-PROOF 2 1/2 LB WITH SEAL, CLASS I, DIV. 1, PROVIDE WATER-TIGHT CONNECTIONS FOR CABLE ENTRY INTO LB. DO NOT SLICE IN LB. (MINIMUM OF 3 WATER-TIGHT CONNECTIONS FOR CABLES INTO LB.) PROVIDE ONE SPARE PLUGGED ENTRY.   |
| 7   | SIZE 4" x 6" CAST IRON FLANGED INCREASING 90° ELBOW.  |
| 8   | SIZE 6" CAST IRON PIPE FLANGED x PE.  |
| 9   | SIZE 6" CAST IRON WALL FLANGED ASSEMBLY, BOLT ON TYPE.  |
| 10  | SIZE 6" CAST IRON COUPLING, SMITH-BLAIR NO. 431.  |
| 11  | SIZE 6" 125# F.F. FLANGED I.B.B.M. SWING CHECK VALVE WITH OUTSIDE (LEVER AND SPRING), BRONZE MOUNTED.   |
| 12  | SIZE 6" 125# F.F. FLANGED I.B.B.M. NON-RISING STEM GATE VALVE.  |
| 13  | SIZE 6" x 6" CAST IRON FLANGED TEE.   |
| 14  | SIZE 6" CAST IRON BLIND FLANGED.  |
| 15  | SIZE 6" TRANSITION CAST COUPLING, SMITH-BLAIR NO. 433.  |
| 16  | SIZE 8" FLEXIBLE COUPLING, MISSION CLAY PIPE, BOOT WITH S.S. CLAMPS.  |
| 17  | FLOAT SWITCH SHALL BE ROTO-TYPE S SUSPENDED FORM 2700-A OR EQUAL WITH SEALED MERCURY SWITCH.  |
| 18  | SIZE 2" FLANGED CHECK VALVE   |
| 19  | SIZE 2" SCREW-ON FLANGED  |
| 20  | SIZE 2" SPOOL WITH WATER STOP   |
| 21  | SIZE 2" 125# F.F. FLANGED I.B.B.M. SWING CHECK VALVE WITH OUTSIDE (LEVER AND SPRING), BRONZE MOUNTED.   |

**SECTION**  
**LIFT STATION WET WELL**  
NOT TO SCALE

BENCH MARK: RIV. CO. B.M.  
BRASS DISC MARKED M-64-69 IN THE CENTER OF A 8" x 16" HDML @ THE S.W. CORNER OF HWY. 60 & DAY ST. 53' WEST OF DAY ST. & 23' S.E. OF N.E. CORNER OF A C.S.D.H. R/W FENCE, ELEVATION = 1612.241

**Greiner**  
Greiner Engineering of California  
5253 Canyon Crest Drive  
Bldg 200, Suite 253  
Riverside, California 92507  
(714) 951-9329  
(714) 788-7746  
Greiner Engineering, Inc. Company  
PLANS PREPARED UNDER THE DIRECTION OF:  
*Brian J. Moran* R.C.E. NO. 30534 DATE 9/25/05  
DESIGNED BY HA DRAWN BY GH CHECKED BY BLU

CITY OF RIVERSIDE, CALIFORNIA  
PUBLIC WORKS DEPARTMENT  
APPROVED BY: [Signature]  
PRINCIPAL ENGINEER: [Signature]  
PARK DEPARTMENT  
TRAFFIC DIVISION  
CHIEF PUB WKS ENGR: [Signature]  
DATE 2.5.06

CANYON SPRING-ASSESSMENT DISTRICT  
PARCEL MAP NO. 19618  
CONSTRUCTION PHASE III, STAGE 2  
SEWER LIFT STATION AND DETAILS  
ACCOUNT NO. DRAWING NUMBER S-1410  
SHEET 8 OF 8  
SCALE: NOT TO SCALE  
J.N. 6651504