

- GENERAL NOTES**
- CONSTRUCTION SHALL BE IN ACCORDANCE WITH THE CITY OF RIVERSIDE, DEPT. OF PUBLIC WORKS, STANDARD DRAWINGS, STANDARD DRAWING NO. 10 AND THE STANDARD SPECIFICATIONS FOR PUBLIC WORKS CONSTRUCTION, CURRENT EDITION.
  - LOCATION OF LATERALS TO BE DETERMINED IN THE FIELD AT THE DIRECTION OF THE OWNER. AVOID CONFLICTS WITH PROPOSED AND/OR EXISTING FACILITIES.
  - CONTRACTOR IS TO VERIFY EXISTING SEWER ELEVATION PRIOR TO CONSTRUCTION.
  - FINISHED FLOOR ELEVATIONS SHALL NOT BE LESS THAN 4' ABOVE THE SEWER FLOW LINE AT POINT OF CONNECTION WITHOUT HAVING A PROPER BACKWATER VALVE INSTALLED IN THE LATERAL.
  - THE SEWER CONTRACTOR SHALL ADJUST MANHOLES TO FINAL GRADE AFTER PAVING IS COMPLETED.
  - A PLUG SHALL BE INSTALLED AND WILL REMAIN IN PLACE WHERE THE NEW SEWER CONNECTS WITH THE EXISTING SEWER UNTIL THE NEW SEWER IS ACCEPTED BY THE CITY.
  - THE PRIVATE ENGINEER SIGNING THESE PLANS IS RESPONSIBLE FOR ASSURING THE ACCURACY AND ACCEPTABILITY OF THE WORK HEREON. IN THE EVENT OF DISCREPANCIES ARISING DURING CONSTRUCTION, THE PRIVATE ENGINEER SHALL BE RESPONSIBLE FOR DETERMINING AN ACCEPTABLE SOLUTION AND REVISING THE PLANS FOR THE APPROVAL BY THE CITY.
  - THE CONTRACTOR SHALL CALL IN A LOCATION REQUEST TO "UNDERGROUND SERVICE ALERT" (USA), PHONE NO. 1-800-422-4133, TWO WORKING DAYS BEFORE DIGGING. CONSTRUCTION PERMITS WILL NOT BE ISSUED BY THE PUBLIC WORKS DEPARTMENT INVOLVING EXCAVATION FOR UNDERGROUND FACILITIES UNLESS THE APPLICANT HAS BEEN PROVIDED AN INQUIRY IDENTIFICATION NUMBER BY U.S.A.
  - IT SHALL BE THE RESPONSIBILITY OF THE CONTRACTOR TO CLEAR THE RIGHT OF WAY IN ACCORDANCE WITH THE PROVISIONS OF LAW AS IT AFFECTS EACH UTILITY INCLUDING IRRIGATION LINES AND APPURTENANCES AND AT NO COST TO THE CITY.
  - ALL FLAGGED ELEVATIONS SHALL BE STAKED IN THE FIELD BY THE PRIVATE ENGINEER.
  - LATERALS ARE TO BE 4" AND EXTEND TO PROPERTY LINE.
  - PIPE SHALL BE BEDDED PER CASE I, STANDARD DRAWING 452, UNLESS OTHERWISE NOTED ON THE PLAN.
  - ALL STUBS AND LATERALS TO BE CONSTRUCTED IN ACCORDANCE WITH STANDARD DRAWING NO. 562, STUBS SHALL BE FLAGGED AND CAPPED.
  - DEVELOPER OR CONTRACTOR TO GIVE P.C.F.C. 5 DAYS WRITTEN NOTICE PRIOR TO STARTING WORK WITHIN R.C.E.C. RIGHT OF WAY. R.C.F.C. ENCROACHMENT PERMIT NO.

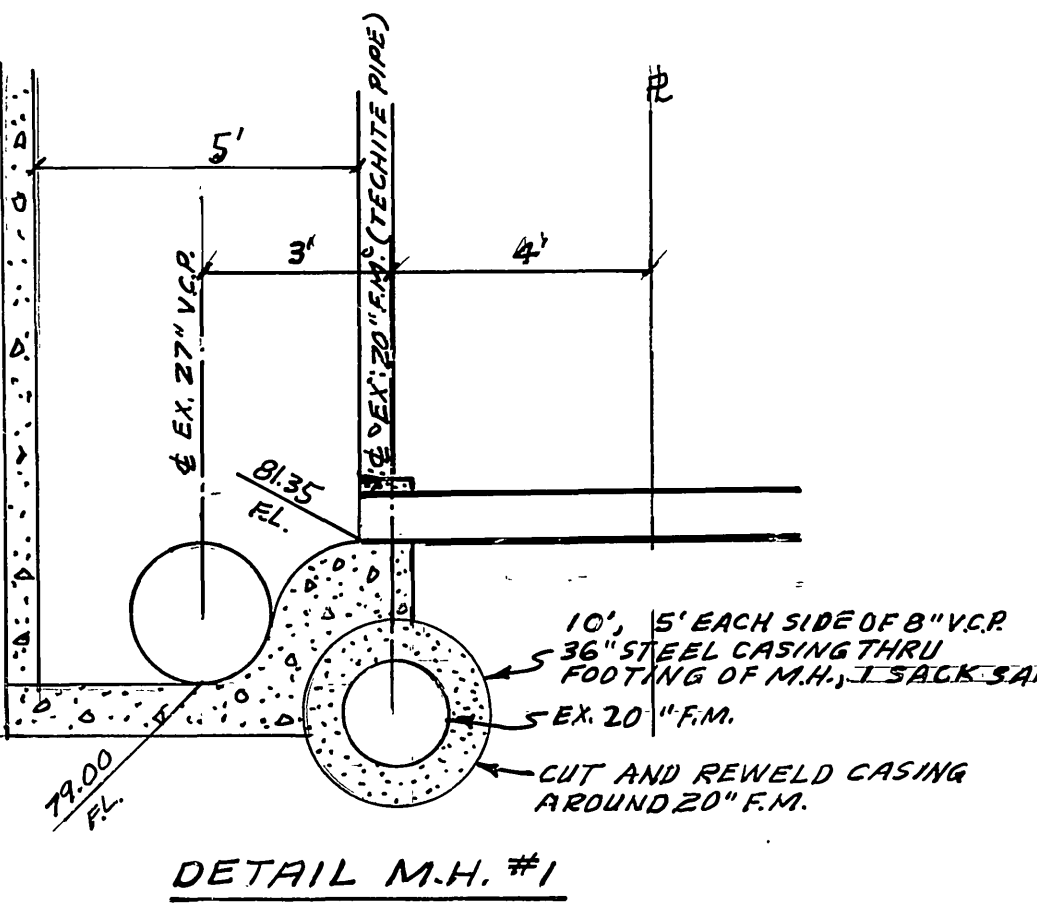
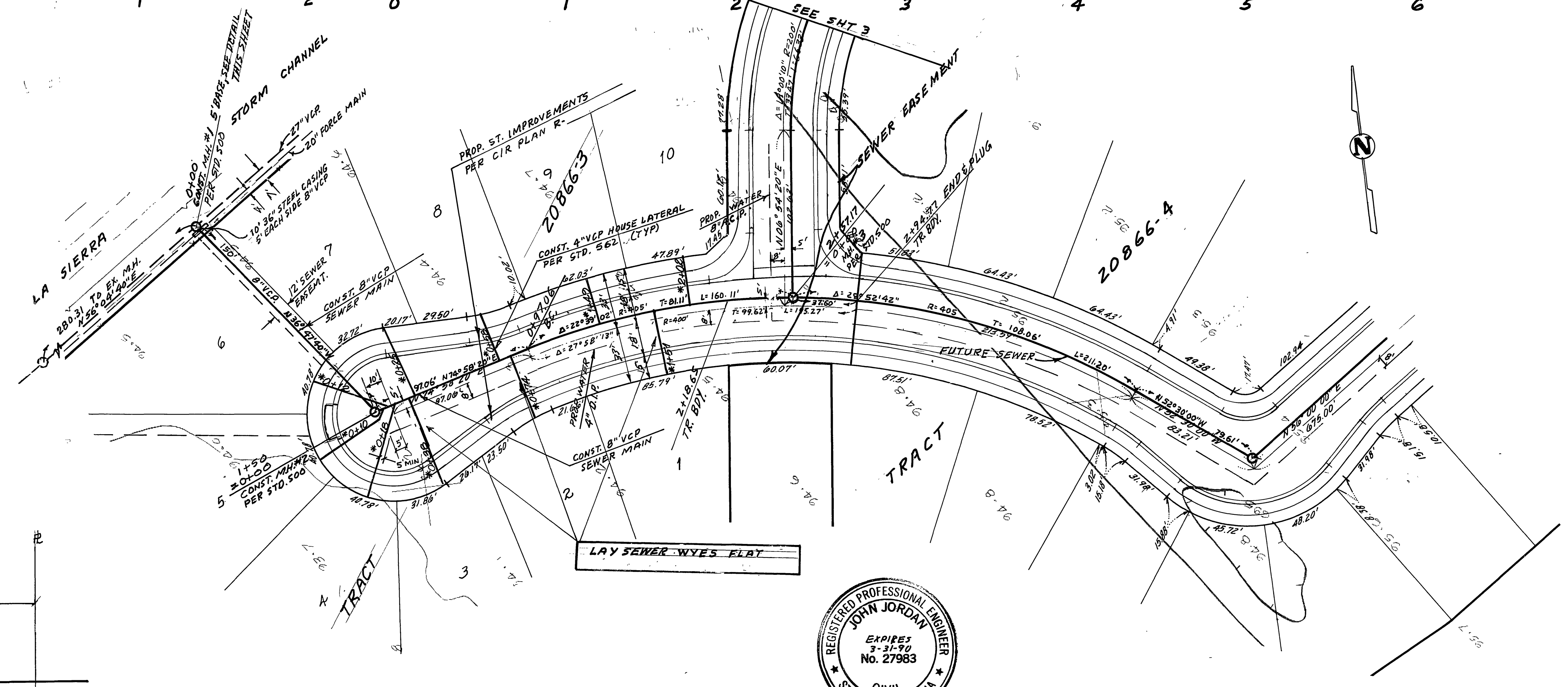
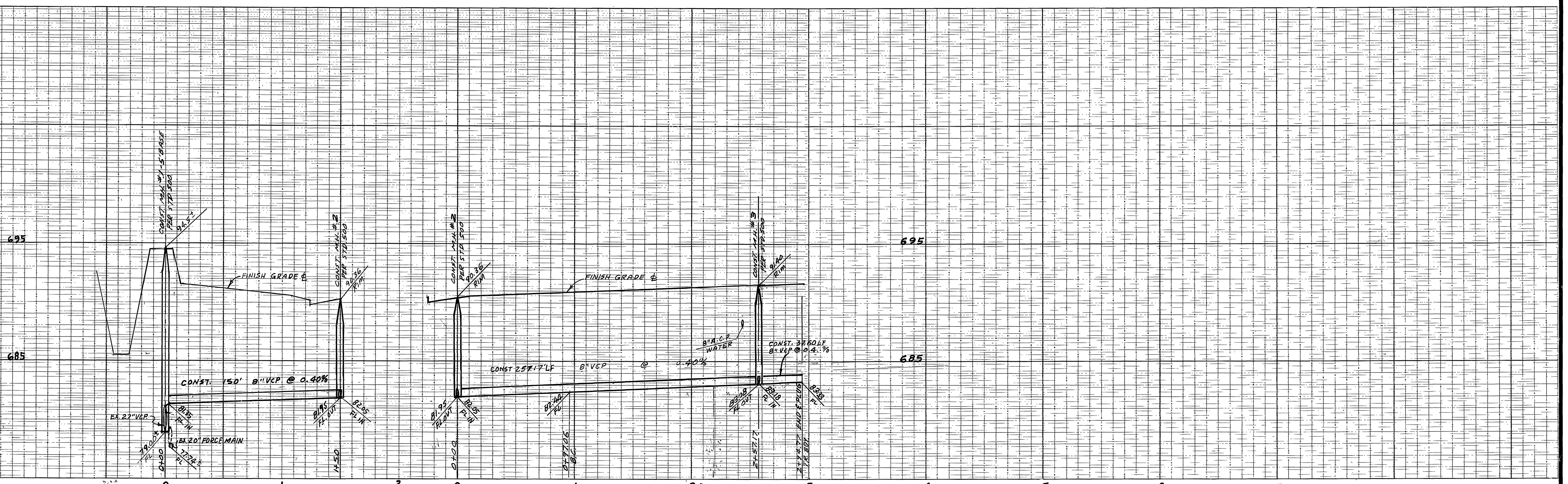
- NOTICE TO CONTRACTOR**
- THE EXISTENCE AND LOCATION OF ANY UNDERGROUND UTILITY PIPES OR STRUCTURES SHOWN ON THESE PLANS ARE OBTAINED BY A SEARCH OF THE AVAILABLE RECORDS. TO THE BEST OF OUR KNOWLEDGE, THERE ARE NO EXISTING UTILITIES EXCEPT THOSE SHOWN ON THESE PLANS.
  - THE CONTRACTOR IS REQUIRED TO TAKE DUE PRECAUTIONARY MEASURES TO PROTECT THE UTILITY LINES SHOWN AND ANY OTHER LINES NOT OF RECORD OR NOT SHOWN ON THESE PLANS.
  - CALL UNDERGROUND SERVICE ALERT (USA) 1-800-422-4133 AT LEAST 48 HOURS PRIOR TO EXCAVATION



**BENCH MARK** ELEV. 697.602  
BRASS DISK SET IN CONC. HEADWALL 1200'±  
W/4 FROM E. TIERCE 18" N/4 FROM E. A.T.  
E.S.F. R/R STAMPED U.S.C. & G.S. B.M. J33  
1924. RIV. B.M. 601-30-69

ALBERT A. WEBB ASSOCIATES CIVIL ENGINEERS 3788 1/2 CAY STREET RIVERSIDE, CALIFORNIA (714) 686-1070		CITY OF RIVERSIDE, CALIFORNIA PUBLIC WORKS DEPARTMENT		*AS BUILT 7/5/90 R/W INDEXED O.A. SEWER PLAN AND PROFILE ACCOUNT No. DRAWING NUMBER TRACT 20866-1 & TRACT 20866-2* INDEX MAP S-1419	
APPROVED BY: <i>John Jordan</i> R.E. No. 27983	DATE: 11-25-85	APPROVED BY: <i>William S. Anderson</i> DIRECTOR OF PUBLIC WORKS	DATE: 5-21-86	SHEET: 1 OF 8	SCALE: NONE
W/O FOR CONCORDIA DEV. F.B. 1053	DESIGNED BY: BEL DRAWN BY: BEL CHECKED BY: BEL	REVISIONS	APPR. DATE		85-64-B





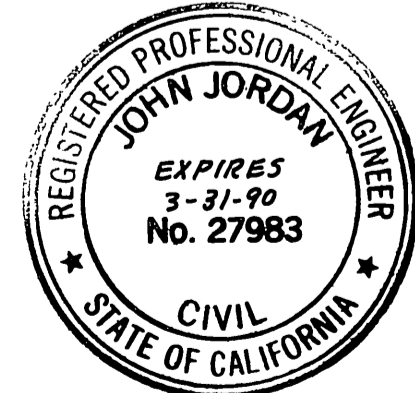
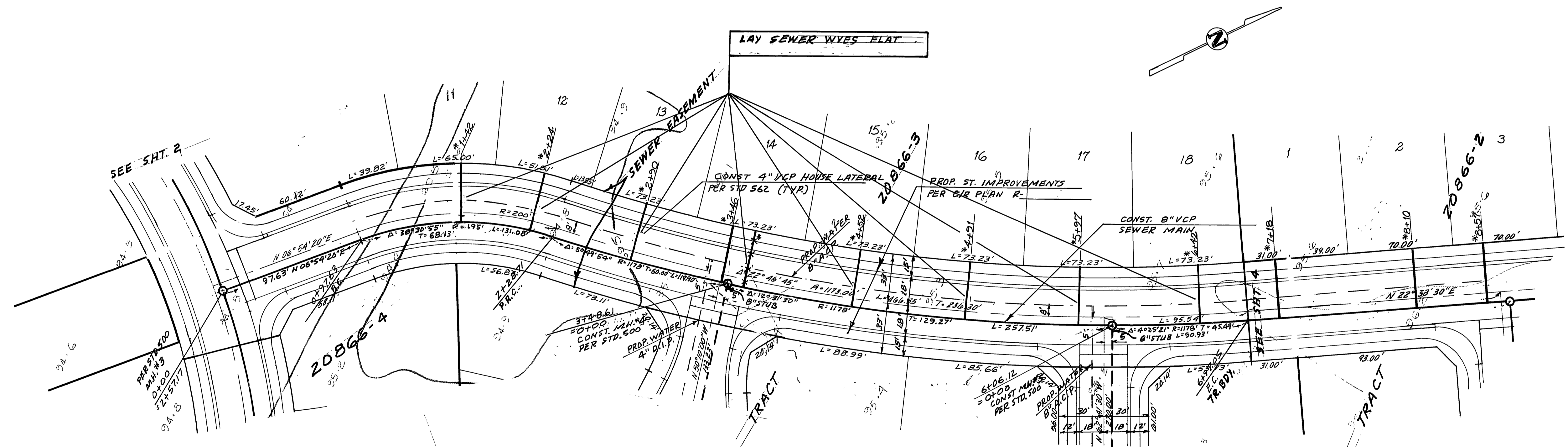
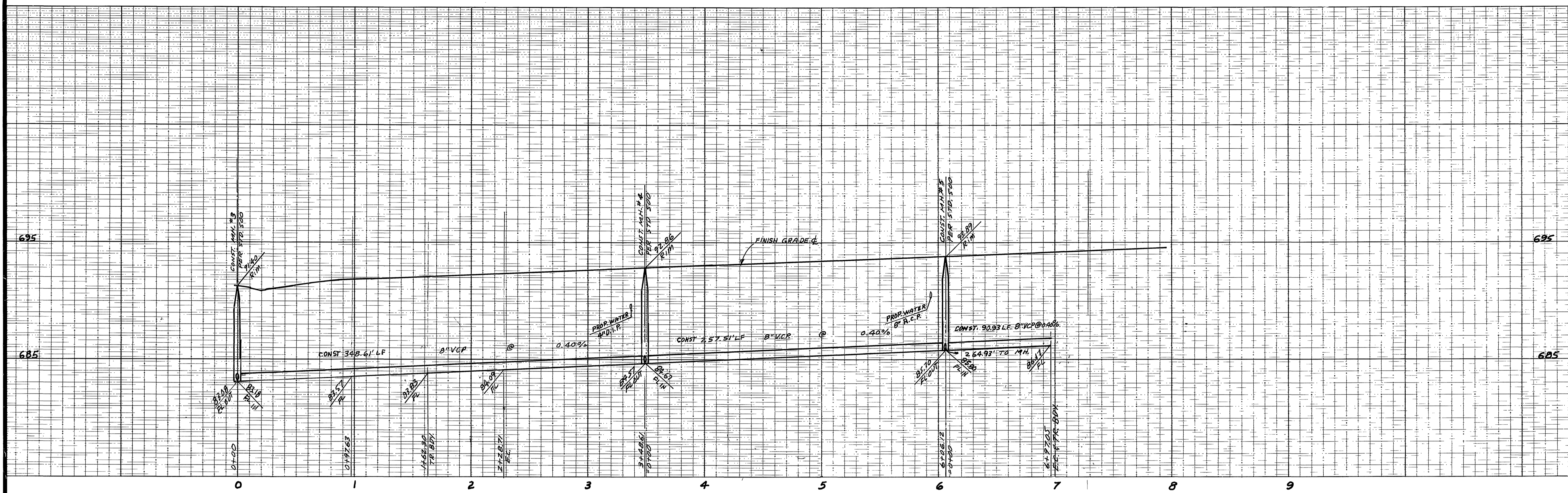
ALBERT A. WEBB ASSOCIATES  
 CIVIL ENGINEERS  
 208 CHERRY STREET  
 RIVERSIDE, CALIFORNIA  
 (714) 686-1070  
 R.E. No. 27983  
 APPROVED BY: *[Signature]* DATE: 11-25-85  
 W.O. FOR: CONCORDIA DEV. F.B. 1053

CITY OF RIVERSIDE, CALIFORNIA  
 DEPARTMENT OF PUBLIC WORKS  
 APPROVED BY: *[Signature]* DATE: 5-21-86  
 PRINCIPAL ENGINEER  
 PARK DEPARTMENT  
 TRAFFIC DIVISION  
 CHIEF PUB. WKS. ENGR.  
 DATE: 5-21-86

INVEYED D.N.  
 ACCOUNT No. \_\_\_\_\_  
 DRAWING NUMBER  
**SEWER PLAN AND PROFILE**  
**TRACT 20866-1**  
**SEWER EASEMENT**  
 SHEET **2** OF **8**  
 SCALE: 1"=40' HORIZ - 1"=4' VERT  
 85-64-B

CITY OF RIVERSIDE  
 WATER SYSTEM  
 BENCH MARK ELEV. 697.682  
 BRASS DISK SET IN CONG. HEADWALL 1200'S  
 W/1/4 FROM & PIERCE 13"± N.W. FROM & A.T.  
 85.5' R/R STAMPED U.S.C. 645. BM 138  
 1924. RIV. B.M. 601-30-69  
 SIGNED: *[Signature]* DATE: 4-28-86





CITY OF RIVERSIDE  
WATER SYSTEM  
SIGNED: *David V. Garcia*  
DATE: 4-28-86

BENCH MARK ELEV. 697.68Z  
BRASS DISK SET IN CONC. HEADWALL 1200'S  
W/4 FROM E PIERCE 13' E N/4 FROM E.A.T.  
85' R/R STAMPED U.S.C. 665, B.M. 138  
1924 RIV. B.M. 601-30-69

ALBERT A. WEBB ASSOCIATES  
CIVIL ENGINEERS  
3788 1/2 CRAW STREET  
RIVERSIDE, CALIFORNIA  
714) 686-1070  
APPROVED BY: *John Jordan* DATE: 11-25-85  
R.E. No. 27983

MARK	REVISIONS	APPR.	DATE

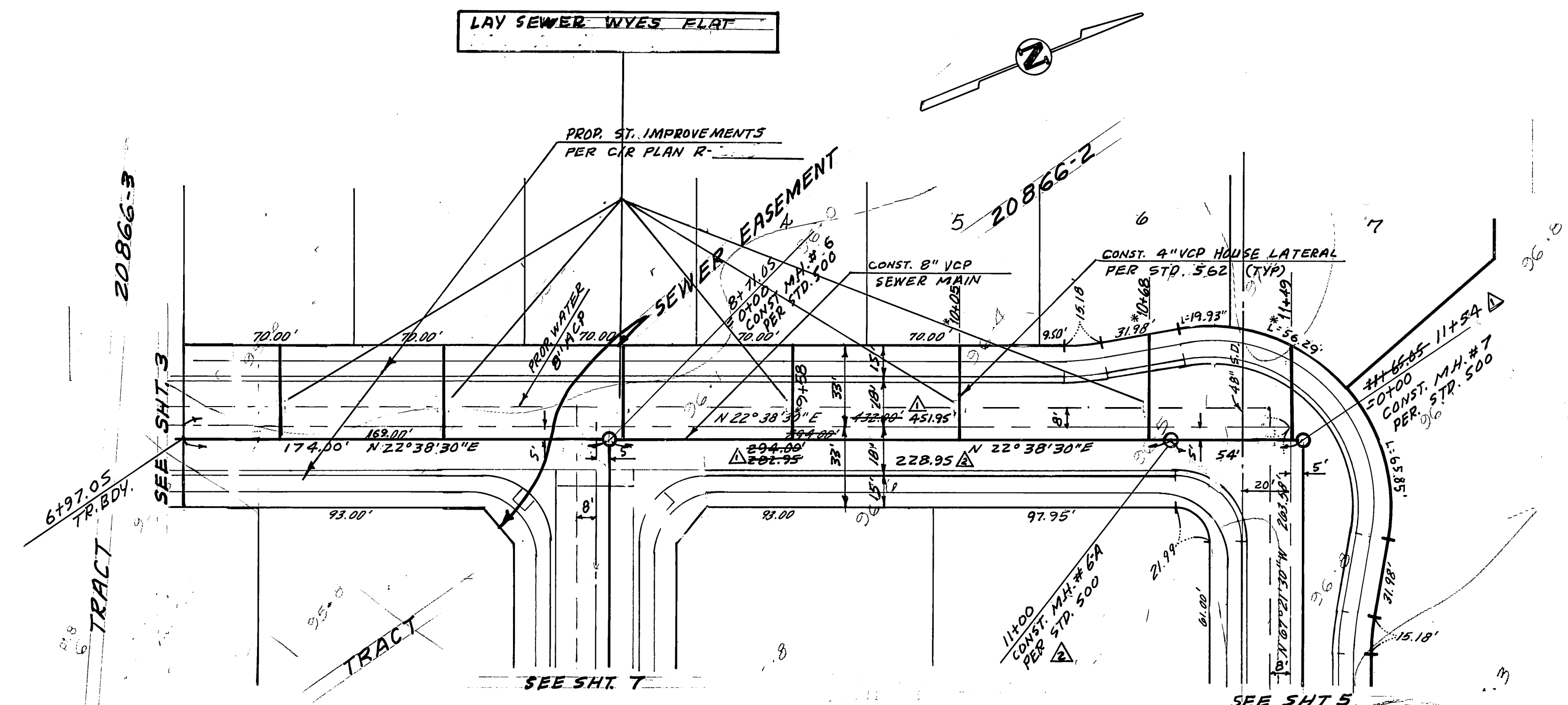
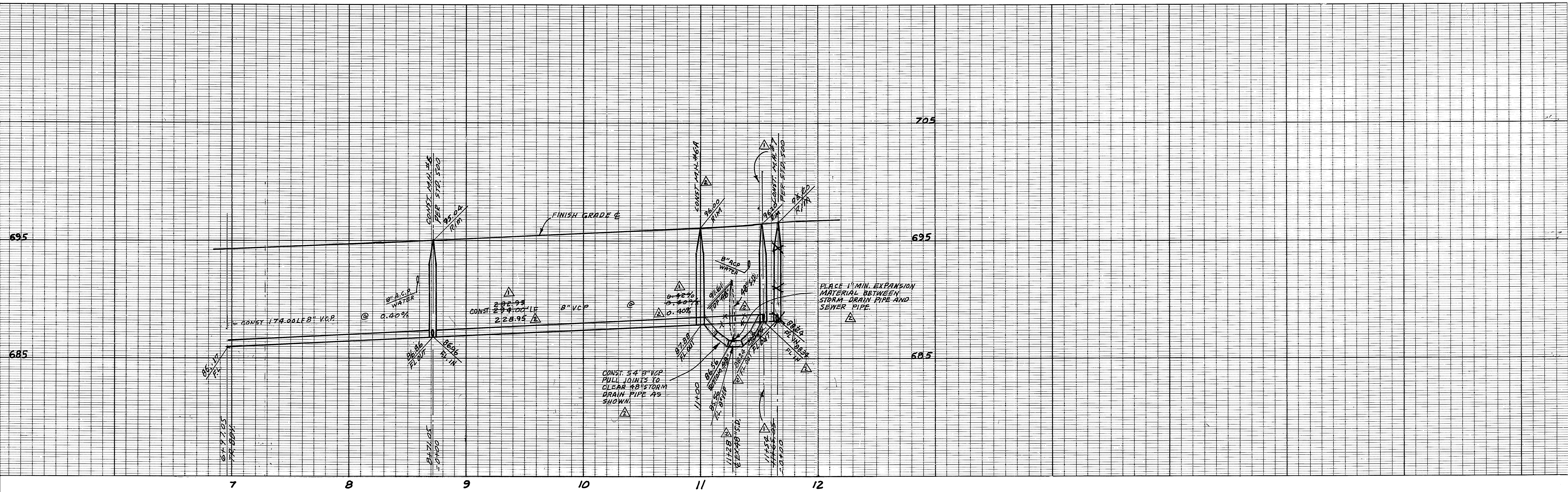
CITY OF RIVERSIDE, CALIFORNIA  
DEPARTMENT OF PUBLIC WORKS  
APPROVED BY: *William S. London*  
PRINCIPAL ENGINEER  
DATE: 5-21-86  
TRAFFIC DIVISION  
CHIEF PUB. WKS. ENGR.

SEWER PLAN AND PROFILE  
TRACT 20866-1  
SEWER EASEMENT  
SCALE: 1"=40' HORIZ - 1"=4' VERT

INDEXED D.A.  
ACCOUNT NO.  
DRAWING NUMBER  
S-1419  
SHEET 3 OF 8  
85-64-B

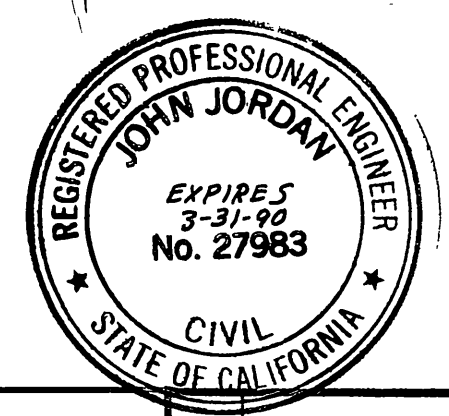
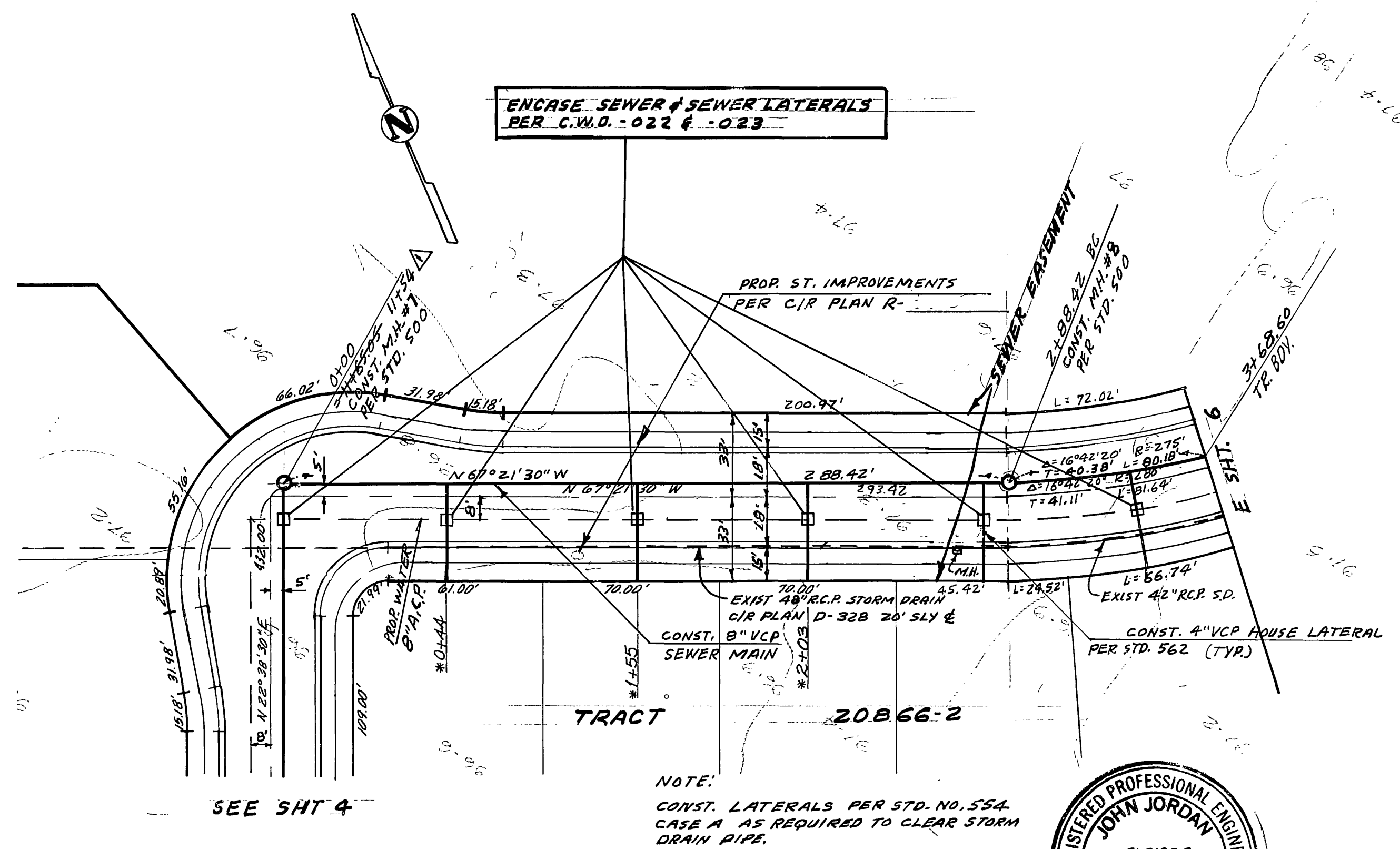
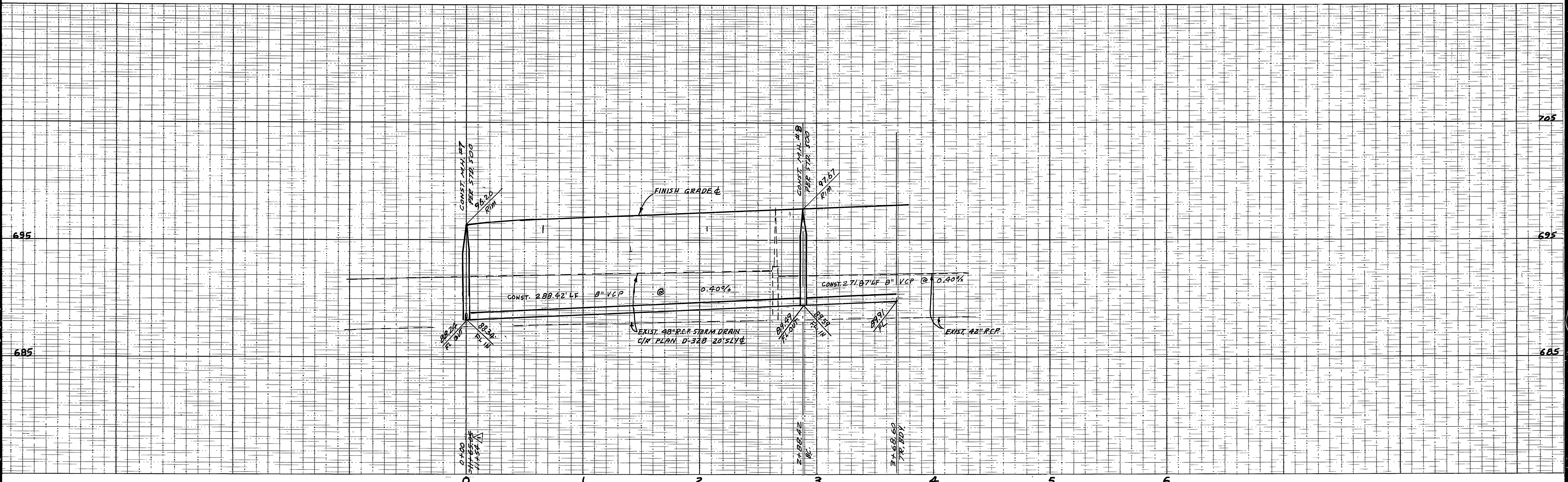
W.O. FOR: CONCORDIA DEV. F.B. 1053  
DESIGNED BY: B.E.L. DRAWN BY: B.E.L. CHECKED BY: B.E.L.





<b>CITY OF RIVERSIDE</b> WATER SYSTEM <i>David V. Lewis</i> SIGNED DATE 4-28-86		<b>BENCH MARK</b> ELEV. 697.682 BRASS DISK SET IN CONC. HEADWALL 1200'± W/4 FROM 3/4 PIERCE 13'± N/4 FROM E.A.T. 65.2' R/R STAMPED U.S.C.G.S. B.M. 138. 1924. RIV. O.M. 60-30-69		<b>ALBERT A. WEBB ASSOCIATES</b> CIVIL ENGINEERS 7738 N. CRAIG STREET RIVERSIDE, CALIFORNIA 92506-1070 R.E. No. 27983		<b>CITY OF RIVERSIDE, CALIFORNIA</b> DEPARTMENT OF PUBLIC WORKS		<b>SEWER PLAN AND PROFILE</b> TRACT 20866-1 SEWER EASEMENT		ACCOUNT No. <b>DRAWING NUMBER</b> 5-1419 <b>SHEET</b> 4 OF 8 85-64-B	
APPROVED BY <i>[Signature]</i> DATE 11-25-85 W.O. FOR CONCORDIA DEV F.B. 1053		DESIGNED BY BEL DRAWN BY BEL CHECKED BY BEL		APPROVED BY <i>[Signature]</i> DATE 5-21-86 PRINCIPAL ENGINEER PARK DEPARTMENT TRAFFIC DIVISION CHIEF PUB. WKS. ENGR.		REVISIONS MARK REVISIONS APPR. DATE Δ Added M.H. 8" VCP under 48" S.D. 6-5-86 BEL WUE 4/9/86 Δ Revised STA. M.H. 78 Grade 5-28-86 BEL WUE 4/9/86		SCALE: 1"=40' HORIZ. - 1"=4' VERT		INDEXED D.A. *AS BUILT 7/5/90	





CITY OF RIVERSIDE  
WATER SYSTEM  
SIGNED: *David V. Garcia*  
DATE: 4-28-86

BENCH MARK ELEV. 697.682  
BRASS DISK SET IN CONC. HEADWALL 1200'  
W/1/4 FROM & PIERCE 13' 1/4 FROM & A.T.  
& S. A. R. J. STAMPED U.S.C. & G.S. B.M. 138  
1924 - RIV. B.M. 601-30-69

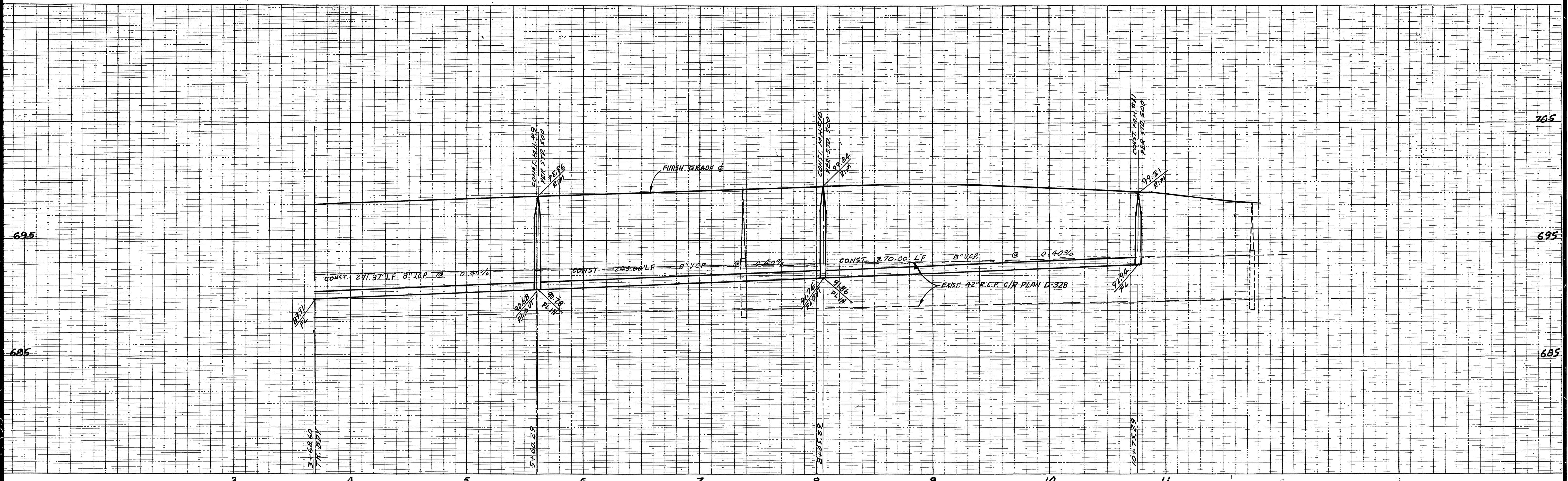
ALBERT A. WEBB ASSOCIATES  
CIVIL ENGINEERS  
3782 MCGRAY STREET  
RIVERSIDE, CALIFORNIA  
(714) 686-1070  
APPROVED BY: *[Signature]* DATE: 11-25-85  
R.E. No. 27983

DESIGNED BY BEL DRAWN BY BEL CHECKED BY BEL  
REVISIONS: Revised sta MH #7 5-28-86 BEL RJK 4/7/86

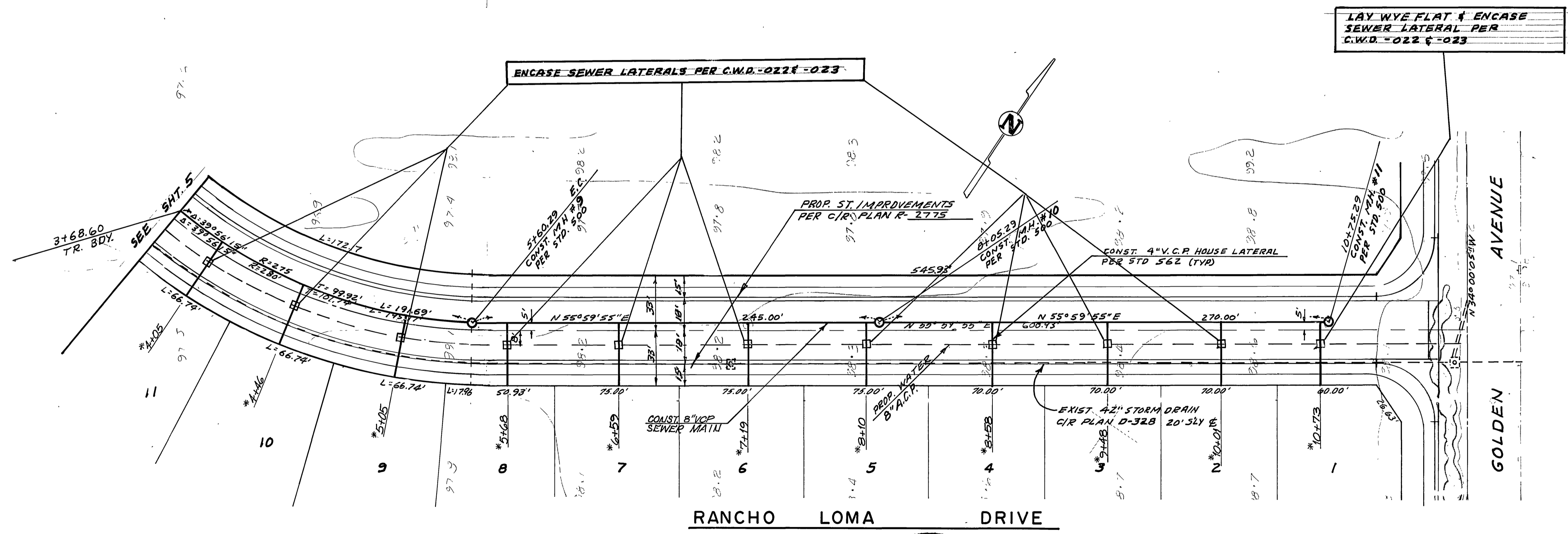
CITY OF RIVERSIDE, CALIFORNIA  
DEPARTMENT OF PUBLIC WORKS  
APPROVED BY: *[Signature]* DATE: 5-21-86  
DIRECTOR OF PUBLIC WORKS

SEWER PLAN AND PROFILE  
TRACT 20866-1  
SEWER EASEMENT  
ACCOUNT No. INDEXED O.A.  
DRAWING NUMBER: 51419  
SHEET 5 OF 8  
SCALE: 1"=40' HORIZ. 1"=4' VERT





TRACT 20866-2



NOTE:  
CONST. LATERALS PER STD. NO. 554  
CASE A AS REQUIRED TO CLEAR STORM  
DRAIN PIPE.



ALBERT A. WEBB ASSOCIATES  
CIVIL ENGINEERS  
3708 THE GARDEN STREET  
RIVERSIDE, CALIFORNIA  
92506-1070  
APPROVED BY: [Signature] DATE: 11-26-85  
R.E. No. 27983  
W.O. FOR: CONCORDIA DEV. F.B. 1053

CITY OF RIVERSIDE, CALIFORNIA  
DEPARTMENT OF PUBLIC WORKS  
APPROVED BY: [Signature] DATE: 5-21-86  
WILLIAM D. HANSEN  
DIRECTOR OF PUBLIC WORKS

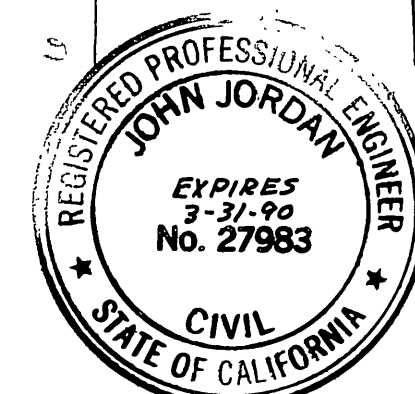
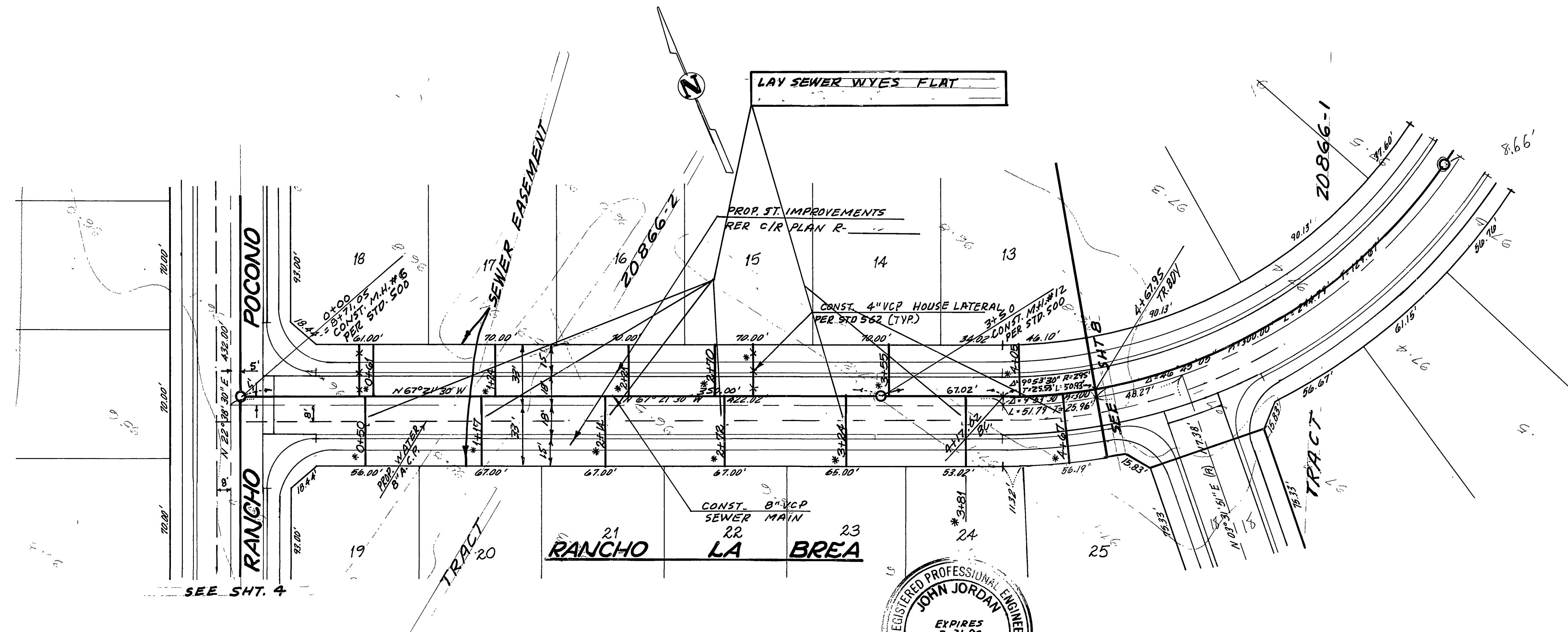
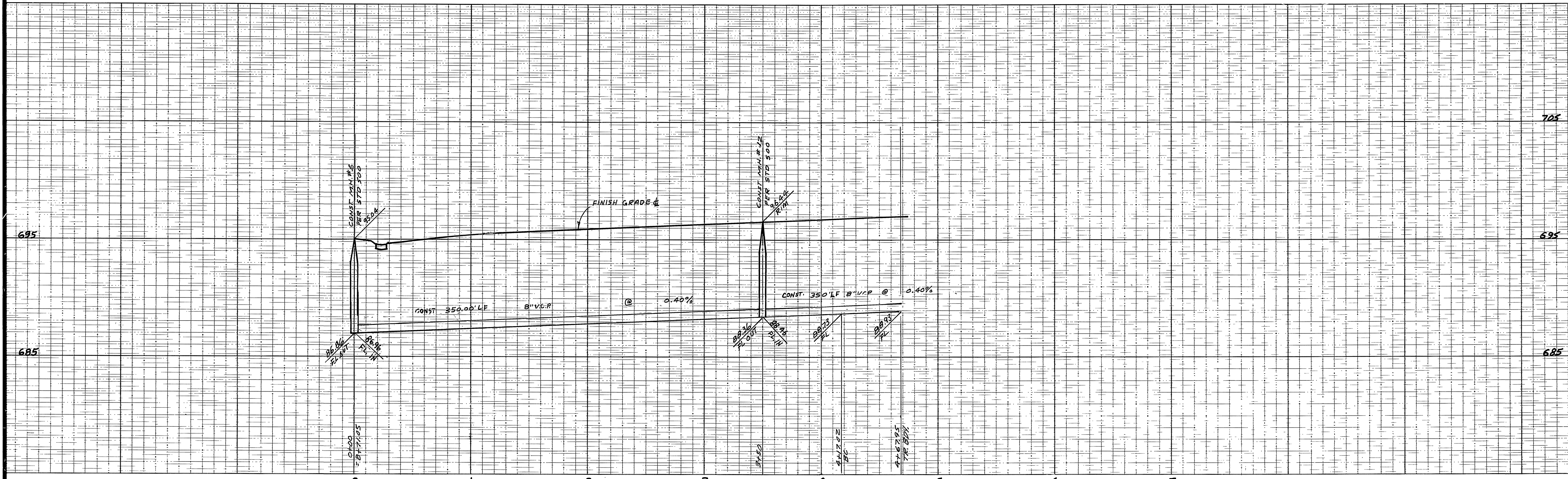
SEWER PLAN AND PROFILE  
TRACT 20866-1  
RANCHO LOMA DRIVE  
SCALE: 1" = 40' HORIZ. - 1" = 4' VERT.

ACCOUNT No. 51419  
DRAWING NUMBER 51419  
SHEET 6 OF 9  
85-64-B

CITY OF RIVERSIDE  
WATER SYSTEM  
[Signature] DATE: 1-28-86

BENCH MARK ELEV 697.682  
BRASS DISK SET IN CONC. HEADWALL 1200'  
W/4" FROM E. PIERCE 13" N/4" FROM S.A.T.  
E.S.F. R.R. STAMPED U.S.C. & G.S. B.M. 13B  
1924 - R.V. B.M. 601-30-69





CITY OF RIVERSIDE  
WATER SYSTEM  
David V. Garcia  
SIGNED  
4-28-86  
DATE

BENCH MARK ELEV. 697.602  
BRASS DISK SET IN CONG. NEAR DWALL 1200\"/>

ALBERT A. WEBB ASSOCIATES  
CIVIL ENGINEERS  
3728 MERCURY STREET  
RIVERSIDE, CALIFORNIA  
(714) 686-1070  
APPROVED BY: JOHN JORDAN  
DATE: 11-25-85  
R.E. No. 27983

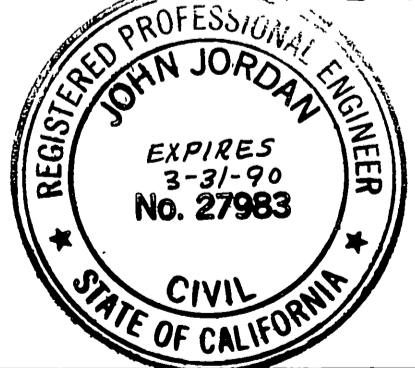
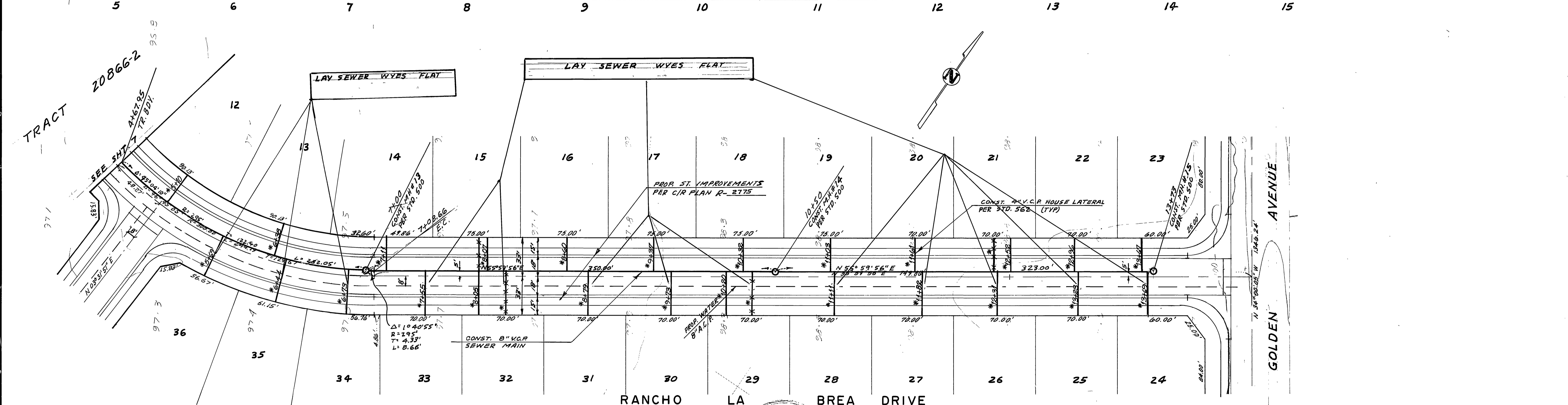
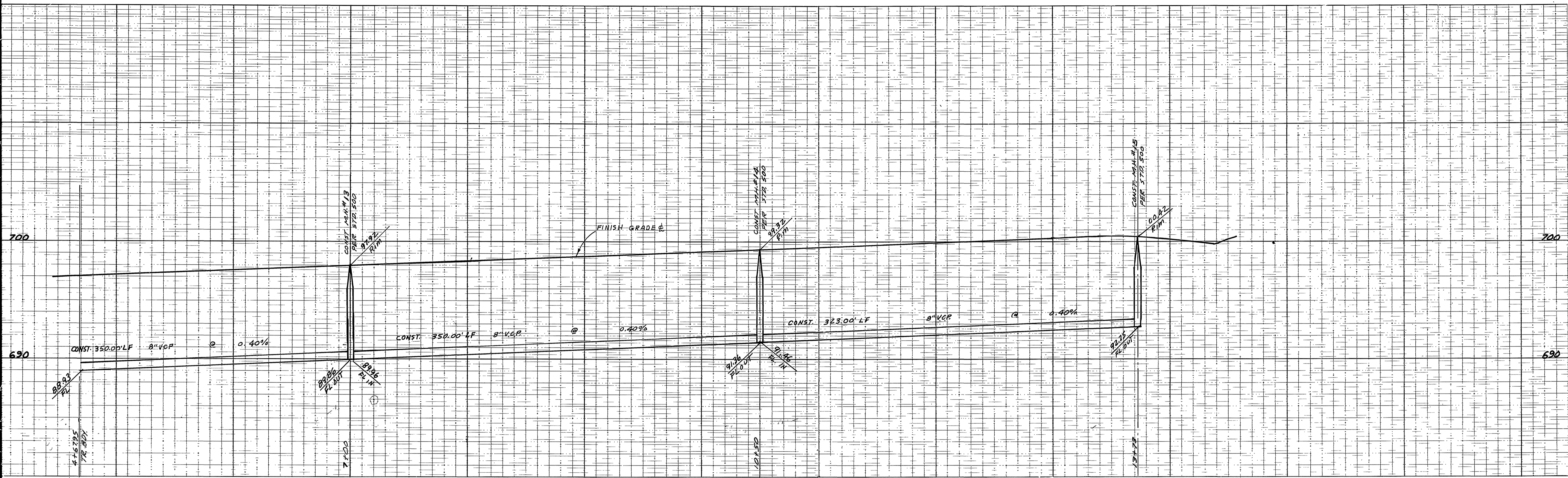
MARK REVISIONS  
APPR. DATE  
DESIGNED BY: BEL  
DRAWN BY: BEL  
CHECKED BY: BEL

CITY OF RIVERSIDE, CALIFORNIA  
DEPARTMENT OF PUBLIC WORKS  
APPROVED BY: [Signature]  
DATE: 5-21-86

SEWER PLAN AND PROFILE  
TRACT 20866-2  
SEWER EASEMENT  
SCALE: 1" = 40' HORIZ - 1" = 4' VERT.

ACCOUNT No.  
DRAWING NUMBER  
S 1419  
SHEET 7 OF 8  
INDEXED DA.  
85-64-B





<b>CITY OF RIVERSIDE</b> WATER SYSTEM APPROVED BY: <i>David V. Davis</i> SIGNED: _____ DATE: 4-28-86	BENCH MARK ELEV. 697.682 BRASS DISK SET IN CONC. HEADWALL 1200' W/4 FROM & PIERCE 18" x 14" FROM & A.T. 65.5' R/R STAMPED U.S.C. & G.S. B.M. J38, 1924. R.N. B.M. 601-30-69	ALBERT A. WEBB ASSOCIATES CIVIL ENGINEERS 3788 MICHIGAN STREET RIVERSIDE, CALIFORNIA (714) 686-1872 APPROVED BY: <i>John Jordan</i> DATE: 11-25-85 R.E. No. 27983	CITY OF RIVERSIDE, CALIFORNIA DEPARTMENT OF PUBLIC WORKS APPROVED BY: _____ BY: _____ DATE: _____ PRINCIPAL ENGINEER PARK DEPARTMENT TRAFFIC DIVISION CHIEF PUB. WKS. ENGR.	SEWER PLAN AND PROFILE TRACT 20866-1 RANCHO LA BREA DR. APPROVED BY: <i>William D. Gardner</i> DIRECTOR OF PUBLIC WORKS DATE: 5-21-86	ACCOUNT No. _____ DRAWING NUMBER <b>5-1419</b>
					SHEET <b>8</b> OF <b>8</b> 85-64-B

SCALE: 1" = 40' HORIZ. - 1" = 4' VERT.