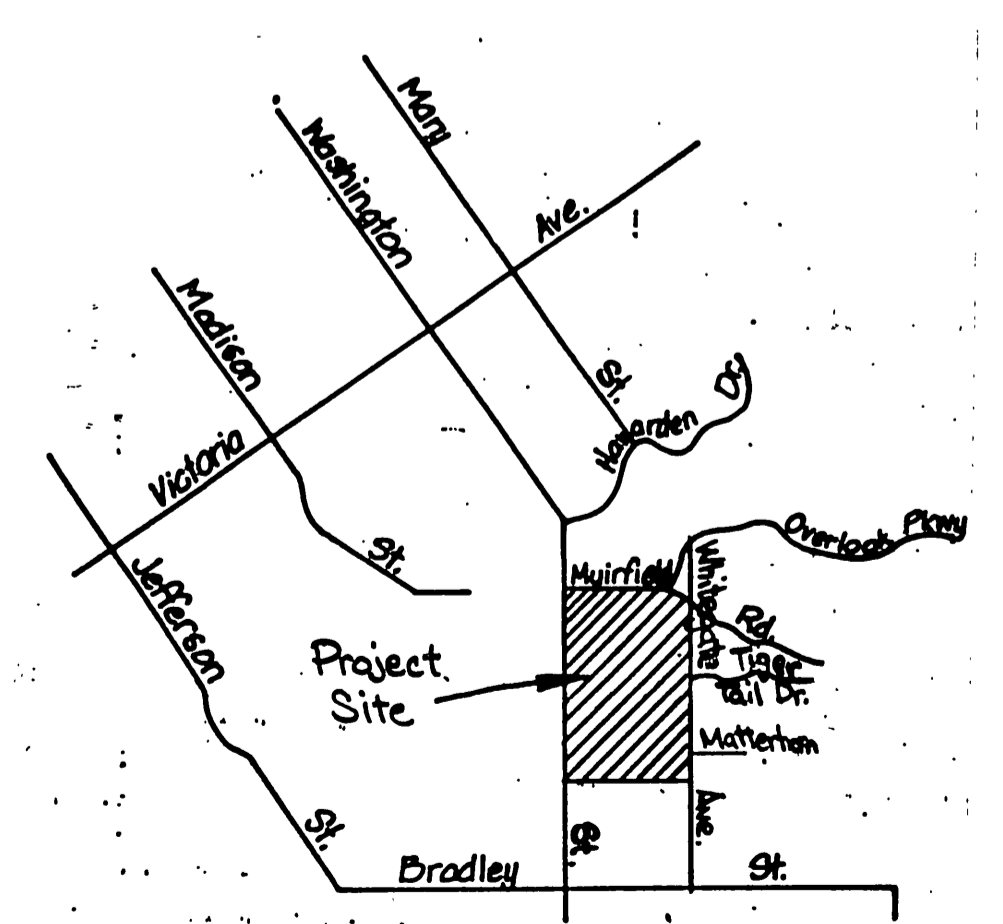


INDEX MAP
SCALE: 1" = 200'

- GENERAL NOTES**
- IT SHALL BE THE RESPONSIBILITY OF THE CONTRACTOR TO CLEAR THE RIGHT OF WAY IN ACCORDANCE WITH THE PROVISIONS OF LAW AS IT AFFECTS EACH UTILITY INCLUDING IRRIGATION LINES AND APPURTENANCES AND AT NO COST TO THE CITY.
 - CONSTRUCTION SHALL BE IN ACCORDANCE WITH THE CITY OF RIVERSIDE DEPARTMENT OF PUBLIC WORKS, STANDARD DRAWINGS, STANDARD DRAWING NO. 10, AND THE STANDARD SPECIFICATIONS FOR PUBLIC WORKS CONSTRUCTION, CURRENT EDITION.
 - THE PRIVATE ENGINEER SIGNING THESE PLANS IS RESPONSIBLE FOR ASSURING THE ACCURACY AND ACCEPTABILITY OF THE WORK HEREON. IN THE EVENT OF DISCREPANCIES ARISING DURING CONSTRUCTION, THE PRIVATE ENGINEER SHALL BE RESPONSIBLE FOR DETERMINING AN ACCEPTABLE SOLUTION AND REVISING THE PLANS FOR APPROVAL BY THE CITY.
 - THE DEVELOPER SHALL BE RESPONSIBLE FOR PRESERVING OR RE-ESTABLISHING AND REFERENCING SURVEY MONUMENTS DESTROYED, DISTURBED OR BURIED AS A RESULT OF CONSTRUCTION SHOWN HEREON.
 - ALL FLAGGED ELEVATIONS SHALL BE STAKED IN THE FIELD BY THE PRIVATE ENGINEER.
 - THE CONTRACTOR SHALL CALL IN A LOCATION REQUEST TO THE UNDERGROUND SERVICE ALERT (USA), PHONE NO. 1-800-422-4133, TWO WORKING DAYS BEFORE DIGGING. NO CONSTRUCTION PERMIT WILL BE ISSUED BY THE PUBLIC WORKS DEPARTMENT INVOLVING EXCAVATION FOR UNDERGROUND FACILITIES UNLESS THE APPLICANT HAS BEEN PROVIDED AN INQUIRY IDENTIFICATION NUMBER BY U.S.A.
 - CONTRACTOR IS TO VERIFY EXISTING SEWER ELEVATION PRIOR TO CONSTRUCTION.
 - LOCATION OF LATERALS TO BE DETERMINED IN THE FIELD AT THE DIRECTION OF THE OWNER. AVOID CONFLICT WITH PROPOSED AND/OR EXISTING FACILITIES.
 - NO EXISTING FLOOR ELEVATION SHALL BE LESS THAN 4' ABOVE THE SEWER FLOW LINE AT POINT OF CONNECTION WITHOUT HAVING A PROPER BACKWATER VALVE INSTALLED IN THE LATERAL.
 - A PLUG SHALL BE INSTALLED AND WILL REMAIN IN PLACE WHERE THE NEW SEWER CONNECTS WITH THE EXISTING SEWER UNTIL THE NEW SEWER IS ACCEPTED BY THE CITY.
 - THE SEWER CONTRACTOR SHALL ADJUST MANHOLES TO FINAL GRADE AFTER PAVING IS COMPLETED.

- CONSTRUCTION NOTES**
- CONSTRUCT MANHOLE PER CITY STD. 500.
 - CONSTRUCT 12" V.C.P. SEWER MAIN.
 - CONSTRUCT 10" V.C.P. SEWER MAIN.
 - CONSTRUCT 8" V.C.P. SEWER MAIN.
 - CONSTRUCT 4" V.C.P. SEWER LATERAL PER CITY STD. 564.
 - PLUG
 - CONSTRUCT TEMPORARY CLEANOUT PER CITY STD. 560.



VICINITY MAP
N.T.S.



GABEL, COOK & BECKLUND
647 North Main Street, Suite 1-B, Riverside, Calif. 92501
Telephone 714 788-8072

APPROVED BY: *[Signature]*
DATE: *8/22/86*

BENCH MARK: PK. nail 8" top in top of conc. vault on West side of Washington St. 15' North of E Muirfield Rd. projected. C/R B.M. F6-G. Elevation: 1029.593

MARK	REVISIONS	APPR. DATE

DESIGNED BY: JLE. DRAWN BY: J.M.M. CHECKED BY: W.D.G.

CITY OF RIVERSIDE
PUBLIC WORKS DEPARTMENT

APPROVED BY	DATE	BY	APPROVED BY
PRINCIPAL ENGINEER	<i>8/22/86</i>	<i>[Signature]</i>	<i>[Signature]</i>
PLANK DEPARTMENT			PUBLIC WORKS DIRECTOR
TRAFFIC DIVISION			
CHIEF P.W. ENGINEER			

DATE: *8-26-86*

SEWER IMPROVEMENTS
PLAN & PROFILE
TRACT 21010-1 & 21010
TITLE SHEET

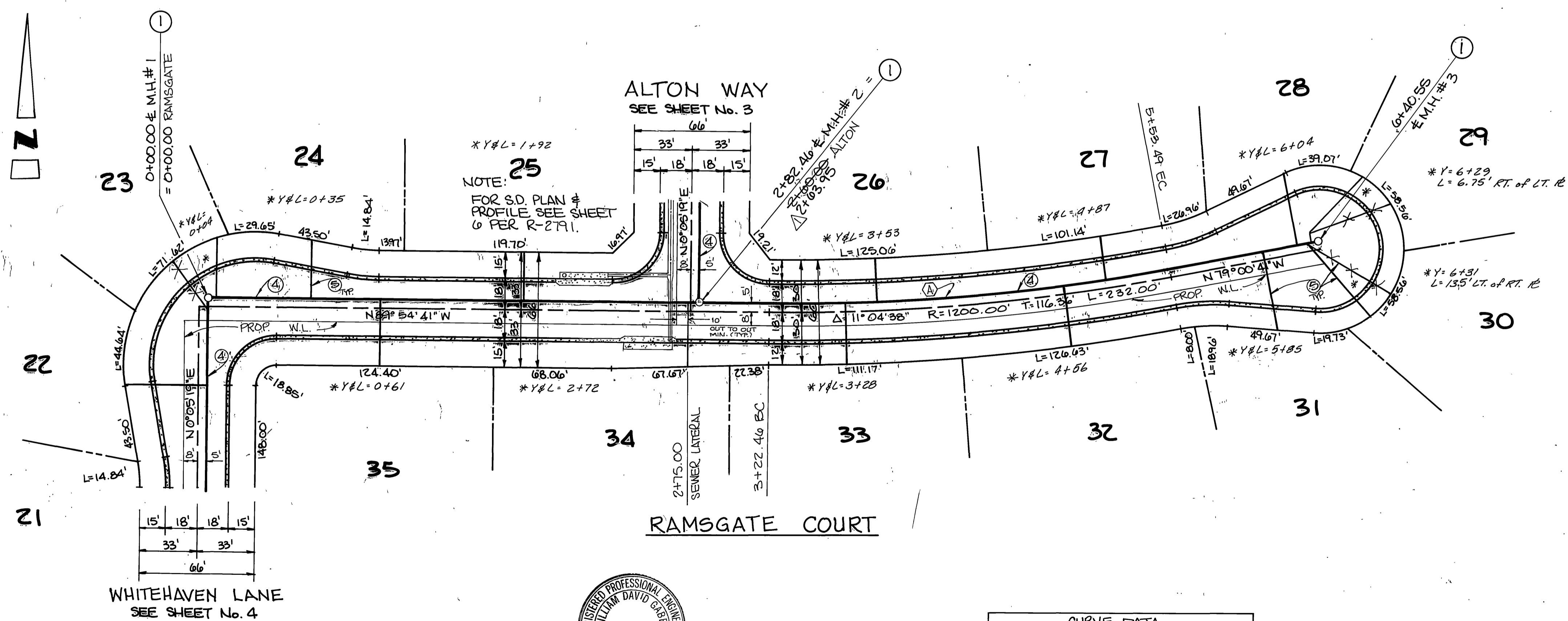
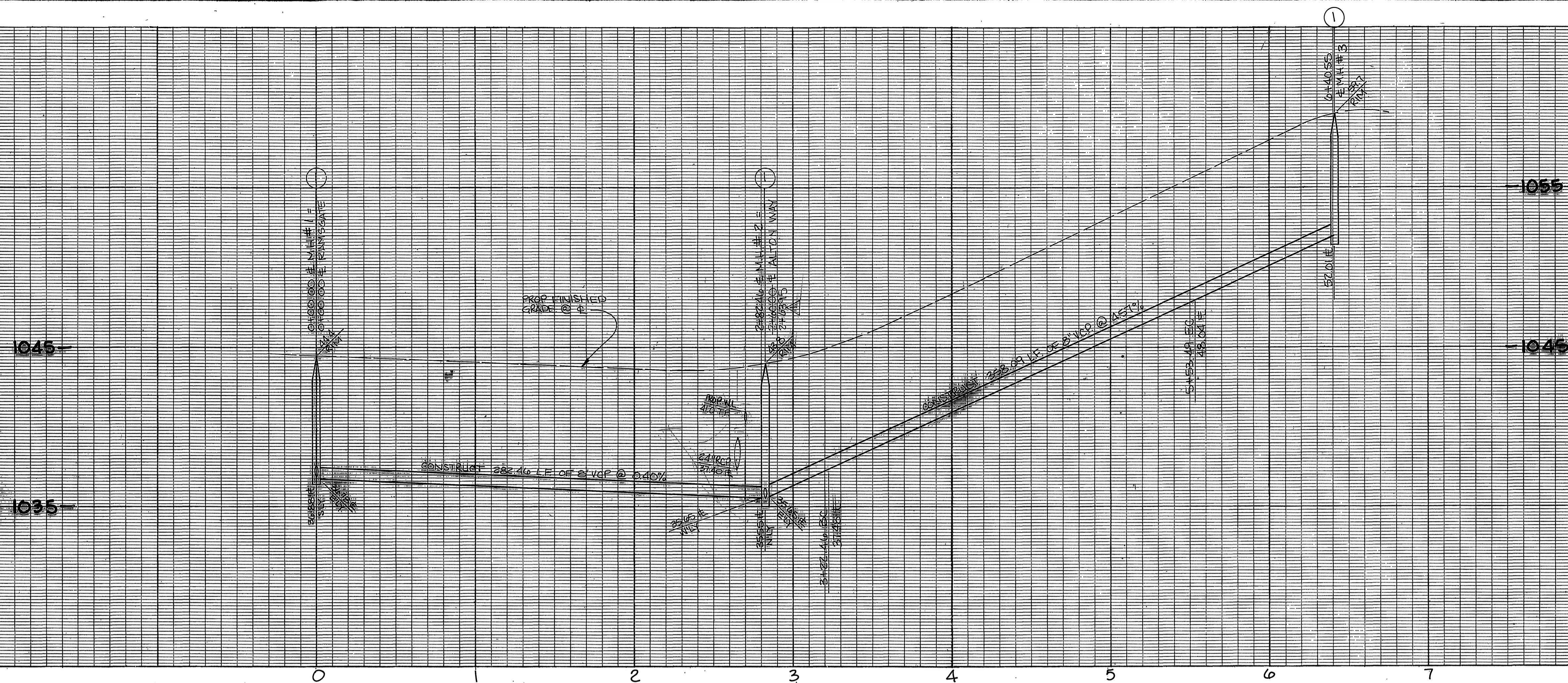
SCALE: AS SHOWN

INDEXED BY CD

ACCOUNT NO. **S-1427**

SHEET **1** OF **11**

86-662

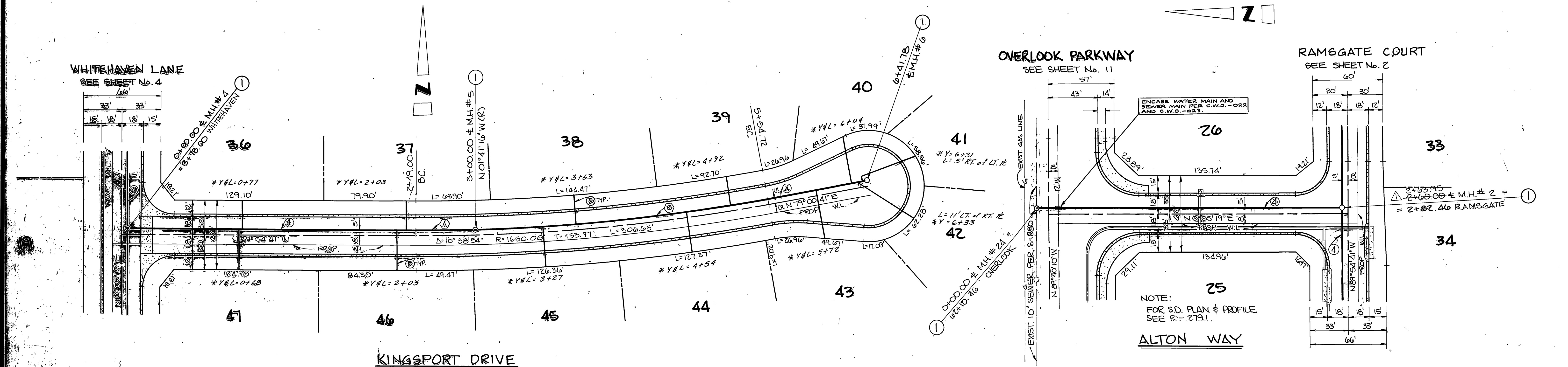
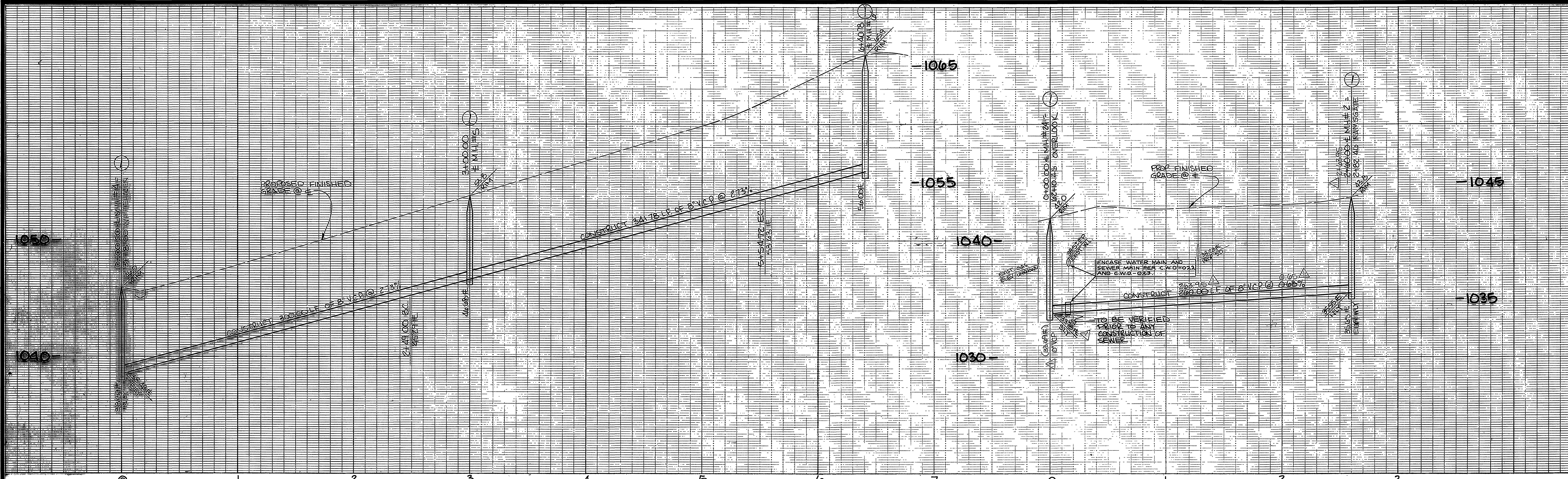


NOTE:
25
FOR S.D. PLAN &
PROFILE SEE SHEET
6 PER R-27A1.

CURVE DATA				
Station	Δ	R	L	T
A	11°04'38"	1195.00'	231.03'	115.88'

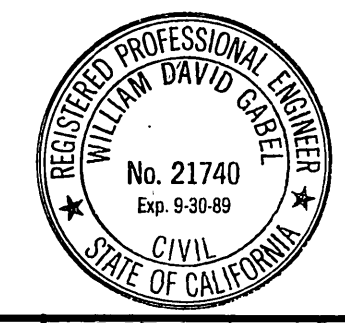


CITY OF RIVERSIDE WATER SYSTEM APPROVED BY <i>David V. Garcia</i> 8-15-86	CITY OF RIVERSIDE APPROVED BY <i>[Signature]</i>	REVISED SEWER ON ALTON WAY DATE 8/27/86 DESIGNED BY J.L.E. DRAWN BY P.W.M. CHECKED BY J.L.G.	CITY OF RIVERSIDE PUBLIC WORKS DEPARTMENT APPROVED BY DATE 8-26-86	APPROVED BY <i>William D. Gardner</i> PUBLIC WORKS DIRECTOR	ACCOUNT NO. S-1427
			TRACT 21010-1 RAMSGATE COURT	SHEET 2 OF 2	

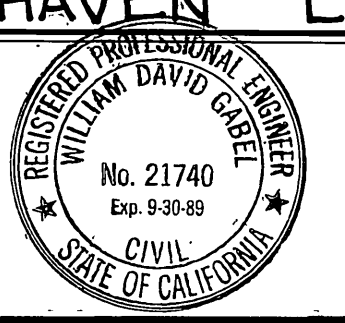
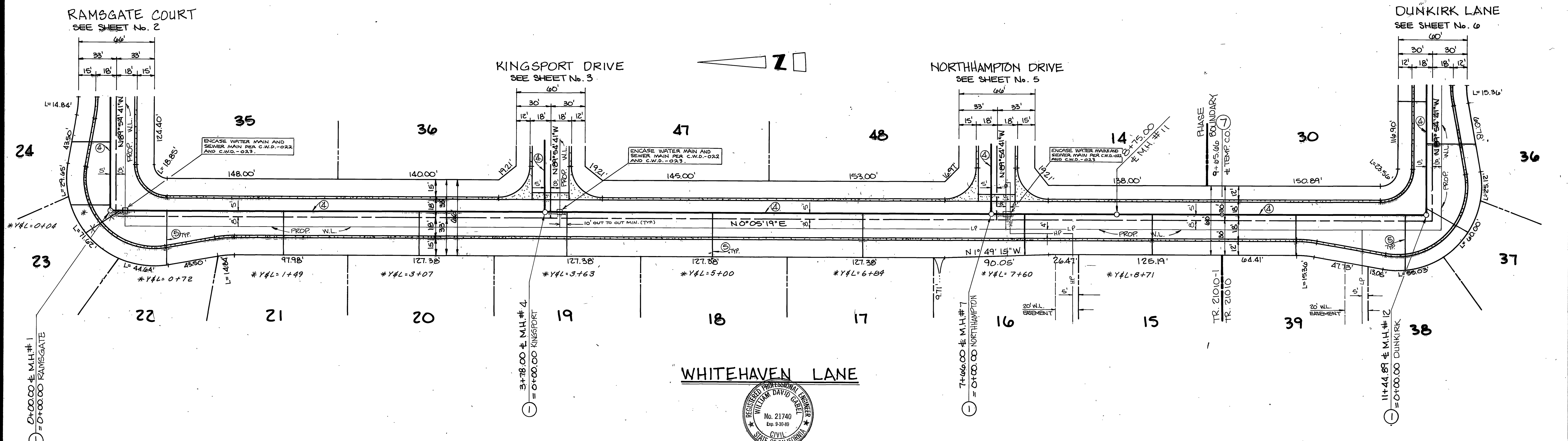
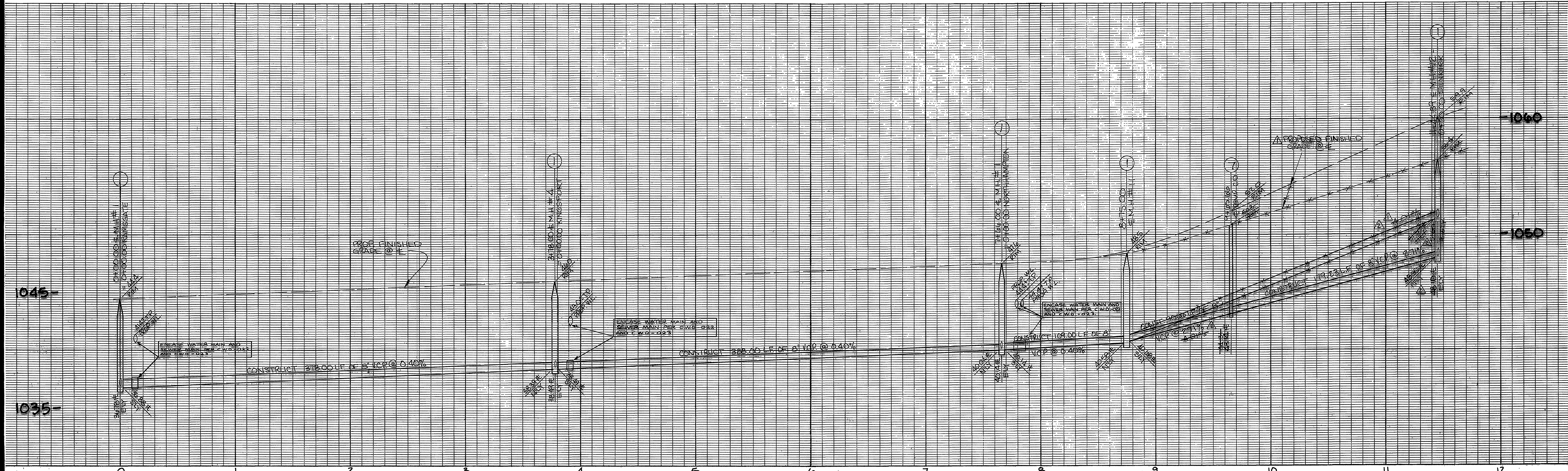


CURVE DATA

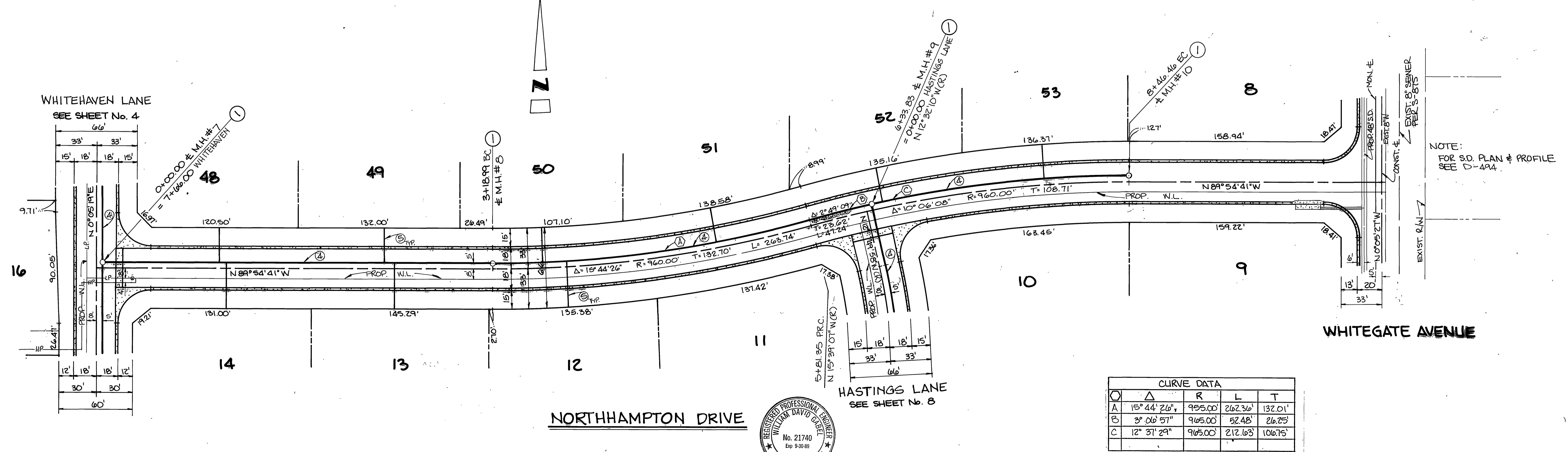
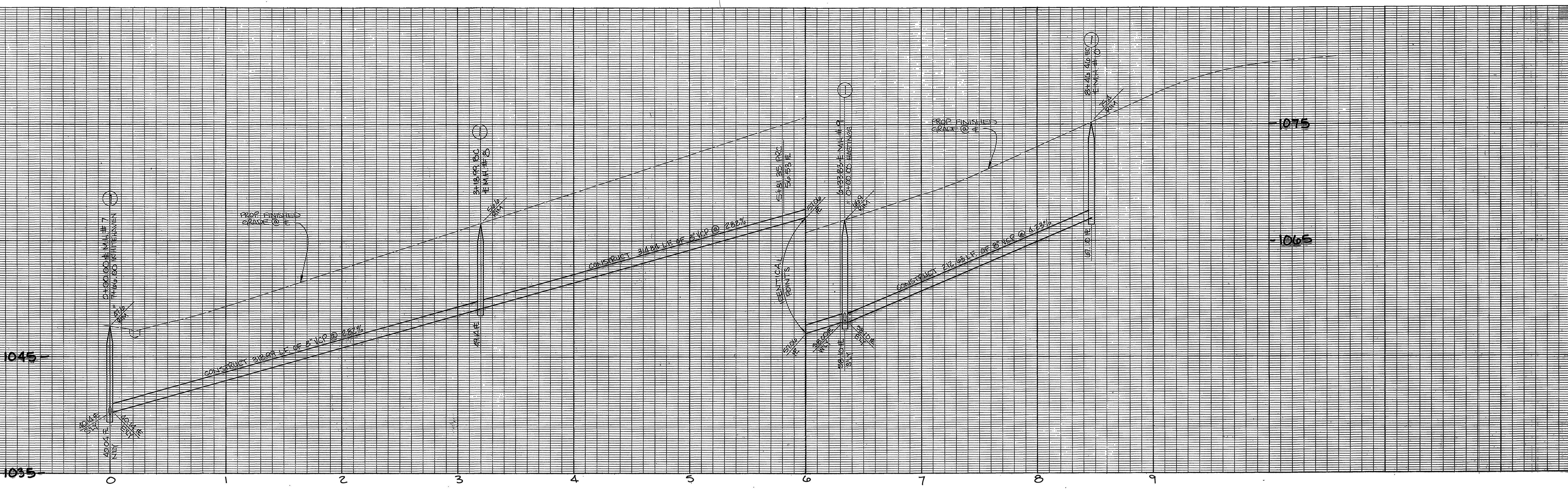
Curve	Δ	R	L	T
A	1° 46' 35"	1045.00'	51.00'	25.50'
B	8° 52' 19"	1045.00'	254.72'	127.62'



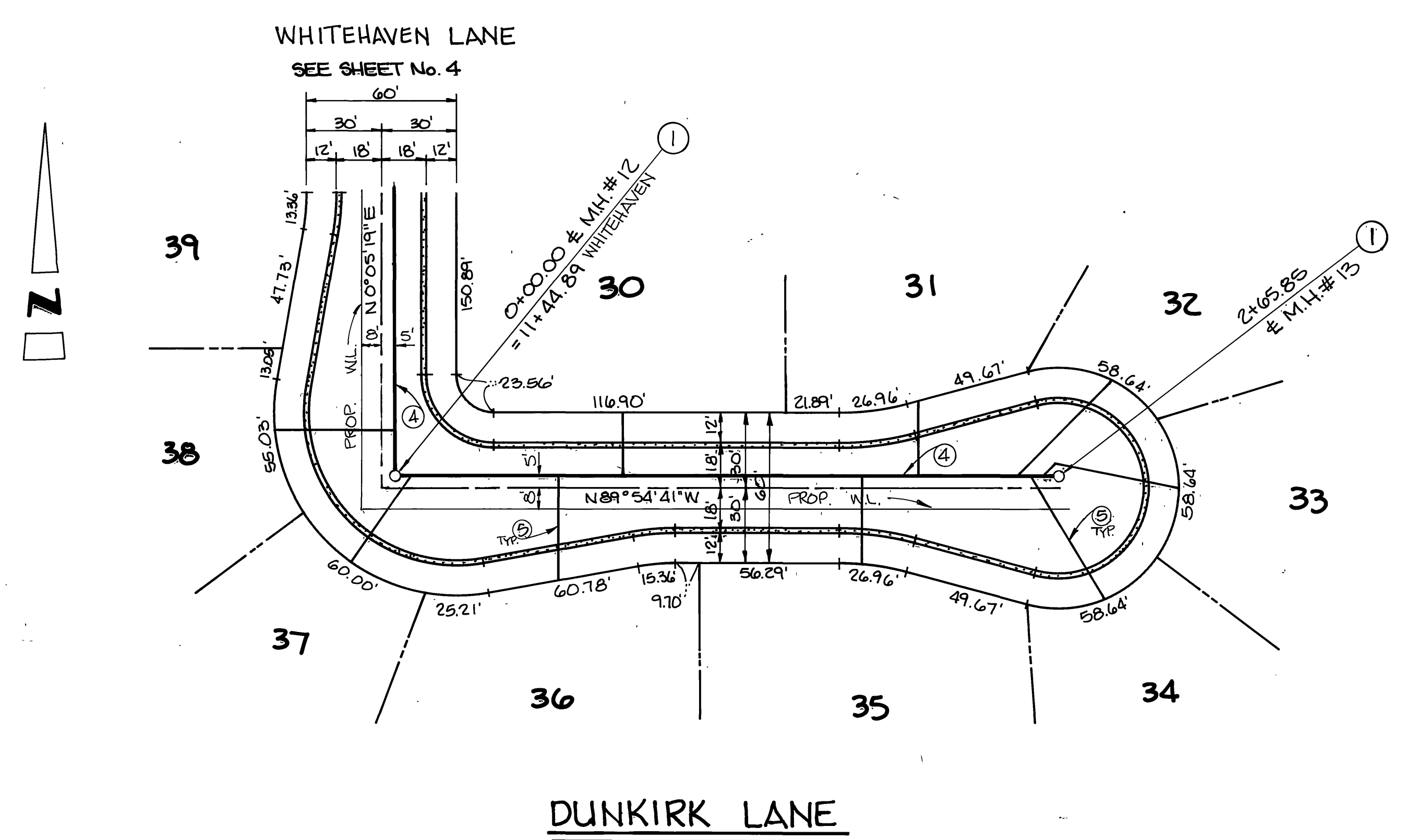
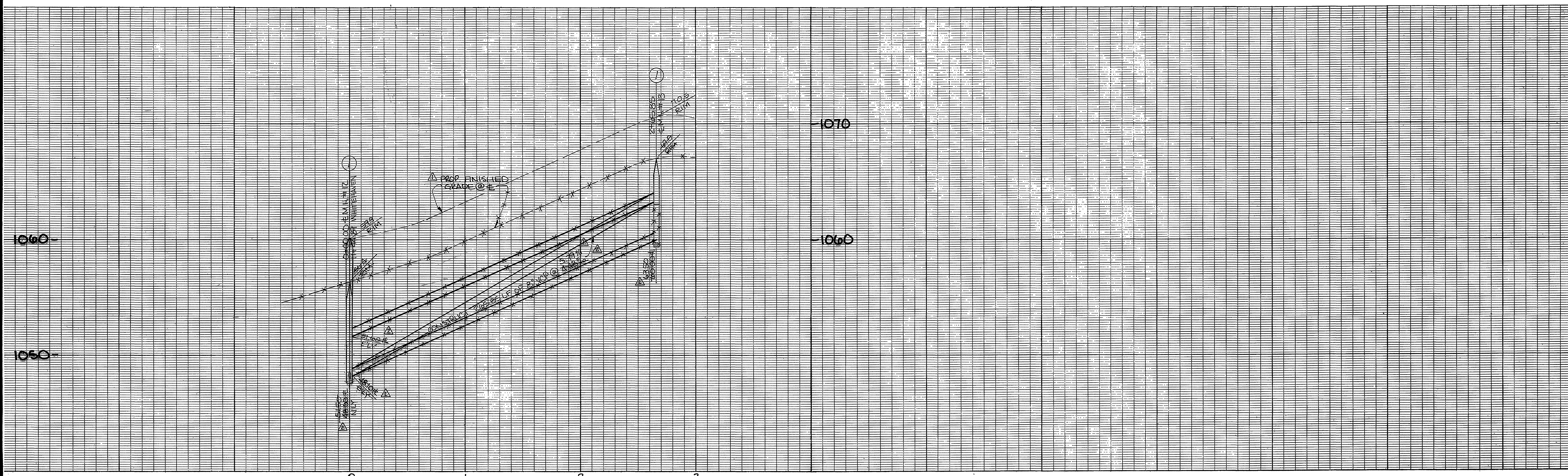
CITY OF RIVERSIDE WATER SYSTEM APPROVED BY: <i>[Signature]</i> DATED: 8-15-86	GABEL, COOK & BECKLUND ENGINEERS 21740 EXP. 9-30-89	CITY OF RIVERSIDE PUBLIC WORKS DEPARTMENT APPROVED BY: <i>[Signature]</i> DATE: 8-26-86	SEWER IMPROVEMENTS PLAN AND PROFILE TRACT 21010-1 KINGSFORT DRIVE & ALTON WAY SHEET 3 OF 3



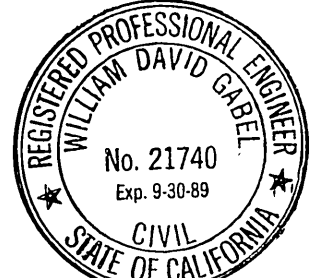
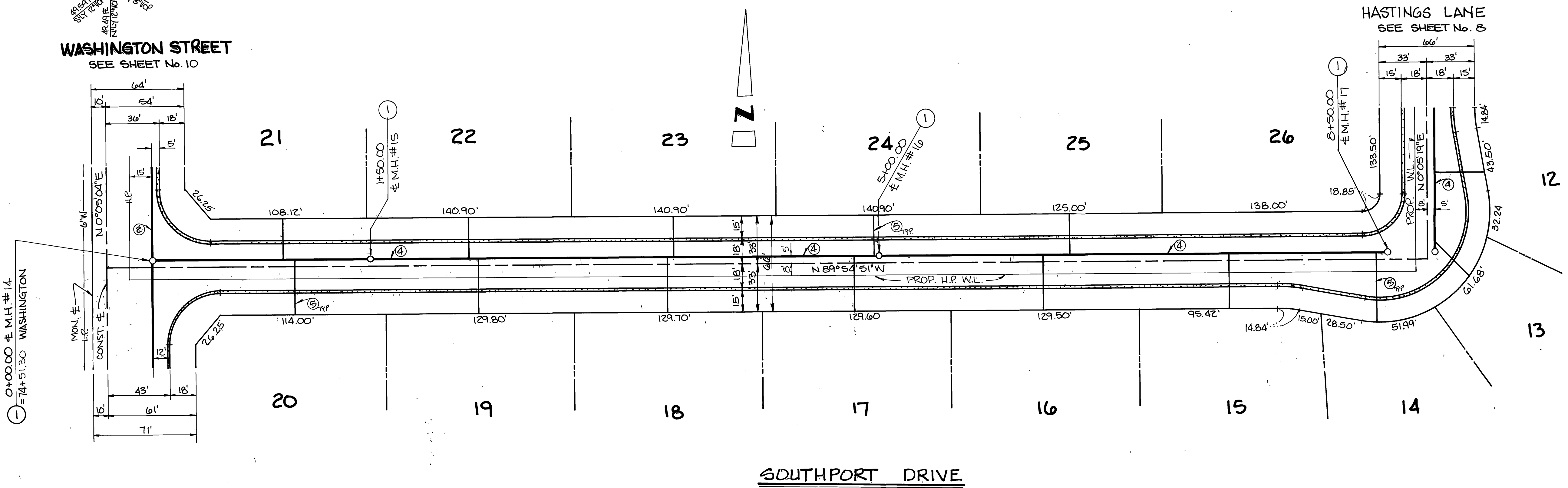
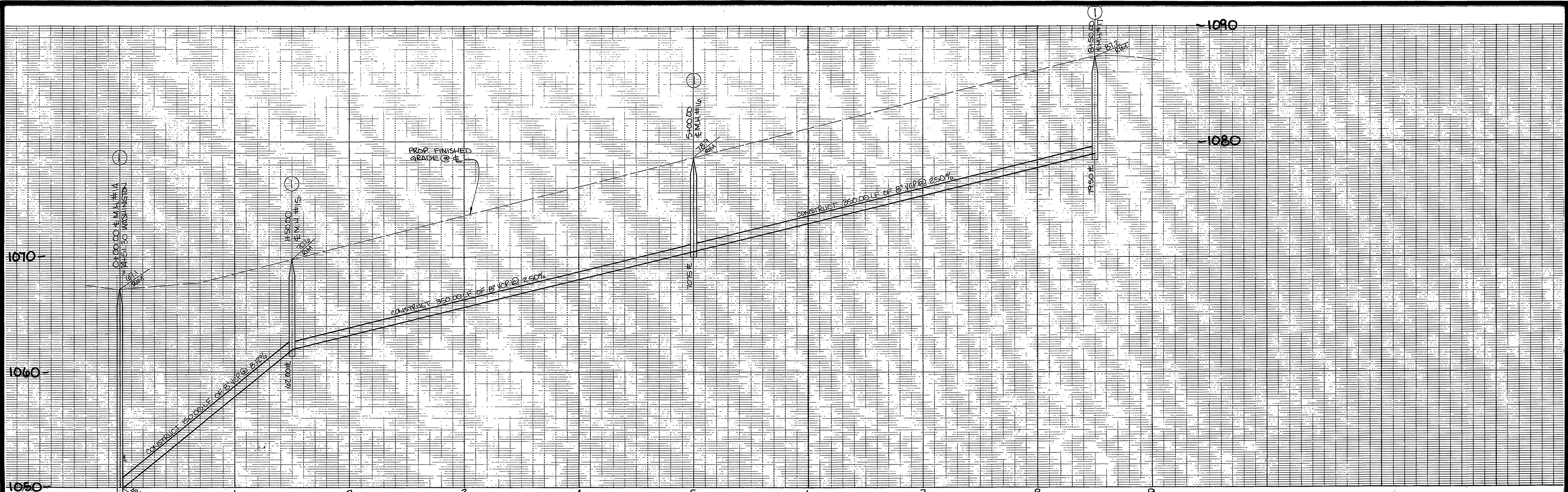
CITY OF RIVERSIDE WATER SYSTEM APPROVED BY: <i>David V. Lavin</i> 8-15-86 DATE: 8-15-86		CITY OF RIVERSIDE PUBLIC WORKS DEPARTMENT APPROVED BY: <i>William S. Sawyer</i> DATE: 8-26-86		INDEXED BY: CD ACCOUNT NO.: S-1427 SHEET: 4 OF 11 86-602
CITY OF RIVERSIDE WATER SYSTEM PROJECT: SEWER IMPROVEMENTS PLAN AND PROFILE TRACT 21010-1 & 21010 WHITEHAVEN LANE		HORIZ. SCALE: 1" = 40' VERT. SCALE: 1" = 4'		



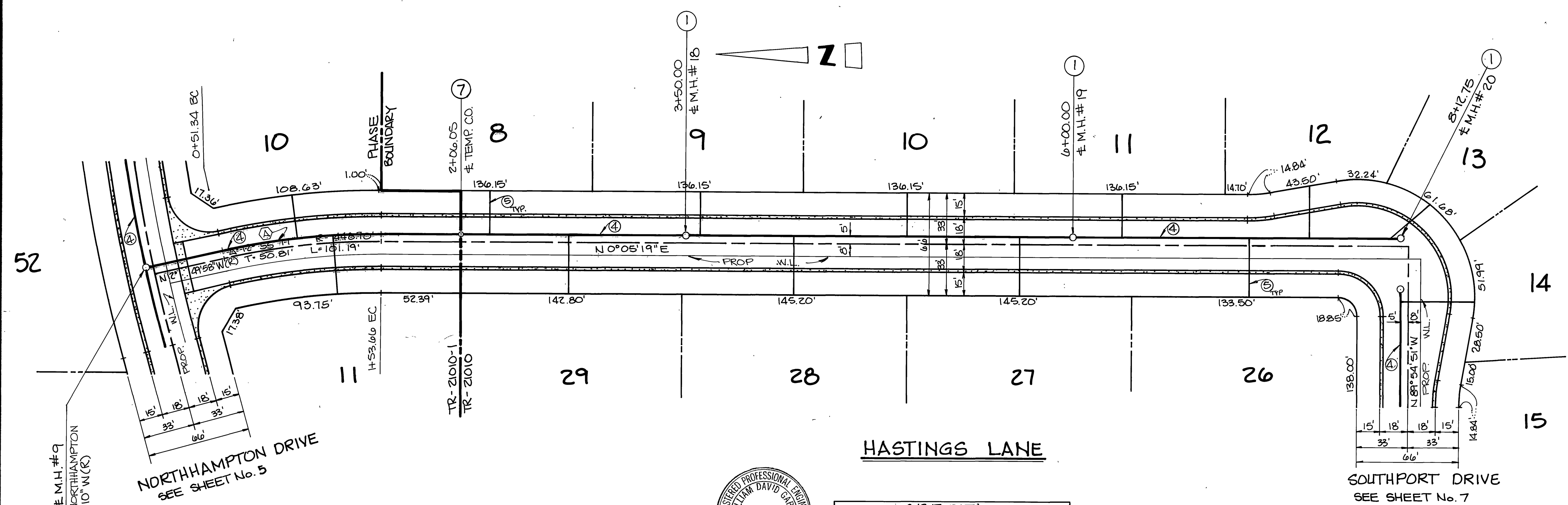
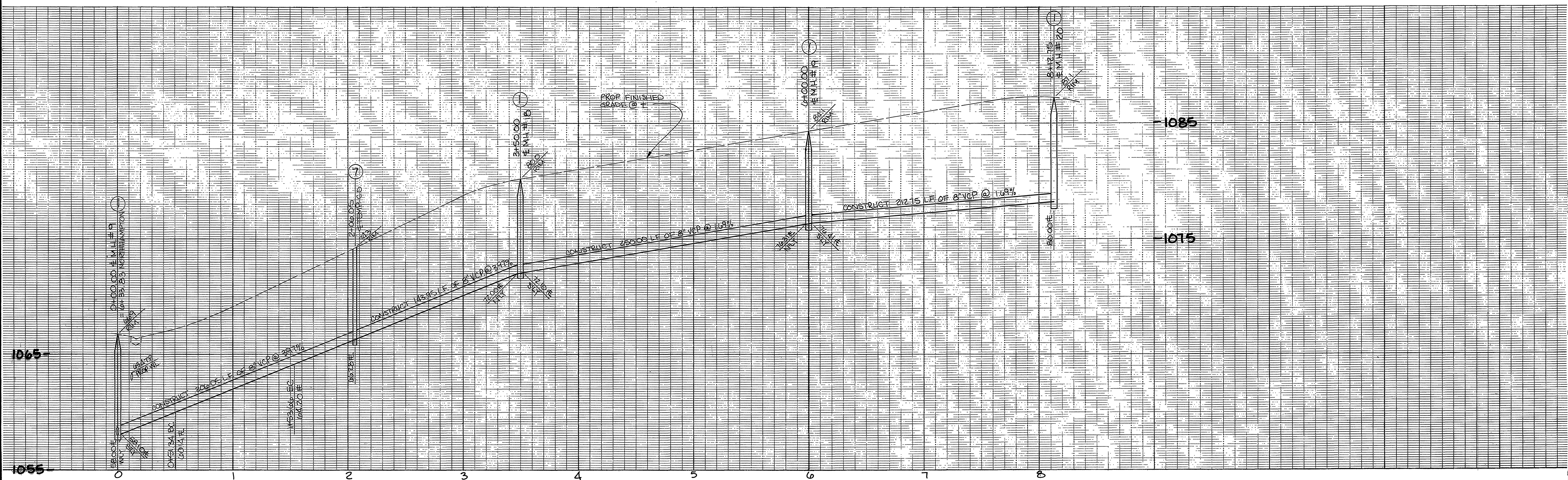
CITY OF RIVERSIDE WATER SYSTEM APPROVED BY: <i>David V. Kavin</i> DATE: 8-15-86	CABELL, COOK & BROWN ENGINEERS 11445 St. Elevation: 1029.593	CITY OF RIVERSIDE PUBLIC WORKS DEPARTMENT APPROVED BY: <i>William D. Gardner</i> DATE: 8-26-86	SEWER DEPARTMENT'S PLAN AND PROFILE TRACT 21010-1 NORTHAMPTON DRIVE HORIZ. SCALE: 1" = 40' VERT. SCALE: 1" = 4'	INDEXED BY:
				ACCOUNT NO.: S-1427 SHEET 5 OF 11 86-002



CITY OF RIVERSIDE WATER SYSTEM APPROVED BY: <i>Don V. Davis</i> DATE: 8-15-86	CARL COOK & BECKLUND ENGINEERS APPROVED BY: <i>[Signature]</i> DATE: 11-14-86 BENCH MARK: R.K. ngil @ top in top of conc. vault on West side of Washington St. 15' North of E Muirfield Rd. projected. C/R B.M. 56-9. Elevation: 1029.593	REVISIONS 1. REVISED SEWER GRADES 2. RANDED STREET & SEWER GRADES DESIGNED BY: JLE DRAWN BY: JNM CHECKED BY: WBG	CITY OF RIVERSIDE PUBLIC WORKS DEPARTMENT		SEWER IMPROVEMENTS PLAN AND PROFILE TRACT 21010 DUNKIRK LANE	ACCOUNT NO. S-1427 SHEET 6 of 11 86-602
			APPROVED BY: <i>[Signature]</i> DATE: 8-26-86	APPROVED BY: <i>William D. Gardner</i> PUBLIC WORKS DIRECTOR		



CITY OF RIVERSIDE WATER SYSTEM APPROVED BY: <i>David V. Lewis</i> DATE: 8-15-86	CASEL, COOK & BECKLUND OFFICE: 1100 N. GARDNER ST., RIVERSIDE, CALIF. 92507 APPROVED BY: <i>[Signature]</i> DATE: 8/22/86 BENCH MARK: R.K. nail & tag in top of conc. vault on West side of Washington St. 15' North of E Mulfield Rd. projected. C/R B.M. F6-G Elevation: 1029.993	CITY OF RIVERSIDE PUBLIC WORKS DEPARTMENT APPROVED BY: <i>[Signature]</i> DATE: 8-26-86 PUBLIC WORKS DIRECTOR	SEWER IMPROVEMENTS PLAN AND PROFILE TRACT 21010 SOUTHPORT DRIVE HORIZ. SCALE: 1" = 40' VERT. SCALE: 1" = 4'	INDEXED BY: CD
				ACCOUNT NO. S-1427 SHEET 7 OF 11 86-062

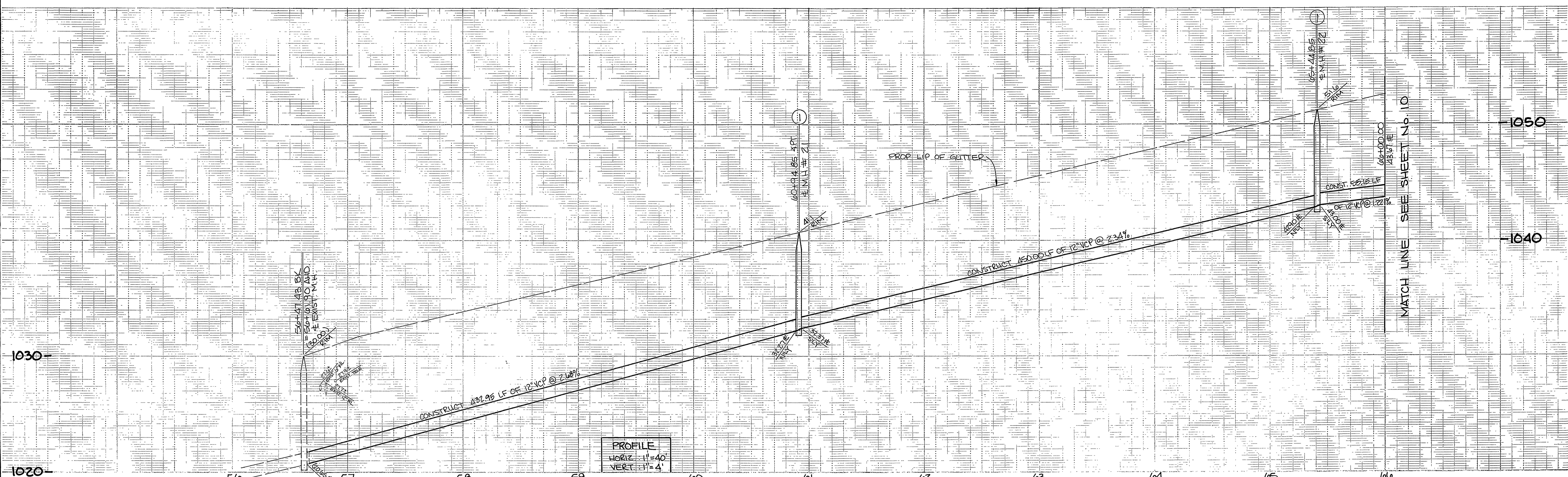


CURVE DATA

Symbol	R	L	T
○	12° 55' 17"	453.70'	102.32'
△			51.38'



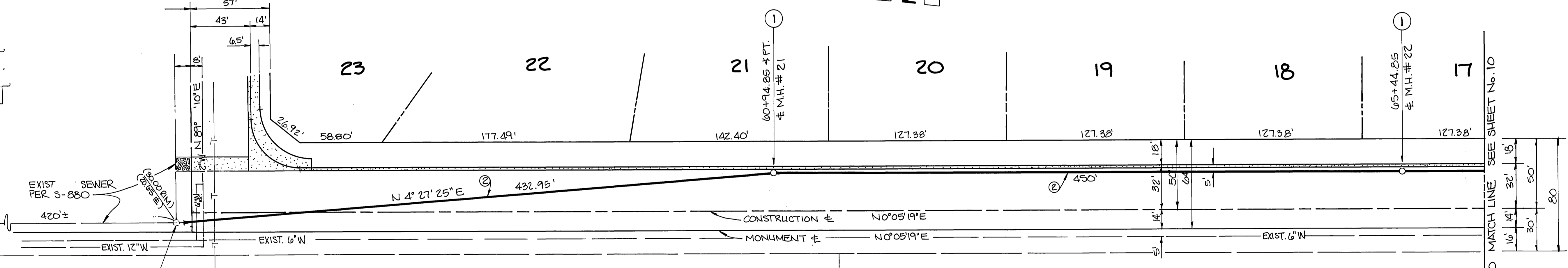
CITY OF RIVERSIDE WATER SYSTEM APPROVED BY: <i>David V. Garcia</i> DATED: 8-15-86	GABEL, COOK & BECKLUND 627 West Main Street, Suite 104, Riverside, Calif. 92501 Telephone 714-748-2992 APPROVED BY: <i>[Signature]</i> DATE: 11 AUG 86 BENCH MARK: P.K. nail & tag in top of conc. vault on West side of Washington St. 15' North of E Muirfield Rd. projected. C/R. S.M. PG-G Elevation: 1029.593	CITY OF RIVERSIDE PUBLIC WORKS DEPARTMENT APPROVED BY: <i>[Signature]</i> DATE: 8-26-86 CHIEF P.W. ENGINEER	SEWER IMPROVEMENTS PLAN AND PROFILE TRACT 21010-1 & 21010 HASTINGS LANE HORIZ. SCALE: 1" = 40' VERT. SCALE: 1" = 4'	INDEXED BY CD ACCOUNT NO. S-1427 SHEET 8 OF 11 86-662



PROFILE
 HORIZ: 1"=40'
 VERT: 1"=4'

OVERLOOK PARKWAY
 SEE SHEET No. 11

TENT.
 TRACT
 20111



50+47.43 BK.
 = 50+01.90 AHD.
 # EXIST. M.H.
 CONNECT TO EXIST.
 12" STUB.

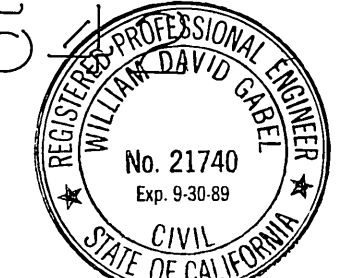
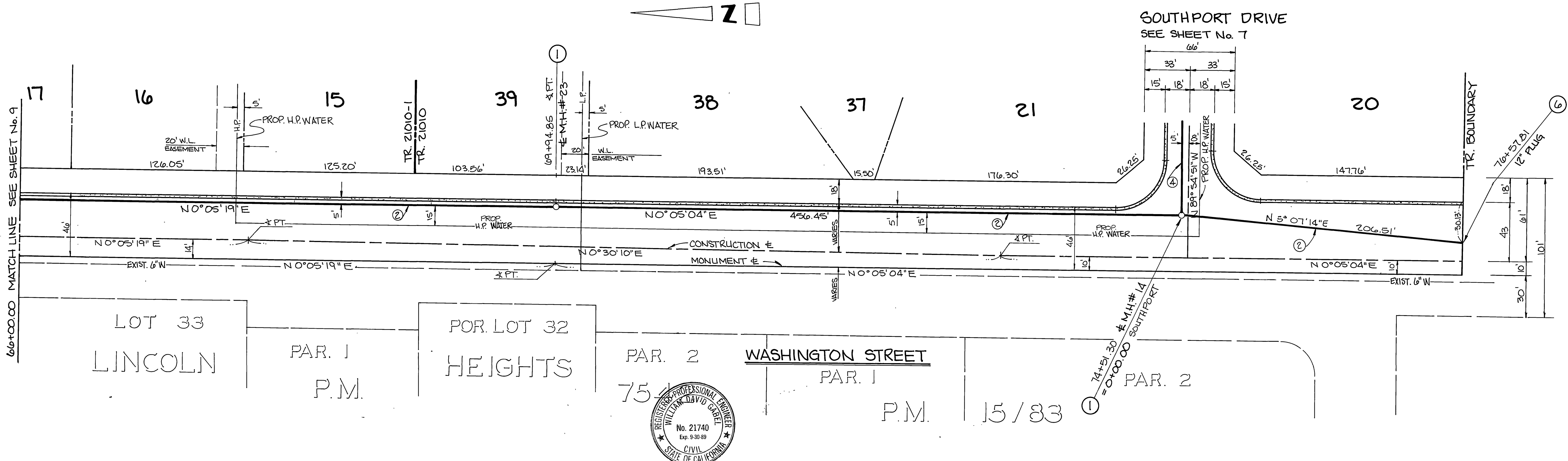
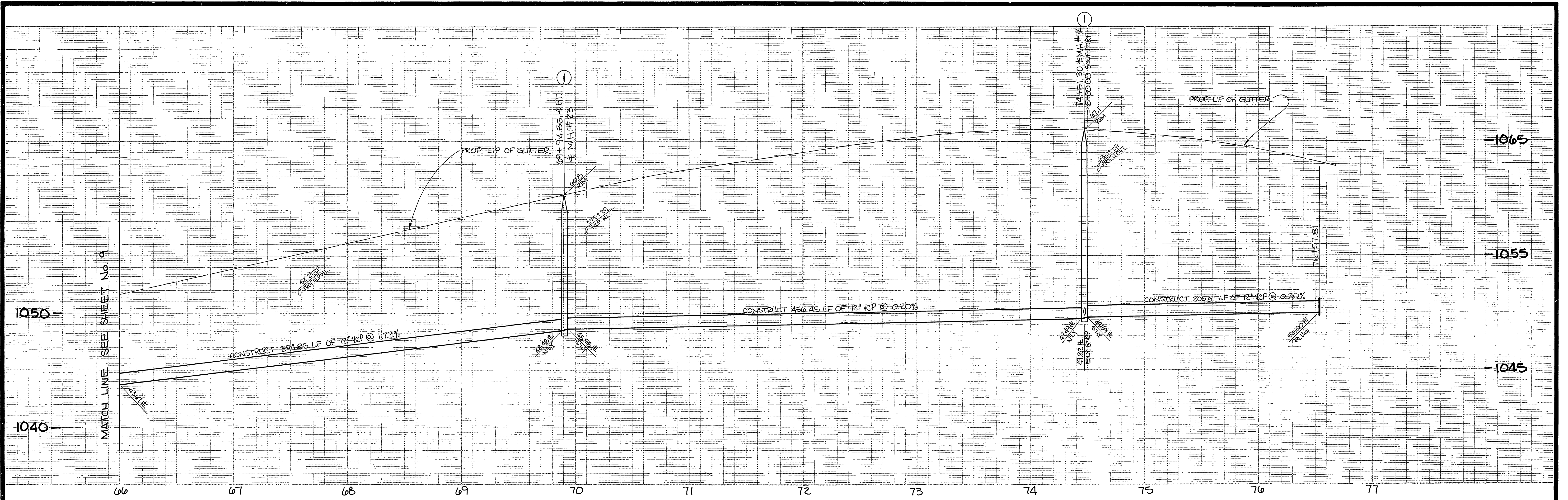
LOT 34

LINCOLN HEIGHTS
 WASHINGTON STREET

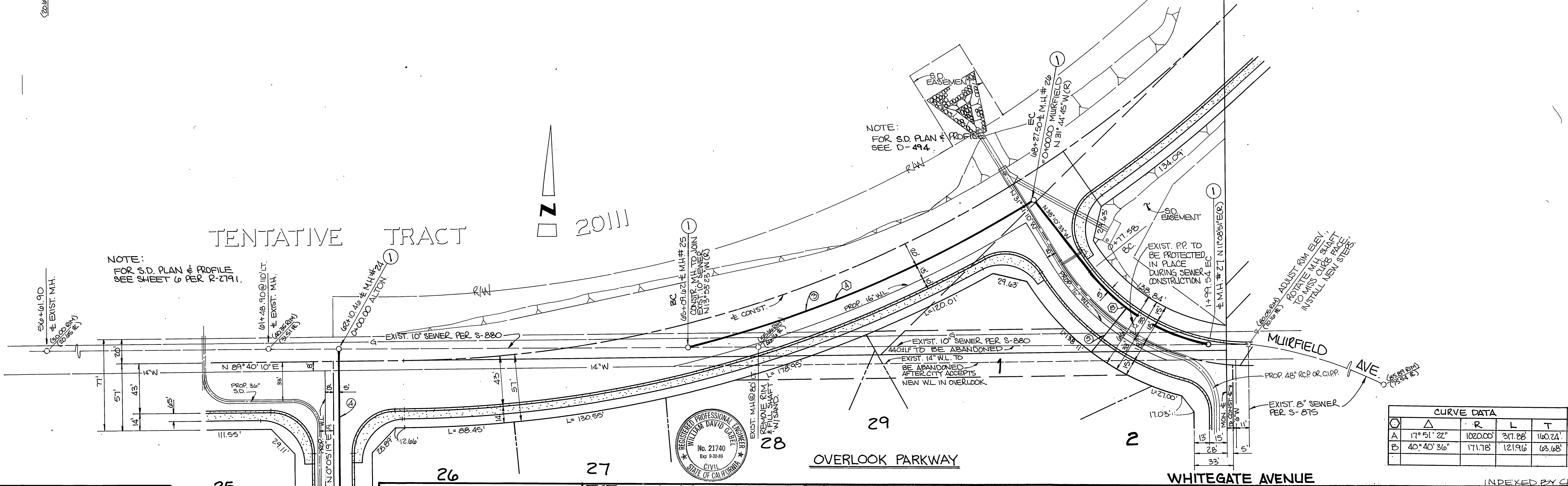
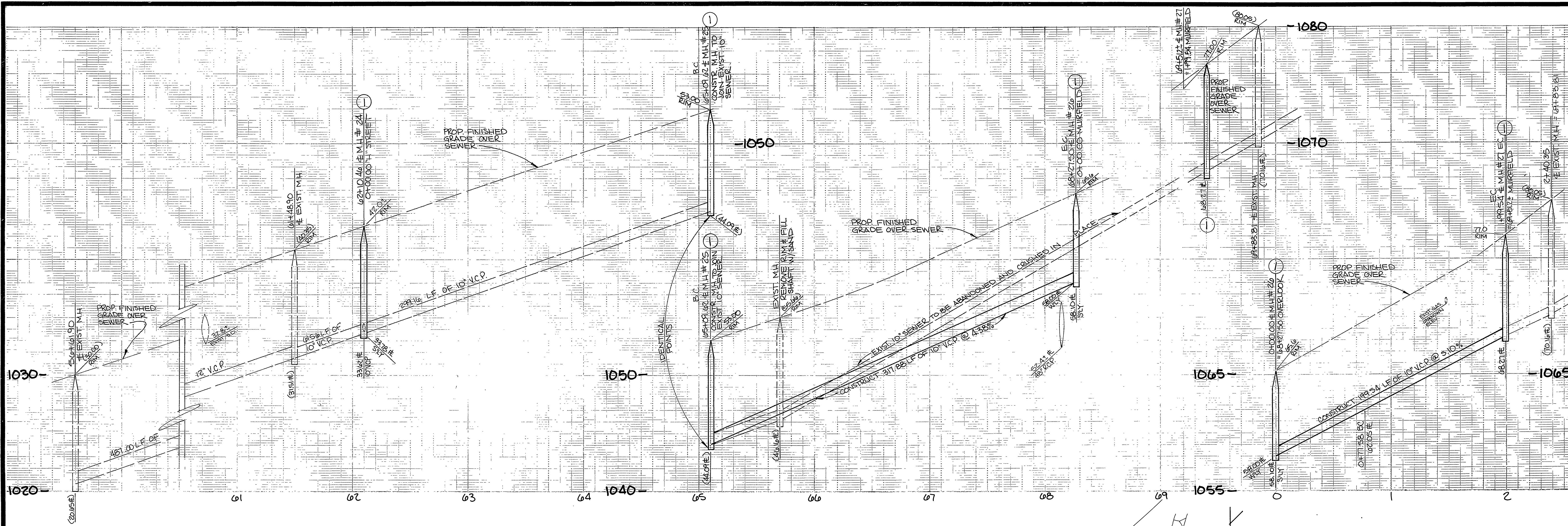
LOT 33



PACIFIC BELL TELEPHONE CO <i>[Signature]</i> APPROVED DATED 7/21/86	CITY OF RIVERSIDE WATER SYSTEM <i>[Signature]</i> APPROVED DATED 8-15-86	GABEL, COOK & BECKLUND 647 North Main Street, Suite 1-4, Riverside, Calif. 92501 Telephone 714 788-8072 APPROVED BY: <i>[Signature]</i> DATE 11 AUG 86 R.C.E. 21740 EXPIRES 30 SEPT. 1989 BENCH MARK: P.K. nail & tag in top of conc. vault on West side of Washington St. 15' North of Muirfield Rd. projected. C/R B.M. F6-G Elevation: 1029.593	CITY OF RIVERSIDE PUBLIC WORKS DEPARTMENT APPROVED BY: <i>[Signature]</i> DATE 8-26-86 PRINCIPAL ENGINEER: <i>[Signature]</i> TRAFFIC DIVISION: <i>[Signature]</i> CHIEF P. W. ENGINEER: <i>[Signature]</i>		SEWER IMPROVEMENTS PLAN AND PROFILE TRACT 21010-1 WASHINGTON STREET STA 50+00.00 TO STA 66+00.00 HORIZ. SCALE: 1" = 40' VERT. SCALE: 1" = 4'	ACCOUNT NO. S-1427 SHEET 9 OF 11 86-662
			DESIGNED BY: J.E. DRAWN BY: J.W.M. CHECKED BY: W.D.G.			



CITY OF RIVERSIDE WATER SYSTEM APPROVED BY: <i>David V. Garcia</i> 8-15-86 DATED	GABEL, COOK & BECKLUND 647 North Main Street, Suite 114, Riverside, Calif. 92501 Telephone 714 788-8072 APPROVED BY: <i>[Signature]</i> DATE: 8/26/86 R.C.E. 21740 EXPIRES 30 SEPT 89	CITY OF RIVERSIDE PUBLIC WORKS DEPARTMENT APPROVED BY: <i>William D. Hardner</i> PUBLIC WORKS DIRECTOR DATE: 8-26-86	SEWER IMPROVEMENTS PLAN AND PROFILE TRACT 21010-1 & 21010 WASHINGTON STREET STA 66+00 TO STA 76+53.10 HORIZ. SCALE: 1" = 40' VERT. SCALE: 1" = 4'	INDEXED BY CD
				ACCOUNT NO. S-1427 SHEET 10 OF 11 86-062



NOTE:
FOR S.D. PLAN & PROFILE
SEE SHEET 6 PER R-2791.

NOTE:
FOR S.D. PLAN & PROFILE
SEE D-494.

CURVE DATA				
Curve	Δ	R	L	T
A	17° 51' 22"	1020.00'	317.88'	160.74'
B	40° 40' 36"	171.78'	121.96'	68.68'

SOUTHERN CALIF. GAS CO.
C.P. Rucka
APPROVED
6-26-86
DATED

25
ALTON WAY
SEE SHEET No. 3

CITY OF RIVERSIDE WATER SYSTEM
David V. Lewis
APPROVED
8-15-86
DATED

GABEL, COOK & BECKLUND
447 North Main Street, Suite 1-8, Riverside, Calif. 92501
Telephone 714 788-8072
APPROVED BY: *W. J. Cook*
DATE: 8-26-86
REGISTERED PROFESSIONAL ENGINEER
No. 21740
Exp. 9-30-89
CIVIL
STATE OF CALIFORNIA

CITY OF RIVERSIDE
PUBLIC WORKS DEPARTMENT
APPROVED BY: *W. J. Cook*
DATE: 8-26-86
DESIGNED BY: JLE
DRAWN BY: JWM
CHECKED BY: WDG

CITY OF RIVERSIDE
PUBLIC WORKS DEPARTMENT
APPROVED BY: *William D. Gardner*
DATE: 8-26-86
TRAFFIC DIVISION
CHIEF P.W. ENGINEER

SEWER IMPROVEMENTS
PLAN AND PROFILE
TRACT 21010-1
OVERLOOK PARKWAY
HORIZ. SCALE: 1" = 40'
VERT. SCALE: 1" = 4'

INDEXED BY CD
ACCOUNT NO.
S-1427
SHEET 11 OF 11
86-062