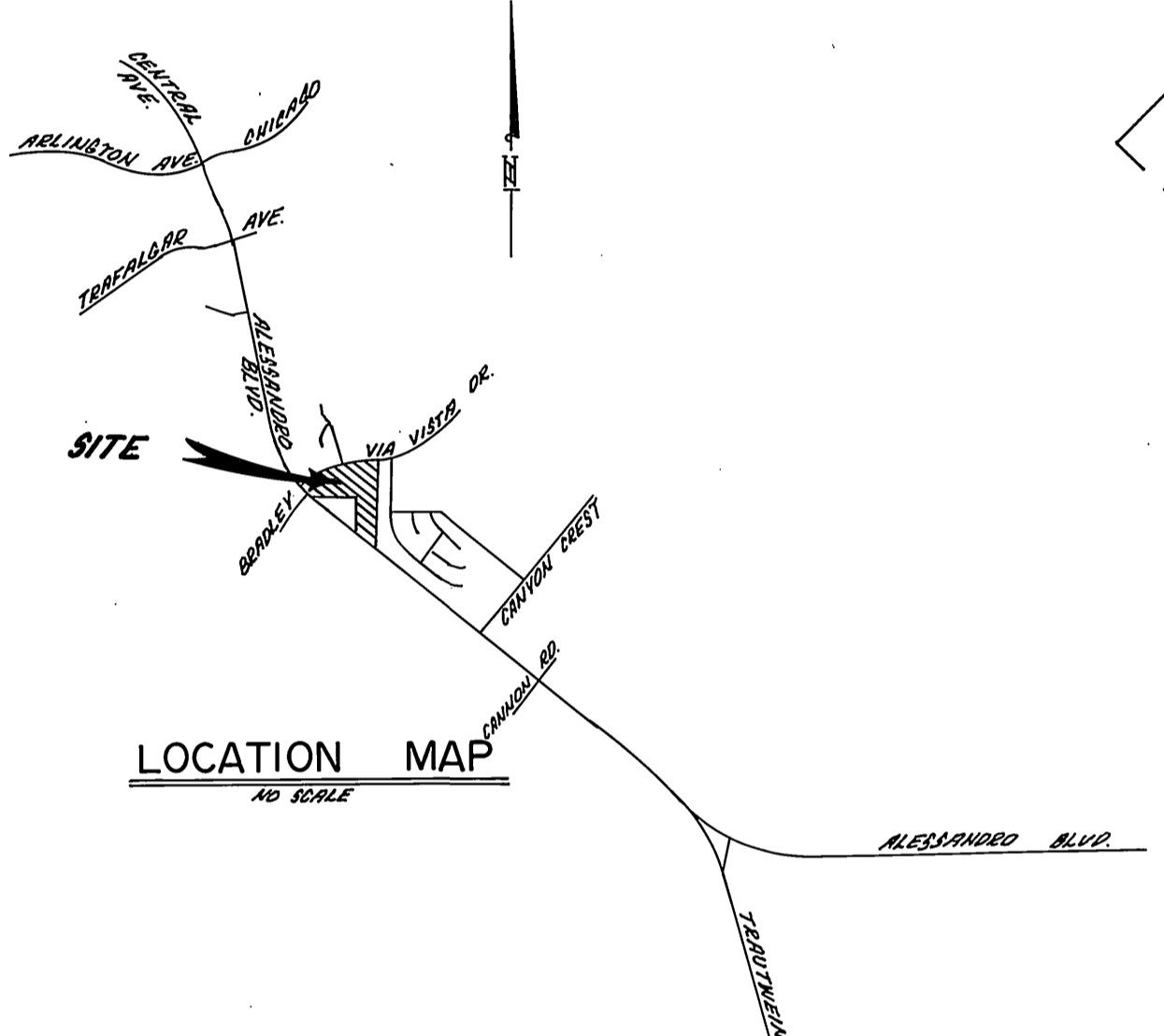


GENERAL NOTES

- IT SHALL BE THE RESPONSIBILITY OF THE CONTRACTOR TO CLEAR THE RIGHT OF WAY IN ACCORDANCE WITH THE PROVISIONS OF LAW AS IT AFFECTS EACH UTILITY INCLUDING IRRIGATION LINES AND APPURTENANCES AND AT NO COST TO THE CITY.
- CONSTRUCTION SHALL BE IN ACCORDANCE WITH THE CITY OF RIVERSIDE DEPARTMENT OF PUBLIC WORKS, STANDARD DRAWINGS, STANDARD DRAWING NO. 10, AND THE STANDARD SPECIFICATIONS FOR PUBLIC WORKS CONSTRUCTION, CURRENT EDITION.
- LOCATION OF LATERALS TO BE DETERMINED IN THE FIELD AT THE DIRECTION OF THE OWNER. AVOID CONFLICT WITH PROPOSED AND/OR EXISTING FACILITIES.
- CONTRACTOR IS TO VERIFY EXISTING SEWER ELEVATION PRIOR TO CONSTRUCTION.
- NO FINISHED FLOOR ELEVATION SHALL BE LESS THAN 4' ABOVE THE SEWER FLOW LINE AT POINT OF CONNECTION WITHOUT HAVING A PROPER BACKWATER VALVE INSTALLED IN THE LATERAL.
- THE SEWER CONTRACTOR SHALL ADJUST MANHOLES TO FINAL GRADE AFTER PAVING IS COMPLETED.
- A PLUG SHALL BE INSTALLED AND WILL REMAIN IN PLACE WHERE THE NEW SEWER CONNECTS WITH THE EXISTING SEWER UNTIL THE NEW SEWER IS ACCEPTED BY THE CITY.
- THE PRIVATE ENGINEER SIGNING THESE PLANS IS RESPONSIBLE FOR ASSURING THE ACCURACY AND ACCEPTABILITY TO THE WORK HEREON. IN THE EVENT OF DISCREPANCIES ARISING DURING CONSTRUCTION, THE PRIVATE ENGINEER SHALL BE RESPONSIBLE FOR DETERMINING AN ACCEPTABLE SOLUTION AND REVISING THE PLANS FOR APPROVAL BY THE CITY. (THIS NOTE REQUIRED ON ALL PLANS.)
- THE CONTRACTOR SHALL CALL IN A LOCATION REQUEST TO UNDERGROUND SERVICE ALERT (USA), PHONE NO. 1-800-422-4133, TWO WORKING DAYS BEFORE DIGGING. CONSTRUCTION PERMITS WILL NOT BE ISSUED BY THE PUBLIC WORKS DEPARTMENT INVOLVING EXCAVATION FOR UNDERGROUND FACILITIES UNLESS THE APPLICANT HAS BEEN PROVIDED AN INQUIRY IDENTIFICATION NUMBER BY U.S.A.
- THE PRIVATE ENGINEER PREPARING THESE PLANS SHALL BE RESPONSIBLE FOR PRESERVING OR RE-ESTABLISHING AND REFERENCING SURVEY MONUMENTS DESTROYED, DISTURBED OR BURIED AS A RESULT OF CONSTRUCTION SHOWN HEREON.



LOCATION MAP
NO SCALE

INDEX MAP
NO SCALE

NOTICE TO CONTRACTOR

THE EXISTENCE AND LOCATION OF ANY UNDERGROUND UTILITY PIPES OR STRUCTURES SHOWN ON THESE PLANS ARE OBTAINED BY A SEARCH OF THE AVAILABLE RECORDS. TO THE BEST OF OUR KNOWLEDGE, THERE ARE NO EXISTING UTILITIES EXCEPT THOSE SHOWN ON THESE PLANS.

THE CONTRACTOR IS REQUIRED TO TAKE DUE PRECAUTIONARY MEASURES TO PROTECT THE UTILITY LINES SHOWN AND ANY OTHER LINES NOT OF RECORD OR NOT SHOWN ON THESE PLANS.

BENCH MARK
 1/4 B.M. F.B.C. R.R. nail & top in N 1/4 end of
 6' x 12' x 3' high granite rock N 1/4 of intersection
 of Alessandro Blvd and Troutwein Ad.
 1/4 F.B. 7/24/72 Elev. 10213.44



ALBERT A. WEBB ASSOCIATES
 (714) 686-1070
 CIVIL ENGINEERS
 3720 Mc Carty St
 RIVERSIDE, CALIFORNIA

APPROVED BY: *[Signature]* DATE: 12/26/86
 R.E. No. 27983

W.O. 86-90 FOR: MORGAN DEK. F.B. 1053

MARK	REVISIONS	APPR.	DATE

CITY OF RIVERSIDE, CALIFORNIA
PUBLIC WORKS DEPARTMENT

APPROVED BY	BY	DATE	APPROVED BY
PRINCIPAL ENGINEER	<i>[Signature]</i>	9-10-87	<i>[Signature]</i>
PARK DEPARTMENT			DIRECTOR OF PUBLIC WORKS
TRAFFIC DIVISION			
CHIEF PUB. WKS. ENGR.	<i>[Signature]</i>	12/26/87	DATE: 4-13-87

SEWER PLAN AND PROFILE

TRACT NO. 21679-1

INDEX

SCALE: AS NOTED

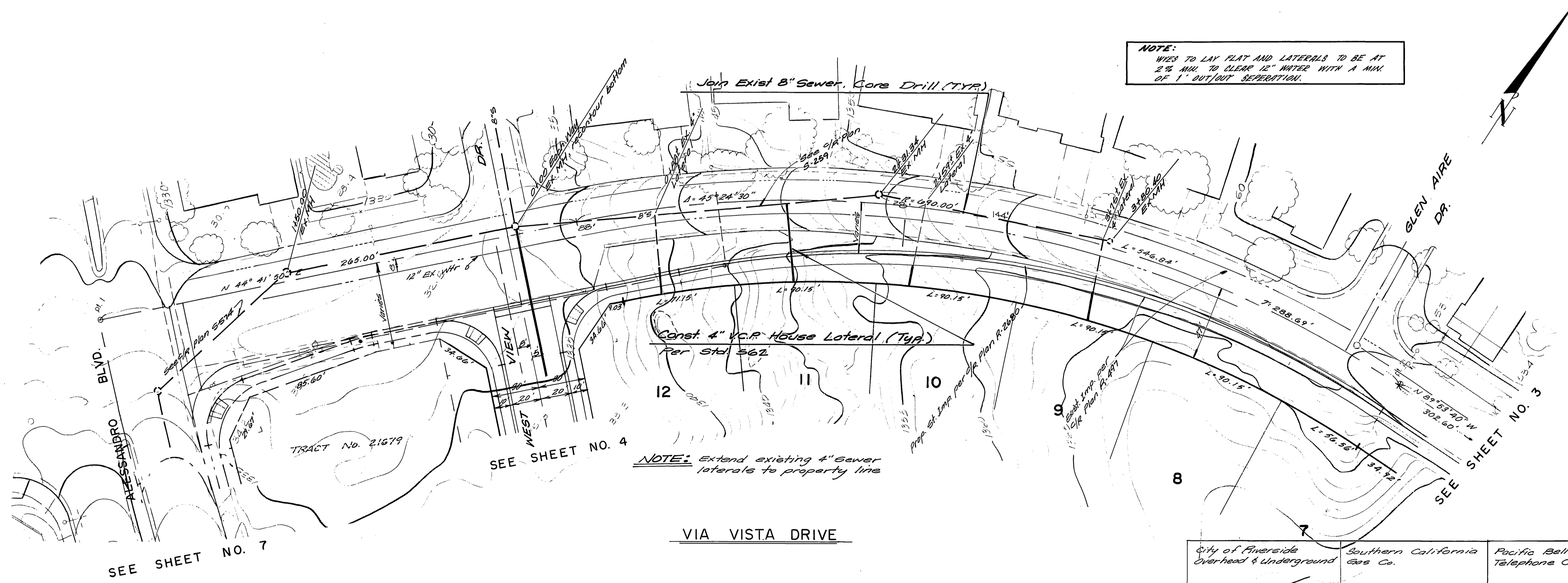
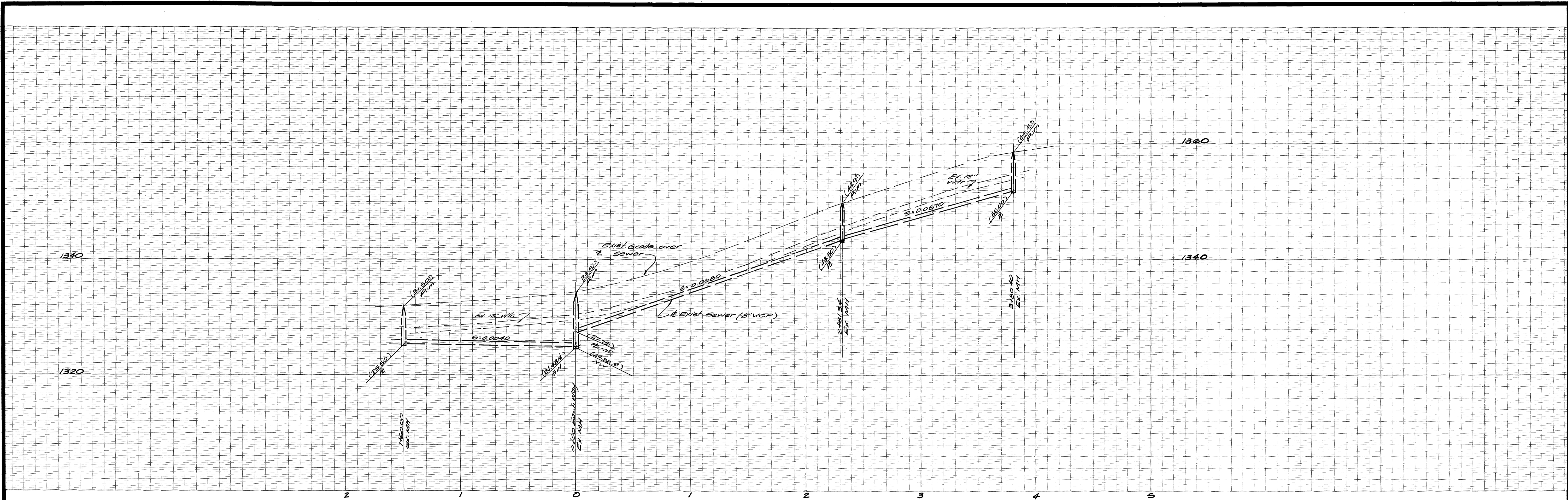
INDEX/CD

ACCOUNT No. 5-1453

DRAWING NUMBER

SHEET 1 OF 6

86-90-B



NOTE:
 WYES TO LAY FLAT AND LATERALS TO BE AT
 2% MIN. TO CLEAR 12" WATER WITH A MIN.
 OF 1" OUT/OUT SEPARATION.

NOTE: Extend existing 4" sewer
 laterals to property line

BENCH MARK
 3/13 P.M. F.S.O. R.H. nail & tag in N^{1/4} end of
 6'x15'x3' high granite rock N^{1/4} of intersection
 of Alessandro Blvd. & Troutman Rd. C/R
 F.S. 736/72 Elev. 1621.344



ALBERT A. WEBB ASSOCIATES
 (714) 686-1070
 CIVIL ENGINEERS
 3700 145 STREET
 RIVERSIDE, CALIFORNIA
 APPROVED BY: [Signature] DATE: 12-28-87
 R.E. No. 27983

MARK	REVISIONS	APPR.	DATE

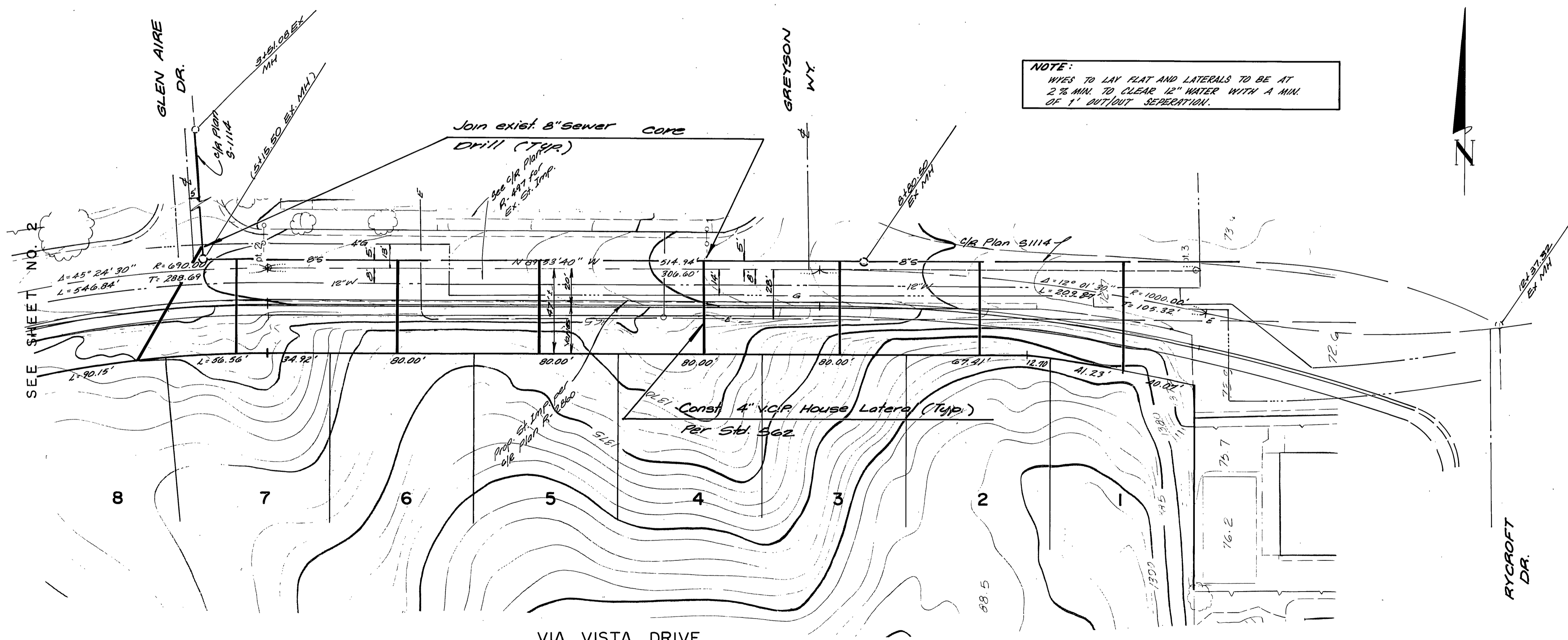
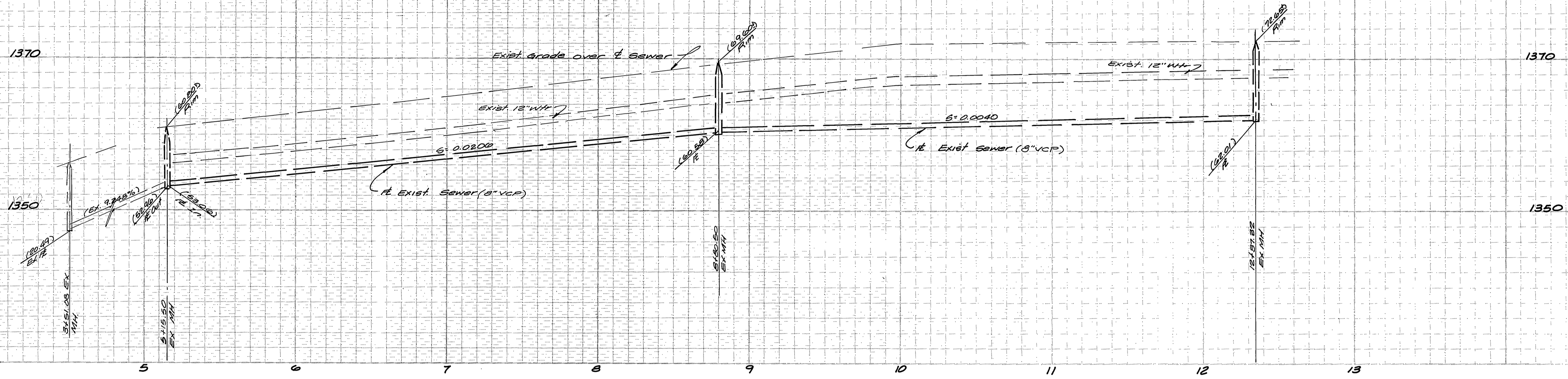
CITY OF RIVERSIDE, CALIFORNIA
 PUBLIC WORKS DEPARTMENT
 APPROVED BY: [Signature] DATE: 4/13/87
 PRINCIPAL ENGINEER
 PARK DEPARTMENT
 TRAFFIC DIVISION
 CHIEF PUB. WKS. ENGR.

SEWER PLAN AND PROFILE
 TRACT NO. 21679-1
 VIA VISTA DRIVE
 SCALE: 1" = 40' HORIZ. 1" = 8' VERT.

ACCOUNT No. 5-1453
 DRAWING NUMBER
 SHEET 2 OF 6
 86-90-B

City of Riverside Overhead & Underground	Southern California Gas Co.	Pacific Bell Telephone Co.	City of Riverside WATER System
Michael A. Tullis Chief Util. Eng. Electrical 4-8-87 Date	David J. Rubin Approved by 9-7-87 Date	Jim. Duval Approved by 3-24-87 Date	Robert S. [Signature] APPROVED 4/1/87 Date

INDEX/CD



NOTE:
 WYES TO LAY FLAT AND LATERALS TO BE AT
 2 1/2 MIN. TO CLEAR 12" WATER WITH A MIN.
 OF 1" OUTLIFT SEPERATION.

BENCH MARK
 C/A B.M. F.S.O. R.B. nail and tag in N'ly end of
 6x16x3 high granite rock N'ly of 115' of
 Alessandro Blvd & Troutwein Rd. C/A F.B.
 738/72 Elev. 1627.344

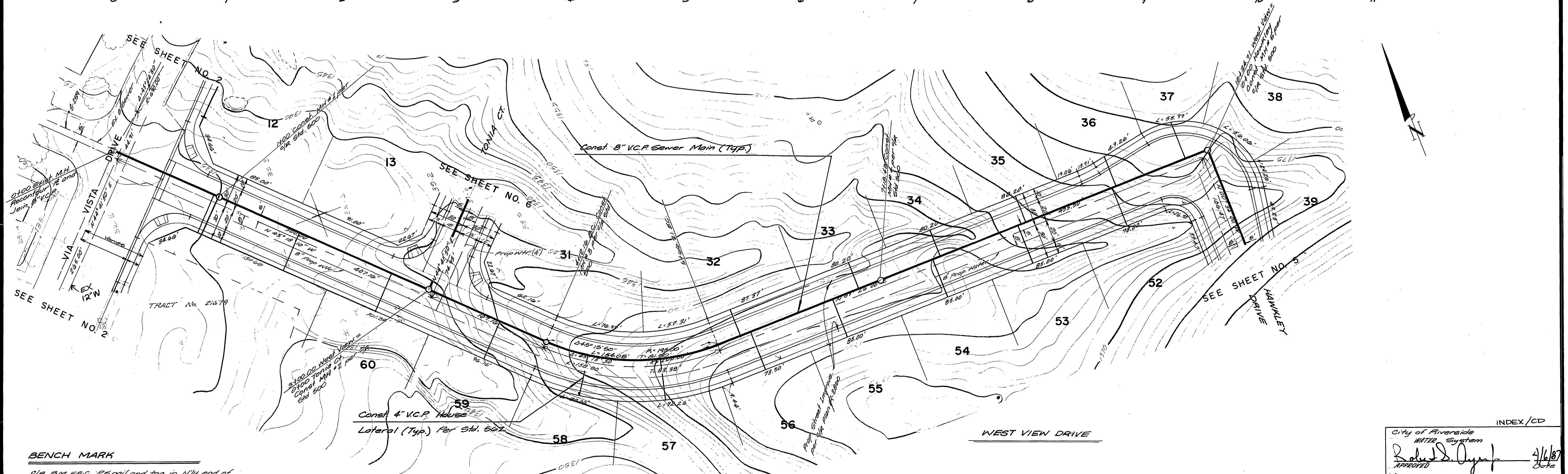
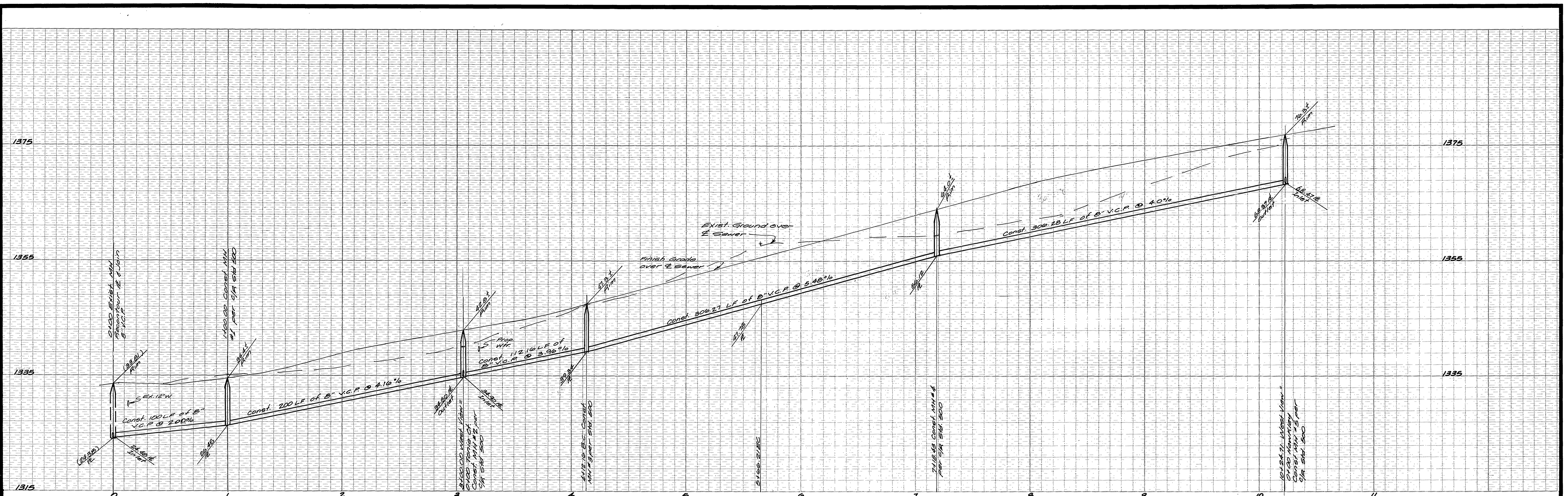


ALBERT A. WEBB ASSOCIATES
 (THE) 682-1070
 CIVIL ENGINEERS
 3700 S. MICHIGAN
 RIVERSIDE, CALIFORNIA

APPROVED BY: *[Signature]* DATE: 12/26
 R.E. No. 21923

W.O. 86-90 FOR Morgan Dev. F.B. 1053 DESIGNED BY R.L.T. DRAWN BY ALT CHECKED BY RLT

City of Riverside Overhead & Underground <i>[Signature]</i> Chief Engineer Electrical 4-8-87 Date	Southern California Gas Co. <i>[Signature]</i> Approved by Date	Pacific Bell Telephone Co. <i>[Signature]</i> Approved by Date	City of Riverside WATER System <i>[Signature]</i> APPROVED Date
CITY OF RIVERSIDE, CALIFORNIA PUBLIC WORKS DEPARTMENT			
SEWER PLAN AND PROFILE			
TRACT NO. 21679-1 VIA VISTA DRIVE			
ACCOUNT NO. DRAWING NUMBER 5-1453		SHEET 3 OF 6	
SCALE: 1" = 40' HORIZ. 1" = 8' VERT.			



BENCH MARK
 c/a B.M. F.B.C. RR rail and tag in N^{ly} end of 6'x15'x3" high granite rock N^{ly} of inter. of Alessandro Blvd. and Trautwein Rd. c/a R.E. 735/72. Elev 1627.344.



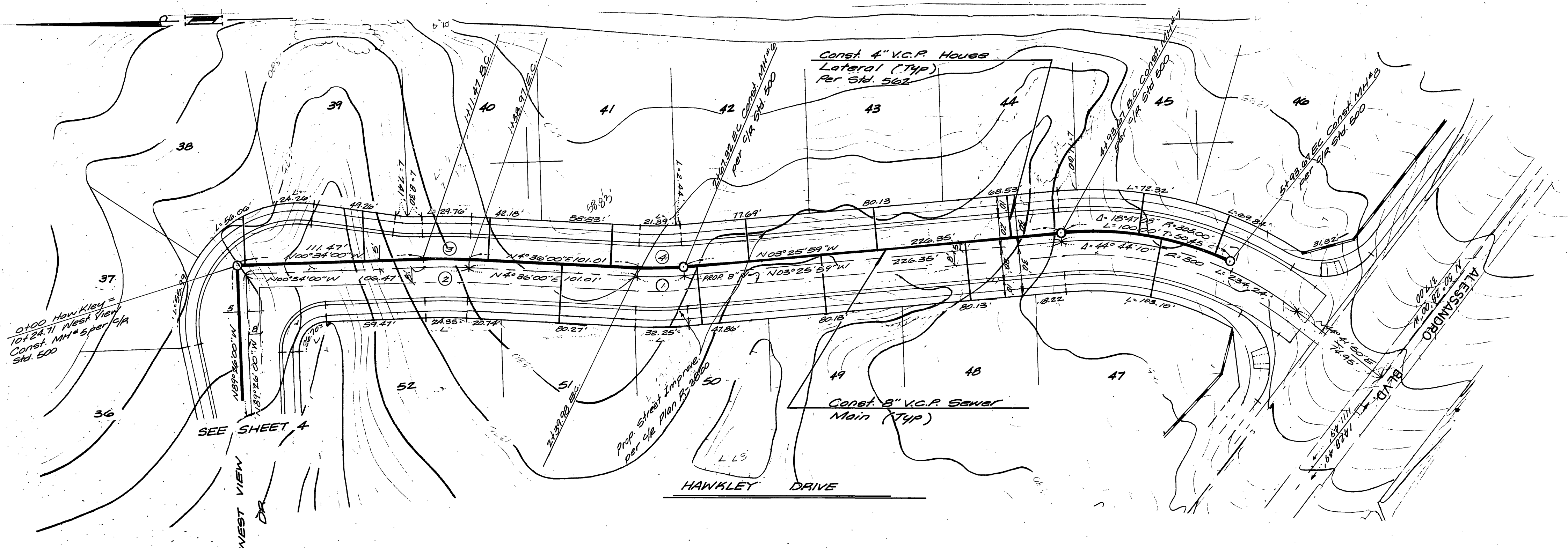
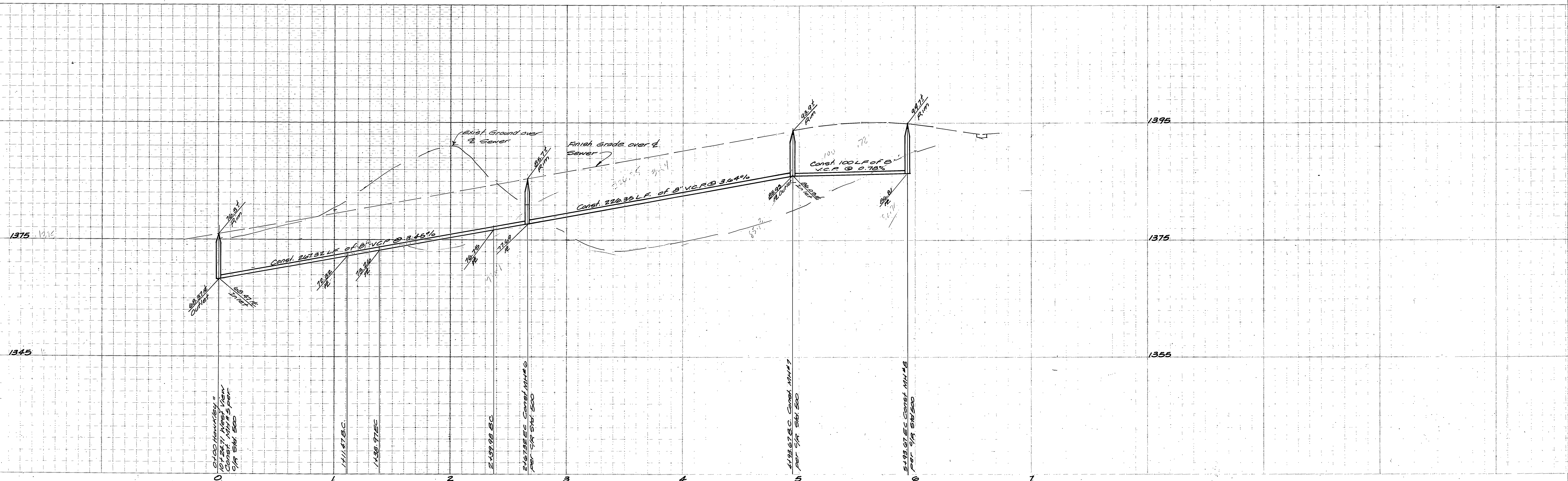
ALBERT A. WEBB ASSOCIATES
 (714) 936-1070
 CIVIL ENGINEERS
 3785 UNIVERSITY BLVD.
 RIVERSIDE, CALIFORNIA
 APPROVED BY: *[Signature]* DATE: 4-13-87
 R.E. No. 27983
 W.O. 86-90 FOR: Morgan Dev. F.B. 053

MARK	REVISIONS	APPR. DATE

CITY OF RIVERSIDE, CALIFORNIA
PUBLIC WORKS DEPARTMENT
 APPROVED BY: *[Signature]* DATE: 4-13-87
 PRINCIPAL ENGINEER
 PARK DEPARTMENT
 TRAFFIC DIVISION
 CHIEF PUB. WKS. ENGR.
 W.W. 4/17

SEWER PLAN AND PROFILE
TRACT NO. 21679-1
WEST VIEW DRIVE
 SCALE: 1" = 40' HORIZ. 1" = 8' VERT.

ACCOUNT No. 86-90-B
 DRAWING NUMBER 5-1453
 SHEET 4 OF 6
 INDEX/CD
 City of Riverside WATER System
 APPROVED: *[Signature]* 4/16/87
 DATE



CURVE DATA				
NO.	Δ	R	L	T
1	08°01'59"	200.00'	29.04'	14.04'
2	05°10'00"	300.00'	27.05'	13.54'
3	05°10'00"	300.00'	27.50'	13.76'
4	08°01'59"	195.00'	27.34'	13.69'

BENCH MARK
 5/4 B.M. F.B.C. R.H. nail & tag in N^{1/4} and
 of 6x15x3" high granite rock N^{1/4} of
 intersection of Alessandro Blvd. &
 Troutwein Rd. 5/4 F.B. 136/72. Elev. 1627.344



ALBERT A. WEBB ASSOCIATES
 (114) 680-1070
 CIVIL ENGINEERS
 3180 72ND ST.
 RIVERSIDE, CALIFORNIA
 APPROVED BY: *[Signature]* DATE: 12-12-86
 R.E. No. 27983

MARK REVISIONS APPR. DATE
 DESIGNED BY: *ALT* DRAWN BY: *ALT* CHECKED BY: *ALT*

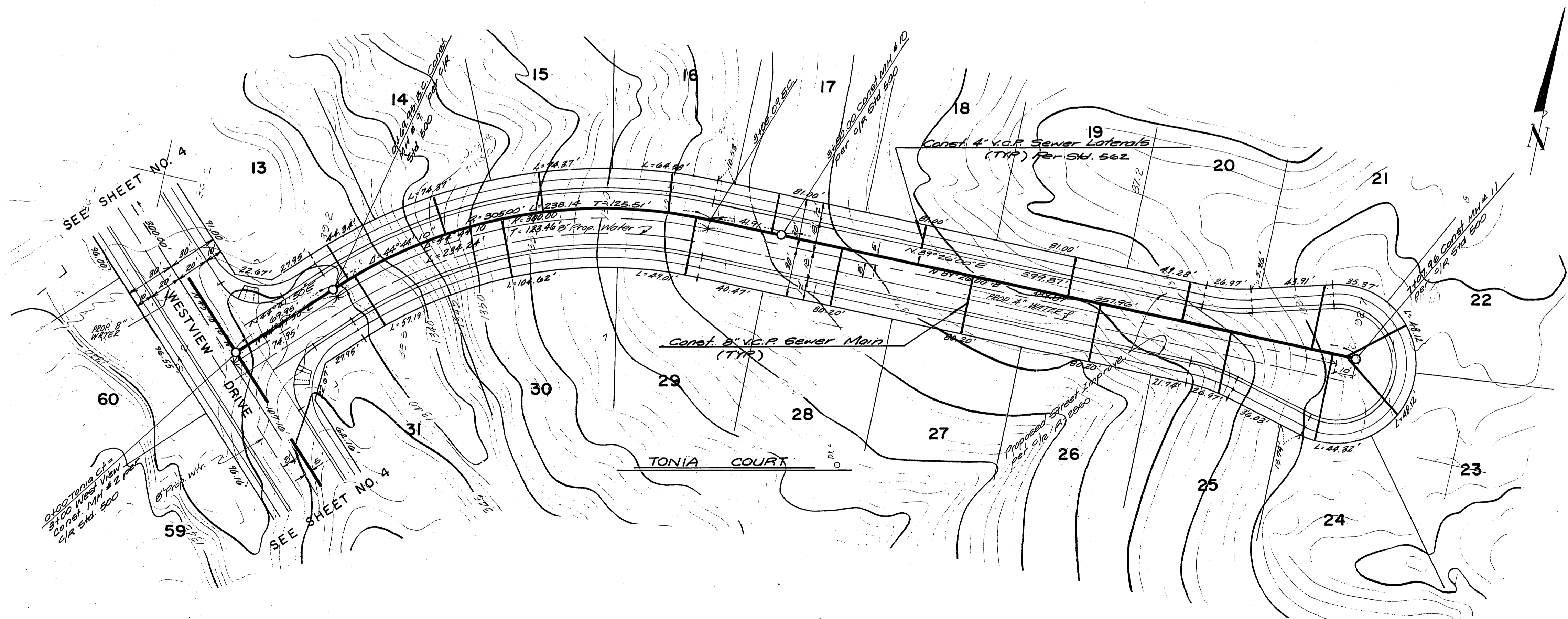
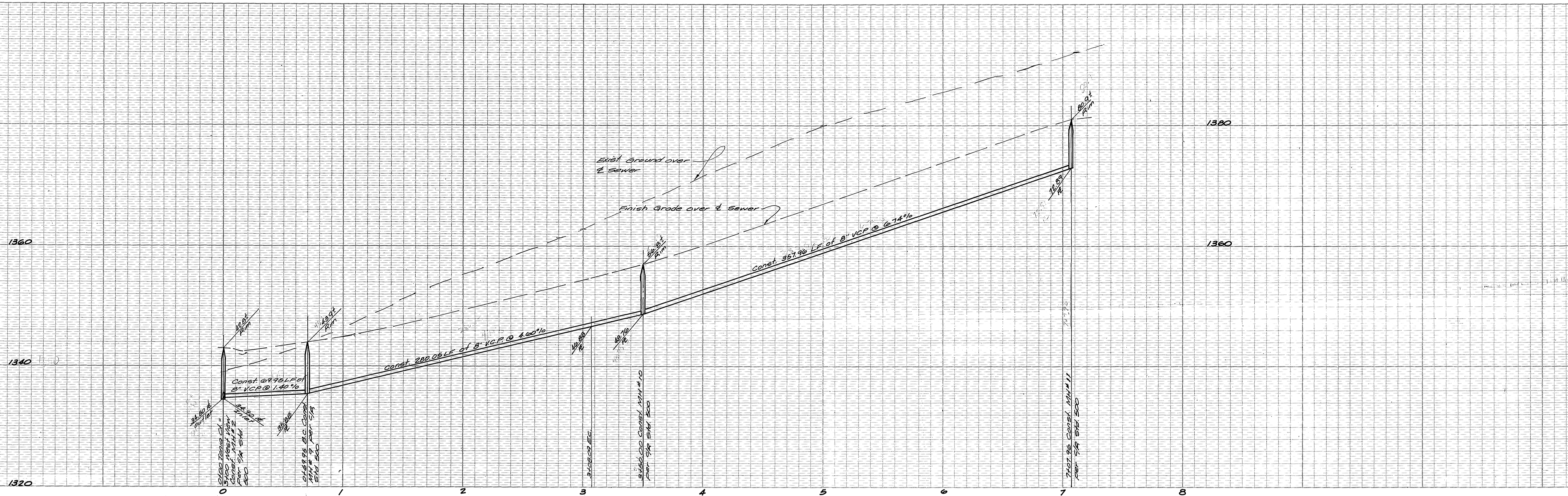
CITY OF RIVERSIDE, CALIFORNIA
 PUBLIC WORKS DEPARTMENT
 APPROVED BY: *[Signature]* DATE: 4-13-87
 PRINCIPAL ENGINEER: *W.C. 4-10-87*
 PARK DEPARTMENT
 TRAFFIC DIVISION
 CHIEF PUB. WKS. ENGR. *W.C. 4/10/87*

SEWER PLAN AND PROFILE
 TRACT NO. 21679-1
 HAWKLEY DRIVE
 SCALE: 1" = 40' HORIZ. 1" = 8' VERT.

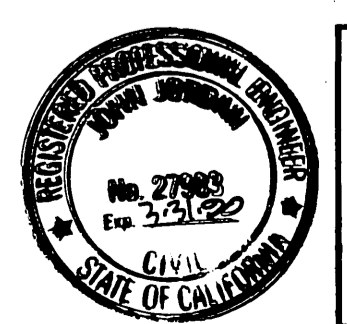
ACCOUNT No.
 DRAWING NUMBER
 5-1453
 SHEET 5 OF 6
 86-90-B

City of Riverside
 WATER SYSTEM
[Signature] 4/16/87
 APPROVED

INDEX/CD



BENCH MARK
 C/A B.M. 10.0. R.H. nail & top in N 1/4 end of 6" x 10" x 3" high granite rock N 1/4 of intersection of Alessandro Blvd. and Troutwein Rd. C/A F.B. 136/12 Elev. 1627.344



ALBERT A. WEBB ASSOCIATES
 (714) 686-1070
 CIVIL ENGINEERS
 3145 N. GARDEN ST.
 RIVERSIDE, CALIFORNIA

APPROVED BY: *[Signature]* DATE: 12.26.86
 R.E. No. 27983

W.O. 86-90 FOR: Morgan Dev F.B. 1053 DESIGNED BY: ALT DRAWN BY: ALT CHECKED BY: ALT

CITY OF RIVERSIDE, CALIFORNIA
 PUBLIC WORKS DEPARTMENT

APPROVED BY: *[Signature]* DATE: 4.13.87
 PRINCIPAL ENGINEER
 PARK DEPARTMENT
 TRAFFIC DIVISION
 CHIEF PUB. WKS. ENGR.

SEWER PLAN AND PROFILE
 TRACT NO. 21679-1
 TONIA COURT

SCALE: 1" = 40' HORIZ. 1" = 8' VERT.

INDEX/CD
 City of Riverside WATER System
[Signature] 4/16/87
 APPROVED 153

ACCOUNT No. 5-1453
 DRAWING NUMBER SHEET 6 OF 6
 86-90-B