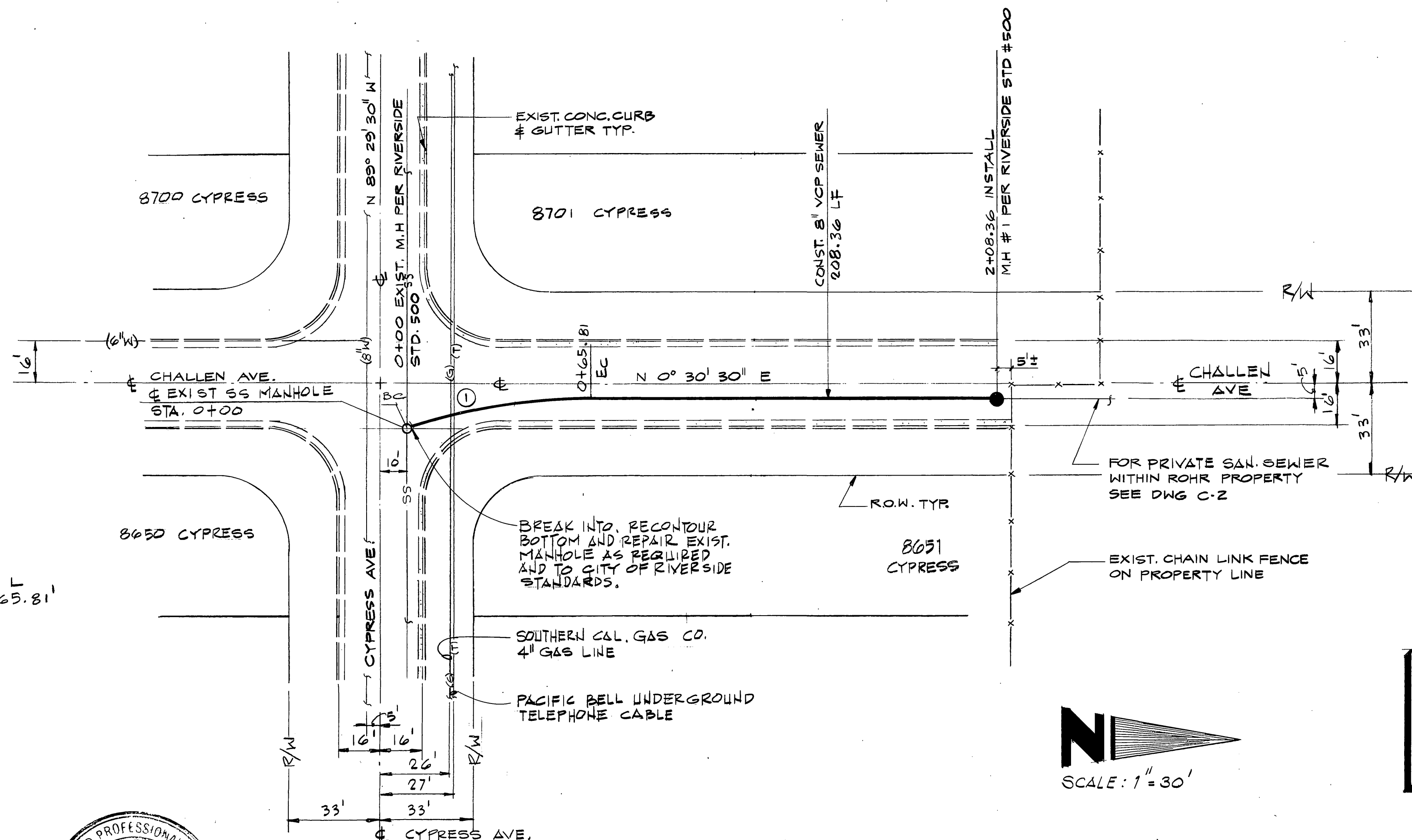


VICINITY MAP
 NO SCALE

CURVE DATA

① Δ 13° 20' 12" R 195' T 33.22' L 65.81'

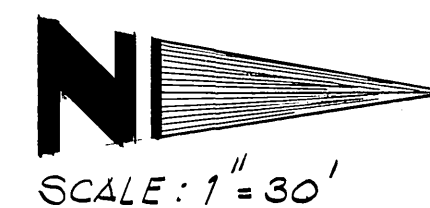


GENERAL NOTES

- It shall be the responsibility of the contractor to clear the right of way in accordance with the provisions to law as it affects each utility including irrigation lines and appurtenances and at no cost to the City.
- Construction shall be in accordance with the City of Riverside Department of Public Works, Standard Drawings, Standard Drawing No. 10 and the Standard Specifications for Public Works Construction, current edition.
- The private engineer signing these plans is responsible for assuring the accuracy and acceptability of the work hereon. In the event of discrepancies arising during construction, the private engineer shall be responsible for determining and acceptable solution and revising the plans for approval by the City.
- Quantities shown are for information only and the City of Riverside is not responsible for their accuracy.
- Street opening permit for construction is required.
- The contractor shall call in a location request to Underground Service Alert (USA), Phone No. 1-800-422-4133, two working days before digging. No construction permit will be issued by the Public Works Department involving excavation for underground facilities unless the applicant has been provided an inquiry identification number by U.S.A.
- Contractor is to verify existing sewer elevation prior to construction.
- A plug shall be installed and will remain in place where the new sewer connects with the existing sewer until the new sewer is accepted by the City.
- The sewer contractor shall adjust manholes to final grade after paving is completed.
- Neatly sawcut and remove to clean straight lines exist AC roadway. Bedding backfill and resurfacing shall be in accordance with City of Riverside Standard Dwg. #453.
- Any traffic control striping obliterated and/or badly worn during construction shall be restored by the contractor within five days after notification from the City Inspectors.
- The developer shall be responsible for preserving or re-establishing and referencing survey monuments destroyed, disturbed or buried as a result of construction shown hereon.

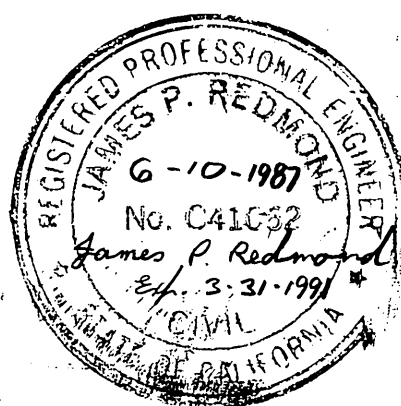
BENCH MARK

B.M. - G3-J P.K. NAIL AND CITY ENGR. TAG IN CONC. BASE OF TRAFFIC LIGHT AT N.E. CORNER OF JACKSON ST. AND VAN BUREN BLVD. ELEVATION = 736.671'



PACIFIC BELL
 6/11/87
 SOUTHERN CAL. GAS CO.
 W.W. Lutton 6/11/87
 PUBLIC UTILITIES DEPT. ELECTRIC

APPROVED BY	DATE	BY
PUBLIC UTILITIES DEPT. WATER DIVISION		Carl Weinigantow 6/15/87



FSEC FACILITIES SYSTEMS ENGINEERING CORP.
 PLANNING - ARCHITECTURE - ENGINEERING
 8932 SO. LA CIENEGA BLVD. INGLEWOOD, CA 90301 (310) 776-7200

MARK	REVISIONS	APPR. DATE
DESIGNED BY SR	DRAWN BY RMB	CHECKED BY SR

CITY OF RIVERSIDE
 PUBLIC WORKS DEPARTMENT

APPROVED BY	DATE	BY
PRINCIPAL ENGINEER	6-17-87	Benny Beal
PARK DEPARTMENT		
TRAFFIC DIVISION		
CHIEF P.W. ENGINEER	6-18-87	

DATE 6/18/87

CITY OF RIVERSIDE
 CHALLENGE AVENUE
 SEWER PLAN & PROFILE
 FOR ROHR - 8100 & RINGLINGTON

HORIZ. SCALE: 1" = 30' VERT. SCALE: 1" = 3'

ACCOUNT NO.
 S-1470
 SHEET 1 OF 1