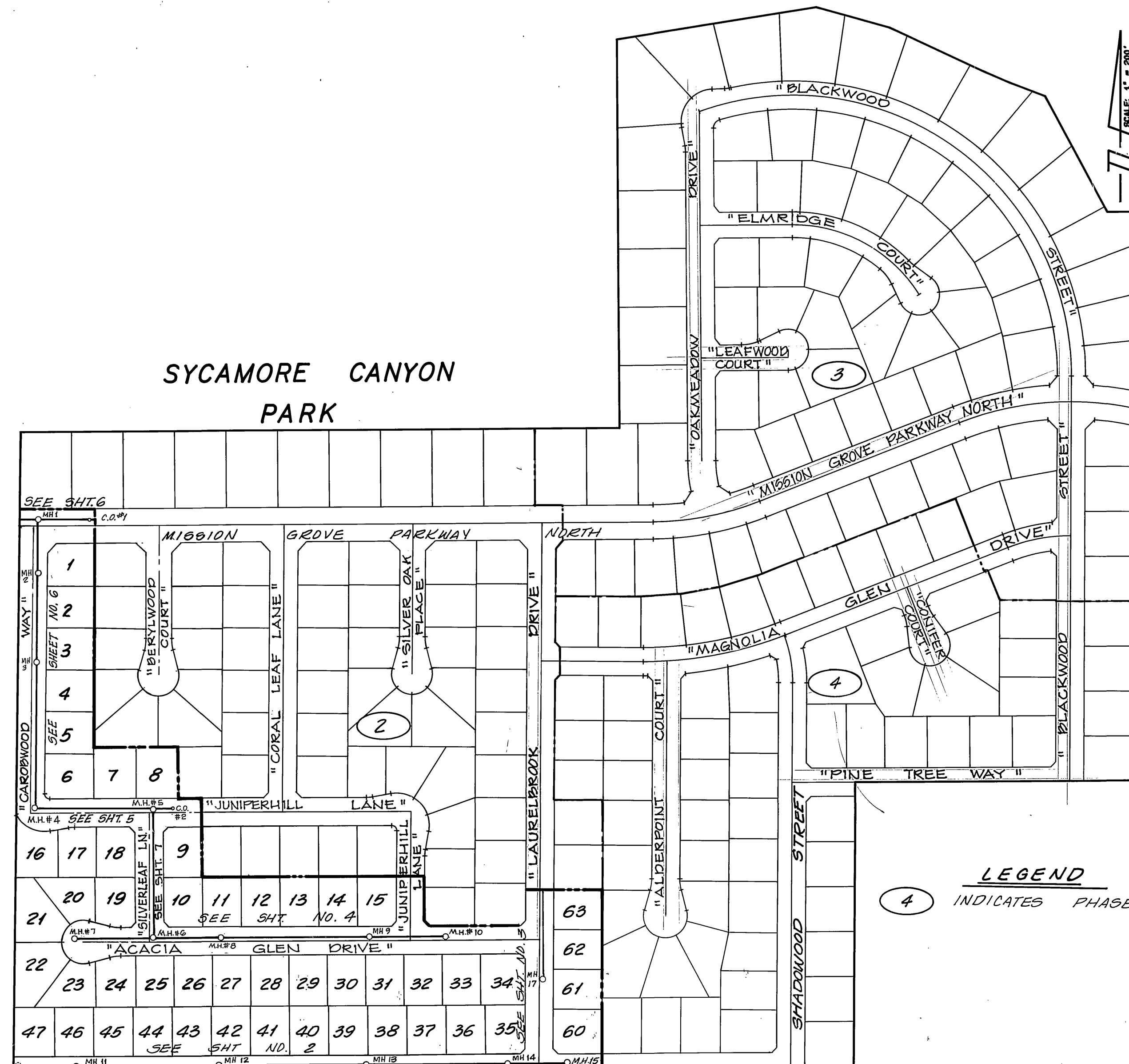


GENERAL NOTES

- IT SHALL BE THE RESPONSIBILITY OF THE CONTRACTOR TO CLEAR THE RIGHT-OF-WAY IN ACCORDANCE WITH THE PROVISIONS OF LAW AS IT AFFECTS EACH UTILITY INCLUDING IRRIGATION LINES AND APPURTENANCES AT NO COST TO THE CITY.
- CONSTRUCTION SHALL BE IN ACCORDANCE WITH THE CITY OF RIVERSIDE DEPARTMENT OF PUBLIC WORKS, STANDARD DRAWINGS, STANDARD DRAWING NO. 10 AND THE STANDARD SPECIFICATIONS FOR PUBLIC WORKS CONSTRUCTION, CURRENT EDITION.
- THE PRIVATE ENGINEER SIGNING THESE PLANS IS RESPONSIBLE FOR ASSURING THE ACCURACY AND ACCEPTABILITY OF THE WORK HEREON. IN THE EVENT OF DISCREPANCIES ARISING DURING CONSTRUCTION, THE PRIVATE ENGINEER SHALL BE RESPONSIBLE FOR DETERMINING AN ACCEPTABLE SOLUTION AND REVISING THE PLANS FOR APPROVAL BY THE CITY.
- QUANTITIES SHOWN ARE FOR INFORMATION ONLY AND THE CITY OF RIVERSIDE IS NOT RESPONSIBLE FOR THEIR ACCURACY.
- THE DEVELOPER SHALL BE RESPONSIBLE FOR PRESERVING OR RE-ESTABLISHING AND REFERENCING SURVEY MONUMENTS DESTROYED, DISTURBED, OR BURIED AS A RESULT OF CONSTRUCTION SHOWN HEREON.
- ALL FLAGGED ELEVATIONS SHALL BE STAKED IN THE FIELD BY THE PRIVATE ENGINEER.
- THE CONTRACTOR SHALL CALL IN A LOCATION REQUEST TO UNDERGROUND SERVICE ALERT (USA), PHONE NO. 1-800-422-4133, TWO WORKING DAYS BEFORE DIGGING. NO CONSTRUCTION PERMIT WILL BE ISSUED BY THE PUBLIC WORKS DEPARTMENT INVOLVING EXCAVATION FOR UNDERGROUND FACILITIES UNLESS THE APPLICANT HAS BEEN PROVIDED AN UNQUIRY IDENTIFICATION NUMBER BY U.S.A..
- CONTRACTOR IS TO VERIFY EXISTING SEWER ELEVATION PRIOR TO CONSTRUCTION.
- LOCATION OF LATERALS TO BE DETERMINED IN THE FIELD AT THE DIRECTION OF THE OWNER. AVOID CONFLICT WITH PROPOSED AND/OR EXISTING FACILITIES.
- NO FINISHED FLOOR ELEVATION SHALL BE LESS THAN 4' ABOVE THE SEWER FLOW LINE AT POINT OF CONNECTION WITHOUT HAVING A PROPER BACKWATER VALVE INSTALLED IN THE LATERAL.
- THE SEWER CONTRACTOR SHALL ADJUST MANHOLES TO FINAL GRADE AFTER PAVING IS COMPLETED.
- A PLUG SHALL BE INSTALLED AND WILL REMAIN IN PLACE WHERE THE NEW SEWER CONNECTS WITH THE EXISTING SEWER UNTIL THE NEW SEWER IS ACCEPTED BY THE CITY.

CONSTRUCTION NOTES

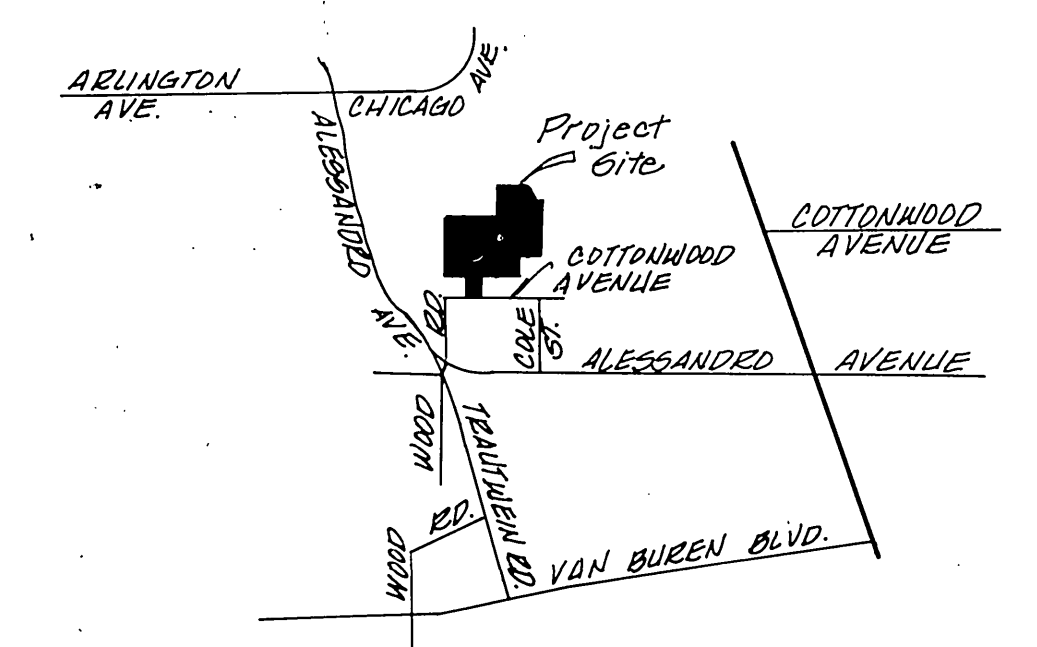
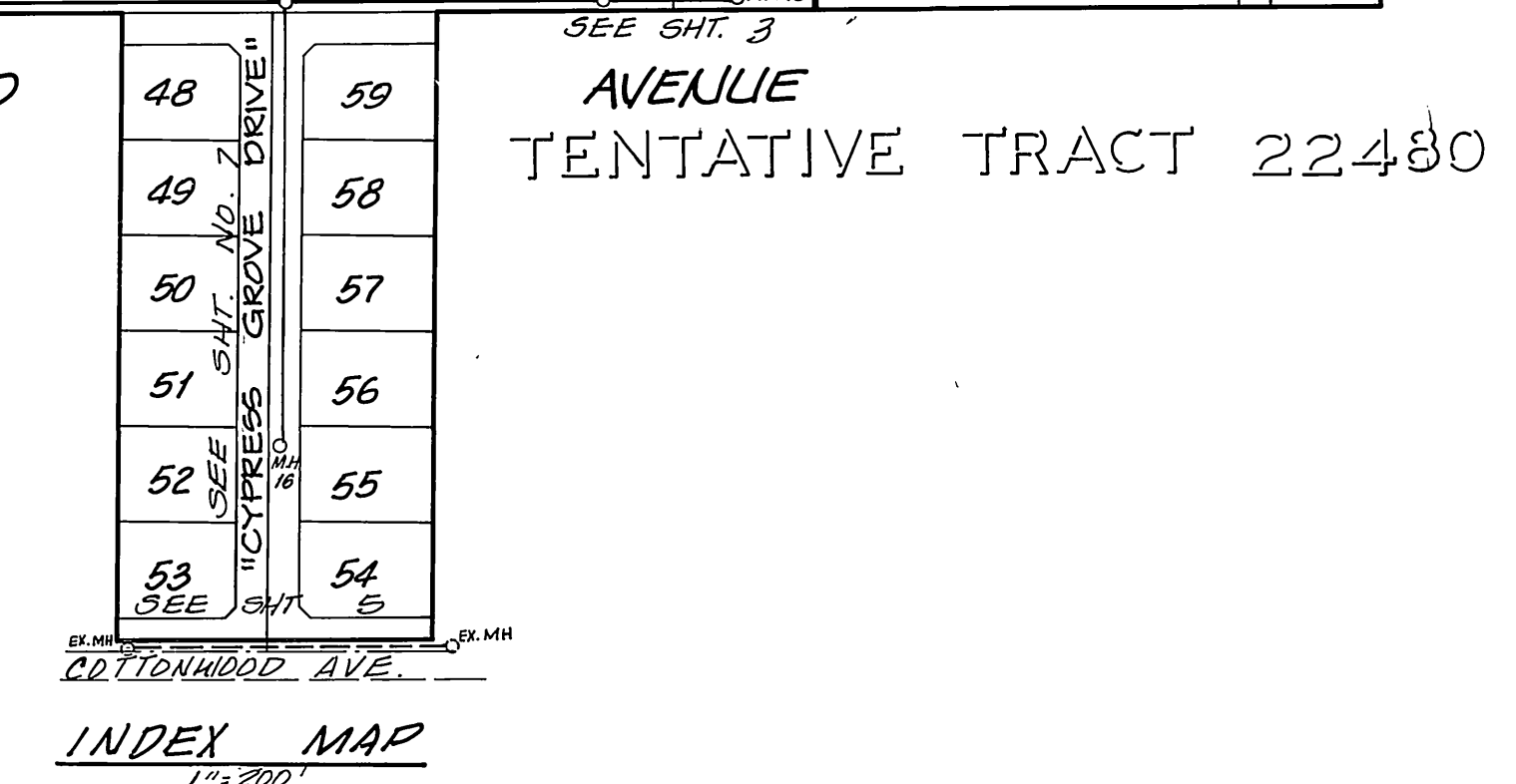
- | | | |
|---|---|-----------|
| ① | CONSTRUCT 8" V.C.P. SEWER MAIN | 4483 L.F. |
| ② | CONSTRUCT 4" V.C.P. HOUSE LATERALS | 2102 L.F. |
| ③ | CONSTRUCT MANHOLE PER CITY OF RIVERSIDE STANDARD NO. 500 | 17 EA. |
| ④ | CONSTRUCT CLEANOUT PER CITY OF RIVERSIDE STANDARD NO. 560 | 2 EA. |



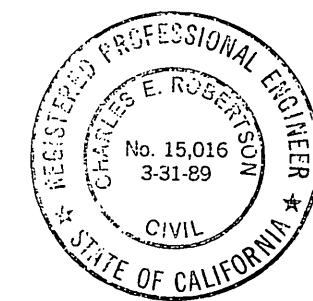
TENT. TR. 21685

SYCAMORE CANYON PARK

LEGEND
④ INDICATES PHASE

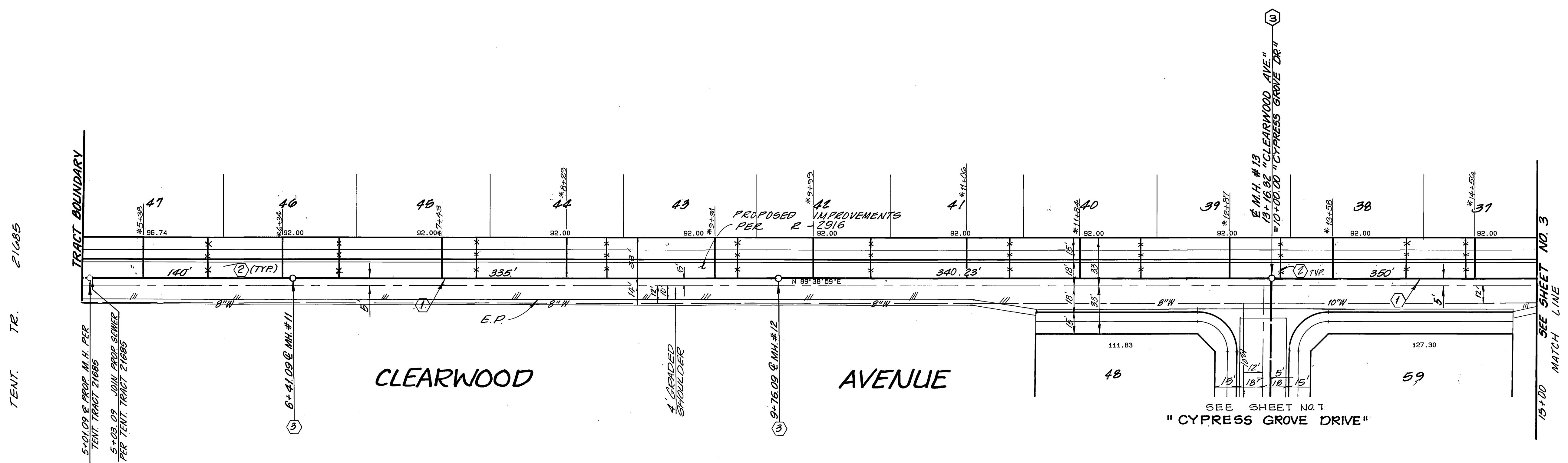
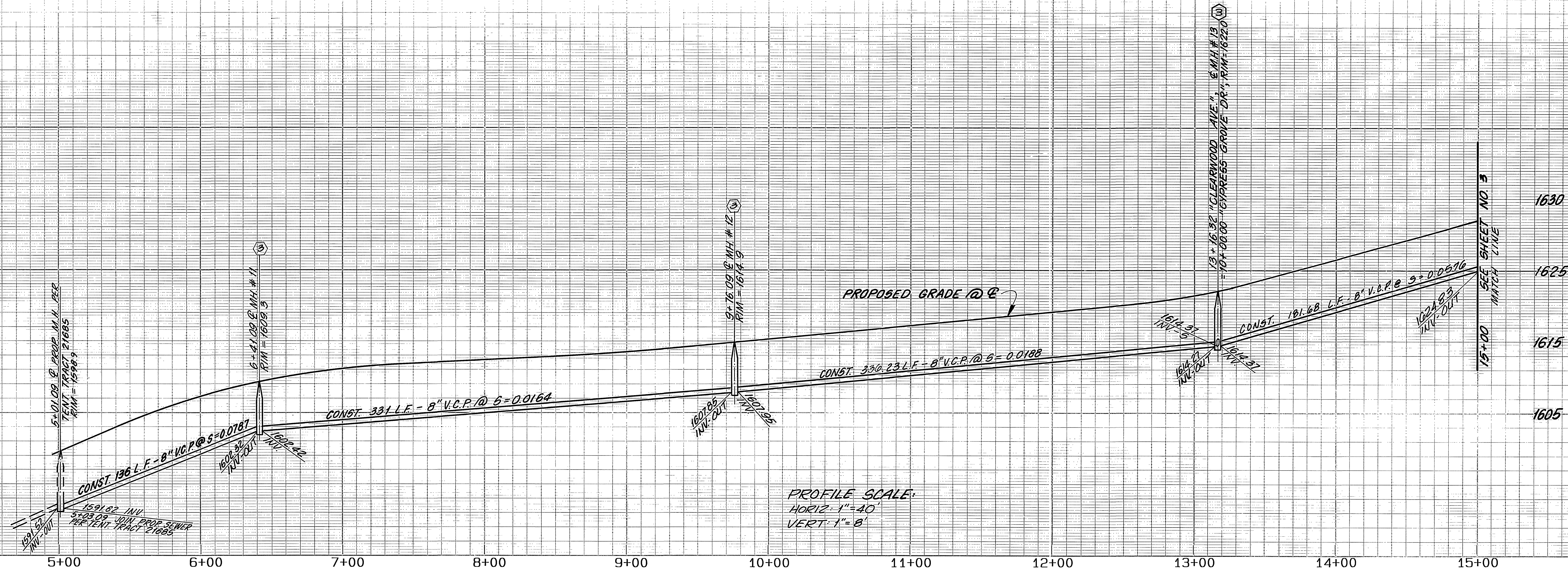


VICINITY MAP
N.T.S.



| | | | | | |
|---|--|--|---|---|---|
| BENCH MARK: BENCH MARK FB-C: P.K. NAIL AND TAG IN N'LY END OF 6' X 15' X 3' HIGH GRANITE ROCK N'LY OF INTERSECTION OF ALESSANDRO BLVD. AND TRAUTWEIN RD. FB735/72. ELEVATION 1627.344 | WESTERN MUNICIPAL WATER DISTRICT REVIEWED BY: <i>[Signature]</i> | HAWKINS, ROBERTSON & ASSOCIATES ENGINEERS & SURVEYORS (714) 684-9522 3764 ELIZABETH ST. RIVERSIDE, CA. 92506 | CITY OF RIVERSIDE PUBLIC WORKS DEPARTMENT | TRACT 21767-1 SEWER PLANS TITLE SHEET | ACCOUNT NO. |
| | | | | | 9-1477 |
| CAUTION: THE ENGINEER PREPARING THESE PLANS WILL NOT BE RESPONSIBLE FOR, OR LIABLE FOR, UNAUTHORIZED CHANGES TO OR USES OF THESE PLANS. ALL CHANGES TO THE PLANS MUST BE IN WRITING AND MUST BE APPROVED BY THE PREPARER OF THESE PLANS. | REGISTRATION EXPIRES: 3-31-89 Charles E. Robertson R.C.E. No. 15,016 | DESIGNED BY: C.E.H. DRAWN BY: J.S. CHECKED BY: C.E.R. DATE: 12/18/87 | APPROVED BY: <i>[Signature]</i> DATE: 12/18/87 PRINCIPAL ENGINEER APPROVED BY: <i>[Signature]</i> DATE: 12/18/87 PUBLIC WORKS DIRECTOR | SHEET 1 OF 7 | HORIZ. SCALE: 1" = 100' VERT. SCALE: 1" = 10' |

INDEXED 9-12-88 LHM



SEE SHEET 1 FOR CONSTRUCTION NOTES

BENCH MARK:
BENCH MARK FB-C: P.K. NAIL AND TAG IN N'LY END OF 6' X 15' X 3" HIGH GRANITE ROCK N'LY OF INTERSECTION OF ALESSANDRO BLVD. AND TRAUTWEIN RD. FB735/72. ELEVATION 1627.344

UNAUTHORIZED CHANGES & USES
CAUTION: THE ENGINEER PREPARING THESE PLANS WILL NOT BE RESPONSIBLE FOR, OR LIABLE FOR, UNAUTHORIZED CHANGES TO OR USES OF THESE PLANS. ALL CHANGES TO THE PLANS MUST BE IN WRITING AND MUST BE APPROVED BY THE PREPARER OF THESE PLANS.

WESTERN MUNICIPAL WATER DISTRICT

REVIEWED BY
[Signature] 11.12.87
DATE

HAWKINS, ROBERTSON & ASSOCIATES
ENGINEERS & SURVEYORS
(714) 684-9522
3784 ELIZABETH ST. RIVERSIDE, CA. 92506

REGISTRATION EXPIRES: 3-31-89
Charles E. Robertson 8-5-87
R.C.E. No. 15,016 DATE

DESIGNED BY *CEH* DRAWN BY *LB* CHECKED BY *CEB*
DATE 12.18.87

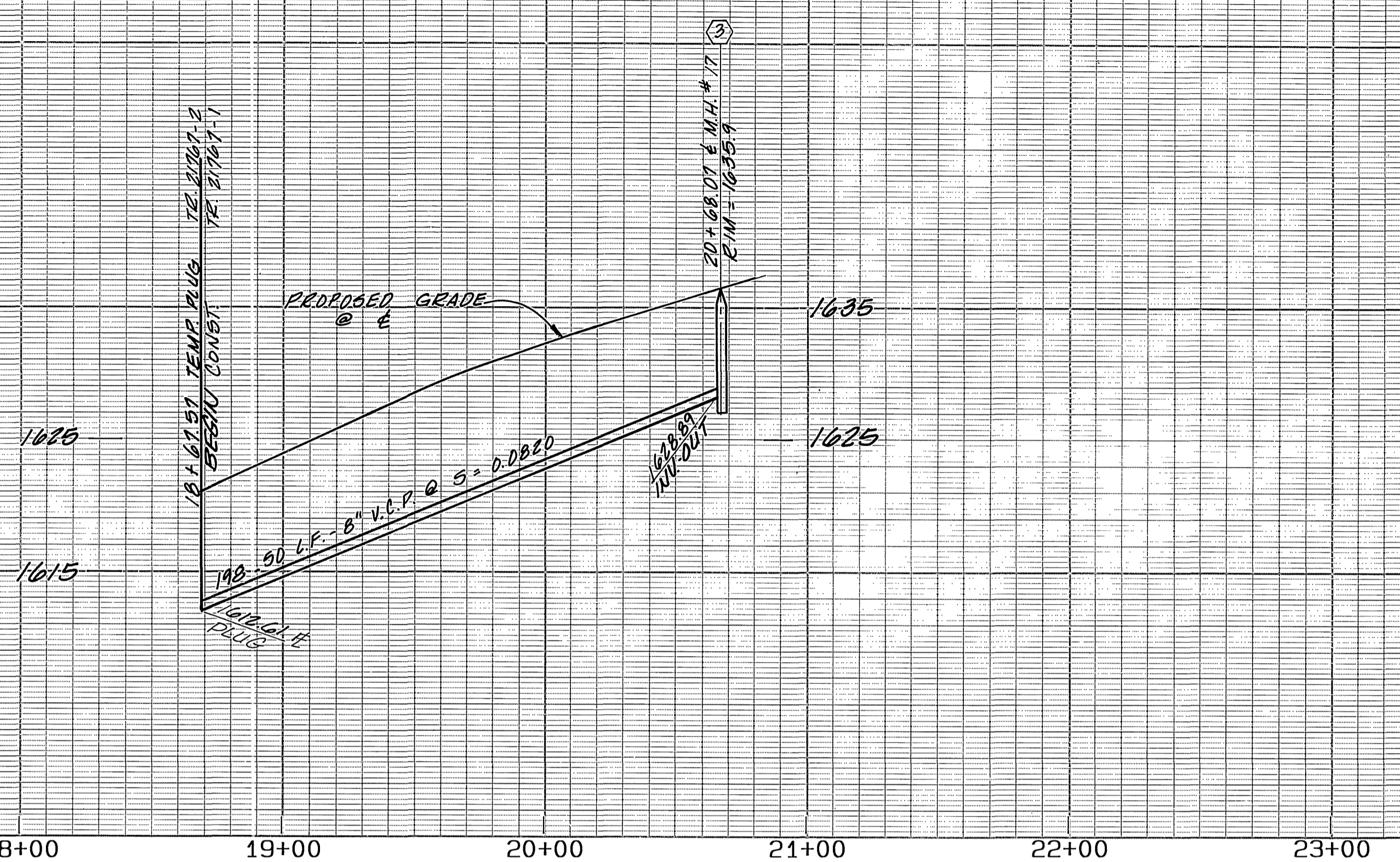
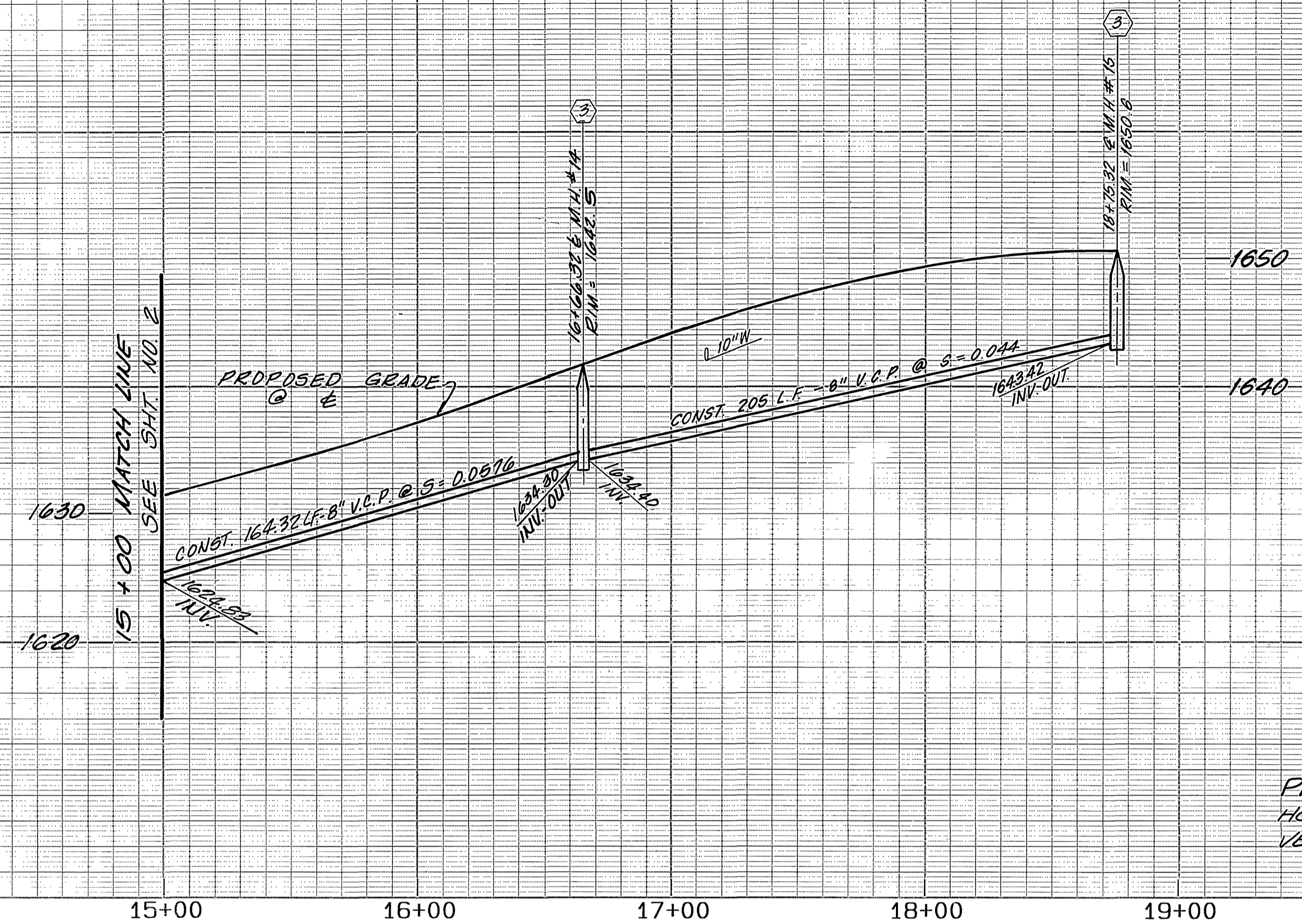
CITY OF RIVERSIDE
PUBLIC WORKS DEPARTMENT

APPROVED BY *[Signature]* DATE 12/18/87
PRINCIPAL ENGINEER
TRAFFIC DIVISION
CHIEF P. W. ENGINEER

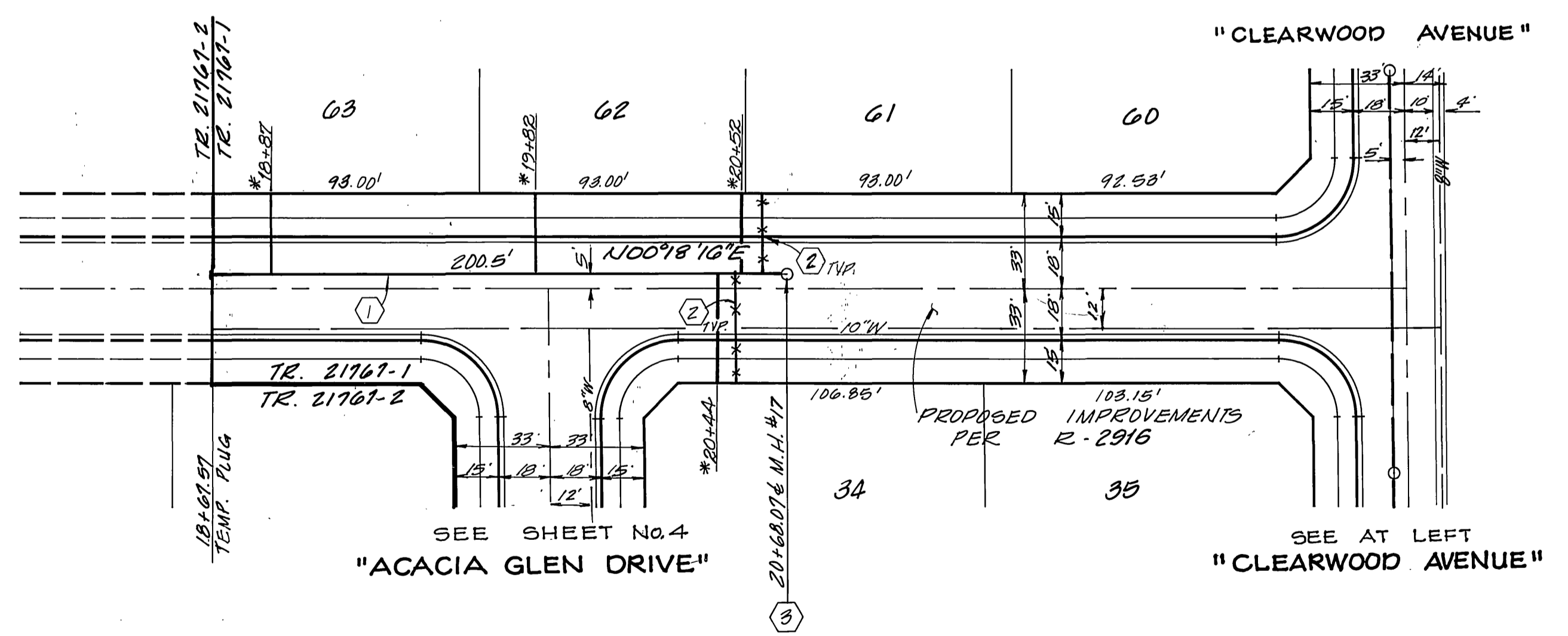
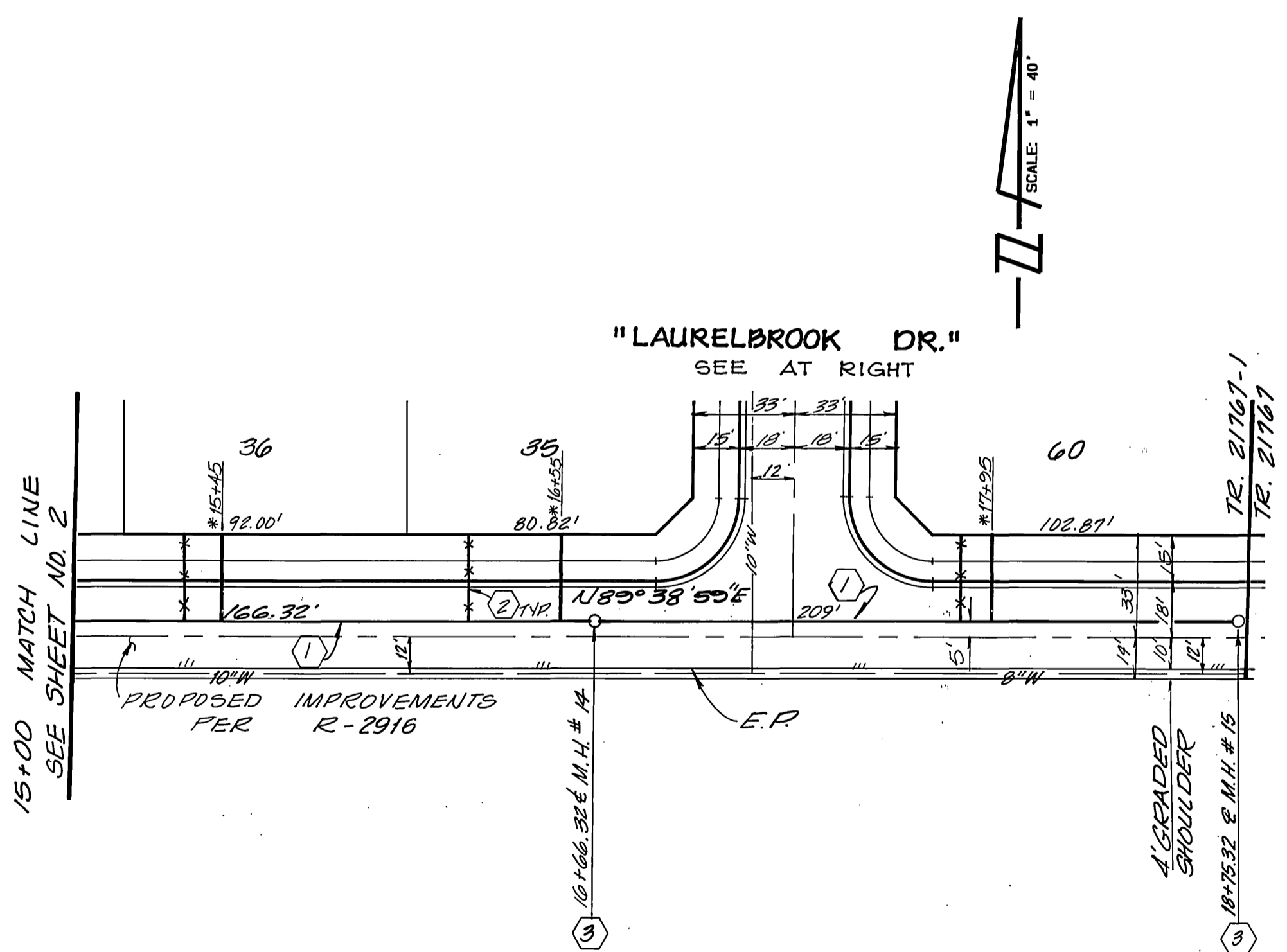
TRACT 21767 - 1
SEWER PLAN AND PROFILE
CLEARWOOD AVENUE
STA. 5+01.09 TO STA. 15+00

HORIZ. SCALE: 1" = 40' VERT. SCALE: 1" = 8'

ACCOUNT NO.
5-1477
SHEET 2 OF 7



PROFILE SCALE:
 HORIZ. 1" = 40'
 VERT. 1" = 8'



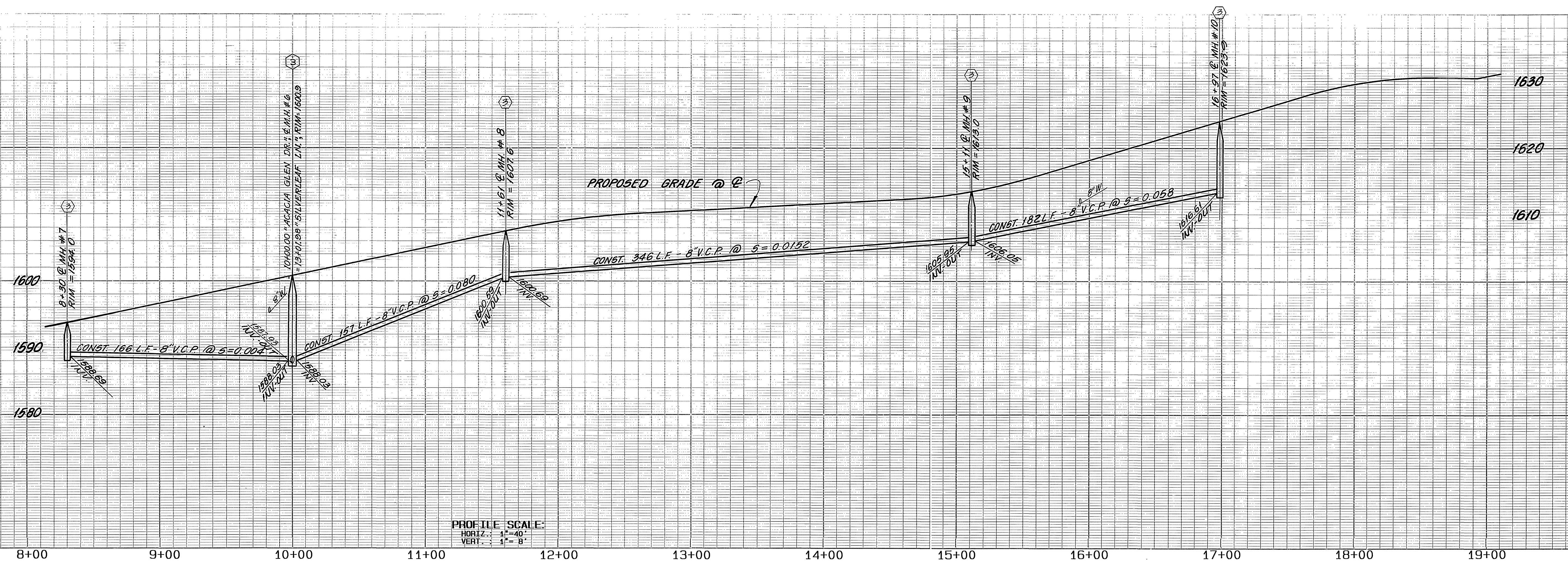
" CLEARWOOD AVENUE "

" LAURELBROOK DRIVE "

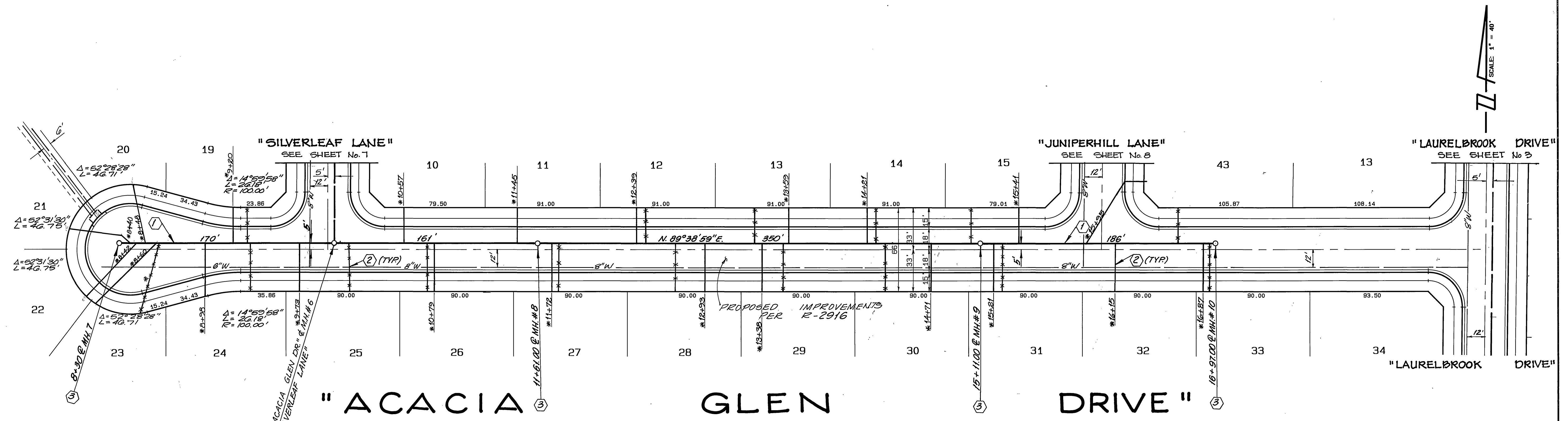


SEE SHEET 1 FOR CONSTRUCTION NOTES
 INDEXED 9-12-88 4H

| | | | | |
|--|--|--|--|--|
| BENCH MARK: BENCH MARK FB-C: P.K. NAIL AND TAG IN N'LY END OF 6' X 15' X 3" HIGH GRANITE ROCK N'LY OF INTERSECTION OF ALESSANDRO BLVD. AND TRAUTWEIN RD. FB735/72. ELEVATION 1627.344 | WESTERN MUNICIPAL WATER DISTRICT REVIEWED BY: <i>[Signature]</i> 12.10.87 DATE | HAWKINS, ROBERTSON & ASSOCIATES ENGINEERS & SURVEYORS (714) 684-9522 3764 ELIZABETH ST. RIVERSIDE, CA. 92506 REGISTRATION EXPIRES: 3-31-89 <i>Charles E. Robertson</i> 8-5-17 R.C.E. No. 15,018 DATE | CITY OF RIVERSIDE PUBLIC WORKS DEPARTMENT APPROVED BY: <i>[Signature]</i> DATE: 12/18/87 PUBLIC WORKS DIRECTOR TRAFFIC DIVISION CHIEF P. W. ENGINEER: <i>[Signature]</i> DATE: 12/18/87 | TRACT 21767-1 SEWER PLAN AND PROFILE "CLEARWOOD AVENUE" STA. 15+00.00 TO STA. 18+15.32 "LAURELBROOK DRIVE" STA. 18+61.57 TO STA. 20+68.07" HORIZ. SCALE: 1" = 40' VERT. SCALE: 1" = 8' ACCOUNT NO. 5-1477 SHEET 3 OF 7 |
| | | | | |



PROFILE SCALE:
 HORIZ. 1" = 40'
 VERT. 1" = 8'



SEE SHEET 1 FOR CONSTRUCTION NOTES

BENCH MARK:
 BENCH MARK FB-C. P.K. NAIL AND TAG IN N'LY END OF 6' X 15' X 3" HIGH GRANITE ROCK N'LY OF INTERSECTION OF ALESSANDRO BLVD. AND TRAUTWEIN RD. FB735/72. ELEVATION 1627.344

UNAUTHORIZED CHANGES & USES
CAUTION: THE ENGINEER PREPARING THESE PLANS WILL NOT BE RESPONSIBLE FOR, OR LIABLE FOR, UNAUTHORIZED CHANGES TO OR USES OF THESE PLANS. ALL CHANGES TO THE PLANS MUST BE IN WRITING AND MUST BE APPROVED BY THE PREPARER OF THESE PLANS.

WESTERN MUNICIPAL WATER DISTRICT

REVIEWED BY: *[Signature]* DATE: 11-12-87

HAWKINS, ROBERTSON & ASSOCIATES
 ENGINEERS & SURVEYORS
 (714) 684-9522
 3764 ELIZABETH ST. RIVERSIDE, CA. 92506

REGISTRATION EXPIRES: 3-31-89
Charles E. Robertson 8-5-87
 R.C.E. No. 15,016

MARK REVISIONS APPR. DATE
 DESIGNED BY C.E.H. DRAWN BY J.S. CHECKED BY C.E.R. DATE 12/18/87
 PRED

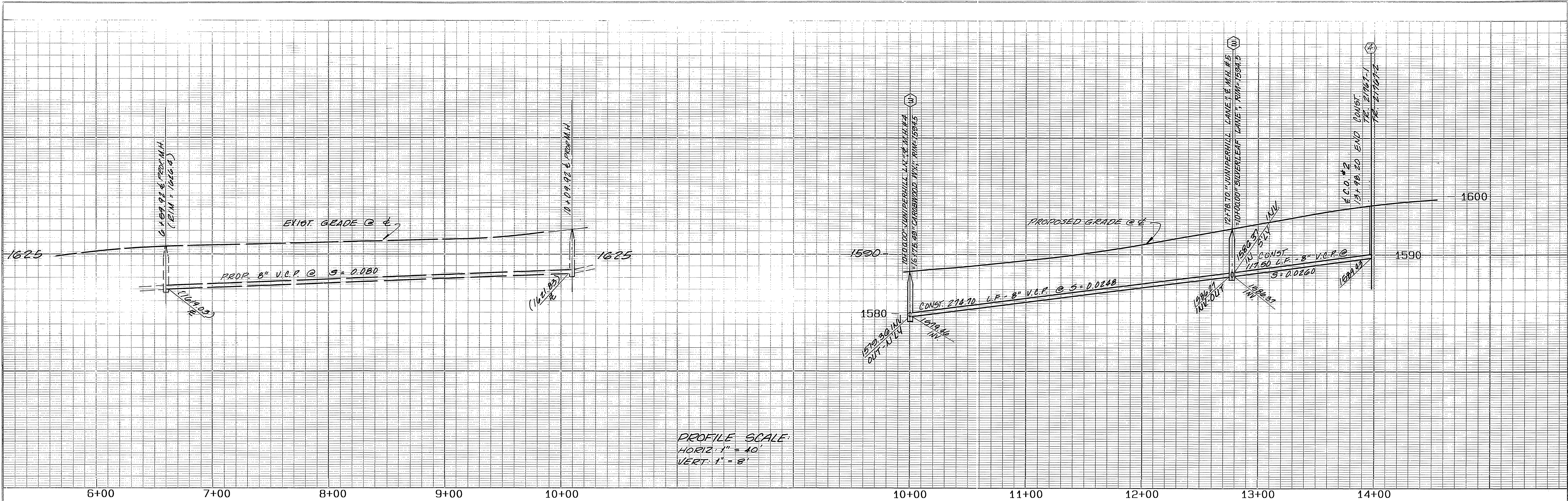
CITY OF RIVERSIDE
 PUBLIC WORKS DEPARTMENT

APPROVED BY: *[Signature]* DATE: 12/18/87
 TRAFFIC DIVISION
 CHIEF P. W. ENGINEER

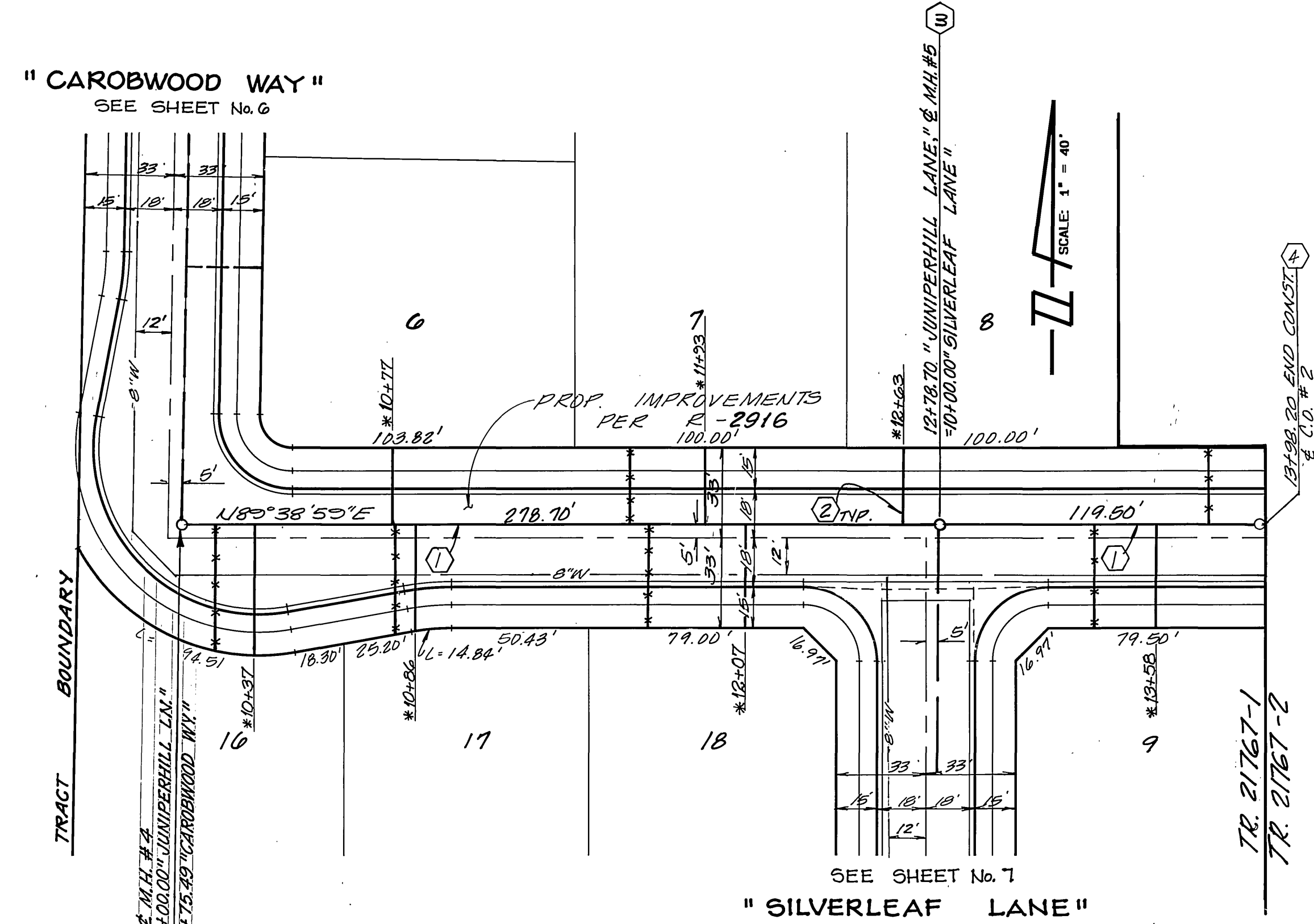
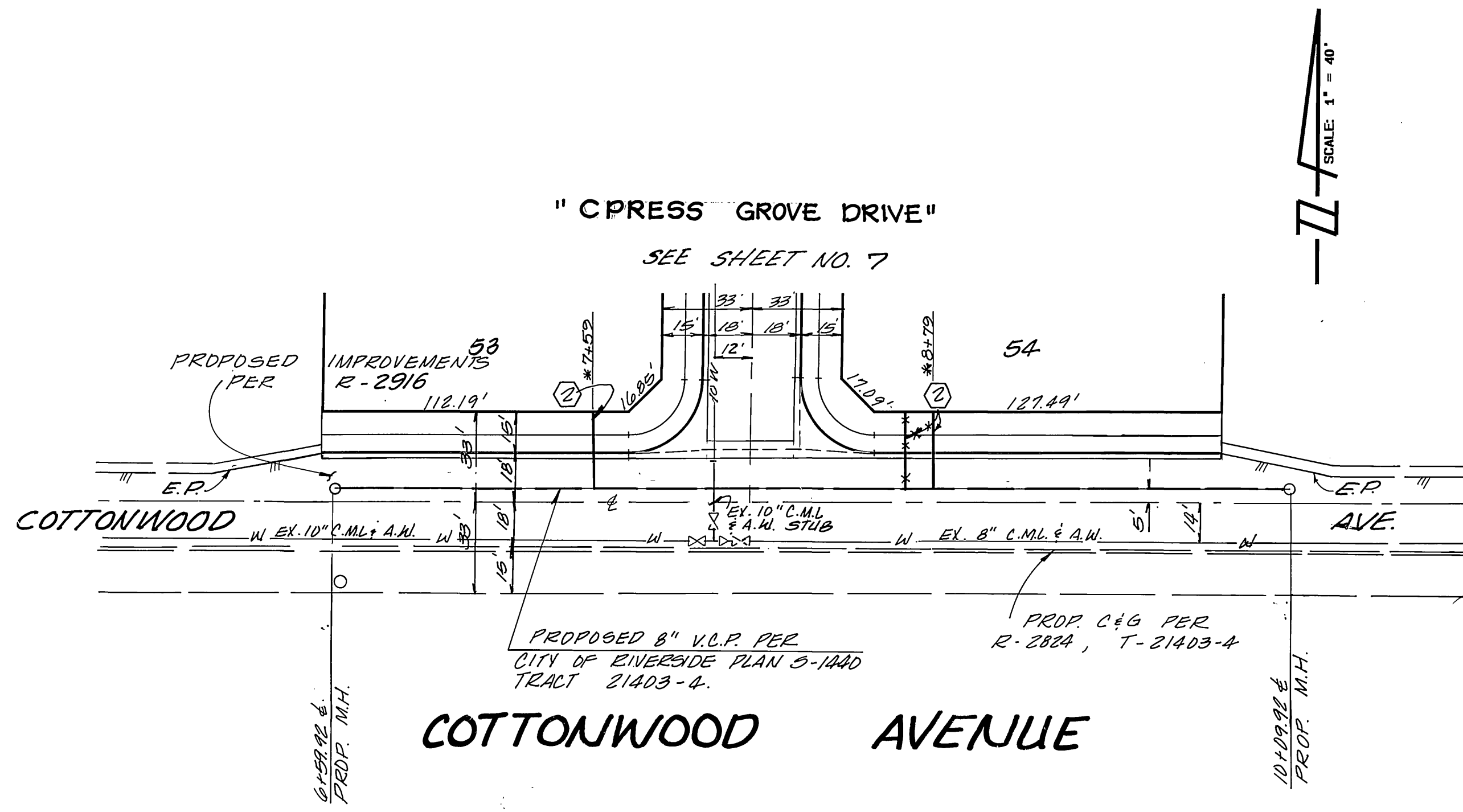
TRACT 21767-1
 SEWER PLAN AND PROFILE
 "ACACIA GLEN DRIVE"
 STA. 8+30.00 TO STA. 16+97.00

HORIZ. SCALE: 1" = 40' VERT. SCALE: 1" = 8'

ACCOUNT NO. 5-1477
 SHEET 4 OF 7



PROFILE SCALE:
 HORIZ. 1" = 40'
 VERT. 1" = 8'



" JUNIPERHILL LANE "

SEE SHEET 1 FOR CONSTRUCTION NOTES: INDEXED 9-12-88 4th

BENCH MARK:
 BENCH MARK FB-C: P.K. NAIL AND TAG IN N'LY END OF 6" X 15" X 3" HIGH GRANITE ROCK N'LY OF INTERSECTION OF ALESSANDRO BLVD. AND TRAUTWEIN RD. FB735/72. ELEVATION 1627.344

UNAUTHORIZED CHANGES & USES
CAUTION: THE ENGINEER PREPARING THESE PLANS WILL NOT BE RESPONSIBLE FOR, OR LIABLE FOR, UNAUTHORIZED CHANGES TO OR USES OF THESE PLANS. ALL CHANGES TO THE PLANS MUST BE IN WRITING AND MUST BE APPROVED BY THE PREPARER OF THESE PLANS.

WESTERN MUNICIPAL WATER DISTRICT

REVIEWED BY: *[Signature]* 11.12.87
 DATE

HAWKINS, ROBERTSON & ASSOCIATES
 ENGINEERS & SURVEYORS
 (714) 984-9522
 3764 ELIZABETH ST. RIVERSIDE, CA. 92506

REGISTRATION EXPIRES: 3-31-89
Charles E. Robertson 8-5-87
 R.C.E. No. 15,016 DATE

MARK REVISIONS APPR. DATE
 DESIGNED BY C.E.H. DRAWN BY K.V. CHECKED BY C.E.R.
 CHIEF P. W. ENGINEER DATE 12/18/87

CITY OF RIVERSIDE
 PUBLIC WORKS DEPARTMENT

APPROVED BY DATE
 PRINCIPAL ENGINEER
 PARK DEPARTMENT
 TRAFFIC DIVISION
 CHIEF P. W. ENGINEER DATE 12/18/87

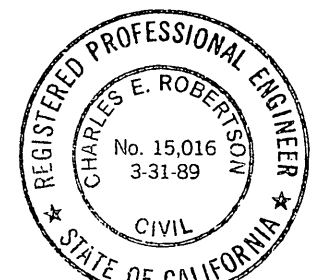
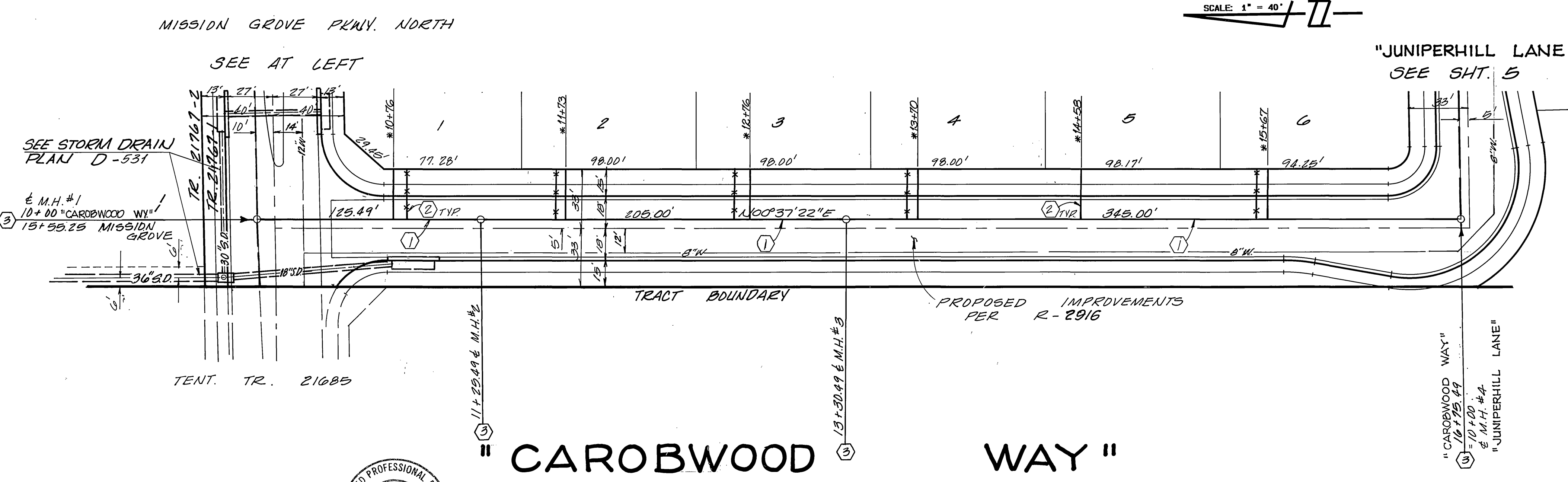
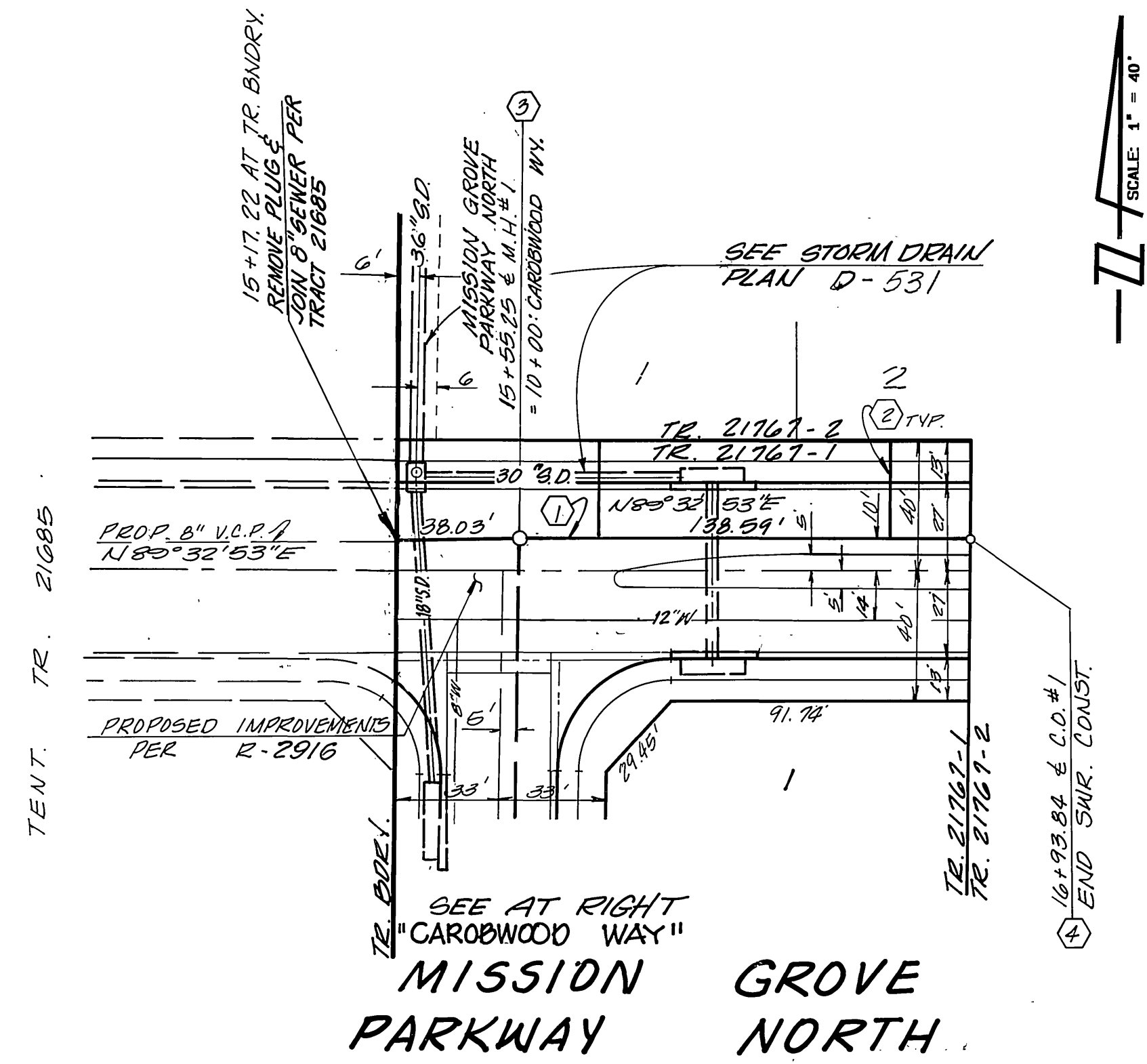
TRACT 21767-1
 SEWER PLAN AND PROFILE
 "COTTONWOOD AVENUE"
 STA. 6+52.82 TO STA. 10+09.82
 "JUNIPERHILL LANE"
 STA. 10+00.00 TO STA. 13+08.20

ACCOUNT NO. 5-1477
 SHEET 5 OF 7





PROFILE SCALE:
 HORIZ: 1" = 40'
 VERT: 1" = 8'



SEE SHEET 1 FOR CONSTRUCTION NOTES

BENCH MARK:
 BENCH MARK PB-C: P.K. NAIL AND TAG IN N'LY END OF 6" X 15" X 3" HIGH GRANITE ROCK N'LY OF INTERSECTION OF ALESSANDRO BLVD. AND TRAUTWEIN RD. FB735/72. ELEVATION 1627.344

UNAUTHORIZED CHANGES & USES
CAUTION: THE ENGINEER PREPARING THESE PLANS WILL NOT BE RESPONSIBLE FOR, OR LIABLE FOR, UNAUTHORIZED CHANGES TO OR USES OF THESE PLANS. ALL CHANGES TO THE PLANS MUST BE IN WRITING AND MUST BE APPROVED BY THE PREPARER OF THESE PLANS.

WESTERN MUNICIPAL WATER DISTRICT

REVIEWED BY: *[Signature]* 11-12-89

HAWKINS, ROBERTSON & ASSOCIATES
 ENGINEERS & SURVEYORS
 (714) 684-9522
 3764 ELIZABETH ST. RIVERSIDE, CA. 92506

REGISTRATION EXPIRES: 3-31-89

Charles E. Robertson R-5-87
 R.C.E. No. 15,016 DATE

MARK REVISIONS APPR. DATE

DESIGNED BY *[Signature]* DRAWN BY *[Signature]* CHECKED BY *[Signature]*

CITY OF RIVERSIDE
 PUBLIC WORKS DEPARTMENT

APPROVED BY DATE APPROVED BY DATE

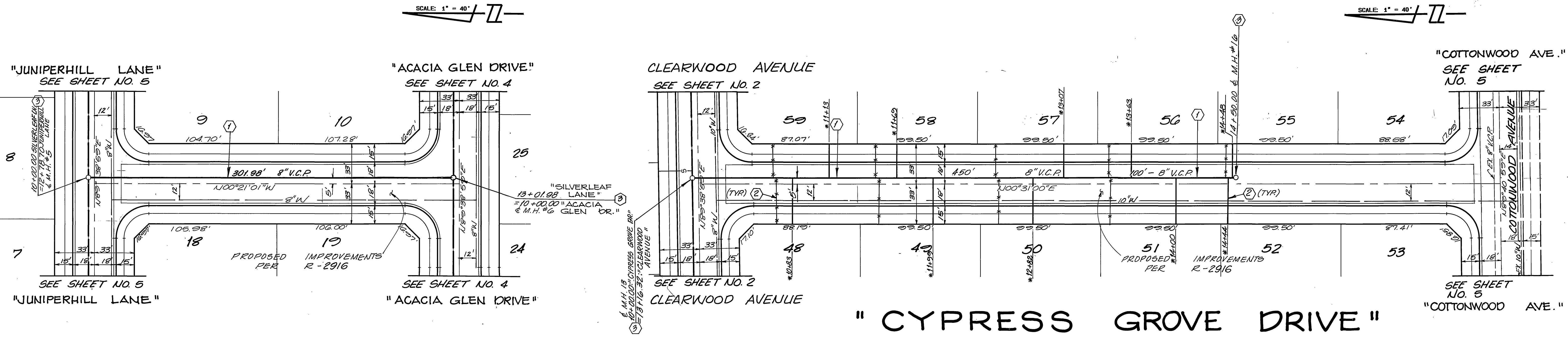
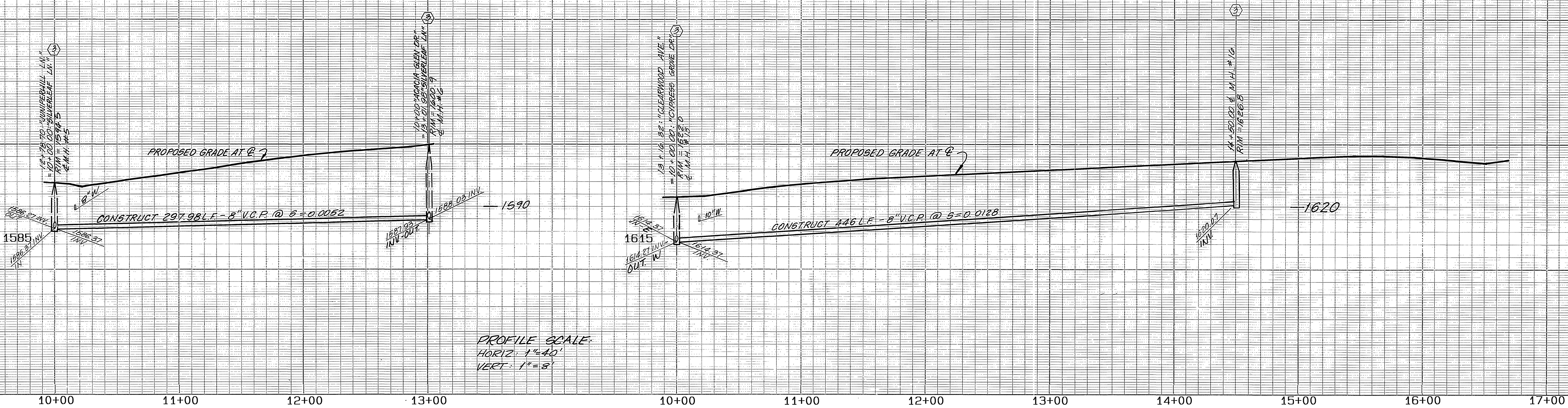
TRAFFIC DIVISION

CHIEF P. W. ENGINEER

TRACT 21767-1
 SEWER PLAN AND PROFILE
 "MISSION GROVE PARKWAY NORTH"
 STA. 15+19.22 TO STA. 16+93.84
 "CAROBWOOD WAY"
 STA. 10+00.00 TO STA. 16+75.49

ACCOUNT NO. 5-1477

SHEET 6 OF 7



"SILVERLEAF LANE"



SEE SHEET 1 FOR CONSTRUCTION NOTES

| | | | | |
|---|---|---|---|--|
| BENCH MARK: BENCH MARK F8-C: P.K. NAIL AND TAG IN N'LY END OF 6' X 15' X 3' HIGH GRANITE ROCK N'LY OF INTERSECTION OF ALESSANDRO BLVD. AND TRAUTWEIN RD. FB735/72. ELEVATION 1627.344. | WESTERN MUNICIPAL WATER DISTRICT REVIEWED BY: <i>[Signature]</i> DATE: 11.12.87 | HAWKINS, ROBERTSON & ASSOCIATES ENGINEERS & SURVEYORS (714) 684-9522 3764 ELIZABETH ST. RIVERSIDE, CA. 92506 REGISTRATION EXPIRES: 3-31-89 Charles E. Robertson R.C.E. No. 15,016 DATE 8-5-87 | CITY OF RIVERSIDE PUBLIC WORKS DEPARTMENT APPROVED BY: <i>[Signature]</i> DATE: 12/18/87 TRAFFIC DIVISION CHIEF P. W. ENGINEER DATE: 12/18/87 | TRACT 21767-1 SEWER PLAN AND PROFILE "SILVERLEAF LANE" STA. 10+00.00 TO STA. 13+01.98 "CYPRESS GROVE DRIVE" STA. 10+00.00 TO STA. 14+50.00 HORIZ. SCALE: 1"=40' VERT. SCALE: 1"=8' ACCOUNT NO. 5-1477 SHEET 7 OF 7 |
| | | | | |

*AS BUILT 10/28/91 R/W INDEXED 9-12-88 44