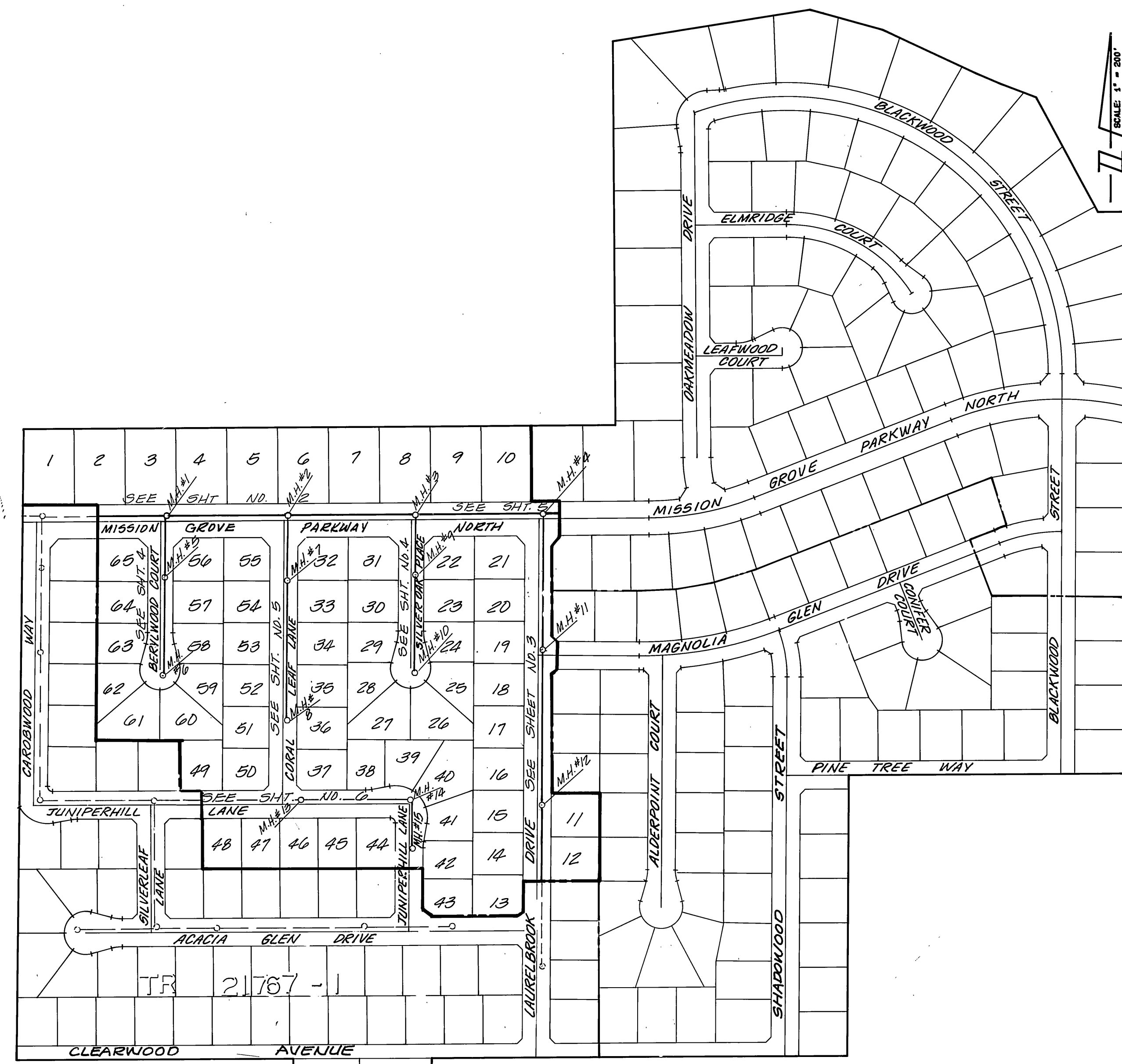


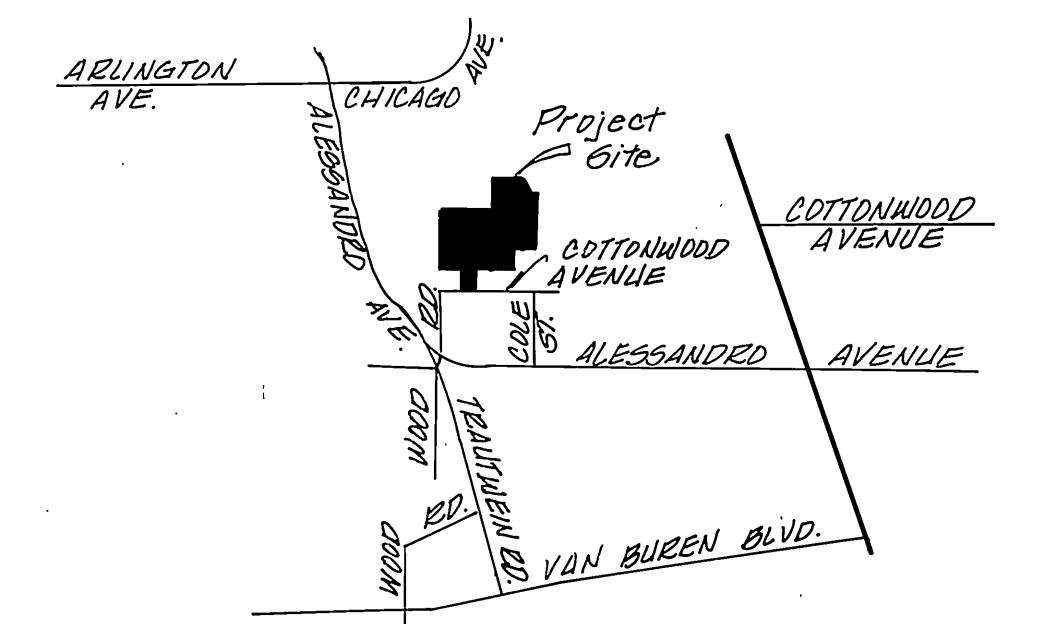
GENERAL NOTES

- IT SHALL BE THE RESPONSIBILITY OF THE CONTRACTOR TO CLEAR THE RIGHT-OF-WAY IN ACCORDANCE WITH THE PROVISIONS OF LAW AS IT AFFECTS EACH UTILITY INCLUDING IRRIGATION LINES AND APPURTENANCES AT NO COST TO THE CITY.
- CONSTRUCTION SHALL BE IN ACCORDANCE WITH THE CITY OF RIVERSIDE DEPARTMENT OF PUBLIC WORKS, STANDARD DRAWINGS, STANDARD DRAWING NO. 10 AND THE STANDARD SPECIFICATIONS FOR PUBLIC WORKS CONSTRUCTION, CURRENT EDITION.
- THE PRIVATE ENGINEER SIGNING THESE PLANS IS RESPONSIBLE FOR ASSURING THE ACCURACY AND ACCEPTABILITY OF THE WORK HEREON. IN THE EVENT OF DISCREPANCIES ARISING DURING CONSTRUCTION, THE PRIVATE ENGINEER SHALL BE RESPONSIBLE FOR DETERMINING AN ACCEPTABLE SOLUTION AND REVISING THE PLANS FOR APPROVAL BY THE CITY.
- QUANTITIES SHOWN ARE FOR INFORMATION ONLY AND THE CITY OF RIVERSIDE IS NOT RESPONSIBLE FOR THEIR ACCURACY.
- THE DEVELOPER SHALL BE RESPONSIBLE FOR PRESERVING OR RE-ESTABLISHING AND REFERENCING SURVEY MONUMENTS DESTROYED, DISTURBED, OR BURIED AS A RESULT OF CONSTRUCTION SHOWN HEREON.
- ALL FLAGGED ELEVATIONS SHALL BE STAKED IN THE FIELD BY THE PRIVATE ENGINEER.
- THE CONTRACTOR SHALL CALL IN A LOCATION REQUEST TO UNDERGROUND SERVICE ALERT (USA), PHONE NO. 1-800-422-4333, TWO WORKING DAYS BEFORE DIGGING. NO CONSTRUCTION PERMIT WILL BE ISSUED BY THE PUBLIC WORKS DEPARTMENT INVOLVING EXCAVATION FOR UNDERGROUND FACILITIES UNLESS THE APPLICANT HAS BEEN PROVIDED AN UNQUIRY IDENTIFICATION NUMBER BY U.S.A.
- CONTRACTOR IS TO VERIFY EXISTING SEWER ELEVATION PRIOR TO CONSTRUCTION.
- LOCATION OF LATERALS TO BE DETERMINED IN THE FIELD AT THE DIRECTION OF THE OWNER. AVOID CONFLICT WITH PROPOSED AND/OR EXISTING FACILITIES.
- NO FINISHED FLOOR ELEVATION SHALL BE LESS THAN 4" ABOVE THE SEWER FLOW LINE AT POINT OF CONNECTION WITHOUT HAVING A PROPER BACKWATER VALVE INSTALLED IN THE LATERAL.
- THE SEWER CONTRACTOR SHALL ADJUST MANHOLES TO FINAL GRADE AFTER PAVING IS COMPLETED.
- A PLUG SHALL BE INSTALLED AND WILL REMAIN IN PLACE WHERE THE NEW SEWER CONNECTS WITH THE EXISTING SEWER UNTIL THE NEW SEWER IS ACCEPTED BY THE CITY.



CONSTRUCTION NOTES

- ① CONSTRUCT 8" V.C.P. SEWER MAIN 3780
- ② CONSTRUCT 4" V.C.P. HOUSE LATERALS 3749 L.F.
- ③ CONSTRUCT MANHOLE PER CITY OF RIVERSIDE STANDARD NO. 500 2210 L.F.
2043
15 EA.



VICINITY MAP
N.T.S.

INDEX MAP
N.T.S.



Reviewed by Western Municipal Water District.
[Signature] 11.12.87
DATE

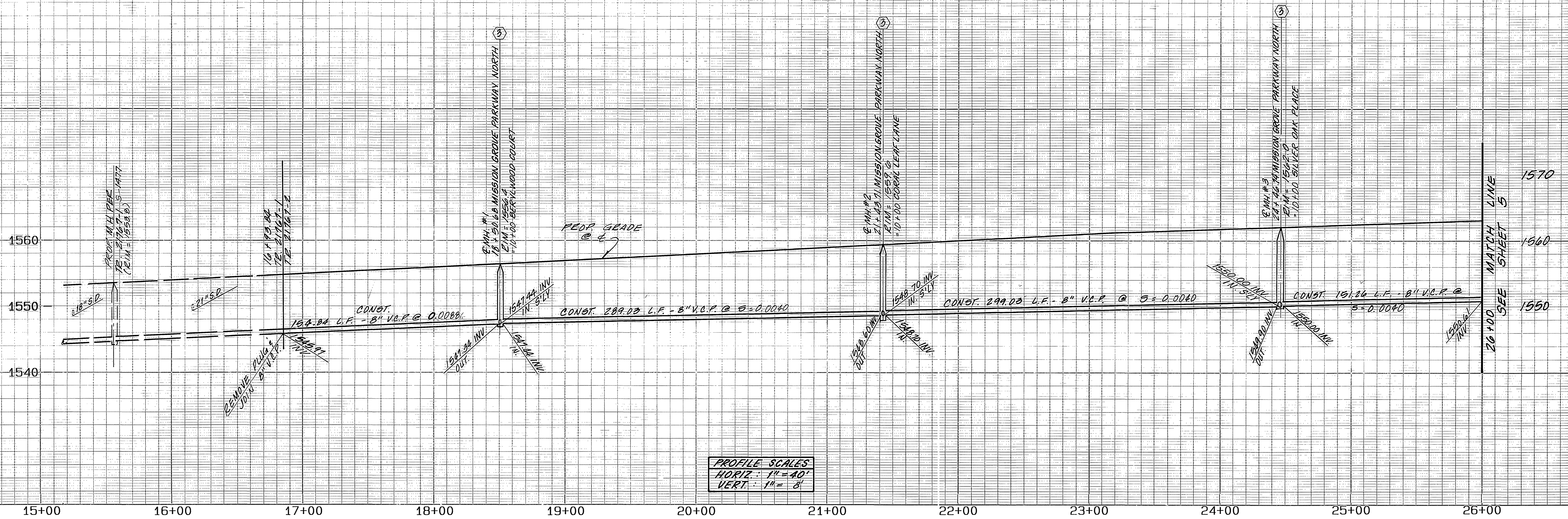
HAWKINS, ROBERTSON & ASSOCIATES
ENGINEERS & SURVEYORS
(714) 684-9522
3764 ELIZABETH ST. RIVERSIDE, CA. 92506
REGISTRATION EXPIRES: 3-31-89
[Signature] Charles E. Robertson 8-13-87
R.C.E. No. 15,016 DATE

CITY OF RIVERSIDE
PUBLIC WORKS DEPARTMENT
APPROVED: *[Signature]* DATE: 11/19/88
PRINCIPAL ENGINEER
TRAFFIC DIVISION
DESIGNED BY: *[Signature]* DRAWN BY: *[Signature]* CHECKED BY: *[Signature]* DATE: 11/19/88

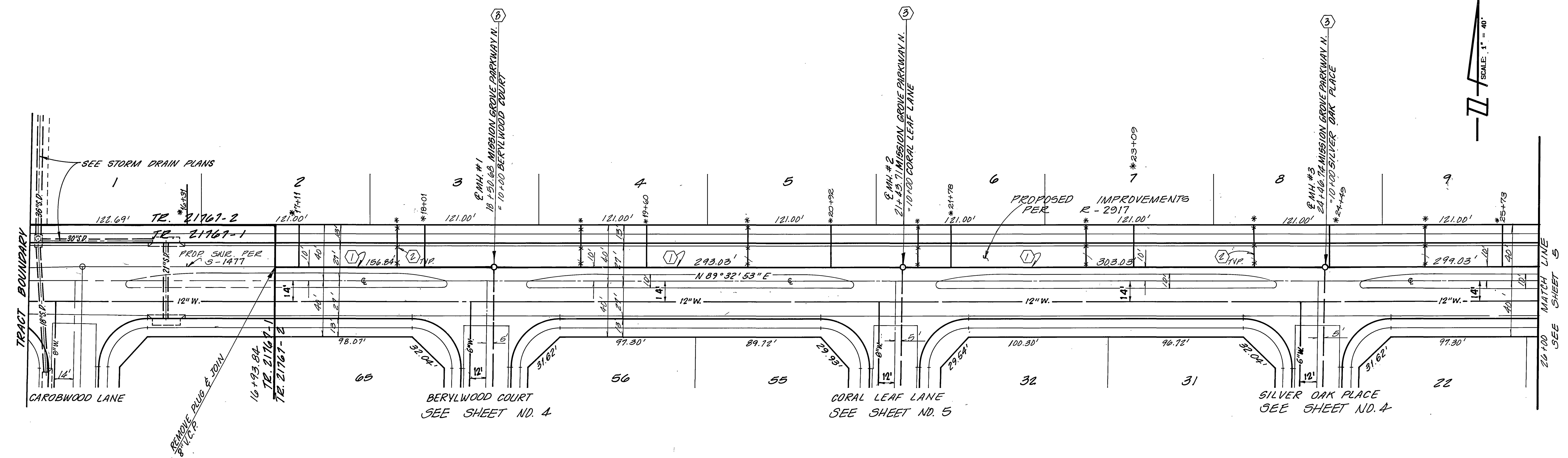
TRACT 21767-2
SEWER PLANS TITLE SHEET
HORIZ. SCALE: 1" = 200' VERT. SCALE: 1" = 10'
TITLE SHEET FOR SEWER PLANS - 13(0,0)PF: 3806 1882, 27-May-87 10:59 AM / 3806.3-12

ACCOUNT NO.
S-1478
SHEET 1 OF 6

BENCH MARK:
BENCH MARK F8-C: P.K. NAIL AND TAG IN N'LY END OF 6' X 15' X 3" HIGH GRANITE ROCK N'LY OF INTERSECTION OF ALESSANDRO BLVD. AND TRAUTWEIN RD. FB735/72. ELEVATION 1627.344
UNAUTHORIZED CHANGES & USES
CAUTION: THE ENGINEER PREPARING THESE PLANS WILL NOT BE RESPONSIBLE FOR, OR LIABLE FOR, UNAUTHORIZED CHANGES TO OR USES OF THESE PLANS. ALL CHANGES TO THE PLANS MUST BE IN WRITING AND MUST BE APPROVED BY THE PREPARER OF THESE PLANS.



PROFILE SCALES
 HORIZ.: 1" = 40'
 VERT.: 1" = 8'



MISSION GROVE PARKWAY NORTH

BENCH MARK:
 BENCH MARK F8-C: P.K. NAIL AND TAG IN N'LY END OF 6' X 15' X 3' HIGH GRANITE ROCK N'LY OF INTERSECTION OF ALESSANDRO BLVD. AND TRAUTWEIN RD. FB735/72. ELEVATION 1627.344

UNAUTHORIZED CHANGES & USES
CAUTION: THE ENGINEER PREPARING THESE PLANS WILL NOT BE RESPONSIBLE FOR OR LIABLE FOR UNAUTHORIZED CHANGES TO OR USES OF THESE PLANS. ALL CHANGES TO THE PLANS MUST BE IN WRITING AND MUST BE APPROVED BY THE PREPARER OF THESE PLANS.

WESTERN MUNICIPAL WATER DISTRICT

REVIEWED BY: *[Signature]* 11.12.87
 DATE

HAWKINS, ROBERTSON & ASSOCIATES
 ENGINEERS & SURVEYORS
 (714) 684-9522
 3764 ELIZABETH ST. RIVERSIDE, CA. 92506

REGISTRATION EXPIRES: 3-31-89
 Charles E. Robertson 8-13-87
 R.C.E. No. 15,016 DATE

MARK REVISIONS APPR. DATE
 DESIGNED BY: C.E.H. DRAWN BY: R.Y. CHECKED BY: C.E.E. CHIEF P. W. ENGINEER
 DATE 1/19/88

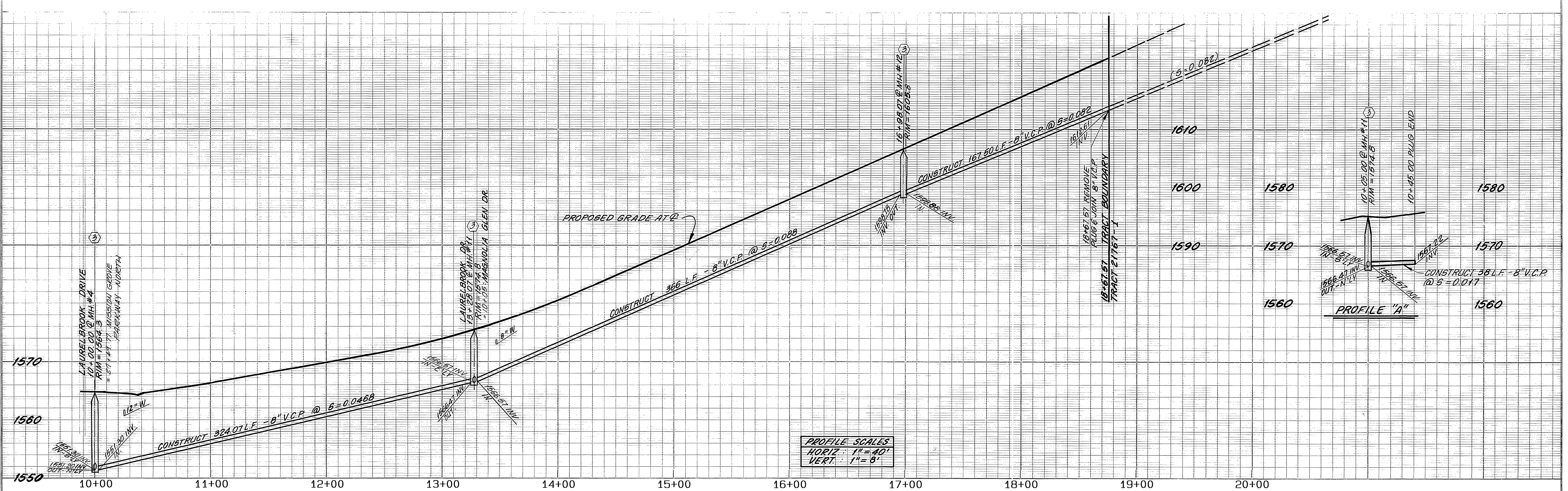
CITY OF RIVERSIDE
 PUBLIC WORKS DEPARTMENT

APPROVED BY: *[Signature]*
 PUBLIC WORKS DIRECTOR

DATE 1/19/88

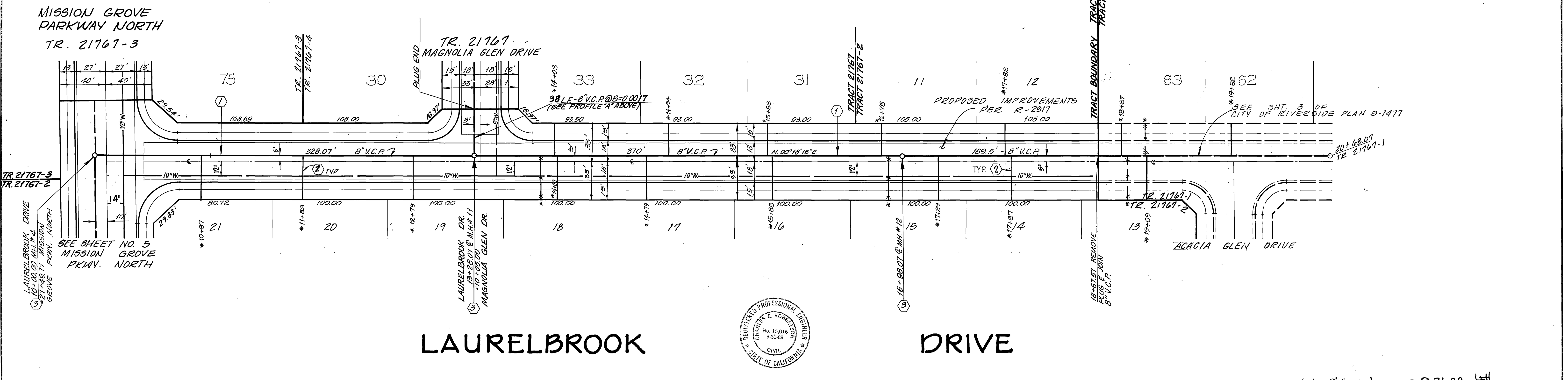
TRACT 21767-2
 SEWER PLAN AND PROFILE
 MISSION GROVE PARKWAY NORTH
 STA. 16+93.84 TO STA. 20+00.00

ACCOUNT NO.
5-1478
 SHEET 2 OF 6



PROFILE SCALES
 HORIZ. 1" = 40'
 VERT. 1" = 8'

SCALE 1" = 40'



LAURELBROOK DRIVE



BENCH MARK:
 BENCH MARK F8-C: P.K. NAIL AND TAG IN N'LY END OF 6' X 15' X 3' HIGH GRANITE ROCK N'LY OF INTERSECTION OF ALESSANDRO BLVD. AND TRAUTWEIN RD. FB735/72. ELEVATION 1627.344

CAUTION: THE ENGINEER PREPARING THESE PLANS WILL NOT BE RESPONSIBLE FOR OR LIABLE FOR UNAUTHORIZED CHANGES TO OR USES OF THESE PLANS. ALL CHANGES TO THE PLANS MUST BE IN WRITING AND MUST BE APPROVED BY THE PREPARER OF THESE PLANS.

UNAUTHORIZED CHANGES & USES

WESTERN MUNICIPAL WATER DISTRICT

REVIEWED BY: *[Signature]*

DATE: 11-12-87

HAWKINS, ROBERTSON & ASSOCIATES
 ENGINEERS & SURVEYORS
 (714) 684-9522
 3764 ELIZABETH ST. RIVERSIDE, CA. 92506

REGISTRATION EXPIRES: 3-31-89

8-13-87

R.C.E. No. 15,016

MARK REVISIONS APPR. DATE

DESIGNED BY: C.E.H. DRAWN BY: J.S. CHECKED BY: C.E.H. DATE: 1/19/88

CITY OF RIVERSIDE
 PUBLIC WORKS DEPARTMENT

APPROVED BY: *[Signature]* DATE: 1/19/88

PRINCIPAL ENGINEER: *[Signature]*

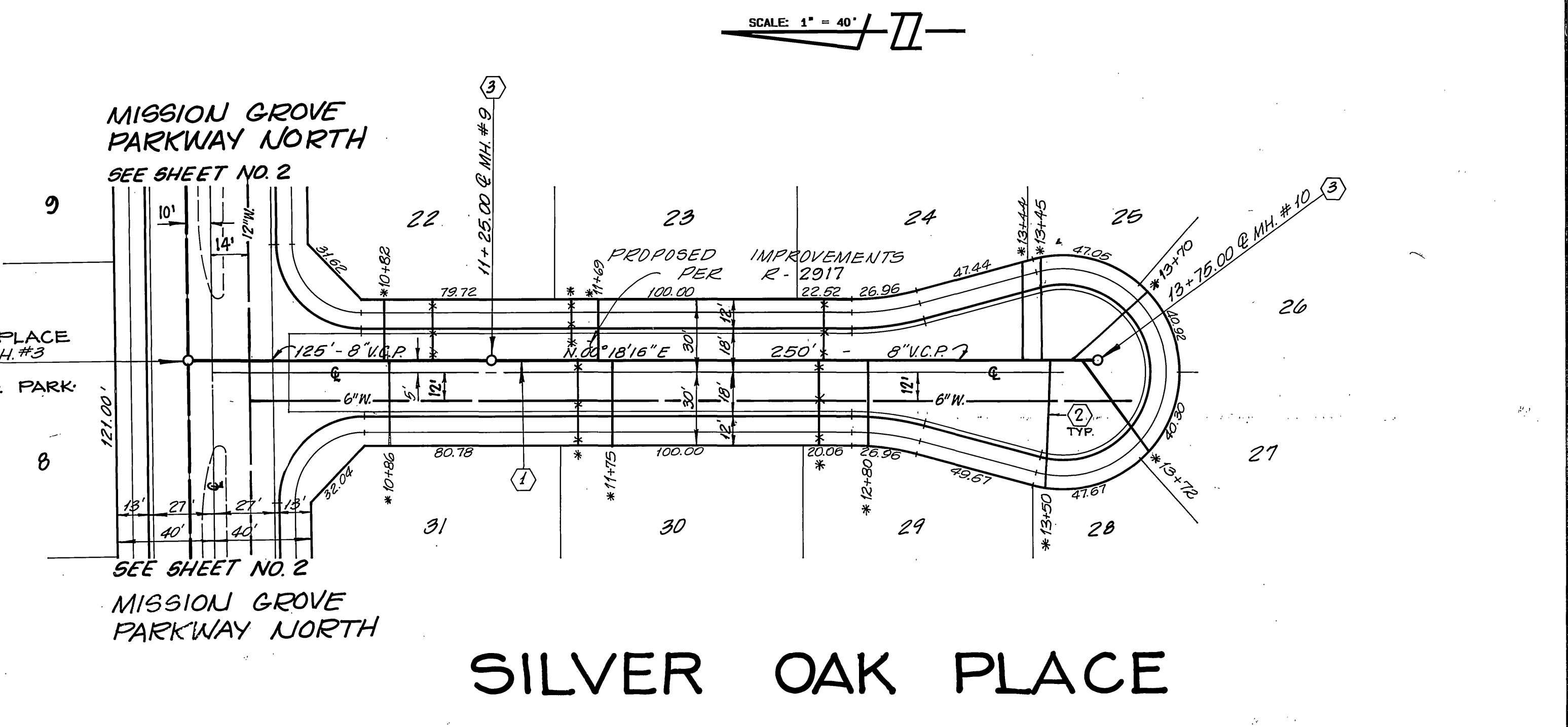
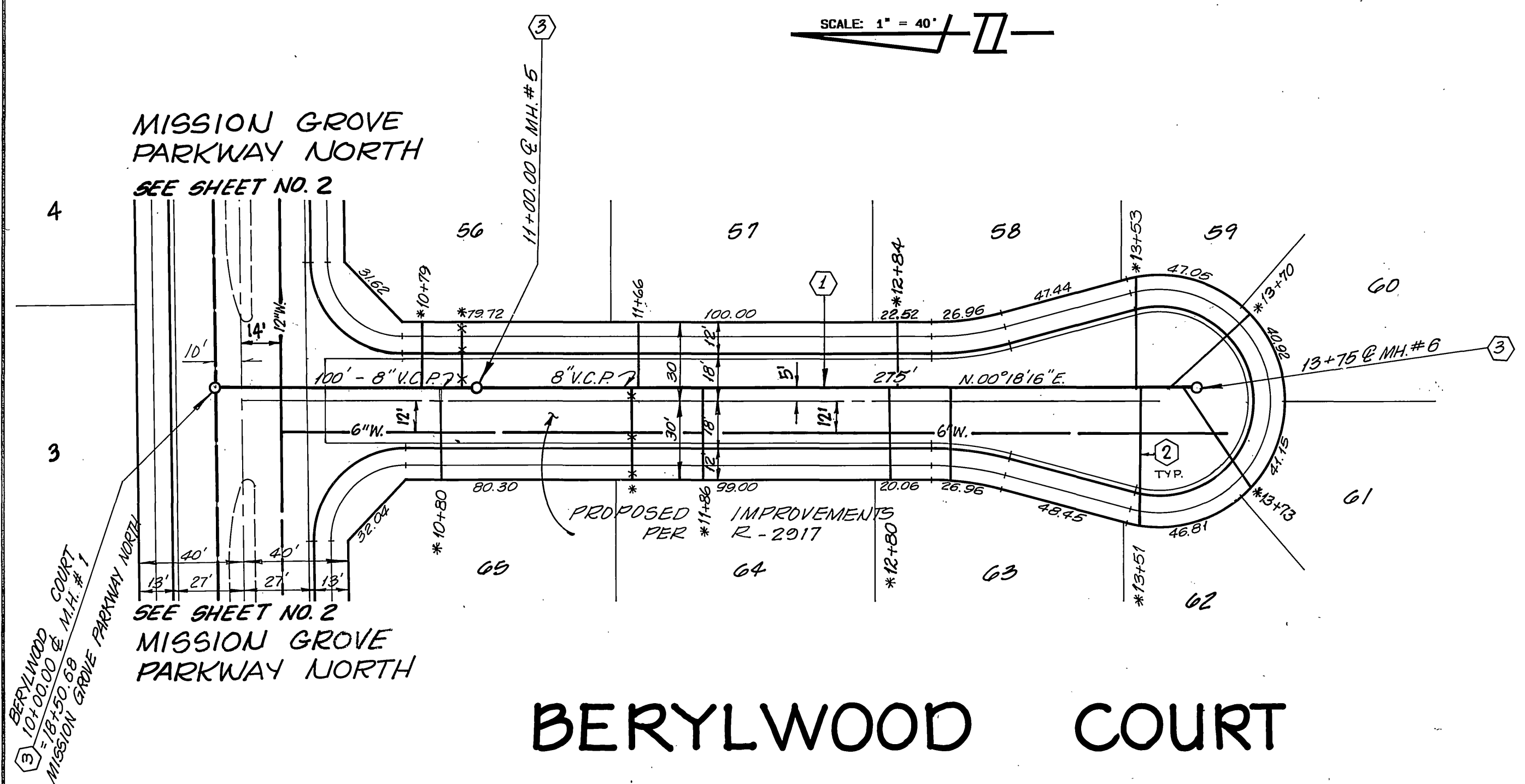
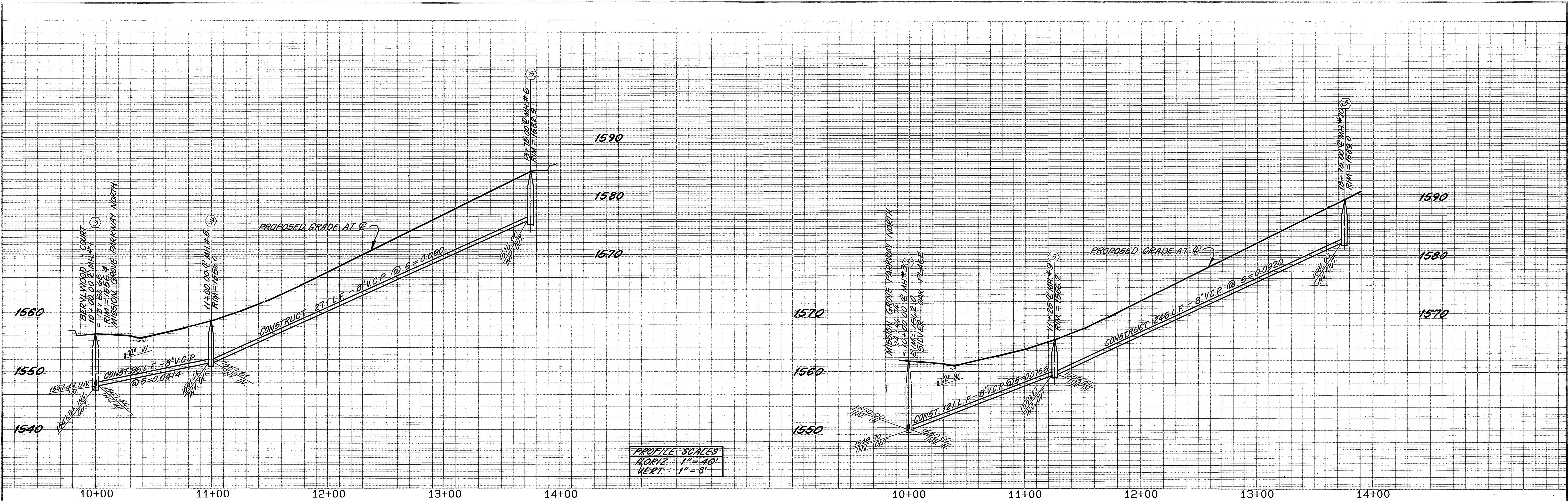
Traffic Division

TRACT 21767-2
 SEWER PLAN AND PROFILE
 LAURELBROOK DRIVE
 STA. 10+00.00 TO STA. 18+61.57

HORIZ. SCALE: 1" = 40' VERT. SCALE: 1" = 8'

ACCOUNT NO. S-1478

SHEET 3 OF 6



BENCH MARK:
 BENCH MARK FB-C: P.K. NAIL AND TAG IN N'LY END OF 6' X 15' X 3" HIGH GRANITE ROCK N'LY OF INTERSECTION OF ALESSANDRO BLVD. AND TRAUTWEIN RD. FB75/72. ELEVATION 1627.344

UNAUTHORIZED CHANGES & USES
CAUTION: THE ENGINEER PREPARING THESE PLANS WILL NOT BE RESPONSIBLE FOR OR LIABLE FOR, UNAUTHORIZED CHANGES TO OR USES OF THESE PLANS. ALL CHANGES TO THE PLANS MUST BE IN WRITING AND MUST BE APPROVED BY THE PREPARER OF THESE PLANS.

WESTERN MUNICIPAL WATER DISTRICT

REVIEWED BY: *[Signature]*

DATE: 11.12.87

HAWKINS, ROBERTSON & ASSOCIATES
 ENGINEERS & SURVEYORS
 (714) 684-9522
 3764 ELIZABETH ST. RIVERSIDE, CA. 92506

REGISTRATION EXPIRES: 3-31-89

Charles E. Robertson 8-13-87
 R.C.E. No. 15,016 DATE

CITY OF RIVERSIDE
 PUBLIC WORKS DEPARTMENT

APPROVED BY: *[Signature]* DATE: 1/19/88

PRINCIPAL ENGINEER: *[Signature]*

PARK DEPARTMENT: TRAFFIC DIVISION

CHIEF P. W. ENGINEER: *[Signature]* DATE: 1/19/88

TRACT 21767-2
 SEWER PLAN AND PROFILE
 BERYLWOOD COURT
 STA. 10+00.00 TO STA. 13+75.00
 SILVER OAK PLACE
 STA. 10+00.00 TO STA. 13+75.00

HORIZ. SCALE: 1"=40' VERT. SCALE: 1"=8'

ACCOUNT NO. **S-1478**

SHEET 4 OF 6

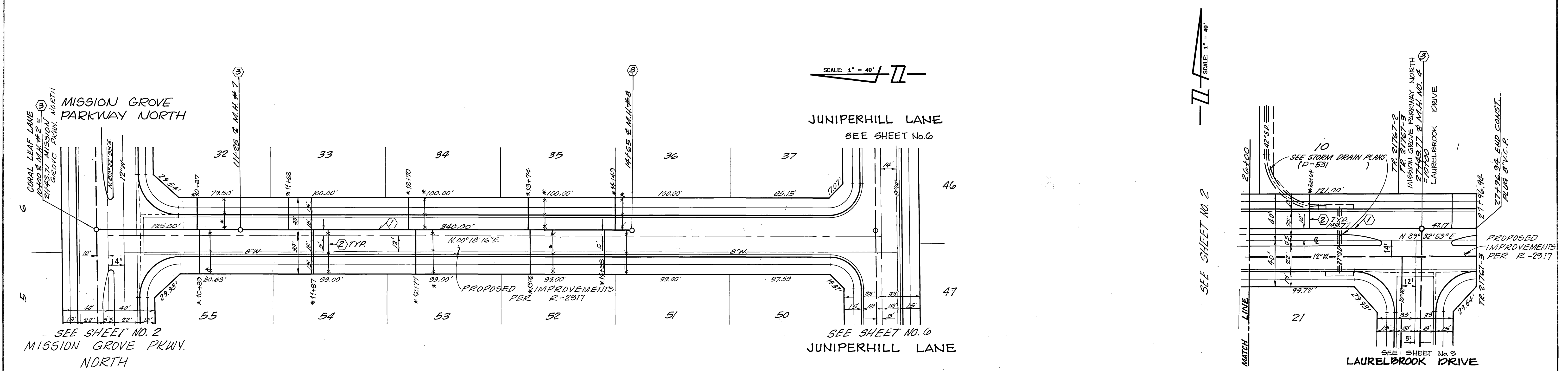
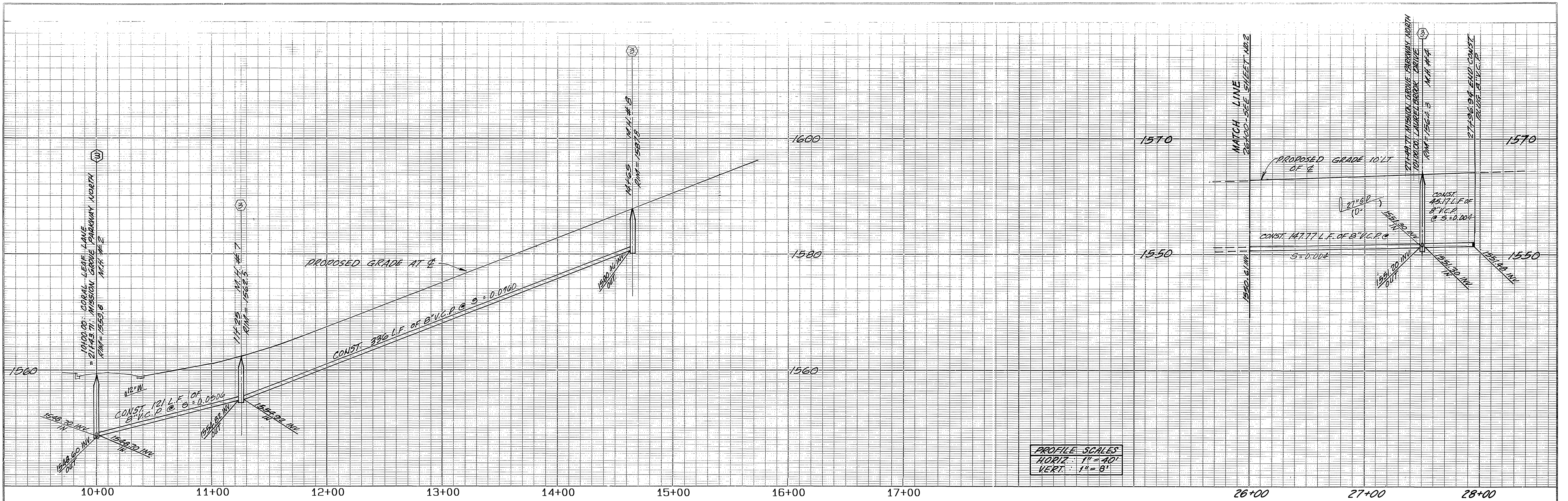
INDEXED 9-21-88 LH

*AS BUILT 11/10/84 RPH

DESIGNED BY: C.E.H. DRAWN BY: J.S. CHECKED BY: C.E.H. DATE: 1/19/88

PREP 1/19/88

** SEWER P&P SHT. #3 / PH. 2 - 5 (0, 39) PF: 3806 513 02-Jun-87 02:27 PM / 3806.3-12



CORAL LEAF LANE

MISSION GROVE PARKWAY NORTH

BENCH MARK:
 BENCH MARK FB-C: P.K. NAIL AND TAG IN N'LY END OF 6' X 15' X 3' HIGH GRANITE ROCK N'LY OF INTERSECTION OF ALESSANDRO BLVD. AND TRAUTWEIN RD. FB735/72. ELEVATION 1627.344

UNAUTHORIZED CHANGES & USES
CAUTION: THE ENGINEER PREPARING THESE PLANS WILL NOT BE RESPONSIBLE FOR, OR LIABLE FOR, UNAUTHORIZED CHANGES TO OR USES OF THESE PLANS. ALL CHANGES TO THE PLANS MUST BE IN WRITING AND MUST BE APPROVED BY THE PREPARER OF THESE PLANS.

WESTERN MUNICIPAL WATER DISTRICT

REVIEWED BY: *[Signature]* 11-17-87 DATE

HAWKINS, ROBERTSON & ASSOCIATES
 ENGINEERS & SURVEYORS
 (714) 684-9522
 3764 ELIZABETH ST. RIVERSIDE, CA. 92506

REGISTRATION EXPIRES: 3-31-89

Charles E. Robertson 8-13-87 DATE
 R.C.E. No. 15,016

CITY OF RIVERSIDE
 PUBLIC WORKS DEPARTMENT

APPROVED BY: *[Signature]* DATE: 1/19/88
 PRINCIPAL ENGINEER

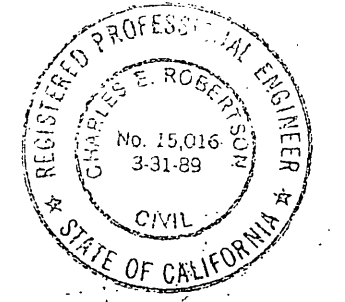
TRAFFIC DIVISION
 CHIEF P. W. ENGINEER

TRACT 21767-2
 SEWER PLAN AND PROFILE
 CORAL LEAF LANE
 STA. 10+00.00 TO STA. 14+65.00
 MISSION GROVE PARKWAY NORTH
 STA. 26+00.00 TO STA. 27+96.94

ACCOUNT NO. **S-1478**

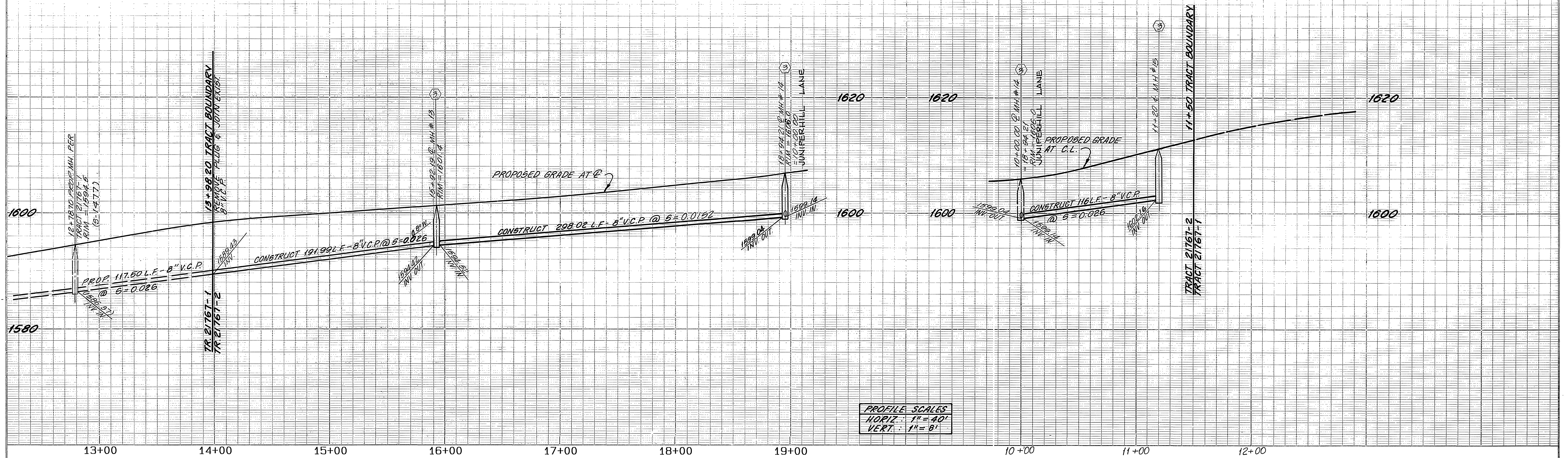
SHEET 5 OF 6

HORIZ. SCALE: 1" = 40' VERT. SCALE: 1" = 8'

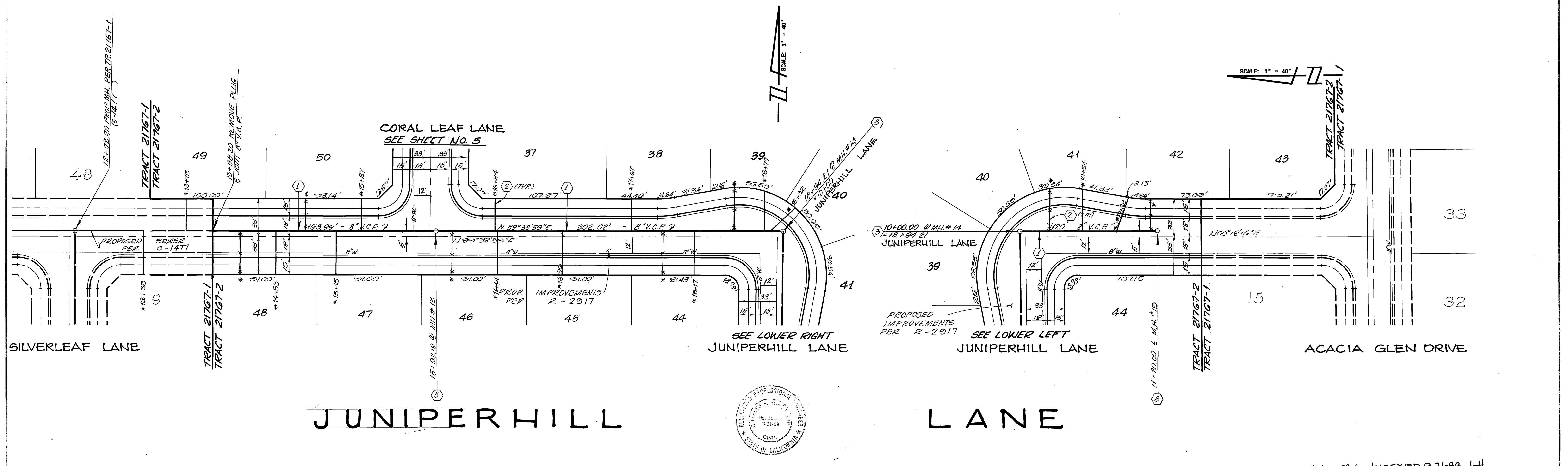


AS BUILT 11/10/84 INDEXED 9-21-88 LH

** SEWER P&T, #4 / PH. 2 - 5 (0, 39) PF: 3806 514 02-Jun-87 09: 00 PM / 3806.3-15



PROFILE SCALES
 HORIZ. 1" = 40'
 VERT. 1" = 8'



JUNIPERHILL LANE



BENCH MARK:
 BENCH MARK FB-C: P.K. NAIL AND TAG IN N'LY END OF 6" X 15" X 3" HIGH GRANITE ROCK N'LY OF INTERSECTION OF ALESSANDRO BLVD. AND TRAUTWEIN RD. FB735/72, ELEVATION 1627.344

UNAUTHORIZED CHANGES & USES
CAUTION: THE ENGINEER PREPARING THESE PLANS WILL NOT BE RESPONSIBLE FOR, OR LIABLE FOR, UNAUTHORIZED CHANGES TO OR USES OF THESE PLANS. ALL CHANGES TO THE PLANS MUST BE IN WRITING AND MUST BE APPROVED BY THE PREPARER OF THESE PLANS.

WESTERN MUNICIPAL WATER DISTRICT
 REVIEWED BY: *[Signature]* DATE: 11.12.87

HAWKINS, ROBERTSON & ASSOCIATES
 ENGINEERS & SURVEYORS
 (714) 884-9522
 3764 ELIZABETH ST. RIVERSIDE, CA. 92506

REGISTRATION EXPIRES: 3-31-89
 Charles E. Robertson 8-13-87
 R.C.E. No. 15,015

CITY OF RIVERSIDE
 PUBLIC WORKS DEPARTMENT

APPROVED BY: *[Signature]* DATE: 11/19/88
 PUBLIC WORKS DIRECTOR

DESIGNED BY: C.E.H. DRAWN BY: J.S. CHECKED BY: C.E.R. DATE: 11/14/88

TRACT 21767-2
 SEWER PLAN AND PROFILE
 JUNIPERHILL LANE
 STA. 13+00.00 TO STA. 18+94.21
 & STA. 10+00.00 TO STA. 11+20.00

ACCOUNT NO. S-1478
 SHEET 6 OF 6

HORIZ. SCALE: 1" = 40' VERT. SCALE: 1" = 8'