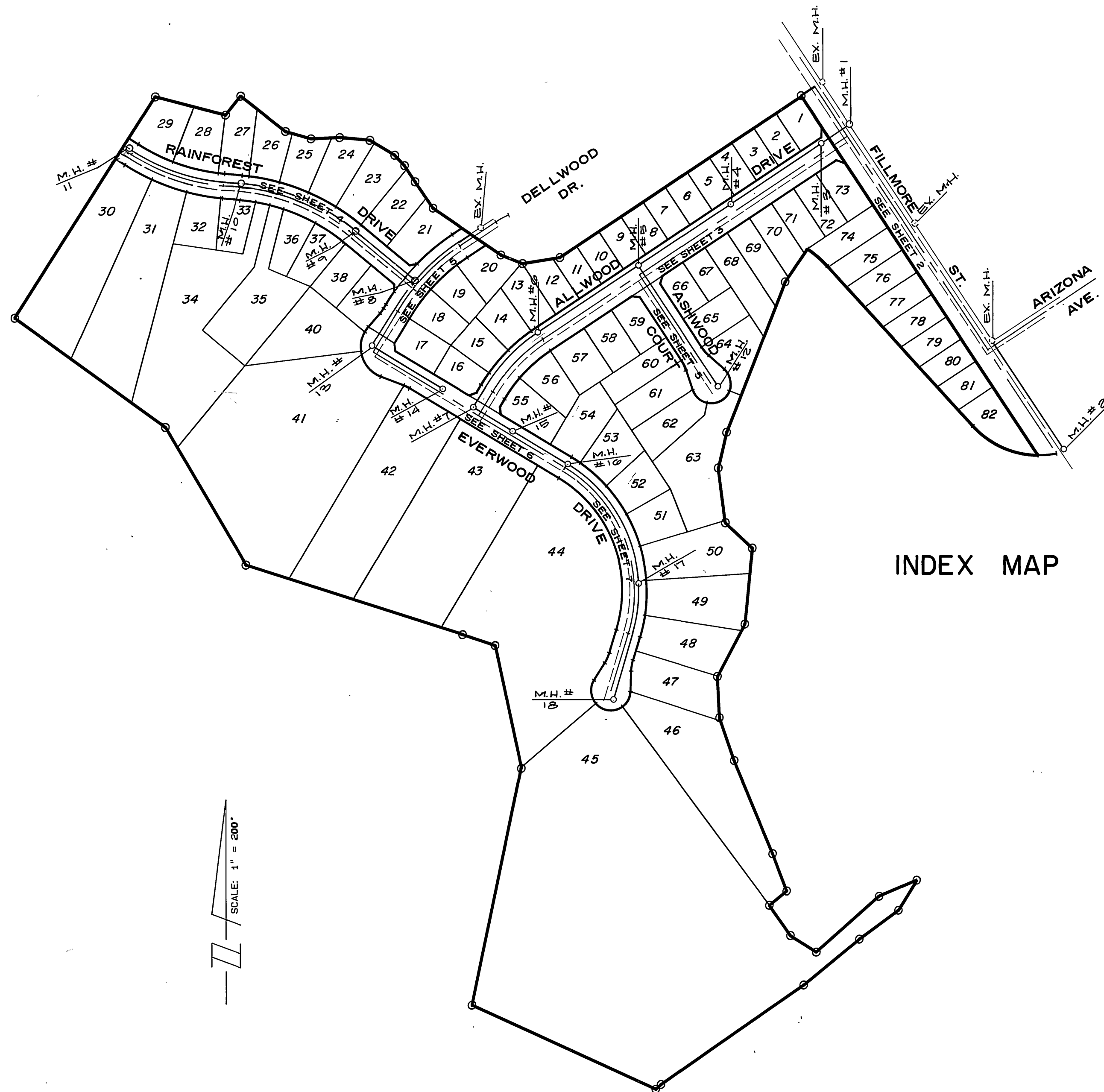


GENERAL NOTES

- IT SHALL BE THE RESPONSIBILITY OF THE CONTRACTOR TO CLEAR THE RIGHT OF WAY IN ACCORDANCE WITH THE PROVISIONS OF LAW AS IT AFFECTS EACH UTILITY INCLUDING IRRIGATION LINES AND APPURTENANCES AND AT NO COST TO THE CITY.
- CONSTRUCTION SHALL BE IN ACCORDANCE WITH THE CITY OF RIVERSIDE DEPARTMENT OF PUBLIC WORKS, STANDARD DRAWINGS, STANDARD DRAWING NO. 10 AND THE STANDARD SPECIFICATIONS FOR PUBLIC WORKS CONSTRUCTION, CURRENT EDITION.
- THE PRIVATE ENGINEER SIGNING THESE PLANS IS RESPONSIBLE FOR ASSURING THE ACCURACY AND ACCEPTABILITY OF THE WORK HEREON. IN THE EVENT OF DISCREPANCIES ARISING DURING CONSTRUCTION, THE PRIVATE ENGINEER SHALL BE RESPONSIBLE FOR DETERMINING AN ACCEPTABLE SOLUTION AND REVISING THE PLANS FOR APPROVAL BY THE CITY.
- THE DEVELOPER SHALL BE RESPONSIBLE FOR PRESERVING OR RE-ESTABLISHING AND REFERENCING SURVEY MONUMENTS DESTROYED, DISTURBED OR BURIED AS A RESULT OF CONSTRUCTION SHOWN HEREON.
- ALL FLAGGED ELEVATIONS SHALL BE STAKED IN THE FIELD BY THE PRIVATE ENGINEER.
- THE CONTRACTOR SHALL CALL IN A LOCATION REQUEST TO UNDERGROUND SERVICE ALERT (USA), PHONE NO. 1-800-422-4133, TWO WORKING DAYS BEFORE DIGGING. NO CONSTRUCTION PERMIT WILL BE ISSUED BY THE PUBLIC WORKS DEPARTMENT INVOLVING EXCAVATION FOR UNDERGROUND FACILITIES UNLESS THE APPLICANT HAS BEEN PROVIDED AN INQUIRY IDENTIFICATION NUMBER OF U.S.A.
- CONTRACTOR IS TO VERIFY EXISTING SEWER LOCATION AND ELEVATION PRIOR TO START OF CONSTRUCTION.
- LOCATION OF LATERALS TO BE DETERMINED IN THE FIELD AT THE DIRECTION OF THE OWNER. AVOID CONFLICT WITH PROPOSED AND/OR EXISTING FACILITIES.
- NO FINISHED FLOOR ELEVATION SHALL BE LESS THAN 4' ABOVE THE SEWER FLOW LINE AT POINT OF CONNECTION WITHOUT HAVING A PROPER BACKWATER VALVE INSTALLED IN THE LATERAL.
- A PLUG SHALL BE INSTALLED AND WILL REMAIN IN PLACE WHERE THE NEW SEWER CONNECTS WITH THE EXISTING SEWER UNTIL THE NEW SEWER IS ACCEPTED BY THE CITY.
- THE SEWER CONTRACTOR SHALL ADJUST MANHOLES TO FINAL GRADE AFTER PAVING IS COMPLETED.

NOTICE TO CONTRACTOR

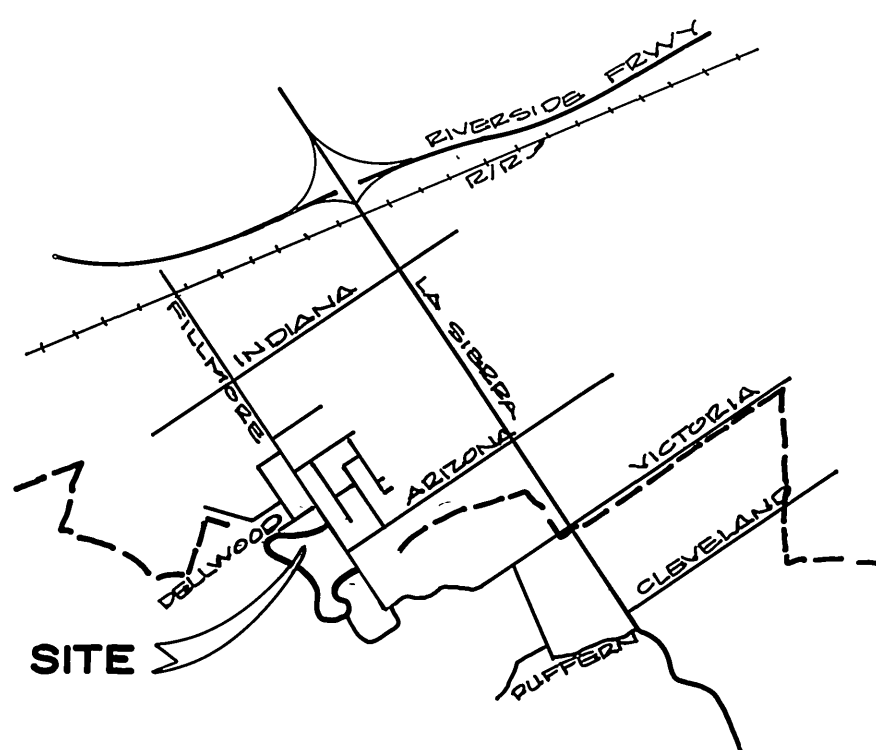
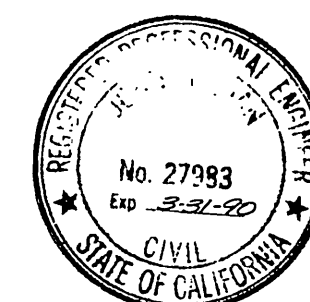
- THE EXISTENCE AND LOCATION OF ANY UNDERGROUND UTILITY PIPES OR STRUCTURES SHOWN ON THESE PLANS ARE OBTAINED BY A SEARCH OF THE AVAILABLE RECORDS. TO THE BEST OF OUR KNOWLEDGE, THERE ARE NO EXISTING UTILITIES EXCEPT THOSE SHOWN ON THESE PLANS.
- THE CONTRACTOR IS REQUIRED TO TAKE DUE PRECAUTIONARY MEASURES TO PROTECT THE UTILITY LINES SHOWN AND ANY OTHER LINES NOT OF RECORD OR NOT SHOWN ON THESE PLANS.
- CALL UNDERGROUND SERVICE ALERT (U.S.A.) 1-800-422-4133 AT LEAST 48 HOURS PRIOR TO EXCAVATION.



INDEX MAP

BENCH MARK

D3-D
P.C. NAIL AND TAG IN NLY CEMENT BANK
OF D.W.C. CANAL ON ELY. SIDE OF FILLMORE
STREET F.B. 129/55
ELEV. 797.286

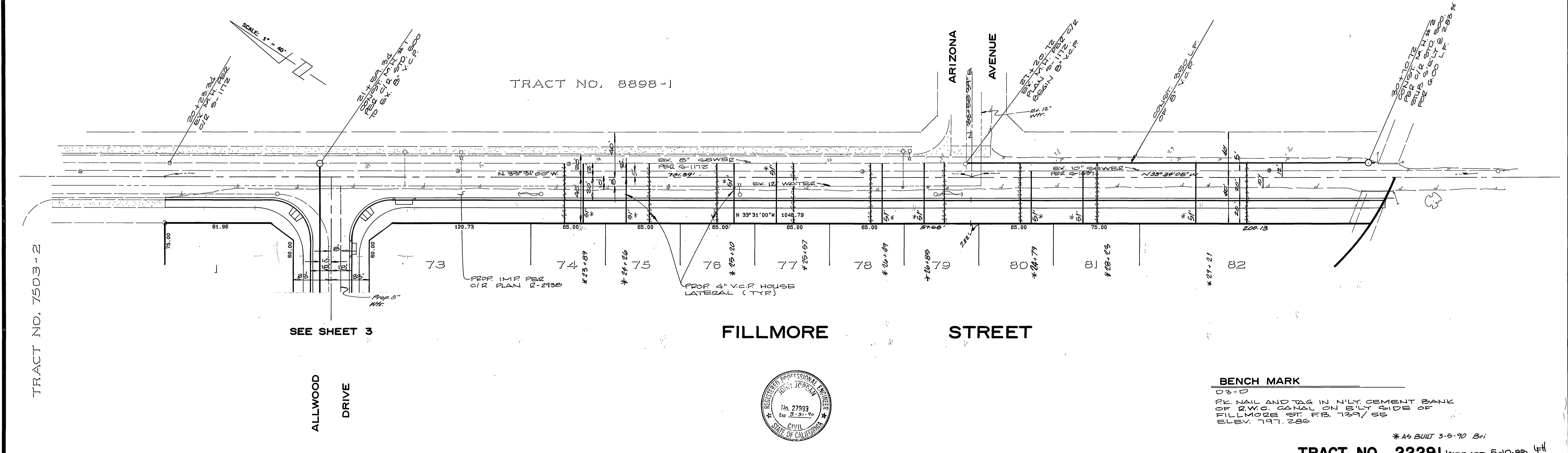
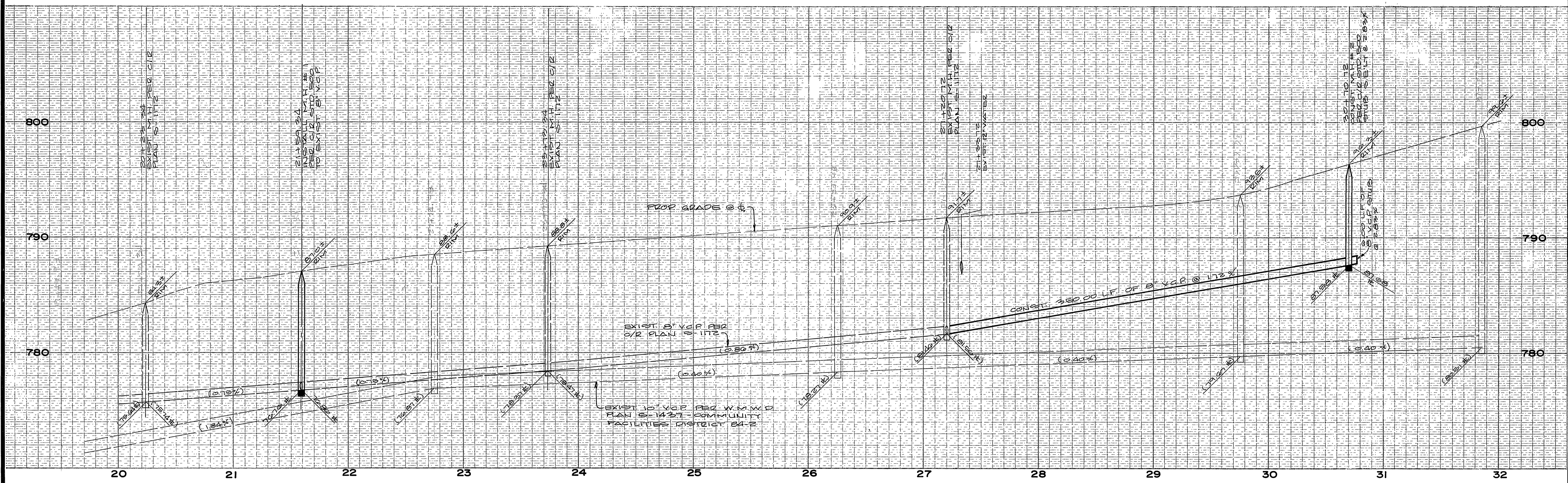


LOCATION MAP
NO SCALE

*AS BUILT 3-5-70 B1

TRACT NO. 22291 INDEXED 5-10-88 41

| | | | | |
|--|--|---|--|---|
| ALBERT A. WEBB ASSOCIATES CIVIL ENGINEERS RIVERSIDE, CALIFORNIA APPROVED BY: <i>[Signature]</i> DATE: 8/3/87 R.E. No. 27983 | | CITY OF RIVERSIDE, CALIFORNIA PUBLIC WORKS DEPARTMENT APPROVED BY: <i>[Signature]</i> DATE: 3/7/88 DIRECTOR OF PUBLIC WORKS | | ACCOUNT No. DRAWING NUMBER S-1491 SHEET 1 OF 7 87-3.B |
| W.O. 87-3 FOR: CONCORDIA DEV. CORP. F.B. | | DESIGNED BY: R.H. DRAWN BY: R.H. CHECKED BY: R.L.T. | | SCALE: AS NOTED |



CITY OF RIVERSIDE
WATER SYSTEM

APPROVED *Carl Weinger* 11/4/87
DATE

PACIFIC BELL
TELEPHONE CO.

APPROVED *B. L. Johnson* 10/21/87
DATE

ALBERT A. WEBB ASSOCIATES
CIVIL ENGINEERS
RIVERSIDE, CALIFORNIA

APPROVED BY *[Signature]* DATE 8-3-87
R.E. No. 27983

| MARK | REVISIONS | APPR. | DATE |
|------|-----------|-------|------|
| | | | |

CITY OF RIVERSIDE, CALIFORNIA
PUBLIC WORKS DEPARTMENT

APPROVED BY *[Signature]* DATE 3/7/88
DIRECTOR OF PUBLIC WORKS

TRACT NO. 22291 INDEXED 5-10-88 4H

SEWER IMPROVEMENT
PLAN & PROFILE

FILLMORE STREET

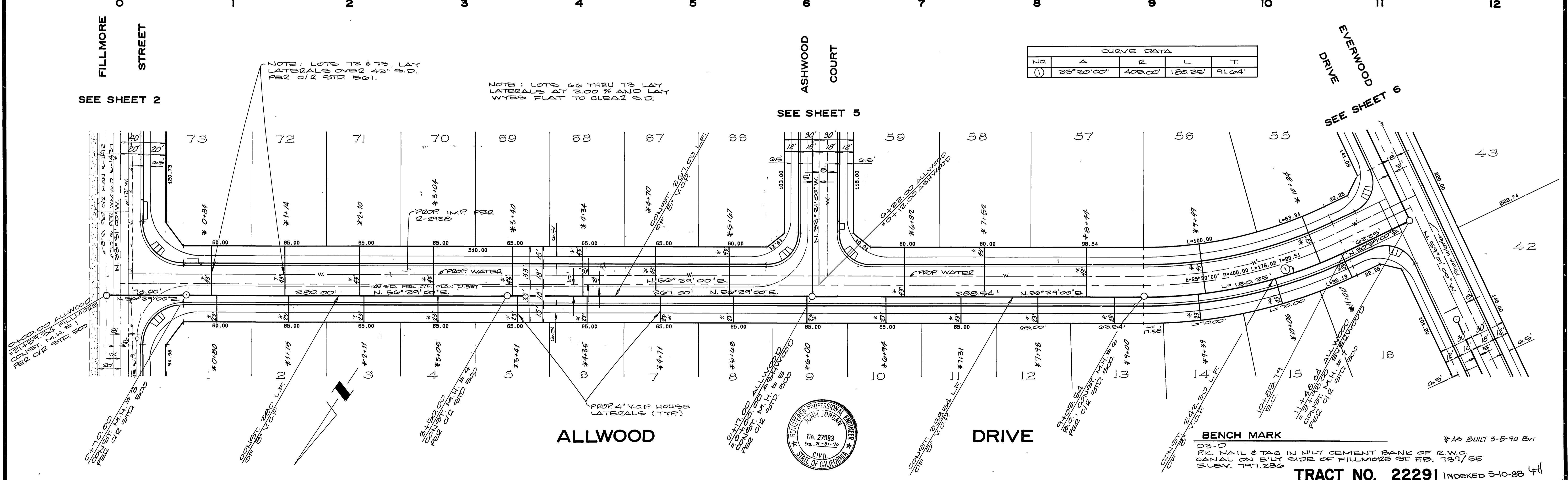
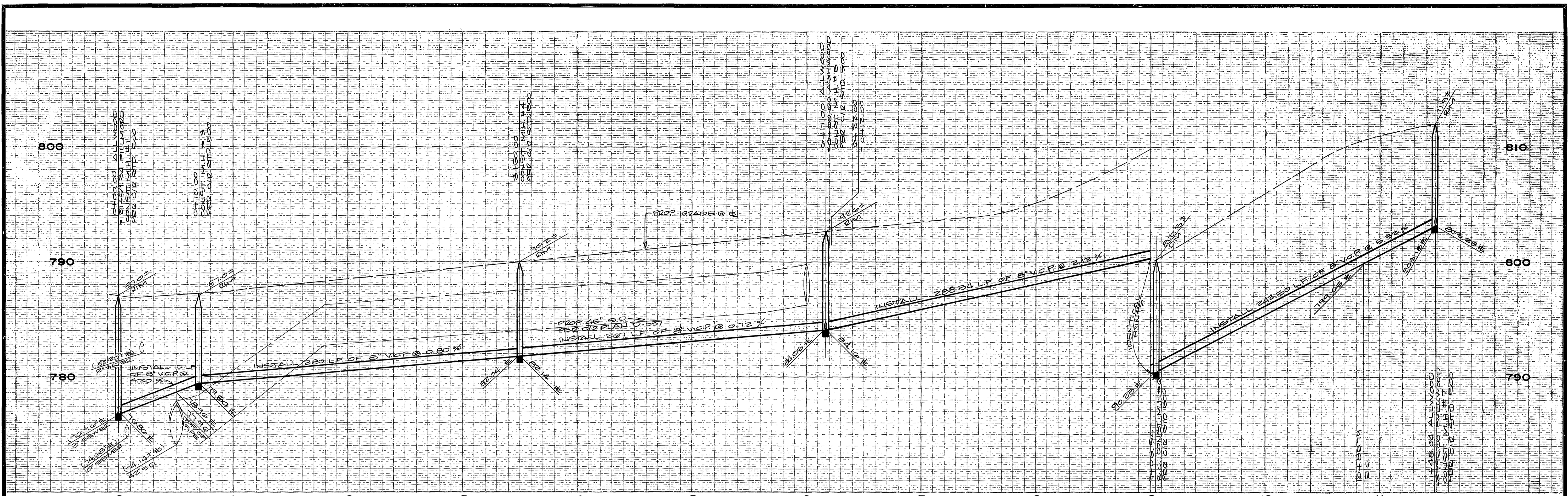
ACCOUNT No. DRAWING NUMBER
S-1491

SHEET 2 OF 7

SCALE: HORIZ. 1"=40', VERT. 1"=4'

87-3.B





| CURVE DATA | | | | |
|------------|-----------|---------|---------|--------|
| NO | Δ | R | L | T |
| (1) | 25°30'00" | 405.00' | 180.25' | 91.64' |

CITY OF RIVERSIDE WATER SYSTEM
 APPROVED: *Carl Wengert* 11/9/87
 DATE: 11/9/87

PACIFIC BELL TELEPHONE CO.
 APPROVED: *B. S. ...* 10/21/87
 DATE: 10/21/87

ALBERT A. WEBB ASSOCIATES
 CIVIL ENGINEERS
 RIVERSIDE, CALIFORNIA
 APPROVED BY: *[Signature]* DATE: 8/3/87
 R.E. No. 27983

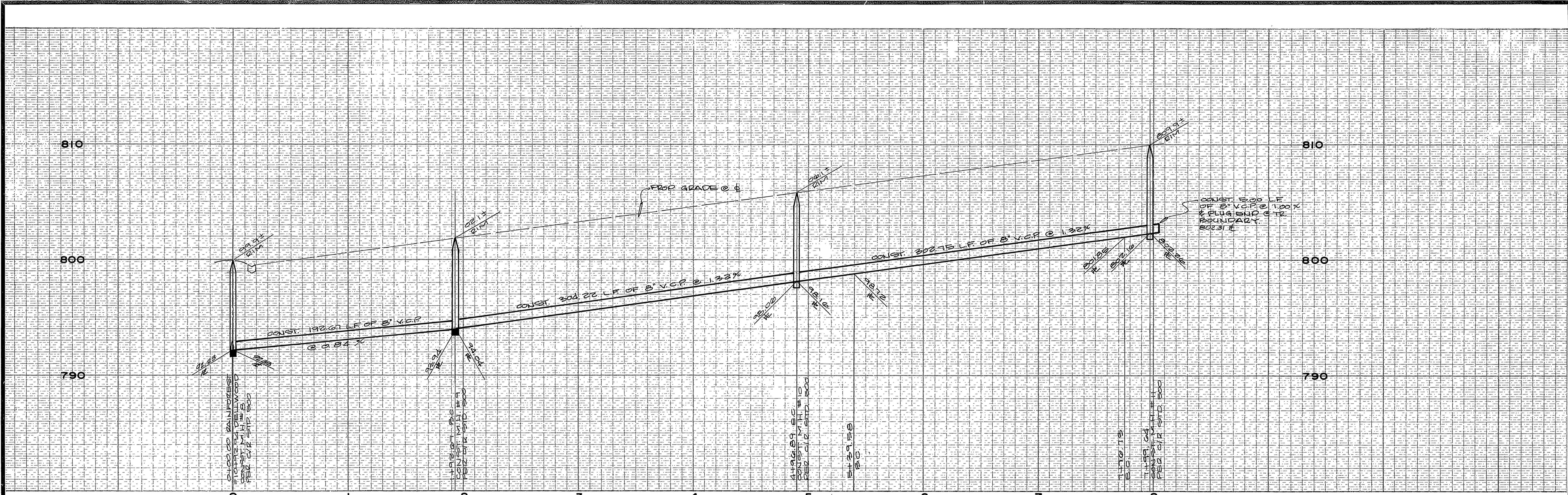
CITY OF RIVERSIDE, CALIFORNIA
 PUBLIC WORKS DEPARTMENT
 APPROVED BY: *[Signature]* DATE: 3/7/88
 DIRECTOR OF PUBLIC WORKS

TRACT NO. 22291 INDEXED 5-10-88 FH

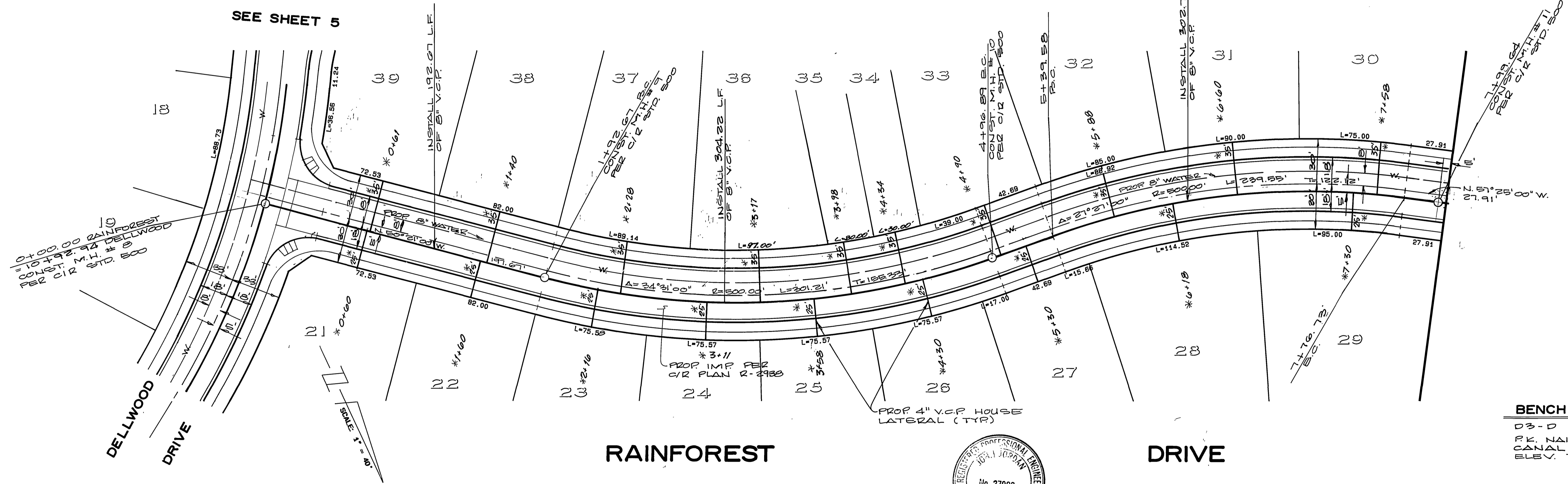
ACCOUNT No. _____
 DRAWING NUMBER
S-1491
 SHEET **3** OF **7**
87-3.B

SCALE: HORIZ. 1"=40', VERT. 1"=4'

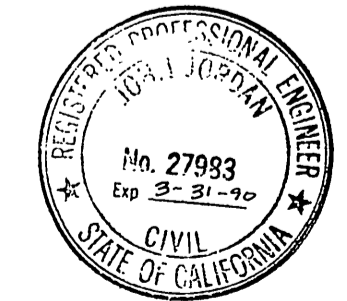
DESIGNED BY R.H. DRAWN BY R.H. CHECKED BY R.L.T.



| CURVE DATA | | | | |
|------------|-------------|-------|---------|---------|
| NO. | Δ | R | L | T |
| ① | 34° 31' 00" | 50500 | 304.22' | 156.89' |
| ② | 27° 21' 00" | 49500 | 237.15' | 120.90' |

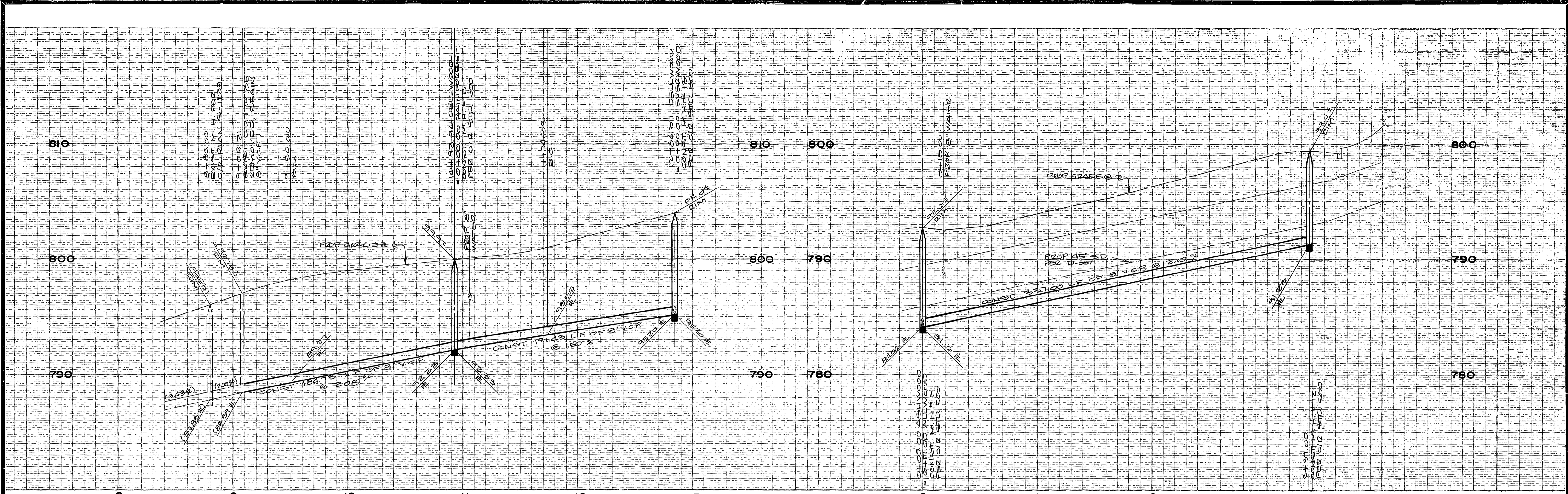


BENCH MARK
 D3-D
 P.K. NAIL AND TAG IN N.E. CEMENT BANK OF R.W.C. CANAL ON ELY SIDE OF FILLMORE ST. FB. 729/55
 ELEV. 797.280



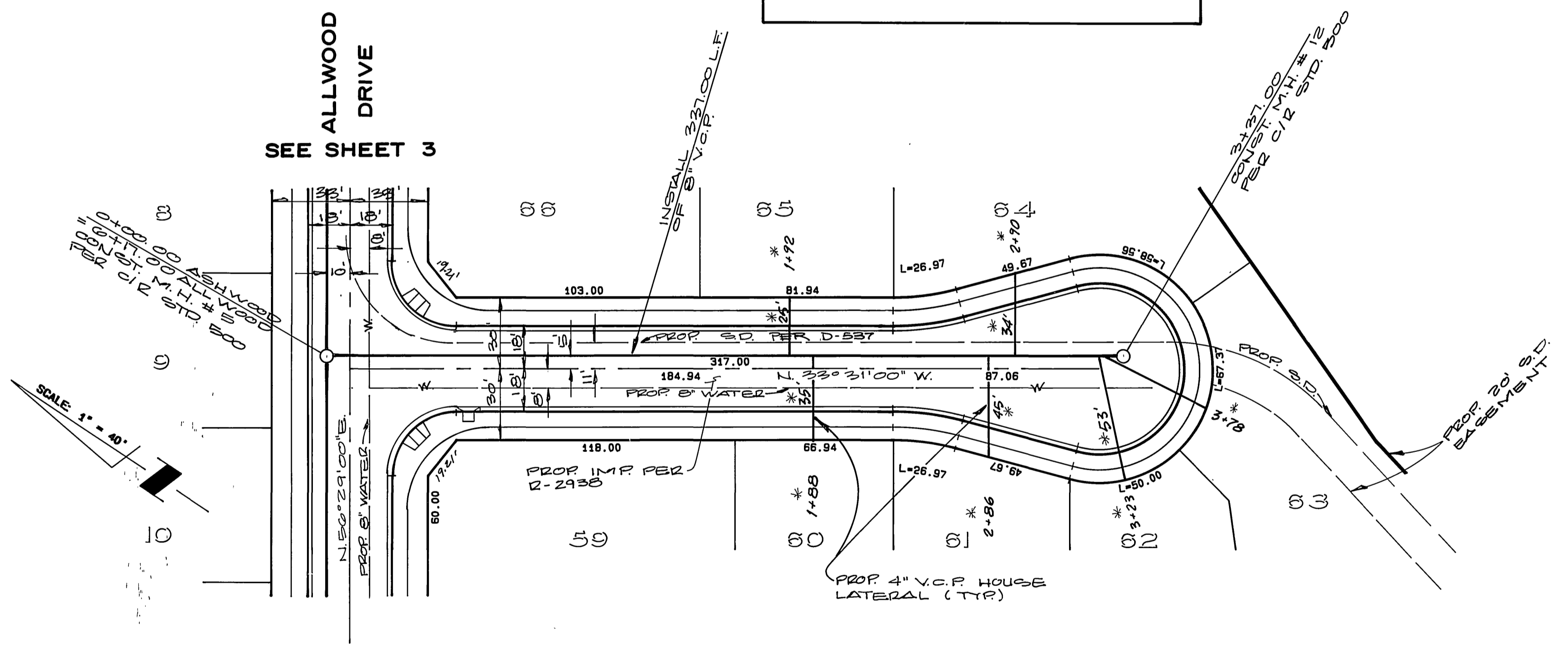
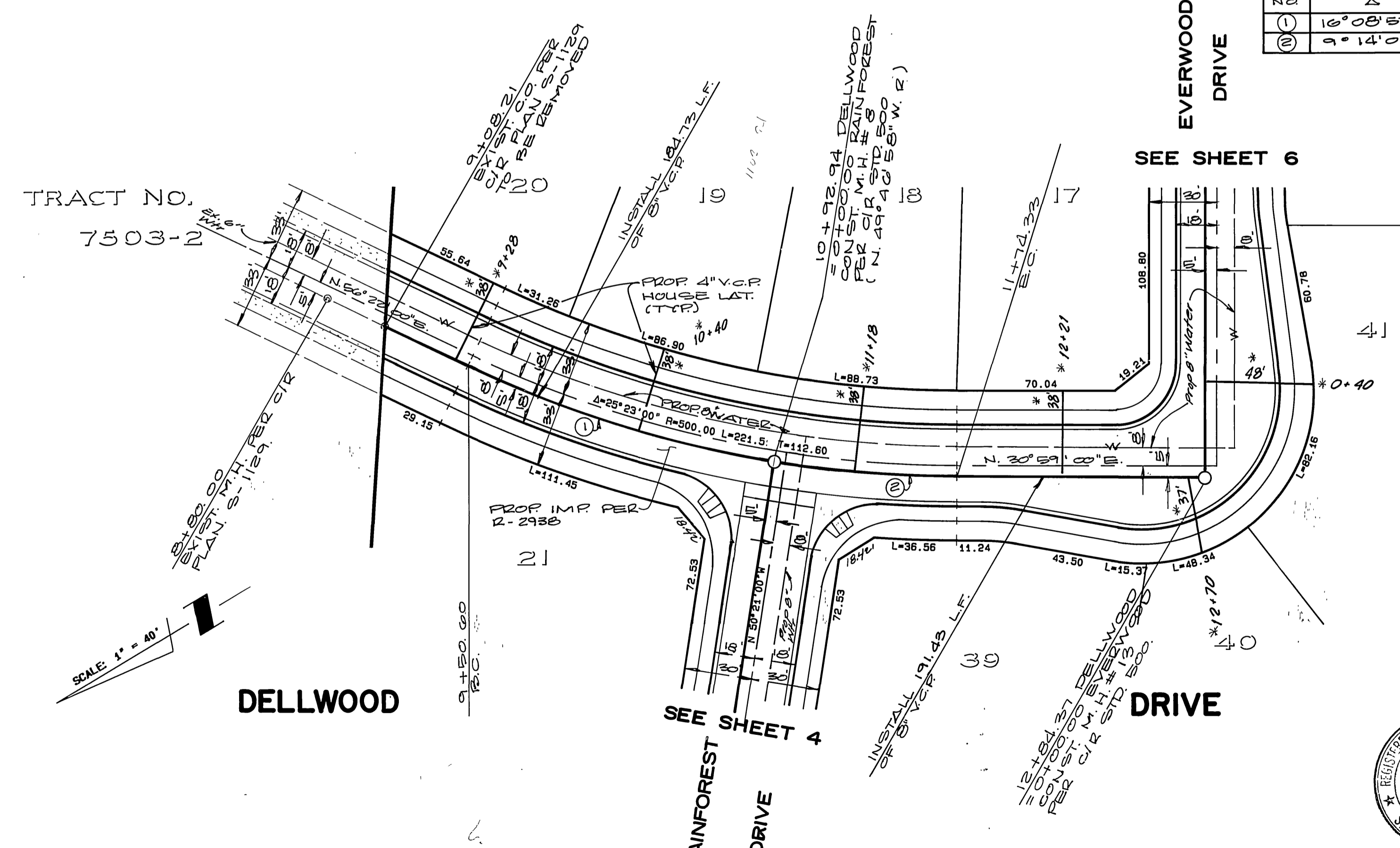
TRACT NO. 22291 INDEXED 5-10-88 4H
 *AS BUILT 5-5-90 Bri

| | | | | | |
|---|---|--|--|-------------------------------------|---|
| CITY OF RIVERSIDE WATER SYSTEM | ALBERT A. WEBB ASSOCIATES CIVIL ENGINEERS RIVERSIDE, CALIFORNIA | APPROVED BY <i>[Signature]</i> DATE 8/3/87 R.E. No. 27983 | CITY OF RIVERSIDE, CALIFORNIA PUBLIC WORKS DEPARTMENT | SEWER IMPROVEMENT PLAN & PROFILE | ACCOUNT NO. |
| | | | | | DRAWING NUMBER S-1491 |
| APPROVED BY <i>[Signature]</i> DATE 11/4/87 | APPROVED BY <i>[Signature]</i> DATE 8/3/87 | APPROVED BY <i>[Signature]</i> DATE 3/7/88 | PRINCIPAL ENGINEER | DIRECTOR OF PUBLIC WORKS | SHEET 4 OF 7 |
| DESIGNED BY R.H. DRAWN BY R.H. CHECKED BY R.L.T. | DESIGNED BY R.H. DRAWN BY R.H. CHECKED BY R.L.T. | DATE 3/7/88 | CHIEF PUB. WKS. ENGR. | DATE 3/7/88 | SCALE: HORIZ. 1"=40', VERT. 1"=4' |
| <p style="text-align: center;">RAINFOREST DRIVE</p> | | | | | <p style="text-align: center;">87-3.B</p> |



| CURVE DATA | | | | |
|------------|-------------|--------|---------|--------|
| NO. | Δ | R | L | T |
| (1) | 16° 08' 57" | 505.00 | 142.24' | 71.64' |
| (2) | 9° 14' 02" | 505.00 | 81.39' | 42.78' |

NOTE: LOTS 64 THRU 66 LAY
LATERALS AT 2.00% AND LAY
WYES FLAT TO CLEAR S.D.



BENCH MARK
 D3-D
 1/2" NAIL & TAG IN N'LY CEMENT BANK
 OF R.W.C. CANAL ON E.L.Y. SIDE OF
 FILLMORE ST. FB 739/55
 ELEV. 797.280

*AS BUILT 3-6-90 Brl
TRACT NO. 22291 INDEXED 5-10-88

CITY OF RIVERSIDE
 WATER SYSTEM

PACIFIC BELL
 TELEPHONE CO.

Carl W. [Signature] 4/9/87
 APPROVED DATE

[Signature] 4/21/87
 APPROVED DATE

ALBERT A. WEBB ASSOCIATES
 CIVIL ENGINEERS
 RIVERSIDE, CALIFORNIA

APPROVED BY [Signature] DATE 8-3-87
 R.E. No. 27983

REVISIONS

APPR. DATE

DESIGNED BY R.H. DRAWN BY R.H. CHECKED BY R.L.T.

CITY OF RIVERSIDE, CALIFORNIA
 PUBLIC WORKS DEPARTMENT

APPROVED BY [Signature] DATE 3/7/88
 DIRECTOR OF PUBLIC WORKS

SEWER IMPROVEMENT
 PLAN & PROFILE

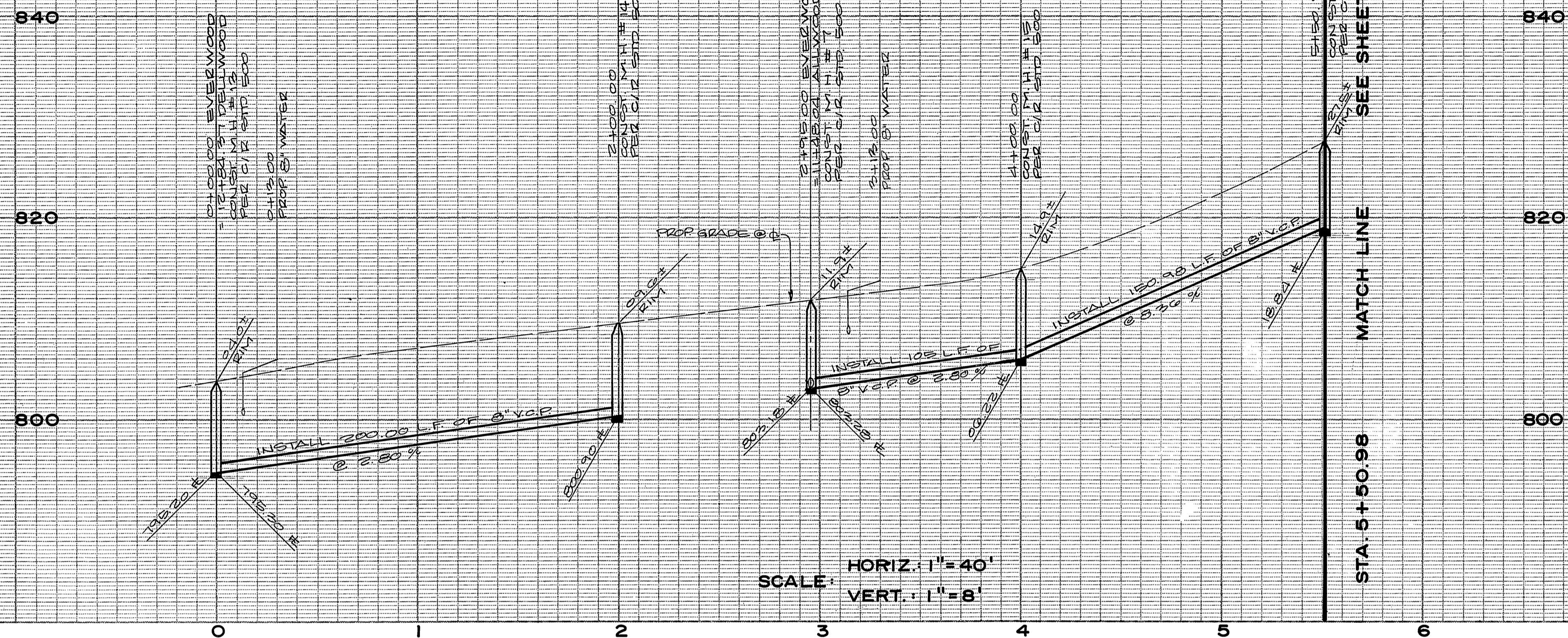
**ASHWOOD COURT
 DELLWOOD DRIVE**

SCALE: HORIZ. 1" = 40', VERT. 1" = 4'

ACCOUNT No.
 DRAWING NUMBER
S-1491

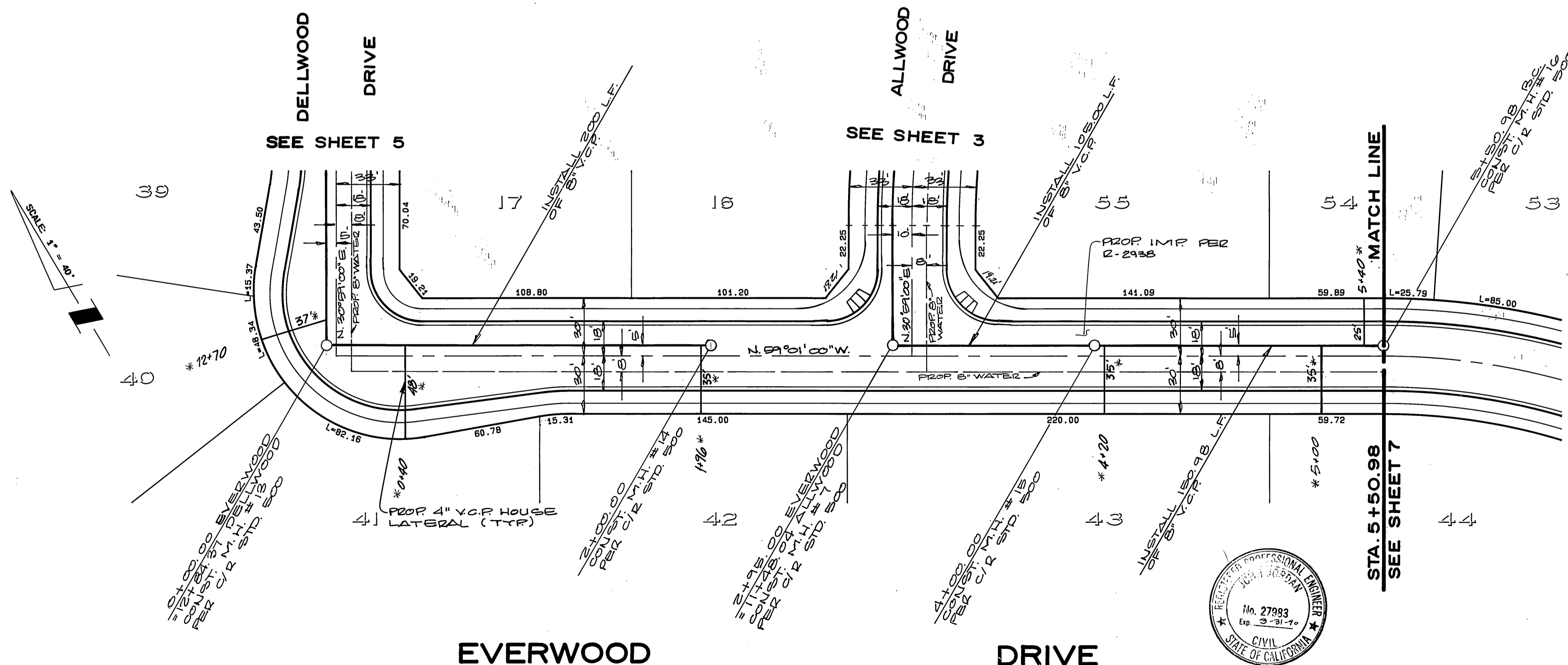
SHEET **5** OF **7**

87-3.B



SCALE: HORIZ. 1" = 40'
VERT. 1" = 8'

STA. 5+50.98 MATCH LINE SEE SHEET 7

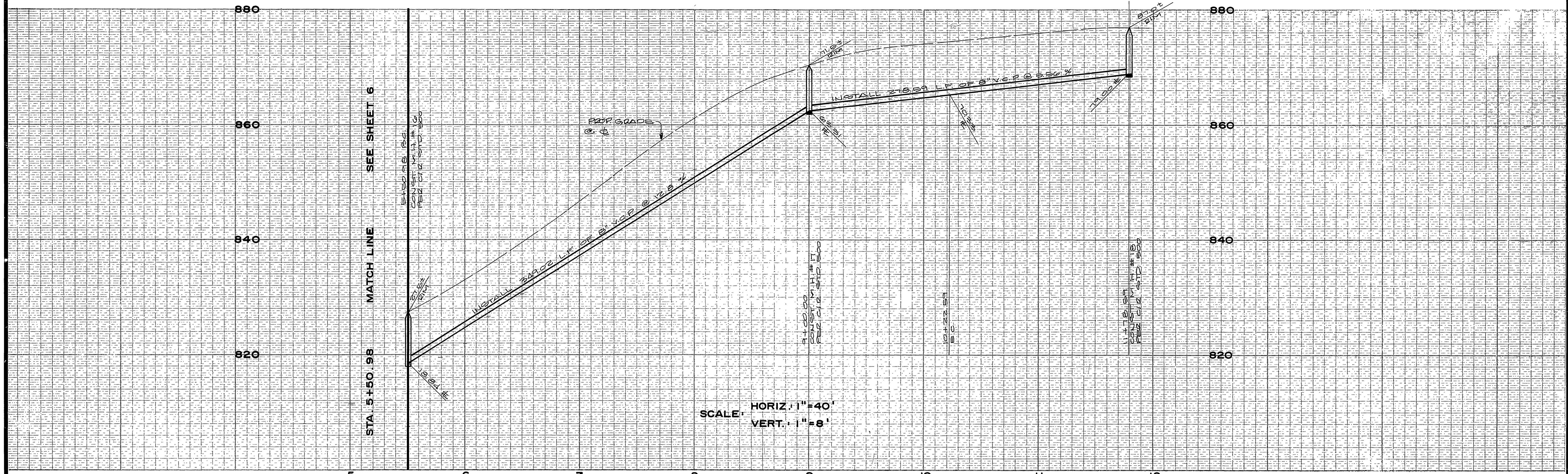


BENCH MARK
D3-D
PK. NAIL & TAG IN N'LY CEMENT BANK OF
R.W.C. CANAL ON E'LY SIDE OF FILLMORE
ST. F.S. 734 / 35
ELEV. 797.286

*As BUILT 3-6-90 Br'
TRACT NO. 22291 INDEXED 5-10-88 44

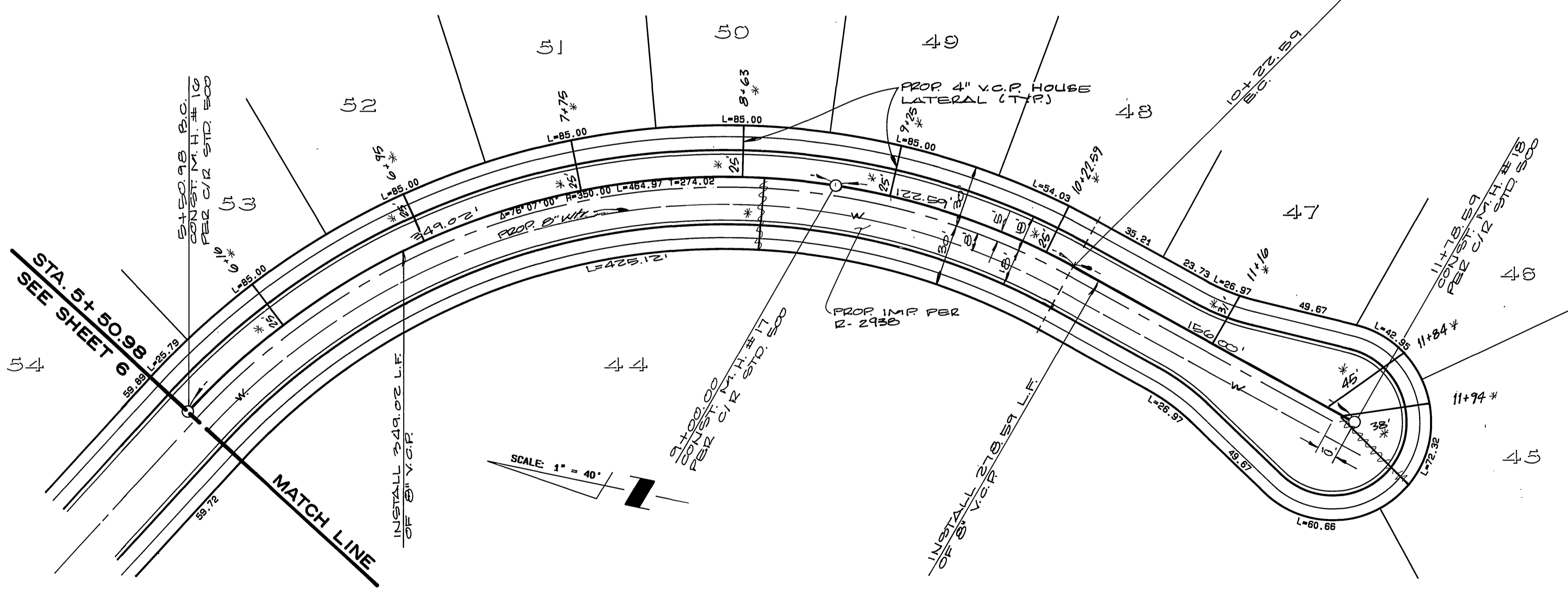
| | | | | | |
|---|---|--|--|--|---------------------------------|
| CITY OF RIVERSIDE WATER SYSTEM | ALBERT A. WEBB ASSOCIATES CIVIL ENGINEERS RIVERSIDE, CALIFORNIA | APPROVED BY <i>[Signature]</i> DATE 8/3/87 R.E. No. 27983 | CITY OF RIVERSIDE, CALIFORNIA PUBLIC WORKS DEPARTMENT | SEWER IMPROVEMENT PLAN & PROFILE EVERWOOD DRIVE | ACCOUNT No. |
| | | | | | DRAWING NUMBER S-1491 |
| APPROVED BY <i>[Signature]</i> DATE 11/4/87 | APPROVED BY <i>[Signature]</i> DATE 8/3/87 | DESIGNED BY R.H. DRAWN BY R.H. CHECKED BY R.L.T. | CHIEF PUB. WKS. ENGR. <i>[Signature]</i> DATE 3/7/88 | DIRECTOR OF PUBLIC WORKS | SHEET 6 OF 7 |
| W.O. 87-3 FOR: CONCORDIA DEV. CORP. F.B. | | | SCALE: HORIZ. 1" = 40', VERT. 1" = 8' | | 87-3.B |





SCALE: HORIZ. 1" = 40'
 VERT. 1" = 8'

| CURVE DATA | | | | |
|------------|-----------|---------|---------|---------|
| NO. | Δ | R | L | T |
| 1 | 76°01'00" | 3550.00 | 471.61' | 277.94' |



BENCH MARK
 D3-D
 PK. NAIL & TAG IN N'LY CEMENT BANK OF
 R.W.C. CANAL ON E'LY SIDE OF FILLMORE
 ST. FB 799/55
 ELEV. 797.286

EVERWOOD

DRIVE



* AS BUILT 3-6-90 Rri
 TRACT NO. 22291 INDEXED 5-10-88 4th

| | | | |
|--|--|--|---------------------------------|
| CITY OF RIVERSIDE WATER SYSTEM APPROVED BY <i>Carl Wengert</i> 11/4/87 DATE | ALBERT A. WEBB ASSOCIATES CIVIL ENGINEERS RIVERSIDE, CALIFORNIA APPROVED BY <i>Albert A. Webb</i> DATE 3.5.88 R.E. No. 27983 | CITY OF RIVERSIDE, CALIFORNIA PUBLIC WORKS DEPARTMENT APPROVED BY <i>Benny Beck</i> DIRECTOR OF PUBLIC WORKS DATE 3/7/88 | ACCOUNT No. |
| | | | DRAWING NUMBER S-1491 |
| DESIGNED BY R.H. DRAWN BY R.H. CHECKED BY R.L.T. | | | DRAWING NUMBER S-1491 |
| SCALE: HORIZ. 1" = 40', VERT. 1" = 8' | | | SHEET 7 OF 7 |
| W.O. 87-3 FOR: CONCORDIA DEV. CORP. F.B. | | | 87-3.B |