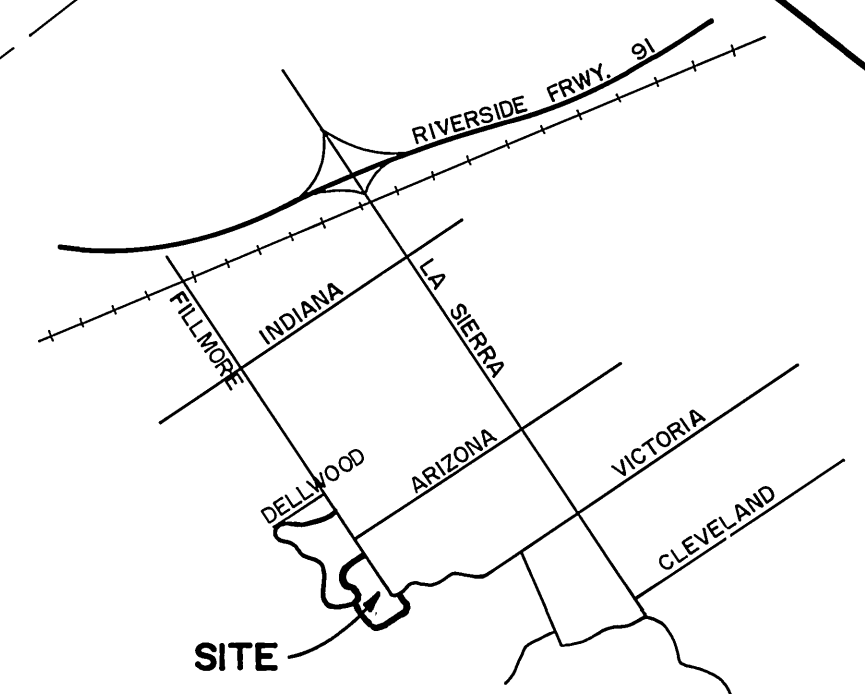


GENERAL NOTES

- IT SHALL BE THE RESPONSIBILITY OF THE CONTRACTOR TO CLEAR THE RIGHT OF WAY IN ACCORDANCE WITH THE PROVISIONS OF LAW AS IT AFFECTS EACH UTILITY INCLUDING IRRIGATION LINES AND APPURTENANCES AND AT NO COST TO THE CITY.
- CONSTRUCTION SHALL BE IN ACCORDANCE WITH THE CITY OF RIVERSIDE DEPARTMENT OF PUBLIC WORKS, STANDARD DRAWINGS, STANDARD DRAWING NO. 10 AND THE STANDARD SPECIFICATIONS FOR PUBLIC WORKS CONSTRUCTION, CURRENT EDITION.
- THE PRIVATE ENGINEER SIGNING THESE PLANS IS RESPONSIBLE FOR ASSURING THE ACCURACY AND ACCEPTABILITY OF THE WORK HEREON. IN THE EVENT OF DISCREPANCIES ARISING DURING CONSTRUCTION, THE PRIVATE ENGINEER SHALL BE RESPONSIBLE FOR DETERMINING AN ACCEPTABLE SOLUTION AND REVISING THE PLANS FOR APPROVAL BY THE CITY.
- THE DEVELOPER SHALL BE RESPONSIBLE FOR PRESERVING OR RE-ESTABLISHING AND REFERENCING SURVEY MONUMENTS DESTROYED, DISTURBED OR BURIED AS A RESULT OF CONSTRUCTION SHOWN HEREON.
- ALL FLAGGED ELEVATIONS SHALL BE STAKED IN THE FIELD BY THE PRIVATE ENGINEER.
- THE CONTRACTOR SHALL CALL IN A LOCATION REQUEST TO UNDERGROUND SERVICE ALERT (USA), PHONE NO. 1-800-422-4133, TWO WORKING DAYS BEFORE DIGGING. NO CONSTRUCTION PERMIT WILL BE ISSUED BY THE PUBLIC WORKS DEPARTMENT INVOLVING EXCAVATION FOR UNDERGROUND FACILITIES UNLESS THE APPLICANT HAS BEEN PROVIDED AN INDUSTRY IDENTIFICATION NUMBER OF U.S.A.
- CONTRACTOR IS TO VERIFY EXISTING SEWER LOCATION AND ELEVATION PRIOR TO START OF CONSTRUCTION.
- LOCATION OF LATERALS TO BE DETERMINED IN THE FIELD AT THE DIRECTION OF THE OWNER. AVOID CONFLICT WITH PROPOSED AND/OR EXISTING FACILITIES.
- NO FINISHED FLOOR ELEVATION SHALL BE LESS THAN 4' ABOVE THE SEWER FLOW LINE AT POINT OF CONNECTION WITHOUT HAVING A PROPER BACKWATER VALVE INSTALLED IN THE LATERAL.
- A PLUG SHALL BE INSTALLED AND WILL REMAIN IN PLACE WHERE THE NEW SEWER CONNECTS WITH THE EXISTING SEWER UNTIL THE NEW SEWER IS ACCEPTED BY THE CITY.
- THE SEWER CONTRACTOR SHALL ADJUST MANHOLES TO FINAL GRADE AFTER PAVING IS COMPLETED.

NOTICE TO CONTRACTOR

- THE EXISTENCE AND LOCATION OF ANY UNDERGROUND UTILITY PIPES OR STRUCTURES SHOWN ON THESE PLANS ARE OBTAINED BY A SEARCH OF THE AVAILABLE RECORDS. TO THE BEST OF OUR KNOWLEDGE, THERE ARE NO EXISTING UTILITIES EXCEPT THOSE SHOWN ON THESE PLANS.
- THE CONTRACTOR IS REQUIRED TO TAKE DUE PRECAUTIONARY MEASURES TO PROTECT THE UTILITY LINES SHOWN AND ANY OTHER LINES NOT OF RECORD OR NOT SHOWN ON THESE PLANS.
- CALL UNDERGROUND SERVICE ALERT (U.S.A.) 1-800-422-4133 AT LEAST 48 HOURS PRIOR TO EXCAVATION.



BENCH MARK
CITY OF RIVERSIDE D3-D, P.K. NAIL & TAG
IN N'LY CEMENT BANK OF R.W.C. CANAL ON
E'LY SIDE OF FILLMORE ST. C/R FB739/55
EL. 797.286

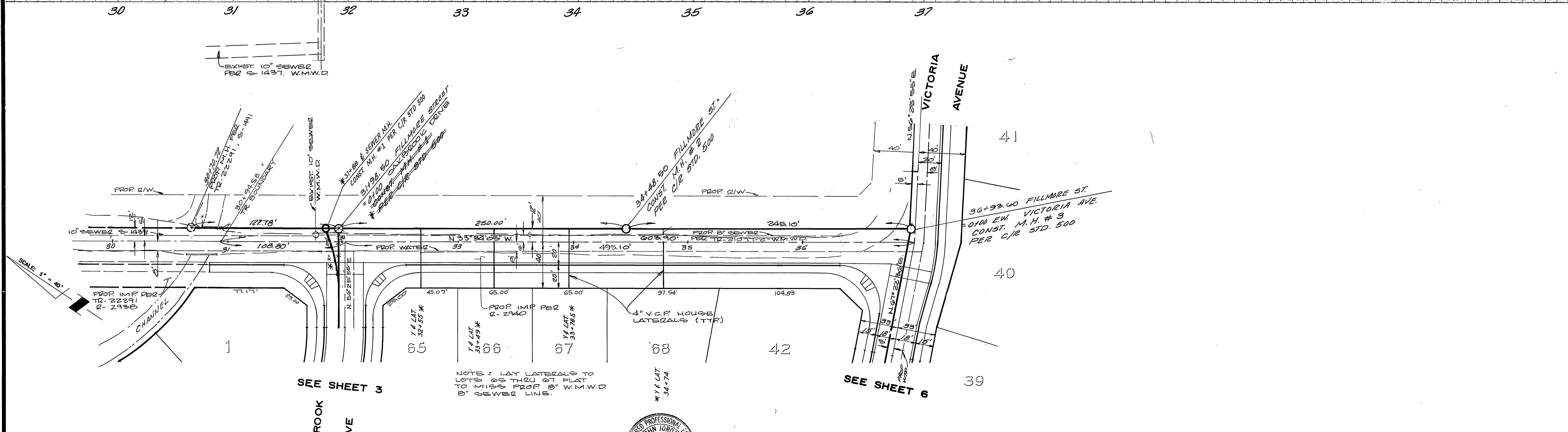
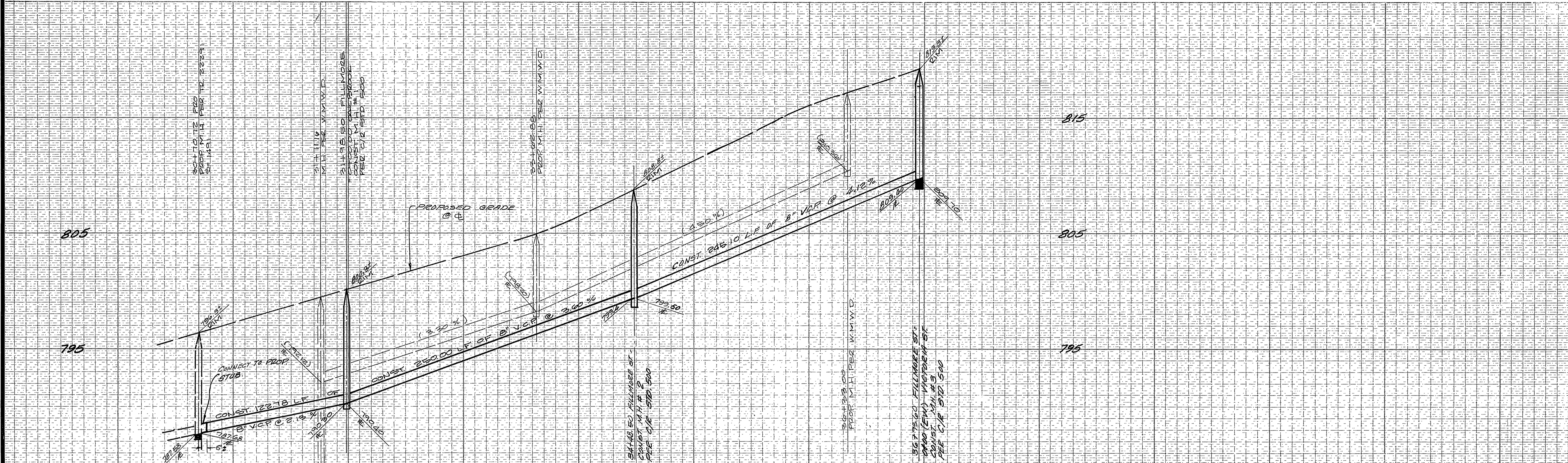
LOCATION MAP
NO SCALE

INDEX MAP



TRACT NO. 22598 INDEXED 5-10-88 4H

CITY OF RIVERSIDE WATER SYSTEM APPROVED <i>Carl W. Langston</i> 11/9/87 DATE	ALBERT A. WEBB ASSOCIATES CIVIL ENGINEERS RIVERSIDE, CALIFORNIA (714) 939-1070 R.E. No. 27983 DATE 8/3/87	CITY OF RIVERSIDE, CALIFORNIA PUBLIC WORKS DEPARTMENT APPROVED BY <i>[Signature]</i> DATE 11/13/87 PRINCIPAL ENGINEER PARK DEPARTMENT TRAFFIC DIVISION CHIEF PUB. WKS. ENGR. <i>[Signature]</i> DATE 3/7/88	APPROVED BY <i>[Signature]</i> DIRECTOR OF PUBLIC WORKS DATE 3/7/88	ACCOUNT No. DRAWING NUMBER S-1493
				SHEET 1 OF 6 SCALE: AS NOTED 87-75-B



BENCH MARK:
 CITY OF RIVERSIDE D3-D. PK. NAIL & TAG
 IN N'LY CEMENT BANK OF R.W.C. CANAL
 ON E'LY SIDE OF FILLMORE ST. C/R FB 739/55
 EL. 797.286

OAKBROOK DRIVE
FILLMORE STREET

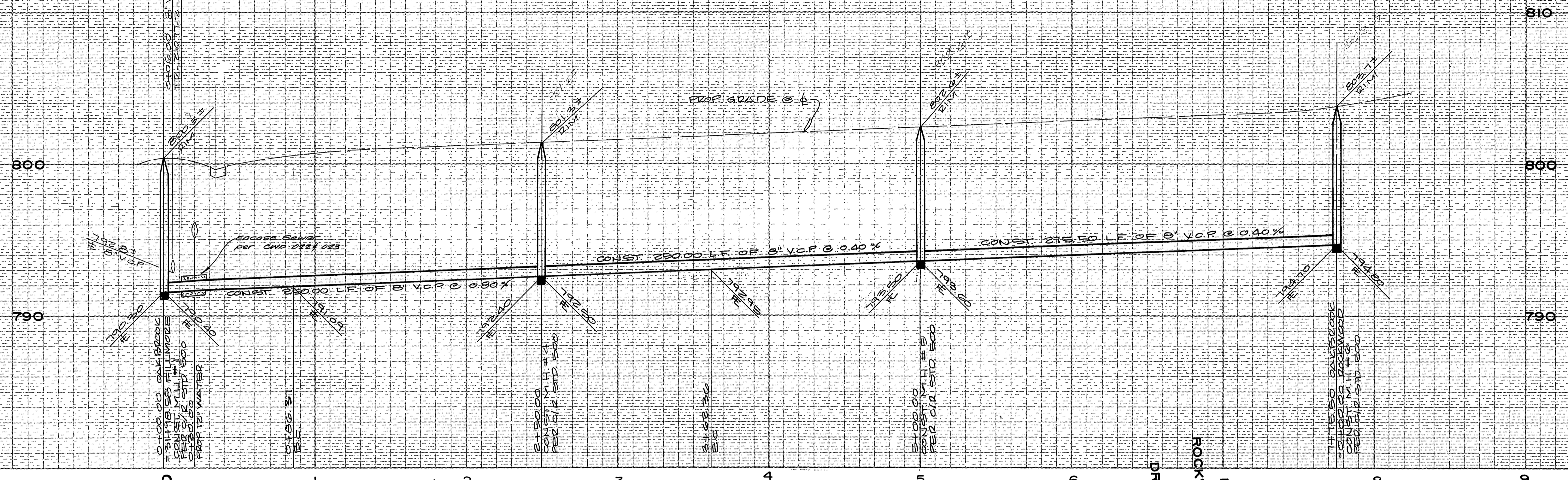


WESTERN MUNICIPAL WATER DISTRICT REVIEWED BY: <i>[Signature]</i> 12/14/87 CHIEF ENGINEER, DATE R.C.E. 17984	CITY OF RIVERSIDE WATER SYSTEM APPROVED BY: <i>[Signature]</i> 11/9/87 APPROVED DATE
---	---

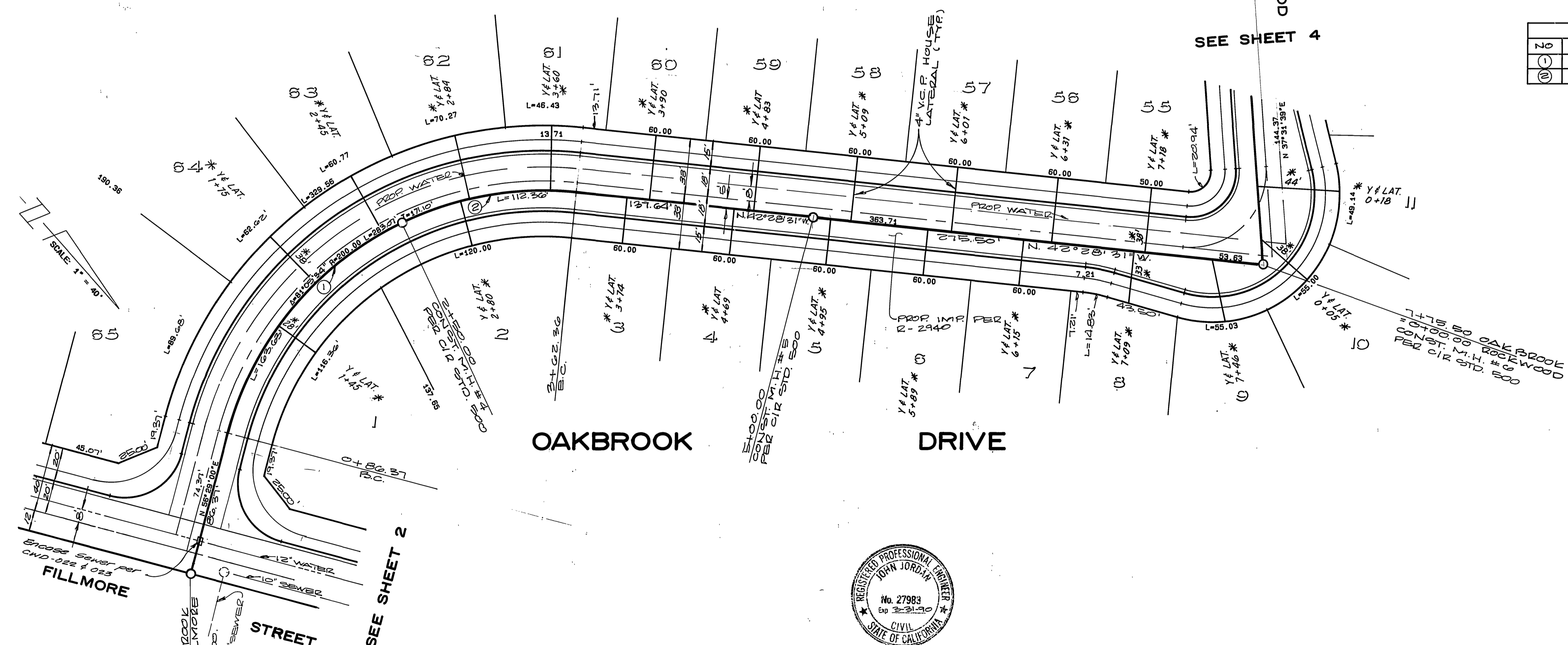
ALBERT A. WEBB ASSOCIATES CIVIL ENGINEERS 3738 MACDONALD ST. RIVERSIDE, CALIFORNIA (714) 920-1010	
APPROVED BY: <i>[Signature]</i> DATE 8/3/87	R.E. No. 27983
W.O. 87-75 FOR CONCORDIA DEV. CORP. F.B.	

CITY OF RIVERSIDE, CALIFORNIA PUBLIC WORKS DEPARTMENT	
APPROVED BY: <i>[Signature]</i> DATE 3/7/88	APPROVED BY: <i>[Signature]</i> DATE 3/7/88
PRINCIPAL ENGINEER	DIRECTOR OF PUBLIC WORKS
TRAFFIC DIVISION	
CHIEF PUB. WKS. ENGR. <i>[Signature]</i>	

TRACT NO. 22598 INDEXED 9-10-88 4H	
SEWER IMPROVEMENT PLAN & PROFILE	
FILLMORE STREET	
ACCOUNT NO. DRAWING NUMBER	S-1493
SHEET 2 OF 6	87-75.B
SCALE: HORIZ. 1"=40' VERT. 1"=4'	



CURVE DATA			
No	Δ	R	T
①	48°04'43"	195.00'	86.92'
②	33°00'51"	195.00'	57.79'



BENCH MARK
 City of Riverside B.M. D3-D. R.M. nail & tag
 in 1 1/4" cement bank of A.W.C. canal on
 Ely side of Fillmore St. 1/2 R.B. 739/55.
 Elevation 797.236



CITY OF RIVERSIDE
 WATER SYSTEM
 APPROVED: *Carl Weingarten* 11/9/87
 DATE

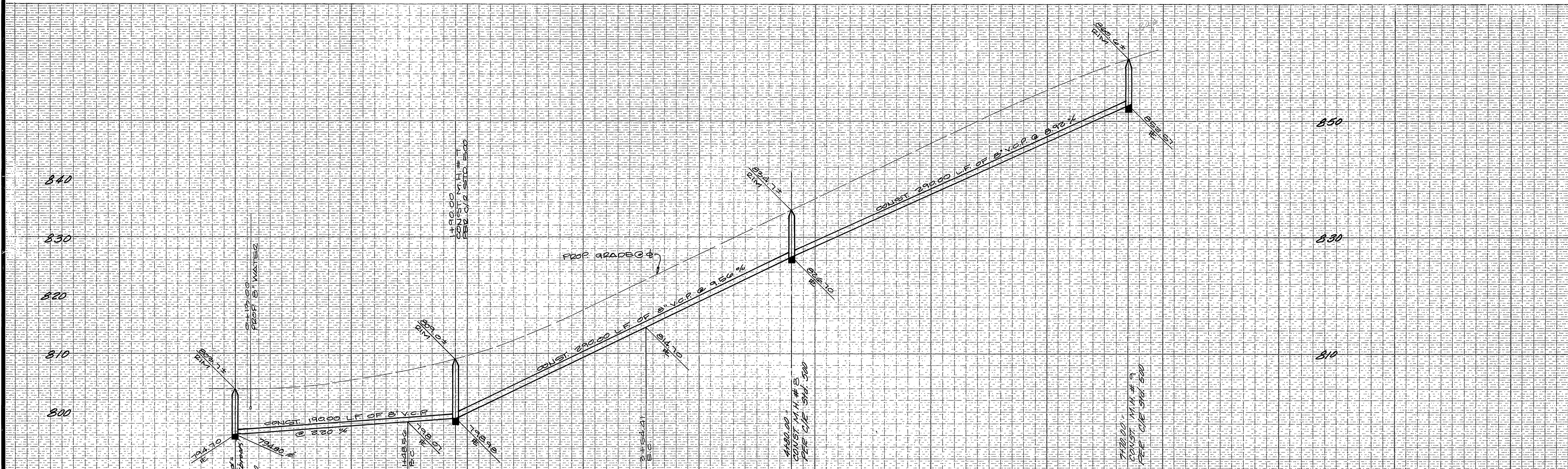
ALBERT A. WEBB ASSOCIATES
 CIVIL ENGINEERS
 2180 M. COVAT ST.
 RIVERSIDE, CALIFORNIA
 (714) 986-1010
 APPROVED BY: *CHU CHEN* DATE: 3/3/87
 R.E. No. 27983

CITY OF RIVERSIDE, CALIFORNIA
 PUBLIC WORKS DEPARTMENT
 APPROVED BY: *BARRY BOB* DATE: 3/7/88
 PRINCIPAL ENGINEER
 TRAFFIC DIVISION
 CHIEF PUB. WKS. ENGR. DATE: 3/2/88

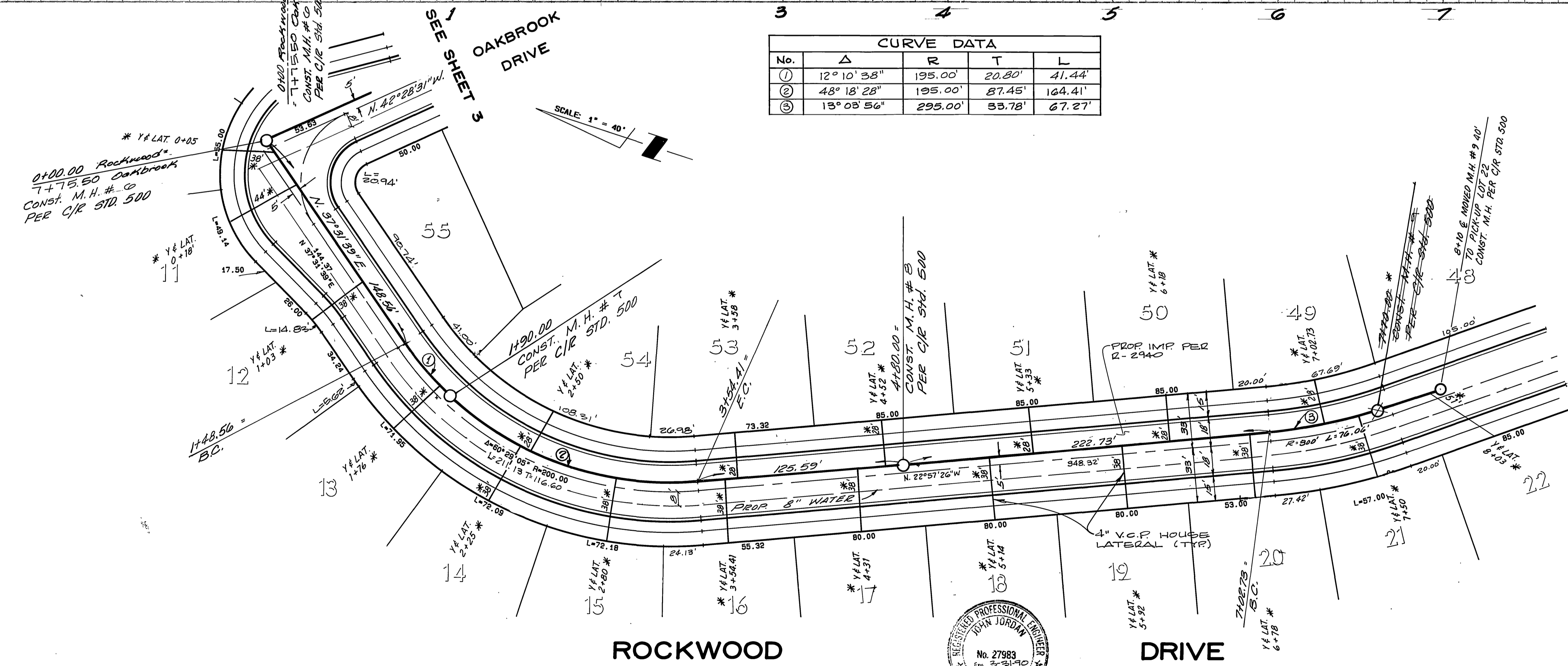
TRACT NO. 22598 INDEXED 5-10-88 4H

SEWER IMPROVEMENT
 PLAN & PROFILE
OAKBROOK DRIVE
 ACCOUNT No. S-1493
 DRAWING NUMBER
 SHEET 3 OF 6
 87-75.B

SCALE: HORIZ. 1" = 40' VERT. 1" = 4'



CURVE DATA				
No.	Δ	R	T	L
①	12° 10' 38"	195.00'	20.80'	41.44'
②	48° 18' 28"	195.00'	87.45'	164.41'
③	13° 03' 56"	295.00'	53.78'	67.27'



BENCH MARK
 CITY OF RIVERSIDE D3-D P.K. NAIL & TAG
 IN NLY CEMENT BANK OF R.W.C. CANAL ON
 ELY SIDE OF FILLMORE ST. C.R. P.D. 739/55
 ELEVATION 797.286

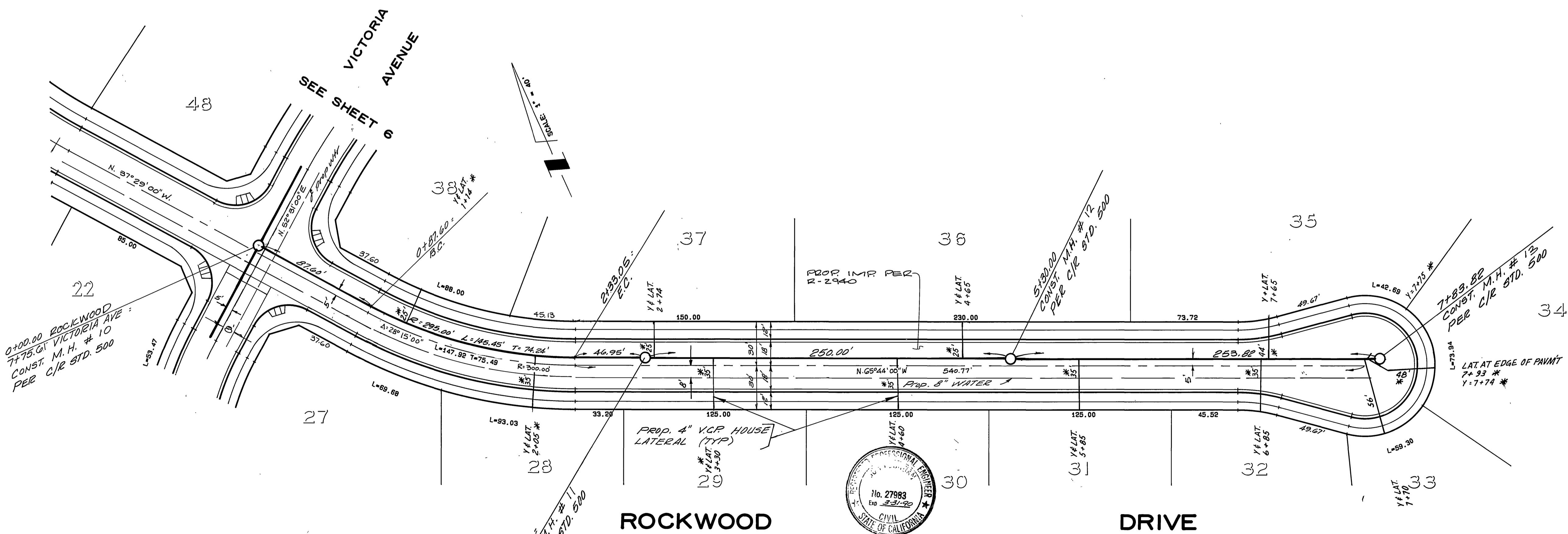
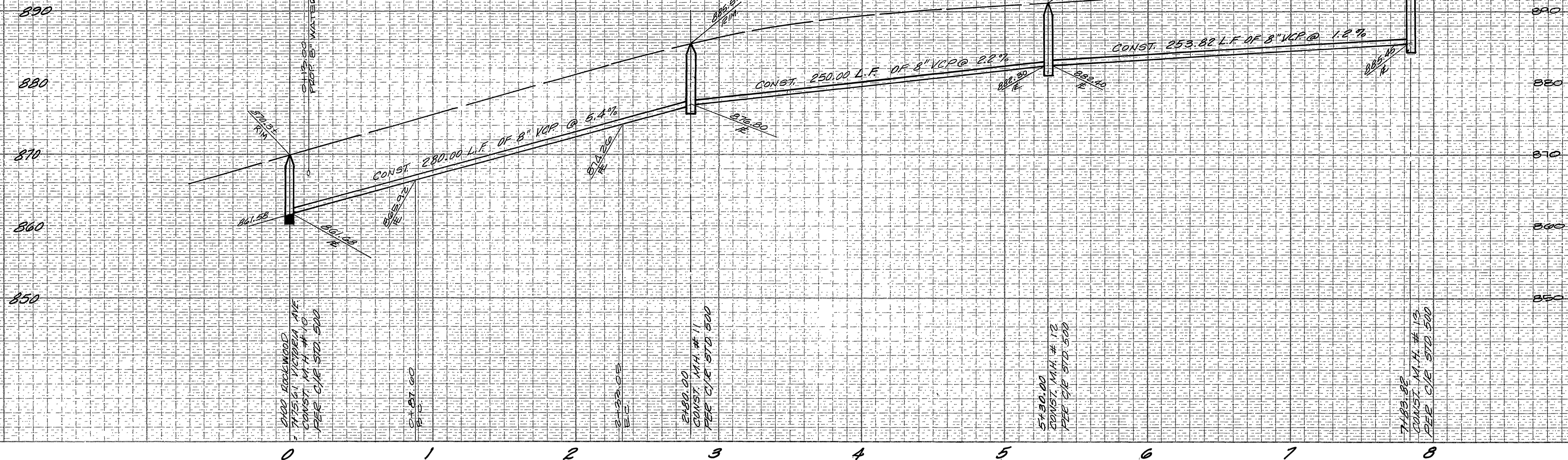
CITY OF RIVERSIDE
 WATER SYSTEM
 APPROVED BY *Carl Wengert* DATE *11/4/87*

ALBERT A. WEBB ASSOCIATES
 CIVIL ENGINEERS
 RIVERSIDE CALIFORNIA
 APPROVED BY *[Signature]* DATE *3/3/87*
 R.E. No. 27983

MARK REVISIONS
 APPR. DATE
 DESIGNED BY *RH* DRAWN BY *RH* CHECKED BY *RLT*

CITY OF RIVERSIDE, CALIFORNIA
 PUBLIC WORKS DEPARTMENT
 APPROVED BY *[Signature]* DATE *3/7/88*
 PRINCIPAL ENGINEER
 PARK DEPARTMENT
 TRAFFIC DIVISION
 CHIEF PUB. WKS. ENGR. *[Signature]*

TRACT NO. 22598 INDEXED 5-10-88 44
 ACCOUNT No. **SEWER IMPROVEMENT PLAN & PROFILE**
ROCKWOOD DRIVE
 SCALE: HORIZ. 1" = 40' VERT. 1" = 8'
 DRAWING NUMBER **S-1493**
 SHEET **4** OF **6**
 ACCOUNT No. **87-75.B**



BENCH MARK:
 CITY OF RIVERSIDE D3-D. PK. NAIL & TAG
 IN N'LY CEMENT BANK OF R.W.C. CANAL ON
 E'LY SIDE OF FILLMORE ST. C/R FB 739/55
 EL. 797.286

CITY OF RIVERSIDE
 WATER SYSTEM
 APPROVED *Carl Wengert* DATE 11/9/87

ALBERT A. WEBB ASSOCIATES
 CIVIL ENGINEERS
 RIVERSIDE, CALIFORNIA
 APPROVED BY *Albert A. Webb* DATE 8/2/87
 R.E. No. 27983

CITY OF RIVERSIDE, CALIFORNIA
 PUBLIC WORKS DEPARTMENT
 APPROVED BY *Barry Red* DATE 3/7/88
 CHIEF PUB. WKS. ENGR.

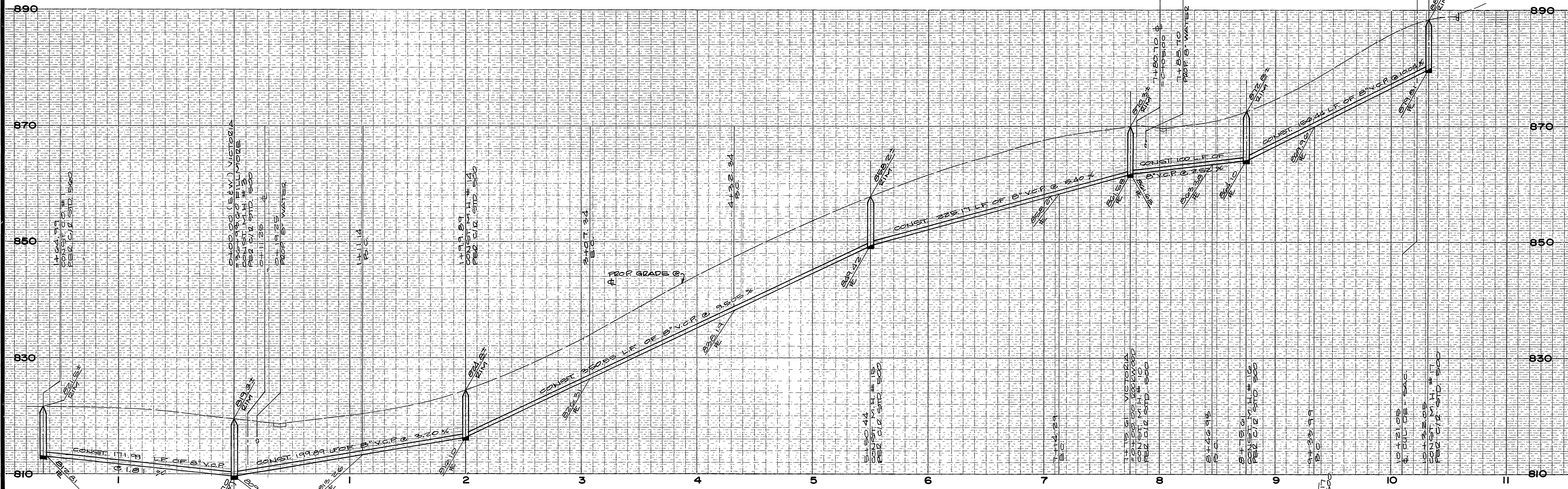
TRACT NO. 22598
 SEWER IMPROVEMENT
 PLAN & PROFILE
ROCKWOOD DRIVE
 ACCOUNT No. S-1493
 DRAWING NUMBER 5 OF 6
 SHEET 5 OF 6
 SCALE: HORIZ. 1" = 40' VERT. 1" = 8'



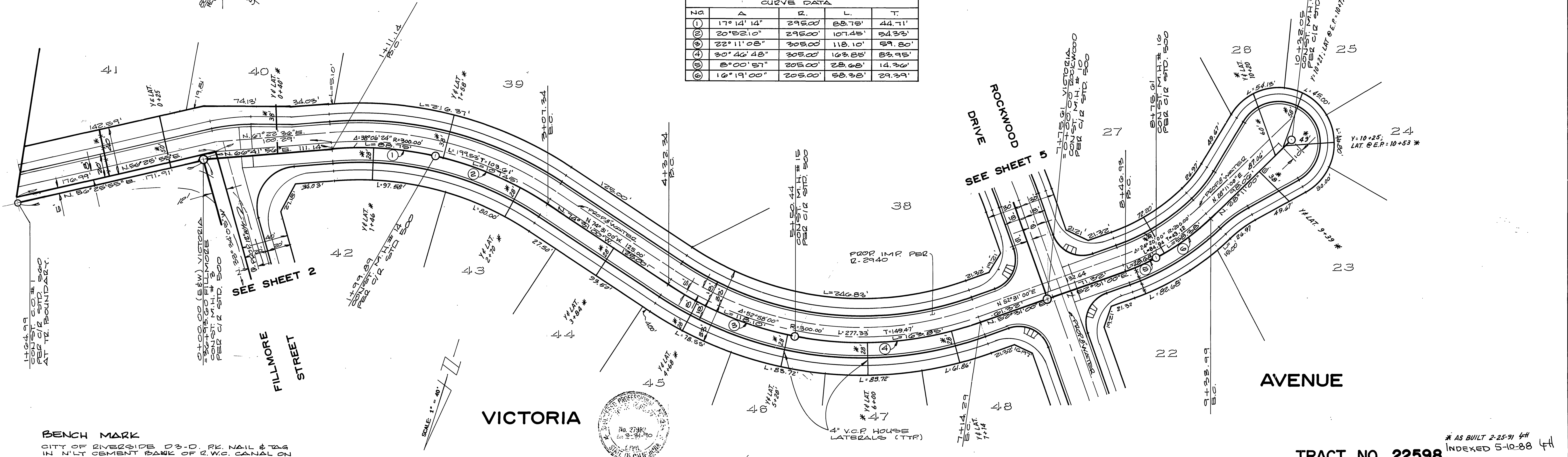
* AS BUILT 2-25-91 4H
 INDEXED 5-10-88 4H

W.O. 87-75 FOR CONCORDIA DEV. CORP. F.B.

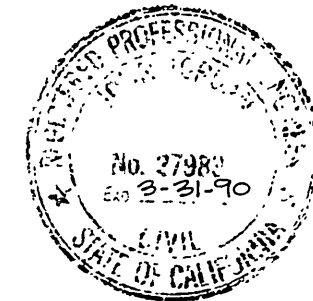
F&O



CURVE DATA			
No	A	R	T
1	17° 14' 14"	295.00'	44.71'
2	20° 52' 10"	295.00'	54.33'
3	22° 11' 08"	305.00'	59.80'
4	30° 46' 48"	305.00'	82.95'
5	8° 00' 57"	205.00'	14.36'
6	16° 19' 00"	205.00'	29.39'



BENCH MARK
 CITY OF RIVERSIDE D 3-D, R.R. NAIL & 1/4
 IN 1 1/2" CEMENT BANK OF R.W. CANAL ON
 S.W. SIDE OF FILLMORE ST. CIR. FB. 129/85
 ELEVATION 197.286



CITY OF RIVERSIDE
 WATER SYSTEM
 APPROVED: *Carl Weingarten* 4/9/87
 DATE

ALBERT A. WEBB ASSOCIATES
 CIVIL ENGINEERS
 RIVERSIDE, CALIFORNIA
 APPROVED BY: *Albert A. Webb* DATE: 8/3/87
 R.E. No. 27982

MARK REVISIONS APPR. DATE
 DESIGNED BY: RH DRAWN BY: RH CHECKED BY: RLT
 PREP

CITY OF RIVERSIDE, CALIFORNIA
 PUBLIC WORKS DEPARTMENT
 APPROVED BY: *Barry Bed* DATE: 3/7/88
 CHIEF PUB. WORKS ENGR.

TRACT NO. 22598
 SEWER IMPROVEMENT
 PLAN & PROFILE
VICTORIA AVENUE
 SCALE: HORIZ. 1" = 40' VERT. 1" = 5'
 ACCOUNT NO. DRAWING NUMBER
 S-1493
 SHEET 6 OF 6
 87-75-B