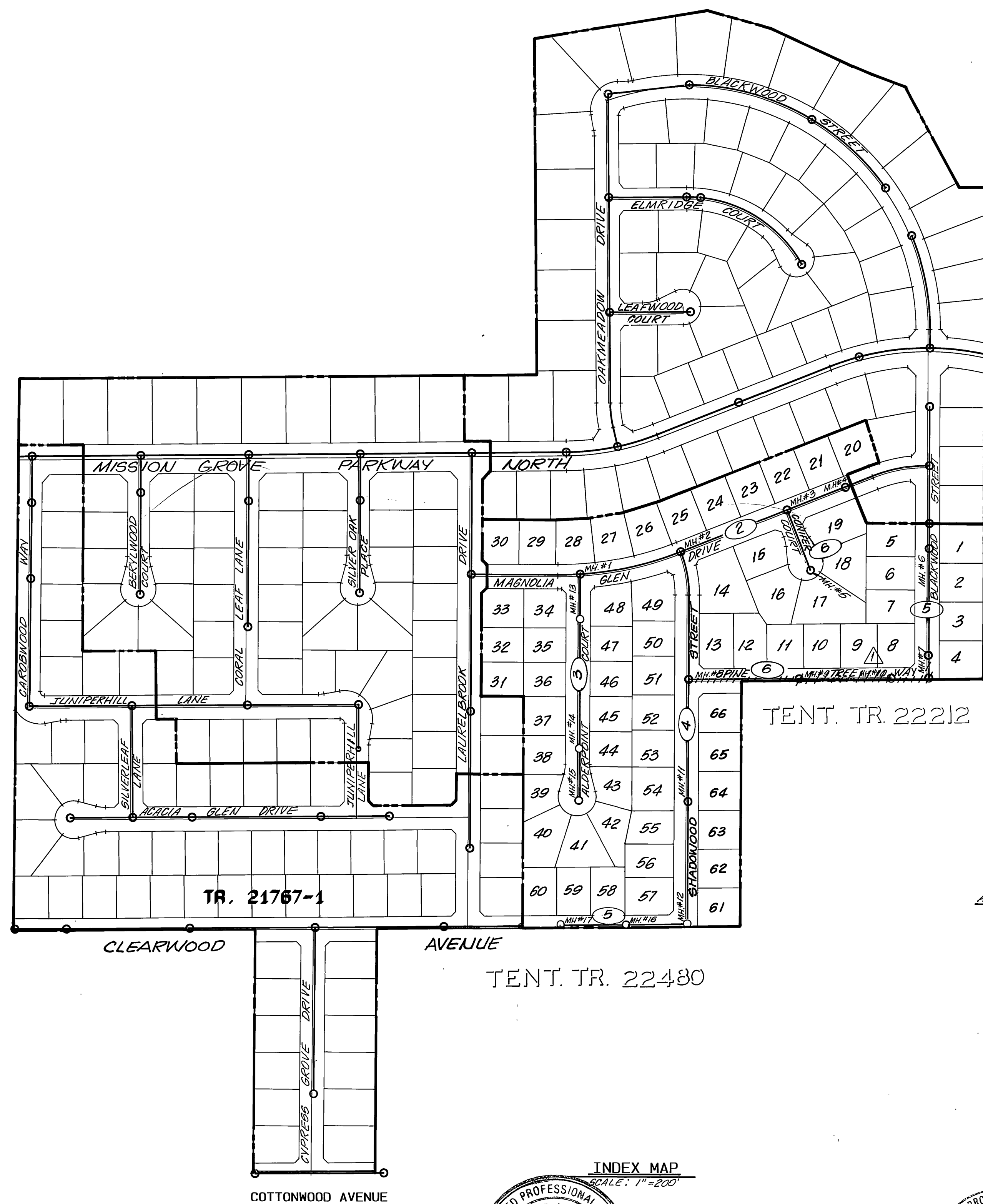


GENERAL NOTES

- IT SHALL BE THE RESPONSIBILITY OF THE CONTRACTOR TO CLEAR THE RIGHT-OF-WAY IN ACCORDANCE WITH THE PROVISIONS OF LAW AS IT AFFECTS EACH UTILITY INCLUDING IRRIGATION LINES AND APPURTENANCES AND AT NO COST TO THE CITY.
- CONSTRUCTION SHALL BE IN ACCORDANCE WITH THE CITY OF RIVERSIDE DEPARTMENT OF PUBLIC WORKS, STANDARD DRAWINGS, STANDARD DRAWING NO. 10 AND THE STANDARD SPECIFICATIONS FOR PUBLIC WORKS CONSTRUCTION, CURRENT EDITION.
- THE PRIVATE ENGINEER SIGNING THESE PLANS IS RESPONSIBLE FOR ASSURING THE ACCURACY AND ACCEPTABILITY OF THE WORK HEREON. IN THE EVENT OF DISCREPANCIES ARISING DURING CONSTRUCTION, THE PRIVATE ENGINEER SHALL BE RESPONSIBLE FOR DETERMINING AN ACCEPTABLE SOLUTION AND REVISING THE PLANS FOR APPROVAL BY THE CITY.
- QUANTITIES SHOWN ARE FOR INFORMATION ONLY AND THE CITY OF RIVERSIDE IS NOT RESPONSIBLE FOR THEIR ACCURACY.
- THE DEVELOPER SHALL BE RESPONSIBLE FOR PRESERVING OR RE-ESTABLISHING AND REFERENCING SURVEY MONUMENTS DESTROYED, DISTURBED, OR BURIED AS A RESULT OF CONSTRUCTION SHOWN HEREON.
- ALL FLAGGED ELEVATIONS SHALL BE STAKED IN THE FIELD BY THE PRIVATE ENGINEER.
- THE CONTRACTOR SHALL CALL IN A LOCATION REQUEST TO UNDERGROUND SERVICE ALERT (USA), PHONE NO. 1-800-422-4133, TWO WORKING DAYS BEFORE DIGGING. NO CONSTRUCTION PERMIT WILL BE ISSUED BY THE PUBLIC WORKS DEPARTMENT INVOLVING EXCAVATION FOR UNDERGROUND FACILITIES UNLESS THE APPLICANT HAS BEEN PROVIDED AN UNQUIRY IDENTIFICATION NUMBER BY U.S.A..
- CONTRACTOR IS TO VERIFY EXISTING SEWER ELEVATION PRIOR TO CONSTRUCTION.
- LOCATION OF LATERALS TO BE DETERMINED IN THE FIELD AT THE DIRECTION OF THE OWNER. AVOID CONFLICT WITH PROPOSED AND/OR EXISTING FACILITIES.
- NO FINISHED FLOOR/ELEVATION SHALL BE LESS THAN 4' ABOVE THE SEWER FLOW LINE AT POINT OF CONNECTION WITHOUT HAVING A PROPER BACKWATER VALVE INSTALLED IN THE LATERAL.
- THE SEWER CONTRACTOR SHALL ADJUST MANHOLES TO FINAL GRADE AFTER PAVING IS COMPLETED.
- A PLUG SHALL BE INSTALLED AND WILL REMAIN IN PLACE WHERE THE NEW SEWER CONNECTS WITH THE EXISTING SEWER UNTIL THE NEW SEWER IS ACCEPTED BY THE CITY.

CONSTRUCTION NOTES

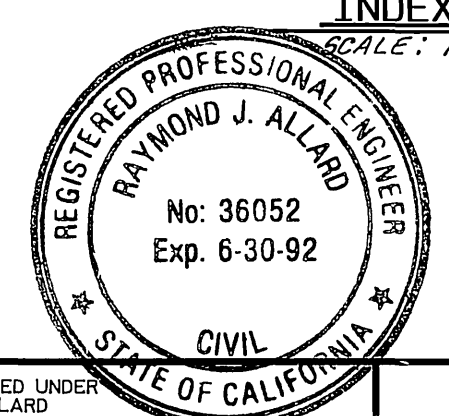
①	CONSTRUCT 8" V.C.P. SEWER MAIN	4030	L.F.
②	CONSTRUCT 4" V.C.P. HOUSE LATERALS	2009	L.F.
③	CONSTRUCT MANHOLE PER CITY OF RIVERSIDE STANDARD NO. 500	17	EA.
④	CONSTRUCT CLEANOUT PER CITY OF RIVERSIDE STANDARD NO. 560	0	EA.



SCALE: 1" = 200'

TENT. TR. 21631

TENT. TR. 22212



BENCH MARK:
BENCH MARK FB-C: P.K. NAIL AND TAG IN N'LY END OF 6' X 15' X 3' HIGH GRANITE ROCK N'LY OF INTERSECTION OF ALESSANDRO BLVD. AND TRAUTWEIN RD. FB735/72. ELEVATION 1627.344

UNAUTHORIZED CHANGES & USES
CAUTION: THE ENGINEER PREPARING THESE PLANS WILL NOT BE RESPONSIBLE FOR, OR LIABLE FOR, UNAUTHORIZED CHANGES TO OR USES OF THESE PLANS. ALL CHANGES TO THE PLANS MUST BE IN WRITING AND MUST BE APPROVED BY THE PREPARER OF THESE PLANS.

REVISION AS OF MAY 15, 1989 PREPARED UNDER THE SUPERVISION OF RAYMOND J. ALLARD

Raymond J. Allard 4/9/89 DATE

FUSCO WILLIAMS LINDGREN & SHORT
Civil Engineers & Land Surveyors
11621 Serrano Avenue, Suite A
Riverside, California 92503
(714) 354-0164 FAX (714) 354-0810

REVIEWED BY WESTERN MUNICIPAL WATER DISTRICT

[Signature] 3.10.88 DATE
CHIEF ENGINEER, RCE 17984

HAWKINS, ROBERTSON & ASSOCIATES
ENGINEERS & SURVEYORS
(714) 684-9522
3764 ELIZABETH ST. RIVERSIDE, CA. 92506

REGISTRATION EXPIRES: 3-31-89

Charles E. Robertson 10-28-87 DATE
R.C.E. No. 15,016

DESIGNED BY *[Signature]* DRAWN BY *[Signature]* CHECKED BY *[Signature]*

APPR. DATE 4/2/89
MARK REVISIONS

CITY OF RIVERSIDE
PUBLIC WORKS DEPARTMENT

APPROVED BY *[Signature]* DATE 3-1-88
PRINCIPAL ENGINEER

APPROVED BY *[Signature]* DATE 3/17/88
PUBLIC WORKS DIRECTOR

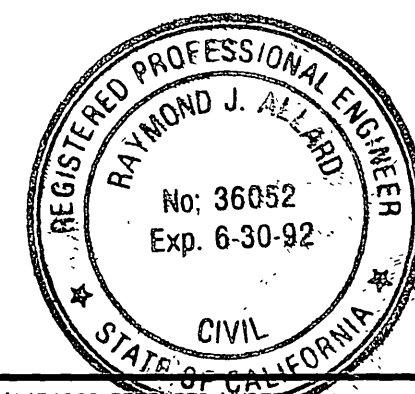
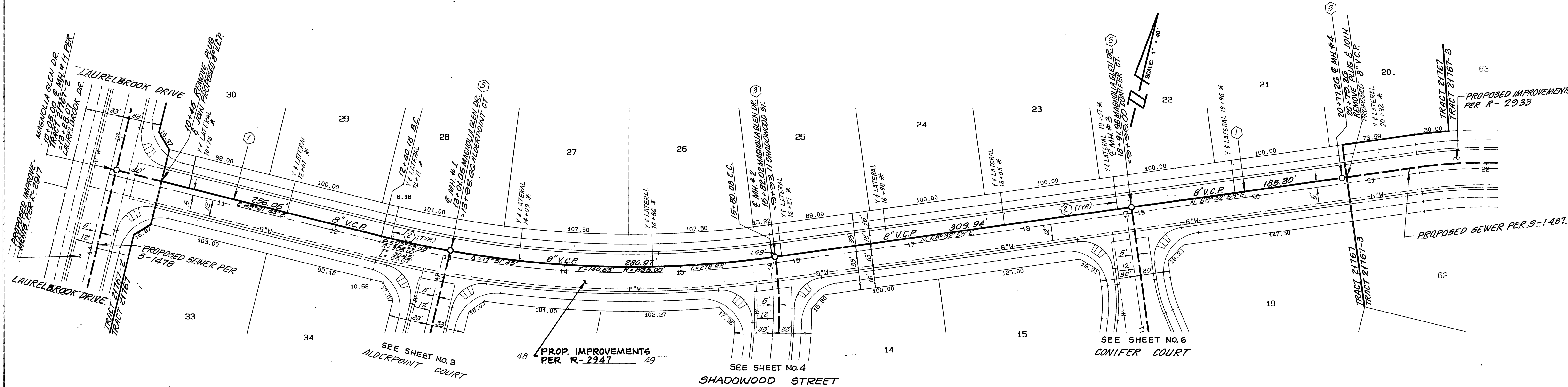
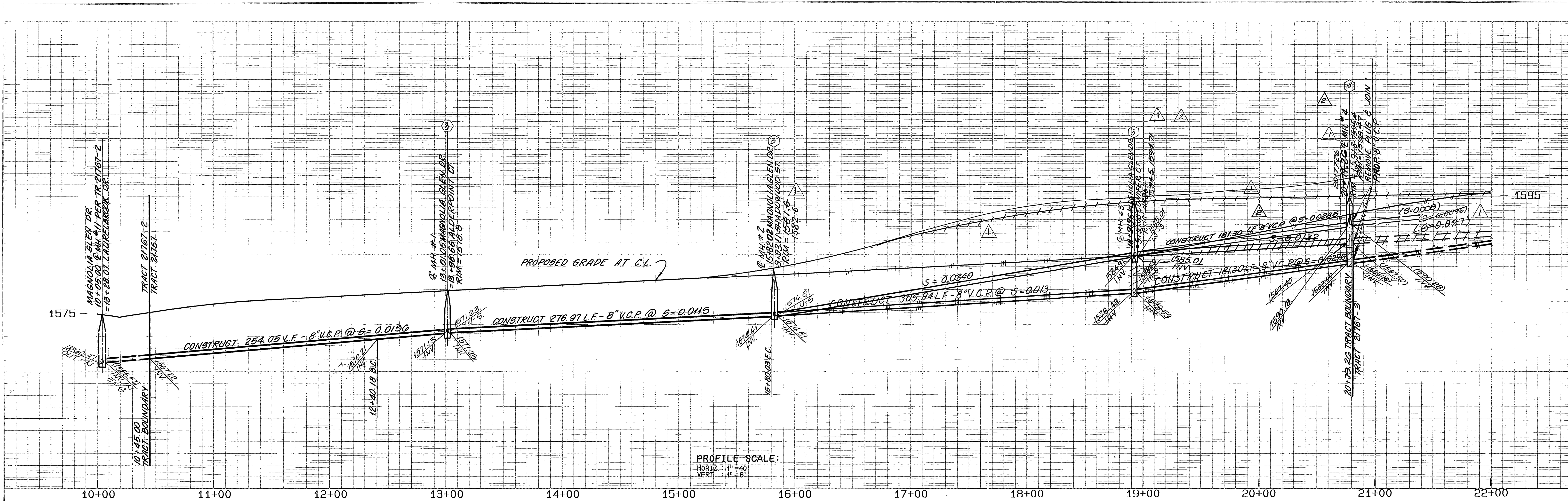
TRAFFIC DIVISION
CHIEF P. W. ENGINEER

TRACT 21767
SEWER PLANS TITLE SHEET

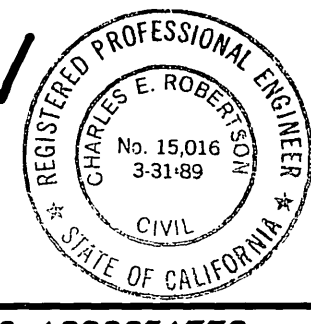
HORIZ. SCALE: AS SHOWN

ACCOUNT NO. 5-1497

SHEET 1 OF 6



MAGNOLIA GLEN DRIVE



BENCH MARK:
 BENCH MARK FB-C: P.K. NAIL AND TAG IN N'LY END OF 6' X 15' X 3" HIGH GRANITE ROCK N'LY OF INTERSECTION OF ALESSANDRO BLVD. AND TRAUTWEIN RD. FB795/72. ELEVATION 1627.344

UNAUTHORIZED CHANGES & USES
CAUTION: THE ENGINEER PREPARING THESE PLANS WILL NOT BE RESPONSIBLE FOR, OR LIABLE FOR, UNAUTHORIZED CHANGES TO OR USES OF THESE PLANS. ALL CHANGES TO THE PLANS MUST BE IN WRITING AND MUST BE APPROVED BY THE PREPARER OF THESE PLANS.

REVISION AS OF MAY 15, 1989 PREPARED BY THE SUPERVISION OF RAYMOND J. ALLARD
 Raymond J. Allard 6/19/87
 RAYMOND J. ALLARD, R.C.E. 36052
 EXPIRATION DATE: JUNE 30, 1992

FUSCOE WILLIAMS LINDGREN & SHORT
 Civil Engineers - Land Surveyors
 21631 Sterling Avenue, Suite A
 Riverside, California 92503
 (714) 354-0161
 FAX (714) 354-0160

WESTERN MUNICIPAL WATER DISTRICT
 REVIEWED BY: [Signature]
 RCE 2/15/89
 DATE

HAWKINS, ROBERTSON & ASSOCIATES
 ENGINEERS & SURVEYORS
 (714) 684-9522
 3764 ELIZABETH ST. RIVERSIDE, CA. 92506

REGISTRATION EXPIRES: 3-31-89
 10-28-97
 DATE

DESIGNED BY: [Signature] DRAWN BY: [Signature] CHECKED BY: [Signature]
 DATE

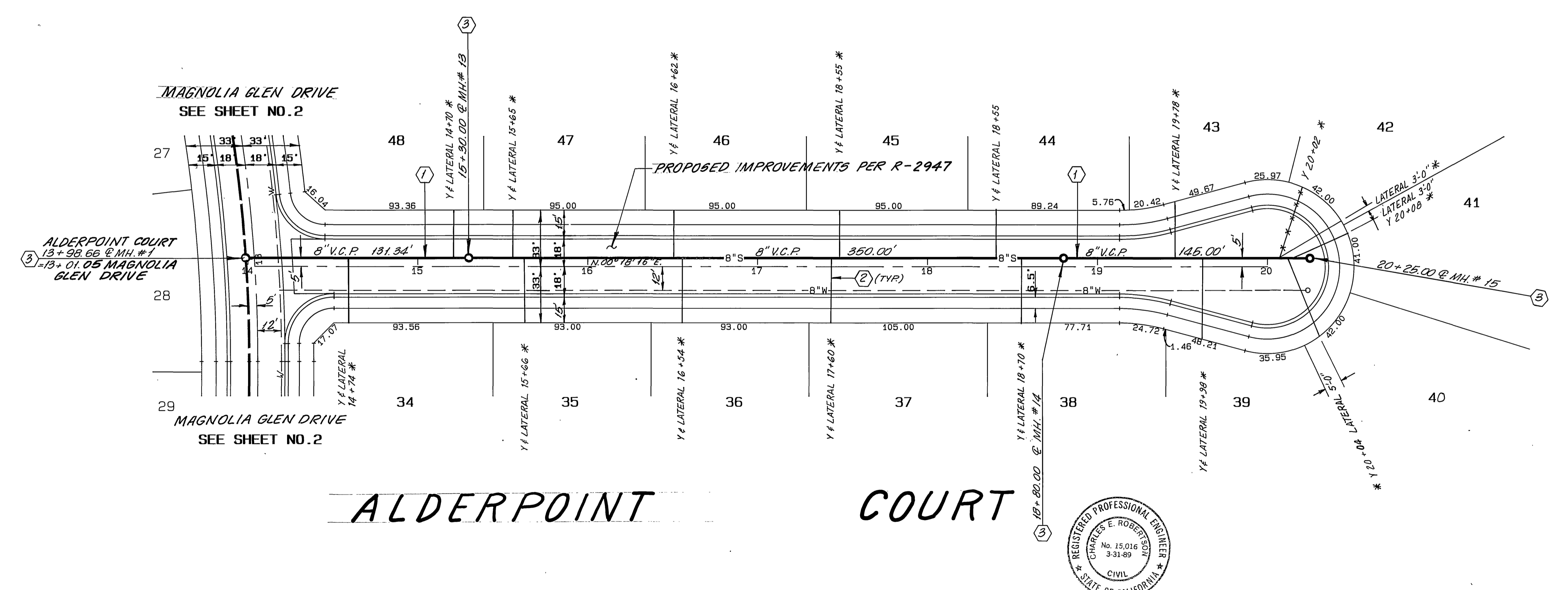
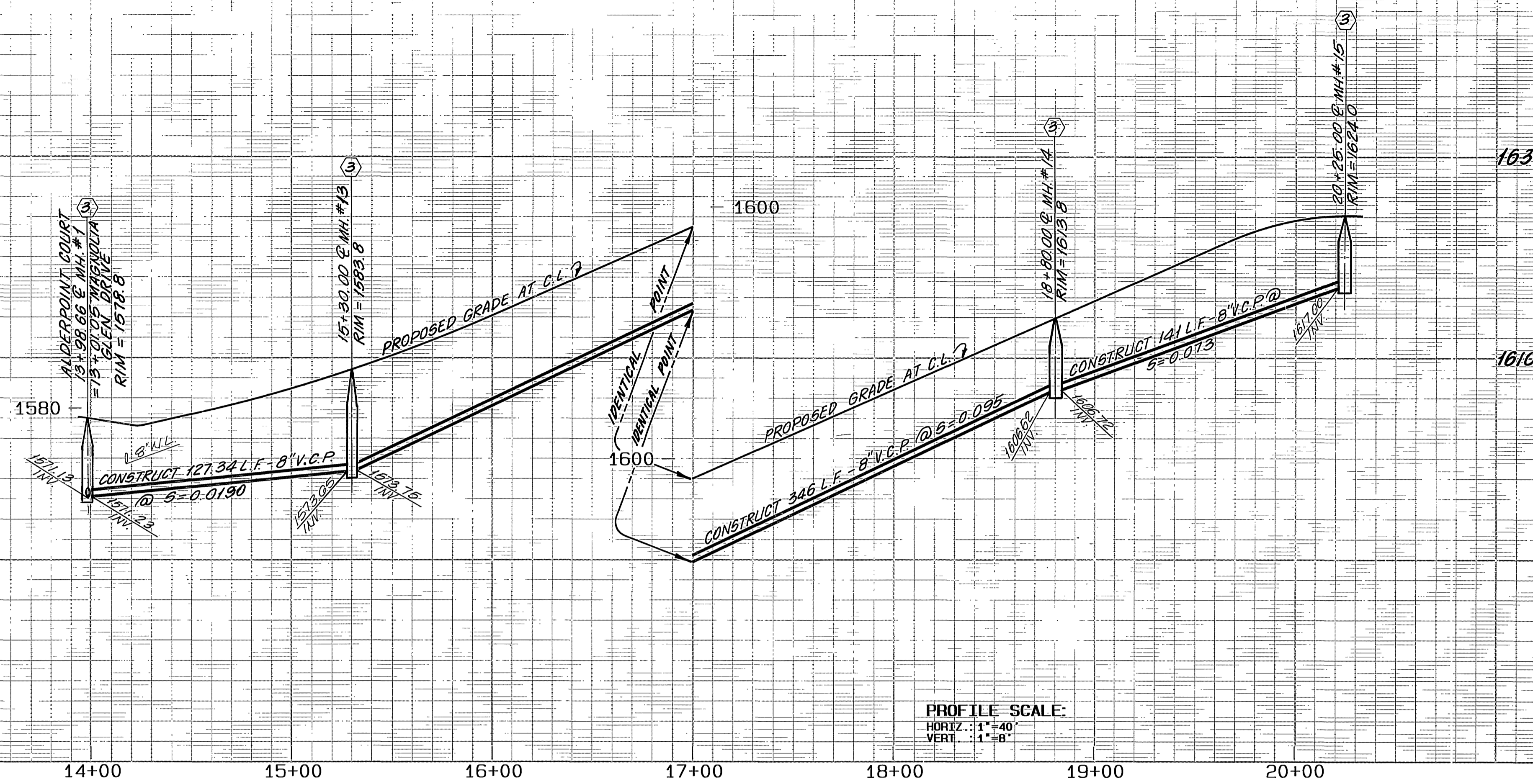
CITY OF RIVERSIDE
 PUBLIC WORKS DEPARTMENT

APPROVED BY: [Signature] DATE: 3/17/88
 PRINCIPAL ENGINEER
 PARK DEPARTMENT
 TRAFFIC DIVISION
 CHIEF P. W. ENGINEER

TRACT 21767
 SEWER PLAN AND PROFILE
 MAGNOLIA GLEN DRIVE
 STA. 10+05.00 TO STA. 20+79.26

HORIZ. SCALE: 1" = 40' VERT. SCALE: 1" = 8'

ACCOUNT NO. S-1497
 SHEET 2 OF 6



BENCH MARK:
 BENCH MARK FB-C: P.K. NAIL AND TAG IN N'LY END OF 6' X 15' X 3" HIGH GRANITE ROCK N'LY OF INTERSECTION OF ALESSANDRO BLVD. AND TRAUTWEIN RD. FB735/72. ELEVATION 1627.344

CAUTION: UNAUTHORIZED CHANGES & USES
 THE ENGINEER PREPARING THESE PLANS WILL NOT BE RESPONSIBLE FOR OR LIABLE FOR UNAUTHORIZED CHANGES TO OR USES OF THESE PLANS. ALL CHANGES TO THE PLANS MUST BE IN WRITING AND MUST BE APPROVED BY THE PREPARER OF THESE PLANS.

HAWKINS, ROBERTSON & ASSOCIATES
 ENGINEERS & SURVEYORS
 (714) 684-9522
 3764 ELIZABETH ST. RIVERSIDE, CA. 92506

REGISTRATION EXPIRES: 3-31-89

Charles E. Robertson
 R.C.E. No. 15,016 DATE 10-28-87

CITY OF RIVERSIDE
 PUBLIC WORKS DEPARTMENT

APPROVED BY: [Signature]
 DATE: 3-1-88

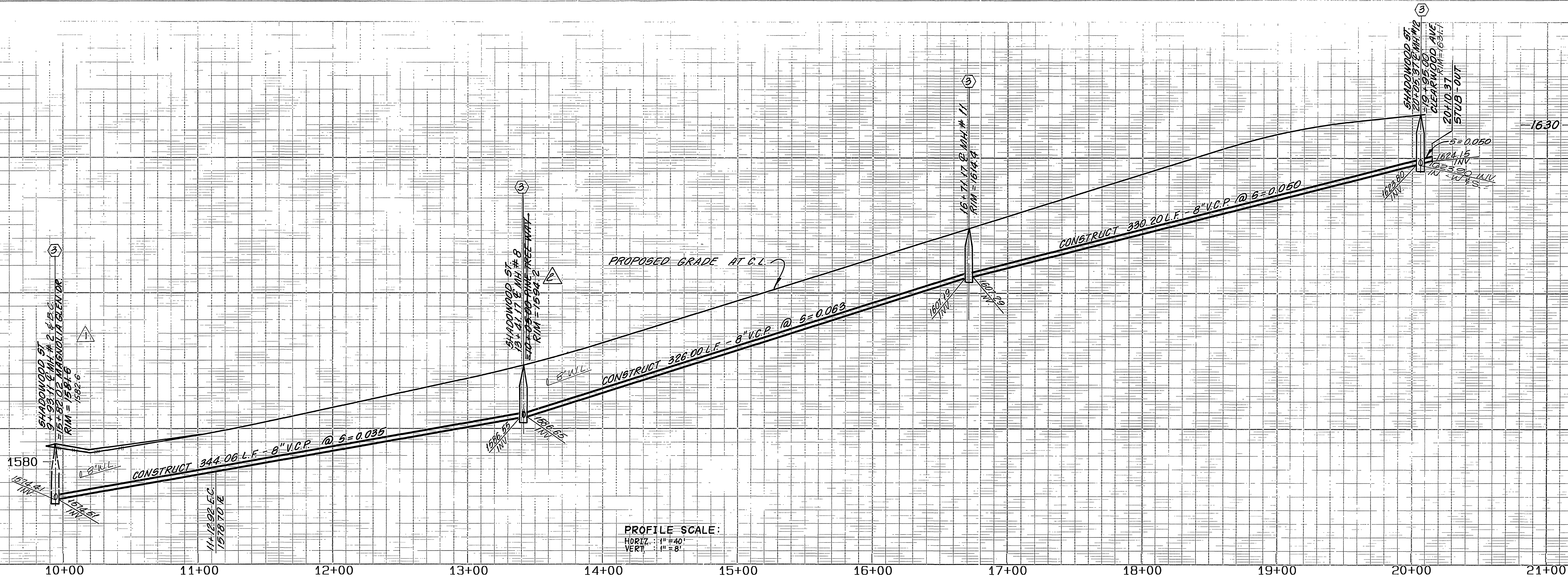
TRAFFIC DIVISION
 CHIEF P. W. ENGINEER

TRACT 21767
 SEWER PLAN AND PROFILE
 ALDERPOINT COURT
 STA. 13+98.66 TO STA. 20+25.00

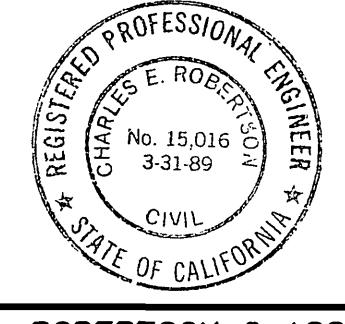
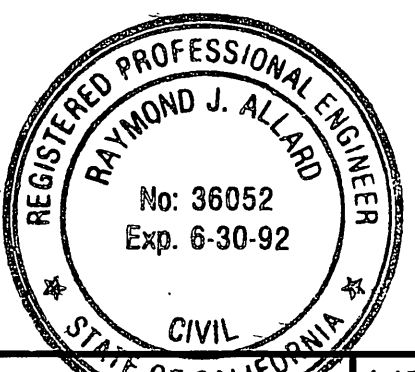
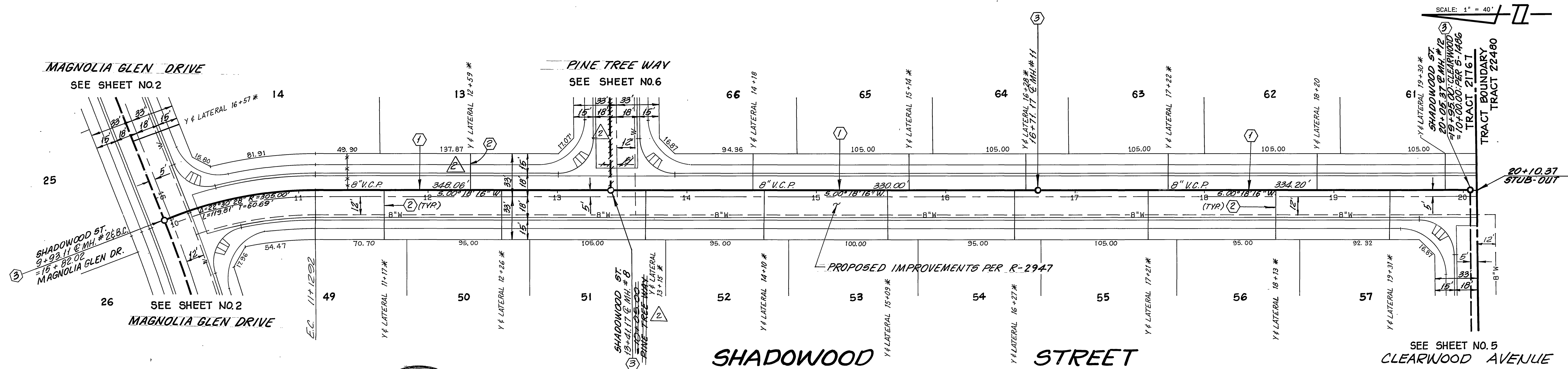
HORIZ. SCALE: 1"=40' VERT. SCALE: 1"=8'

ACCOUNT NO. S-1497
 SHEET 3 OF 6

INDEXED 9-9-88 LHM



PROFILE SCALE:
 HORIZ. 1" = 40'
 VERT. 1" = 8'



BENCH MARK:
 BENCH MARK F8-C: 11 P.K. NAIL AND TAG IN N'LY END OF 6' X 15' X 3" HIGH GRANITE ROCK N'LY OF INTERSECTION OF ALESSANDRO BLVD. AND TRAUTWEIN RD. FB795/72. ELEVATION 1627.344

UNAUTHORIZED CHANGES & USES
 CAUTION: THE ENGINEER PREPARING THESE PLANS WILL NOT BE RESPONSIBLE FOR, OR LIABLE FOR, UNAUTHORIZED CHANGES TO OR USES OF THESE PLANS. ALL CHANGES TO THE PLANS MUST BE IN WRITING AND MUST BE APPROVED BY THE PREPARER OF THESE PLANS.

REVISION AS OF MAY 15, 1989 PREPARED UNDER THE SUPERVISION OF RAYMOND J. ALLARD
 Raymond J. Allard 1/9/89
 RAYMOND J. ALLARD, R.C.E. 36052
 EXPIRATION DATE: JUNE 30, 1992

FUSCOE WILLIAMS LINDGREN & SHORT
 Civil Engineers - Land Surveyors
 21851 Sterling Avenue, Suite A
 Riverside, California 92503
 (714) 354-0866
 FAX (714) 354-0869

WESTERN MUNICIPAL WATER DISTRICT
 (INCL. A)
 REVIEWED BY:
 Thomas R. Spald
 R.C.E. 21043
 2/1/89
 DATE

HAWKINS, ROBERTSON & ASSOCIATES
 ENGINEERS & SURVEYORS
 (714) 684-9522
 3764 ELIZABETH ST. RIVERSIDE, CA. 92506

REGISTRATION EXPIRES: 3-31-89
 Charles E. Robertson 10-28-87
 R.C.E. No. 15,016
 DATE

PHLS-ADD NEW LATS.-DELETE RISE FROM SOW-MAN-12/105
 REVISED GRADES & ELEV. VLM/PLM
 REVISIONS VLM/PLM
 APPR. DATE
 DESIGNED BY U.S. DRAWN BY U.S. CHECKED BY JLT
 FRED

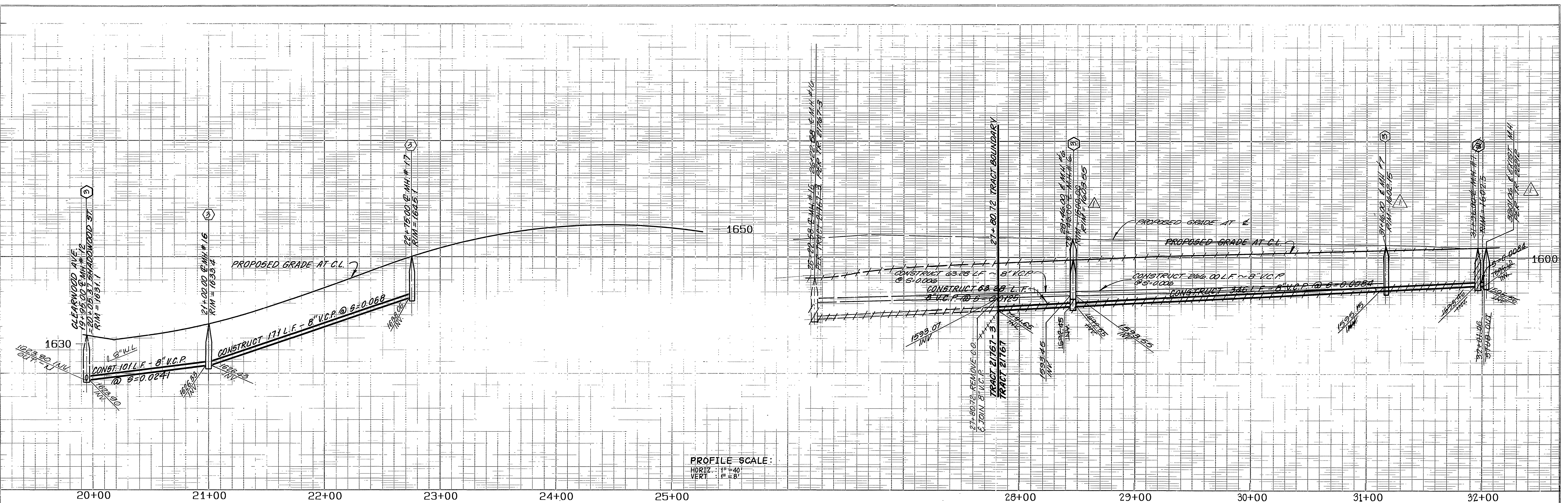
CITY OF RIVERSIDE
 PUBLIC WORKS DEPARTMENT

APPROVED BY DATE
 PRINCIPAL ENGINEER 1/12/88
 PARK DEPARTMENT
 TRAFFIC DIVISION
 DATE 3/7/88

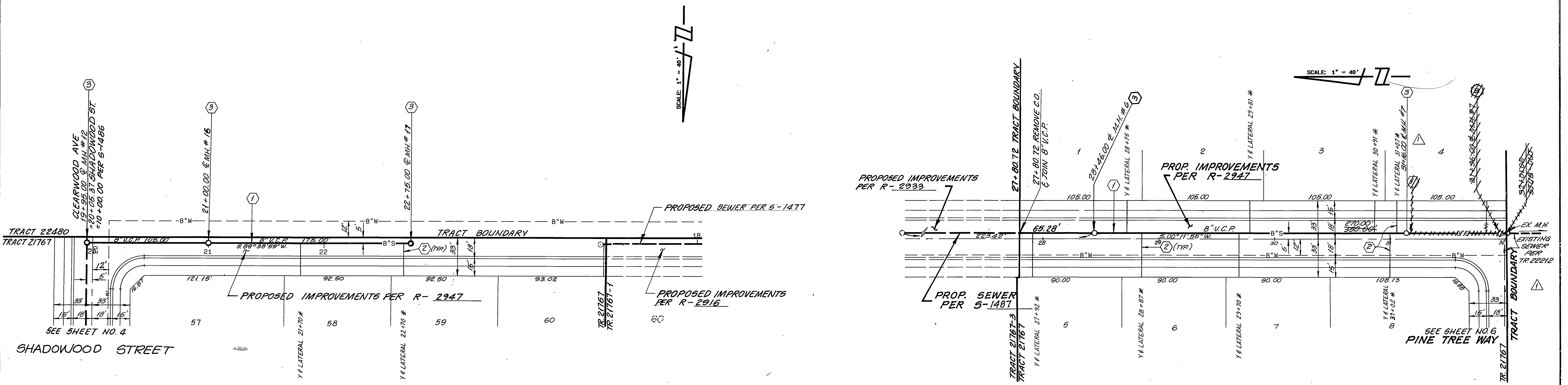
TRACT 21767
 SEWER PLAN AND PROFILE
 SHADOWWOOD STREET
 STA 9+93.11 TO 20+05.37

HORIZ. SCALE: 1" = 40' VERT. SCALE: 1" = 8'

ACCOUNT NO.
 5-1497
 SHEET 4 OF 6

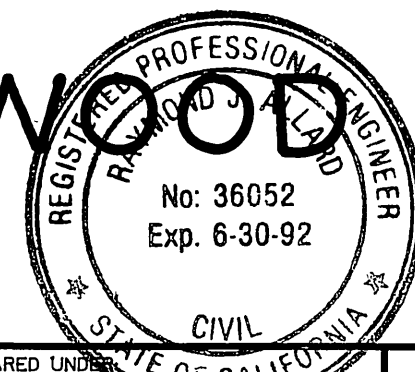


PROFILE SCALE:
 HORIZ. 1" = 40'
 VERT. 1" = 8'



CLEARWOOD AVENUE

BLACKWOOD STREET



BENCH MARK:
 BENCH MARK F8-C: P.K. NAIL AND TAG IN N'LY END OF 6' X 15' X 3" HIGH GRANITE ROCK N'LY OF INTERSECTION OF ALESSANDRO BLVD. AND TRAUTWEIN RD. FB735/72. ELEVATION 1627.344

UNAUTHORIZED CHANGES & USES
 CAUTION: THE ENGINEER PREPARING THESE PLANS WILL NOT BE RESPONSIBLE FOR, OR LIABLE FOR, UNAUTHORIZED CHANGES TO OR USES OF THESE PLANS. ALL CHANGES TO THE PLANS MUST BE IN WRITING AND MUST BE APPROVED BY THE PREPARER OF THESE PLANS.

REVISION AS OF MAY 15, 1989 PREPARED UNDER THE SUPERVISION OF RAYMOND J. ALLARD
Raymond J. Allard 6/9/89
 RAYMOND J. ALLARD, P.E. 36052
 EXPIRATION DATE: JUNE 30, 1992

FUSCOE WILLIAMS LINDGREN & SHORT
 21551 Sterling Avenue, Suite A
 Riverside, California 92503
 (714) 354-0162
 FAX (714) 354-0029
 Civil Engineers - Land Surveyors

HAWKINS, ROBERTSON & ASSOCIATES
 ENGINEERS & SURVEYORS
 (714) 684-9522
 3784 ELIZABETH ST. RIVERSIDE, CA. 92506

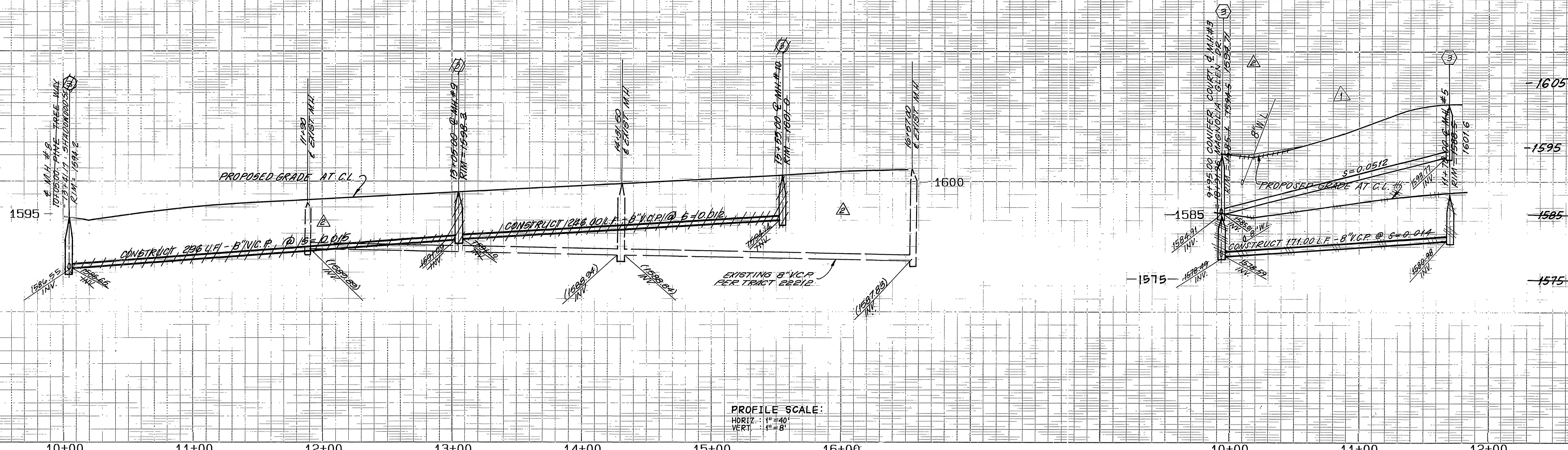
REGISTRATION EXPIRES: 3-31-89
Charles E. Robertson
 R.C.E. No. 15,016 DATE 10-28-87

CITY OF RIVERSIDE
 PUBLIC WORKS DEPARTMENT

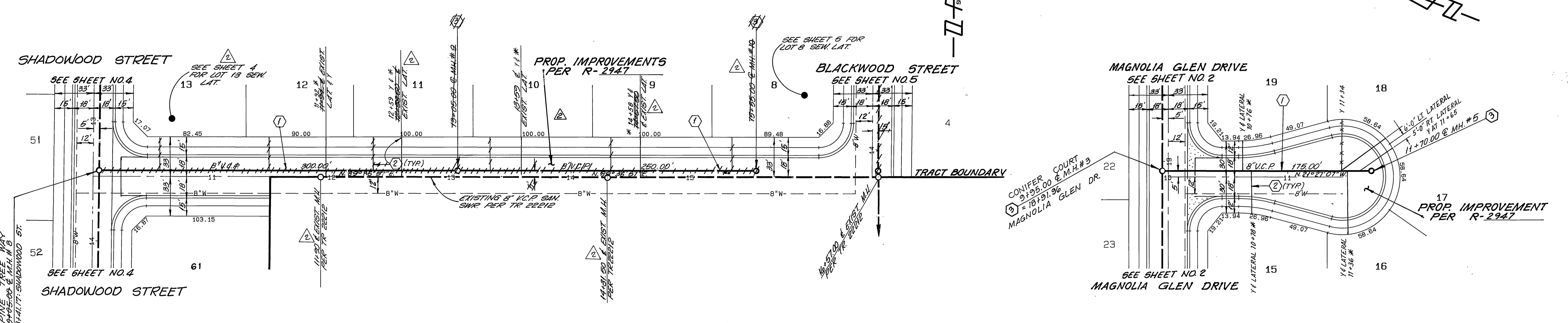
APPROVED BY: *Raymond J. Allard*
 DATE: 3-1-89
 PARK DEPARTMENT
 TRAFFIC DIVISION
 CHIEF P. W. ENGINEER
 DATE: 2/17/88

TRACT 21767
 SEWER PLAN AND PROFILE
 CLEARWOOD AVENUE
 STA. 19+95.00 TO STA. 22+75.00
 BLACKWOOD STREET
 STA. 21+80.72 TO STA. 32+01.06

ACCOUNT NO. 5-1497
 SHEET 5 OF 6
 HORIZ. SCALE: 1" = 40' VERT. SCALE: 1" = 8'



PROFILE SCALE:
 HORIZ. 1" = 40'
 VERT. 1" = 8'



PINE TREE WAY



CONIFER COURT

* AS BUILT 2-8-91 L.H.

BENCH MARK:
 BENCH MARK FB-C: P.K. NAIL AND TAG IN N'LY END OF 6' X 15' X 3" HIGH GRANITE ROCK N'LY OF INTERSECTION OF ALESSANDRO BLVD. AND TRAUTWEIN RD. F8735/72. ELEVATION 1627.344

UNAUTHORIZED CHANGES & USES
 CAUTION: THE ENGINEER PREPARING THESE PLANS WILL NOT BE RESPONSIBLE FOR, OR LIABLE FOR, UNAUTHORIZED CHANGES TO OR USES OF THESE PLANS. ALL CHANGES TO THE PLANS MUST BE IN WRITING AND MUST BE APPROVED BY THE PREPARER OF THESE PLANS.

PREPARED UNDER THE SUPERVISION OF RAYMOND J. ALLARD
 Raymond J. Allard
 Raymond J. Allard, R.C.E. 36052
 EXPIRATION DATE: JUNE 30, 1992

FUSCOE WILLIAMS LINDGREN & SHORT
 21851 Sterling Avenue, Suite A
 Riverside, California 92503
 (714) 314-0163
 FAX (714) 314-0800

WESTERN MUNICIPAL WATER DISTRICT
 (Encl: A)
 REVIEWED BY:
 RCE C 21042
 DATE: 2/9/99

HAWKINS, ROBERTSON & ASSOCIATES
 ENGINEERS & SURVEYORS
 (714) 684-9522
 3764 ELIZABETH ST. RIVERSIDE, CA. 92506

REGISTRATION EXPIRES: 3-31-89
 REVIEWED BY: Charles E. Robertson
 R.C.E. No. 15,016
 DATE: 10-28-87

REVISIONS
 1. FWLS - JOINED EXIST SEWER
 2. REVISED GRADES & ELEVATIONS
 DESIGNED BY: U.S. DRAWN BY: U.S. CHECKED BY: M.Z. DATE: 3/17/88

CITY OF RIVERSIDE
 PUBLIC WORKS DEPARTMENT

APPROVED BY: [Signature]
 DATE: 3-1-88
 PRINCIPAL ENGINEER
 PARK DEPARTMENT
 TRAFFIC DIVISION
 CHIEF P. W. ENGINEER

TRACT 21767
 SEWER PLAN AND PROFILE
 PINE TREE WAY
 STA. 10+05.00 TO STA. 15+55.00
 CONIFER COURT
 STA. 9+95.00 TO STA. 11+10.00

HORIZ. SCALE: 1" = 40' VERT. SCALE: 1" = 8'

ACCOUNT NO. 5-1497
 SHEET 6 OF 6