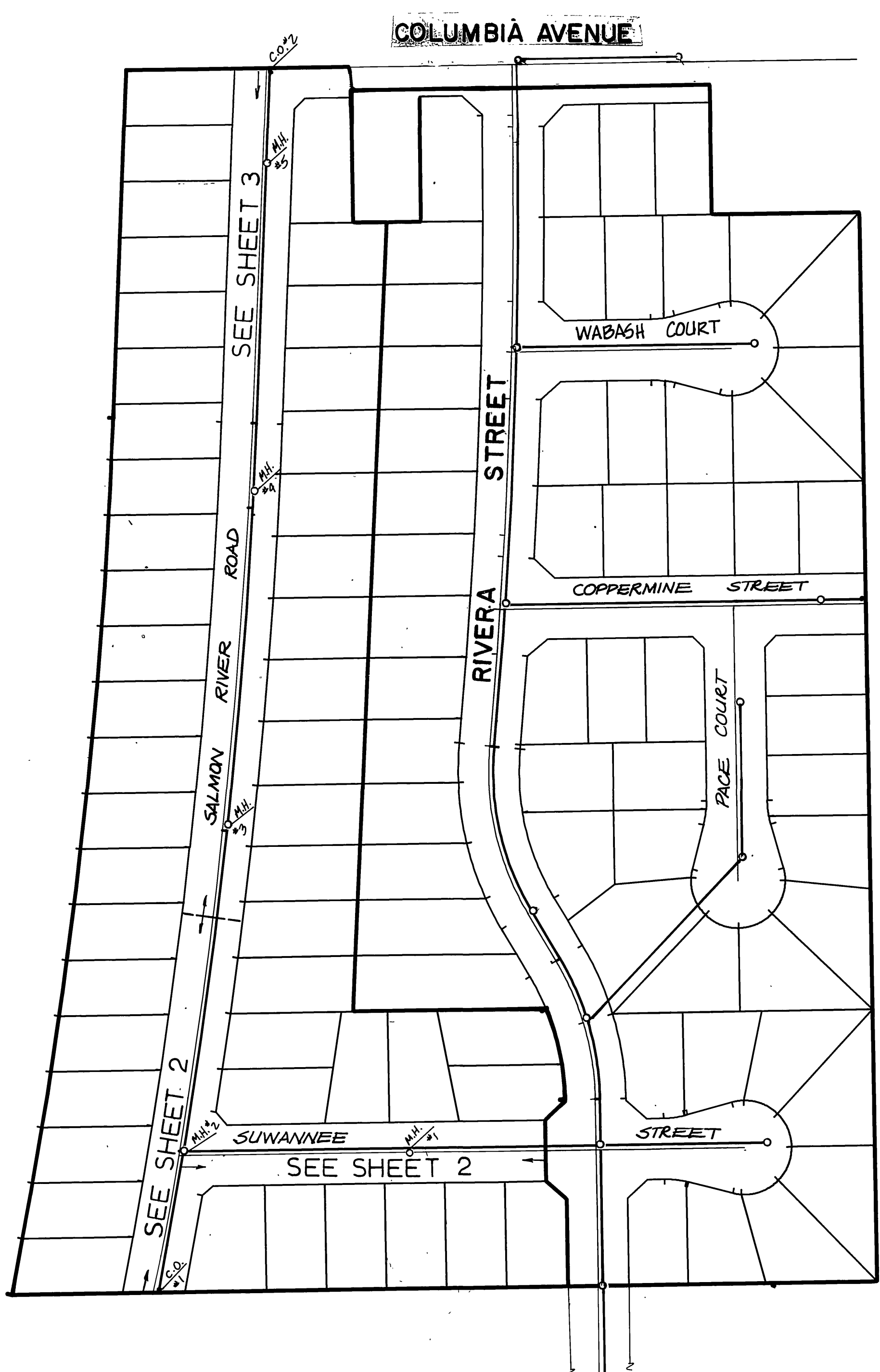
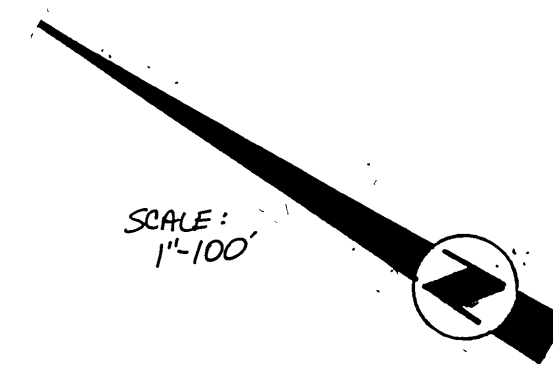


SEWER PLANS TRACT 22463



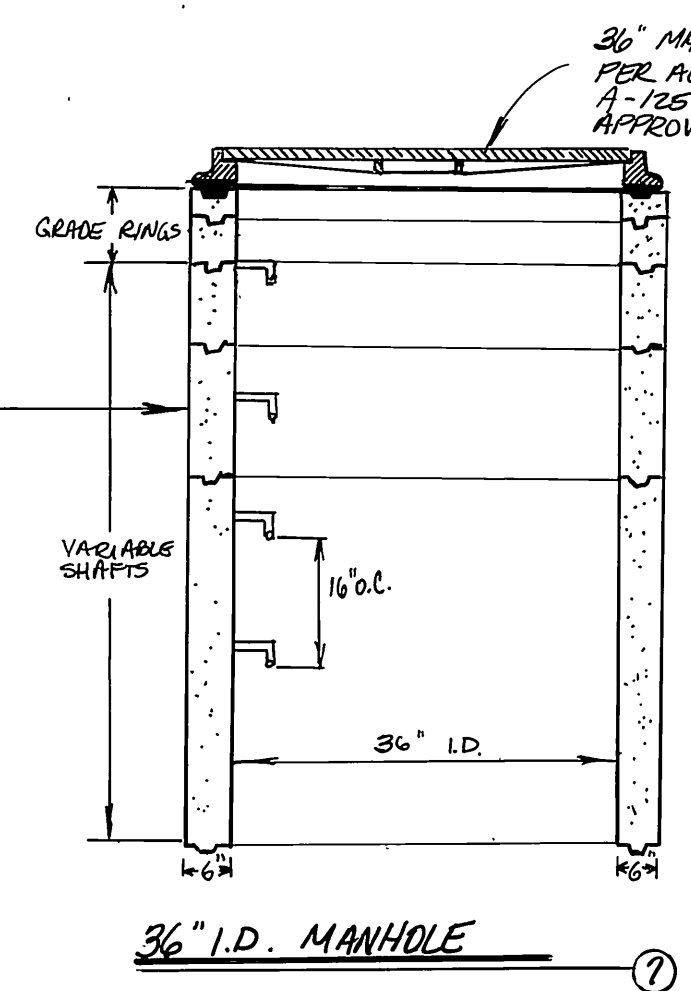
INDEX MAP
SCALE: 1"=100'

CONSTRUCTION NOTES

- ① CONSTRUCT 8" V.C.P. SEWER. 270 L.F.
- ② CONSTRUCT 4" V.C.P. LATERAL. 208 L.F.
- ③ CONSTRUCT MANHOLE PER STD. 500. 1 EA.
- ④ CONSTRUCT CLEANOUT PER STD. 560. 2 EA.
- ⑤ CONSTRUCT STUB & PLUG PER NOTE 2, STD 560. 1 EA.
- ⑥ CONSTRUCT 8" DUCTILE IRON PIPE (D.I.P.) SEWER. 1452 L.F.
- ⑦ CONSTRUCT FLAT-TOP 36" I.D. PRECAST CONCRETE MANHOLE PER ASSOCIATED CONCRETE PRODUCTS OR EQUAL. USE 36" MANHOLE COVER PER DETAIL HEREON. 4 EA.
- ⑧ CONSTRUCT 4" DUCTILE IRON PIPE (D.I.P.) SEWER LATERAL. NO JOINTS IN WATER LINE 9' EA. SIDE OF WATER MAIN. 1347 L.F.

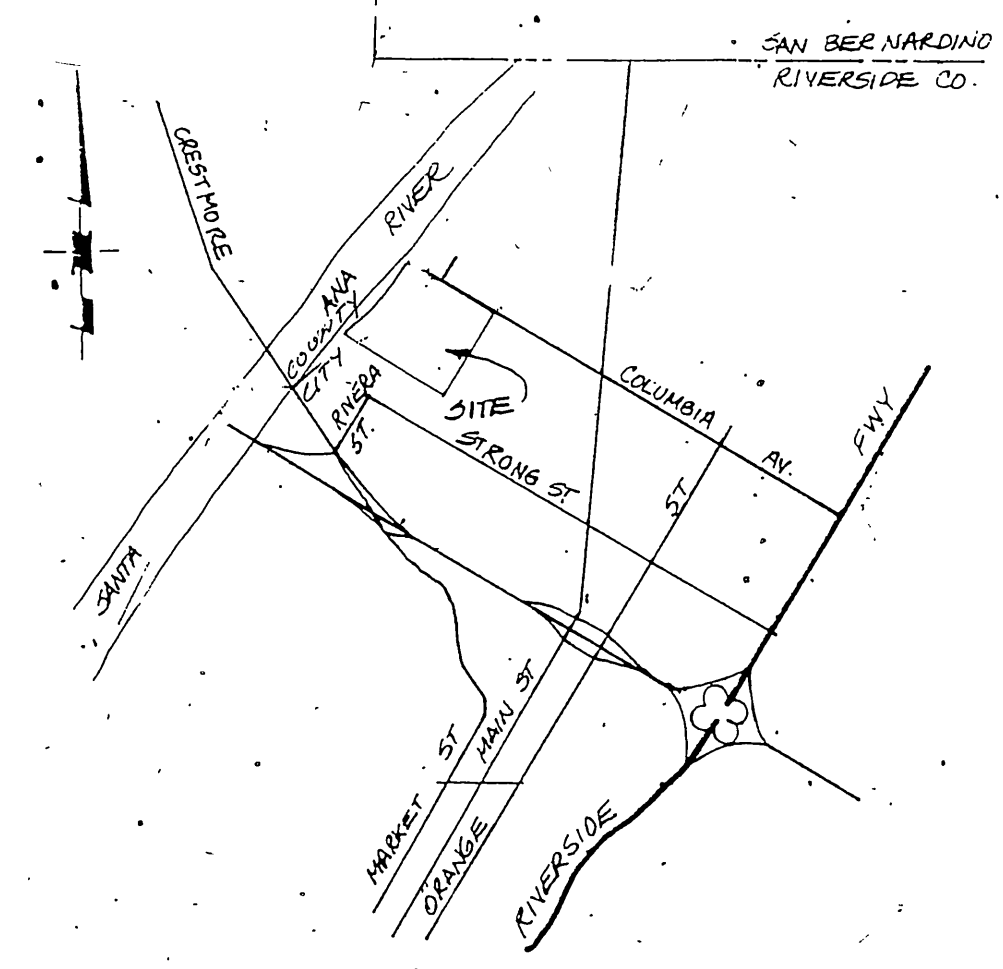
270 L.F.
208 L.F.
1 EA.
2 EA.
1 EA.
1452 L.F.
4 EA.
1347 L.F.

36" I.D. PRECAST CONCRETE MANHOLE PER ASSOCIATED CONCRETE PRODUCTS OR EQUAL.



36" MANHOLE FRAME AND COVER PER ALL AMERICAN FOUNDRY A-1250 OR EQUAL AS APPROVED BY CITY.

- SEWER NOTES**
1. It shall be the responsibility of the contractor to clear the right of way in accordance with the provisions of law as it affects each utility including irrigation lines and appurtenances and at no cost to the City.
 2. Construction shall be in accordance with the City of Riverside Department of Public Works, standard drawings, STANDARD DRAWING NO. 10 and the standard specifications for Public Works construction, (CURRENT Edition).
 3. Location of laterals to be determined in the field at the direction of the owner. Avoid conflict with the proposed and/or existing facilities.
 4. Contractor is to verify existing sewer elevation prior to construction.
 5. No finished floor elevation shall be less than 4' above the sewer flow line at point of connection without having a proper backwater valve installed in the lateral.
 6. Quantities shown are for information only and the City of Riverside is not responsible for their accuracy.
 7. All flagged elevations shall be staked in the field by the private engineer.
 8. The sewer contractor shall adjust manholes to final grade after paving is completed.
 9. A plug shall be installed and remain in place where the new sewer connects with the existing sewer until the sewer is accepted by the City.
 10. The private engineer signing these plans is responsible for assuring the accuracy and acceptability of the work hereon. In the event of discrepancies arising during construction, the private engineer shall be responsible for determining an acceptable solution and revising the plans for approval by the City.
 11. The contractor shall call in a location request to Underground Service Alert (USA), Phone No. (1-800-422-4133), two working days before digging, no construction permit will be issued by the Public Works Department involving excavation for underground facilities unless the applicant has been provided an inquiry identification number by USA.
 12. The developer shall be responsible for preserving or re-establishing and referencing survey monuments destroyed, disturbed, or buried as a result of construction shown hereon.
 13. All stubs and laterals to be constructed in accordance with standard drawing 562.
 14. Laterals are to be 4" V.C.P. and extended to the property line.



VICINITY MAP (nts)



SPECIAL NOTE REGARDING EXISTING UTILITIES

THE EXISTENCE AND LOCATION OF ANY UNDERGROUND UTILITY PIPES OR STRUCTURES SHOWN ON THESE PLANS ARE OBTAINED BY A SEARCH OF THE AVAILABLE RECORDS. TO THE BEST OF OUR KNOWLEDGE THERE ARE NO EXISTING UTILITIES EXCEPT AS SHOWN ON THESE PLANS. THE CONTRACTOR IS REQUIRED TO TAKE DUE PRECAUTIONARY MEASURES TO PROTECT THE UTILITY LINES SHOWN AND ANY OTHER LINES NOT OF RECORD OR NOT SHOWN ON THESE PLANS.

SPECIAL NOTE FROM PRIVATE ENGINEER TO CONTRACTOR

CONTRACTOR AGREES THAT HE SHALL ASSUME SOLE AND COMPLETE RESPONSIBILITY FOR JOB SITE CONDITIONS DURING THE COURSE OF CONSTRUCTION OF THIS PROJECT, INCLUDING SAFETY OF ALL PERSONS AND PROPERTY THAT THIS REQUIREMENT SHALL APPLY CONTINUOUSLY AND NOT BE LIMITED TO NORMAL WORKING HOURS; AND THAT THE CONTRACTOR WILL DEFEND, INDEMNIFY AND HOLD THE OWNER AND THE ENGINEER HARMLESS FROM ANY AND ALL LIABILITY, REAL OR ALLEGED, IN CONNECTION WITH THE PERFORMANCE OF WORK ON THIS PROJECT, EXCEPTING FOR LIABILITY, ARISING FROM THE SOLE NEGLIGENCE OF THE OWNER OR THE ENGINEER.

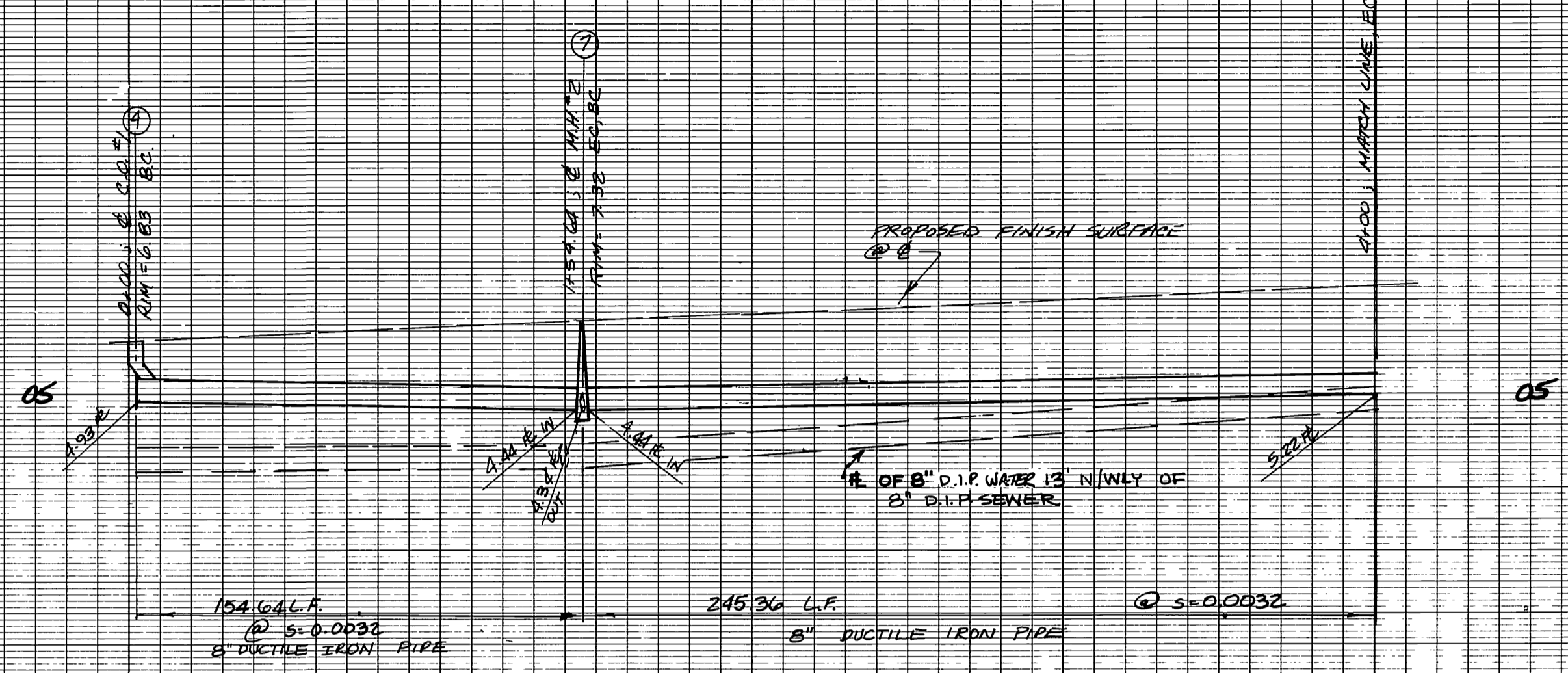
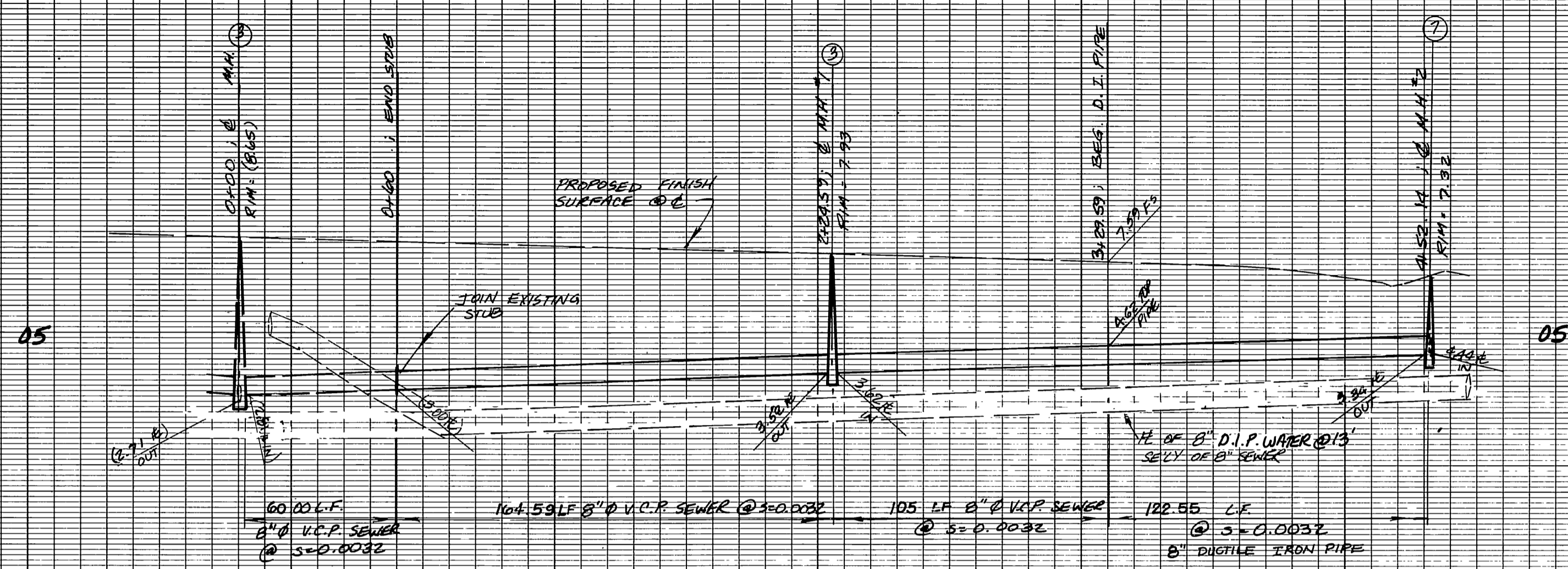
JDR CORPORATION
1921 E. SAMSON AVE. COLTON, CA 91719 (916) 872-6590
Dennis C. Farnsworth
2-29-89
DENNIS FARNSWORTH P.E. 31653

MARK	REVISIONS	APPR. DATE
DESIGNED BY: KJR	DRAWN BY: KJR	CHECKED BY: MIE

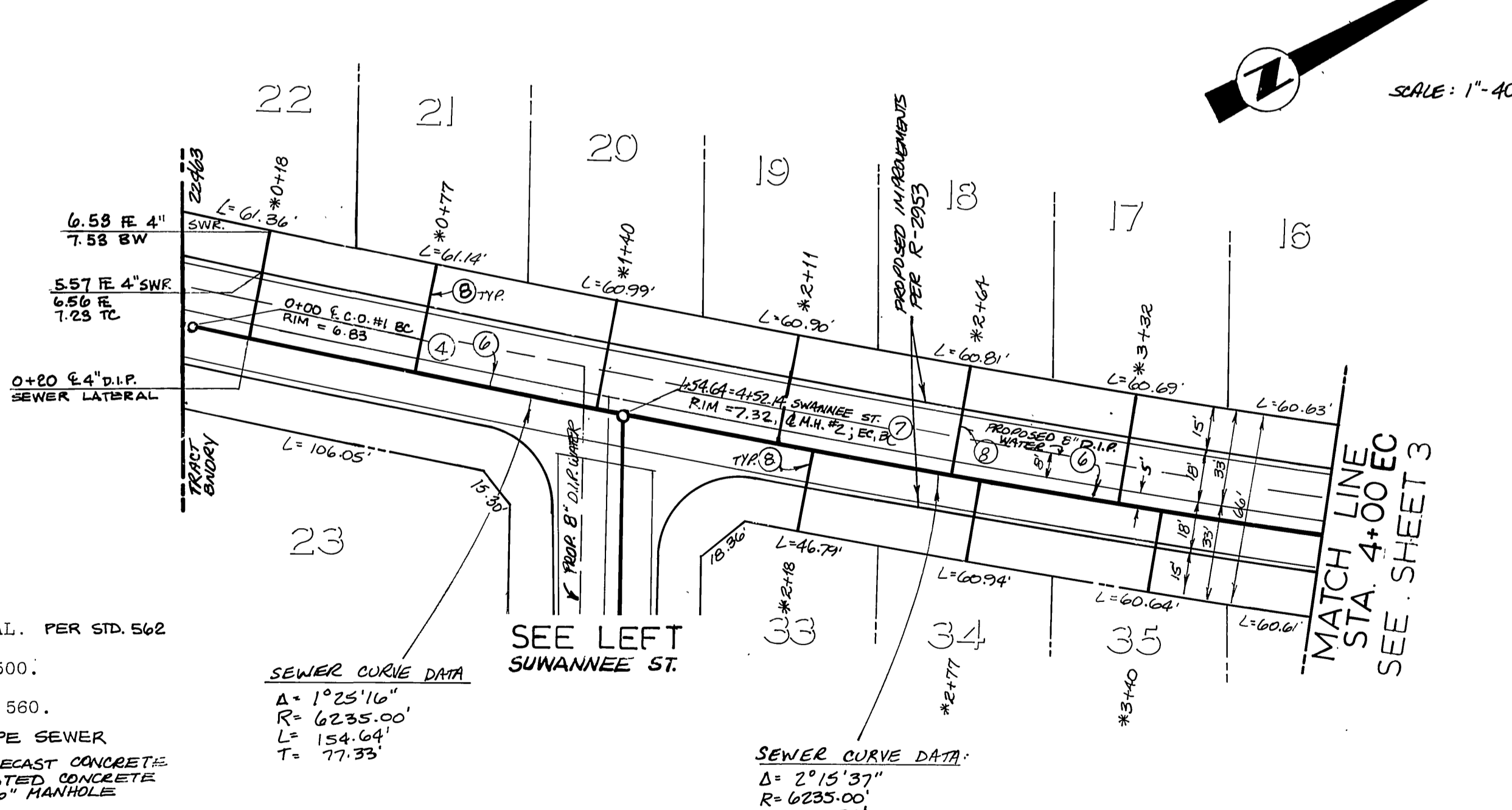
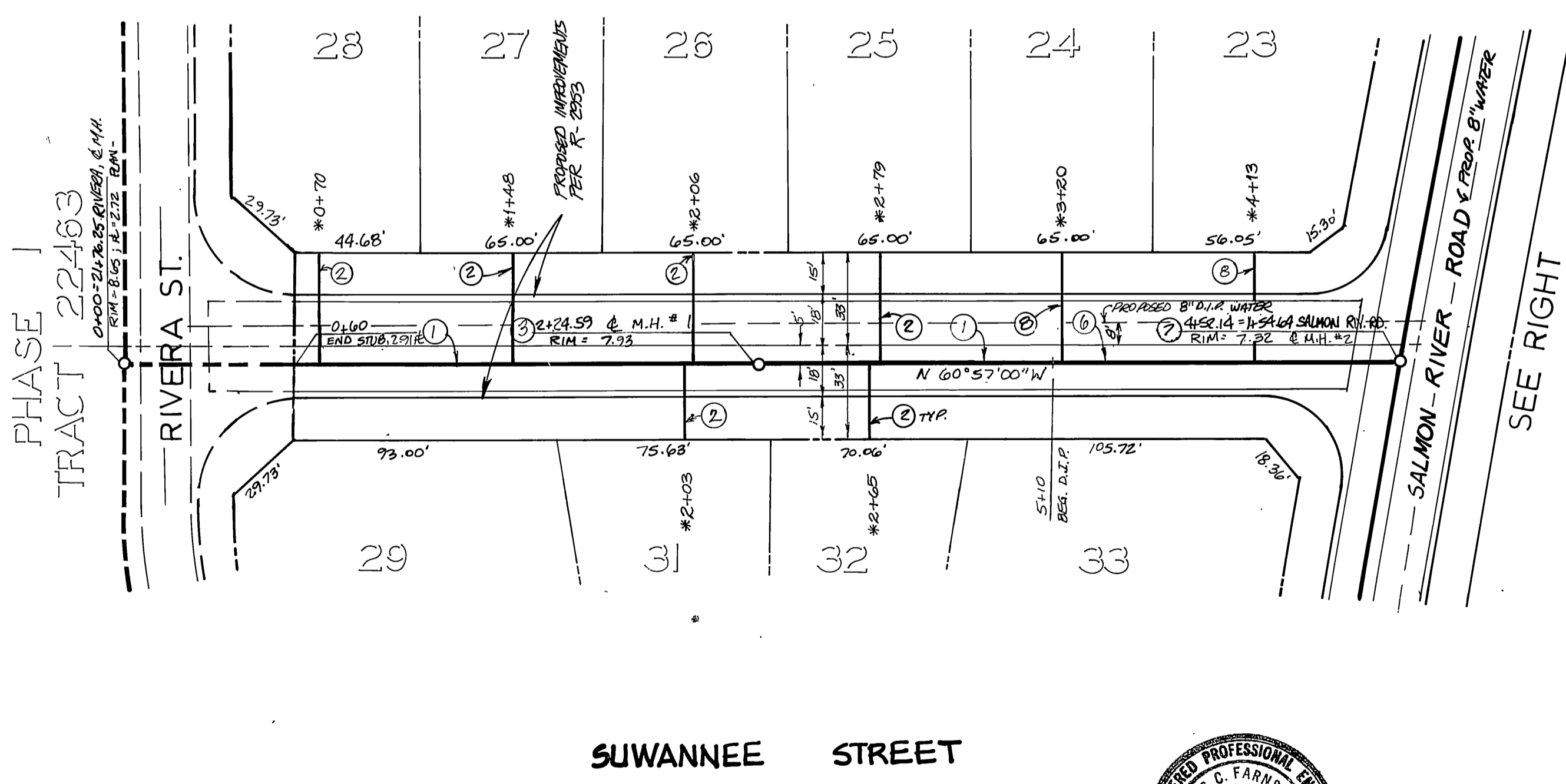
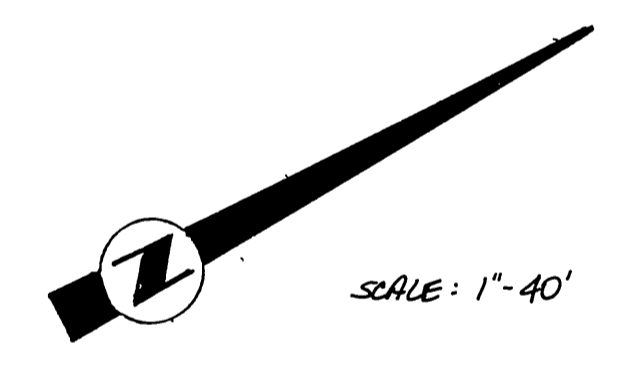
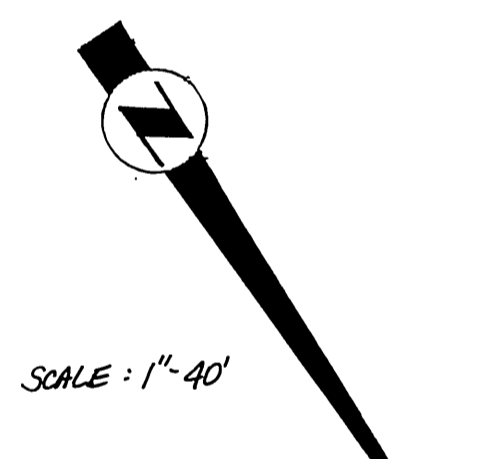
BENCH MARK
DESCRIPTION: CITY OF RIVERSIDE NO. J7-K PER P.B. 847/16. PK NAIL AND TAG IN EAST CURB OF MAIN STREET 18' + SOUTH OF BCR AT COLUMBIA AVENUE. ELEV.: 813.23

CITY OF RIVERSIDE PUBLIC WORKS DEPARTMENT			
APPROVED BY	DATE	BY	APPROVED BY
PARK DEPARTMENT	3-7-89	[Signature]	PUBLIC WORKS DIRECTOR
TRAFFIC DIVISION			
CHIEF P.W. ENGINEER	3-30-89	[Signature]	DATE 3/31/89

TRACT 22463
SEWER IMPROVEMENT PLANS
SHEET 1 OF 3
HORIZ. SCALE: VERT. SCALE:
INDEXED 4-11-89 4/1



SCALES:
HORZ. 1" = 40'
VERT. 1" = 4'



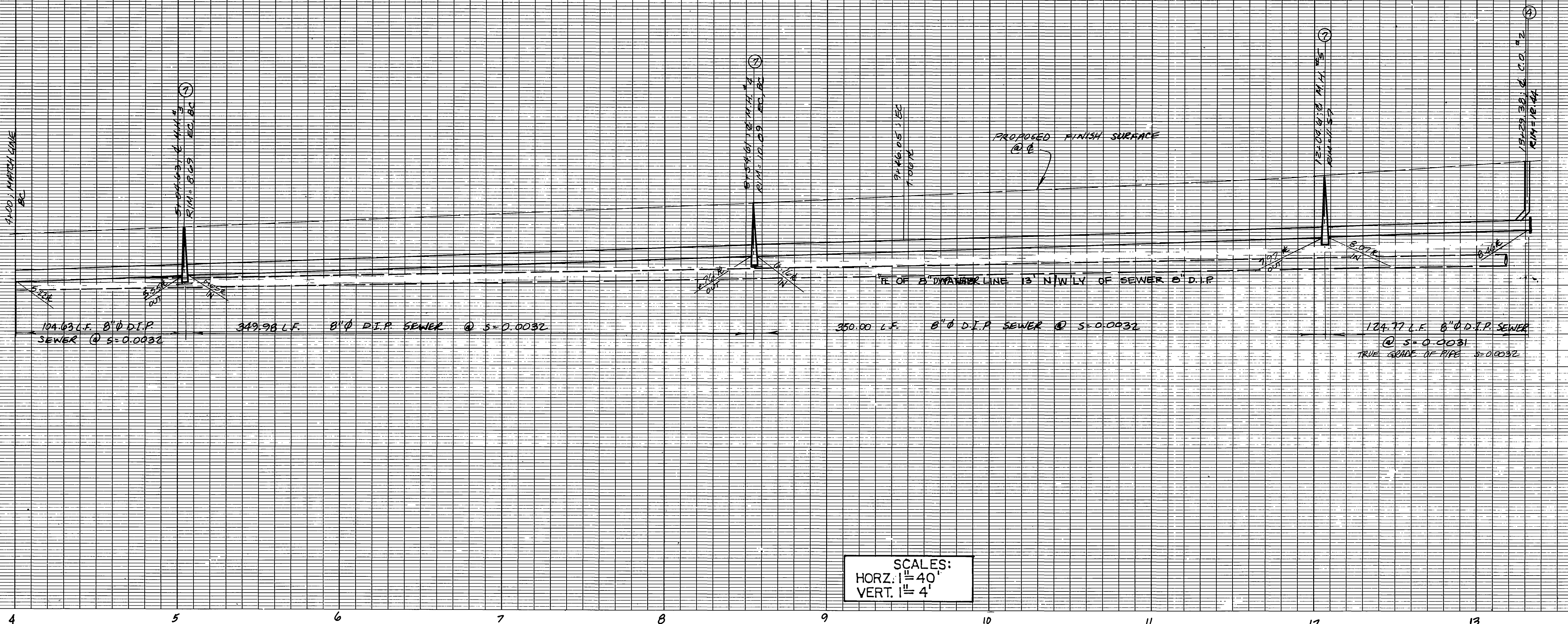
- CONSTRUCTION NOTES
- (1) CONSTRUCT 8" V.C.P. SEWER.
 - (2) CONSTRUCT 4" V.C.P. LATERAL. PER STD. 562
 - (3) CONSTRUCT MANHOLE PER STD. 500.
 - (4) CONSTRUCT CLEANOUT PER STD. 560.
 - (5) CONSTRUCT 8" DUCTILE IRON PIPE SEWER
 - (6) CONSTRUCT FLAT-TOP 36" I.D. PRECAST CONCRETE MANHOLE PER ASSOCIATED CONCRETE PRODUCTS OR EQUAL - USE 36" MANHOLE COVER PER DETAIL SHEET 1.
 - (7) CONSTRUCT 4" DUCTILE IRON PIPE (D.I.P.) SEWER LATERAL. NO JOINTS IN WATER LINE 9' EA. SIDE OF WATER MAIN CROSSING



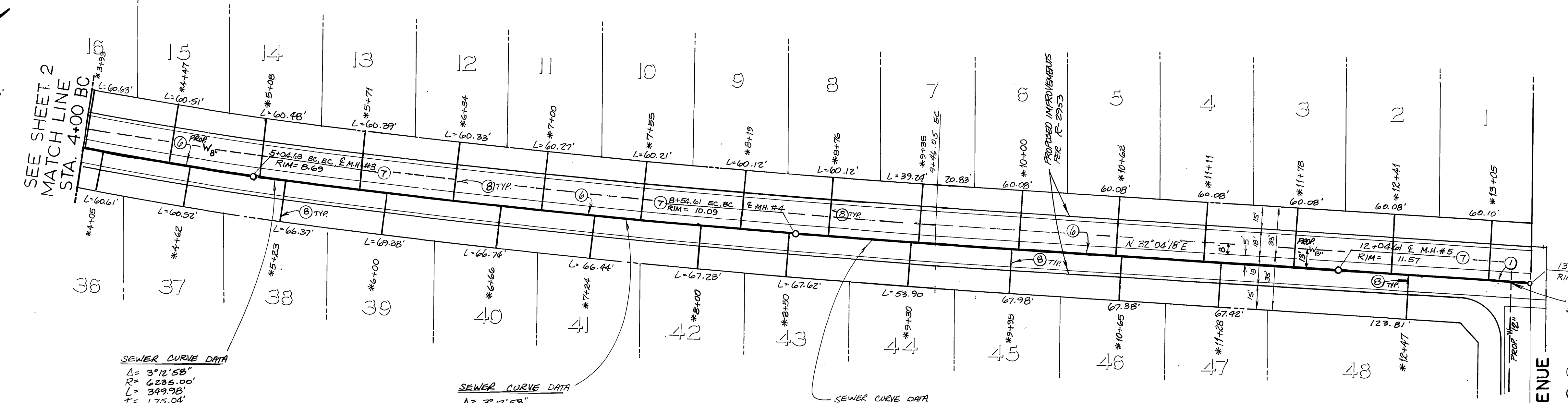
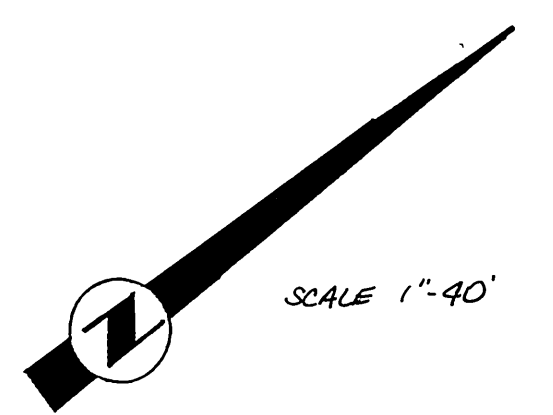
<p>CITY OF RIVERSIDE WATER DEPARTMENT</p> <p>APPROVED: <i>Carl W. ...</i> DATE: 2-29-88</p>	<p>JDR CORPORATION</p> <p>1921 E. SAMPTON AVE. COSTA MESA, CA 92626 (414) 272-6280</p> <p>DESIGNED BY: <i>Dennis C. Farnsworth</i> DATE: 2-29-88</p>	<p>BENCH MARK</p> <p>DESCRIPTION: CITY OF RIVERSIDE NO. J7-K PER F.B. 847/16. PK NAIL AND TAG IN EAST CURB OF MAIN STREET 18' + SOUTH OF BCR AT COLUMBIA AVENUE. ELEV.: 813.23</p>	<p>CITY OF RIVERSIDE PUBLIC WORKS DEPARTMENT</p> <p>APPROVED BY: <i>Dennis C. Farnsworth</i> DATE: 3/31/89</p>	<p>TRACT 22463 SEWER IMPROVEMENT PLANS SUWANNEE STREET SALMON RIVER ROAD</p>	<p>S-1500</p> <p>SHEET 2 OF 3</p>
<p>HORIZ SCALE 1" = 40' VERT SCALE 1" = 4'</p>		<p>INDEXED 4-11-89 LFT</p>			

PRINTED IN U.S.A. KEDDLE & EBERLE CO. 1/4" X 50' TO THE INCH

PRINTED IN U.S.A. KEDDLE & EBERLE CO. 1/4" X 50' TO THE INCH



SCALES:
 HORIZ. 1" = 40'
 VERT. 1" = 4'



SEWER CURVE DATA
 $\Delta = 3^{\circ}12'58''$
 $R = 6235.00'$
 $L = 349.98'$
 $T = 175.04'$

SEWER CURVE DATA
 $\Delta = 3^{\circ}12'58''$
 $R = 6235.00'$
 $L = 349.98'$
 $T = 175.04'$

SEWER CURVE DATA
 $\Delta = 0^{\circ}50'25''$
 $R = 6235.00'$
 $L = 91.44'$
 $T = 45.72'$



- CONSTRUCTION NOTES
- ① CONSTRUCT 8" V.C.P. SEWER.
 - ② CONSTRUCT 4" V.C.P. SEWER LATERAL.
 - ③ CONSTRUCT MANHOLE PER STD. 500.
 - ④ CONSTRUCT CLEANOUT PER STD. 560.
 - ⑤ CONSTRUCT 8" STUB AND PLUG PER NOTE 2, STD. 560.
 - ⑥ CONSTRUCT 8" DUCTILE IRON PIPE SEWER.
 - ⑦ CONSTRUCT 36" I.D. PRECAST CONCRETE MANHOLE PER ASSOCIATED CONCRETE PRODUCTS OR EQUAL. USE 36" MANHOLE COVER. PER DETAIL SHEET 1.
 - ⑧ CONSTRUCT 4" DUCTILE IRON PIPE (D.I.P.) SEWER LATERAL, NO JOINTS IN WATER LINE 9' EA. SIDE OF WATER CROSSING.

CITY OF RIVERSIDE WATER DEPARTMENT APPROVED: <i>Carl Wengert</i> 5/25/89 DATE: 2-29-89	JOR CORPORATION 1921 E. SANBORN AVE. CORONA, CA 92719 (714) 272-6580 DENNIS C. FARNSWORTH REGISTERED PROFESSIONAL ENGINEER No. 31653 CIVIL STATE OF CALIFORNIA	BENCH MARK DESCRIPTION: CITY OF RIVERSIDE NO. J7-K PER F.B. 847/16. PK NAIL AND TAG IN EAST CURB OF MAIN STREET 18' + SOUTH OF BCR AT COLUMBIA AVENUE. ELEV: 813.23	CITY OF RIVERSIDE PUBLIC WORKS DEPARTMENT APPROVED BY: <i>[Signature]</i> DATE: 3/1/89 TRAFFIC DIVISION CHIEF P.W. ENGINEER: 3/30/89	TRACT 22463 SEWER IMPROVEMENT PLANS SALMON RIVER ROAD DATE: 3/31/89	S-1500 SHEET 3 OF 3 HORIZ. SCALE 1"=40' VERT. SCALE 1"=4' INDEXED 4-11-89
---	--	--	---	---	--