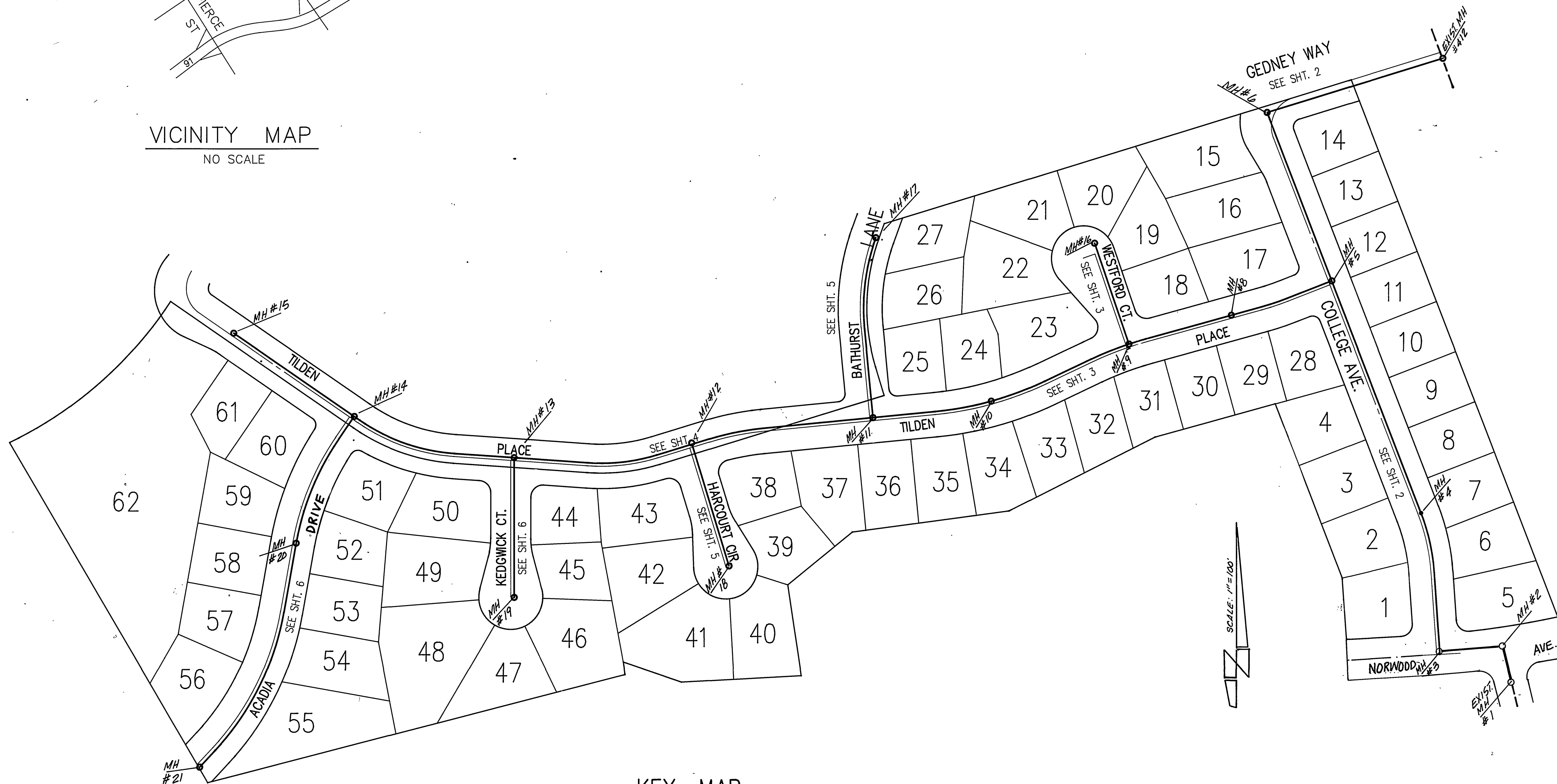


VICINITY MAP  
NO SCALE

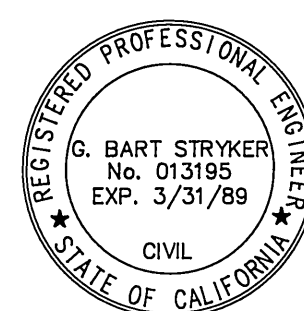


KEY MAP

SCALE: 1" = 100'

GENERAL NOTES

1. The private engineer signing these plans is responsible for the accuracy and acceptability of the work hereon. In the event of discrepancies arising during construction the private engineer signing the plans shall be responsible for determining an acceptable solution and revising the plans for approval by the city.
2. It shall be the responsibility of the contractor to clear the right-of-way in accordance with the provisions of law as it affects each utility including irrigation lines and appurtenances and at no cost to the city.
3. Construction shall be in accordance with the City of Riverside Department of Public Works, Standard Drawings, Standard Drawing No. 10 and the Standard Specifications for Public Works Construction, current edition.
4. Location of laterals to be determined in the field at the direction of the owner. Avoid conflict with proposed and/or existing facilities.
5. Contractor is to verify existing sewer elevation prior to construction.
6. The sewer contractor shall adjust manholes to final grade after paving is completed.
7. No finished floor elevation shall be less than 4' above the sewer flow line at the point of connection without having a proper backwater valve installed in the lateral.
8. A plug shall be installed and will remain in place where the new sewer connects with the existing sewer until the new sewer is accepted by the City of Riverside.
9. All manholes to be Riverside City Std. No. 500.
10. All flagged elevations shall be staked in the field by private engineer.
11. The contractor shall call in a location request to UNDERGROUND SERVICE ALERT (USA), Phone No. 1-800-422-4133, two working days before digging. No construction permit will be issued by the Public Works Department involving excavation for underground facilities unless the applicant has been provided an Inquiry Identification Number by U.S.A.
12. The Developer shall be responsible for the preserving or re-establishing and referencing survey monuments destroyed, disturbed or buried as a result of construction shown hereon.



BENCHMARK:  
BRASS DISK IN 12" CONC. MON. S.W. COR OF GRAMERCY & SIERRA VISTA ON BACK OF CURB AT THE N.W. END OF SIDEWALK PLANTER.  
CITY B.M. F1-A ELEV. = 806.587

**STRYKER ENGINEERING**  
CIVIL ENGINEERING & PLANNING  
1522 E. FOURTH STREET, SUITE 206  
SANTA ANA, CA 92701  
PH. (714) 954-0433  
*G. Bart Stryker* 12/1/87  
G. BART STRYKER R.C.E. 13195 (EXP. 3/31/89) DATE

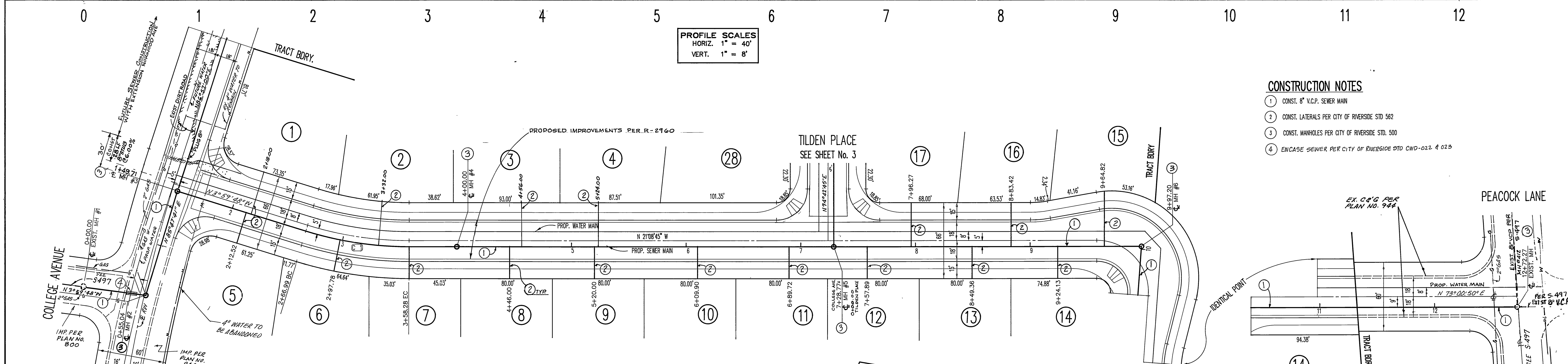
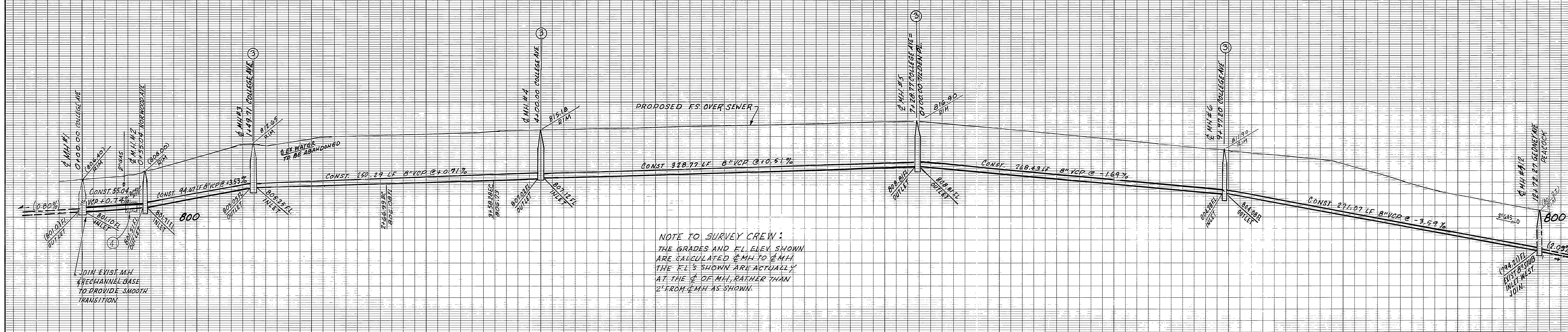
MARK	REVISIONS	APPR.	DATE

DESIGNED BY *IS/OS* DRAWN BY *IS/OS* CHECKED BY *IS/OS*

CITY OF RIVERSIDE PUBLIC WORKS DEPARTMENT			
APPROVED BY	DATE	BY	APPROVED BY
PRINCIPAL ENGINEER	7-16-87	<i>[Signature]</i>	Barry Bed
PARK DEPARTMENT			PUBLIC WORKS DIRECTOR
TRAFFIC DIVISION			
CHIEF P.W. ENGINEER	9/29/88		DATE 9/20/88

TITLE SHEET  
SEWER IMPROVEMENT PLANS  
TRACT No. 22641  
HORIZ. SCALE: 1" =      VERT. SCALE: 1" =      INDEXED 11-23-88

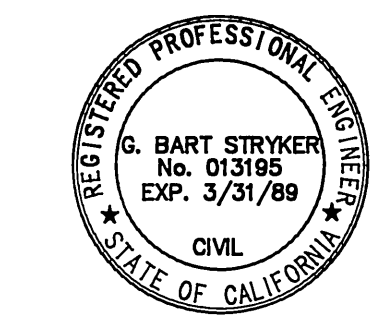
ACCOUNT NO.  
S-1505  
SHEET 1 OF 6



- CONSTRUCTION NOTES**
1. CONST. 8" V.C.P. SEWER MAIN
  2. CONST. LATERALS PER CITY OF RIVERSIDE STD 562
  3. CONST. MANHOLES PER CITY OF RIVERSIDE STD. 500
  4. ENCASE SEWER PER CITY OF RIVERSIDE STD CWD-022.4.023

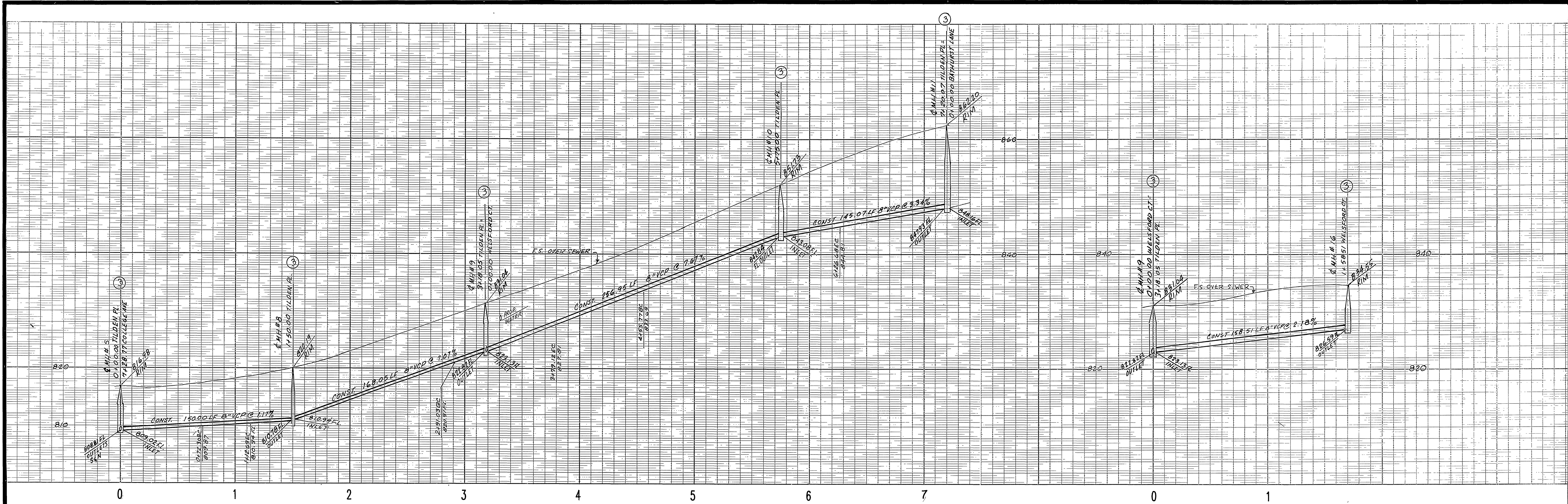
**CURVE DATA**

DELTA	RADIUS	LENGTH	TANGENT
170° 8' 57"	305.00'	91.29'	45.99'



CITY OF RIVERSIDE WATER DEPARTMENT <i>Carl Weingarten</i> DATE 5/25/88	BENCHMARK: BRASS DISK IN 12" CONC. MON. S.W. COR. OF GRAMERCY & SIERRA VISTA ON BACK OF CURB AT THE N.W. END OF SIDEWALK PLANTER. CITY B.M. F1-A ELEV. = 806.587	STRYKER ENGINEERING CIVIL ENGINEERING & PLANNING 1522 E. FOURTH STREET, SUITE 206 SANTA ANA, CA 92701 PH. (714) 954-0433 <i>G. Bart Stryker</i> 12/1/87 G. BART STRYKER, R.C.E. 13195 (EXP. 3/31/89) DATE	<b>CITY OF RIVERSIDE</b> <b>PUBLIC WORKS DEPARTMENT</b>		PLAN & PROFILE SEWER IMPROVEMENT PLANS COLLEGE AVENUE & GEDNEY WAY	ACCOUNT No. S-1505 SHEET 2 OF 6
			APPROVED BY: PRINCIPAL ENGINEER PARK DEPARTMENT TRAFFIC DIVISION CHIEF P.W. ENGINEER DATE 5/19/88	APPROVED BY: <i>Carly Bed</i> PUBLIC WORKS DIRECTOR DATE 5/20/88		



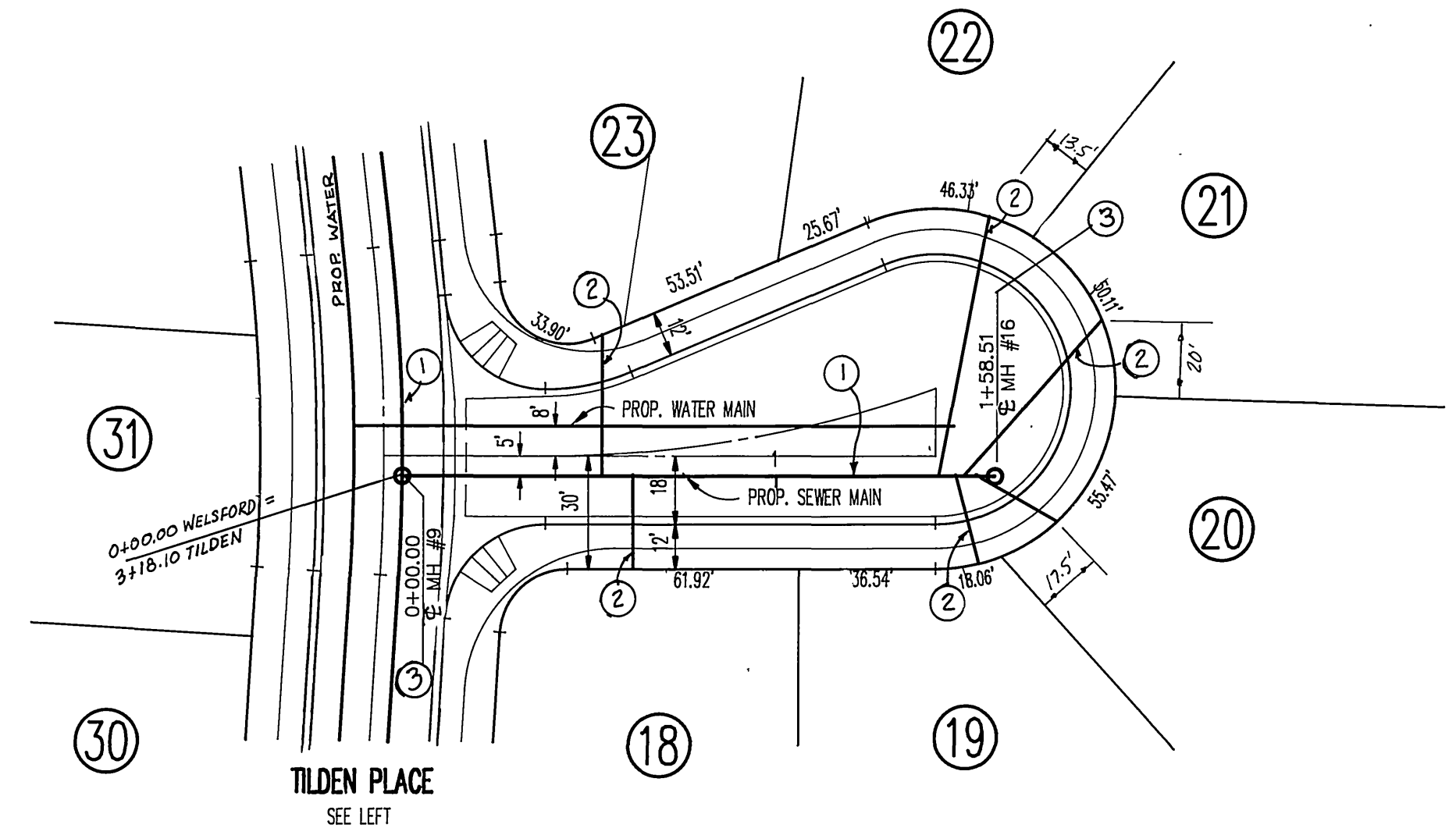
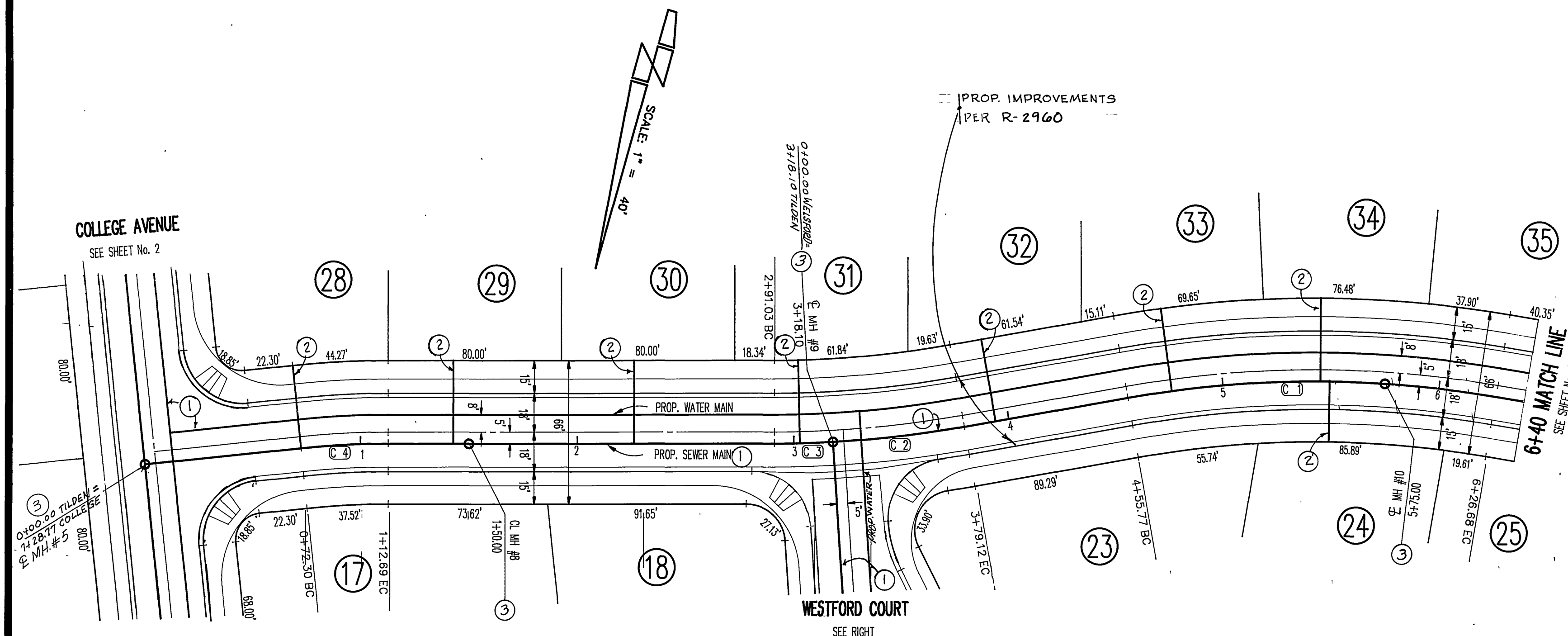


**PROFILE SCALES**  
 HORIZ. 1" = 40'  
 VERT. 1" = 8'

**CONSTRUCTION NOTES**

- 1 CONST. 8" V.C.P. SEWER MAIN
- 2 CONST. LATERALS PER CITY OF RIVERSIDE STD 562
- 3 CONST. MANHOLES PER CITY OF RIVERSIDE STD 500

SCALE: 1" = 40'



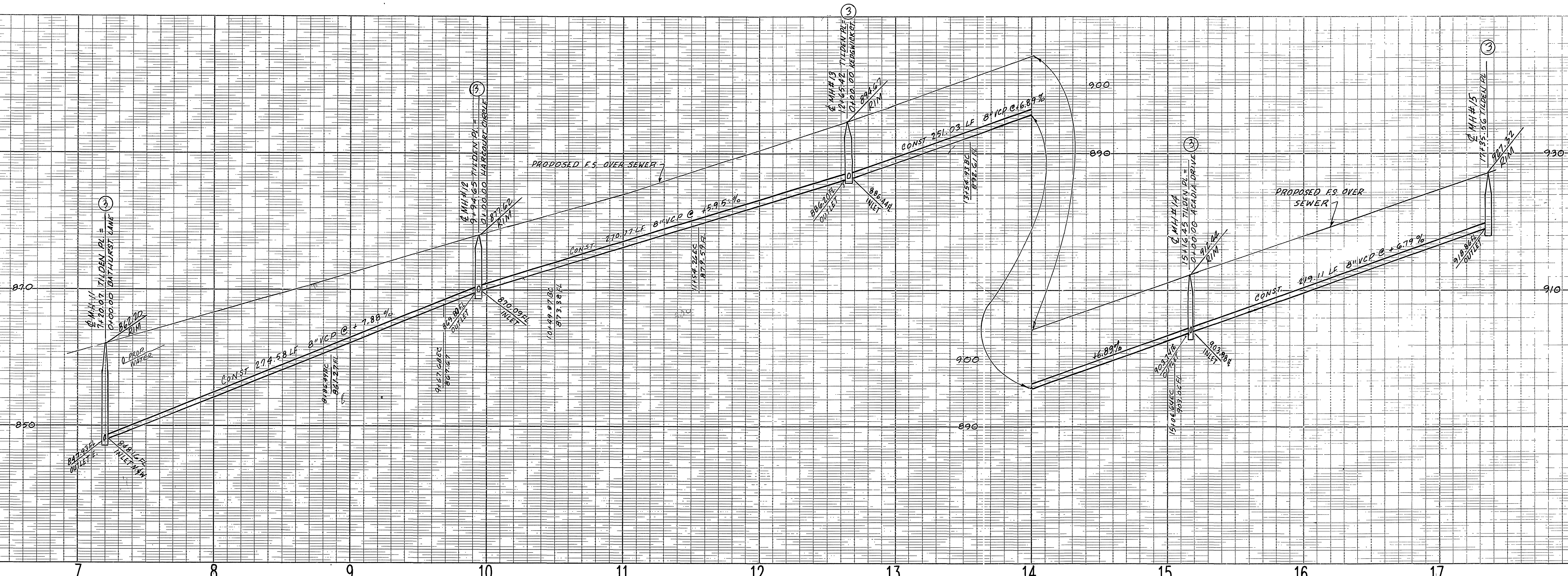
**CURVE DATA**

DELTA	RADIUS	LENGTH	TANGENT
C 1 19°46'55"	495.00'	170.90'	86.31'
C 2 8°55'27"	505.00'	61.03'	30.55'
C 3 3°04'14"	505.00'	27.06'	13.53'
C 4 5°31'30"	395.00'	40.39'	20.21'



CITY OF RIVERSIDE WATER DEPARTMENT <i>Carl Weingarten</i> DATE 5/25/88	BENCHMARK: BRASS DISK IN 12" CONC. MON. S.W. COR. OF GRAMERCY & SIERRA VISTA ON BACK OF CURB AT THE N.W. END OF SIDEWALK PLANTER. CITY B.M. F1-A ELEV. = 808.587	<b>STRYKER ENGINEERING</b> CIVIL ENGINEERING & PLANNING 1522 E. FOURTH STREET, SUITE 206 SANTA ANA, CA 92701 PH. (714) 954-0433 <i>G. Bart Stryker</i> 12-1-87 G. BART STRYKER, R.C.E. 13195 (EXP. 3/31/89)	<b>CITY OF RIVERSIDE</b> <b>PUBLIC WORKS DEPARTMENT</b> APPROVED BY: <i>Barry Paul</i> PARK DEPARTMENT TRAFFIC DIVISION CHIEF P.W. ENGINEER DATE: 9/20/88	PLAN & PROFILE SEWER IMPROVEMENT PLANS <b>TILDEN PLACE</b> <b>WESTFORD COURT</b> HORIZ. SCALE: 1" = 40' VERT. SCALE: 1" = 8'	ACCOUNT NO. <b>S-1505</b> SHEET <b>3</b> OF <b>6</b>
--	---	---	---	--	--



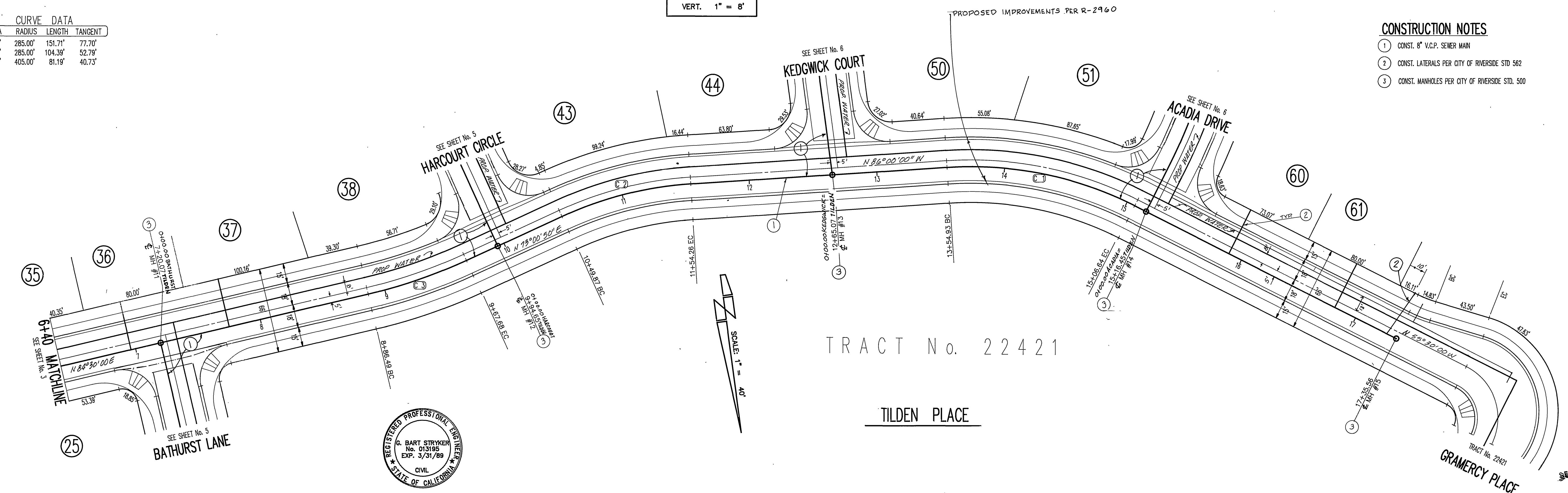


PROFILE SCALES  
 HORIZ. 1" = 40'  
 VERT. 1" = 8'

CURVE DATA

DELTA	RADIUS	LENGTH	TANGENT
30°30'00"	285.00'	151.71'	77.70'
20°58'10"	285.00'	104.39'	52.79'
11°29'10"	405.00'	81.19'	40.73'

- CONSTRUCTION NOTES
1. CONST. 8" V.C.P. SEWER MAIN
  2. CONST. LATERALS PER CITY OF RIVERSIDE STD 562
  3. CONST. MANHOLES PER CITY OF RIVERSIDE STD. 500



CITY OF RIVERSIDE  
 WATER DEPARTMENT  
 Carl Weingarten DATE 5/25/88

BENCHMARK:  
 BRASS DISK IN 12" CONC. MON. S.W. COR.  
 OF GRAMERCY & SIERRA VISTA ON BACK OF  
 CURB AT THE N.W. END OF SIDEWALK  
 PLANTER.  
 CITY B.M. F1-A ELEV. = 806.587

STRYKER ENGINEERING  
 CIVIL ENGINEERING & PLANNING  
 1522 E. FOURTH STREET, SUITE 206  
 SANTA ANA, CA 92701  
 PH. (714) 954-0433  
 G. Bart Stryker 12-1-87  
 G. BART STRYKER, R.C.E. 13195 (EXP. 3/31/89) DATE

MARK	REVISIONS	APPR. DATE
DESIGNED BY	IB/BS	
DRAWN BY	IB/BS	
CHECKED BY	IB/BS	

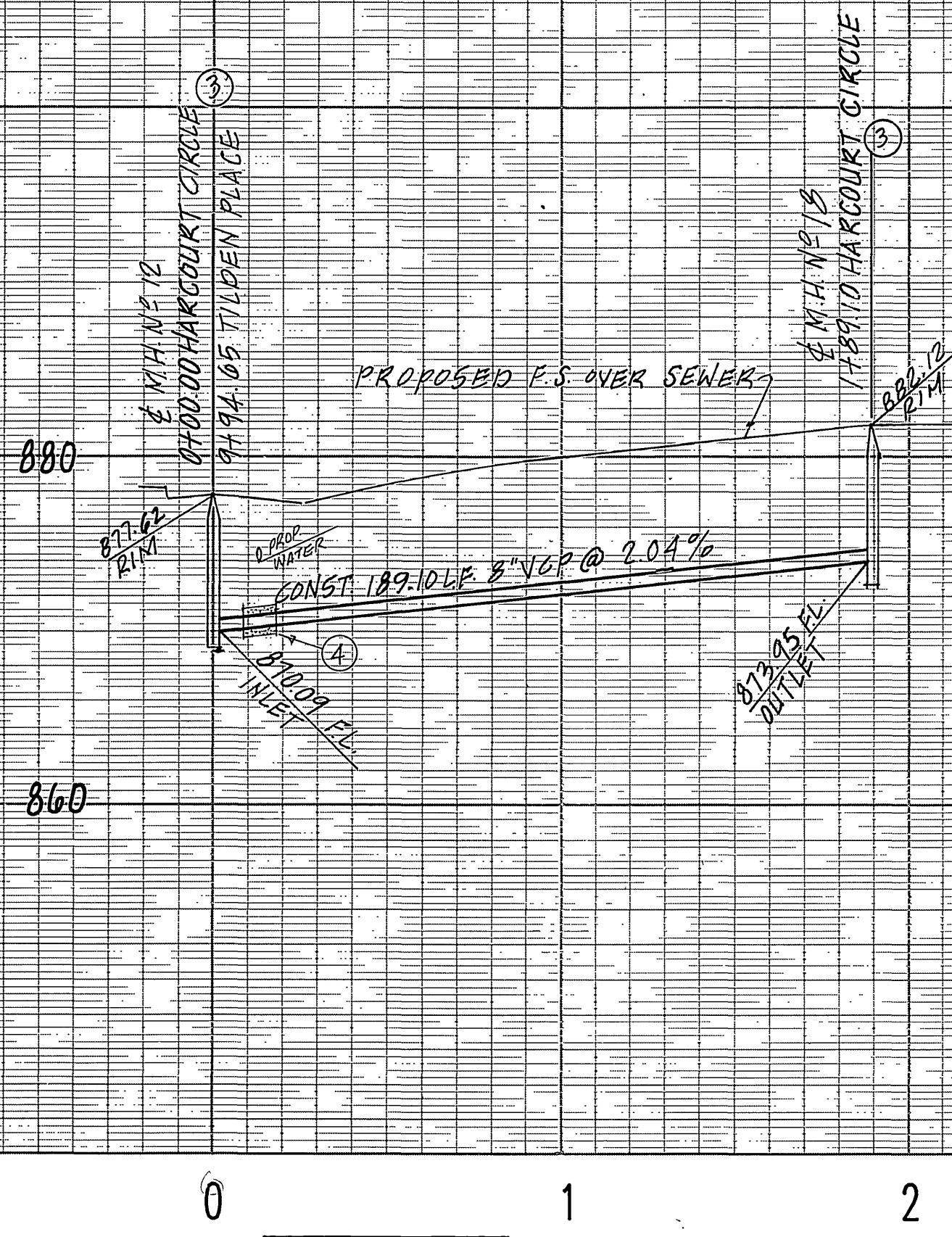
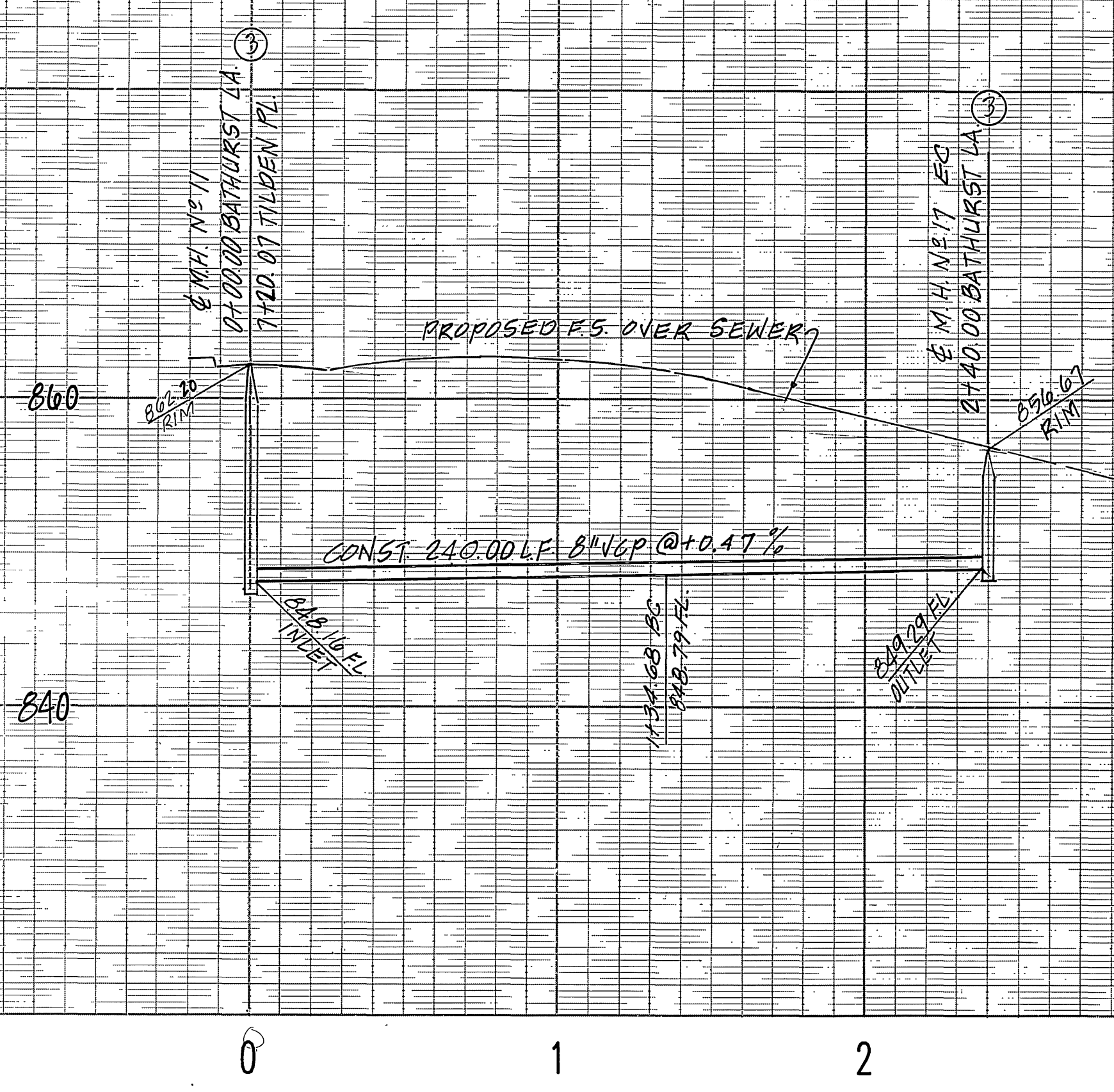
CITY OF RIVERSIDE  
 PUBLIC WORKS DEPARTMENT

APPROVED BY	DATE	BY	APPROVED BY
PRINCIPAL ENGINEER	4-16-88	IB/BS	Benny Red
PARK DEPARTMENT			PUBLIC WORKS DIRECTOR
TRAFFIC DIVISION			
CHIEF P.W. ENGINEER	5-19-88	IB/BS	DATE 9/20/88

PLAN & PROFILE  
 SEWER IMPROVEMENTS PLANS  
 TILDEN PLACE  
 HORIZ. SCALE: 1" = 40' VERT. SCALE: 1" = 8'

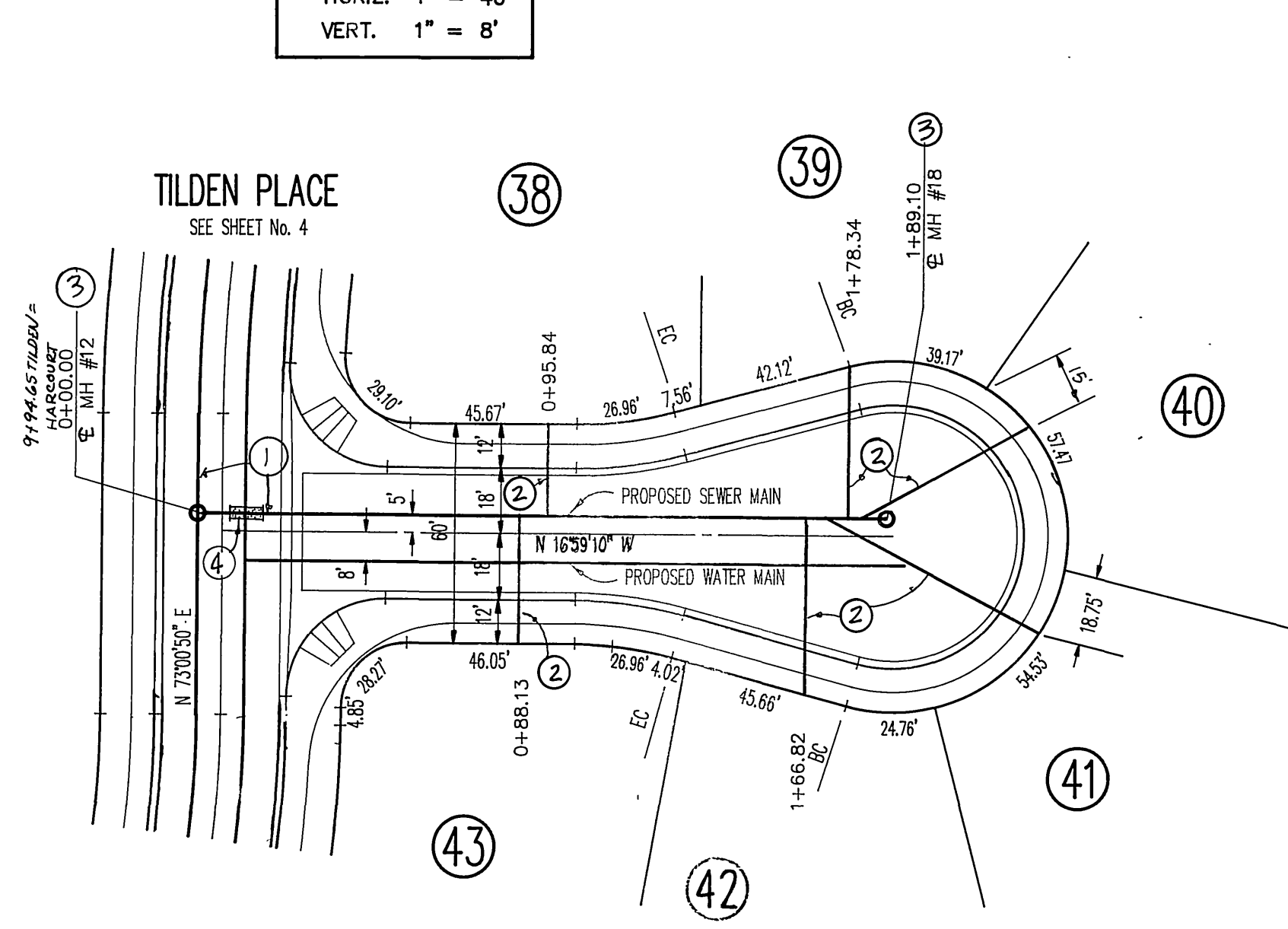
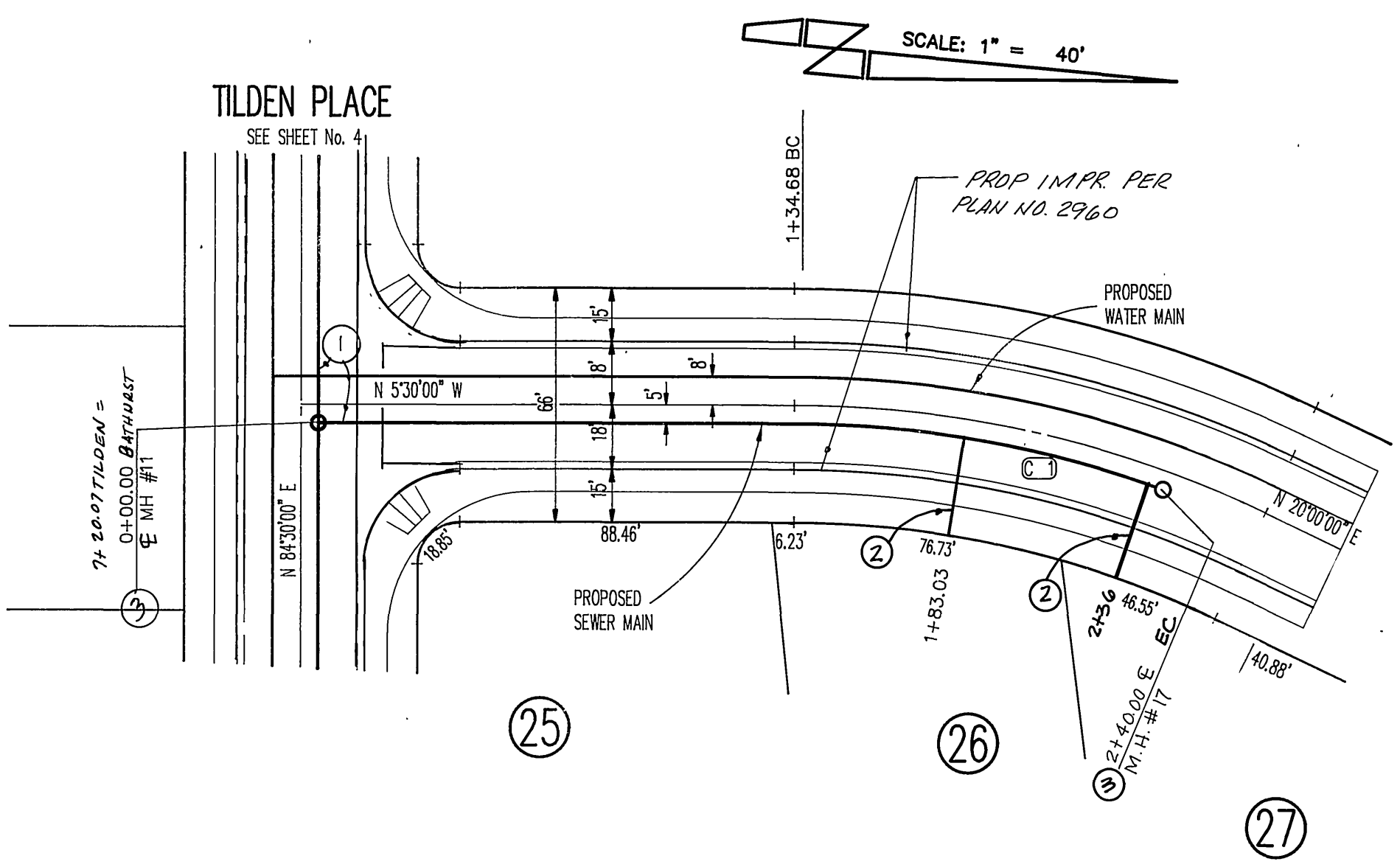
ACCOUNT NO.  
 S-1505  
 SHEET 4 OF 6





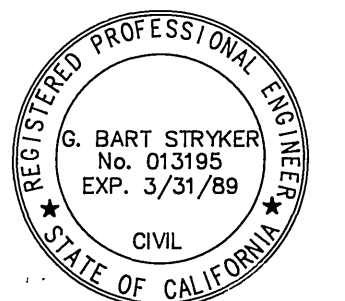
PROFILE SCALES  
 HORIZ. 1" = 40'  
 VERT. 1" = 8'

- CONSTRUCTION NOTES**
- ① CONST. 8" V.C.P. SEWER MAIN
  - ② CONST. LATERALS PER CITY OF RIVERSIDE STD 562
  - ③ CONST. MANHOLES PER CITY OF RIVERSIDE STD. 500
  - ④ ENCASE SEWER PER CITY OF RIVERSIDE STD CWD-022 & 023



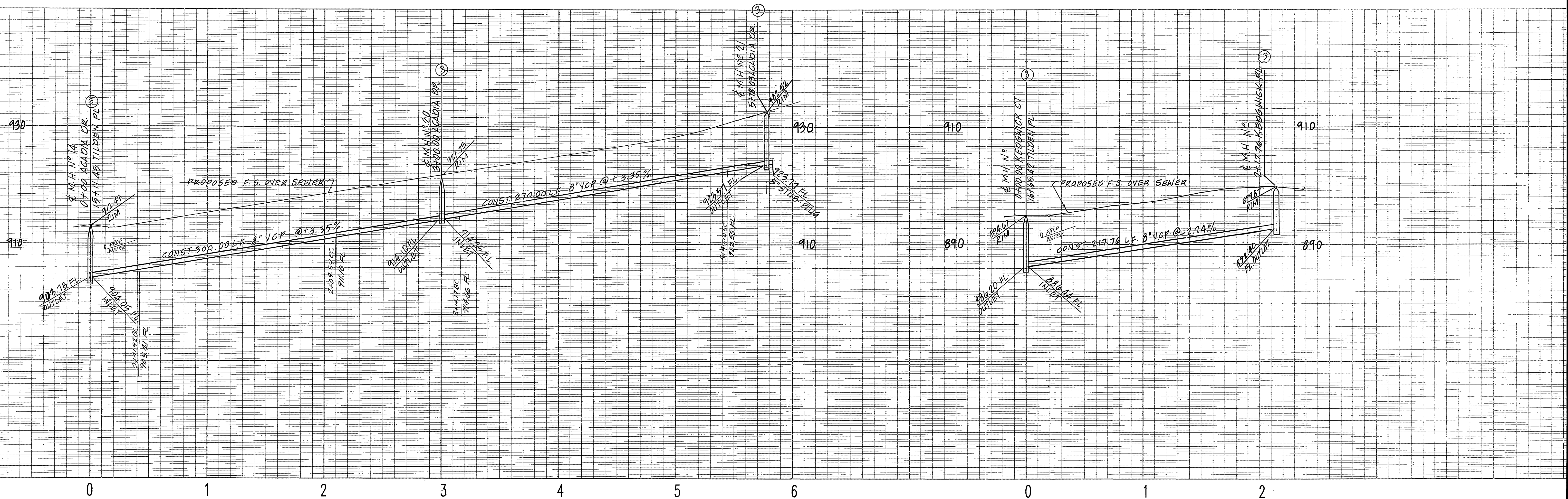
**CURVE DATA**

DELTA	RADIUS	LENGTH	TANGENT
25°30'00"	305.00'	135.74'	69.01'

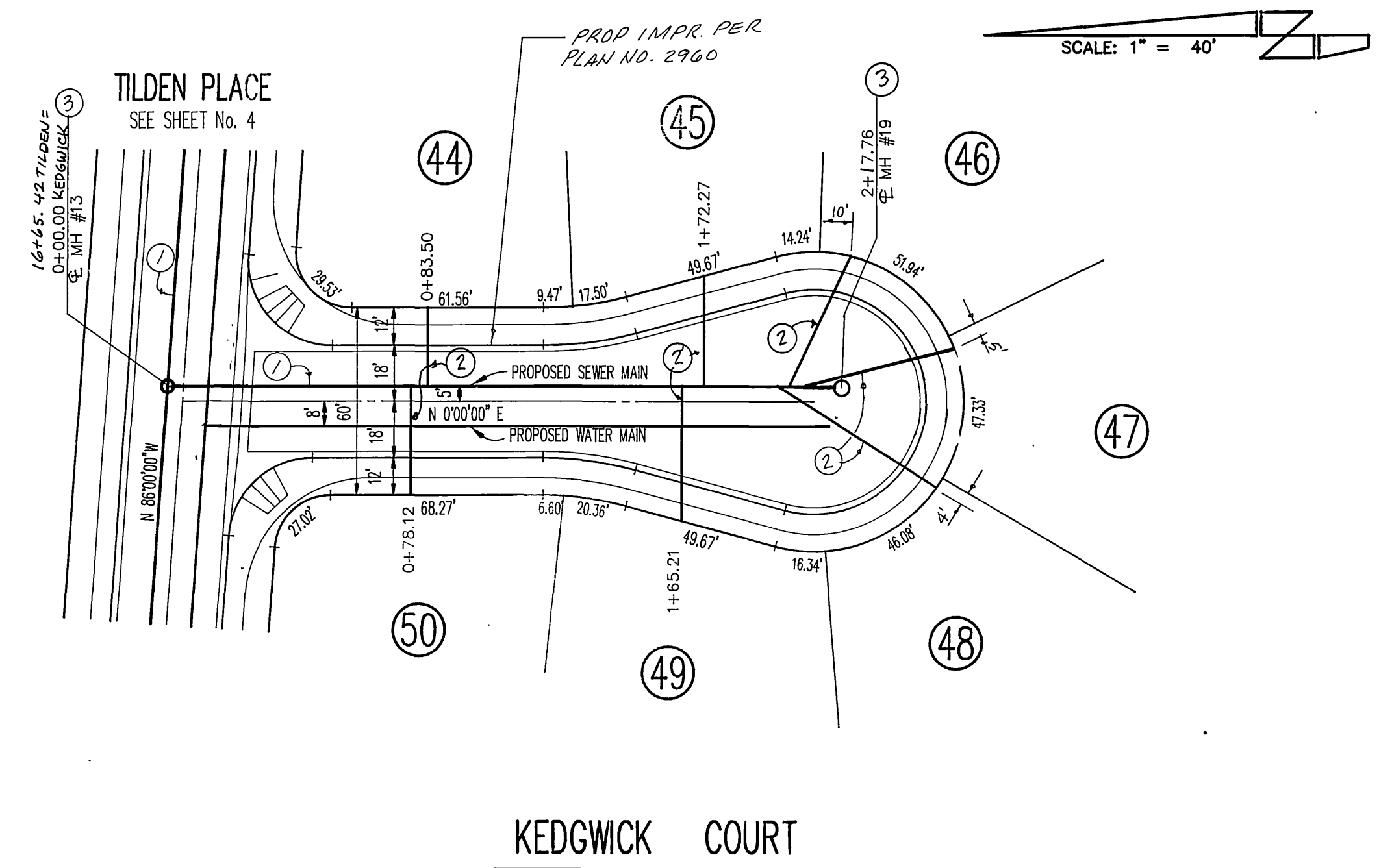
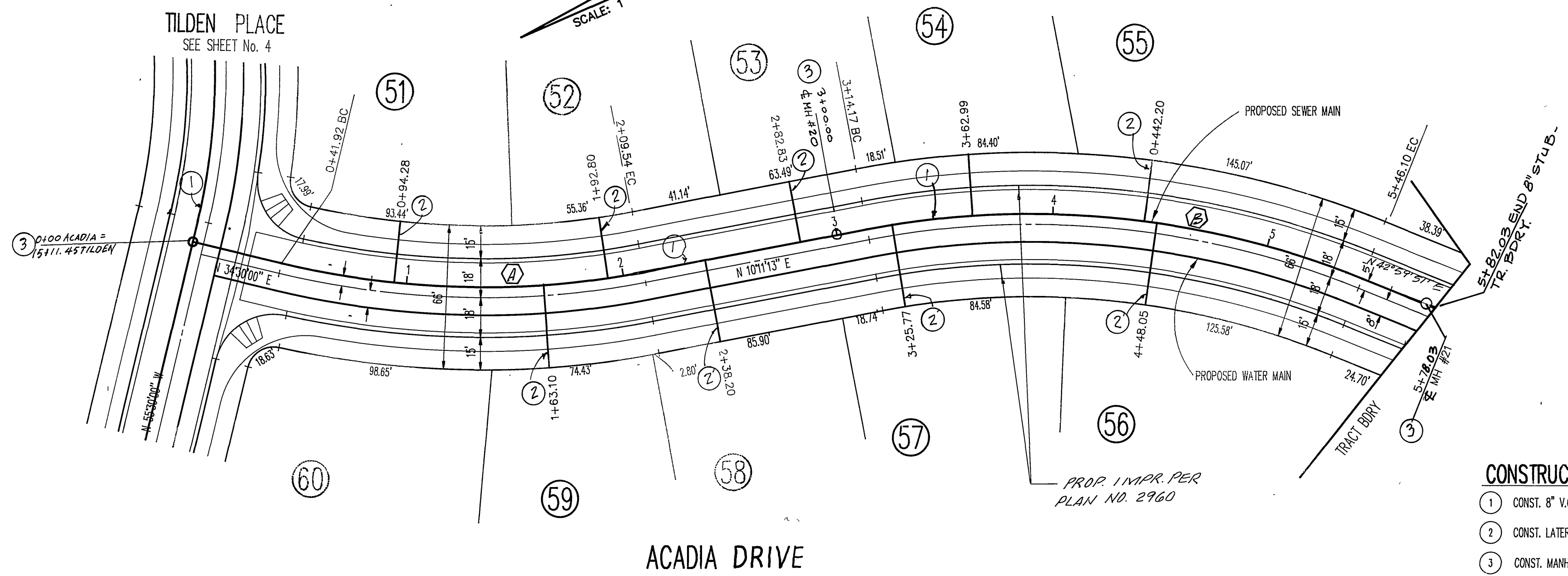


CITY OF RIVERSIDE WATER DEPARTMENT <i>Carl Alving</i> DATE 5/25/88	BENCHMARK: BRASS DISK IN 12" CONC. MON. S.W. COR. OF GRAMERCY & SIERRA VISTA ON BACK OF CURB AT THE N.W. END OF SIDEWALK PLANTER. CITY B.M. F1-A ELEV. = 806.587	<b>STRYKER ENGINEERING</b> CIVIL ENGINEERING & PLANNING 1522 E. FOURTH STREET, SUITE 206 SANTA ANA, CA 92701 PH. (714) 954-0433 <i>G. Bart Stryker</i> 12-1-87 G. BART STRYKER, R.C.E. 13195 (EXP. 3/31/89)	<table border="1" style="width: 100%; border-collapse: collapse;"> <tr> <td colspan="2" style="text-align: center;"><b>CITY OF RIVERSIDE</b></td> <td colspan="2" style="text-align: center;"><b>PUBLIC WORKS DEPARTMENT</b></td> </tr> <tr> <td>APPROVED BY</td> <td>DATE</td> <td>APPROVED BY</td> <td>DATE</td> </tr> <tr> <td>PRINCIPAL ENGINEER</td> <td>7-6-88</td> <td><i>Barry Bell</i></td> <td>9/20/88</td> </tr> <tr> <td>PARK DEPARTMENT</td> <td></td> <td>PUBLIC WORKS DIRECTOR</td> <td></td> </tr> <tr> <td>TRAFFIC DIVISION</td> <td></td> <td>CHIEF P.W. ENGINEER</td> <td>9/19/86</td> </tr> <tr> <td>DESIGNED BY <i>IB/BS</i></td> <td>DRAWN BY <i>IB/BS</i></td> <td>CHECKED BY <i>IB/BS</i></td> <td></td> </tr> </table>	<b>CITY OF RIVERSIDE</b>		<b>PUBLIC WORKS DEPARTMENT</b>		APPROVED BY	DATE	APPROVED BY	DATE	PRINCIPAL ENGINEER	7-6-88	<i>Barry Bell</i>	9/20/88	PARK DEPARTMENT		PUBLIC WORKS DIRECTOR		TRAFFIC DIVISION		CHIEF P.W. ENGINEER	9/19/86	DESIGNED BY <i>IB/BS</i>	DRAWN BY <i>IB/BS</i>	CHECKED BY <i>IB/BS</i>		<table border="1" style="width: 100%; border-collapse: collapse;"> <tr> <td colspan="2" style="text-align: center;">PLAN &amp; PROFILE SEWER IMPROVEMENT PLANS</td> </tr> <tr> <td colspan="2" style="text-align: center;">BATHURST LANE HARCOURT CIRCLE</td> </tr> <tr> <td style="text-align: center;">HORIZ. SCALE: 1" = 40'</td> <td style="text-align: center;">VERT. SCALE: 1" = 8'</td> </tr> </table>	PLAN & PROFILE SEWER IMPROVEMENT PLANS		BATHURST LANE HARCOURT CIRCLE		HORIZ. SCALE: 1" = 40'	VERT. SCALE: 1" = 8'	ACCOUNT NO. <b>S-1505</b> SHEET <b>5</b> OF <b>6</b>
<b>CITY OF RIVERSIDE</b>		<b>PUBLIC WORKS DEPARTMENT</b>																																	
APPROVED BY	DATE	APPROVED BY	DATE																																
PRINCIPAL ENGINEER	7-6-88	<i>Barry Bell</i>	9/20/88																																
PARK DEPARTMENT		PUBLIC WORKS DIRECTOR																																	
TRAFFIC DIVISION		CHIEF P.W. ENGINEER	9/19/86																																
DESIGNED BY <i>IB/BS</i>	DRAWN BY <i>IB/BS</i>	CHECKED BY <i>IB/BS</i>																																	
PLAN & PROFILE SEWER IMPROVEMENT PLANS																																			
BATHURST LANE HARCOURT CIRCLE																																			
HORIZ. SCALE: 1" = 40'	VERT. SCALE: 1" = 8'																																		



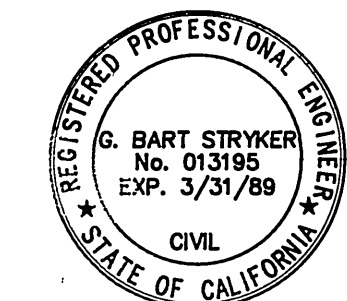


PROFILE SCALES  
 HORIZ. 1" = 40'  
 VERT. 1" = 8'



- CONSTRUCTION NOTES
1. CONST. 8" V.C.P. SEWER MAIN
  2. CONST. LATERALS PER CITY OF RIVERSIDE STD. 562
  3. CONST. MANHOLES PER CITY OF RIVERSIDE STD. 500

CURVE DATA			
	DELTA	RADIUS	LENGTH
A	24° 18' 47"	375.00	167.62
B	32° 48' 39"	405.00	231.73



CITY OF RIVERSIDE  
 WATER DEPARTMENT  
 Carl Weingarten DATE 5/25/88

BRASS DISK IN 12" CONC. MON. S.W. COR. OF GRAMERCY & SIERRA VISTA ON BACK OF CURB AT THE N.W. END OF SIDEWALK PLANTER.  
 CITY B.M. F1-A ELEV. = 806.587

STRYKER ENGINEERING  
 CIVIL ENGINEERING & PLANNING  
 1522 E. FOURTH STREET, SUITE 206  
 SANTA ANA, CA 92701  
 PH. (714) 954-0433  
 G. Bart Stryker 12.1.87  
 G. BART STRYKER, R.C.E. 13195 (EXP. 3/31/89)

MARK	REVISIONS	APPR. DATE

DESIGNED BY 12/18/83 DRAWN BY 12/18/83 CHECKED BY 12/18/83

CITY OF RIVERSIDE  
 PUBLIC WORKS DEPARTMENT  
 APPROVED BY DATE BY  
 PRINCIPAL ENGINEER 9-16-88  
 TRAFFIC DIVISION  
 CHIEF P.W. ENGINEER 9/19/88  
 APPROVED BY DATE BY  
 PUBLIC WORKS DIRECTOR  
 9/20/88

PLAN & PROFILE  
 SEWER IMPROVEMENT PLANS  
 ACADIA DRIVE  
 &  
 KEDGWICK COURT  
 HORIZ. SCALE: 1" = 40' VERT. SCALE: 1" = 8'

ACCOUNT NO.  
 S-1505  
 SHEET 6 OF 6