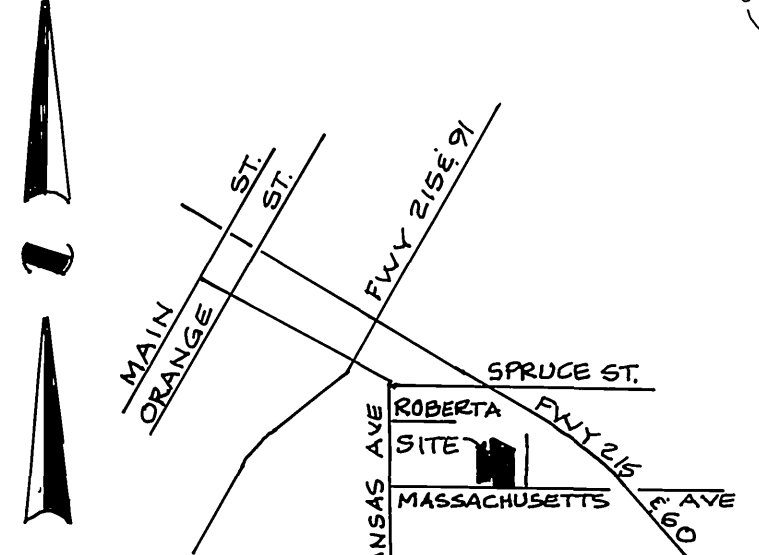
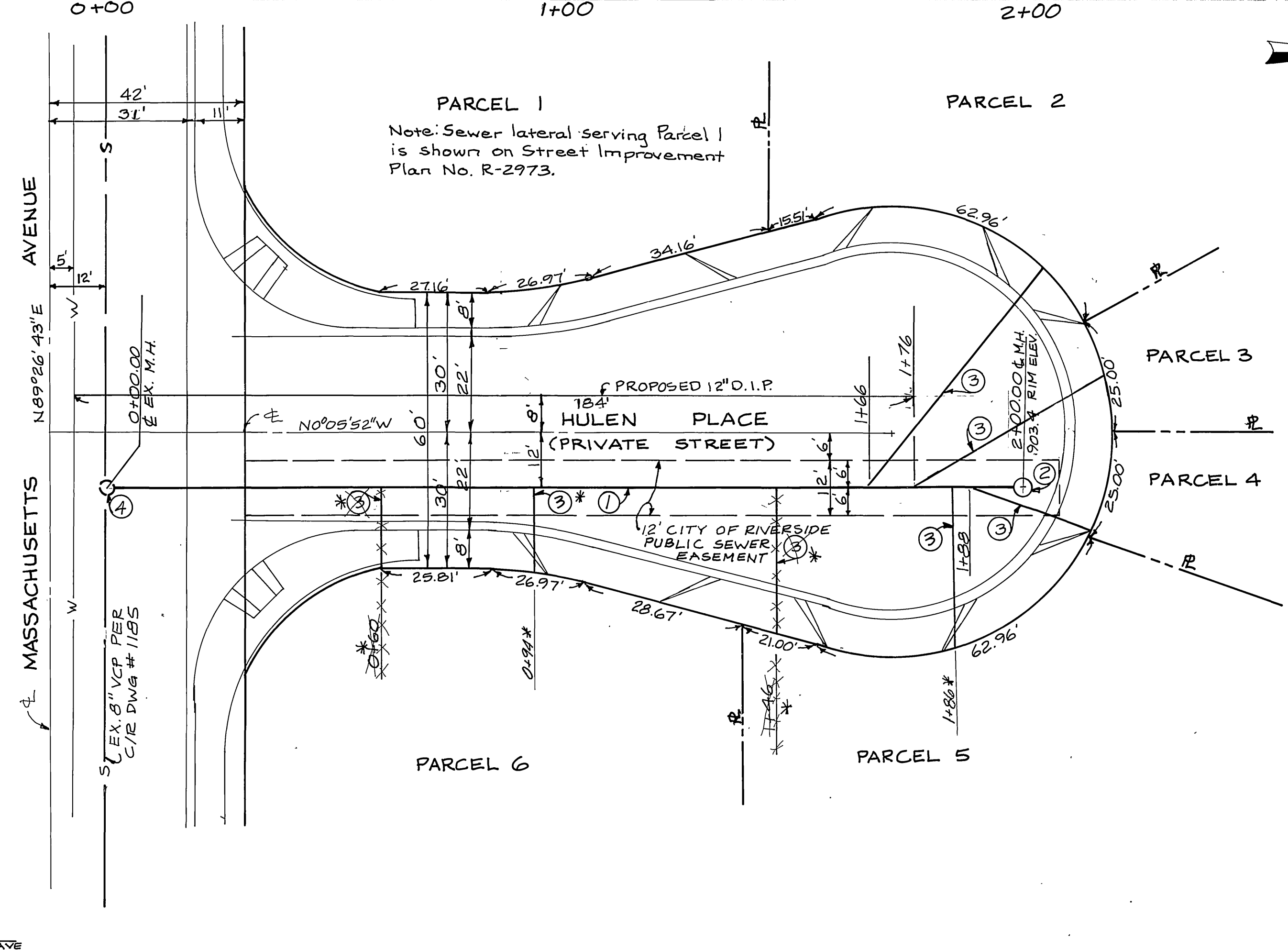


- GENERAL NOTES**
- IT SHALL BE THE RESPONSIBILITY OF THE CONTRACTOR TO CLEAR THE RIGHT-OF-WAY IN ACCORDANCE WITH THE PROVISIONS OF LAW AS IT AFFECTS EACH UTILITY INCLUDING IRRIGATION LINES AND APPURTENANCES AND @ NO COST TO THE CITY.
 - CONSTRUCTION SHALL BE IN ACCORDANCE WITH THE CITY OF RIVERSIDE DEPT. OF PUBLIC WORKS, STD. DRAWINGS, STD. DRAWING NO. 10 AND THE STD. SPECIFICATIONS FOR PUBLIC WORKS CONSTRUCTION, CURRENT EDITION.
 - THE PRIVATE ENGINEER SIGNING THESE PLANS IS RESPONSIBLE FOR ENSURING THE ACCURACY AND ACCEPTABILITY OF THE WORK HEREON. IN THE EVENT OF DISCREPANCIES ARISING DURING CONSTRUCTION, THE PRIVATE ENGINEER SHALL BE RESPONSIBLE FOR DETERMINING AN ACCEPTABLE SOLUTION AND REVISING THE PLANS FOR APPROVAL BY THE CITY.
 - QUANTITIES SHOWN HEREON ARE FOR INFORMATION ONLY AND THE CITY OF RIVERSIDE IS NOT RESPONSIBLE FOR THEIR ACCURACY.
 - ALL FINISHED ELEVATIONS SHALL BE STAKED IN THE FIELD BY THE PRIVATE ENGINEER.
 - ON ALL AREAS WITHIN PUBLIC RIGHT-OF-WAY WHERE THE FILL IS ONE (1) FOOT OR GREATER, A LETTER WILL BE REQUIRED FROM THE SOILS ENGINEER CERTIFYING THE COMPACTON OF THE FILL BELOW SUBGRADE, PRIOR TO ISSUANCE OF THE CONSTRUCTION PERMIT, CITY SHEETS.
 - THE CONTRACTOR SHALL CALL IN A LOCATION REQUEST TO UNDERGROUND SERVICE ALERT (USA) PHONE NO. 1-800-427-4133, 2 WORKING DAYS BEFORE DIGGING. NO CONSTRUCTION PERMIT WILL BE ISSUED BY THE PUBLIC WORKS DEPT. INVOLVING EXCAVATION FOR UNDERGROUND FACILITIES UNLESS THE APPLICANT HAS BEEN PROVIDED AN INQUIRY IDENTIFICATION NUMBER (I.S.A.).
 - A CONTRACTOR IS TO VERIFY EXISTING SEWER ELEVATION PRIOR TO CONSTRUCTION.
 - LOCATION OF LATERALS TO BE DETERMINED IN THE FIELD @ THE DIRECTION OF THE OWNER.
 - UNFINISHED FLOOR ELEVATION SHALL BE LESS THAN 4" ABOVE SEWER FLOW LINE @ POINT OF CONNECTION W/OUT HAVING A PROPER BACK WATER VALVE INSTALLED IN THE LATERAL.
 - A PLUG SHALL BE INSTALLED AND WILL REMAIN IN PLACE WHERE THE NEW SEWER COMBES WITH THE EXISTING SEWER UNLESS THE NEW SEWER IS ACCEPTED BY THE CITY.
 - THE SEWER CONTRACTOR SHALL ADJUST MANHOLES TO FINAL GRADES AFTER PAVING IS COMPLETED.

PROFILE SCALE:
HORIZ.: 1" = 20'
VERT.: 1" = 4'

CONSTRUCTION NOTES	QUANTITY ESTIMATES
① CONST. 8" VCP	196 L.F.
② CONST. CONC. M.H. PER C/R STD. DWG. 500	1 EA.
③ CONST. SEWER LATERAL PER C/R STD. DWG. 562	5 EA.
④ BREAK INTO EX. M.H. AND FORM NEW CHANNEL @ BASE	1 EA.



VICINITY MAP NO SCALE

BENCHMARK.
BRASS DISK STAMPED (17-A) CAPPED @ THE INTERSECTION OF E THIRD ST. & CHICAGO AVE. ELEV. = 941.005

CITY OF RIVERSIDE WATER SYSTEMS APPROVED BY: <i>Richard J. Dwyer</i> 1-17-89 DATE PACIFIC TELEPHONE: 518-88 APPROVED BY: <i>John B. Abell</i> DATE: 4/23/89		CITY OF RIVERSIDE OVERHEAD AND UNDERGROUND APPROVED BY: <i>John B. Abell</i> DATE: 4/23/89		JOHN B. ABELL, INC. 140 W. ORANGE STREET COVINA, CA. 91723 (818) 919-7671 John B. Abell 4-13-88 JOHN B. ABELL RCE 9070 DATE		C/R BUSINESS TAX CERT. NO. 0070701 (7/19/89)		*AS BUILT 6-12-92 B.M.C.	
CITY OF RIVERSIDE PUBLIC WORKS DEPARTMENT				SEWER PLAN AND PROFILE		ACCOUNT NO.			
APPROVED BY: <i>Benny Beck</i> DATE: 2/26/89 PRINCIPAL ENGINEER PARK DEPARTMENT TRAFFIC DIVISION CHIEF P.W. ENGINEER				HULEN PLACE PARCEL MAP NO. 22083 FROM MASSACHUSETTS TO 184' NLY.		S-1509			
DESIGNED BY: <i>CC</i> DRAWN BY: <i>RM</i> CHECKED BY: <i>CC</i>				HORIZ. SCALE: 1" = 20' VERT. SCALE: 1" = 4'		SHEET 1 OF 1			