

ESTIMATE OF QUANTITIES	
8" V.C.P. Sewer Line	2347.99
4" V.C.P. Sewer Line	
Std. Manholes No. 500	10
Std. Cleanout No. 560	4
No. of House Connections	56

RIVERSIDE ENGINEERING CO. INC.
 RIVERSIDE, CALIFORNIA
 APPROVED *George O. Crawley, P.E.* DATE 11/10/59

CITY OF RIVERSIDE, CALIFORNIA
DEPARTMENT OF PUBLIC WORKS

SEWER PLAN & PROFILE
 HOLLY LANE TOYON ROAD
 ROBLYNN MANOR UNIT 3

HORZ 1"=50' VERT 1"=5'

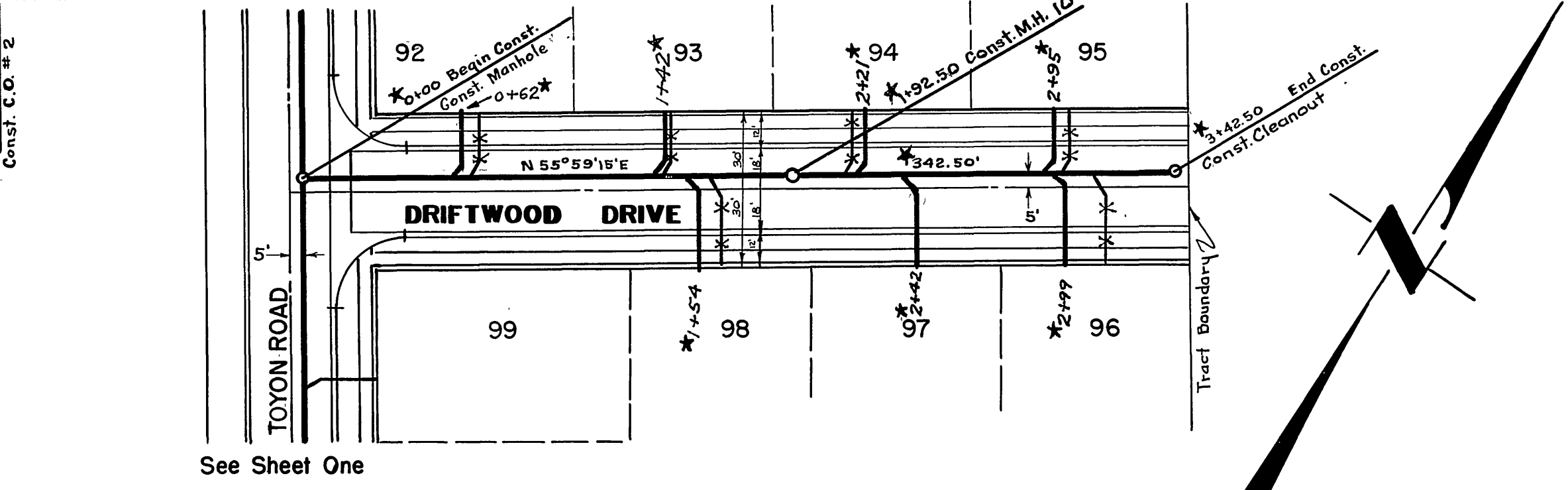
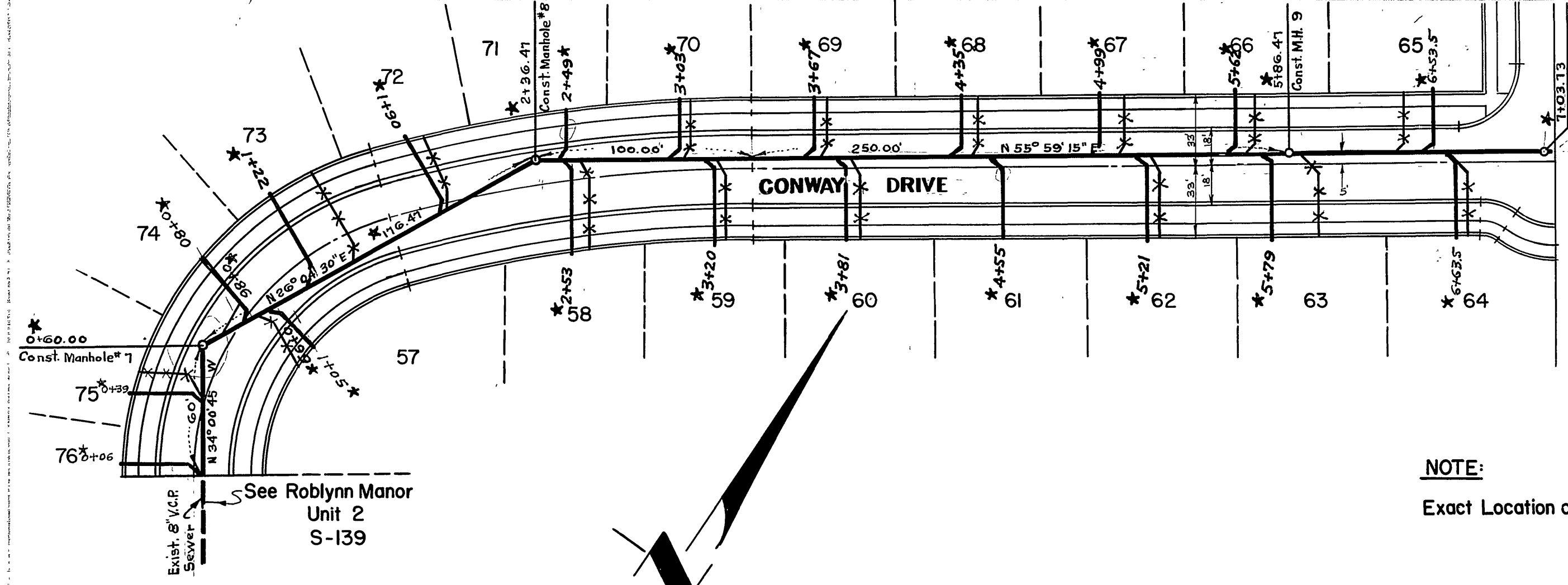
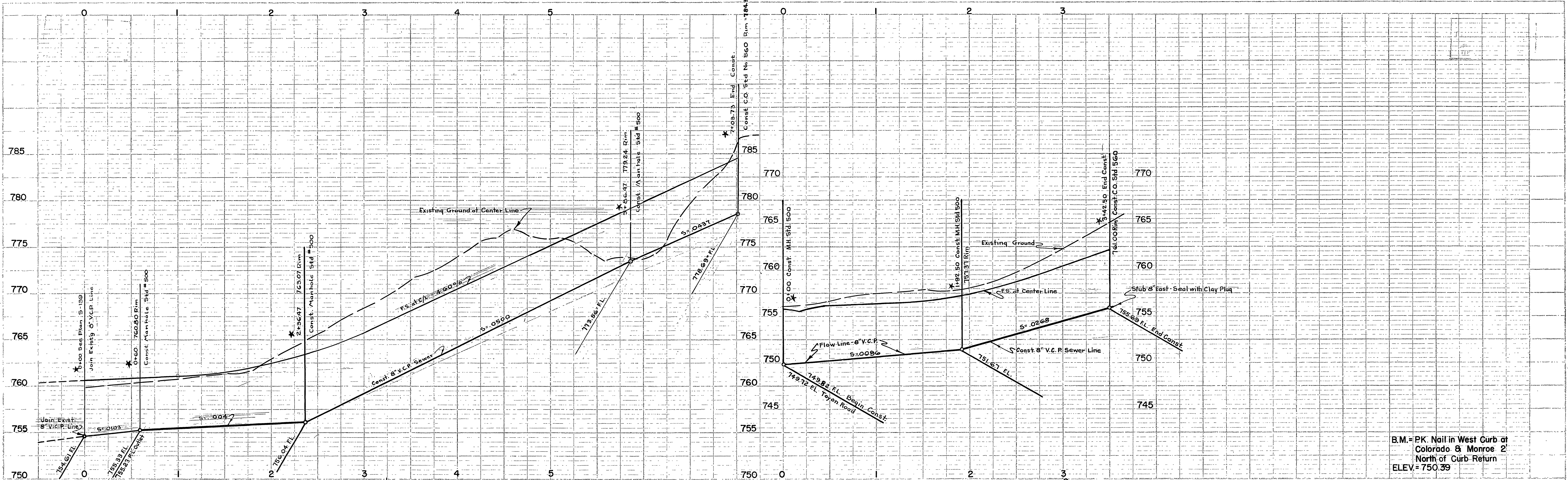
APPROVED BY *Marked*
 DIRECTOR OF PUBLIC WORKS

DATE 2-10-59 No. S-151 Sheet 1 of 2

* = "As Built", H. Ball, 6-1-59

PROJECT: SEWER
 LOCATION: HOLLY LANE
 DATE: 11/10/59
 DRAWN BY: R. K. NOBLE
 CHECKED BY: STRUCTURE PLANNING CO. INC.

DATE: 11/10/59
 DRAWN BY: R. K. NOBLE
 CHECKED BY: STRUCTURE PLANNING CO. INC.



NOTE:
Exact Location of House Connections to be Determined in the Field

B.M. = P.K. Nail in West Curb at Colorado & Monroe 2' North of Curb Return
ELEV. = 750.39

REVISED PLAN
This plan has been revised by raising the grade of the sewer line on Conway Dr. from Sta. 2+36.47 to Sta. 7+03.73
Approved *George O. Crawley* R.E. 9455
Date 3-25-58

RIVERSIDE ENGINEERING CO. INC.
RIVERSIDE, CALIFORNIA
APPROVED *George O. Crawley* R.E. 9455 DATE 11/10/58

CITY OF RIVERSIDE, CALIFORNIA
DEPARTMENT OF PUBLIC WORKS

SEWER PLAN & PROFILE
CONWAY DR.
DRIFTWOOD DR.
ROBLYNN MANOR UNIT 3

HORZ 1"=50' VERT 1"=5'

APPROVED BY *W. Matthews* DIRECTOR OF PUBLIC WORKS No. S-151
DATE 2-10-59 Sheet 2 of 2

* = "As Built" H. Ball C-1-59

WEP
wds
9455

JD 2216, FB 53

DATE	11/10/58
BY	W. Matthews
CHECKED	W. Matthews
APPROVED	George O. Crawley
PROJECT	SEWER PLAN & PROFILE
NO. OF SHEETS	2
SHEET NO.	2

DATE	11/10/58
BY	W. Matthews
CHECKED	W. Matthews
APPROVED	George O. Crawley
PROJECT	SEWER PLAN & PROFILE
NO. OF SHEETS	2
SHEET NO.	2