

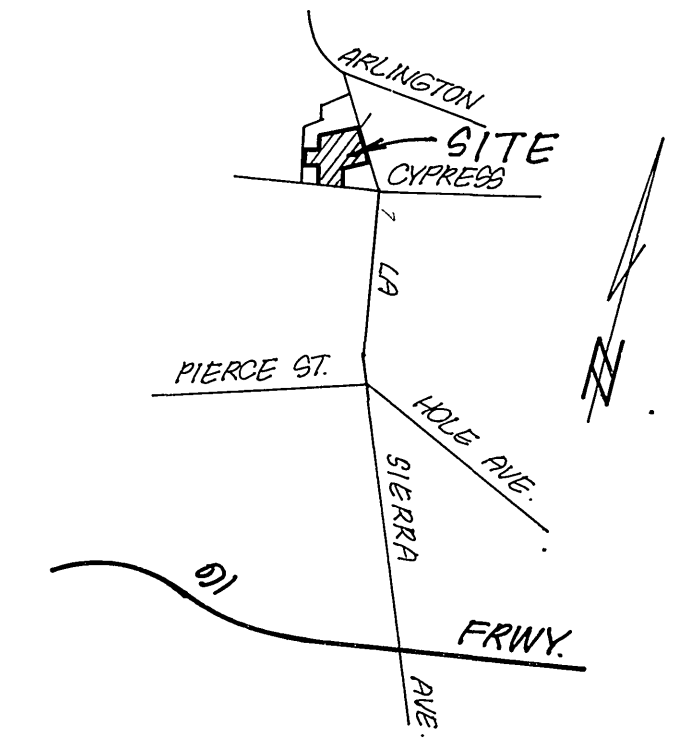
TRACT NO. 22108 SEWER PLANS

GENERAL NOTES:

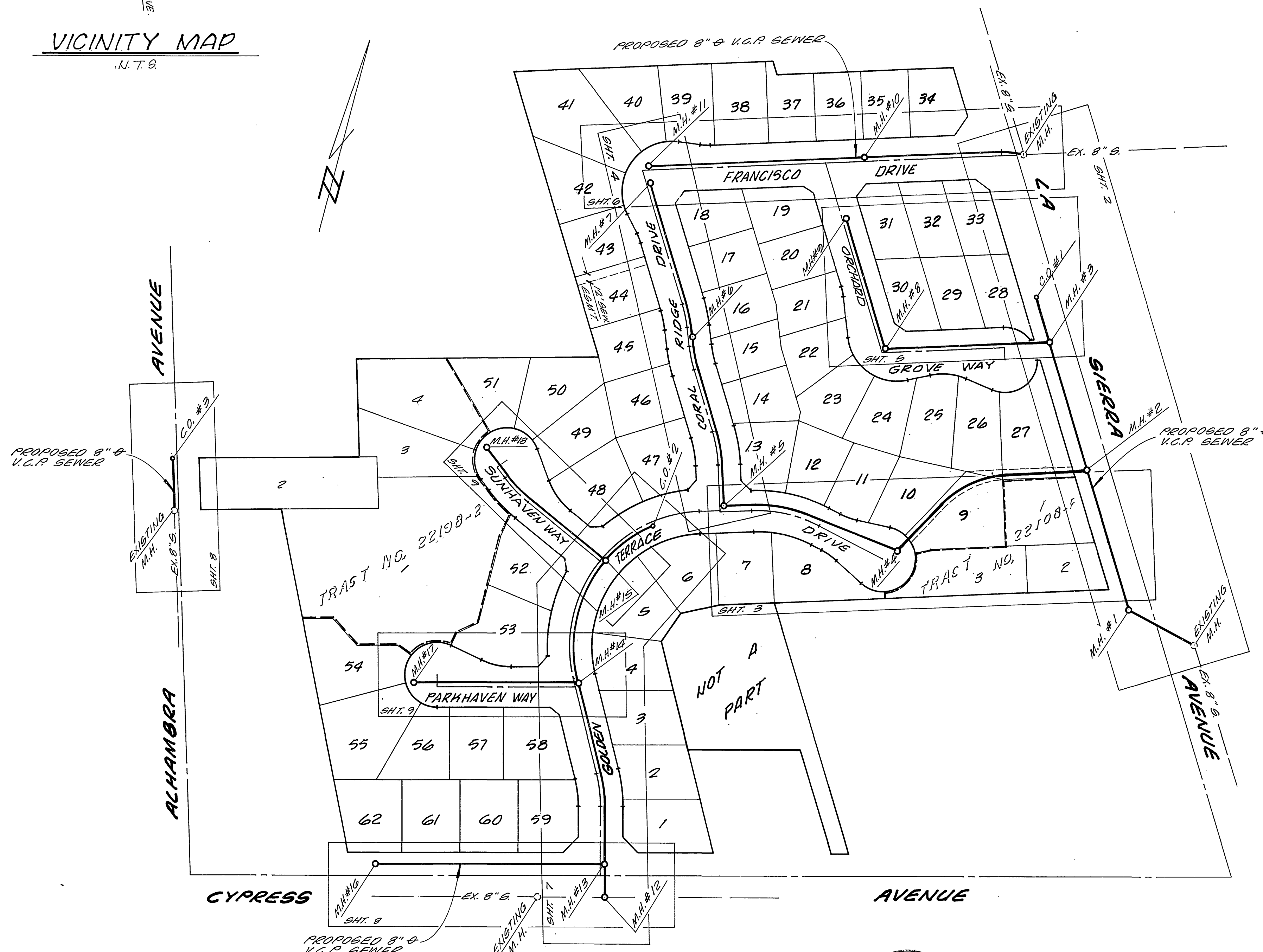
- IT SHALL BE THE RESPONSIBILITY OF THE CONTRACTOR TO CLEAR THE RIGHT OF WAY IN ACCORDANCE WITH THE PROVISIONS OF LAW AS IT AFFECTS EACH UTILITY INCLUDING IRRIGATION LINES AND APPURTENANCES AND AT NO COST TO THE CITY.
- CONSTRUCTION SHALL BE IN ACCORDANCE WITH THE CITY OF RIVERSIDE DEPARTMENT OF PUBLIC WORKS, STANDARD DRAWINGS, THE STANDARD SPECIFICATIONS FOR PUBLIC WORKS CONSTRUCTION, CURRENT EDITION, AND STANDARD DRAWING NO. 10.
- THE CONTRACTOR SHALL CALL IN A LOCATION REQUEST TO UNDERGROUND SERVICE ALERT (USA), PHONE NO. 1-800-422-4133, TWO WORKING DAYS BEFORE DIGGING. NO CONSTRUCTION PERMIT WILL BE ISSUED BY THE PUBLIC WORKS DEPARTMENT INVOLVING EXCAVATION FOR UNDERGROUND FACILITIES UNLESS THE APPLICANT HAS BEEN PROVIDED AN INQUIRY IDENTIFICATION NUMBER BY USA.
- CONTRACTOR IS TO VERIFY EXISTING SEWER ELEVATION PRIOR TO CONSTRUCTION.
- LOCATION OF LATERALS TO BE DETERMINED IN THE FIELD AT THE DIRECTION OF THE OWNER. AVOID CONFLICT WITH PROPOSED AND/OR EXISTING FACILITIES.
- NO FINISHED FLOOR ELEVATION SHALL BE LESS THAN 4" ABOVE THE SEWER FLOW LINE AT POINT OF CONNECTION WITHOUT HAVING A PROPER BACKWATER VALVE INSTALLED IN THE LATERAL.
- A PLUG SHALL BE INSTALLED AND WILL REMAIN IN PLACE WHERE THE NEW SEWER CONNECTS WITH THE EXISTING SEWER UNTIL THE NEW SEWER IS ACCEPTED BY THE CITY.
- THE SEWER CONTRACTOR SHALL ADJUST MANHOLES TO FINAL GRADE AFTER PAVING IS COMPLETED.
- PIPE SHALL BE BEDDED PER CASE 1, STANDARD DRAWING NO. 452, UNLESS OTHERWISE SPECIFIED ON THE PLANS.
- ANY TRAFFIC CONTROL STRIPING OBTAINED AND/OR BADLY WORN DURING CONSTRUCTION SHALL BE RESTORED BY THE CONTRACTOR WITHIN FIVE DAYS AFTER SATISFACTION FROM THE CITY INSPECTORS.
- LATERALS ARE TO BE 4" V.C.P. AND EXTENDED TO PROPERTY LINE.
- QUANTITIES SHOWN ARE FOR INFORMATION ONLY AND THE CITY OF RIVERSIDE IS NOT RESPONSIBLE FOR THEIR ACCURACY.
- ALL FLAGGED ELEVATIONS SHALL BE STAKED IN THE FIELD BY THE ENGINEER.
- THE PRIVATE ENGINEER SIGNING THESE PLANS IS RESPONSIBLE FOR ASSURING THE ACCURACY AND ACCEPTABILITY OF THE WORK HEREON. IN THE EVENT OF DISCREPANCIES ARISING DURING CONSTRUCTION, THE PRIVATE ENGINEER SHALL BE RESPONSIBLE FOR DETERMINING AN ACCEPTABLE SOLUTION AND REVISING THE PLANS FOR APPROVAL BY THE CITY.
- THE DEVELOPER SHALL BE RESPONSIBLE FOR PRESERVING OR RE-ESTABLISHING AND REFERENCING SURVEY MONUMENTS DESTROYED, DISTURBED OR BURIED AS A RESULT OF CONSTRUCTION SHOWN HEREON.

CONSTRUCTION NOTES

- CONSTRUCT 8" V.C.P. SEWER LINE.
- CONSTRUCT 4" V.C.P. LATERAL TO PROPERTY LINE, PER STD. NO. 562.
- CONSTRUCT MANHOLE PER CITY STANDARD NO. 500.
- CONSTRUCT CLEANOUT PER CITY STANDARD NO. 560.



VICINITY MAP
N.T.S.



INDEX MAP
SCALE: 1"=100'



PACIFIC BELL TELEPHONE CO. REVIEWED BY: <i>[Signature]</i> DATE: 1-26-88 CITY OF RIVERSIDE - PUBLIC UTILITIES ELECTRIC REVIEWED BY: <i>[Signature]</i> DATE: 12/11/87	SOUTHERN CALIFORNIA GAS COMPANY REVIEWED BY: <i>[Signature]</i> DATE: 12-11-87 CITY OF RIVERSIDE - WATER SYSTEM REVIEWED BY: <i>[Signature]</i> DATE: 7/27/88	L A WAINSCOTT & ASSOCIATES CIVIL ENGINEERS 22400 BARTON RD. SUITE 200 GRAND TERRACE, CALIFORNIA (714) 824-1775 APPROVED BY: <i>[Signature]</i> DATE: 12/1/87 R.C.E. 28248	BENCH MARK: 82-M P.K. NAIL & CITY ENG. TAG, IN EASTERLY CURB OF LA SIERRA AVE. 40' NORTHERLY OF CENTERLINE OF PALM TERRACE LANE ELEV. = 770.743'	CITY OF RIVERSIDE, CALIFORNIA DEPARTMENT OF PUBLIC WORKS APPROVED BY: <i>[Signature]</i> DATE: 10/28/88 OFFICE ENGINEER: <i>[Signature]</i> PARK DEPARTMENT: <i>[Signature]</i> TRAFFIC DIVISION: <i>[Signature]</i> ASSISTANT CITY ENG.: <i>[Signature]</i> DATE: 10/28/88	SEWER PLAN AND PROFILE TRACT NO. 22108-1 INDEX MAP SHT. 1 OF 1 SCALE: AS SHOWN HORIZ.: N.A. VERT.: N.A. W.O. 527.01
--	--	---	---	---	---

805

795

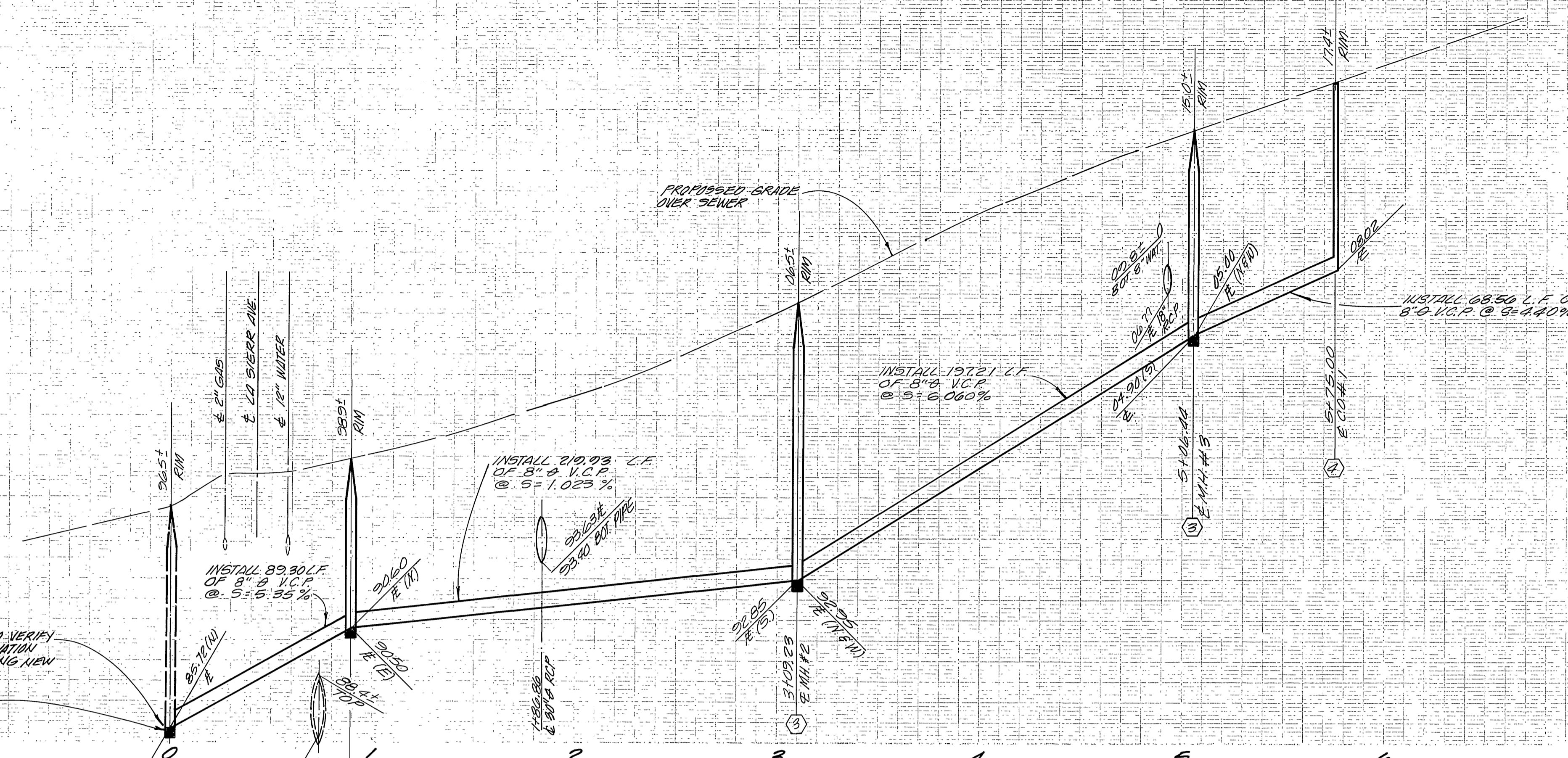
815

805

CONTRACTOR IS TO VERIFY EXIST. SEWER ELEVATION PRIOR TO INSTALLING NEW SEWER LINE.
RE CONTOUR BOTTOM OF M.H. FOR FLOW.

PROFILE SCALE
HORIZ. 1"=40'
VERT. 1"=4'

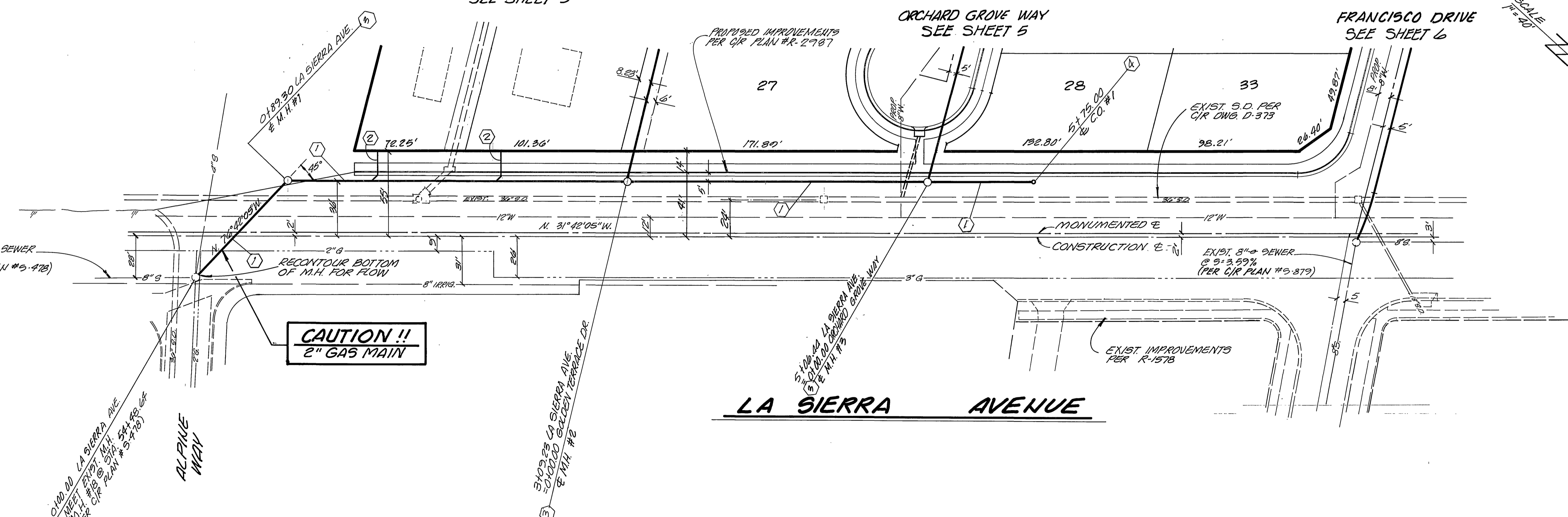
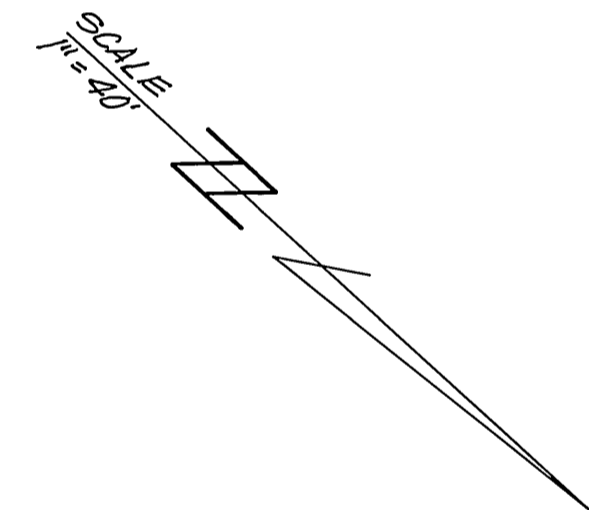
FUT 117 07
07 175
11 114 3



GOLDEN TERRACE DRIVE
SEE SHEET 3

ORCHARD GROVE WAY
SEE SHEET 5

FRANCISCO DRIVE
SEE SHEET 6



CAUTION !!
2" GAS MAIN

PACIFIC BELL TELEPHONE CO.
Reviewed by B. D. Brown 1-26-88
DATE

CITY OF RIVERSIDE - WATER SYSTEM
Approved by Carl Wengertner 7/27/88
DATE

SOUTHERN CALIFORNIA GAS CO.
Approved by E. P. Rubin 6-2-88
DATE

L A WAINSCOTT & ASSOCIATES
22400 BARTON RD. CIVIL ENGINEERS
SUITE 200 GRAND TERRACE, CALIFORNIA
(714) 824-1775

APPROVED BY James E. Sharp No. 28248
R.C.E. 28248 DATE 10/28/88
STATE OF CALIFORNIA

MARK REVISIONS APPR. DATE

DESIGNED BY PERNIE DRAWN BY EL CHECKED BY EL

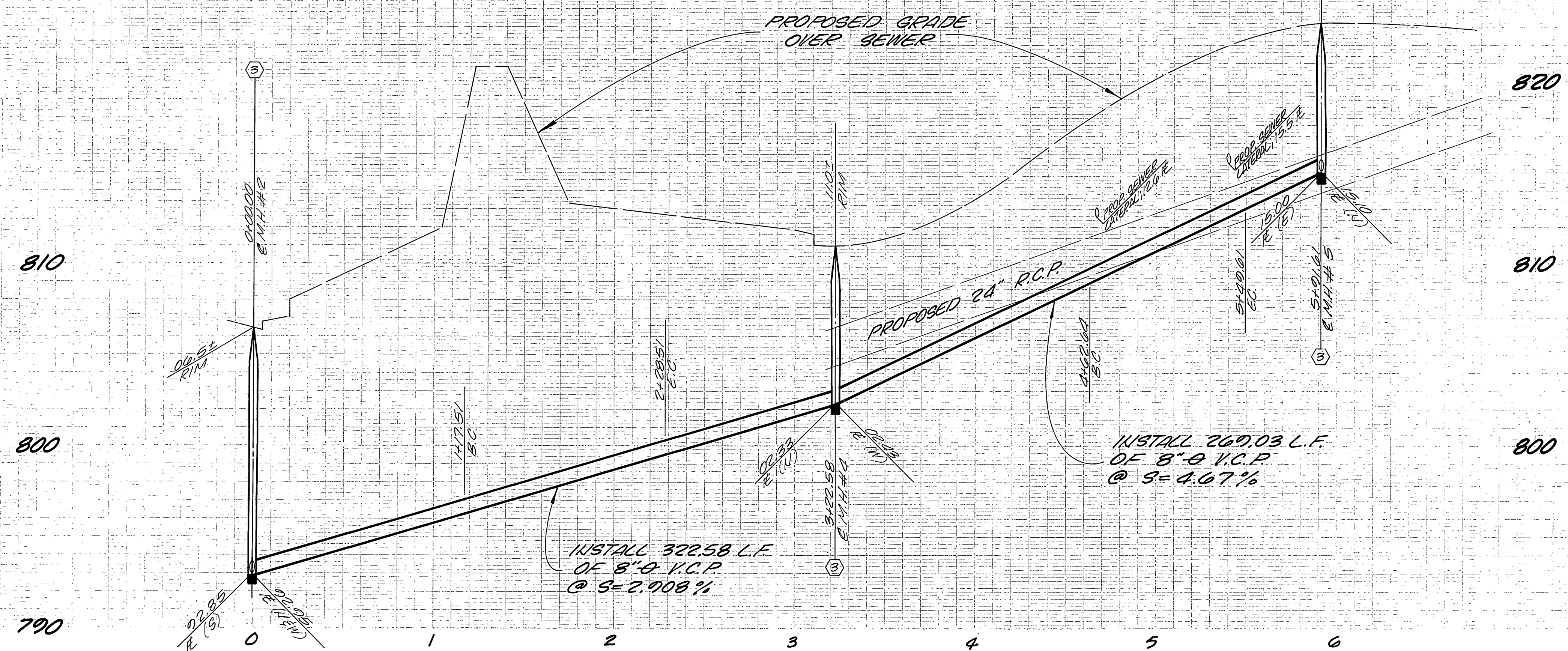
BENCH MARK: 62-M
P.K. 1414.8 CITY ENGINEER
7200 N. GARDENWAY CLIPSE
OF LA SIERRA AVENUE
80' S NORTHERLY OF CENTER
LINE OF PALM TERRACE
CANE.
ELEV. = 770.743

CITY OF RIVERSIDE, CALIFORNIA
DEPARTMENT OF PUBLIC WORKS

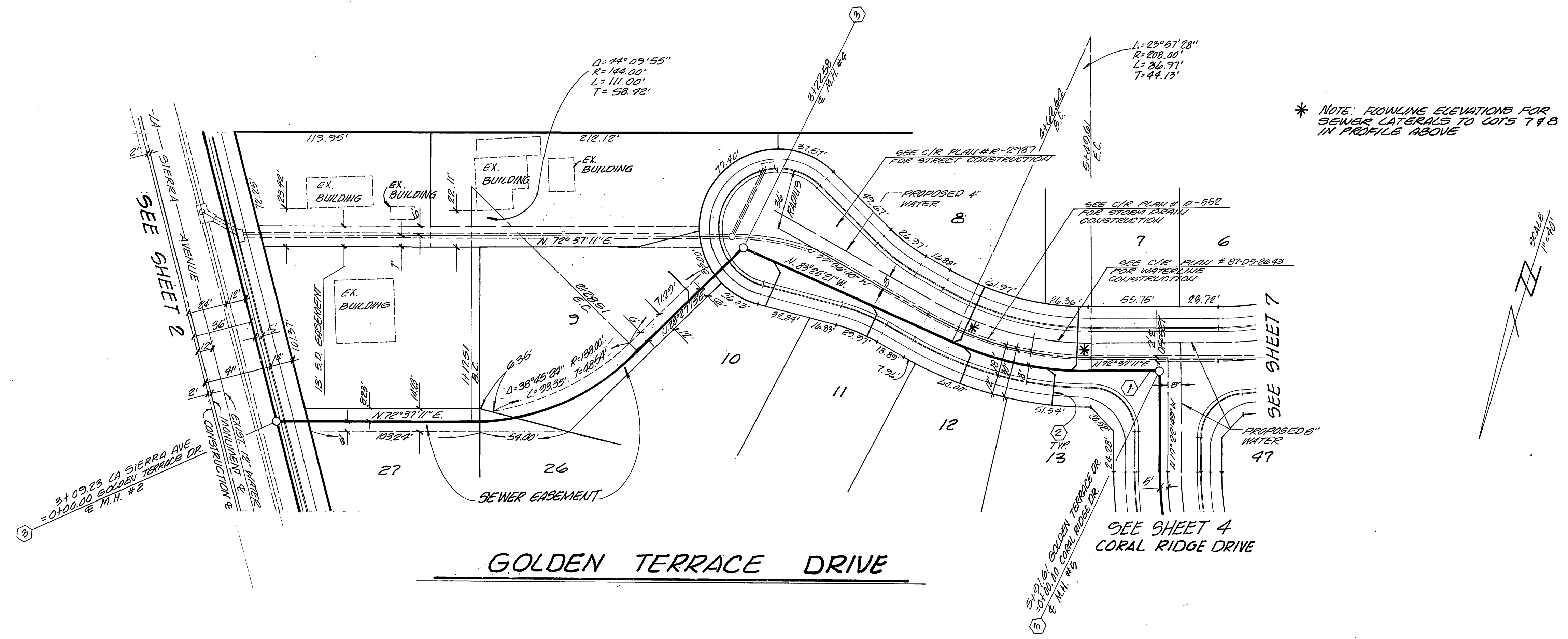
APPROVED BY: Barry Paul DATE: 10/28/88
PRINCIPAL ENG. DATE: 10/25/88
TRAFFIC DIVISION
CHIEF PW ENG. DATE: 10/28/88

SEWER PLAN AND PROFILE
TRACT NO. 22108-1
LA SIERRA AVENUE
FROM ALPINE DRIVE TO 500' ± NORTHERLY

SHT. 2 OF 9
SCALE: HORIZ. 1"=40' VERT. 1"=4' W.O. 527.01
INDEXED 1-17-89 LF



PROFILE SCALE
 HORIZ 1" = 40'
 VERT 1" = 4'



GOLDEN TERRACE DRIVE

CITY OF RIVERSIDE - WATER SYSTEM
 APPROVED BY *Carl Weingarten* DATE 7/27/88



L A WAINSCOTT & ASSOCIATES
 CIVIL ENGINEERS
 22400 BARTON RD SUITE 200
 GRAND TERRACE, CALIFORNIA (714) 824-1775
 APPROVED BY *Dennis S. Druep* DATE 12/1/87
 R.C.E. 28743

MARK	REVISIONS	APPR.	DATE

DESIGNED BY *PERNIE* DRAWN BY *KL* CHECKED BY *RES*

BENCH MARK: 62-M
 P.K. MAIL AND CITY ENGINEER TAG, IN EASTERLY CURB OF LA SIERRA AVENUE, 40' NORTHERLY OF CENTER LINE OF PARK TERRACE DRIVE.
 ELEV. = 779.743

CITY OF RIVERSIDE, CALIFORNIA
 DEPARTMENT OF PUBLIC WORKS
 APPROVED BY *Barry Beal* DATE 10/28/88
 DIRECTOR OF PUBLIC WORKS

SEWER PLAN AND PROFILE
 TRACT NO. 22108-1
 GOLDEN TERRACE DRIVE
 FROM LA SIERRA AVENUE TO CORAL RIDGE DRIVE
 SCALE: HORIZ. 1" = 40' VERT. 1" = 4'

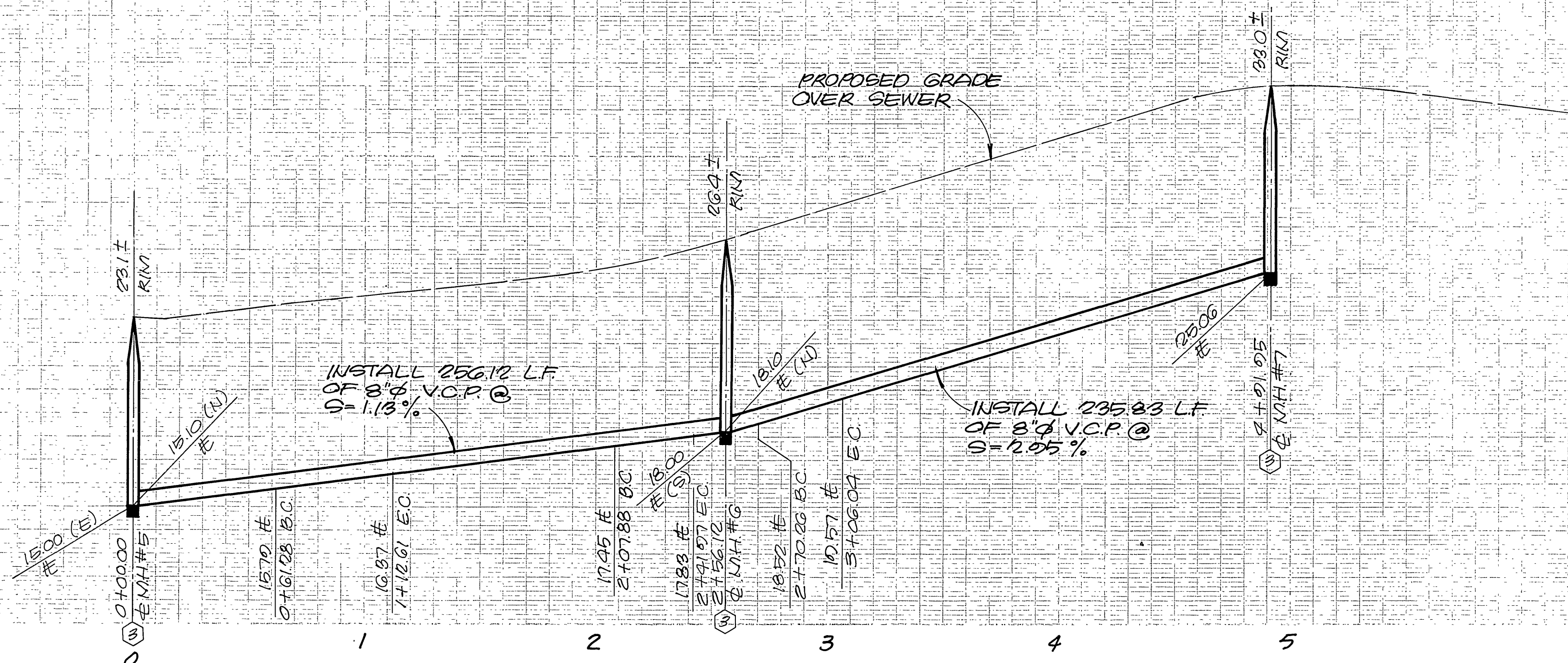
G-1512
 SHT. 3 OF 9
 W.O. 52701

830

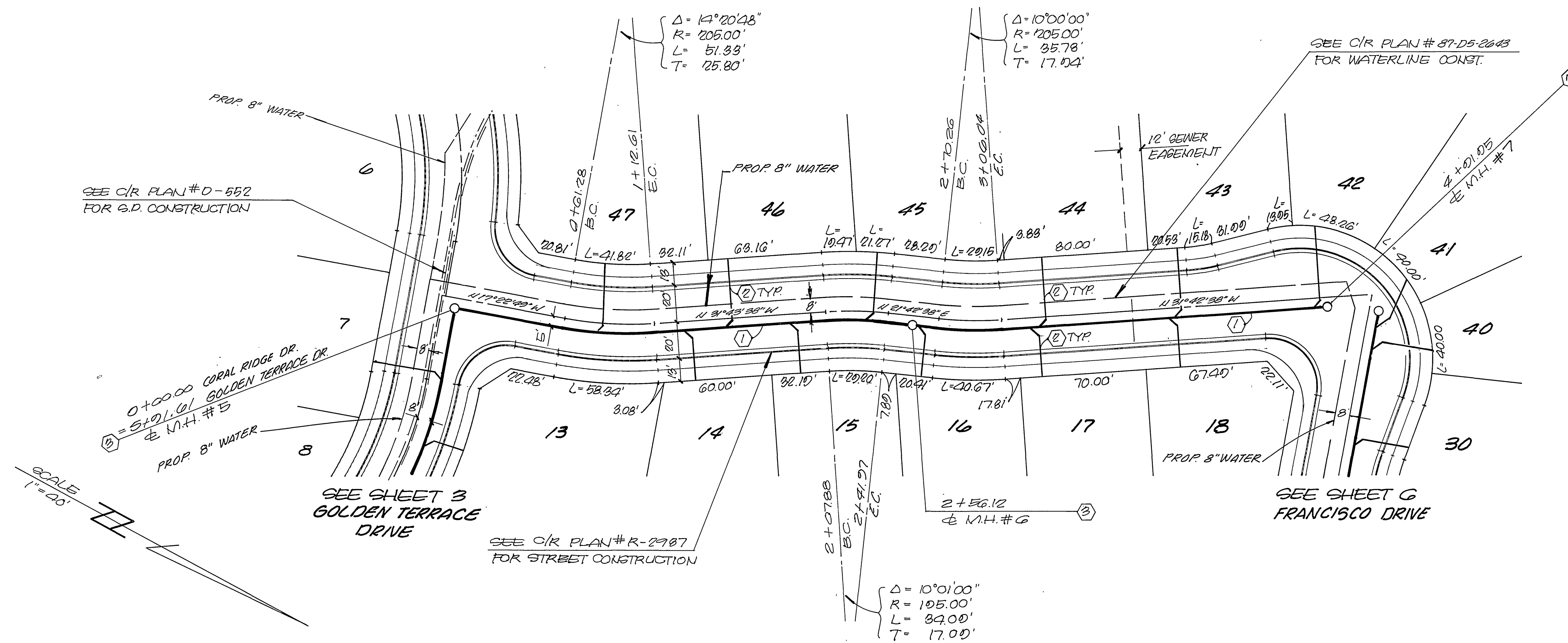
820

830

820



PROFILE SCALE
 HORIZ 1" = 40'
 VERT 1" = 4'



CORAL RIDGE DRIVE

L A WAINSCOTT & ASSOCIATES
 CIVIL ENGINEERS
 GRAND TERRACE, CALIFORNIA
 (714) 824-1775
 APPROVED BY: *Daniel S. Sharp* DATE: 12/1/87
 R.C.E. 28228

NO.	REVISIONS	APPR.	DATE

BENCH MARK: 92-M
 P.K. MAIL AND CITY
 ENGINEER TAG, IN EMPLOYER
 CARE OF CH. 28228 FILE
 40' ± NORTHERLY OF CENTER
 LINE OF PALM TERRACE
 LAKE.
 ELEV. = 779.743

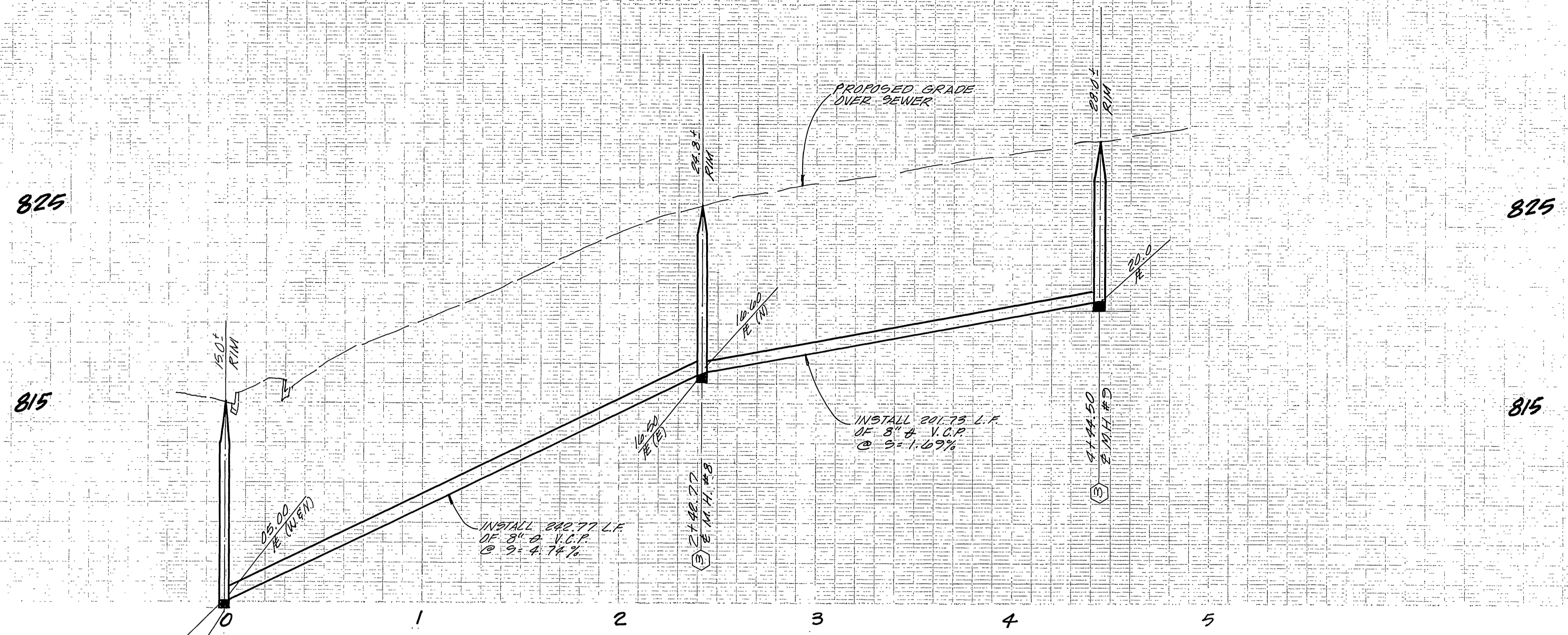
CITY OF RIVERSIDE, CALIFORNIA
 DEPARTMENT OF PUBLIC WORKS
 APPROVED BY: *Barry Paul* DATE: 10/28/88
 CHIEF PW ENG.

SEWER PLAN AND PROFILE
 TRACT NO. 22108-1
 CORAL RIDGE DRIVE
 FROM GOLDEN TERRACE DRIVE TO FRANCISCO DRIVE

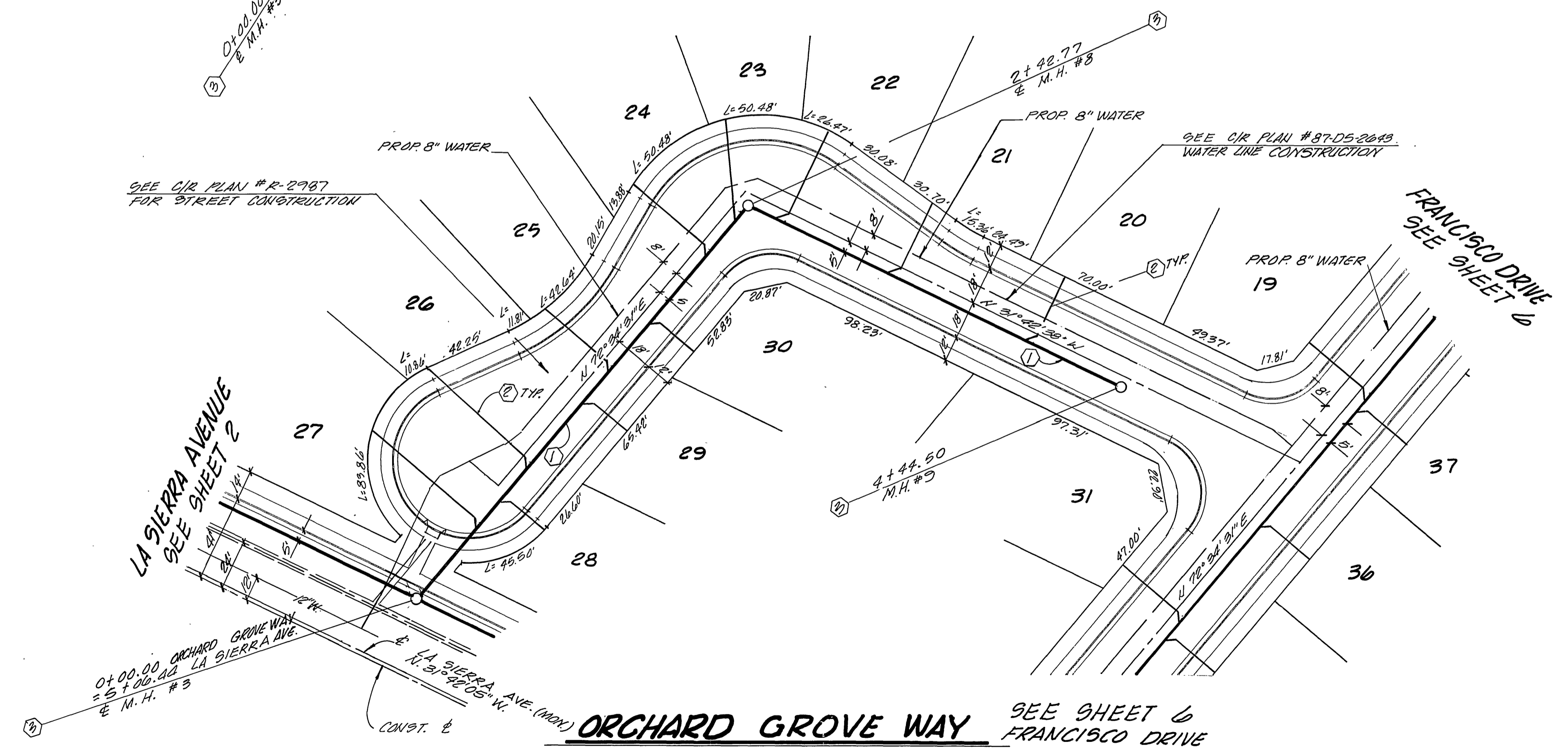
G-1512
 SHT. 4 OF 9
 W.O. 527.01

CITY OF RIVERSIDE - WATER SYSTEM
 APPROVED BY: *Carl Weingarten* DATE: 7/27/88





PROFILE SCALE:
 HORIZ 1" = 40"
 VERT 1" = 4"



CITY OF RIVERSIDE - WATER SYSTEM
 APPROVED BY: Carl Weingartner DATE: 7/27/88



L A WAINSCOTT & ASSOCIATES
 CIVIL ENGINEERS
 2240 BARTON RD.
 SUITE 200 GRAND TERRACE, CALIFORNIA
 (714) 824-1775
 APPROVED BY: Daniel E. Sharp DATE: 12/1/87
 R.C.E. 28248

MARK	REVISIONS	APPR.	DATE

DESIGNED BY: BERNIE DRAWN BY: RL CHECKED BY: RES

BENCH MARK: 62-M
 P.K. NAIL AND CITY ENGINEER
 TAGS IN SEPARATELY COVERED
 OR LA SIERRA AVENUE,
 50' NORTHERLY OF
 CENTERLINE OF
 PALM TERRACE LANE
 ELEV. = 779.743

CITY OF RIVERSIDE, CALIFORNIA
 DEPARTMENT OF PUBLIC WORKS

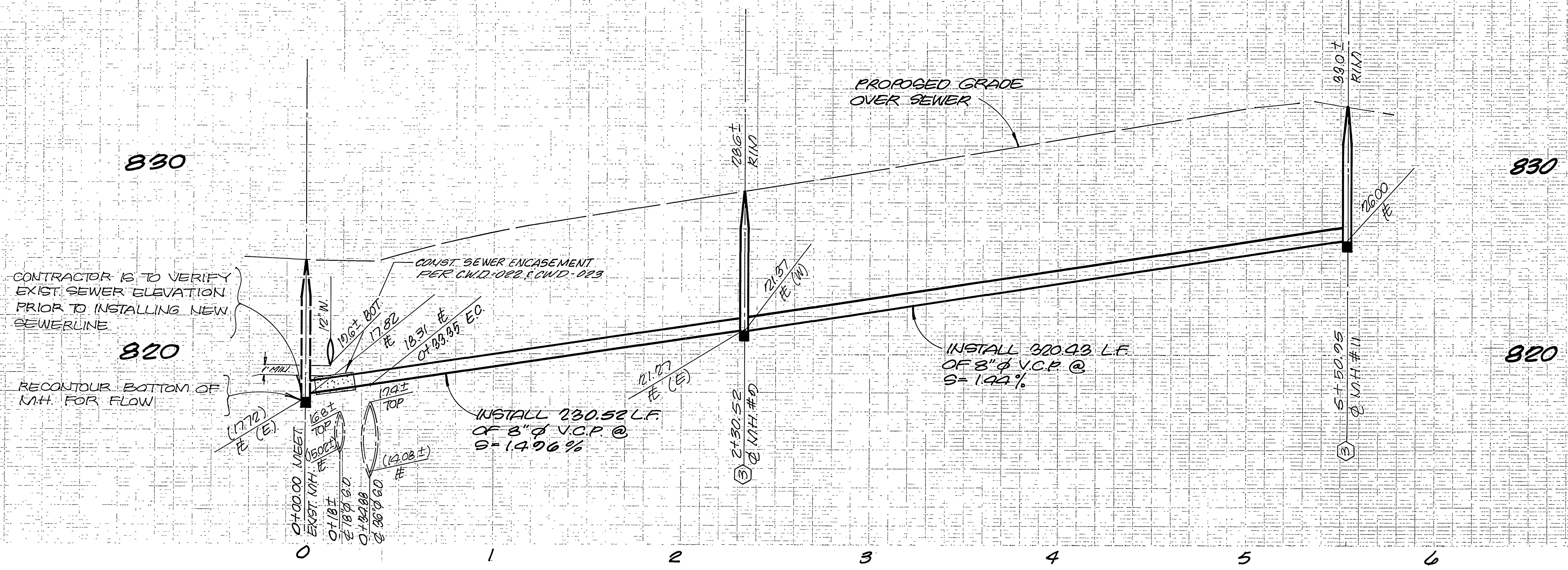
APPROVED BY: Barry Paul DATE: 10/23/88
 CHIEF ENGINEER

SEWER PLAN AND PROFILE
 TRACT NO. 22108-1
 ORCHARD GROVE WAY
 FROM LA SIERRA AVENUE TO FRANCISCO DRIVE

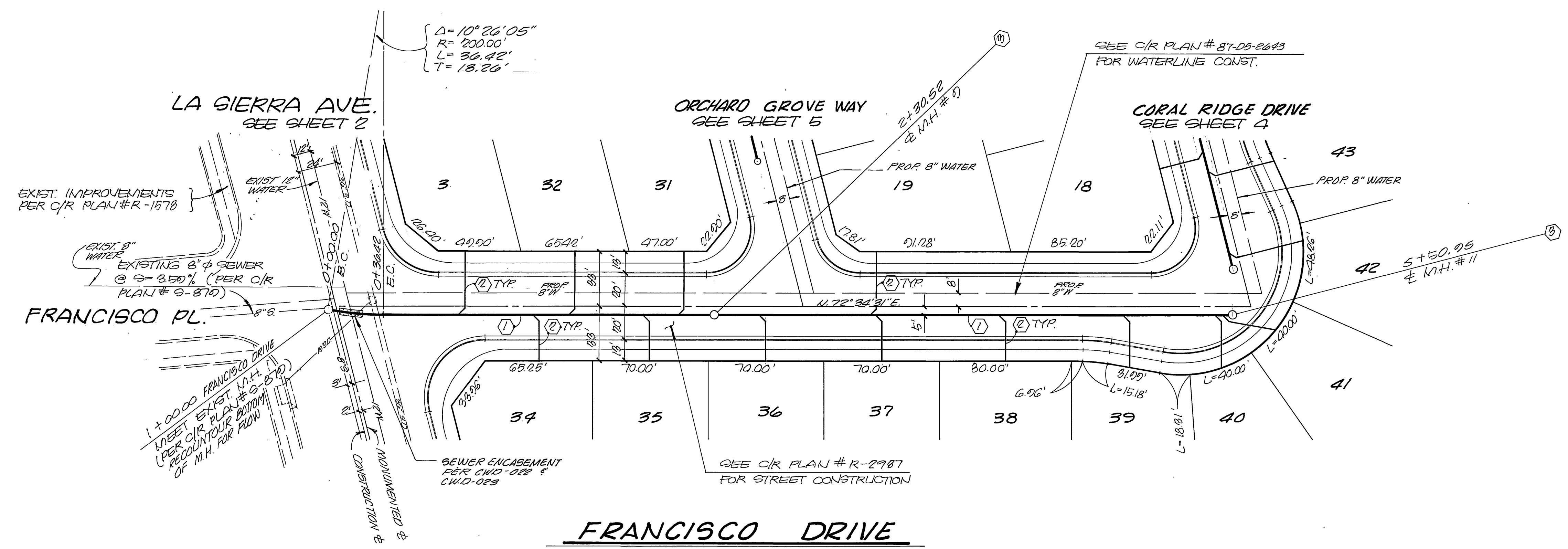
SCALE: HORIZ. 1" = 40' VERT. 1" = 4'

INDEXED 1-17-89

G-1512
 SHT. 5 OF 9
 W.O. 827.01



PROFILE SCALE
 HORIZ. 1"=40'
 VERT. 1"=8'



SCALE
 1"=40'

CITY OF RIVERSIDE - WATER SYSTEM
 APPROVED BY: *Carl Weingarten* 7/27/88
 DATE



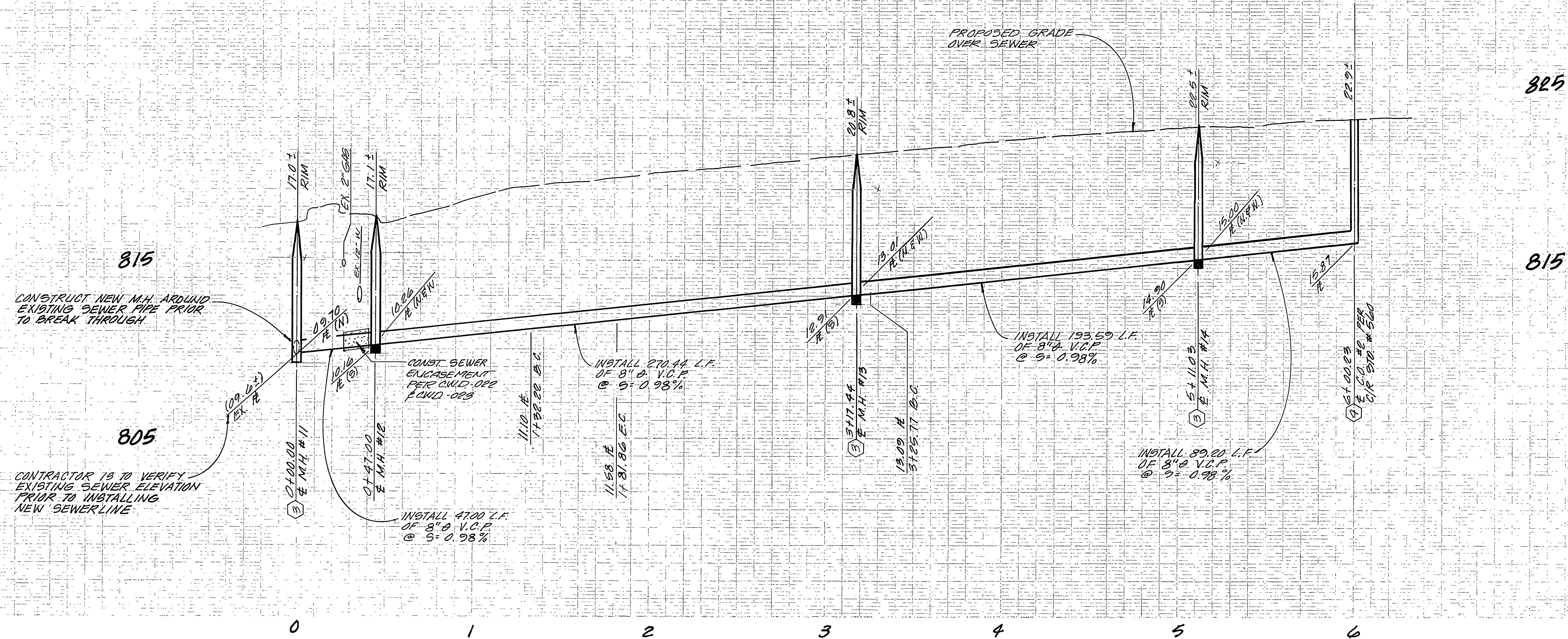
L A WAINSCOTT & ASSOCIATES
 CIVIL ENGINEERS
 2340 BARTON RD. SUITE 200
 GRAND TERRACE, CALIFORNIA 92504
 (714) 824-1775
 APPROVED BY: *Summit S. Sharp* DATE 12/1/87
 R.C.E. 28248

MARK	REVISIONS	APPR. DATE

BENCH MARK: 62-M
 P.K. 1041 & CITY ENGINEER
 1041, IN EASTERN CURB OF
 LA SIERRA AVENUE,
 60'± NORTHERLY OF CEN-
 TER LINE OF PALM TERRACE
 LANE.
 ELEV. = 779.743

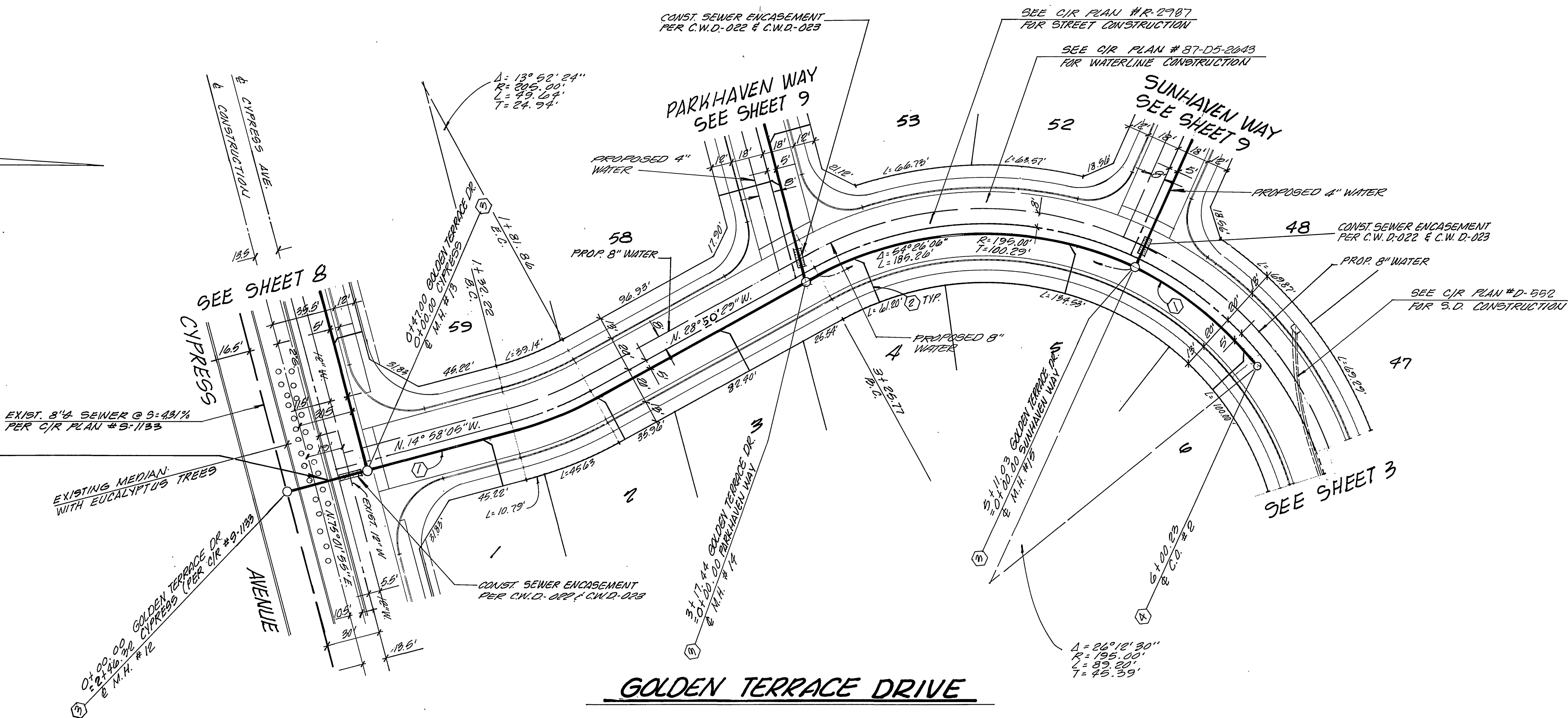
CITY OF RIVERSIDE, CALIFORNIA
 DEPARTMENT OF PUBLIC WORKS
 APPROVED BY: *Barry Bed*
 DATE 10/28/88
 TRAFFIC DIVISION
 CHIEF PARK ENGINEER

SEWER PLAN AND PROFILE
 TRACT NO. 22108-1
 FRANCISCO DRIVE
 FROM LA SIERRA AVENUE TO CORAL RIDGE DR.
 SHT. 6 OF 9
 SCALE: HORIZ. 1"=40' VERT. 1"=8'
 W.O. 52701
 INDEXED 1-17-89 44



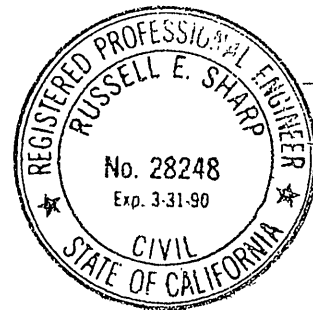
PROFILE SCALE
 HORIZ 1" = 40'
 VERT 1" = 4'

SCALE 1" = 40'



CAUTION!!
 2" GAS

SOUTHERN CALIFORNIA GAS CO.
 APPROVED BY *C. J. ...* DATE 6-2-88
 CITY OF RIVERSIDE - WATER SYSTEM
 APPROVED BY *Carl Wengert* DATE 7/27/88



L A WAINCOTT & ASSOCIATES
 CIVIL ENGINEERS
 GRAND TERRACE, CALIFORNIA
 (714) 824-1775
 APPROVED BY *Russell E. Waincott* DATE 12/1/87
 R.C.E. 28248

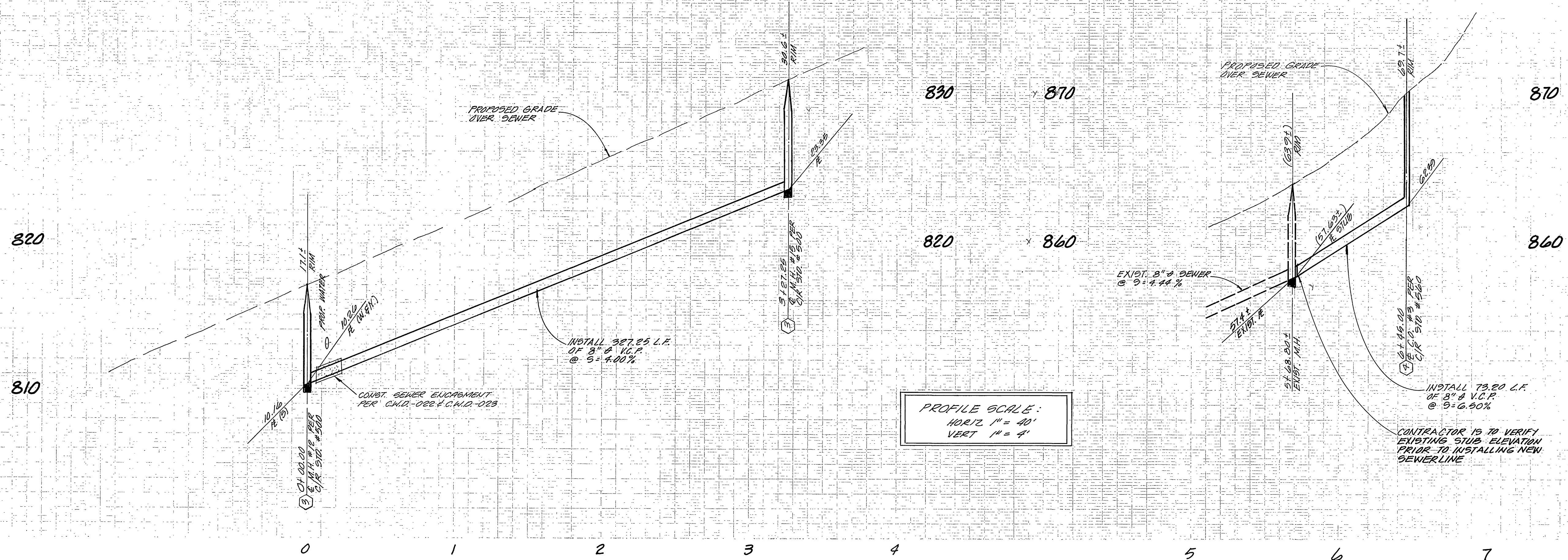
MARK	REVISIONS	APPR.	DATE

BENCH MARK: 02-M
 P.K. 1041 AND CITY ENGINEER
 790' IN GENERAL CURB OF
 LA STREET, AVENUE
 40'5' NORTHERLY OF CENTERLINE
 OF PALM TERRACE LANE.
 ELEV. = 779.743

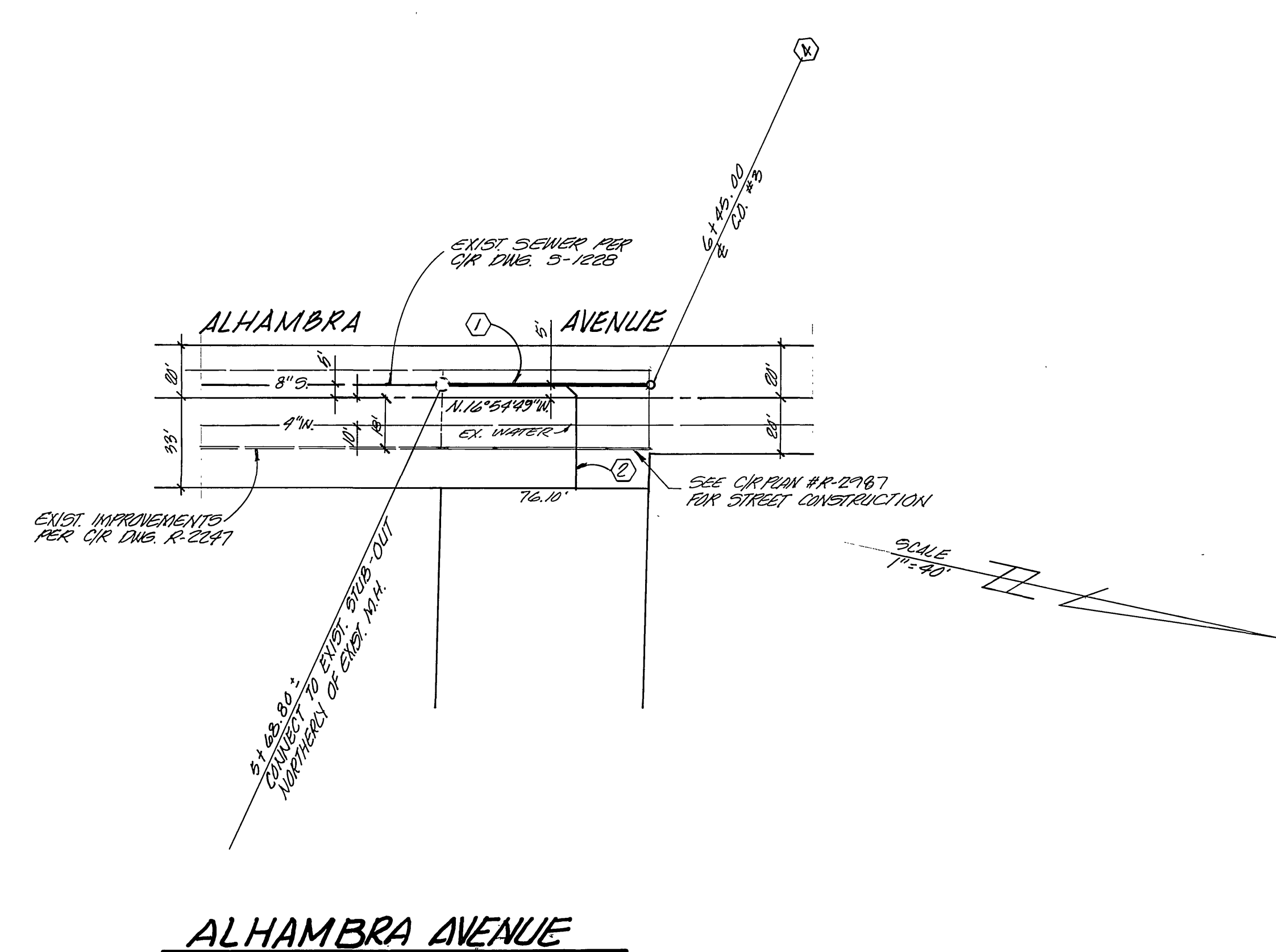
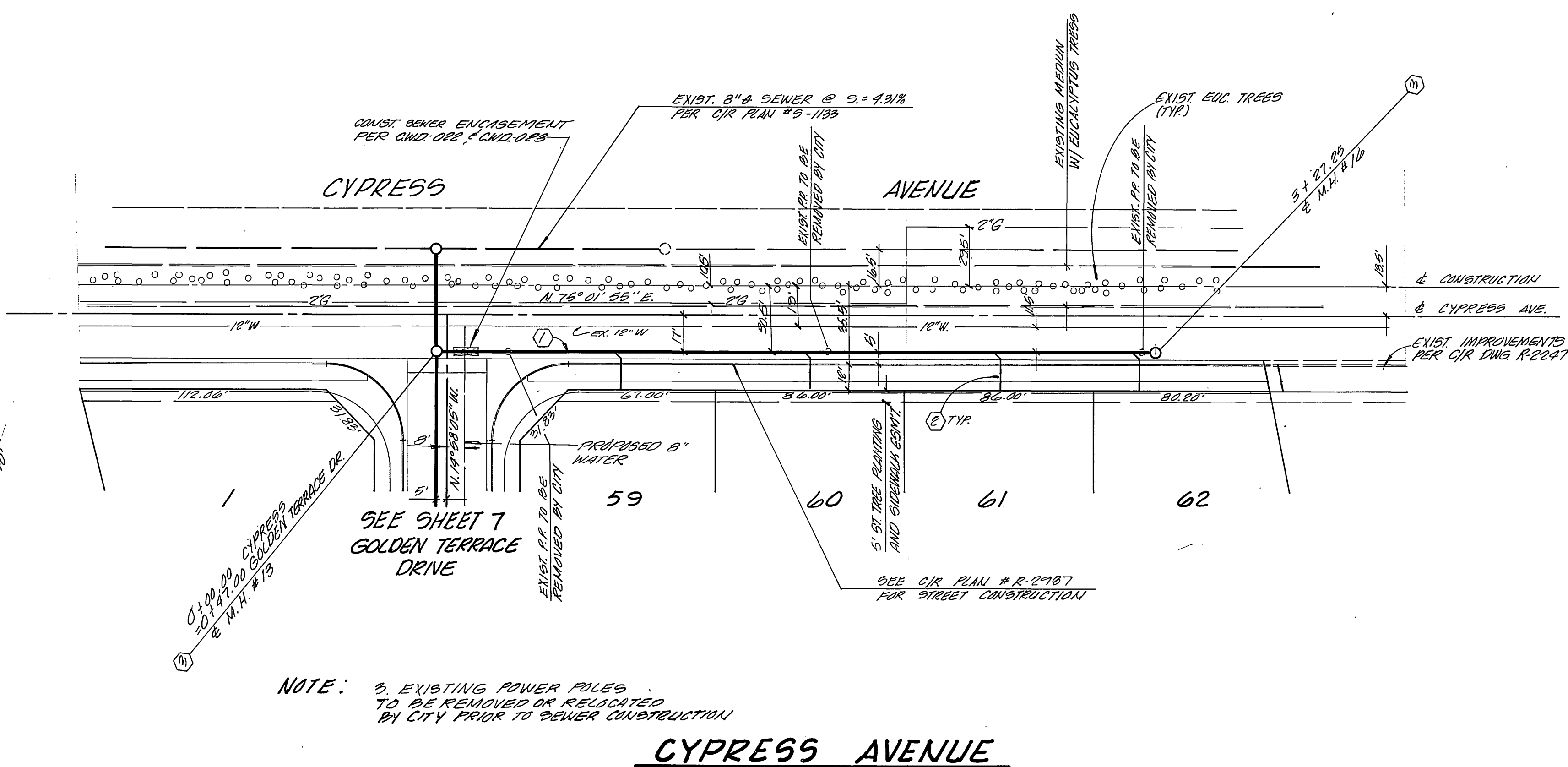
CITY OF RIVERSIDE, CALIFORNIA
 DEPARTMENT OF PUBLIC WORKS
 APPROVED BY *Barry Paul* DATE 10/28/88
 CHIEF PUBLIC WORKS

SEWER PLAN AND PROFILE
 TRACT NO. 22108-1
 GOLDEN TERRACE DRIVE
 FROM CYPRESS AVENUE 90'±
 NORTHERLY OF SUNHAVEN WAY

G-1512
 SHT. 7 OF 9
 W.O. 52701



PROFILE SCALE:
 HORIZ 1" = 40'
 VERT 1" = 4'



NOTE: 3. EXISTING POWER POLES TO BE REMOVED OR RELOCATED BY CITY PRIOR TO SEWER CONSTRUCTION

CYPRESS AVENUE

ALHAMBRA AVENUE

PACIFIC BELL TELEPHONE CO.
 REVIEWED BY: *[Signature]* DATE: 1-26-88
 CITY OF RIVERSIDE - WATER SYSTEM
 APPROVED BY: *[Signature]* DATE: 7/27/88

SOUTHERN CALIFORNIA GAS CO.
 APPROVED BY: *[Signature]* DATE: 6-2-88

L A WAINSCOTT & ASSOCIATES
 CIVIL ENGINEERS
 22480 BARTON RD.
 GRAND TERRACE, CALIFORNIA
 (714) 824-1775
 APPROVED BY: *[Signature]* DATE: 7/27/88
 R.C.E. 28242

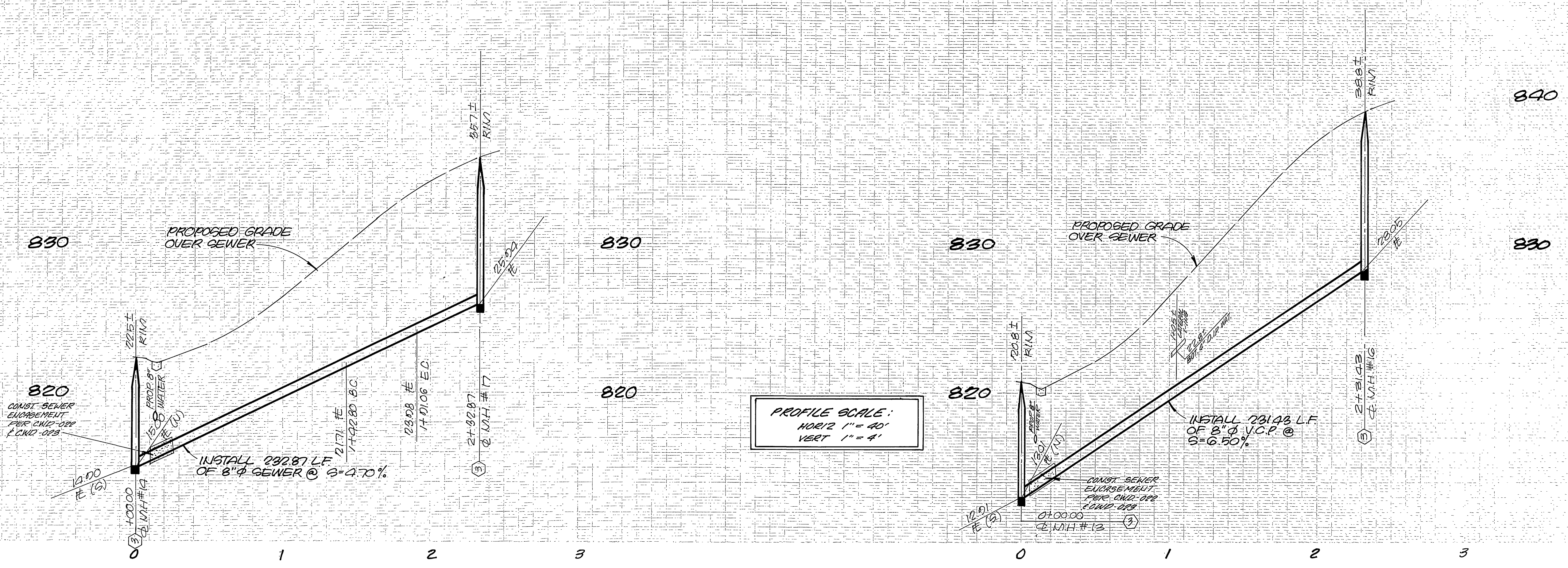
MARK REVISIONS APPR. DATE
 DESIGNED BY: *[Signature]* DRAWN BY: *[Signature]* CHECKED BY: *[Signature]*

CITY OF RIVERSIDE, CALIFORNIA
 DEPARTMENT OF PUBLIC WORKS
 APPROVED BY: *[Signature]* DATE: 10-28-88
 CHIEF, PW DIV.

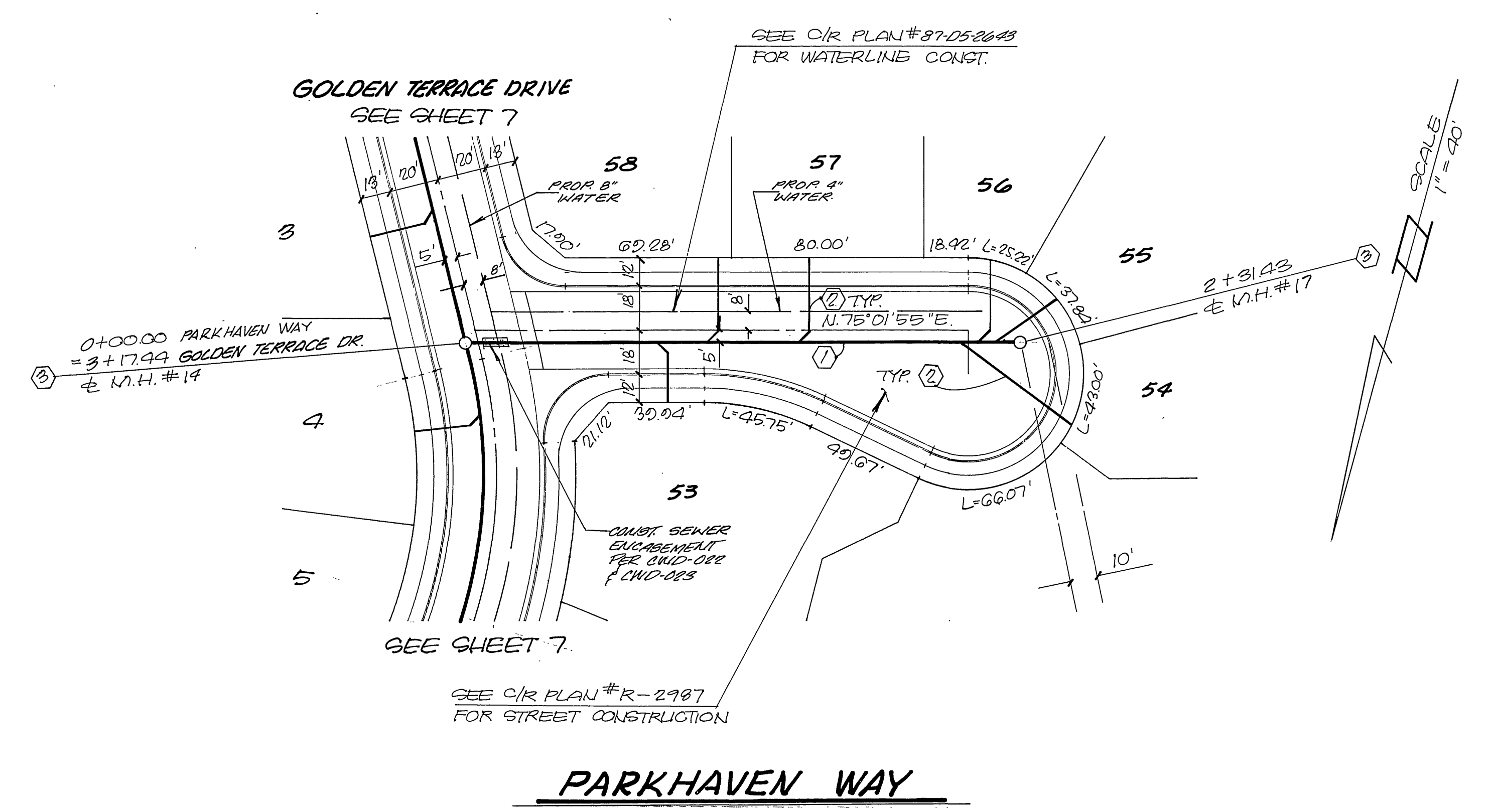
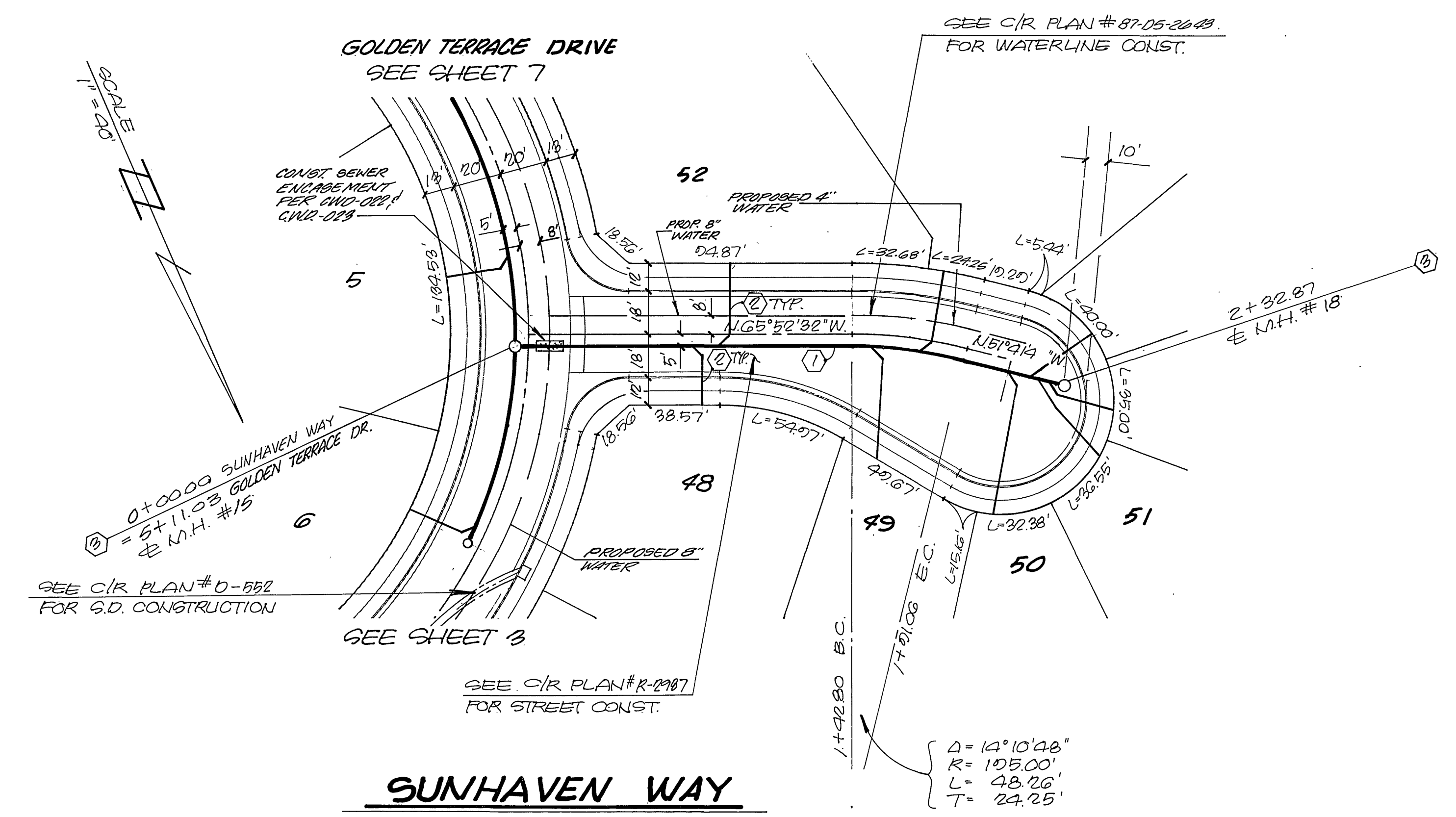
SEWER PLAN AND PROFILE
 TRACT NO. 22108-1
 CYPRESS AVENUE
 FROM GOLDEN TERRACE DR. TO 300' W.W.L.
 ALHAMBRA AVENUE
 FROM 540' N.W.L. TO 616' N.W.L. OF CYPRESS AVE.

6-1512
 SHT. 8 OF 9
 SCALE: HORIZ. 1" = 40' VERT. 1" = 4'
 W.O. 527.01
 INDEXED 1-17-89 lfh

LOT 9, 5' x 3'
 1/2" x 1/2"
 2/10/88 4:52 PM



PROFILE SCALE:
HORIZ 1" = 40'
VERT 1" = 4"



CITY OF RIVERSIDE - WATER SYSTEM
APPROVED BY: *Carl Weinger* DATE: 7/27/88



L A WAINSCOTT & ASSOCIATES
CIVIL ENGINEERS
22240 BARTON RD. QUITE 200
GRAND TERRACE, CALIFORNIA (714) 824-1775
APPROVED BY: *Russell E. Sharp* DATE: 12/1/87
R.C.E. 28248

MARK	REVISIONS	APPR.	DATE

DESIGNED BY: *BERNIE* DRAWN BY: *ESR* CHECKED BY: *R.E.S.*

BENCH MARK: 62-14
P.K. MAIL AND CITY ENGINEER TRS. IN EXTERIOR CORNER OF CH. SIBBEN PLUMBING, 40' NORTHERLY OF CENTERLINE OF PALM TERRACE DRIVE.
ELEV. = 170.749

CITY OF RIVERSIDE, CALIFORNIA
DEPARTMENT OF PUBLIC WORKS
APPROVED BY: *Barry Red* DATE: 10/28/88
TRAFFIC DIVISION: *10-25*
CHIEF PW ENGR. DATE: 10/28/88

SEWER PLAN AND PROFILE
TRACT NO. 22108-1
SUNHAVEN WAY
FROM GOLDEN TERRACE DR. 332.87' WLY
PARKHAVEN WAY
FROM GOLDEN TERRACE DR. 231.43' SLY
SHT. 9 OF 9
SCALE: HORIZ.: 1" = 40' VERT.: 1" = 4'
W.O. 527.01
INDEXED 1-7-89 *lfh*