

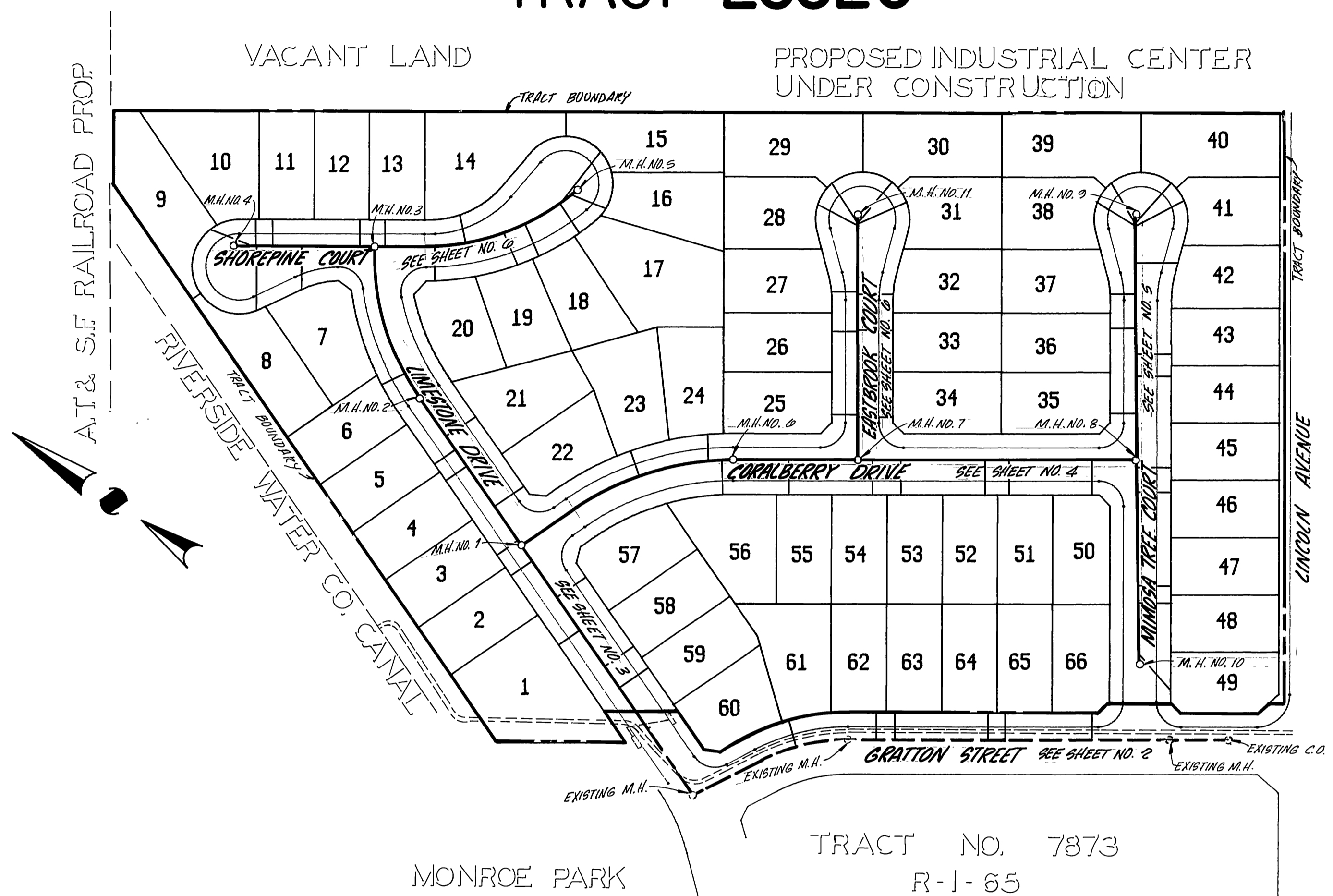
GENERAL NOTES

1. THE PRIVATE ENGINEER SIGNING THESE PLANS IS RESPONSIBLE FOR THE ACCURACY AND ACCEPTABILITY OF THE WORK HEREON. IN THE EVENT OF DISCREPANCIES ARISING DURING CONSTRUCTION THE PRIVATE ENGINEER SIGNING THE PLANS SHALL BE RESPONSIBLE FOR DETERMINING AN ACCEPTABLE SOLUTION AND REVISING THE PLANS FOR APPROVAL BY THE CITY.
2. IT SHALL BE THE RESPONSIBILITY OF THE CONTRACTOR TO CLEAR THE RIGHT-OF-WAY IN ACCORDANCE WITH THE PROVISIONS OF LAW AS IT AFFECTS EACH UTILITY INCLUDING IRRIGATION LINES AND APPURTENANCES AND AT NO COST TO THE CITY.
3. CONSTRUCTION SHALL BE IN ACCORDANCE WITH THE CITY OF RIVERSIDE DEPARTMENT OF PUBLIC WORKS, STANDARD DRAWINGS, STANDARD DRAWING NO. 10 AND THE STANDARD SPECIFICATIONS FOR PUBLIC WORKS CONSTRUCTION, CURRENT EDITION.
4. LOCATION OF LATERALS TO BE DETERMINED IN THE FIELD AT THE DIRECTION OF THE OWNER. AVOID CONFLICT WITH PROPOSED AND/OR EXISTING FACILITIES.
5. CONTRACTOR IS TO VERIFY EXISTING SEWER ELEVATION PRIOR TO CONSTRUCTION.
6. THE SEWER CONTRACTOR SHALL ADJUST MANHOLES TO FINAL GRADE AFTER PAVING IS COMPLETED.
7. NO FINISHED FLOOR ELEVATION SHALL BE LESS THAN 4' ABOVE THE SEWER FLOW LINE AT THE POINT OF CONNECTION WITHOUT HAVING A PROPER BACKWATER VALVE INSTALLED IN THE LATERAL.
8. A PLUG SHALL BE INSTALLED AND WILL REMAIN IN PLACE WHERE THE NEW SEWER CONNECTS WITH THE EXISTING SEWER UNTIL THE NEW SEWER IS ACCEPTED BY THE CITY OF RIVERSIDE.
9. ALL MANHOLES TO BE RIVERSIDE CITY STD. NO. 500.
10. ALL FLAGGED ELEVATIONS SHALL BE STAKED IN THE FIELD BY PRIVATE ENGINEER.
11. THE CONTRACTOR SHALL CALL IN A LOCATION REQUEST TO UNDERGROUND SERVICE ALERT (USA), PHONE NO. 1-800-422-4133, TWO WORKING DAYS BEFORE DIGGING. NO CONSTRUCTION PERMIT WILL BE ISSUED BY THE PUBLIC WORKS DEPARTMENT INVOLVING EXCAVATION FOR UNDERGROUND FACILITIES UNLESS THE APPLICANT HAS BEEN PROVIDED AN INQUIRY IDENTIFICATION NUMBER BY U.S.A.
12. THE DEVELOPER SHALL BE RESPONSIBLE FOR THE PRESERVING OR RE-ESTABLISHING AND REFERENCING SURVEY MONUMENTS DESTROYED, DISTURBED OR BURIED AS A RESULT OF CONSTRUCTION SHOWN HEREON.

SEWER IMPROVEMENT PLANS

FOR

TRACT 23320

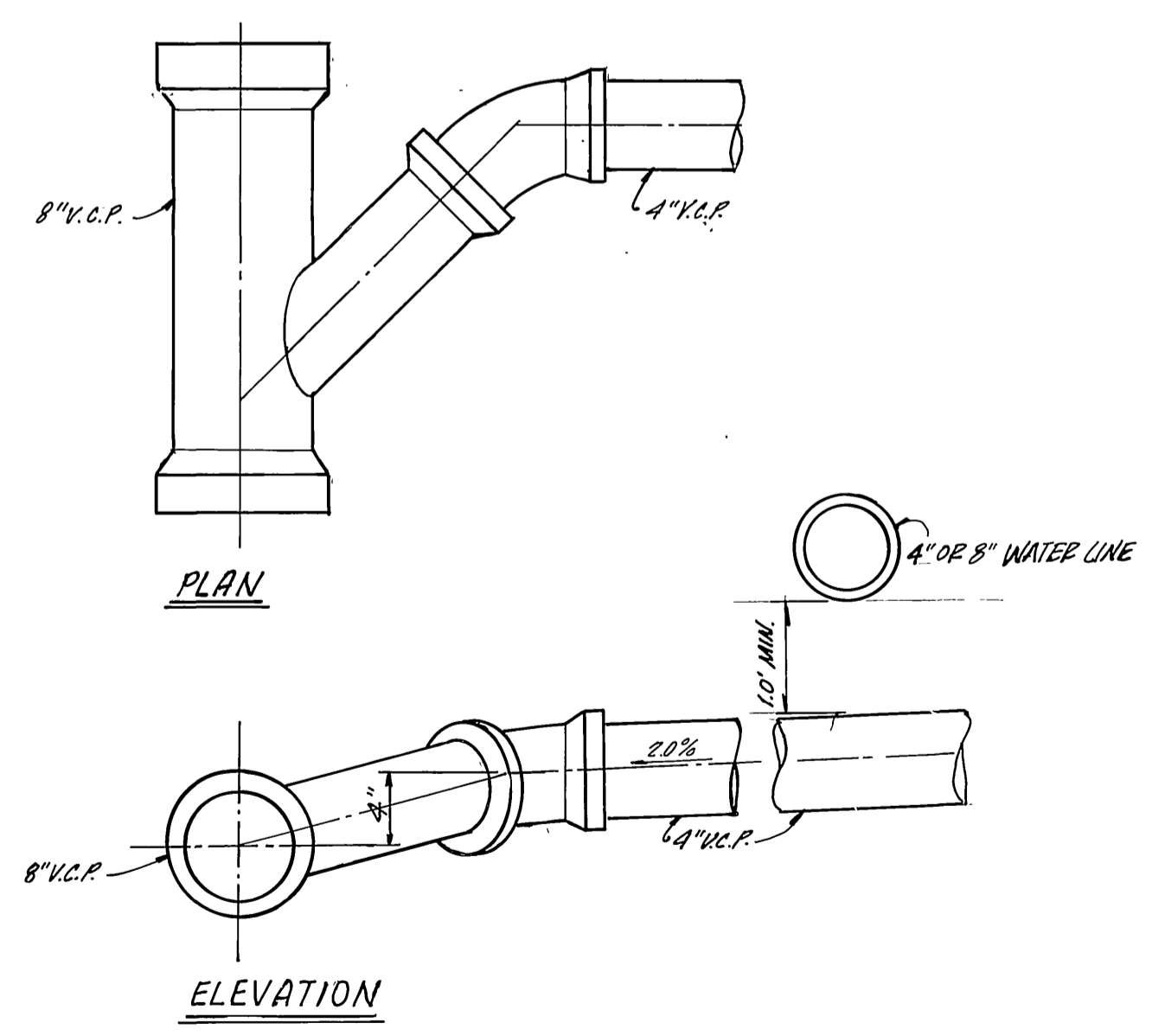


INDEX MAP
SCALE: 1" = 100'

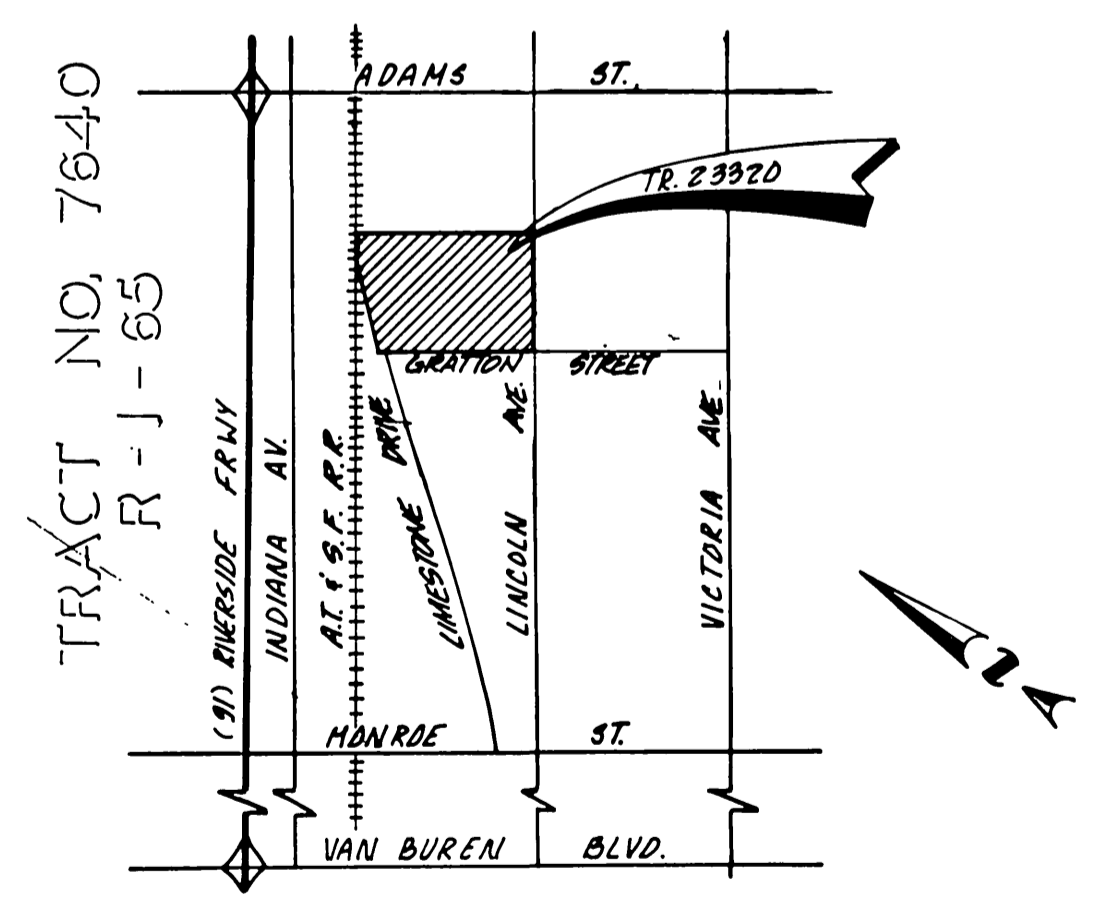
CONSTRUCTION NOTES AND ESTIMATED QUANTITIES

1. CONSTRUCT 8" V.C.P.	2,400 L.F.
2. CONSTRUCT MANHOLES PER CITY OF RIVERSIDE STD. DWG. NO. 500	11 EA.
3. CONSTRUCT 4" V.C.P. LATERALS PER CITY OF RIVERSIDE STD. DWG. NO. 562	2,300 L.F.
4. BARGE EXISTING 8" SEWER MAIN	7 EA.
5. REMOVE AND REPLACE EXISTING A.C. PAVEMENT	228 S.F.
6. REMOVE EXIST. 8" V.C.P. & REPLACE WITH 8" D.I.P. (SCH. 80)	20 L.F.

NOTE: QUANTITIES SHOWN HEREON ARE FOR INFORMATION PURPOSES ONLY, AND SHOULD NOT BE USED FOR BIDDING. CONTRACTOR IS RESPONSIBLE TO DETERMINE HIS OWN QUANTITIES AND TO BID A COMPLETE JOB.



* TYPICAL FLAT WYE DETAIL
N.T.S.
* USE REGULAR WYE CONNECTION FOR LOTS 15 THRU 19, 28 THRU 31, 35 THRU 49, 50 THRU 53 AND 60 THRU 66.



VICINITY MAP
N.T.S.

PRIVATE ENGINEER'S NOTICE TO CONTRACTORS

THE EXISTENCE AND LOCATION OF ANY UNDERGROUND UTILITIES OR STRUCTURES SHOWN ON THESE PLANS ARE OBTAINED BY A SEARCH OF AVAILABLE RECORDS AND TO THE BEST OF OUR KNOWLEDGE, THERE ARE NO EXISTING UTILITIES EXCEPT THOSE SHOWN ON THIS PLAN. THE CONTRACTOR IS REQUIRED TO TAKE ALL PRECAUTIONARY MEASURES TO PROTECT THE UTILITIES SHOWN, AND ANY OTHER LINES OR STRUCTURES NOT SHOWN ON THESE PLANS, AND IS RESPONSIBLE FOR THE PROTECTION OF, AND ANY DAMAGE TO THESE LINES OR STRUCTURES.

CONSTRUCTION CONTRACTOR AGREES THAT IN ACCORDANCE WITH GENERALLY ACCEPTED CONSTRUCTION PRACTICES, CONSTRUCTION CONTRACTOR WILL BE REQUIRED TO ASSUME SOLE AND COMPLETE RESPONSIBILITY FOR JOB SITE CONDITIONS DURING THE COURSE OF CONSTRUCTION OF THIS PROJECT, INCLUDING SAFETY OF ALL PERSONS AND PROPERTY; THAT THIS REQUIREMENT SHALL APPLY CONTINUOUSLY AND NOT BE LIMITED TO NORMAL WORKING HOURS, AND CONSTRUCTION CONTRACTOR FURTHER AGREES TO, DEFEND, INDEMNIFY, AND HOLD DESIGN PROFESSIONAL AND OWNER HARMLESS FROM ANY AND ALL LIABILITY, REAL OR ALLEGED, IN CONNECTION WITH THE PERFORMANCE OF WORK ON THIS PROJECT.

THE CONTRACTOR SHALL BE RESPONSIBLE TO REPORT DISCREPANCIES IN PLANS AND/OR FIELD CONDITIONS IMMEDIATELY TO THE DESIGN ENGINEER FOR RESOLUTION PRIOR TO CONSTRUCTION, AND SHALL BE RESPONSIBLE FOR DISCREPANCIES NOT SO REPORTED AND RESOLVED.

CITY OF RIVERSIDE
WATER DEPARTMENT
R. Mc Anath
APPROVED BY: DATE 10-31-88

BENCH MARK: FS-F
FOUND P.K. NAIL & CITY ENGINEER'S TAG IN CONC. CURB ON S.W. SIDE OF D.W. OF WLY SIDE OF ADAMS. 160'± N.W. OF VICTORIA AVE.
FIELD BOOK 739-79 ELEV. 896.317'

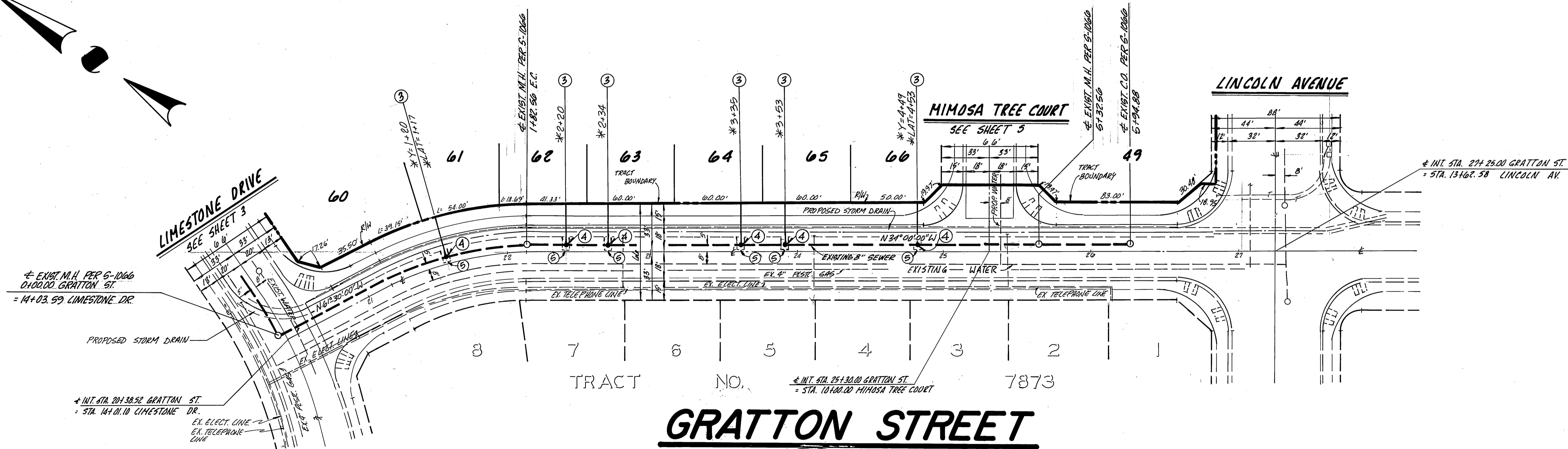
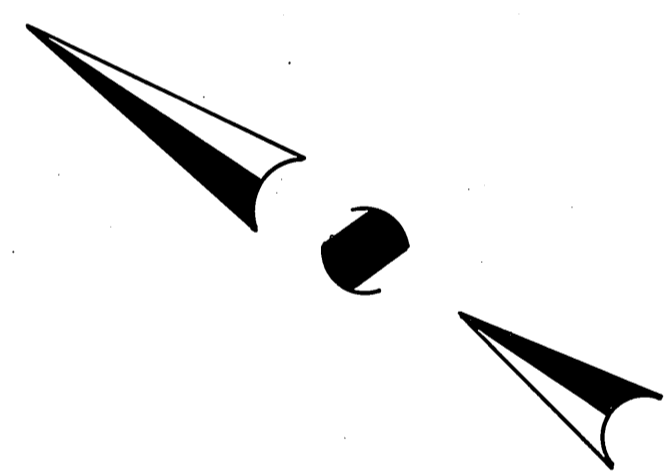
CSL ENGINEERING, INC.
119 MAPLE STREET SUITE N CORONA, CA 91720 (714) 737-8190
PREPARED UNDER THE SUPERVISION OF:
Richard A. Scianini 3-21-88
RICHARD A. SCIANNI R.C.E. 25917 DATE

MARK	REVISIONS	APPR. DATE
DESIGNED BY <i>Bill Sills</i>	DRAWN BY <i>SL FLS</i>	CHECKED BY <i>WILL DA</i>

CITY OF RIVERSIDE
PUBLIC WORKS DEPARTMENT
APPROVED BY: DATE BY
PRINCIPAL ENGINEER 11-15-88 *Barry Best*
PARK DEPARTMENT
TRAFFIC DIVISION
CHIEF P.W. ENGINEER 11-21-88 *WSP*
DATE 11/21/88

TITLE SHEET
SEWER IMPROVEMENT PLANS
FOR
TRACT 23320

ACCOUNT NO. 5-1517
SHEET 1 of 6

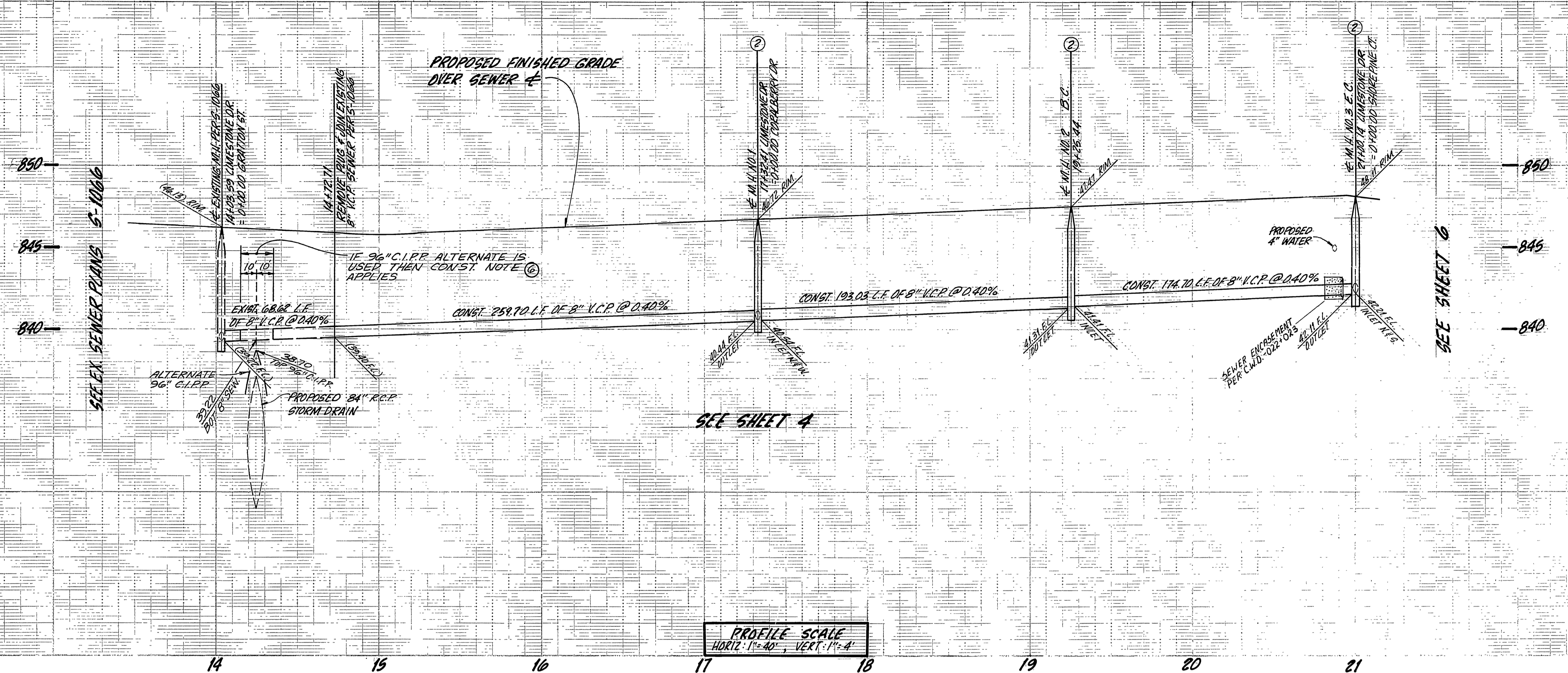


GRATTON STREET

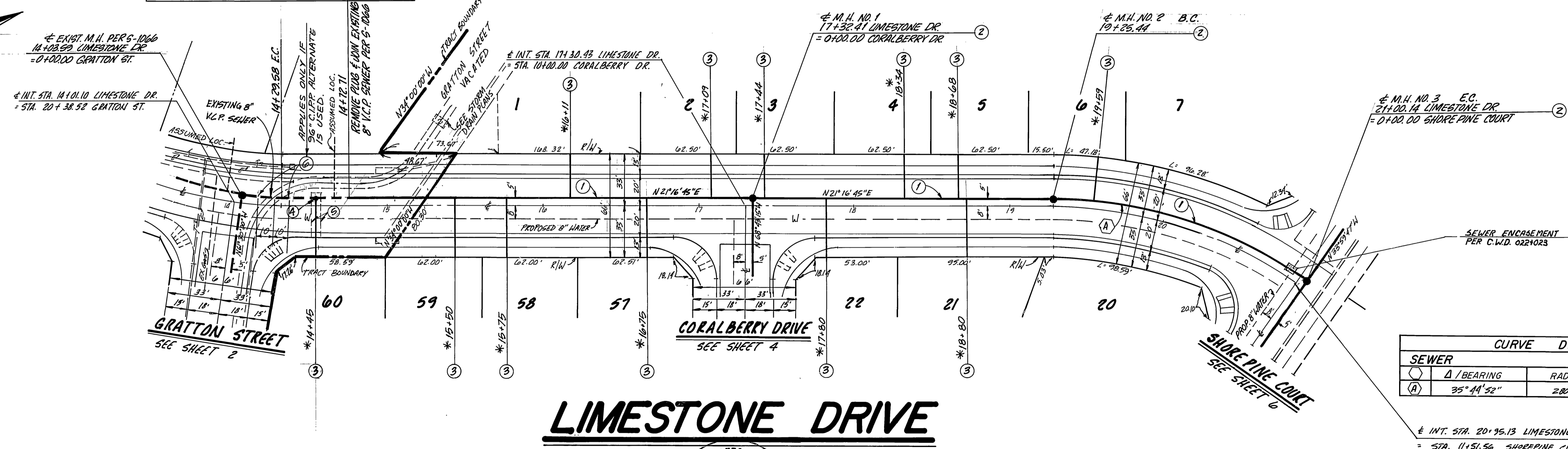


CITY OF RIVERSIDE WATER DEPARTMENT Approved by: <i>R. Mc Grath</i> DATE: 10-31-88	BENCH MARK: F5-F FOUND P.K. NAIL & CITY ENGINEERS TAG IN CONC. CURB ON SLY SIDE OF DWY OF WLY SIDE OF ADAMS. 150' ± NLY OF VICTORIA AVE. FIELD BOOK 733.79 ELEV. 876.317'	CSL ENGINEERING, INC. 119 MAPLE STREET SUITE N CORONA, CA 91720 (714) 737-8190 PREPARED UNDER THE SUPERVISION OF: <i>Richard A. Scanni</i> 3-21-88 RICHARD A. SCIANNI RCE 25917 DATE	CITY OF RIVERSIDE PUBLIC WORKS DEPARTMENT APPROVED BY: <i>Barry Bed</i> DATE: 11/21/88 PRINCIPAL ENGINEER PARK DEPARTMENT TRAFFIC DIVISION CHIEF P. W. ENGINEER	SEWER IMPROVEMENT FOR TRACT 23320 GRATTON STREET HORIZ. SCALE: 1" = 40' VERT. SCALE: 1" = 4'	ACCOUNT NO. S-1517 SHEET 2 OF 6

* AS BUILT 6-12-90 B.M.



NOTE: CONTRACTOR SHALL VERIFY IN THE FIELD IF EXISTING SEWER LATERALS INTERFERE WITH SEWER CONST. AND IF SO, THEN NOTIFY ENGINEER



SEWER CURVE DATA TABLE			
SEWER	Δ / BEARING	RADIUS	TANGENT LENGTH
(A)	95° 44' 52"	280.20'	90.30'
			174.70'

LIMESTONE DRIVE



CITY OF RIVERSIDE
WATER DEPARTMENT
APPROVED BY: *R. M. Smith* 10-31-88
DATE

BENCH MARK: F5-F
FOUND PER MAIL & CITY ENGINEERS TAG
IN CONC. CURB ON S.W. SIDE OF D.W.Y. OF
ADAMS. 150' ± N.24° OF VICTORIA AVE.
FIELD BOOK 739.79 ELEV. 876.317'

CSL ENGINEERING, INC.
119 MAPLE STREET SUITE N CORONA, CA 91720
(714) 737-8190
PREPARED UNDER THE SUPERVISION OF:
Richard A. Scianini 3/21/88
RICHARD A. SCIANNI R.C.E. 25917 DATE

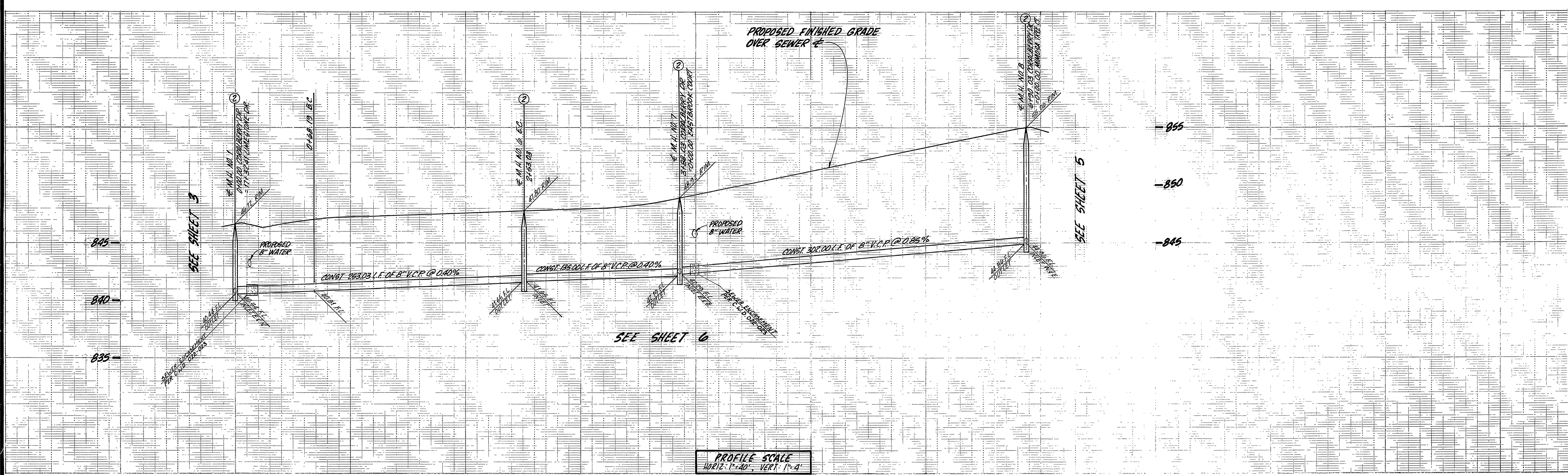
MARK REVISIONS APPR. DATE
DESIGNED BY: *KS* DRAWN BY: *KS & DS* CHECKED BY: *ALL*

CITY OF RIVERSIDE
PUBLIC WORKS DEPARTMENT
APPROVED BY: *Barry Bed*
DATE: 11/21/88
PRINCIPAL ENGINEER: *Barry Bed*
PARK DEPARTMENT: *Barry Bed*
TRAFFIC DIVISION: *Barry Bed*
CHIEF P.W. ENGINEER: *Barry Bed*

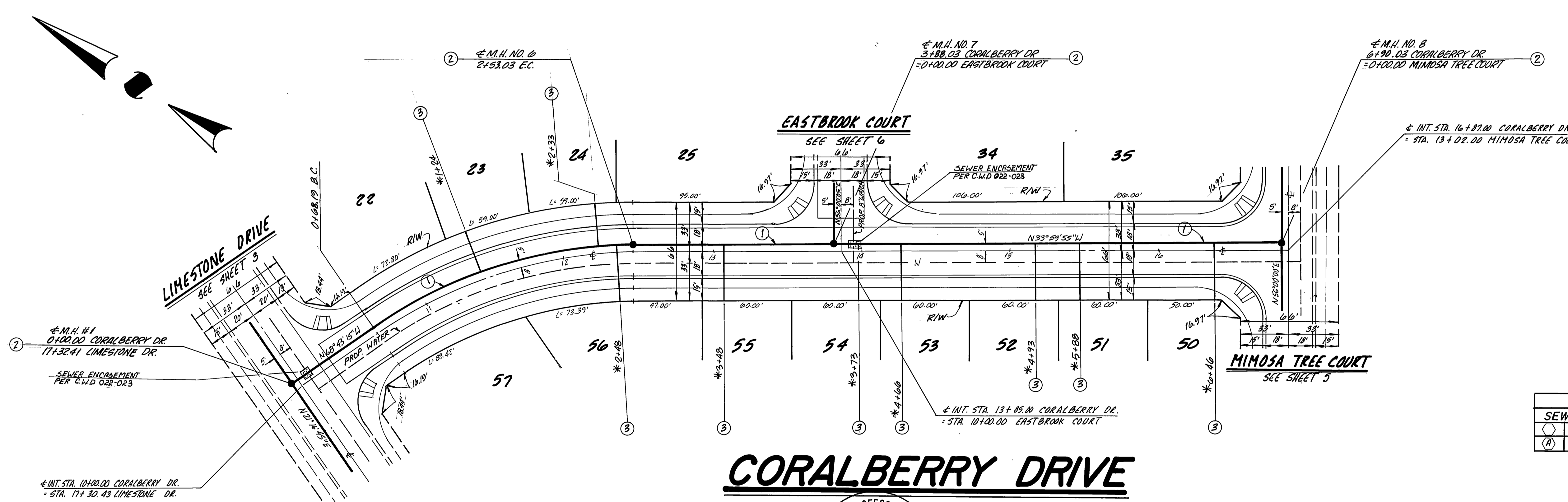
SEWER IMPROVEMENT PLANS
FOR
TRACT 23320
LIMESTONE DRIVE
HORIZ. SCALE: 1" = 40'
VERT. SCALE: 1" = 4'

ACCOUNT NO. 5-1517
SHEET 3 OF 6

*A9 BUILT 6-12-90 B.M.



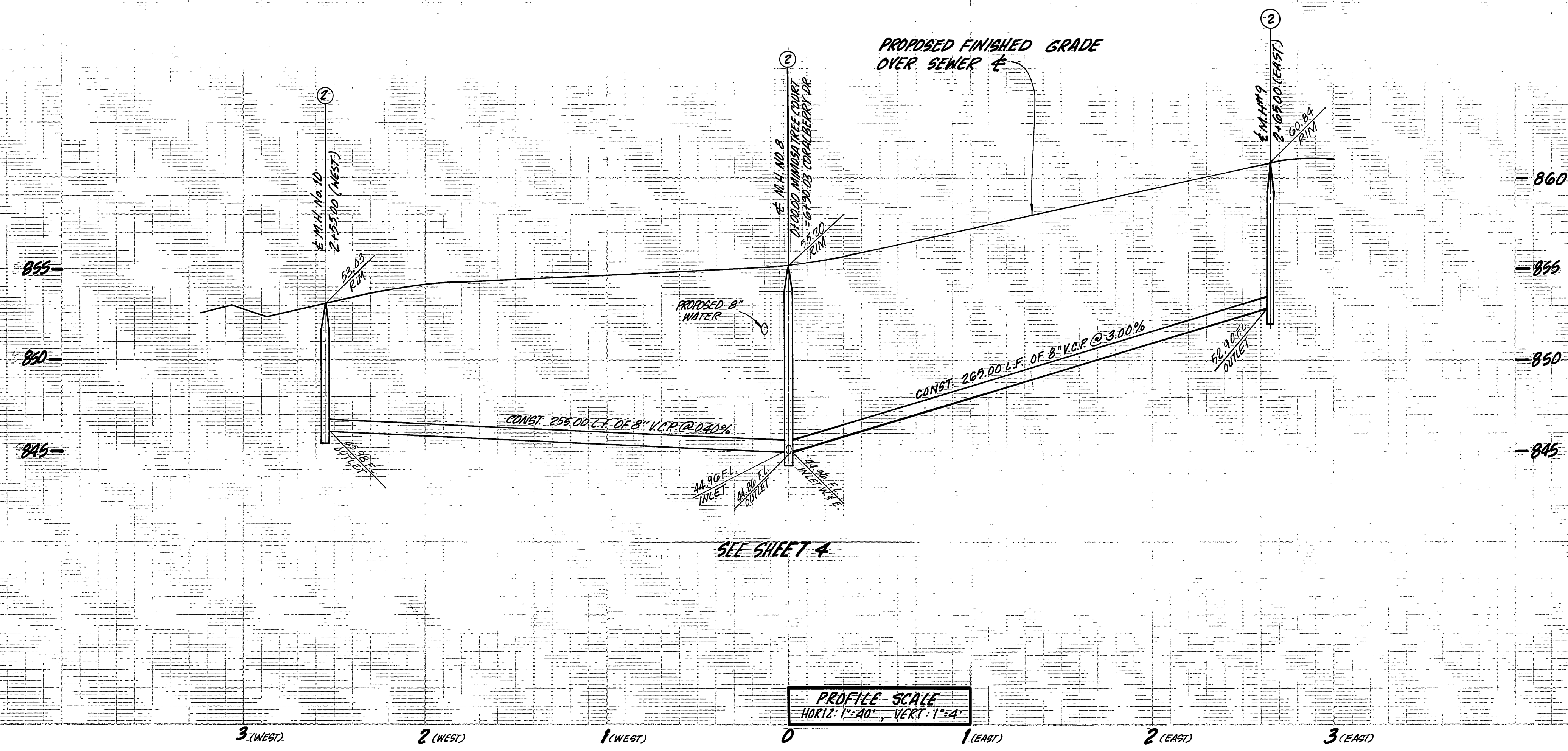
PROFILE SCALE
 HORIZ. 1"=40', VERT. 1"=4'



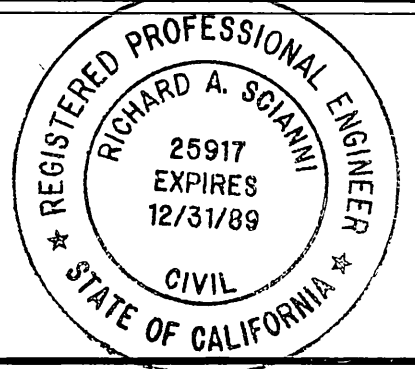
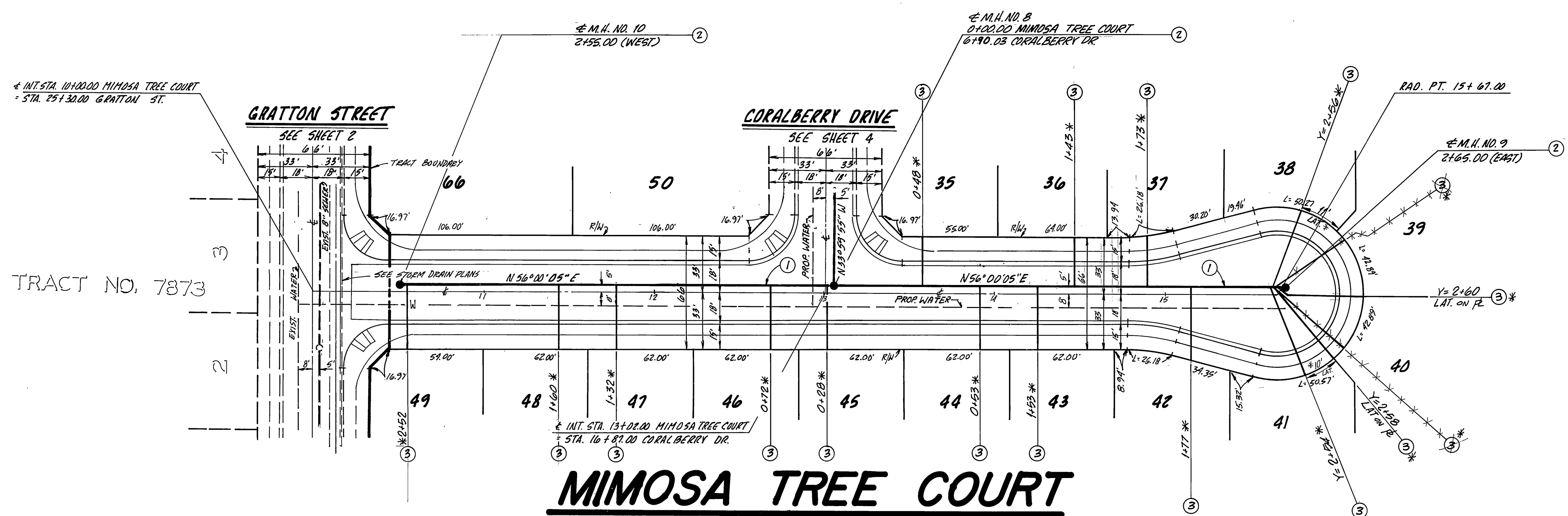
CURVE DATA TABLE				
SEWER	Δ / BEARING	RADIUS	TANGENT	LENGTH
(A)	34°43'20"	305.00'	75.35'	104.04'



CITY OF RIVERSIDE WATER DEPARTMENT APPROVED BY: <i>R. M. Smith</i> DATE: 10-31-88	BENCH MARK: F5-F FOUND P.K. NAIL & CITY ENGINEER'S TAG IN CONC. CURB ON SLY SIDE OF DLY. OF WLY SIDE OF ADAMS. 150'-S NLY OF VICTORIA AVE. FIELD BOOK 739-79 ELEV. 896.317'	CSL ENGINEERING, INC. 119 MAPLE STREET SUITE N CORONA, CA 91720 (714) 737-8190 PREPARED UNDER THE SUPERVISION OF: <i>Richard A. Scanni</i> 3-21-88 RICHARD A. SCIANNI R.C.E. 25917 DATE	CITY OF RIVERSIDE PUBLIC WORKS DEPARTMENT APPROVED BY: <i>Barry Bed</i> PUBLIC WORKS DIRECTOR DATE: 11/21/88	SEWER IMPROVEMENT PLANS TRACT 23320 CORALBERRY DRIVE	ACCOUNT NO. 5-1517 SHEET 4 OF 6
				HORIZ. SCALE: 1"=40' VERT. SCALE: 1"=4' INDEXED 1-5-89 JH	*AS BUILT 6-12-90 B.M.*

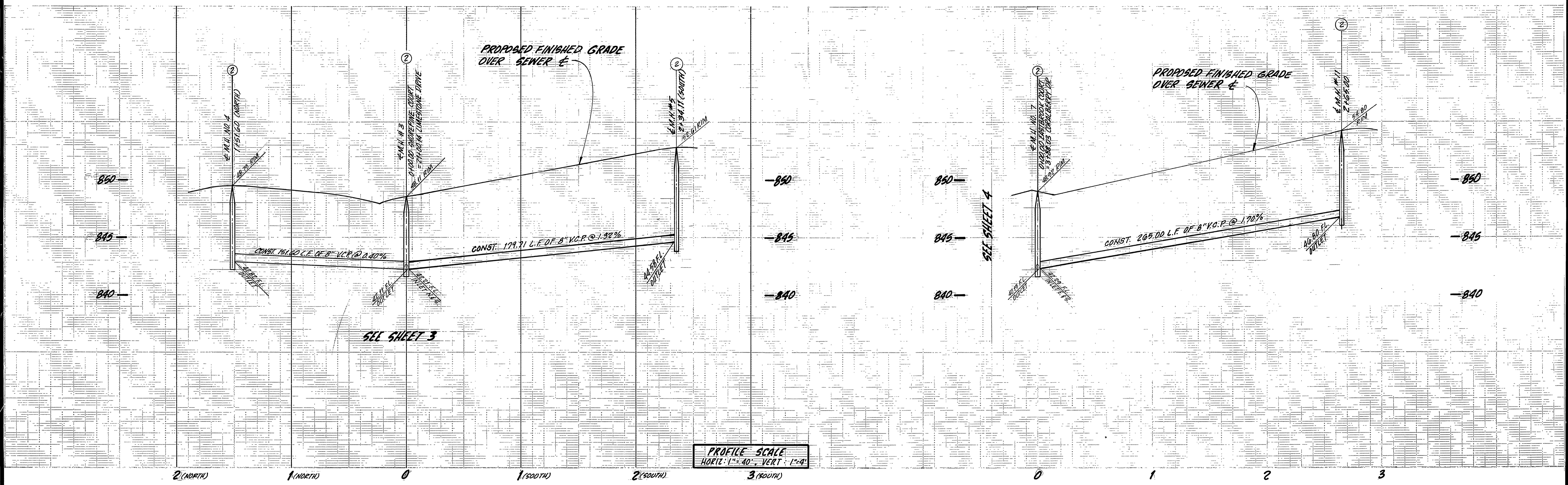


PROFILE SCALE
 HORIZ: 1"=40' VERT: 1"=4'

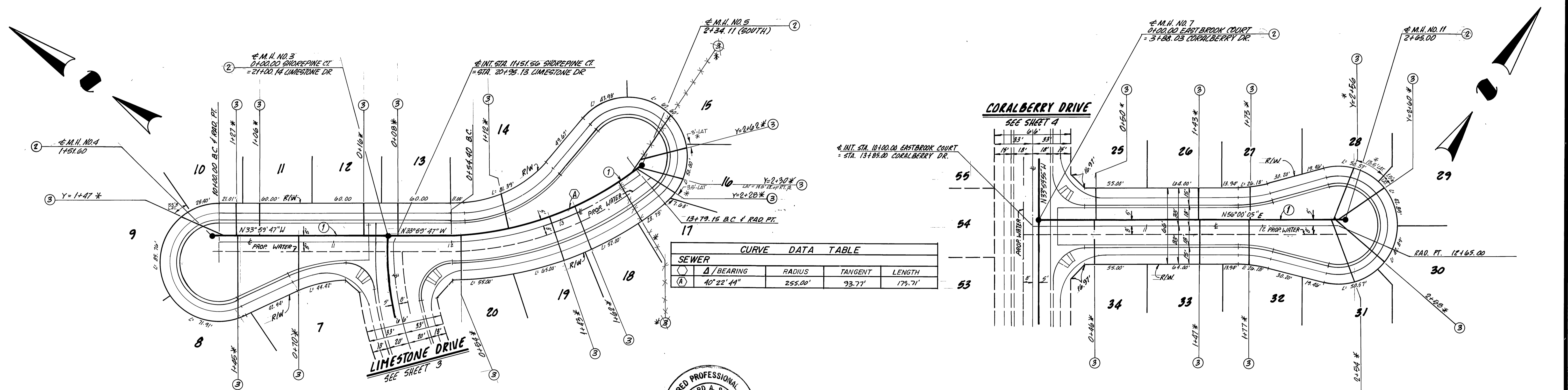


CITY OF RIVERSIDE WATER DEPARTMENT Approved By: <i>Richard Mc Anath</i> DATE: 11-2-88	BENCH MARK: FOUND PK. NAIL & CITY ENGINEERS TAG IN CONC. CURB ON S'LY SIDE OF DWY, OF N'LY SIDE OF ADAMS. 150'± N'LY OF VICTORIA AVE FIELD BOOK 739-79 ELEV. 896.317	CSL ENGINEERING, INC. 119 MAPLE STREET SUITE "N" CORONA, CA 91720 (714) 737-8190 PREPARED UNDER THE SUPERVISION OF: <i>Richard A. Scanni</i> 3/21/88 RICHARD A. SCIANNI R.C.E. 25917 DATE	CITY OF RIVERSIDE PUBLIC WORKS DEPARTMENT APPROVED BY: <i>Bruce Bed</i> DATE: 11-15-88 PRINCIPAL ENGINEER PARK DEPARTMENT TRAFFIC DIVISION CHIEF P.W. ENGINEER DATE: 11/21/88	SEWER IMPROVEMENT PLANS TRACT 23320 MIMOSA TREE COURT HORIZ. SCALE: 1" = 40' VERT. SCALE: 1" = 4'	ACCOUNT NO. 5-1517
					SHEET 5 OF 6

* AS BUILT 6-12-90 B.M.4



PROFILE SCALE
 HORIZ. 1" = 40' VERT. 1" = 4'



SHOREPINE COURT

EASTBROOK COURT



CITY OF RIVERSIDE
 WATER DEPARTMENT
 APPROVED BY: *R. Mc Grath* DATE: 10-31-88

BENCH MARK: F5-F FOUND P.K. NAIL & CITY ENGINEERS TAG IN CONC. CURB ON S'LY SIDE OF DWY. OF W'LY SIDE OF ADAMS. 150' ± N'LY OF VICTORIA AVE. FIELD BOOK 737-79 ELEV. 876.317'

CSL ENGINEERING, INC.
 119 MAPLE STREET SUITE "N" CORONA, CA 91720 (714) 737-8190
 PREPARED UNDER THE SUPERVISION OF:
Richard A. Scanni 3/21/88
 RICHARD A. SCIANNI R.C.E. 25917 DATE

MARK REVISIONS APPR. DATE
 DESIGNED BY: *V.S.* DRAWN BY: *V.S. & D.S.* CHECKED BY: *V.L.L.*

CITY OF RIVERSIDE
 PUBLIC WORKS DEPARTMENT
 APPROVED BY: DATE: 11-15-88 BY: *Garry Ben*
 PRINCIPAL ENGINEER
 P.W.K. DIVISION
 TRAFFIC DIVISION
 CHIEF P.W. ENGINEER
 DATE: 11/21/88

SEWER IMPROVEMENT FOR
 TRACT 23320
 SHOREPINE COURT
 EASTBROOK COURT

PLANS ACCOUNT NO.
 5-1517
 SHEET 6 OF 6

*AS BUILT 6-12-90 B.M.C.