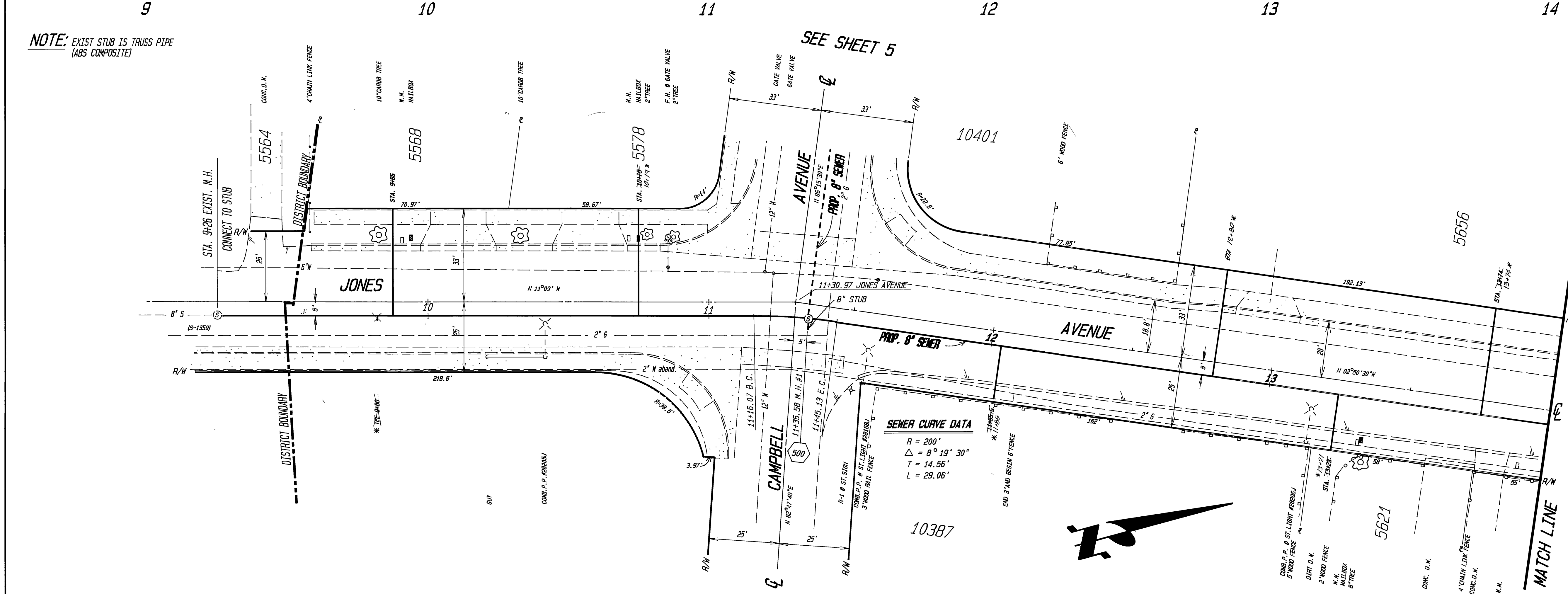


NOTE: EXIST STUB IS TRUSS PIPE (ABS COMPOSITE)

GENERAL NOTES

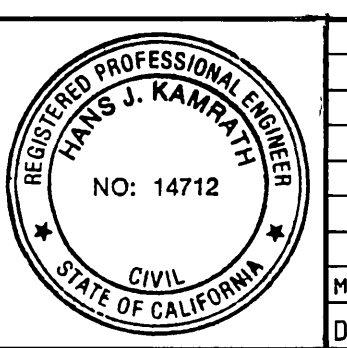
- CONSTRUCTION SHALL BE IN ACCORDANCE WITH THE CITY OF RIVERSIDE, DEPT. OF PUBLIC WORKS STANDARD DRAWINGS AND PER STANDARD SPECIFICATIONS FOR PUBLIC WORKS CONSTRUCTION, 1988 EDITION.
- IT IS OPTIONAL FOR THE CONTRACTOR TO USE ANY PLASTIC PIPE THAT IS DESCRIBED IN THE STANDARD SPECIFICATION IN LIEU OF V.C.P., EXCEPT THAT ALL PIPE BETWEEN ROBINSON AVENUE AND M.H. #4 MUST BE V.C.P., AND ALL PIPE BETWEEN STA 9+26 AND M.H. #1 ABS COMPOSITE (TRUSS PIPE)
- WHERE NO STATION IS GIVEN FOR HOUSE CONNECTION LOCATE IT AT LOWER END OF LOT AS SHOWN OR AS DIRECTED BY PROPERTY OWNER.



CONSTRUCTION NOTES

- THE FOLLOWING STD. DWG'S. APPLY FOR THIS PROJECT:
- 452 CONSTRUCT PIPE BEDDING PER CITY OF RIVERSIDE STD. DWG. NO. 452 CASE 1.
 - 453 CONSTRUCT TRENCH BACKFILL PER CITY OF RIVERSIDE STD. DWG. NO. 453.
 - 500 CONSTRUCT PRECAST CONCRETE MANHOLE PER CITY OF RIVERSIDE STD. DWG. NO. 500.
 - 562 CONSTRUCT V.C.P. SEWER LATERAL PER CITY OF RIVERSIDE STD. DWG. NO. 562

ENGINEER IN RESPONSIBLE CHARGE
HANS J. KAMRATH
 R.C.E. 14712 EXPIRES 3/31/89
 DATE 9/18/1989



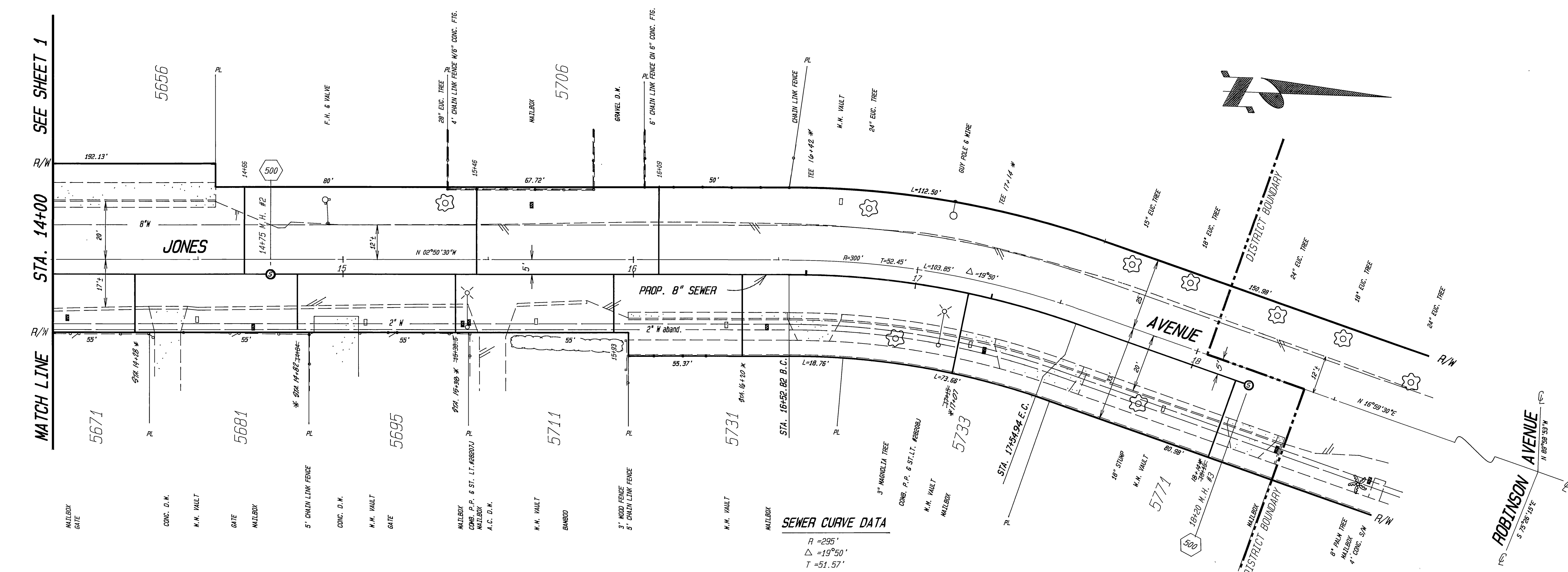
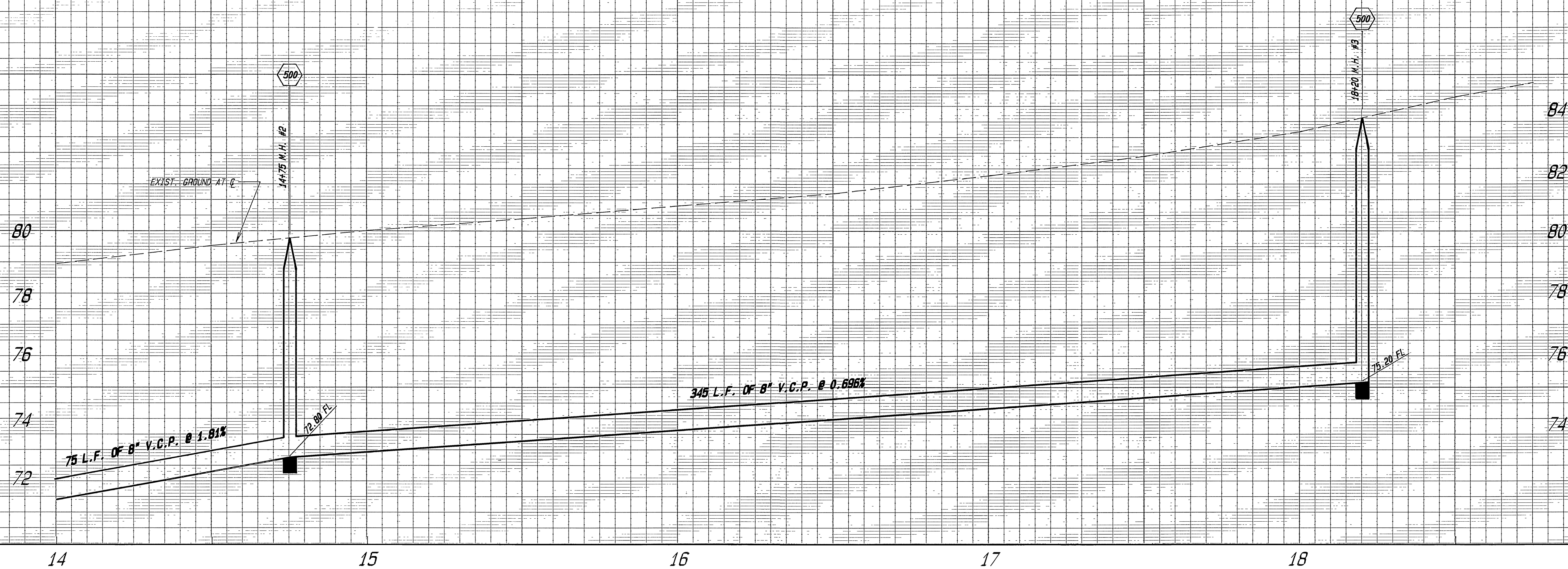
CITY OF RIVERSIDE
 PUBLIC WORKS DEPARTMENT

APPROVED BY	DATE	APPROVED BY	DATE
DEPUTY P.W. ENGINEER	7-23-89	<i>[Signature]</i>	9/29/89
PRINCIPAL ENGINEER	9-23-89		
SURVEYOR	9/18/89		
CHIEF P.W. INSPECTOR	9/21/89		
TRAFFIC DIVISION			
PARK & RECREATION			

PLAN and PROFILE
JONES AVENUE
ASSESSMENT DISTRICT #2
 200' S'LY Campbell Ave. South Of Cypress Ave.

ACCOUNT NO. 84-451-683
S-1519
 SHEET 1 OF 5

HORIZ. SCALE: 1" = 20' VERT. SCALE: 1" = 2'
 INDEXED 1-10-90 LHM

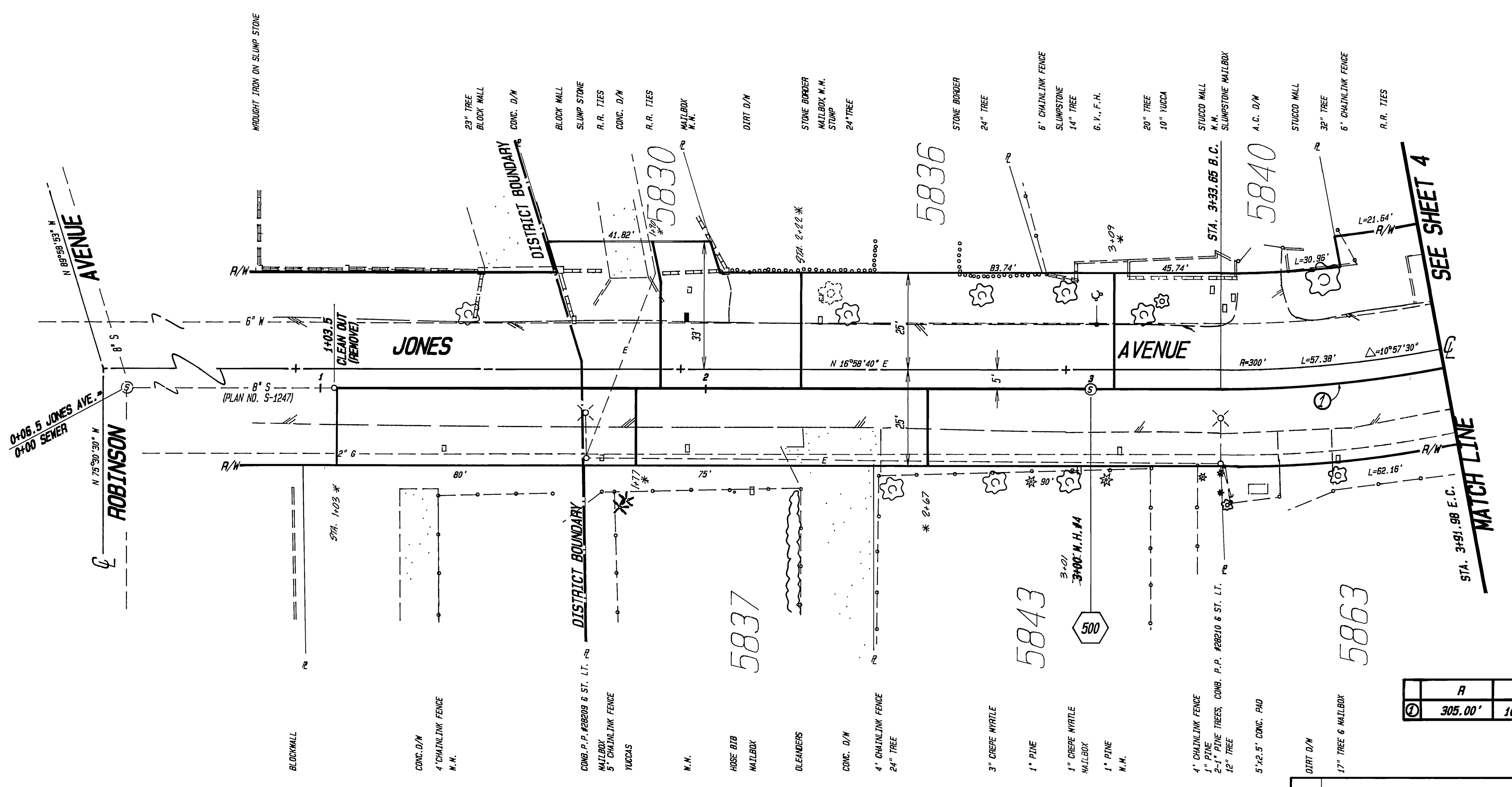


SEWER CURVE DATA
 R = 255'
 Δ = 19°50'
 T = 51.57'
 L = 102.12'

CITY OF RIVERSIDE PUBLIC WORKS DEPARTMENT				PLAN AND PROFILE JONES AVENUE ASSESSMENT DISTRICT #2 200' S'LY CAMPBELL AVE. TO SOUTH OF CYPRESS AVE.		ACCOUNT NO. 84-451-563 S-1519
				APPROVED BY: <i>[Signature]</i> DEPUTY P. V. ENGINEER DATE: 9/22/89		APPROVED BY: <i>[Signature]</i> PUBLIC WORKS DIRECTOR DATE: 9/22/89
DESIGNED BY: <i>[Signature]</i> DRAWN BY: J.L.L. CHECKED BY:	REVISIONS:	APPR. DATE:	DATE: 9/22/89	HORIZ. SCALE: 1" = 20' VERT. SCALE: 1" = 2' INDEXED 1-18-90 LFH		

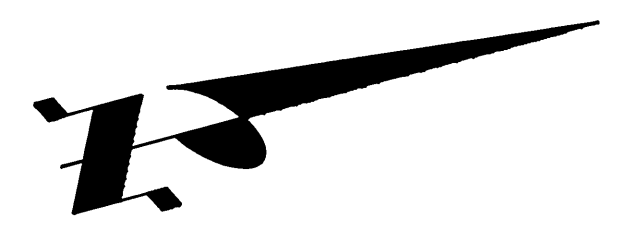


NOTE:
CONTRACTOR SHALL REMOVE EXIST. CLEANOUT AND THEN ALLOW THE SURVEY CREW TO VERIFY THE FLOWLINE PRIOR TO ANY OTHER WORK.



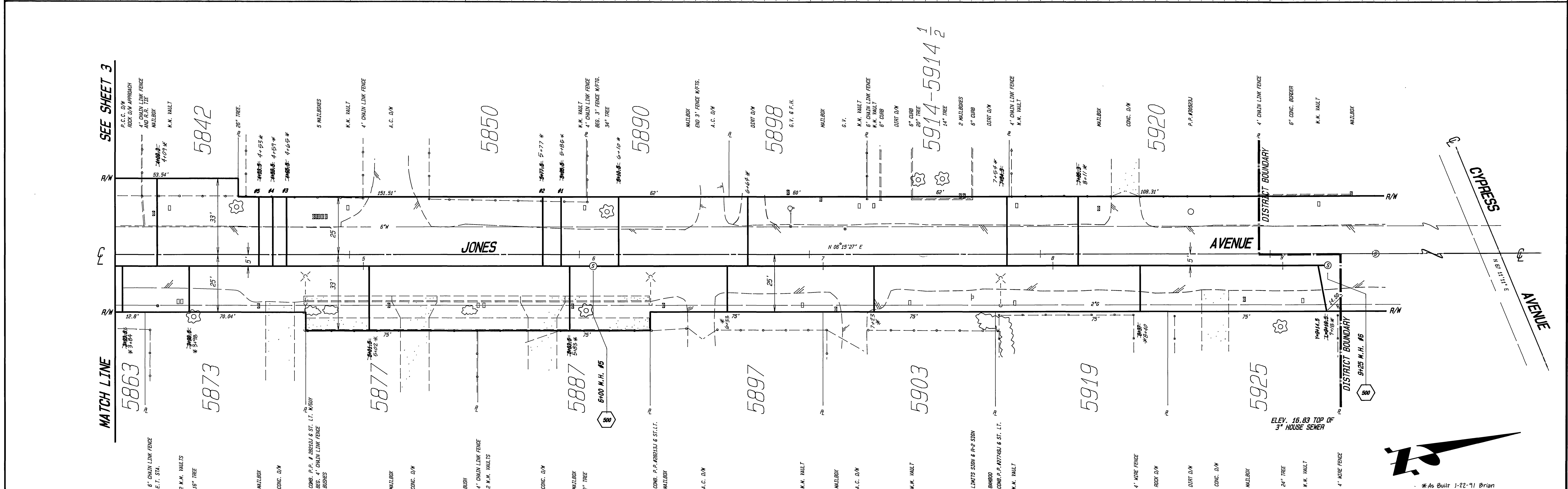
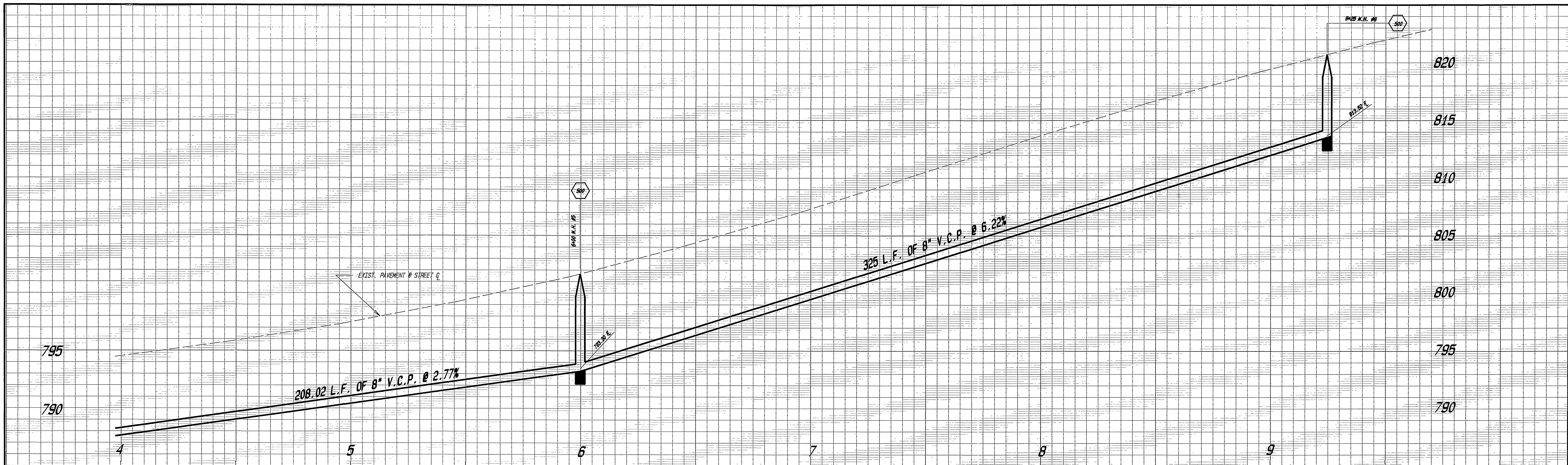
CURVE DATA

R	Δ	L	T
305.00'	10°57'30"	58.33'	29.26'



* As Built 1-22-91 Brian

CITY OF RIVERSIDE PUBLIC WORKS DEPARTMENT		PLAN and PROFILE JONES AVENUE ASSESSMENT DISTRICT #2 200' S'LY Campbell Ave. South Of Cypress Ave.		ACCOUNT NO. 84-451-653 S-1519 SHEET <u>3</u> OF <u>5</u>
APPROVED BY: [Signature] DEPUTY P.W. ENGINEER DATE: 9/25/99	APPROVED BY: [Signature] PUBLIC WORKS DIRECTOR DATE: 9/29/99	DESIGNED BY: [Signature] DRAWN BY: [Signature] CHECKED BY: [Signature]	TRAFFIC DIVISION PARK & RECREATION	INDEXED 1-18-90 JH



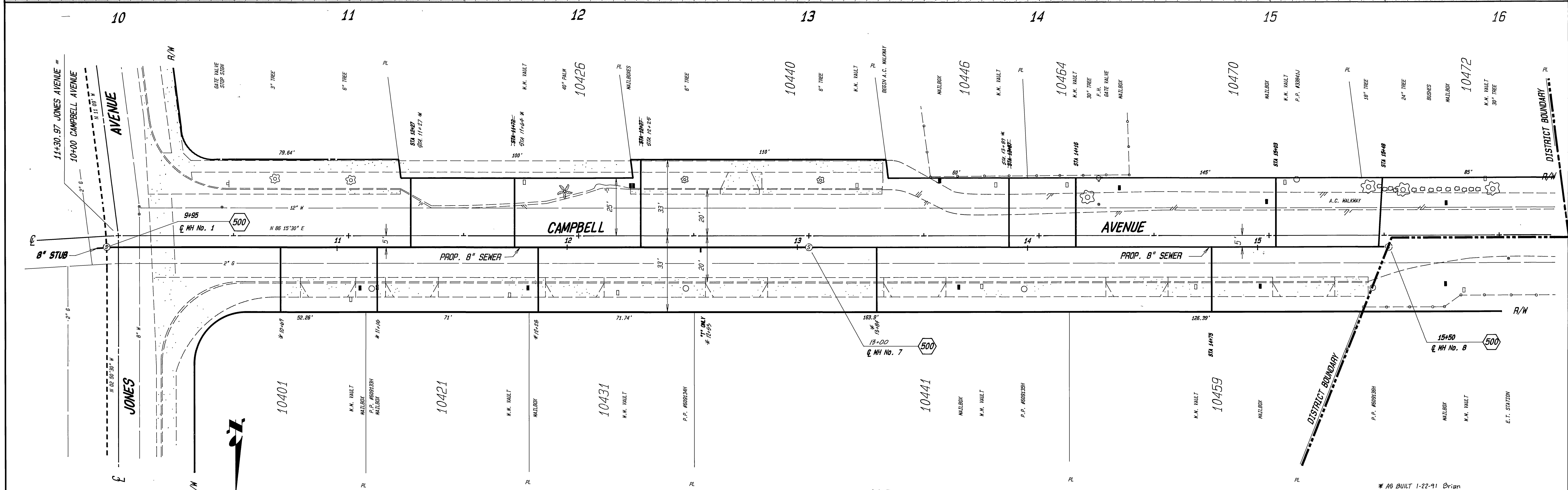
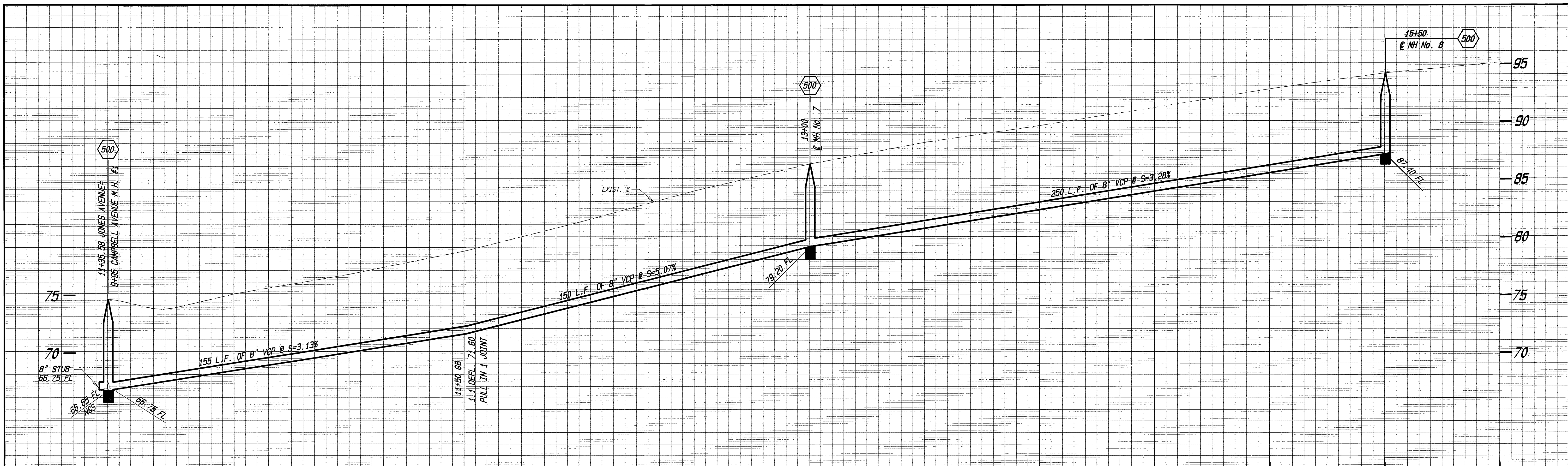
SEE SHEET 3

MATCH LINE

CYPRESS AVENUE

JONES AVENUE

CITY OF RIVERSIDE PUBLIC WORKS DEPARTMENT		PLAN and PROFILE JONES AVENUE ASSESSMENT DISTRICT #2 200' S'LY Campbell Ave, South Of Cypress Ave.		ACCOUNT NO. 04-451-003 S-1519 SHEET 4 OF 5
APPROVED BY DEPUTY P. M. ENGINEER PRINCIPAL ENGINEER SURVEYOR CHIEF P. M. INSPECTOR TRAFFIC DIVISION PARK & RECREATION	DATE 7-25-89 9/19/89 9/21/89	APPROVED BY <i>Brian</i> PUBLIC WORKS DIRECTOR	DATE 9/29/89	HORIZ. SCALE: 1"=20' VERT. SCALE: 1"=4' *As Built 1-22-91 Brian
DESIGNED BY <i>J.L.L.</i> DRAWN BY <i>J.L.L.</i> CHECKED BY	REVISIONS APPR. DATE	INDEXED 1-18-90 JH		



CITY OF RIVERSIDE PUBLIC WORKS DEPARTMENT		PLAN and PROFILE		ACCOUNT NO. 84-651-663
		JONES AVENUE ASSESSMENT DISTRICT #2 200' S'LY Campbell Ave. South Of Cypress Ave.		S-1519 SHEET 5 OF 5
APPROVED BY DEPUTY P. U. ENGINEER PRINCIPAL ENGINEER SURVEYOR	DATE 5-23-89 7-25-89 9/12/89	APPROVED BY <i>Bay Ford</i> PUBLIC WORKS DIRECTOR	HORIZ. SCALE: 1" = 20' VERT. SCALE: 1" = 4'	
DESIGNED BY <i>W.M.</i> DRAWN BY <i>T.L.L.</i> CHECKED BY	REVISIONS APPR. DATE	CHIEF P. U. INSPECTOR TRAFFIC DIVISION PARK & RECREATION	DATE 9/29/89	* AS BUILT 1-22-91 Brian