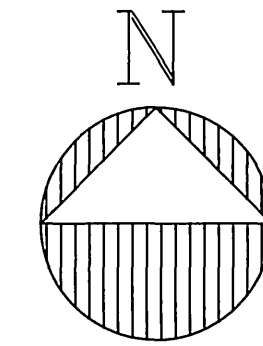
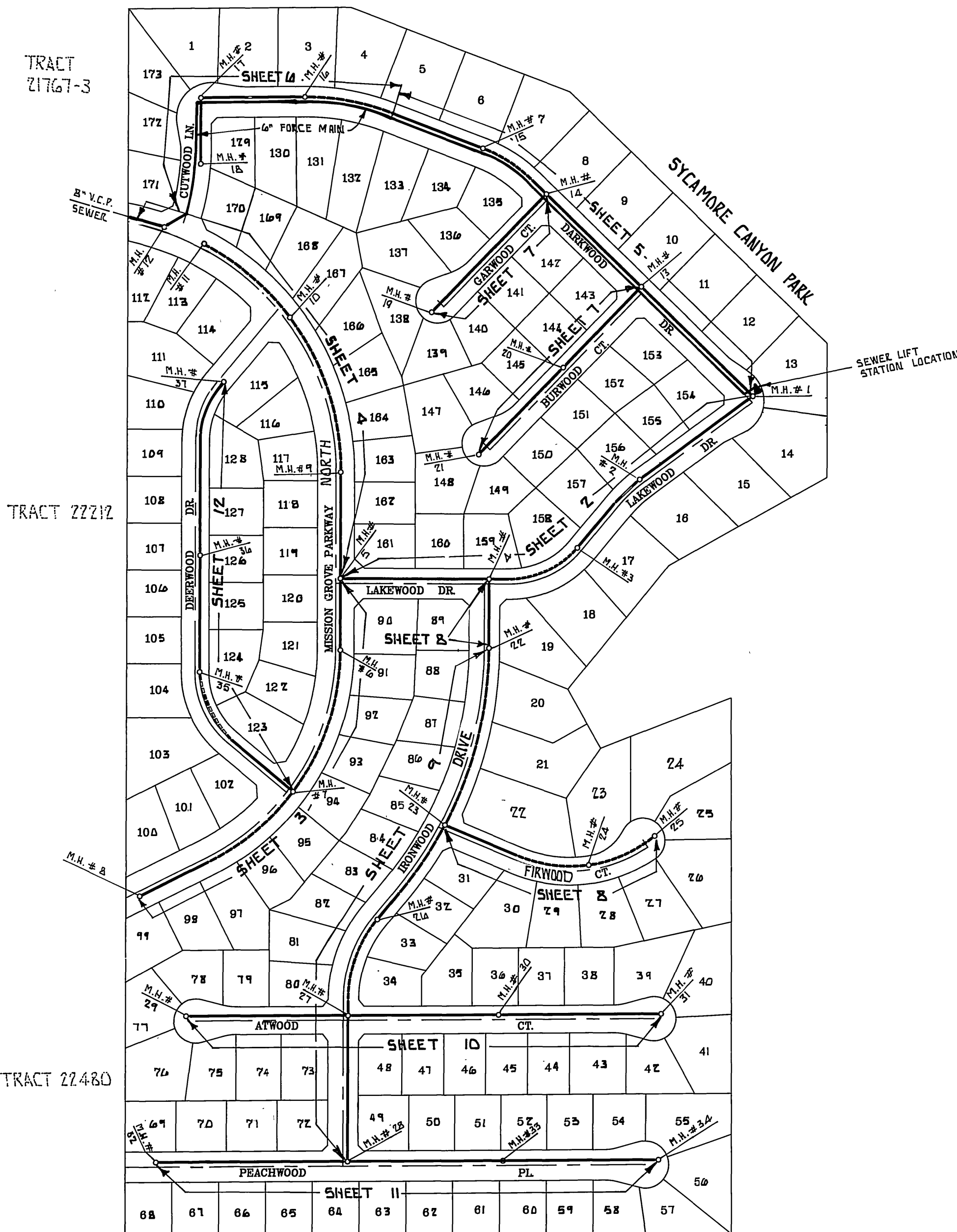


GENERAL NOTES:

- 1- THE PRIVATE ENGINEER SIGNING THESE PLANS IS RESPONSIBLE FOR THE ACCURACY AND ACCEPTABILITY OF THE WORK HEREON. IN THE EVENT OF DISCREPANCIES ARISING DURING CONSTRUCTION THE PRIVATE ENGINEER SIGNING THE PLANS SHALL BE RESPONSIBLE FOR DETERMINING AN ACCEPTABLE SOLUTION AND REVISING THE PLANS FOR APPROVAL BY THE CITY.
- 2- IT SHALL BE THE RESPONSIBILITY OF THE CONTRACTOR TO CLEAR THE RIGHT-OF-WAY IN ACCORDANCE WITH THE PROVISIONS OF LAW AS IT AFFECTS EACH UTILITY INCLUDING IRRIGATION LINES AND APPURTENANCES AND AT NO COST TO THE CITY.
- 3- CONSTRUCTION SHALL BE IN ACCORDANCE WITH THE CITY OF RIVERSIDE DEPARTMENT OF PUBLIC WORKS, STANDARD DRAWINGS, STANDARD DRAWING NO. 10 AND THE STANDARD SPECIFICATIONS FOR PUBLIC WORKS CONSTRUCTION, CURRENT EDITION.
- 4- LOCATION OF LATERALS TO BE DETERMINED IN THE FIELD AT THE DIRECTION OF THE OWNER. AVOID CONFLICT WITH PROPOSED AND/OR EXISTING FACILITIES.
- 5- CONTRACTOR IS TO VERIFY EXISTING SEWER ELEVATION PRIOR TO CONSTRUCTION.
- 6- THE SEWER CONTRACTOR SHALL ADJUST MANHOLES TO FINAL GRADE AFTER PAVING IS COMPLETED.
- 7- NO FINISHED FLOOR ELEVATION SHALL BE LESS THAN 4' ABOVE THE SEWER FLOW LINE AT THE POINT OF CONNECTION WITHOUT HAVING A PROPER BACKWATER VALVE INSTALLED IN THE LATERAL.
- 8- A PLUG SHALL BE INSTALLED AND WILL REMAIN IN PLACE WHERE THE NEW SEWER CONNECTS WITH THE EXISTING SEWER UNTIL THE NEW SEWER IS ACCEPTED BY THE CITY OF RIVERSIDE.
- 9- ALL MANHOLES TO BE RIVERSIDE CITY STD. NO. 500.
- 10- ALL FLAGGED ELEVATIONS SHALL BE STAKED IN THE FIELD BY PRIVATE ENGINEER.
- 11- THE CONTRACTOR SHALL CALL IN A LOCATION REQUEST TO UNDERGROUND SERVICE ALERT (USA), PHONE NO. 1-800-422-4133, TWO WORKING DAYS BEFORE DIGGING. NO CONSTRUCTION PERMIT WILL BE ISSUED BY THE PUBLIC WORKS DEPARTMENT INVOLVING EXCAVATION FOR UNDERGROUND FACILITIES UNLESS THE APPLICANT HAS BEEN PROVIDED AN INQUIRY IDENTIFICATION NUMBER BY U.S.A.
- 12- THE DEVELOPER SHALL BE RESPONSIBLE FOR THE PRESERVING OR ESTABLISHING AND REFERENCING SURVEY MONUMENTS DESTROYED, DISTURBED OR BURIED AS A RESULT OF CONSTRUCTION SHOWN HEREON.

SEWER IMPROVEMENT PLANS

FOR TRACT 21631



PRIVATE ENGINEER'S NOTICE TO CONTRACTOR:

THE EXISTENCE AND LOCATION OF ANY UNDERGROUND UTILITIES OR STRUCTURES SHOWN ON THESE PLANS ARE OBTAINED BY A SEARCH OF AVAILABLE RECORDS AND TO THE BEST OF OUR KNOWLEDGE, THERE ARE NO EXISTING UTILITIES EXCEPT THOSE SHOWN ON THIS PLAN. THE CONTRACTOR IS REQUIRED TO TAKE ALL PRECAUTIONARY MEASURES TO PROTECT THE UTILITIES SHOWN, AND ANY OTHER LINES OR STRUCTURES NOT SHOWN ON THESE PLANS, AND IS RESPONSIBLE FOR THE PROTECTION OF, AND ANY DAMAGE TO THESE LINES OR STRUCTURES.

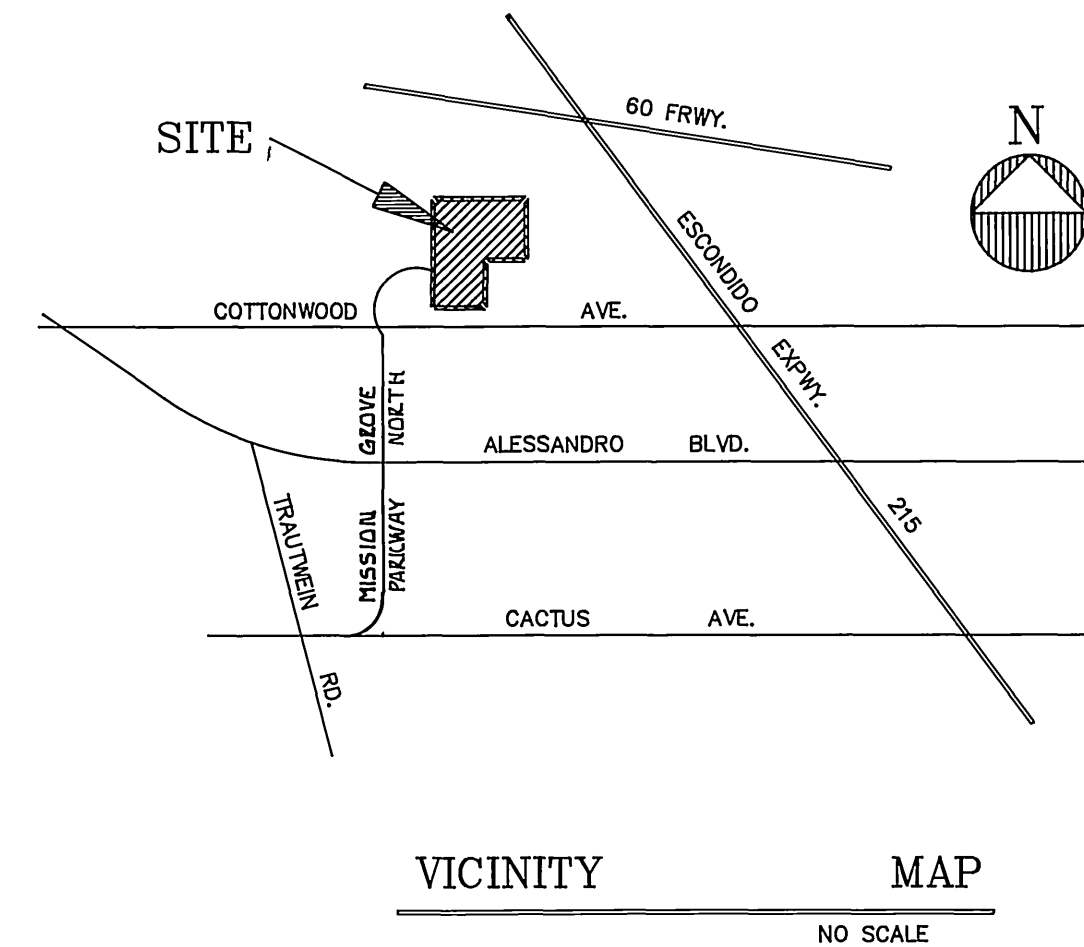
CONSTRUCTION CONTRACTOR AGREES THAT IN ACCORDANCE WITH GENERALLY ACCEPTED CONSTRUCTION PRACTICES, CONSTRUCTION CONTRACTOR WILL BE REQUIRED TO ASSUME SOLE AND COMPLETE RESPONSIBILITY FOR JOB SITE CONDITIONS DURING THE COURSE OF CONSTRUCTION OF THIS PROJECT, INCLUDING SAFETY OF ALL PERSONS AND PROPERTY; THAT THIS REQUIREMENT SHALL APPLY CONTINUOUSLY AND NOT BE LIMITED TO NORMAL WORKING HOURS, AND CONSTRUCTION CONTRACTOR FURTHER AGREES TO DEFEND, INDEMNIFY, AND HOLD DESIGN PROFESSIONAL AND OWNER HARMLESS FROM ANY AND ALL LIABILITY, REAL OR ALLEGED, IN CONNECTION WITH THE PERFORMANCE OF WORK ON THIS PROJECT.

THE CONTRACTOR SHALL BE RESPONSIBLE TO REPORT DISCREPANCIES IN PLANS AND/OR FIELD CONDITIONS IMMEDIATELY TO THE DESIGN ENGINEER FOR RESOLUTION PRIOR TO CONSTRUCTION, AND SHALL BE RESPONSIBLE FOR DISCREPANCIES NOT SO REPORTED AND RESOLVED.

CONSTRUCTION NOTES AND QUANTITY ESTIMATE:

- 1- CONSTRUCT 8" V.C.P. _____ 9873 L.F.
- 2- CONSTRUCT MANHOLES PER CITY OF RIVERSIDE STD. DWG. NO. 500 _____ 34 E.A.
- 3- CONSTRUCT 4" V.C.P. LATERALS PER CITY OF RIVERSIDE STD. DWG. NO. 562 _____ 5109 L.F.
- 4- REMOVE, CLEAN OUT AND JOIN _____ 1 E.A.
- 5- SEWER PUMP STATION (SEE SHEET 13) _____ 1 E.A.
- 6- CONSTRUCT 6" P.V.C. (SCH 80) FORCE MAIN _____ 1123 L.F.
- 7- 22 1/2 BEND (SCH. 80) AND THRUST BLOCK (CWD-030) _____ 2 E.A.
- 8- 45° BEND (SCH. 80) AND THRUST BLOCK (CWD-030) _____ 3 E.A.

NOTE: QUANTITIES SHOWN HEREON ARE FOR PERMIT AND/OR BONDING PURPOSES ONLY, AND SHOULD NOT BE USED FOR BIDDING. CONTRACTOR IS RESPONSIBLE TO DETERMINE HIS OWN QUANTITIES AND TO BID A COMPLETE JOB.



INDEX MAP
SCALE 1" = 200'

REVIEWED BY:
WESTERN MUNICIPAL WATER DISTRICT
SHEET 1 THRU 13
Thomas H. Spill
SUPV. DESGN. ENG. R.C.E. 21643
DATE: Nov 9, 1988

BENCH MARK:
CITY OF RIVERSIDE B.M. FB-B P.K. NAIL AND TAG IN CONC. RETAINING WALL SE'LY OF INTERSECTION OF ALESSANDRO BLVD. AND TRAUTWEIN RD.
ELEVATION: 116.07.635

B.E. BLANK CIVIL ENGINEERS
P.O. BOX 6302 ANAHEIM, CA. 92816 (714) 639-9010
PREPARED UNDER THE SUPERVISION OF:
Bruce E. Blank
BRUCE E. BLANK R.C.E. 26492 EXP. 3-31-92 DATE 5-31-88

MARK	REVISION	APPR. DATE
DESIGNED BY: B.E.B.	DRAWN BY: CAD	CHECKED BY: B.E.B.

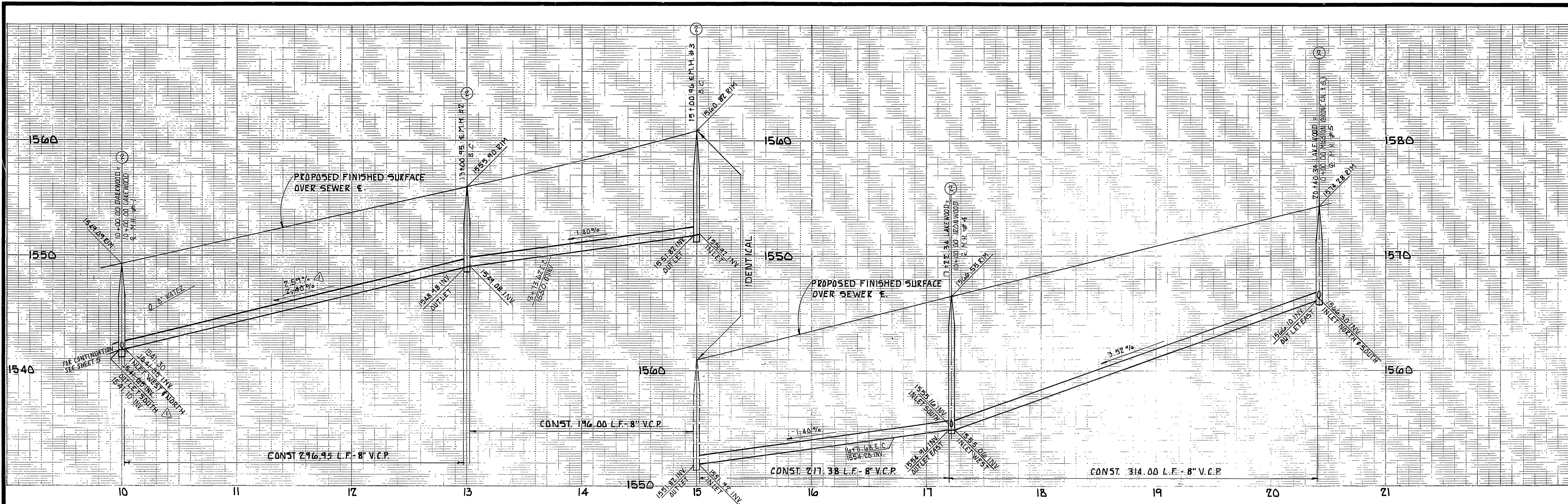
**CITY OF RIVERSIDE
PUBLIC WORK DEPARTMENT**

APPROVED BY	DATE	BY	APPROVED BY
PRINCIPAL ENGINEER	5-1-89	<i>[Signature]</i>	<i>[Signature]</i>
PARK DEPARTMENT			
TRAFFIC DIVISION			
CHIEF P.W. ENGINEER			

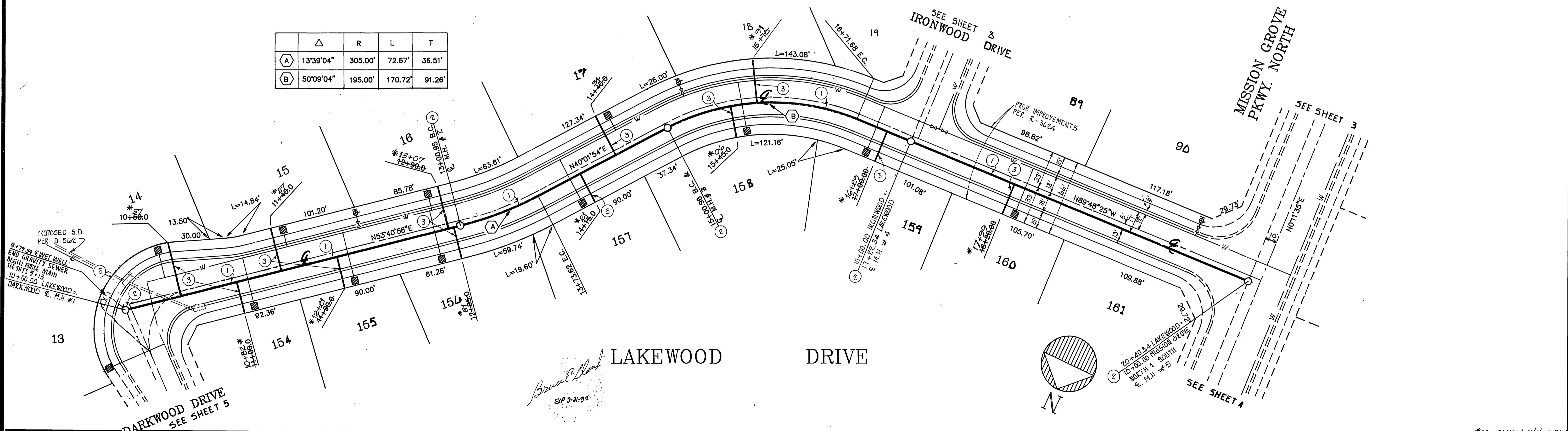
DATE: 6/9/89

**TITLE SHEET
SEWER IMPROVEMENT PLAN
FOR
TRACT 21631**

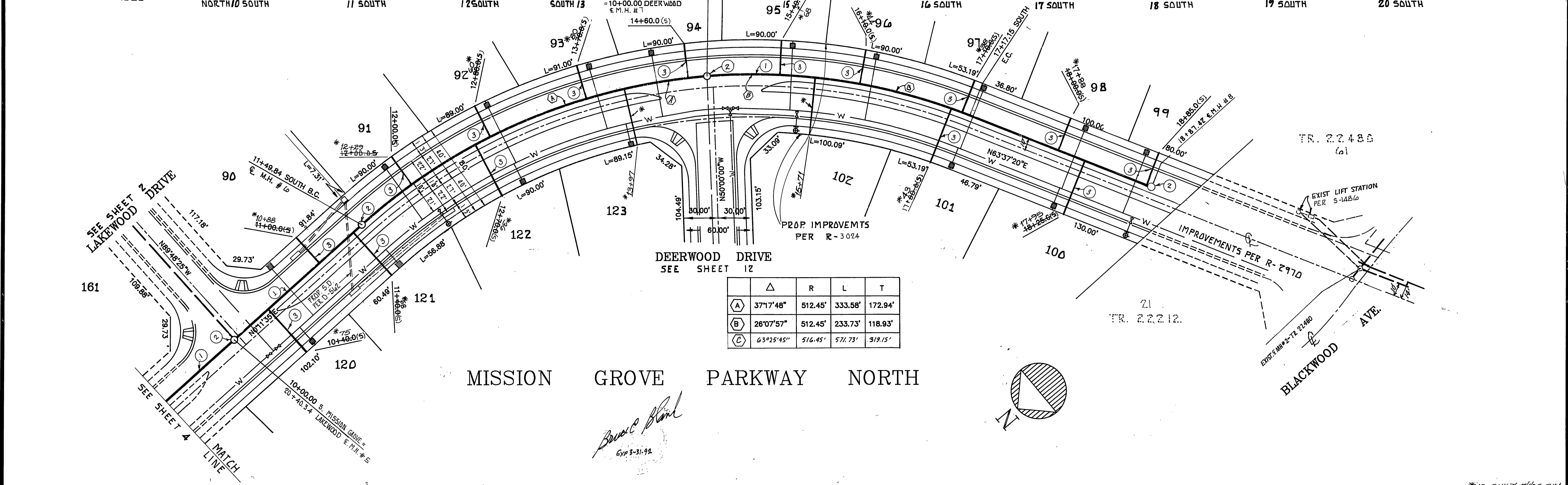
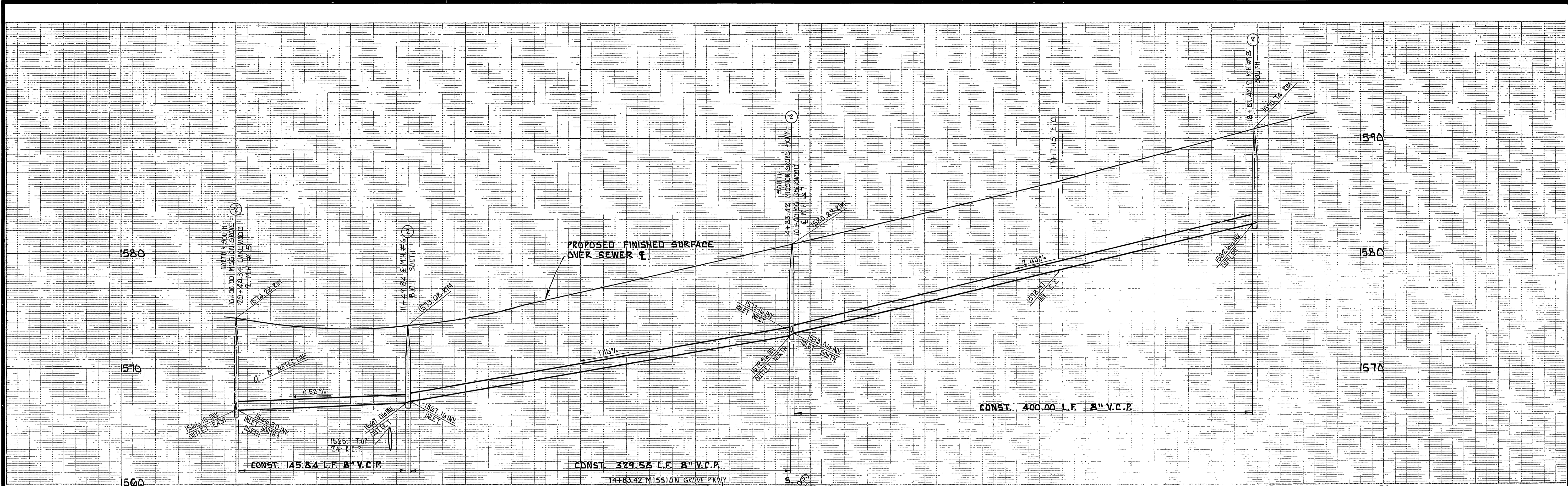
AS BUILT 7/1/89 R.M.
ACCOUNT NO.
5-1530
SHEET 1 OF 13



	Δ	R	L	T
A	13°39'04"	305.00'	72.67'	36.51'
B	50°09'04"	195.00'	170.72'	91.26'



BENCH MARK: CITY OF RIVERSIDE B.M. FB-B P.K. MAIL AND TAG IN CONC. RETAINING WALL SE'LY OF INTERSECTION OF ALESSANDRA BLVD. AND TRAUTWEIN RD. ELEVATION = 1607.635	B.E. BLANK CIVIL ENGINEERS P.O. BOX 6302 ANAHEIM, CA. 92816 (714) 639-9070 PREPARED UNDER THE SUPERVISION OF <i>Bruce E. Blank</i> BRUCE E. BLANK R.E.E. 26492 DATE 5-9-88	CITY OF RIVERSIDE PUBLIC WORKS DEPARTMENT APPROVED BY: [Signature] DATE: 3-1-89 PRINCIPAL ENGINEER PARK DEPARTMENT TRAFFIC DIVISION CHIEF P.W. ENGINEER 3/3/89	SEWER IMPROVEMENT PLANS FOR TRACT 21631 LAKEWOOD DRIVE HORIZ. SCALE: 1" = 40' VERT. SCALE: 1" = 4'	ACCOUNT NO. 5-1530 SHEET 2 OF 13



BENCH MARK:
 CITY OF RIVERSIDE B.M. F&B P.K. NAIL
 AND TAG IN CONC. RETAINING WALL SE'LY OF
 INTERSECTION OF ALESSANDRO BLVD AND TRAUTWEIN
 RD.
 ELEVATION = 1607.635

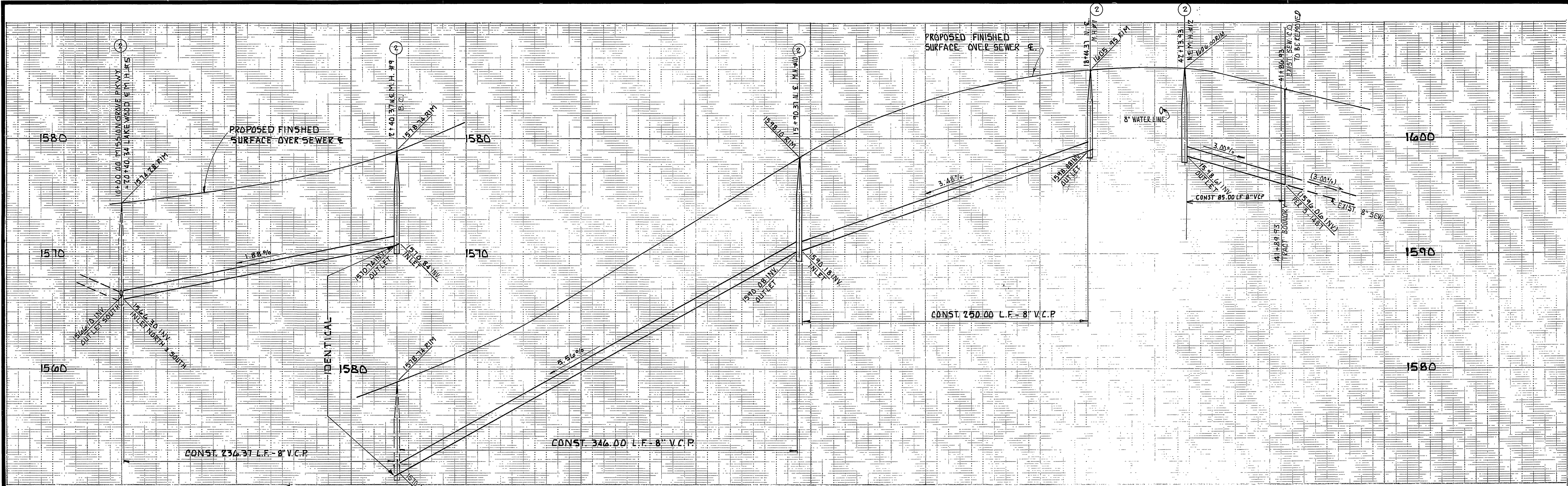
B.E. BLANK CIVIL ENGINEERS
 P.O. BOX 6302 ANAHEIM, CA. 92816
 (714) 639-9074
 PREPARED UNDER THE SUPERVISION OF
Bruce E. Blank
 BRUCE E. BLANK R.C.E. 76492 DATE 5-31-88

DESIGNED BY B.E.B. DRAWN BY CAD. CHECKED BY B.E.B.
 REVISIONS: _____
 APPR. DATE: _____
 CHIEF P.W. ENGINEER: _____

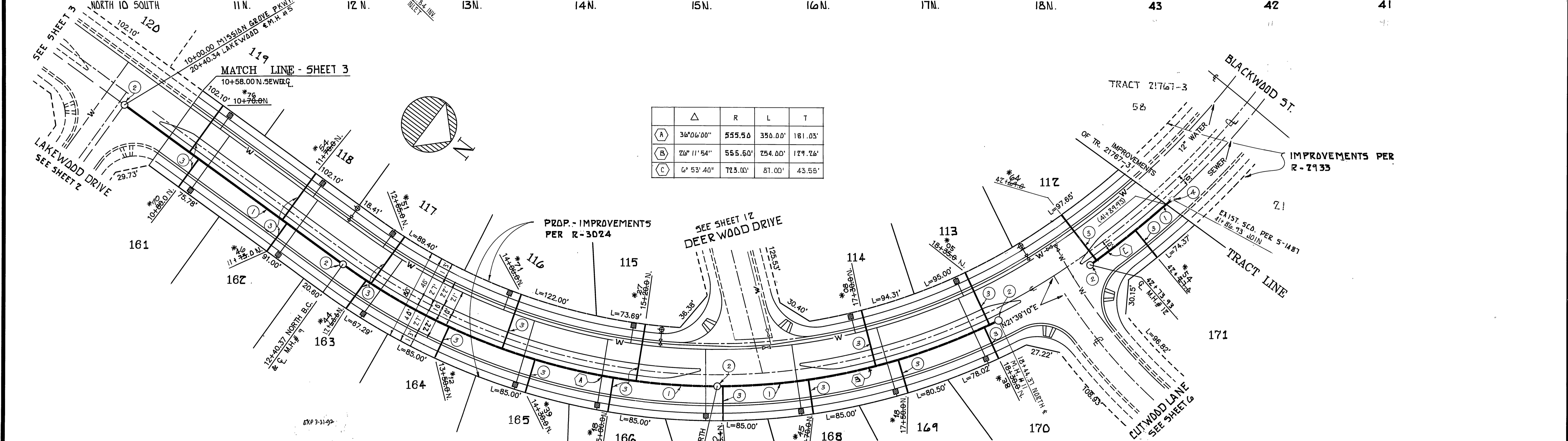
CITY OF RIVERSIDE
PUBLIC WORKS DEPARTMENT
 APPROVED BY: _____ DATE: 3-1-87
 PRINCIPAL ENGINEER: _____
 PARK DEPARTMENT: _____
 TRAFFIC DIVISION: _____
 CHIEF P.W. ENGINEER: _____ DATE: 6/9/89

SEWER IMPROVEMENT PLANS
 FOR
 TRACT 21631
 MISSION GROVE PARKWAY NORTH
 HORIZ. SCALE: 1" = 40' VERT. SCALE: 1" = 4'

ACCOUNT NO. _____
 S-1530
 SHEET 3 OF 13



	Δ	R	L	T
(A)	36°06'00"	555.50	350.00'	181.03'
(B)	26°11'54"	555.50'	254.00'	129.26'
(C)	6°53'40"	723.00'	81.00'	43.55'



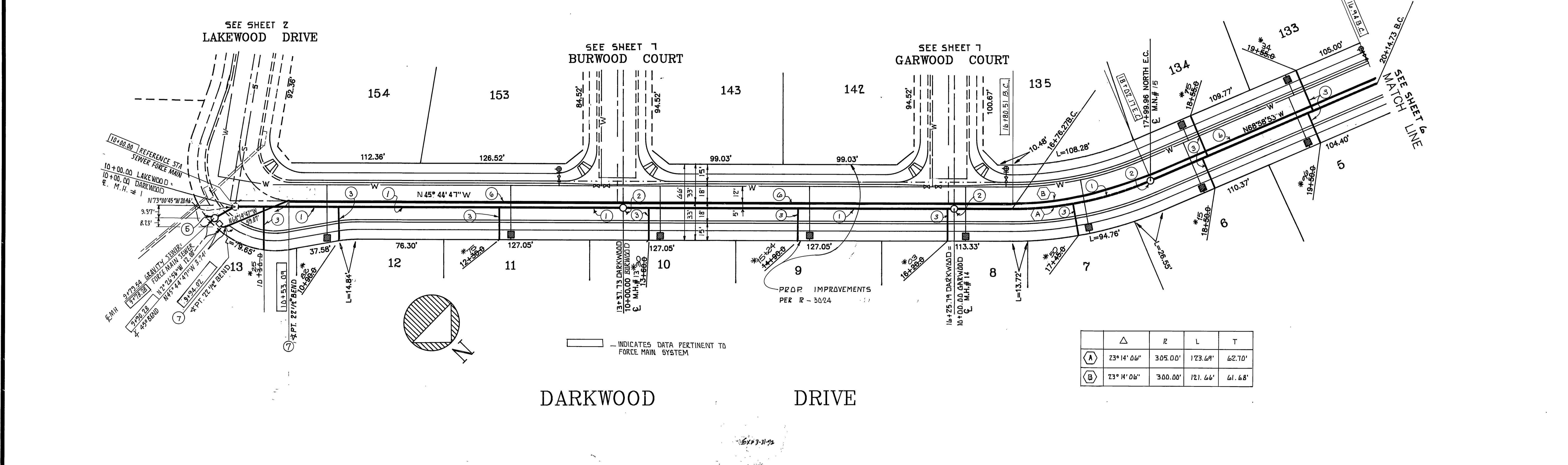
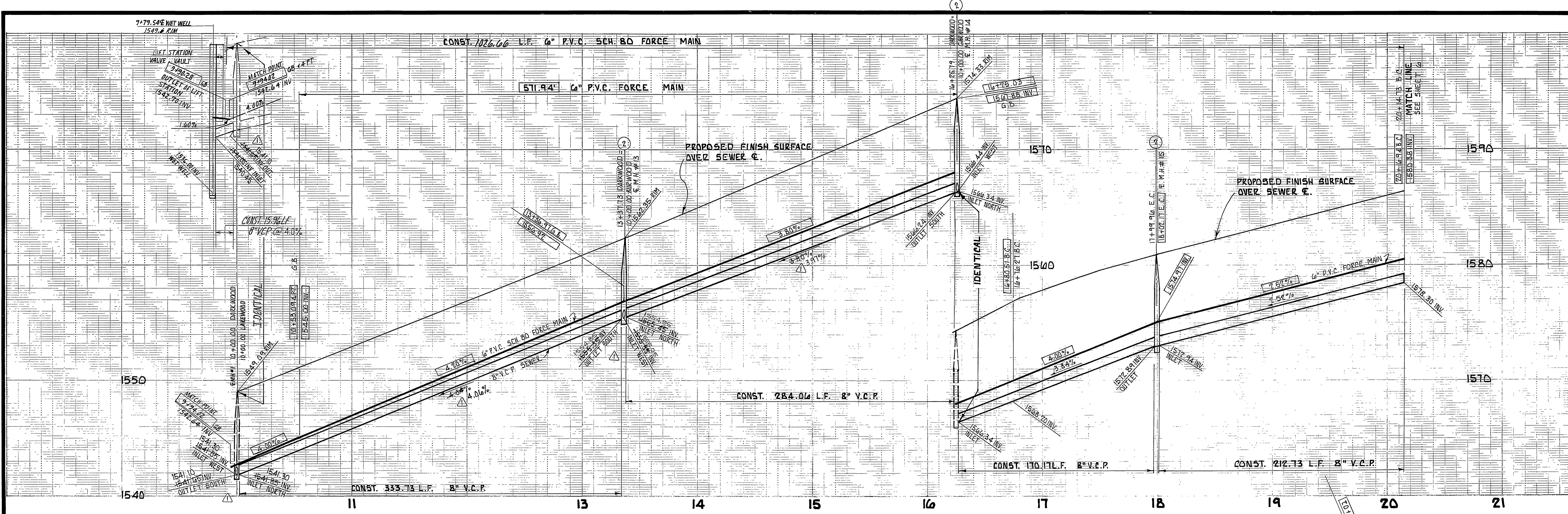
MISSION GROVE PARKWAY NORTH

BENCH MARK:
CITY OF RIVERSIDE B.M. F8-B P.K. NAIL
AND TAG IN CONC. RETAINING WALL S.E.'LY
OF INTERSECTION OF ALESSANDRO BLVD. AND
TRAUTWEIN RD.
ELEVATION = 1607.635

B.E. BLANK CIVIL ENGINEERS
P.O. BOX 6302 ANAHEIM, CA. 92810
(714) 639-9070
PREPARED UNDER THE SUPERVISION OF
Bruce E. Blank
BRUCE E. BLANK R.C.E. 26492 DATE 5-31-88

CITY OF RIVERSIDE
PUBLIC WORKS DEPARTMENT
APPROVED BY: *[Signature]* DATE: 3-7-89
PRINCIPAL ENGINEER
TRAFFIC DIVISION
DESIGNED BY: B.E.B. DRAWN BY: CAD. CHECKED BY: B.E.B.

SEWER IMPROVEMENT PLANS
FOR
TRACT 21631
MISSION GROVE PARKWAY NORTH
HORIZ. SCALE: 1" = 40' VERT. SCALE: 1" = 4'
ACCOUNT NO. S-1530
SHEET 4 OF 13
DATE: 6/1/89
INDEXED 8-11-89 JN 274



	Δ	R	L	T
(A)	23°14'06"	305.00'	123.69'	62.70'
(B)	73°14'06"	300.00'	121.66'	61.68'

BENCH MARK:
 CITY OF RIVERSIDE, B.M. F8-B P.K. MAIL
 AND TAG IN CONC. RETAINING WALL S'LY OF
 INTERSECTION OF ALESSANDRO BLVD. AND
 TRAUTWEIN RD.
 ELEVATION = 1607.635

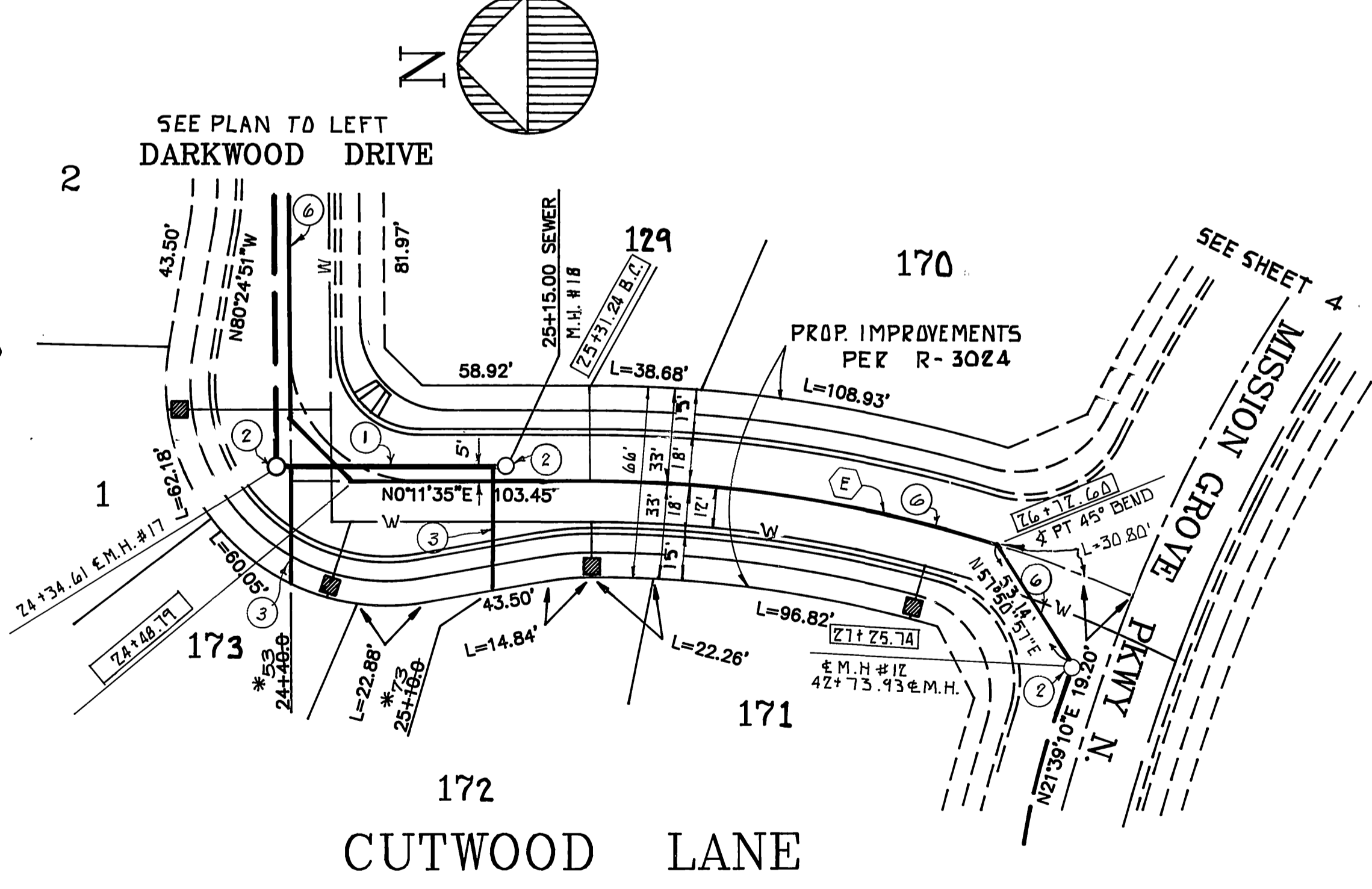
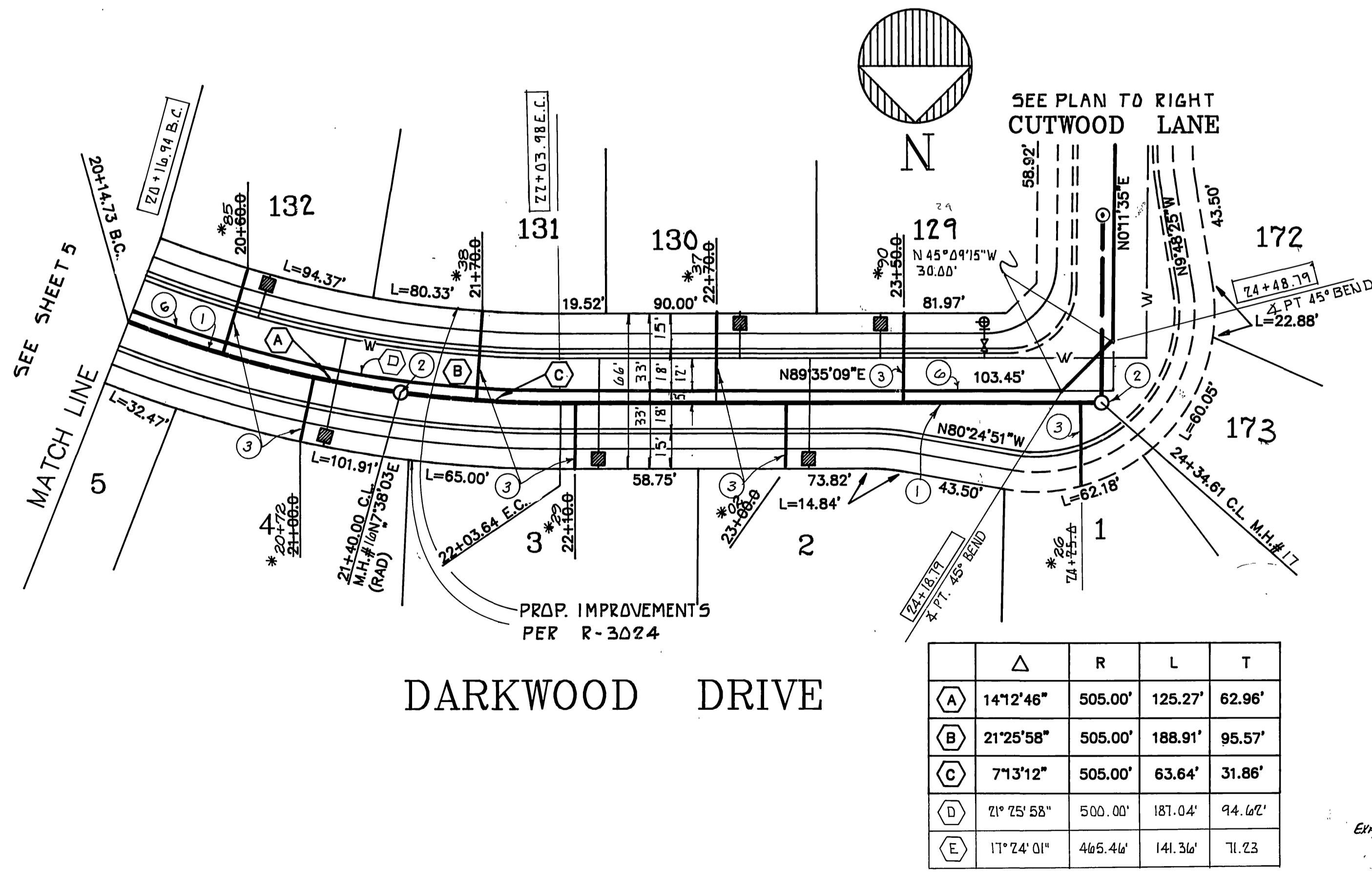
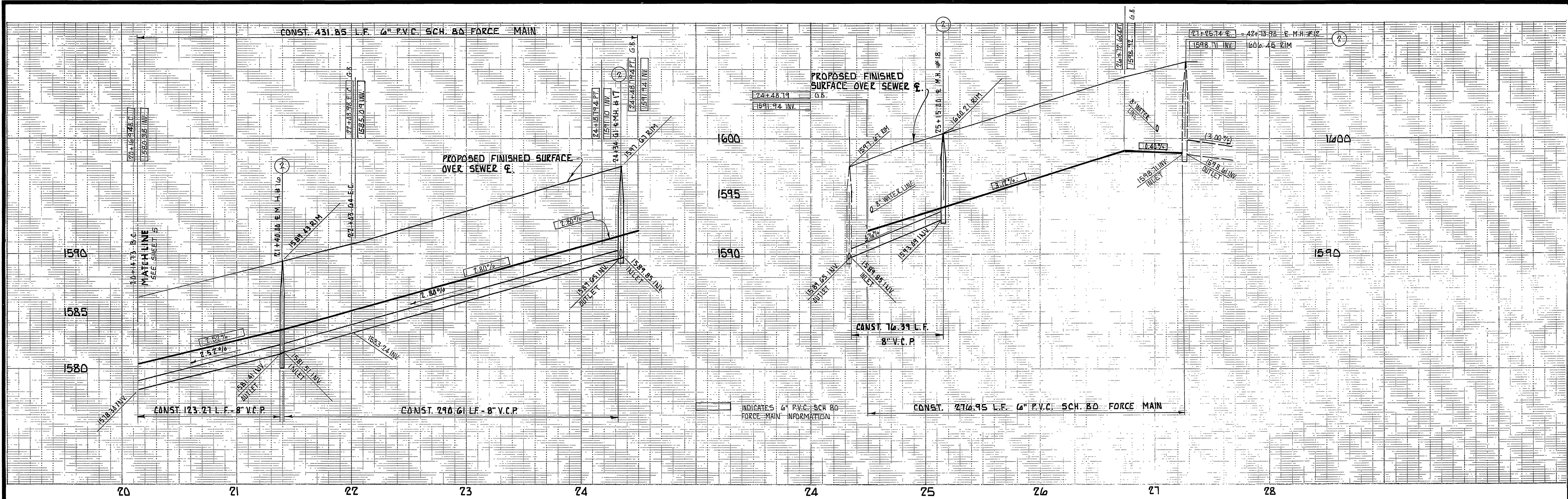
B.E. BLANK CIVIL ENGINEERS
 P.O. BOX 6302 ANAHEIM, CA. 92810
 (714) 639-9070
 PREPARED UNDER THE SUPERVISION OF
Bruce E. Blank
 BRUCE E. BLANK R.C.E. 26492 DATE 5-31-88

REVISIONS
 MARK REVISIONS APPR. DATE
 DESIGNED BY B.E.B. DRAWN BY CAD. CHECKED BY B.E.B.

CITY OF RIVERSIDE
 PUBLIC WORKS DEPARTMENT
 APPROVED BY DATE BY
 PRINCIPAL ENGINEER 3-1-88
 PARK DEPARTMENT
 TRAFFIC DIVISION
 CHIEF P.W. ENGINEER
 APPROVED BY DATE BY
 PUBLIC WORKS DIRECTOR
 DATE 6/29/89

SEWER IMPROVEMENT PLANS
 FOR
 TRACT 21031
 DARKWOOD DRIVE
 HORIZ. SCALE: 1" = 40' VERT. SCALE: 1" = 4'

ACCOUNT NO.
 S-1530
 SHEET 5 OF 13
 INDEXED 8-11-89 FILE JLU274



	Δ	R	L	T
(A)	14°12'46"	505.00'	125.27'	62.96'
(B)	21°25'58"	505.00'	188.91'	95.57'
(C)	7°13'12"	505.00'	63.64'	31.86'
(D)	2°25'58"	500.00'	187.04'	94.62'
(E)	17°24'01"	465.46'	141.36'	71.23'

BENCH MARK:
CITY OF RIVERSIDE B.M. F8-B P.K. NAIL
AND TAG IN CONC. RETAINING WALL S'ELY OF
INTERSECTION OF ALESSANDRO BLVD. AND
TRAUTWEIN RD.
ELEVATION = 1607.635

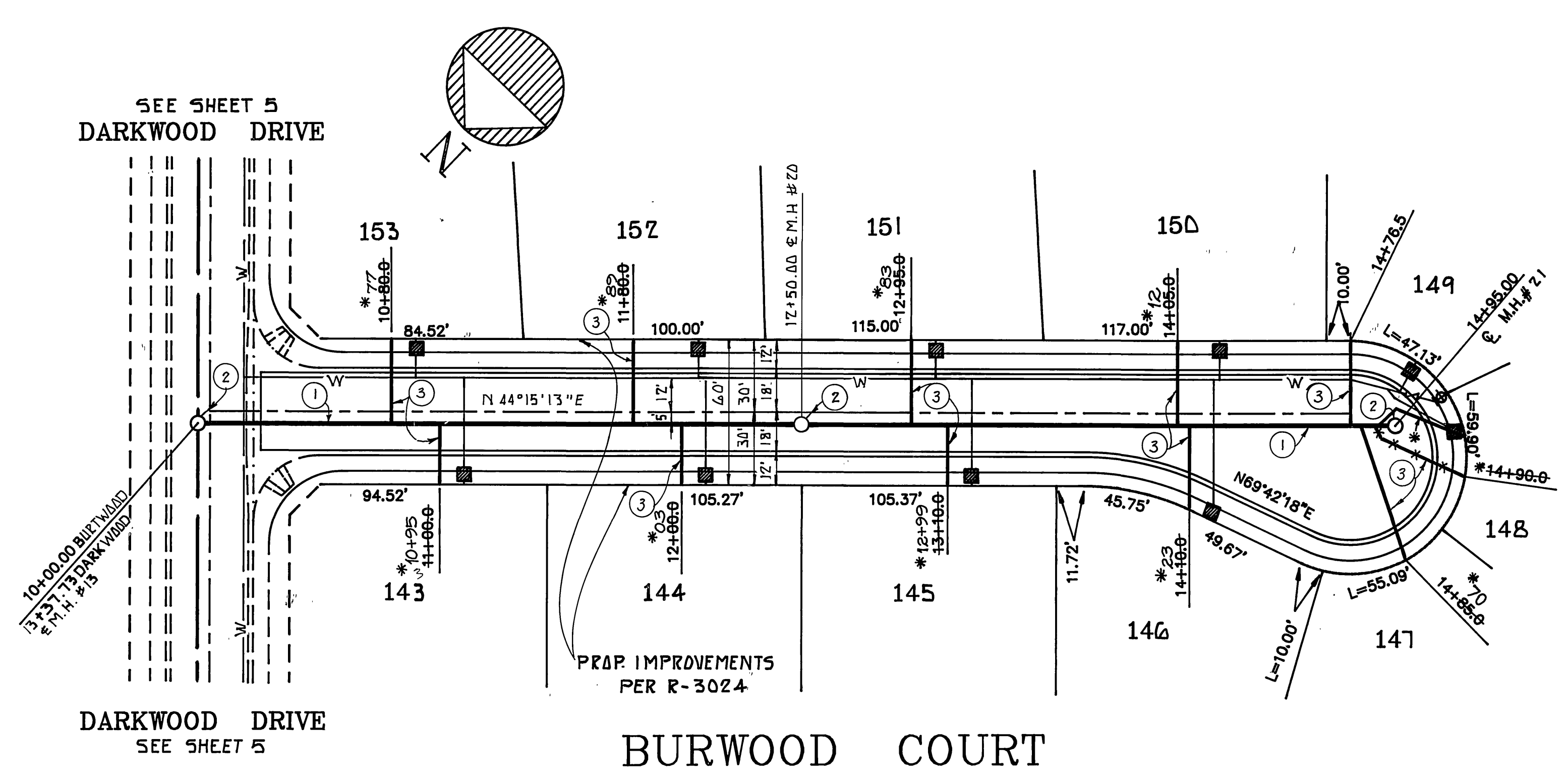
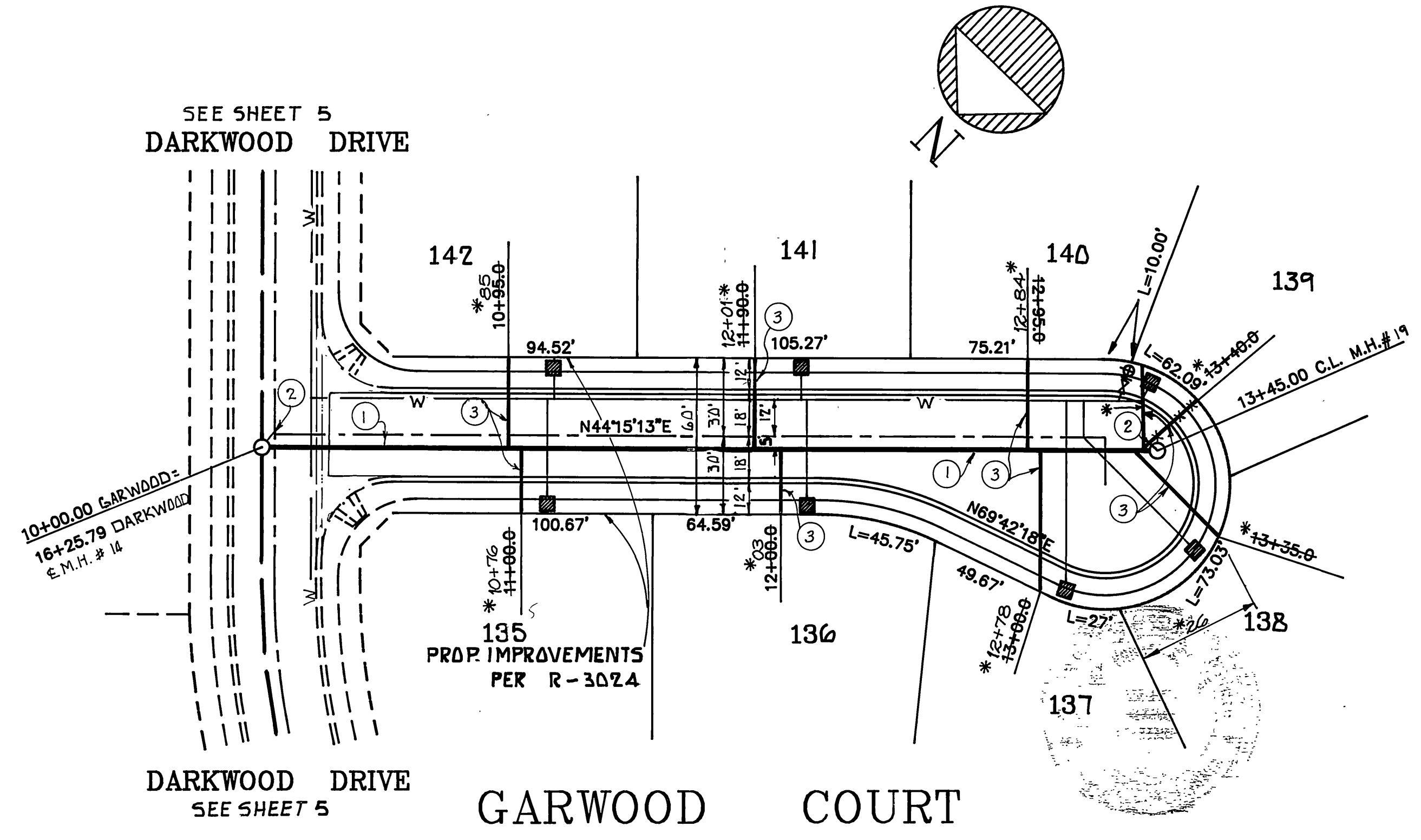
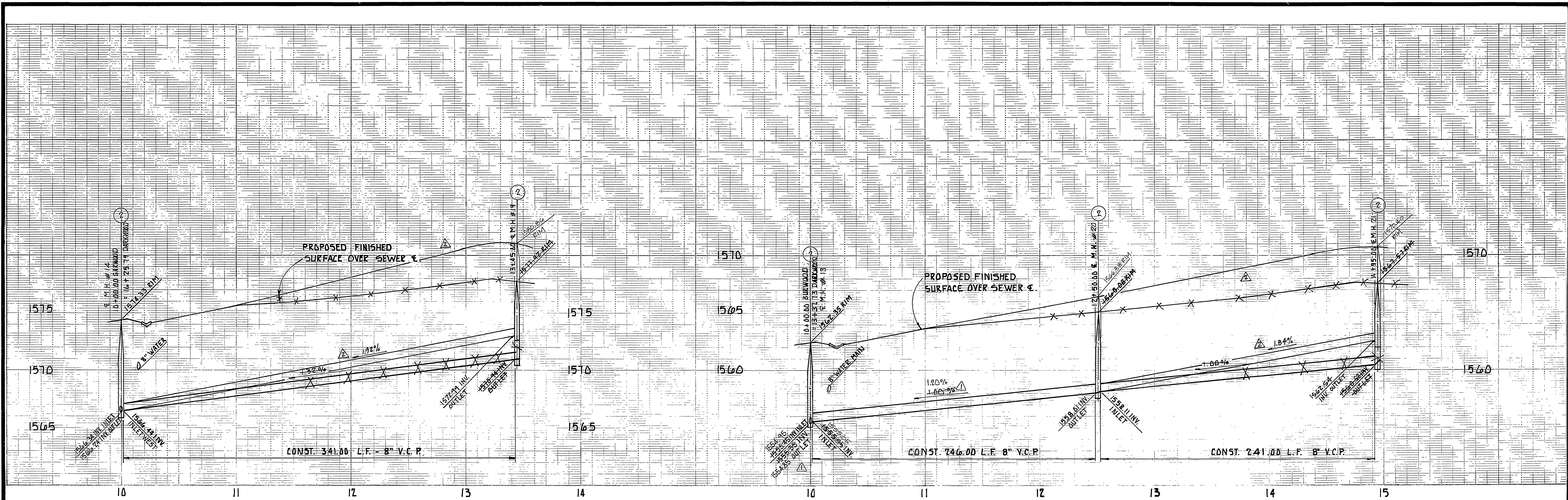
B.E. BLANK, CIVIL ENGINEERS
P.O. BOX 6307 ANAHEIM, CA. 92816
(714) 639-9076
PREPARED UNDER THE SUPERVISION OF
Bruce E. Blank
BRUCE E. BLANK R.C.E. 76492 DATE 5-31-88

DESIGNED BY B.E.B. DRAWN BY CAD. CHECKED BY B.E.B.
REVISIONS
APPR. DATE
MARK

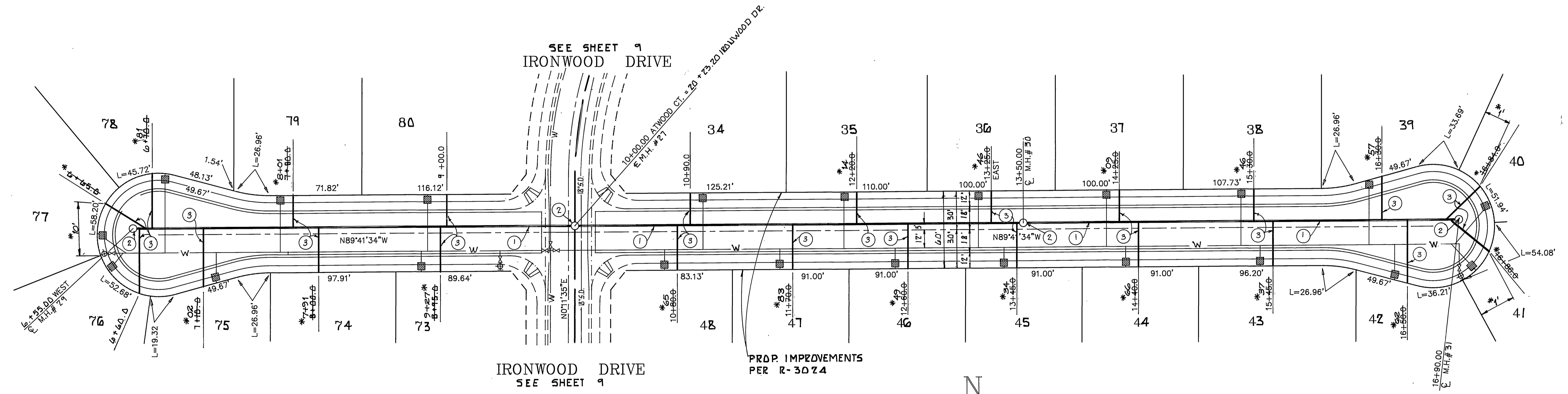
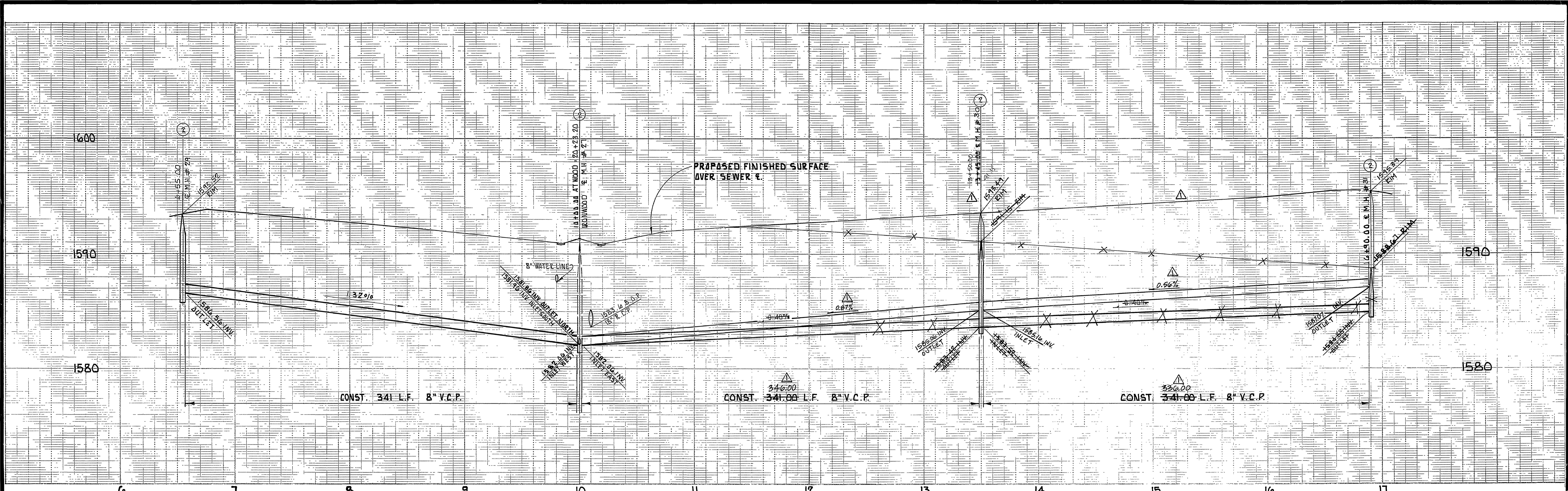
CITY OF RIVERSIDE
PUBLIC WORKS DEPARTMENT
APPROVED BY DATE BY
PRINCIPAL ENGINEER 5-1-88
PARK DEPARTMENT
TRAFFIC DIVISION
CHIEF P.W. ENGINEER
APPROVED BY DATE BY
PUBLIC WORKS DIRECTOR
DATE 6/1/88

SEWER IMPROVEMENT PLANS
FOR
TRACT 21031
CUTWOOD LANE & DARKWOOD DRIVE
HORIZ. SCALE: 1" = 40' VERT. SCALE: 1" = 4'

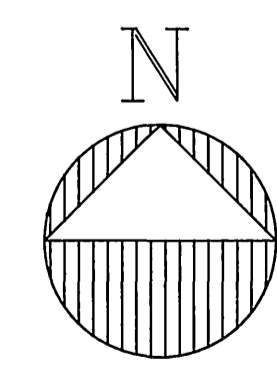
ACCOUNT NO.
5-1530
SHEET 6 OF 13



<p>BENCH MARK: CITY OF RIVERSIDE B.M. F8-B P.K. NAIL AND TAG IN CONC. RETAINING WALL SE'LY OF INTERSECTION OF ALESSANDRO BLVD. AND TRAUTWEIN RD. ELEVATION = 1607.635</p>	<p>B.E. BLANK CIVIL ENGINEERS P.O. BOX 6302 ANAHEIM, CA 92816 (714) 639-9670 PREPARED UNDER THE SUPERVISION OF <i>Bruce E. Blank</i> BRUCE E. BLANK R.O.E. 76492 DATE 5-31-88</p>	<p>FOR REVISION</p> <p>BY: CSL ENGINEERING, INC. 2900 ADAMS STREET SUITE A25 RIVERSIDE, CALIFORNIA 92504 PH. (714) 785-5122</p> <p><i>Richard A. Scanni</i> 5-28-91 RICHARD A. SCIANNI R.C.E. No. 25917 DATE</p>	<p>CITY OF RIVERSIDE PUBLIC WORKS DEPARTMENT</p> <p>APPROVED BY: <i>Richard A. Scanni</i> DATE: 5-28-91 PRINCIPAL ENGINEER TRAFFIC DIVISION CHIEF P.W. ENGINEER</p>	<p>SEWER IMPROVEMENT PLANS FOR TRACT 21631 GARWOOD COURT & BURWOOD COURT</p> <p>HORIZ. SCALE: 1" = 40' VERT. SCALE: 1" = 4'</p>	<p>ACCOUNT NO. 5-1530 SHEET 7 OF 13</p>
--	---	---	--	---	---



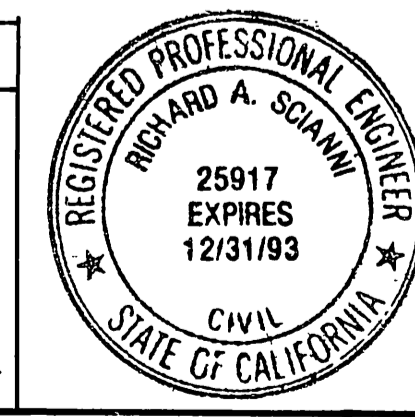
ATWOOD COURT



FOR REVISION

BY:
CSL ENGINEERING, INC.
 2900 ADAMS STREET SUITE A25
 RIVERSIDE, CALIFORNIA 92504
 PH. (714) 785-5122

Richard A. Scanni
 RICHARD A. SCIANNI R.C.E. NO. 25917 DATE 5-28-91



BENCH MARK:
 CITY OF RIVERSIDE B.M. F8-B P.K. NAIL
 AND TAG IN CONC. RETAINING WALL SE'LT OF
 INTERSECTION OF ALESSANDRO BLVD. AND
 TRAUTWEIN RD.
 ELEVATION = 1607.635

B.E. BLANK CIVIL ENGINEERS
 P.O. BOX 6302 ANAHEIM, CA. 92816
 (714) 639-9074
 PREPARED UNDER THE SUPERVISION OF
Bruce E. Blank
BRUCE E. BLANK R.C.E. 26492 DATE 5-31-88

MARK	REVISIONS	APPR. DATE	CHKD. DATE
△	REV. ST. & SELL. GRADES & ELEV'S	<i>WJL</i>	<i>WJL</i>

DESIGNED BY B.E.B. DRAWN BY CAD. CHECKED BY B.E.B.

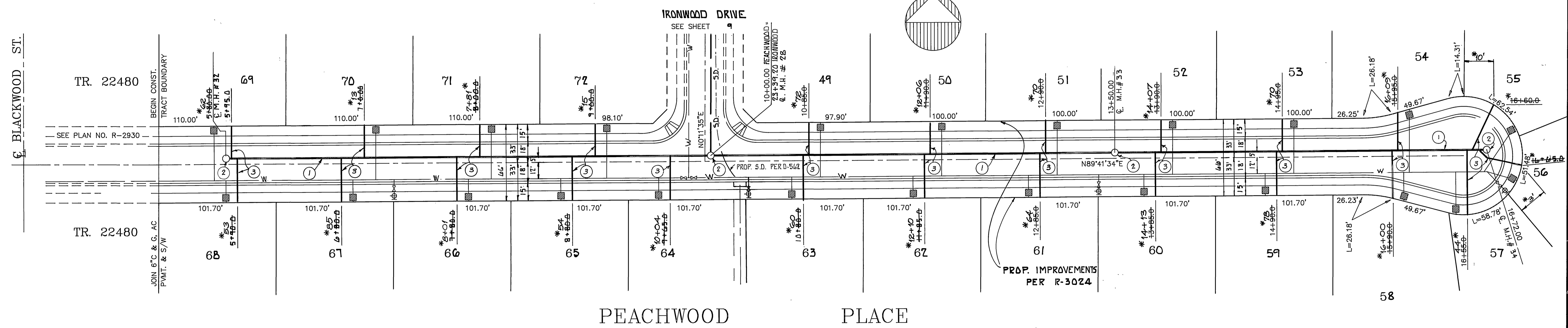
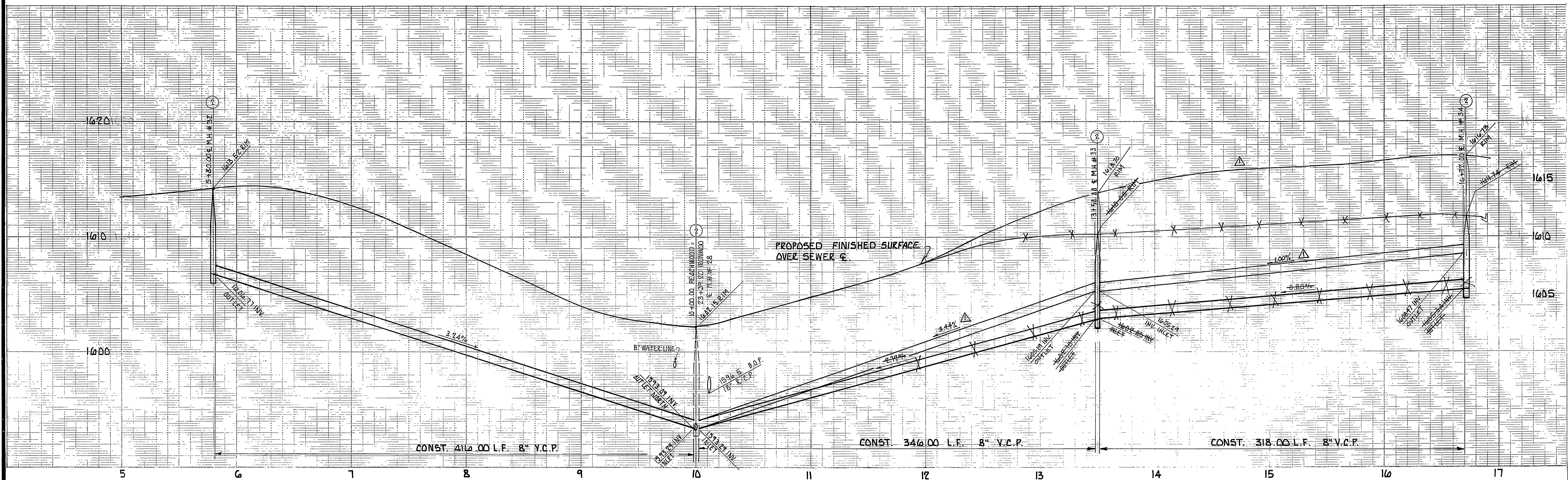
CITY OF RIVERSIDE
PUBLIC WORKS DEPARTMENT

APPROVED BY	DATE	BY	DATE
PRINCIPAL ENGINEER	3-1-88	<i>Barry Beal</i>	
PARK DEPARTMENT			
TRAFFIC DIVISION			
CHIEF P.W. ENGINEER	3/3/89		

APPROVED BY PUBLIC WORKS DIRECTOR DATE 6/9/89

SEWER IMPROVEMENT PLANS
 FOR
TRACT 21031
ATWOOD COURT
 HORIZ. SCALE: 1" = 40' VERT. SCALE: 1" = 4'

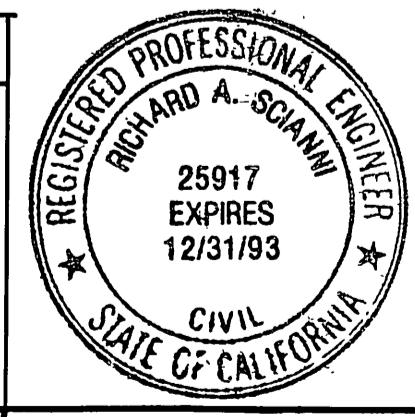
ACCOUNT NO.
5-1530
 SHEET **10** OF **13**



BENCH MARK:
 CITY OF RIVERSIDE B.M. FB-D P.K. NAIL
 AND TAG IN CONC. RETAINING WALL SE'LY OF
 INTERSECTION OF ALESSANDRO BLVD AND
 TRAUTWEIN RD.
 ELEVATION = 1607.635

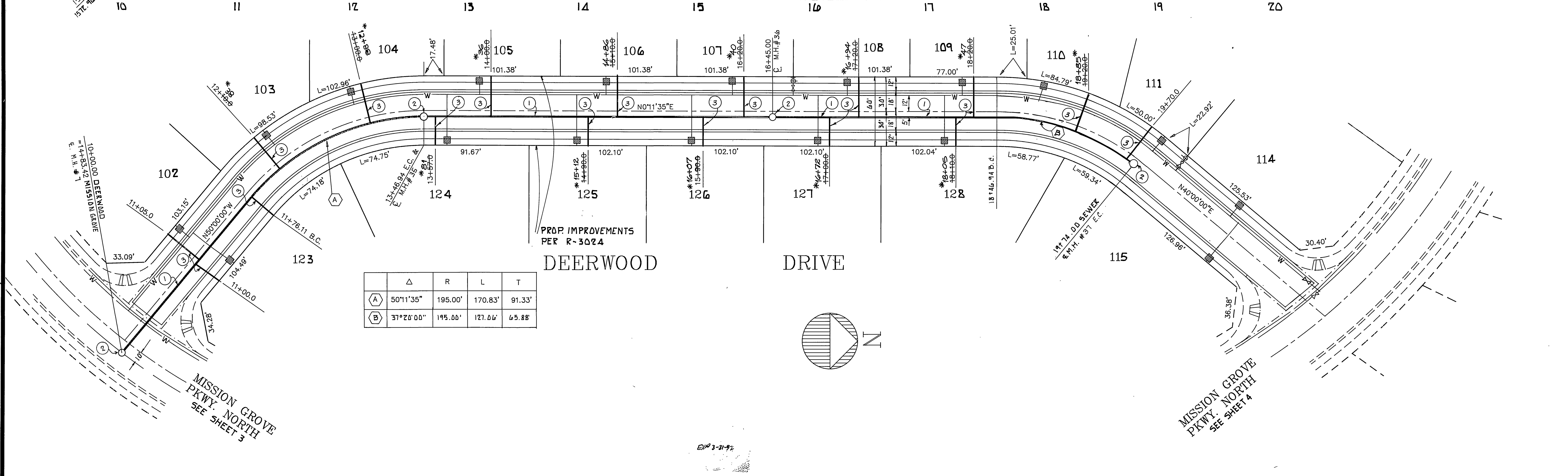
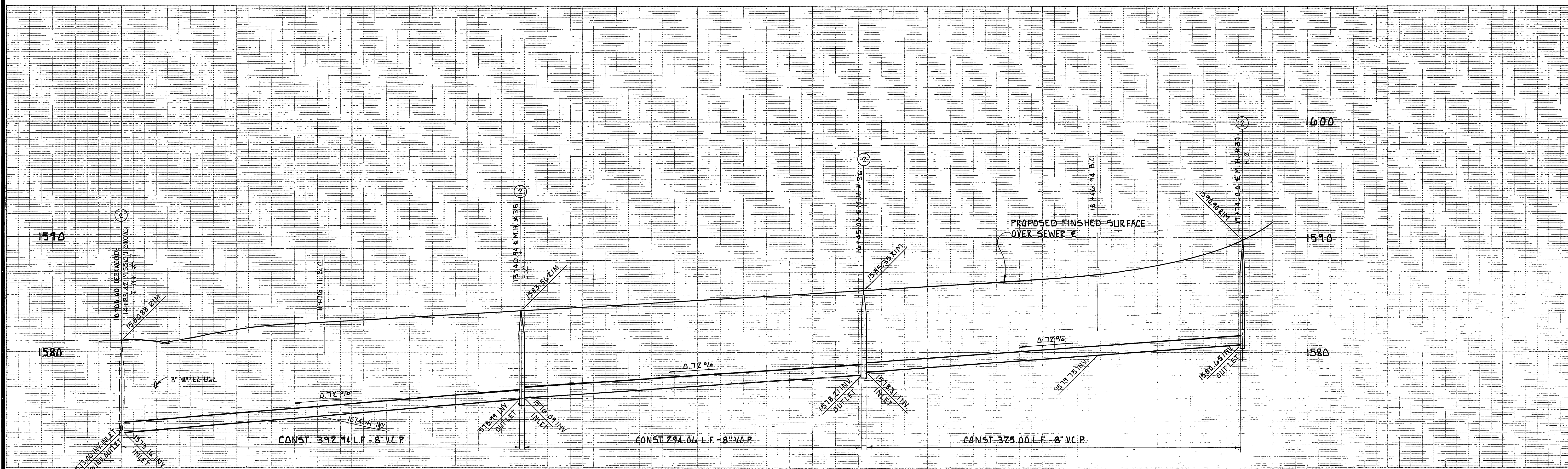
B.E. BLANK CIVIL ENGINEERS
 P.O. BOX 6307 ANAHEIM, CA 92816
 714 639-9074
 PREPARED UNDER THE SUPERVISION OF
Bruce E. Blank
BRUCE E. BLANK R.C.E. 76447 DATE 5-31-88

FOR REVISION Δ
 By: **CSL ENGINEERING, INC.**
 2900 ADAMS STREET SUITE A25
 RIVERSIDE, CALIFORNIA 92504
 PH. (714) 785-5122
Richard A. Scanni
 RICHARD A. SCIANNI R.C.E. NO. 25917 DATE 5-28-91



CITY OF RIVERSIDE
 PUBLIC WORKS DEPARTMENT
 APPROVED BY: *Raymond*
 PUBLIC WORKS DIRECTOR
 DATE: 6/9/89

SEWER IMPROVEMENT PLANS
 FOR
 TRACT 21631
 PEACHWOOD PLACE
 SHEET 11 OF 13
 HORIZ. SCALE: 1" = 40' VERT. SCALE: 1" = 4'
 ACCOUNT NO. 5-1530
 INDEXED 8-11-89 LK JN274



BENCH MARK:
 CITY OF RIVERSIDE B.M. F8-B P.K. NAIL AND
 TAG IN BOND. RETAINING WALL SE'LY OF INTERSECTION
 ALESSANDRO BLVD. AND TRAUTWEINS RD.
 ELEVATION = 1607.635

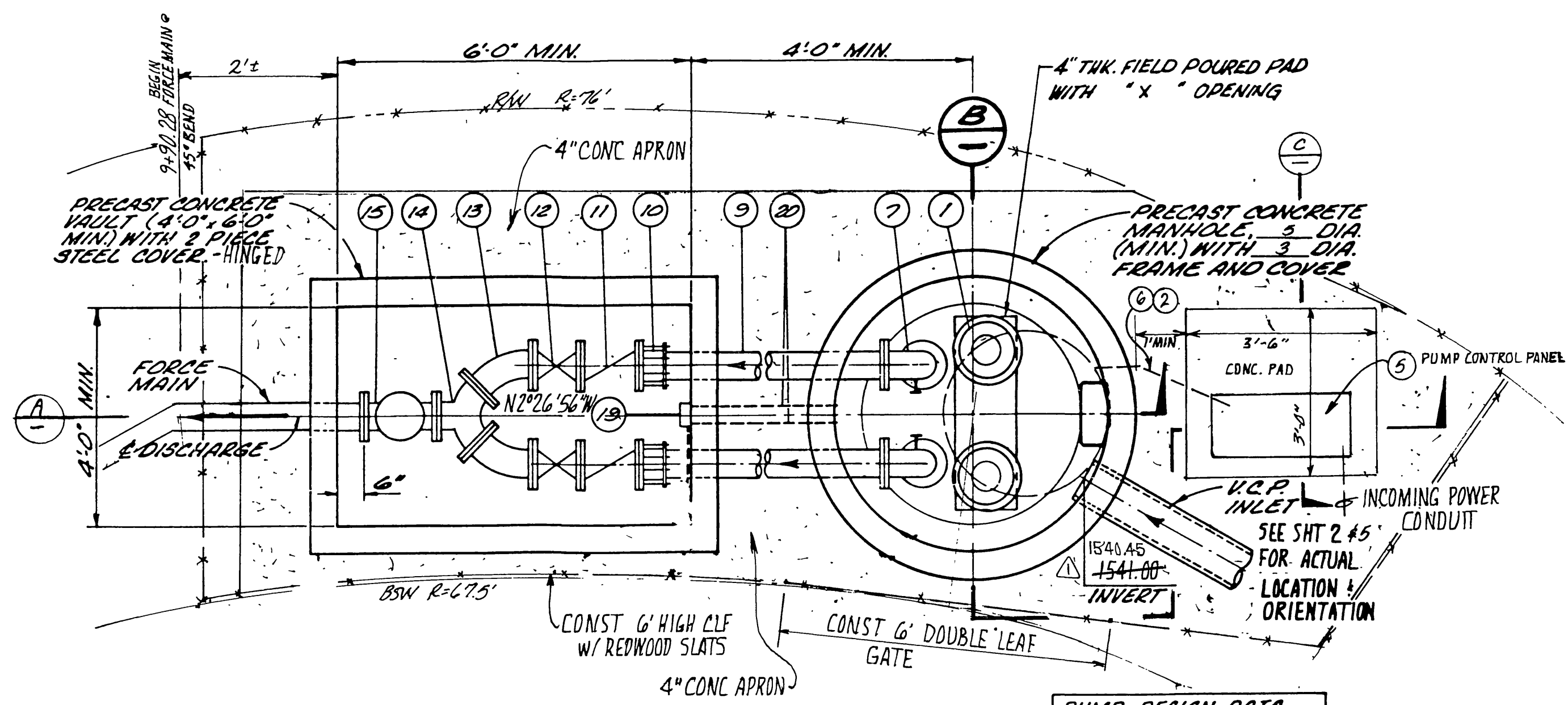
B.E. BLANK CIVIL ENGINEERS
 P.O. BOX 6302 ANAHEIM, CA 92816
 (714) 639-9874
 PREPARED UNDER THE SUPERVISION OF
Bruce E. Blank
 BRUCE E. BLANK R.C.E. 20492 DATE 5-31-88

MARK REVISIONS APPR. DATE
 DESIGNED BY S.E.B. DRAWN BY CAD CHECKED BY S.E.B.
 PREP

CITY OF RIVERSIDE
PUBLIC WORKS DEPARTMENT
 APPROVED BY DATE 3-7-94
 PRINCIPAL ENGINEER
 PARK DEPARTMENT
 TRAFFIC DIVISION
 CHIEF P.W. ENGINEER
 APPROVED BY DATE 6/9/89
 PUBLIC WORKS DIRECTOR

SEWER IMPROVEMENT PLANS
 FOR
 TRACT 21631
 DEERWOOD DRIVE
 HORIZ. SCALE: 1"=40' VERT. SCALE: 1"=4'

ACCOUNT NO.
 5-1530
 SHEET 12 OF 13

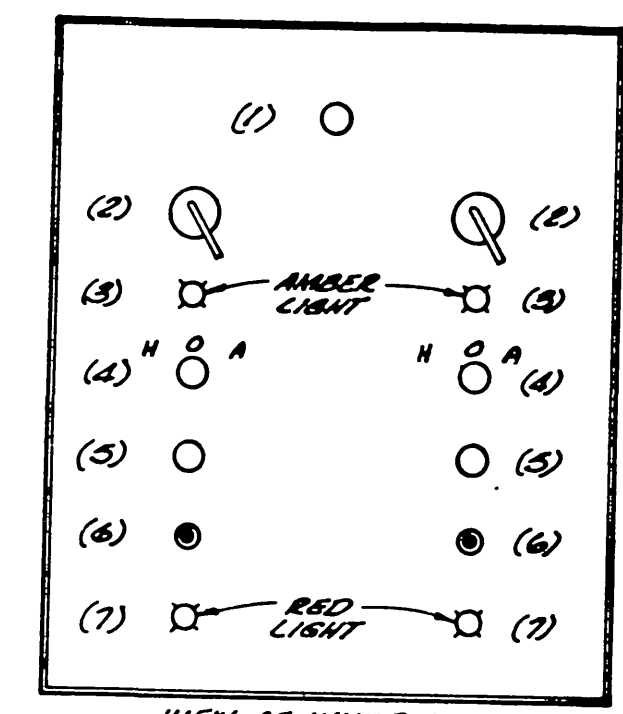
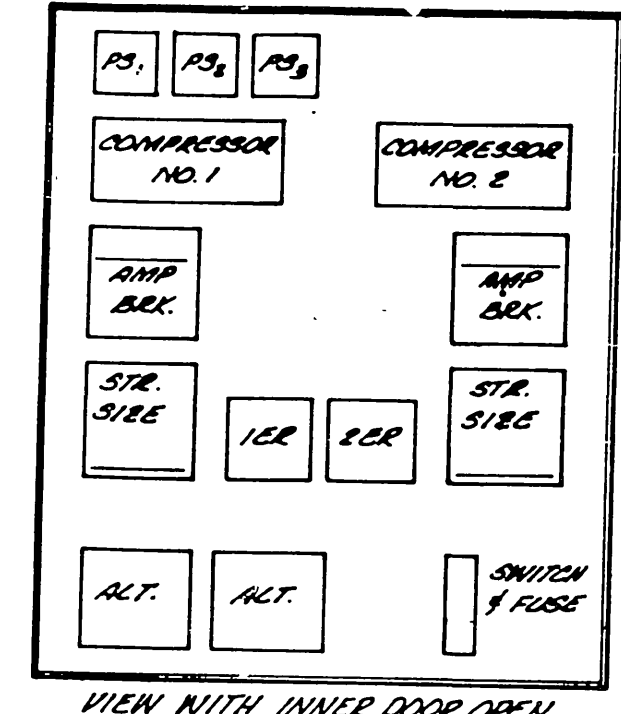
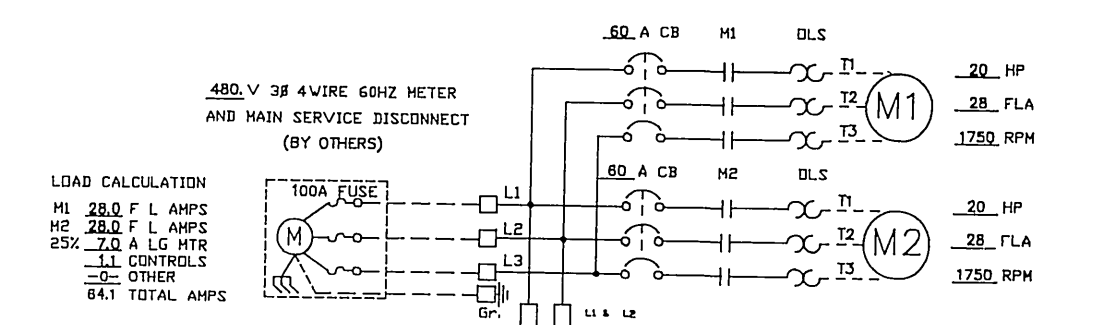


PLAN
SEWER LIFT STATION
SCALE: 1/4" = 1'-0"

PUMP DESIGN DATA

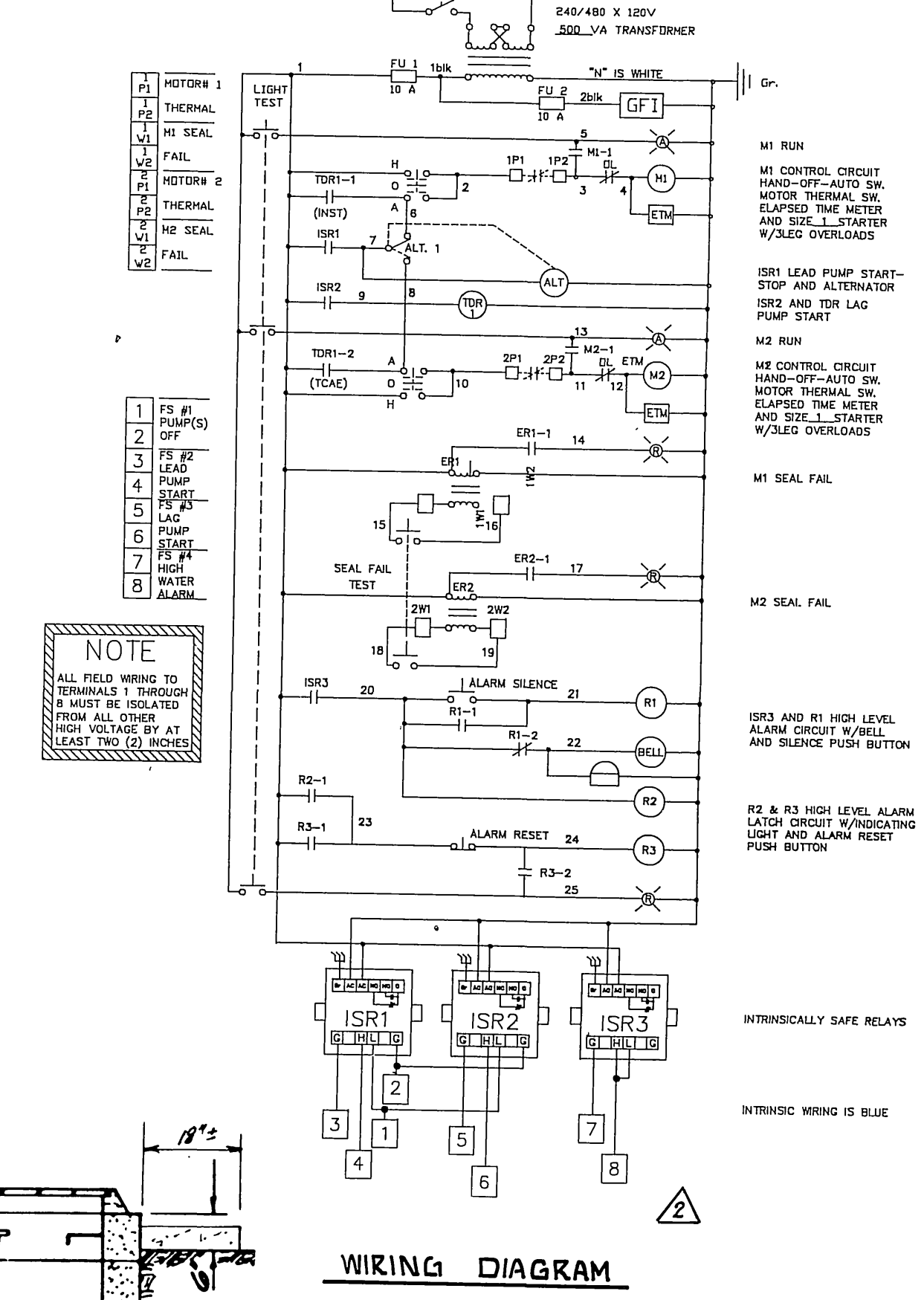
200 G.P.M.	100 T.D.H.
2.0 H.P.	1750 RPM

ESSCO PUMP AGENT
ENGINEERS SALES-SERVICE COMPANY, INC.
4335 TELEGRAPH ROAD
LOS ANGELES, CALIF.

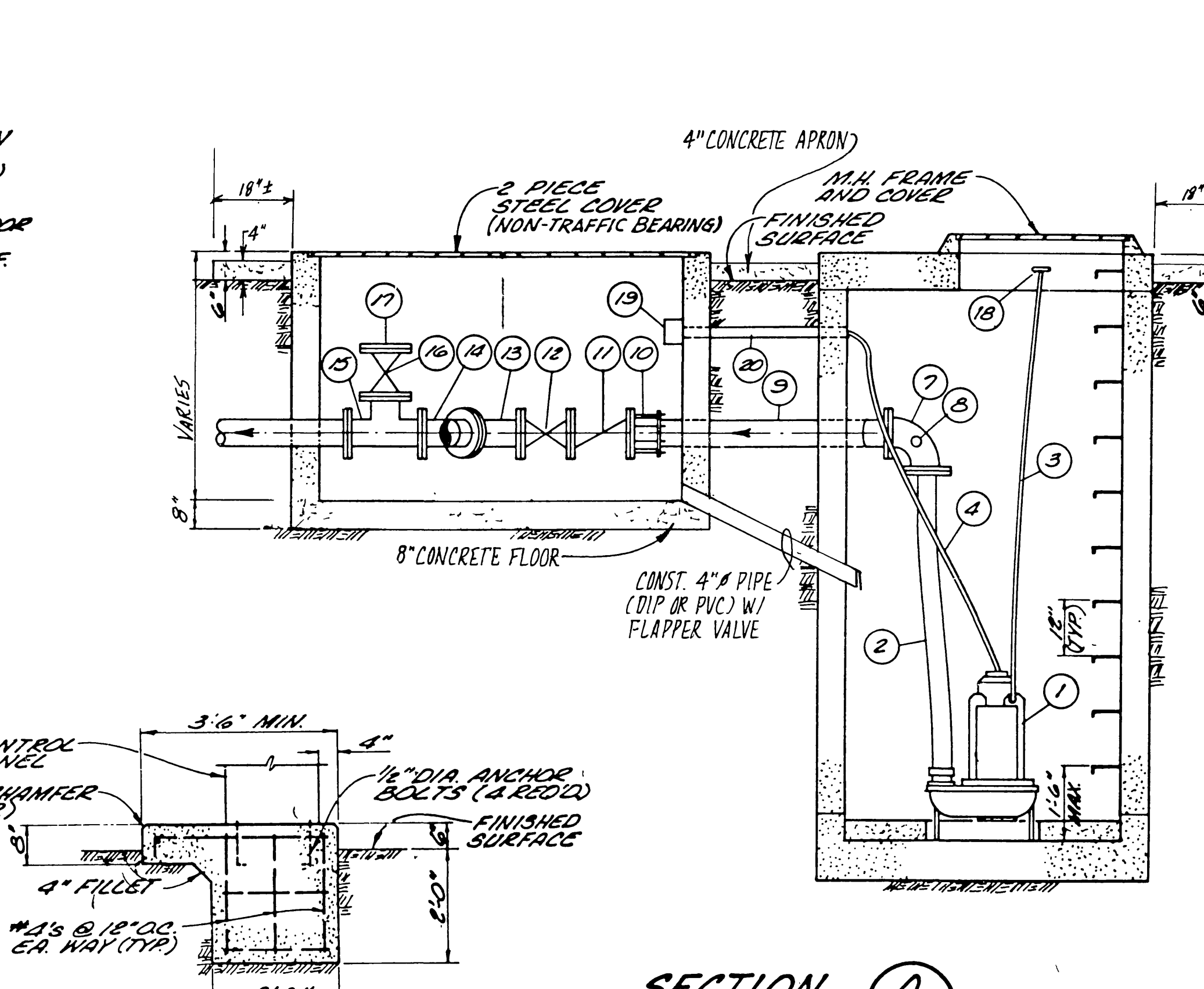
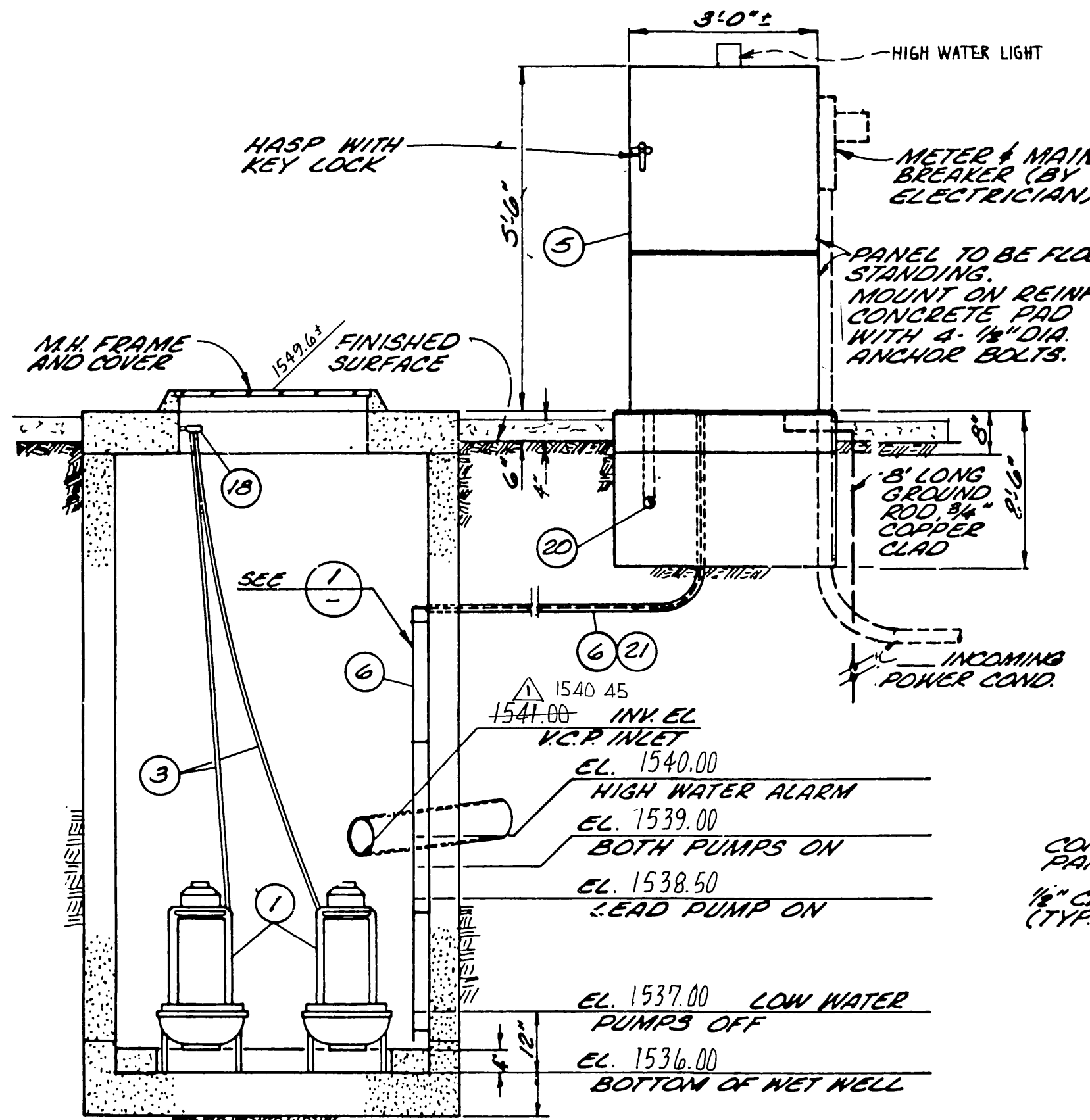


- PHENOLIC NAME PLATES**
- PUMP NO. 1
PUMP NO. 2
RUNNING
SEAL FAILURE
- (1) DOOR GAUGE
(2) PUMP C.B. (2 RECD)
(3) N-O-A AMBER (2 RECD)
(4) N-O-A SELECTOR SWITCH (2 RECD)
(5) CHARGED TIME METER (2 RECD)
(6) RESET BUTTON (2 RECD)
(7) SEAL FAIL LIGHT (RED) (2 RECD)

ESSCO PUMP CONTROL PANEL
NOT TO SCALE



- GENERAL NOTES**
- THE CONTRACTOR SHALL VERIFY ALL DIMENSIONS AND SITE CONDITIONS PRIOR TO BEGINNING CONSTRUCTION.
 - SUPERVISION FOR INSTALLATION, START-UP AND TESTING TO BE PROVIDED BY MANUFACTURER'S REPRESENTATIVE AS PART OF THE EQUIPMENT PURCHASE CONTRACT.
 - CONCRETE SHALL BE PORTLAND CEMENT CONCRETE AND SHALL DEVELOP A MINIMUM COMPRESSIVE STRENGTH OF 3000 P.S.I. AT 28 DAYS.
 - ALL FITTINGS AND VALVES SHALL BE CAST IRON, CLASS 185.
 - ALL ELECTRICAL WIRING AND EQUIPMENT INSTALLED IN THE "NET WELL" SECTION MUST COMPLY WITH ARTICLE 22 OF THE ELECTRICAL SAFETY ORDERS FOR CLASS 1, DIVISION 1, HAZARDOUS LOCATION PROVISIONS OF THE "NATIONAL ELECTRICAL CODE" AND ALL OTHER APPLICABLE LOCAL CODES AND ORDINANCES.
 - ALL CONDUITS SHALL BE P.V.C. SCHEDULE 80, OR APPROVED EQUIV.
 - ALL ELECTRICAL WIRE SHALL BE "RHN" OR "THN" COPPER CONDUCTOR, OR APPROVED EQUIV.
 - THE FLOOR OF THE NET WELL SHALL BE SMOOTH AND LEVEL.
 - THE DISCHARGE HOSE SHALL BE CUT TO LENGTH AND INSTALLED TIGHT.
 - PUMP MOTORS WILL PULL EXCESS AMPS IF RUNNING BACKWARDS.
 - INCOMING POWER CABLE 3" DIA. PUMP MOTOR CONTROL AND POWER CABLE 3" DIA.
 - ALL PRACTICES AND PROCEDURES, MATERIALS AND PLACEMENT OF MATERIALS SHALL CONFORM IN EVERY RESPECT TO THE STANDARD PLANS AND SPECIFICATIONS OF THE CITY OF RIVERSIDE.



MATERIAL SCHEDULE

NO.	DESCRIPTION	SIZE	QUANT.
1	SUBMERSIBLE SEWAGE PUMP, ESSCO MODEL 4312TF SIZE "A" HEAVY DUTY NON-CLOG VORTEX TORQUE FLUID PUMP, 200 G.P.M. AT 100 FT. T.D.H., 25 AMP, SUBMERSIBLE MOTOR 20 H.P. AT 1750 RPM, 2 1/2" DIA. COUPLER, 30' DISCHARGE WITH 25 FT. OF 3" WIRE CONTROL AND POWER CABLE, TWO SEPARATE SEALS, OIL LUBRICATED 30 DAY WARNING SYSTEM, NEMA THERMAL PROTECTION WITH ESSCO TOOL AGENT APPARATUS, (PATENT NO. 4,154,711)	4 1/2" x 12"	2 EA.
2	FLEXIBLE DISCHARGE HOSE, 75 LB. WORKING PRESSURE, 45 DEG. RESISTANT, WITH DOUBLE S.S. CL. 1" AND CHD. PLATED NIPPLES.	3"	10 LF.
3	LIFTING CABLE, 1/4" x 3/16" x 15' S.S. NYLON COVERED, 6300 LB. TENSILE STRENGTH.	1/4" x 3/16" x 15'	15 LF.
4	CONTROL AND POWER CABLE, SHALL BE U.L. APPROVED. REQUIRED FOR EACH PUMP MOTOR.	3" DIA.	50 LF.
5	PUMP CONTROL PANEL, ESSCO STYLE D, NEMA 3R RANAL PR. OF, DOUBLE DOOR, FACTORY WIRING AND TESTED; PRESET ELECTRIC CONTROL PANEL; INDICATING LIGHTS, AS REQUIRED; RELAYS, N.O.A.; COORDINATION STARTERS WITH QUICK TRIP HEATERS; PUMP INTERLOCKS; AND SUBMERGIBLE CONTROL SYSTEM WITH DUAL AIR COMPRESSORS AND AUTOMATIC LOW AIR TRANSFER (L.A. CITY TEST LABORATORY APPROVED).	18" x 18" x 12"	1 EA.
6	POLYETHYLENE BUBBLER TUBE 3/4" DIA. WITH S.S. MOUNTING CLAMPS AS REQUIRED.	3/4" DIA.	50 LF.
7	FLANGED CAST IRON 90° BEHD	90°	2 EA.
8	WASH DOWN AND VACUUM BREAKER (ESSCO PATENT)		2 EA.
9	FLANGED x PLAIN END CAST IRON SPOOL		2 EA.
10	FLANGED CAST IRON COUPLING ADAPTOR (BAKER STYLE 601 OR APP'VD. EQUIV.)		2 EA.
11	FLANGED SWING CHECK VALVE, W/ LEVER AND WEIGHT		2 EA.
12	FLANGED GATE VALVE, NON-RISING STEM		2 EA.
13	FLANGED CAST IRON 45° BEHD		2 EA.
14	FLANGED CAST IRON TRUE N/VE		1 EA.
15	FLANGED CAST IRON TEE		1 EA.
16	FLANGED GATE VALVE, NON-RISING STEM		1 EA.
17	CAST IRON BLIND FLANGE		1 EA.
18	EYE BOLT 3/4" DIA. S.S.		1 EA.
19	ELECTRICAL JUNCTION BOX (CROUSE-HINDS GUBDI OR APP'VD. EQUIV.)		1 EA.
20	2" DIA. ELECTRICAL CONDUIT (PVC SCH. 80 OR APP'VD. EQUIV.)	2" DIA.	LF.
21	3/4" DIA. CONDUIT (PVC SCH. 80 OR APP'VD. EQUIV.)	3/4" DIA.	LF.

BENCH MARK:
CITY OF RIVERSIDE B.M. F.B. 5 PK. NAIL AND TAG IN CONC. RETAINING WALL SECT. OF INTERSECTION OF ALESSANDRO BLVD. AND TRAUTWEIN RD
ELEVATION = 1407.635

B. E. BLANK CIVIL ENGINEERS
P.O. BOX 6307 ANAHEIM, CA. 92816 (714) 419-1070
PREPARED UNDER THE SUPERVISION OF:
Bruce E. Blank
BRUCE E. BLANK R.C.E. 26492 EXP. 3-31-92 DATE 9 AUG 88

CITY OF RIVERSIDE PUBLIC WORKS DEPARTMENT

APPROVED BY: *Bang* DATE: 3-1-88
PRINCIPAL ENGINEER
TRAFFIC DIVISION
SEWER TREATMENT PLANT

DESIGNED BY: DRAWN BY: CHECKED BY:

SEWER IMPROVEMENT PLAN FOR TRACT No. 21631

SEWER LIFT STATION

HORIZ. SCALE: 1" = VERT. SCALE: 1" =

AS BUILT 7/1/93 RIM
ACCOUNT NO.
S - 1530
SHEET 13 OF 13