

GENERAL NOTES

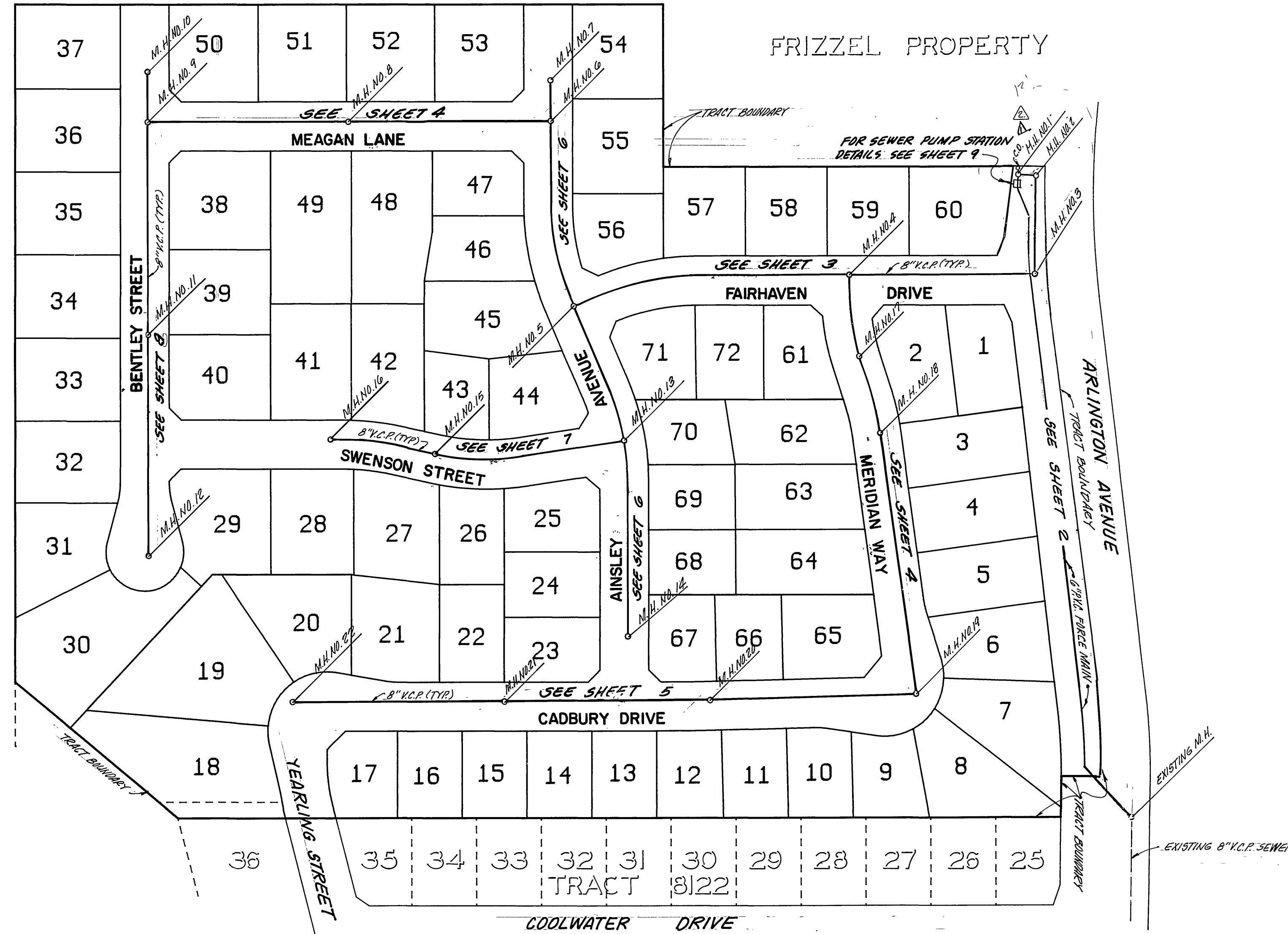
1. THE PRIVATE ENGINEER SIGNING THESE PLANS IS RESPONSIBLE FOR THE ACCURACY AND ACCEPTABILITY OF THE WORK HEREON. IN THE EVENT OF DISCREPANCIES ARISING DURING CONSTRUCTION THE PRIVATE ENGINEER SIGNING THE PLANS SHALL BE RESPONSIBLE FOR DETERMINING AN ACCEPTABLE SOLUTION AND REVISING THE PLANS FOR APPROVAL BY THE CITY.
2. IT SHALL BE THE RESPONSIBILITY OF THE CONTRACTOR TO CLEAR THE RIGHT-OF-WAY IN ACCORDANCE WITH THE PROVISIONS OF LAW AS IT AFFECTS EACH UTILITY INCLUDING IRRIGATION LINES AND APPURTENANCES AND AT NO COST TO THE CITY.
3. CONSTRUCTION SHALL BE IN ACCORDANCE WITH THE CITY OF RIVERSIDE DEPARTMENT OF PUBLIC WORKS, STANDARD DRAWINGS, STANDARD DRAWING NO. 10 AND THE STANDARD SPECIFICATIONS FOR PUBLIC WORKS CONSTRUCTION, CURRENT EDITION.
4. LOCATION OF LATERALS TO BE DETERMINED IN THE FIELD AT THE DIRECTION OF THE OWNER. AVOID CONFLICT WITH PROPOSED AND/OR EXISTING FACILITIES.
5. CONTRACTOR IS TO VERIFY EXISTING SEWER ELEVATION PRIOR TO CONSTRUCTION.
6. THE SEWER CONTRACTOR SHALL ADJUST MANHOLES TO FINAL GRADE AFTER PAVING IS COMPLETED.
7. NO FINISHED FLOOR ELEVATION SHALL BE LESS THAN 4' ABOVE THE SEWER FLOW LINE AT THE POINT OF CONNECTION WITHOUT HAVING A PROPER BACKWATER VALVE INSTALLED IN THE LATERAL.
8. A PLUG SHALL BE INSTALLED AND WILL REMAIN IN PLACE WHERE THE NEW SEWER CONNECTS WITH THE EXISTING SEWER UNTIL THE NEW SEWER IS ACCEPTED BY THE CITY OF RIVERSIDE.
9. ALL MANHOLES TO BE RIVERSIDE CITY STD. NO. 500.
10. ALL FLAGGED ELEVATIONS SHALL BE STAKED IN THE FIELD BY PRIVATE ENGINEER.
11. THE CONTRACTOR SHALL CALL IN A LOCATION REQUEST TO UNDERGROUND SERVICE ALERT (USA), PHONE NO. 1-800-422-4133, TWO WORKING DAYS BEFORE DIGGING. NO CONSTRUCTION PERMIT WILL BE ISSUED BY THE PUBLIC WORKS DEPARTMENT INVOLVING EXCAVATION FOR UNDERGROUND FACILITIES UNLESS THE APPLICANT HAS BEEN PROVIDED AN INQUIRY IDENTIFICATION NUMBER BY U.S.A.
12. THE DEVELOPER SHALL BE RESPONSIBLE FOR THE PRESERVING OR RE-ESTABLISHING AND REFERENCING SURVEY MONUMENTS DESTROYED, DISTURBED OR BURIED AS A RESULT OF CONSTRUCTION SHOWN HEREON.
13. QUANTITIES SHOWN ARE FOR INFORMATION ONLY AND THE CITY OF RIVERSIDE IS NOT RESPONSIBLE FOR THEIR ACCURACY.

SEWER IMPROVEMENT PLANS

FOR

TRACT 22759

VACANT LAND



INDEX MAP
SCALE: 1"=100'

PRIVATE ENGINEER'S NOTICE TO CONTRACTORS

THE EXISTENCE AND LOCATION OF ANY UNDERGROUND UTILITIES OR STRUCTURES SHOWN ON THESE PLANS ARE OBTAINED BY A SEARCH OF AVAILABLE RECORDS AND TO THE BEST OF OUR KNOWLEDGE, THERE ARE NO EXISTING UTILITIES EXCEPT THOSE SHOWN ON THIS PLAN. THE CONTRACTOR IS REQUIRED TO TAKE ALL PRECAUTIONARY MEASURES TO PROTECT THE UTILITIES SHOWN, AND ANY OTHER LINES OR STRUCTURES NOT SHOWN ON THESE PLANS, AND IS RESPONSIBLE FOR THE PROTECTION OF, AND ANY DAMAGE TO THESE LINES OR STRUCTURES.

CONSTRUCTION CONTRACTOR AGREES THAT IN ACCORDANCE WITH GENERALLY ACCEPTED CONSTRUCTION PRACTICES, CONSTRUCTION CONTRACTOR WILL BE REQUIRED TO ASSUME SOLE AND COMPLETE RESPONSIBILITY FOR JOB SITE CONDITIONS DURING THE COURSE OF CONSTRUCTION OF THIS PROJECT, INCLUDING SAFETY OF ALL PERSONS AND PROPERTY; THAT THIS REQUIREMENT SHALL APPLY CONTINUOUSLY AND NOT BE LIMITED TO NORMAL WORKING HOURS, AND CONSTRUCTION CONTRACTOR FURTHER AGREES TO, DEFEND, INDEMNIFY, AND HOLD DESIGN PROFESSIONAL AND OWNER HARMLESS FROM ANY AND ALL LIABILITY, REAL OR ALLEGED, IN CONNECTION WITH THE PERFORMANCE OF WORK ON THIS PROJECT.

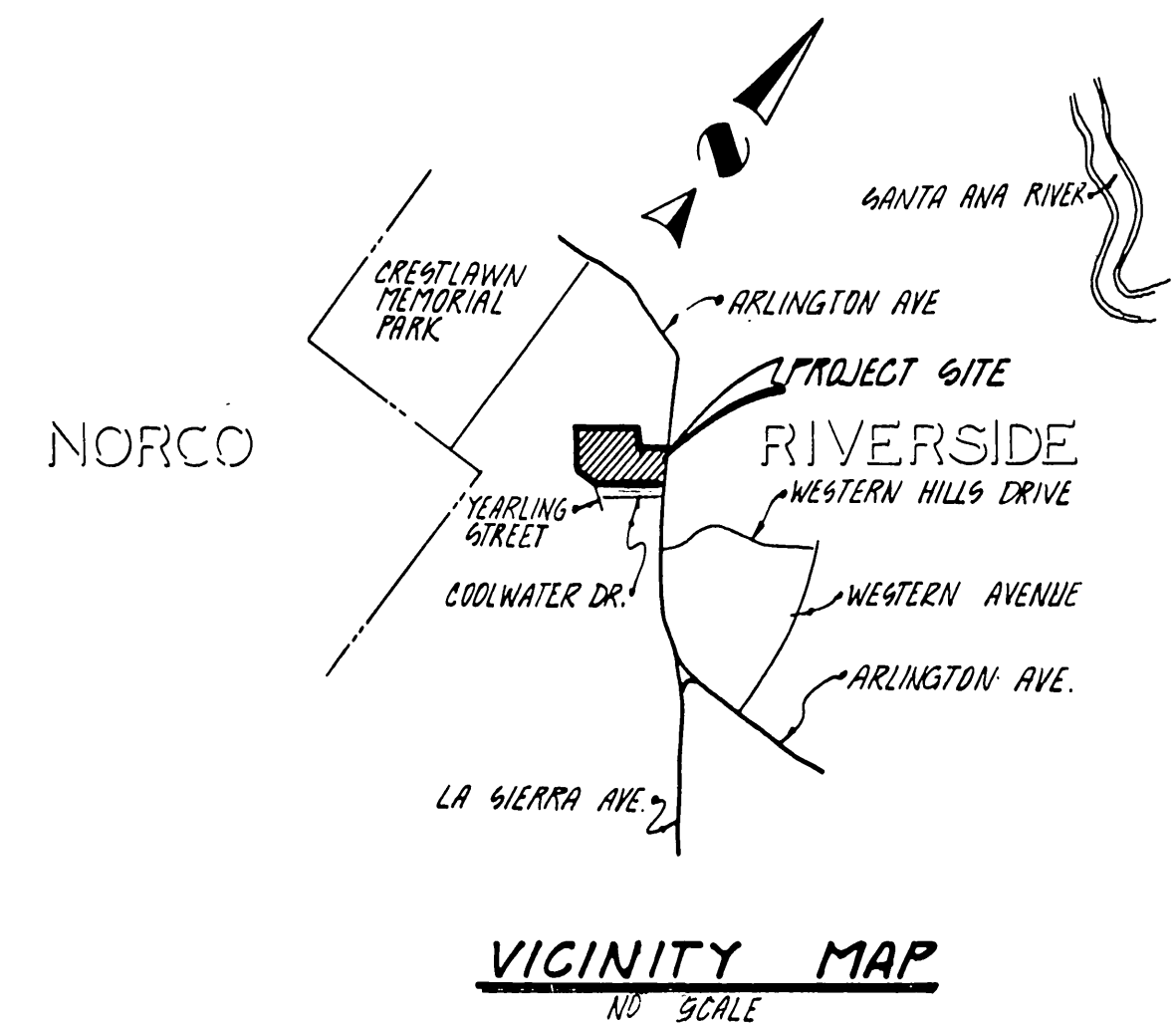
THE CONTRACTOR SHALL BE RESPONSIBLE TO REPORT DISCREPANCIES IN PLANS AND/OR FIELD CONDITIONS IMMEDIATELY TO THE DESIGN ENGINEER FOR RESOLUTION PRIOR TO CONSTRUCTION, AND SHALL BE RESPONSIBLE FOR DISCREPANCIES NOT SO REPORTED AND RESOLVED.



CONSTRUCTION NOTES AND ESTIMATED QUANTITIES *

1	CONSTRUCT 8" V.C.P.	4126 L.F.
2	CONSTRUCT MANHOLES PER CITY OF RIVERSIDE STD. DWG. NO. 500.	4,088 EA
3	CONSTRUCT 4" V.C.P. LATERALS PER CITY OF RIVERSIDE STD. DWG. NO. 502.	2,860 L.F.
4	CONSTRUCT 5.0" DIA. MANHOLES PER CITY OF RIVERSIDE STD. DWG. NO. 500.	2 EA
5	CONSTRUCT 8" P.V.C. FORCE MAIN	802.5 L.F.
6	CONSTRUCT SEWER PUMP STATION PER DETAILS ON SHEET 9	1 EA
7	REMOVE AND REPLACE EXISTING A.C. PAVEMENT	320 S.F.
8	RECONSTRUCT EXISTING MANHOLE BOTTOM	1 EA
9	CONSTRUCT 6" P.V.C. 45° ELL	1 EA
10	CONSTRUCT 6" P.V.C. 28 1/2° ELL	2 EA
11	CONSTRUCT THROUGH BLOCK PER CWD-030	3 EA
12	CONSTRUCT 6" P.V.C. 1 1/4° ELL	1 EA
13	CONSTRUCT 8" SEWER CLEANOUT PER CITY OF RIVERSIDE STD. DWG. NO. 560	1 EA

* QUANTITIES SHOWN HEREON ARE FOR PERMIT AND/OR BIDDING PURPOSES ONLY, AND SHOULD NOT BE USED FOR BIDDING. CONTRACTOR IS RESPONSIBLE TO DETERMINE HIS OWN QUANTITIES AND BID A COMPLETE JOB.



CITY OF RIVERSIDE
WATER SYSTEM

APPROVED: *R. McArthur* DATE: 12-9-88

BENCH MARK:
BENCH MARK NO. G2-A
BRASS DISC. STAMPED (G2-A) IN
CONC. IN MOST W'LY TRAFFIC ISLAND
AT ARLINGTON AVE. AND LA SIERRA
AVE. (FB 735/58A)

ELEV. = 865.079

CSL ENGINEERING, INC.
1307 W. Sixth Street Suite 216-B Corona, CA 91720 (714) 737-8190

PREPARED UNDER THE SUPERVISION OF:
Richard A. Scianini 5-23-88
RICHARD A. SCIANNI, R.C.E. 25917 DATE:

REVISIONS

MARK	REVISIONS	DATE
1	REVISED 8" V.C.P. QUANTITY & MANHOLE CLEANOUT	7/27/89
2	REVISED 8" V.C.P. QUANTITY & ADD CLEANOUT	11/19/89

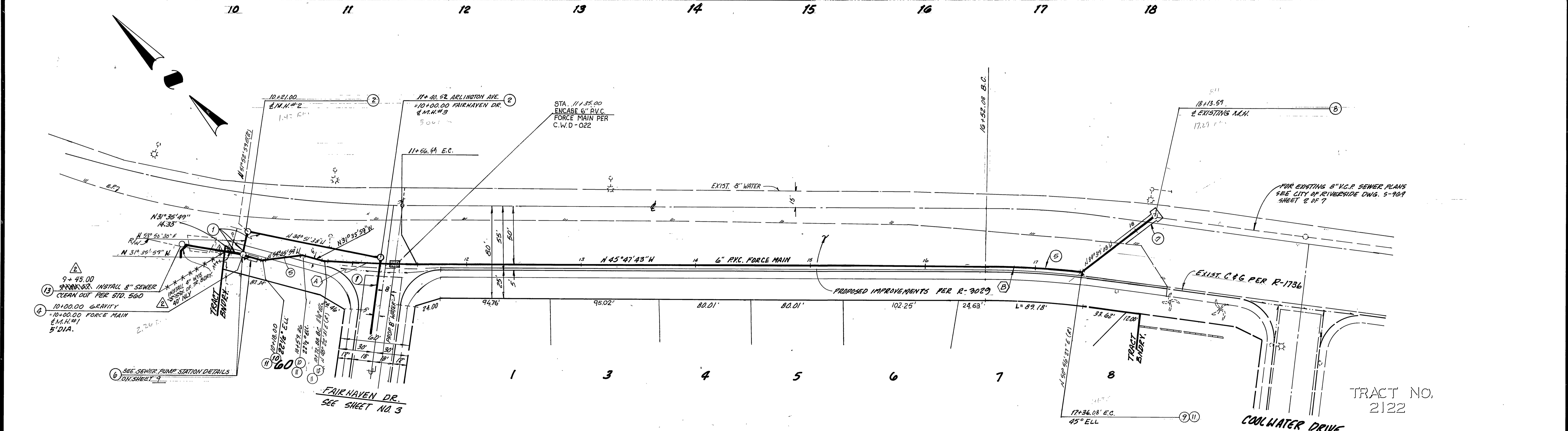
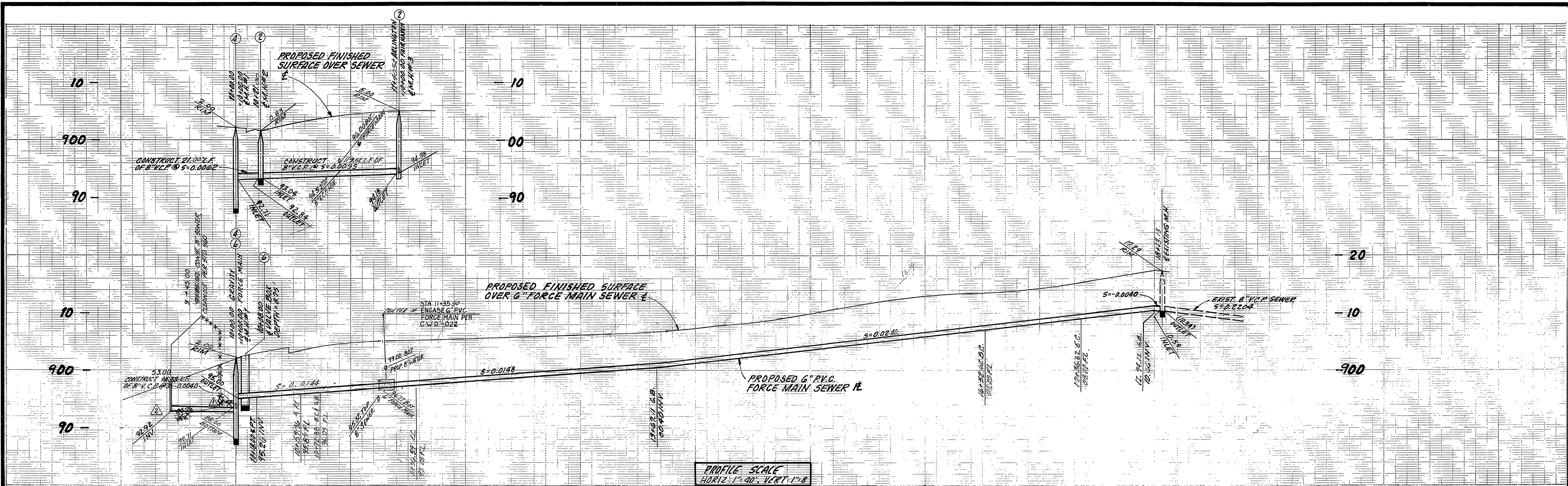
DESIGNED BY: *P.L.L.* DRAWN BY: *P.L.L.* CHECKED BY: *J.L.L.*

CITY OF RIVERSIDE
PUBLIC WORKS DEPARTMENT

APPROVED BY	DATE	BY
<i>Barry Beal</i>	11-27-88	<i>VE</i>
TRAFFIC DIVISION	DATE	DATE
12/10/88	11-23-88	11-23-88
CHIEF P.W. ENGINEER	DATE	DATE
12/89	12/89	12/89

TITLE SHEET
SEWER IMPROVEMENT PLANS
FOR
TRACT 22759

ACCOUNT NO.
5-1534
SHEET 1 of 9



ARLINGTON AVENUE

CURVE DATA			
Δ	R	L	T
(A) 4° 10' 15"	1150.00'	83.71'	41.87'
(B) 6° 44' 10"	714.49'	84.00'	42.05'



CITY OF RIVERSIDE
WATER SYSTEM

APPROVED: *R. McNaught*
DATE: 12-9-88

BENCH MARK:
BENCH MARK NO. 62-A
86435 DISC STAMPED (62-A) IN CONC. IN MOST
NLY TRAFFIC ISLAND AT ARLINGTON AVE AND LA
SIERRA AVE. (FB135/58A)
ELEV = 845.079

CSL ENGINEERING, INC.
119 MAPLE ST., SUITE N CORONA, CA 91720

PREPARED UNDER THE SUPERVISION OF:
Richard A. Sciani
RICHARD A. SCIANNI R.C.E. 25917 DATE: 5-23-88

REVISIONS

DESIGNED BY: P.L.L. DRAWN BY: P.S.L. CHECKED BY: J.L.L.

CITY OF RIVERSIDE
PUBLIC WORKS DEPARTMENT

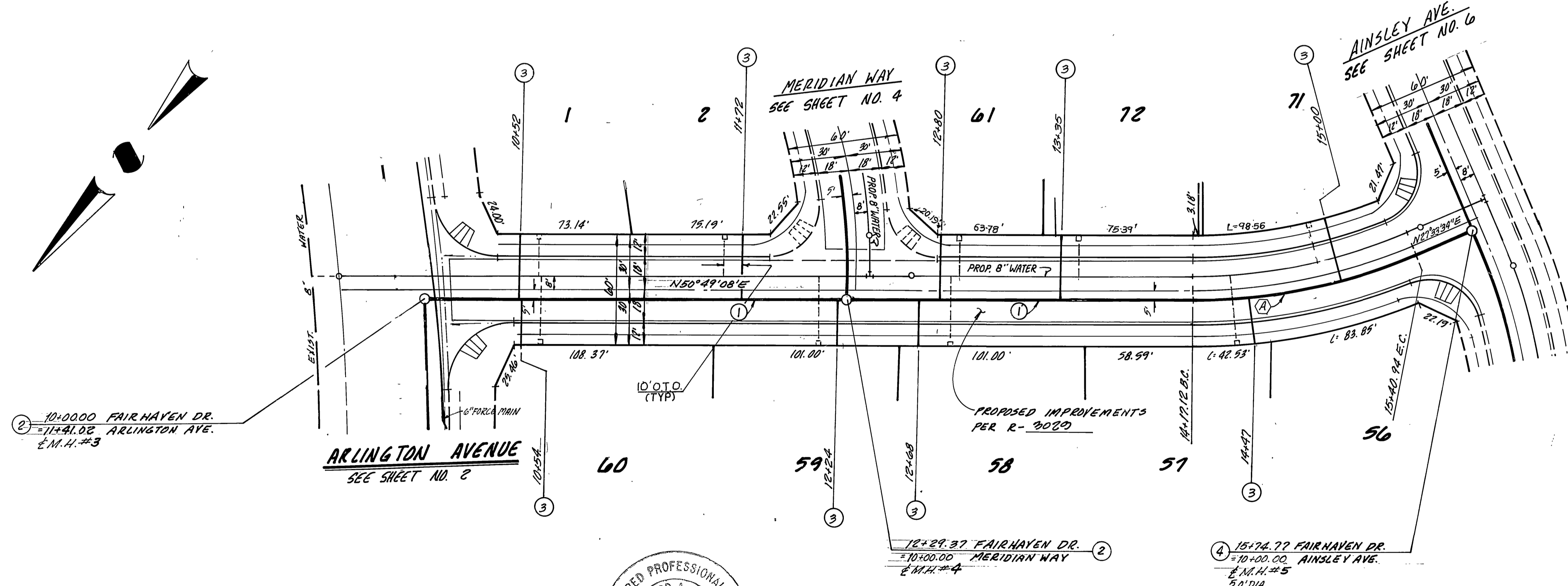
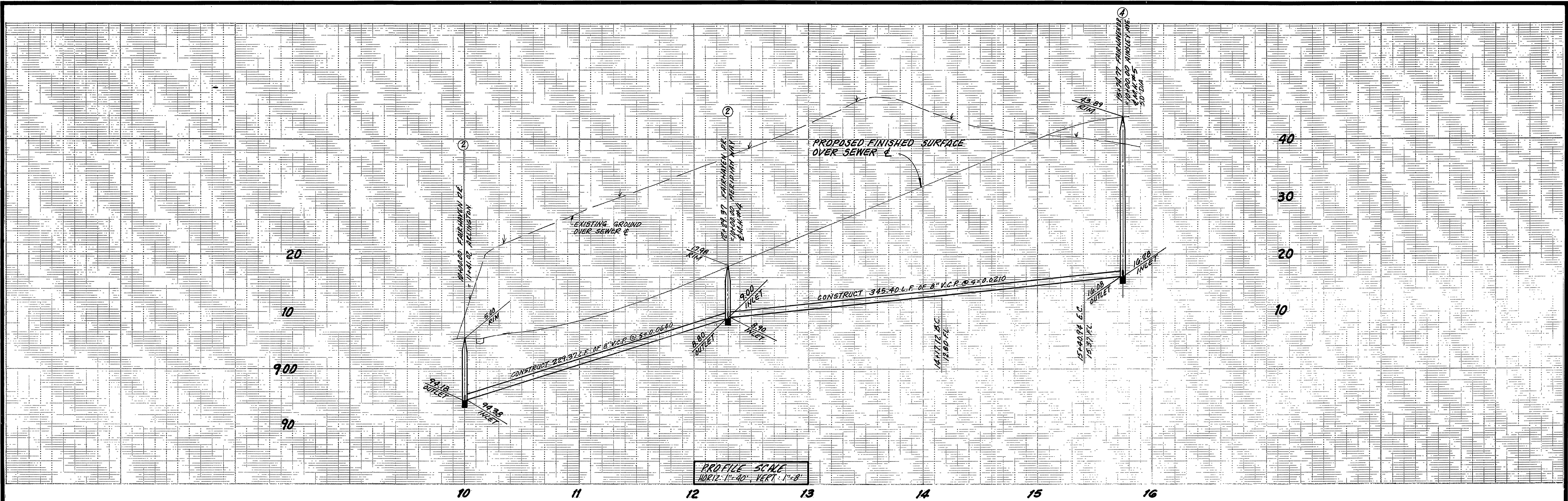
APPROVED BY: *Benny Beal*
DATE: 1/23/89

SEWER IMPROVEMENT FOR PLANS

TRACT 22759
ARLINGTON AVENUE

ACCOUNT NO. **S-1534**
SHEET 2 OF 9

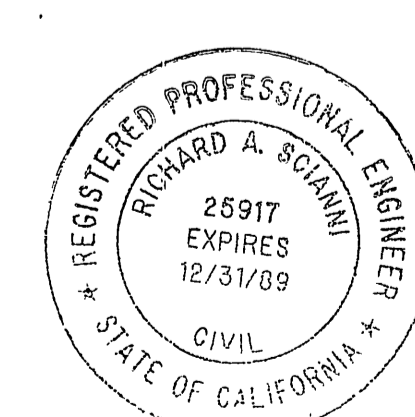
HORIZ. SCALE: 1" = 40' VERT. SCALE: 1" = 8'



10+000 FAIRHAVEN DR.
= 1144.02 ARLINGTON AVE.
E.M.H.#3

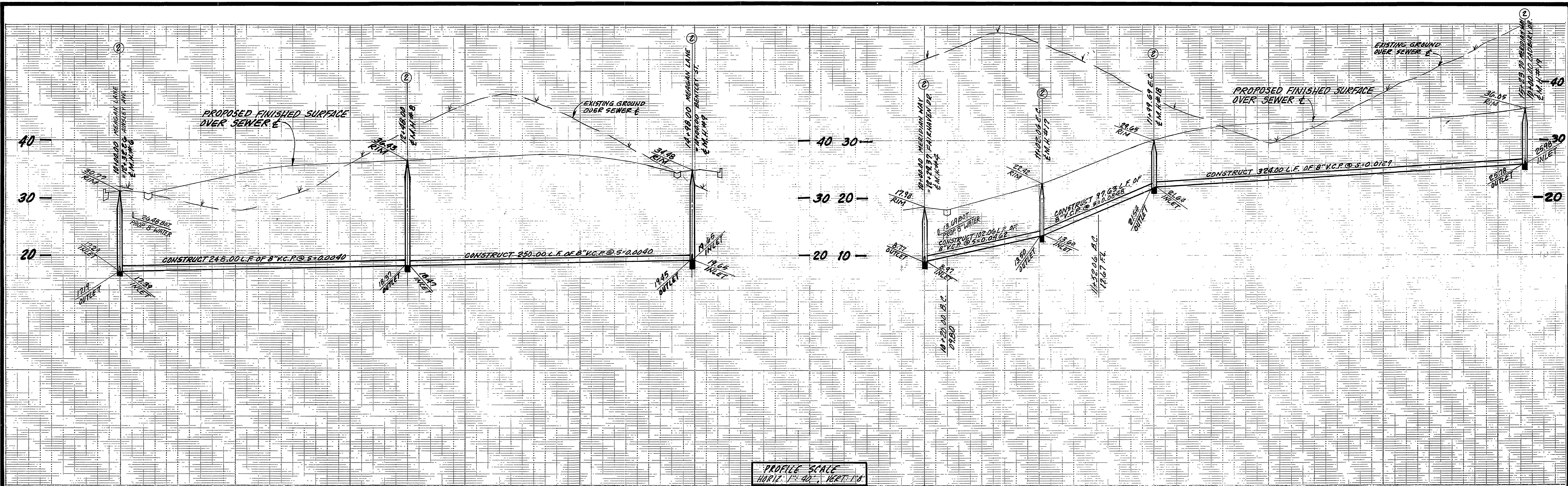
ARLINGTON AVENUE
SEE SHEET NO. 2

FAIRHAVEN DRIVE

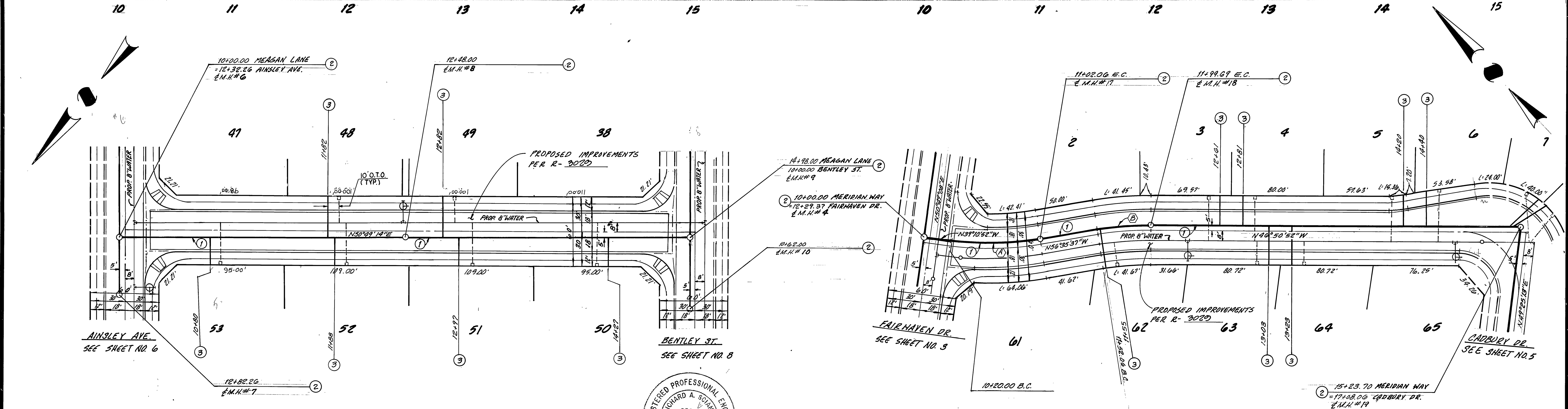


CURVE DATA			
A	R	L	T
(A) 23°15'34"	305.00'	123.82'	62.77'

CITY OF RIVERSIDE WATER SYSTEM APPROVED: <i>R. Mc Grath</i> DATE: 12-9-88	BENCH MARK: BENCH MARK NO. 62-A BRASS DISC STAMPED (62-A) IN CONC. IN MOST WLY TRAFFIC ISLAND AT ARLINGTON AVE. AND LA SIERRA AVE. (FB 735/38A) ELEV. = 865.079	CSL ENGINEERING, INC. 119 MAPLE ST., SUITE N CORONA, CA 91720 PREPARED UNDER THE SUPERVISION OF: <i>Richard A. Scianini</i> RICHARD A. SCIANNI R.C.E. 25917 DATE: 5-23-88	CITY OF RIVERSIDE PUBLIC WORKS DEPARTMENT APPROVED BY: <i>Barry Paul</i> DATE: 12-21-88 PUBLIC WORKS DIRECTOR TRAFFIC DIVISION: <i>12/23/88</i> CHIEF P.W. ENGINEER: <i>12/31/89</i>	SEWER IMPROVEMENT FOR TRACT 22759 FAIRHAVEN DRIVE HORIZ. SCALE: 1" = 40' VERT. SCALE: 1" = 8' INDEXED 1-31-89 411	ACCOUNT NO. 5-1534 SHEET 3 OF 9

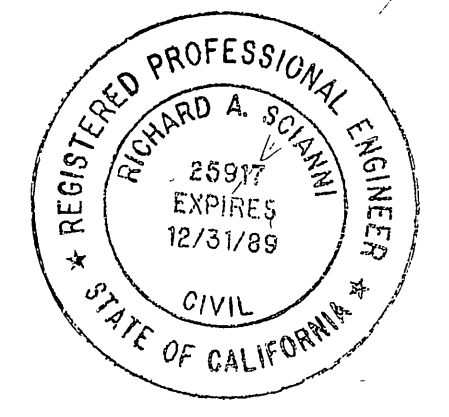


PROFILE SCALE
HORIZ. 1" = 40' VERT. 1" = 8'



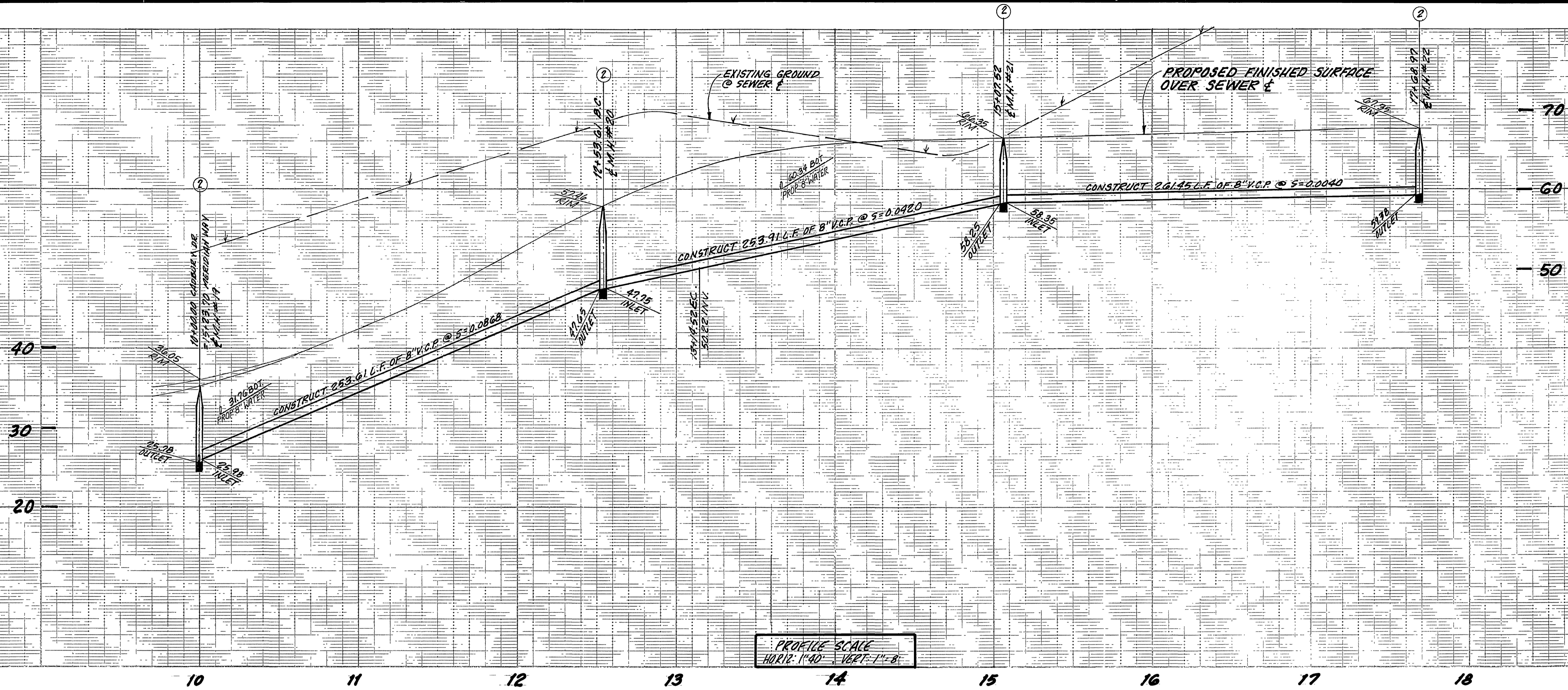
MEAGAN LANE

MERIDIAN WAY

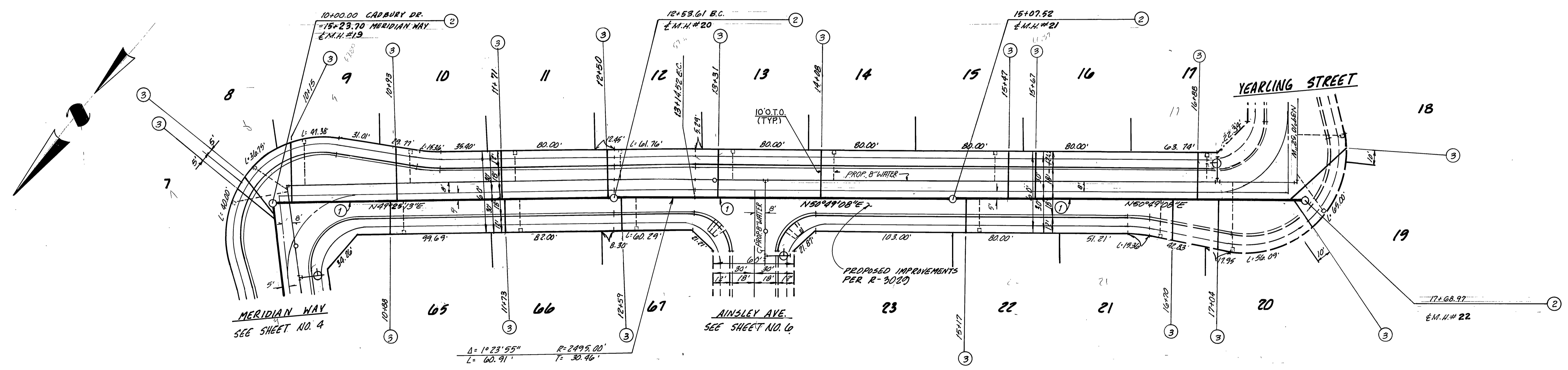


CURVE DATA			
Δ	R	L	T
(A) 17°24'25"	270.00'	82.05'	41.38'
(B) 9°44'45"	280.00'	47.63'	23.87'

CITY OF RIVERSIDE WATER SYSTEM APPROVED: <i>R. Mc Grath</i> 12-9-88 DATE	BENCH MARK: BENCH MARK NO. 62-A BRASS DISC STAMPED (62-A) IN CONC. IN MOUNT W/EN TRAFFIC SIGNAL AT INTERSECTION AVE. AND LA SIERRA AVE (FB 735) 93A) ELEV. = 845.079	CSL ENGINEERING, INC. 119 MAPLE ST., SUITE N CORONA, CA 91720 PREPARED UNDER THE SUPERVISION OF: <i>Richard A. Scianni</i> 5-23-88 RICHARD A. SCIANNI R.C.E. 25917 DATE	CITY OF RIVERSIDE PUBLIC WORKS DEPARTMENT APPROVED BY: <i>Danny Paul</i> PUBLIC WORKS DIRECTOR DATE: 1/23/89	SEWER IMPROVEMENT FOR TRACT 22759 MEAGAN LANE MERIDIAN WAY PLANS ACCOUNT NO. 5-1534 SHEET 4 OF 9



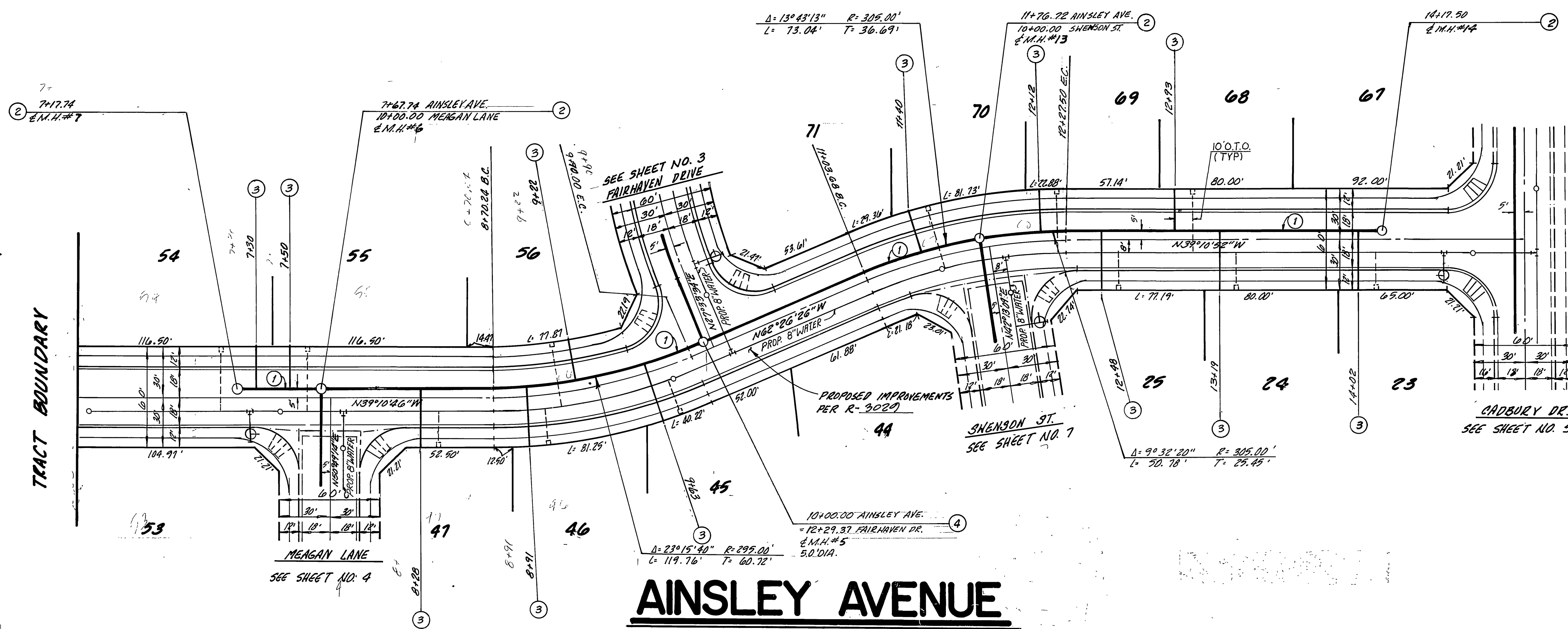
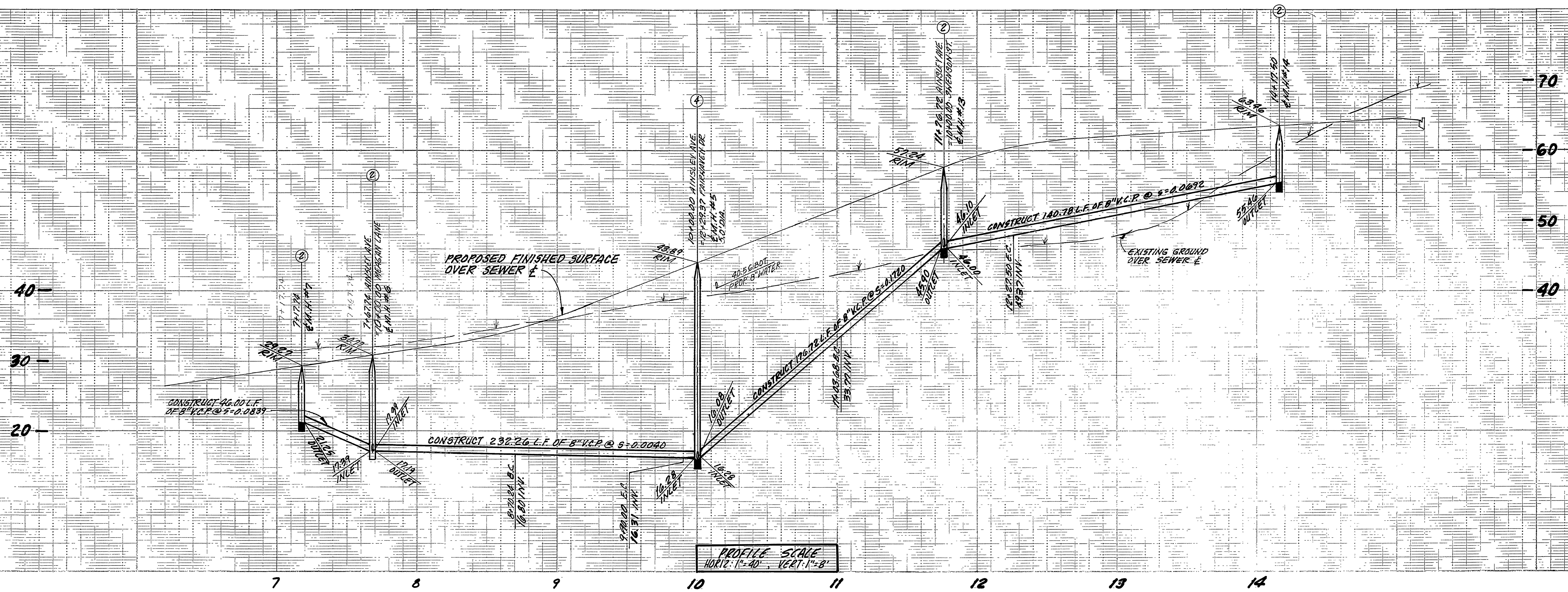
PROFILE SCALE
HORIZ. 1"=40' VERT. 1"=8'



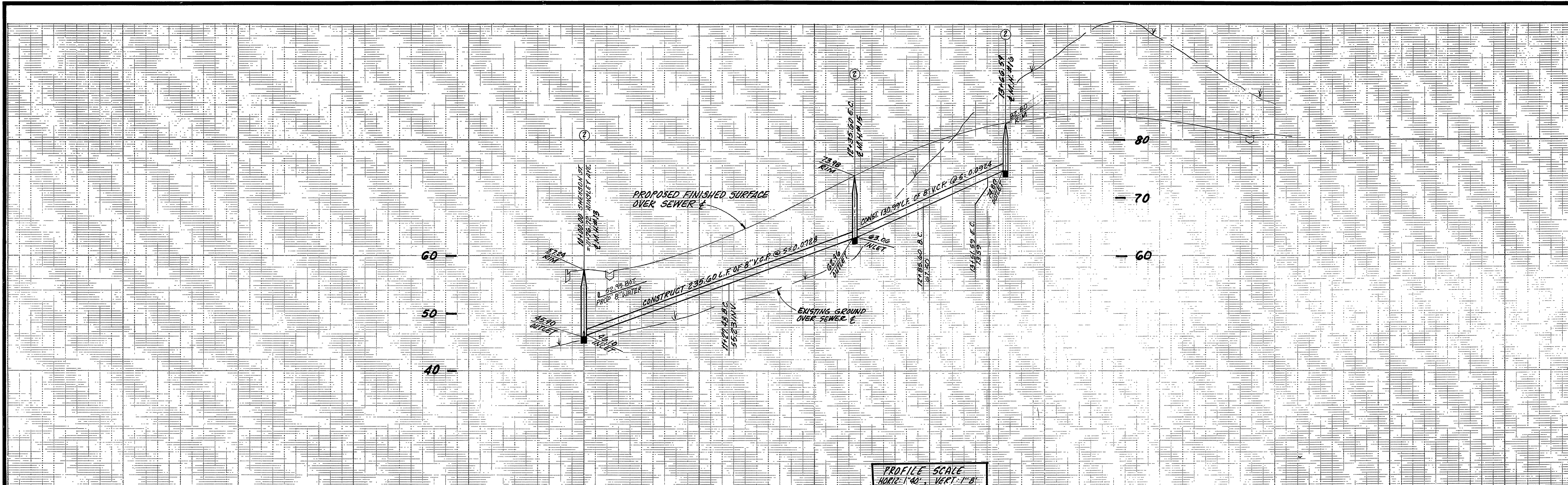
CADBURY DRIVE



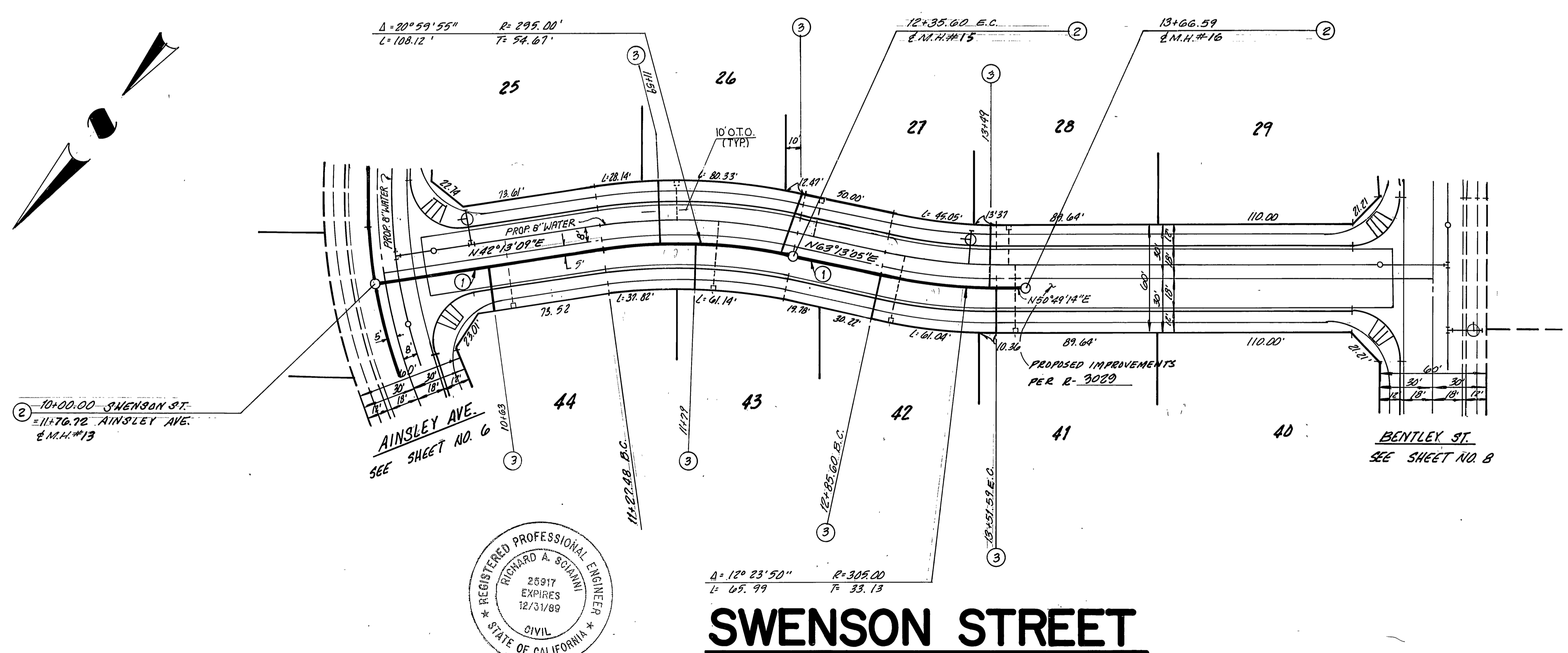
CITY OF RIVERSIDE WATER SYSTEM APPROVED: <i>R. Mc Math</i> DATE: 12-9-88	BENCH MARK: BENCH MARK NO. 62-A BEASS DIV. STAMPED (62-A) IN CONC. IN MOST WLY TRAFFIC (SCAND AT ARKINGTON) AVE AND LA SIERRA AVE (ELEV: 865.079)	CSL ENGINEERING, INC. 119 MAPLE ST., SUITE N-CORONA, CA 91720 PREPARED UNDER THE SUPERVISION OF: <i>Richard A. Scianni</i> 5-23-88 RICHARD A. SCIANNI R.C.E. 25917 DATE	CITY OF RIVERSIDE PUBLIC WORKS DEPARTMENT APPROVED BY: <i>Darryl Paul</i> PRINCIPAL ENGINEER DATE: 12-27-88 PARK DEPARTMENT TRAFFIC DIVISION CHIEF P.W. ENGINEER DATE: 1/23/89	SEWER IMPROVEMENT FOR TRACT 22759 CADBURY DRIVE HORIZ. SCALE: 1"=40' VERT. SCALE: 1"=8' INDEXED 1-31-89 4H	ACCOUNT NO. 5-1534 SHEET 5 OF 9



CITY OF RIVERSIDE WATER SYSTEM APPROVED: <i>R. Mc Anath</i> 12-9-88 DATE	BENCH MARK: BENCH MARK NO. 62-A BRASS DISC STAMPED (G 2-A) IN CONC. IN CONC. IN MOUNT NLY TRAFFIC ISLAND AT ARLINGTON AVE AND LA SERRA AVE FB 1351 50A ELEV. = 865.079	CSL ENGINEERING, INC. 119 MAPLE ST., SUITE N CORONA, CA 91720 PREPARED UNDER THE SUPERVISION OF: <i>Richard A. Scianini</i> 5-23-88 RICHARD A. SCIANNI R.C.E. 25917 DATE	CITY OF RIVERSIDE PUBLIC WORKS DEPARTMENT APPROVED BY: <i>Bruce Bell</i> PRINCIPAL ENGINEER DATE 12-21-88 TRAFFIC DIVISION CHIEF P.W. ENGINEER DATE 1/23/89	SEWER IMPROVEMENT FOR PLANS TRACT 22759 AINSLEY AVENUE SHEET 6 OF 9	ACCOUNT NO. 5-1534 6 9



PROFILE SCALE
HORIZ: 1"=40' VERT: 1"=8'



SWENSON STREET

CITY OF RIVERSIDE
WATER SYSTEM

APPROVED: *R. Mc Anath* 12-9-88
DATE

BENCH MARK:
BRASS MARK NO. 62-A
BRASS DISC STAMPED (62-A) IN CONC. IN
MIDST WLY TRAFFIC 15' S AND AT ARKINGTON AVE.
AND LA SIERRA AVE. (FB735/58A)
ELEV. 865.079

CSL ENGINEERING, INC.
119 MAPLE ST., SUITE N CORONA, CA 91720

PREPARED UNDER THE SUPERVISION OF:
Richard A. Scianni 5-23-89
RICHARD A. SCIANNI R.C.E. 25917 DATE

MARK	REVISIONS	APPR. DATE

DESIGNED BY: R.L.L. DRAWN BY: D.C.S. CHECKED BY: J.V.L.

CITY OF RIVERSIDE
PUBLIC WORKS DEPARTMENT

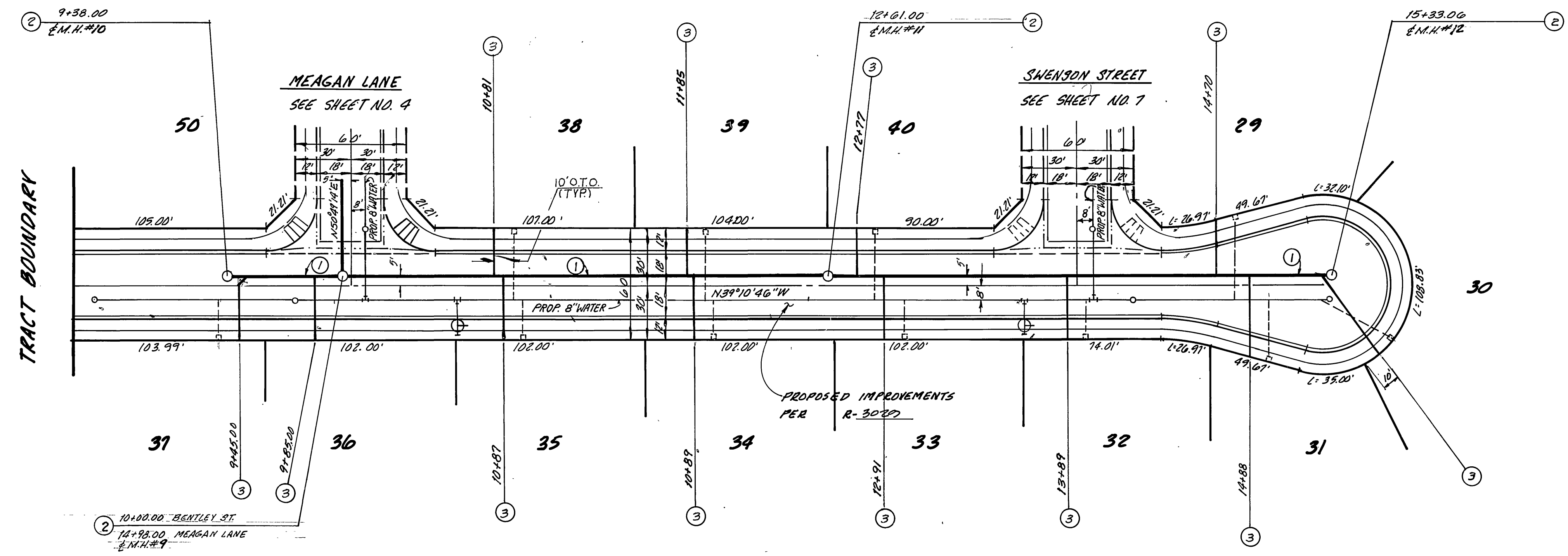
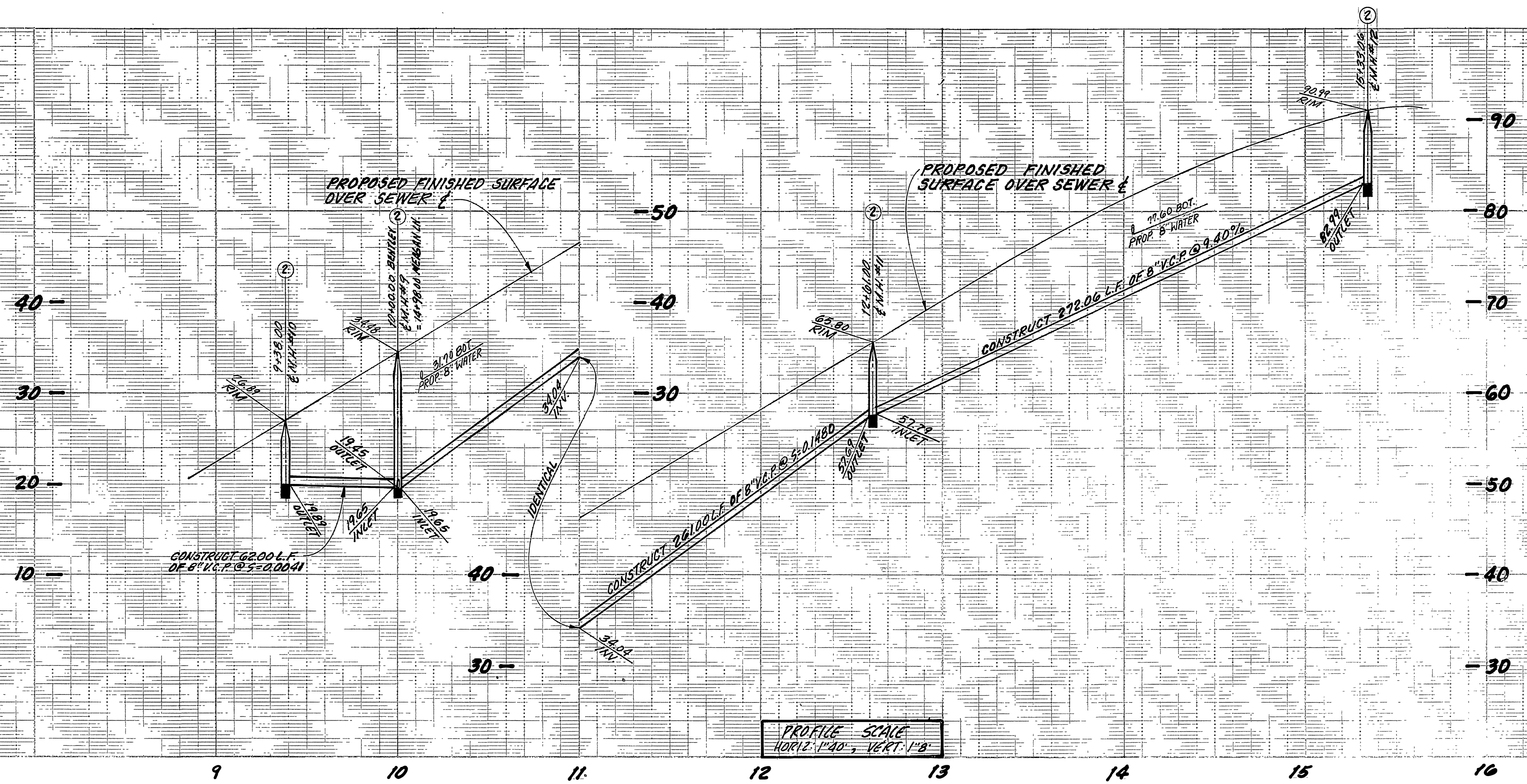
APPROVED BY	DATE	BY
PRINCIPAL ENGINEER	12-21-88	<i>W.E.</i>
PARK DEPARTMENT		
TRAFFIC DIVISION	12/23/89	<i>W.E.</i>
CHIEF P.W. ENGINEER	12/23/89	<i>W.E.</i>

APPROVED BY: *Benny Beal*
PUBLIC WORKS DIRECTOR
DATE: 1/23/89

SEWER IMPROVEMENT FOR
TRACT 22759
SWENSON STREET

HORIZ. SCALE: 1"=40' VERT. SCALE: 1"=8'

ACCOUNT NO.
5-1534
7 9
SHEET OF



BENTLEY STREET



CITY OF RIVERSIDE
WATER SYSTEM
APPROVED: *R. Mc Grath* DATE: 12-9-88

BENCH MARK:
BENCH MARK NO 62-A
BASED ON STAMPED (62-A) IN CONC. IN
NEW TRAFFIC ISLAND AT ARLINGTON AVE. AND
LA SIERRA AVE. (PBY35190A)
ELEV: 865.079

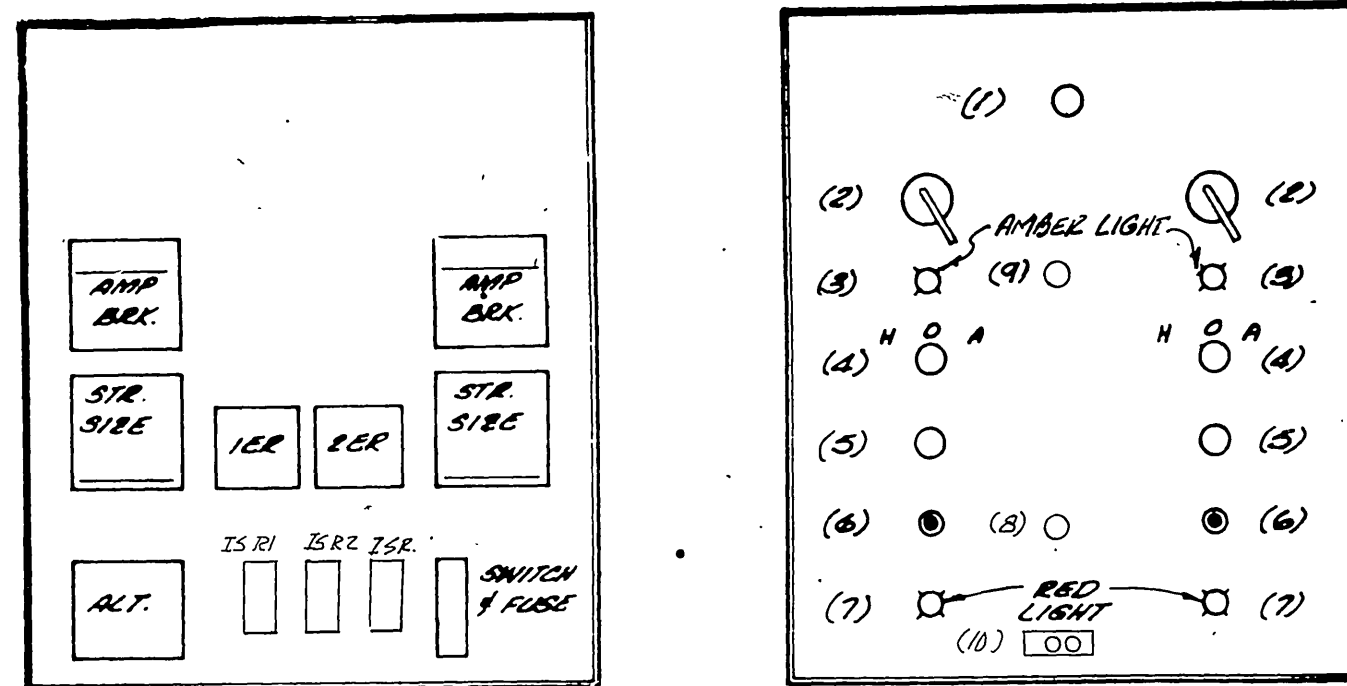
CSL ENGINEERING, INC.
119 MAPLE ST., SUITE N CORONA, CA 91720
PREPARED UNDER THE SUPERVISION OF:
Richard A. Scianni 5-23-88
RICHARD A. SCIANNI R.C.E. 25917 DATE:

MARK	REVISIONS	APPR.	DATE

CITY OF RIVERSIDE
PUBLIC WORKS DEPARTMENT
APPROVED BY: *Darryl Beal*
DATE: 12-27-88
PRINCIPAL ENGINEER
TRAFFIC DIVISION
CHIEF P. W. ENGINEER

SEWER IMPROVEMENT FOR
TRACT 22759
BENTLEY STREET
HORIZ. SCALE: 1" = 40'
VERT. SCALE: 1" = 8'

ACCOUNT NO.
5-1534
SHEET 8 OF 9

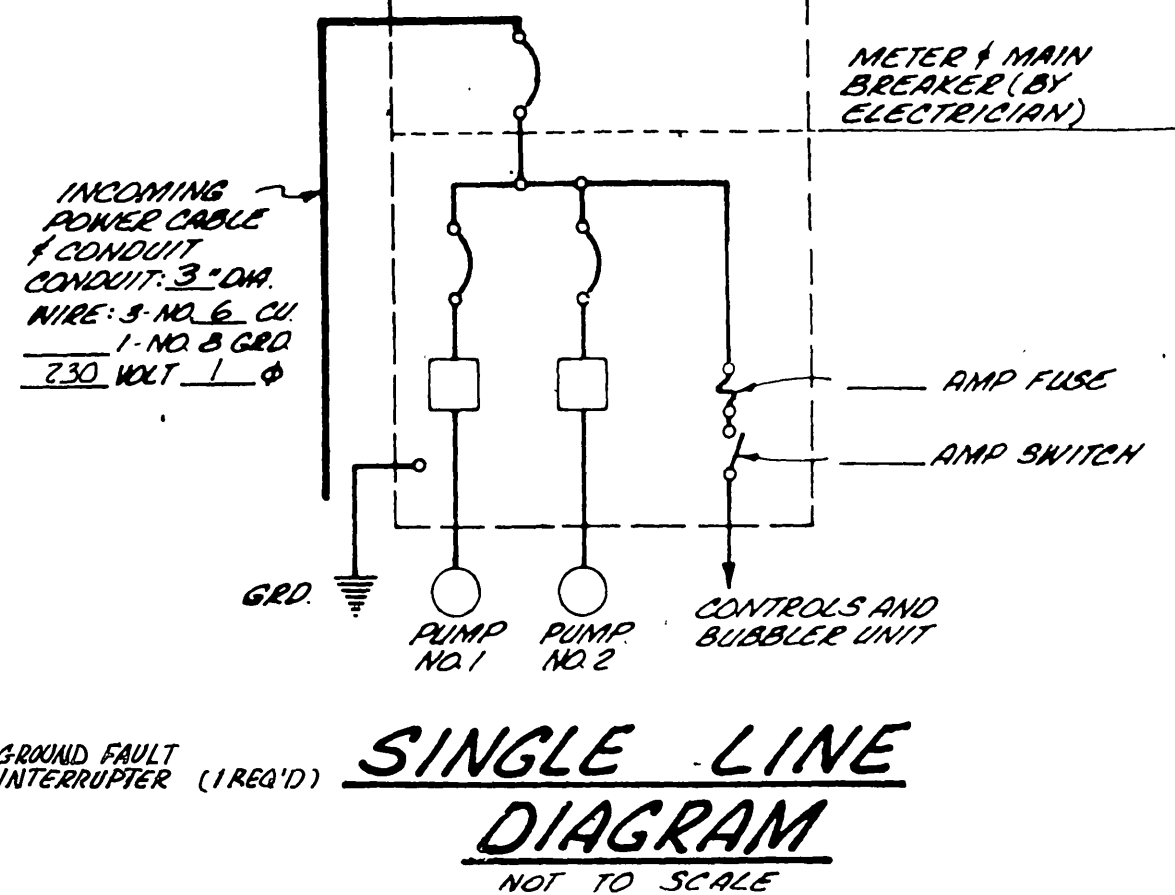


ESSCO PUMP CONTROL PANEL
NOT TO SCALE

VIEW WITH INNER DOOR OPEN
VIEW OF INNER DOOR

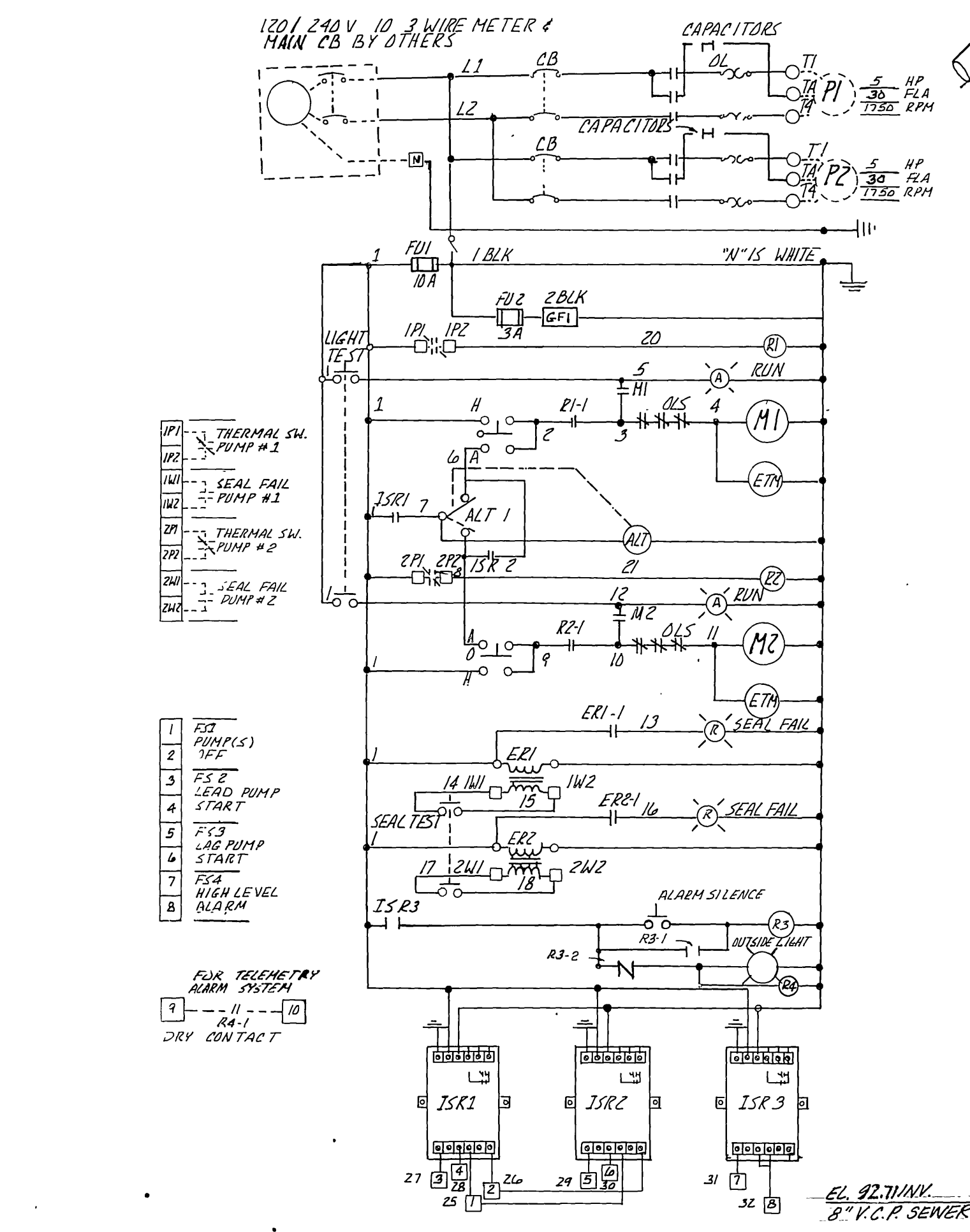
PHENOLIC NAME PLATES
PUMP NO. 1
PUMP NO. 2
RUNNING
SEW. FAILURE

(1) ALARM SILENCE BUTTON (1 REQ'D)
(2) PUMP C.B. (2 REQ'D)
(3) RUN LIGHT (AMBER) (2 REQ'D)
(4) H.O.A. SELECTOR SWITCH (2 REQ'D)
(5) ELAPSED TIME METER (2 REQ'D)
(6) RESET BUTTON (2 REQ'D)
(7) SEAL FAIL LIGHT (RED) (2 REQ'D)
(8) SEAL FAIL TEST BUTTON (2 REQ'D)
(9) PUMP TEST BUTTON (2 REQ'D)
(10) GROUND FAULT INTERRUPTER (1 REQ'D)



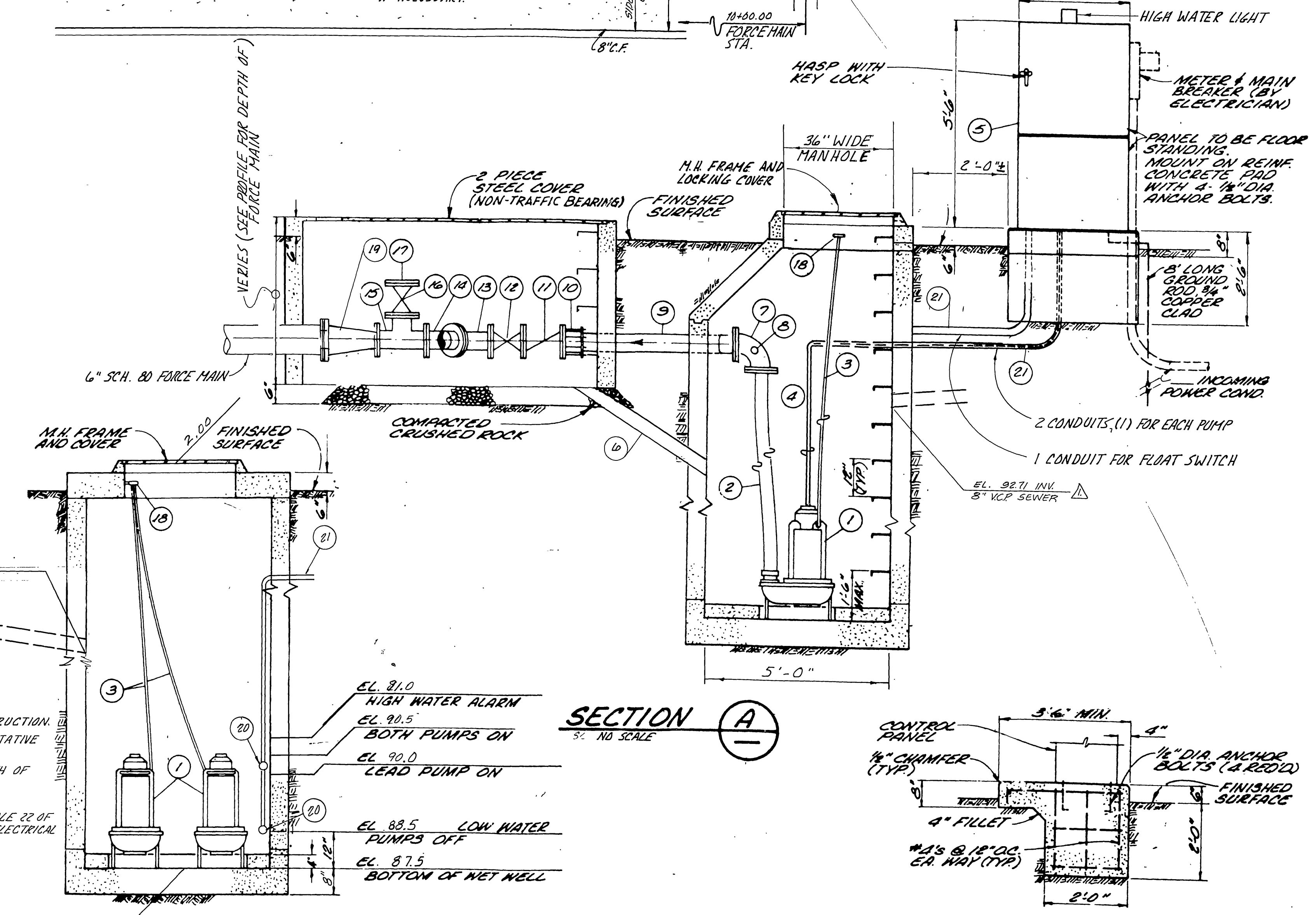
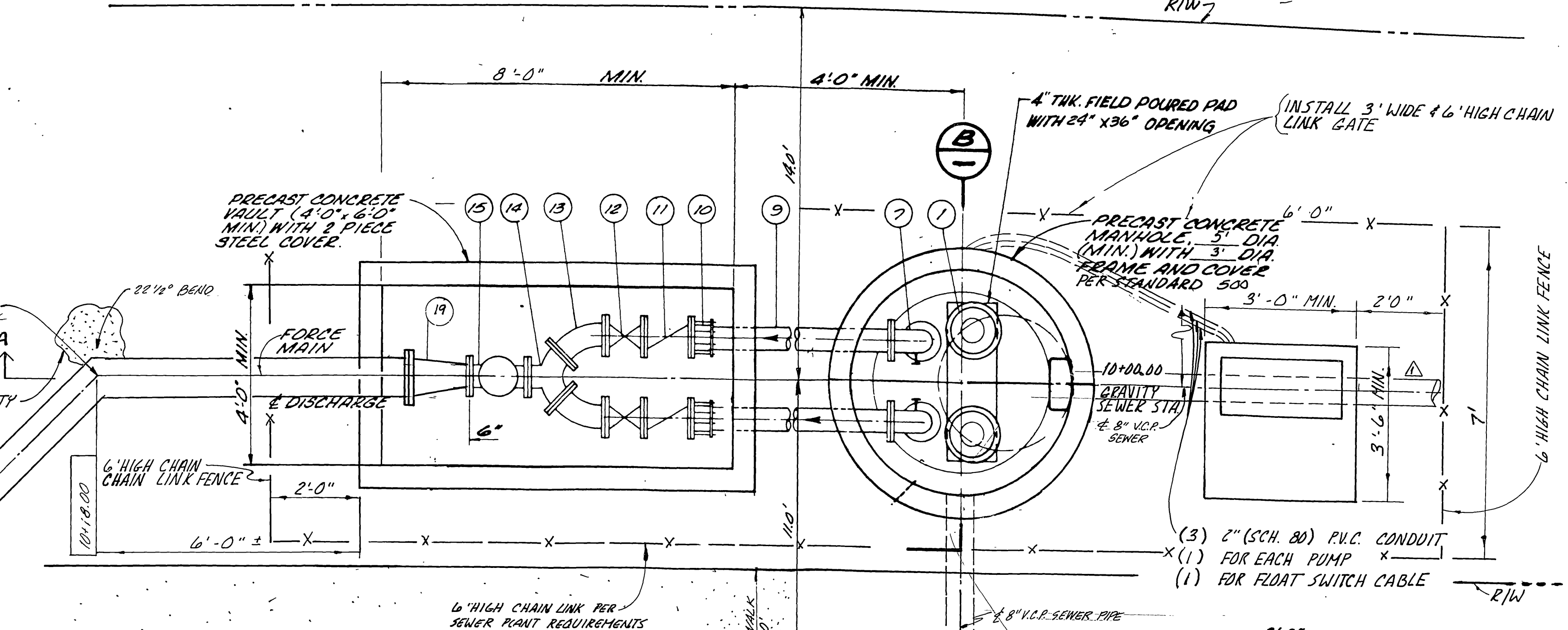
MATERIAL SCHEDULE

NO.	DESCRIPTION	SIZE	QUANT.
1	SUBMERSIBLE SEWAGE PUMP, ESSCO MODEL 493 SIZE 3" HEAVY DUTY NON-CLOG VORTEX TORQUE FLUID PUMP, 160 G.P.M. AT 36 FT. TDH, BELTDRIVE SUBMERSIBLE MOTOR 5 HP AT 1750 R.P.M. U.L. TEMP. CLASS 1, GROUP D WITH 25 FT. OF 3 WIRE CONTROL AND POWER CABLE. TWO SEPARATE SEALS, OIL LUBRICATED 30 DAY WARNING SYSTEM, N.C. THERMAL PROTECTION WITH ESSCO COOL AGENT APPARATUS, (PATENT NO. 4,154,711)		2 EA
2	FLEXIBLE DISCHARGE HOSE, 75ID WORKING PRESSURE, ACID RESISTANT WITH DOUBLE S.S. CLAMPS AND CAD. PLATED NIPPLES.		LF
3	LIFTING CABLE, 1/4" x 3/16" x 16' S.S. NYLON COVERED, 6300LB TENSILE STRENGTH		LF
4	CONTROL AND POWER CABLE SHALL BE U.L. APPROVED (1 REQUIRED FOR EACH PUMP MOTOR).		LF
5	PUMP CONTROL PANEL ESSCO STYLE D, NEMA 3R WINDING, FIBER GLASS DOOR, FACTORY WIRING AND TESTED, PRESET ELECTRICAL CONTROL PANEL, INDICATING LIGHTS, AS REQUIRED, RELAYS, H.O.A., COMBINATION STARTERS WITH QUICK TRIP HEATERS, PUMP INTERLOCKERS		1 EA
6	4" SCHEDULE 80 DRAIN PIPE		2 LF
7	FLANGED CAST IRON 90° BEND	4"	2 EA
8	WASH DOWN AND VACUUM BREAKER (ESSCO PATENT)		2 EA
9	FLANGED x PLAIN END CAST IRON SPOOL	4"	2 EA
10	FLANGED CAST IRON COUPLING ADAPTOR (BARKER STYLE 601 OR APPROV. EQUAL)	4"	2 EA
11	FLANGED SWING CHECK VALVE, W/LEVER AND WEIGHT	4"	2 EA
12	FLANGED GATE VALVE, NON-RISING STEM.	4"	2 EA
13	FLANGED CAST IRON 45° BEND	4"	2 EA
14	FLANGED CAST IRON TRUE WYE	4"	1 EA
15	FLANGED CAST IRON TEE	4"	1 EA
16	FLANGED GATE VALVE, NON-RISING STEM	4"	1 EA
17	CAST IRON BLIND FLANGE	4"	1 EA
18	EYE BOLT 3/4" DIA. S.S.		2 EA
19	FLANGED 4" x 6" CAST IRON REDUCER		1 EA
20	PEABODY BARNES 73612 MERCURY FLOAT SWITCH		4 EA
21	2" DIA. CONDUIT (PVC, SCH. 80 OR APPROV. EQUAL)	1/2" DIA.	LF



GENERAL NOTES

- THE CONTRACTOR SHALL VERIFY ALL DIMENSIONS AND SITE CONDITIONS PRIOR TO BEGINNING CONSTRUCTION.
- SUPERVISION FOR INSTALLATION, START-UP AND TESTING TO BE PROVIDED BY MANUFACTURER'S REPRESENTATIVE AS PART OF THE EQUIPMENT PURCHASE CONTRACT.
- CONCRETE SHALL BE PORTLAND CEMENT CONCRETE AND SHALL DEVELOP A MINIMUM COMPRESSIVE STRENGTH OF 3000 P.S.I. AT 28 DAYS.
- ALL FITTING AND VALVES SHALL BE CAST IRON, CLASS 125.
- ALL ELECTRICAL WIRING AND EQUIPMENT INSTALLED IN THE "WET WELL" SECTION MUST COMPLY WITH ARTICLE 22 OF THE ELECTRICAL SAFETY ORDERS FOR CLASS 1, HAZARDOUS LOCATION PROVISIONS OF THE NATIONAL ELECTRICAL CODE AND ALL OTHER APPLICABLE LOCAL CODES AND ORDINANCES.
- ALL CONDUITS SHALL BE P.V.C. SCHEDULE 80, OR APPROVED EQUAL.
- ALL ELECTRICAL WIRE SHALL BE "RH" OR "THW" COPPER CONDUCTOR, OR APPROVED EQUAL.
- THE FLOOR OF THE WET WELL SHALL BE SMOOTH AND LEVEL.
- THE DISCHARGE HOSE SHALL BE CUT TO LENGTH AND INSTALLED TAUT.
- PUMP MOTORS WILL PULL EXCESS AMPS IF RUNNING BACKWARDS.
- ALL PRACTICES AND PROCEDURES, MATERIALS AND PLACEMENT OF MATERIALS SHALL CONFORM IN EVERY RESPECT TO THE STANDARD PLANS AND SPECIFICATIONS OF THE CITY OF RIVERSIDE.
- ALL EXPOSED CONCRETE AND/OR CAST IRON FITTINGS ARE TO BE COATED WITH EPOXY (600-M) AND EPOXY TO BE INSTALLED PER THE MANUFACTURER'S RECOMMENDATIONS.



BENCH MARK:
BENCH MARK NO. G2-A
BRASS DISC STAMPED (G2-A) IN CONC. IN MOST W'LY TRAFFIC ISLAND AT ARLINGTON AVE. AND LA SIERRA AVE. (FB 735/58A)
ELEV. = 865.079

CSL ENGINEERING, INC.
1807 W. Sixth Street Suite 216-B Corona, CA 91720 (714) 737-8190
PREPARED UNDER THE SUPERVISION OF:
Richard A. Scanni 5/23/88
RICHARD A. SCIANNI R.C.E. 25917 DATE:

CITY OF RIVERSIDE PUBLIC WORKS DEPARTMENT

APPROVED BY	DATE	BY	DATE
PRINCIPAL ENGINEER		APPROVED BY	
PARK DEPARTMENT		PUBLIC WORKS DIRECTOR	
TRAFFIC DIVISION			
CHIEF P.W. ENGINEER	1-23		
DESIGNED BY	2-6	DRAWN BY	2-6
CHECKED BY	2-6		

DATE 1/23/89

SEWER IMPROVEMENT PLANS FOR TRACT 22759 SEWER PUMP STATION

ACCOUNT NO. **5-1534**
SHEET **9** OF **9**

HORIZ. SCALE: 1" = AS NOTED VERT. SCALE: 1" = AS NOTED