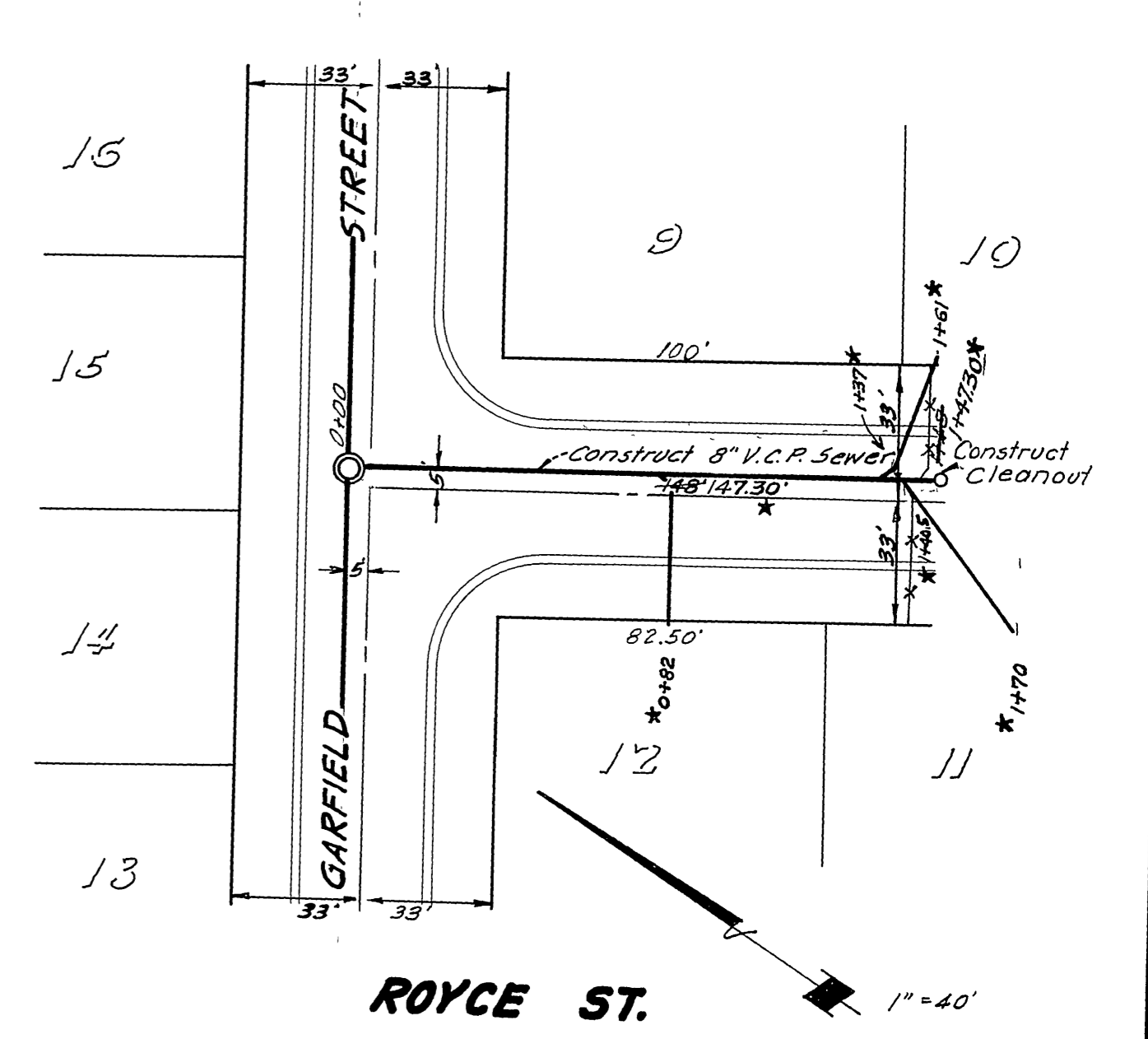
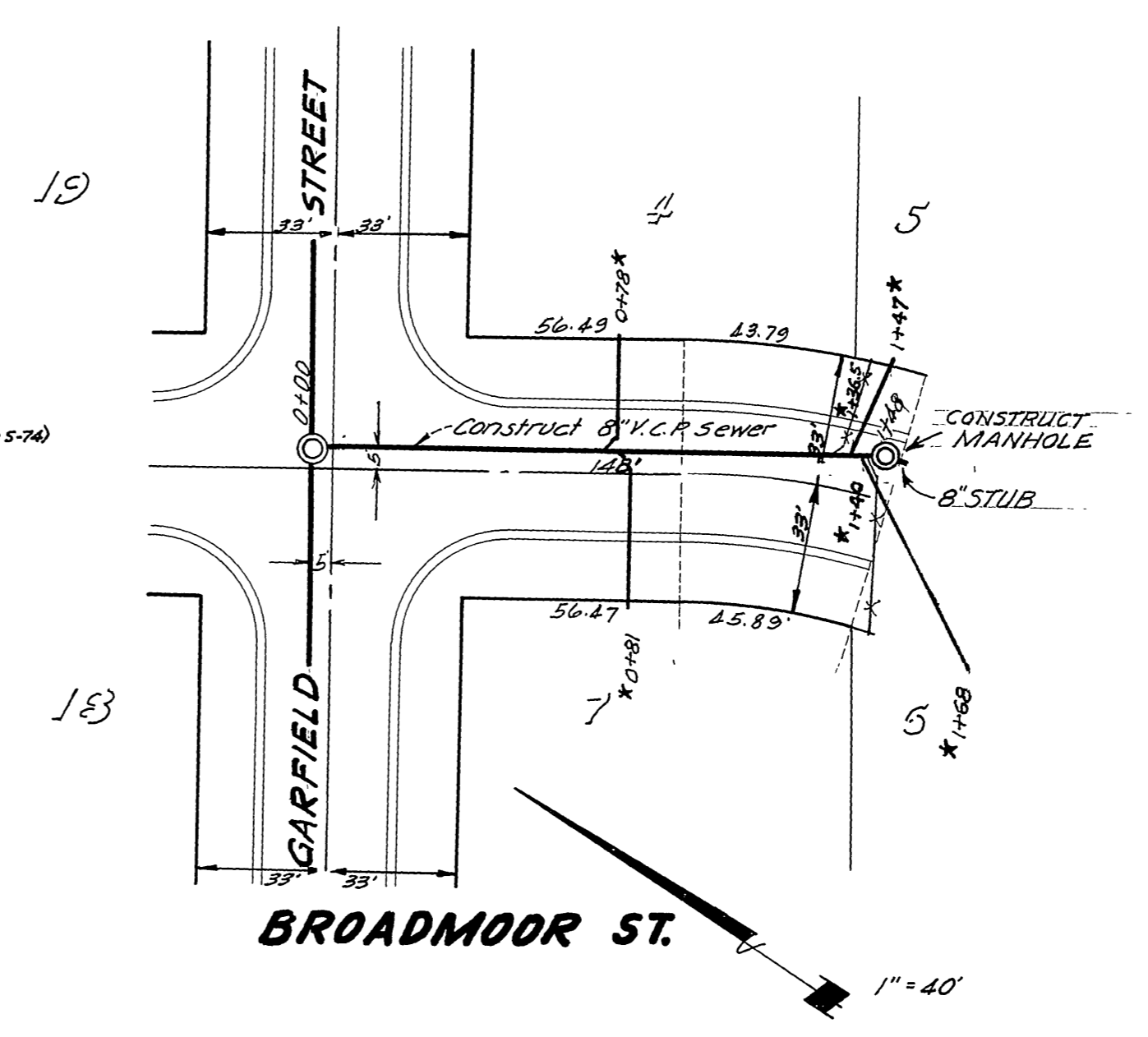
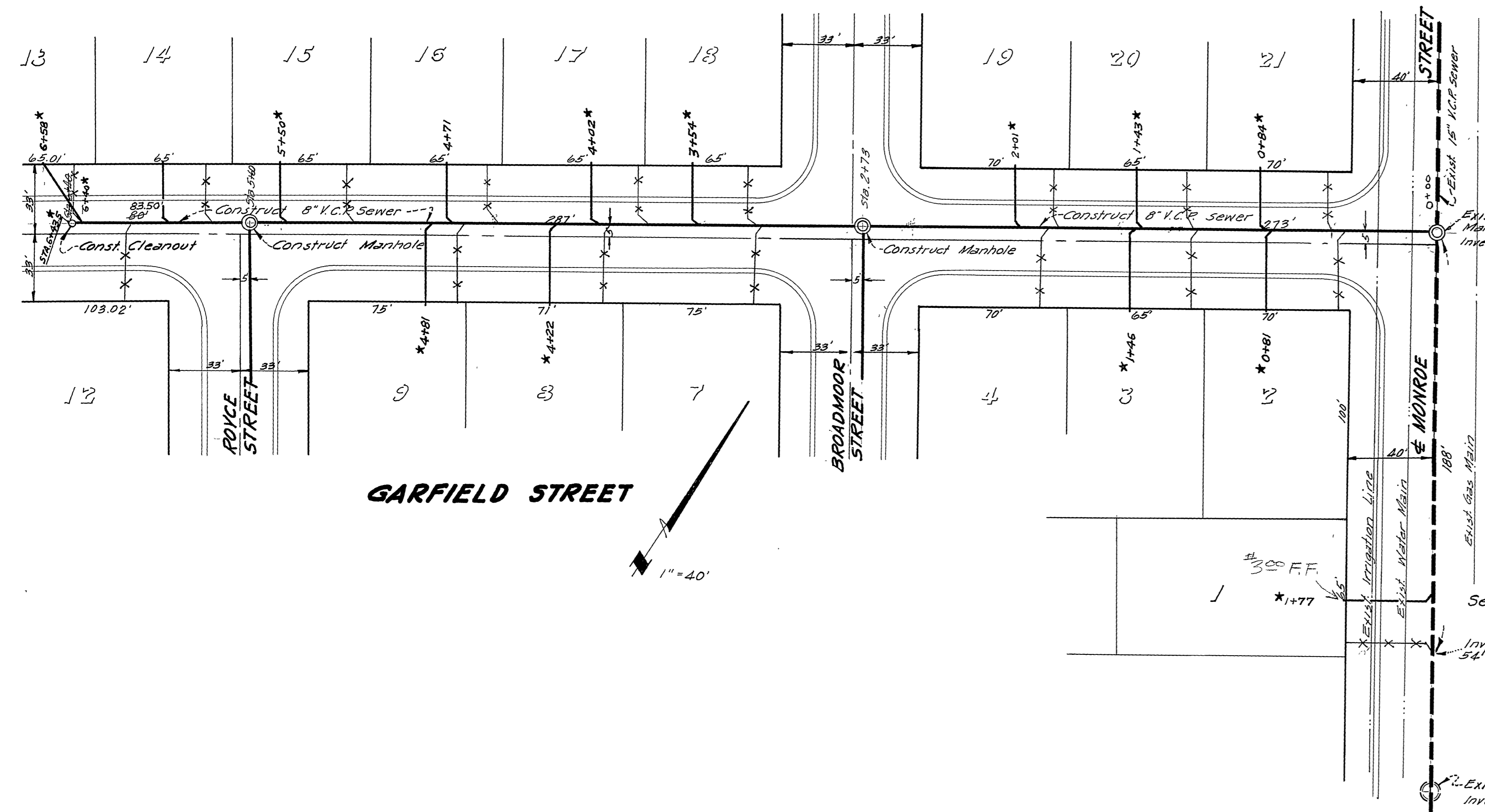
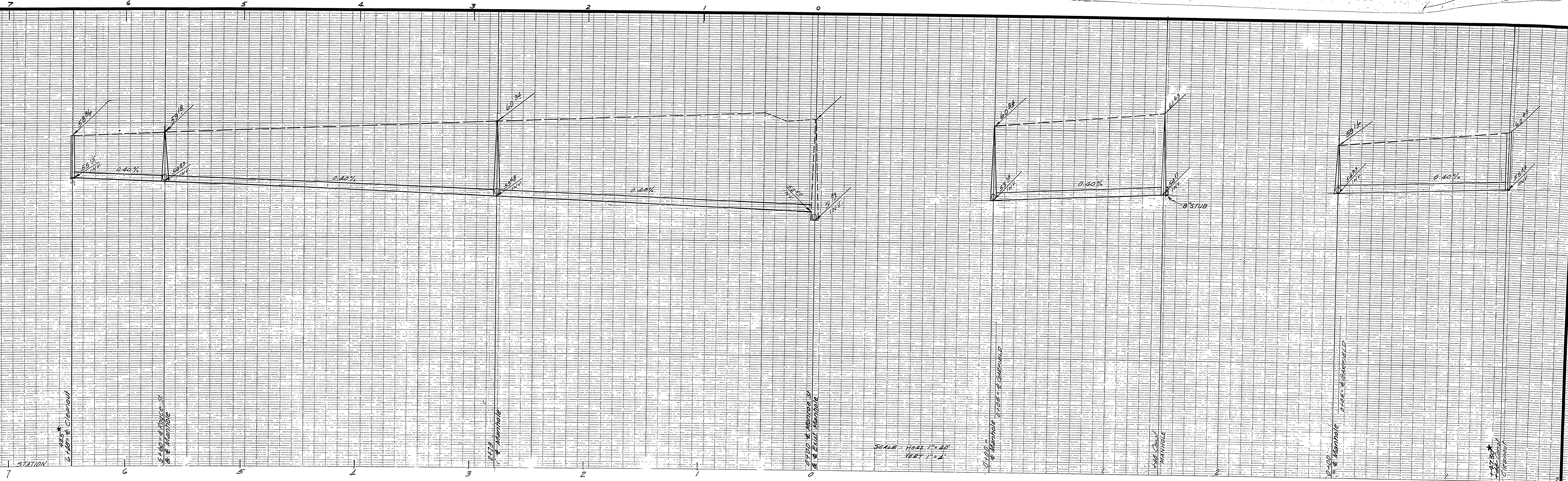


SHOULD BE KEPT ON PROPERTY INVOLVED CROSS  
 1/4" = 10' 1/2" X 50'  
 CIVIL ENGINEER



Note: All manholes to be constructed to conform to City Standard No. 500. Cleanouts to conform to City Std. 560.  
 Bench Mark top of fire hydrant S.W. Corner Lilton & Monroe Streets. Elev = 769.85'

**W.R. MAXWELL SURVEYING**  
 San Bernardino, Calif.  
 Approved by *W. E. Bryant* Date Dec. 1, 1938

**CITY OF RIVERSIDE, CALIFORNIA**  
 DEPARTMENT OF PUBLIC WORKS

**TIMDALE PARK UNIT I**  
 SEWER PLANS  
 GARFIELD ST., ROYCE ST.  
 BROADMOOR ST.  
 SCALE: HORIZ. 1" = 40', VERT. 1" = 4'

Approved by *W. R. Maxwell* NO. **S-154**