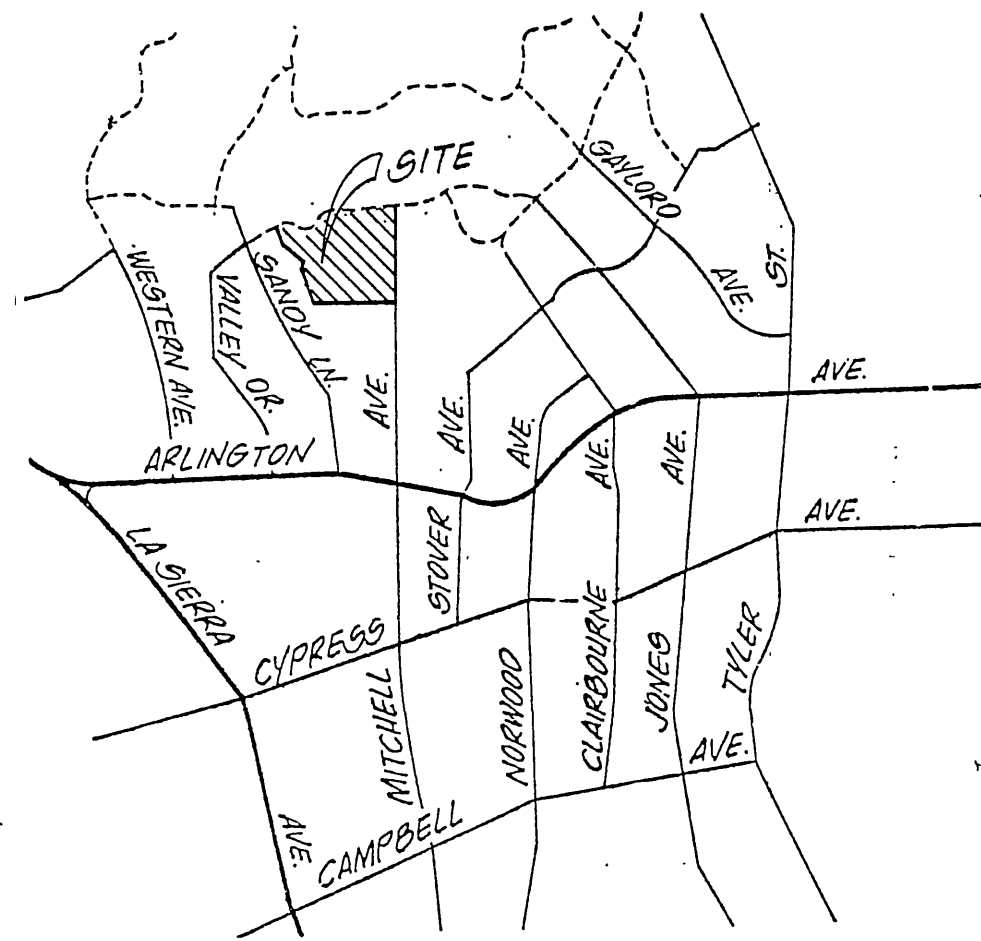
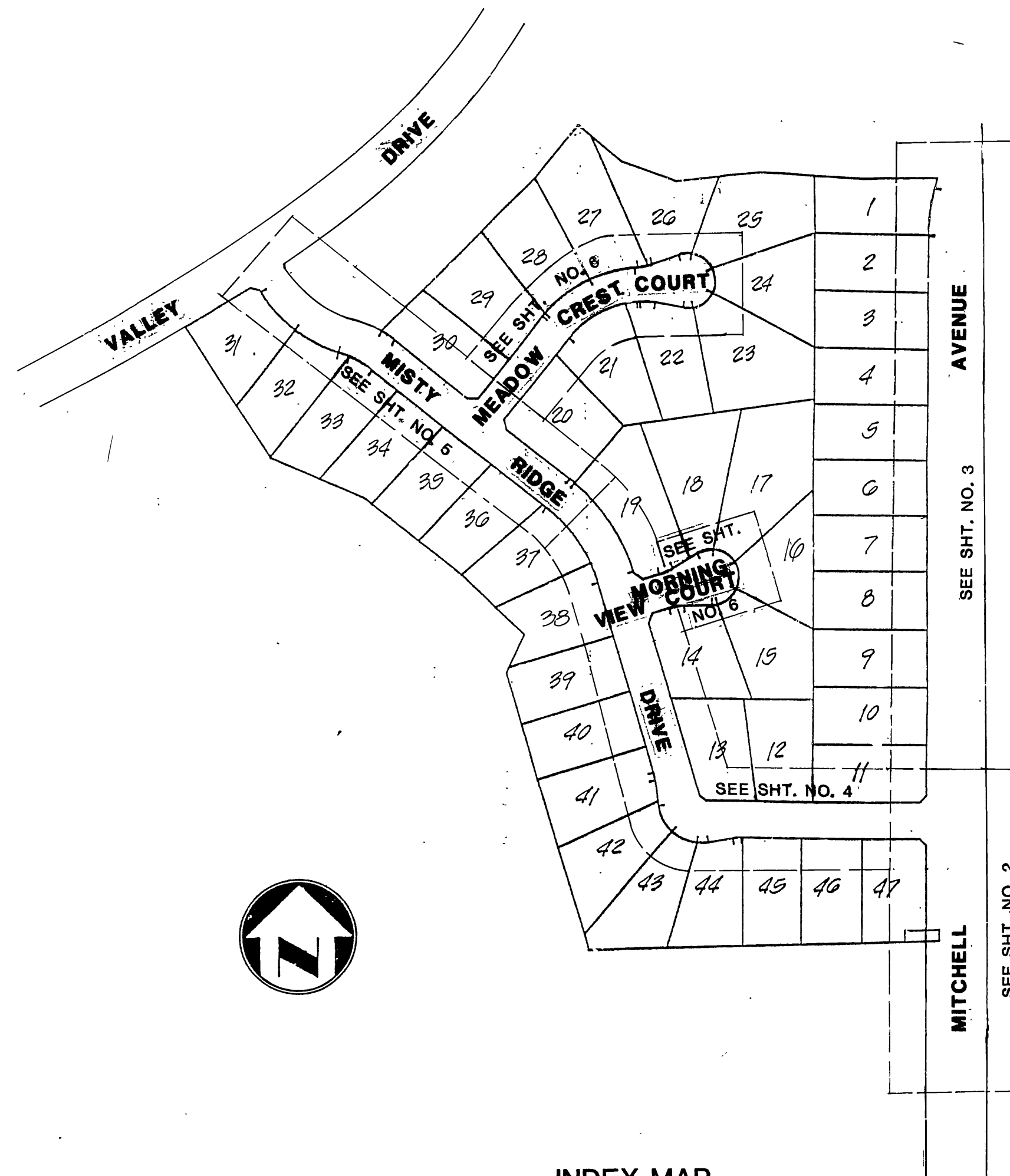


SEWER IMPROVEMENT PLANS

TRACT NO. 23154



VICINITY MAP
N.T.S.



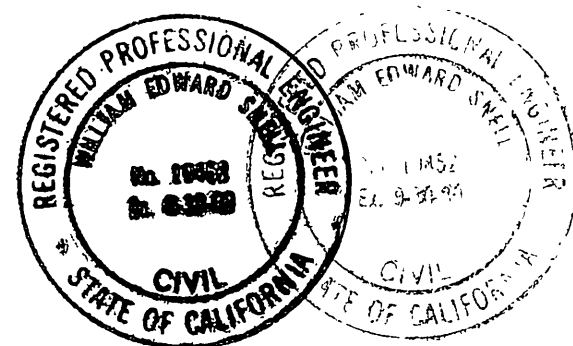
INDEX MAP

GENERAL NOTES

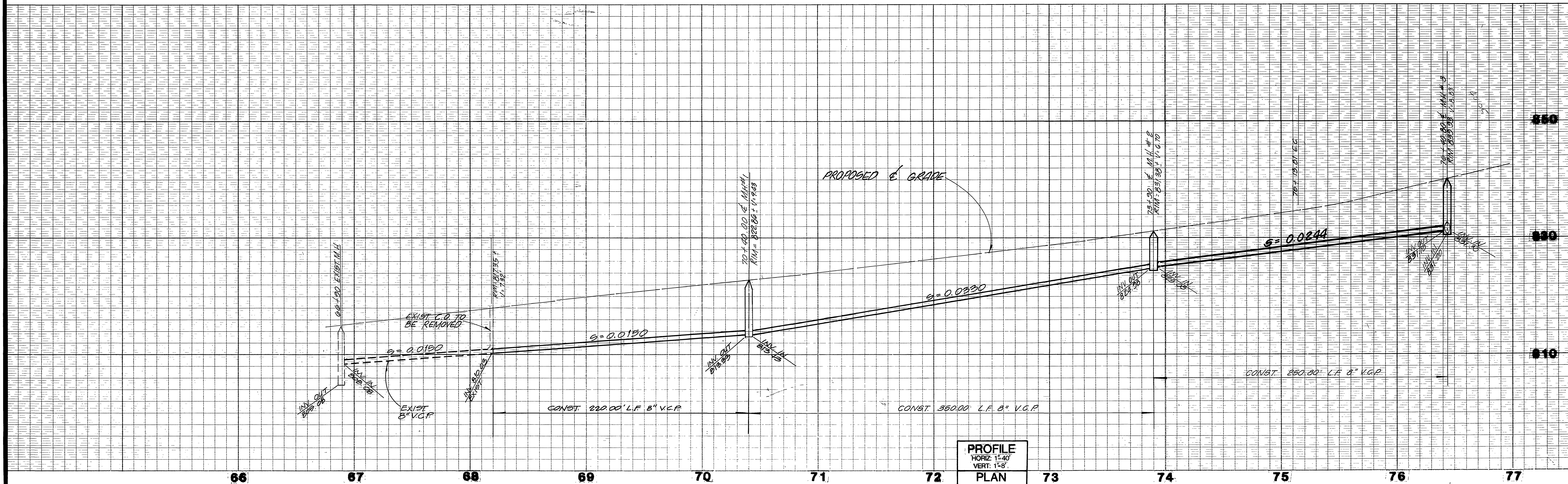
- Contractor is to verify existing sewer elevation prior to construction.
- Location of laterals to be determined in the field at the direction of the owner. Avoid conflict with proposed and/or existing facilities.
- No finished floor elevations shall be less than 4' above the sewer flow line at point of connection without having a proper backwater valve installed in the lateral.
- A plug shall be installed and will remain in place where the new sewer connects with the existing sewer until the new sewer is accepted by the City.
- The sewer contractor shall adjust manholes to final grade after paving is completed.
- It shall be the responsibility of the contractor to clear the right of way in accordance with the provisions of law as it affects each utility including irrigation lines as appurtenances and at no cost to the City.
- Construction shall be in accordance with the City of Riverside Department of Public Works, Standard Drawings, Standard Drawing No. 10 and the Standard Specifications for Public Works Construction, current edition.
- The private engineer signing these plans is responsible for assuring the accuracy and acceptability of the work hereon. In the event of discrepancies arising during construction, the private engineer shall be responsible for determining an acceptable solution and revise the plans for approval by the City. Quantities shown are for information only and the City of Riverside is not responsible for their accuracy.
- The developer shall be responsible for preserving or re-establishing and referencing survey monuments destroyed, disturbed or buried as a result of construction shown hereon.
- All flagged elevations shall be staked in the field by the private engineer.
- Quantities shown are for information only and the City of Riverside is not responsible for their accuracy.
- The contractor shall call in a location request to Underground Service Alert (USA), phone number 1-800-422-4133, two working days before digging. No construction permit will be issued by the Public Works Department involving excavation for underground facilities unless the applicant has been provide an enquiry identification number by USA.

CONSTRUCTION NOTES

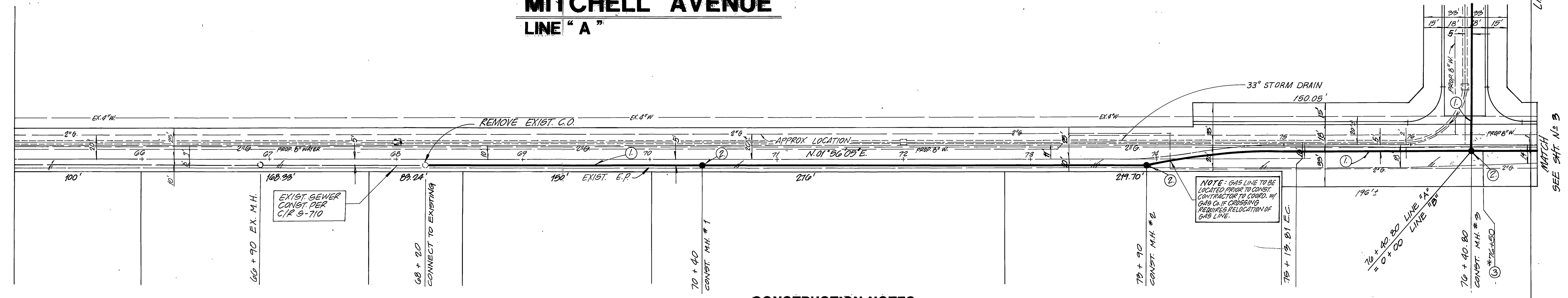
- CONST. 8" V.C.P. SEWER LINE..... 3,548 L.F.
- CONST. SEWER MANHOLE PER CITY STD. NO. 500... 16 EA.
- CONST. 4" SEWER LATERAL PER CITY STD. NO. 562... 1,720 L.F.
- CONST. 8" V.C.P. SEWER CLEAN-OUT PER CITY STD. NO. 560..... 2 EA.



CHOICE CABLE TV APPROVED BY: <i>[Signature]</i> DATE: 3-16-89 APPROVED BY: <i>[Signature]</i> DATE: 3-16-89		SOUTHERN CALIFORNIA GAS COMPANY APPROVED BY: <i>[Signature]</i> DATE: 3-16-89 APPROVED BY: <i>[Signature]</i> DATE: 3-16-89		ADKAN ENGINEERS CIVIL ENGINEERING, PLANNING, LAND SURVEYING 6830 AIRPORT DRIVE, RIVERSIDE, CA 92504, (714) 948-0241 WILLIAM E. SNELL, R.C.E. 10428 DESIGNED BY: <i>[Signature]</i> DATE: 3/16/89		CITY OF RIVERSIDE PUBLIC WORKS DEPARTMENT APPROVED BY: <i>[Signature]</i> DATE: 3-30-89 APPROVED BY: <i>[Signature]</i> DATE: 4-5-89		SEWER IMPROVEMENT PLANS TRACT NO. 23154 ACCOUNT NO. S-1540 SHEET 1 OF 6 J.N. 3319	
PACIFIC BELL APPROVED BY: <i>[Signature]</i> DATE: 3/16/89		CITY OF RIVERSIDE WATER DEPT. APPROVED BY: <i>[Signature]</i> DATE: 3-22-89		CITY OF RIVERSIDE ELECTRICAL DEPT. APPROVED BY: <i>[Signature]</i> DATE: 3/16/89		TRAFFIC DIVISION CHIEF P. W. ENGINEER: <i>[Signature]</i> DATE: 4-5-89		PUBLIC WORKS DIRECTOR: <i>[Signature]</i> DATE: 4/5/89	



MITCHELL AVENUE LINE "A"

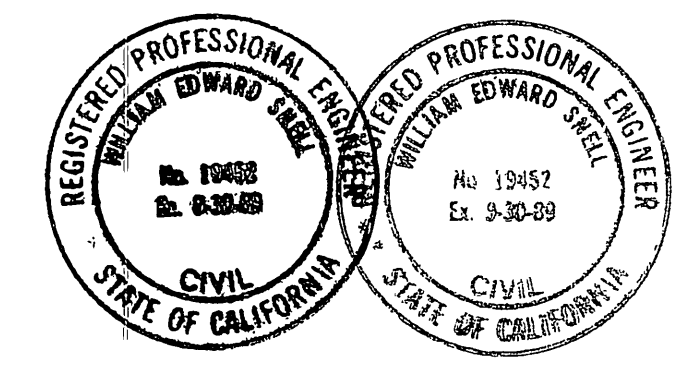


CONSTRUCTION NOTES

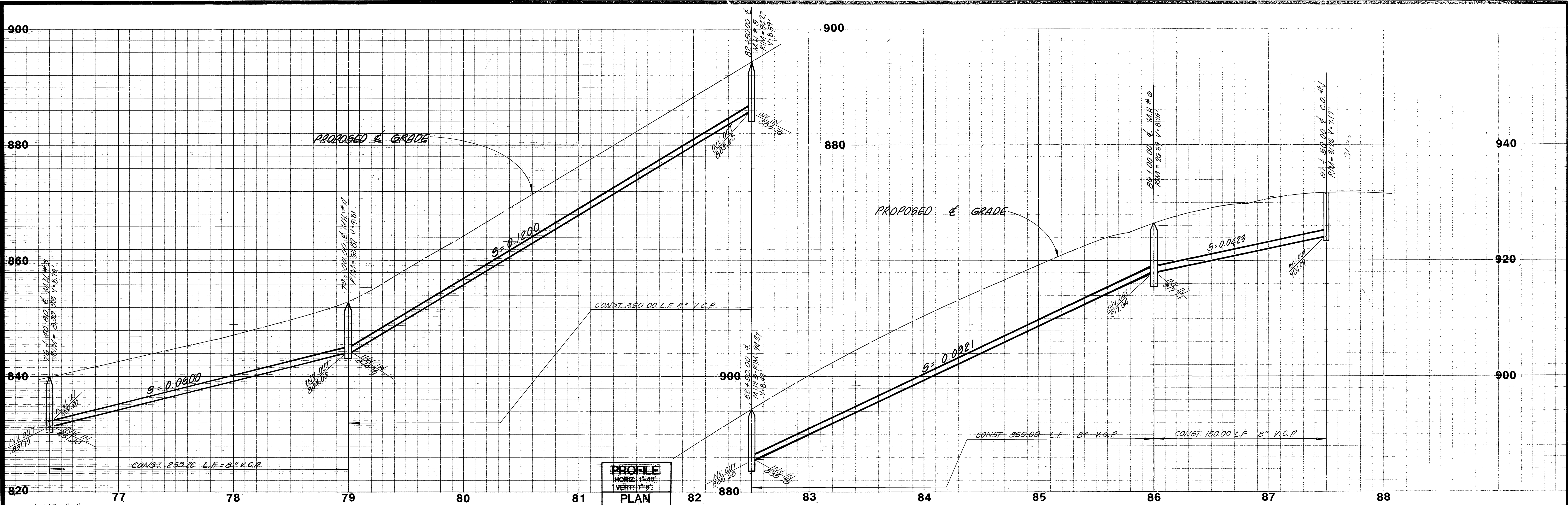
- ① CONST. 8" V.C.P. SEWER LINE
- ② CONST. SEWER MANHOLE PER CITY STD. NO. 500
- ③ CONST. 4" SEWER LATERAL PER CITY STD. NO. 562
- ④ CONST. 8" V.C.P. SEWER CLEAN-OUT PER CITY STD. NO. 560

CURVE DATA

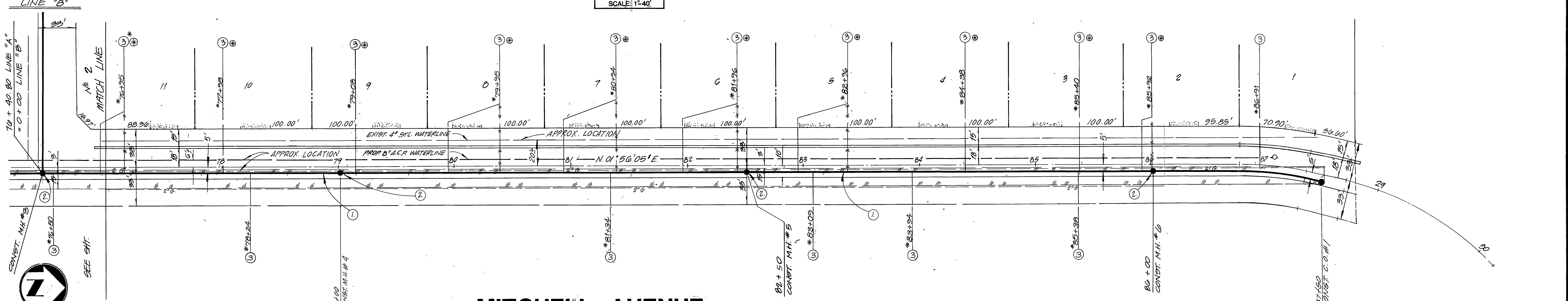
$R = 300'$
 $\Delta = 28^\circ 25' 43''$
 $T = 62.80'$
 $L = 123.81'$
 $C = 122.95'$



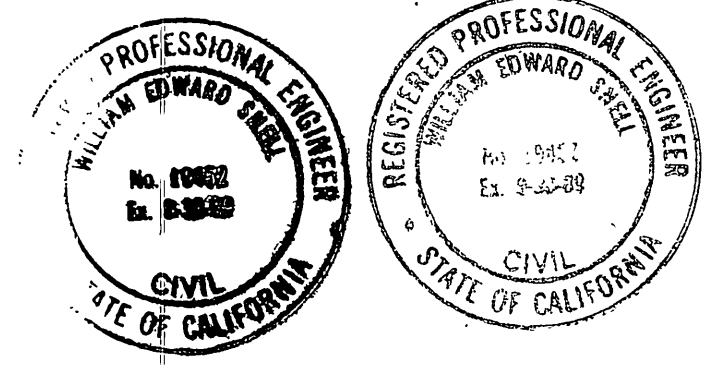
CHOICE CABLE TV <i>W. J. Bradley</i> 3-16-89 APPROVED BY DATE	SOUTHERN CALIFORNIA GAS COMPANY <i>R. R. Boughnia</i> 3-16-89 APPROVED BY DATE	ADKAN ENGINEERS CIVIL ENGINEERING, PLANNING, LAND SURVEYING 6830 AIRPORT DRIVE RIVERSIDE, CA 92514 (951) 888-0241 <i>William E. Snell</i> 3/16/89 WELJAN E. SNELL, R.C.E. 19452 DATE	CITY OF RIVERSIDE PUBLIC WORKS DEPARTMENT APPROVED BY <i>Barry Paul</i> PUBLIC WORKS DIRECTOR DATE 4/5/89	SEWER IMPROVEMENT PLANS MITCHELL AVENUE LINE "A" STA. 66+90 TO STA. 76+40.80 HORIZ. SCALE: 1" = 40' VERT. SCALE: 1" = 8' ACCOUNT NO. S-1540 SHEET 2 OF 3 J.N. 3319
PACIFIC BELL <i>L. P. Bradley</i> 3/16/89 APPROVED BY DATE	CITY OF RIVERSIDE WATER DEPT. <i>Richard J. Deibel</i> 3-22-89 APPROVED BY DATE	CITY OF RIVERSIDE ELECTRICAL DEPT. <i>John Johnson</i> 3/16/89 APPROVED BY DATE	MARK REVISIONS APPR. DATE DESIGNED BY <i>J.E.R.</i> DRAWN BY <i>G.D.</i> CHECKED BY <i>J.S.</i>	*AS BUILT 11/10/89 INDEXED 4-28-89 4H



PROFILE
 HORIZ. SCALE: 1"=40'
 VERT. SCALE: 1"=8'



MITCHELL AVENUE
LINE "A"

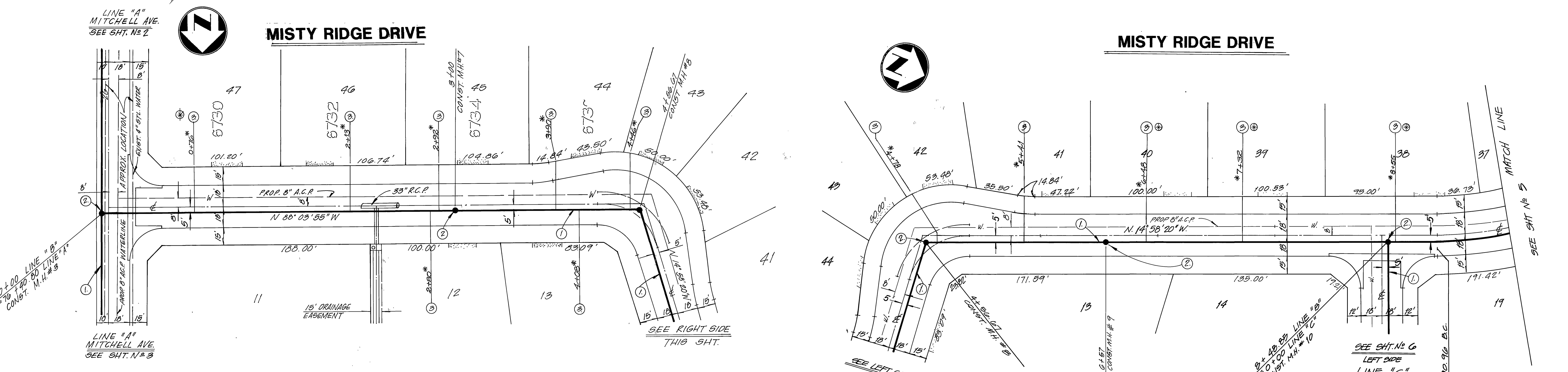
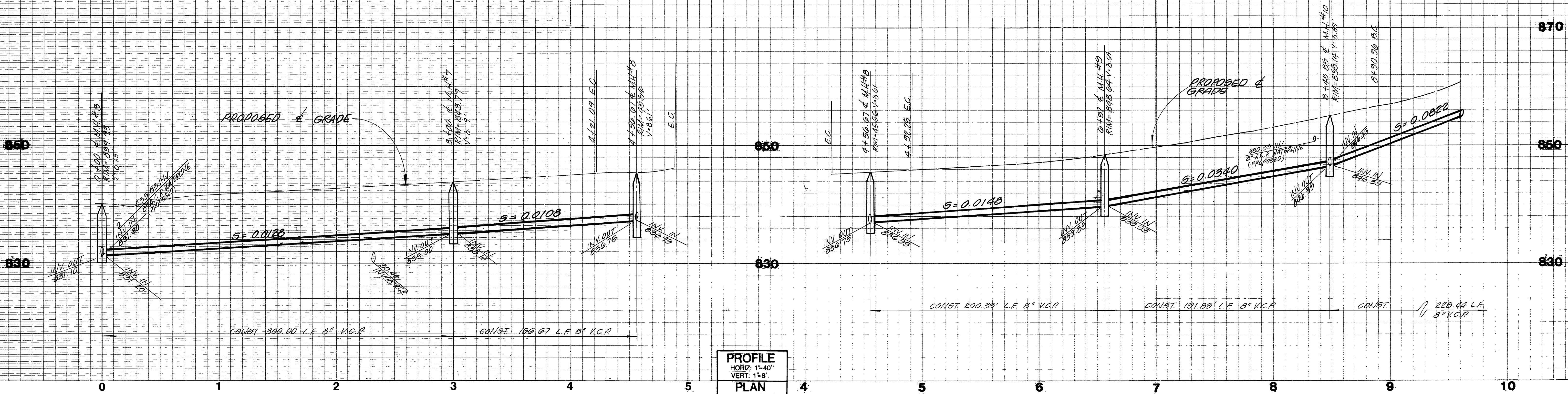


CONSTRUCTION NOTES

- ① — CONST. 8" V.C.P. SEWER LINE
- ② — CONST. SEWER MANHOLE PER CITY STD. NO. 500
- ③ — CONST. 4" SEWER LATERAL PER CITY STD. NO. 562
- ④ — CONST. 8" V.C.P. SEWER CLEAN-OUT PER CITY STD. NO. 560

⊕ — BACK WATER VALVE REQUIRED

PACIFIC BELL <i>J.R. Bradley</i> APPROVED BY: 3/16/89 DATE	CHOICE-CABLE TV <i>W. J. Duffin</i> APPROVED BY: 3-16-89 DATE	SOUTHERN CALIFORNIA GAS COMPANY <i>R.R. Baughman</i> APPROVED BY: 3-16-89 DATE	ADKAN ENGINEERS CIVIL ENGINEERING, PLANNING, LAND SURVEYING 6830 AIRPORT DRIVE, RIVERSIDE, CA 92504 (714) 888-0241 <i>William E. Snell</i> R.C.E. 19452 DATE 3/16/89	CITY OF RIVERSIDE PUBLIC WORKS DEPARTMENT APPROVED BY: <i>Bernard Beal</i> PUBLIC WORKS DIRECTOR DATE 4/5/89	SEWER IMPROVEMENT PLANS MITCHELL AVENUE LINE "A" STA. 76+40.00 TO STA. 87+50 HORIZ. SCALE: 1"=40' VERT. SCALE: 1"=8'	ACCOUNT NO. S-1540 SHEET 3 OF 6 J.N. 3319
	CITY OF RIVERSIDE WATER DEPT. <i>Richard J. Duda</i> APPROVED BY: 3-22-89 DATE	CITY OF RIVERSIDE ELECTRICAL DEPT. <i>John D. Brown</i> APPROVED BY: 3/16/89 DATE				

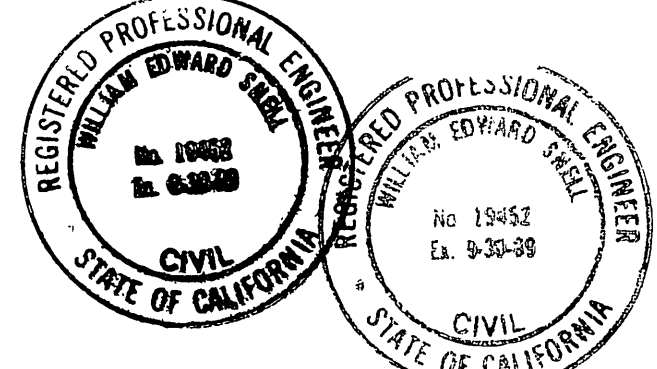


CONSTRUCTION NOTES

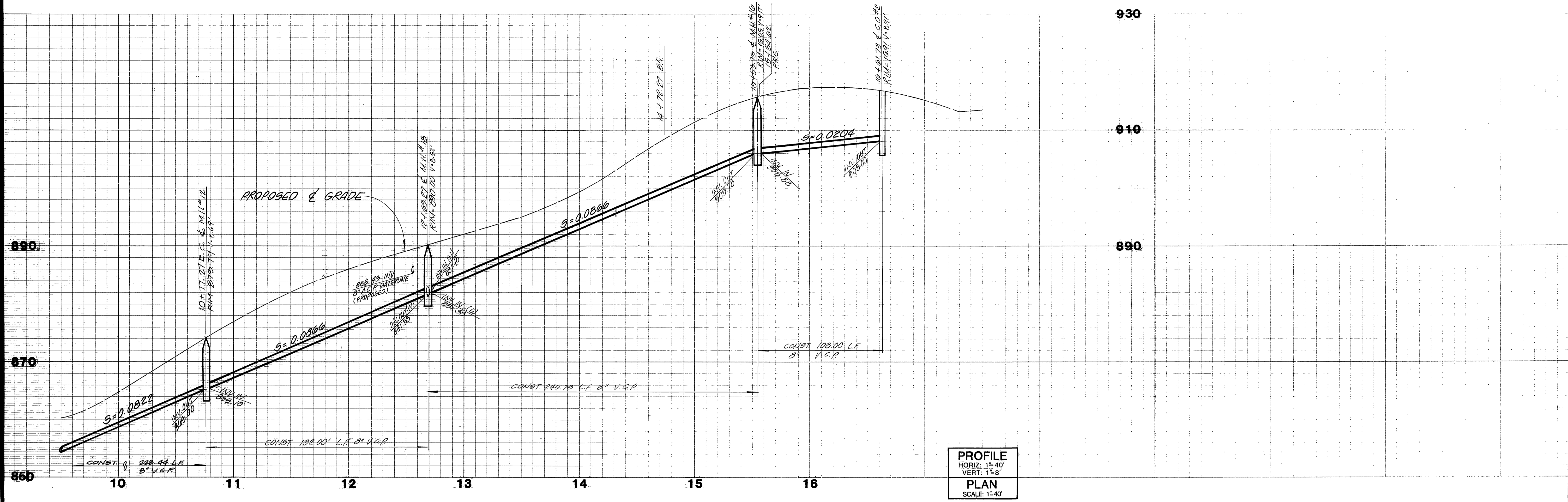
- ① - CONST. 8" V.C.P. SEWER LINE
- ② - CONST. SEWER MANHOLE PER CITY STD. NO. 500
- ③ - CONST. 4" SEWER LATERAL PER CITY STD. NO. 562
- ④ - CONST. 8" V.C.P. SEWER CLEAN-OUT PER CITY STD. NO. 560

⊕ BACK WATER VALVE REQUIRED

CURVE DATA
 R = 305'
 Δ = 35°
 T = 96.17'
 L = 186.21'
 C = 183.42'
 *AS BUILT 5/16/89

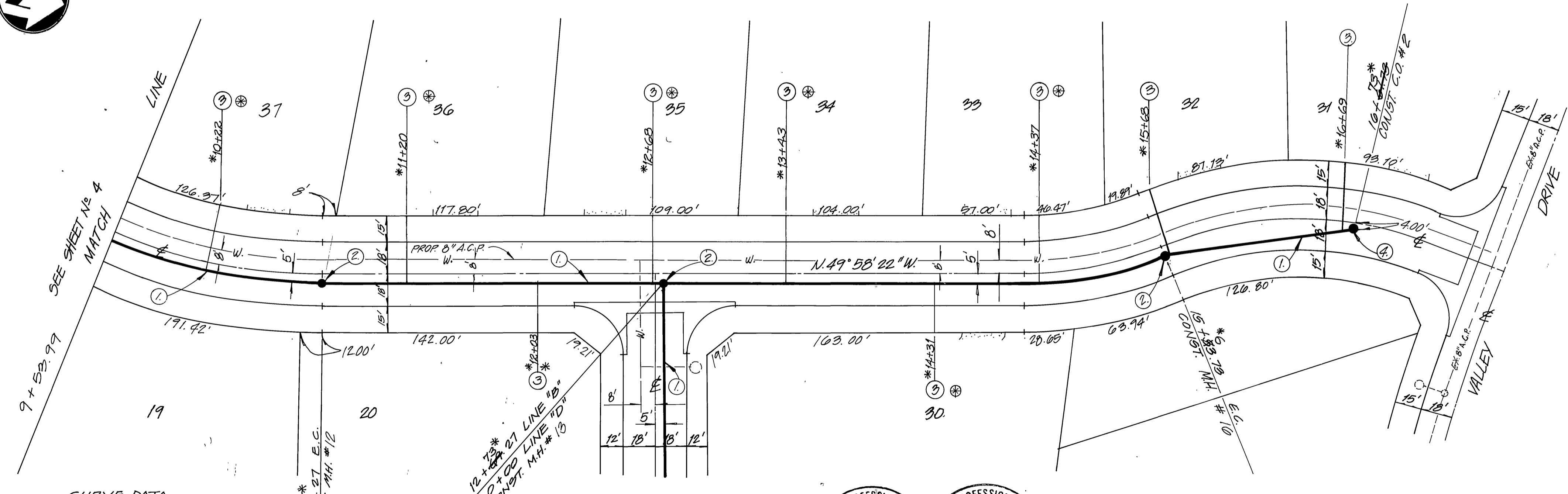


PACIFIC BELL APPROVED BY: <i>L.A. Bradley</i> 3/16/89 DATE: 3/16/89	CHOICE CABLE TV APPROVED BY: <i>Wendy Applegate</i> 3-16-89 DATE: 3-16-89	SOUTHERN CALIFORNIA GAS COMPANY APPROVED BY: <i>R. Rughona</i> 3-16-89 DATE: 3-16-89	ADKAN ENGINEERS CIVIL ENGINEERING, PLANNING, LAND SURVEYING 8800 AIRPORT DRIVE RIVERSIDE, CA 92504 (941) 588-0241 <i>William E. Snell</i> 3/16/89 WILLIAM E. SNELL R.C.E. 19452 DATE: 3/16/89	CITY OF RIVERSIDE PUBLIC WORKS DEPARTMENT APPROVED BY: <i>Darryl Bell</i> DATE: 4/5/89 PUBLIC WORKS DIRECTOR	SEWER IMPROVEMENT PLANS MISTY RIDGE DRIVE LINE "B" STA. 0+00 TO STA. 10+00 HORIZ. SCALE: 1"=40' VERT. SCALE: 1"=8' ACCOUNT NO. S-1540 SHEET 4 OF 6 J.N. 3319
	CITY OF RIVERSIDE WATER DEPT. APPROVED BY: <i>Richard J. Orshel</i> 3-22-89 DATE: 3-22-89	CITY OF RIVERSIDE ELECTRICAL DEPT. APPROVED BY: <i>John Johnson</i> 3/16/89 DATE: 3/16/89			



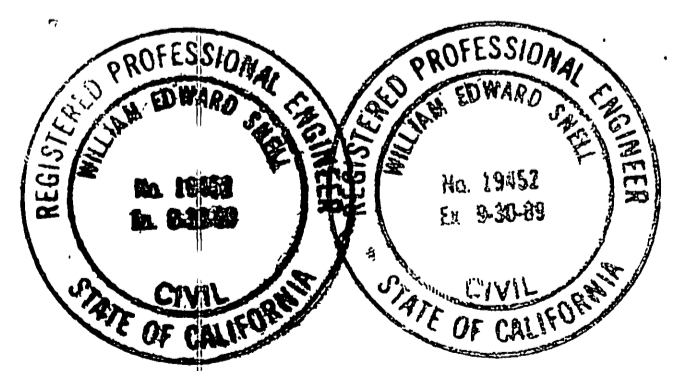
PROFILE
 HORIZ: 1"=40'
 VERT: 1"=8'
 PLAN
 SCALE: 1"=40'

MISTY RIDGE DRIVE



CURVE DATA
 R = 205'
 Δ = 25°
 T = 96.11'
 L = 100.31'
 C = 109.43'

CURVE DATA
 R = 208.00
 Δ = 22° 46' 05"
 T = 41.20'
 L = 81.40'
 C = 80.93'

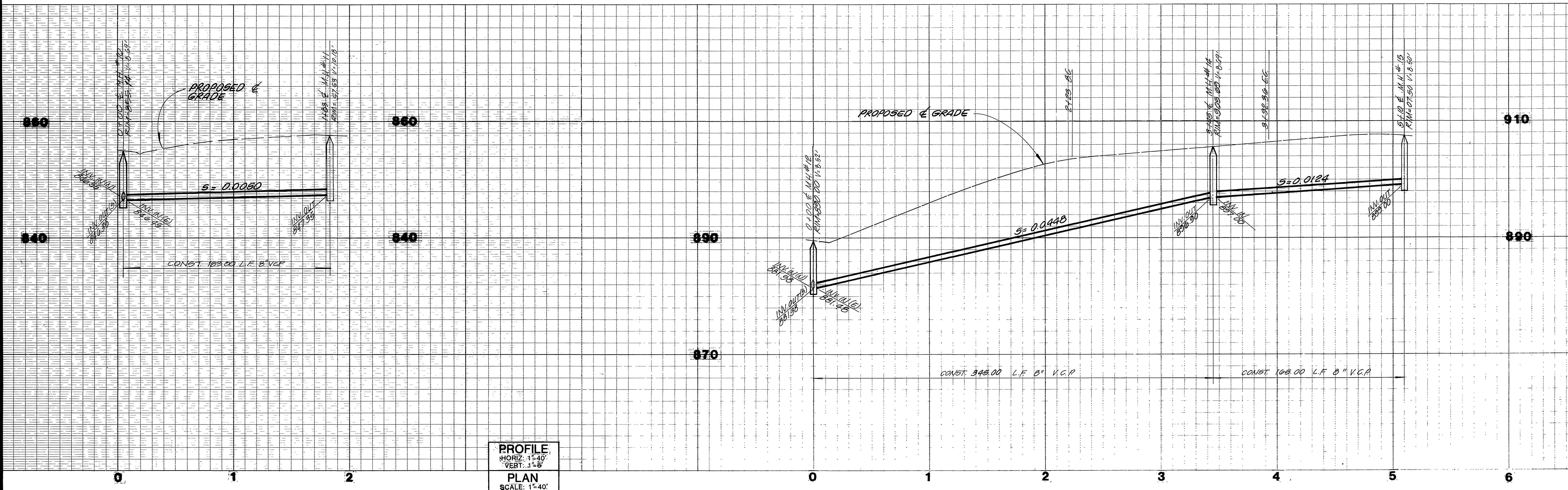


CONSTRUCTION NOTES

- ① CONST. 8" V.C.P. SEWER LINE
- ② CONST. SEWER MANHOLE PER CITY STD. NO. 500
- ③ CONST. 4" SEWER LATERAL PER CITY STD. NO. 562
- ④ CONST. 8" V.C.P. SEWER CLEAN-OUT PER CITY STD. NO. 560

⊕ BACK WATER VALVE REQUIRED

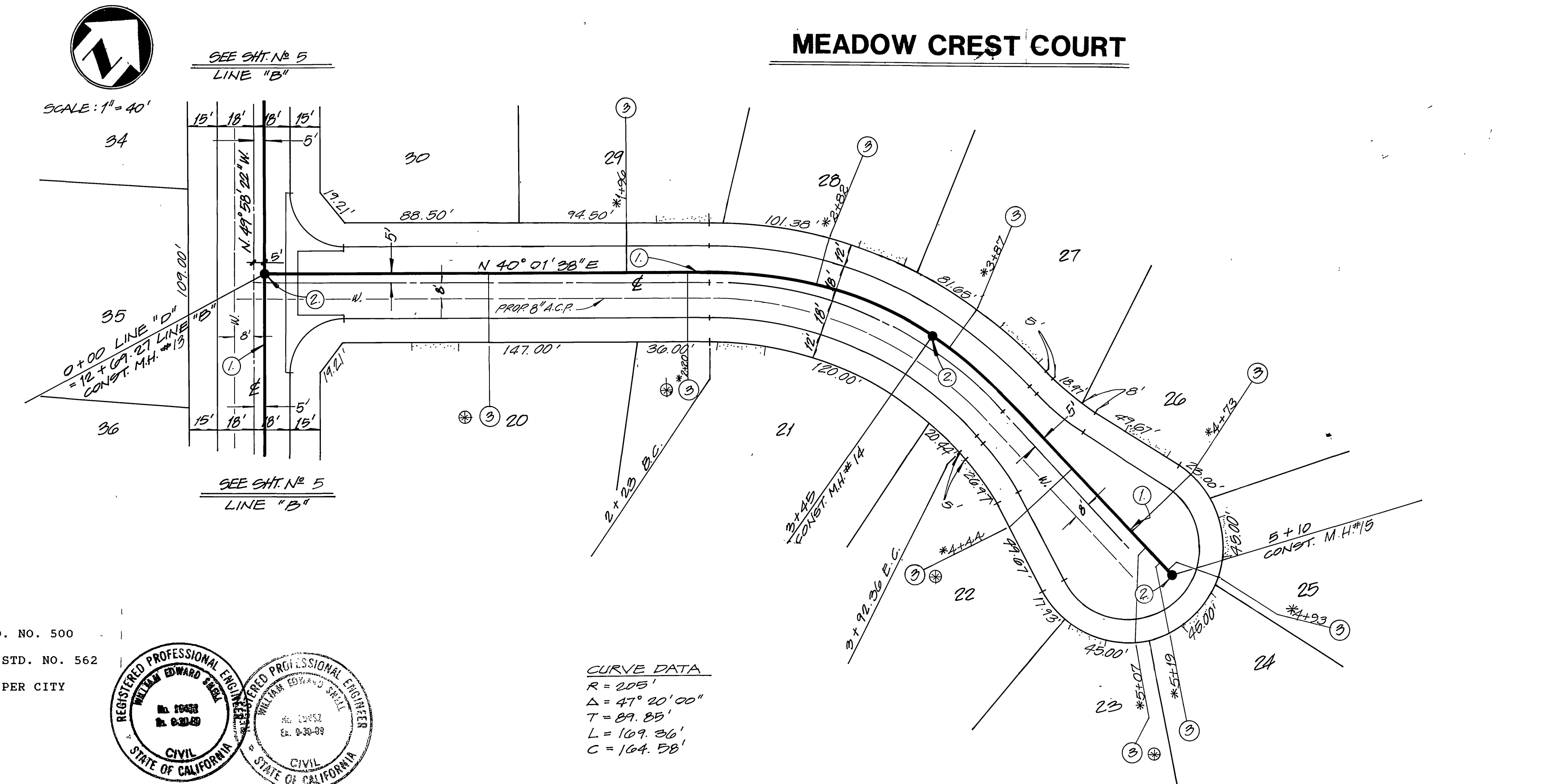
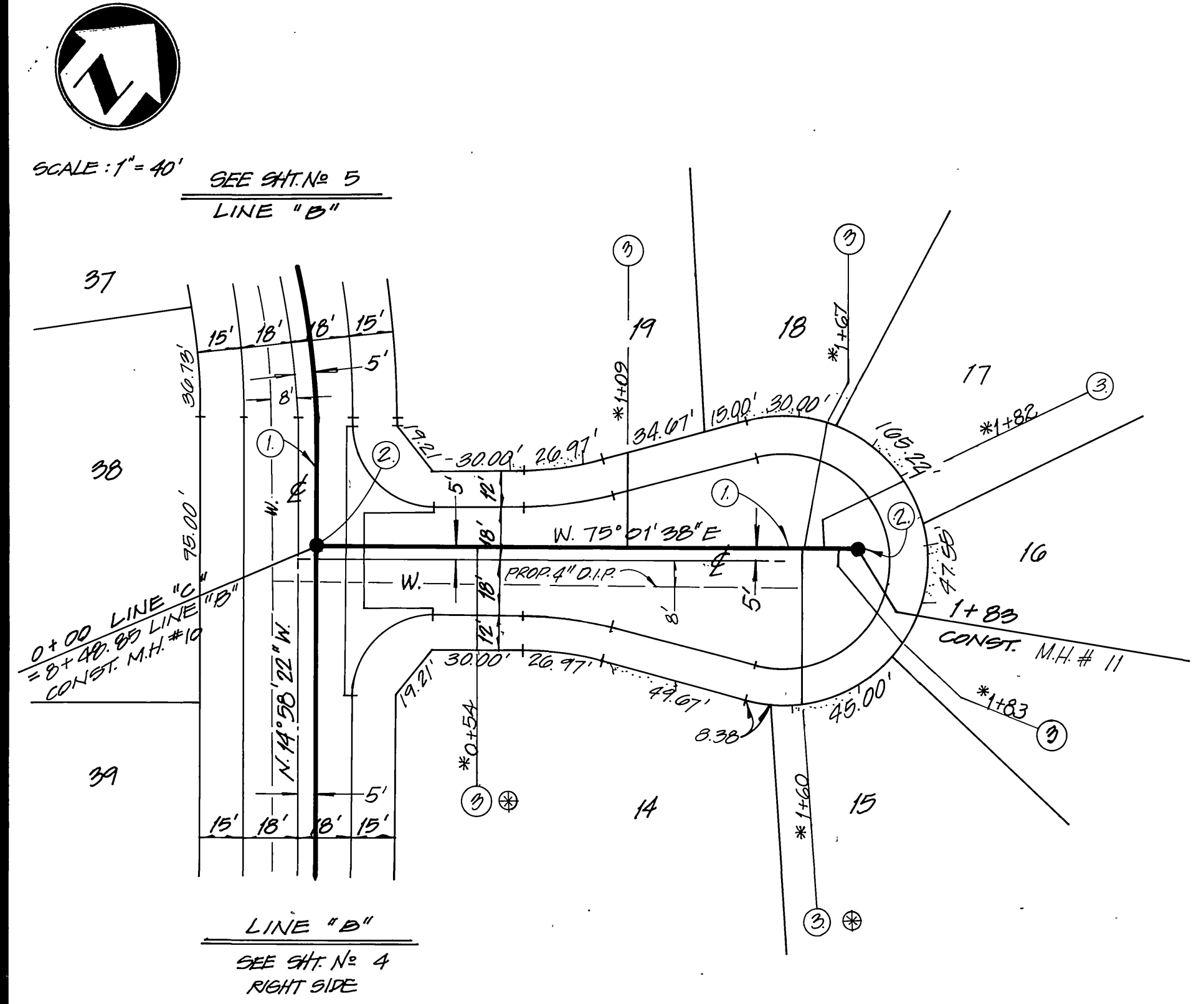
PACIFIC BELL <i>L.A. Bradley</i> APPROVED BY DATE 3/16/89	CHOICE CABLE TV <i>W. J. Ruffolo</i> APPROVED BY DATE 3-16-89	SOUTHERN CALIFORNIA GAS COMPANY <i>R. J. Ruffolo</i> APPROVED BY DATE 3-16-89	ADKAN ENGINEERS CIVIL ENGINEERING, PLANNING, LAND SURVEYING 8850 AIRPORT DRIVE, RIVERSIDE, CA 92504 (714) 988-0241 <i>William E. Shell</i> DATE 3/16/89	CITY OF RIVERSIDE PUBLIC WORKS DEPARTMENT APPROVED BY DATE BY <i>Barry Red</i> PUBLIC WORKS DIRECTOR DATE 4/15/89	SEWER IMPROVEMENT PLANS MISTY RIDGE DRIVE LINE "B" STA. 10+00 TO STA. 15+00 HORIZ. SCALE: 1"=40' VERT. SCALE: 1"=8'	ACCOUNT NO. S-1540 SHEET 5 OF 6 J.N. 3319
	CITY OF RIVERSIDE WATER DEPT. <i>Richard J. Durbak</i> APPROVED BY DATE 3-22-89	CITY OF RIVERSIDE ELECTRICAL DEPT. <i>John Johnson</i> APPROVED BY DATE 3/16/89				



PROFILE
 HORIZ. 1"=40'
 VERT. 1"=8'
PLAN
 SCALE: 1"=40'

MORNING VIEW COURT

MEADOW CREST COURT

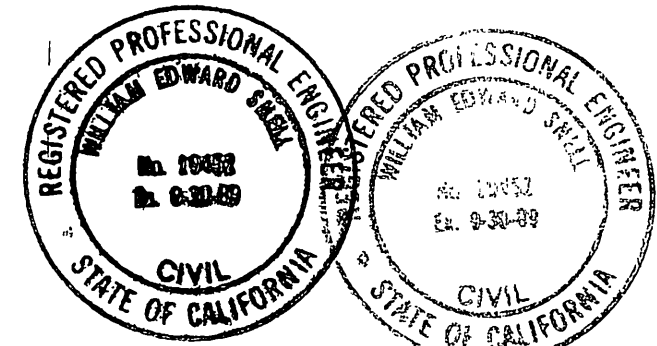


CONSTRUCTION NOTES

- ① - CONST. 8" V.C.P. SEWER LINE
- ② - CONST. SEWER MANHOLE PER CITY STD. NO. 500
- ③ - CONST. 4" SEWER LATERAL PER CITY STD. NO. 562
- ④ - CONST. 8" V.C.P. SEWER CLEAN-OUT PER CITY STD. NO. 560

⊗ BACK WATER VALVE REQUIRED

CURVE DATA
 R = 205'
 Δ = 47° 20' 00"
 T = 89.85'
 L = 109.36'
 C = 164.58'



PACIFIC BELL APPROVED BY: <i>L.A. Bradley</i> DATE: 3/16/89	CHOICE CABLE TV APPROVED BY: <i>W. J. ...</i> DATE: 3-16-89	SOUTHERN CALIFORNIA GAS COMPANY APPROVED BY: <i>R. R. ...</i> DATE: 3-16-89	ADKAN ENGINEERS CIVIL ENGINEERING, PLANNING, LAND SURVEYING 6830 AIRPORT DRIVE, RIVERSIDE, CA 92504 (714) 988-0241 APPROVED BY: <i>William E. Snell</i> DATE: 3/16/89	CITY OF RIVERSIDE PUBLIC WORKS DEPARTMENT APPROVED BY: <i>Barry Ped</i> DATE: 4/5/89	SEWER IMPROVEMENT PLANS MORNING VIEW COURT - LINE 'C' STA. 0+00 TO STA. 1+83 MEADOW CREST COURT - LINE 'D' STA. 0+00 TO STA. 5+10 HORIZ. SCALE: 1"=40' VERT. SCALE: 1"=8' ACCOUNT NO. S-1540 SHEET 6 of 6 J.N. 3319
	CITY OF RIVERSIDE WATER DEPT. APPROVED BY: <i>Richard J. ...</i> DATE: 3-22-89	CITY OF RIVERSIDE ELECTRICAL DEPT. APPROVED BY: <i>John Johnson</i> DATE: 3/16/89	REGISTERED PROFESSIONAL ENGINEER WILLIAM E. SNELL CIVIL STATE OF CALIFORNIA No. 13053 Ex. 9-30-89	REGISTERED PROFESSIONAL ENGINEER BARRY PED CIVIL STATE OF CALIFORNIA No. 13053 Ex. 9-30-89	DESIGNED BY: J.E.R. DRAWN BY: G.P. CHECKED BY: J.S. MARK REVISIONS APPR. DATE