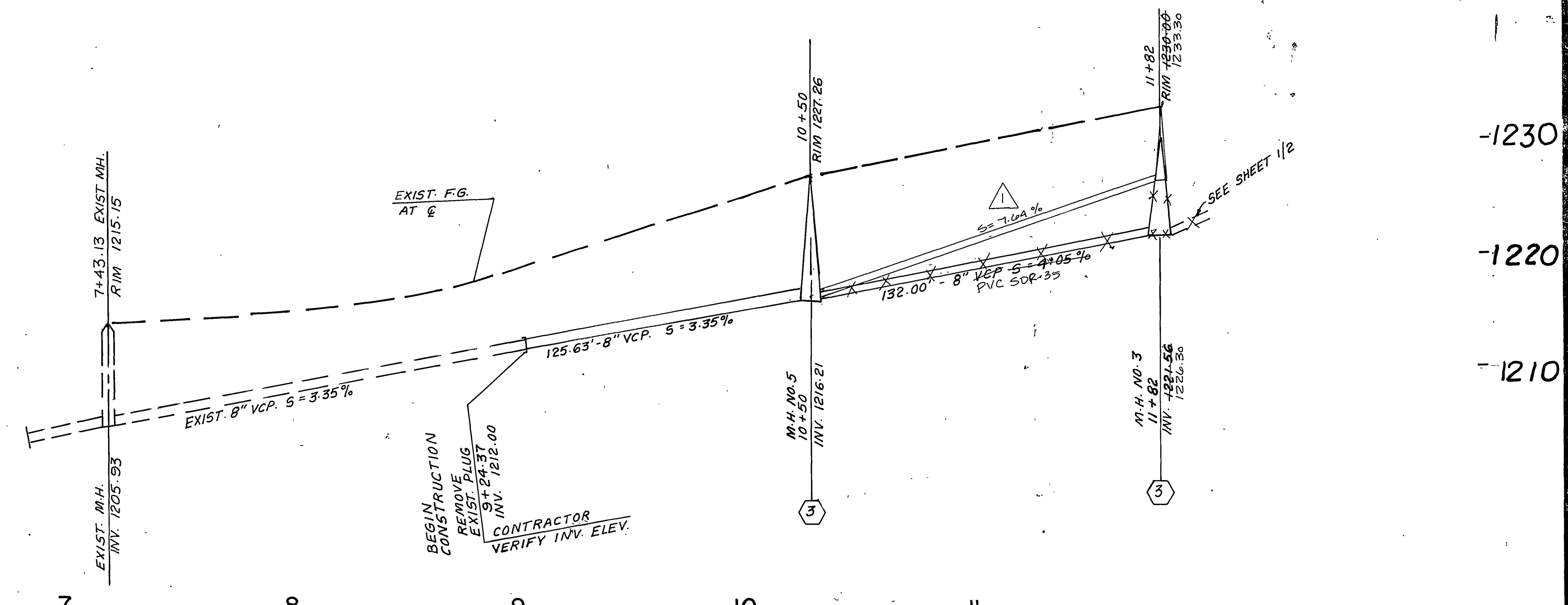


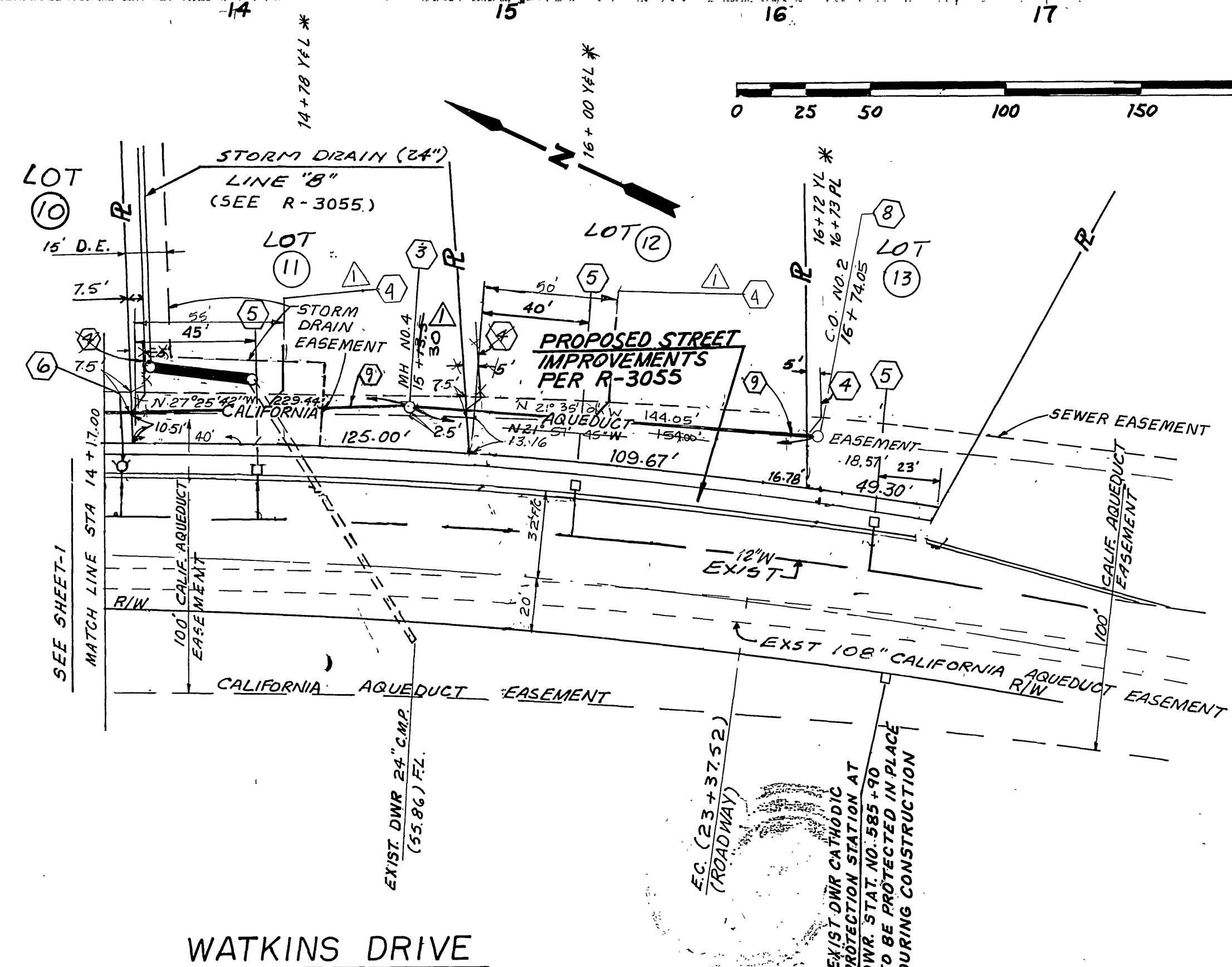
PROFILE PLAN
SCALE HORIZ. 1" = 40'
VERT. 1" = 8'

A SEVEN (7) DAY ADVANCE NOTIFICATION IS REQUIRED PRIOR TO STARTING WORK WITHIN THE DEPARTMENT OF WATER RESOURCES EASEMENT. CONTACT THE DIVISION OF LAND AND RIGHT OF WAY ENCROACHMENT PERMIT SECTION SACRAMENTO CALIFORNIA AT (916)-448-7360.

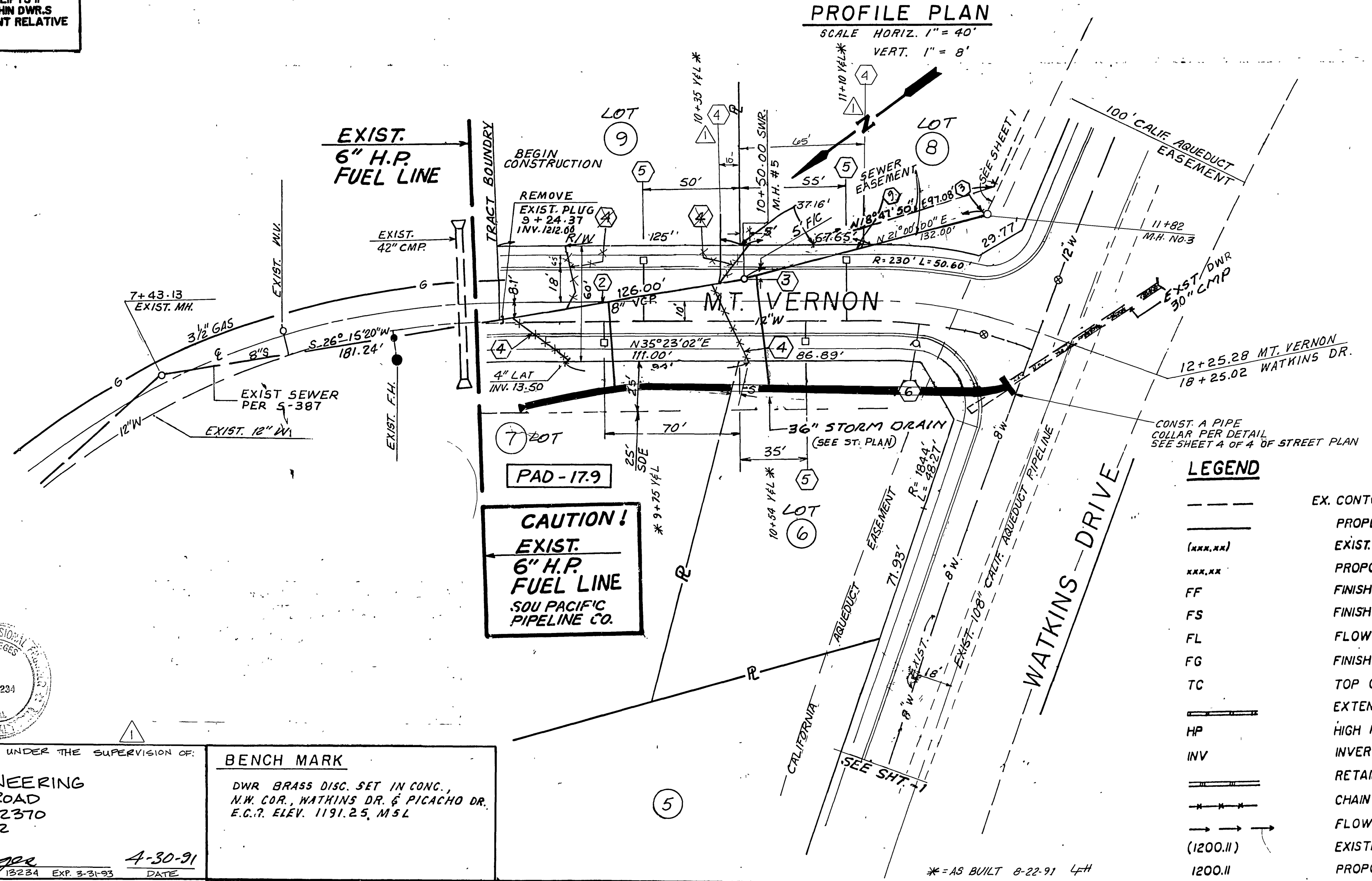
ALL TRENCHES SHALL BE EXCAVATED TO COMPLY WITH FEDERAL OCCUPATIONAL SAFETY HEALTH ADMINISTRATION STANDARDS NO. 2207 TRENCH BACKFILL SHALL BE PLACED IN NO GREATER THAN 4-INCH LIFTS IF HAND COMPACTED OR NO GREATER THAN 8-INCH LIFTS IF POWER COMPACTED. BACKFILL COMPACTED WITHIN DWR'S EASEMENT SHALL BE COMPACTED TO 90 PERCENT RELATIVE COMPACTION (ASTM D698).



MT. VERNON AVE.
SEWER LINE EXT.



WATKINS DRIVE



LEGEND

---	EX. CONTOUR LINES
---	PROPERTY LINES
(XXX.XX)	EXIST. ELEVATION
XXX.XX	PROPOSED ELEV.
FF	FINISH FLOOR
FS	FINISH SURFACE
FL	FLOW LINE
FG	FINISH GRADE
TC	TOP OF CURB
---	EXTENDED FOOTING
HP	HIGH POINT
INV	INVERT ELEV.
---	RETAINING WALL
---	CHAIN LINK FENCE
---	FLOW LINE
(1200.II)	EXISTING ELEV.
1200.II	PROPOSED ELEV.



CITY OF RIVERSIDE WATER SYSTEM

SIGNED BY *Richard J. Duda*

DATE 3-8-90

REVISIONS PREPARED UNDER THE SUPERVISION OF:

PERRIS ENGINEERING
1051 DAVIDS ROAD
PERRIS, CA. 92370
(714) 657-2822

Paul Dieges 4-30-91
PAUL DIEGES R.C.E. 12234 EXP. 3-31-93

BENCH MARK

DWR BRASS DISC. SET IN CONC.,
N.W. COR. WATKINS DR. & PICACHO DR.
E.C.P. ELEV. 1191.25, M.S.L.

LEGAL DESCRIPTION

A PORTION OF SEC. 20 & 29 T2S., R. 4W. S.B. & M. BOUNDED BY WATKINS DR. & INTERSECTED BY MT. VERNON AVE. AS SHOWN BY MAP BOOK 64, PG. 189 PER RECORDS OF RIVERSIDE COUNTY, CONTAINING 10.54± ACRES.

ACREAGE LAND SYSTEMS Inc.

102 E. GRAND BLVD.
CORONA, CA 91719
(714) 734-0152

REVISOR	DATE	BY
1	11/9/90	Paul Dieges
2	11/21/90	Paul Dieges
3	11/21/90	Paul Dieges
4	11/21/90	Paul Dieges
5	11/21/90	Paul Dieges
6	11/21/90	Paul Dieges
7	11/21/90	Paul Dieges
8	11/21/90	Paul Dieges
9	11/21/90	Paul Dieges
10	11/21/90	Paul Dieges
11	11/21/90	Paul Dieges
12	11/21/90	Paul Dieges
13	11/21/90	Paul Dieges
14	11/21/90	Paul Dieges
15	11/21/90	Paul Dieges
16	11/21/90	Paul Dieges
17	11/21/90	Paul Dieges
18	11/21/90	Paul Dieges
19	11/21/90	Paul Dieges
20	11/21/90	Paul Dieges
21	11/21/90	Paul Dieges
22	11/21/90	Paul Dieges
23	11/21/90	Paul Dieges
24	11/21/90	Paul Dieges
25	11/21/90	Paul Dieges
26	11/21/90	Paul Dieges
27	11/21/90	Paul Dieges
28	11/21/90	Paul Dieges
29	11/21/90	Paul Dieges
30	11/21/90	Paul Dieges
31	11/21/90	Paul Dieges
32	11/21/90	Paul Dieges
33	11/21/90	Paul Dieges
34	11/21/90	Paul Dieges
35	11/21/90	Paul Dieges
36	11/21/90	Paul Dieges
37	11/21/90	Paul Dieges
38	11/21/90	Paul Dieges
39	11/21/90	Paul Dieges
40	11/21/90	Paul Dieges
41	11/21/90	Paul Dieges
42	11/21/90	Paul Dieges
43	11/21/90	Paul Dieges
44	11/21/90	Paul Dieges
45	11/21/90	Paul Dieges
46	11/21/90	Paul Dieges
47	11/21/90	Paul Dieges
48	11/21/90	Paul Dieges
49	11/21/90	Paul Dieges
50	11/21/90	Paul Dieges
51	11/21/90	Paul Dieges
52	11/21/90	Paul Dieges
53	11/21/90	Paul Dieges
54	11/21/90	Paul Dieges
55	11/21/90	Paul Dieges
56	11/21/90	Paul Dieges
57	11/21/90	Paul Dieges
58	11/21/90	Paul Dieges
59	11/21/90	Paul Dieges
60	11/21/90	Paul Dieges
61	11/21/90	Paul Dieges
62	11/21/90	Paul Dieges
63	11/21/90	Paul Dieges
64	11/21/90	Paul Dieges
65	11/21/90	Paul Dieges
66	11/21/90	Paul Dieges
67	11/21/90	Paul Dieges
68	11/21/90	Paul Dieges
69	11/21/90	Paul Dieges
70	11/21/90	Paul Dieges
71	11/21/90	Paul Dieges
72	11/21/90	Paul Dieges
73	11/21/90	Paul Dieges
74	11/21/90	Paul Dieges
75	11/21/90	Paul Dieges
76	11/21/90	Paul Dieges
77	11/21/90	Paul Dieges
78	11/21/90	Paul Dieges
79	11/21/90	Paul Dieges
80	11/21/90	Paul Dieges
81	11/21/90	Paul Dieges
82	11/21/90	Paul Dieges
83	11/21/90	Paul Dieges
84	11/21/90	Paul Dieges
85	11/21/90	Paul Dieges
86	11/21/90	Paul Dieges
87	11/21/90	Paul Dieges
88	11/21/90	Paul Dieges
89	11/21/90	Paul Dieges
90	11/21/90	Paul Dieges
91	11/21/90	Paul Dieges
92	11/21/90	Paul Dieges
93	11/21/90	Paul Dieges
94	11/21/90	Paul Dieges
95	11/21/90	Paul Dieges
96	11/21/90	Paul Dieges
97	11/21/90	Paul Dieges
98	11/21/90	Paul Dieges
99	11/21/90	Paul Dieges
100	11/21/90	Paul Dieges

CITY OF RIVERSIDE PUBLIC WORKS DEPARTMENT

APPROVED BY *Barry Ford* DATE 11/26/90

CHIEF P.W. ENGINEER

SEWER PLAN 27171

TRACT NO. 23064

WATKINS DR. & MT. VERNON AVE.

HORIZ. SCALE: 1" = 40' VERT. SCALE: 1" = 8'

ACCOUNT NO. S-1543

SHEET 2 OF 2