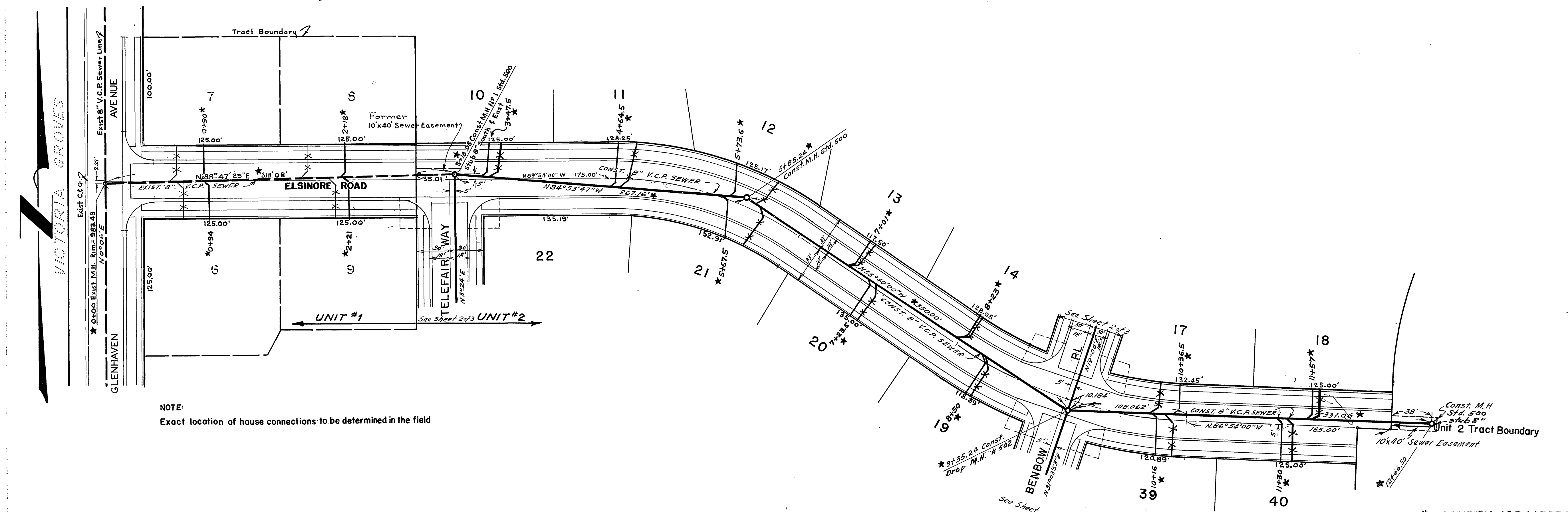


B.M. Spike in PP 1945-J Kansas 8
 Arroyo
 ELEV. = 978.25



NOTE:
 Exact location of house connections to be determined in the field

ENGINEERS ESTIMATE OF QUANTITIES	
8" V.C.P. SEWER	2,524.7'
NUMBER STD. MANHOLES	7
NUMBER STD. CLEANOUTS	1
NUMBER STD. DROP MANHOLES	1

Revisions and additions approved
 George O. Crawley, R.E. 9455 DATE 6-10-59
 Director of Public Works DATE 7-30-59

* = "As Built", Unit 1, 5-12-59 - H.Ball

NOTE:
 THIS PLAN HAS BEEN REVISED BY ADDING ELSINORE ROAD FROM STA. 2+83.00 TO STA. 12+23.66 (UNIT TWO) AND BY CHANGING THE GRADE BETWEEN STA. 1+50.00 & STA. 2+183.00 ON 6-10-59 - PLAN RENUMBERED FROM 1 OF 2 TO 1 OF 4

RIVERSIDE ENGINEERING CO. INC.
 RIVERSIDE, CALIFORNIA
 APPROVED *George O. Crawley* R.E. 9455 DATE 12-5-58
CITY OF RIVERSIDE, CALIFORNIA
 DEPARTMENT OF PUBLIC WORKS
 VICTORIA HILLS UNIT 1 & 2
 ELSINORE ROAD
 SEWER PLAN & PROFILE
 1" = 50' HORIZ -SCALE- VERT 1" = 5'
 APPROVED BY *[Signature]*
 Director of Public Works
 DATE Dec 22, 1958 SHEET 1 of 4

PROPERTY OF
 CITY OF RIVERSIDE

PROPERTY OF
 CITY OF RIVERSIDE

F.B.8-47 J.O.2276

PROPERTY OF
CITY OF RIVERSIDE
CITY ENGINEERING DEPT.

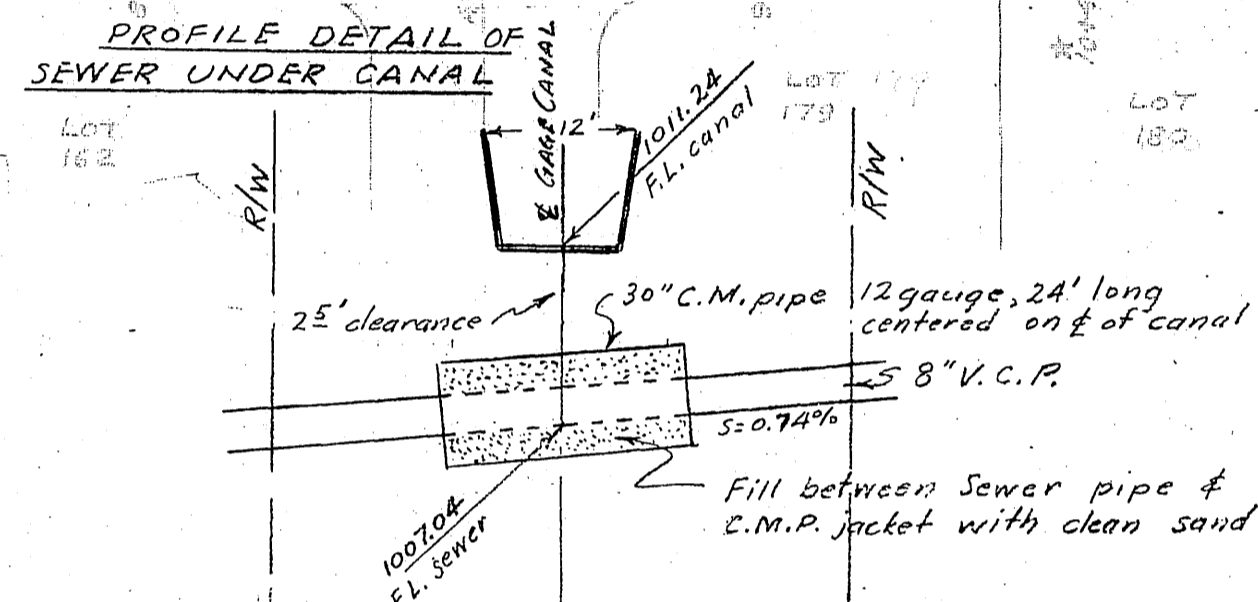
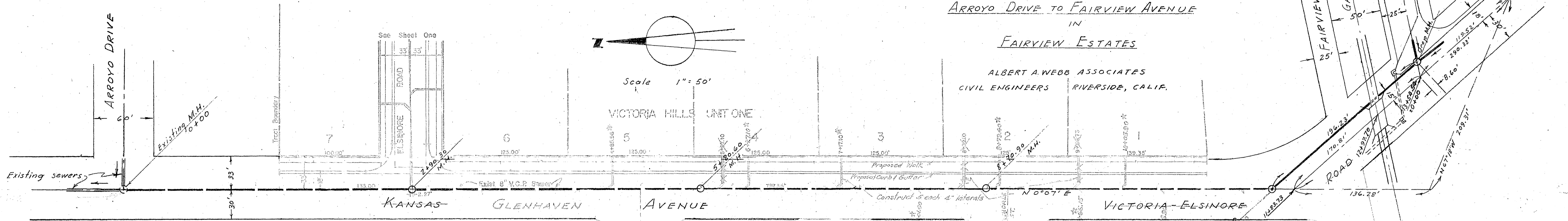
PROPERTY OF
CITY OF RIVERSIDE
CITY ENGINEERING DEPT.

SEWER PLAN AND PROFILE
OF
GLENHAVEN AVENUE
KANSAS AVENUE AND VICTORIA-ELSINORE ROAD
FROM
ARROYO DRIVE TO FAIRVIEW AVENUE
IN
FAIRVIEW ESTATES

ALBERT A. WEBB ASSOCIATES
CIVIL ENGINEERS RIVERSIDE, CALIF.

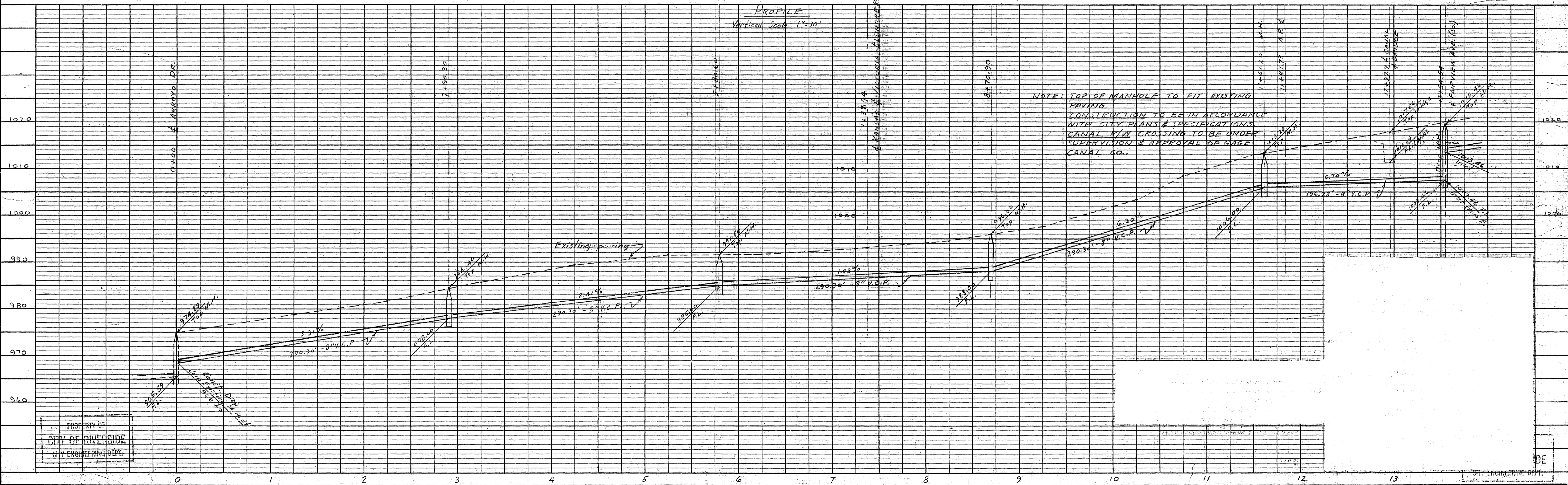
PLAN	SURVEYED	DATE
	PLOTTED	BY
	ALIGNED	
	CHECKED	
	BY	
	NO. 240	

PROFILE	SURVEYED	DATE
	PLOTTED	BY
	ALIGNED	
	CHECKED	
	BY	
	NO. 240	



* = "As Built" Sewer Laterals, 4-8-53, Webb
BENCH MARK - P.P. 1947J, SPIKE, KANSAS AVE. & ARROYO DR. 978.25
X - S.E. COR. GAGE CANAL BRIDGE, 1018.51

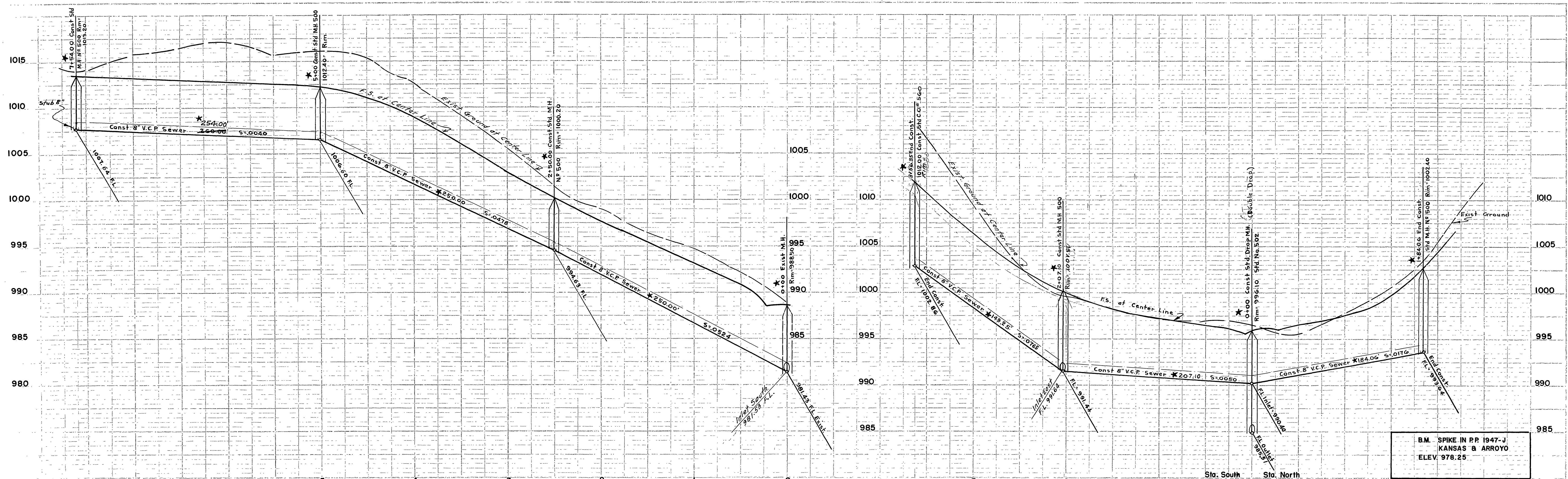
APPROVED 1-14 1955
M. H. DAVINE
CITY ENGINEER, CITY OF RIVERSIDE



NOTE: TOP OF MANHOLE TO FIT EXISTING PAVING.
CONSTRUCTION TO BE IN ACCORDANCE WITH CITY STANDARDS & SPECIFICATIONS.
CANAL R/W CROSSING TO BE UNDER SUPERVISION & APPROVAL OF GAGE CANAL CO.

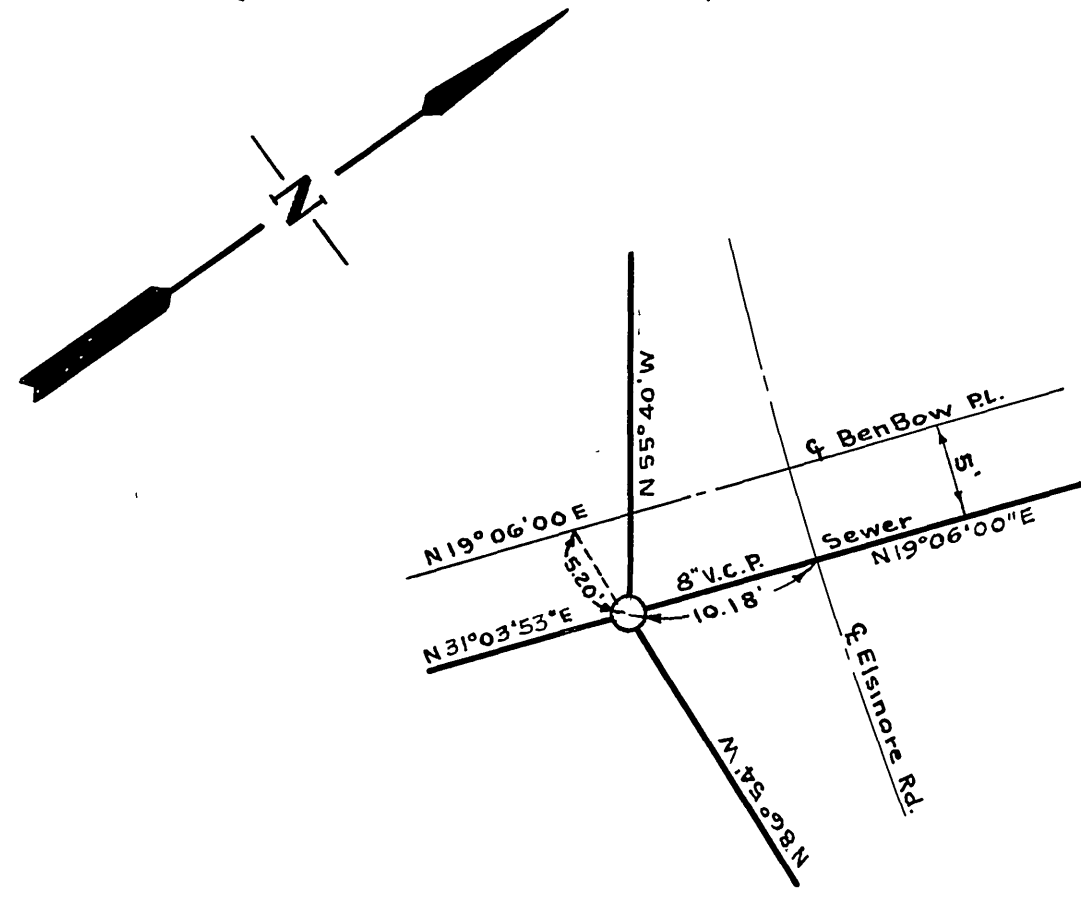
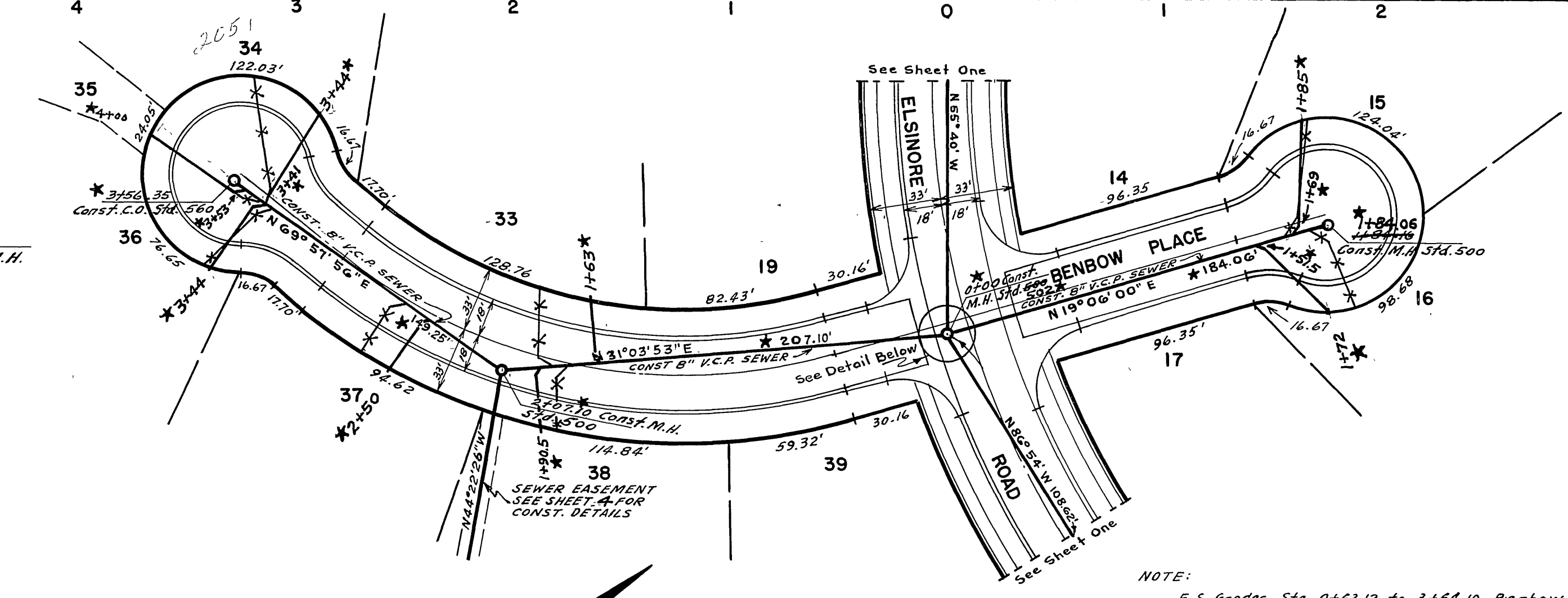
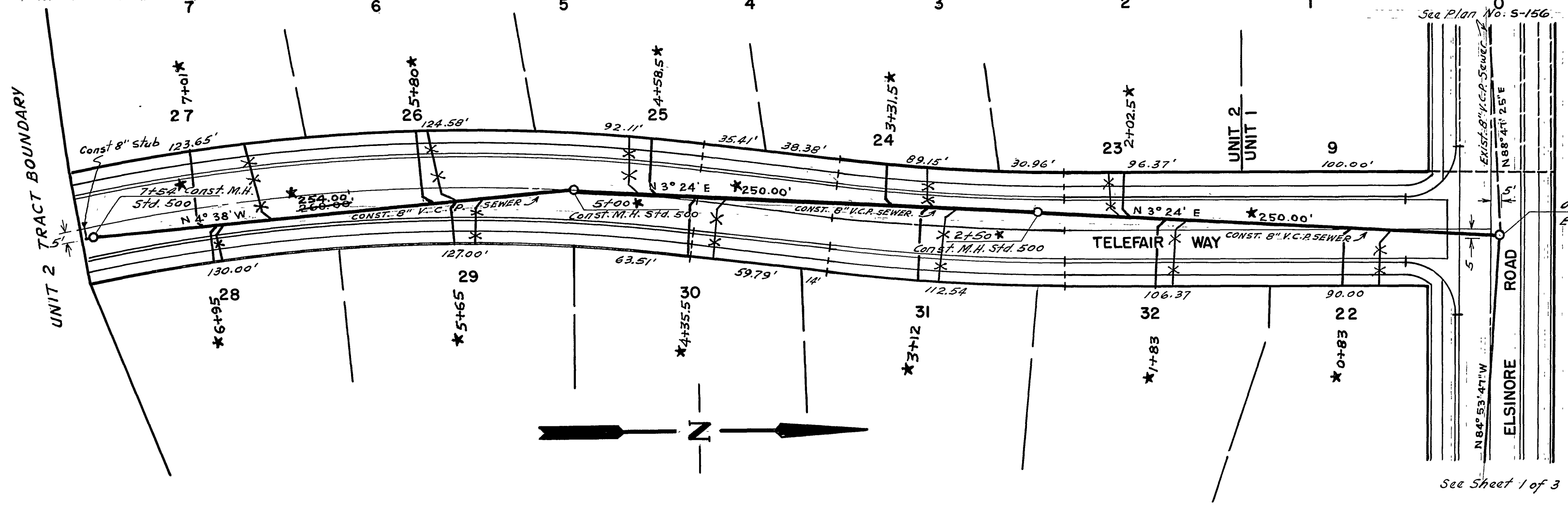
PROPERTY OF
CITY OF RIVERSIDE
CITY ENGINEERING DEPT.

PROPERTY OF
CITY OF RIVERSIDE
CITY ENGINEERING DEPT.



Profile	Station	Elevation
1	7+54.00	1015.00
2	5+00.00	1012.40
3	2+50.00	1000.20
4	0+00.00	988.50
5	2+07.10	1000.50
6	1+84.06	1002.40
7	0+00.00	978.25

B.M. SPIKE IN P.P. 1947-J
KANSAS & ARROYO
ELEV. 978.25



* = "As Built", 10-15-59, H.Ball

NOTE:
F.S. Grades Sta. 0+83.12 to 3+64.10 Benbow Place
Revised October 7, 1959.

APPROVED *P. B. Thol*

RIVERSIDE ENGINEERING CO. INC.
RIVERSIDE, CALIFORNIA
APPROVED *George O. Crawley* DATE *6-10-59*

CITY OF RIVERSIDE, CALIFORNIA
DEPARTMENT OF PUBLIC WORKS

SEWER PLAN & PROFILE
TELEFAIR WAY & BENBOW PL.

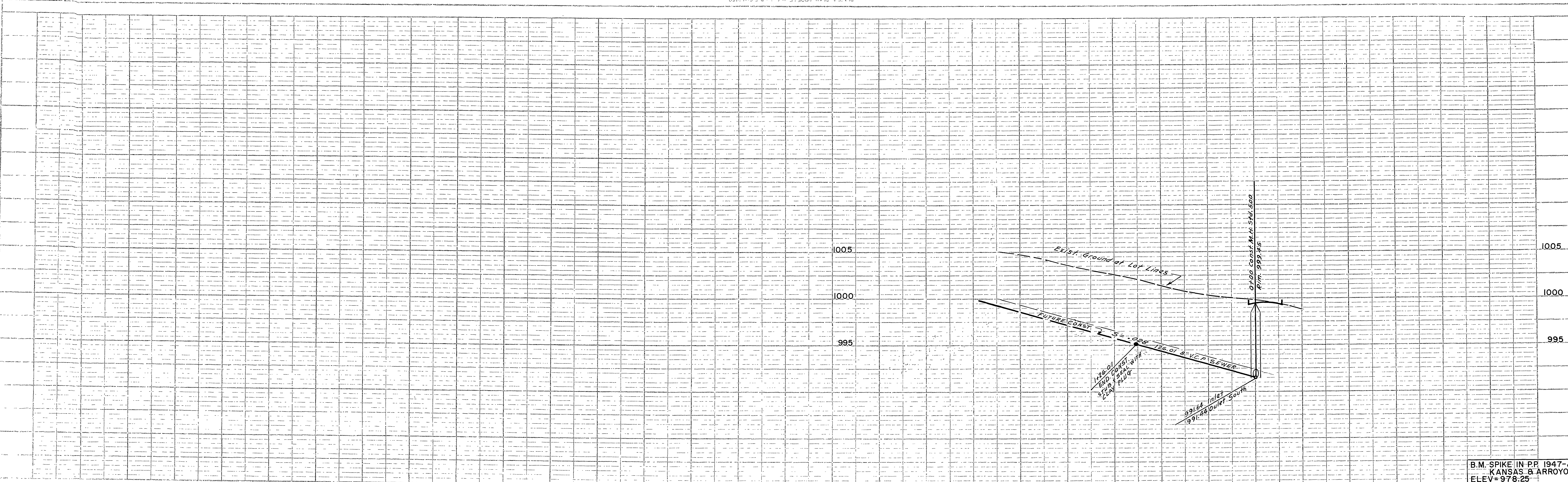
UNIT 2 ONLY ON THIS SHEET
VICTORIA HILLS UNIT 1 & 2
HORZ 1"=50' VERT 1"=5'

APPROVED *[Signature]*
DIRECTOR OF PUBLIC WORKS

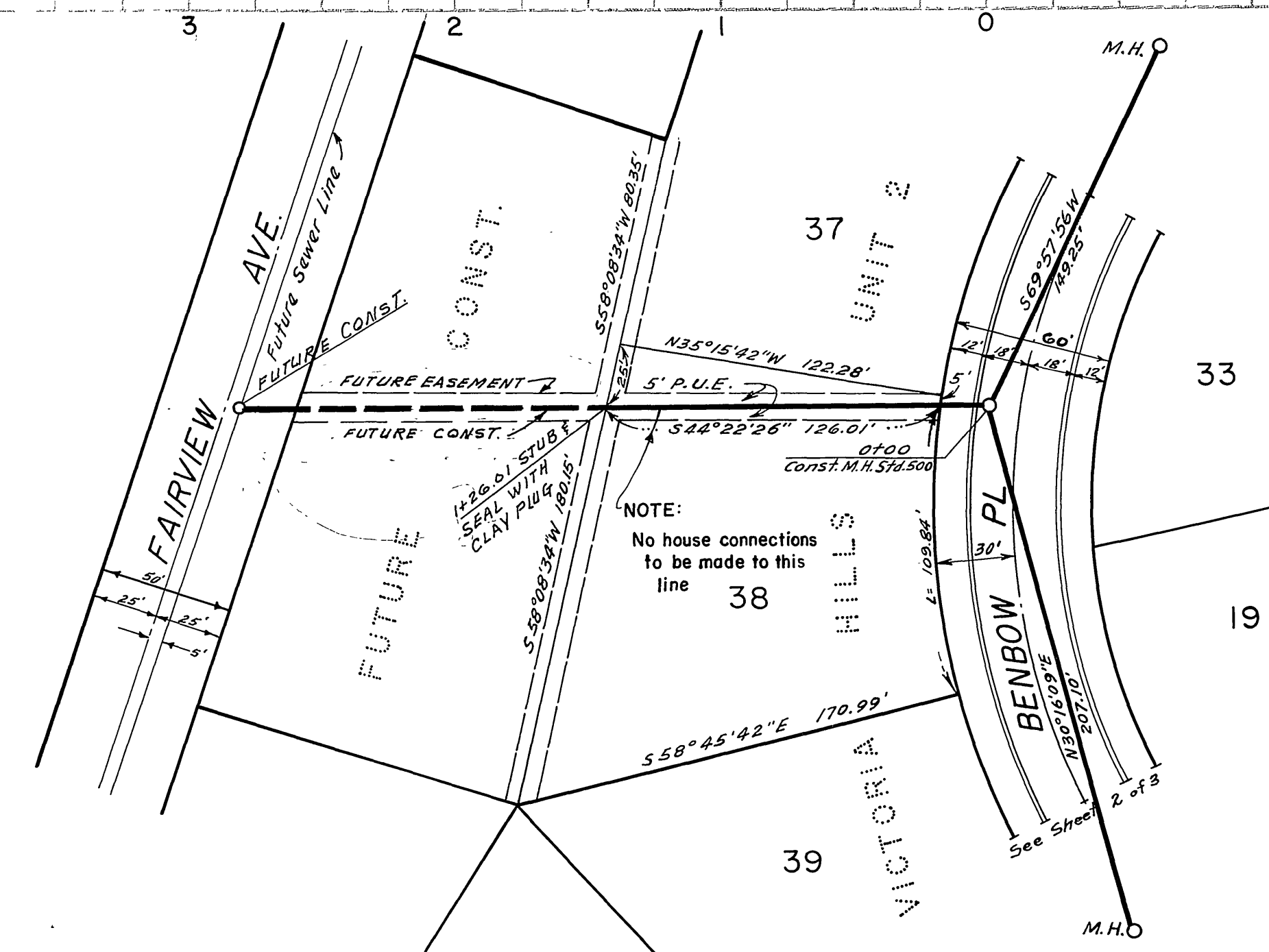
DATE *July 30, 1959*

NO. **S-156**
SHEET 3 OF 4

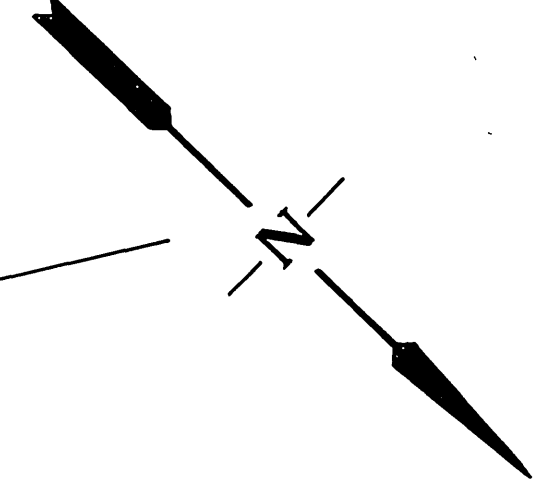
PLATE 1 PLAN PROFILE FOR RIVERSIDE
 TITLE: SEWER PLAN
 DATE: 6-10-59



B.M. SPIKE IN PP 1947-J
 KANSAS & ARROYO
 ELEV = 978.25



NOTE:
 No house connections
 to be made to this
 line
 38



RIVERSIDE ENGINEERING CO. INC.
 RIVERSIDE, CALIFORNIA
 APPROVED *George O. Crawley* DATE 6-10-59

CITY OF RIVERSIDE, CALIFORNIA
 DEPARTMENT OF PUBLIC WORKS

SEWER PLAN & PROFILE
 IN EASEMENT FROM
 FAIRVIEW AVE TO BENBOW PL

UNIT 2 ONLY ON THIS SHEET
 VICTORIA HILLS UNIT 1 & 2

HORZ 1"=50' VERT 1"=5'

APPROVED *M. Mitchell*
 DIRECTOR OF PUBLIC WORKS

DATE *July 30, 1959* SHEET 4 OF 4

NO. **S-156**

F.B. 8-47
 J.O. 2276

NO.	REVISION	DATE

NO.	REVISION	DATE